



# Persimmon

Together, we make your home



## Bishops Mead Phase 2

Lydney • Gloucestershire

# Together, we make your home

When it comes to designing a new development, we apply the same philosophy every time – make it unique, make it personal. That's because we understand your new home is more than simply bricks and mortar. It's a private place of sanctuary where we hope you'll laugh, entertain and escape for many years to come.

**"With over 50 years of building excellence, find out more about us on page 4"**



## **5 stars!**

We're proud of our 5 star builder status awarded by the national Home Builders Federation (HBF). It's a reflection of our commitment to delivering excellence always and putting our customers at the heart of all we do.



Bishops Mead Phase 2

# Find out more

About Persimmon Homes	4
Your journey with us and schemes to help	6
Living at Bishops Mead Phase 2	8
Development layout	10
Our homes	12
Specifications	28
Sustainability	30
Personalise with Finishing Touches	32
Reasons to buy from us	34





Who we are

## A little bit about us

You're about to make one of the most exciting investments of your life! A beautiful place to call home for years to come. Here are some reasons to invest in a Persimmon home...

### Over 50 years of expertise

We've been building homes and communities since the early seventies, and just as fashions have moved on, so too has construction. Over half a century we've perfected processes, fine-tuned materials and honed skills to make us one of today's most modern and progressive home builders.

### Sustainability mission

We're committed to reducing our impact on the planet and building for a better tomorrow, with a dedicated in-house team focused on this. [Read more on page 30](#)

## Persimmon in numbers

It's not all about numbers we know, but to give you sense of scale here are a few:

**14,868**

homes  
sold in  
2022

**200+**

locations  
across  
the UK

**5000+**

employees  
make it all  
happen

**700+**

apprentices  
taken on  
each year

**£505.6m**

invested in  
local communities  
in 2022





## "Building sustainable homes and community hubs"

### Save money on your energy bills

The increased thermal retention from our insulation and double glazing, along with reduced water use thanks to efficient appliances, mean you'll automatically save money on your energy and water bills – and with the rising cost of living, this can make a real difference.



Take a look at the recently published HBF Watt a Save report to find out how much you could save.

### The Persimmon Pledge

The Persimmon Pledge is our commitment to making sure you receive exceptional customer service and relevant communications before, during and after you've moved in.

Find out more about the Persimmon Pledge.



### Accessible homes

It's crucial that your new home works perfectly for you and your needs. We build in line with Approved Document M accessibility requirements.



Scan the QR code to find out what each rating means.

### Giving back

We do everything we can to give back to our communities and proudly contribute towards community hubs, children's play areas, schools and sports facilities.

Our 'Community Champions' and 'Building Futures' programmes help to raise funds for projects and charities across Great Britain. If you'd like to get involved visit [persimmonhomes.com/community-champions](https://persimmonhomes.com/community-champions) to see if you could apply to support your local community.

### Help when you need it

You'll have a dedicated customer care helpline, plus cover for emergencies like complete loss of electricity, gas, water or drainage.

### 10-year warranty

When you buy a Persimmon home it comes complete with a 'peace of mind' 10-year insurance-backed warranty and our own two-year Persimmon warranty.

### Happy hour

We run Customer Construction Clinics from our on-site sales offices each Monday from 5-6pm. Pop in to see the team both during and after you've moved in to your new home.

### Finishing Touches

We know you'll want to make your home your own, so we created 'Finishing Touches', our home personalisation service.

Read more on page 32





With you all the way

# Your journey with us

From finding your perfect new home to moving in,  
we're here to help every step of the way.

1.



2.



3.

## Reservation

So you've seen a home you love? Speak to one of our friendly sales advisors who will help you secure your dream home.

## Solicitor

You'll need to instruct a solicitor or conveyancer at the point of reservation. Your sales advisor can recommend a local independent company.

## Mortgage application

Most people will need to apply for a mortgage. We can recommend independent financial advisors to give you the best impartial advice.

4.



5.



6.

## Personalise!

The bit you've been waiting for! Making the final choices for your new home. Depending on build stage you can also choose from a range of Finishing Touches.

## Exchange contracts

One step closer to moving in – this is where we exchange contracts/missives and your solicitor will transfer your deposit.

## Quality assurance

Your home will be thoroughly inspected by site teams and will also have an Independent Quality Inspection to make sure it's ready for you to move into.

7.



8.



9.

## Home demo

Another exciting milestone! Here's where you get to see your new home before completion. You'll be shown how everything works and any questions can be answered.

## Handover

The moment you've been waiting for! The paperwork has been completed, the money transferred and now it's time to move in and start unpacking...

## After-care

Our site and customer care teams will support you every step of the way. You'll receive a dedicated customer care line number to deal with any issues.

[persimmonhomes.com](https://www.persimmonhomes.com)



# Need help?

One of the best things about buying a new-build home is the amazing offers and schemes you could benefit from. T&Cs apply.



**PART  
EXCHANGE**



**HOME  
CHANGE**



**EARLY  
BIRD**



**DEPOSIT UNLOCK**

Deposit Unlock



**BANK OF MUM AND DAD**

Bank of Mum and Dad



**DEPOSIT BOOST**

Deposit Boost



**ARMED FORCES/KEY WORKERS DISCOUNT**

Armed Forces/Key Workers Discount





- Range of 2, 3 and 4-bedroom homes
- Great choice of local amenities
- Ideal for first time buyers, professionals, downsizers and families
- Close to good rail networks



**Scan me!**

For availability and pricing  
on our beautiful new homes  
at Bishops Mead Phase 2.





Lydney • Gloucestershire

## Bishops Mead Phase 2

**Bishops Mead Phase 2 is our new collection of homes in the charming town of Lydney in Gloucestershire. Offering a range of two, three and four-bedroom homes, it's in a fantastic location on the southern outskirts of the town.**

Situated on the west bank of the River Severn, surrounded by the Forest of Dean and just 21 miles from Gloucester, Lydney is a lovely place to call home. The town's unspoilt harbour area, which dates from the 1870s, is historically important and a perfect place for an evening stroll.

### Everything you need close to home

Lydney has excellent transport links which ensure it's a vibrant place to both live and work. You'll find a good range of shops, schools, a leisure centre and sports facilities, as well as a selection of thriving businesses. The town is also home to a wide variety of pubs, cafés and restaurants, catering for all tastes.

If you enjoy getting out and about, there's a wealth of beautiful walks and cycle paths surrounding the town. There are plenty of green open spaces to enjoy nearby too, from Lydney Park Estate to Bathurst Park and Lydney Recreation Trust Ground, not forgetting the stunning Forest of Dean just a 15-minute drive north.

For leisure facilities, Lydney's popular outdoor Bathurst Swimming Pool is open from May until September, while Freedom Leisure Lydney is located at the local secondary school. There's also a nine-hole golf course and renowned rugby club.

If you need to commute, you'll be halfway between Gloucester with its link to the M5, and Chepstow with its link to the M4 at Newport for South Wales or Bristol. Lydney train station is also connected to the national rail network.

## EXPLORE

**Start exploring...**

Lydney Train Station  
**1 mile**

A48  
**1 mile**

Chepstow Train Station  
**8.8 miles**

Ross on Wye  
**17.2 miles**



## Bishops Mead



This site layout is intended for illustrative purposes only, and may be subject to change, for example, in response to market demand, ground conditions or technical and planning reasons. Trees, planting and public open space shown are indicative, actual numbers and positions may vary. This site plan does not form any part of a warranty or contract. Further information is available from a site sales advisor.



## Our homes

### 2 bedroom

-  **The Alnwick**
-  **The Trafalgar**

### 3 bedroom

-  **The Barton**
-  **The Moseley**
-  **The Grasmere**
-  **The Derwent**
-  **The Windermere**
-  **The Carleton**
-  **The Chester**

### 3 bedroom

-  **The Lockwood**
-  **The Lockwood Corner**
-  **The Clayton**
-  **The Clayton Corner**

### 4 bedroom

-  **The Hornsea**
-  **The Leicester**
-  **The Coniston**
-  **The Belmont**



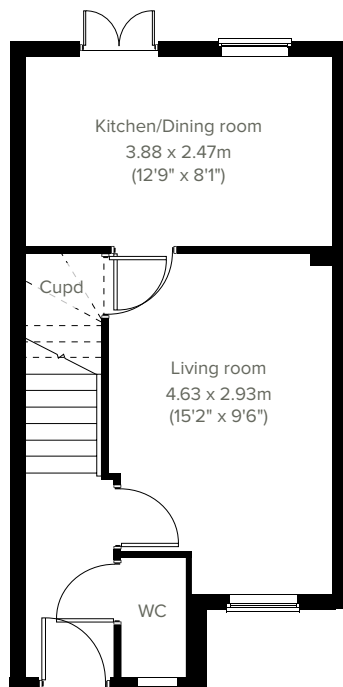


2 bedroom home

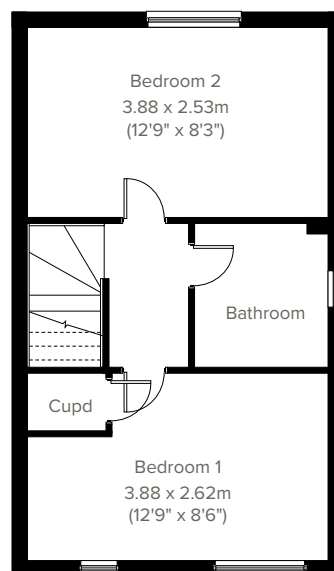
# The Alnwick



Perfectly-proportioned, the Alnwick has a stylish open plan kitchen/dining room with French doors leading into the garden, two double bedrooms, a good-sized living room and off-road parking. Ideal if you're a first-time buyer looking for a fresh modern home you can make your own.



**GROUND FLOOR**



**1ST FLOOR**

Please note that elevation treatments and window/door positions may vary from plot to plot. Plot specific information will be confirmed on your reservation check list.

This information is for guidance only and does not form any part of any contract or constitute a warranty. Illustrations are of typical elevations and may vary. Floor plans are not drawn to scale and window positions may vary. Room dimensions are subject to a +/- 50mm (2") tolerance and are based on the maximum dimensions in each room. Please consult your sales advisor on site for specific elevations, room dimensions and external finishes. The EPC ratings are estimated and vary between home types, orientation and developments.

**12**

**Predicted Energy Assessment: B**

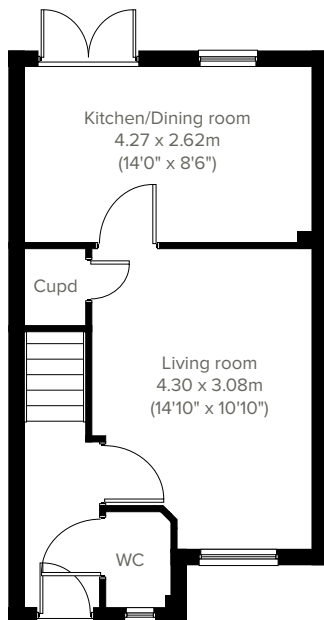


# The Trafalgar

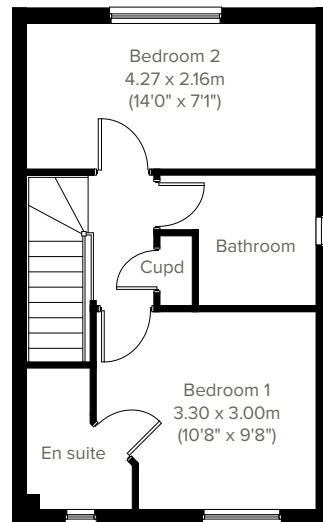
2 bedroom home



A beautifully proportioned two-bedroom home, the Trafalgar is designed for modern living. Its features include a front aspect living room and open plan kitchen/dining room with French doors leading into the garden. It's practical as well, with two handy storage cupboards and an en suite to bedroom one.



**GROUND FLOOR**



**1ST FLOOR**

Please note that elevation treatments and window/door positions may vary from plot to plot. Plot specific information will be confirmed on your reservation check list.

This information is for guidance only and does not form any part of any contract or constitute a warranty. Illustrations are of typical elevations and may vary. Floor plans are not drawn to scale and window positions may vary. Room dimensions are subject to a +/- 50mm (2") tolerance and are based on the maximum dimensions in each room. Please consult your sales advisor on site for specific elevations, room dimensions and external finishes. The EPC ratings are estimated and vary between home types, orientation and developments.

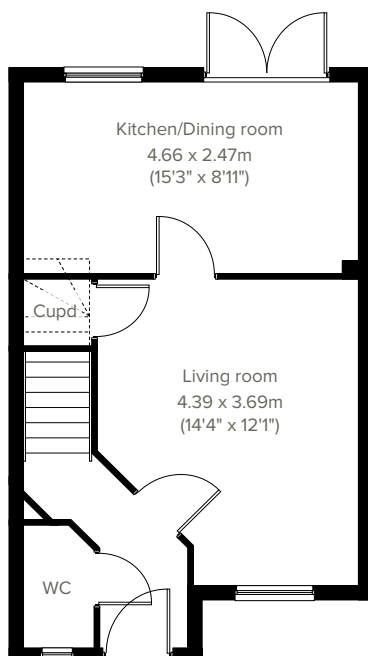


3 bedroom home

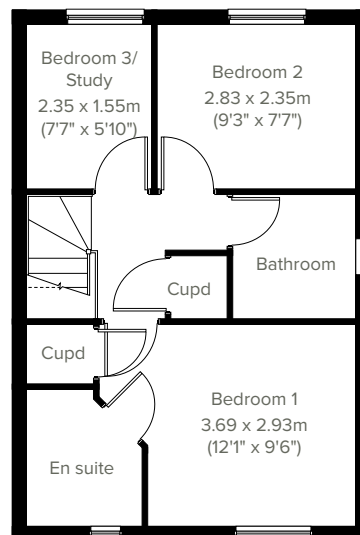
# The Barton



The popular Barton is a three-bedroom family home with a bright and modern open plan kitchen/dining room with French doors leading into the garden. The downstairs WC, three handy storage cupboards and en suite to bedroom one mean it ticks all the boxes for practical family living. Plus bedroom three can be used as a study.



**GROUND FLOOR**



**1ST FLOOR**

Please note that elevation treatments and window/door positions may vary from plot to plot. Plot specific information will be confirmed on your reservation check list.

This information is for guidance only and does not form any part of any contract or constitute a warranty. Illustrations are of typical elevations and may vary. Floor plans are not drawn to scale and window positions may vary. Room dimensions are subject to a +/- 50mm (2") tolerance and are based on the maximum dimensions in each room. Please consult your sales advisor on site for specific elevations, room dimensions and external finishes. The EPC ratings are estimated and vary between home types, orientation and developments.



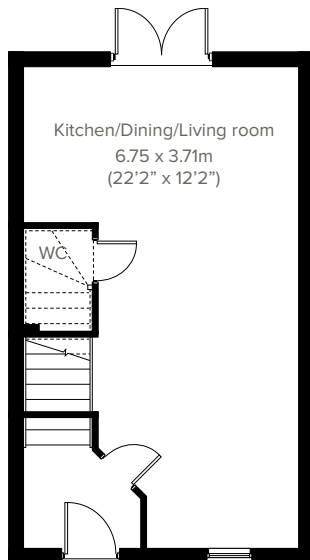


# The Moseley

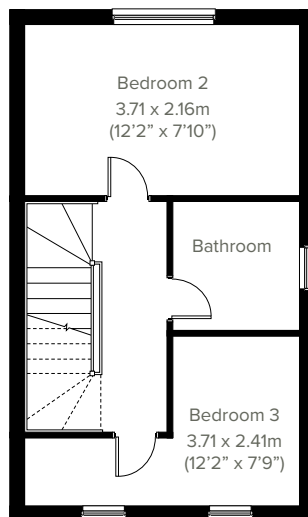
3 bedroom home



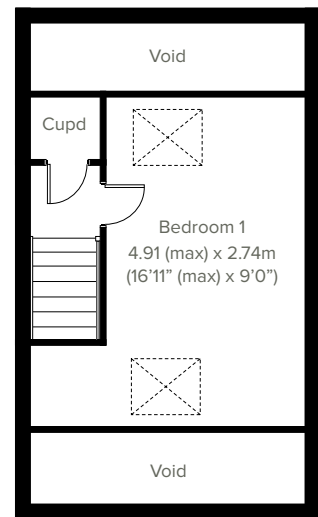
Perfect for the way we live today, the three-bedroom, 2.5-storey Moseley has a modern open plan kitchen/dining/living room. French doors also open into the garden making it a home that's ideal for entertaining. Upstairs there are three nicely-proportioned bedrooms and a family-sized bathroom. Appealing to families, first-time buyers and young professionals.



**GROUND FLOOR**



**1ST FLOOR**



**2ND FLOOR**

Please note that elevation treatments and window/door positions may vary from plot to plot. Plot specific information will be confirmed on your reservation check list.

This information is for guidance only and does not form any part of any contract or constitute a warranty. Illustrations are of typical elevations and may vary. Floor plans are not drawn to scale and window positions may vary. Room dimensions are subject to a +/- 50mm (2") tolerance and are based on the maximum dimensions in each room. Please consult your sales advisor on site for specific elevations, room dimensions and external finishes. The EPC ratings are estimated and vary between home types, orientation and developments.

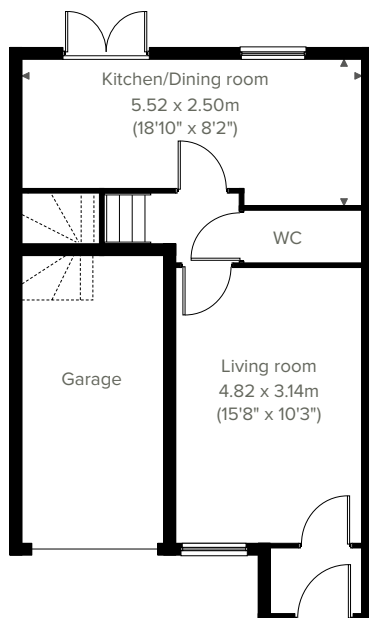


3 bedroom home

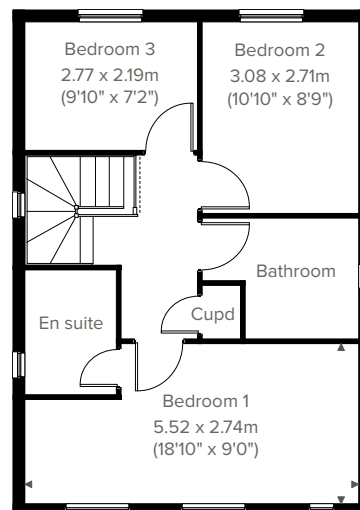
# The Grasmere



An attractive three-bedroom family home, the Grasmere is ideal for modern living. The bright open plan kitchen/dining room with French doors leading into the garden is perfect for entertaining and family meals. The front porch, downstairs WC and two storage cupboards take care of everyday storage. Plus there's an en suite to bedroom one, family bathroom and integral garage.



**GROUND FLOOR**



**1ST FLOOR**

Please note that elevation treatments and window/door positions may vary from plot to plot. Plot specific information will be confirmed on your reservation check list.

This information is for guidance only and does not form any part of any contract or constitute a warranty. Illustrations are of typical elevations and may vary. Floor plans are not drawn to scale and window positions may vary. Room dimensions are subject to a +/- 50mm (2") tolerance and are based on the maximum dimensions in each room. Please consult your sales advisor on site for specific elevations, room dimensions and external finishes. The EPC ratings are estimated and vary between home types, orientation and developments.

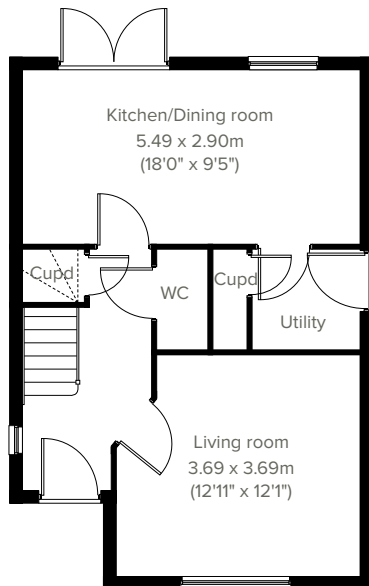


# The Derwent

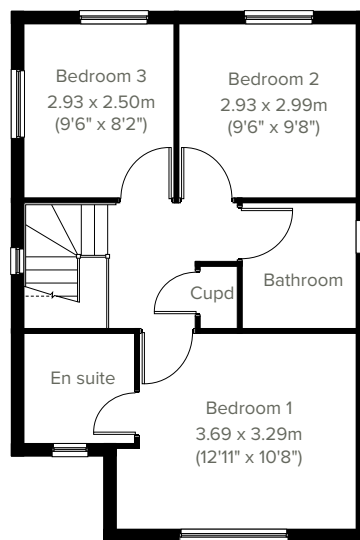
3 bedroom home



Enjoy the best of modern living in this popular three-bedroom home which benefits from a stylish open plan kitchen/dining room with French doors leading into the garden. The Derwent's bright front aspect living room, separate utility room, handy storage cupboard and downstairs WC complete the ground floor. Upstairs, bedroom one has an en suite and there's a good-sized family bathroom and further storage.



**GROUND FLOOR**



**1ST FLOOR**

Please note that elevation treatments and window/door positions may vary from plot to plot. Plot specific information will be confirmed on your reservation check list.

This information is for guidance only and does not form any part of any contract or constitute a warranty. Illustrations are of typical elevations and may vary. Floor plans are not drawn to scale and window positions may vary. Room dimensions are subject to a +/- 50mm (2") tolerance and are based on the maximum dimensions in each room. Please consult your sales advisor on site for specific elevations, room dimensions and external finishes. The EPC ratings are estimated and vary between home types, orientation and developments.



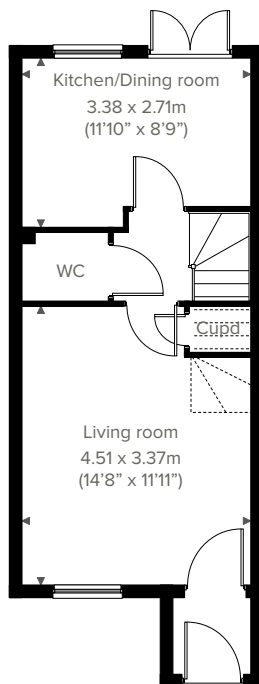


3 bedroom home

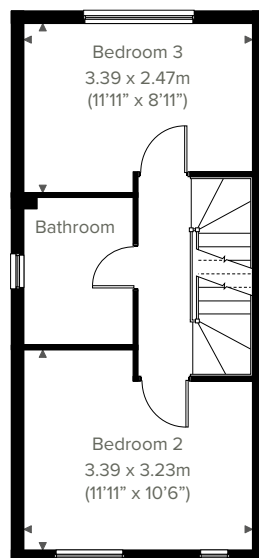
# The Windermere



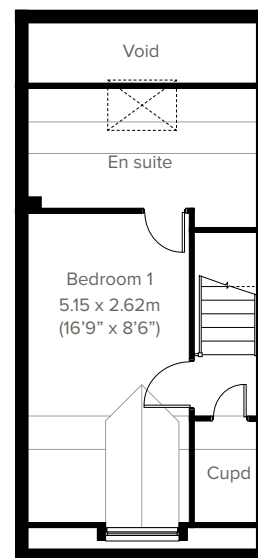
An attractive three-storey, three-bedroom home, the Windermere has a modern open plan kitchen/ dining room, well-proportioned living room and three good-sized bedrooms. The top floor bedroom one also has a spacious en suite. The enclosed porch, downstairs WC, two storage cupboards and off-road parking mean it's practical as well as stylish.



**GROUND FLOOR**



**1ST FLOOR**



**2ND FLOOR**

Please note that elevation treatments and window/door positions may vary from plot to plot. Plot specific information will be confirmed on your reservation check list.

This information is for guidance only and does not form any part of any contract or constitute a warranty. Illustrations are of typical elevations and may vary. Floor plans are not drawn to scale and window positions may vary. Room dimensions are subject to a +/- 50mm (2") tolerance and are based on the maximum dimensions in each room. Please consult your sales advisor on site for specific elevations, room dimensions and external finishes. The EPC ratings are estimated and vary between home types, orientation and developments.

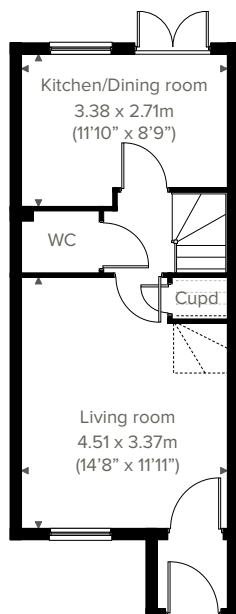


# The Carleton

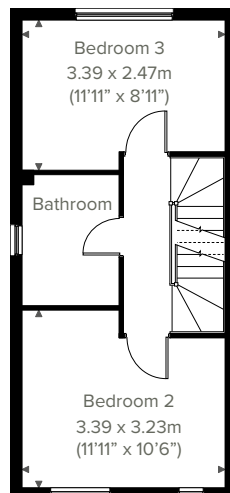
3 bedroom home



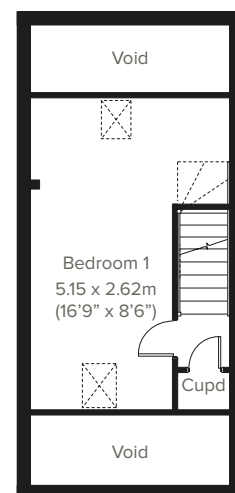
An attractive three-storey, three-bedroom home, the Carleton has a modern open plan kitchen/dining room, well-proportioned living room and three good-sized bedrooms with the spacious bedroom one on the top floor. The enclosed porch, downstairs WC, two storage cupboards and off-road parking mean it's practical as well as stylish.



**GROUND FLOOR**



**1ST FLOOR**



**2ND FLOOR**

Please note that elevation treatments and window/door positions may vary from plot to plot. Plot specific information will be confirmed on your reservation check list.

This information is for guidance only and does not form any part of any contract or constitute a warranty. Illustrations are of typical elevations and may vary. Floor plans are not drawn to scale and window positions may vary. Room dimensions are subject to a +/- 50mm (2") tolerance and are based on the maximum dimensions in each room. Please consult your sales advisor on site for specific elevations, room dimensions and external finishes. The EPC ratings are estimated and vary between home types, orientation and developments.

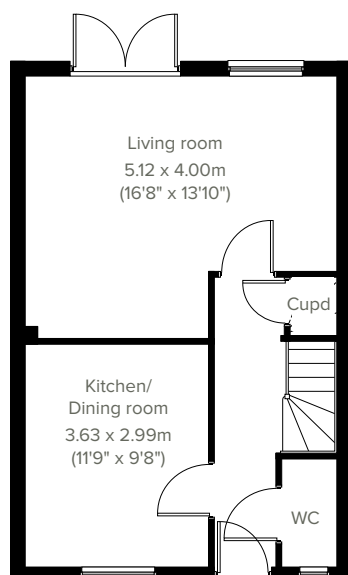


3 bedroom home

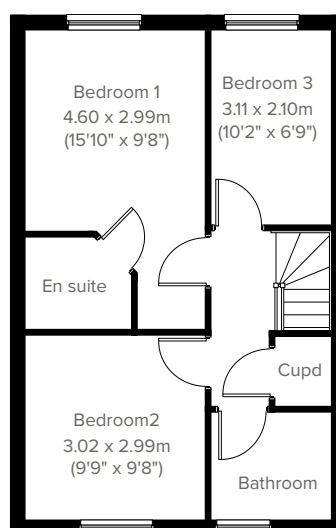
# The Chester



A beautifully-proportioned three-bedroom detached home, the Chester has everything you need for modern living. Downstairs there's a front aspect kitchen/dining room, spacious living room with French doors leading into the rear garden, a large storage cupboard under the stairs and a WC. The first floor is home to a generous bedroom one and en suite plus two further bedrooms, a storage cupboard and family bathroom.



**GROUND FLOOR**



**1ST FLOOR**

Please note that elevation treatments and window/door positions may vary from plot to plot. Plot specific information will be confirmed on your reservation check list.

This information is for guidance only and does not form any part of any contract or constitute a warranty. Illustrations are of typical elevations and may vary. Floor plans are not drawn to scale and window positions may vary. Room dimensions are subject to a +/- 50mm (2") tolerance and are based on the maximum dimensions in each room. Please consult your sales advisor on site for specific elevations, room dimensions and external finishes. The EPC ratings are estimated and vary between home types, orientation and developments.



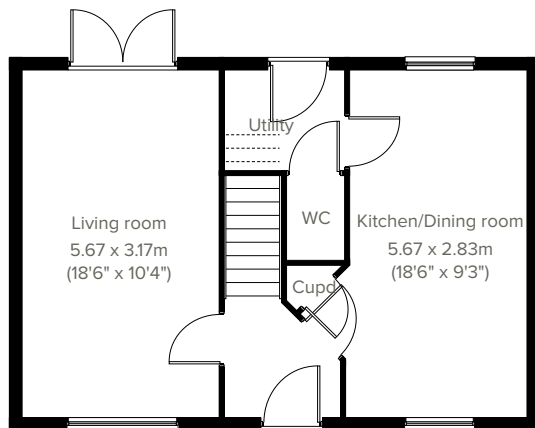


# The Lockwood

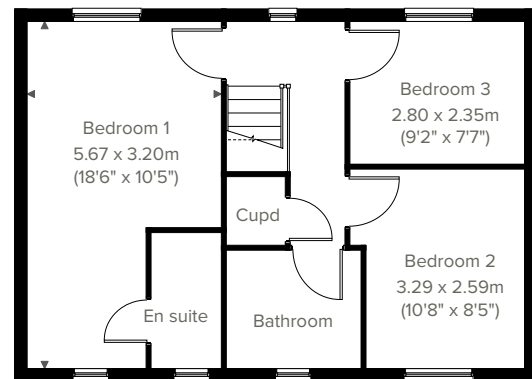
3 bedroom home



A superb family home, the Lockwood features a stunning open plan kitchen/dining room and equally impressive dual-aspect living room with French doors opening into the garden. A utility room, WC and storage cupboard ensure it's practical as well as stylish. Upstairs you'll find three bedrooms, including a large bedroom one with an en suite, a family-sized bathroom and handy storage cupboard.



**GROUND FLOOR**



**1ST FLOOR**

Please note that elevation treatments and window/door positions may vary from plot to plot. Plot specific information will be confirmed on your reservation check list.

This information is for guidance only and does not form any part of any contract or constitute a warranty. Illustrations are of typical elevations and may vary. Floor plans are not drawn to scale and window positions may vary. Room dimensions are subject to a +/- 50mm (2") tolerance and are based on the maximum dimensions in each room. Please consult your sales advisor on site for specific elevations, room dimensions and external finishes. The EPC ratings are estimated and vary between home types, orientation and developments.

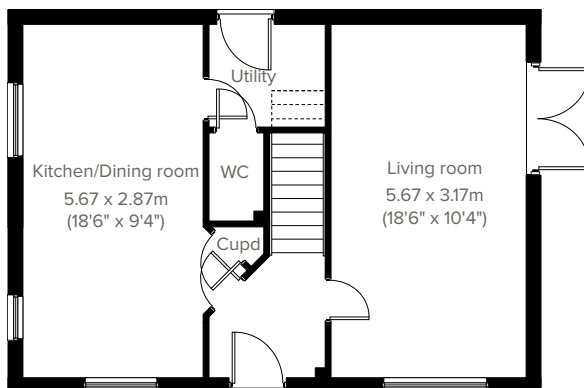


3 bedroom home

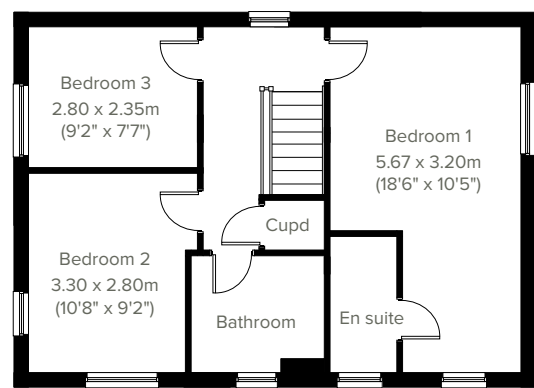
# The Lockwood Corner



A fantastic family home, the Lockwood Corner features a stunning open plan kitchen/dining room and equally impressive living room with French doors opening into the garden. A utility room, WC and storage cupboard ensure it's practical as well as stylish. Upstairs you'll find three bedrooms, including a large bedroom one with an en suite, a family-sized bathroom and handy storage cupboard.



**GROUND FLOOR**



**1ST FLOOR**

Please note that elevation treatments and window/door positions may vary from plot to plot. Plot specific information will be confirmed on your reservation check list.

This information is for guidance only and does not form any part of any contract or constitute a warranty. Illustrations are of typical elevations and may vary. Floor plans are not drawn to scale and window positions may vary. Room dimensions are subject to a +/- 50mm (2") tolerance and are based on the maximum dimensions in each room. Please consult your sales advisor on site for specific elevations, room dimensions and external finishes. The EPC ratings are estimated and vary between home types, orientation and developments.

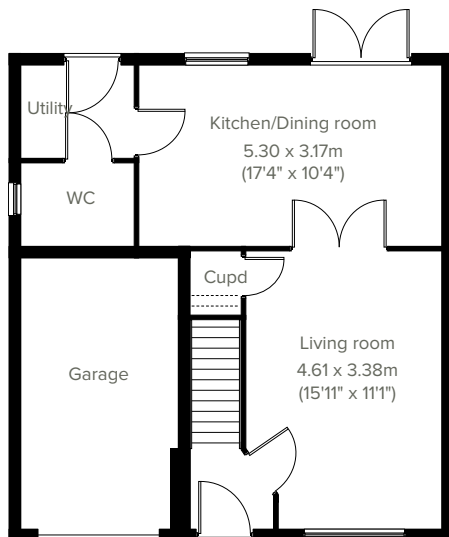


# The Hornsea

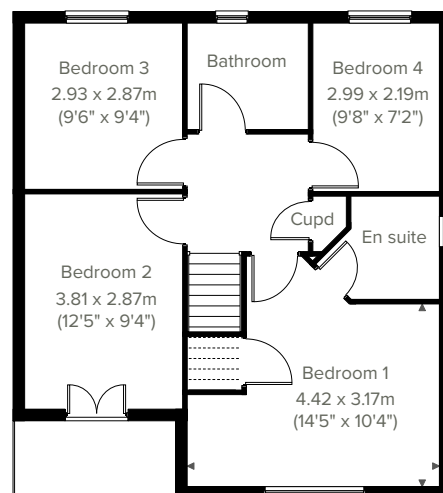
4 bedroom home



The Hornsea is a superb detached home with an integral garage, and a good-sized living room with double doors leading into a bright open plan kitchen/dining room - perfect for family life and entertaining. It's practical too, with a utility, downstairs WC and two storage cupboards. The large bedroom one has an en suite with the spacious landing leading on to three further bedrooms and the main family bathroom.



**GROUND FLOOR**



**1ST FLOOR**

Please note that elevation treatments and window/door positions may vary from plot to plot. Plot specific information will be confirmed on your reservation check list.

This information is for guidance only and does not form any part of any contract or constitute a warranty. Illustrations are of typical elevations and may vary. Floor plans are not drawn to scale and window positions may vary. Room dimensions are subject to a +/- 50mm (2") tolerance and are based on the maximum dimensions in each room. Please consult your sales advisor on site for specific elevations, room dimensions and external finishes. The EPC ratings are estimated and vary between home types, orientation and developments.



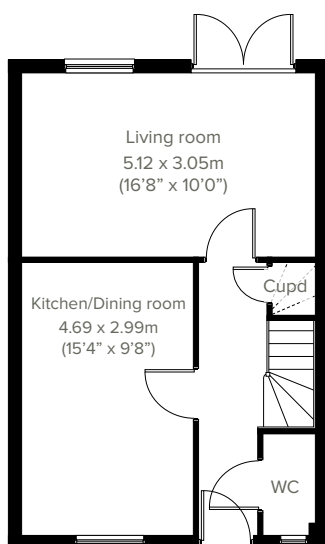


4 bedroom home

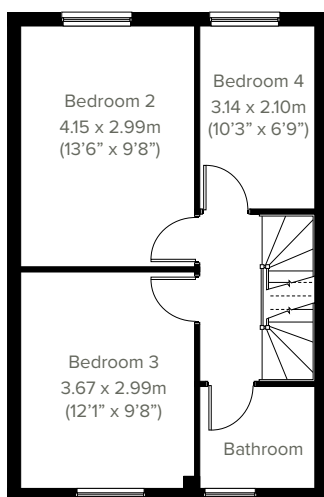
# The Leicester



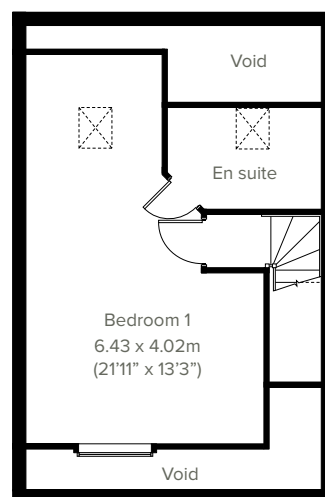
Modern three-storey living at its best; the Leicester is a four-bedroom home ideal for families. It features an open plan kitchen/dining room, a light-filled living room with French doors leading into the garden, plus a handy under-stairs storage cupboard and WC. The first floor has three bedrooms and the main family bathroom, and on the top floor there's an impressive bedroom one with an en suite.



**GROUND FLOOR**



**1ST FLOOR**



**2ND FLOOR**

Please note that elevation treatments and window/door positions may vary from plot to plot. Plot specific information will be confirmed on your reservation check list.

This information is for guidance only and does not form any part of any contract or constitute a warranty. Illustrations are of typical elevations and may vary. Floor plans are not drawn to scale and window positions may vary. Room dimensions are subject to a +/- 50mm (2") tolerance and are based on the maximum dimensions in each room. Please consult your sales advisor on site for specific elevations, room dimensions and external finishes. The EPC ratings are estimated and vary between home types, orientation and developments.

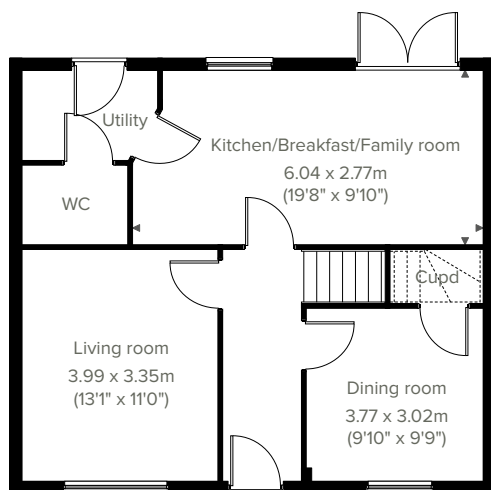


# The Coniston

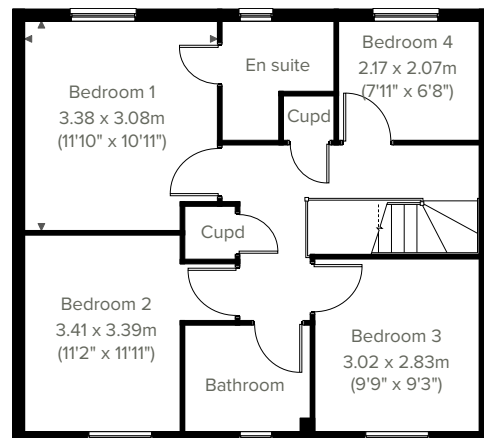
4 bedroom home



A popular family home, the Coniston ticks all the boxes. The modern and stylish open plan kitchen/ breakfast/family room is perfect for spending time as a family and entertaining. There's also a well-proportioned living room, separate dining room, downstairs WC and handy utility with outside access. Upstairs there are four bedrooms - bedroom one has an en suite - a large family-sized bathroom and two storage cupboards.



**GROUND FLOOR**



**1ST FLOOR**

Please note that elevation treatments and window/door positions may vary from plot to plot. Plot specific information will be confirmed on your reservation check list.

This information is for guidance only and does not form any part of any contract or constitute a warranty. Illustrations are of typical elevations and may vary. Floor plans are not drawn to scale and window positions may vary. Room dimensions are subject to a +/- 50mm (2") tolerance and are based on the maximum dimensions in each room. Please consult your sales advisor on site for specific elevations, room dimensions and external finishes. The EPC ratings are estimated and vary between home types, orientation and developments.

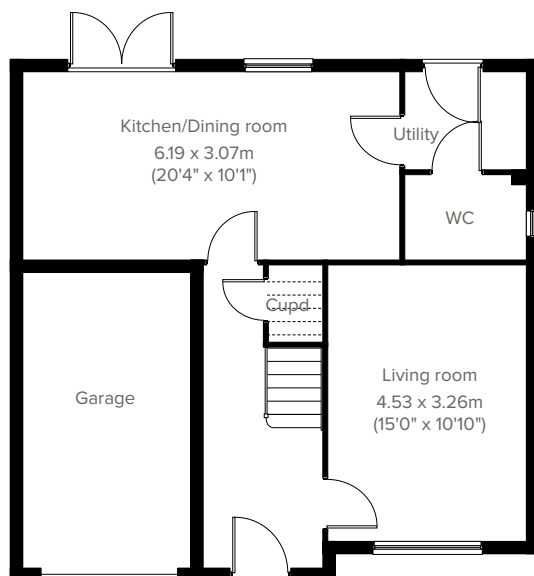


4 bedroom home

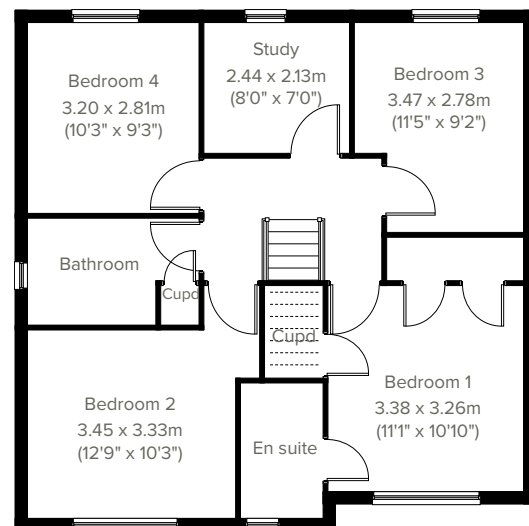
# The Belmont



Ideal for family life, the Belmont is a beautiful four-bedroom detached home. The open plan kitchen/dining room is spacious and bright with French doors leading onto the garden - perfect for gatherings with friends and family. It comes complete with an integral single garage, separate study, downstairs WC, utility and an en suite to bedroom one.



**GROUND FLOOR**



**1ST FLOOR**

Please note that elevation treatments and window/door positions may vary from plot to plot. Plot specific information will be confirmed on your reservation check list.

This information is for guidance only and does not form any part of any contract or constitute a warranty. Illustrations are of typical elevations and may vary. Floor plans are not drawn to scale and window positions may vary. Room dimensions are subject to a +/- 50mm (2") tolerance and are based on the maximum dimensions in each room. Please consult your sales advisor on site for specific elevations, room dimensions and external finishes. The EPC ratings are estimated and vary between home types, orientation and developments.



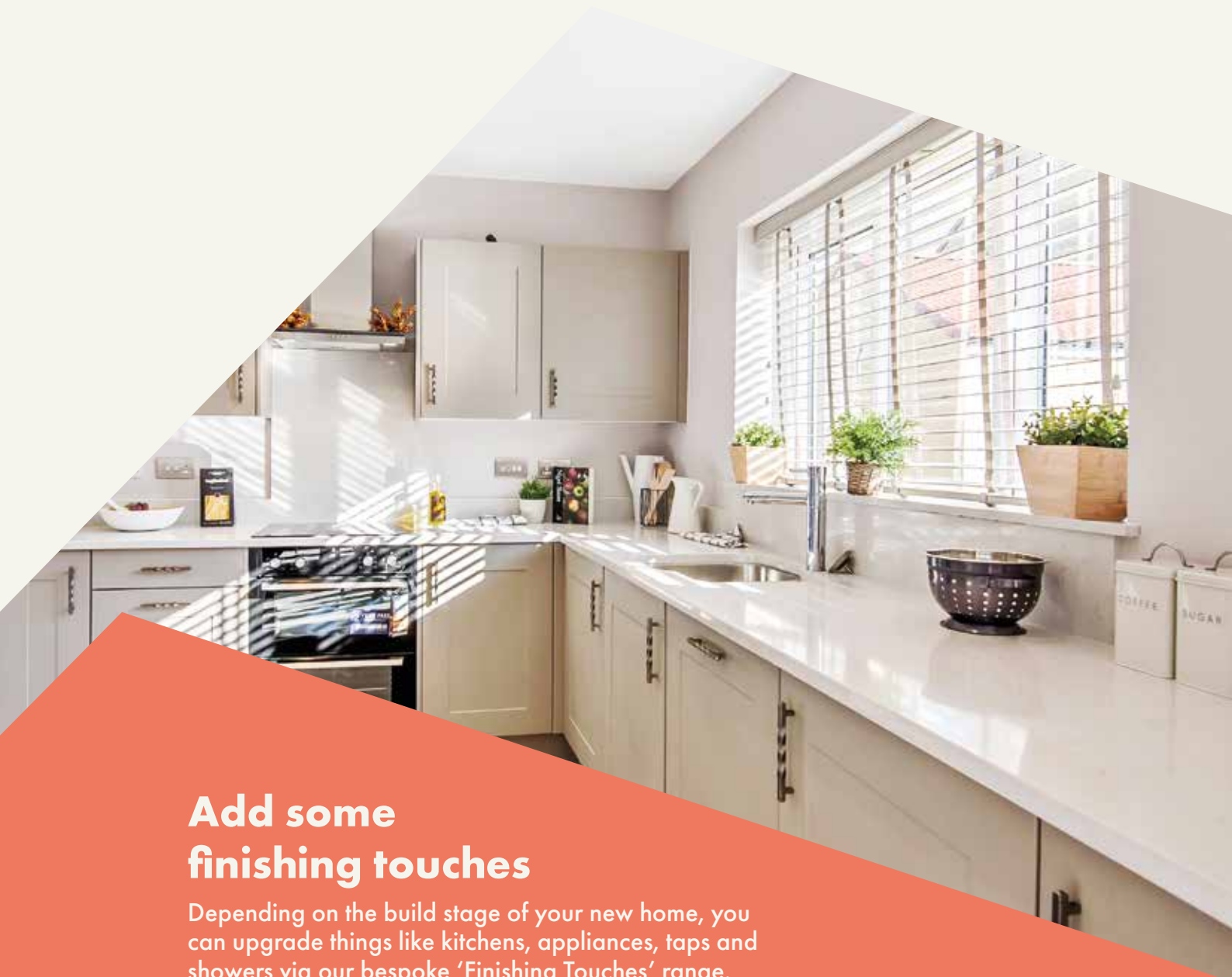




Bishops Mead Phase 2

# Specifications

Our homes include these items as standard to ensure you have everything you need to be comfortable from the day you move in. Built for today's modern lifestyles with sustainability in mind.



## Add some finishing touches

Depending on the build stage of your new home, you can upgrade things like kitchens, appliances, taps and showers via our bespoke 'Finishing Touches' range.



## External

### Walls

Traditional cavity walls.  
Inner: timber frame or block.  
Outer: Style suited to planned architecture.

### Roof

Tile or slate-effect with PVCu rainwater goods.

### Windows

Double glazed E-glass windows in PVCu frames.

### Doors

GRP-skinned external doors with PVCu frames.  
French doors to garden or balcony  
(where applicable).

### Electrics

Doorbell and external light to front.



## Internal

### Ceilings

Painted white.

### Lighting

Pendant or batten fittings with low-energy bulbs.

### Stairs

Staircase painted white.

### Walls

Painted in white emulsion.

### Doors

White pre-finished doors with white hinges.

### Heating

Gas fired combi boiler with radiators in all main rooms, with thermostatically-controlled valves to bedrooms.

### Insulation

Insulated loft and hatch to meet current building regulations.

### Electrics

Individual circuit breakers to consumer unit and double electric sockets to all main rooms.

### General

Media plate incorporating TV and telecommunication outlets to living room.



## Kitchen

### General

Fully-fitted kitchen with a choice of doors and laminate worktop with upstands to match (depending on build stage) with soft closure to all doors and drawers.

### Plumbing

Plumbing for washing machine.

### Appliances

Single electric stainless steel oven, gas hob in stainless steel and integrated cooker hood and splash-back.



## Bathroom

### Suites

White bathroom suites with chrome-finished fittings.

### Extractor fan

Extractor fan to bathroom and en suite (where applicable).

### Shower

Mira showers with chrome fittings to en suite. Where there is no en suite, Mira thermostatic shower with wall mounted shower head, complete with shower screen.

### Tiling

Half height tiling to sanitary-ware walls in bathroom and en suite.

### Splash-backs

1-course splash-back to WC basin / 3-course splash-back to bath / fully tiled shower.

### General

En suite to bedroom(s) where applicable.



## Security

### Locks

Three-point locking to front and rear doors, locks to all windows (except escape windows).

### Fire

Smoke detectors wired to the mains with battery back-up.



## Garage & Gardens

### Garage

Garage, car ports or parking space.

### Garden

Front lawn turfed or landscaped (where applicable).

### Fencing

1.8 metre fence to rear garden, plus gate.







Energy efficiency built in

# Sustainability

**Our homes are typically 30% more efficient than traditional UK housing, helping you to save money and reduce your impact on the environment.**

We're proud that we already build our homes to high levels of energy efficiency, but there's still a way to go. Our in-house sustainability team is dedicated to our mission to have net zero carbon homes in use by 2030, and for our own operations to be net zero carbon by 2040.

To achieve this, we're working to science-based carbon reduction targets in line with the Paris Agreement's 1.5°C warming pledge, investing in low-carbon solutions and technology that will further reduce the carbon footprints of our homes and our impact on the planet.

## Energy efficiency built in:

- ✓ **PEA rating – B**  
Our typical B rating makes our homes much more efficient than traditional D-rated homes.
- ✓ **Up to 400mm roof space insulation**  
Warmer in winter, cooler in summer, reducing energy bills.
- ✓ **Argon gas filled double glazing**  
Greater insulation and reduced heat loss.
- ✓ **Energy efficient lighting**  
We use energy-saving LED lightbulbs in all our homes.
- ✓ **A-rated appliances**  
Many of our kitchen appliances have a highly efficient A rating.
- ✓ **A-rated boilers**  
Our condenser boilers far outperform non-condensing ones.
- ✓ **Local links**  
We're located close to amenities and public transport to help reduce your travel footprint.
- ✓ **Ultra-fast broadband**  
FibreNest fibre-to-the-home connectivity helps you live and work at home more flexibly.
- ✓ **Lower-carbon bricks**  
Our concrete bricks typically use 28% less carbon in manufacture than clay, giving total lifetime carbon savings of 2.4 tonnes of CO<sub>2</sub> per house built.

## Eco goodies

When you move in to your new Persimmon home you'll find some of our favourite eco brands in your Homemove box. These products are plastic free, refillable and ethically sourced.





Your home, your way

# Finishing Touches to make it yours

Our goal is to make your house feel like your home before  
you've even collected the keys.

Key to achieving this is giving you the creative freedom to add your own style and personality to every room through our fabulous Finishing Touches collection.

Featuring the very latest designs from a host of leading brands, Finishing Touches lets you personalise your home inside and out. And rest assured, every upgrade and item available has been carefully chosen to complement the style

and finish of your new home. Of course, the real beauty is that all these extras will be ready for the day you move in.

Thanks to our impressive buying power we can offer almost any upgrade you can imagine at a highly competitive price. It can all be arranged from the comfort and convenience of one of our marketing suites, in a personal design appointment.

## You can choose:



Kitchens



Appliances



Bathrooms



Flooring



Wardrobes



Fixtures & fittings

"One of the most exciting things about buying a brand new home is putting your own stamp on a blank canvas."





## Share & win!

Share your love for your new Persimmon home and you could win a £100 IKEA voucher. For inspiration, check out past winners' homes on our Instagram page @persimmon\_homes

**#lovemypersimmonhome**

## The earlier you reserve, the greater the choice

We'll always try and accommodate the Finishing Touches you want, but they are build-stage dependent, so the earlier you reserve the better.

**[persimmonhomes.com/finishingtouches](https://persimmonhomes.com/finishingtouches)**

Finishing Touches are subject to availability and stage of construction. Prices for your specific home type will be in our price list. For a full list of Finishing Touches available for your home, please contact the sales advisor on site.



6 reasons why it pays to buy new

## Did you know?

Most of the benefits of buying new are obvious, but some are not. Here's a quick summary of the key reasons why it's such a smart move:

1.

### No chain

Few things are more annoying in the home buying process than a time-consuming chain you can't control. Buying new limits the chance of getting involved in one.

2.

### Energy efficient

Our homes include cost-effective combi boilers, first-rate loft insulation and draught-free double glazed windows to meet stringent energy-efficient standards, keeping your energy bills as low as possible.

3.

### Brand new

Absolutely everything in your new home is brand new. You get all the latest designs and tech, complete with manufacturers' warranties. Win-win.

4.

### More ways to buy

We offer a range of schemes to help get you on the property ladder, including Home Change and Part Exchange.

5.

### 10 year warranty

All our new homes come with a ten-year, insurance-backed warranty, as well as our own two-year Persimmon warranty. In the unlikely event you ever need to claim, our Customer Care Team are there to help you.

6.

### Safe & secure

All our homes are built from fire-retardant materials and come with fitted smoke alarms and fire escape windows. They're also far more secure than older buildings thanks to the security locks and lighting we use.

[persimmonhomes.com](https://www.persimmonhomes.com)



## **And did we mention you'll have more time for dancing?**

Buying new means you'll spend far less time on repairs and maintenance, after all, life's too short to spend every weekend doing DIY.





## Bishops Mead Phase 2

Par Four Lane  
Lydney  
Gloucestershire  
GL15 5GB

T: 01594 800 595  
E: [bishopmead.ewal@persimmonhomes.com](mailto:bishopmead.ewal@persimmonhomes.com)  
[persimmonhomes.com/bishopmead](https://persimmonhomes.com/bishopmead)

## Head Office

Persimmon Homes East Wales  
Llantrisant Business Park  
Llantrisant  
CF72 8YP

T: 01443 223 653  
E: [ewalsales@persimmonhomes.com](mailto:ewalsales@persimmonhomes.com)  
[persimmonhomes.com](https://persimmonhomes.com)



Issue: August 2024 (Re-print) Ref: 270-627

Persimmon plc, Registered office: Persimmon House, Fulford, York YO19 4FE Registered in England no: 1818486

Bishops Mead Phase 2 is a marketing name only. The copyright in this document and design is confidential to and the property of Persimmon Homes Developments 2024. These details are intended to give a general idea of the type of home but they do not form part of any specification or contract. The dimensions are approximate and may vary depending on internal finish. By the time you read this some of the details may have changed because of the Persimmon Homes policy of continually updating and improving design features. Therefore, please be sure to check the plan and specification in the sales office to keep you up-to-date with the latest improvements. The vendors of this property give notice that: (i) the particulars are produced in good faith, are set out as a general guide only and do not constitute any part of a contract; (ii) no person in the employment of Persimmon Homes or their authorised agents has any authority to make or give any representation or warranty whatever in relation to this property. Persimmon Homes is compliant with the New Homes Quality Code. Please ask your sales advisor if you have any further questions.