

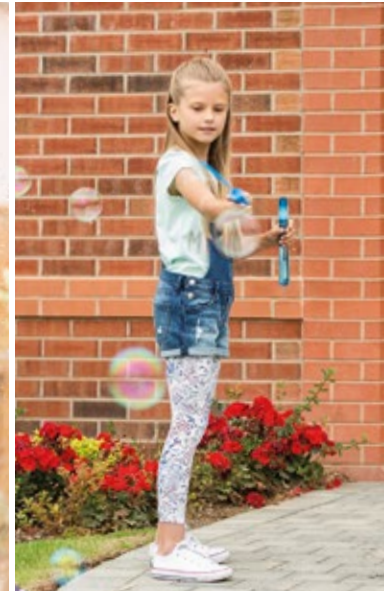
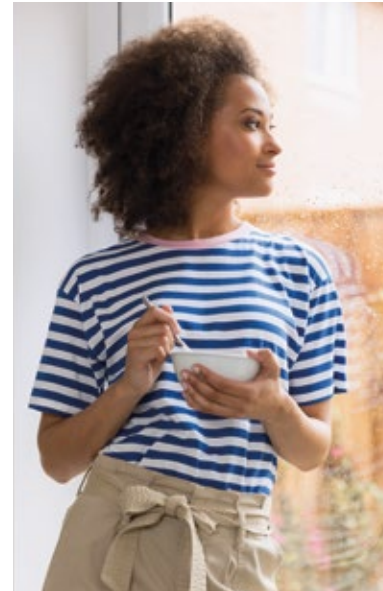


**Milby Grange  
Boroughbridge**

**millerhomes**

*the place to be®*

A new home. The start of a whole new chapter for you and your family. And for us, the part of our job where bricks and mortar becomes a place filled with activity and dreams and fun and love. We put a huge amount of care into the houses we build, but the story's not finished until we match them up with the right people. So, once you've chosen a Miller home, we'll do everything we can to make the rest of the process easy, even enjoyable. From the moment you make your decision until you've settled happily in, we'll be there to help.



|                         |    |
|-------------------------|----|
| Living in Boroughbridge | 02 |
| Welcome home            | 06 |
| Floor plans             | 08 |
| How to find us          | 40 |



# Plot Information

- Tolkien**  
See Page 08
- Darwin**  
See Page 10
- Darwin DA**  
See Page 12
- Malory**  
See Page 14
- Buchan**  
See Page 16
- Buchan DA**  
See Page 18
- Ashbery**  
See Page 20
- Repton**  
See Page 22
- Tressell**  
See Page 24
- Mitford**  
See Page 26
- Buttermere**  
See Page 28
- Jura**  
See Page 30
- Shakespeare**  
See Page 32
- Affordable Housing**



The artist's impressions (computer-generated graphics) have been prepared for illustrative purposes and are indicative only. They do not form part of any contract, or constitute a representation or warranty. External appearance may be subject to variation upon completion of the project. Please note that the site plan is not drawn to scale.



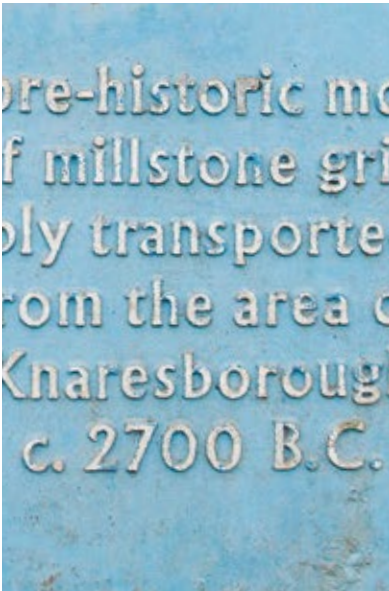
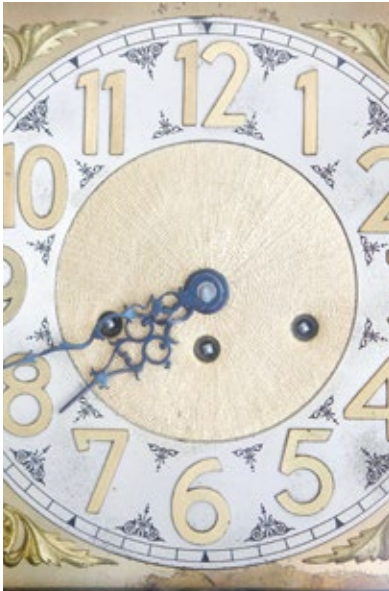
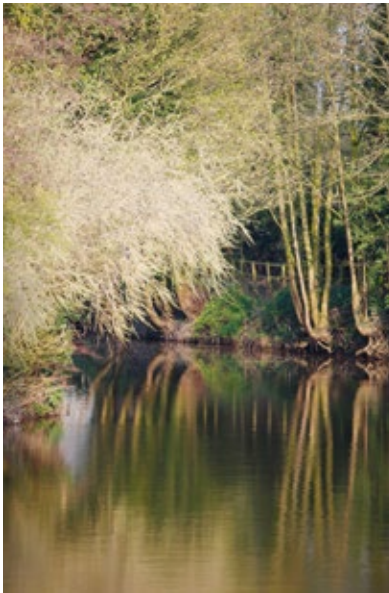
Quality of life is about the details of everyday living. From the little things, like knowing the nearest place to pick up a pint of milk, to more important matters like finding the right school or having a health centre nearby, you need to know that the community you're moving to will support you and your family, as well as being a pleasant place to live. So here's some useful information about the area around Milby Grange.





Boroughbridge grew in importance due to its strategic location midway between London and Edinburgh, and today its proximity to the A1(M) maintains that advantage. It is also in easy reach of Ripon, Harrogate and York, with Leeds just 40 minutes drive away. Buses between York and Harrogate pass through the town at two hour intervals, with services between Knaresborough and Rocliffe every ninety minutes. Cattle Railway Station, ten miles to the south, offers services to York, Harrogate and Leeds.

The town centre, reached via a pleasant ten-minute walk across the River Ure, provides a comprehensive range of shops and services, interspersed with picturesque pubs and cafés. As well as a large convenience store, there are bakers, newsagents, butchers, florists, greengrocers, a sweet shop and a delicatessen, with a farm shop less than half a mile away. The local traders are complemented by a Morrisons supermarket, where there are also recycling facilities for household waste.





Close to the River Ure and just half a mile from the delightfully unspoiled town centre of Boroughbridge, this beautifully landscaped selection of attractive, energy efficient three, four and five bedroom homes sits in delightful rural surroundings peppered with charming villages. Yet the strategic location, less than a mile and a half from the A1(M) and just ten miles from Harrogate, offers a convenient base for travel throughout Yorkshire and the north-east. Welcome to Milby Grange...

The artist's impressions (computer-generated graphics) have been prepared for illustrative purposes and are indicative only. They do not form part of any contract, or constitute a representation or warranty. External appearance may be subject to variation upon completion of the project.



# Tolkien

### Overview

Entered by a small private vestibule on the first floor, the charming master bedroom of the Tolkien includes a private staircase leading to a dormer-windowed, en-suite retreat that has a timeless, distinctive sense of peaceful seclusion.

### Ground Floor

- Lounge**  
3.192m max x 4.272m max  
10'6" x 14'0"
- Dining**  
1.816m x 2.536m  
5'11" x 8'4"
- Kitchen**  
2.324m x 3.065m  
7'7" x 10'1"
- WC**  
0.855m x 1.630m  
2'10" x 5'4"
- Bedroom 2**  
4.140m max x 2.600m max  
13'7" x 8'6"
- Bedroom 3**  
2.135m x 2.734m  
7'0" x 9'0"
- Bathroom**  
2.135m x 1.910m  
7'0" x 6'3"

### Second Floor

- Master Bedroom**  
3.192m x 2.869m  
1.185 HGT. L.  
10'6" x 9'5"
- En-Suite**  
2.084m max x 1.827m  
1.323 HGT. L.  
6'10" x 6'0"

### Plots

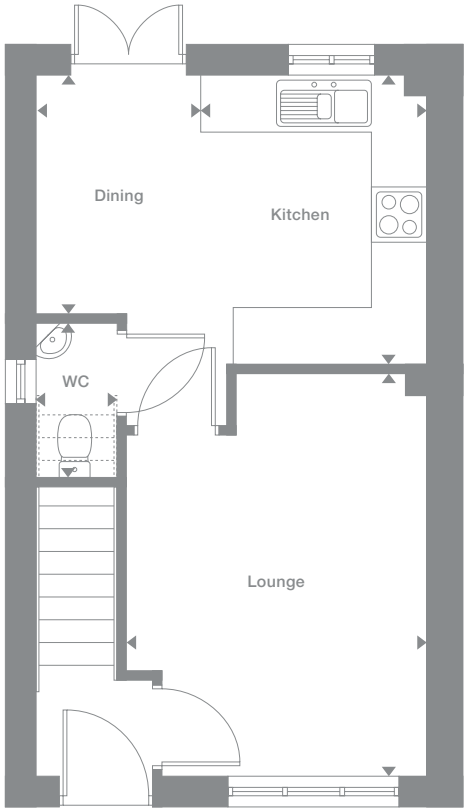
46, 47\*,  
65\*, 66,  
107\*, 108,  
119\*, 120

### Floor Space

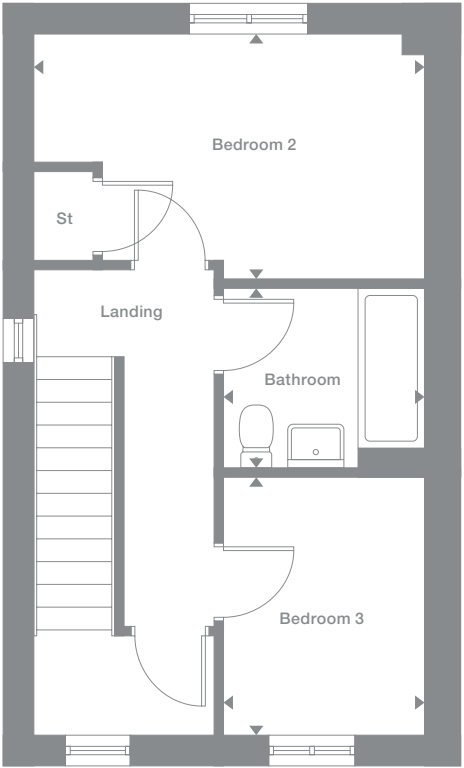
886 sq ft



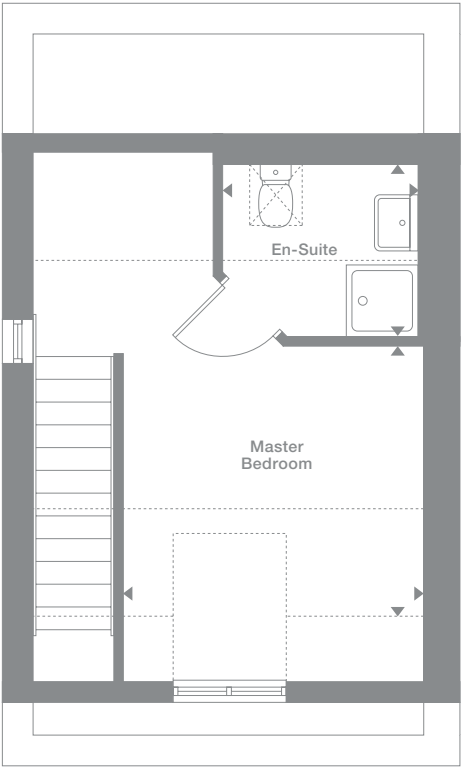
Ground Floor



First Floor



Second Floor



Photography represents typical Miller Homes' interiors and exteriors. All plans in this brochure are not drawn to scale and are for illustrative purposes only. Consequently, they do not form part of any contract. Room layouts are provisional and may be subject to alteration. Please refer to the 'Important Notice' section at the back of this brochure for more information.

\* Plots are a mirror image of plans shown above

† End terrace only

> Window may be affected by attached garage to Plots 46, 47, 65, 66, 119 and 120. Please speak to Development Sales Manager for details

# Darwin

### Overview

French doors in both the dining room and the long dual-aspect living room bring a light, airy ambience to the Darwin, and integrate the garden and the interior in ways that maximise the pleasure brought by both.

### Ground Floor

- Lounge  
3.080m x 5.450m  
10'1" x 17'11"
- Dining  
2.556m x 2.728m  
8'5" x 8'11"
- Kitchen  
2.556m x 2.722m  
8'5" x 8'11"
- WC  
1.590m x 0.949m  
5'3" x 3'1"

### First Floor

- Master Bedroom  
3.138m x 3.440m max  
10'4" x 11'3"
- En-Suite  
1.933m x 1.693m  
6'4" x 5'7"
- Bedroom 2  
2.594m x 2.863m  
8'6" x 9'5"
- Bedroom 3  
2.594m x 1.859m  
8'6" x 6'1"
- Bathroom  
2.048m x 1.917m  
6'9" x 6'3"

### Plots

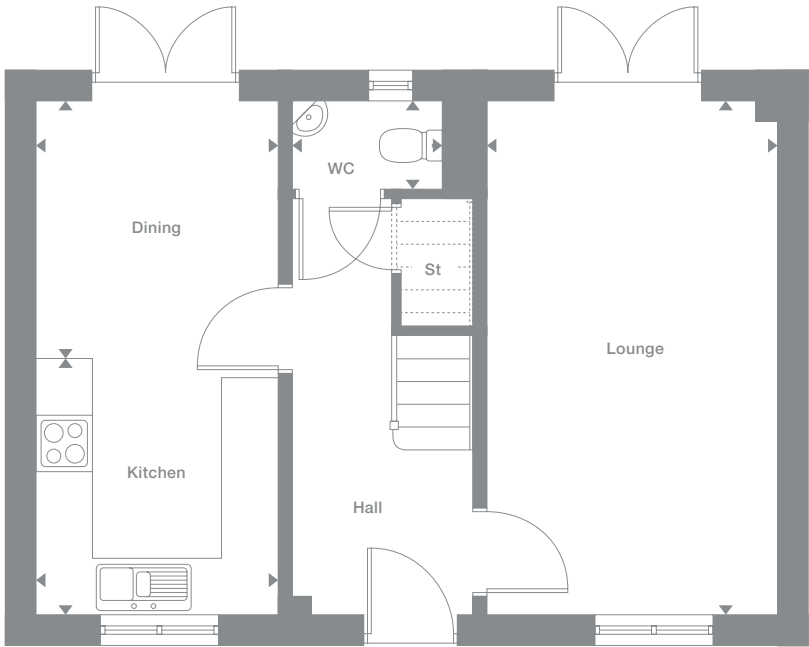
79\*, 118\*

### Floor Space

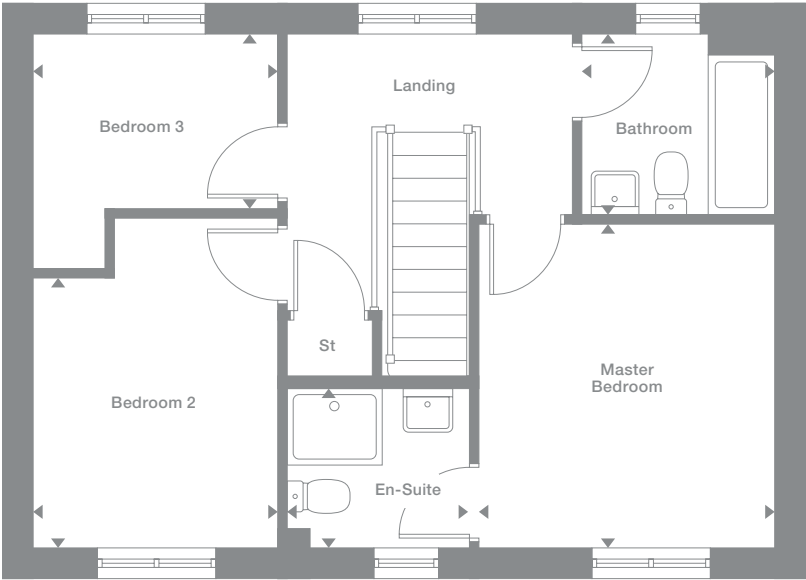
921 sq ft



Ground Floor



First Floor



Photography represents typical Miller Homes' interiors and exteriors. All plans in this brochure are not drawn to scale and are for illustrative purposes only. Consequently, they do not form part of any contract. Room layouts are provisional and may be subject to alteration. Please refer to the 'Important Notice' section at the back of this brochure for more information.

\* Plots are a mirror image of plans shown above



# Darwin DA

**Overview**  
The impressively broad bay window of the dual-aspect living room, the french doors that keep the kitchen cool and airy and the superb gallery landing are amongst the many features that make this an exceptionally bright, welcoming home.

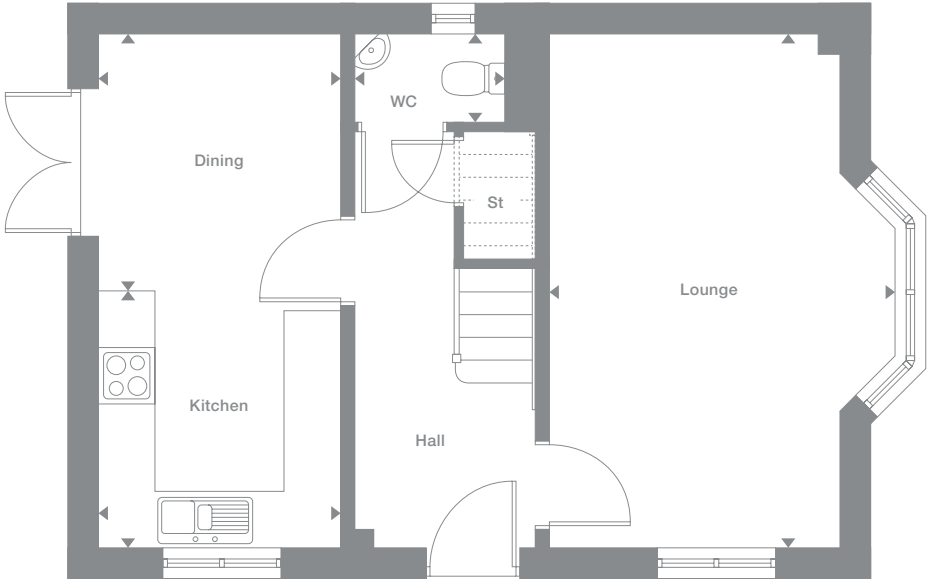
|  |   |
|--|---|
| <b>Ground Floor</b>                                    | <b>First Floor</b>  |
| <b>Lounge</b><br>3.673m max x 5.450m<br>12'1" x 17'11" | <b>Master Bedroom</b><br>3.138m x 3.440m max<br>10'4" x 11'3" |
| <b>Dining</b><br>2.556m x 2.728m<br>8'5" x 8'11"       | <b>En-Suite</b><br>1.933m x 1.693m<br>6'4" x 5'7"             |
| <b>Kitchen</b><br>2.556m x 2.722m<br>8'5" x 8'11"      | <b>Bedroom 2</b><br>2.594m max x 2.863m<br>8'6" x 9'5"        |
| <b>WC</b><br>1.590m x 0.949m<br>5'3" x 3'1"            | <b>Bedroom 3</b><br>2.594m x 1.859m<br>8'6" x 6'1"            |
|  | <b>Bathroom</b><br>2.048m x 1.917m<br>6'9" x 6'3"             |

**Plots**  
35, 95

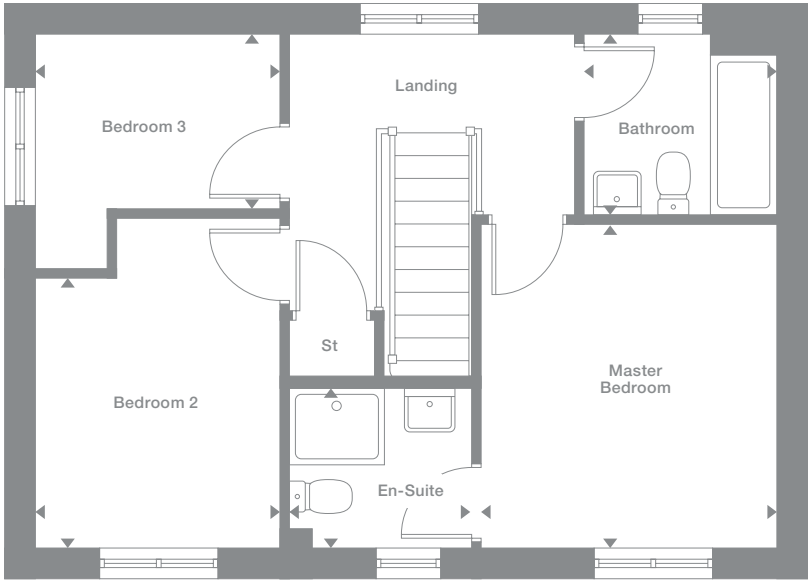
**Floor Space**  
933 sq ft



Ground Floor



First Floor



Photography represents typical Miller Homes' interiors and exteriors. All plans in this brochure are not drawn to scale and are for illustrative purposes only. Consequently, they do not form part of any contract. Room layouts are provisional and may be subject to alteration. Please refer to the 'Important Notice' section at the back of this brochure for more information.

\* Plots are a mirror image of plans shown above

# Malory

## Overview

Bringing a traditional elegance to the façade, the bay window also introduces an attractive focal point to the L-shaped lounge. French doors add flexibility to the dining area, transforming it into an airy, light-filled space, and the en-suite master bedroom blends luxury with convenience.

## Ground Floor

- Lounge**  
3.850m max x 4.950m max  
12'8" x 16'3"
- Dining**  
1.950m x 3.692m  
6'5" x 12'1"
- Kitchen**  
1.852m x 3.692m  
6'1" x 12'1"
- WC**  
2.006m x 1.020m  
6'7" x 3'4"

## First Floor

- Master Bedroom**  
3.850m max x 3.047m  
12'8" x 10'0"
- En-Suite**  
2.844m max x 1.117m max  
9'4" x 3'8"
- Bedroom 2**  
4.019m x 4.192m max  
13'2" x 13'9"
- Bedroom 3**  
2.838m x 3.547m  
9'4" x 11'8"
- Bathroom**  
3.010m max x 1.700m max  
9'11" x 5'7"

## Plots

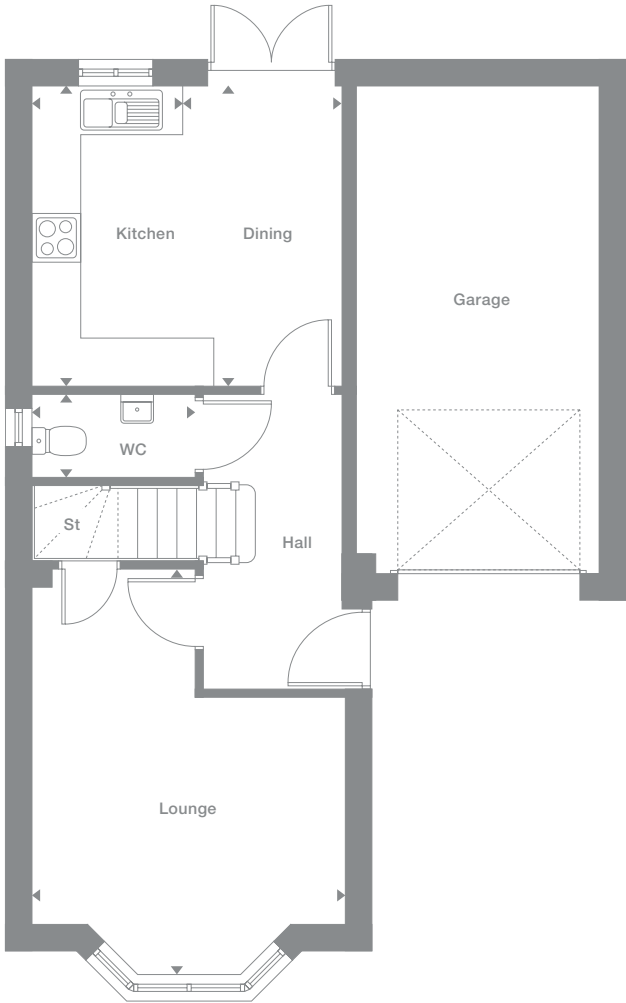
11, 12\*,  
23\*, 24,  
34, 71,  
78\*, 80,  
131, 132\*

## Floor Space

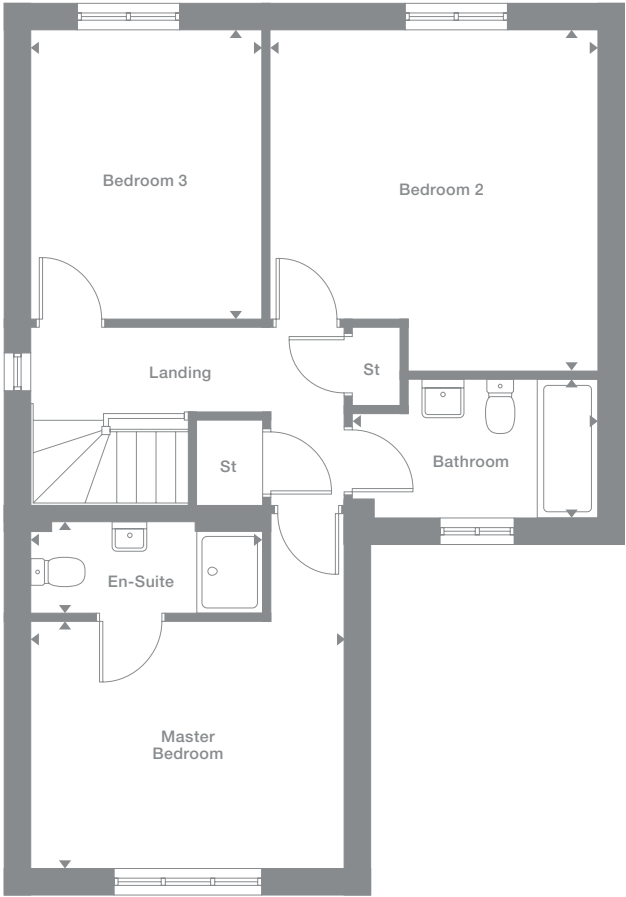
1,061 sq ft



Ground Floor



First Floor



Photography represents typical Miller Homes' interiors and exteriors. All plans in this brochure are not drawn to scale and are for illustrative purposes only. Consequently, they do not form part of any contract. Room layouts are provisional and may be subject to alteration. Please refer to the 'Important Notice' section at the back of this brochure for more information.

\* Plots are a mirror image of plans shown above



# Buchan

**Overview**  
Windows at either end bring a beautifully changing natural light to the impressively long kitchen and dining room of the Buchan, while the separate study is perfect for working from home or creating a computer suite.

|  |   |
|--|---|
| <b>Ground Floor</b>                                | <b>First Floor</b>  |
| <b>Lounge</b><br>3.450m x 4.797m<br>11'4" x 15'9"  | <b>Master Bedroom</b><br>3.507m max x 3.793m max<br>11'6" x 12'5" |
| <b>Dining</b><br>2.763m x 3.320m<br>9'1" x 10'11"  | <b>En-Suite</b><br>2.238m max x 2.044m max<br>7'4" x 6'8"         |
| <b>Kitchen</b><br>2.763m x 3.630m<br>9'1" x 11'11" | <b>Bedroom 2</b><br>2.805m max x 3.762m max<br>9'2" x 12'4"       |
| <b>WC</b><br>1.620m x 0.945m<br>5'4" x 3'1"        | <b>Bedroom 3</b><br>2.519m x 3.095m<br>8'3" x 10'2"               |
| <b>Laundry</b><br>1.937m x 1.799m<br>6'4" x 5'11"  | <b>Bedroom 4</b><br>2.411m x 3.064m<br>7'11" x 10'1"              |
| <b>Study</b><br>2.323m x 2.060m<br>7'7" x 6'9"     | <b>Bathroom</b><br>3.048m max x 1.700m max<br>10'0" x 5'7"        |

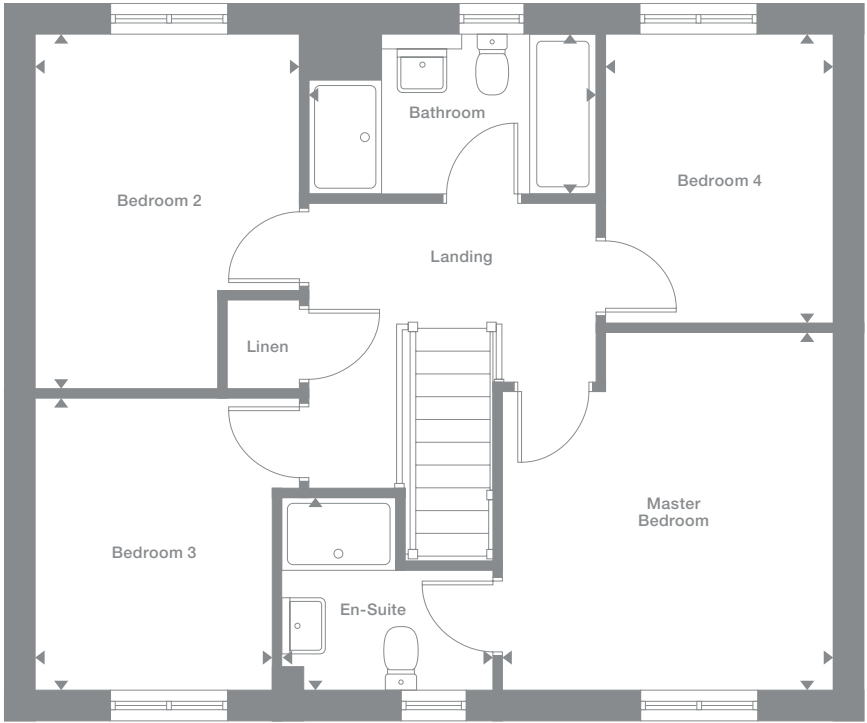
|   |                                   |
|---|-----------------------------------|
| <b>Plots</b><br>43, 63, 64*,<br>67, 87, 88,<br>94*, 117*, 140 | <b>Floor Space</b><br>1,264 sq ft |
|---|-----------------------------------|



## Ground Floor



## First Floor



Photography represents typical Miller Homes' interiors and exteriors. All plans in this brochure are not drawn to scale and are for illustrative purposes only. Consequently, they do not form part of any contract. Room layouts are provisional and may be subject to alteration. Please refer to the 'Important Notice' section at the back of this brochure for more information.

\* Plots are a mirror image of plans shown above

# Buchan DA

**Overview**  
The broad hallway, feature staircase and superb gallery landing set a spacious tone that enhances each room of this immensely comfortable home, while the beautifully equipped bathroom, kitchen and laundry room demonstrate a meticulous attention to detail.

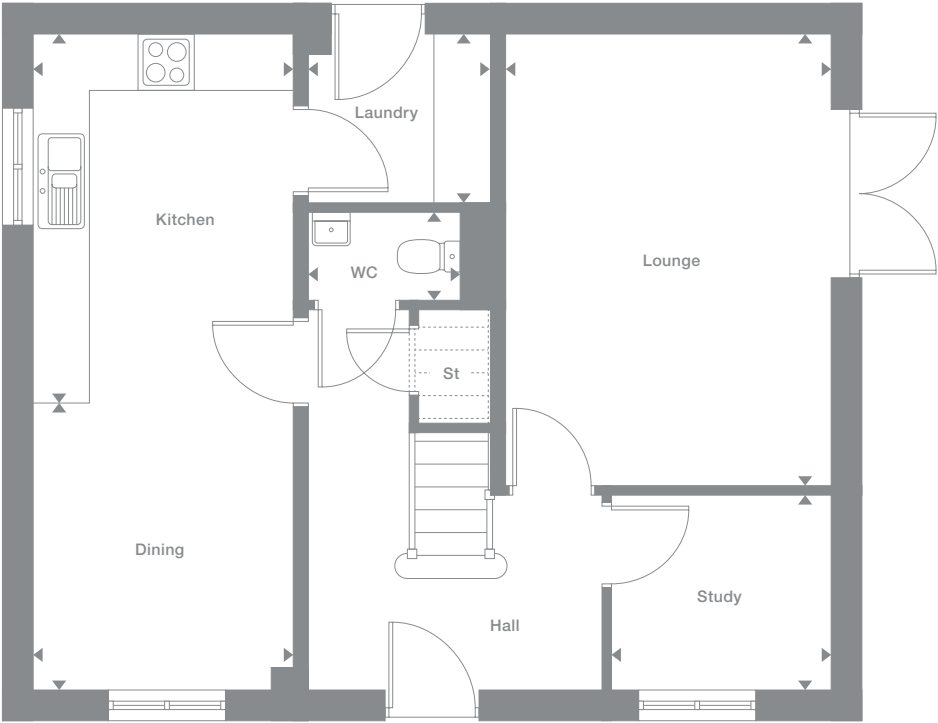
|   |   |
|---|---|
| <b>Ground Floor</b>                               | <b>First Floor</b>  |
| <b>Lounge</b><br>3.450m x 4.797m<br>11'4" x 15'9" | <b>Master Bedroom</b><br>3.507m x 3.793m max<br>11'6" x 12'5" |
| <b>Dining</b><br>2.763m x 3.149m<br>9'1" x 10'4"  | <b>En-Suite</b><br>2.238m x 2.044m max<br>7'4" x 6'8"         |
| <b>Kitchen</b><br>2.763m x 3.801m<br>9'1" x 12'6" | <b>Bedroom 2</b><br>2.805m max x 3.762m max<br>9'2" x 12'4"   |
| <b>WC</b><br>1.620m x 0.945m<br>5'4" x 3'1"       | <b>Bedroom 3</b><br>2.519m x 3.095m<br>8'3" x 10'2"           |
| <b>Laundry</b><br>1.937m x 1.799m<br>6'4" x 5'11" | <b>Bedroom 4</b><br>2.411m x 3.064m<br>7'11" x 10'1"          |
| <b>Study</b><br>2.323m x 2.060m<br>7'7" x 6'9"    | <b>Bathroom</b><br>3.048m max x 1.700m max<br>10'0" x 5'7"    |

**Plots**  
77\*

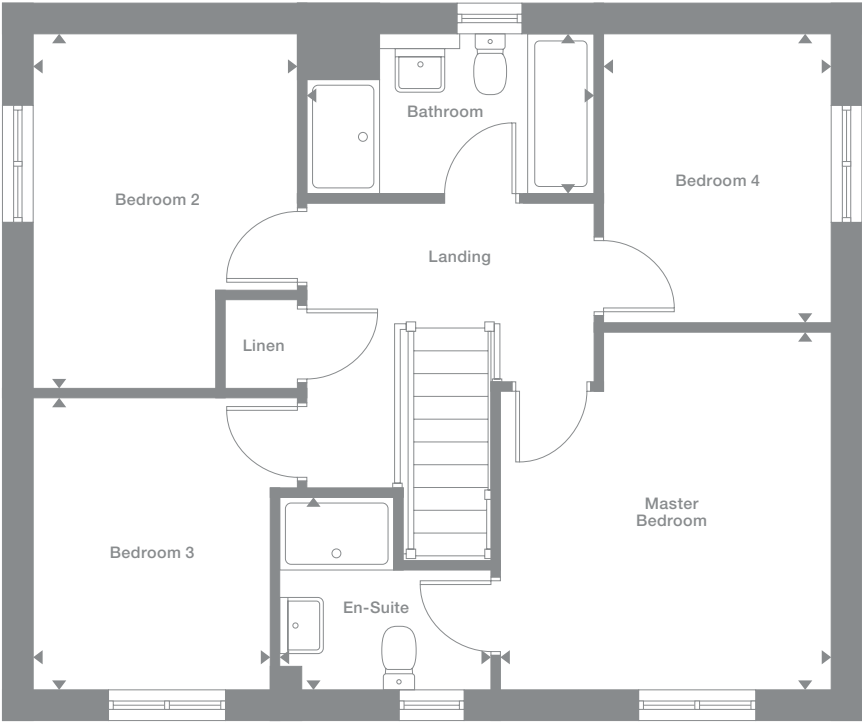
**Floor Space**  
1,264 sq ft



Ground Floor



First Floor



Photography represents typical Miller Homes' interiors and exteriors. All plans in this brochure are not drawn to scale and are for illustrative purposes only. Consequently, they do not form part of any contract. Room layouts are provisional and may be subject to alteration. Please refer to the 'Important Notice' section at the back of this brochure for more information.

\* Plots are a mirror image of plans shown above



# Ashbery

### Overview

Complemented by a separate laundry room, the smart, well-equipped kitchen and light-filled garden dining room of the Ashbery form an inviting social space that will maximise the everyday pleasures of relaxing with family, friends and conversation.

### Ground Floor

#### Lounge

3.277m x 5.560m max  
10'9" x 18'3"

#### Kitchen

4.033m x 3.075m  
13'3" x 10'1"

#### Dining

2.718m x 3.075m  
8'11" x 10'1"

#### Laundry

1.663m x 1.810m  
5'5" x 5'11"

#### WC

1.663m x 1.172m  
5'5" x 3'10"

### First Floor

#### Master Bedroom

3.277m x 3.916m max  
10'9" x 12'10"

#### En-Suite

2.240m max x 1.497m  
7'4" x 4'11"

#### Bedroom 2

2.748m x 4.148m max  
9'0" x 13'7"

#### Bedroom 3

3.398m max x 3.137m max  
11'2" x 10'4"

#### Bedroom 4

2.675m max x 4.184m max  
8'9" x 13'9"

#### Bathroom

2.249m x 1.928m  
7'5" x 6'4"

### Plots

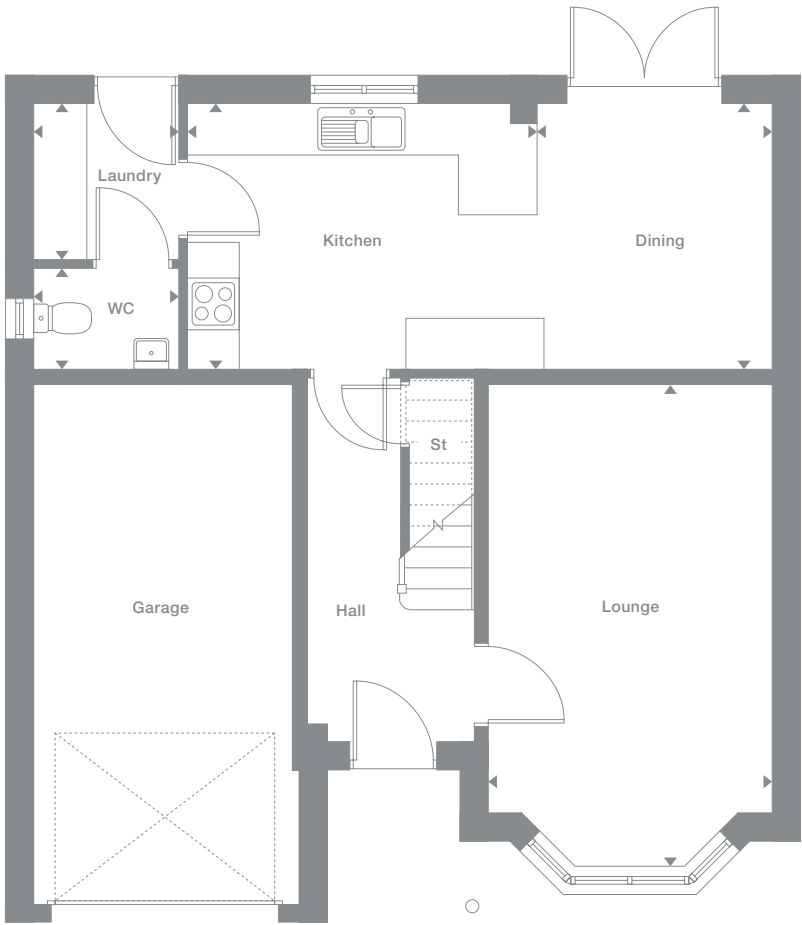
6\*, 22\*, 70\*

### Floor Space

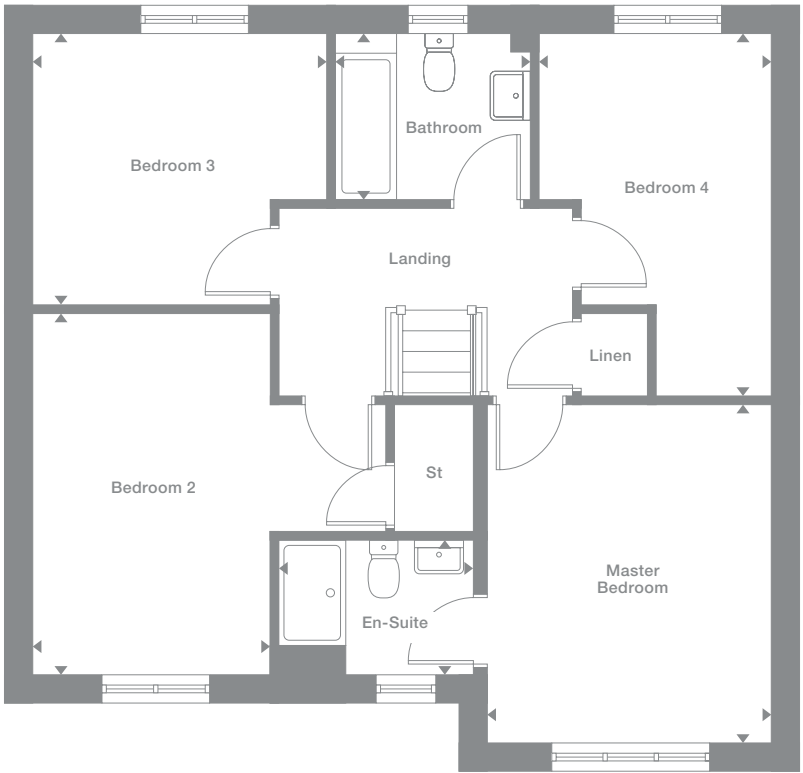
1,275 sq ft



### Ground Floor



### First Floor



Photography represents typical Miller Homes' interiors and exteriors. All plans in this brochure are not drawn to scale and are for illustrative purposes only. Consequently, they do not form part of any contract. Room layouts are provisional and may be subject to alteration. Please refer to the 'Important Notice' section at the back of this brochure for more information.

\* Plots are a mirror image of plans shown above

# Repton

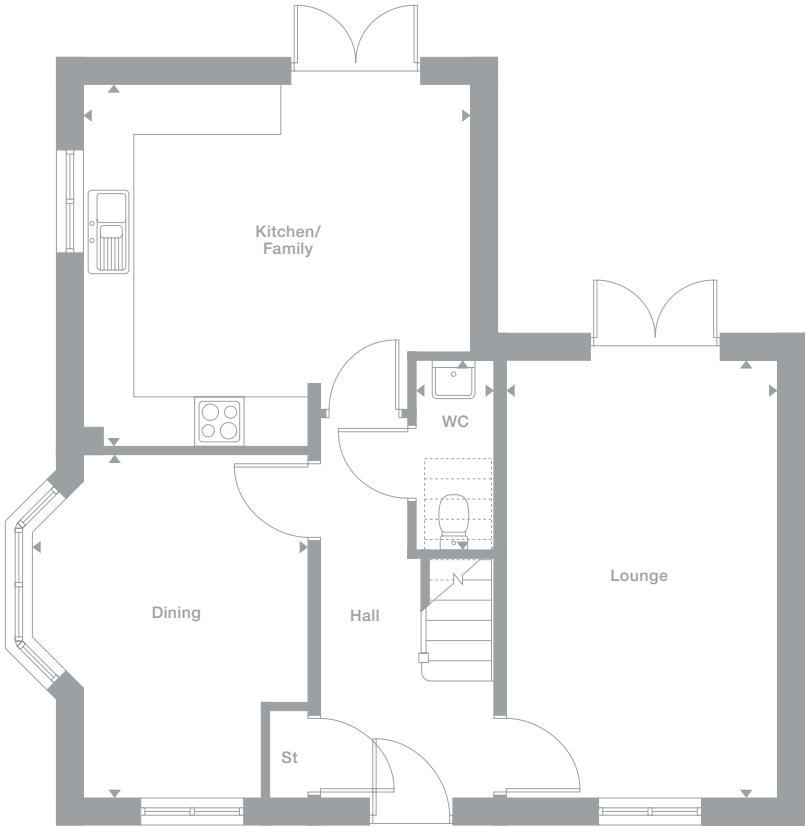
**Overview**  
The dual-aspect lounge and superb bay-windowed dining room are amongst a wealth of features that give the Repton an unmistakable, prestigious elegance. With dual french doors and a feature gallery landing, this is bright, spacious home of real distinction.

|   |  |
|---|--|
| <b>Ground Floor</b>   | <b>First Floor</b>   |
| <b>Lounge</b><br>3.268m x 5.275m<br>10'9" x 17'4"                 | <b>Master Bedroom</b><br>4.642m max x 2.749m max<br>15'3" x 9'0" |
| <b>Kitchen/Family</b><br>4.642m max x 4.358m max<br>15'3" x 14'4" | <b>En-Suite</b><br>2.471m max x 1.210m<br>8'1" x 4'0"            |
| <b>Dining</b><br>3.281m max x 4.134m<br>10'9" x 13'7"             | <b>Bedroom 2</b><br>5.562m max x 2.647m<br>18'3" x 8'8"          |
| <b>WC</b><br>0.937m x 2.293m<br>3'1" x 7'6"                       | <b>Bedroom 3</b><br>3.325m max x 2.885m<br>10'11" x 9'6"         |
|   | <b>Bedroom 4</b><br>2.339m x 2.297m<br>7'8" x 7'6"               |
|   | <b>Bathroom</b><br>2.696m x 1.700m<br>8'10" x 5'7"               |

|   |                                   |
|---|-----------------------------------|
| <b>Plots</b><br>42, 59*,<br>68, 69*,<br>100*, 103,<br>116*, 124*,<br>128* | <b>Floor Space</b><br>1,290 sq ft |
|---|-----------------------------------|



## Ground Floor



## First Floor



Photography represents typical Miller Homes' interiors and exteriors. All plans in this brochure are not drawn to scale and are for illustrative purposes only. Consequently, they do not form part of any contract. Room layouts are provisional and may be subject to alteration. Please refer to the 'Important Notice' section at the back of this brochure for more information.

\* Plots are a mirror image of plans shown above



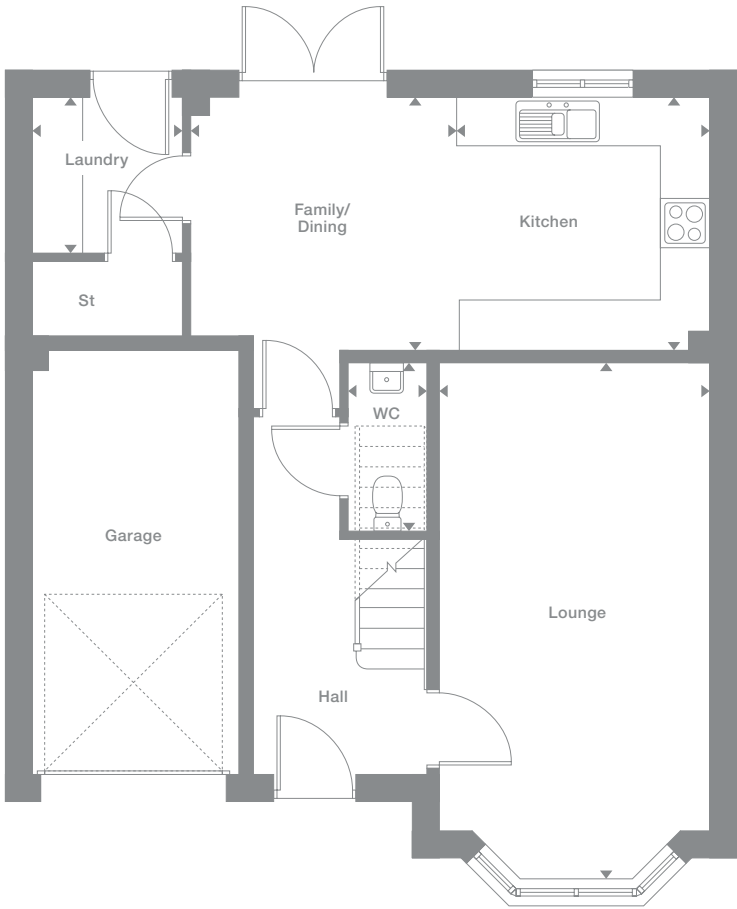
**Overview**  
The contemporary kitchen, family and dining room, with its french doors, present a welcoming setting for entertaining. Upstairs, two bedrooms have en-suite showers creating a luxurious private retreat.

|  |   |
|--|---|
| <b>Ground Floor</b>  | <b>First Floor</b>  |
| <b>Lounge</b><br>3.264m x 6.212m max<br>10'9" x 20'5"        | <b>Master Bedroom</b><br>3.264m x 4.436m<br>10'9" x 14'7"   |
| <b>Kitchen</b><br>3.052m x 3.060m max<br>10'0" x 10'0"       | <b>En-Suite 1</b><br>2.275m max x 1.400m max<br>7'6" x 4'7" |
| <b>Family/Dining</b><br>3.207m x 3.060m max<br>10'6" x 10'0" | <b>Bedroom 2</b><br>4.115m max x 3.193m<br>13'6" x 10'6"    |
| <b>Laundry</b><br>1.812m x 1.904m<br>5'11" x 6'3"            | <b>En-Suite 2</b><br>2.498m max x 1.806m<br>8'2" x 5'11"    |
| <b>WC</b><br>0.946m x 2.028m<br>3'1" x 6'8"                  | <b>Bedroom 3</b><br>3.336m max x 2.807m<br>10'11" x 9'3"    |
|  | <b>Bedroom 4</b><br>2.498m x 2.980m<br>8'2" x 9'9"          |
|  | <b>Bathroom</b><br>2.144m max x 1.794m<br>7'0" x 5'11"      |

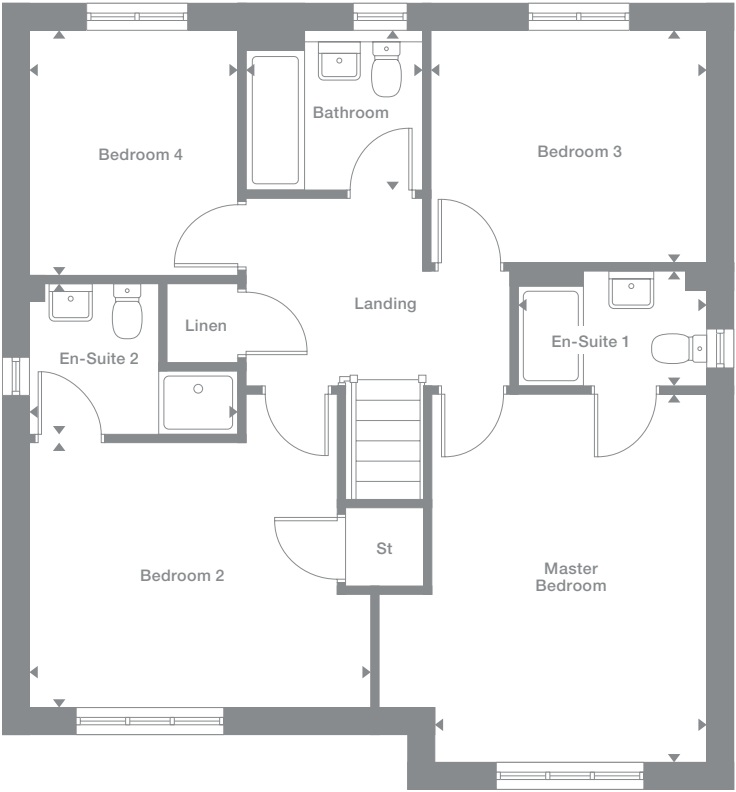
|  |                                   |
|--|-----------------------------------|
| <b>Plots</b><br>3*, 5, 53,<br>54*, 81*,<br>123*, 130,<br>137, 138* | <b>Floor Space</b><br>1,341 sq ft |
|--|-----------------------------------|



Ground Floor



First Floor



Photography represents typical Miller Homes' interiors and exteriors. All plans in this brochure are not drawn to scale and are for illustrative purposes only. Consequently, they do not form part of any contract. Room layouts are provisional and may be subject to alteration. Please refer to the 'Important Notice' section at the back of this brochure for more information.

\* Plots are a mirror image of plans shown above

# Mitford

## Overview

Features like the elegant bay window and the light-filled gallery landing illustrate the unmistakable quality of this superb home, and a separate laundry room helps to keep the kitchen free for creative cooking and conversation.

## Ground Floor

- Lounge

3.651m x 5.139m max  
12'0" x 16'10"
- Kitchen

3.922m x 2.993m  
12'10" x 9'10"
- Breakfast

3.224m x 3.885m  
10'7" x 12'9"
- WC

2.087m x 1.082m  
6'10" x 3'7"
- Laundry

2.087m x 1.660m  
6'10" x 5'5"
- Study

2.087m x 2.060m  
6'10" x 6'9"
- First Floor

Master Bedroom

3.651m max x 4.603m max  
12'0" x 15'1"
- En-Suite

1.618m max x 2.073m max  
5'4" x 6'10"
- Bedroom 2

3.793m x 2.758m  
12'5" x 9'1"
- Bedroom 3

3.260m x 2.758m  
10'8" x 9'1"
- Bedroom 4

2.087m x 3.147m  
6'10" x 10'4"
- Bathroom

2.558m max x 2.040m max  
8'5" x 6'8"

## Plots

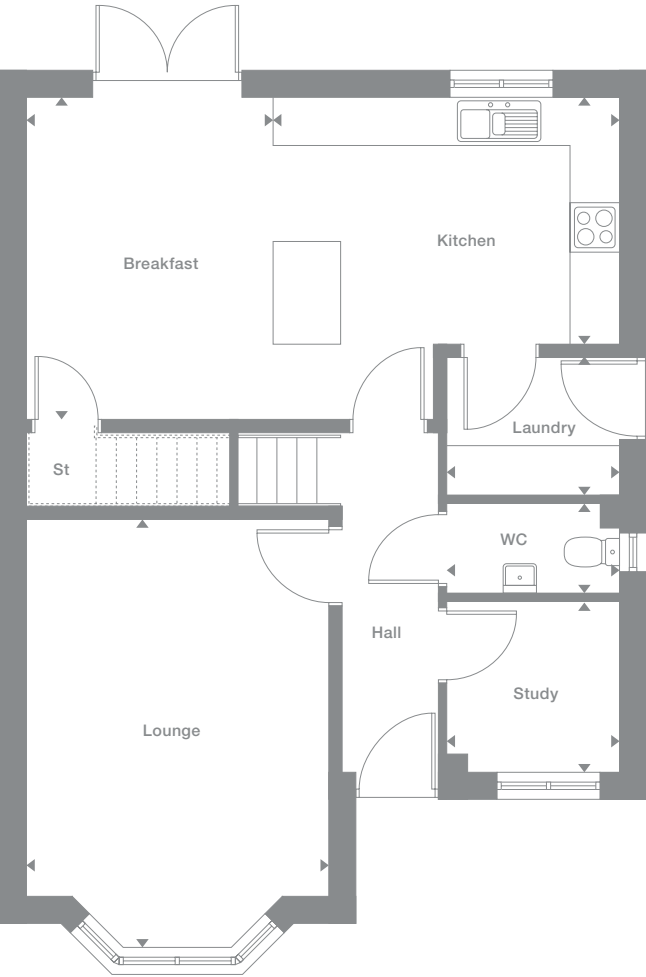
40, 41\*,  
44\*, 45,  
86\*, 141,  
142\*, 143

## Floor Space

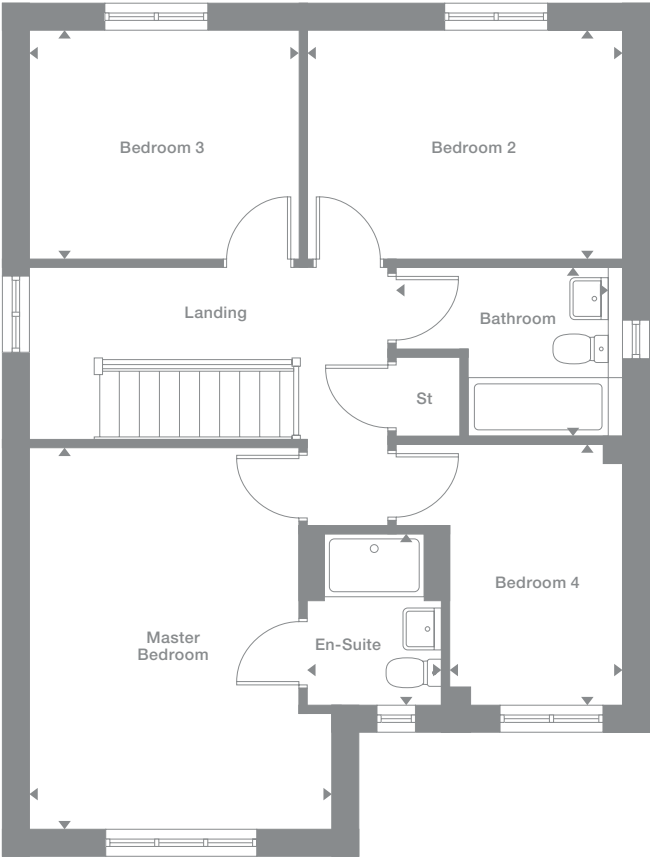
1,381 sq ft



## Ground Floor



## First Floor



Photography represents typical Miller Homes' interiors and exteriors. All plans in this brochure are not drawn to scale and are for illustrative purposes only. Consequently, they do not form part of any contract. Room layouts are provisional and may be subject to alteration. Please refer to the 'Important Notice' section at the back of this brochure for more information.

\* Plots are a mirror image of plans shown above



# Buttermere

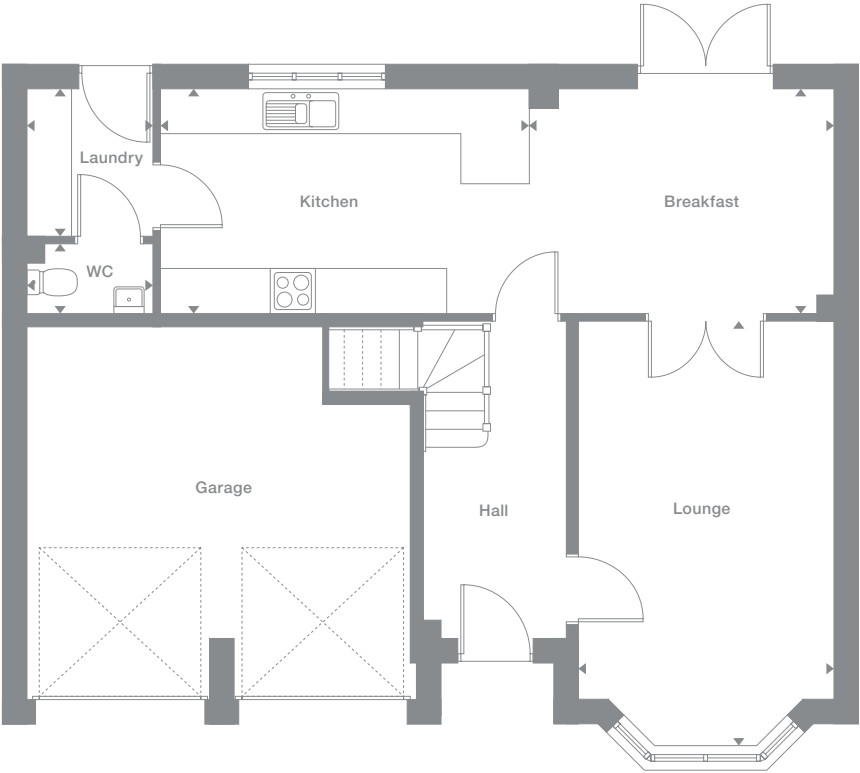
**Overview**  
With its spectacular contemporary kitchen and impressive dining area, perfect for both family meals and formal entertaining, the Buttermere is a prestigious home of uncompromising quality. Three of the five bedrooms include generously sized en-suite showers.

|   |  |
|---|--|
| <b>Ground Floor</b>                                   | <b>First Floor</b>   |
| <b>Lounge</b><br>3.391m x 5.614m max<br>11'2" x 18'5" | <b>Master Bedroom</b><br>2.806m max x 5.184m<br>9'2" x 17'0" |
| <b>Kitchen</b><br>4.882m x 2.977m<br>16'0" x 9'9"     | <b>En-Suite 1</b><br>1.857m x 2.002m<br>6'1" x 6'7"          |
| <b>Breakfast</b><br>4.032m x 2.977m<br>13'3" x 9'9"   | <b>Bedroom 2</b><br>3.391m x 3.643m<br>11'2" x 11'11"        |
| <b>WC</b><br>1.673m x 0.924m<br>5'6" x 3'0"           | <b>En-Suite 2</b><br>1.648m max x 2.055m max<br>5'5" x 6'9"  |
| <b>Laundry</b><br>1.673m x 1.960m<br>5'6" x 6'5"      | <b>Bedroom 3</b><br>3.201m x 3.053m<br>10'6" x 10'0"         |

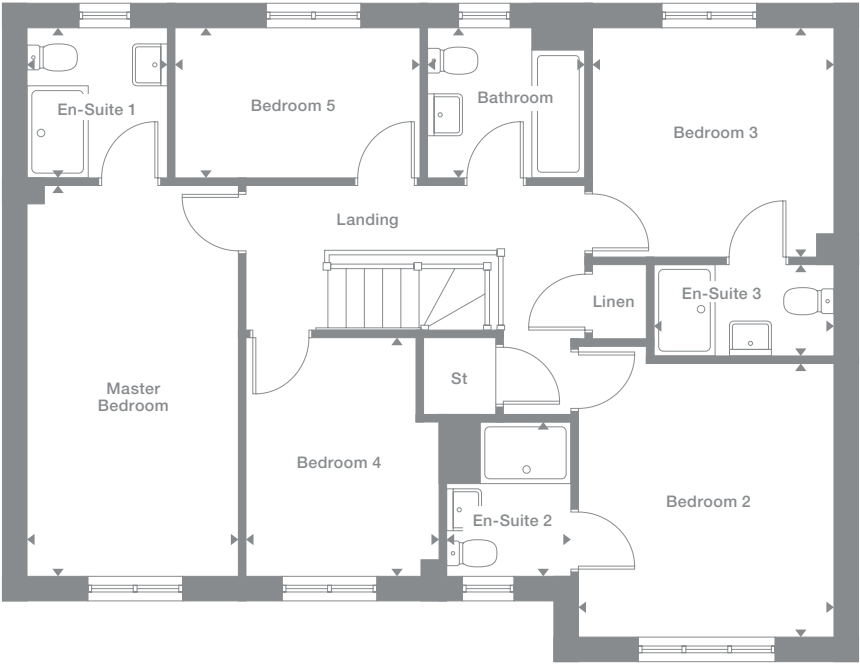
|  |                                   |
|--|-----------------------------------|
| <b>Plots</b><br>39*, 58,<br>60*, 76,<br>122*, 126,<br>127*, 129,<br>144* | <b>Floor Space</b><br>1,502 sq ft |
|--|-----------------------------------|



Ground Floor



First Floor



Photography represents typical Miller Homes' interiors and exteriors. All plans in this brochure are not drawn to scale and are for illustrative purposes only. Consequently, they do not form part of any contract. Room layouts are provisional and may be subject to alteration. Please refer to the 'Important Notice' section at the back of this brochure for more information.

\* Plots are a mirror image of plans shown above

# Jura

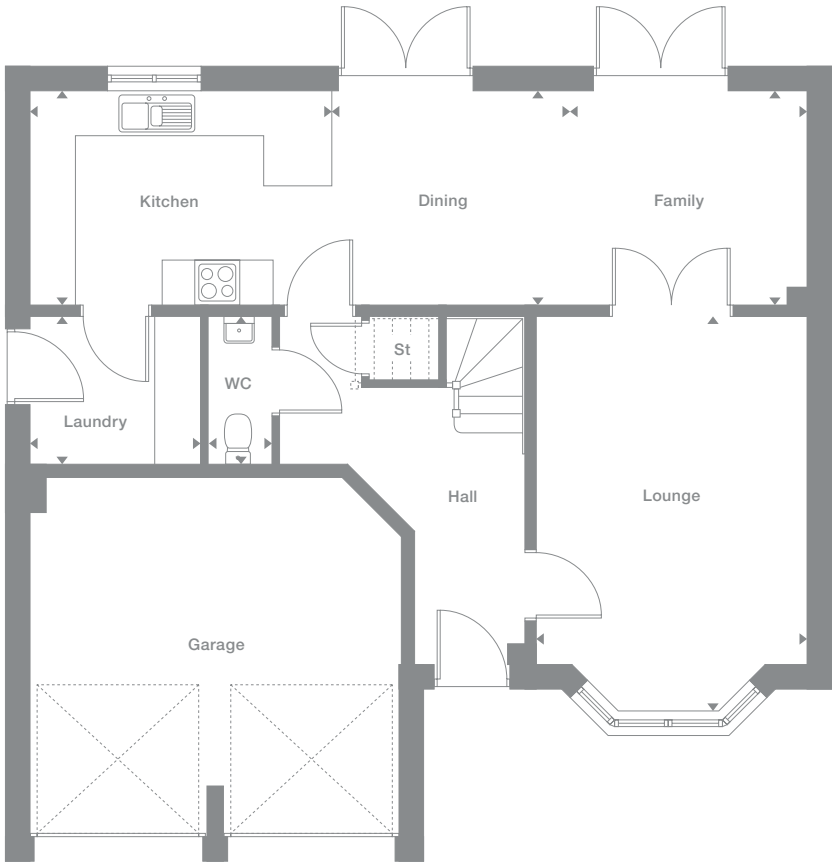
**Overview**  
Arranged around a striking L-shaped hall and superb gallery landing, the exceptionally spacious Jura includes a wealth of premium features. A breathtaking family and dining space complements the superbly-equipped kitchen, and two of the five bedrooms are en-suite.

|   |   |
|---|---|
| <b>Ground Floor</b>                                   | <b>First Floor</b>  |
| <b>Lounge</b><br>3.580m x 5.192m max<br>11'9" x 17'0" | <b>Master Bedroom</b><br>4.895m max x 4.277m max<br>16'1" x 14'0" |
| <b>Dining</b><br>3.149m x 2.850m<br>10'4" x 9'4"      | <b>En-Suite 1</b><br>2.177m x 1.978m<br>7'2" x 6'6"               |
| <b>Kitchen</b><br>3.982m x 2.850m<br>13'1" x 9'4"     | <b>Bedroom 2</b><br>3.064m x 3.576m<br>10'1" x 11'9"              |
| <b>Family</b><br>3.141m x 2.850m<br>10'4" x 9'4"      | <b>En-Suite 2</b><br>2.015m max x 1.860m max<br>6'7" x 6'1"       |
| <b>WC</b><br>0.850m x 1.955m<br>2'9" x 6'5"           | <b>Bedroom 3</b><br>3.713m x 2.911m<br>12'2" x 9'7"               |
| <b>Laundry</b><br>2.252m x 1.955m<br>7'5" x 6'5"      | <b>Bedroom 4</b><br>3.284m x 2.911m max<br>10'9" x 9'7"           |
|   | <b>Bedroom 5</b><br>3.639m max x 2.633m max<br>11'11" x 8'8"      |
|   | <b>Bathroom</b><br>2.603m max x 1.870m<br>8'6" x 6'2"             |

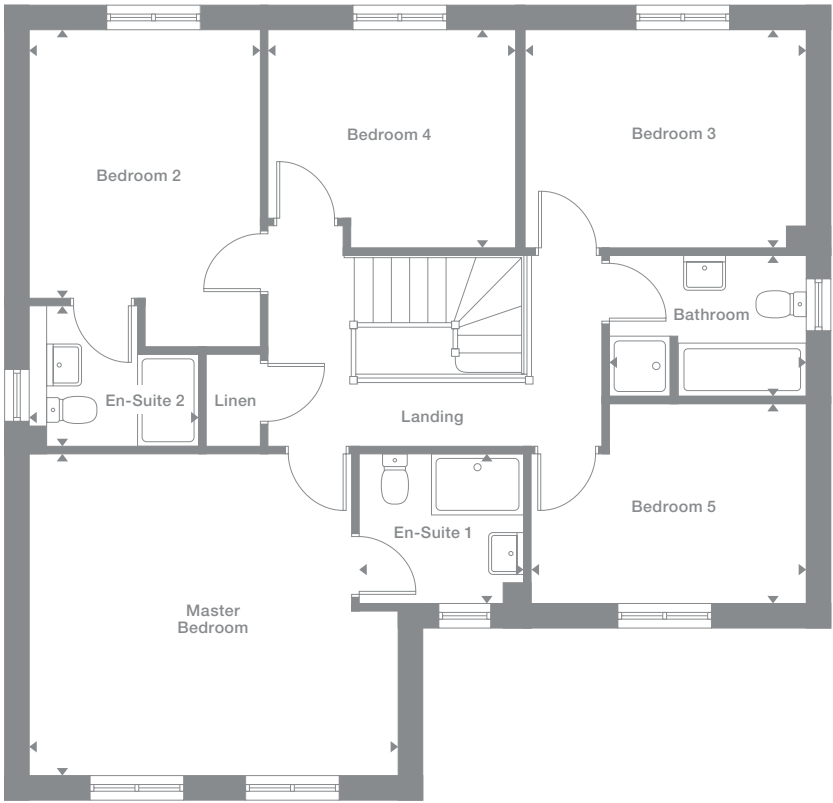
|   |                    |
|---|--------------------|
| <b>Plots</b>                            | <b>Floor Space</b> |
| 2, 52*,<br>55*, 61,<br>62*, 102,<br>121 | 1,671 sq ft        |



Ground Floor



First Floor



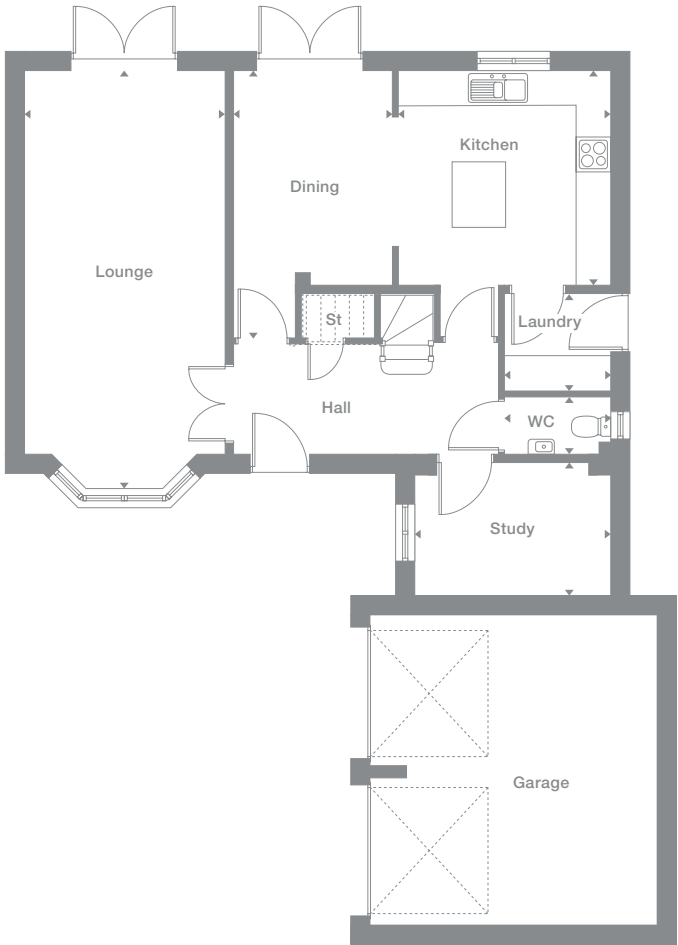
Photography represents typical Miller Homes' interiors and exteriors. All plans in this brochure are not drawn to scale and are for illustrative purposes only. Consequently, they do not form part of any contract. Room layouts are provisional and may be subject to alteration. Please refer to the 'Important Notice' section at the back of this brochure for more information.

\* Plots are a mirror image of plans shown above



**Overview**  
An exciting succession of impressive features, from the stylishly divided kitchen and dining room through to the luxurious en-suite master bedroom with its separate dressing area, emphasise the outstanding quality of this superior home.

Ground Floor



**Ground Floor**

- Lounge**  
3.400m x 7.108m max  
11'2" x 23'4"
- Dining**  
2.700m x 3.640m  
8'10" x 11'11"
- Kitchen**  
3.607m x 3.640m  
11'10" x 11'11"
- WC**  
1.815m x 0.989m  
5'11" x 3'3"
- Laundry**  
1.815m x 1.643m  
5'11" x 5'5"
- Study**  
3.328m x 2.245m  
10'11" x 7'4"

**First Floor**

- Master Bedroom**  
4.901m max x 4.706m max  
16'1" x 15'5"
- En-Suite 1**  
2.603m max x 2.438m max  
8'6" x 8'0"
- Dressing**  
4.901m x 1.760m max  
16'1" x 5'9"
- Bedroom 2**  
2.900m x 3.697m  
9'6" x 12'2"
- En-Suite 2**  
1.700m max x 2.313m max  
5'7" x 7'7"
- Bedroom 3**  
3.400m x 3.215m  
11'2" x 10'7"
- Bedroom 4**  
3.400m x 3.207m  
11'2" x 10'6"
- Bedroom 5**  
3.433m x 2.689m max  
11'3" x 8'10"
- Bathroom**  
1.700m x 2.306m  
5'7" x 7'7"

**Plots**

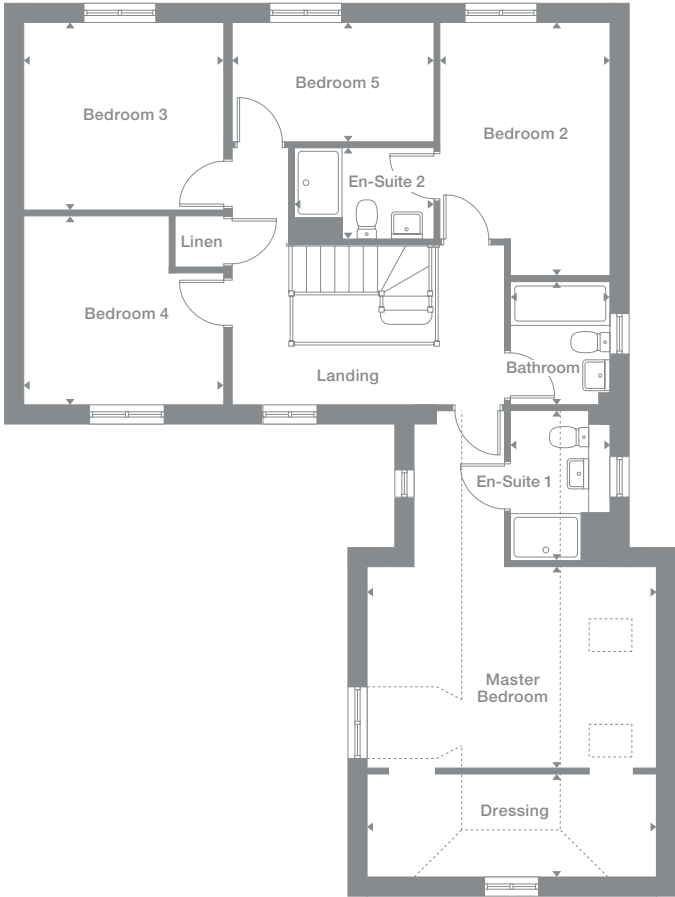
- 1, 4,  
38, 51\*,  
56, 57\*,  
101, 125\*,  
139\*, 145\*

**Floor Space**

1,868 sq ft



First Floor



Photography represents typical Miller Homes' interiors and exteriors. All plans in this brochure are not drawn to scale and are for illustrative purposes only. Consequently, they do not form part of any contract. Room layouts are provisional and may be subject to alteration. Please refer to the 'Important Notice' section at the back of this brochure for more information.

\* Plots are a mirror image of plans shown above

 Velux rooflight

# The Miller Difference

“Buying a property is one of the most important decisions in life and I am delighted that Miller Homes made it an easy one for me.”

Chris Mackenzie  
Miller Home Owner

“We are so impressed with the exceptional customer service and quality of our home that we’ve recommended Miller Homes to a friend.”

Helen Moscrop  
Miller Home Owner

### The Miller Difference

We’re enormously proud of the homes we’ve been building for the last 80 years, and throughout that time we’ve been listening to our customers and learning from them. From insisting on the best workmanship and the highest quality materials right through to recognising our responsibilities to the environment.

During this time we’ve seen many generations of families enjoy our homes and developments, and we’ve seen the happy, thriving communities they’ve become.

### Trust

For us, the most important people are the customers who choose our homes in which to build their future. Their satisfaction and confidence in us, from our very first meeting onwards, is a key measure of our success.

We’re proud of the independent surveys that consistently show our high levels of customer satisfaction. That’s the real barometer of our quality and our service.

### Helping where we can

We invest everything into your customer journey – it’s designed not just to please you, but to exceed your expectations.

When you become a Miller customer, we’ll listen to you right from the start. From the day you first look around a showhome until long after you’ve moved in, we’re here to offer help and support. We’ve been doing this a long time so we have a vast amount of experience to draw on.

We don’t want you to just be satisfied, we want you to be proud of your new home and delighted by the whole experience. We want you to recommend us, too.

### Pushing up standards

We frequently win awards for the quality of our homes. For their generous specification, skilful construction, beautiful locations, and for the teams that build them. We are acknowledged experts in the field. You can see the quality of our product and you will notice the quality of our service as we guide you through the many different ways of buying your home. It’s a customer journey that has taken 80 years to perfect.

We know the importance of workmanship and job satisfaction. We look after our teams, we train and employ the best people and we reward safe and careful practice.

### Keeping you involved

First you’ll meet your Development Sales Manager who will give you any help you need in choosing and buying your home. Then your site manager, who will supervise the build of your home and answer your questions along the way.

We’ll invite you to a pre-plaster meeting with your site manager during the construction of your new home, where you’ll get to see, first hand, the attention to detail, care and craftsmanship involved.

Wherever practical, we ask you to choose your own kitchen and bathroom including your own tiles, worktops, appliances and other options. Your home becomes personal to you long before we’ve finished building it.

### A Better Place

We don’t just create more homes, we enhance locations with our developments. Places where people will make friends, enjoy family life and take pride in their neighbourhoods and surroundings. We even provide a unique [www.mymillerhome.com](http://www.mymillerhome.com) website to keep you up to date on the build progress of your home and to help you get to know the area, your neighbours and live more sustainably once you’ve moved in.

### For your future

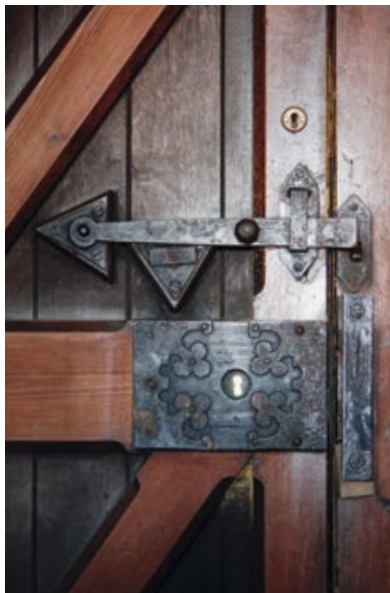
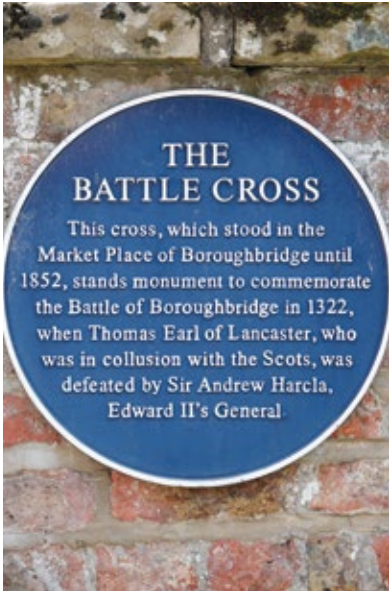
For us, success is building exceptional homes, in sustainable communities. And that’s how we’ve built a business that goes from strength to strength.





The area offers endless scope for exploration. Walkways along the River Ure complement country footpaths and village lanes, and Aldborough village, a fifteen minute walk away and the site of some superb Roman mosaics, is home to the celebrated Northern Aldborough Festival, one of the country's foremost classical music celebrations. Many of the Festival events take place within Boroughbridge. Other local events include an Easter Walking Festival and the Aldborough and Boroughbridge Show each July, which attracts visitors from throughout Yorkshire.

The superb wetland nature reserve at Stavely is just three miles away, and the town sits between Nidderdale Area of Natural Beauty and the Yorkshire Dales to the west, and the North Yorkshire Moors to the east, both around ten miles away and both amongst England's finest wild spaces. Boroughbridge Sports Association organises cricket, football and tennis activities and, as well as berthing assorted pleasure craft, Boroughbridge Marina offers boat hire for days out.

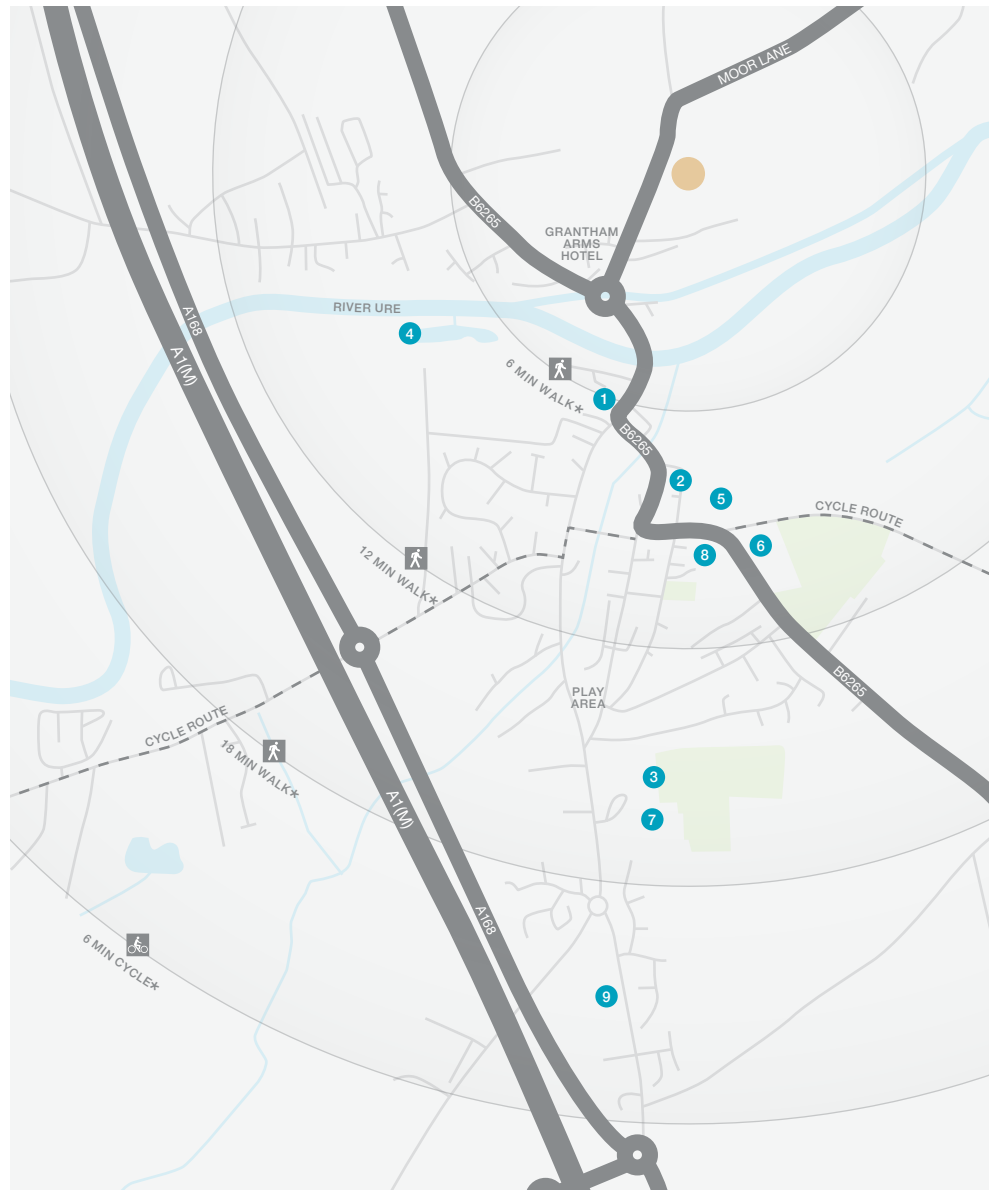




When you leave the car at home and explore the local area by foot or bicycle, you get to know it so much better. And by using local shops and services, you'll help to keep the neighbourhood vibrant and prosperous. Every place has its own personality, and once you move in you'll soon find your favourite walks, and the shops you like best. As a starting point this map shows some of the most useful features and services within a short stroll or bike ride.

Boroughbridge Primary School, assessed as 'good' by Ofsted, is located in open surroundings on the edge of the town, and there is a second primary school in Kirby Hill. Boroughbridge High School, which has specialist status in art, also incorporates Boroughbridge

Leisure Centre, with a suite of fitness facilities for community use. Medical provision includes a large GP practice based in Church Lane Surgery and a dental practice near the Morrisons supermarket. There is also an optician in the town centre.



- 1 Boroughbridge Post Office, Horsefair 01423 322 560
  - 2 Boroughbridge Pharmacy, 26 High Street 01423 322 448
  - 3 Boroughbridge Leisure Centre, Wetherby Road 01423 323 505
  - 4 Boroughbridge Marina, Marina Lane 01423 323 400
  - 5 Boroughbridge Sports Association, Aldborough Road 01423 324 206
  - 6 Boroughbridge Primary School, York Road 01423 322 208
  - 7 Boroughbridge High School, Wetherby Road 01423 323 540
  - 8 Church Lane Surgery Church Lane 01423 322 309
  - 9 Boroughbridge Dental Centre, Wetherby Road 01423 322 757
- Kirby Hill Primary School, Church Lane 01423 322 713

\* Times stated are averages based on approximate distances and would be dependent on the route taken.

Based on:  
0.5km = 5 to 7 mins walk  
1.0km = 10 to 14 mins walk  
1.5km = 15 to 21 mins walk  
2.0km = 5 to 8 mins cycle





# How to find us

Development  
Opening Times:  
Thursday - Monday  
10.30am - 5.30pm  
0800 840 8610

**From the A1(M)**  
Leave the A1(M)  
at junction 48  
and follow signs  
for Boroughbridge  
via the A6055. Carry  
straight on along  
Wetherby Road and  
Horsefair to cross  
the River Ure, then  
take the second  
roundabout exit  
to pass to the right  
of the Grantham  
Arms Hotel. Milby  
Grange is on the  
right, 300 yards on.

**From Harrogate**  
Follow the A59  
into Knaresborough,  
then at the Bond  
End junction join  
the A6055 for  
Boroughbridge.  
Stay on the A6055  
through the junction  
with the A1(M), and  
carry straight on  
along Wetherby  
Road and Horsefair  
to cross the River  
Ure. Take the second  
roundabout exit to  
pass to the right of  
the Grantham Arms  
Hotel, and Milby  
Grange is on the  
right, 300 yards on.

Sat Nav: YO51 9BL



The homes we build  
are the foundations  
of sustainable  
communities that  
will flourish for  
generations to come.  
We work in harmony  
with the natural  
environment,  
protecting and  
preserving it wherever  
we can. With our  
customers, colleagues  
and partners, we  
strive to promote  
better practices and  
ways of living. We're  
playing our part in  
making the world  
A Better Place.

a better place®



**Important Notice:**  
Although every care has been taken to ensure the accuracy of all the information given, the contents do not form part of any contract, or constitute a representation or warranty, and, as such, should be treated as a guide only. Interested parties should check with the Development Sales Manager and confirm all details with their solicitor. The developer reserves the right to amend the specification, as necessary, without prior notice, but to an equal or higher standard. Please note that items specified in literature and showhomes may depict appliances, fittings and decorative finishes that do not form part of the standard specification. The project is a new development which is currently under construction. Measurements provided have not been surveyed on-site. The measurements have been taken from architect's plans, and, as such, may be subject to variation during the course of construction. Not all the units described have been completed at the time of going to print and measurements and dimensions should be checked with the Development Sales Manager and confirmed with solicitors.

**CONSUMER  
CODE FOR  
HOME BUILDERS**  
[www.consumercode.co.uk](http://www.consumercode.co.uk)

the place to be®

## Why Miller Homes?

We've been building homes since 1934, that's three generations of experience. We've learned a lot about people and that's made a big difference to what we do and how we do it.

We're enormously proud of the homes we build, combining traditional craftsmanship with new ideas like low carbon technologies. The big difference is that we don't stop caring once we've finished the building, or when we've sold the house, or even once you've moved in. We're there when you need us, until you're settled, satisfied and inviting your friends round.

This brochure is printed on GaleriArt and contains material sourced from responsibly managed forests. It's certified by the Forest Stewardship Council, an organisation dedicated to promoting responsible forest management and manufacture of wood products. Like paper. It's a small thing, we know, but enough small things make a big difference. Please recycle this brochure and help make that difference.

[millerhomes.co.uk](http://millerhomes.co.uk)

**millerhomes**

*the place to be®*