

TITAN WORKS

Halifax



YOUR SPACE

We know that choosing a new home is one of the biggest decisions you'll ever make, that's why we're committed to making your home buying experience as smooth as possible.

We're a Yorkshire based developer so we know the areas people want to live and with this in mind, we build high quality homes across the Yorkshire region. Whatever your current situation, we're committed to helping you choose a home that is perfect for you and advising you on how best to buy.





YOUR PLACE

Step onto the property ladder with Shared Ownership at our exclusive development Titan Works, featuring a collection of 3 bedroom homes located within the popular town of Halifax.

Living at Titan Works, you'll have a great selection of local amenities right on your doorstep from supermarkets to local schools including Moorside Community School with a good Ofsted rating.



LOCATION & TRANSPORT

Close by is Halifax's charming town centre, home to some of the region's best-preserved Georgian and Victorian landmarks such as the magnificent Piece Hall. This landmark is filled with shops, restaurants and frequent events and outdoor entertainment. Take advantage of having the award-winning Grade II listed Victorian market hall close by, a thriving market filled with local butchers, fruit and veg stalls.

There is also plenty to do for the family in Halifax, with the famous Eureka! The National Children's Museum featuring hundreds of interactive and hands-on exhibits. The eight hectare Manor Heath Park, awarded a coveted Green Flag award, offers a woodland walk, park trail and children's play area.

Halifax is well connected to nearby towns and cities. Leeds is just a 30 minute train ride and offers even more entertainment, shopping and days out.



STEPPING STONES
DAY NURSERY

BEAR'S HOUSE
DAY NURSERY

TITAN WORKS
HX3 6JQ

AKROYDON
PRIMARY ACADEMY

BOOTH TOWN
NEWSAGENTS

BOOTH TOWN
POST OFFICE

SUPER SUDS
LAUNDERETTE

BANKFIELD
MUSEUM

AKROYD
PARK

WOODSIDE
SURGERY

SHELL

STONEACRE
CAR DEALERSHIP

THE
PROSPECT

BELGRAVE
SOCIAL CLUB

TRAVELODGE

DEAN
CLOUGH
MILLS

TOTSPOT
DAY NURSERY

LIDL

ST JOSEPH'S
CATHOLIC
PRIMARY
SCHOOL



YOUR CHOICE

Make a home at Titan Works your space by personalising the things that matter to you. We are proud of the homes we build and we know it's the little things that make a home feel like yours. Once you've reserved your home, you will be invited back into the Marketing Suite for your Options meeting. This is the exciting bit. It's here you can discuss all the ways you can personalise your home with your sales consultant.

Our plots at Titan Works are exclusively available under the Shared Ownership scheme. For more information on the scheme, speak with one of our sales consultants.



SPECIFICATION

External specification

- External lights
- White UPVC Windows
- Black Composite Windermere Style Front Door
- Front Garden Turf. Please refer to layout for landscaping details.

Internal features

- White Vertical 5 panel door
- A choice of kitchen styles and worktops from the ranges provided.* Please speak with one of our sales consultants for further information.
- Kitchen appliances comprising of double oven, ceramic hob and extractor.
- A choice of bathroom tiles in bathrooms.*
- Heated towel rail in bathrooms.
- Shower screen and shower over bath in bathroom.

For more information on a specific plots features and upgrades, please speak with one of our sales consultants.

*Choices are subject to build stage, please speak to our sales consultant for plot specific details.

STONESDALE

A three bedroom home



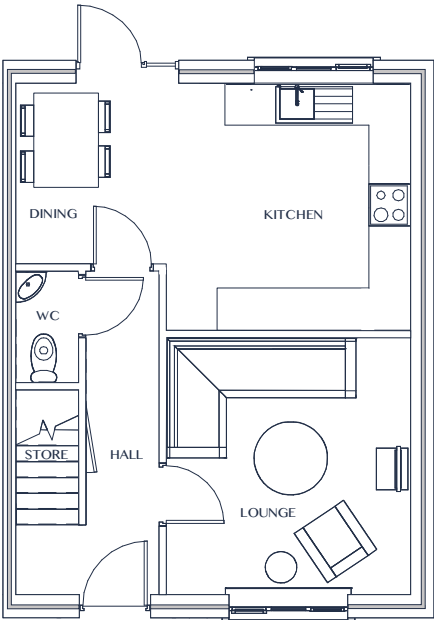
STONSDALE

A three bedroom home:

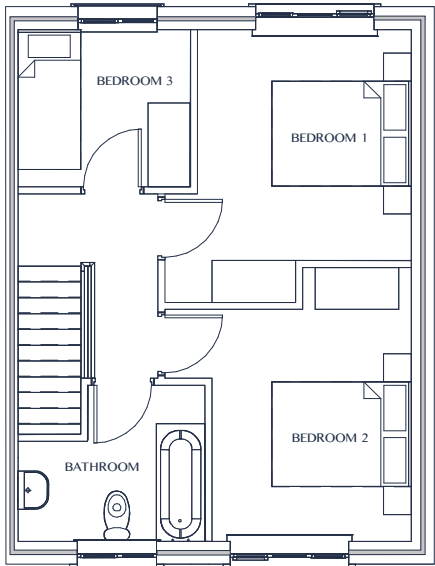
- Open plan kitchen diner
- Oven, hob and extractor fan
- Rear enclosed garden

Available on plot:

3, 4, 7, 19, 20, 21, 22, 23, 24, 25, 26, 29, 30, 31,
32, 33, 37, 38.



Ground floor



First floor

Ground floor

Kitchen diner	5.6m x 2.97m	18'4" x 9'8"
Lounge	3.47m x 4.3m	11'4" x 14'3"
WC	0.93m x 1.8m	3' x 5'10"

First floor

Bedroom 1	3.5m x 3.97m	11'5" x 13'
Bedroom 2	3.5m x 3.9m	11'5" x 12'9"
Bedroom 3	2.5m x 2.39m	8'2" x 7'10"
Bathroom	2.7m x 2.3m	8'10" x 7'6"

SPACE HOMES

TITAN WORKS, CLAREMONT ROAD, HALIFAX, HX3 6JQ

0345 366 4407

TITAN.WORKS@SPACEHOMES.CO.UK

Details correct at time of distribution. Property Misdescriptions Act 1991: Images are used for representative uses only. The particulars contained in this brochure have been produced in good faith, are set out as a general guide and do not constitute the whole or part of any contract. All liability or negligence, arising from the use of these particulars hereby excluded. Floorplans: Whilst every attempt has been made to ensure the accuracy of the floor plans contained here, measurements of doors, windows, and rooms are approximate and no responsibility is taken for any error, omission or misstatement.

**CONSUMER
CODE FOR
HOME BUILDERS**

www.consumercode.co.uk