

# SPRING WOOD PARK

A new home. The start of a whole new chapter for you and your family. And for us, the part of our job where bricks and mortar becomes a place filled with activity and dreams and fun and love. We put a huge amount of care into the houses we build, but the story's not finished until we match them up with the right people. So, once you've chosen a Miller home, we'll do everything we can to make the rest of the process easy, even enjoyable. From the moment you make your decision until you've settled happily in, we'll be there to help.







Just seven miles from the centre of Leeds, the picturesque village of Bramhope is highly sought after for its very special blend of wide horizons, welcoming community, and excellent local amenities. This beautifully landscaped selection of prestigious two, three, four and five bedroom homes, sheltered by mature woodlands and just yards from the A660, presents a unique opportunity to enjoy a rural pace of life in a remarkably convenient location. Three distinct character areas will bring added choice and style to the development with a wonderful range of house styles and finishes.

Welcome to Spring Wood Park...

#### Character Areas

##### **The Pines**

The Pines area courses through the heart of Spring Wood Park. The homes in this character area emulate the traditional stone finish and slate roof homes familiar across rural Yorkshire.

##### **The Willows**

The homes in The Willows character area will have a warm brick finish and stone effect window sills to the front elevation. Selected properties will also have a splayed bay window with a lead effect roof, all to add an air of simple elegance.

##### **The Sycamores**

The Sycamores character area wraps around the outer perimeter of the development. The homes here will have a predominantly white render finish, complemented by feature stone below plinth level.







Just ten minutes' stroll from the village centre, Spring Wood Park has a peaceful ambience that contrasts with its convenience. The A660 brings the centre of Leeds within 20 minutes' drive, and bus services between Leeds and Ilkley stop beside the development. The area has a network of foot and cycle paths, while for travel further afield Spring Wood Park is just four miles from Leeds Bradford International Airport.

Shops and services within a few yards of the development include a convenience store, a family butcher, an off-licence specialising in fine wines, an independent coffee shop and a delicatessen. The village has a pharmacy, a bakery, a newsagent, a gift shop, food takeaways, hairdressers, and a historic pub and restaurant, the Fox and Hounds. There are also two farm shops within walking distance, and a wider choice, including a large Co-op with post office facilities, can be found in Adel, just two miles away.



Much of community life focuses on the Village Hall, which hosts a diversity of activities and events for all ages, from playgroups to art classes, yoga, theatre, and the annual Village Show. The hall is flanked by tennis and bowling clubs, both of which welcome new members, and there is a cricket club at the west end of the village and a rugby club just a few yards from Spring Wood Park. The well-equipped playground in the village is set in a delightful wooded park.





Plot Information



BCP Bin Collection Point Shed

Yare page 12	
Hawthorne	
Stretton page 14	
Twain	
Tolkien page 16	
Larkin page 18	
Malory page 20	
Greene	
Esk page 22	
Hallam page 24	
Buchan page 26	
Travers page 28	
Repton page 30	
Mitford page 32	
Wessex page 34	
Westwood page 36	
Stevenson page 38	
Ryton page 40	
Springwood page 42	
Eastwood page 44	
Buttermere page 46	
Thames page 48	
Jura page 50	
Deakin page 52	
Leader page 54	
Affordable Homes	

The artist's impressions (computer-generated graphics) have been prepared for illustrative purposes and are indicative only. They do not form part of any contract, or constitute a representation or warranty. External appearance may be subject to variation upon completion of the project. Please note that the site plan is not drawn to scale.



**Yare  
The Willows**

Also available in  
The Sycamores.

Adding a contemporary, open appeal, the design of living room and adjoining kitchen and dining room allows the whole ground floor to benefit from front facing windows and french doors, filling both rooms with natural light. A beautifully integrated staircase enhances the sense of space.

**Living**  
2.95m x 4.02m  
9'8" x 13'2"

**Kitchen/Dining**  
4.39m x 2.83m  
14'5" x 9'4"

**WC**  
1.34m x 1.41m  
4'5" x 4'8"

**Principal Bedroom**  
4.39m x 3.26m  
14'5" x 10'9"

**Bedroom 2**  
1.98m x 3.58m  
6'6" x 11'9"

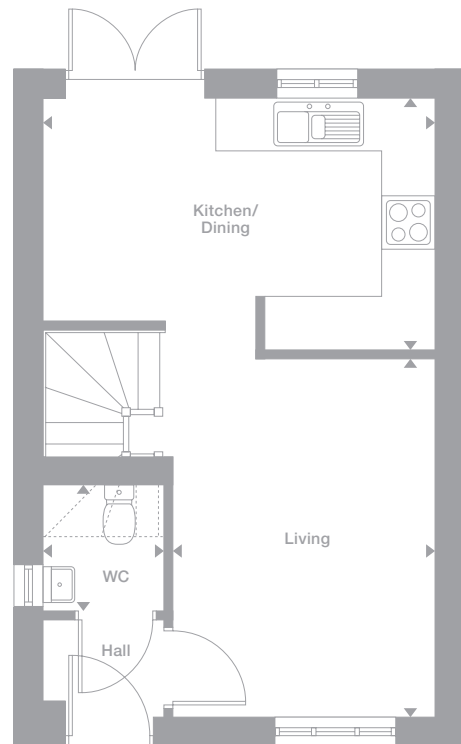
**Bathroom**  
2.31m x 1.70m  
7'7" x 5'7"

**Floor Space**  
657 sq ft

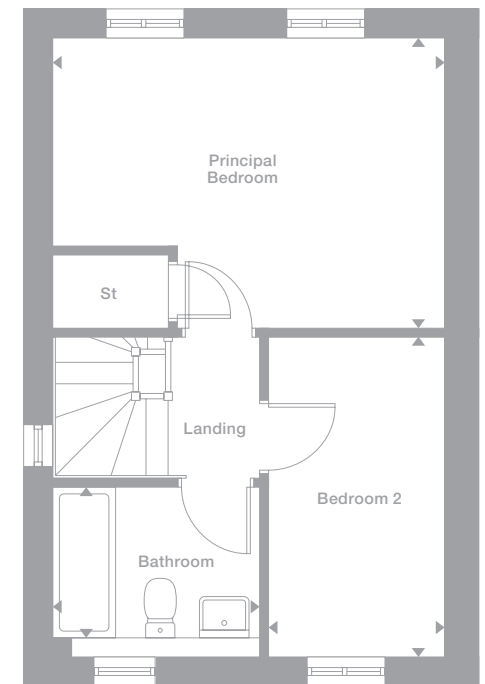
Photography represents typical Miller Homes' interiors and exteriors. All plans in this brochure are not drawn to scale and are for illustrative purposes only. Consequently, they do not form part of any contract. Room layouts are provisional and may be subject to alteration. Please refer to the 'Important Notice' section at the back of this brochure for more information.



Ground Floor



First Floor



Some plots may be a mirror image of the floor plans. Please see Development Sales Manager for details



**Stretton  
The Willows**

Also available in  
The Sycamores.

A bright lounge adjoins the stylish, ergonomic kitchen and dining area incorporating french doors, a natural family focal point. The en-suite principal bedroom features built-in storage, and bedroom three could become a home office.

**Lounge**  
3.56m x 4.49m  
11'8" x 14'9"

**Kitchen/Dining**  
3.34m x 3.83m  
11'0" x 12'7"

**Laundry**  
1.08m x 1.96m  
3'7" x 6'5"

**WC**  
1.08m x 1.78m  
3'7" x 5'10"

**Principal Bedroom**  
2.81m x 3.26m  
9'3" x 10'9"

**En-Suite**  
1.60m x 2.03m  
5'3" x 6'8"

**Bedroom 2**  
2.31m x 3.06m  
7'7" x 10'1"

**Bedroom 3**  
2.11m x 2.02m  
6'11" x 6'8"

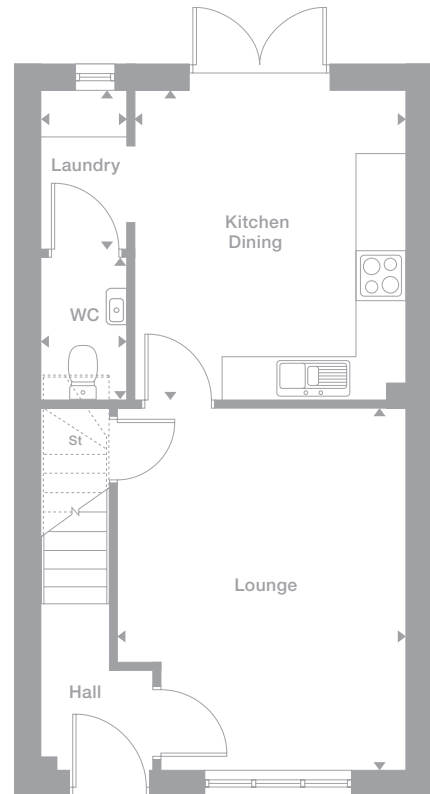
**Bathroom**  
2.31m x 1.90m  
7'7" x 6'3"

**Floor Space**  
819 sq ft

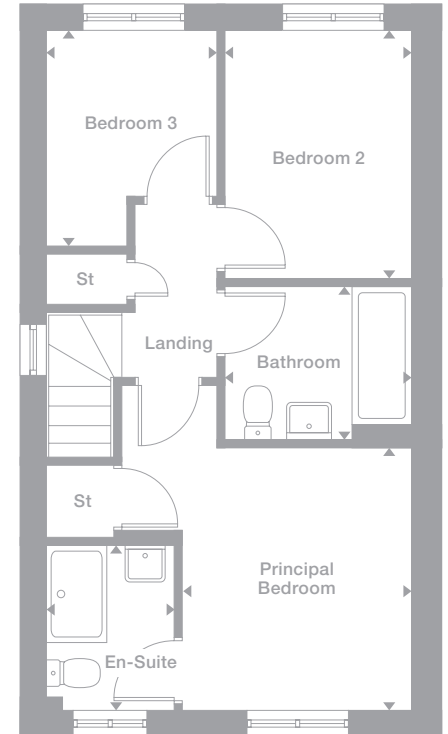
Photography represents typical Miller Homes' interiors and exteriors. All plans in this brochure are not drawn to scale and are for illustrative purposes only. Consequently, they do not form part of any contract. Room layouts are provisional and may be subject to alteration. Please refer to the 'Important Notice' section at the back of this brochure for more information.



Ground Floor



First Floor



Some plots may be a mirror image of the floor plans. Please see Development Sales Manager for details



**Tolkien  
The Pines**

Also available in  
The Sycamores.

The lounge opens on to a welcoming, practical kitchen and dining room in which french doors add a light, airy ambience. The second bedroom features cupboard space, and the dual aspect en-suite principal bedroom has a private staircase and a dormer window.

**Lounge**  
3.19m x 4.27m  
10'6" x 14'0"

**Dining**  
1.81m x 2.53m  
5'11" x 8'4"

**Kitchen**  
2.32m x 3.06m  
7'7" x 10'1"

**WC**  
0.85m x 1.63m  
2'10" x 5'4"

**Bedroom 2**  
4.14m x 2.60m  
13'7" x 8'6"

**Bedroom 3**  
2.13m x 2.73m  
7'0" x 9'0"

**Bathroom**  
2.13m x 1.91m  
7'0" x 6'3"

**Principal Bedroom**  
3.19m x 2.86m  
to 1.185 H.L.  
10'6" x 9'5"

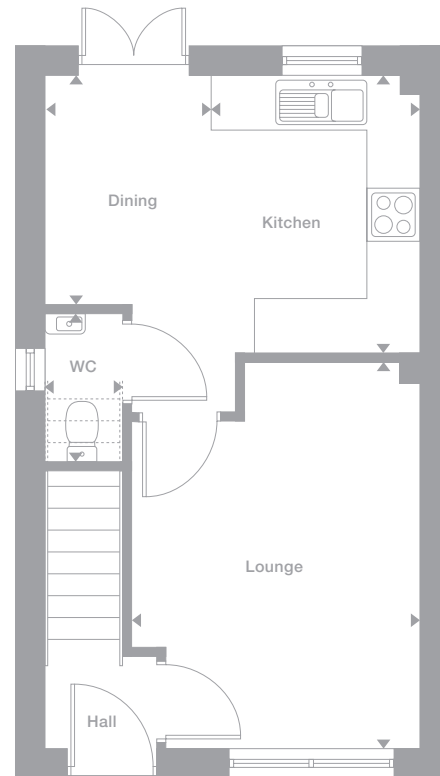
**En-Suite**  
2.18m x 1.82m  
to 1.323 H.L.  
7'2" x 6'0"

**Floor Space**  
886 sq ft

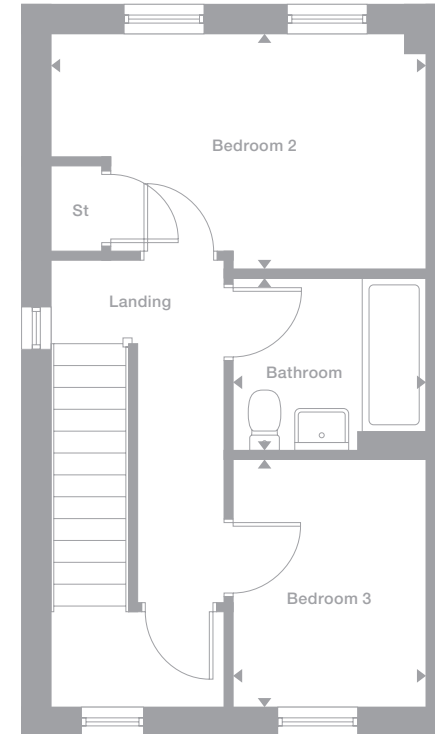
Photography represents typical Miller Homes' interiors and exteriors. All plans in this brochure are not drawn to scale and are for illustrative purposes only. Consequently, they do not form part of any contract. Room layouts are provisional and may be subject to alteration. Please refer to the 'Important Notice' section at the back of this brochure for more information.



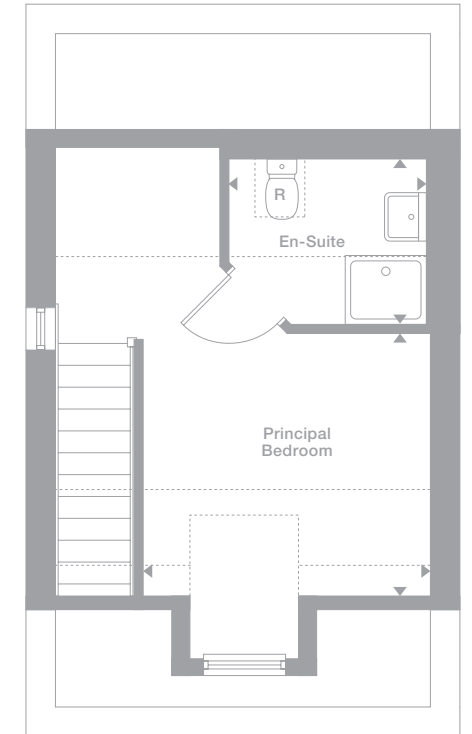
Ground Floor



First Floor



Second Floor



R = Rooflight

Some plots may be a mirror image of the floor plans. Please see Development Sales Manager for details



**Larkin  
The Pines**

Also available in  
The Sycamores.

The lounge leads into a superb kitchen incorporating a conservatory-like area with french doors, creating a wonderful setting for relaxed, leisurely dining. There is a practical laundry room, bedroom two has a useful cupboard, and the principal bedroom includes en-suite facilities and a dressing area.

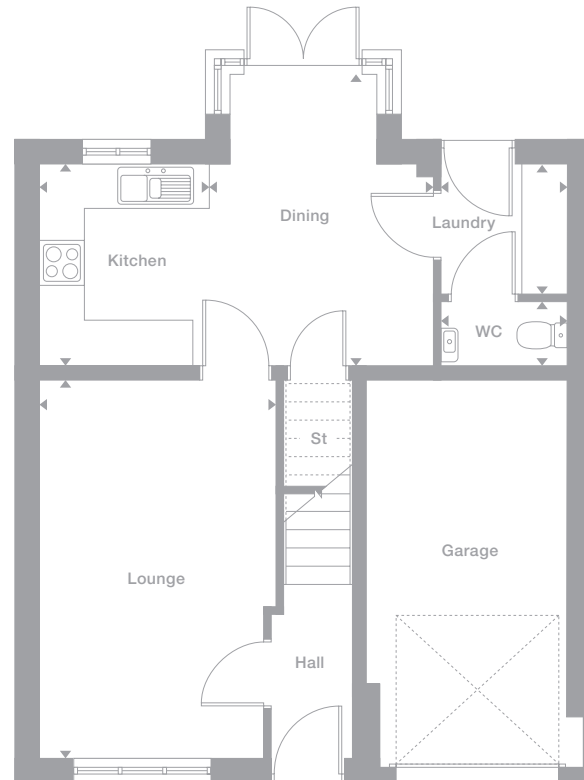
<b>Lounge</b> 3.14m x 5.00m 10'4" x 16'5"	<b>Principal Bedroom</b> 3.75m x 3.41m 12'4" x 11'2"
<b>Dining</b> 2.97m x 3.80m 9'9" x 12'6"	<b>En-Suite</b> 1.69m x 2.11m 5'7" x 6'11"
<b>Kitchen</b> 2.25m x 2.68m 7'5" x 8'10"	<b>Dressing</b> 1.70m x 1.23m 5'7" x 4'1"
<b>Laundry</b> 1.67m x 1.74m 5'6" x 5'9"	<b>Bedroom 2</b> 3.14m x 3.44m 10'4" x 11'4"
<b>WC</b> 1.67m x 0.85m 5'6" x 2'9"	<b>Bedroom 3</b> 2.41m x 3.40m 7'11" x 11'2"
	<b>Bathroom</b> 2.65m x 1.70m 8'9" x 5'7"

**Floor Space**  
980 sq ft

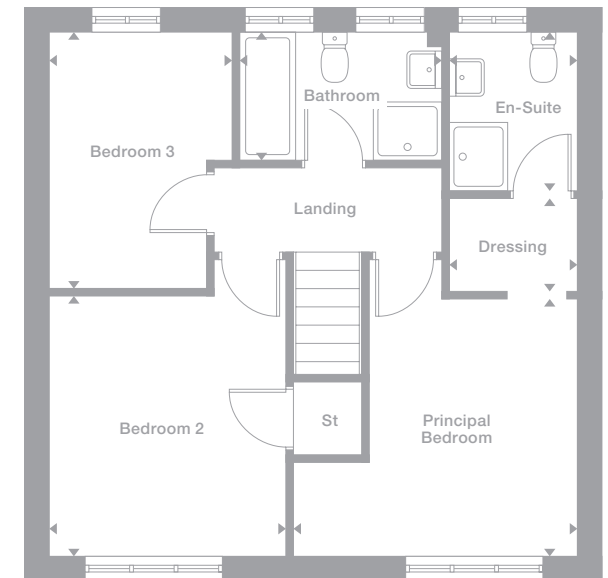
Photography represents typical Miller Homes' interiors and exteriors. All plans in this brochure are not drawn to scale and are for illustrative purposes only. Consequently, they do not form part of any contract. Room layouts are provisional and may be subject to alteration. Please refer to the 'Important Notice' section at the back of this brochure for more information.



Ground Floor



First Floor



Some plots may be a mirror image of the floor plans. Please see Development Sales Manager for details



**Malory**  
**The Sycamores**

Also available in  
The Pines.

The welcoming lounge, with its stylish bay window, shares the ground floor with a bright kitchen and dining room where french doors add the flexibility to opt for barbecues or coffee on the patio. The principal bedroom features an en-suite.

**Lounge**  
3.85m x 5.25m  
12'8" x 17'3"

**Dining**  
1.95m x 3.69m  
6'5" x 12'1"

**Kitchen**  
1.84m x 3.69m  
6'1" x 12'1"

**WC**  
2.00m x 1.09m  
6'7" x 3'7"

**Principal Bedroom**  
3.85m x 4.35m  
12'8" x 14'4"

**En-Suite**  
2.45m x 1.21m  
8'1" x 4'0"

**Bedroom 2**  
3.38m x 3.74m  
11'1" x 12'3"

**Bedroom 3**  
3.47m x 3.54m  
11'5" x 11'7"

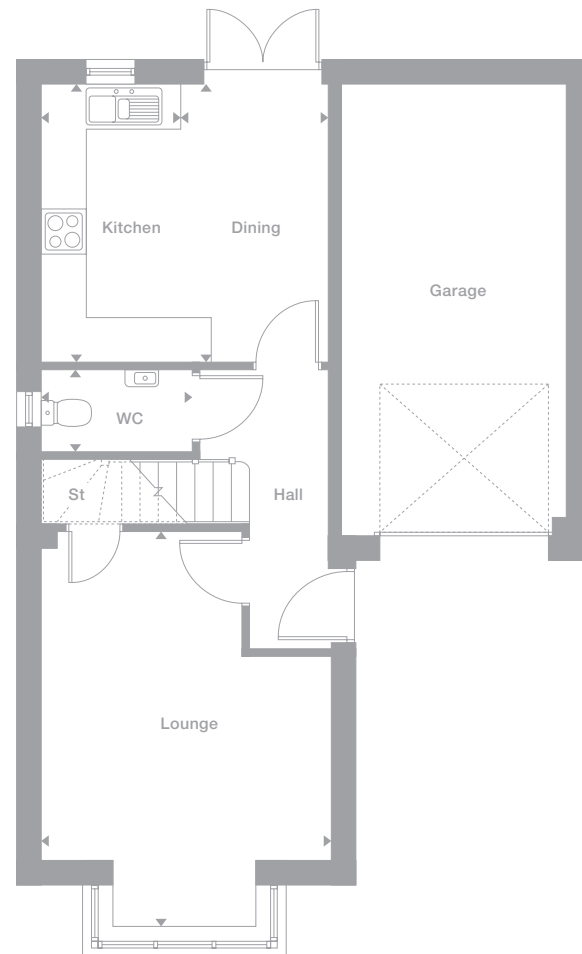
**Bathroom**  
2.80m x 2.15m  
9'2" x 7'1"

**Floor Space**  
1,068 sq ft

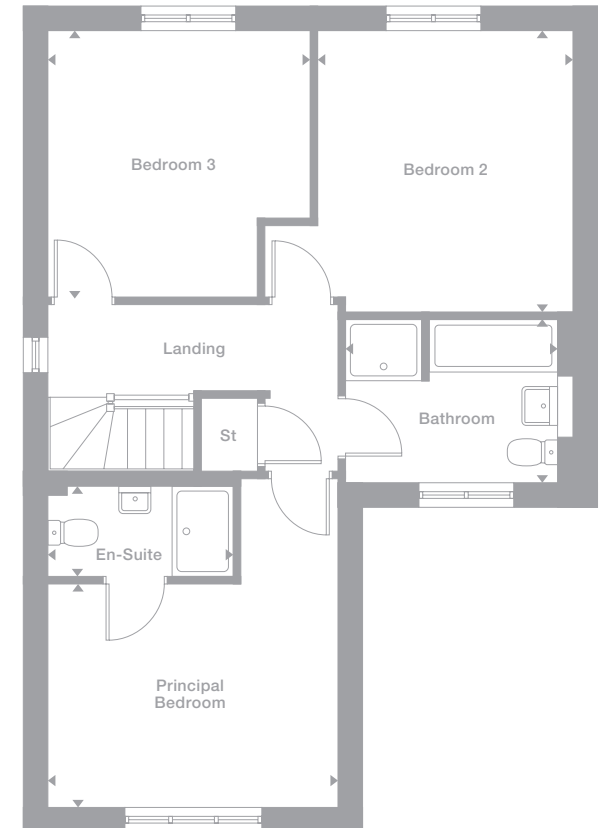
Photography represents typical Miller Homes' interiors and exteriors. All plans in this brochure are not drawn to scale and are for illustrative purposes only. Consequently, they do not form part of any contract. Room layouts are provisional and may be subject to alteration. Please refer to the 'Important Notice' section at the back of this brochure for more information.



**Ground Floor**



**First Floor**



Some plots may be a mirror image of the floor plans. Please see Development Sales Manager for details



**Esk  
The Pines**

Also available in  
The Sycamores  
and The Willows.

An inviting hallway opens on to an elegant, bay-windowed lounge and a bright kitchen where french doors add an attractive focal point to the dining area. The principal bedroom is en-suite, and with four bedrooms there is the option of creating a useful home office.

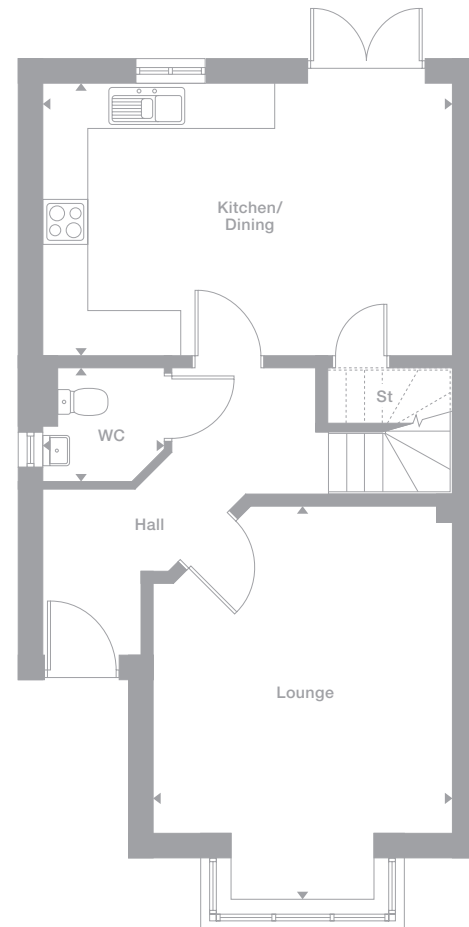
<b>Lounge</b> 3.96m x 5.23m 13'0" x 17'2"	<b>Principal Bedroom</b> 3.96m x 2.67m 13'0" x 8'9"
<b>Kitchen/Dining</b> 5.42m x 3.61m 17'10" x 11'10"	<b>En-Suite</b> 1.79m x 1.61m 5'11" x 5'4"
<b>WC</b> 1.61m x 1.51m 5'4" x 4'11"	<b>Bedroom 2</b> 3.55m x 2.64m 11'8" x 8'8"
	<b>Bedroom 3</b> 1.78m x 3.67m 5'10" x 12'1"
	<b>Bedroom 4</b> 2.51m x 2.56m 8'3" x 8'5"
	<b>Bathroom</b> 2.51m x 2.17m 8'3" x 7'1"

**Floor Space**  
1,105 sq ft  
(other styles vary)

Photography represents typical Miller Homes' interiors and exteriors. All plans in this brochure are not drawn to scale and are for illustrative purposes only. Consequently, they do not form part of any contract. Room layouts are provisional and may be subject to alteration. Please refer to the 'Important Notice' section at the back of this brochure for more information.

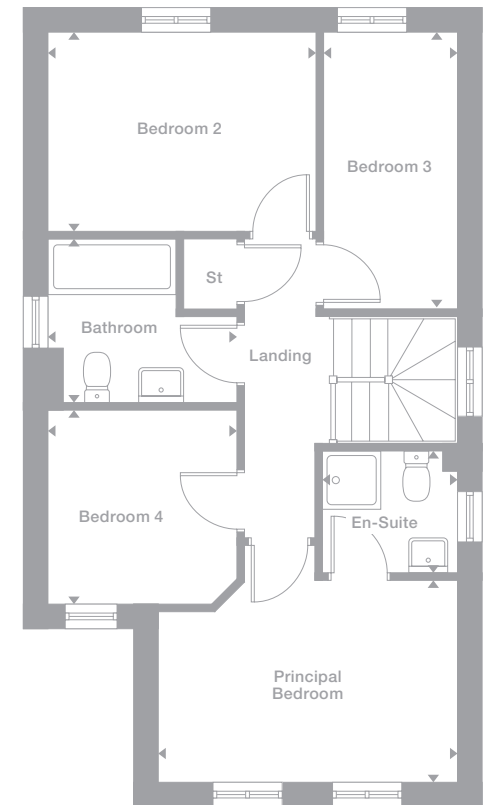


**Ground Floor**



Some plots may have splayed bay windows instead of square bay windows. Please see Development Sales Manager for details

**First Floor**



Some plots may be a mirror image of the floor plans. Please see Development Sales Manager for details

Please note: Attached garage positioning may vary. Speak with Development Sales Manager

**Hallam  
The Sycamores**

Also available in  
The Pines.

With french doors enhancing the lounge and a charming bay-windowed dining room, this is an impressive backdrop for entertaining as well as an immensely comfortable family home. There is a laundry room and a bright gallery landing leading to four bedrooms, one of them en-suite.

**Lounge**  
3.98m x 4.58m  
13'1" x 15'1"

**Dining**  
2.62m x 4.50m  
8'7" x 14'9"

**Kitchen**  
2.80m x 3.14m  
9'2" x 10'4"

**Laundry**  
1.65m x 1.64m  
5'5" x 5'5"

**WC**  
1.46m x 1.00m  
4'9" x 3'4"

**Principal Bedroom**  
3.40m x 3.66m  
11'2" x 12'0"

**En-Suite**  
2.40m x 2.01m  
7'11" x 6'7"

**Bedroom 2**  
3.39m x 2.76m  
11'1" x 9'1"

**Bedroom 3**  
3.42m x 2.82m  
11'3" x 9'3"

**Bedroom 4**  
3.44m x 1.75m  
11'4" x 5'9"

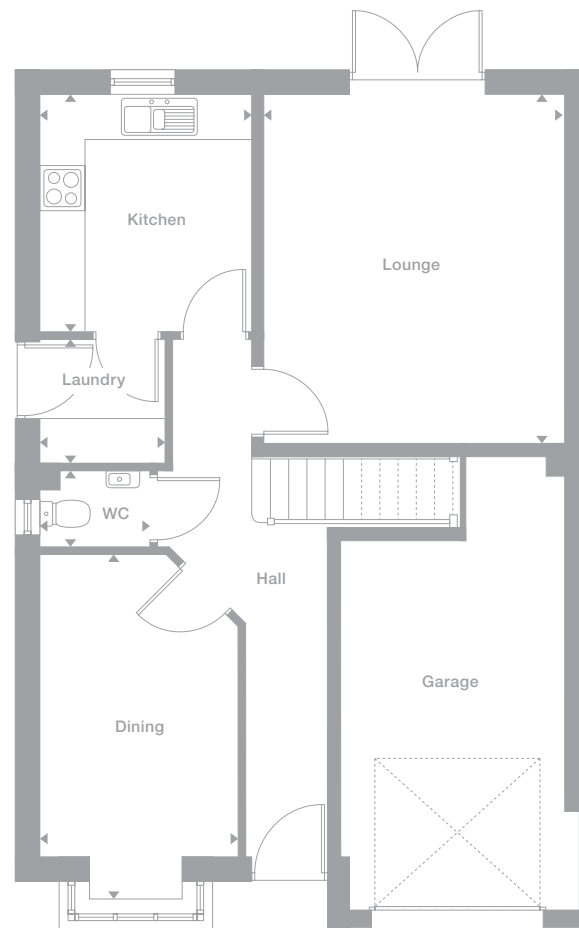
**Bathroom**  
1.88m x 1.88m  
6'2" x 6'2"

**Floor Space**  
1,220 sq ft

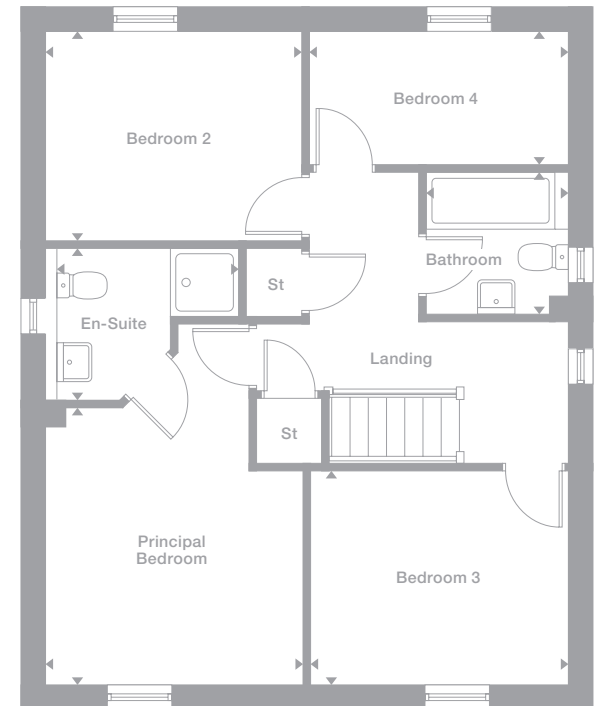
Photography represents typical Miller Homes' interiors and exteriors. All plans in this brochure are not drawn to scale and are for illustrative purposes only. Consequently, they do not form part of any contract. Room layouts are provisional and may be subject to alteration. Please refer to the 'Important Notice' section at the back of this brochure for more information.



**Ground Floor**



**First Floor**



Some plots may be a mirror image of the floor plans. Please see Development Sales Manager for details



**Buchan  
The Pines**

Also available in  
The Sycamores  
and The Willows.

With dual aspect windows in the kitchen and dining room, and french doors in the lounge, this is a bright, airy home. And, with a separate laundry, a study and a superb en-suite principal bedroom, it is also exceptionally practical.

**Lounge**  
3.45m x 4.79m  
11'4" x 15'9"

**Dining**  
2.76m x 3.32m  
9'1" x 10'11"

**Kitchen**  
2.76m x 3.63m  
9'1" x 11'11"

**Laundry**  
1.93m x 1.79m  
6'4" x 5'11"

**WC**  
1.93m x 0.95m  
6'4" x 3'1"

**Study**  
2.32m x 2.06m  
7'7" x 6'9"

**Principal Bedroom**  
3.50m x 3.74m  
11'6" x 12'3"

**En-Suite**  
2.23m x 2.04m  
7'4" x 6'8"

**Bedroom 2**  
2.75m x 3.76m  
9'0" x 12'4"

**Bedroom 3**  
2.51m x 3.09m  
8'3" x 10'2"

**Bedroom 4**  
2.45m x 3.11m  
8'0" x 10'3"

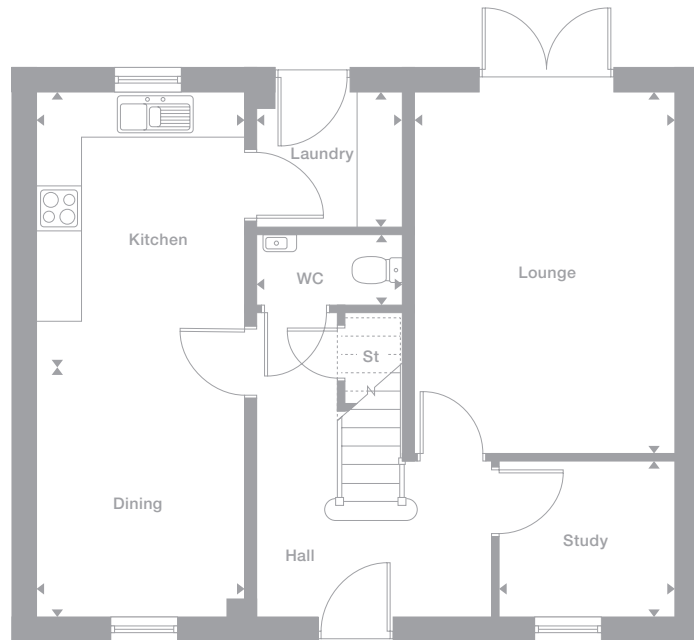
**Bathroom**  
3.05m x 1.70m  
10'0" x 5'7"

**Floor Space**  
1,264 sq ft

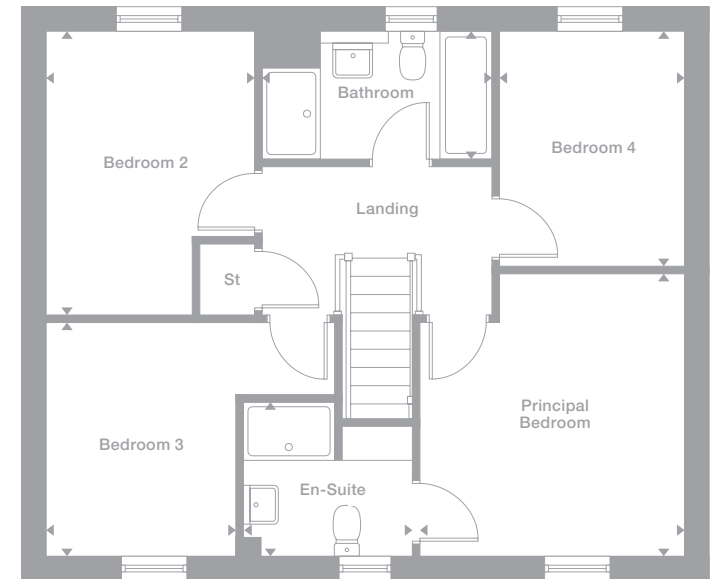
Photography represents typical Miller Homes' interiors and exteriors. All plans in this brochure are not drawn to scale and are for illustrative purposes only. Consequently, they do not form part of any contract. Room layouts are provisional and may be subject to alteration. Please refer to the 'Important Notice' section at the back of this brochure for more information.



Ground Floor



First Floor



Some plots may be a mirror image of the floor plans. Please see Development Sales Manager for details

**Travers**  
**The Sycamores**

Also available in  
The Pines.

The bay window and sheltered courtyard entrance introduce a substantial family home. A separate laundry room leaves the kitchen and dining room free for relaxed cooking and conversation, and an en-suite shower room adds a note of luxury to one of the four bedrooms upstairs.

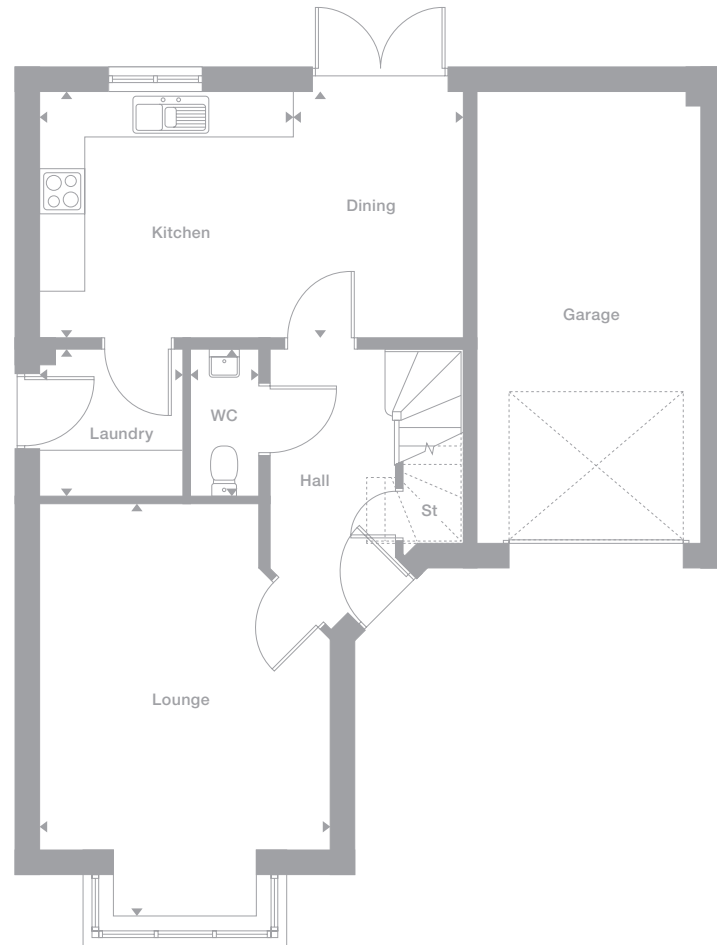
<b>Lounge</b> 3.85m x 5.48m 12'8" x 18'0"	<b>Principal Bedroom</b> 3.05m x 4.36m 10'0" x 14'4"
<b>Dining</b> 2.25m x 3.26m 7'5" x 10'9"	<b>En-Suite</b> 2.46m x 1.52m 8'1" x 5'0"
<b>Kitchen</b> 3.35m x 3.26m 11'0" x 10'9"	<b>Bedroom 2</b> 3.85m x 3.44m 12'8" x 11'4"
<b>Laundry</b> 1.90m x 1.95m 6'3" x 6'5"	<b>Bedroom 3</b> 3.10m x 4.06m 10'2" x 13'4"
<b>WC</b> 0.90m x 1.95m 3'0" x 6'5"	<b>Bedroom 4</b> 2.78m x 2.27m 9'2" x 7'6"
	<b>Bathroom</b> 2.32m x 2.70m 8'10" x 7'8"

**Floor Space**  
1,288 sq ft

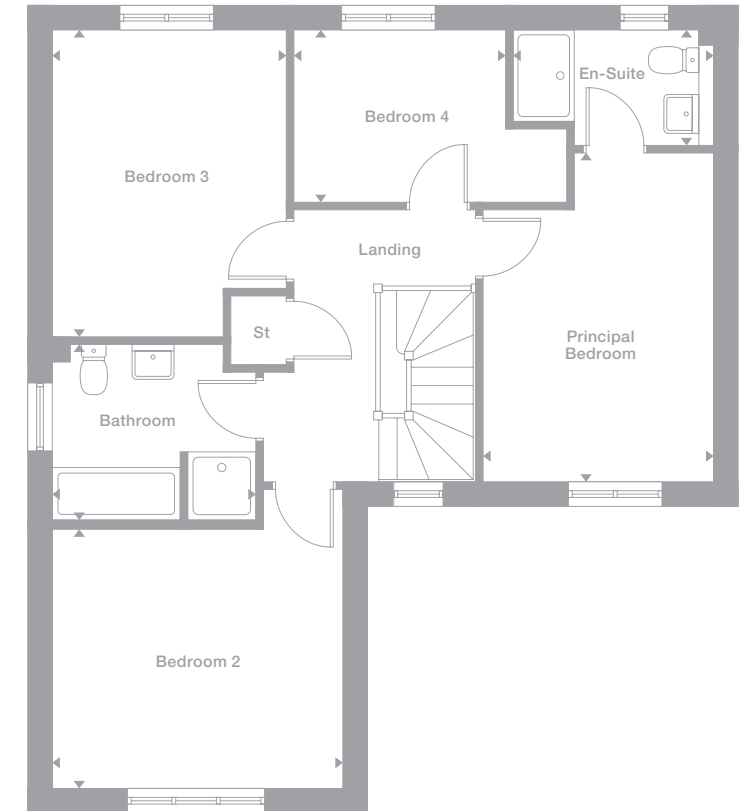
Photography represents typical Miller Homes' interiors and exteriors. All plans in this brochure are not drawn to scale and are for illustrative purposes only. Consequently, they do not form part of any contract. Room layouts are provisional and may be subject to alteration. Please refer to the 'Important Notice' section at the back of this brochure for more information.



**Ground Floor**



**First Floor**



Some plots may be a mirror image of the floor plans. Please see Development Sales Manager for details



**Repton  
The Willows**

Also available in  
The Sycamores  
and The Pines.

The dual aspect outlooks in all three ground floor rooms include a bay window in the dining room and french doors in both the lounge and kitchen.

The second bedroom of this inspiring, light-filled family home is also dual aspect, and the principal bedroom is en-suite.

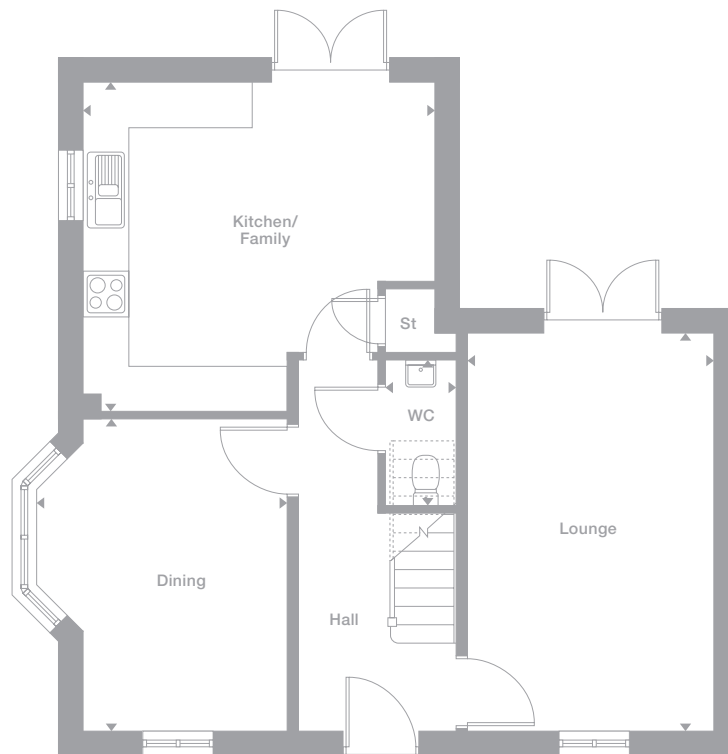
<b>Lounge</b> 3.26m x 5.27m 10'9" x 17'4"	<b>Principal Bedroom</b> 4.64m x 2.71m 15'3" x 8'11"
<b>Dining</b> 3.28m x 4.13m 10'9" x 13'7"	<b>En-Suite</b> 2.47m x 1.24m 8'1" x 4'1"
<b>Kitchen/Family</b> 4.64m x 4.35m 15'3" x 14'4"	<b>Bedroom 2</b> 4.75m x 2.64m 15'7" x 8'8"
<b>WC</b> 0.93m x 1.93m 3'1" x 6'4"	<b>Bedroom 3</b> 3.49m x 2.88m 11'6" x 9'6"
	<b>Bedroom 4</b> 2.33m x 2.29m 7'8" x 7'6"
	<b>Bathroom</b> 2.69m x 1.70m 8'10" x 5'7"

**Floor Space**  
1,290 sq ft  
(other styles vary)

Photography represents typical Miller Homes' interiors and exteriors. All plans in this brochure are not drawn to scale and are for illustrative purposes only. Consequently, they do not form part of any contract. Room layouts are provisional and may be subject to alteration. Please refer to the 'Important Notice' section at the back of this brochure for more information.

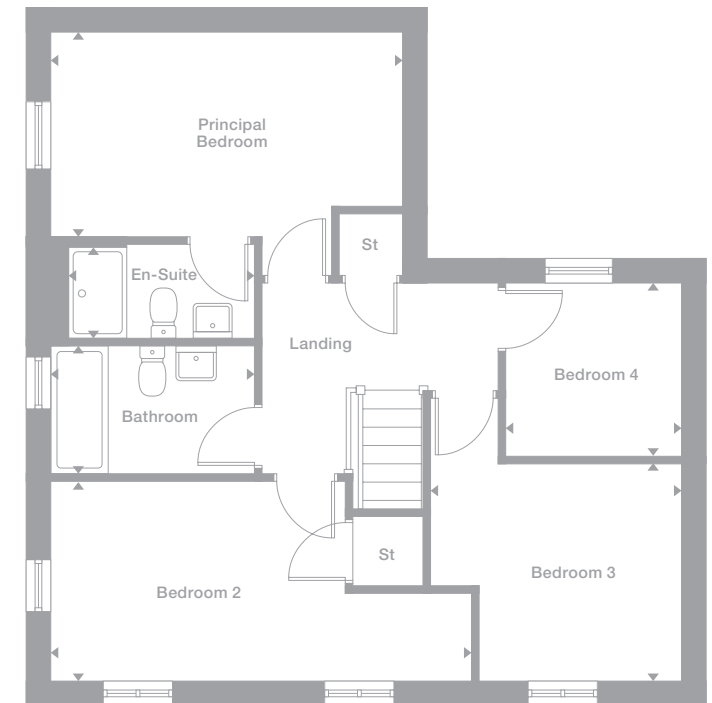


**Ground Floor**



Some plots may have square bay windows instead of splayed bay windows. Please see Development Sales Manager for details

**First Floor**



Some plots may be a mirror image of the floor plans. Please see Development Sales Manager for details

**Mitford  
The Pines**

Also available in  
The Sycamores  
and The Willows.

The dual aspect kitchen and dining room, with its french doors and separate laundry, presents a convivial family social space that complements the stylish bay-windowed lounge. A study provides a quiet space for working from home, and the en-suite principal bedroom includes attractive twin windows.

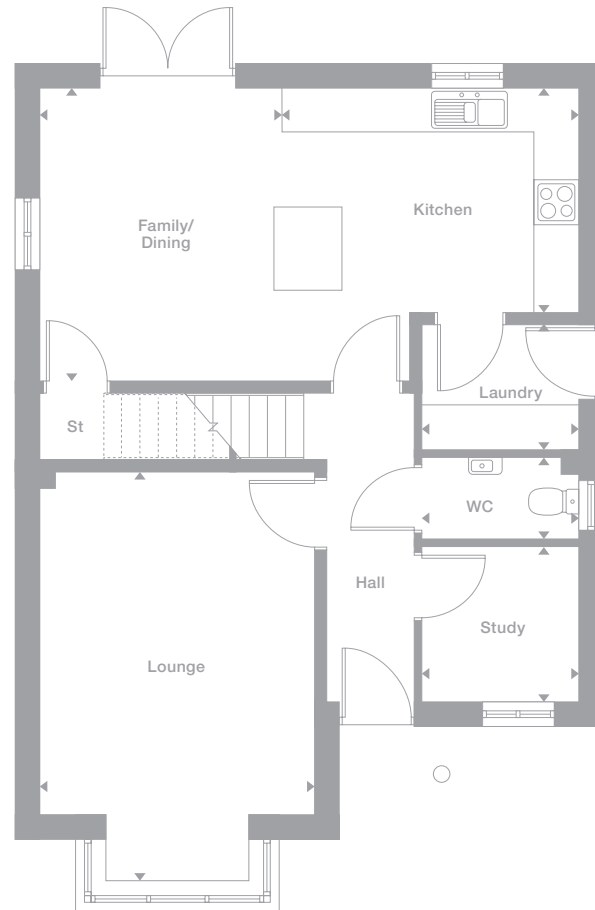
<b>Lounge</b> 3.65m x 5.44m 12'0" x 17'10"	<b>Principal Bedroom</b> 3.65m x 4.60m 12'0" x 15'1"
<b>Family/Dining</b> 3.22m x 3.88m 10'7" x 12'9"	<b>En-Suite</b> 2.00m x 2.00m 6'7" x 6'7"
<b>Kitchen</b> 3.92m x 2.99m 12'10" x 9'10"	<b>Bedroom 2</b> 3.79m x 2.75m 12'5" x 9'1"
<b>Laundry</b> 2.08m x 1.66m 6'10" x 5'5"	<b>Bedroom 3</b> 3.26m x 2.74m 10'8" x 9'0"
<b>WC</b> 2.08m x 1.08m 6'10" x 3'7"	<b>Bedroom 4</b> 3.40m x 3.18m 11'2" x 10'5"
<b>Study</b> 2.08m x 2.06m 6'10" x 6'9"	<b>Bathroom</b> 2.55m x 2.00m 8'5" x 6'7"

**Floor Space**  
1,388 sq ft  
(other styles vary)

Photography represents typical Miller Homes' interiors and exteriors. All plans in this brochure are not drawn to scale and are for illustrative purposes only. Consequently, they do not form part of any contract. Room layouts are provisional and may be subject to alteration. Please refer to the 'Important Notice' section at the back of this brochure for more information.

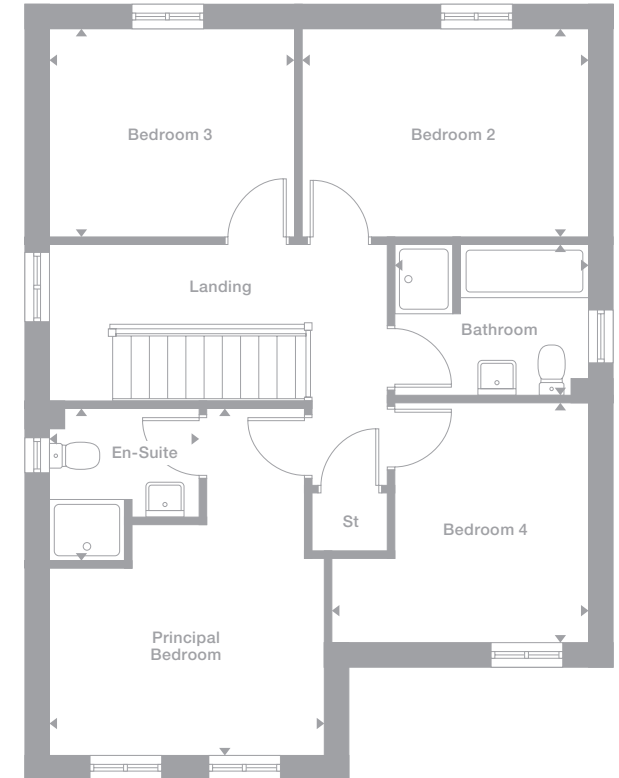


**Ground Floor**



Some plots may have splayed bay windows instead of square bay windows. Please see Development Sales Manager for details

**First Floor**



Some plots may be a mirror image of the floor plans. Please see Development Sales Manager for details



**Wessex  
The Pines**

Sharing the ground floor with a private study, the exciting, open-plan family kitchen and dining room incorporates french doors opening to the garden. The lounge features french windows with a decorative balcony, and two bedrooms are en-suite, creating a home of immense comfort and flexibility.

**Kitchen/Family**  
5.33m x 5.38m  
17'4" x 17'6"

**WC**  
0.91m x 1.65m  
3'0" x 5'5"

**Study**  
2.60m x 3.23m  
8'7" x 10'7"

**Lounge**  
3.49m x 5.38m  
11'5" x 17'8"

**Principal Bedroom**  
3.46m x 4.46m  
11'4" x 14'8"

**En-Suite 1**  
1.56m x 1.82m  
5'2" x 6'0"

**Bedroom 2**  
3.48m x 3.86m  
11'5" x 12'8"

**En-Suite 2**  
1.65m x 1.79m  
5'5" x 5'11"

**Bedroom 3**  
2.92m x 3.12m  
9'7" x 10'3"

**Bedroom 4**  
2.16m x 3.14m  
7'1" x 10'4"

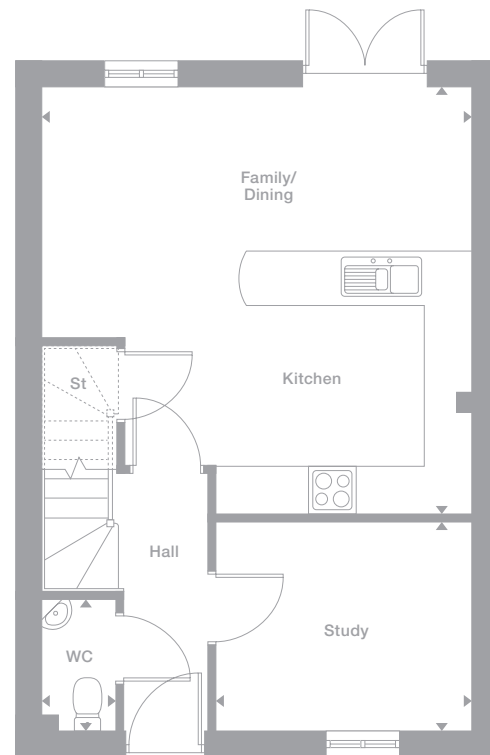
**Bathroom**  
1.71m x 1.97m  
5'7" x 6'6"

**Floor Space**  
1,391 sq ft

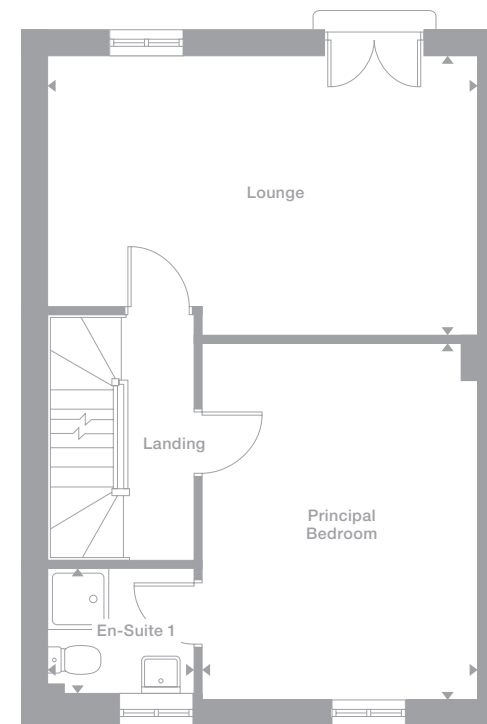
Photography represents typical Miller Homes' interiors and exteriors. All plans in this brochure are not drawn to scale and are for illustrative purposes only. Consequently, they do not form part of any contract. Room layouts are provisional and may be subject to alteration. Please refer to the 'Important Notice' section at the back of this brochure for more information.



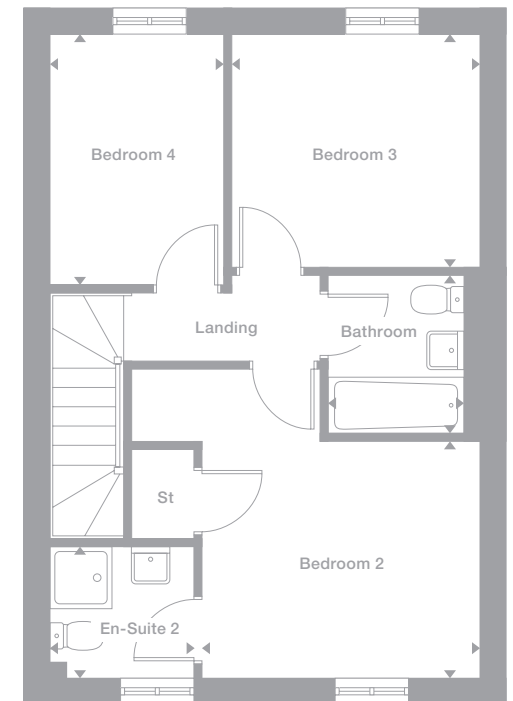
Ground Floor



First Floor



Second Floor



Some plots may be a mirror image of the floor plans. Please see Development Sales Manager for details

**Westwood  
The Pines**

In addition to a superb, open-plan family kitchen and dining room with stylish french doors, the ground floor includes a WC and a useful study. Upstairs, the airy lounge features a juliet balcony and two of the four bedrooms are en-suite, complementing the family bathroom.

**Family/Dining**  
5.38m x 3.09m  
17'8" x 10'2"

**Kitchen**  
3.23m x 3.26m  
10'7" x 10'9"

**WC**  
0.87m x 1.62m  
2'10" x 5'4"

**Study**  
3.23m x 2.57m  
10'7" x 8'5"

**Lounge**  
3.49m x 5.34m  
11'5" x 17'7"

**Principal Bedroom**  
3.46m x 4.42m  
11'4" x 14'6"

**En-Suite 1**  
1.79m x 1.53m  
5'11" x 5'0"

**Bedroom 2**  
3.48m x 3.86m  
11'5" x 12'8"

**En-Suite 2**  
1.79m x 1.61m  
5'11" x 5'4"

**Bedroom 3**  
3.12m x 2.92m  
10'3" x 9'7"

**Bedroom 4**  
2.13m x 3.11m  
7'0" x 10'3"

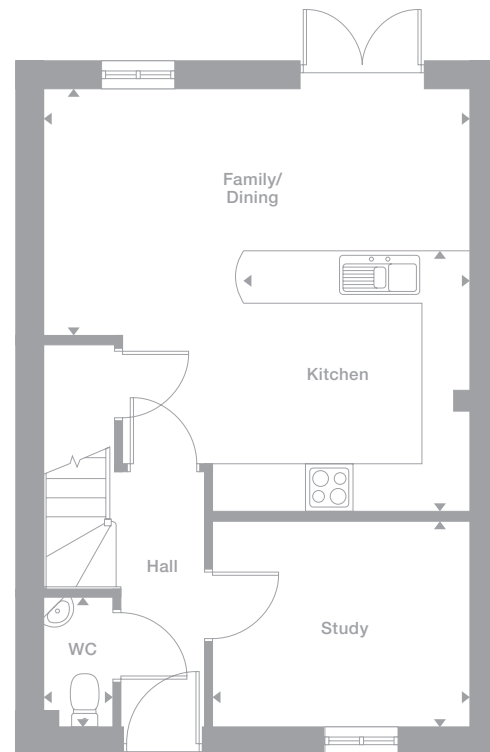
**Bathroom**  
1.71m x 1.97m  
5'7" x 6'6"

**Floor Space**  
1,387 sq ft

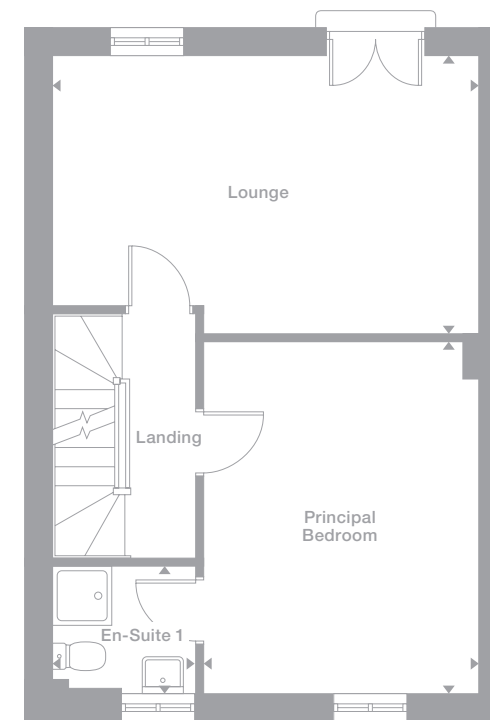
Photography represents typical Miller Homes' interiors and exteriors. All plans in this brochure are not drawn to scale and are for illustrative purposes only. Consequently, they do not form part of any contract. Room layouts are provisional and may be subject to alteration. Please refer to the 'Important Notice' section at the back of this brochure for more information.



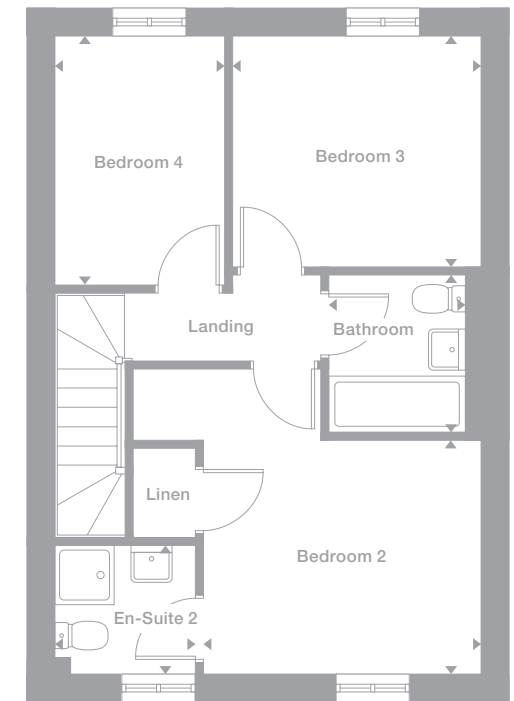
Ground Floor



First Floor



Second Floor



Some plots may be a mirror image of the floor plans. Please see Development Sales Manager for details



**Stevenson  
The Pines**

Also available in  
The Sycamores  
and The Willows.

The elegant lounge and the airy family kitchen and dining room, with its french doors, join a host of premium features in this exceptional home. There is a separate laundry, an L-shaped dual aspect study, two dual aspect bedrooms and a superb en-suite principal bedroom.

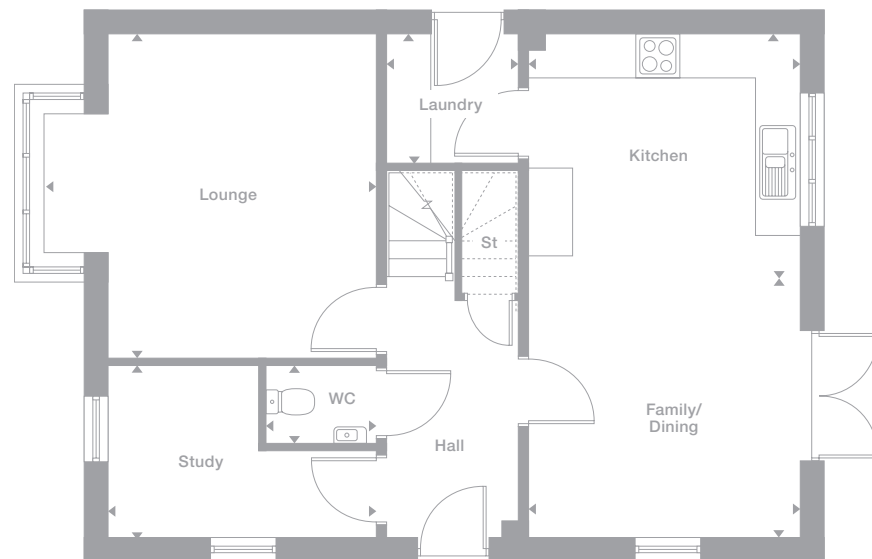
<b>Lounge</b> 4.53m x 4.42m 14'86" x 14'6"	<b>Principal Bedroom</b> 3.74m x 3.70m 12'3" x 12'2"
<b>Family/Dining</b> 3.68m x 3.53m 12'1" x 11'7"	<b>En-Suite</b> 2.09m x 1.76m 6'10" x 5'9"
<b>Kitchen</b> 3.68m x 3.33m 12'1" x 10'11"	<b>Bedroom 2</b> 3.68m x 3.23m 12'1" x 10'7"
<b>Laundry</b> 1.79m x 1.76m 5'10" x 5'9"	<b>Bedroom 3</b> 2.61m x 3.53m 8'7" x 11'7"
<b>WC</b> 1.50m x 1.06m 4'11" x 3'6"	<b>Bedroom 4</b> 3.17m x 3.06m 10'5" x 10'1"
<b>Study</b> 3.63m x 2.34m 11'11" x 7'8"	<b>Bathroom</b> 3.41m x 1.83m 11'2" x 6'0"

**Floor Space**  
1,401 sq ft  
(other styles vary)

Photography represents typical Miller Homes' interiors and exteriors. All plans in this brochure are not drawn to scale and are for illustrative purposes only. Consequently, they do not form part of any contract. Room layouts are provisional and may be subject to alteration. Please refer to the 'Important Notice' section at the back of this brochure for more information.



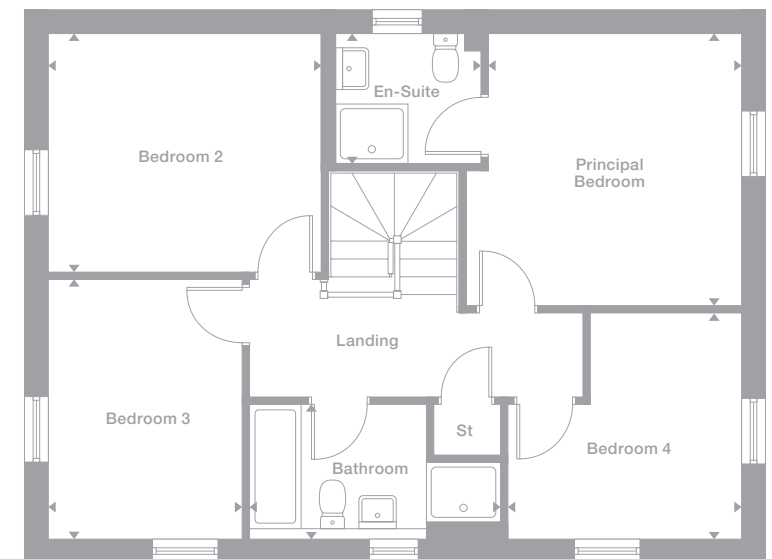
**Ground Floor**



Some plots may have splayed bay windows instead of square bay windows. Please see Development Sales Manager for details

Plot 95 does not feature a bay window. This means that the lounge dimensions change to 11' x 11' and the overall square footage reduces by 11 square feet.

**First Floor**



Some plots may be a mirror image of the floor plans. Please see Development Sales Manager for details

**Ryton  
The Pines**

Also available in  
The Sycamores

With its feature bay window, the classically proportioned lounge is an impressive space that shares the ground floor with a light, airy kitchen and dining room opening to the garden, perfect for large social gatherings. In contrast, the en-suite principal bedroom provides a luxurious retreat.

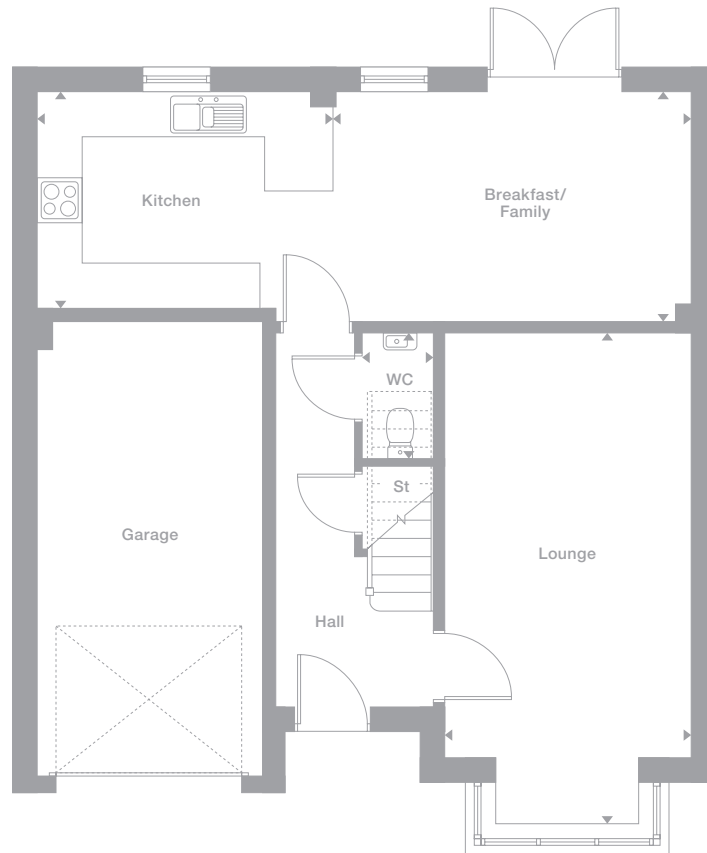
- Lounge**  
3.26m x 6.52m  
10'9" x 21'5"
- Breakfast/Family**  
4.74m x 3.05m  
15'7" x 10'0"
- Kitchen**  
3.90m x 2.88m  
12'10" x 9'5"
- WC**  
0.94m x 1.65m  
3'1" x 5'5"
- Principal Bedroom**  
3.26m x 4.43m  
10'9" x 14'7"
- En-Suite 1**  
2.27m x 1.40m  
7'6" x 4'7"
- Bedroom 2**  
4.59m x 2.75m  
15'1" x 9'1"
- En-Suite 2**  
2.99m x 1.61m  
9'10" x 5'3"
- Bedroom 3**  
3.34m x 2.80m  
10'11" x 9'3"
- Bedroom 4**  
3.14m x 3.61m  
10'4" x 11'10"
- Bathroom**  
1.98m x 1.70m  
6'6" x 5'7"

**Floor Space**  
1,408 sq ft

Photography represents typical Miller Homes' interiors and exteriors. All plans in this brochure are not drawn to scale and are for illustrative purposes only. Consequently, they do not form part of any contract. Room layouts are provisional and may be subject to alteration. Please refer to the 'Important Notice' section at the back of this brochure for more information.



**Ground Floor**



**First Floor**



Some plots may be a mirror image of the floor plans. Please see Development Sales Manager for details



**Springwood  
The Pines**

Bifold doors enhance the kitchen and dining room, and double doors into the lounge open to form a dramatic single space for large gatherings. The second floor is given over to a study and a character-filled dormer-windowed principal suite, one of the two en-suite bedrooms.

**Lounge**  
4.42m x 4.62m  
14'6" x 15'2"

**Dining**  
2.74m x 4.01m  
9'0" x 13'2"

**Kitchen**  
2.74m x 3.39m  
9'10" x 11'2"

**WC**  
0.90m x 1.67m  
2'11" x 5'6"

**Bedroom 2**  
2.74m x 3.60m  
9'6" x 11'10"

**En-Suite 2**  
1.70m x 2.20m  
5'7" x 7'3"

**Bedroom 3**  
2.63m x 4.27m  
8'8" x 14'0"

**Bedroom 4**  
2.00m x 3.70m  
6'7" x 12'2"

**Bathroom**  
1.70m x 2.13m  
5'7" x 7'0"

**Principal Bedroom**  
4.04m x 5.73m  
13'3" x 18'10"

**En-Suite 1**  
2.34m x 2.84m  
7'8" x 9'4"

**Study**  
2.34m x 3.07m  
7'8" x 10'1"

**Floor Space**  
1,503 sq ft

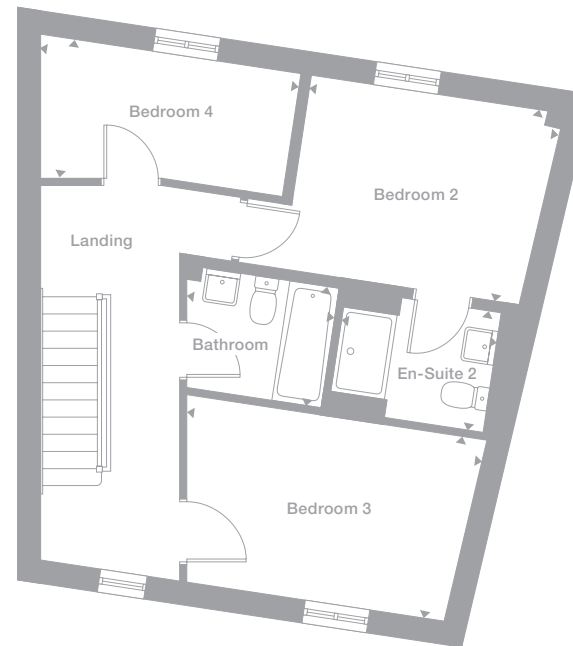
Photography represents typical Miller Homes' interiors and exteriors. All plans in this brochure are not drawn to scale and are for illustrative purposes only. Consequently, they do not form part of any contract. Room layouts are provisional and may be subject to alteration. Please refer to the 'Important Notice' section at the back of this brochure for more information.



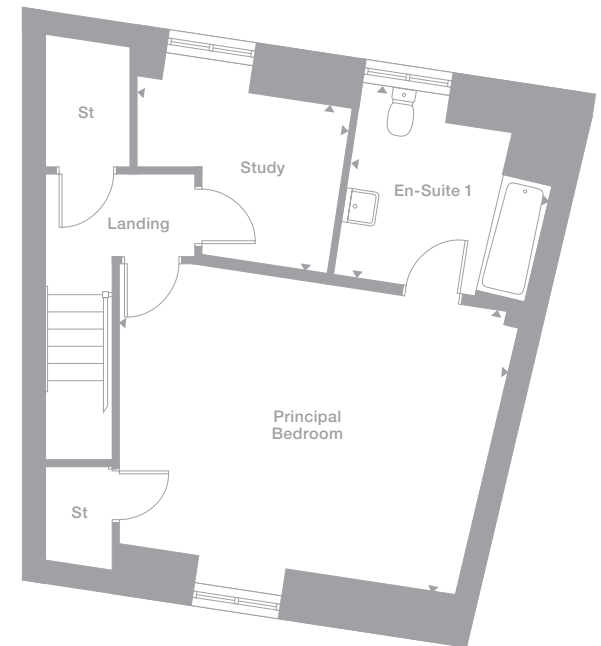
Ground Floor



First Floor



Second Floor



Some plots may be a mirror image of the floor plans. Please see Development Sales Manager for details

**Eastwood  
The Pines**

Double doors combine the lounge with the kitchen and dining area, creating a dramatic space extending via bifold doors into the garden. The bathroom and three bedrooms, one en-suite, occupy the first floor and a study and fourth bedroom, with en-suite bath, share the second.

**Lounge**  
4.59m x 4.39m  
15'1" x 14'5"

**Dining**  
3.97m x 2.70m  
13'1" x 8'11"

**Kitchen**  
3.39m x 2.70m  
11'2" x 8'11"

**WC**  
0.90m x 1.67m  
2'11" x 5'6"

**Bedroom 2**  
2.74m x 3.62m  
9'0" x 11'11"

**En-Suite 2**  
1.70m x 2.20m  
5'7" x 7'3"

**Bedroom 3**  
2.57m x 4.24m  
8'6" x 13'11"

**Bedroom 4**  
1.97m x 3.70m  
6'6" x 12'2"

**Bathroom**  
1.70m x 2.13m  
5'7" x 7'0"

**Principal Bedroom**  
5.73m x 4.04m  
18'10" x 13'3"

**En-Suite 1**  
2.84m x 2.34m  
9'4" x 7'8"

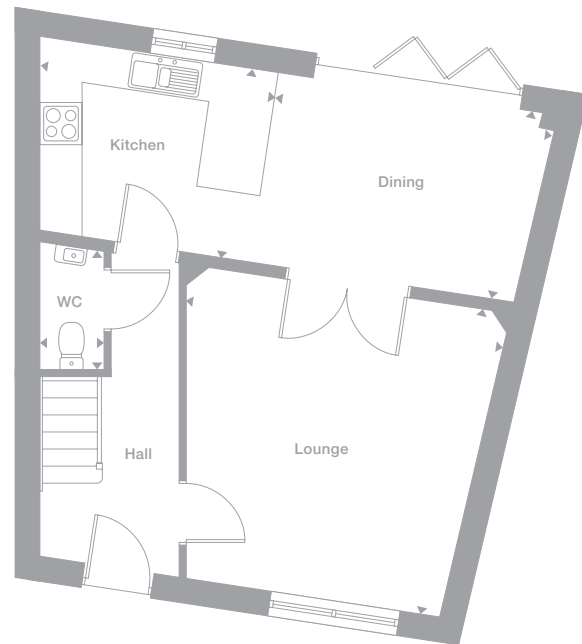
**Study**  
3.07m x 2.34m  
10'1" x 7'8"

**Floor Space**  
1,497 sq ft

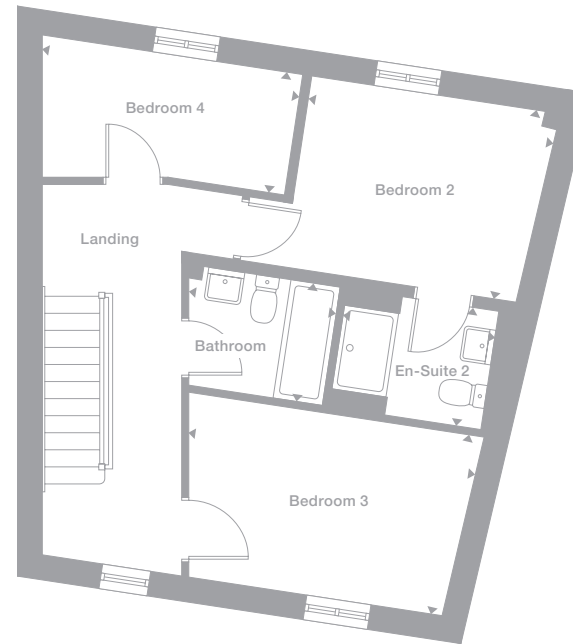
Photography represents typical Miller Homes' interiors and exteriors. All plans in this brochure are not drawn to scale and are for illustrative purposes only. Consequently, they do not form part of any contract. Room layouts are provisional and may be subject to alteration. Please refer to the 'Important Notice' section at the back of this brochure for more information.



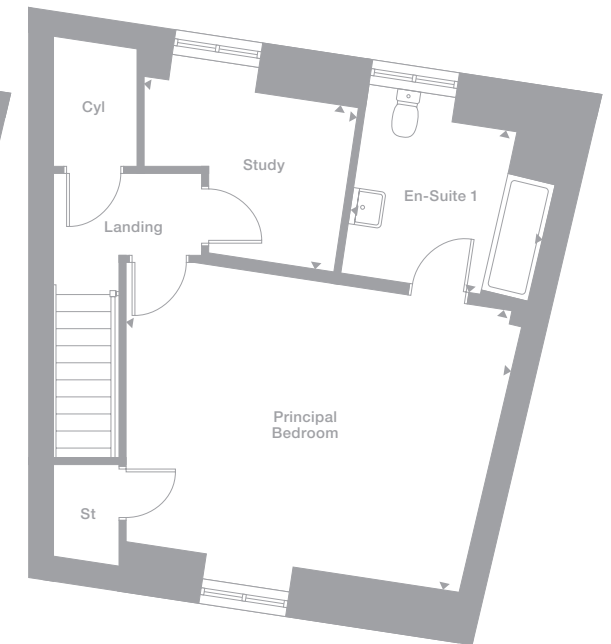
Ground Floor



First Floor



Second Floor



Some plots may be a mirror image of the floor plans. Please see Development Sales Manager for details



**Buttermere  
The Pines**

Also available in  
The Sycamores  
and The Willows.

The dramatic, bay-windowed lounge and the impressively long family kitchen and dining room, a magnificent open social space with garden access via french doors, reflect the exceptional quality of this substantial home. Three bedrooms are en-suite, offering the option of special guest accommodation.

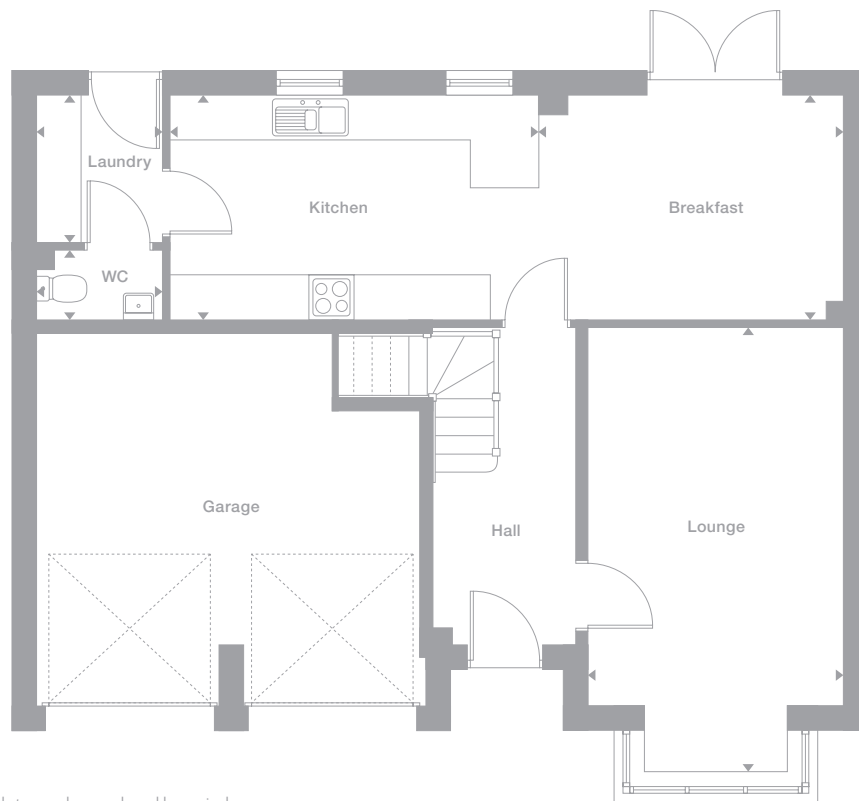
- Lounge**  
3.39m x 5.92m  
11'2" x 19'5"
- Breakfast**  
4.03m x 2.97m  
13'3" x 9'9"
- Kitchen**  
4.88m x 2.97m  
16'0" x 9'9"
- Laundry**  
1.67m x 1.96m  
5'6" x 6'5"
- WC**  
1.67m x 0.92m  
5'6" x 3'0"
- Principal Bedroom**  
2.80m x 5.18m  
9'2" x 17'0"
- En-Suite 1**  
1.85m x 2.00m  
6'1" x 6'7"
- Bedroom 2**  
3.39m x 3.64m  
11'2" x 11'11"
- En-Suite 2**  
1.64m x 2.05m  
5'5" x 6'9"
- Bedroom 3**  
3.20m x 3.05m  
10'6" x 10'0"
- En-Suite 3**  
2.38m x 1.21m  
7'10" x 4'0"
- Bedroom 4**  
2.55m x 3.17m  
8'5" x 10'5"
- Bedroom 5**  
3.25m x 2.00m  
10'8" x 6'7"
- Bathroom**  
2.08m x 2.00m  
6'10" x 6'7"

**Floor Space**  
1,509 sq ft  
Other styles vary

Photography represents typical Miller Homes' interiors and exteriors. All plans in this brochure are not drawn to scale and are for illustrative purposes only. Consequently, they do not form part of any contract. Room layouts are provisional and may be subject to alteration. Please refer to the 'Important Notice' section at the back of this brochure for more information.

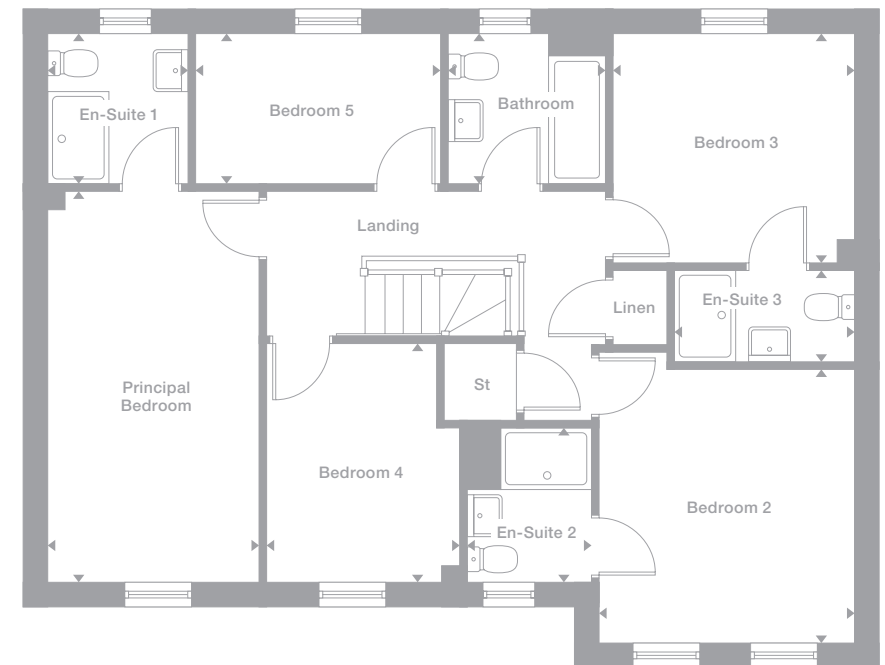


**Ground Floor**



Some plots may have splayed bay windows instead of square bay windows. Please see Development Sales Manager for details

**First Floor**



Some plots may be a mirror image of the floor plans. Please see Development Sales Manager for details

**Thames  
The Sycamores**

Also available in  
The Willows.

Beyond the stately frontage, an imposing hall introduces this truly exceptional home. A sumptuous dining room adjoins the magnificent kitchen. Bifold doors transform the family room, complementing a bay-windowed lounge. A gallery landing leads to five bedrooms, two of them en-suite. Every detail emphasises prestige.

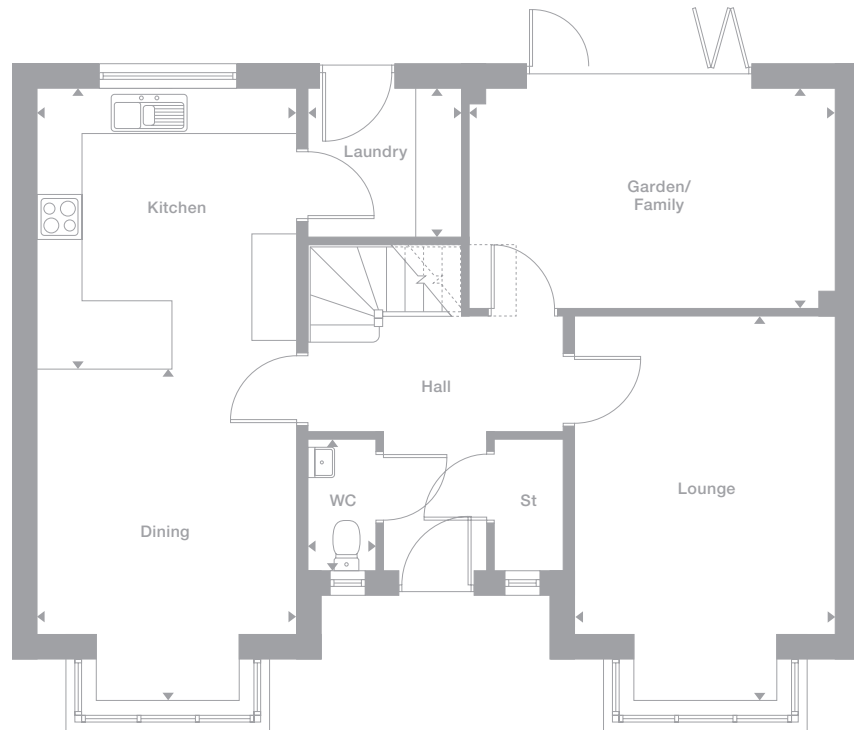
- Lounge**  
3.45m x 5.12m  
11'4" x 16'10"
- Dining**  
3.45m x 3.52m  
11'4" x 11'7"
- Kitchen**  
3.45m x 3.70m  
11'4" x 12'2"
- Garden/Family**  
4.86m x 2.91m  
15'11" x 9'7"
- Laundry**  
2.01m x 1.97m  
6'7" x 6'6"
- WC**  
0.90m x 1.74m  
2'11" x 5'9"
- Principal Bedroom**  
3.50m x 4.39m  
11'6" x 14'5"
- En-Suite 1**  
1.68m x 1.97m  
5'6" x 6'6"
- Bedroom 2**  
3.45m x 2.74m  
11'4" x 9'0"
- En-Suite 2**  
1.97m x 1.63m  
6'6" x 5'4"
- Bedroom 3**  
3.45m x 2.74m  
11'4" x 9'0"
- Bedroom 4**  
2.97m x 3.18m  
9'9" x 10'5"
- Bedroom 5**  
3.48m x 1.89m  
11'5" x 6'2"
- Bathroom**  
2.09m x 1.97m  
11'5" x 6'2"

**Floor Space**  
1,601 sq ft  
Other styles vary

Photography represents typical Miller Homes' interiors and exteriors. All plans in this brochure are not drawn to scale and are for illustrative purposes only. Consequently, they do not form part of any contract. Room layouts are provisional and may be subject to alteration. Please refer to the 'Important Notice' section at the back of this brochure for more information.

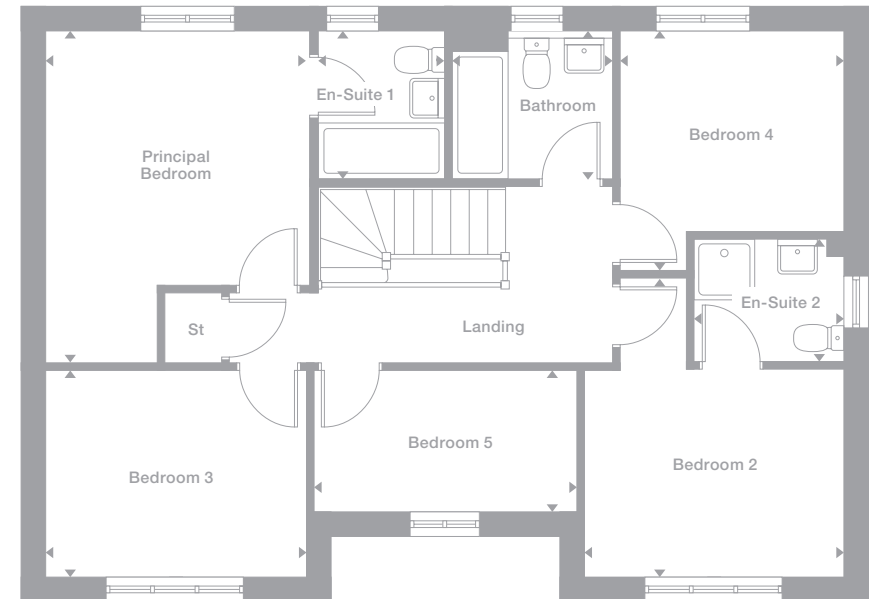


Ground Floor



Some plots may have splayed bay windows instead of square bay windows. Please see Development Sales Manager for details

First Floor



Some plots may be a mirror image of the floor plans. Please see Development Sales Manager for details



**Jura  
The Pines**

Also available in  
The Sycamores.

With its twin pairs of french doors, the spectacular kitchen and dining room presents an endlessly flexible, fascinating living space. The lounge incorporates a classic bay window, and the feature gallery landing leads to five bedrooms, two of them en-suite and two with dual windows.

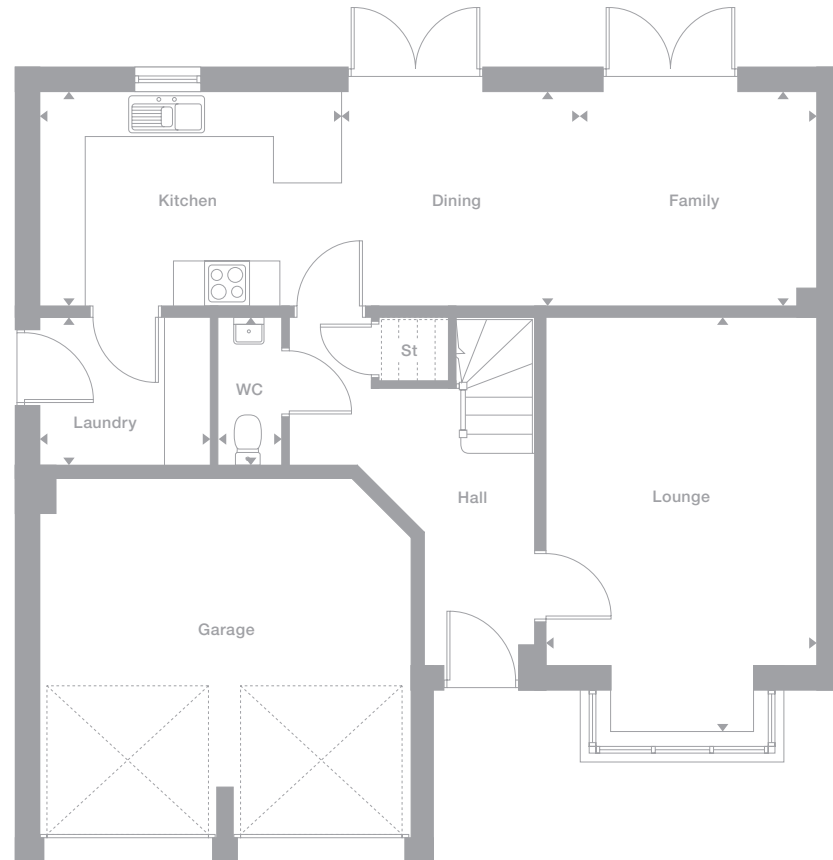
<b>Lounge</b> 3.58m x 5.49m 11'9" x 18'0"	<b>Principal Bedroom</b> 4.27m x 4.89m 14'0" x 16'1"
<b>Dining</b> 3.14m x 2.85m 10'4" x 9'4"	<b>En-Suite 1</b> 2.17m x 1.97m 7'2" x 6'6"
<b>Family</b> 3.14m x 2.85m 10'4" x 9'4"	<b>Bedroom 2</b> 3.06m x 3.57m 10'1" x 11'9"
<b>Kitchen</b> 3.98m x 2.85m 13'1" x 9'4"	<b>En-Suite 2</b> 2.01m x 1.86m 6'7" x 6'1"
<b>Laundry</b> 2.25m x 1.95m 7'5" x 6'5"	<b>Bedroom 3</b> 3.71m x 2.91m 12'2" x 9'7"
<b>WC</b> 0.85m x 1.95m 2'9" x 6'5"	<b>Bedroom 4</b> 3.28m x 2.91m 10'9" x 9'7"
	<b>Bedroom 5</b> 3.63m x 2.63m 11'11" x 8'8"
	<b>Bathroom</b> 2.60m x 1.87m 8'6" x 6'2"

**Floor Space**  
1,679 sq ft

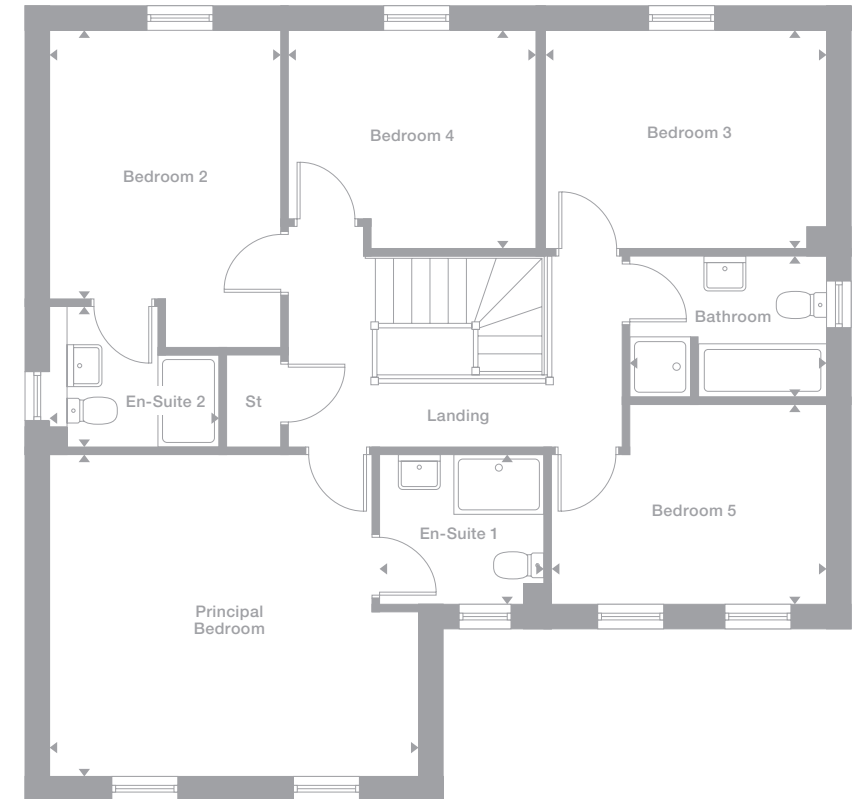
Photography represents typical Miller Homes' interiors and exteriors. All plans in this brochure are not drawn to scale and are for illustrative purposes only. Consequently, they do not form part of any contract. Room layouts are provisional and may be subject to alteration. Please refer to the 'Important Notice' section at the back of this brochure for more information.



Ground Floor



First Floor



Some plots may be a mirror image of the floor plans. Please see Development Sales Manager for details

**Deakin**  
**The Sycamores**

Also available in  
The Pines.

From the bi-fold doors of the breathtaking kitchen to the bay windows enhancing the lounge and the family room, from the feature staircase and landing to the two en-suite bedrooms, one with a full bathroom, this is a distinguished home of the highest grade.

- Lounge**  
3.83m x 6.12m  
12'7" x 20'1"
- Dining**  
3.83m x 3.52m  
12'7" x 11'7"
- Kitchen**  
6.45m x 6.08m  
21'2" x 20'0"
- Laundry**  
2.32m x 1.67m  
7'8" x 5'6"
- WC**  
0.99m x 1.67m  
3'3" x 5'6"
- Study/Family**  
3.41m x 3.80m  
11'2" x 12'6"
- Principal Bedroom**  
3.41m x 4.47m  
11'2" x 14'8"
- En-Suite 1**  
3.41m x 1.90m  
11'2" x 6'3"
- Bedroom 2**  
3.89m x 2.62m  
12'9" x 8'7"
- En-Suite 2**  
2.75m x 1.42m  
9'0" x 4'8"
- Bedroom 3**  
2.94m x 4.14m  
9'8" x 13'7"
- Bedroom 4**  
2.75m x 2.53m  
9'0" x 8'4"
- Bedroom 5**  
3.41m x 2.31m  
11'2" x 7'7"
- Bathroom**  
2.75m x 2.00m  
9'0" x 6'7"

**Floor Space**  
2,116 sq ft

Photography represents typical Miller Homes' interiors and exteriors. All plans in this brochure are not drawn to scale and are for illustrative purposes only. Consequently, they do not form part of any contract. Room layouts are provisional and may be subject to alteration. Please refer to the 'Important Notice' section at the back of this brochure for more information.



Ground Floor



First Floor



Some plots may be a mirror image of the floor plans. Please see Development Sales Manager for details

R = Rooflight

**Leader**  
The Sycamores

Unforgettably inspiring, the kitchen includes a light-filled family space. A striking lounge extends from bay window to french doors. The gallery landing leads to a sumptuous principal suite. A second en-suite serves bedrooms three and four. This is a home filled with outstanding features.

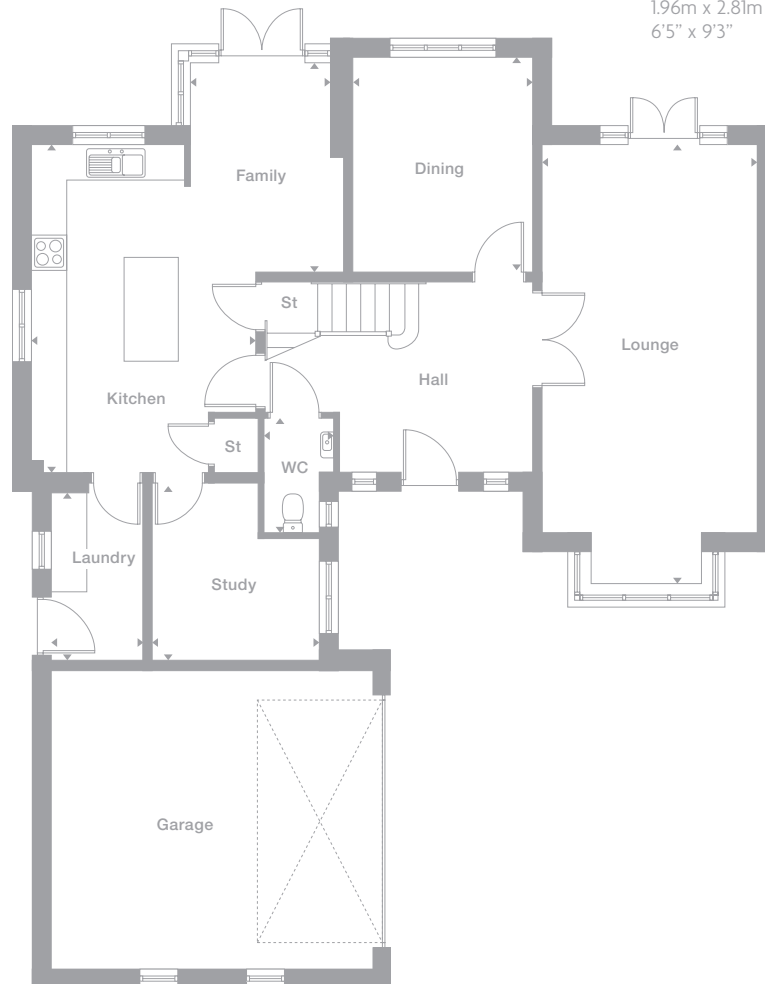
- Lounge**  
3.65m x 6.55m  
12'0" x 21'6"
- Dining**  
3.05m x 3.65m  
10'0" x 12'0"
- Kitchen**  
3.79m x 5.54m  
12'6" x 18'2"
- Family**  
2.59m x 3.50m  
8'6" x 11'6"
- Laundry**  
1.55m x 2.83m  
5'1" x 9'4"
- WC**  
1.16m x 1.92m  
3'10" x 6'4"
- Study**  
2.83m x 3.00m  
9'3" x 9'10"
- Principal Bedroom**  
3.63m x 7.12m  
to 1.200m H.L.  
11'11" x 23'5"
- En-Suite 1**  
1.83m x 2.78m  
6'0" x 9'2"
- Bedroom 2**  
3.00m x 3.85m  
9'10" x 12'8"
- Bedroom 3**  
3.70m x 3.75m  
12'2" x 12'4"
- En-Suite 2**  
2.20m x 2.42m  
7'3" x 7'11"
- Bedroom 4**  
2.79m x 3.47m  
9'2" x 11'5"
- Bedroom 5**  
2.60m x 4.16m  
6'7" x 13'8"
- Bathroom**  
1.96m x 2.81m  
6'5" x 9'3"

**Floor Space**  
2,197 sq ft

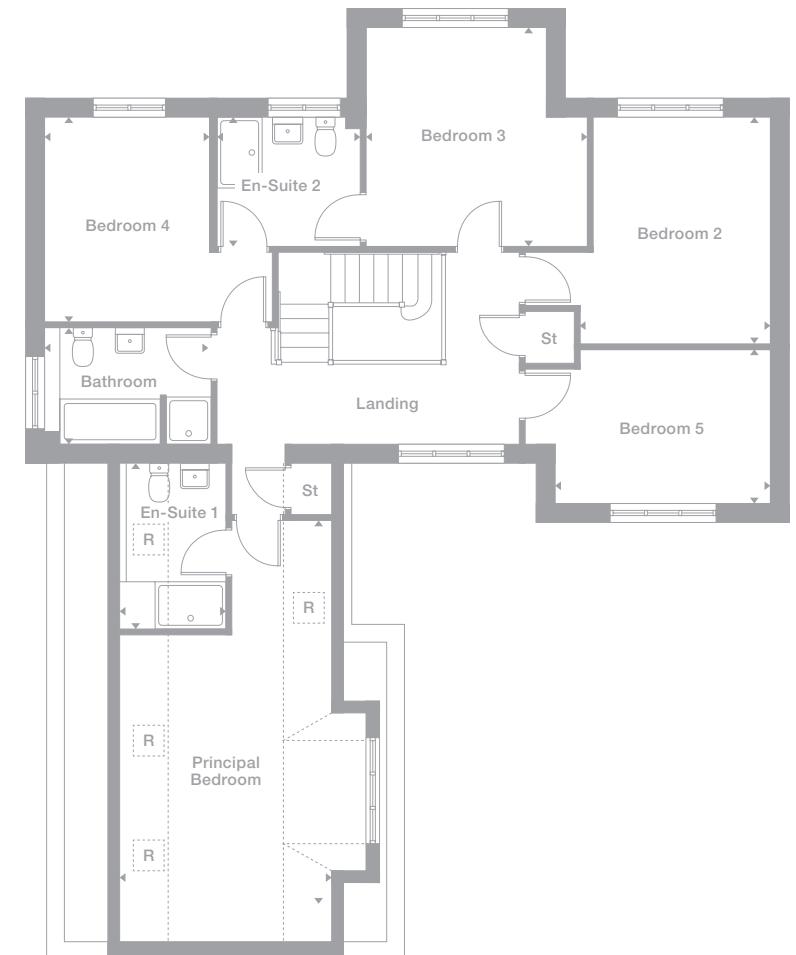
Photography represents typical Miller Homes' interiors and exteriors. All plans in this brochure are not drawn to scale and are for illustrative purposes only. Consequently, they do not form part of any contract. Room layouts are provisional and may be subject to alteration. Please refer to the 'Important Notice' section at the back of this brochure for more information.



Ground Floor



First Floor



Some plots may be a mirror image of the floor plans. Please see Development Sales Manager for details

R = Rooflight



**The Miller Difference**

We're enormously proud of the homes we've been building for the last 85 years, and throughout that time we've been listening to our customers and learning from them. From insisting on the best workmanship and the highest quality materials right through to recognising our responsibilities to the environment.

During this time we've seen many generations of families enjoy our homes and developments, and we've seen the happy, thriving communities they've become.

**Trust**

For us, the most important people are the customers who choose our homes in which to build their future. Their satisfaction and confidence in us, from our very first meeting onwards, is a key measure of our success.

We're proud of the independent surveys that consistently show our high levels of customer satisfaction. That's the real barometer of our quality and our service.

**Helping where we can**

We invest everything into your customer journey – it's designed not just to please you, but to exceed your expectations.

When you become a Miller customer, we'll listen to you right from the start. From the day you first look around a showhome until long after you've moved in, we're here to offer help and support. We've been doing this a long time so we have a vast amount of experience to draw on.

We don't want you to just be satisfied, we want you to be proud of your new home and delighted by the whole experience. We want you to recommend us, too.

**Pushing up standards**

We frequently win awards for the quality of our homes. For their generous specification, skilful construction, beautiful locations, and for the teams that build them. We are acknowledged experts in the field. You can see the quality of our product and you will notice the quality of our service as we guide you through the many different ways of buying your home. It's a customer journey that has taken 85 years to perfect.

We know the importance of workmanship and job satisfaction. We look after our teams, we train and employ the best people and we reward safe and careful practice.

**Keeping you involved**

First you'll meet your Development Sales Manager who will give you any help you need in choosing and buying your home. Then your Site Manager, who will supervise the build of your home and answer your questions along the way.

We'll invite you to a pre-plaster meeting with your Site Manager during the construction of your new home, where you'll get to see, first hand, the attention to detail, care and craftsmanship involved.

Wherever practical, we ask you to choose your own kitchen and bathroom including your own tiles, worktops, appliances and other options. Your home becomes personal to you long before we've finished building it.

**A Better Place**

We don't just create more homes, we enhance locations with our developments. Places where people will make friends, enjoy family life and take pride in their neighbourhoods and surroundings. We even provide a unique [www.mymillerhome.com](http://www.mymillerhome.com) website to keep you up to date on the build progress of your home and to help you get to know the area, your neighbours and live more sustainably once you've moved in.

**For your future**

For us, success is building exceptional homes, in sustainable communities. And that's how we've built a business that goes from strength to strength.



Registered Developer



The beautiful surrounding countryside includes nearby nature reserves at Otley Chevin Forest Park, Breary Marsh and Adel Dam, the last two flanking the wonderful Golden Acre Park. The Park, which includes lakeside walks, gardens and a cafe, is a starting point for the long-distance Leeds Country Way and the shorter Meanwood Valley Trail. Cookridge Hall and Headingley golf clubs are both within three miles.

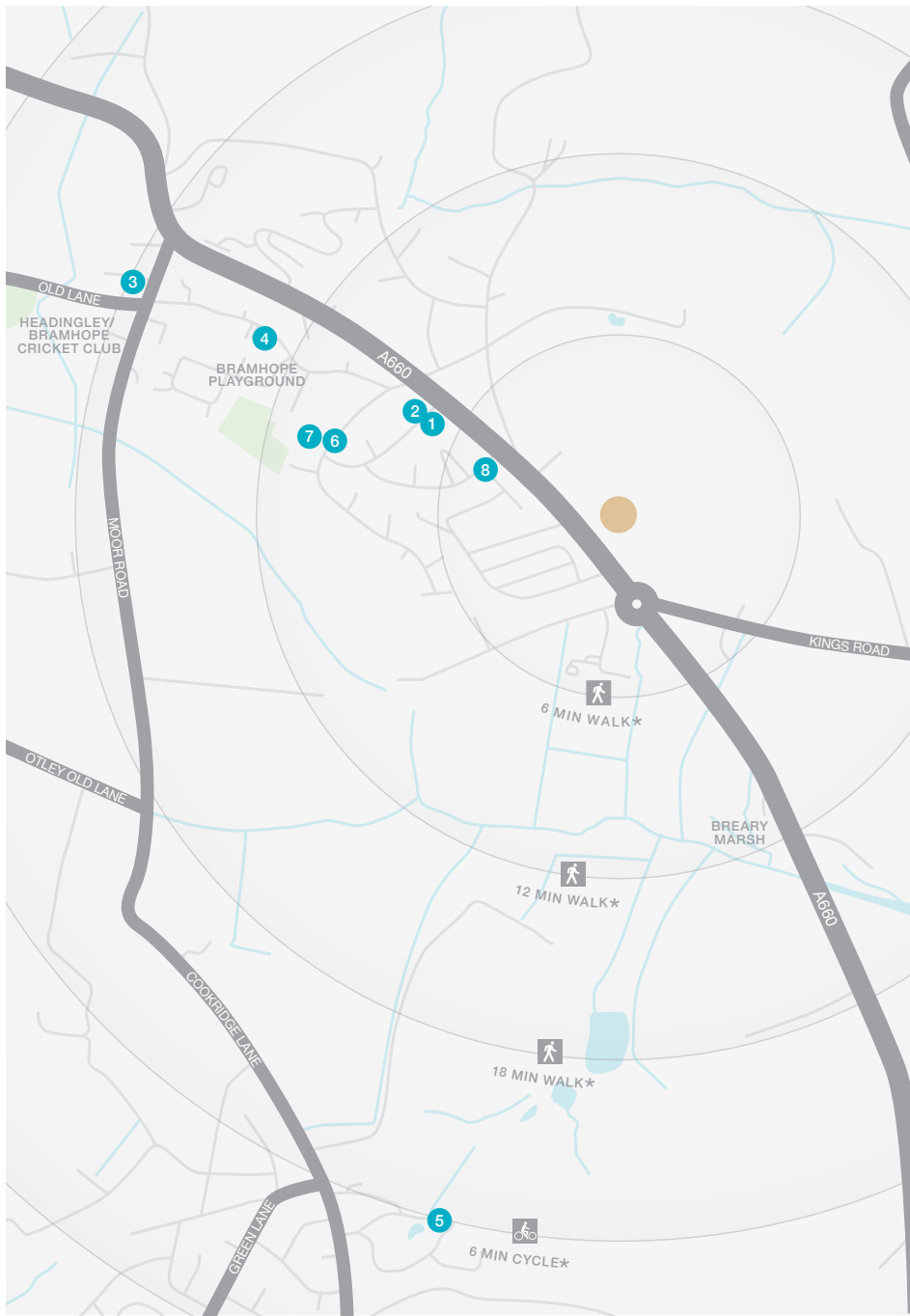






Bramhope Primary School is just over half a mile from Spring Wood Park, on a spacious site with playing fields and a wildlife garden. The school, which has an associated nursery on site, is recognised as 'Outstanding' by Ofsted. Bramhope Primary is a feeder school for Prince Henry's Grammar School in nearby Otley, a highly regarded secondary with specialist language college status. Health services include a large full-time surgery near the Primary School and there are dental surgeries in Holt Park and Otley, and an optician within a few minutes' walk of Spring Wood Park.





- 1 The Bramhope Deli  
4 Tredgold Avenue  
0113 261 4776
  - 2 Christalya One Stop Shop  
3 Tredgold Avenue  
0113 267 3671
  - 3 The Fox and Hounds  
Church Hill  
07973 471 032
  - 4 Stancliffe Pharmacy  
4 The Parade  
0113 284 2448
  - 5 Cookridge Hall Golf Club  
Cookridge Lane  
0113 230 0641
  - 6 Bramhope Primary School  
Tredgold Crescent  
0113 267 1222
  - 7 The Health Centre  
Tredgold Crescent  
01943 858 300
  - 8 Senior & Rhodes Opticians  
108 Leeds Road  
0113 230 1327
- Adel Post Office  
425 Otley Road  
0113 267 3060
- Prince Henry's  
Grammar School,  
Farnley Lane, Otley  
01943 463 524

\* Times stated are averages based on approximate distances and would be dependent on the route taken.

Based on:  
0.5km = 5 to 7 mins walk  
1.0km = 10 to 14 mins walk  
1.5km = 15 to 21 mins walk  
2.0km = 5 to 8 mins cycle

**From Leeds**

Leave Leeds by the A660 Headingley Lane, and stay on the A660 through Headingley. At the junction just after passing the Village hotel and gym on the right, bear right to stay on the A660. Follow the A660 through the next roundabout and for a further three miles. Three hundred yards beyond the roundabout on the edge of Bramhope, Spring Wood Park is on the right.

**From Bradford**

Leave Bradford by the A658 Harrogate Road following signs for the airport. Go through the underpass at the airport and stay on the A658 for another two miles, then at the crossroads with traffic lights turn right to join the A660, signposted for Leeds. Follow the A660 for one and a half miles, as the road goes through Bramhope, and around 300 yards after passing the optician's shop that stands on the right, Spring Wood Park is on the left.

Sat Nav: LS16 9AP

Development  
Opening Times:  
Thursday - Monday  
10.30am - 5.30pm

03301 736 936

We've been building homes since 1934, that's three generations of experience. We've learned a lot about people and that's made a big difference to what we do and how we do it. We're enormously proud of the homes we build, combining traditional craftsmanship with new ideas like low carbon technologies. The big difference is that we don't stop caring once we've finished the building, or when we've sold the house, or even once you've moved in. We're there when you need us, until you're settled, satisfied and inviting your friends round.

**miller**homes

**Important Notice:**

Although every care has been taken to ensure the accuracy of all the information given, the contents do not form part of any contract, or constitute a representation or warranty, and, as such, should be treated as a guide only. Interested parties should check with the Development Sales Manager and confirm all details with their solicitor. The developer reserves the right to amend the specification, as necessary, without prior notice, but to an equal or higher standard. Please note that items specified in literature and showhomes may depict appliances, fittings and decorative finishes that do not form part of the standard specification. The project is a new development which is currently under construction. Measurements provided have not been surveyed on-site. The measurements have been taken from architect's plans, and, as such, may be subject to variation during the course of construction. Not all the units described have been completed at the time of going to print and measurements and dimensions should be checked with the Development Sales Manager and confirmed with solicitors.

[millerhomes.co.uk](http://millerhomes.co.uk)

# SPRING WOOD PARK