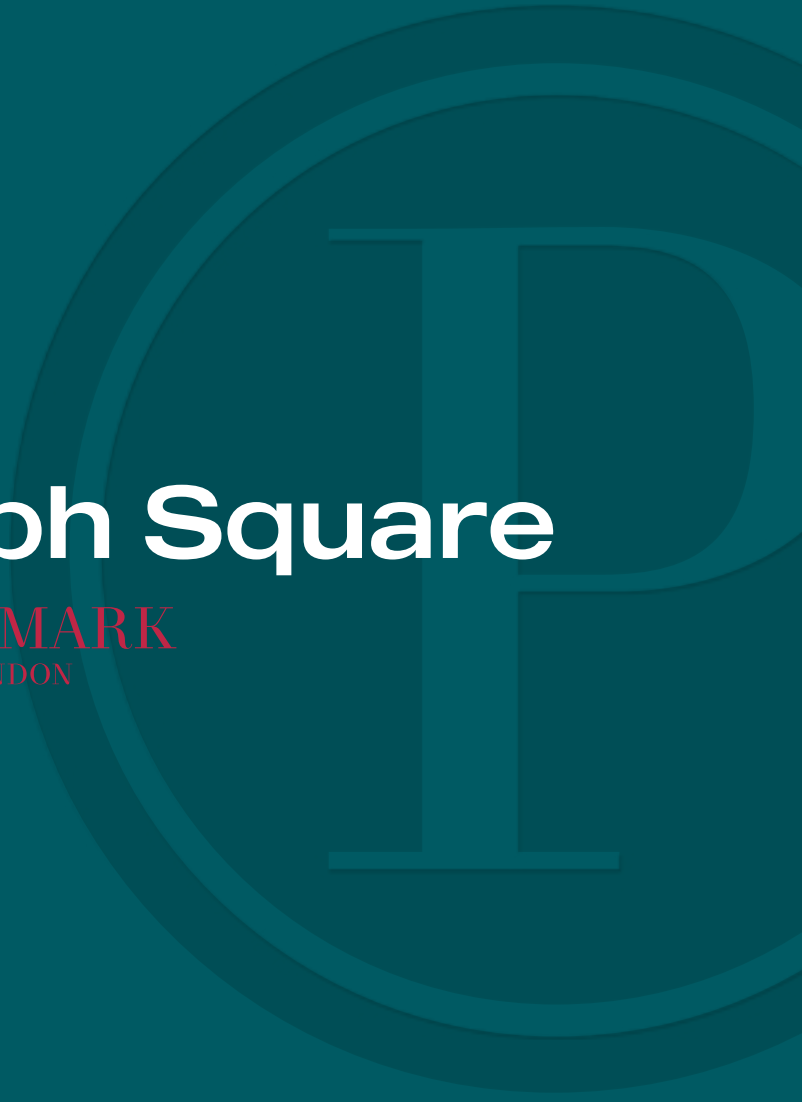


Monograph Square

POSTMARK
LONDON





Welcome to Monograph Square,
the final chapter of Postmark –
one of central London’s most dynamic
and thriving destinations.

At the heart of Zone 1, where WC1 and
EC1 converge, join a neighbourhood
that brings together local charm,
a diverse community, and the buzz
of city-centre living.

POSTMARK
LONDON



OVER
650 CONTEMPORARY
& STYLISH
APARTMENTS

FOUR
INTERNATIONALLY
RENOWNED ARCHITECTS

23,000
SQ FT COMMUNITY &
RETAIL SPACES

ACROSS **TWO** ICONIC
POSTCODES
WC1 & EC1

50% DEDICATED TO
GREEN SPACE &
PUBLIC REALM

The transformation of the former Royal Mail Mount Pleasant sorting office site into over 650 stylish apartments, a new public realm, and unique retail space is almost complete. Already home to numerous residents with the successful launches of WC1, Signature Place (with its luxury wellness centre) and Folio Gardens, life at Postmark is flourishing. Monograph Square will begin to welcome residents to their new homes in 2025, bringing further new landscaped community space, and marks the completion of Postmark's ambitious masterplan.



Computer-enhanced aerial view of Postmark

▽ KING'S CROSS ST PANCRAS

REGENT'S PARK ▵

WEST END ▸

The true heart of London

Postmark enjoys a prime position where the very best of London comes together. Its unique location, minutes from world-class restaurants, renowned shopping and celebrated cultural and educational institutions, is where east meets west in central London. Add four major underground stations within a 15-minute walk, and you're connected to the wider city and beyond, with ease.



Home to London's finest

Situated where the iconic postcodes of WC1 and EC1 meet, Postmark taps into the sophistication and history of the West End and the energy of east London. Spot blue plaques as you walk along Bloomsbury's famous streets or explore Clerkenwell's design shops and family-run restaurants. Choose from local boutiques or celebrated flagships that line Bond Street and the streets of Covent Garden. Just moments away – on foot, by bike or public transport – find cultural institutions that have followers flocking from around the globe. And amongst it all find a quiet spot to meet with friends and relax in Monograph Square's new public space that adds more greenery to the neighbourhood's parks and squares.

A gastronomic gateway



1.



2.

A haven for foodies, Postmark places you right by London's favourite go-to restaurants, cafés and bars. On your doorstep explore the delights of Exmouth Market, try tapas at the perennially popular Moro, the "butcher's theatre" of Macellaio RC, or classic British fare at St. John. After, head to The Zetter Townhouse hotel for cocktails before a short stroll home.



3.



4.

1. Caravan, Kings Cross
2. Canopy Market, Kings Cross
3. The Exmouth Arms
4. Morty & Bob's, Coal Drops Yard
5. The Quality Chop House
6. Exmouth Market, Farringdon
7. Canopy Market, Kings Cross



5.



6.

“
Feast your senses on the
neighbourhood's fine array
of international cuisine.
”



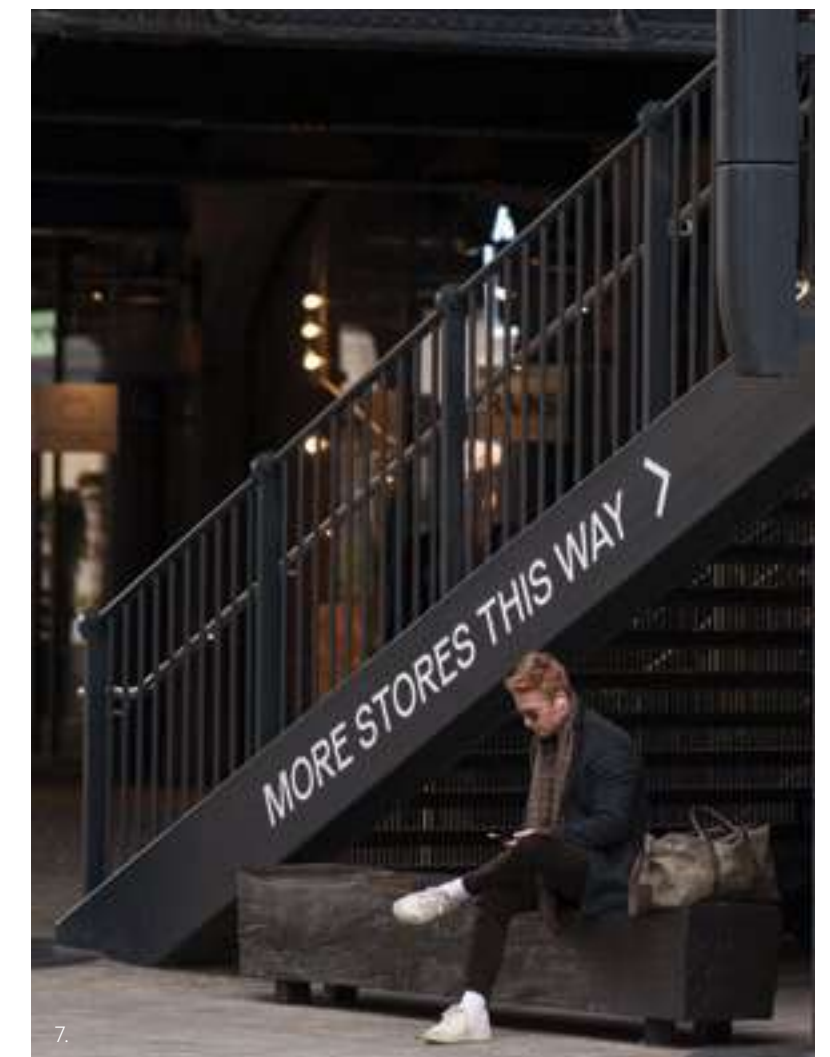
7.



“
Find luxury labels,
independent boutiques
and high street names,
all minutes away.
”



There are the shops of Exmouth Market to explore, or head to Coal Drops Yard for a mix of new and well-known brands before stopping for lunch at Caravan or Dishoom. Venturing south, find Covent Garden's cobbled Piazza to browse and buy the latest wares from designer stores and household brands.



1. Wolf & Badger, Coal Drops Yard
2. Astrid & Miyu, Coal Drops Yard
3. Botanique Workshop, Farringdon
4. Aesop, Kings Cross
5. Coal Drops Yard
6. Ace & Tate, Coal Drops Yard
7. Coal Drops Yard



Captivating culture

Discover an abundance of cultural and educational institutions minutes from Postmark.

Be inspired by an exhibition at the British Museum or Barbican Centre, enjoy theatre and ballet at Sadler's Wells, or a lunchtime lecture at SOAS or Central Saint Martins. In the evening be enchanted by an aria performed by the greatest singers in the world at Covent Garden's exquisite Royal Opera House.



- 1. Barbican Centre
- 2. St James Clerkenwell
- 3. The British Library
- 4. Royal Academy of Arts

“
At the centre of the world’s
cultural capital be surrounded
by museums, galleries,
libraries and more.
”

A hotbed of learning

ual: central
saint martins

#1 INTERNATIONAL
STUDENT CITY

NINE
UNIVERSITIES
WITHIN ONE MILE

45 LONDON
UNIVERSITIES
WITH OVER
30,000 COURSES

Four
TOP 100 WORLD
RANKED UNIVERSITIES



London's esteemed
educational institutions
have been producing
the world's most talented
minds for centuries.

Two Royal Academies, the London School of Economics, SOAS, Central Saint Martins and UCL. At Postmark you are surrounded by leaders in every field of learning. Add to this access to highly sought-after primary and secondary schools, such as the Lyceum Preparatory School, Westminster School and the City of London School for Girls, and you'll feel at home in a hub of educational excellence.



1. King's College London
2. SOAS, London

Universities

UAL – University of the Arts London

5 MINS | WC1V

Royal College of Arts

6 MINS | WC1B

Central Saint Martins (UAL)

8 MINS | N1C

LSE – London School of Economics and Political Science

9 MINS | WC2A

King’s College London

10 MINS | WC2R

UCL – University College London

10 MINS | WC1E

Bayes Business School

13 MINS | EC1Y

London College of Fashion (UAL)

13 MINS | W1G

Royal Academy of Music

14 MINS | NW1

SOAS – School of Oriental and African studies

18 MINS | WC1H

Imperial College London

22 MINS | SW7

Schools

SECONDARY

City of London School for Girls

12 MINS | EC2Y

Queen’s College

13 MINS | W1G

Southbank International School

14 MINS | W1T

Wetherby Senior School

14 MINS | W1U

Stoke Newington School + Sixth Form

18 MINS | N16

Westminster School

18 MINS | SW1P

PRIMARY

Christopher Hatton Primary School

3 MINS | EC1R

Hugh Myddelton Primary School

3 MINS | EC1R

Dallington School

6 MINS | EC1V

Queen’s College Preparatory School

11 MINS | W1B

The Lyceum Preparatory School

12 MINS | EC2A

International Community School

14 MINS | W1H

- 1. University of the Arts, Kings Cross
- 2. London School of Economics
- 3. London Students
- 4. University College London



1.



3.



2.



4.

TOP UNIVERSITIES
WITHIN A
5 MINUTE WALK

City,
University of London

London College of
Contemporary Arts

SOAS,
University of London

London's best



EAT & DRINK

- 01 Angler
- 02 B&H Buildings
- 03 Caravan
- 04 Club Gascon
- 05 Coal Drops Yard
- 06 Exmouth Market
- 07 Frederick's
- 08 Gallipoli
- 09 Leather Lane Market
- 10 Luca
- 11 Megan's
- 12 Moro
- 13 Mousetail Coffee
- 14 Ottolenghi Islington
- 15 Rosewood London
- 16 Smiths of Smithfield
- 17 St John
- 18 The Clerkenwell Kitchen
- 19 The Coach
- 20 The Green
- 21 The Island Queen
- 22 The Narrowboat
- 23 The Ned
- 24 The Quality Chop House
- 25 The Waldorf Hilton



EDUCATION

- 01 AA School of Architecture
- 02 Birkbeck University of London
- 03 Bayes Business School (formerly Cass)
- 04 Central Saint Martins College of Art and Design
- 05 City of London School for Girls
- 06 City, University of London
- 07 Hult International Business School
- 08 Kings College London
- 09 London School of Economics and Political Science
- 10 SOAS University of London
- 11 University of Arts
- 12 University of Arts: London College of Fashion
- 13 University College London
- 14 University of London



SHOPPING

- 01 Bond Street
- 02 Coal Drops Yard
- 03 Exmouth Market
- 04 Islington High Street
- 05 Oxford Circus/Regent Street
- 06 Selfridges
- 07 Upper Street Angel
- 08 Waitrose & Partners



PARKS & GREEN SPACES

- 01 Brunswick Square
- 02 Coram's Fields
- 03 Granary Square
- 04 Lincoln's Inn Fields
- 05 Regent's Canal
- 06 Regent's Park
- 07 Russell Square
- 08 Shoreditch Park



ART & CULTURE

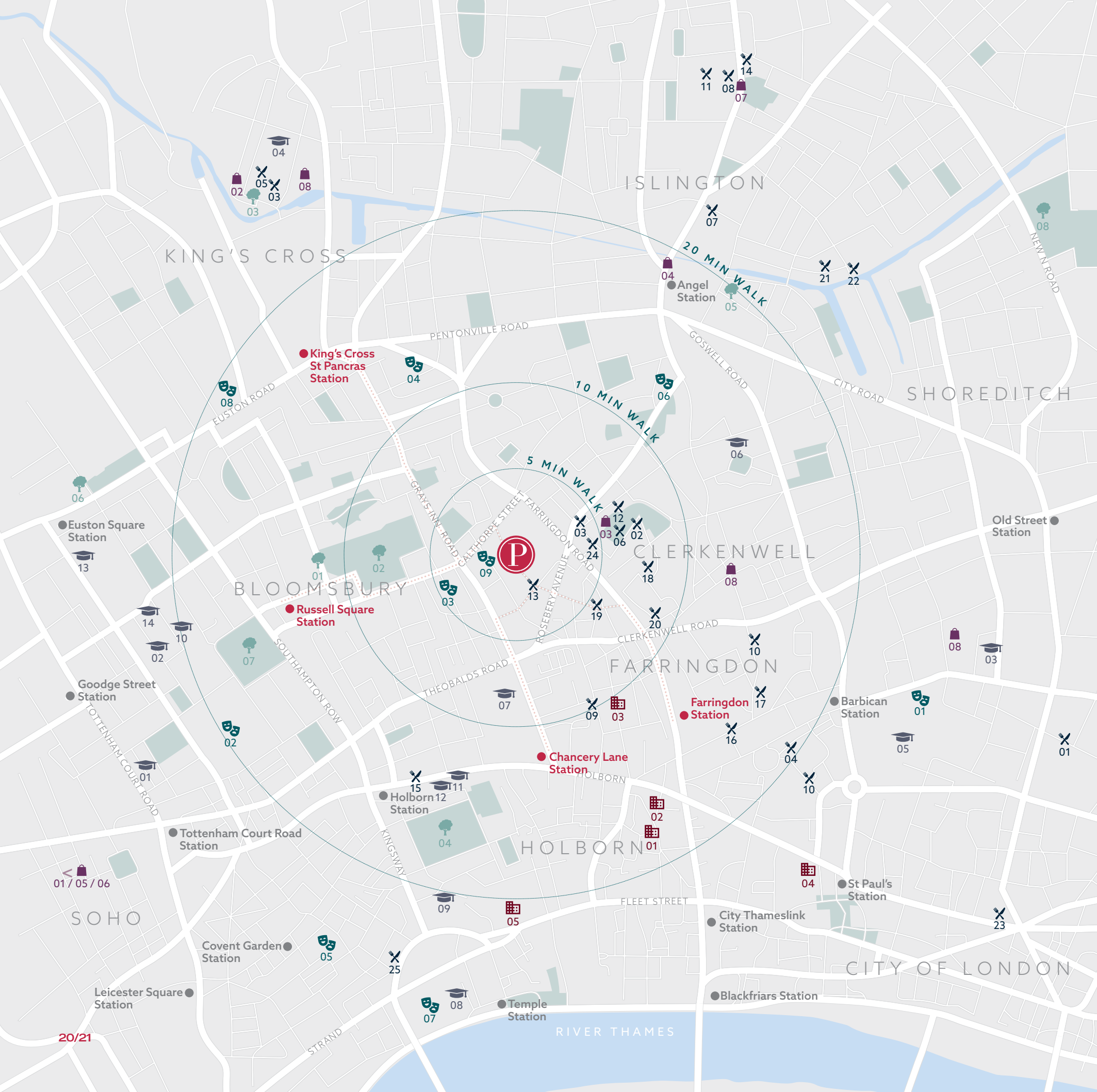
- 01 Barbican Centre
- 02 British Museum
- 03 Charles Dickens Museum
- 04 Gagosian Gallery
- 05 Royal Opera House
- 06 Sadler's Wells Theatre
- 07 Somerset House
- 08 The British Library
- 09 The Postal Museum



BUSINESSES

- 01 Deloitte LLP
- 02 Goldman Sachs International
- 03 Hatton Garden
- 04 London Stock Exchange
- 05 The Royal Courts of Justice

Source: Google Maps. All walking times and distances are approximate only. All information correct at time of print.



Connect

and explore

Be better connected,
however you like to get
around, or wherever
you need to go.

The whole of central London is easily accessible on foot, by bike or by tube, with four underground lines within 15 minutes. The new Elizabeth Line at Farringdon will also now whisk you to Soho or to Liverpool Street and the City in a single stop, or take you smoothly to Heathrow. A short walk also unlocks the possibilities of Eurostar routes across Europe from St Pancras International.





Stay connected

Chancery Lane

St Paul's	2
Bank	4
Oxford Circus	5
Marylebone	11
Kensington Palace	21

Farringdon

Bond Street	4
Liverpool Street	5
Canary Wharf	8
Stratford	10
Tower Bridge	17

Russell Square

Covent Garden	3
Piccadilly Circus	5
Hyde Park	9
Knightsbridge	9
Sloane Square	18

King's Cross St Pancras

Shoreditch	9
Camden	10
London Bridge	11
Chinatown	17
Soho	17

4 STATIONS
WITHIN A
15 MINUTE
WALK

Walk



Exmouth Market	5
Chancery Lane	8
Farringdon	10
Russell Square	15
King's Cross	15
St Paul's Cathedral	20

Cycle



St Paul's Cathedral	7
Tate Modern	10
Shoreditch High Street	12
London Bridge	12
Covent Garden	14
Hyde Park	17

Elizabeth Line *



Bond Street	4
Paddington	8
Canary Wharf	8
Stratford (Westfield)	10
Heathrow Airport	31

Train



From Farringdon via Thameslink	
Luton Airport	35
Gatwick Airport	40
From St Pancras International via Eurostar	
Paris	2 HR 16 MIN

Welcome to Monograph Square





Computer-generated image of Manuscript Court entrance lobby and concierge

Welcome home

Come home to an inviting lobby with 24/7 concierge, and enjoy access to state-of-the-art wellness facilities and secure cycle storage.



Living area show home photography

137 new private residences provide sophistication every day with architecture by White Ink, and two exclusive interior palettes by WISH Interior Architecture.



East palette kitchen

Elegant kitchens are designed with timber edge detailing inspired by the pigeon holes from the postal office and finished with striking marble inspired stone.



Primary bathroom east palette

Fine finishes and fixtures complement soothing tones and rich materials to create spa-like bathrooms.



Primary bathroom west palette





Secondary bedroom show home photography

When not enjoying the outside from private balconies and terraces, unwind in meticulously crafted one, two, three or four - bedroom residences.



Third bedroom, show home photography



Wellness Centre swimming pool, jacuzzi, steam room, experience shower and sauna

An Oasis in the city

Invigorate the body and calm the mind at Monograph Square, with exclusive residents' access to an exquisite Wellness Centre at neighbouring Signature Place, boasting cutting-edge facilities.

6,000
SQ FT
WELLNESS CENTRE



State of the art gym

The Wellness Centre at Postmark features an 18m pool, jacuzzi, sauna, steam room, gym, fitness studio and treatment room.

2,000
SQ FT
GYM AND STUDIO



Wellness Centre changing rooms

More **space** for comfort

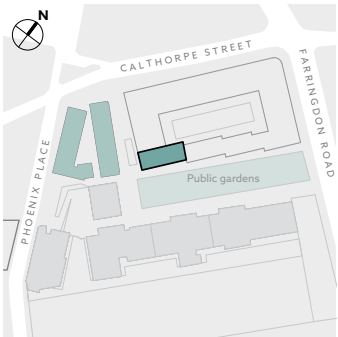
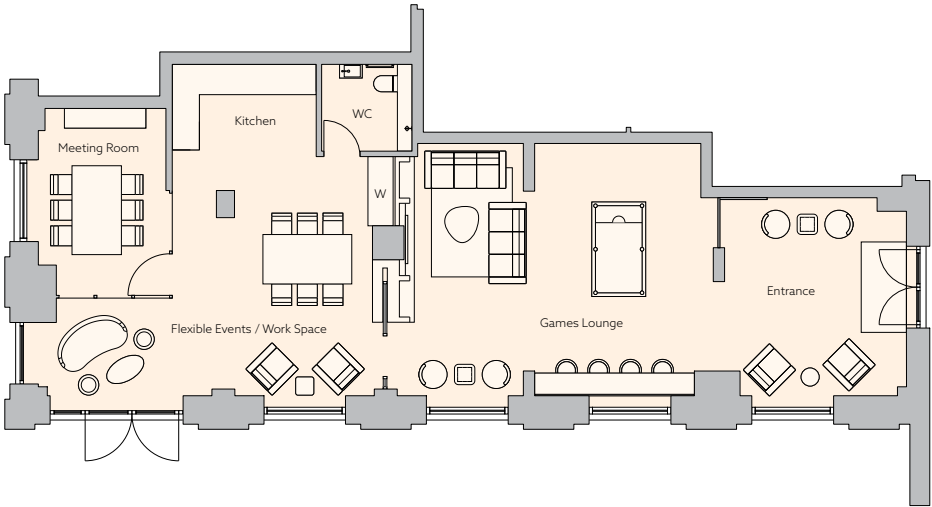


Computer-generated image of the residents' lounge

Postmark also provides an exclusive multi use residents' lounge, including a games area, meeting room and flexible event / work space.

Amenities Space

Total internal area 93.9m² | 1004 sqft



a place to **work** or meet

CHANCERY LANE
8 MINS

FARRINGDON
10 MINS

RUSSELL
SQUARE
15 MINS

KING'S CROSS
ST PANCRAS
15 MINS



WC1

Signature Place

Folio Gardens

MONOGRAPH SQUARE

MASTERPLAN

West Central 1

13-storey building set around a landscaped courtyard, offering 151 stylish homes in studio, one, two and three-bedroom apartments.

Folio Gardens

140 private homes across three buildings, from studio to three-bedroom residences all with balcony, winter garden or terrace spaces.

Plus new public realm surrounded by over 9,000 sq ft of retail and commercial spaces.

Signature Place

Two striking buildings around a richly planted courtyard, bringing a further 109 elegant, contemporary homes and home to the luxury Wellness Centre.

Monograph Square

Monograph Square, crafted by four internationally renowned architects, is the final piece in Postmark's ambitious masterplan, providing 137 private residences to complete a collection of 650 stylish homes.

Split across two buildings, Block J provides 24 homes and the collection of Block H buildings will provide a further 113 homes. Both ranging from one to four bedrooms and offering either terraces, or one or two balconies.

Plans

Block J



Master bedroom show home photography

Ground Level



One Bedroom

194 / J1.00.01	
Living / Dining	3.65m x 5.70m
Kitchen	1.80m x 4.67m
Bedroom	3.15m x 5.38m
Terrace	3.05m x 6.98m
Total internal area	53.0m² 570.5 sq ft
Total external area	14.4m² 155.2 sq ft

197 / J1.00.04	
Living / Dining	3.75m x 4.60m
Kitchen	1.80m x 4.71m
Bedroom	3.05m x 6.25m
Terrace	1.40m x 6.25m
Total internal area	51.0m² 549.0 sq ft
Total external area	7.0m² 75.3 sq ft

Two Bedroom

195 / J1.00.02	
Living / Dining	3.60m x 7.87m
Kitchen	1.95m x 3.40m
Bedroom 1	3.10m x 5.70m
Bedroom 2	3.70m x 3.21m
Terrace	3.05m x 7.05m
Total internal area	80.0m² 861.1 sq ft
Total external area	18.5m² 199.3 sq ft

198 / J1.00.05	
Living / Dining	3.66m x 5.88m
Kitchen	2.10m x 4.85m
Bedroom 1	4.90m x 3.05m
Bedroom 2	3.70m x 3.65m
Terrace 1	1.40m x 6.25m
Terrace 2	2.70m x 1.20m
Total internal area	80.0m² 861.1 sq ft
Total external area	9.0m² 96.9 sq ft

Three Bedroom

196 / J1.00.03	
Living / Dining	7.00m x 3.20m
Kitchen	3.20m x 2.20m
Bedroom 1	3.00m x 5.75m
Bedroom 2	3.70m x 3.05m
Bedroom 3	3.75m x 3.60m
Terrace 1	1.40m x 6.20m
Terrace 2	1.40m x 6.20m
Total internal area	107.0m² 1151.7 sq ft
Total external area	12.0m² 129.2 sq ft



KEY

S Storage
U Utility room
W Wardrobe
----- Indicative wardrobe space

J1.01.01

Core no. Floor no. Apartment ref**

*Wheelchair Adaptable apartments
**Apartment ref is the plot number at time of going to press. This may update and is not a form of address.
Apartments have openable windows either side of mullions. Please speak to your sales agent for clarification.



Level 01



One Bedroom

201 / J1.01.03	
Living / Dining	3.65m x 5.70m
Kitchen	1.80m x 4.67m
Bedroom	3.15m x 5.38m
Balcony	1.38m x 3.10m
Total internal area	53.0m² 570.5 sq ft
Total external area	4.0m ² 43.1 sq ft

202 / J1.01.04	
Living / Dining	3.65m x 5.70m
Kitchen	1.80m x 4.67m
Bedroom	3.15m x 5.38m
Balcony	1.38m x 3.10m
Total internal area	53.0m² 570.5 sq ft
Total external area	4.0m ² 43.1 sq ft

204 / J1.01.06	
Living / Dining	3.88m x 5.28m
Kitchen	1.96m x 3.50m
Bedroom	3.05m x 6.25m
Balcony	1.40m x 6.25m
Total internal area	51.0m² 549.0 sq ft
Total external area	7m ² 75.3 sq ft

205 / J1.01.07	
Living / Dining	3.75m x 4.60m
Kitchen	1.80m x 4.71m
Bedroom	3.05m x 6.25m
Balcony	1.40m x 6.25m
Total internal area	50.0m² 538.2 sq ft
Total external area	7.0m ² 75.3 sq ft

206 / J1.01.08	
Living / Dining	3.75m x 4.60m
Kitchen	1.80m x 4.71m
Bedroom	3.05m x 5.70m
Balcony	1.40m x 6.25m
Total internal area	51.0m² 549.0 sq ft
Total external area	7.0m ² 75.3 sq ft

207 / J1.01.09	
Living / Dining	3.75m x 4.60m
Kitchen	1.80m x 4.71m
Bedroom	3.05m x 5.70m
Balcony	1.40m x 6.25m
Total internal area	51.0m² 549.0 sq ft
Total external area	7.0m ² 75.3 sq ft

Two Bedroom

200 / J1.01.02	
Living / Dining	2.90m x 7.87m
Kitchen	1.95m x 3.40m
Bedroom 1	3.00m x 5.70m
Bedroom 2	3.70m x 3.21m
Balcony	1.38m x 5.85m
Total internal area	76.0m² 818.1 sq ft
Total external area	7.0m ² 75.3 sq ft

203 / J1.01.05	
Living / Dining	3.60m x 7.87m
Kitchen	1.95m x 3.40m
Bedroom 1	3.10m x 5.70m
Bedroom 2	3.70m x 3.21m
Balcony	1.22m x 6.30m
Total internal area	80.0m² 861.1 sq ft
Total external area	9.0m ² 96.9 sq ft

208 / J1.01.10	
Living / Dining	3.86m x 6.04m
Kitchen	5.00m x 2.10m
Bedroom 1	3.10m x 4.90m
Bedroom 2	3.65m x 4.30m
Balcony 1	1.40m x 6.25m
Balcony 2	2.70m x 1.20m
Total internal area	79.5m² 855.7 sq ft
Total external area	10.0m ² 107.6 sq ft

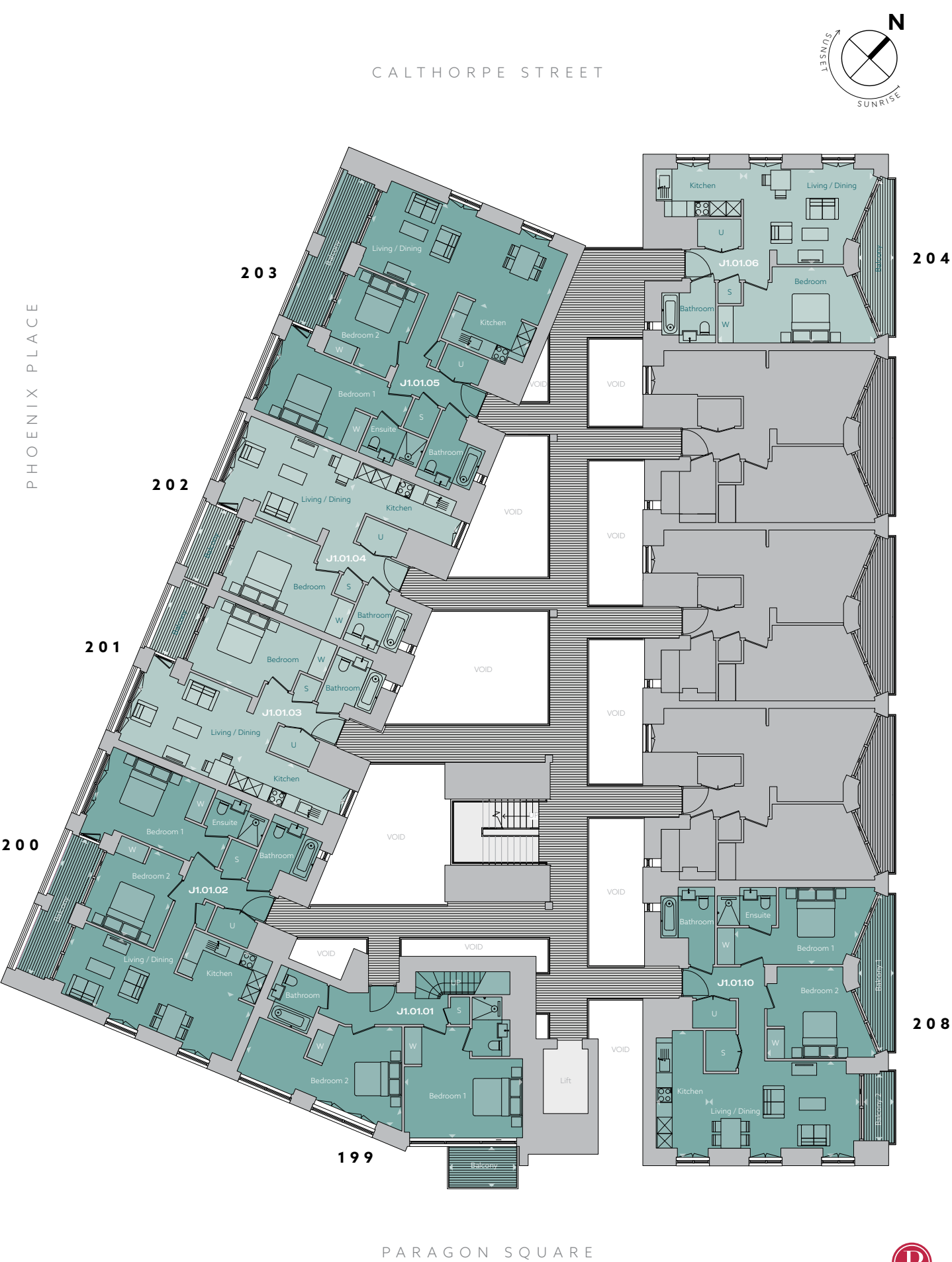
Two Bedroom Duplex

199 / J1.01.01	
Living / Dining	4.25m x 4.70m
Kitchen	9.17m x 4.55m
Bedroom 1	4.7m x 4.50m
Bedroom 2	6.70m x 4.00m
Balcony 1	1.60m x 2.70m
Balcony 2	1.60m x 2.70m
Total internal area	115.0m² 1237.8 sq ft
Total external area	8.0m ² 86.1 sq ft



KEY		
S	Storage	J1.01.01 Core no. Floor no. Apartment ref**
U	Utility room	
W	Wardrobe	
-----	Indicative wardrobe space	

*Wheelchair Adaptable apartments
**Apartment ref is the plot number at time of going to press. This may update and is not a form of address.
Apartments have openable windows either side of mullions. Please speak to your sales agent for clarification.



Level 02



One Bedroom

210 / J1.02.02	
Living / Dining	3.65m x 5.70m
Kitchen	1.80m x 4.67m
Bedroom	3.15m x 5.38m
Balcony	1.38m x 3.10m
Total internal area	53.0m² 570.5 sq ft
Total external area	4.0m² 43.1 sq ft

211 / J1.02.03	
Living / Dining	3.65m x 5.70m
Kitchen	1.80m x 4.67m
Bedroom	3.15m x 5.38m
Balcony	1.38m x 3.10m
Total internal area	53.0m² 570.5 sq ft
Total external area	4.0m² 43.1 sq ft

213 / J1.02.05	
Living / Dining	3.88m x 5.28m
Kitchen	1.96m x 3.50m
Bedroom	3.05m x 6.25m
Balcony	1.40m x 6.25m
Total internal area	51.0m² 549.0 sq ft
Total external area	7m² 75.3 sq ft

214 / J1.02.06	
Living / Dining	3.75m x 4.60m
Kitchen	1.80m x 4.71m
Bedroom	3.05m x 6.25m
Balcony	1.40m x 6.25m
Total internal area	51.0m² 549.0 sq ft
Total external area	7.0m² 75.3 sq ft

215 / J1.02.07	
Living / Dining	3.75m x 4.60m
Kitchen	1.80m x 4.71m
Bedroom	3.05m x 5.70m
Balcony	1.40m x 6.25m
Total internal area	51.0m² 549.0 sq ft
Total external area	7.0m² 75.3 sq ft

216 / J1.02.08	
Living / Dining	3.75m x 4.60m
Kitchen	1.80m x 4.71m
Bedroom	3.05m x 5.70m
Balcony	1.40m x 6.25m
Total internal area	51.0m² 549.0 sq ft
Total external area	7.0m² 75.3 sq ft

Two Bedroom

209 / J1.02.01	
Living / Dining	2.90m x 7.87m
Kitchen	1.95m x 3.40m
Bedroom 1	3.00m x 5.70m
Bedroom 2	3.70m x 3.21m
Balcony 1	1.38m x 5.85m
Total internal area	76.0m² 818.1 sq ft
Total external area	7.0m² 75.3 sq ft

212 / J1.02.04	
Living / Dining	3.60m x 7.87m
Kitchen	1.95m x 3.40m
Bedroom 1	3.10m x 5.70m
Bedroom 2	3.70m x 3.21m
Balcony	1.22m x 6.30m
Total internal area	80.0m² 861.1 sq ft
Total external area	9.0m² 96.9 sq ft

217 / J1.02.09	
Living / Dining	3.86m x 6.04m
Kitchen	5.00m x 2.10m
Bedroom 1	4.90m x 3.10m
Bedroom 2	3.65m x 4.30m
Balcony 1	1.40m x 6.25m
Balcony 2	2.70m x 1.20m
Total internal area	79.5m² 855.7 sq ft
Total external area	10.0m² 107.6 sq ft

Two Bedroom Duplex

199 / J1.01.01	
Living / Dining	4.25m x 4.70m
Kitchen	9.17m x 4.55m
Bedroom 1	4.7m x 4.50m
Bedroom 2	6.70m x 4.00m
Balcony 1	1.60m x 2.70m
Balcony 2	1.60m x 2.70m
Total internal area	115.0m² 1237.8 sq ft
Total external area	8.0m² 86.1 sq ft



KEY	
S	Storage
U	Utility room
W	Wardrobe
-----	Indicative wardrobe space

J1.01.01		
Core no.	Floor no.	Apartment ref**

*Wheelchair Adaptable apartments
**Apartment ref is the plot number at time of going to press.
This may update and is not a form of address.
Apartments have openable windows either side of mullions
Please speak to your sales agent for clarification.



Level 03



One Bedroom

219 / J1.03.02	
Living / Dining	3.65m x 5.70m
Kitchen	1.80m x 4.67m
Bedroom	3.15m x 5.38m
Balcony	1.38m x 3.10m
Total internal area	53.0m² 570.5 sq ft
Total external area	4.0m² 43.1 sq ft

220 / J1.03.03	
Living / Dining	3.65m x 5.70m
Kitchen	1.80m x 4.67m
Bedroom	3.15m x 5.38m
Balcony	1.38m x 3.10m
Total internal area	53.0m² 570.5 sq ft
Total external area	4.0m² 43.1 sq ft

222 / J1.03.05	
Living / Dining	8.82m x 5.28m
Kitchen	1.96m x 3.50m
Bedroom	3.05m x 6.25m
Balcony	1.40m x 6.25m
Total internal area	51.0m² 549.0 sq ft
Total external area	7m² 75.3 sq ft

223 / J1.03.06	
Living / Dining	3.75m x 4.60m
Kitchen	1.80m x 4.71m
Bedroom	3.05m x 6.25m
Balcony	1.40m x 6.25m
Total internal area	51.0m² 549.0 sq ft
Total external area	7.0m² 75.3 sq ft

224 / J1.03.07	
Living / Dining	3.75m x 4.60m
Kitchen	1.80m x 4.71m
Bedroom	3.05m x 5.70m
Balcony	1.40m x 6.25m
Total internal area	51.0m² 549.0 sq ft
Total external area	7.0m² 75.3 sq ft

225 / J1.03.08	
Living / Dining	3.75m x 4.60m
Kitchen	1.80m x 4.71m
Bedroom	3.05m x 5.70m
Balcony	1.40m x 6.25m
Total internal area	51.0m² 549.0 sq ft
Total external area	7.0m² 75.3 sq ft

Two Bedroom

218 / J1.03.01	
Living / Dining	2.90m x 7.87m
Kitchen	1.95m x 3.40m
Bedroom 1	3.00m x 5.70m
Bedroom 2	3.70m x 3.21m
Balcony 1	1.38m x 5.85m
Total internal area	76.0m² 818.1 sq ft
Total external area	7.0m² 75.3 sq ft

221 / J1.03.04	
Living / Dining	3.60m x 7.87m
Kitchen	1.95m x 3.40m
Bedroom 1	3.10m x 5.70m
Bedroom 2	3.70m x 3.21m
Balcony	1.22m x 6.30m
Total internal area	80.0m² 861.1 sq ft
Total external area	9.0m² 96.9 sq ft

226 / J1.03.09	
Living / Dining	3.86m x 6.04m
Kitchen	5.00m x 2.10m
Bedroom 1	4.90m x 3.10m
Bedroom 2	3.65m x 4.30m
Balcony 1	1.40m x 6.25m
Balcony 2	2.70m x 1.20m
Total internal area	79.5m² 855.7 sq ft
Total external area	10.0m² 107.6 sq ft



KEY	
S	Storage
U	Utility room
W	Wardrobe
-----	Indicative wardrobe space
J1.01.01	
Core no.	Floor no.
	Apartment ref**

*Wheelchair Adaptable apartments
**Apartment ref is the plot number at time of going to press.
This may update and is not a form of address.
Apartments have openable windows either side of mullions
Please speak to your sales agent for clarification.



Plans

Block H



Living room show home photography

One Bedroom

283 / H3.00.02		
Living / Dining	4.15m x 5.35m	
Kitchen	3.45m x 2.40m	
Bedroom	4.75m x 3.30m	
Terrace	2.10m x 8.10m	
Total internal area	59.0m² 635.1 sq ft	
Total external area	17.0m² 183 sq ft	

325 / H5.00.03		
Living / Dining	4.75m x 5.10m	
Kitchen	2.00m x 3.95m	
Bedroom	3.90m x 4.15m	
Terrace	6.75m x 2.45m	
Total internal area	68.0m² 731.9 sq ft	
Total external area	15.0m² 161.5 sq ft	

Two Bedroom

227 / H1.00.01		
Living / Dining	5.20m x 4.15m	
Kitchen	3.65m x 2.60m	
Bedroom 1	2.80m x 4.90m	
Bedroom 2	3.25m x 3.60m	
Terrace	11.25m x 2.55m	
Total internal area	78.0m² 839.6 sq ft	
Total external area	27.0m² 290.6 sq ft	

282 / H3.00.01		
Living / Dining	4.0m x 4.20m	
Kitchen	3.0m x 2.95m	
Bedroom 1	7.0m x 3.30m	
Bedroom 2	3.65m x 3.90m	
Terrace	2.10m x 8.10m	
Total internal area	84.0m² 904.2 sq ft	
Total external area	17.0m² 183.0 sq ft	

303 / H4.00.01		
Living / Dining	4.85m x 4.25m	
Kitchen	2.15m x 3.0m	
Bedroom 1	4.55m x 3.15m	
Bedroom 2	3.70m x 2.85m	
Terrace	2.10m x 9.90m	
Total internal area	73.0m² 785.8 sq ft	
Total external area	20.0m² 215.3 sq ft	

304 / H4.00.02		
Living / Dining	4.0m x 4.20m	
Kitchen	3.0m x 2.95m	
Bedroom 1	7.0m x 3.30m	
Bedroom 2	3.65m x 3.90m	
Terrace	2.10m x 8.10m	
Total internal area	84.0m² 904.2 sq ft	
Total external area	17.0m² 183.0 sq ft	

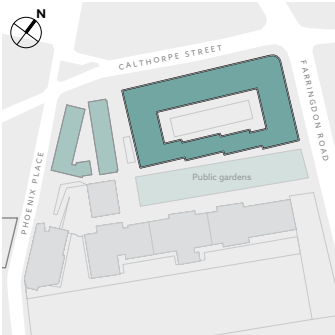
323 / H5.00.01		
Living / Dining	4.0m x 5.65m	
Kitchen	1.65m x 3.50m	
Bedroom 1	3.40m x 3.35m	
Bedroom 2	3.20m x 3.35m	
Winter Garden	3.65m x 2.25m	
Total internal area	62.0m² 667.4 sq ft	
Total external area	5.0m² 53.8 sq.ft	

324 / H5.00.02		
Living / Dining	5.65m x 4.0m	
Kitchen	3.50m x 1.65m	
Bedroom 1	3.35m x 3.40m	
Bedroom 2	3.35m x 3.15m	
Winter Garden	2.25m x 3.65m	
Total internal area	62.0m² 667.4 sq ft	
Total external area	5.0m² 53.8 sq ft	

Four Bedroom

353 / H7.00.01		
Living / Dining	4.60m x 5.85m	
Kitchen	3.35m x 2.60m	
Bedroom 1	3.35m x 4.20m	
Bedroom 2	3.85m x 3.20m	
Bedroom 3	3.85m x 3.90m	
Bedroom 4	3.35m x 2.75m	
Terrace	1.45m x 16.0m	
Total internal area	107.0m² 1151.7 sq ft	
Total external area	23.0m² 247.6 sq ft	

354 / H7.00.02		
Living / Dining	4.60m x 6.0m	
Kitchen	4.05m x 2.40m	
Bedroom 1	3.45m x 4.30m	
Bedroom 2	3.75m x 3.45m	
Bedroom 3	3.75m x 3.95m	
Bedroom 4	3.45m x 2.75m	
Terrace	1.45m x 16.0m	
Total internal area	110.0m² 1184.0 sq ft	
Total external area	23.0m² 247.6 sq ft	



H1.01.01

Core no.

Floor no.

Apartment ref**

KEY

S

Storage

U

Utility room

W

Wardrobe

Indicative wardrobe space

*Wheelchair Adaptable apartments

**Apartment ref is the plot number at time of going to press. This may update and is not a form of address.

Apartments have openable windows either side of mullions. Please speak to your sales agent for clarification.

Ground Level





One Bedroom

284 / H3.01.01		
Living / Dining	4.00m x 3.95m	
Kitchen	3.20m x 2.05m	
Bedroom	3.65m x 3.90m	
Balcony	1.90m x 3.55m	
Total internal area	56.0m² 602.8 sq ft	
Total external area	7.0m² 75.3 sq ft	

285 / H3.01.02		
Living / Dining	4.50m x 3.90m	
Kitchen	2.50m x 2.65m	
Bedroom	4.50m x 2.85m	
Balcony	1.90m x 3.05m	
Total internal area	51.0m² 549.0 sq ft	
Total external area	6.0m² 64.6 sq ft	

306 / H4.01.02		
Living / Dining	4.50m x 3.90m	
Kitchen	2.50m x 2.60m	
Bedroom	4.50m x 2.85m	
Balcony	1.90m x 3.05m	
Total internal area	51.0m² 549.0 sq ft	
Total external area	6.0m² 64.6 sq ft	

307 / H4.01.03		
Living / Dining	4.00m x 3.95m	
Kitchen	3.20m x 2.05m	
Bedroom	3.65m x 3.90m	
Balcony	1.90m x 3.55m	
Total internal area	56.0m² 602.8 sq ft	
Total external area	7.0m² 75.3 sq ft	

326 / H5.01.01		
Living / Dining	3.20m x 3.70m	
Kitchen	3.20m x 3.00m	
Bedroom	3.40m x 3.35m	
Balcony	2.25m x 1.80m	
Total internal area	50.0m² 538.2 sq ft	
Total external area	4.0m² 43.1 sq ft	

327 / H5.01.02		
Living / Dining	4.70m x 4.95m	
Kitchen	2.95m x 3.40m	
Bedroom	3.75m x 3.35m	
Winter Garden	3.65m x 2.25m	
Total internal area	55.0m² 592.0 sq ft	
Total external area	6.0m² 64.6 sq ft	

329 / H5.01.04*		
Living / Dining	3.20m x 4.90m	
Kitchen	3.65m x 3.45m	
Bedroom	4.85m x 3.90m	
Balcony	2.65m x 2.25m	
Total internal area	72.0m² 775.0 sq ft	
Total external area	3.0m² 32.3 sq ft	

355 / H7.01.01		
Living / Dining	3.60m x 5.20m	
Kitchen	3.60m x 2.00m	
Bedroom	3.45m x 3.30m	
Balcony 1	1.50m x 2.45m	
Balcony 2	1.50m x 2.45m	
Balcony 3	1.50m x 2.45m	
Total internal area	51.0m² 549.0 sq ft	
Total external area	12.0m² 129.2 sq ft	

356 / H7.01.02		
Living / Dining	4.55m x 4.75m	
Kitchen	3.25m x 2.15m	
Bedroom	3.60m x 3.60m	
Balcony	1.50m x 2.45m	
Total internal area	54.0m² 581.3 sq ft	
Total external area	4.0m² 43.1 sq ft	

357 / H7.01.03		
Living / Dining	4.75m x 4.95m	
Kitchen	3.25m x 2.15m	
Bedroom	3.40m x 3.50m	
Balcony	1.50m x 2.45m	
Total internal area	54.0m² 581.3 sq ft	
Total external area	4.0m² 43.1 sq ft	

358 / H7.01.04		
Living / Dining	4.15m x 5.05m	
Kitchen	4.20m x 2.00m	
Bedroom	3.20m x 3.20m	
Balcony 1	1.50m x 2.40m	
Balcony 2	1.50m x 2.45m	
Balcony 3	1.50m x 2.45m	
Total internal area	51.0m² 549.0 sq ft	
Total external area	12.0m² 129.2 sq ft	

Two Bedroom

228 / H1.01.01		
Living / Dining	3.65m x 4.80m	
Kitchen	1.90m x 4.50m	
Bedroom 1	3.55m x 3.50m	
Bedroom 2	3.25m x 4.20m	
Balcony 1	1.50m x 2.45m	
Balcony 2	1.50m x 2.45m	
Total internal area	75.0m² 807.3 sq ft	
Total external area	8.0m² 86.1 sq ft	

229 / H1.01.02		
Living / Dining	3.50m x 5.00m	
Kitchen	3.50m x 1.95m	
Bedroom 1	2.85m x 4.70m	
Bedroom 2	3.50m x 3.00m	
Balcony	3.05m x 1.90m	
Total internal area	72.0m² 775.0 sq ft	
Total external area	6.0m² 64.6 sq ft	

230 / H1.01.03		
Living / Dining	4.10m x 5.05m	
Kitchen	2.85m x 2.30m	
Bedroom 1	3.70m x 5.10m	
Bedroom 2	2.75m x 4.65m	
Balcony	3.05m x 1.90m	
Total internal area	79.0m² 850.3 sq ft	
Total external area	6.0m² 64.6 sq ft	

286 / H3.01.03		
Living / Dining	4.75m x 4.25m	
Kitchen	2.45m x 2.20m	
Bedroom 1	7.20m x 2.70m	
Bedroom 2	3.35m x 4.45m	
Balcony	1.90m x 3.05m	
Total internal area	85.0m² 914.9 sq ft	
Total external area	6.0m² 64.6 sq ft	

305 / H4.01.01		
Living / Dining	4.75m x 4.20m	
Kitchen	2.45m x 2.20m	
Bedroom 1	7.25m x 2.75m	
Bedroom 2	3.35m x 4.45m	
Balcony	1.90m x 3.05m	
Total internal area	85.0m² 914.9 sq ft	
Total external area	6.0m² 64.6 sq ft	

328 / H5.01.03		
Living / Dining	5.65m x 6.25m	
Kitchen	3.40m x 2.20m	
Bedroom 1	5.85m x 3.35m	
Bedroom 2	3.60m x 4.30m	
Winter Garden	2.25m x 3.65m	
Total internal area	93.0m² 1001.0 sq ft	
Total external area	6.0m² 64.6 sq ft	

344 / H6.01.01		
Living / Dining	4.05m x 4.20m	
Kitchen	2.00m x 2.65m	
Bedroom 1	3.30m x 3.90m	
Bedroom 2	2.75m x 3.95m	
Balcony 1	1.50m x 2.45m	
Balcony 2	1.50m x 2.45m	
Total internal area	68.0m² 731.9 sq ft	
Total external area	8.0m² 86.1 sq ft	

345 / H6.01.02		
Living / Dining	5.20m x 3.55m	
Kitchen	2.00m x 4.60m	
Bedroom 1	4.60m x 3.50m	
Bedroom 2	3.35m x 3.30m	
Balcony	1.80m x 3.40m	
Total internal area	83.5m² 898.8 sq ft	
Total external area	7.0m² 75.3 sq ft	

346 / H6.01.03		
Living / Dining	2.70m x 6.75m	
Study	2.25m x 4.40m	
Kitchen	0.70m x 5.05m	
Bedroom 1	3.70m x 5.00m	
Bedroom 2	3.25m x 3.60m	
Balcony 1	3.55m x 1.90m	
Balcony 2	2.25m x 1.80m	
Total internal area	82.0m² 882.6 sq ft	
Total external area	11.0m² 118.4 sq ft	

Level



*Wheelchair Adaptable apartments
**Apartment ref is the plot number at time of going to press.
This may update and is not a form of address.
Apartments have openable windows either side of mullions
Please speak to your sales agent for clarification.





One Bedroom

333 / H5.02.04	
Living / Dining	4.20m x 3.80m
Kitchen	2.60m x 2.45m
Bedroom	3.35m x 4.15m
Balcony	2.65m x 2.25m
Total internal area	53.0m² 570.5 sq ft
Total external area	6.0m² 64.6 sq ft

359 / H7.02.01	
Living / Dining	3.60m x 6.70m
Kitchen	2.60m x 2.35m
Bedroom	3.30m x 3.20m
Balcony	1.75m x 2.25m
Total internal area	55.0m² 592.0 sq ft
Total external area	4.0m² 43.1 sq ft

362 / H7.02.04	
Living / Dining	4.25m x 7.10m
Kitchen	3.80m x 2.35m
Bedroom	3.05m x 3.85m
Balcony	1.75m x 2.25m
Total internal area	58.0m² 624.3 sq ft
Total external area	4.0m² 43.1 sq ft

Two Bedroom

231 / H1.02.01	
Living / Dining	5.05m x 4.45m
Kitchen	3.65m x 3.25m
Bedroom 1	5.65m x 3.30m
Bedroom 2	4.40m x 3.15m
Balcony	1.55m x 3.50m
Total internal area	89.0m² 958.0 sq ft
Total external area	4.5m² 48.4 sq ft

232 / H1.02.02	
Living / Dining	3.85m x 7.10m
Kitchen	1.90m x 6.30m
Bedroom 1	3.70m x 6.30m
Bedroom 2	3.75m x 3.30m
Balcony 1	1.75m x 2.25m
Balcony 2	0.90m x 2.25m
Total internal area	89.0m² 958.0 sq ft
Total external area	6.0m² 64.6 sq ft

233 / H1.02.03	
Living / Dining	5.05m x 3.90m
Kitchen	2.55m x 3.05m
Bedroom 1	2.80m x 5.50m
Bedroom 2	3.15m x 3.90m
Balcony	3.05m x 1.90m
Total internal area	78.0m² 839.6 sq ft
Total external area	6.0m² 64.6 sq ft

234 / H1.02.04	
Living / Dining	4.50m x 5.20m
Kitchen	2.90m x 2.05m
Bedroom 1	2.90m x 5.10m
Bedroom 2	3.95m x 2.80m
Balcony 1	3.05m x 1.90m
Balcony 2	2.25m x 0.90m
Total internal area	80.0m² 861.1 sq ft
Total external area	8.0m² 86.1 sq ft

287 / H3.02.01	
Living / Dining	7.15m x 4.30m
Kitchen	3.10m x 2.95m
Bedroom 1	4.40m x 3.45m
Bedroom 2	3.30m x 3.30m
Balcony 1	1.85m x 3.05m
Balcony 2	0.90m x 2.25m
Total internal area	80.0m² 861.1 sq ft
Total external area	8.0m² 86.1 sq ft

288 / H3.02.02	
Living / Dining	4.75m x 5.50m
Kitchen	2.25m x 3.20m
Bedroom 1	5.35m x 3.00m
Bedroom 2	3.75m x 3.25m
Balcony	1.85m x 3.55m
Total internal area	83.0m² 893.4 sq ft
Total external area	6.5m² 70.0 sq ft

289 / H3.02.03	
Living / Dining	4.50m x 4.25m
Kitchen	2.50m x 2.95m
Bedroom 1	4.50m x 3.55m
Bedroom 2	3.45m x 3.30m
Balcony 1	1.85m x 3.05m
Balcony 2	0.90m x 2.25m
Total internal area	80.0m² 861.1 sq ft
Total external area	6.0m² 64.6 sq ft

308 / H4.02.01	
Living / Dining	4.50m x 4.25m
Kitchen	2.50m x 2.95m
Bedroom 1	4.50m x 3.55m
Bedroom 2	3.45m x 3.30m
Balcony 1	1.85m x 3.05m
Balcony 2	0.90m x 2.25m
Total internal area	80.0m² 861.1 sq ft
Total external area	8.0m² 86.1 sq ft

309 / H4.02.02	
Living / Dining	4.75m x 5.50m
Kitchen	2.25m x 3.20m
Bedroom 1	5.35m x 3.05m
Bedroom 2	3.75m x 3.25m
Balcony	1.85m x 3.50m
Total internal area	83.0m² 893.4 sq ft
Total external area	7.0m² 75.3 sq ft

310 / H4.02.03	
Living / Dining	3.90m x 4.30m
Kitchen	3.20m x 2.95m
Bedroom 1	4.40m x 3.45m
Bedroom 2	3.30m x 3.30m
Balcony 1	1.85m x 3.05m
Balcony 2	0.90m x 2.25m
Total internal area	80.0m² 861.1 sq ft
Total external area	8.0m² 86.1 sq ft

330 / H5.02.01	
Living / Dining	3.95m x 6.85m
Kitchen	2.65m x 2.55m
Bedroom 1	3.30m x 2.95m
Bedroom 2	3.45m x 3.50m
Balcony 1	3.60m x 1.60m
Balcony 2	2.25m x 0.90m
Total internal area	86.0m² 925.7 sq ft
Total external area	7.0m² 75.3 sq ft

331 / H5.02.02	
Living / Dining	4.75m x 5.65m
Kitchen	2.80m x 3.75m
Bedroom 1	4.95m x 3.40m
Bedroom 2	3.95m x 3.35m
Winter Garden	2.80m x 5.50m
Total internal area	88.0m² 947.2 sq ft
Total external area	12.0m² 129.2 sq ft

332 / H5.02.03	
Living / Dining	6.60m x 3.95m
Kitchen	2.25m x 3.10m
Bedroom 1	4.10m x 3.25m
Bedroom 2	3.50m x 3.45m
Balcony 1	1.70m x 3.60m
Balcony 2	0.90m x 2.25m
Total internal area	88.0m² 947.2 sq ft
Total external area	7.0m² 75.3 sq ft

347 / H6.02.01	
Living / Dining	4.20m x 6.75m
Kitchen	2.55m x 5.50m
Bedroom 1	3.95m x 6.95m
Bedroom 2	3.20m x 4.10m
Balcony 1	1.75m x 2.25m
Balcony 2	0.90m x 2.25m
Total internal area	89.0m² 958.0 sq ft
Total external area	6.0m² 64.6 sq ft

348 / H6.02.02	
Living / Dining	5.20m x 3.55m
Kitchen	2.00m x 4.60m
Bedroom 1	4.60m x 3.50m
Bedroom 2	3.35m x 3.30m
Balcony	1.80m x 3.50m
Total internal area	83.5m² 898.8 sq ft
Total external area	7.0m² 75.3 sq ft

360 / H7.02.02	
Living / Dining	4.20m x 6.75m
Kitchen	1.60m x 5.15m
Bedroom 1	3.05m x 6.55m
Bedroom 2	4.10m x 2.95m
Balcony 1	1.75m x 2.25m
Balcony 2	0.90m x 2.25m
Total internal area	85.0m² 914.9 sq ft
Total external area	6.0m² 64.6 sq ft

361 / H7.02.03	
Living / Dining	3.10m x 6.40m
Kitchen	1.90m x 5.45m
Bedroom 1	3.80m x 5.80m
Bedroom 2	3.30m x 3.40m
Balcony 1	1.75m x 2.25m
Balcony 2	0.90m x 2.25m
Total internal area	85.0m² 914.9 sq ft
Total external area	6.0m² 64.6 sq ft

Three Bedroom

349 / H6.02.03	
Living / Dining	4.65m x 6.70m
Kitchen	2.65m x 3.50m
Bedroom 1	3.25m x 5.70m
Bedroom 2	3.15m x 7.20m
Bedroom 3	3.95m x 4.60m
Balcony 1	4.40m x 1.90m
Balcony 2	2.25m x 0.90m
Total internal area	124.0m² 1334.7 sq ft
Total external area	10.0m² 107.6 sq ft

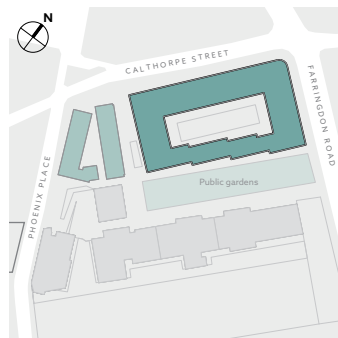
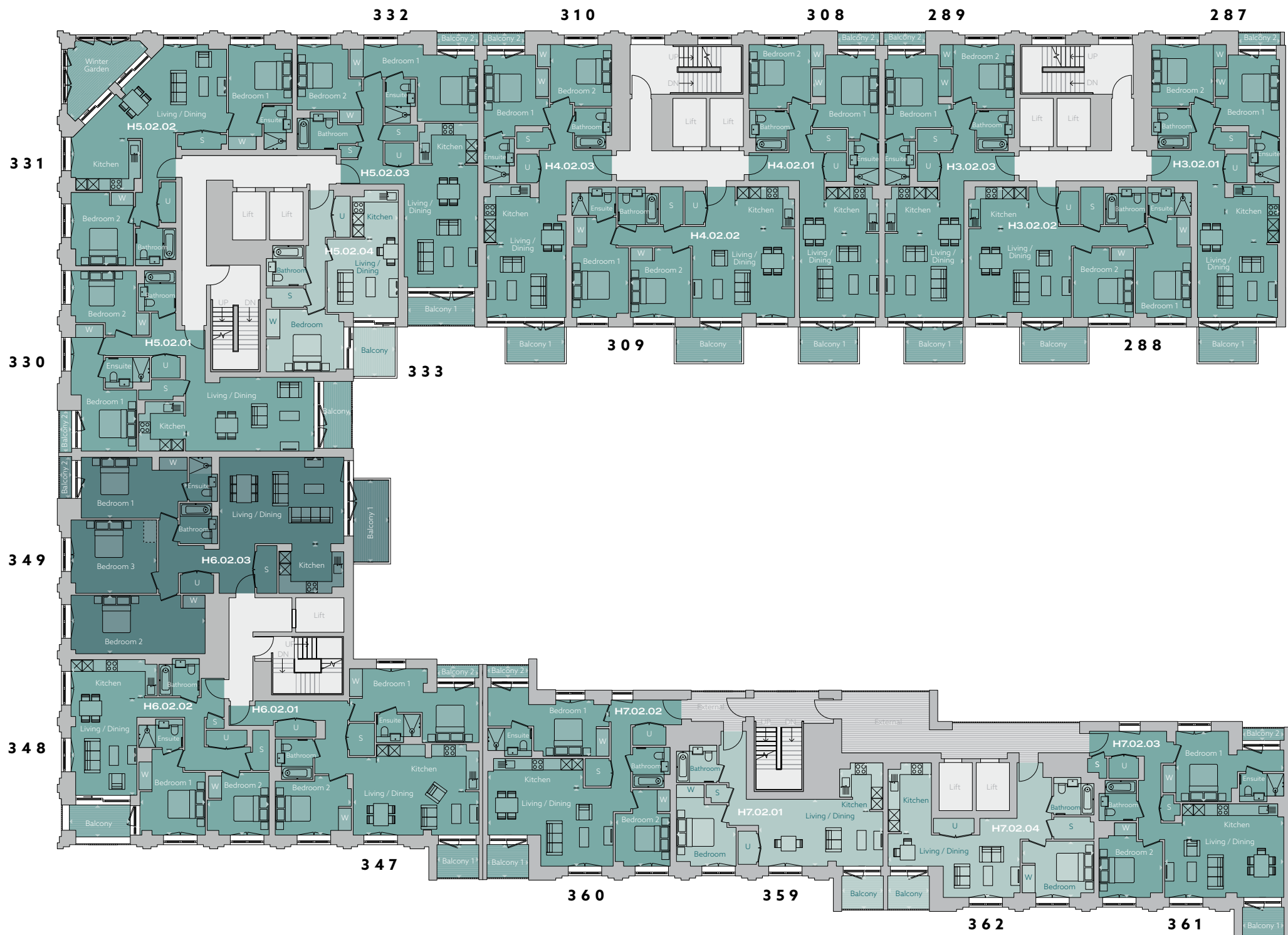
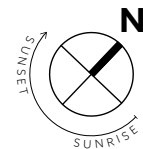
*Wheelchair Adaptable apartments

**Apartment ref is the plot number at time of going to press.
This may update and is not a form of address.

Apartments have openable windows either side of mullions
Please speak to your sales agent for clarification.

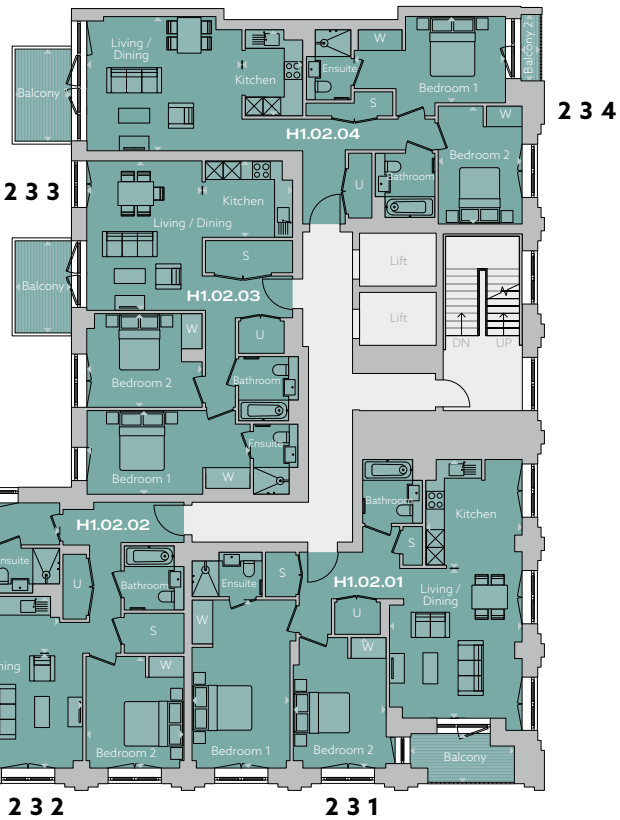
Level





H1.01.01
Core Floor Apartment
no. no. ref**

KEY
S Storage
U Utility room
W Wardrobe
--- Indicative
wardrobe space



One Bedroom

337 / H5.03.04	
Living / Dining	4.20m x 3.80m
Kitchen	2.60m x 2.45m
Bedroom	3.35m x 4.15m
Balcony	2.65m x 2.25m
Total internal area	53.0m² 570.5 sq ft
Total external area	6.0m² 64.6 sq ft

363 / H7.03.01	
Living / Dining	3.60m x 6.75m
Kitchen	3.80m x 2.30m
Bedroom	3.30m x 3.20m
Balcony	1.75m x 2.25m
Total internal area	55.0m² 592.0 sq ft
Total external area	4.0m² 43.1 sq ft

366 / H7.03.04	
Living / Dining	4.25m x 7.10m
Kitchen	3.80m x 2.30m
Bedroom	3.05m x 3.85m
Balcony	1.75m x 2.25m
Total internal area	58.0m² 624.3 sq ft
Total external area	4.0m² 43.1 sq ft

Two Bedroom

235 / H1.03.01	
Living / Dining	5.05m x 4.45m
Kitchen	3.65m x 3.25m
Bedroom 1	5.65m x 3.30m
Bedroom 2	4.40m x 3.15m
Balcony	1.55m x 3.50m
Total internal area	89.0m² 958.0 sq ft
Total external area	4.5m² 48.4 sq ft

236 / H1.03.02	
Living / Dining	4.90m x 7.10m
Kitchen	0.85m x 6.35m
Bedroom 1	3.70m x 6.35m
Bedroom 2	3.75m x 3.30m
Balcony 1	1.75m x 2.25m
Balcony 2	0.90m x 2.25m
Total internal area	89.0m² 958.0 sq ft
Total external area	6.0m² 64.6 sq ft

237 / H1.03.03	
Living / Dining	5.05m x 3.90m
Kitchen	2.55m x 3.05m
Bedroom 1	2.80m x 5.50m
Bedroom 2	3.15m x 3.90m
Balcony	3.05m x 1.90m
Total internal area	78.0m² 839.6 sq ft
Total external area	6.0m² 64.6 sq ft

238 / H1.03.04	
Living / Dining	4.50m x 5.25m
Kitchen	2.90m x 2.05m
Bedroom 1	3.35m x 5.10m
Bedroom 2	3.95m x 2.80m
Balcony 1	3.05m x 1.90m
Balcony 2	2.25m x 0.90m
Total internal area	80.0m² 861.1 sq ft
Total external area	8.0m² 86.1 sq ft

290 / H3.03.01	
Living / Dining	3.90m x 4.30m
Kitchen	3.20m x 2.95m
Bedroom 1	1.90m x 3.05m
Bedroom 2	3.30m x 3.30m
Balcony 1	1.90m x 3.05m
Balcony 2	0.90m x 2.25m
Total internal area	80.0m² 861.1 sq ft
Total external area	8.0m² 86.1 sq ft

291 / H3.03.02	
Living / Dining	4.80m x 5.55m
Kitchen	2.20m x 3.25m
Bedroom 1	5.40m x 3.00m
Bedroom 2	3.75m x 3.25m
Balcony	1.90m x 3.50m
Total internal area	83.0m² 893.4 sq ft
Total external area	7.0 m² 75.3 sq ft

292 / H3.03.03	
Living / Dining	4.50m x 4.20m
Kitchen	2.50m x 2.95m
Bedroom 1	4.50m x 3.55m
Bedroom 2	3.45m x 3.30m
Balcony 1	1.90m x 3.05m
Balcony 2	0.90m x 2.25m
Total internal area	80.0m² 861.1 sq ft
Total external area	8.0m² 86.1 sq ft

311 / H4.03.01	
Living / Dining	4.50m x 4.20m
Kitchen	2.50m x 2.95m
Bedroom 1	4.50m x 3.55m
Bedroom 2	3.10m x 3.30m
Balcony 1	1.90m x 3.05m
Balcony 2	0.90m x 2.25m
Total internal area	80.0m² 861.1 sq ft
Total external area	8.0m² 86.1 sq ft

312 / H4.03.02	
Living / Dining	4.80m x 5.50m
Kitchen	2.20m x 3.25m
Bedroom 1	5.40m x 3.05m
Bedroom 2	3.75m x 3.25m
Balcony	1.90m x 3.50m
Total internal area	83.0m² 893.4 sq ft
Total external area	7.0m² 75.3 sq ft

313 / H4.03.03	
Living / Dining	7.15m x 4.30m
Kitchen	3.10m x 2.80m
Bedroom 1	4.40m x 3.45m
Bedroom 2	3.30m x 3.30m
Balcony 1	1.90m x 3.05m
Balcony 2	0.90m x 2.25m
Total internal area	80.0m² 861.1 sq ft
Total external area	8.0m² 86.1 sq ft

334 / H5.03.01	
Living / Dining	4.00m x 6.90m
Kitchen	2.70m x 2.50m
Bedroom 1	6.10m x 2.95m
Bedroom 2	3.45m x 4.20m
Balcony 1	3.60m x 1.70m
Balcony 2	2.25m x 0.90m
Total internal area	86.0m² 925.7 sq ft
Total external area	7.0m² 75.3 sq ft

335 / H5.03.02	
Living / Dining	4.75m x 5.45m
Kitchen	2.80m x 3.75m
Bedroom 1	4.95m x 3.40m
Bedroom 2	3.95m x 3.35m
Winter Garden	2.80m x 5.50m
Total internal area	88.0m² 947.2 sq ft
Total external area	12.0m² 129.2 sq ft

336 / H5.03.03	
Living / Dining	6.60m x 3.95m
Kitchen	2.25m x 3.15m
Bedroom 1	3.55m x 6.20m
Bedroom 2	3.50m x 3.45m
Balcony 1	1.70m x 3.60m
Balcony 2	0.90m x 2.25m
Total internal area	88.0m² 947.2 sq ft
Total external area	7.0m² 75.3 sq ft

350 / H6.03.01	
Living / Dining	4.20m x 6.75m
Kitchen	2.55m x 5.50m
Bedroom 1	3.95m x 6.95m
Bedroom 2	3.20m x 4.10m
Balcony 1	1.75m x 2.25m
Balcony 2	0.90m x 2.25m
Total internal area	89.0m² 958.0 sq ft
Total external area	6.0m² 64.6 sq ft

351 / H6.03.02	
Living / Dining	5.20m x 3.55m
Kitchen	2.00m x 4.60m
Bedroom 1	4.60m x 3.50m
Bedroom 2	3.35m x 3.30m
Balcony	1.80m x 3.50m
Total internal area	83.5m² 898.8 sq ft
Total external area	7.0m² 75.3 sq ft

364 / H7.03.02	
Living / Dining	4.20m x 6.80m
Kitchen	1.60m x 5.15m
Bedroom 1	3.05m x 6.55m
Bedroom 2	4.10m x 2.95m
Balcony 1	1.75m x 2.25m
Balcony 2	0.90m x 2.25m
Total internal area	85.0m² 914.9 sq ft
Total external area	6.0m² 64.6 sq ft

365 / H7.03.03	
Living / Dining	3.10m x 6.40m
Kitchen	1.90m x 5.45m
Bedroom 1	3.80m x 5.80m
Bedroom 2	3.0m x 3.40m
Balcony 1	1.75m x 2.25m
Balcony 2	0.90m x 2.25m
Total internal area	85.0m² 914.9 sq ft
Total external area	6.0m² 64.6 sq ft

Three Bedroom

352 / H6.03.03	
Living / Dining	4.70m x 6.70m
Kitchen	2.60m x 3.50m
Bedroom 1	3.25m x 5.70m
Bedroom 2	3.95m x 4.60m
Bedroom 3	3.10m x 7.20m
Balcony 1	4.40m x 1.90m
Balcony 2	2.25m x 0.85m
Total internal area	124.0m² 1334.7 sq ft
Total external area	10.0m² 107.6 sq ft

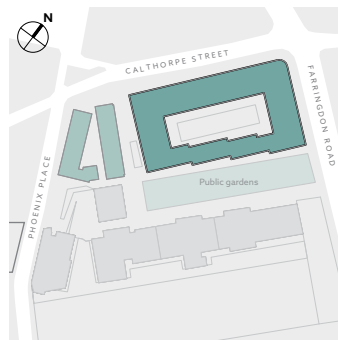
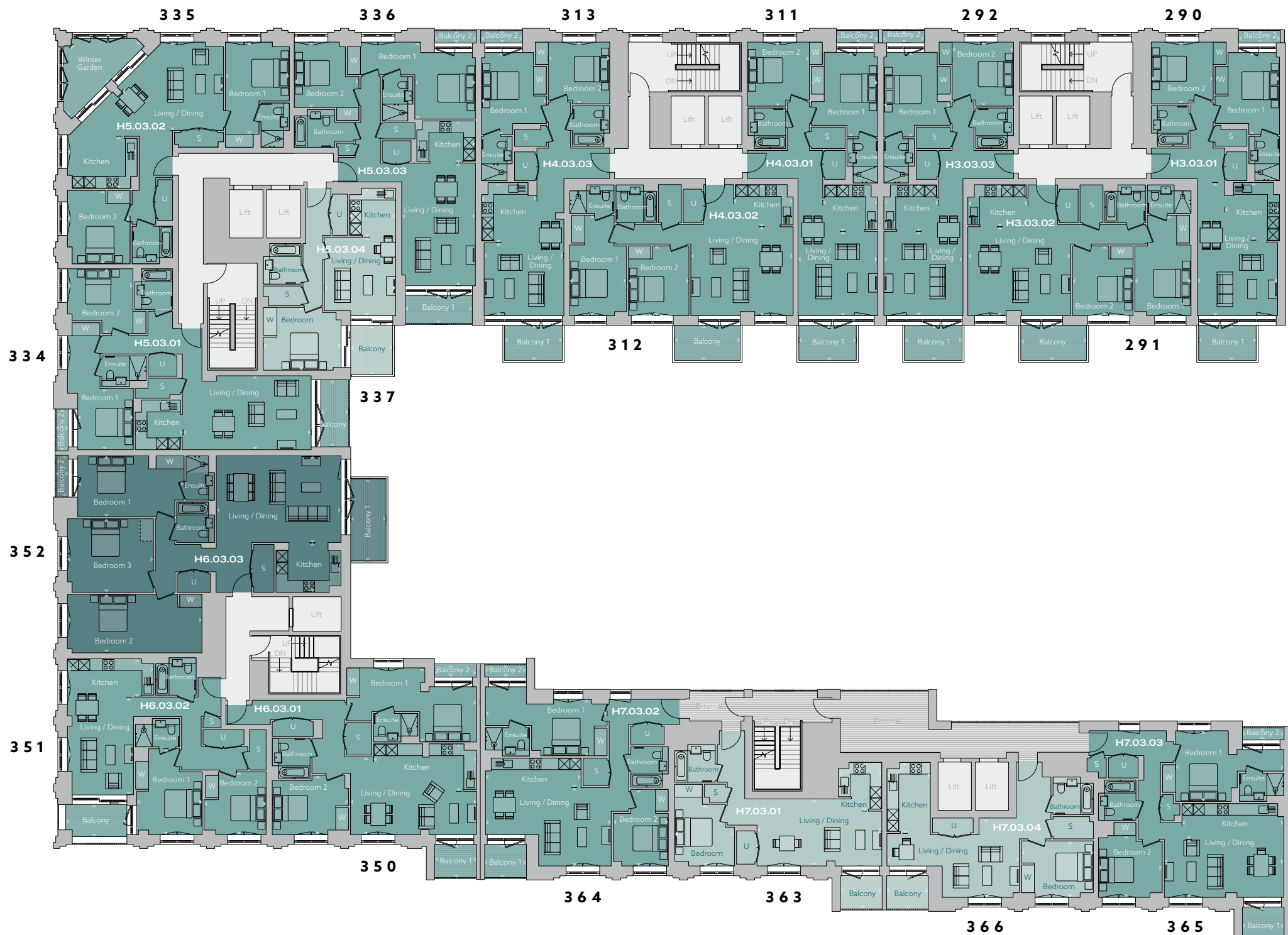
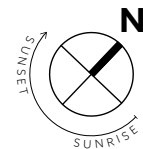
*Wheelchair Adaptable apartments

**Apartment ref is the plot number at time of going to press.
This may update and is not a form of address.

Apartments have openable windows either side of mullions
Please speak to your sales agent for clarification.

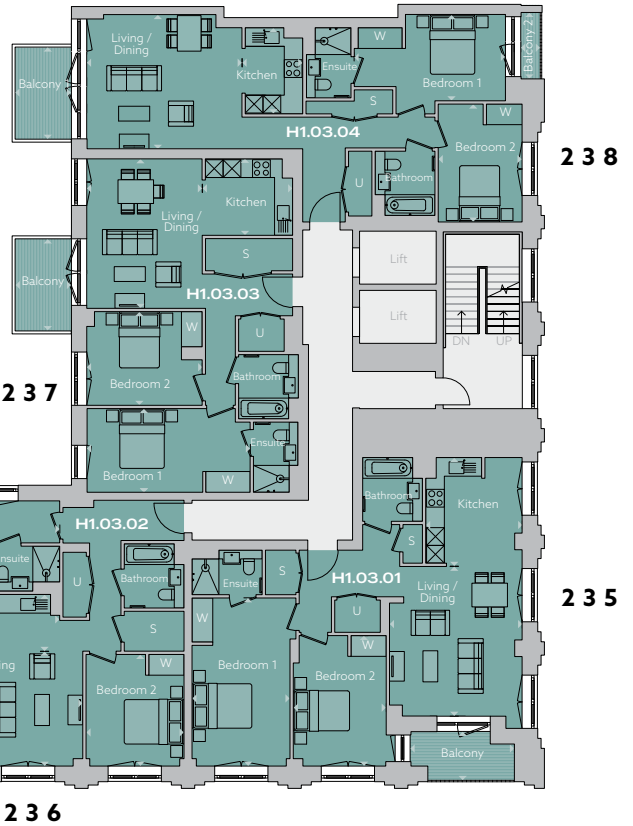
Level





H1.01.01
Core Floor Apartment
no. no. ref**

KEY
S Storage
U Utility room
W Wardrobe
--- Indicative
wardrobe space



One Bedroom

340 / H5.04.03	
Living / Dining	7.15m x 4.15m
Kitchen	4.00m x 2.00m
Bedroom	6.15m x 3.45m
Balcony 1	3.60m x 1.70m
Balcony 2	2.65m x 2.25m
Total internal area	75.0m² 807.3 sq ft
Total external area	11.5m² 123.8 sq ft

369 / H7.04.03	
Living / Dining	4.25m x 7.10m
Kitchen	3.85m x 2.35m
Bedroom	3.05m x 3.95m
Balcony	1.75m x 2.25m
Total internal area	58.0m² 624.3 sq ft
Total external area	4.0m² 43.1 sq ft

Two Bedroom

239 / H1.04.01	
Living / Dining	5.05m x 4.45m
Kitchen	3.65m x 3.25m
Bedroom 1	5.55m x 3.30m
Bedroom 2	4.40m x 3.15m
Balcony	1.55m x 3.50m
Total internal area	89.0m² 958.0 sq ft
Total external area	4.5m² 48.4 sq ft

240 / H1.04.02	
Living / Dining	3.85m x 7.15m
Kitchen	1.90m x 6.35m
Bedroom 1	3.70m x 6.35m
Bedroom 2	3.75m x 3.30m
Balcony 1	1.75m x 2.25m
Balcony 2	0.90m x 2.25m
Total internal area	89.0m² 958.0 sq ft
Total external area	6.0m² 64.6 sq ft

241 / H1.04.03	
Living / Dining	5.05m x 3.90m
Kitchen	2.55m x 3.05m
Bedroom 1	2.80m x 5.50m
Bedroom 2	3.15m x 3.90m
Balcony 1	3.05m x 1.90m
Total internal area	78.0m² 839.6 sq ft
Total external area	6.0m² 64.6 sq ft

242 / H1.04.04	
Living / Dining	4.50m x 5.20m
Kitchen	2.90m x 2.05m
Bedroom 1	3.35m x 5.10m
Bedroom 2	3.95m x 2.80m
Balcony 1	3.05m x 1.90m
Balcony 2	2.25m x 0.90m
Total internal area	80.0m² 861.1 sq ft
Total external area	8.0m² 86.1 sq ft

293 / H3.04.01	
Living /Dining	7.15m x 4.35m
Kitchen	3.20m x 2.95m
Bedroom 1	4.40m x 3.45m
Bedroom 2	3.30m x 3.30m
Balcony 1	2.10m x 3.05m
Balcony 2	0.90m x 2.25m
Total internal area	80.0m² 861.1 sq ft
Total external area	8.0m² 86.1 sq ft

294 / H3.04.02	
Living / Dining	4.80 x 5.50m
Kitchen	2.20m x 3.20m
Bedroom 1	5.40m x 3.00m
Bedroom 2	3.75m x 3.25m
Balcony 1	1.90m x3.50m
Total internal area	83.0m² 893.4 sq ft
Total external area	7.0m² 75.3 sq ft

295 / H3.04.03	
Living / Dining	4.50m x 4.25m
Kitchen	2.50m x 2.95m
Bedroom 1	4.50m x 3.55m
Bedroom 2	3.45m x 3.30m
Balcony 1	2.10m x 3.05m
Balcony 2	0.90m x 2.25m
Total internal area	80.0m² 861.1 sq ft
Total external area	8.0m² 86.1 sq ft

314 / H4.04.01	
Living / Dining	4.50m x 4.25m
Kitchen	2.50m x 2.95m
Bedroom 1	4.50m x 3.55m
Bedroom 2	3.45m x 3.30m
Balcony 1	2.10m x 3.05m
Balcony 2	0.90m x 2.25m
Total internal area	80.0m² 861.1 sq ft
Total external area	7.0m² 75.3 sq ft

315 / H4.04.02	
Living / Dining	4.80m x 5.50m
Kitchen	2.20m x 3.20m
Bedroom 1	5.40m x 3.05m
Bedroom 2	3.75m x 3.25m
Balcony 1	1.90m x 3.50m
Total internal area	83.0m² 893.4 sq ft
Total external area	7.0m² 75.3 sq ft

316 / H4.04.03	
Living / Dining	4.05m x 4.30m
Kitchen	3.10m x 2.85m
Bedroom 1	4.40m x 3.45m
Bedroom 2	3.30m x 3.30m
Balcony 1	2.10m x 3.05m
Balcony 2	0.90m x 2.25m
Total internal area	80.0m² 861.1 sq ft
Total external area	8.0m² 86.1 sq ft

339 / H5.04.02	
Living / Dining	6.60m x 4.00m
Kitchen	2.25m x 3.10m
Bedroom 1	4.10m x 3.25m
Bedroom 2	3.50m x 3.50m
Balcony 1	1.70m x 3.60m
Balcony 2	0.90m x 2.25m
Total internal area	88.0m² 947.2 sq ft
Total external area	7.0m² 75.3 sq ft

368 / H7.04.02	
Living / Dining	3.10m x 6.40m
Kitchen	1.90m x 5.45m
Bedroom 1	3.80m x 5.80m
Bedroom 2	3.30m x 3.35m
Balcony 1	1.75m x 2.25m
Balcony 2	0.90m x 2.25m
Total internal area	85.0m² 914.9 sq ft
Total external area	6.0m² 64.6 sq ft

Three Bedroom

338 / H5.04.01*	
Living / Dining	5.05m x 5.65m
Kitchen	3.60m x 3.55m
Bedroom 1	3.15m x 3.30m
Bedroom 2	3.65m x 4.00m
Bedroom 3	4.75m x 3.20m
Winter Garden	2.80m x 5.50m
Private Terrace	4.70m x 6.05m
Total internal area	127.0m² 1367.0 sq ft
Total external area	41.0m² 441.3 sq ft

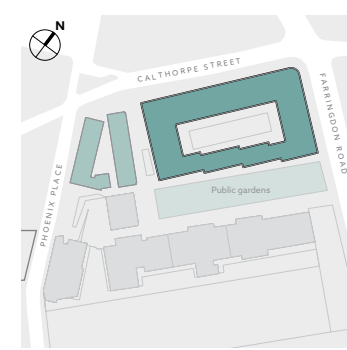
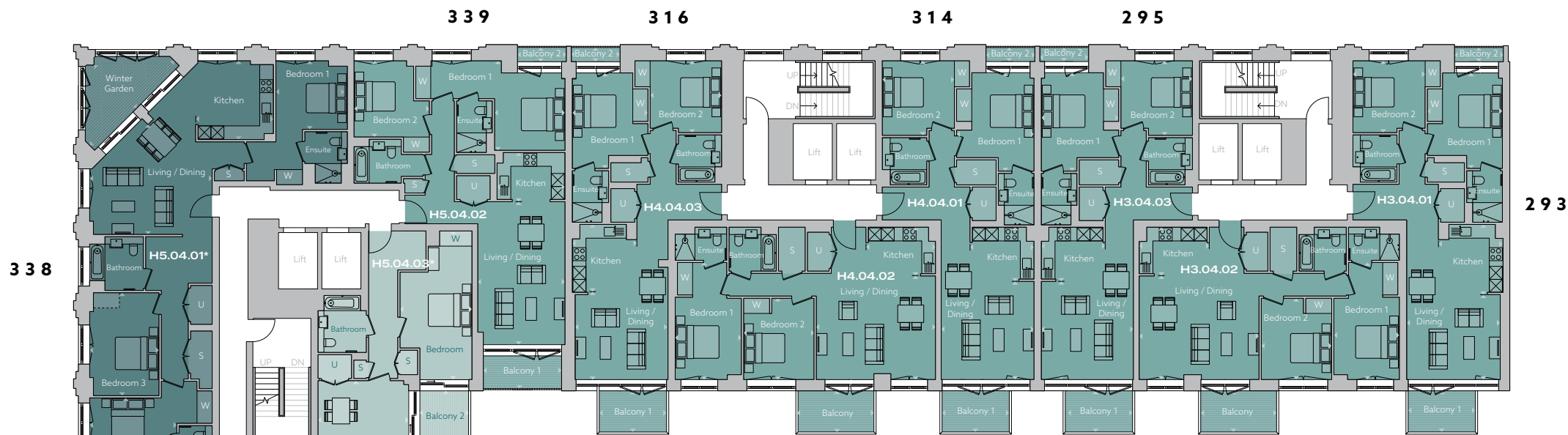
367 / H7.04.01	
Living / Dining	3.90m x 7.15m
Kitchen	2.15m x 3.25m
Bedroom 1	3.60m x 6.45m
Bedroom 2	2.95m x 5.25m
Bedroom 3	3.10m x 4.75m
Balcony 1	1.75m x 2.25m
Private Terrace	11.60m x 4.70m
Total internal area	122.0m² 1313.2 sq ft
Total external area	60.0m² 645.8 sq ft

Level



*Wheelchair Adaptable apartments
**Apartment ref is the plot number at time of going to press.
This may update and is not a form of address.
Apartments have openable windows either side of mullions
Please speak to your sales agent for clarification.





H1.01.01			KEY
Core no.	Floor no.	Apartment ref**	S Storage
			U Utility room
			W Wardrobe
			--- Indicative wardrobe space



One Bedroom

343 / H5.05.03*	
Living / Dining	7.25m x 4.15m
Kitchen	4.00m x 2.00m
Bedroom	6.85m x 3.30m
Balcony 1	3.60m x 1.70m
Balcony 2	2.65m x 2.25m
Total internal area	75.0m² 807.3 sq ft
Total external area	9.0m² 96.9 sq ft

Two Bedroom

243 / H1.05.01	
Living / Dining	5.05m x 4.45m
Kitchen	3.65m x 3.25m
Bedroom 1	5.55m x 3.30m
Bedroom 2	4.40m x 3.15m
Balcony	1.55m x 3.50m
Total internal area	89.0m² 958.0 sq ft
Total external area	4.5m² 48.4 sq ft

244 / H1.05.02	
Living / Dining	3.85m x 7.10m
Kitchen	1.90m x 6.30m
Bedroom 1	3.70m x 6.30m
Bedroom 2	3.75m x 3.30m
Balcony 1	1.75m x 2.25m
Balcony 2	0.90m x 2.25m
Total internal area	89.0m² 958.0 sq ft
Total external area	6.0m² 64.6 sq ft

245 / H1.05.03	
Living / Dining	5.05m x 3.90m
Kitchen	2.55m x 3.05m
Bedroom 1	2.80m x 5.50m
Bedroom 2	3.15m x 3.90m
Balcony	3.05m x 1.90m
Total internal area	78.0m² 839.6 sq ft
Total external area	6.0m² 64.6 sq ft

246 / H1.05.04	
Living / Dining	4.50m x 5.20m
Kitchen	2.90m x 2.05m
Bedroom 1	3.35m x 5.10m
Bedroom 2	3.95m x 2.80m
Balcony 1	3.05m x 1.90m
Balcony 2	2.25m x 0.90m
Total internal area	80.0m² 861.1 sq ft
Total external area	7.0m² 75.3 sq ft

296 / H3.05.01	
Living / Dining	3.90m x 4.30m
Kitchen	3.20m x 2.95m
Bedroom 1	4.40m x 3.45m
Bedroom 2	3.30m x 3.30m
Balcony 1	2.10m x 3.05m
Balcony 2	0.90m x 2.25m
Total internal area	80.0m² 861.1 sq ft
Total external area	8.0m² 86.1 sq ft

297 / H3.05.02	
Living / Dining	4.80m x 5.50m
Kitchen	2.20m x 3.25m
Bedroom 1	5.40m x 3.00m
Bedroom 2	3.75m x 3.25m
Balcony	1.90m x 3.50m
Total internal area	83.0m² 893.4 sq ft
Total external area	7.0m² 75.3 sq ft

298 / H3.05.03	
Living / Dining	4.50m x 4.25m
Kitchen	2.50m x 2.95m
Bedroom 1	4.50m x 3.55m
Bedroom 2	3.45m x 3.30m
Balcony 1	2.10m x 3.05m
Balcony 2	0.90m x 2.25m
Total internal area	80.0m² 861.1 sq ft
Total external area	8.0m² 86.1 sq ft

317 / H4.05.01	
Living / Dining	4.50m x 4.25m
Kitchen	2.50m x 2.95m
Bedroom 1	4.50m x 3.55m
Bedroom 2	3.45m x 3.30m
Balcony 1	2.10m x 3.05m
Balcony 2	0.90m x 2.25m
Total internal area	80.0m² 861.1 sq ft
Total external area	8.0m² 86.1 sq ft

318 / H4.05.02	
Living / Dining	4.80m x 5.50m
Kitchen	2.20m x 3.20m
Bedroom 1	5.40m x 3.05m
Bedroom 2	3.75m x 3.25m
Balcony	1.90m x 3.50m
Total internal area	83.0m² 893.4 sq ft
Total external area	7.0m² 75.3 sq ft

319 / H4.05.03	
Living / Dining	4.05m x 4.30m
Kitchen	3.10m x 2.85m
Bedroom 1	4.40m x 3.45m
Bedroom 2	3.30m x 3.30m
Balcony 1	1.90m x 3.05m
Balcony 2	0.90m x 2.25m
Total internal area	80.0m² 861.1 sq ft
Total external area	8.0m² 86.1 sq ft

342 / H5.05.02	
Living / Dining	6.60m x 4.00m
Kitchen	2.25m x 3.10m
Bedroom 1	4.10m x 3.25m
Bedroom 2	3.50m x 3.45m
Balcony 1	1.70m x 3.60m
Balcony 2	0.90m x 2.25m
Total internal area	88.0m² 947.2 sq ft
Total external area	7.0 m² 75.3 sq ft

Three Bedroom

341 / H5.05.01	
Living / Dining	5.05m x 5.65m
Kitchen	3.60m x 3.55m
Bedroom 1	3.15m x 3.35m
Bedroom 2	3.65m x 4.00m
Bedroom 3	4.75m x 3.20m
Winter Garden	2.80m x 5.50m
Total internal area	127.0m² 1367.0 sq ft
Total external area	12m² 129.2 sq ft

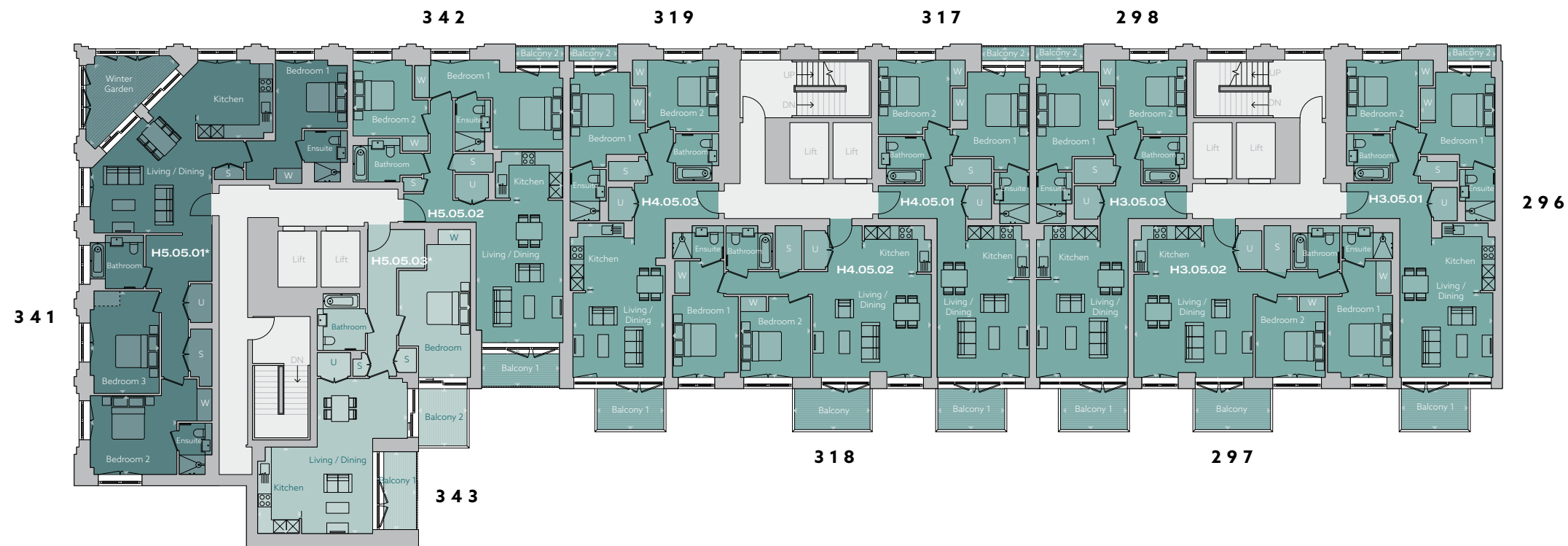
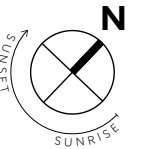
370 / H7.05.01	
Living / Dining	4.25m x 8.05m
Kitchen	3.20m x 3.95m
Bedroom 1	3.60m x 7.55m
Bedroom 2	4.35m x 3.00m
Bedroom 3	4.10m x 3.35m
Balcony 1	1.75m x 2.25m
Balcony 2	0.90m x 2.25m
Terrace	7.45m x 4.70m
Total internal area	131.0m² 1410.1 sq ft
Total external area	41.0m² 441.3 sq ft

Level

05



*Wheelchair Adaptable apartments
**Apartment ref is the plot number at time of going to press.
This may update and is not a form of address.
Apartments have openable windows either side of mullions
Please speak to your sales agent for clarification.



296

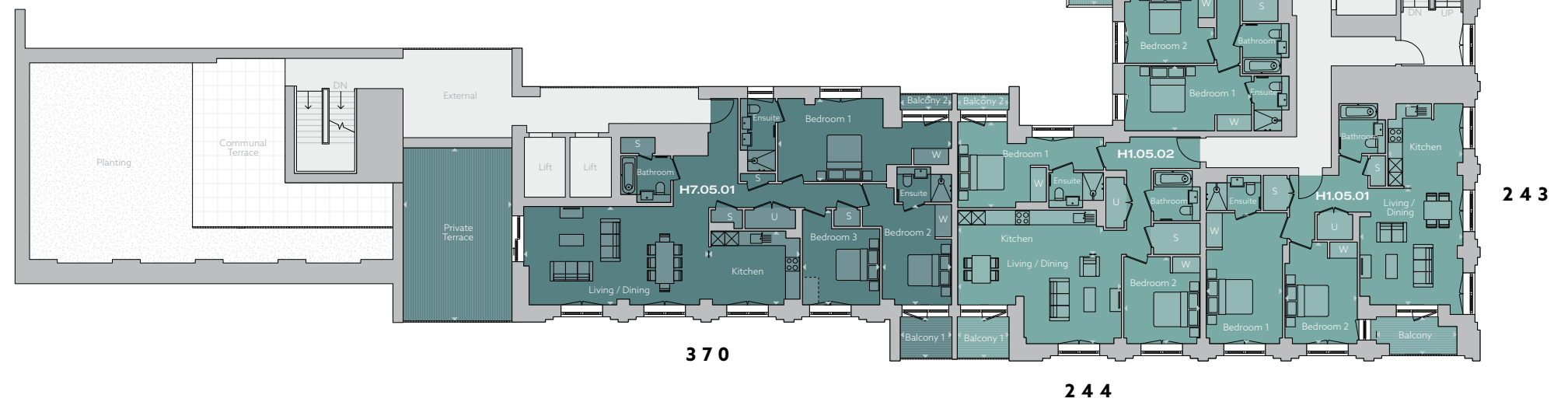


H1.01.01

Core no. Floor no. Apartment ref**

KEY

S Storage
U Utility room
W Wardrobe
--- Indicative wardrobe space



Level 06



CALTHORPE STREET



One Bedroom

249 / H1.06.03	
Living / Dining	4.95m x 3.85m
Kitchen	2.80m x 3.05m
Bedroom	3.25m x 3.85m
Balcony	3.05m x 1.90m
Total internal area	58.0m² 624.3 sq ft
Total external area	6.0m² 64.6 sq ft

Two Bedroom

247 / H1.06.01	
Living / Dining	5.05m x 4.45m
Kitchen	3.65m x 3.25m
Bedroom 1	5.65m x 3.30m
Bedroom 2	4.40m x 3.15m
Balcony	1.55m x 3.50m
Total internal area	89.0m² 958.0 sq ft
Total external area	4.5m² 48.4 sq ft

248 / H1.06.02	
Living / Dining	8.95m x 3.95m
Kitchen	3.85m x 2.50m
Bedroom 1	3.80m x 3.70m
Bedroom 2	3.15m x 4.85m
Balcony	11.65m x 4.70m
Total internal area	93.0m² 1001.0 sq ft
Total external area	55.0m² 592.0 sq ft

250 / H1.06.04	
Living / Dining	4.50m x 5.20m
Kitchen	2.90m x 2.05m
Bedroom 1	2.90m x 5.10m
Bedroom 2	3.95m x 2.80m
Balcony 1	3.05m x 1.90m
Balcony 2	2.25m x 0.90m
Total internal area	80.0m² 861.1 sq ft
Total external area	8.0m² 86.1 sq ft

Three Bedroom

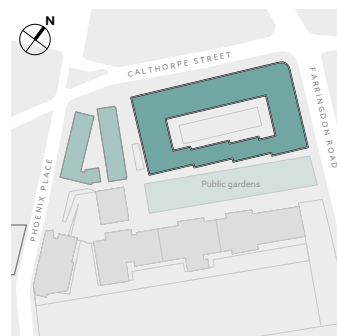
299 / H3.06.01*	
Living / Dining	4.30m x 6.75m
Kitchen	2.50m x 4.25m
Bedroom 1	5.90m x 3.80m
Bedroom 2	4.70m x 3.60m
Bedroom 3	3.65m x 3.15m
Balcony 1	1.90m x 3.05m
Balcony 2	0.90m x 2.25m
Total internal area	125.0m² 1345.5 sq ft
Total external area	8.0m² 86.1 sq ft

300 / H3.06.02*	
Living / Dining	4.20m x 6.70m
Kitchen	2.60m x 3.95m
Bedroom 1	4.70m x 3.35m
Bedroom 2	4.70m x 3.75m
Bedroom 3	3.65m x 3.05m
Balcony 1	1.90m x 4.35m
Balcony 2	0.90m x 2.25m
Total internal area	121.0m² 1302.4 sq ft
Total external area	11.0m² 118.4 sq ft

320 / H4.06.01*	
Living / Dining	4.20m x 6.70m
Kitchen	2.60m x 3.95m
Bedroom 1	4.65m x 3.35m
Bedroom 2	4.70m x 3.80m
Bedroom 3	3.65m x 3.05m
Balcony 1	1.90m x 4.35m
Balcony 2	0.90m x 2.25m
Total internal area	121.0m² 1302.4 sq ft
Total external area	11.0m² 118.4 sq ft

Four Bedroom Duplex

321 / H4.06.02	
Living / Dining	6.30m x 7.10m
Kitchen	4.90m x 3.70m
Bedroom 1	5.40m x 4.65m
Bedroom 2	5.40m x 3.95m
Bedroom 3	3.90m x 4.15m
Bedroom 4	3.90m x 4.15m
Terrace 1	8.45m x 4.70m
Terrace 2	14.25m x 6.85m
Total internal area	191.0m² 2055.9 sq ft
Total external area	121.0m² 1302.4 sq ft



H1.01.01	KEY
Core no.	S Storage
Floor no.	U Utility room
Apartment ref**	W Wardrobe
	--- Indicative wardrobe space

*Wheelchair Adaptable apartments
**Apartment ref is the plot number at time of going to press. This may update and is not a form of address.
Apartments have openable windows either side of mullions
Please speak to your sales agent for clarification.



FARRINGTON ROAD

250

249

248

247

Level 07



CALTHORPE STREET



Three Bedroom

322 / H4.07.01*	
Living / Dining	4.25m x 6.70m
Kitchen	2.60m x 3.95m
Bedroom 1	4.65m x 3.80m
Bedroom 2	4.70m x 3.35m
Bedroom 3	3.60m x 3.05m
Balcony 1	1.90m x 4.35m
Balcony 2	0.90m x 2.25m
Total internal area	121.0m² 1302.4 sq ft
Total external area	11.0m² 118.4 sq ft

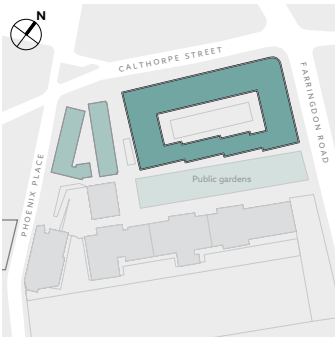
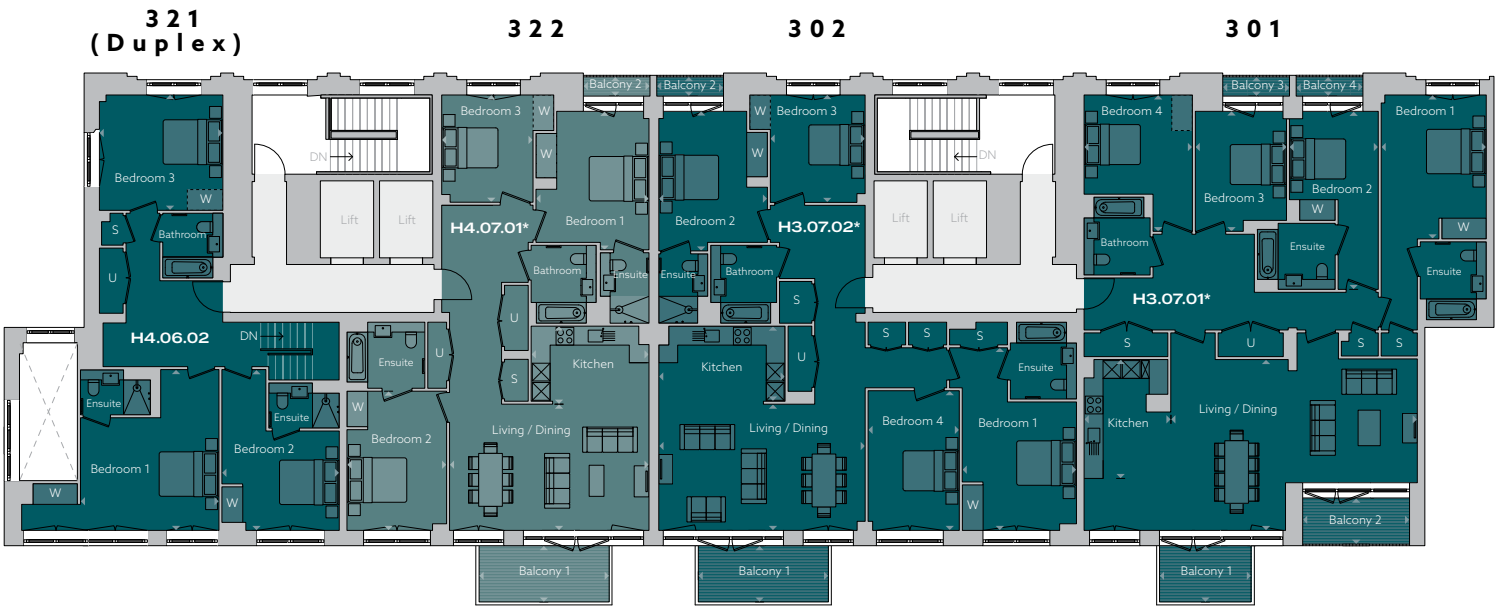
Four Bedroom

301 / H3.07.01*	
Living / Dining	5.75m x 8.30m
Kitchen	4.00m x 2.90m
Bedroom 1	4.85m x 3.55m
Bedroom 2	6.00m x 3.00m
Bedroom 3	4.05m x 3.05m
Bedroom 4	4.60m x 3.65m
Balcony 1	2.10m x 3.05m
Balcony 2	1.70m x 3.60m
Balcony 3	0.90m x 2.25m
Balcony 4	0.90m x 2.25m
Total internal area	170.0m² 1829.9 sq ft
Total external area	16.0m² 172.2 sq ft

302 / H3.07.02*	
Living / Dining	4.25m x 6.95m
Kitchen	2.50m x 4.25m
Bedroom 1	6.15m x 3.85m
Bedroom 2	4.70m x 3.65m
Bedroom 3	3.65m x 3.20m
Bedroom 4	4.70m x 3.05m
Balcony 1	1.90m x 4.35m
Balcony 2	0.90m x 2.25m
Total internal area	149.0m² 1603.8 sq ft
Total external area	11.0m² 118.4 sq ft

Four Bedroom Duplex

321 / H4.06.02	
Living / Dining	6.30m x 7.10m
Kitchen	4.90m x 3.70m
Bedroom 1	5.40m x 4.65m
Bedroom 2	5.40m x 3.95m
Bedroom 3	3.90m x 4.15m
Bedroom 4	3.90m x 4.15m
Terrace 1	8.45m x 4.70m
Terrace 2	14.25m x 6.85m
Total internal area	191.0m² 2055.9 sq ft
Total external area	121.0m² 1302.4 sq ft



H1.01.01	KEY
Core no.	S Storage
Floor no.	U Utility room
Apartment ref**	W Wardrobe
	--- Indicative wardrobe space

*Wheelchair Adaptable apartments
**Apartment ref is the plot number at time of going to press.
This may update and is not a form of address.
Apartments have openable windows either side of mullions
Please speak to your sales agent for clarification.

Bespoke specification

Inspired by Postmark's double postcode, two palettes have been created, both influenced by the stylish elegance of the West, combined with a contemporary edge from the East.

TEXTURE

A timeless neutral backdrop through textured carpets, wall tiles and perforations provide depth and character to finishes.

AMBIENCE

Soft lighting, warm timber tones and tactile matt finishes create a welcoming ambience that exudes comfort and warmth.

LUXURY

Refined elegant details and bold statements create a strong identity — with bespoke marble-inspired surfaces, polished chrome details and reflective finishes.

West



East

“

Heritage is hugely important here, with the old sorting office, so we brought this forward in the little details; such as perforations in stamps, woven hessian details in the old postal sacks and the craftsmanship in pigeon holes, creating a subtle backdrop to our concept.

”

Caroline Smith, Managing Director,
WISH Interior Architecture



KITCHEN

- Bespoke custom-crafted cabinetry in a contemporary veneered finish to base and tall units
- Lacquered wall cabinets with concealed downlighting
- Soft closing doors and drawers throughout
- Silestone worktops and matching splashbacks
- Fully fitted Siemens appliances throughout, including:
 - Integrated induction hob
 - Integrated oven and ecoClean technology
 - Integrated microwave (microwave combi to selected units, subject to kitchen design)
 - Fully integrated dishwasher
 - Fully integrated fridge freezer
 - Freestanding washer/dryer (typically located in hallway utility cupboard)
- Re-circulating extractor fan
- Convenient compartmentalised waste and recycling storage
- Undermount single or 1 ½ bowl sink (subject to kitchen design)
- Single-lever mixer tap with swivel spout, finished in chrome

BATHROOMS

- Ceiling-mounted shower head and hand-held shower set in bathroom and ensuite, finished in chrome
- Wall-mounted mirrored vanity unit with timber veneer shelving and integrated shaver socket
- Full-height tiles to walls in wet areas and tiled floor
- White ceramic wall-mounted WC with soft closing seat, concealed cistern and dual flush
- Bespoke Silestone wall-mounted basin and vanity worktop
- Tiled splashback to wash basin
- Chrome basin mixer spout and controls
- Thermostatic mixer and two-way control for shower and three-way control for bath
- Chrome heated towel rail
- Accessories include clothes hook and mounted toilet roll holder

WINDOWS & BALCONIES

- Balconies include decking and either side hung or sliding external doors
- Double-glazed windows throughout

* Ceiling heights throughout are 2.3m–2.5m. There may be some instances where heights vary. Please refer to each individual apartment drawing.

GENERAL/FINISHES

- Engineered timber flooring throughout living and kitchen spaces
- Deluxe carpet flooring to bedrooms
- Matching engineered timber flooring to storage cupboards
- Bespoke feature entrance door and designer door furniture in polished chrome
- Polished chrome door handles to all internal doors
- Painted architraves and skirting throughout
- Dedicated storage cupboards (subject to individual apartment layout)
- Fitted wardrobes in bedrooms 1 and 2 with internal lighting and drawers
- Ceiling height 2.3m–2.5m*

MECHANICAL & ELECTRICAL

- Independent thermostatically controlled comfort cooling in all living areas and bedrooms
- Underfloor heating throughout each property
- Whole apartment ventilation system incorporating heat recovery
- 13-amp circuits throughout
- All visible sockets and switch plates finished in polished chrome
- Light switches finished in polished chrome
- Low-energy, low-maintenance lighting scheme using LED, low-voltage and fluorescent fittings
- Ceiling-mounted smoke detectors and residential sprinklers within apartments

AV/TELEPHONE/DATA

- Wiring for Sky Q to living area offering both coax and high-speed data cabling for digital TV, DAB and FM radio, telephone and data services for media connectivity
- Communal satellite dish

ACCESS & CYCLE PARKING

- Cycle store located in the basement of Block H
- Electric car charging points are available on the site by separate negotiation

SECURITY

- 24-hour concierge service
- Individual video entry system for all apartments
- A network of internal and external CCTV cameras
- Authorised electronic-controlled access to basement and external doors



Computer-generated image of public realm

First-class delivery

Taylor Wimpey Central London creates high-quality residential developments in sought-after Zone 1 and Zone 2 locations. Each development is bespoke to its area using handpicked designers and architects to match local needs and tastes. Success stems from responding to the market in good time and continually evolving to meet the needs of discerning buyers in the capital.

Disclaimer: These details are intended to give a general indication of the proposed specification. The developer operates a policy of continuous product development and reserves the right to alter any part of the development specification at any time. Where brands are specified, the developer reserves the right to replace the brand with another of equal quality or better. Floorplans are intended to give a general indication of the proposed floor layout, and apartment layouts provide approximate measurements only. Dimensions are for guidance only and all measurements and areas may vary within a tolerance of 5%. Dimensions are not intended to be used for carpet sizes, appliance space or items of furniture. Total areas are provided as GIA according to RICS measuring practice. Kitchen and bathroom layouts are indicative only and are subject to change. Furniture and landscaping is shown for illustrative purposes only. All images and dimensions are not intended to form part of any contract or warranty. All images used are for illustrative purposes only. Individual features such as windows, brick and other materials' colours may vary, as may heating and electrical layouts. The name Postmark London and Folio Gardens are for marketing purposes and may not form part of the postal address.

Designed & produced by Sectorlight (2212060) sectorlight.com October 2023.

**Taylor
Wimpey**
Central London



Marketing Suite at 4 Mount Pleasant, London, WC1X 0BU
+44 (0) 203 031 6822
postmarklondon.co.uk



