



**CHOBHAM
MANOR**
E20

P H A S E 3

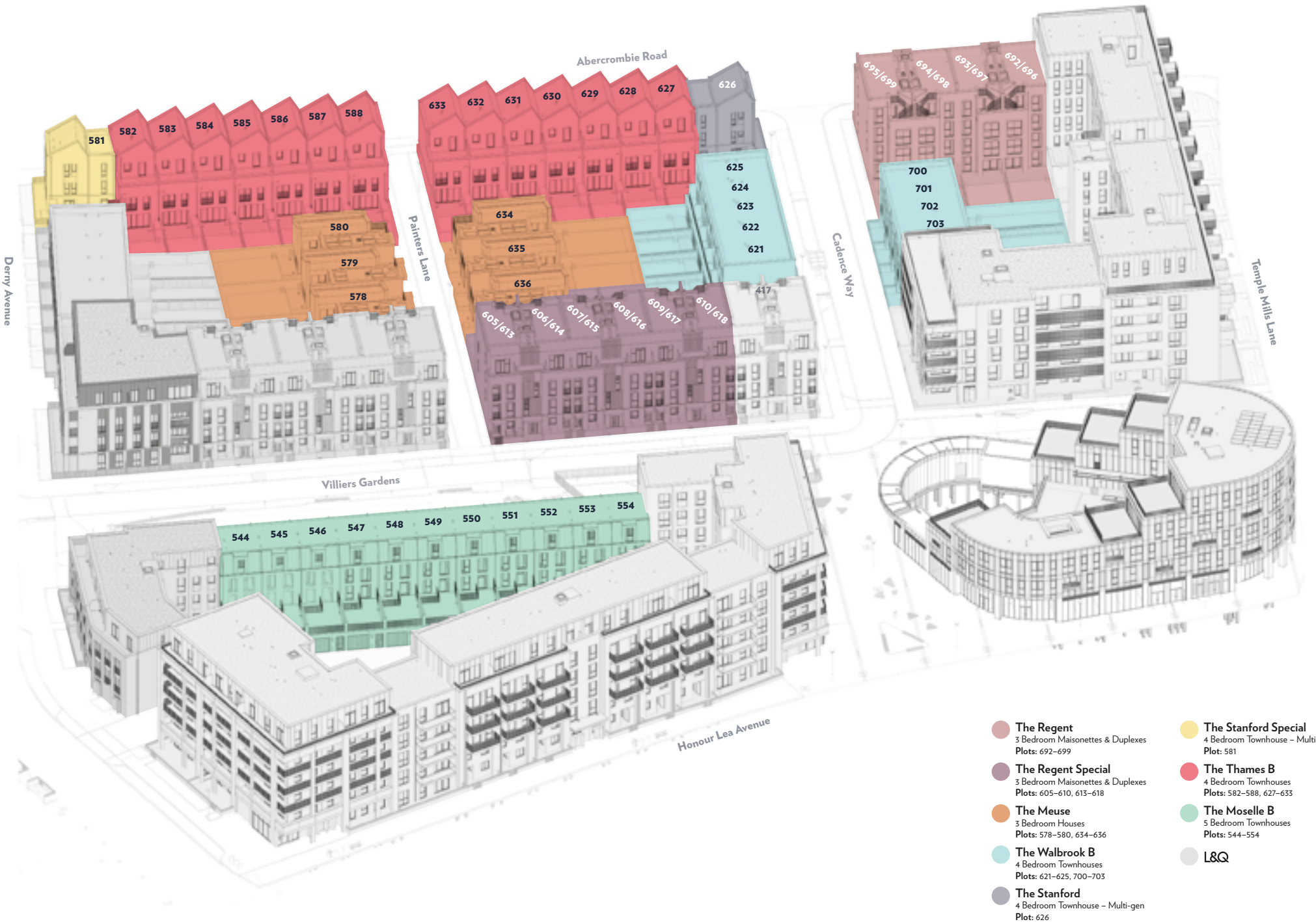
&

P H A S E 4

PRELIMINARY

**BE PART OF ONE
OF LONDON'S
MOST VIBRANT
NEW COMMUNITIES**

PHASE 3 DEVELOPMENT LAYOUT



CONTENTS

THE REGENT 3 BEDROOM MAISONETTES	P 6
THE REGENT 3 BEDROOM DUPLEXES	P 8
THE REGENT SPECIAL 3 BEDROOM MAISONETTES	P 12
THE REGENT SPECIAL 3 BEDROOM DUPLEXES	P 14
THE MEUSE 3 BEDROOM HOUSES	P 18
THE WALBROOK B 4 BEDROOM TOWNHOUSES	P 22
THE STANFORD 4 BEDROOM TOWNHOUSE - MULTI-GEN	P 26
THE STANFORD SPECIAL 4 BEDROOM TOWNHOUSE - MULTI-GEN	P 30
THE THAMES B 4 BEDROOM TOWNHOUSES	P 34
THE MOSELLE B 5 BEDROOM TOWNHOUSES	P 38

Development layout is indicative only and is subject to change. It is provided for general guidance only, it does not form the whole or any part of an offer or contract.



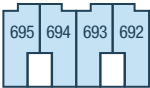
THE REGENT
3 BEDROOM MAISONETTE
PLOTS 692-695*



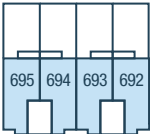
Third Floor



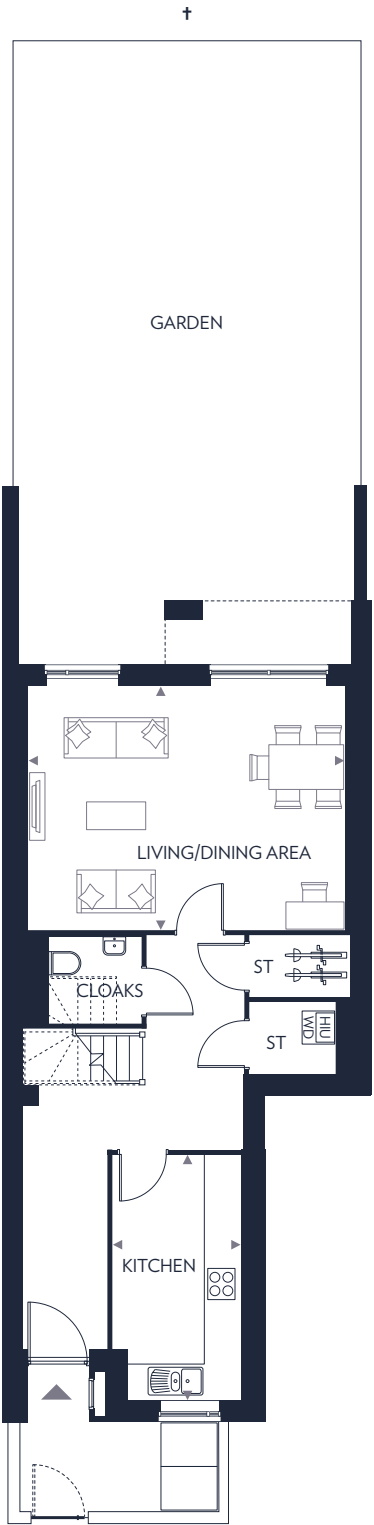
Second Floor



First Floor

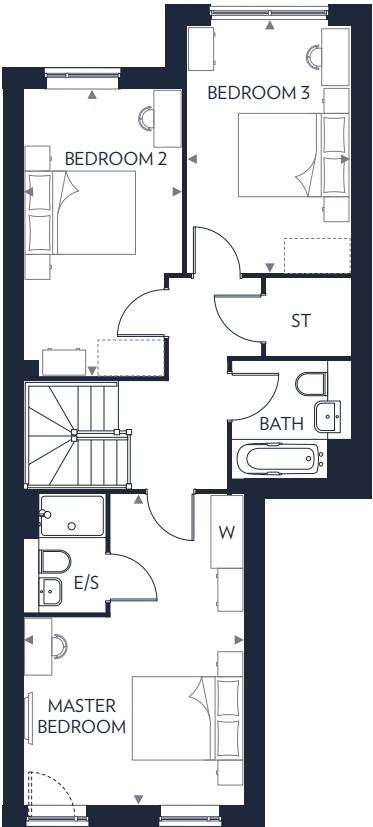


Ground Floor



Ground Floor

Kitchen	4.40m x 2.30m	14'5" x 7'7"
Living/Dining Area	5.90m x 4.40m	19'4" x 14'4"



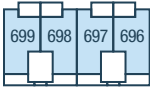
First Floor

Master Bedroom	5.50m x 4.20m	18'1" x 13'10"
Bedroom 2	5.10m x 3.10m	16'9" x 10'3"
Bedroom 3	4.40m x 2.90m	14'5" x 9'7"

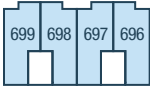
These floor plans are indicative only and depict a typical layout. The dimensions and layouts have been taken from the planning drawings issued, however the dimensions are subject to change following the issue of working drawings. Furniture is used to indicate positioning only. For exact plot specification, details of external and internal finishes, dimensions and floor plan differences consult your sales executive. All dimensions are + or - 100mm and floor plans are not shown to scale. *Plots 693 and 695 are handed. †Garden size varies to all plots.

E/S - En Suite
HIU - Heat Interface Unit
ST - Store
W - Wardrobe
WD - Washer/Dryer

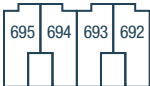
THE REGENT
3 BEDROOM DUPLEX
PLOTS 696-699*



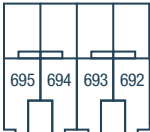
Third Floor



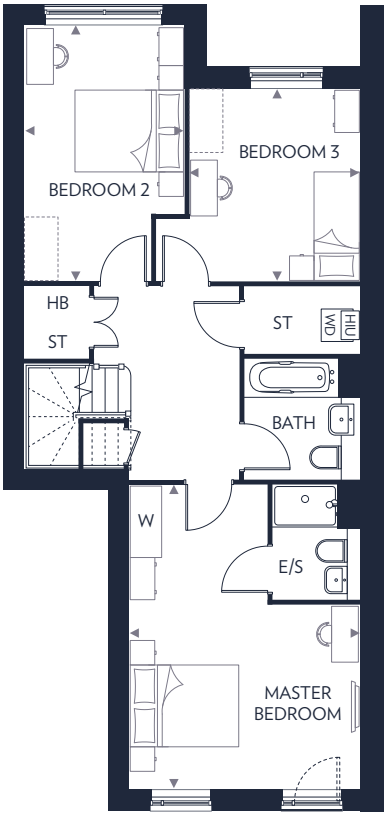
Second Floor



First Floor

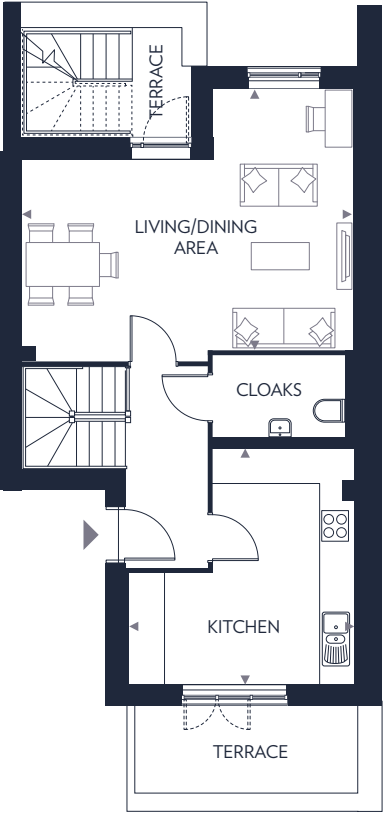


Ground Floor



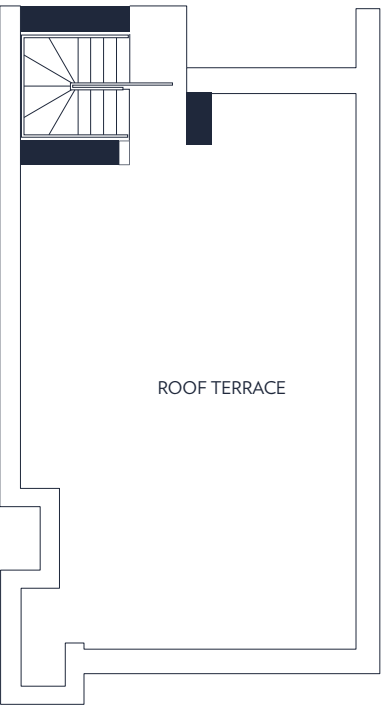
Second Floor

Master Bedroom	5.50m x 3.90m	18'2" x 12'11"
Bedroom 2	4.70m x 2.90m	15'4" x 9'7"
Bedroom 3	3.50m x 2.80m	11'6" x 9'3"



Third Floor

Kitchen	4.30m x 3.80m	14'1" x 12'7"
Living/Dining Area	5.70m x 4.80m	18'8" x 15'7"



Roof Terrace

These floor plans are indicative only and depict a typical layout. The dimensions and layouts have been taken from the planning drawings issued, however the dimensions are subject to change following the issue of working drawings. Furniture is used to indicate positioning only. For exact plot specification, details of external and internal finishes, dimensions and floor plan differences consult your sales executive. All dimensions are + or - 100mm and floor plans are not shown to scale. *Plots 696 & 698 are handed.

E/S – En Suite
HIU – Heat Interface Unit
HB – Home Booster
ST – Store
W – Wardrobe
WD – Washer/Dryer



THE REGENT SPECIAL
3 BEDROOM MAISONETTE
PLOTS 605-610*



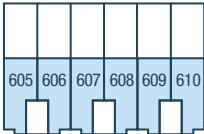
Third Floor



Second Floor



First Floor

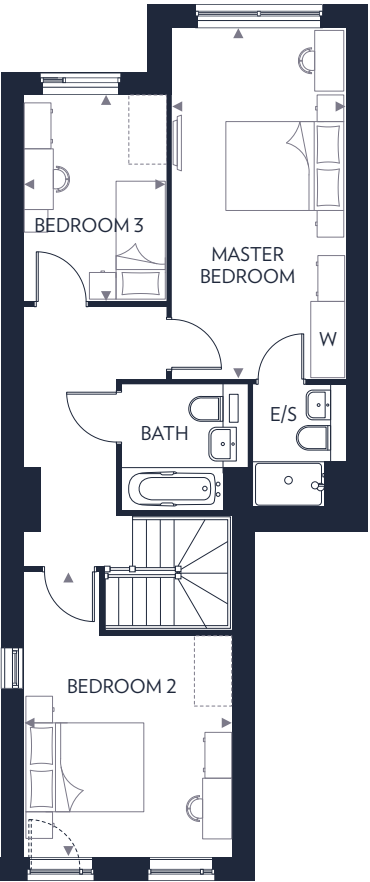


Ground Floor



Ground Floor

Kitchen/ Living/Dining Area
6.90m x 5.20m 22'9" x 17'1"



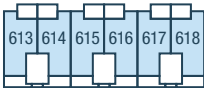
First Floor

Master Bedroom	5.90m x 2.90m	19'3" x 9'7"
Bedroom 2	4.80m x 3.50m	15'8" x 11'5"
Bedroom 3	3.40m x 2.40m	11'4" x 7'10"

These floor plans are indicative only and depict a typical layout. The dimensions and layouts have been taken from the planning drawings issued, however the dimensions are subject to change following the issue of working drawings. Furniture is used to indicate positioning only. For exact plot specification, details of external and internal finishes, dimensions and floor plan differences consult your sales executive. All dimensions are + or - 100mm and floor plans are not shown to scale. *Plots 606, 608 & 610 are handed. †Garden size varies to all plots.

E/S - En Suite
HIU - Heat Interface Unit
ST - Store
W - Wardrobe
WD - Washer/Dryer

THE REGENT SPECIAL
3 BEDROOM DUPLEX
PLOTS 613-618*



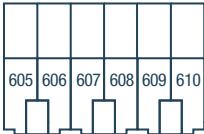
Third Floor



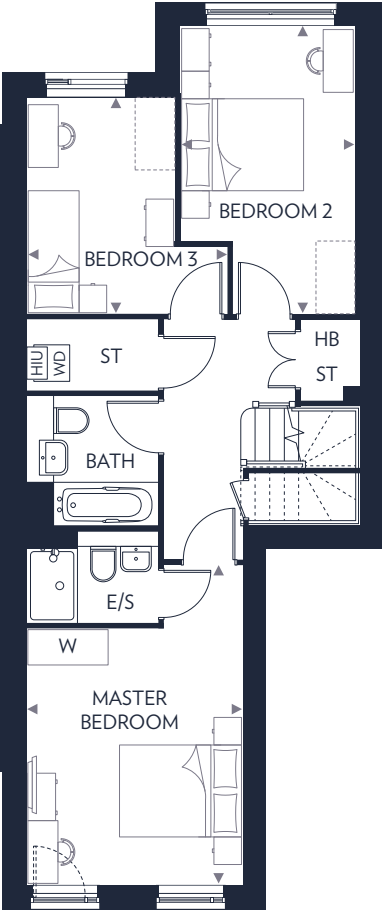
Second Floor



First Floor

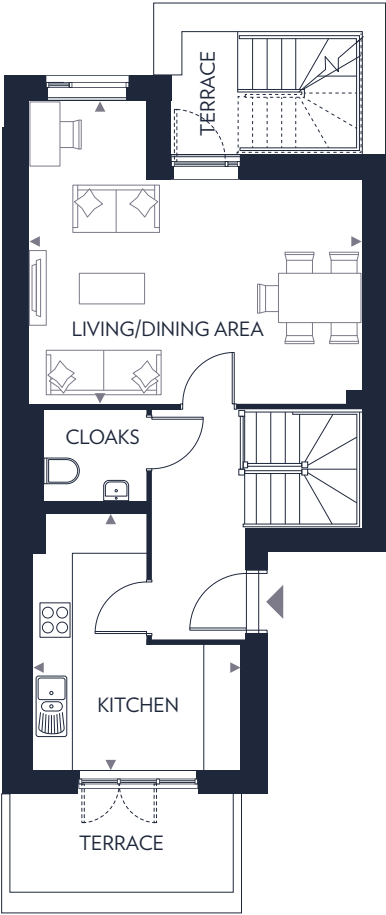


Ground Floor



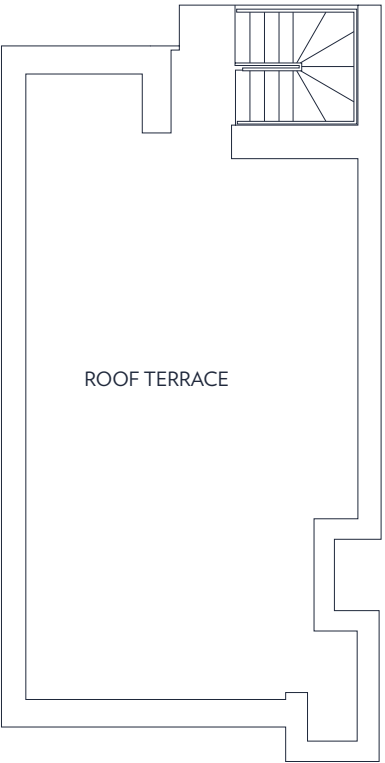
Second Floor

Master Bedroom	4.20m x 3.50m	13'8" x 11'5"
Bedroom 2	4.60m x 2.80m	15'2" x 9'4"
Bedroom 3	3.50m x 3.20m	11'6" x 10'7"



Third Floor

Kitchen	4.30m x 3.40m	13'7" x 11'1"
Living/Dining Area	5.40m x 4.90m	17'8" x 16'1"



Roof Terrace

These floor plans are indicative only and depict a typical layout. The dimensions and layouts have been taken from the planning drawings issued, however the dimensions are subject to change following the issue of working drawings. Furniture is used to indicate positioning only. For exact plot specification, details of external and internal finishes, dimensions and floor plan differences consult your sales executive. All dimensions are + or - 100mm and floor plans are not shown to scale. *Plots 614, 616 & 618 are handed.

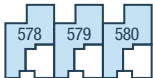
E/S – En Suite
HIU – Heat Interface Unit
HB – Home Booster
ST – Store
W – Wardrobe
WD – Washer/Dryer



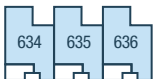
THE MEUSE
3 BEDROOM HOUSE
PLOTS 578-580 & 634-636



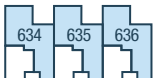
First Floor



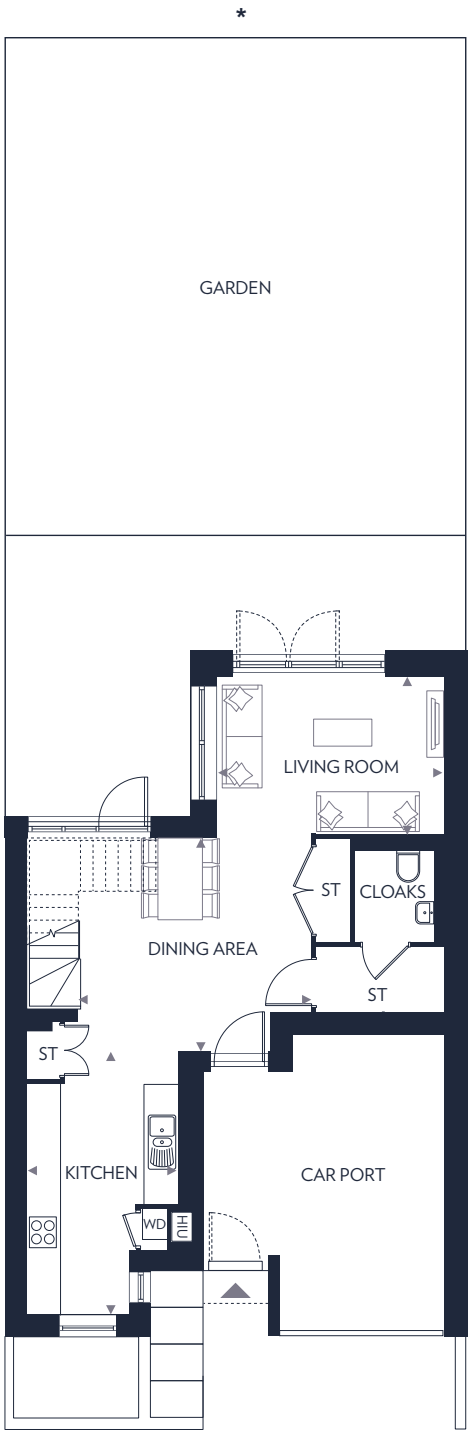
Ground Floor



First Floor



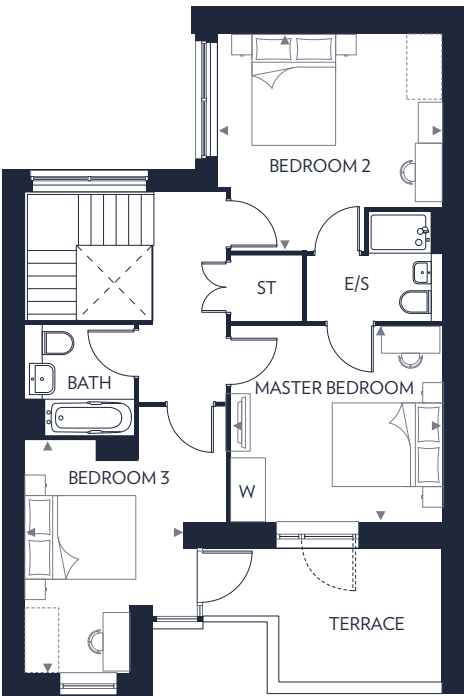
Ground Floor



Ground Floor

Kitchen	5.10m x 2.90m	16'8" x 9'6"
Living Room	4.40m x 3.00m	14'5" x 9'11"
Dining Area	4.50m x 4.10m	14'8" x 13'5"

These floor plans are indicative only and depict a typical layout. The dimensions and layouts have been taken from the planning drawings issued, however the dimensions are subject to change following the issue of working drawings. Furniture is used to indicate positioning only. For exact plot specification, details of external and internal finishes, dimensions and floor plan differences consult your sales executive. All dimensions are + or - 100mm and floor plans are not shown to scale. *Garden size varies to all plots.



First Floor

Master Bedroom	4.10m x 3.80m	13'6" x 12'4"
Bedroom 2	4.40m x 4.20m	14'5" x 13'9"
Bedroom 3	4.10m x 3.00m	13'5" x 10'0"

E/S - En Suite
HIU - Heat Interface Unit
ST - Store
W - Wardrobe
WD - Washer/Dryer



THE WALBROOK B
4 BEDROOM TOWNHOUSE
PLOTS 621-625 & 700-703



700701702703

Second Floor

700701702703

First Floor

700701702703

Ground Floor

621622623624625

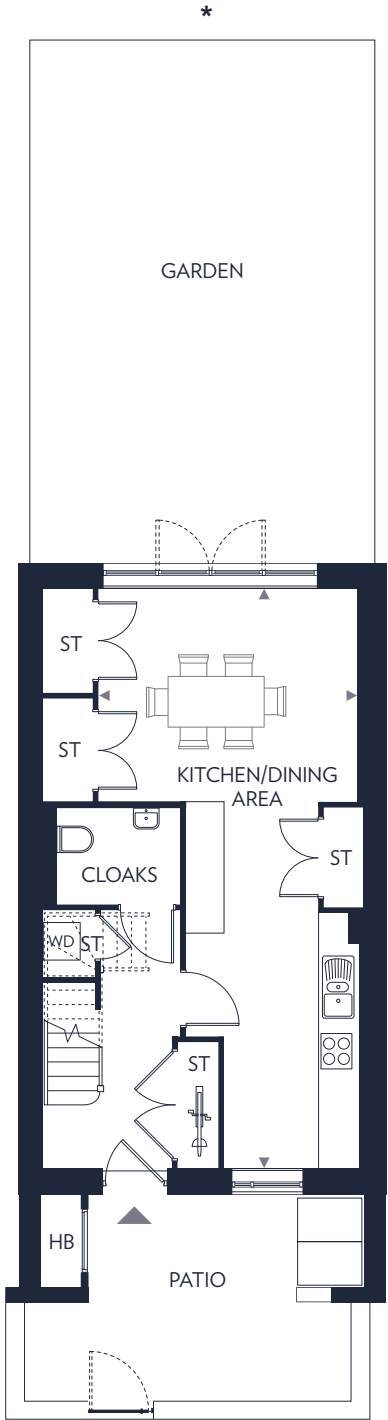
Second Floor

621622623624625

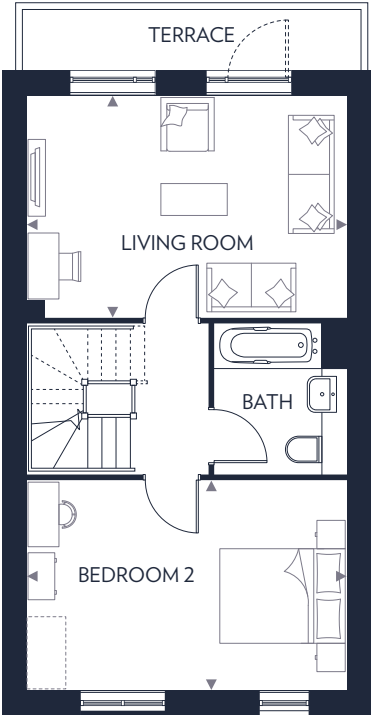
First Floor

621622623624625

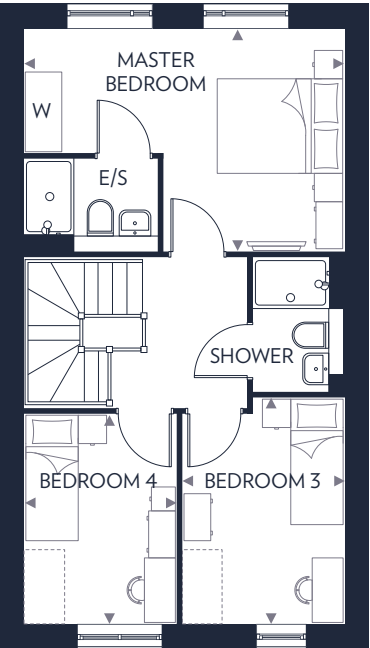
Ground Floor



Ground Floor
Kitchen/Dining Area
9.10m x 4.10m 29'11" x 13'4"



First Floor
Living Room
5.00m x 3.50m 16'7" x 11'6"
Bedroom 2
5.10m x 3.30m 16'7" x 10'10"



Second Floor
Master Bedroom
5.00m x 3.50m 16'7" x 11'6"
Bedroom 3
3.60m x 2.60m 11'8" x 8'4"
Bedroom 4
3.30m x 2.40m 10'10" x 7'11"

These floor plans are indicative only and depict a typical layout. The dimensions and layouts have been taken from the planning drawings issued, however the dimensions are subject to change following the issue of working drawings. Furniture is used to indicate positioning only. For exact plot specification, details of external and internal finishes, dimensions and floor plan differences consult your sales executive. All dimensions are + or - 100mm and floor plans are not shown to scale. *Garden size varies to all plots.

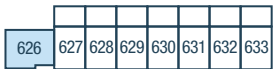
E/S - En Suite
HB - Home Booster
ST - Store
W - Wardrobe
WD - Washer/Dryer



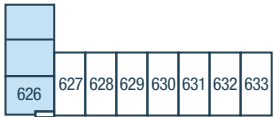
THE STANFORD

4 BEDROOM TOWNHOUSE - MULTI-GEN

PLOT 626



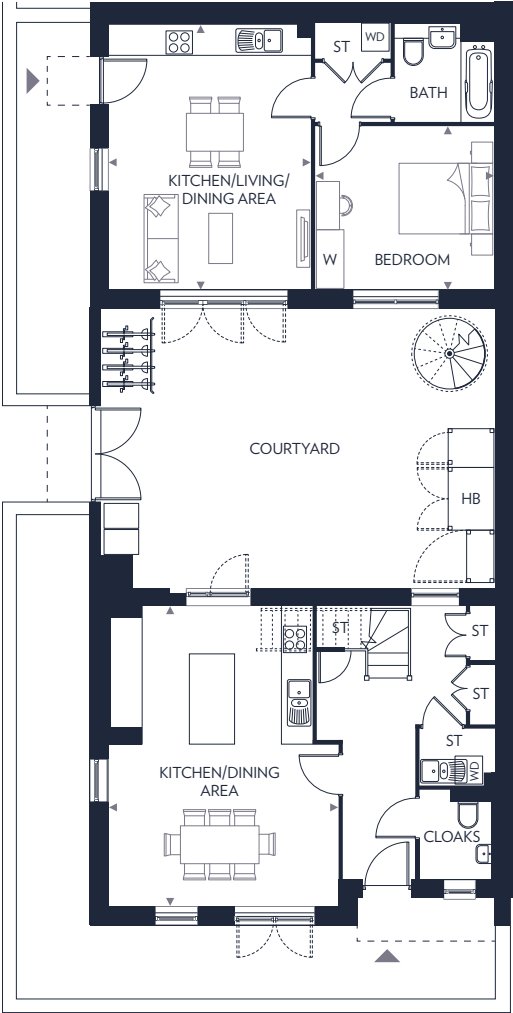
Second Floor



First Floor



Ground Floor



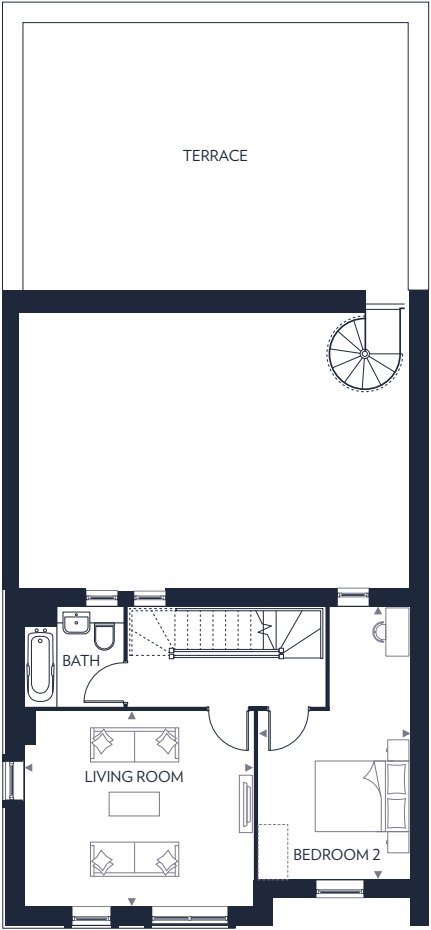
Ground Floor

Kitchen/Dining Area
6.30m x 4.80m 20'8" x 15'11"

Ground Floor Annexe

Kitchen/Living/Dining Area
5.60m x 4.30m 18'5" x 14'0"

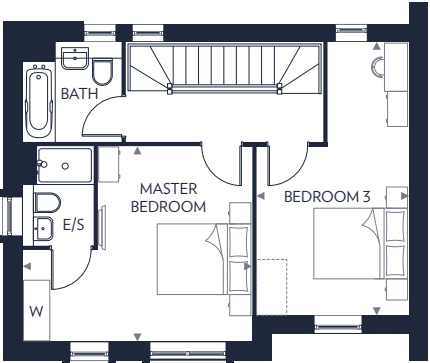
Bedroom
3.80m x 3.50m 12'5" x 11'5"



First Floor

Living Room
4.80m x 4.10m 15'11" x 13'6"

Bedroom 2
5.70m x 3.20m 18'10" x 10'6"



Second Floor

Master Bedroom
4.80m x 4.10m 15'11" x 13'6"

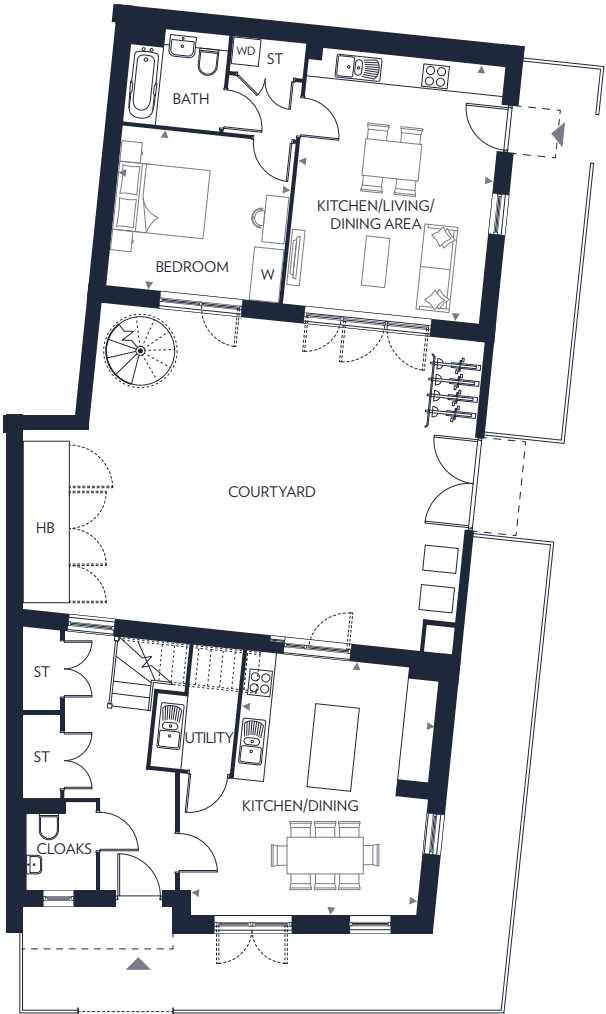
Bedroom 3
5.70m x 3.20m 18'10" x 10'6"

These floor plans are indicative only and depict a typical layout. The dimensions and layouts have been taken from the planning drawings issued, however the dimensions are subject to change following the issue of working drawings. Furniture is used to indicate positioning only. For exact plot specification, details of external and internal finishes, dimensions and floor plan differences consult your sales executive. All dimensions are + or - 100mm and floor plans are not shown to scale.

E/S - En Suite
HB - Home Booster
ST - Store
W - Wardrobe
WD - Washer/Dryer



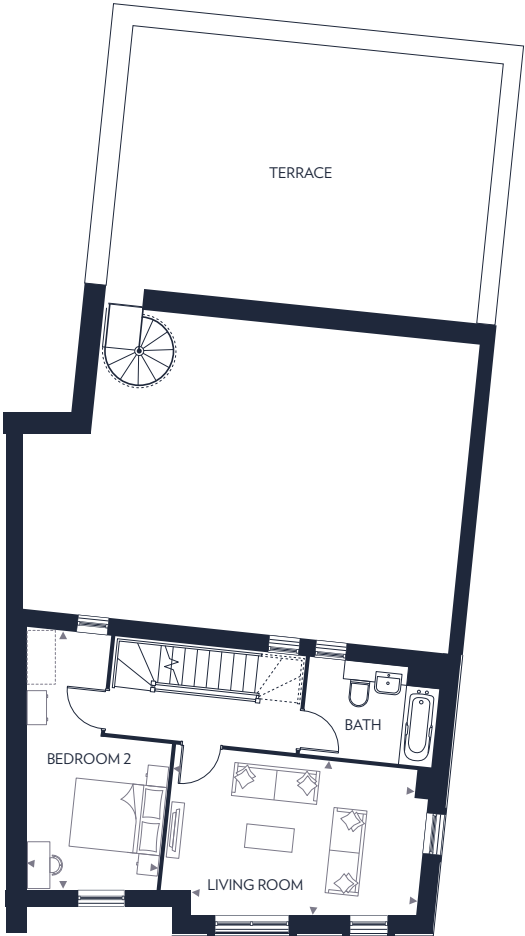
THE STANFORD SPECIAL
4 BEDROOM TOWNHOUSE - MULTI-GEN
PLOT 581



Ground Floor
Kitchen/Dining Area
5.30m x 4.90m 17'5" x 15'11"

Ground Floor Annexe
Kitchen/Living/Dining Area
5.60m x 4.30m 18'5" x 14'0"

Bedroom
3.80m x 3.50m 12'5" x 11'5"



First Floor
Living Room
5.30m x 3.70m 17'3" x 12'0"

Bedroom 2
5.40m x 2.80m 17'7" x 9'4"

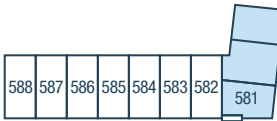


Second Floor
Master Bedroom
5.50m x 3.70m 18'2" x 12'0"

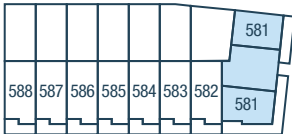
Bedroom 3
5.40m x 2.90m 17'7" x 9'7"



Second Floor



First Floor



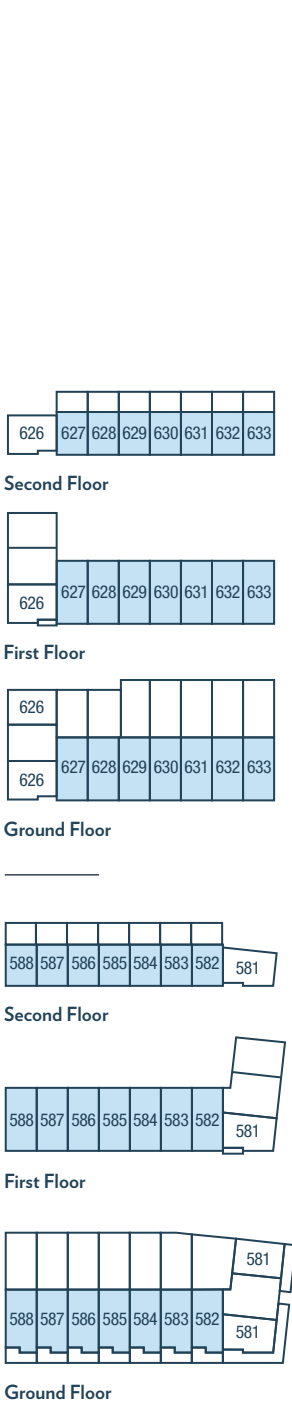
Ground Floor

These floor plans are indicative only and depict a typical layout. The dimensions and layouts have been taken from the planning drawings issued, however the dimensions are subject to change following the issue of working drawings. Furniture is used to indicate positioning only. For exact plot specification, details of external and internal finishes, dimensions and floor plan differences consult your sales executive. All dimensions are + or - 100mm and floor plans are not shown to scale.

E/S - En Suite
HB - Home Booster
ST - Store
W - Wardrobe
WD - Washer/Dryer



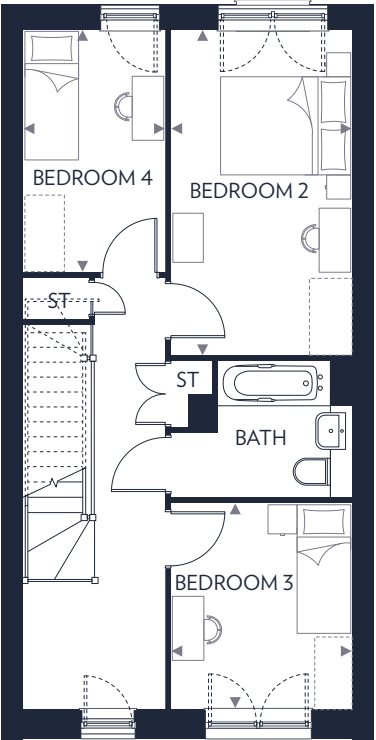
THE THAMES B
4 BEDROOM TOWNHOUSE
PLOTS 582-588 & 627-633



Ground Floor

Kitchen
4.20m x 2.20m 13'10" x 7'1"

Living/Dining Area
6.20m x 5.00m 20'0" x 16'4"



First Floor

Bedroom 2
4.90m x 2.70m 16'1" x 9'0"

Bedroom 3
3.70m x 2.20m 12'3" x 7'1"

Bedroom 4
3.30m x 2.70m 10'10" x 9'0"



Second Floor

Master Bedroom
5.10m x 4.90m 16'8" x 16'1"

These floor plans are indicative only and depict a typical layout. The dimensions and layouts have been taken from the planning drawings issued, however the dimensions are subject to change following the issue of working drawings. Furniture is used to indicate positioning only. For exact plot specification, details of external and internal finishes, dimensions and floor plan differences consult your sales executive. All dimensions are + or - 100mm and floor plans are not shown to scale. *Garden size varies to all plots.

E/S - En Suite
HB - Home Booster
HIU - Heat Interface Unit
ST - Store
W - Wardrobe
WD - Washer/Dryer



THE MOSELLE B
5 BEDROOM TOWNHOUSE
PLOTS 544-554



544	545	546	547	548	549	550	551	552	553	554
-----	-----	-----	-----	-----	-----	-----	-----	-----	-----	-----

Third Floor

544	545	546	547	548	549	550	551	552	553	554
-----	-----	-----	-----	-----	-----	-----	-----	-----	-----	-----

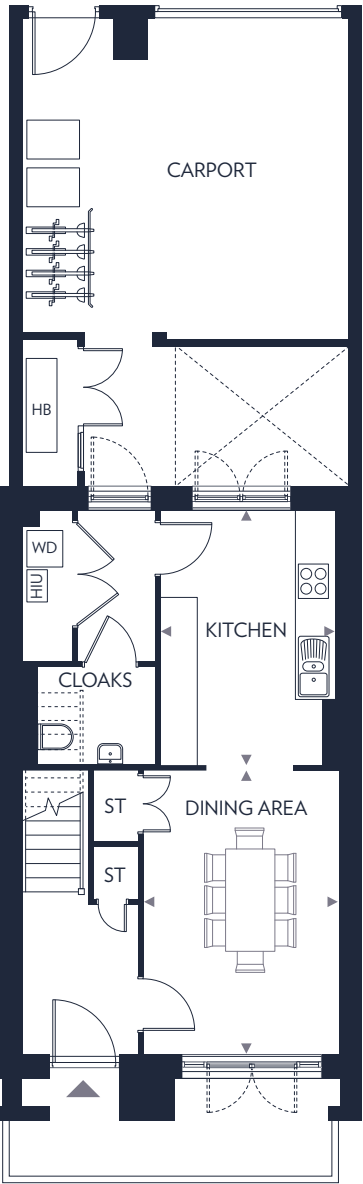
Second Floor

544	545	546	547	548	549	550	551	552	553	554

First Floor

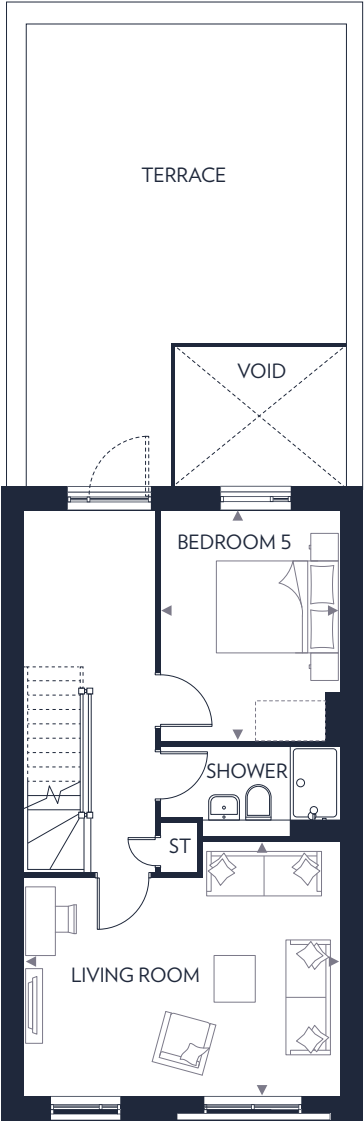
544	545	546	547	548	549	550	551	552	553	554

Ground Floor



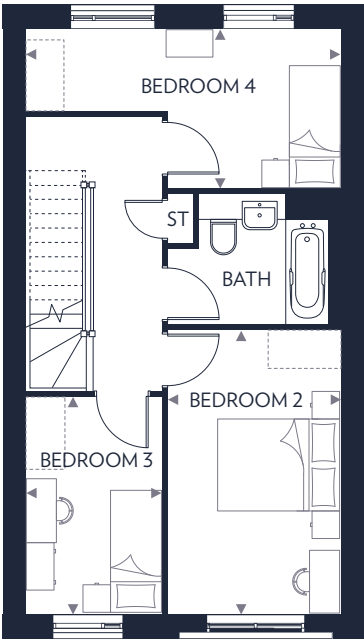
Ground Floor

Kitchen	
4.10m x 2.80m	13'6" x 9'4"
Dining Area	
4.60m x 3.20m	15'0" x 10'5"



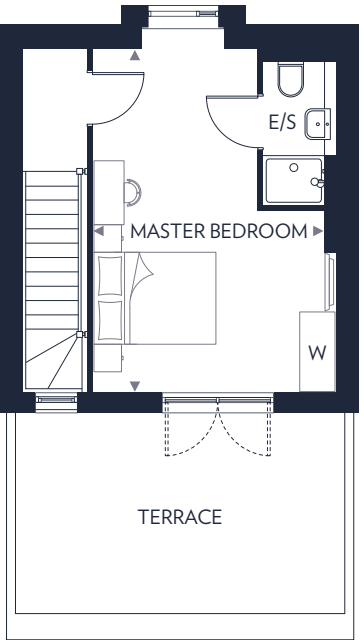
First Floor

Living Room	
5.10m x 4.10m	16'9" x 13'5"
Bedroom 5	
3.70m x 2.90m	12'3" x 9'6"



Second Floor

Bedroom 2	
4.60m x 2.80m	15'1" x 9'3"
Bedroom 3	
3.50m x 2.20m	11'7" x 7'3"
Bedroom 4	
5.10m x 2.60m	16'9" x 8'6"



Third Floor

Master Bedroom	
5.50m x 4.00m	17'11" x 13'0"

These floor plans are indicative only and depict a typical layout. The dimensions and layouts have been taken from the planning drawings issued, however the dimensions are subject to change following the issue of working drawings. Furniture is used to indicate positioning only. For exact plot specification, details of external and internal finishes, dimensions and floor plan differences consult your sales executive. All dimensions are + or - 100mm and floor plans are not shown to scale.

E/S – En Suite
HB – Home Booster
HIU – Heat Interface Unit
ST – Store
W – Wardrobe
WD – Washer/Dryer



CHOBHAM
MANOR
E20

P H A S E 4

PRELIMINARY

PHASE 4 DEVELOPMENT LAYOUT



CONTENTS

CRITERIUM HOUSE 1, 2 & 3 BEDROOM APARTMENTS	P44
TRIATHLON POINT 1, 2 & 3 BEDROOM APARTMENTS	P58
AUDAX HEIGHTS 1, 2 & 3 BEDROOM APARTMENTS	P76

- CRITERIUM HOUSE**
PLOTS 720-774
- TRIATHLON POINT**
PLOTS 775-837
- AUDAX HEIGHTS**
PLOTS 838-880
- COMMERCIAL SPACE
ON GROUND FLOOR**

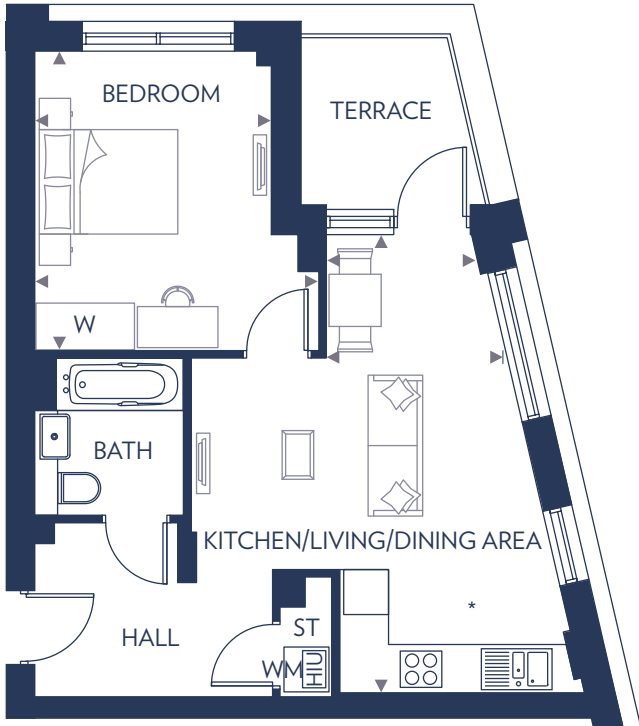
Development layout is indicative only and is subject to change. It is provided for general guidance only, it does not form the whole or any part of an offer or contract.



CRITERIUM HOUSE



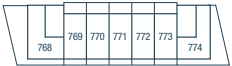
1 BEDROOM APARTMENT
PLOTS 737, 747, 757 & 767



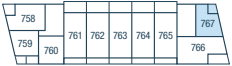
Kitchen/Living/Dining Area
6.10m x 2.41m (max) 1.93m (min) 20'0" x 7'11" (max) 6'4" (min)

Bedroom
4.00m x 3.81m (max) 3.17m (min) 13'1" x 12'6" (max) 10'5" (min)

HIU – Heat Interface Unit
ST – Store
W – Wardrobe
WM – Washing Machine



Fifth Floor



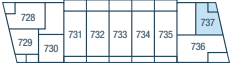
Fourth Floor



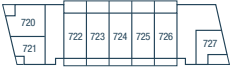
Third Floor



Second Floor



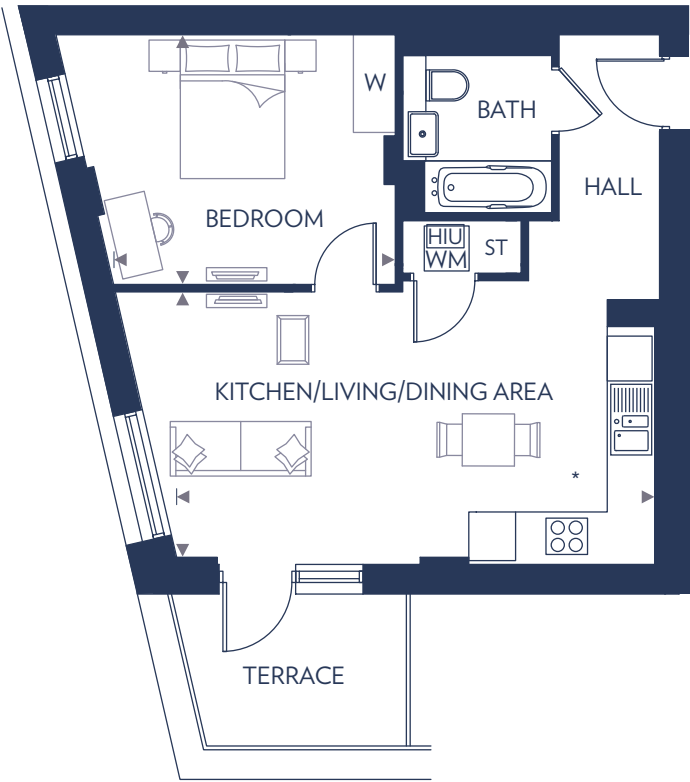
First Floor



Ground Floor

These floor plans are indicative only and depict a typical layout. The dimensions and layouts have been taken from the planning drawings issued, however the dimensions are subject to change following the issue of working drawings. Furniture is used to indicate positioning only. For exact plot specification, details of external and internal finishes, dimensions and floor plan differences consult your sales executive. All dimensions are + or – 100mm and floor plans are not shown to scale. *Kitchen layouts vary, please speak to a sales executive for details.

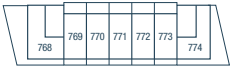
1 BEDROOM APARTMENT
PLOTS 729, 739, 749 & 759



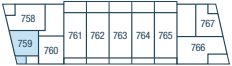
Kitchen/Living/Dining Area
6.37m x 3.64m 20'11" x 11'11"

Bedroom
3.76m x 3.33m 12'4" x 10'11"

HIU – Heat Interface Unit
ST – Store
W – Wardrobe
WM – Washing Machine



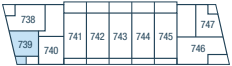
Fifth Floor



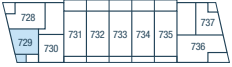
Fourth Floor



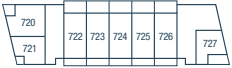
Third Floor



Second Floor



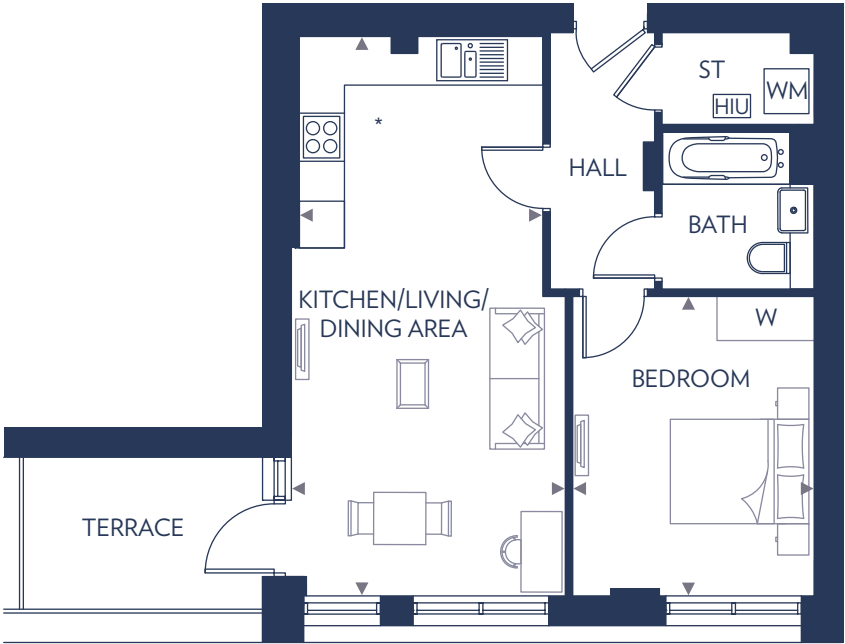
First Floor



Ground Floor

These floor plans are indicative only and depict a typical layout. The dimensions and layouts have been taken from the planning drawings issued, however the dimensions are subject to change following the issue of working drawings. Furniture is used to indicate positioning only. For exact plot specification, details of external and internal finishes, dimensions and floor plan differences consult your sales executive. All dimensions are + or – 100mm and floor plans are not shown to scale. *Kitchen layouts vary, please speak to a sales executive for details.

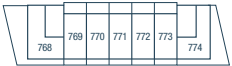
1 BEDROOM APARTMENT
PLOTS 730, 740, 750 & 760



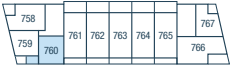
Kitchen/Living/Dining Area
7.45m x 3.65m (max) 3.28m (min) 24'5" x 11'11" (max) 10'9" (min)

Bedroom
4.00m x 3.20m 13'1" x 10'6"

HIU – Heat Interface Unit
ST – Store
W – Wardrobe
WM – Washing Machine



Fifth Floor



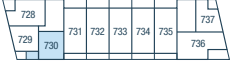
Fourth Floor



Third Floor



Second Floor



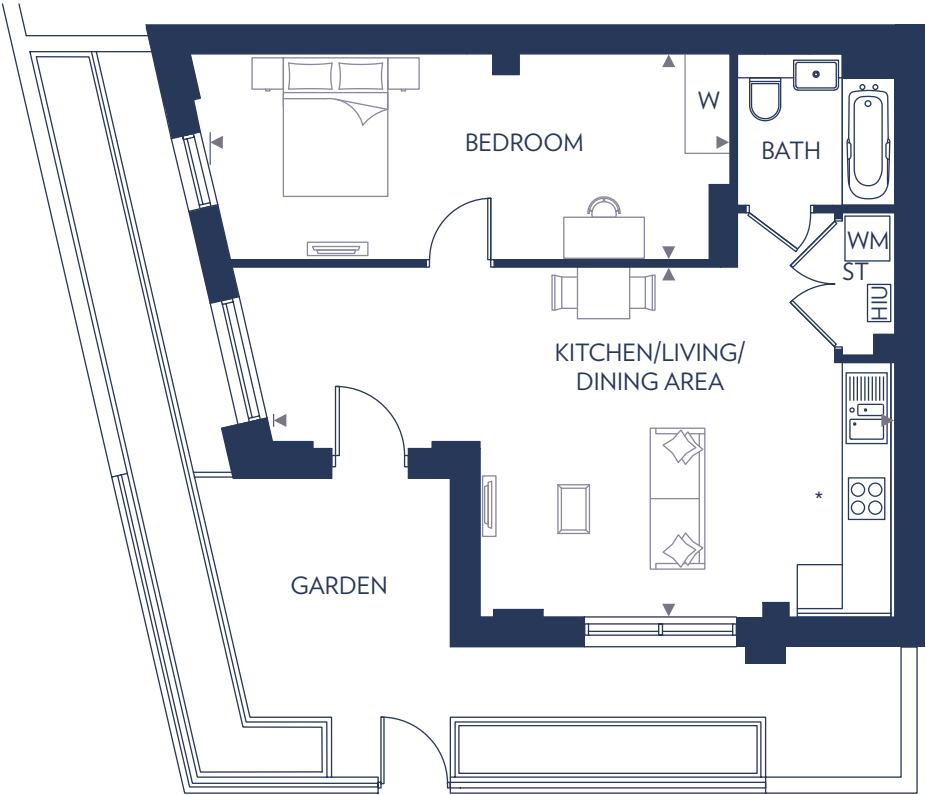
First Floor



Ground Floor

These floor plans are indicative only and depict a typical layout. The dimensions and layouts have been taken from the planning drawings issued, however the dimensions are subject to change following the issue of working drawings. Furniture is used to indicate positioning only. For exact plot specification, details of external and internal finishes, dimensions and floor plan differences consult your sales executive. All dimensions are + or – 100mm and floor plans are not shown to scale. *Kitchen layouts vary, please speak to a sales executive for details.

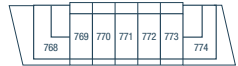
1 BEDROOM APARTMENT
PLOT 721



Kitchen/Living/Dining Area
5.46m x 4.67m 17'11" x 15'4"

Bedroom
6.99m x 2.75m 22'11" x 9'0"

HIU – Heat Interface Unit
ST – Store
W – Wardrobe
WM – Washing Machine



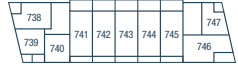
Fifth Floor



Fourth Floor



Third Floor



Second Floor



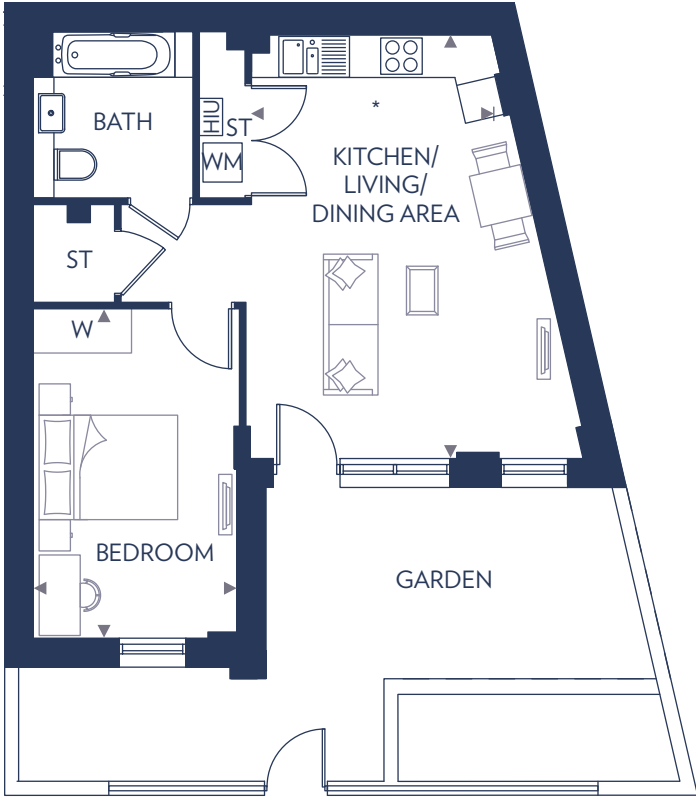
First Floor



Ground Floor

These floor plans are indicative only and depict a typical layout. The dimensions and layouts have been taken from the planning drawings issued, however the dimensions are subject to change following the issue of working drawings. Furniture is used to indicate positioning only. For exact plot specification, details of external and internal finishes, dimensions and floor plan differences consult your sales executive. All dimensions are + or – 100mm and floor plans are not shown to scale. *Kitchen layout may vary, please speak to a sales executive for details.

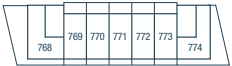
1 BEDROOM APARTMENT
PLOT 727



Kitchen/Living/Dining Area
6.47m x 3.67m 21'2" x 12'0"

Bedroom
5.05m x 3.17m 16'6" x 10'5"

HIU – Heat Interface Unit
ST – Store
W – Wardrobe
WM – Washing Machine



Fifth Floor



Fourth Floor



Third Floor



Second Floor

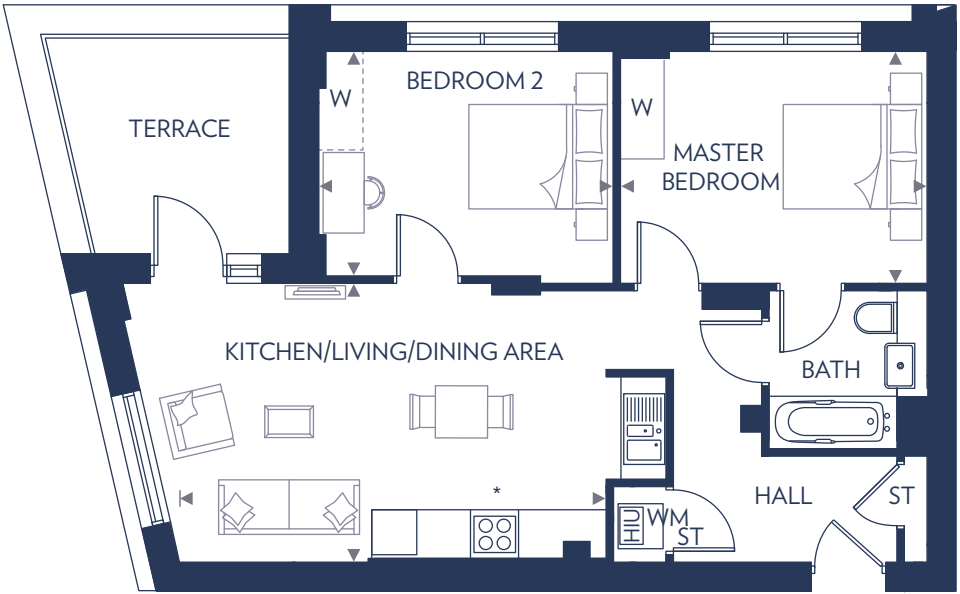


First Floor



Ground Floor

2 BEDROOM APARTMENT
PLOTS 728, 738, 748 & 758

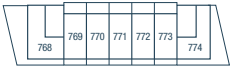


Kitchen/Living/Dining Area
5.70m x 3.72m 18'8" x 12'2"

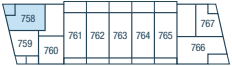
Master Bedroom
4.09m x 3.10m 13'5" x 10'2"

Bedroom 2
3.93m x 3.10m 12'10" x 10'2"

HIU – Heat Interface Unit
ST – Store
W – Wardrobe
WM – Washing Machine



Fifth Floor



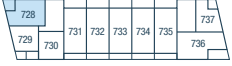
Fourth Floor



Third Floor



Second Floor



First Floor

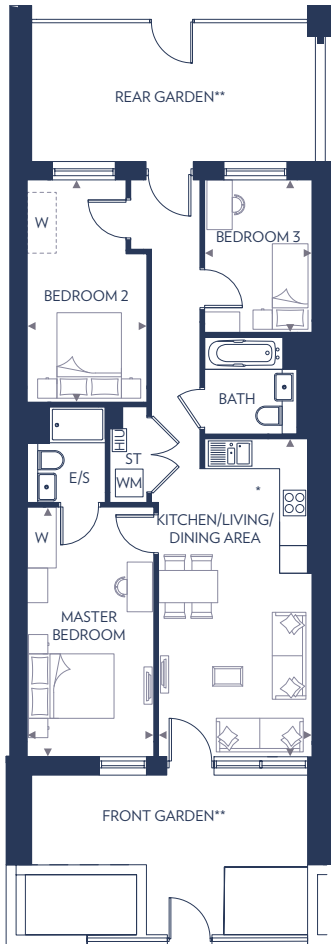


Ground Floor

These floor plans are indicative only and depict a typical layout. The dimensions and layouts have been taken from the planning drawings issued, however the dimensions are subject to change following the issue of working drawings. Furniture is used to indicate positioning only. For exact plot specification, details of external and internal finishes, dimensions and floor plan differences consult your sales executive. All dimensions are + or – 100mm and floor plans are not shown to scale. *Kitchen layout may vary, please speak to a sales executive for details.

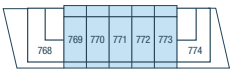
These floor plans are indicative only and depict a typical layout. The dimensions and layouts have been taken from the planning drawings issued, however the dimensions are subject to change following the issue of working drawings. Furniture is used to indicate positioning only. For exact plot specification, details of external and internal finishes, dimensions and floor plan differences consult your sales executive. All dimensions are + or – 100mm and floor plans are not shown to scale. *Kitchen layouts vary, please speak to a sales executive for details.

3 BEDROOM APARTMENT
PLOTS 722-726, 731-735, 741-745,
751-755, 761-765 & 769-773

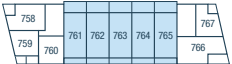


Kitchen/Living/Dining Area	
6.88m x 3.32m	22'7" x 10'10"
Master Bedroom	
5.37m x 2.75m	17'7" x 9'0"
Bedroom 2	
4.81m (max) x 2.60m (max)	15'9" (max) x 8'6" (max)
Bedroom 3	
3.30m x 2.32m	10'9" x 7'7"

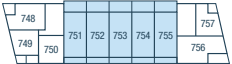
E/S – En Suite
HIU – Heat Interface Unit
ST – Store
W – Wardrobe
WM – Washing Machine



Fifth Floor



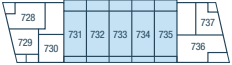
Fourth Floor



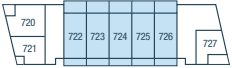
Third Floor



Second Floor



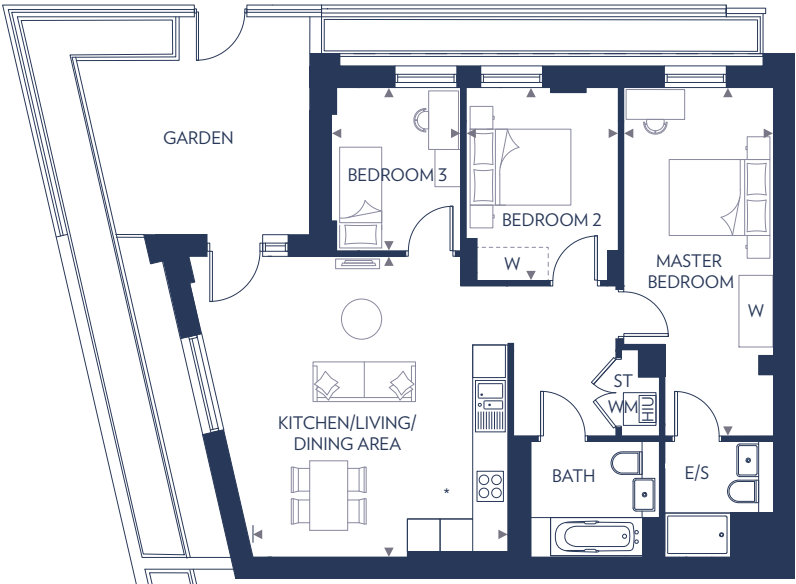
First Floor



Ground Floor

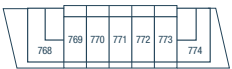
These floor plans are indicative only and depict a typical layout. The dimensions and layouts have been taken from the planning drawings issued, however the dimensions are subject to change following the issue of working drawings. Furniture is used to indicate positioning only. For exact plot specification, details of external and internal finishes, dimensions and floor plan differences consult your sales executive. All dimensions are + or – 100mm and floor plans are not shown to scale. *Kitchen layouts vary, please speak to a sales executive for details. **Balcony to plots on first, second, third, fourth and fifth floor.

3 BEDROOM APARTMENT
PLOT 720

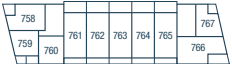


Kitchen/Living/Dining Area	
5.52m x 4.68m	18'1" x 15'4"
Master Bedroom	
6.42m x 2.75m (max)	21'1" x 9'0"
Bedroom 2	
3.54m x 2.79m	11'7" x 9'2"
Bedroom 3	
3.00m x 2.37m	9'10" x 7'9"

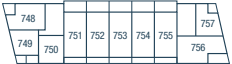
E/S – En Suite
HIU – Heat Interface Unit
ST – Store
W – Wardrobe
WM – Washing Machine



Fifth Floor



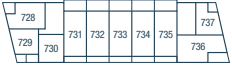
Fourth Floor



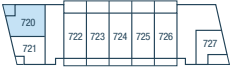
Third Floor



Second Floor



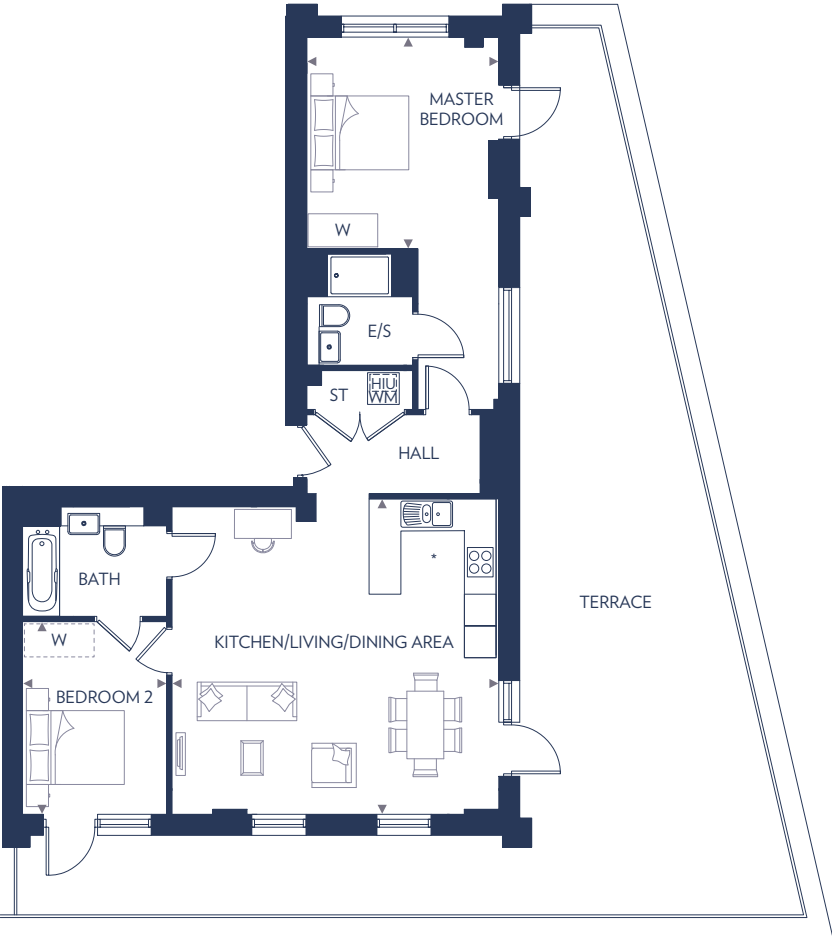
First Floor



Ground Floor

These floor plans are indicative only and depict a typical layout. The dimensions and layouts have been taken from the planning drawings issued, however the dimensions are subject to change following the issue of working drawings. Furniture is used to indicate positioning only. For exact plot specification, details of external and internal finishes, dimensions and floor plan differences consult your sales executive. All dimensions are + or – 100mm and floor plans are not shown to scale. *Kitchen layout may vary, please speak to a sales executive for details.

2 BEDROOM APARTMENT
PLOT 774

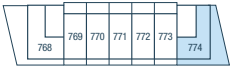


Kitchen/Living/Dining Area
6.17m x 5.96m (max) 20'3" x 19'6" (max)

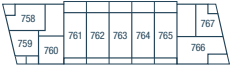
Master Bedroom
4.00m x 3.62m (max) 13'1" x 11'10" (max)

Bedroom 2
3.64m x 2.72m 11'11" x 8'11"

E/S – En Suite
HIU – Heat Interface Unit
ST – Store
W – Wardrobe
WM – Washing Machine



Fifth Floor



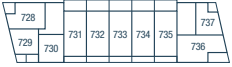
Fourth Floor



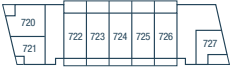
Third Floor



Second Floor



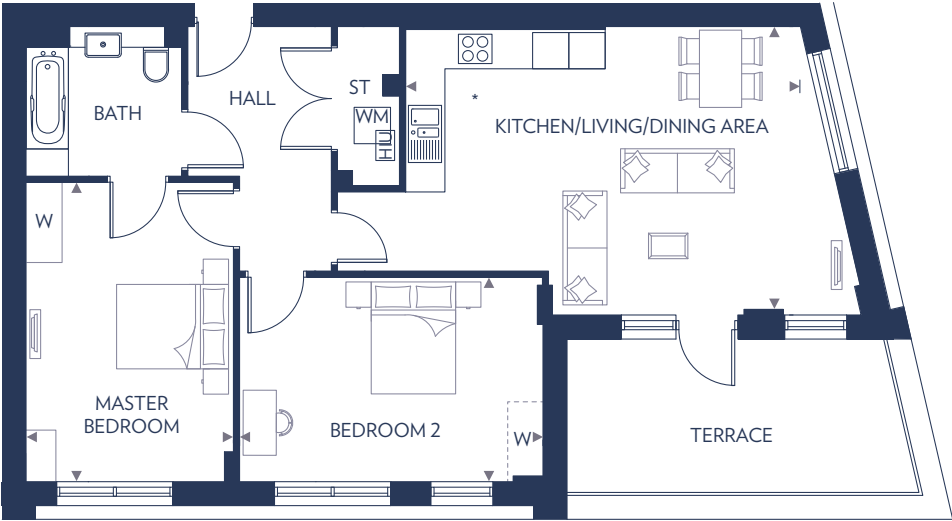
First Floor



Ground Floor

These floor plans are indicative only and depict a typical layout. The dimensions and layouts have been taken from the planning drawings issued, however the dimensions are subject to change following the issue of working drawings. Furniture is used to indicate positioning only. For exact plot specification, details of external and internal finishes, dimensions and floor plan differences consult your sales executive. All dimensions are + or – 100mm and floor plans are not shown to scale. *Kitchen layout may vary, please speak to a sales executive for details.

2 BEDROOM APARTMENT
PLOTS 736, 746, 756 & 766

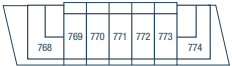


Kitchen/Living/Dining Area
6.52m x 4.77m 21'4" x 15'7"

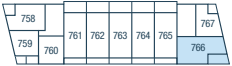
Master Bedroom
4.95m x 3.40m 16'2" x 11'2"

Bedroom 2
5.01m x 3.38m 16'5" x 11'1"

E/S – En Suite
HIU – Heat Interface Unit
ST – Store
W – Wardrobe
WM – Washing Machine



Fifth Floor



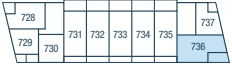
Fourth Floor



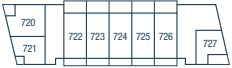
Third Floor



Second Floor



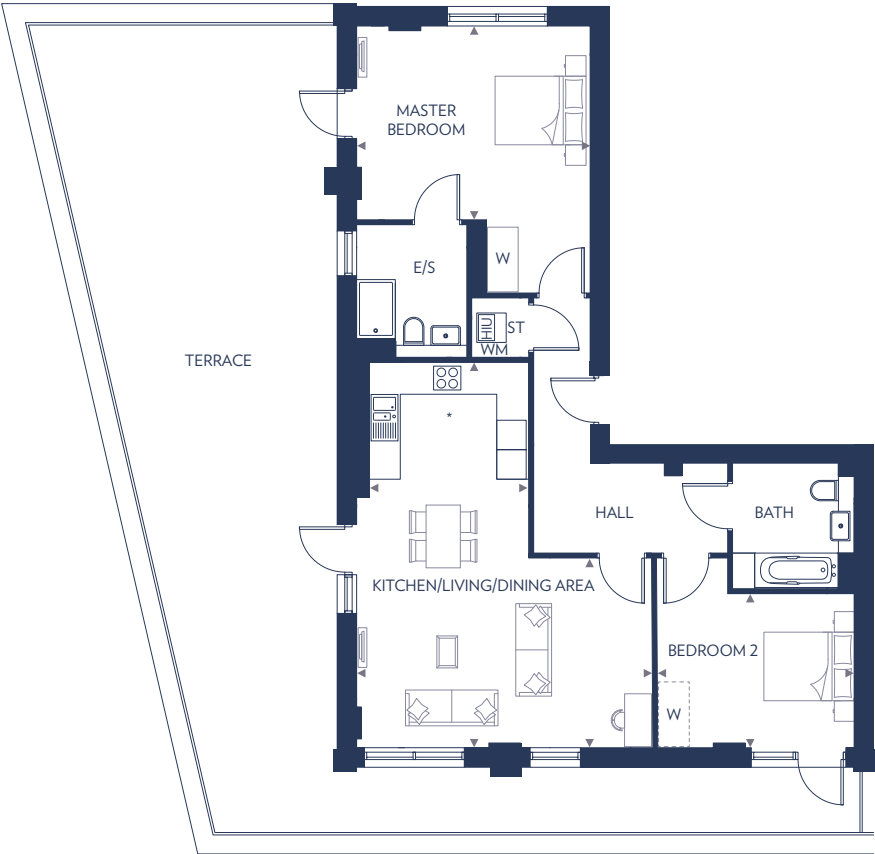
First Floor



Ground Floor

These floor plans are indicative only and depict a typical layout. The dimensions and layouts have been taken from the planning drawings issued, however the dimensions are subject to change following the issue of working drawings. Furniture is used to indicate positioning only. For exact plot specification, details of external and internal finishes, dimensions and floor plan differences consult your sales executive. All dimensions are + or – 100mm and floor plans are not shown to scale. *Kitchen layouts vary, please speak to a sales executive for details.

2 BEDROOM APARTMENT
PLOT 768



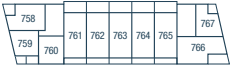
Kitchen/Living/Dining Area	7.84m (max) 3.86m (min) x 6.05m (max) 3.50m (min)	25'8" (max) 12'8" (min) x 19'10" (max) 11'5" (min)
Master Bedroom	4.75m x 3.94m	15'7" x 12'11"
Bedroom 2	3.97m x 3.13m	13'0" x 10'3"

E/S – En Suite
HIU – Heat Interface Unit
ST – Store
W – Wardrobe
WM – Washing Machine

These floor plans are indicative only and depict a typical layout. The dimensions and layouts have been taken from the planning drawings issued, however the dimensions are subject to change following the issue of working drawings. Furniture is used to indicate positioning only. For exact plot specification, details of external and internal finishes, dimensions and floor plan differences consult your sales executive. All dimensions are + or – 100mm and floor plans are not shown to scale. *Kitchen layout may vary, please speak to a sales executive for details.



Fifth Floor



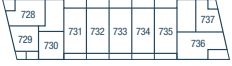
Fourth Floor



Third Floor



Second Floor



First Floor



Ground Floor



TRIATHLON POINT



1 BEDROOM APARTMENT
PLOTS 779, 790 & 805



Fifth Floor



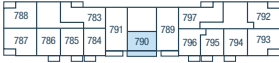
Fourth Floor



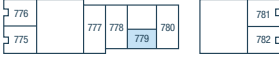
Third Floor



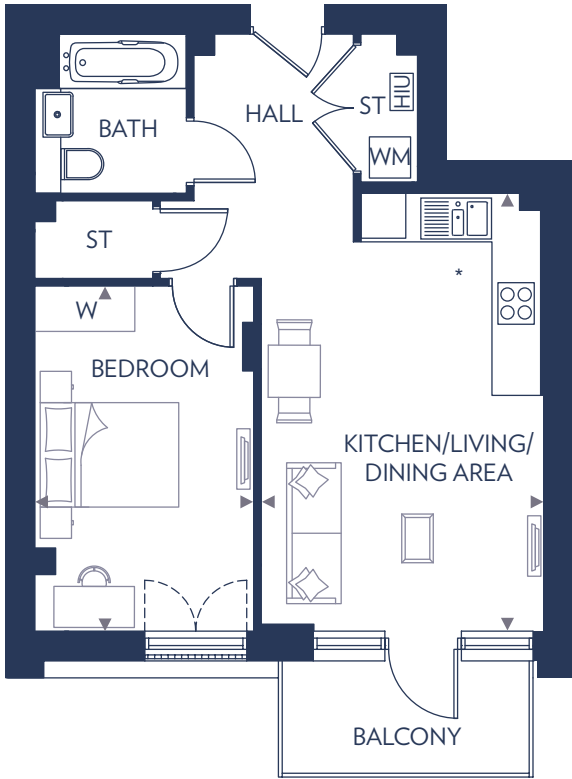
Second Floor



First Floor



1 BEDROOM APARTMENT
PLOTS 785, 795, 800 & 810



Fifth Floor



Fourth Floor



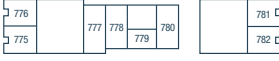
Third Floor



Second Floor



First Floor



Ground Floor

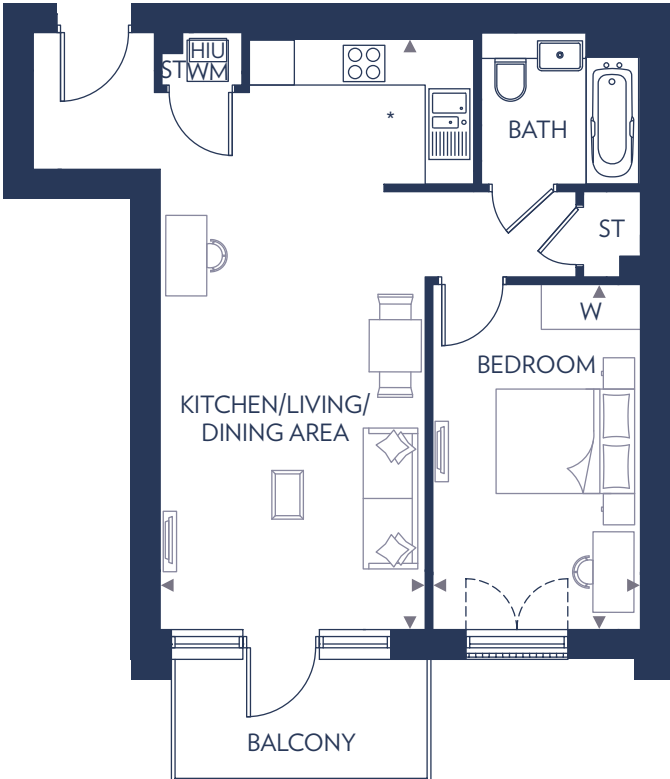
Kitchen/Living/Dining Area
5.82m x 3.78m 19'1" x 12'4"

Bedroom
4.61m x 2.92m 15'1" x 9'7"

HIU – Heat Interface Unit
ST – Store
W – Wardrobe
WM – Washing Machine

These floor plans are indicative only and depict a typical layout. The dimensions and layouts have been taken from the planning drawings issued, however the dimensions are subject to change following the issue of working drawings. Furniture is used to indicate positioning only. For exact plot specification, details of external and internal finishes, dimensions and floor plan differences consult your sales executive. All dimensions are + or – 100mm and floor plans are not shown to scale. Plots 795 & 810 are handed. *Kitchen layouts vary, please speak to a sales executive for details.

1 BEDROOM APARTMENT
PLOTS 784, 796, 799 & 811



Fifth Floor



Fourth Floor



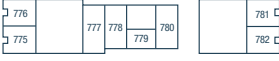
Third Floor



Second Floor



First Floor



Ground Floor

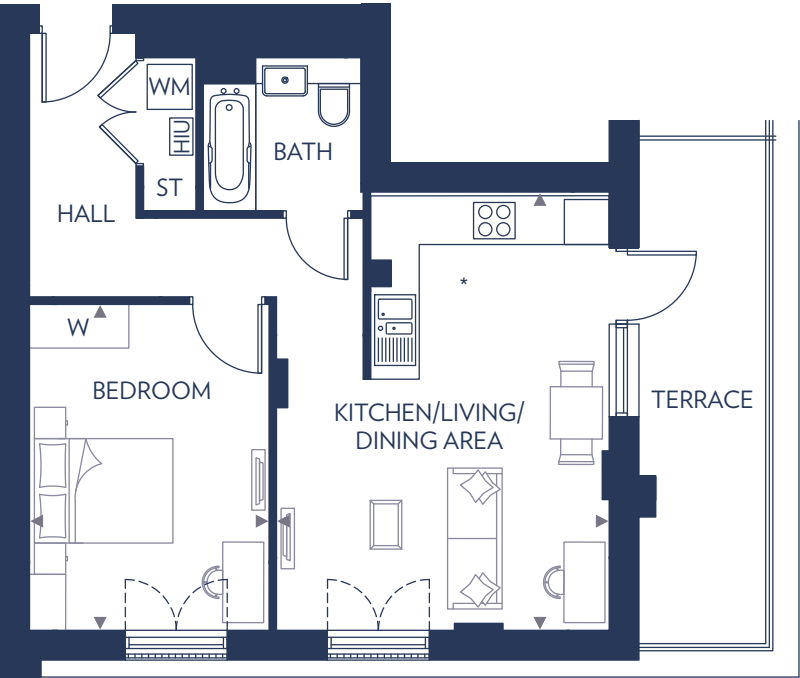
Kitchen/Living/Dining Area
7.90m x 3.54m 25'11" x 11'7"

Bedroom
4.61m x 2.77m 15'1" x 9'1"

HIU – Heat Interface Unit
ST – Store
W – Wardrobe
WM – Washing Machine

These floor plans are indicative only and depict a typical layout. The dimensions and layouts have been taken from the planning drawings issued, however the dimensions are subject to change following the issue of working drawings. Furniture is used to indicate positioning only. For exact plot specification, details of external and internal finishes, dimensions and floor plan differences consult your sales executive. All dimensions are + or – 100mm and floor plans are not shown to scale. Plots 796 & 811 are handed. *Kitchen layouts vary, please speak to a sales executive for details.

1 BEDROOM APARTMENT
PLOTS 829 & 836



Fifth Floor



Fourth Floor



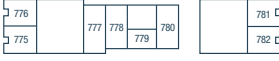
Third Floor



Second Floor



First Floor



Ground Floor

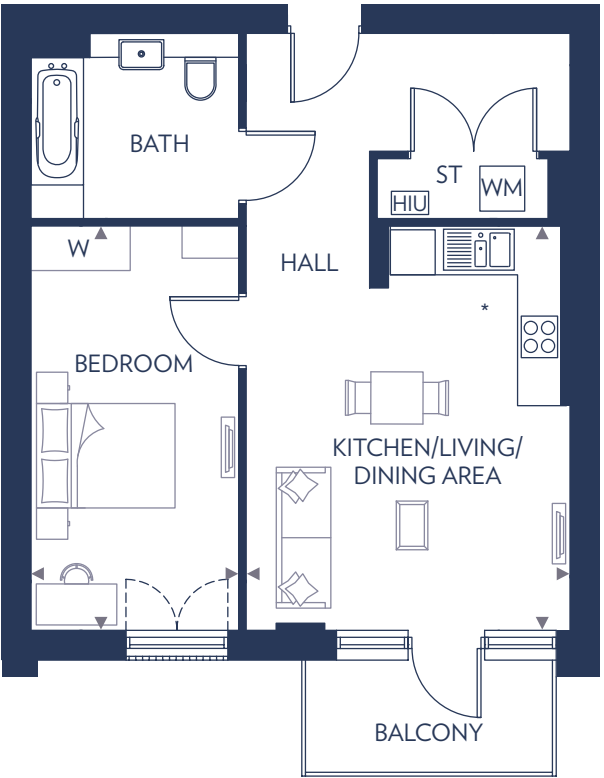
Kitchen/Living/Dining Area
5.78m x 4.44m (max) 18'11" x 14'7" (max)

Bedroom
4.35m x 3.20m 14'3" x 10'6"

HIU – Heat Interface Unit
ST – Store
W – Wardrobe
WM – Washing Machine

These floor plans are indicative only and depict a typical layout. The dimensions and layouts have been taken from the planning drawings issued, however the dimensions are subject to change following the issue of working drawings. Furniture is used to indicate positioning only. For exact plot specification, details of external and internal finishes, dimensions and floor plan differences consult your sales executive. All dimensions are + or – 100mm and floor plans are not shown to scale. Plot 836 is handed. *Kitchen layouts vary, please speak to a sales executive for details.

1 BEDROOM APARTMENT
PLOTS 786, 794, 801, 809,
815, 820, 825, 830 & 835



Fifth Floor



Fourth Floor



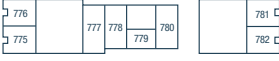
Third Floor



Second Floor



First Floor



Ground Floor

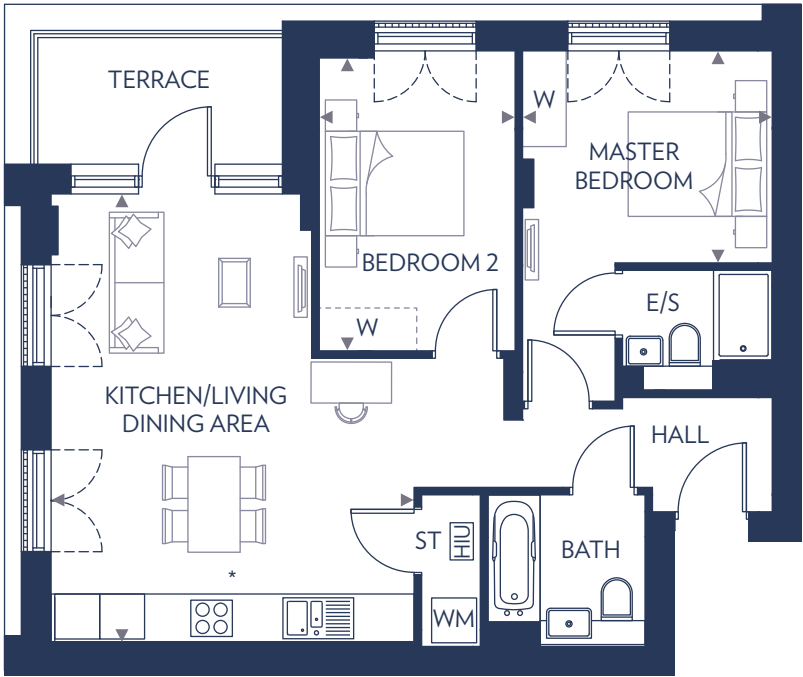
Kitchen/Living/Dining Area
5.40m x 4.32m 17'8" x 14'2"

Bedroom
5.40m x 2.77m 17'8" x 9'1"

HIU – Heat Interface Unit
ST – Store
W – Wardrobe
WM – Washing Machine

These floor plans are indicative only and depict a typical layout. The dimensions and layouts have been taken from the planning drawings issued, however the dimensions are subject to change following the issue of working drawings. Furniture is used to indicate positioning only. For exact plot specification, details of external and internal finishes, dimensions and floor plan differences consult your sales executive. All dimensions are + or – 100mm and floor plans are not shown to scale. Plots 794, 809, 820 & 830 are handed. *Kitchen layouts vary, please speak to a sales executive for details.

2 BEDROOM APARTMENT
PLOTS 788, 792, 803, 807, 817, 818 & 827



Fifth Floor



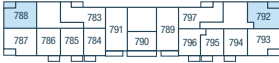
Fourth Floor



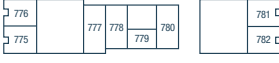
Third Floor



Second Floor



First Floor



Ground Floor

Kitchen/Living/Dining Area
5.96m x 4.85m (max) 19'7" x 15'10" (max)

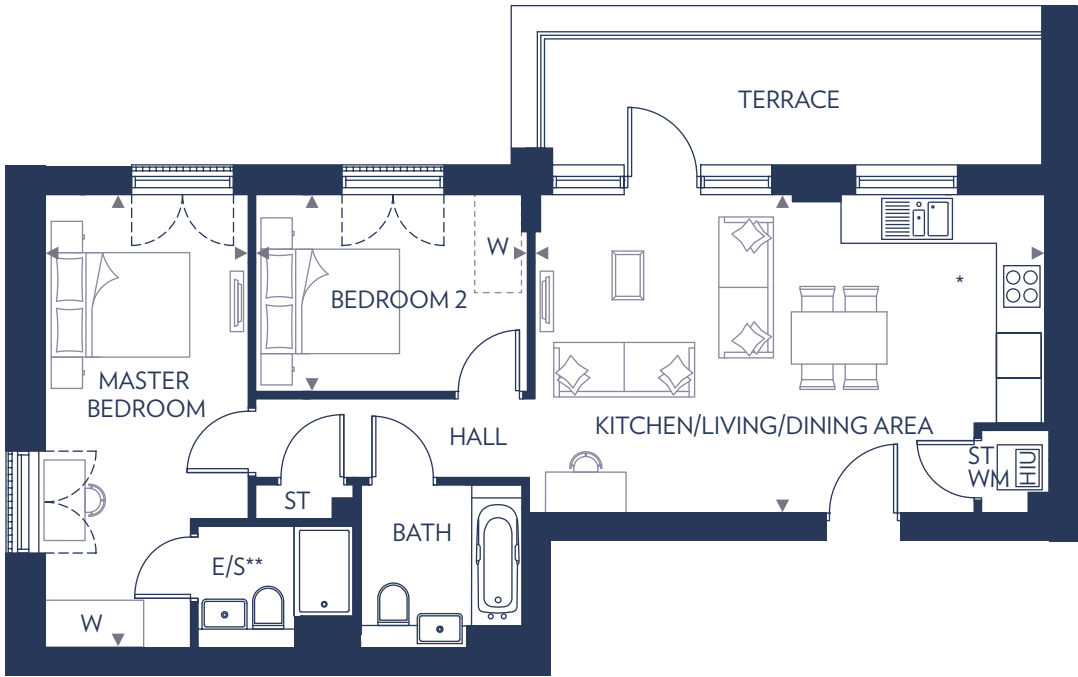
Master Bedroom
3.33m x 2.83m 10'11" x 9'3"

Bedroom 2
3.91m x 2.61m 12'10" x 8'7"

E/S – En Suite
HIU – Heat Interface Unit
ST – Store
W – Wardrobe
WM – Washing Machine

These floor plans are indicative only and depict a typical layout. The dimensions and layouts have been taken from the planning drawings issued, however the dimensions are subject to change following the issue of working drawings. Furniture is used to indicate positioning only. For exact plot specification, details of external and internal finishes, dimensions and floor plan differences consult your sales executive. All dimensions are + or - 100mm and floor plans are not shown to scale. Plots 792, 807 & 818 are handed. *Kitchen layouts vary, please speak to a sales executive for details.

2 BEDROOM APARTMENT
PLOTS 832 & 833



Fifth Floor



Fourth Floor



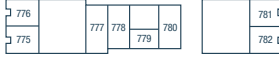
Third Floor



Second Floor



First Floor



Ground Floor

Kitchen/Living/Dining Area
6.79m x 4.25m 22'3" x 13'11"

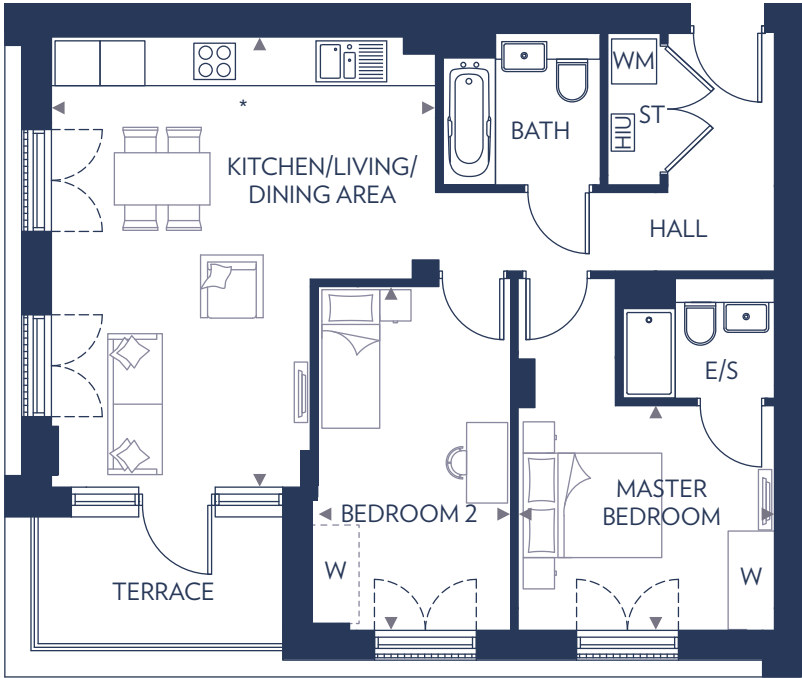
Master Bedroom
6.05m x 2.71m (max) 19'10" x 8'10" (max)

Bedroom 2
3.63m x 2.62m 11'10" x 8'7"

E/S – En Suite
HIU – Heat Interface Unit
ST – Store
W – Wardrobe
WM – Washing Machine

These floor plans are indicative only and depict a typical layout. The dimensions and layouts have been taken from the planning drawings issued, however the dimensions are subject to change following the issue of working drawings. Furniture is used to indicate positioning only. For exact plot specification, details of external and internal finishes, dimensions and floor plan differences consult your sales executive. All dimensions are + or - 100mm and floor plans are not shown to scale. Plot 833 is handed. *Kitchen layout may vary, please speak to a sales executive for details. **Layout of en suite varies. Please speak to a sales executive for details.

2 BEDROOM APARTMENT
PLOTS 787, 793, 802, 808, 816, 819 & 826



Kitchen/Living/Dining Area
5.98m x 5.13m (max) 19'7" x 16'10" (max)

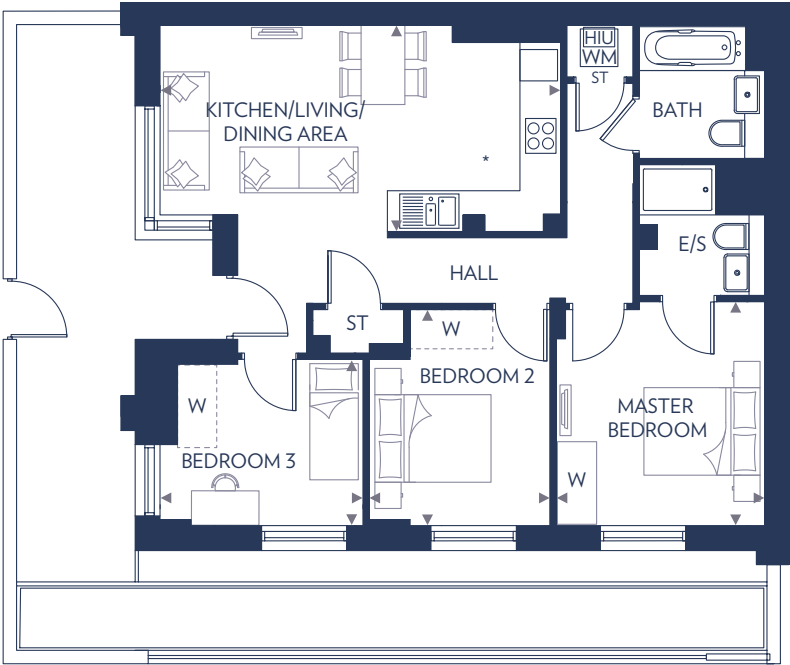
Master Bedroom
3.42m (max) x 3.00m 11'2" (max) x 9'10"

Bedroom 2
4.59m x 2.64m 15'0" x 8'8"

E/S – En Suite
HIU – Heat Interface Unit
ST – Store
W – Wardrobe
WM – Washing Machine

These floor plans are indicative only and depict a typical layout. The dimensions and layouts have been taken from the planning drawings issued, however the dimensions are subject to change following the issue of working drawings. Furniture is used to indicate positioning only. For exact plot specification, details of external and internal finishes, dimensions and floor plan differences consult your sales executive. All dimensions are + or - 100mm and floor plans are not shown to scale. Plots 793, 808 & 819 are handed. Dimensions to plots vary, please refer to customer plans. *Kitchen layouts vary, please speak to a sales executive for details.

3 BEDROOM APARTMENT
PLOTS 775, 776, 781 & 782



Kitchen/Living/Dining Area
6.38m x 3.28m 20'11" x 10'9"

Master Bedroom
3.55m x 3.32m 11'7" x 10'10"

Bedroom 2
3.44m x 2.87m 11'3" x 9'5"

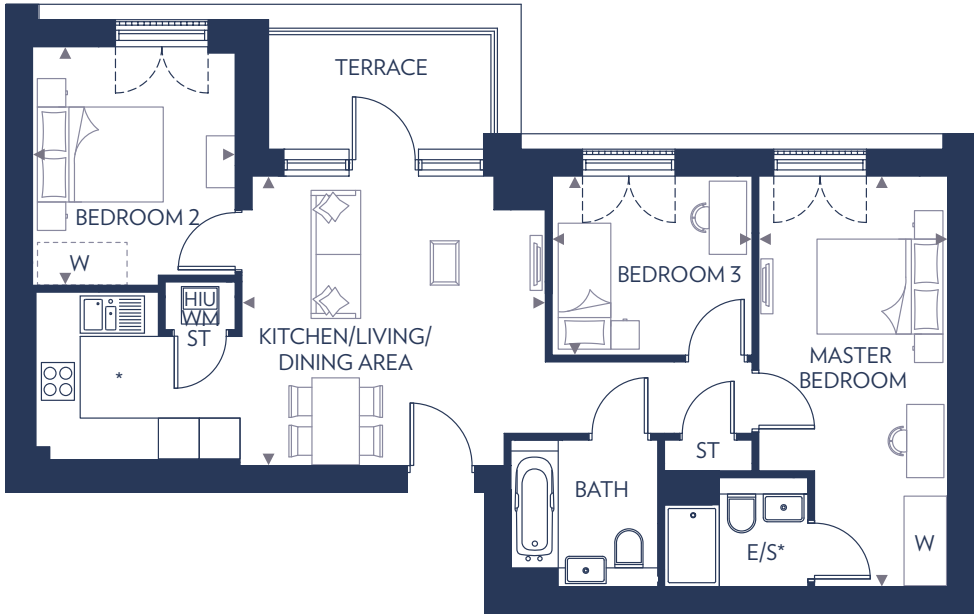
Bedroom 3
3.23m x 2.65m (max) 10'7" x 8'8" (max)

E/S – En Suite
HIU – Heat Interface Unit
ST – Store
W – Wardrobe
WM – Washing Machine

These floor plans are indicative only and depict a typical layout. The dimensions and layouts have been taken from the planning drawings issued, however the dimensions are subject to change following the issue of working drawings. Furniture is used to indicate positioning only. For exact plot specification, details of external and internal finishes, dimensions and floor plan differences consult your sales executive. All dimensions are + or - 100mm and floor plans are not shown to scale. Plots 781 & 782 are handed. *Kitchen sizes and layout may vary, please speak to a sales executive.



3 BEDROOM APARTMENT
PLOTS 783, 797, 798, 812, 813, 822 & 823

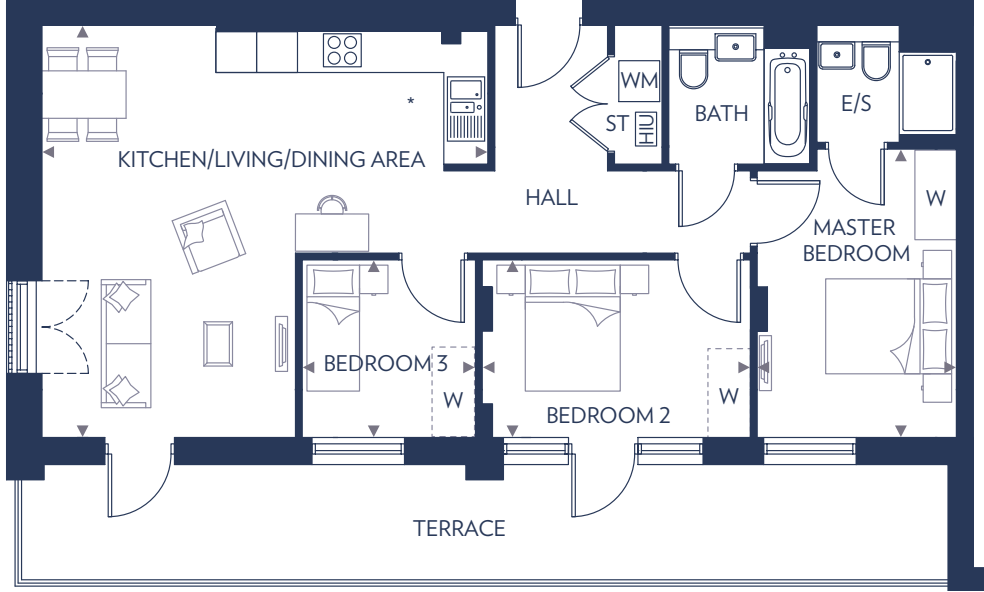


Kitchen/Living/Dining Area		
4.45m x 4.25m	14'7" x 13'11"	
Master Bedroom		
6.05m x 2.77m (max)	19'10" x 9'1" (max)	
Bedroom 2		
3.50m x 2.97m	11'6" x 9'9"	
Bedroom 3		
2.93m x 2.62m	9'7" x 8'7"	

E/S – En Suite
HIU – Heat Interface Unit
ST – Store
W – Wardrobe
WM – Washing Machine

These floor plans are indicative only and depict a typical layout. The dimensions and layouts have been taken from the planning drawings issued, however the dimensions are subject to change following the issue of working drawings. Furniture is used to indicate positioning only. For exact plot specification, details of external and internal finishes, dimensions and floor plan differences consult your sales executive. All dimensions are + or – 100mm and floor plans are not shown to scale. Plots 797, 812 & 822 are handed. *Kitchen layouts vary, please speak to a sales executive for details.

3 BEDROOM APARTMENT
PLOTS 831 & 834

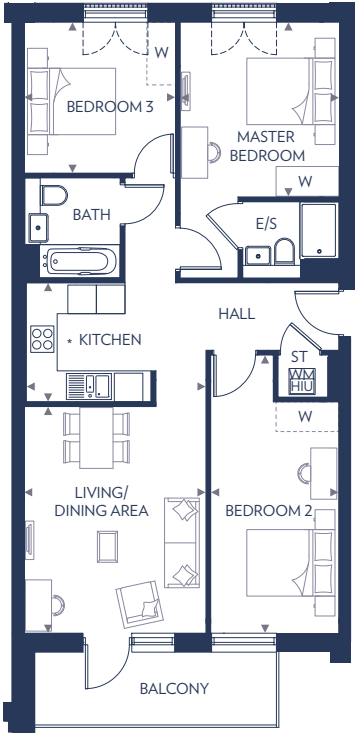


Kitchen/Living/Dining Area		
6.55m (max) x 6.06m (max)	21'6" (max) x 19'10" (max)	
Master Bedroom		
4.23m x 2.92m	13'10" x 9'7"	
Bedroom 2		
3.94m x 2.60m	12'11" x 8'6"	
Bedroom 3		
2.60m x 2.54m	8'6" x 8'4"	

E/S – En Suite
HIU – Heat Interface Unit
ST – Store
W – Wardrobe
WM – Washing Machine

These floor plans are indicative only and depict a typical layout. The dimensions and layouts have been taken from the planning drawings issued, however the dimensions are subject to change following the issue of working drawings. Furniture is used to indicate positioning only. For exact plot specification, details of external and internal finishes, dimensions and floor plan differences consult your sales executive. All dimensions are + or – 100mm and floor plans are not shown to scale. *Kitchen layouts vary, please speak to a sales executive for details.

3 BEDROOM APARTMENT
PLOTS 789, 791, 804 & 806



Kitchen	
3.82m x 2.50m	12'6" x 8'2"
Living/Dining Area	
4.75m x 3.82m	15'7" x 12'6"
Master Bedroom	
3.66m x 3.30m	12'0" x 10'10"
Bedroom 2	
5.84m (max) x 2.68m (max)	19'2" (max) x 8'9" (max)
Bedroom 3	
3.18m x 3.16m	10'5" x 10'4"

E/S – En Suite
HIU – Heat Interface Unit
ST – Store
W – Wardrobe
WM – Washing Machine



Fifth Floor



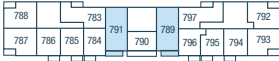
Fourth Floor



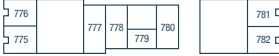
Third Floor



Second Floor

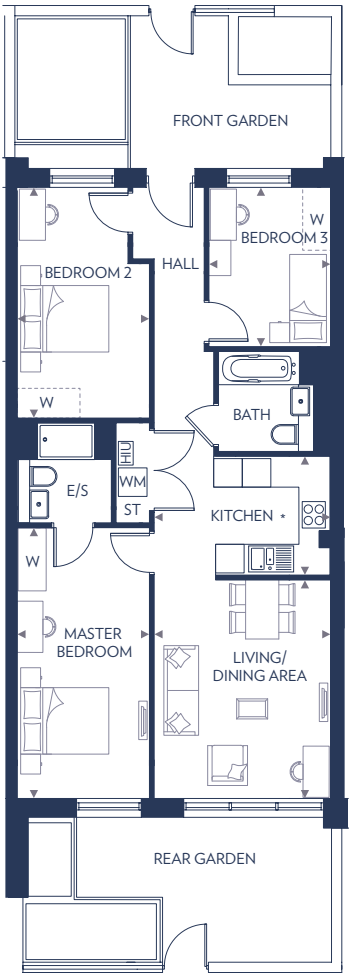


First Floor



Ground Floor

3 BEDROOM APARTMENT
PLOTS 778 & 780



Kitchen	
3.73m x 2.50m	12'3" x 8'2"
Living/Dining Area	
4.58m x 3.73m	15'0" x 12'3"
Master Bedroom	
5.68m x 2.77m	18'7" x 9'1"
Bedroom 2	
4.84m (max) x 2.77m (max)	15'10" (max) x 9'1" (max)
Bedroom 3	
3.34m x 2.56m	10'11" x 8'4"

E/S – En Suite
HIU – Heat Interface Unit
ST – Store
W – Wardrobe
WM – Washing Machine



Fifth Floor



Fourth Floor



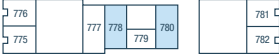
Third Floor



Second Floor



First Floor

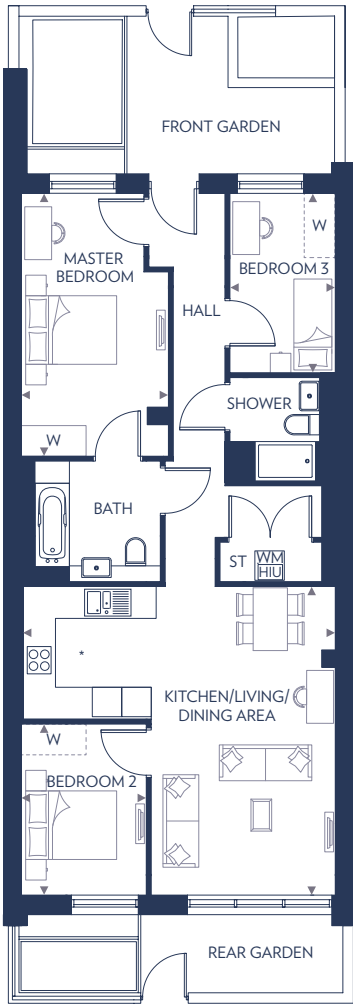


Ground Floor

These floor plans are indicative only and depict a typical layout. The dimensions and layouts have been taken from the planning drawings issued, however the dimensions are subject to change following the issue of working drawings. Furniture is used to indicate positioning only. For exact plot specification, details of external and internal finishes, dimensions and floor plan differences consult your sales executive. All dimensions are + or – 100mm and floor plans are not shown to scale. Plots 789 & 804 are handed. *Kitchen layouts vary, please speak to a sales executive for details.

These floor plans are indicative only and depict a typical layout. The dimensions and layouts have been taken from the planning drawings issued, however the dimensions are subject to change following the issue of working drawings. Furniture is used to indicate positioning only. For exact plot specification, details of external and internal finishes, dimensions and floor plan differences consult your sales executive. All dimensions are + or – 100mm and floor plans are not shown to scale. Plot 780 is handed. *Kitchen layouts vary, please speak to a sales executive for details.

3 BEDROOM APARTMENT
PLOT 777

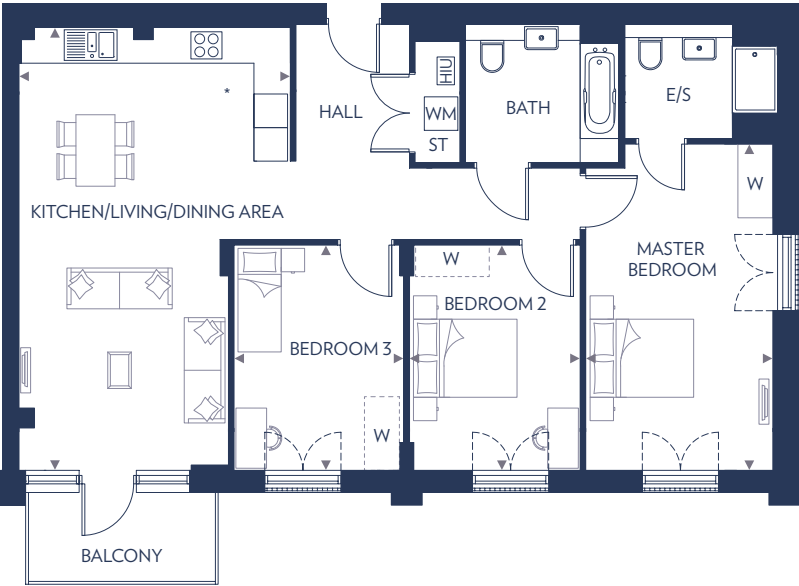


Kitchen/Living/Dining Area	
6.29m (max) x 6.28m (max)	20'7" (max) x 20'7" (max)
Master Bedroom	
5.35m x 3.00m (max)	17'6" x 9'10" (max)
Bedroom 2	
3.48m x 2.55m	11'5" x 8'4"
Bedroom 3	
3.65m x 2.14m	11'11" x 7'0"

HIU – Heat Interface Unit
ST – Store
W – Wardrobe
WM – Washing Machine

These floor plans are indicative only and depict a typical layout. The dimensions and layouts have been taken from the planning drawings issued, however the dimensions are subject to change following the issue of working drawings. Furniture is used to indicate positioning only. For exact plot specification, details of external and internal finishes, dimensions and floor plan differences consult your sales executive. All dimensions are + or – 100mm and floor plans are not shown to scale. *Kitchen layout may vary, please speak to a sales executive for details.

3 BEDROOM APARTMENT
PLOTS 814, 821 & 824



Kitchen/Living/Dining Area	
7.90m (max) x 4.85m (max)	25'11" (max) x 15'11" (max)
Master Bedroom	
5.83m x 3.34m	19'1" x 10'11"
Bedroom 2	
4.02m x 3.04m	13'2" x 10'0"
Bedroom 3	
4.02m x 3.03m	13'2" x 9'11"

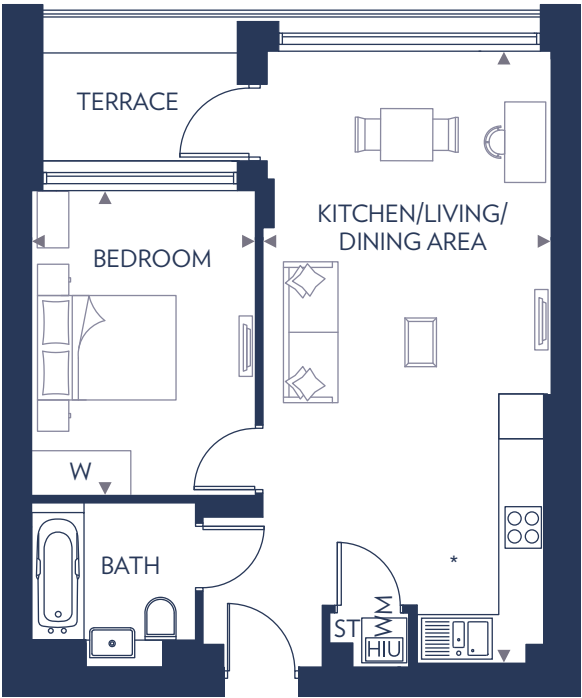
E/S – En Suite
HIU – Heat Interface Unit
ST – Store
W – Wardrobe
WM – Washing Machine

These floor plans are indicative only and depict a typical layout. The dimensions and layouts have been taken from the planning drawings issued, however the dimensions are subject to change following the issue of working drawings. Furniture is used to indicate positioning only. For exact plot specification, details of external and internal finishes, dimensions and floor plan differences consult your sales executive. All dimensions are + or – 100mm and floor plans are not shown to scale. Plot 821 is handed. *Kitchen layouts vary, please speak to a sales executive for details.

AUDAX HEIGHTS



1 BEDROOM APARTMENT
PLOTS 843, 844, 849, 850,
855, 856, 861, 862, 867 & 868



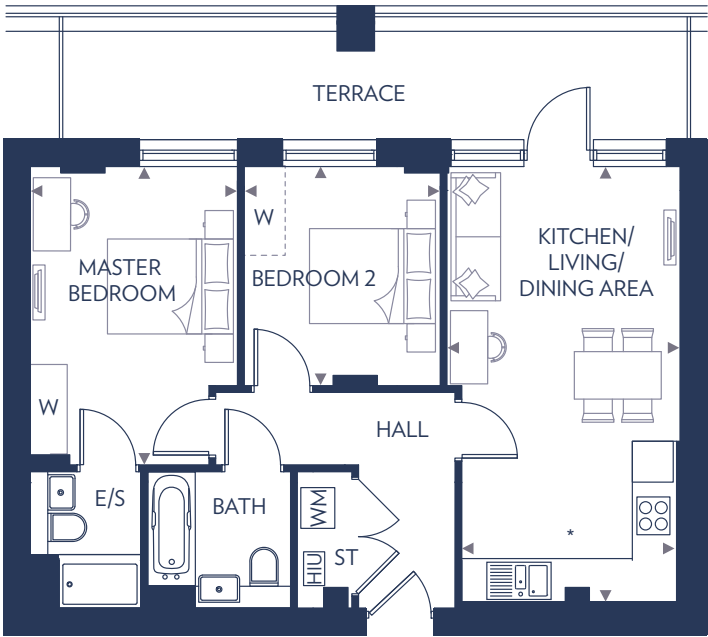
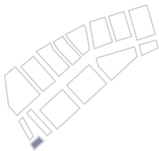
Kitchen/Living/Dining Area
8.15m x 3.85m 26'8" x 12'7"

Bedroom
4.07m x 2.99m 13'4" x 9'9"

HIU – Heat Interface Unit
ST – Store
W – Wardrobe
WM – Washing Machine

These floor plans are indicative only and depict a typical layout. The dimensions and layouts have been taken from the planning drawings issued, however the dimensions are subject to change following the issue of working drawings. Furniture is used to indicate positioning only. For exact plot specification, details of external and internal finishes, dimensions and floor plan differences consult your sales executive. All dimensions are + or – 100mm and floor plans are not shown to scale. Plots 844, 850, 856, 862 & 868 are handed. *Kitchen layouts vary, please speak to a sales executive for details.

2 BEDROOM APARTMENT
PLOTS 873 & 878



Kitchen/Living/Dining Area
6.39m x 3.42m (max) 3.13m (min) 20'11" x 11'2" (max) 10'3" (min)

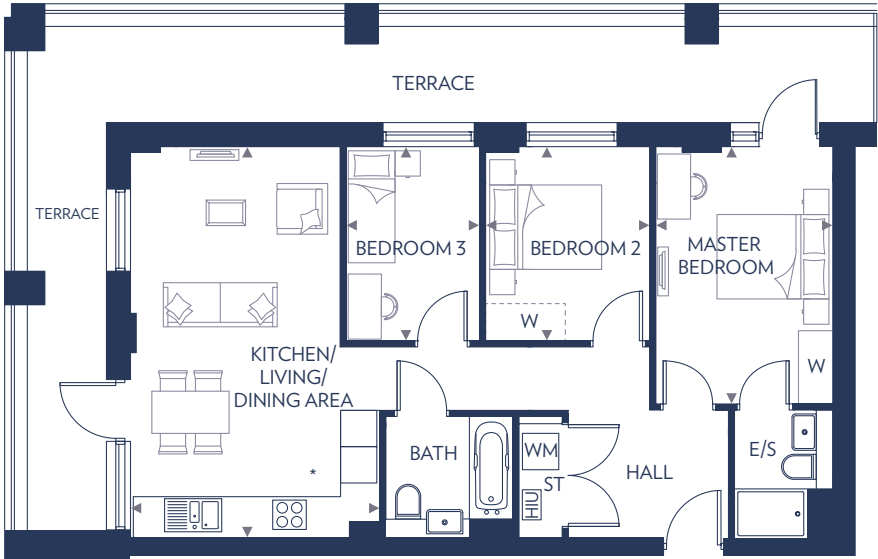
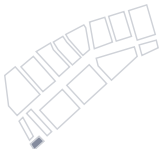
Master Bedroom
4.38m x 3.04m 14'4" x 9'11"

Bedroom 2
3.21m x 2.87m 10'6" x 9'5"

E/S – En Suite
HIU – Heat Interface Unit
ST – Store
W – Wardrobe
WM – Washing Machine

These floor plans are indicative only and depict a typical layout. The dimensions and layouts have been taken from the planning drawings issued, however the dimensions are subject to change following the issue of working drawings. Furniture is used to indicate positioning only. For exact plot specification, details of external and internal finishes, dimensions and floor plan differences consult your sales executive. All dimensions are + or – 100mm and floor plans are not shown to scale. *Kitchen layouts vary, please speak to a sales executive for details.

3 BEDROOM APARTMENT
PLOTS 872 & 877

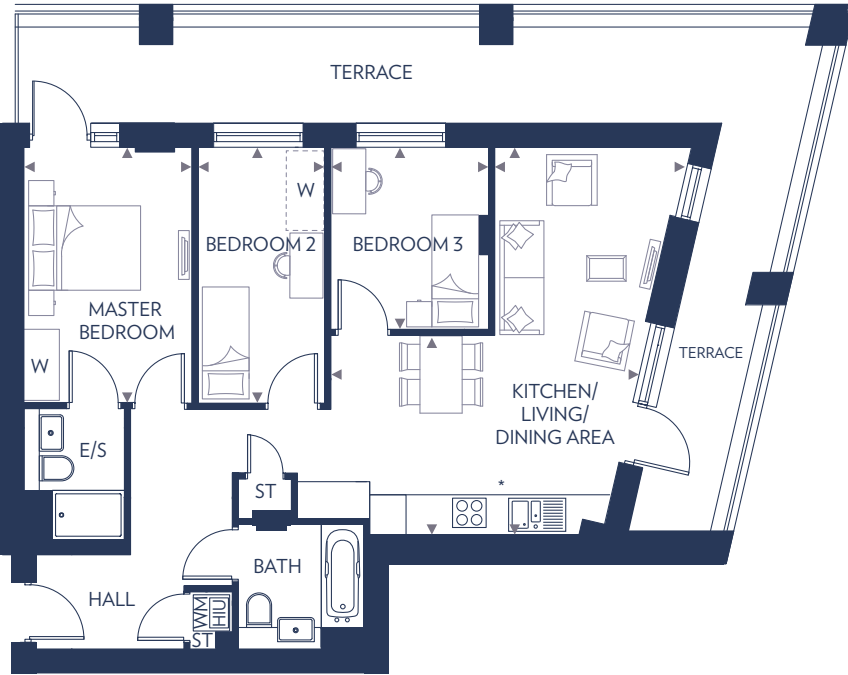
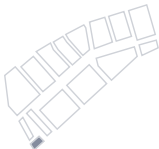


Kitchen/Living/Dining Area	
6.41m x 4.12m (max)	21'0" x 13'6" (max)
Master Bedroom	
4.28m x 2.92m	14'0" x 9'7"
Bedroom 2	
3.21m x 2.71m	10'6" x 8'10"
Bedroom 3	
3.21m x 2.19m	10'6" x 7'2"

E/S – En Suite
HIU – Heat Interface Unit
ST – Store
W – Wardrobe
WM – Washing Machine

These floor plans are indicative only and depict a typical layout. The dimensions and layouts have been taken from the planning drawings issued, however the dimensions are subject to change following the issue of working drawings. Furniture is used to indicate positioning only. For exact plot specification, details of external and internal finishes, dimensions and floor plan differences consult your sales executive. All dimensions are + or – 100mm and floor plans are not shown to scale. *Kitchen layouts vary, please speak to a sales executive for details.

3 BEDROOM APARTMENT
PLOTS 874 & 879

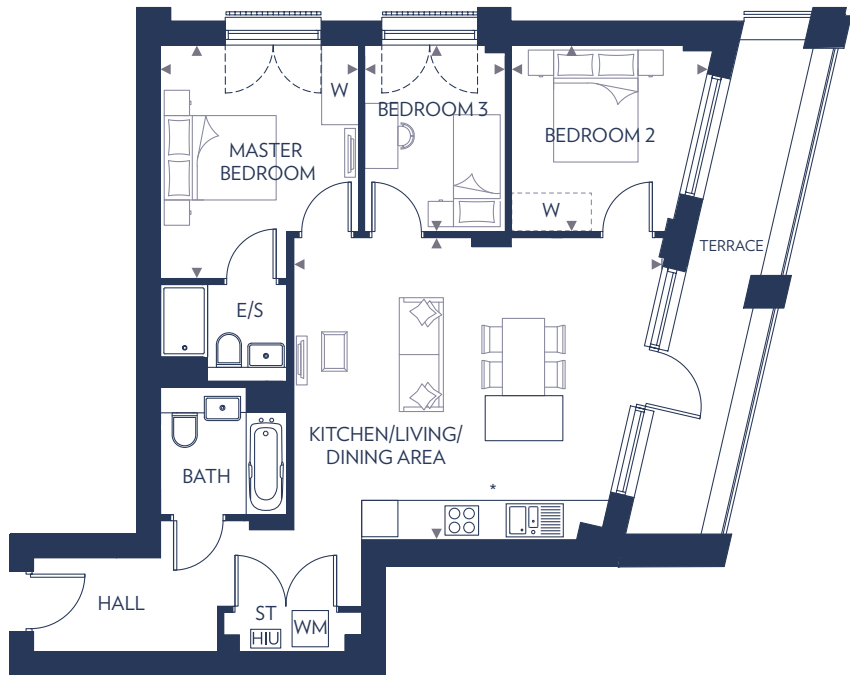


Kitchen/Living/Dining Area	
6.41m (max) 3.30m (min) x 5.12m (max) 3.19m (min)	21'0" (max) 10'10" (min) x 16'9" (max) 10'5" (min)
Master Bedroom	
4.23m x 2.77m	13'10" x 9'1"
Bedroom 2	
4.23m x 2.10m	13'10" x 6'10"
Bedroom 3	
3.01m x 2.61m	9'10" x 8'6"

E/S – En Suite
HIU – Heat Interface Unit
ST – Store
W – Wardrobe
WM – Washing Machine

These floor plans are indicative only and depict a typical layout. The dimensions and layouts have been taken from the planning drawings issued, however the dimensions are subject to change following the issue of working drawings. Furniture is used to indicate positioning only. For exact plot specification, details of external and internal finishes, dimensions and floor plan differences consult your sales executive. All dimensions are + or – 100mm and floor plans are not shown to scale. *Kitchen layouts vary, please speak to a sales executive for details.

3 BEDROOM APARTMENT
PLOTS 845, 851, 857, 863 & 869

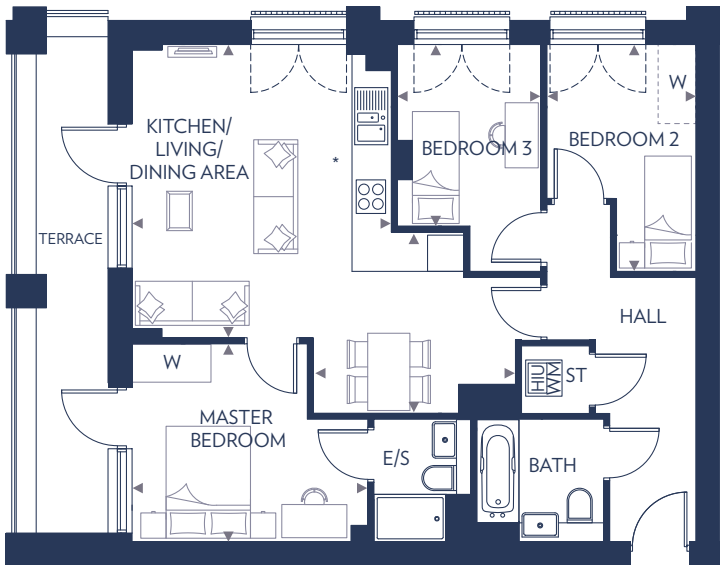
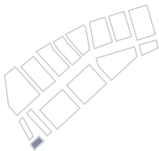


Kitchen/Living/Dining Area	
6.07m x 4.96m	19'11" x 16'3"
Master Bedroom	
3.85m x 3.26m	12'7" x 10'8"
Bedroom 2	
3.32m x 3.08m	10'11" x 10'1"
Bedroom 3	
3.08m x 2.32m	10'1" x 7'7"

E/S – En Suite
HIU – Heat Interface Unit
ST – Store
W – Wardrobe
WM – Washing Machine

These floor plans are indicative only and depict a typical layout. The dimensions and layouts have been taken from the planning drawings issued, however the dimensions are subject to change following the issue of working drawings. Furniture is used to indicate positioning only. For exact plot specification, details of external and internal finishes, dimensions and floor plan differences consult your sales executive. All dimensions are + or – 100mm and floor plans are not shown to scale. *Kitchen layouts vary, please speak to a sales executive for details.

3 BEDROOM APARTMENT
PLOTS 842, 848, 854, 860 & 866

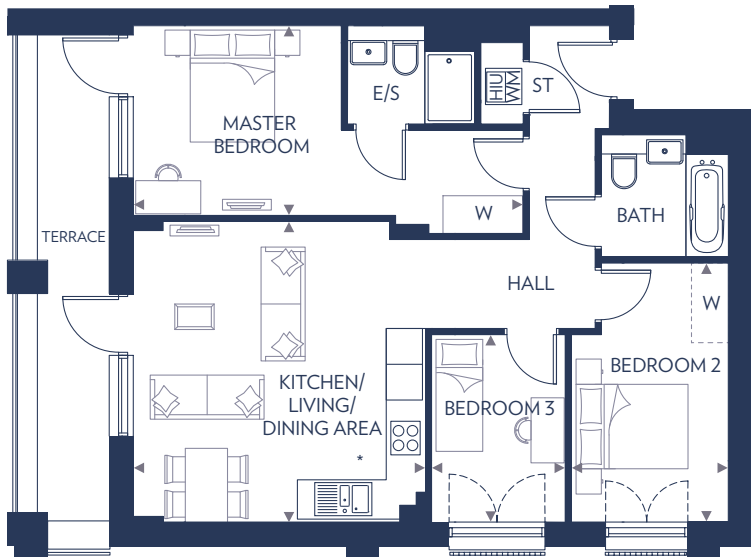
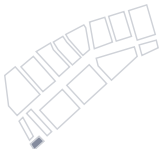


Kitchen/Living/Dining Area	
4.84m (max) 2.99m (min) x 4.28m (max) 3.33m (min)	15'10" (max) 9'9" (min) x 14'0" (max) 10'11" (min)
Master Bedroom	
3.89m x 3.27m	12'9" x 10'9"
Bedroom 2	
3.75m x 2.46m (max)	12'3" x 8'0" (max)
Bedroom 3	
3.00m x 2.37m	9'10" x 7'9"

E/S – En Suite
HIU – Heat Interface Unit
ST – Store
W – Wardrobe
WM – Washing Machine

These floor plans are indicative only and depict a typical layout. The dimensions and layouts have been taken from the planning drawings issued, however the dimensions are subject to change following the issue of working drawings. Furniture is used to indicate positioning only. For exact plot specification, details of external and internal finishes, dimensions and floor plan differences consult your sales executive. All dimensions are + or – 100mm and floor plans are not shown to scale. *Kitchen layouts vary, please speak to a sales executive for details.

3 BEDROOM APARTMENT
PLOTS 841, 847, 853, 859, 865, 871 & 876

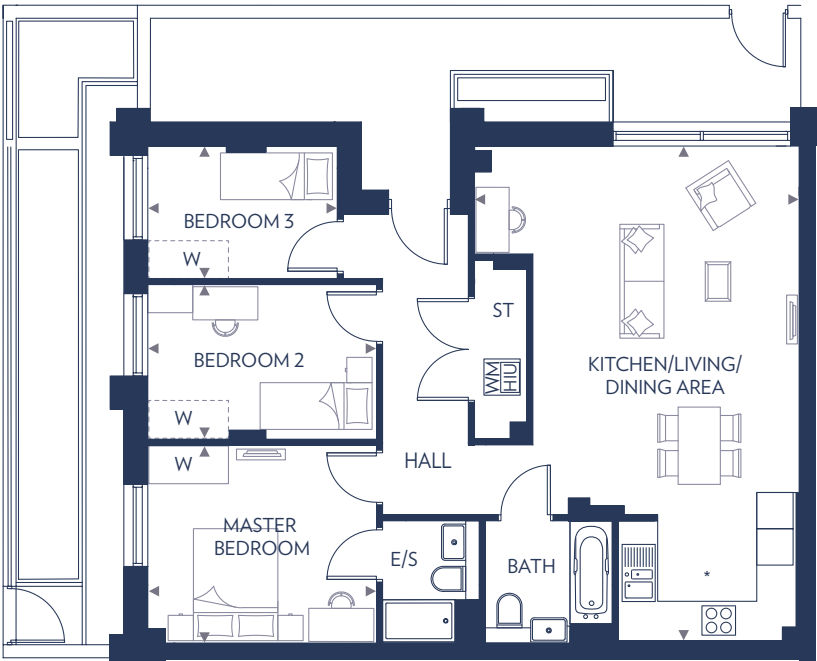
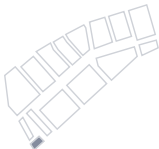


Kitchen/Living/Dining Area	16'3" x 15'10"
Master Bedroom	21'1" (max) x 10'3" (max)
Bedroom 2	14'0" x 8'6"
Bedroom 3	10'2" x 7'3"

E/S – En Suite
HIU – Heat Interface Unit
ST – Store
W – Wardrobe
WM – Washing Machine

These floor plans are indicative only and depict a typical layout. The dimensions and layouts have been taken from the planning drawings issued, however the dimensions are subject to change following the issue of working drawings. Furniture is used to indicate positioning only. For exact plot specification, details of external and internal finishes, dimensions and floor plan differences consult your sales executive. All dimensions are + or – 100mm and floor plans are not shown to scale. *Kitchen layouts vary, please speak to a sales executive for details.

3 BEDROOM APARTMENT
PLOT 839



Kitchen/Living/Dining Area	26'8" x 17'7" (max)
Master Bedroom	12'4" x 10'8"
Bedroom 2	12'4" x 8'4"
Bedroom 3	10'3" x 7'2"

E/S – En Suite
HIU – Heat Interface Unit
ST – Store
W – Wardrobe
WM – Washing Machine

These floor plans are indicative only and depict a typical layout. The dimensions and layouts have been taken from the planning drawings issued, however the dimensions are subject to change following the issue of working drawings. Furniture is used to indicate positioning only. For exact plot specification, details of external and internal finishes, dimensions and floor plan differences consult your sales executive. All dimensions are + or – 100mm and floor plans are not shown to scale. *Kitchen layout may vary, please speak to a sales executive for details.

3 BEDROOM APARTMENT
PLOT 838

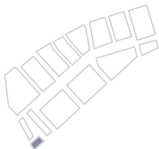


Kitchen/Living/Dining Area	8.11m (max) 4.82m (min) x 5.89m (max) 3.31m (min)	26'7" (max) 15'9" (min) x 19'4" (max) 10'10" (min)
Master Bedroom	3.96m x 3.27m	13'0" x 10'9"
Bedroom 2	3.78m x 2.55m	12'4" x 8'4"
Bedroom 3	3.13m x 2.17m	10'3" x 7'1"

E/S – En Suite
HIU – Heat Interface Unit
ST – Store
W – Wardrobe
WM – Washing Machine

These floor plans are indicative only and depict a typical layout. The dimensions and layouts have been taken from the planning drawings issued, however the dimensions are subject to change following the issue of working drawings. Furniture is used to indicate positioning only. For exact plot specification, details of external and internal finishes, dimensions and floor plan differences consult your sales executive. All dimensions are + or – 100mm and floor plans are not shown to scale. *Kitchen layout may vary, please speak to a sales executive for details.

3 BEDROOM APARTMENT
PLOTS 846, 852, 858, 864, 870, 875 & 880

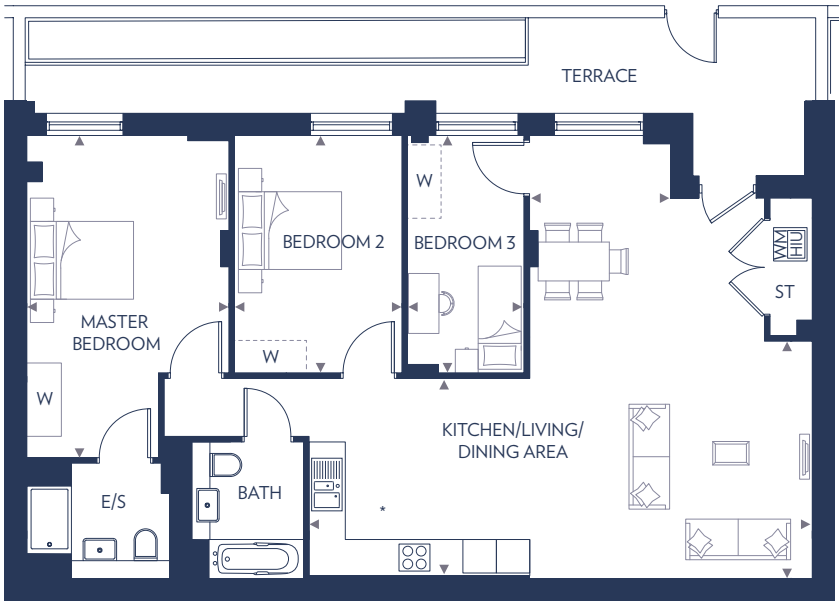
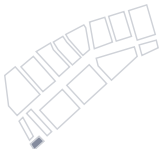


Kitchen/Living/Dining Area	8.13m (max) x 3.51m	26'8" (max) x 11'6"
Master Bedroom	3.83m x 3.80m	12'6" x 12'5"
Bedroom 2	3.83m x 2.45m	12'6" x 8'0"
Bedroom 3	3.83m x 2.29m	12'6" x 7'6"

E/S – En Suite
HIU – Heat Interface Unit
ST – Store
W – Wardrobe
WM – Washing Machine

These floor plans are indicative only and depict a typical layout. The dimensions and layouts have been taken from the planning drawings issued, however the dimensions are subject to change following the issue of working drawings. Furniture is used to indicate positioning only. For exact plot specification, details of external and internal finishes, dimensions and floor plan differences consult your sales executive. All dimensions are + or – 100mm and floor plans are not shown to scale. *Kitchen layouts vary, please speak to a sales executive for details.

3 BEDROOM APARTMENT
PLOT 840



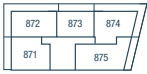
Kitchen/Living/Dining Area	
9.02m (max) 2.54m (min) x 4.20m (max) 3.54m (min)	29'7" (max) 8'4" (min) x 13'9" (max) 11'7" (min)
Master Bedroom	
5.77m x 3.62m (max)	18'11" x 11'10" (max)
Bedroom 2	
4.25m x 3.00m	13'11" x 9'10"
Bedroom 3	
4.25m x 2.09m	13'11" x 6'10"

E/S – En Suite
HIU – Heat Interface Unit
ST – Store
W – Wardrobe
WM – Washing Machine

These floor plans are indicative only and depict a typical layout. The dimensions and layouts have been taken from the planning drawings issued, however the dimensions are subject to change following the issue of working drawings. Furniture is used to indicate positioning only. For exact plot specification, details of external and internal finishes, dimensions and floor plan differences consult your sales executive. All dimensions are + or – 100mm and floor plans are not shown to scale. *Kitchen layout may vary, please speak to a sales executive for details.



Seventh Floor



Sixth Floor



Fifth Floor



Fourth Floor



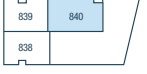
Third Floor



Second Floor



First Floor



Ground Floor



CHOBHAM MANOR

PHASE 4

PRICE LIST

1 BEDROOM APARTMENTS

Housetype	Property Description	Plot	Price	Tenure	Estimated Build Completion
Triathlon Point	1 bedroom apartment	779	£475,000	Leasehold	Dec 21 / Jan 22
Triathlon Point	1 bedroom apartment	784	£475,000	Leasehold	Dec 21 / Jan 22
Triathlon Point	1 bedroom apartment	785	£470,000	Leasehold	Dec 21 / Jan 22
Triathlon Point	1 bedroom apartment	786	£475,000	Leasehold	Dec 21 / Jan 22
Triathlon Point	1 bedroom apartment	790	£475,000	Leasehold	Dec 21 / Jan 22
Triathlon Point	1 bedroom apartment	794	£475,000	Leasehold	Dec 21 / Jan 22
Triathlon Point	1 bedroom apartment	795	£470,000	Leasehold	Dec 21 / Jan 22
Triathlon Point	1 bedroom apartment	796	£475,000	Leasehold	Dec 21 / Jan 22
Triathlon Point	1 bedroom apartment	799	£477,000	Leasehold	Dec 21 / Jan 22
Triathlon Point	1 bedroom apartment	800	£473,000	Leasehold	Dec 21 / Jan 22
Triathlon Point	1 bedroom apartment	801	£477,000	Leasehold	Dec 21 / Jan 22
Triathlon Point	1 bedroom apartment	805	£477,000	Leasehold	Dec 21 / Jan 22

Housetype	Property Description	Plot	Price	Tenure	Estimated Build Completion
Triathlon Point	1 bedroom apartment	809	£477,000	Leasehold	Apr / May 22
Triathlon Point	1 bedroom apartment	810	£473,000	Leasehold	Apr / May 22
Triathlon Point	1 bedroom apartment	811	£477,000	Leasehold	Apr / May 22
Triathlon Point	1 bedroom apartment	815	£479,000	Leasehold	Apr / May 22
Triathlon Point	1 bedroom apartment	820	£479,000	Leasehold	May / Jun 22
Triathlon Point	1 bedroom apartment	825	£482,000	Leasehold	May / Jun 22
Triathlon Point	1 bedroom apartment	828	£484,000	Leasehold	May / Jun 22
Triathlon Point	1 bedroom apartment	829	£479,000	Leasehold	May / Jun 22
Triathlon Point	1 bedroom apartment	830	£483,000	Leasehold	May / Jun 22
Triathlon Point	1 bedroom apartment	835	£487,000	Leasehold	May / Jun 22
Triathlon Point	1 bedroom apartment	836	£483,000	Leasehold	May / Jun 22
Triathlon Point	1 bedroom apartment	837	£488,000	Leasehold	May / Jun 22

2 BEDROOM APARTMENTS

Housetype	Property Description	Plot	Price	Tenure	Estimated Build Completion
Triathlon Point	2 bedroom apartment	787	£580,000	Leasehold	Dec 21 / Jan 22
Triathlon Point	2 bedroom apartment	788	£577,000	Leasehold	Dec 21 / Jan 22
Triathlon Point	2 bedroom apartment	792	£577,000	Leasehold	Dec 21 / Jan 22
Triathlon Point	2 bedroom apartment	793	£580,000	Leasehold	Dec 21 / Jan 22
Triathlon Point	2 bedroom apartment	802	£582,000	Leasehold	Dec 21 / Jan 22
Triathlon Point	2 bedroom apartment	803	£579,000	Leasehold	Dec 21 / Jan 22
Triathlon Point	2 bedroom apartment	807	£579,000	Leasehold	Dec 21 / Jan 22
Triathlon Point	2 bedroom apartment	808	£582,000	Leasehold	Dec 21 / Jan 22

Housetype	Property Description	Plot	Price	Tenure	Estimated Build Completion
Triathlon Point	2 bedroom apartment	816	£584,000	Leasehold	May / Jun 22
Triathlon Point	2 bedroom apartment	817	£581,000	Leasehold	May / Jun 22
Triathlon Point	2 bedroom apartment	818	£582,000	Leasehold	May / Jun 22
Triathlon Point	2 bedroom apartment	819	£584,000	Leasehold	May / Jun 22
Triathlon Point	2 bedroom apartment	826	£586,000	Leasehold	May / Jun 22
Triathlon Point	2 bedroom apartment	827	£584,000	Leasehold	May / Jun 22
Triathlon Point	2 bedroom apartment	832	£589,000	Leasehold	May / Jun 22
Triathlon Point	2 bedroom apartment	833	£592,000	Leasehold	May / Jun 22

3 BEDROOM APARTMENTS

Housetype	Property Description	Plot	Price	Tenure	Estimated Build Completion
Triathlon Point	3 bedroom apartment	775	£595,000	Leasehold	Dec 21 / Jan 22
Triathlon Point	3 bedroom apartment	776	£595,000	Leasehold	Dec 21 / Jan 22
Triathlon Point	3 bedroom apartment	777	£617,000	Leasehold	Dec 21 / Jan 22
Triathlon Point	3 bedroom apartment	778	£610,000	Leasehold	Dec 21 / Jan 22
Triathlon Point	3 bedroom apartment	780	£610,000	Leasehold	Dec 21 / Jan 22
Triathlon Point	3 bedroom apartment	781	£595,000	Leasehold	Dec 21 / Jan 22
Triathlon Point	3 bedroom apartment	782	£595,000	Leasehold	Dec 21 / Jan 22
Triathlon Point	3 bedroom apartment	783	£595,000	Leasehold	Dec 21 / Jan 22
Triathlon Point	3 bedroom apartment	789	£605,000	Leasehold	Dec 21 / Jan 22
Triathlon Point	3 bedroom apartment	791	£605,000	Leasehold	Dec 21 / Jan 22
Triathlon Point	3 bedroom apartment	797	£595,000	Leasehold	Dec 21 / Jan 22
Triathlon Point	3 bedroom apartment	798	£597,000	Leasehold	Dec 21 / Jan 22

Housetype	Property Description	Plot	Price	Tenure	Estimated Build Completion
Triathlon Point	3 bedroom apartment	804	£607,000	Leasehold	Dec 21 / Jan 22
Triathlon Point	3 bedroom apartment	806	£607,000	Leasehold	Apr / May 22
Triathlon Point	3 bedroom apartment	812	£597,000	Leasehold	Apr / May 22
Triathlon Point	3 bedroom apartment	813	£599,000	Leasehold	Apr / May 22
Triathlon Point	3 bedroom apartment	814	£634,000	Leasehold	Apr / May 22
Triathlon Point	3 bedroom apartment	821	£634,000	Leasehold	May / Jun 22
Triathlon Point	3 bedroom apartment	822	£599,000	Leasehold	May / Jun 22
Triathlon Point	3 bedroom apartment	823	£600,000	Leasehold	May / Jun 22
Triathlon Point	3 bedroom apartment	824	£636,000	Leasehold	May / Jun 22
Triathlon Point	3 bedroom apartment	831	£609,000	Leasehold	May / Jun 22
Triathlon Point	3 bedroom apartment	834	£611,000	Leasehold	May / Jun 22

PARK VIEWS

Housetype	Property Description	Plot	Price	Tenure	Estimated Build Completion
Criterion House	1 bedroom apartment	729	£508,000	Leasehold	Mar / Apr 2022
Criterion House	1 bedroom apartment	739	£510,000	Leasehold	Mar / Apr 2022
Criterion House	1 bedroom apartment	750	£514,000	Leasehold	Mar / Apr 2022
Criterion House	3 bedroom apartment	732	£642,000	Leasehold	Mar / Apr 2022
Criterion House	3 bedroom apartment	743	£644,000	Leasehold	Mar / Apr 2022
Criterion House	3 bedroom apartment	755	£646,000	Leasehold	Mar / Apr 2022
Criterion House	2 bedroom apartment	736	£635,000	Leasehold	Mar / Apr 2022
Criterion House	2 bedroom apartment	746	£642,000	Leasehold	Mar / Apr 2022



BUILT ON THE OLYMPIC LEGACY AND DESIGNED TO REVOLUTIONISE CITY LIVING



In accordance with the Consumer Protection from Unfair Trading Practices Regulations 2008, the information contained in this document is provided for general guidance only, and does not form the whole or any part of any offer or contract. These floor plans are indicative only and depict typical layouts. The dimensions and layouts have been taken from the planning drawings issued, however the dimensions are subject to change following the issue of working drawings. Furniture is used to indicate positioning only. For exact plot specification, details of external and internal finishes, dimensions and floor plan differences consult your sales executive. All dimensions are + or - 50mm and floor plans are not shown to scale. Customers are strongly advised to contact a Taylor Wimpey representative for further details and to satisfy themselves as to their accuracy. All information and computer representations contained in this document are taken from design intent material and may be subject to further design development. September 2020. Designed by Focus IMC.

CHOBHAM MANOR

Queen Elizabeth Olympic Park,
1 Hyett Terrace,
Honour Lea Avenue,
Stratford, London, E20 1HH

020 3535 6987

chobhammanor.co.uk

L&Q

**Taylor
Wimpey**