



HEATHY WOOD
COPTHORNE

PURE





THE BARLOW - PURE

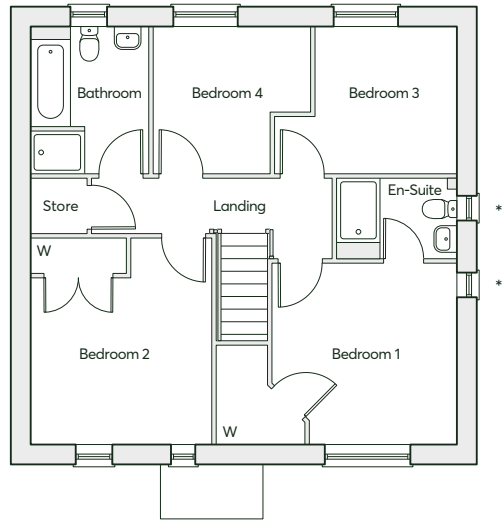
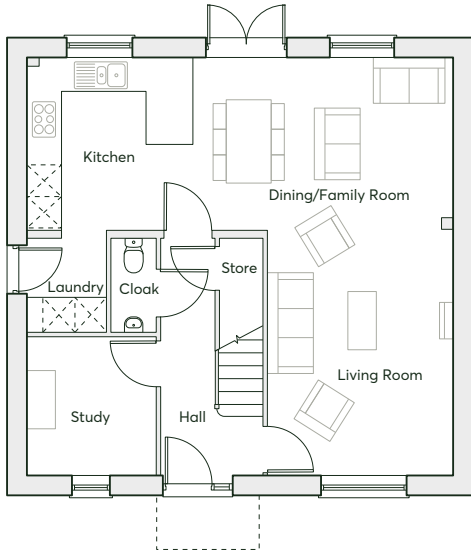
4 bedroom detached home
Single garage
2 parking spaces

1379 sqft

If you're looking for space to entertain family and friends, look no further than The Barlow - Pure. At the heart of this home is a generous open-plan kitchen and dining room, perfect for special get togethers. Floor-to-ceiling windows feature across this property, immersing the home with natural light and creating a peaceful environment.

WITH FEATURES WE LOVE

- Energy efficient Nest Learning Thermostat
- Smart Ring 2 Video Doorbell
- Walk-in wardrobe and en-suite in the master bedroom
- Separate shower cubicle to bath in the family bathroom
- Large open-plan ground floor space



1379 sqft

*Plot specific windows

GROUND FLOOR

Kitchen/Dining/Family Room	8.06m × 3.29m	26'5" × 10'9"
Living Room	4.57m × 3.51m	15'0" × 11'6"
Study	2.65m × 2.45m	8'8" × 8'0"
Laundry	1.77m × 1.50m	5'10" × 4'11"

FIRST FLOOR

Bedroom 1	3.51m(max) × 3.45m	11'6"(max) × 11'4"
Bedroom 2	3.92m × 3.42m	12'10" × 11'3"
Bedroom 3	2.66m(min) × 2.78m	8'8"(min) × 9'1"
Bedroom 4	2.80m × 2.99m(max)	9'2" × 9'9"(max)
Bathroom	2.80m × 2.23m	9'2" × 7'4"
En-suite	2.28m × 1.52m	7'6" × 5'0"



THE HIERO - PURE

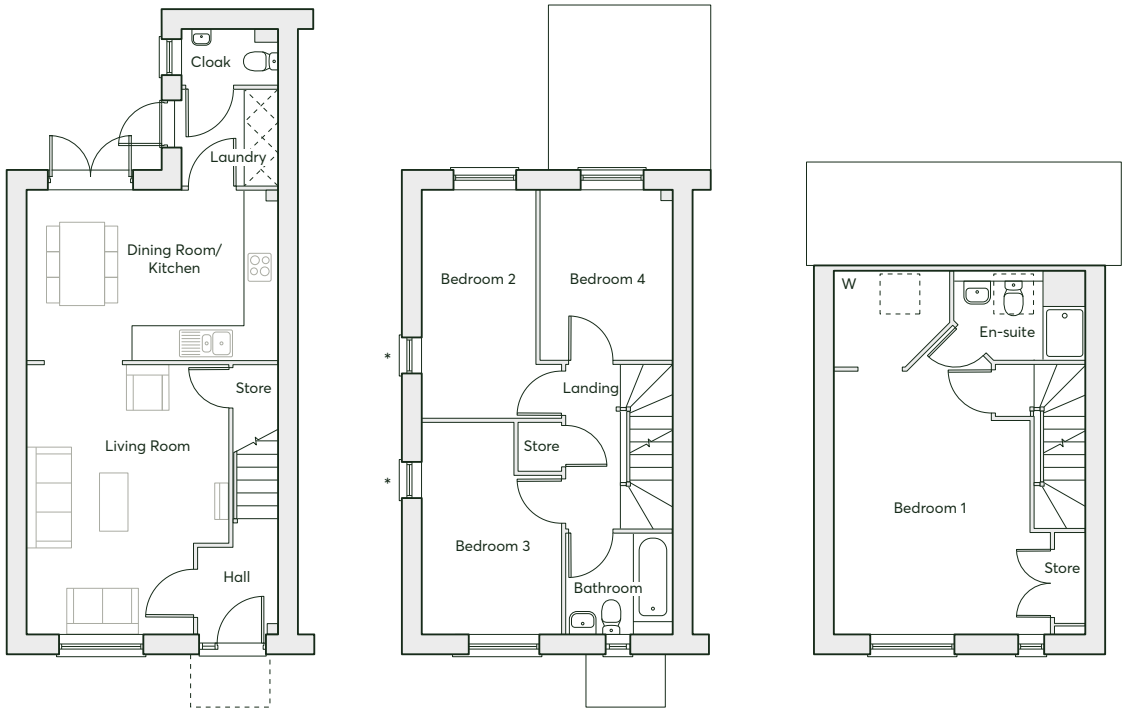
4 bedroom
semi-detached home
Single garage
2 parking spaces

1272 sqft

The Hiero - Pure has been designed to incorporate all aspects of family living. For those that love to socialise, the large open-plan kitchen, dining and living room opens out to the rear garden – perfect for those long summer evenings. The master bedroom is on its own floor, offering a welcoming space to relax and unwind.

WITH FEATURES WE LOVE

- Energy efficient Nest Learning Thermostat
- Smart Ring 2 Video Doorbell
- Walk-in wardrobe and en-suite in the master bedroom
- Large open-plan kitchen, dining and living room with French doors leading to the garden
- Floor-to-ceiling windows



*Plot specific windows

1272 sqft

GROUND FLOOR

Kitchen	4.76m × 3.22m	15'7" × 10'7"
Living Room	5.09m × 3.82m	16'8" × 12'6"
Laundry	1.83m × 1.81m	6'0" × 5'11"

FIRST FLOOR

Bedroom 2	4.31m × 2.15m	14'2" × 7'1"
Bedroom 3	3.97m × 2.65m	13'0" × 8'8"
Bedroom 4	3.22m × 2.52m	10'7" × 8'3"
Bathroom	2.02m × 1.91m	6'8" × 6'3"

SECOND FLOOR

Bedroom 1	4.97m × 4.07m	16'4" × 13'4"
Ensuite	2.50m × 1.69m	8'3" × 5'7"



THE BECKET - PURE

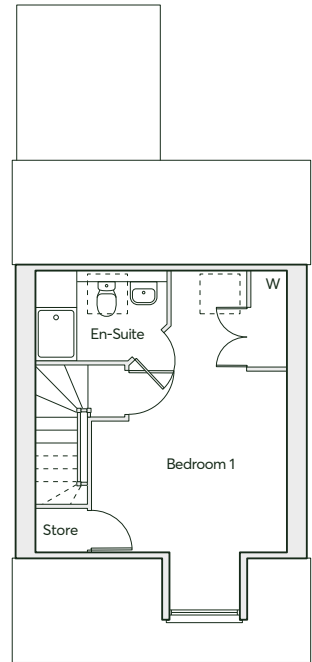
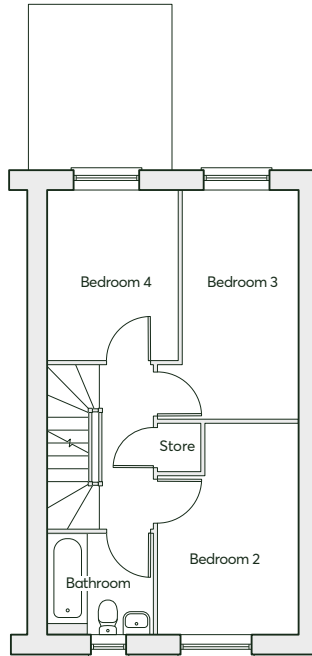
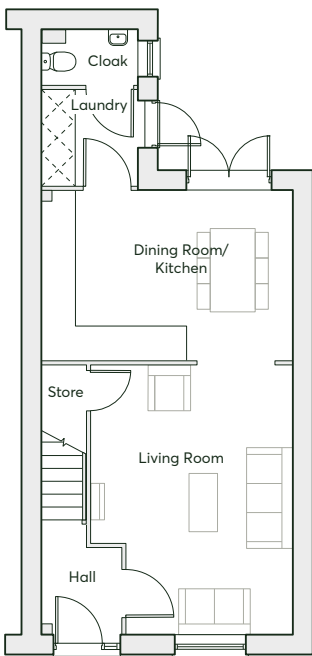
4 bedroom
semi-detached home
Single garage
2 parking spaces

1210 sqft

The Becket - Pure is the epitome of modern living. Featuring floor-to-ceiling windows, this 4 bedroom home is fully immersed with natural light. The master bedroom is on its own floor and is a haven you can retreat to at the end of a busy day.

WITH FEATURES WE LOVE

- Energy efficient Nest Learning Thermostat
- Smart Ring 2 Video Doorbell
- Master bedroom with en-suite and built-in wardrobe
- Open-plan kitchen, dining and living room with French doors leading to the garden
- Dedicated laundry room



1210 sqft

*Plot specific windows

GROUND FLOOR

Kitchen/Dining Room	4.76m × 3.22m	15'7" × 10'7"
Living Room	5.09m × 3.82m	16'8" × 12'6"
Laundry	1.83m × 1.81m	6'0" × 5'11"

FIRST FLOOR

Bedroom 3	4.31m × 2.15m	14'2" × 7'1"
Bedroom 2	3.97m × 2.65m	13'0" × 8'8"
Bedroom 4	3.22m × 2.52m	10'7" × 8'3"
Bathroom	2.02m × 1.91m	6'8" × 6'3"

SECOND FLOOR

Bedroom 1	5.35m × 3.68m(max)	17'7" × 12'1"(max)
En-suite	2.50m × 1.69m(max)	8'3" × 5'7"(max)



THE EDWEN - PURE

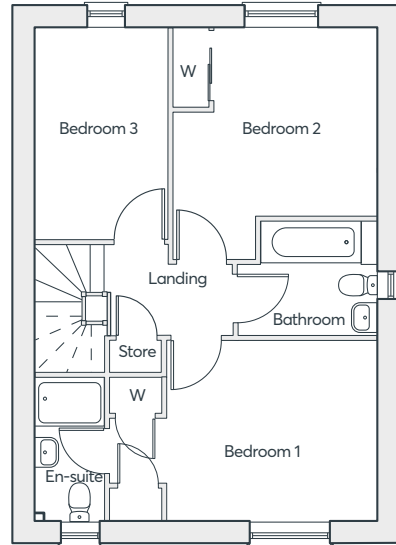
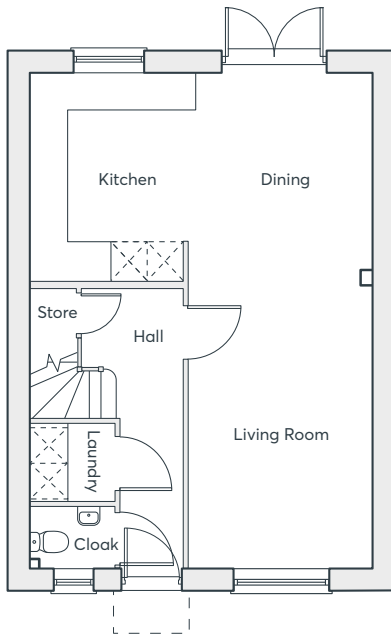
3 bedroom detached home
Single garage
2 parking spaces

1050 sqft

The Edwen - Pure is a versatile and stylish home, perfect for welcoming friends and family. The open-plan kitchen, dining and living room provides a sociable space to entertain or unwind. Floor-to-ceiling windows flood the home with light, giving it a spacious and airy feel.

WITH FEATURES WE LOVE

- Energy efficient Nest Learning Thermostat
- Smart Ring 2 Video Doorbell
- Open-plan kitchen, dining and living room with French doors leading to the garden
- Dedicated laundry room
- Master bedroom with en-suite and built-in wardrobe
- Large welcoming entrance hall



1050 sqft

*Plot specific windows

GROUND FLOOR

Kitchen/Dining Room	5.81m × 3.55m	19'1" × 11'8"
Living Room	3.01m × 4.85m	10'1" × 15'11"
Laundry	1.45m × 1.30m	4'9" × 4'3"

FIRST FLOOR

Bedroom 1	4.52m × 3.08m	14'10" × 10'1"
Bedroom 2	3.21m × 3.48m	10'6" × 11'5"
Bedroom 3	3.61m × 2.28m	11'10" × 7'6"
Bathroom	2.37m × 1.94m	7'8" × 6'3"
En-suite	2.44m × 1.20m	8'0" × 3'11"



THE KEA - PURE v1

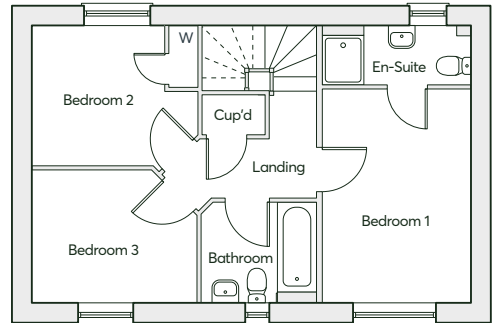
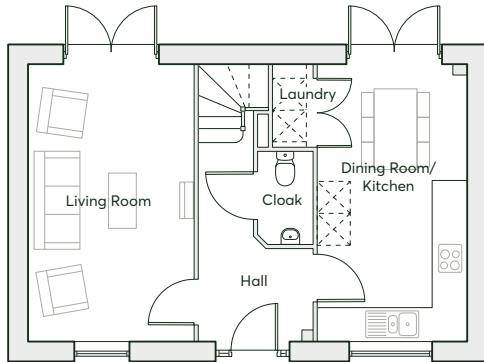
3 bedroom detached home
Single garage
2 parking spaces

936 sqft

The Kea - Pure v1 is a contemporary home which has been lovingly designed to incorporate all aspects of modern living. For those that love to socialise, the spacious living room opens out to the rear garden – perfect for those long summer evenings. The master bedroom offers a serene space for rest and relaxation.

WITH FEATURES WE LOVE

- Energy efficient Nest Learning Thermostat
- Smart Ring 2 Video Doorbell
- Master bedroom with en-suite
- Open-plan kitchen and dining room



936 sqft

GROUND FLOOR	Kitchen/Dining Room	5.25m × 2.81m	17'3" × 9'3"
	Living Room	5.25m × 3.12m	17'3" × 10'3"
FIRST FLOOR	Bedroom 1	4.11m × 2.79m	13'6" × 9'2"
	Bedroom 2	3.12m × 2.66m	10'3" × 8'9"
	Bedroom 3	3.19m × 2.50m	10'6" × 8'2"
	Bathroom	2.10m × 1.90m	6'11" × 6'3"
	En-suite	2.79m × 1.06m	9'2" × 3'6"



THE KEA - PURE v2

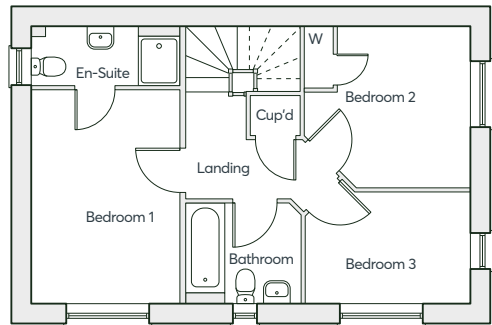
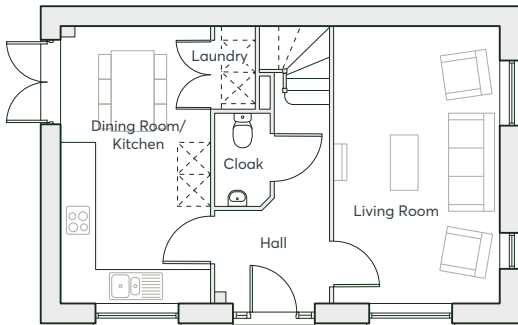
3 bedroom detached home
Single garage
2 parking spaces

936 sqft

The Kea - Pure v2 has been designed with modern living in mind. The bright, spacious rooms are full of natural light, providing a warm, calming environment. The generous open-plan kitchen and dining room is the ideal place for entertaining family and friends whilst the spacious master bedroom, featuring a Juliet balcony, offers a serene space for rest and relaxation.

WITH FEATURES WE LOVE

- Energy efficient Nest Learning Thermostat
- Smart Ring 2 Video Doorbell
- Master bedroom with en-suite
- Open-plan kitchen and dining room
- Juliet balcony
- Separate family bathroom



936 sqft

GROUND FLOOR

Kitchen/Dining Room	5.25m × 2.81m	17'3" × 9'3"
Living Room	5.25m × 3.12m	17'3" × 10'3"

FIRST FLOOR

Bedroom 1	4.11m × 2.79m	13'6" × 9'2"
Bedroom 2	3.12m × 2.66m	10'3" × 8'9"
Bedroom 3	3.19m × 2.50m	10'6" × 8'2"
Bathroom	2.10m × 1.90m	6'11" × 6'3"
En-suite	2.79m × 1.06m	9'2" × 3'6"



THE WEBSTER - PURE

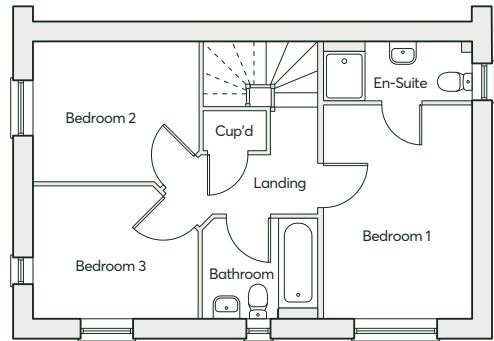
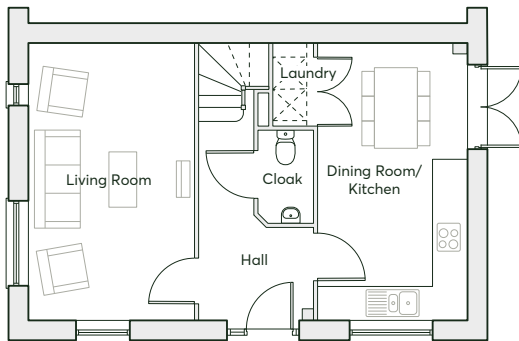
3 bedroom
semi-detached home
2 parking spaces

936 sqft

The Webster - Pure has been thoughtfully designed to provide a peaceful living space. Floor-to-ceiling windows immerse the home with natural light. The open-plan kitchen and dining room, with French doors opening to the garden, is at the heart of the home and is the ideal place for entertaining family and friends.

WITH FEATURES WE LOVE

- Energy efficient Nest Learning Thermostat
- Smart Ring 2 Video Doorbell
- Master bedroom with en-suite
- Large open-plan kitchen and dining room with French doors leading to the garden



936 sqft

GROUND FLOOR

Kitchen/Dining Room	5.25m × 2.81m	17'3" × 9'3"
Living Room	5.25m × 3.12m	17'3" × 10'3"

FIRST FLOOR

Bedroom 1	4.11m × 2.79m	13'6" × 9'2"
Bedroom 2	3.12m × 2.66m	10'3" × 8'9"
Bedroom 3	3.19m × 2.50m	10'6" × 8'2"
Bathroom	2.10m × 1.90m	6'11" × 6'3"
En-suite	2.79m × 1.06m	9'2" × 3'6"



THE HOUGHTON - PURE

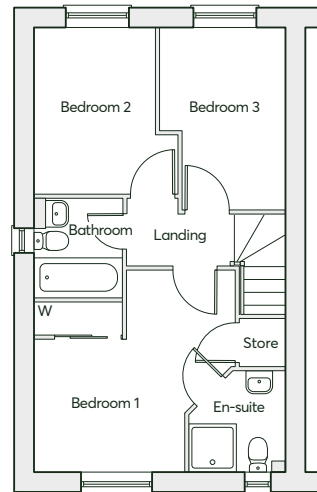
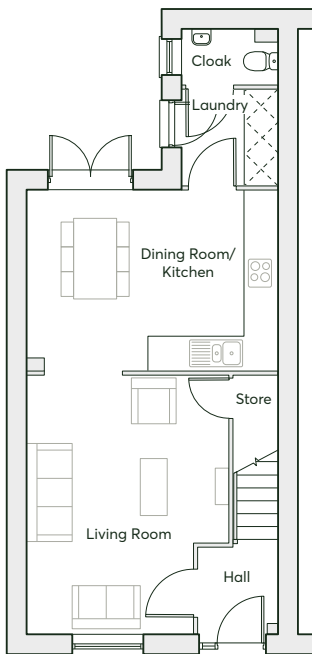
3 bedroom
semi-detached home
2 parking spaces

920 sqft

The Houghton - Pure is the essence of modern open-plan living. The living room connects seamlessly with the kitchen and dining area, creating a spacious living environment, perfect for those who love entertaining. The master bedroom is a haven away from the hustle and bustle of everyday life.

WITH FEATURES WE LOVE

- Energy efficient Nest Learning Thermostat
- Smart Ring 2 Video Doorbell
- Open-plan kitchen, dining and living room
- Master bedroom with en-suite and built-in wardrobe
- French doors into the garden



920 sqft

GROUND FLOOR

Kitchen/Dining Room	4.76m × 3.44m	15'7" × 11'3"
Living Room	4.87m × 3.82m	16'0" × 12'6"
Laundry	1.83m × 1.81m	6'0" × 5'11"

FIRST FLOOR

Bedroom 1	3.19m(max) × 2.87m(min)	10'6"(max) × 9'5"(min)
Bedroom 2	3.13m × 2.30m(min)	10'3" × 7'6"(min)
Bedroom 3	3.44m × 2.38m(max)	11'3" × 7'10"(max)
Bathroom	1.87m × 1.70m	6'2" × 5'7"
En-suite	1.92m × 1.81m	6'4" × 5'11"



THE JASPER - PURE

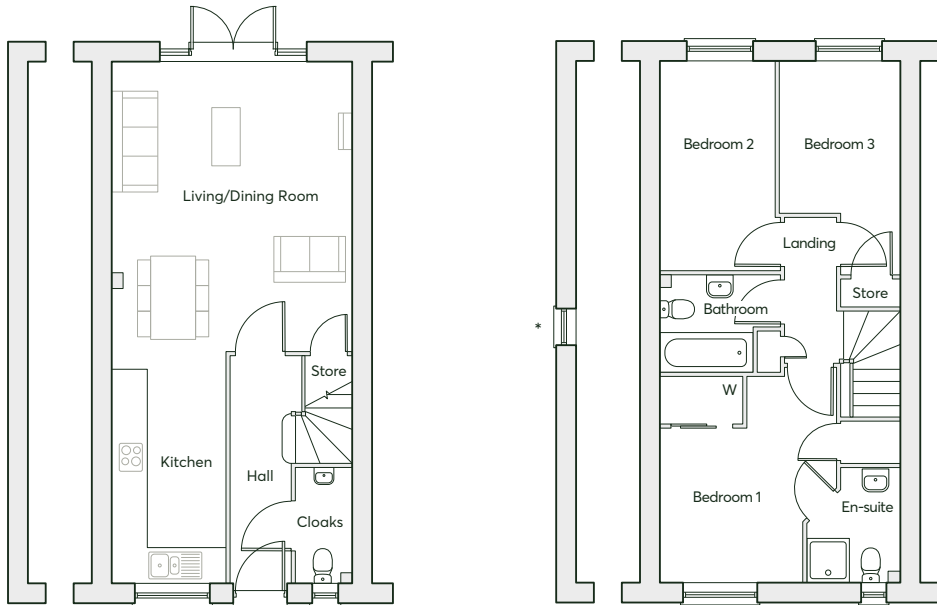
3 bedroom home
2 parking spaces

902 sqft

The Jasper - Pure offers a versatile and stylish living space. The open-plan kitchen, dining and living area is perfect for socialising. Floor-to-ceiling windows welcome natural light into the home, providing a warm, calming environment.

WITH FEATURES WE LOVE

- Energy efficient Nest Learning Thermostat
- Smart Ring 2 Video Doorbell
- Ultimate open-plan living
- Master bedroom with en-suite and built-in wardrobe



*Plot specific windows

GROUND FLOOR

Kitchen	4.24m × 2.09m	13'11" × 6'10"
Living/Dining Room	5.28m × 4.40m	17'4" × 14'5"

FIRST FLOOR

Bedroom 1	3.77m(max) × 2.61m(min)	12'4"(max) × 8'6"(min)
Bedroom 2	3.81m × 2.11m	12'6" × 6'11"
Bedroom 3	3.88m(max) × 2.20m(max)	12'9"(max) × 7'3"(max)
Bathroom	2.24m × 1.78m	7'4" × 5'10"
En-suite	1.74m × 2.20m	5'8" × 7'3"



THE LEO - PURE

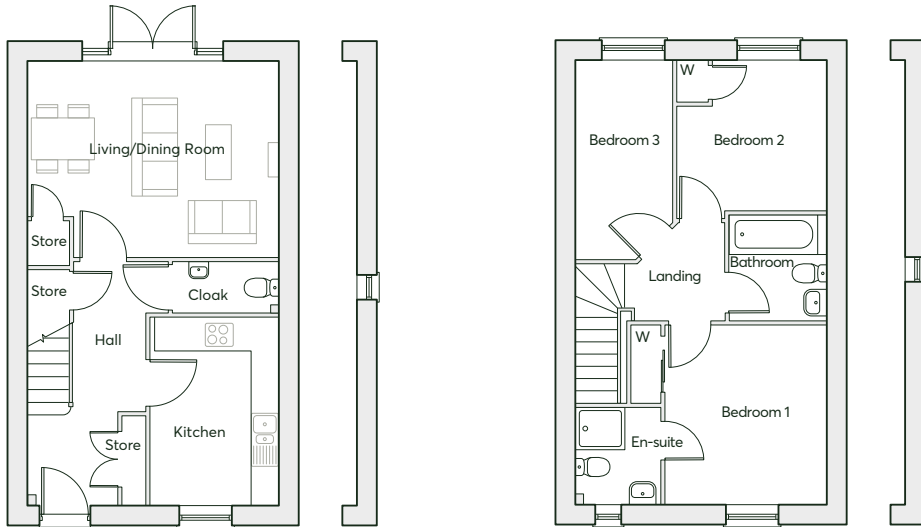
3 bedroom home
2 parking spaces

900 sqft

The Leo - Pure is a stylish and versatile home, designed with modern living in mind. For those that love to socialise, the functional living room opens out to the rear garden – perfect for those long summer evenings.

WITH FEATURES WE LOVE

- Energy efficient Nest Learning Thermostat
- Smart Ring 2 Video Doorbell
- Open-plan living and dining area
- Separate kitchen
- French doors leading to the rear garden
- Master bedroom with en-suite and built-in wardrobe



GROUND FLOOR

Kitchen	2.49m × 3.58m	8'2" × 11'9"
Living/Dining Room	4.91m × 3.76m	16'1" × 12'4"

FIRST FLOOR

Bedroom 1	3.49m × 3.12m	11'5" × 10'3"
Bedroom 2	2.77m × 2.67m(max)	9'1" × 8'9"(max)
Bedroom 3	3.76m × 2.15m	12'4" × 7'1"
Bathroom	2.07m × 1.70m	6'10" × 5'7"
En-suite	1.70m × 1.87m	5'7" × 6'1"



THE GENNINGS - PURE v1

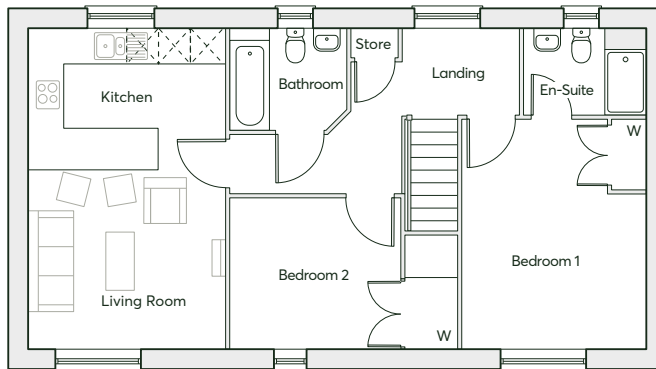
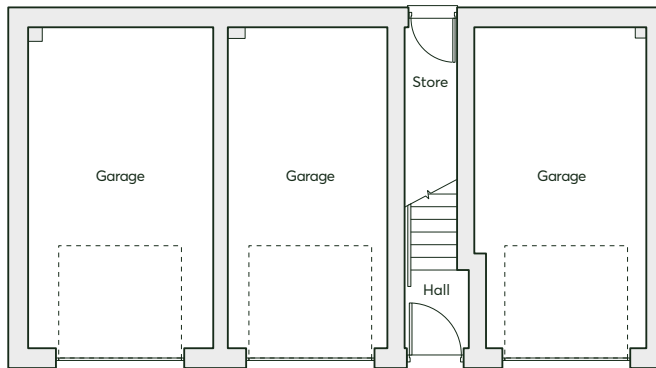
2 bedroom home
Elevated living
Parking space

824 sqft

The Gennings - Pure v1 embodies luxurious single-storey living. The open-plan kitchen and living room provide a sociable space to unwind. Floor-to-ceiling windows flood the home with light, giving it a spacious and airy feel.

WITH FEATURES WE LOVE

- Large master bedroom
- Floor-to-ceiling windows
- Energy efficient Nest Learning Thermostat
- Smart Ring 2 Video Doorbell
- Built-in wardrobe and en-suite in the master bedroom
- Breakfast bar in the kitchen



824 sqft

FIRST FLOOR

Living Room/Kitchen	6.04m × 3.70m	19'10" × 12'2"
Bedroom 1	4.34m × 3.46m	14'3" × 11'4"
Bedroom 2	2.86m × 3.22m	9'5" × 10'6"
Bathroom	2.19m × 1.90m	7'2" × 6'3"
En-suite	2.30m × 1.61m	7'6" × 5'3"



THE GENNINGS - PURE v2

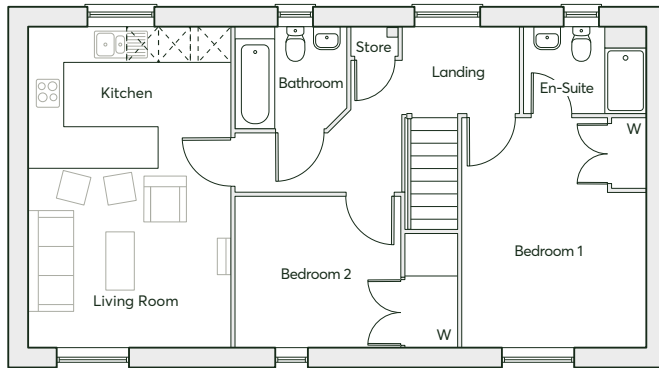
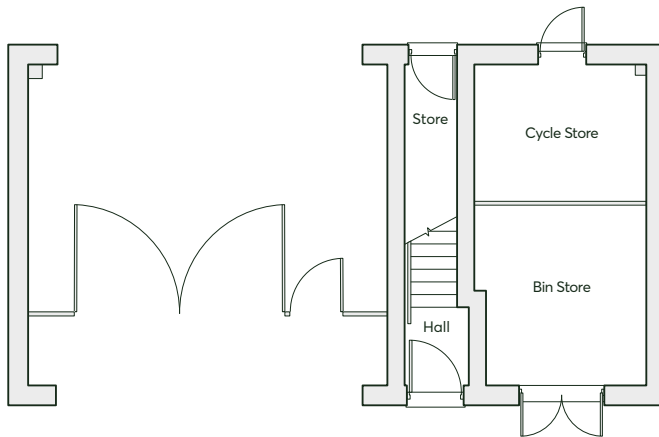
2 bedroom home
Elevated living
Parking space

824 sqft

The Gennings - Pure v2 embodies luxurious single-storey living. The open-plan kitchen and living room provide a sociable space to unwind. Floor-to-ceiling windows flood the home with light, giving it a spacious and airy feel.

WITH FEATURES WE LOVE

- Large master bedroom
- Floor-to-ceiling windows
- Energy efficient Nest Learning Thermostat
- Smart Ring 2 Video Doorbell
- Built-in wardrobe and en-suite in the master bedroom
- Breakfast bar in the kitchen



824 sqft

FIRST FLOOR

Living Room/Kitchen	6.04m × 3.70m	19'10" × 12'2"
Bedroom 1	4.34m × 3.46m	14'3" × 11'4"
Bedroom 2	2.86m × 3.22m	9'5" × 10'6"
Bathroom	2.19m × 1.90m	7'2" × 6'3"
En-suite	2.30m × 1.61m	7'6" × 5'3"



THE KEMBLE - PURE v1

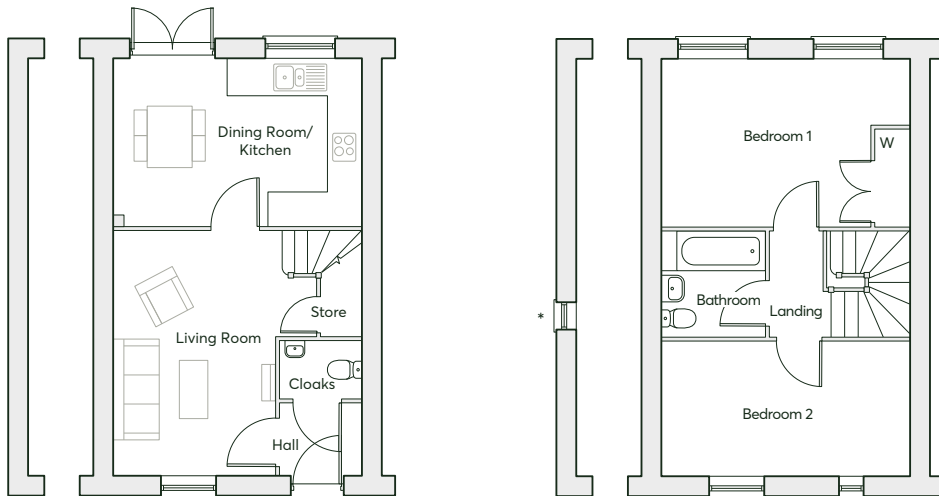
2 bedroom home
2 parking spaces

749 sqft

The Kemble - Pure is the perfect home for those looking for both relaxation and a space to entertain family and friends. Two bedrooms bring ample opportunities for personalisation to the upper level, with floor-to-ceiling windows helping emphasise the space within.

WITH FEATURES WE LOVE

- Energy efficient Nest Learning Thermostat
- Smart Ring 2 Video Doorbell
- Floor-to-ceiling windows
- Family bathroom



*Plot specific windows

GROUND FLOOR

Kitchen/Dining Room	4.57m × 3.03m	15'0" × 9'11"
Living Room	4.49m × 2.97m	14'9" × 9'9"

FIRST FLOOR

Bedroom 1	4.57m × 3.03m	15'0" × 9'11"
Bedroom 2	4.57m × 2.47m	15'0" × 8'1"
Bathroom	1.94m × 1.91m	6'4" × 6'3"



THE KEMBLE - PURE v2

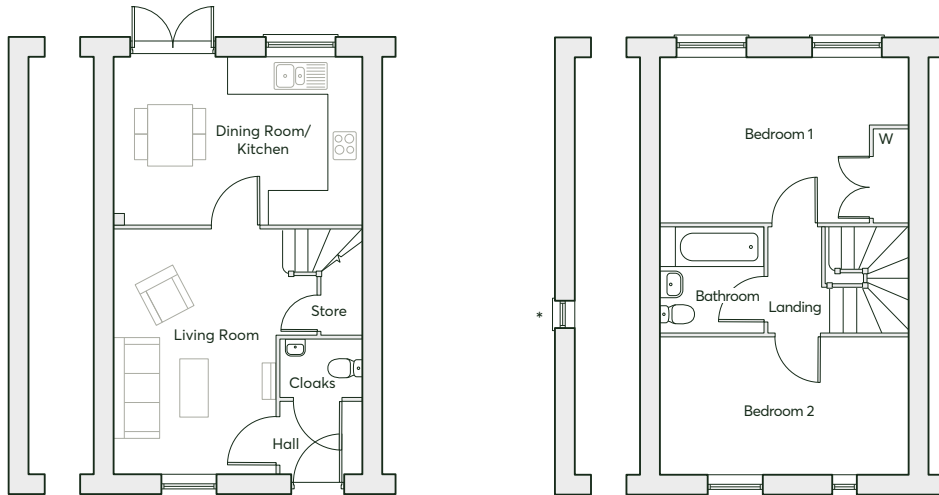
2 bedroom home
2 parking spaces

749 sqft

The Kemble - Pure is the perfect home for those looking for both relaxation and a space to entertain family and friends. Two bedrooms bring ample opportunities for personalisation to the upper level, with floor-to-ceiling windows helping emphasise the space within.

WITH FEATURES WE LOVE

- Energy efficient Nest Learning Thermostat
- Built-in wardrobe and en-suite in the master bedroom
- Floor-to-ceiling windows
- Family bathroom



*Plot specific windows

GROUND FLOOR	Kitchen/Dining Room	4.57m × 3.03m	15'0" × 9'11"
	Living Room	4.49m × 2.97m	14'9" × 9'9"
FIRST FLOOR	Bedroom 1	4.57m × 3.03m	15'0" × 9'11"
	Bedroom 2	4.57m × 2.47m	15'0" × 8'1"
	Bathroom	1.94m × 1.91m	6'4" × 6'3"

Please speak to a member of the Sales Team if you require this brochure in an alternative format.

St. Modwen Homes, Two Devon Way, Longbridge, Birmingham, B31 2TS

T: 0121 647 1000 **E:** sales@stmodwenhomes.co.uk

stmodwenhomes.co.uk

