

Discover the difference



BANBURY PLACE



Mercury Drive, Wolverhampton, WV10 6DG

YOUR COMMUNITY



St. Modwen Homes is the housebuilding division of St. Modwen, expert developer and regeneration specialist.

Our core business purpose is: Changing places. Creating better futures. With over 30 years' experience, we know all about transforming the landscape and creating new communities.

We lead the way in delivering quality places to live and work that enhance spaces and create opportunities for growth and shared returns. Working together with our partners, our aim is to deliver a lasting legacy and contribute to better futures for all.

St. Modwen doesn't just build homes, business parks and warehouses, we build schools, universities, retail and leisure facilities. We turn spaces into places that allow generations of people, communities and businesses to thrive.

Being able to draw on the Group's extensive knowledge and expertise in such a wide range of areas means that St. Modwen Homes can build not just superb new homes but create great and lasting new communities too.





YOUR FUTURE

Whether you are looking for your first home or are moving up the property ladder, St. Modwen Homes build an exciting range of properties in a wide range of locations throughout the country.

We offer an extensive selection of house buying initiatives and incentives to help you buy your dream home and our dedicated sales team are here to help you at every step along the way.

St. Modwen Homes are committed to providing a first class service and our sales consultants are always on hand to answer your questions, whether that's regarding details about your chosen home, obtaining a mortgage or arranging a completion date. Our customer service continues once you've moved into your new home too.

We take our environmental responsibility very seriously and employ environmentally friendly building techniques and sustainable materials wherever we can. Our sites are developed with respect and care for the local community, for our workers and for the existing landscape.

St. Modwen Homes have won many awards, both from the industry and from our customers. These awards mean a lot to us, but building homes people love and being a good neighbour mean even more.





DEVELOPMENT LAYOUT

- | | | |
|--|---|---|
| The Barlow (1379)
4 bedroom home | The Chichester (1208/ 1192)
4 bedroom home | The Gennings (814)
2 bedroom FOG unit |
| The Hexham (1355)
4 bedroom home | The Hannington (1173)
4 bedroom home | The Kemble (705)
2 bedroom home |
| The Clermont (1336)
4 bedroom home | The Kea (936/ 922)
3 bedroom home | The Laszlo (630GF/758FF)
2 bedroom maisonette |
| The Paris (1318/ 1371)
4 bedroom home | The Houghton (920/ 909)
3 bedroom home | Affordable housing & rent to share
(1, 2, 3 & 4 bedroom homes) |
| The Hiero (1272/ 1252)
4 bedroom home | The Mirin (838/ 823)
3 bedroom home | BC = Bin collection point |
| The Becket (1210)
4 bedroom home | The Lawrence (790)
3 bedroom home | V = Visitor parking |
| | | ▶ = Integral garage |
| | | ▷ = Drive through |
| | | ⊙ = Sustainable homes |



Important Notice
The development layout is intended for illustrative purposes only and may change, for example, in response to market demand or ground conditions. It should be treated as general guidance and cannot be relied upon as accurately describing any one of the specified matters prescribed by any order made under Property Misdescriptions act. Landscaping is indicative. Please refer to the Landscape Plan available from our Sales Consultant or Selling Agent. SMP 53769/September 2023



THE BARLOW

- Open plan dining/family/living room and kitchen with integrated appliances and French doors to the garden
- Separate study
- Downstairs cloakroom
- Laundry room off the kitchen
- Master bedroom with en-suite and walk-in wardrobe
- Fully fitted family bathroom
- Full gas fired central heating
- Double glazing and high-performance insulation throughout
- 10 year New Home warranty

BANBURY PLACE

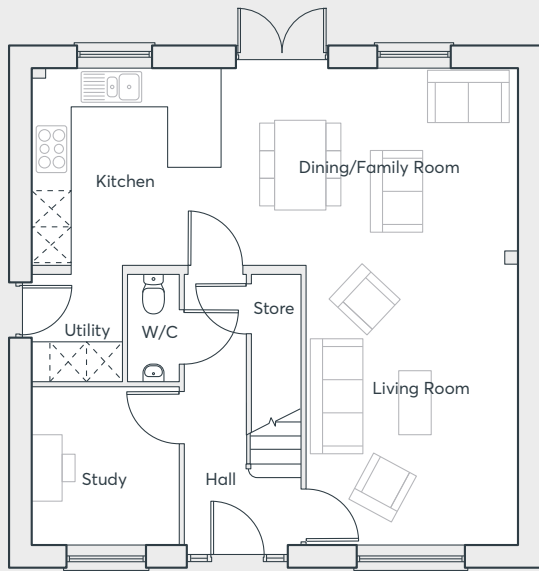
WOLVERHAMPTON

**FOUR
BEDROOM
HOME**

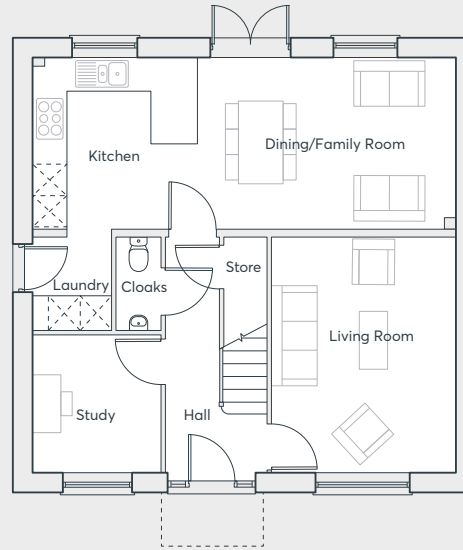
1,379 sq. ft.

 **ST. MODWEN
HOMES**

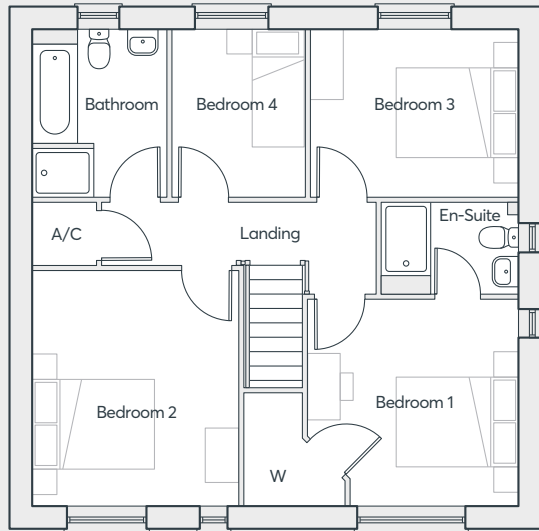
GROUND FLOOR



ALTERNATIVE OPTION



FIRST FLOOR



THE BARLOW

Living Room	3.51m x 4.66m	11'6" x 15'3"
Kitchen/Dining	8.06m x 3.28m	26'5" x 10'9"
Study	2.45m x 2.65m	8'0" x 8'8"
Utility	1.50m x 1.77m	5'10" x 15'0"
W/C	0.86m x 1.77m	2'8" x 5'8"
Bedroom 1	3.51m x 3.45m	11'4" x 11'6"
En-suite	2.27m x 1.52m	7'6" x 5'0"
Bedroom 2	3.92m x 3.42m	12'10" x 11'3"
Bedroom 3	3.45m x 2.78m	11'4" x 9'1"
Bedroom 4	2.80m x 2.21m	7'3" x 9'2"
Bathroom	2.80m x 2.23m	9'2" x 7'4"

Computer generated images are indicative only. External finishes, materials, layouts, window positions and styles may vary. Room sizes are taken to the widest point in each room wall to wall and a tolerance of +/- 5% is allowed. The floor plans are for guidance only and may be subject to change and properties may be "handed" or mirror images of the plans shown. Please check with our Sales Consultant or Selling Agent. SMP 53769/August 2020

BANBURY PLACE

WOLVERHAMPTON

**FOUR
BEDROOM
HOME**

1,379 sq. ft.





THE PARIS V2

- Three storey home
- Kitchen/dining room with French doors to the garden
- Spacious living room
- Two bedrooms, a study and a family bathroom on the first floor. Master bedroom with en suite & fitted wardrobes
- Two further bedrooms and a bathroom on the second floor
- Full gas fired central heating
- Double glazing and high-performance insulation throughout
- 10 year New Home warranty

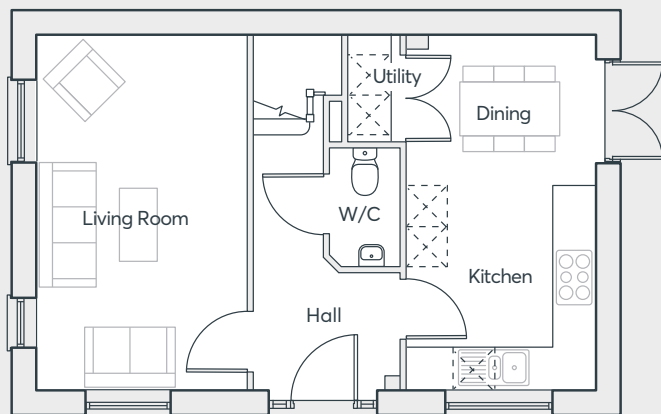
BANBURY PLACE

WOLVERHAMPTON

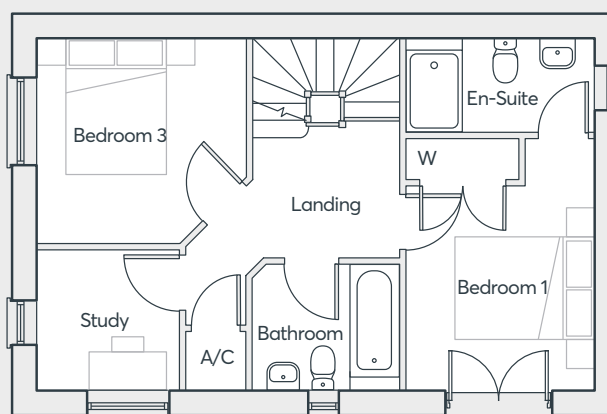
**FOUR
BEDROOM
HOME**

1,318 sq. ft.

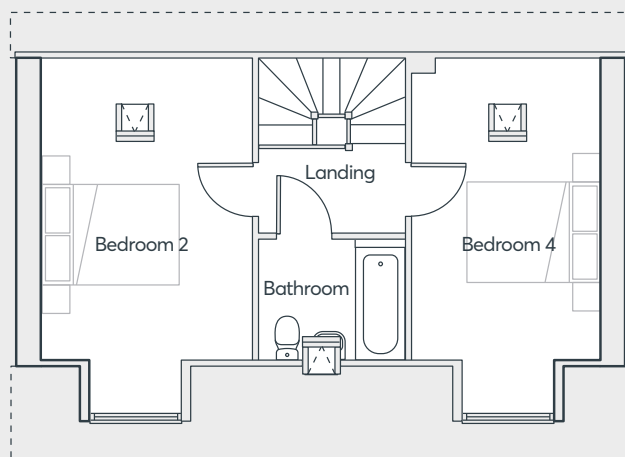
 **ST. MODWEN
HOMES**



GROUND FLOOR



FIRST FLOOR



SECOND FLOOR

THE PARIS V2

Living Room	5.25m x 3.12m	17'3" x 10'3"
Kitchen/Dining	5.25m x 2.81m	17'3" x 9'3"
W/C	1.75m x 1.04m	5'9" x 3'5"
Utility	0.79m x 1.29m	2'7" x 4'3"
Bedroom 1	2.79m x 3.74m	9'2" x 12'3"
En-suite	2.79m x 1.42m	9'2" x 4'8"
Study	2.14m x 2.11m	7'0" x 6'11"
Bedroom 3	3.12m x 3.05m	10'3" x 10'0"
Bedroom 2	3.12m x 5.25m	10'3" x 17'3"
Bedroom 4	2.81m x 5.25m	9'3" x 17'3"
Bathroom FF	2.18m x 1.90m	7'2" x 6'3"
Bathroom SF	2.18m x 1.80m	7'2" x 5'11"

Computer generated images are indicative only. External finishes, materials, layouts, window positions and styles may vary. Room sizes are taken to the widest point in each room wall to wall and a tolerance of +/- 5% is allowed. The floor plans are for guidance only and may be subject to change and properties may be "handed" or mirror images of the plans shown. Please check with our Sales Consultant or Selling Agent. SMP 53769/August 2020

BANBURY PLACE

WOLVERHAMPTON

**FOUR
BEDROOM
HOME**

1,318 sq. ft.

 **ST. MODWEN
HOMES**



THE PARIS V2

Sustainable home

- Flexible living across three floors
- Kitchen/dining room with French doors to the rear garden
- Separate living room
- Main bedroom with Juliet balcony, en-suite and fitted wardrobe to first floor
- Three further double bedrooms spread across the first and second floors
- First floor study
- Bathroom to first and second floors
- Full gas fired central heating
- Double glazing and high-performance insulation throughout
- 10 year New Home warranty
- PV Solar Panels to roof*

*Please refer to specialist designs for exact locations.

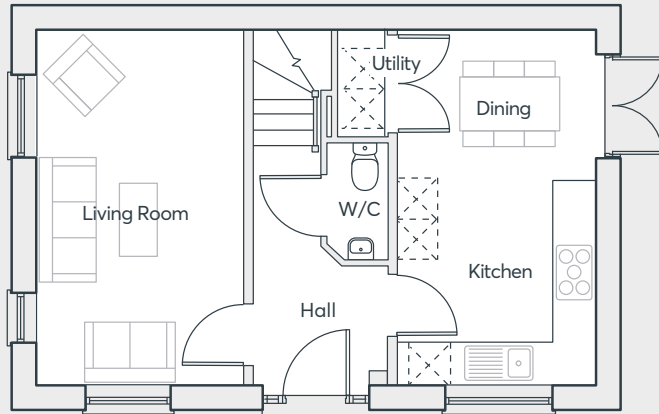
BANBURY PLACE

WOLVERHAMPTON

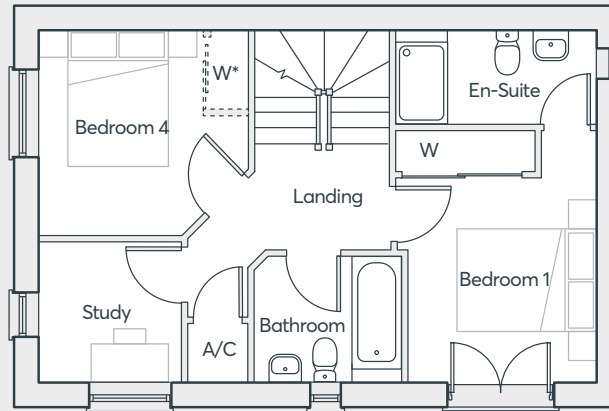
**FOUR
BEDROOM
HOME**

1,371 sq. ft.

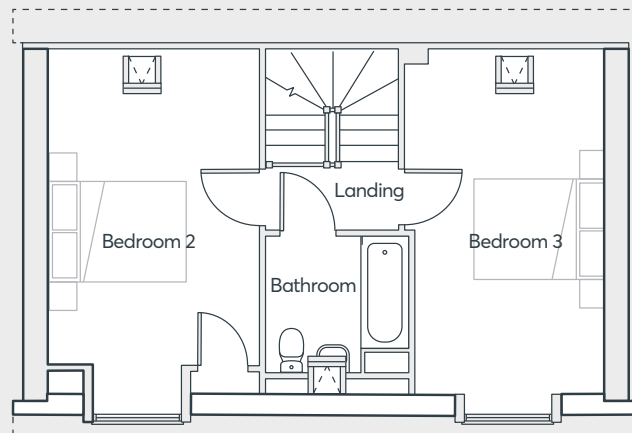
 **ST. MODWEN
HOMES**



GROUND FLOOR



FIRST FLOOR



SECOND FLOOR

*Optional wardrobe at an additional cost
Layout representative of plots 109, 128, 149

THE PARIS V2

Living Room	5.20m x 3.06m	17'1" x 10'0"
Kitchen/Dining	5.32m x 2.89m	17'5" x 9'6"
W/C	1.75m x 0.9m	5'9" x 3'0"
Utility	1.54m x 0.83m	5'0" x 2'9"
Bedroom 1	3.72m x 2.80m	12'2" x 9'2"
En-suite	1.39m x 2.96m	4'7" x 9'8"
Study	2.08m x 2.14m	6'10" x 7'0"
Bedroom 3	5.03m x 2.80m	16'6" x 9'2"
Bedroom 2	5.03m x 3.11m	16'6" x 10'2"
Bedroom 4	3.03m x 3.11m	9'11" x 10'2"
Bathroom FF	1.88m x 2.16m	6'2" x 7'1"
Bathroom SF	2.05m x 2.15m	6'9" x 7'1"

Computer generated images are indicative only. External finishes, materials, layouts, window positions and styles may vary. Room sizes are taken to the widest point in each room wall to wall and a tolerance of +/- 5% is allowed. The floor plans are for guidance only and may be subject to change and properties may be "handed" or mirror images of the plans shown. Please check with our Sales Consultant or Selling Agent. SMP 53769/September 2023

BANBURY PLACE

WOLVERHAMPTON

**FOUR
BEDROOM
HOME**

1,371 sq. ft.





THE HIERO

Sustainable home

- 3 storey home
- Living room with under stairs storage
- Kitchen/dining room with attached utility and cloakroom
- French doors leading to the garden from the dining room with a separate door from the utility
- Three bedrooms and a family bathroom on the first floor
- Second floor dedicated to the main bedroom with Juliet balcony, en suite shower room and built-in wardrobe
- Full gas fired central heating
- Double glazing and high-performance insulation throughout
- 10 year New Home warranty
- PV Solar Panels to roof*

*Please refer to specialist designs for exact locations.

BANBURY PLACE

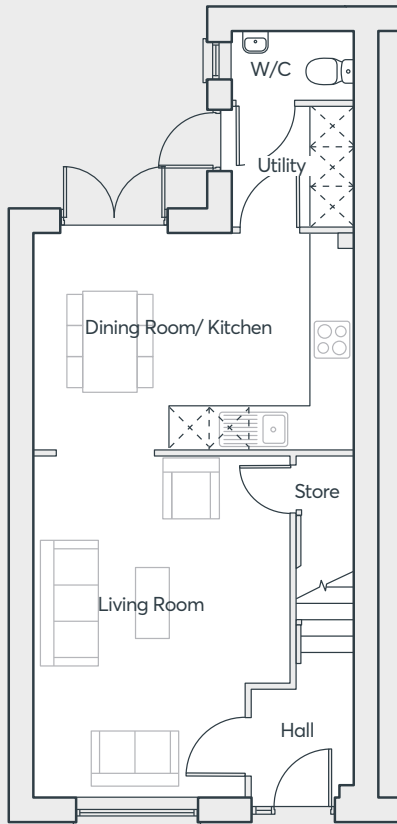
WOLVERHAMPTON

**FOUR
BEDROOM
HOME**

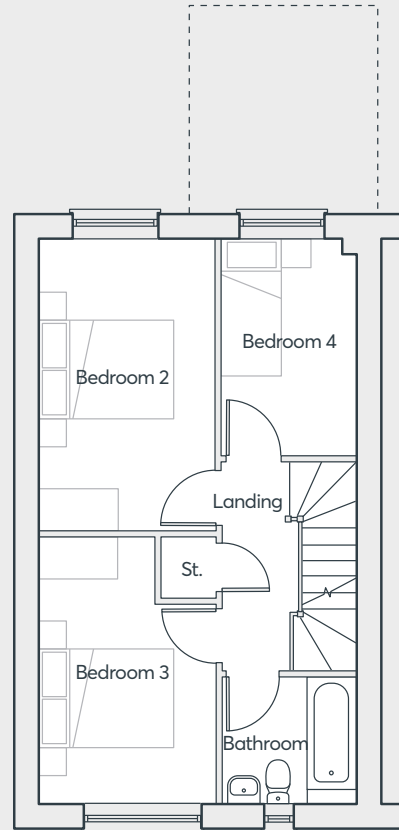
1,252 sq. ft.

 **ST. MODWEN
HOMES**

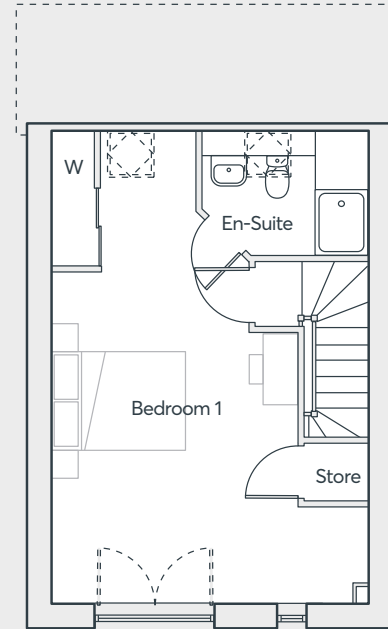
THE HIERO



GROUND FLOOR



FIRST FLOOR



SECOND FLOOR

Living Room	5.07m x 3.79m	16'7" x 12'5"
Kitchen/Dining	3.19m x 4.74m	10'6" x 15'7"
Utility	1.81m x 1.83m	5'11" x 6'0"
W/C	1.02m x 1.83m	3'4" x 6'0"
Bedroom 2	4.29m x 2.62m	14'1" x 8'7"
Bedroom 3	3.94m x 2.62m	12'11" x 8'7"
Bedroom 4	3.19m x 2.02m	10'6" x 6'8"
Bathroom	1.88m x 2.02m	6'2" x 6'8"
Bedroom 1	7.01m x 3.66m	23'0" x 12'0"
En-suite	1.85m x 2.50m	6'1" x 8'3"

Computer generated images are indicative only. External finishes, materials, layouts, window positions and styles may vary. Room sizes are taken to the widest point in each room wall to wall and a tolerance of +/- 5% is allowed. The floor plans are for guidance only and may be subject to change and properties may be "handed" or mirror images of the plans shown. Please check with our Sales Consultant or Selling Agent. SMP 53769/September 2023

Layout representative of plots 107, 108, 147, 148, 150, 151

BANBURY PLACE

WOLVERHAMPTON

FOUR BEDROOM HOME

1,252 sq. ft.



THE CHICHESTER

- Open plan kitchen, dining and family room with bi-folding doors onto garden
- Separate study to ground floor
- Downstairs cloakroom
- Downstairs store room
- Master bedroom with en-suite and built-in wardrobe
- Fully fitted family bathroom
- Full gas fired central heating
- Double glazing and high-performance insulation throughout
- 10 year New Home warranty

BANBURY PLACE

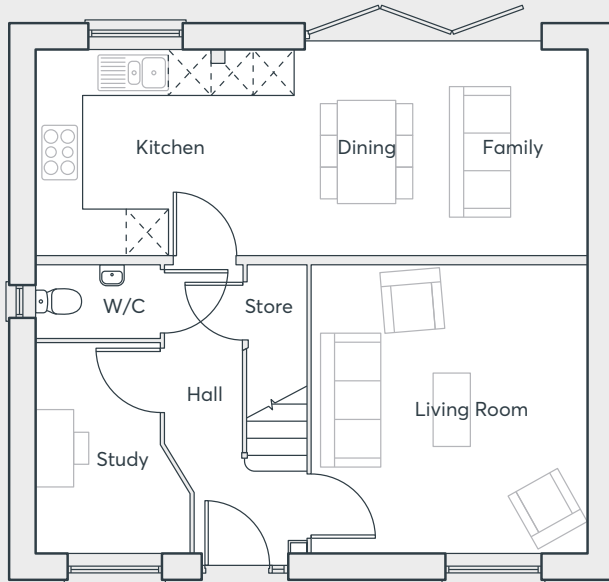
WOLVERHAMPTON

**FOUR
BEDROOM
HOME**

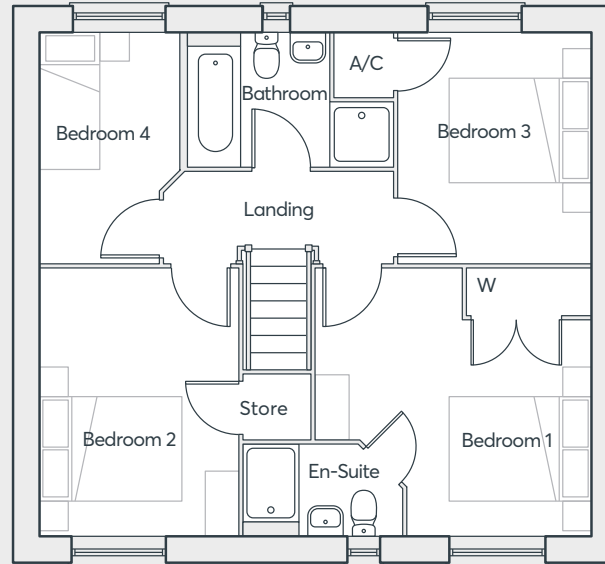
1,208 sq. ft.

 **ST. MODWEN
HOMES**

THE CHICHESTER



GROUND FLOOR



FIRST FLOOR

Living Room	4.10m x 3.92m	13'5" x 12'10"
Kitchen	7.84m x 2.91m	25'8" x 9'7"
Study	3.00m x 2.17m	9'10" x 7'1"
W/C	1.74m x 1.01m	5'9" x 3'4"
Bedroom 1	3.92m x 3.80m	12'10" x 12'6"
En-Suite	2.26m x 1.31m	7'5" x 4'4"
Bedroom 2	3.80m x 2.79m	12'6" x 9'2"
Bedroom 3	3.27m x 2.75m	10'9" x 9'0"
Bedroom 4	3.27m x 1.98m	10'9" x 6'6"
Bathroom	2.91m x 1.90m	9'6" x 6'3"

Computer generated images are indicative only. External finishes, materials, layouts, window positions and styles may vary. Room sizes are taken to the widest point in each room wall to wall and a tolerance of +/- 5% is allowed. The floor plans are for guidance only and may be subject to change and properties may be "handed" or mirror images of the plans shown. Please check with our Sales Consultant or Selling Agent. SMP 53769/August 2020

BANBURY PLACE

WOLVERHAMPTON

**FOUR
BEDROOM
HOME**

1,208 sq. ft.

 **ST. MODWEN
HOMES**

THE CHICHESTER

Sustainable home

- Open plan kitchen, dining and family room with French doors to the garden
- Separate living room
- Study to ground floor
- Main bedroom with en-suite and built-in wardrobe
- Main bathroom with walk-in shower and bath
- Two further double bedrooms, and a single bedroom that could alternatively be used as a nursery
- Full gas fired central heating
- Double glazing and high-performance insulation throughout
- 10 year New Home warranty
- PV Solar Panels to roof*

*Please refer to specialist designs for exact locations.

BANBURY PLACE

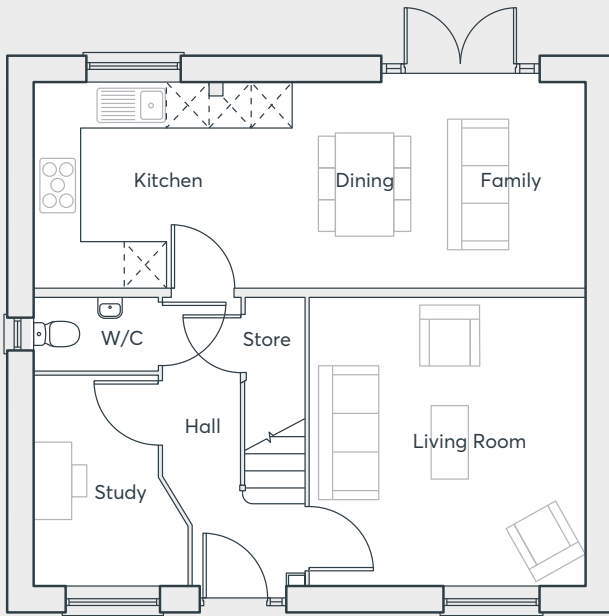
WOLVERHAMPTON

**FOUR
BEDROOM
HOME**

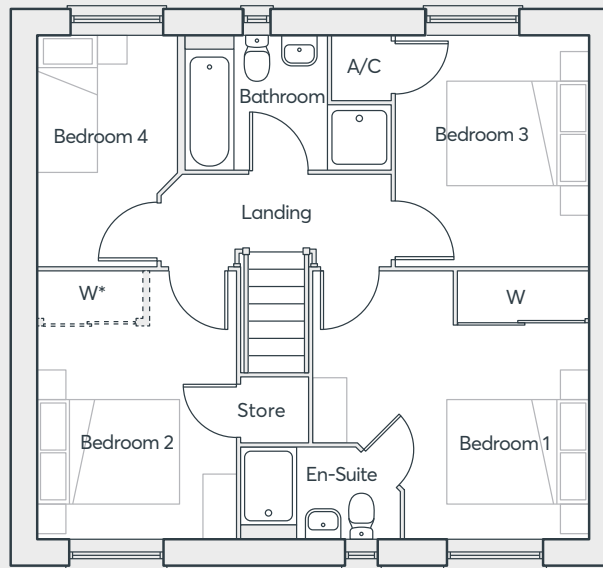
1,192 sq. ft.

 **ST. MODWEN
HOMES**

THE CHICHESTER



GROUND FLOOR



FIRST FLOOR

Living Room	3.89m x 4.07m	13'4" x 12'9"
Kitchen/Dining/ Family	2.89m x 7.79m	9'6" x 25'7"
Study	2.90m x 2.14m	9'6" x 7'0"
W/C	1.09m x 1.72m	3'7" x 5'8"
Bedroom 1	3.78m x 3.89m	12'5" x 12'9"
En-Suite	1.31m x 2.26m	4'4" x 7'5"
Bedroom 2	3.78m x 2.77m	12'5" x 9'1"
Bedroom 3	3.24m x 2.72m	10'8" x 8'11"
Bedroom 4	3.24m x 1.95m	10'8" x 6'5"
Bathroom	1.90m x 2.91m	6'3" x 9'6"

Computer generated images are indicative only. External finishes, materials, layouts, window positions and styles may vary. Room sizes are taken to the widest point in each room wall to wall and a tolerance of +/- 5% is allowed. The floor plans are for guidance only and may be subject to change and properties may be "handed" or mirror images of the plans shown. Please check with our Sales Consultant or Selling Agent. SMP 53769/September 2023

*Optional wardrobe at an additional cost
Layout representative of plot 110

**FOUR
BEDROOM
HOME**

1,192 sq. ft.

BANBURY PLACE

WOLVERHAMPTON

 **ST. MODWEN
HOMES**



THE KEA v2

- Open plan dining/kitchen with integrated appliances and French doors to the garden
- Separate living room
- Downstairs cloakroom
- Master bedroom with en-suite, built-in wardrobe and Juliet balcony
- Fully fitted family bathroom
- Full gas fired central heating
- Double glazing and high-performance insulation throughout
- 10 year New Home warranty

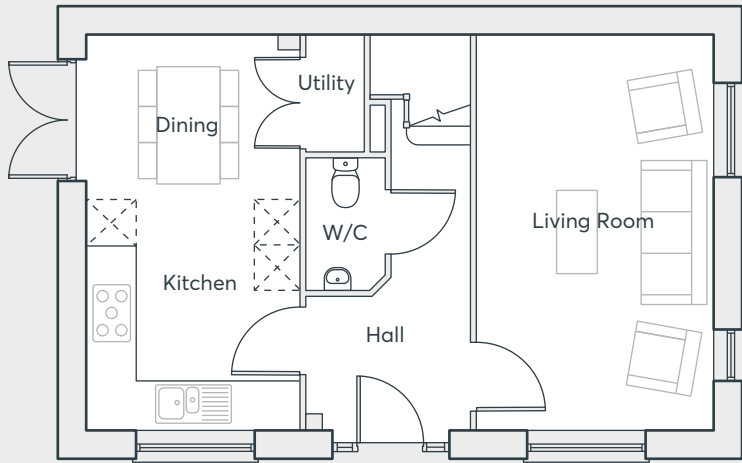
BANBURY PLACE

WOLVERHAMPTON

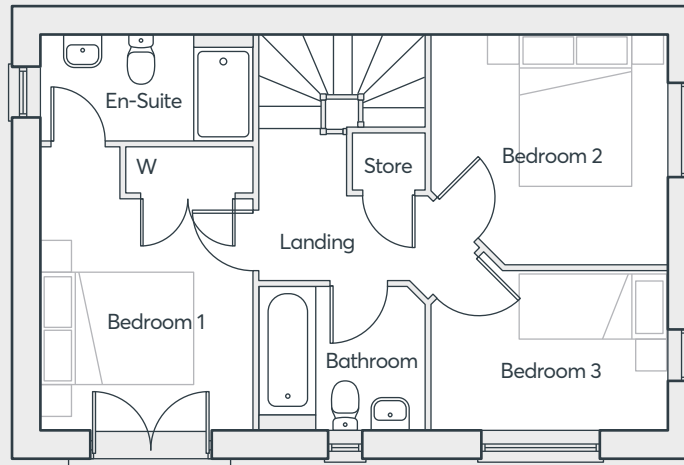
**THREE
BEDROOM
HOME**

936 sq. ft.

 **ST. MODWEN
HOMES**



GROUND FLOOR



FIRST FLOOR

THE KEA V2

Living Room	5.25m x 3.12m	17'3" x 10'3"
Kitchen	5.25m x 2.81m	17'3" x 9'3"
W/C	1.75m x 1.04m	5'9" x 3'5"
Bedroom 1	3.74m x 2.79m	12'3" x 9'2"
En-suite	2.79m x 1.42m	9'2" x 4'8"
Bedroom 2	3.12m x 3.05m	10'3" x 10'0"
Bedroom 3	3.12m x 2.11m	10'3" x 6'11"
Bathroom	2.18m x 1.90m	7'2" x 6'3"

Computer generated images are indicative only. External finishes, materials, layouts, window positions and styles may vary. Room sizes are taken to the widest point in each room wall to wall and a tolerance of +/- 5% is allowed. The floor plans are for guidance only and may be subject to change and properties may be "handed" or mirror images of the plans shown. Please check with our Sales Consultant or Selling Agent. SMP 53769/August 2020

BANBURY PLACE

WOLVERHAMPTON

**THREE
BEDROOM
HOME**

936 sq. ft.





THE KEA

Sustainable home

- Open plan dining/kitchen French doors to the garden
- Separate living room
- Downstairs cloakroom
- Main bedroom with en-suite, built-in wardrobe and Juliet balcony
- Fully fitted family bathroom
- Full gas fired central heating
- Double glazing and high-performance insulation throughout
- 10 year New Home warranty
- PV Solar Panels to roof*

*Please refer to specialist designs for exact locations.

BANBURY PLACE

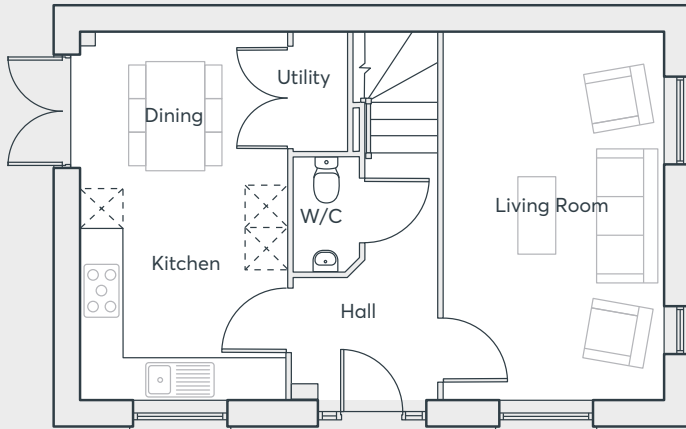
WOLVERHAMPTON

**THREE
BEDROOM
HOME**

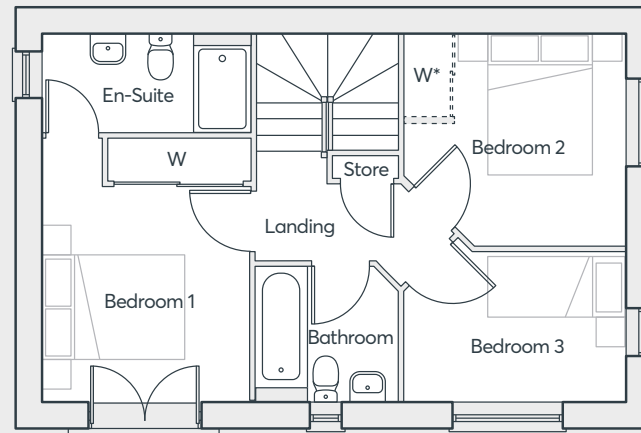
922 sq. ft.

 **ST. MODWEN
HOMES**

THE KEA



GROUND FLOOR



FIRST FLOOR

*Optional wardrobe at an additional cost
Layout representative of plots 111, 123, 146

Living Room	5.20m x 3.04m	17'1" x 10'0"
Kitchen/Dining	5.20m x 2.90m	17'1" x 9'6"
W/C	1.75m x 0.90m	5'2" x 2'11"
Bedroom 1	3.69m x 2.91m	12'1" x 9'7"
En-suite	1.43m x 2.96m	4'8" x 9'8"
Bedroom 2	3.03m x 3.09m	9'11" x 10'2"
Bedroom 3	2.08m x 3.09m	6'10" x 10'2"
Bathroom	1.88m x 2.00m	6'2" x 6'7"

Computer generated images are indicative only. External finishes, materials, layouts, window positions and styles may vary. Room sizes are taken to the widest point in each room wall to wall and a tolerance of +/- 5% is allowed. The floor plans are for guidance only and may be subject to change and properties may be "handed" or mirror images of the plans shown. Please check with our Sales Consultant or Selling Agent. SMP 53769/September 2023

BANBURY PLACE

WOLVERHAMPTON

**THREE
BEDROOM
HOME**

922 sq. ft.

 **ST. MODWEN
HOMES**

THE HOUGHTON

- Front facing living room opening to dining area
- Open plan dining/kitchen with French doors to the garden
- Laundry room and cloakroom off the kitchen
- Under stairs store
- Master bedroom with en-suite and built-in wardrobe
- Fully fitted family bathroom
- Full gas fired central heating
- Double glazing and high-performance insulation throughout
- 10 year New Home warranty

THREE BEDROOM HOME

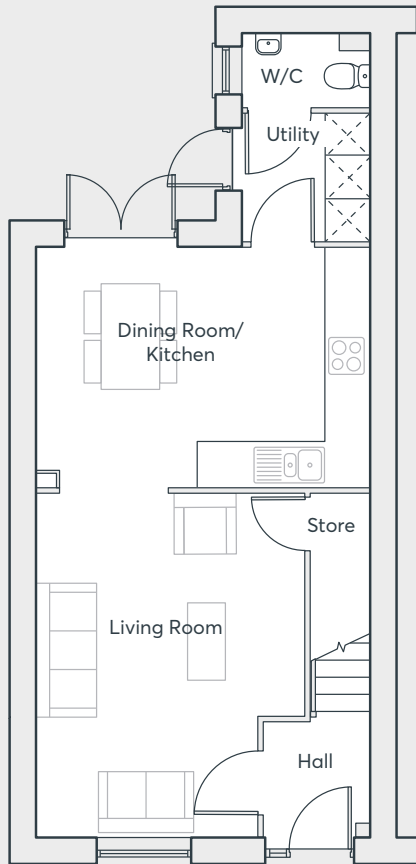
920 sq. ft.

BANBURY PLACE

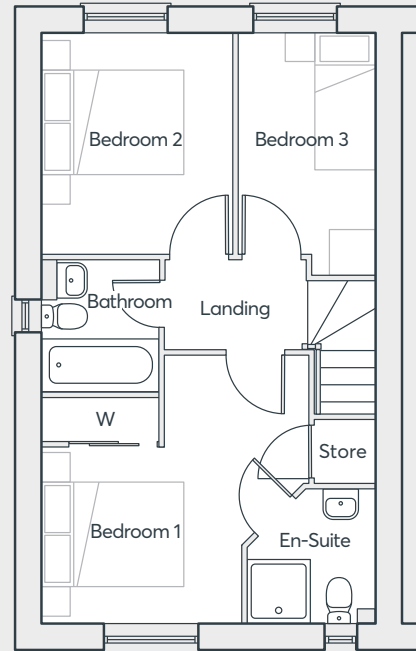
WOLVERHAMPTON

 **ST. MODWEN
HOMES**

THE HOUGHTON



GROUND FLOOR



FIRST FLOOR

Living Room	4.87m x 3.82m	16'0" x 12'6"
Kitchen	4.76m x 3.44m	15'7" x 11'3"
Utility	1.83m x 1.81m	6'0" x 5'11"
W/C	1.83m x 1.05m	6'0" x 3'5"
Bedroom 1	3.82m x 3.80m	12'6" x 12'6"
En-suite	1.92m x 1.81m	6'4" x 5'11"
Bedroom 2	3.13m x 2.74m	10'3" x 9'0"
Bedroom 3	3.44m x 1.93m	11'3" x 6'4"
Bathroom	1.87m x 1.70m	6'2" x 5'7"

Computer generated images are indicative only. External finishes, materials, layouts, window positions and styles may vary. Room sizes are taken to the widest point in each room wall to wall and a tolerance of +/- 5% is allowed. The floor plans are for guidance only and may be subject to change and properties may be "handed" or mirror images of the plans shown. Please check with our Sales Consultant or Selling Agent. SMP 53769/August 2020

BANBURY PLACE

WOLVERHAMPTON

**THREE
BEDROOM
HOME**

920 sq. ft.

 **ST. MODWEN
HOMES**

THE HOUGHTON

Sustainable home

- Front facing living room opening to dining area
- Open plan dining/kitchen with French doors to the garden
- Utility and cloakroom off the kitchen
- Main bedroom with en-suite and built-in wardrobe
- Fully fitted family bathroom
- Full gas fired central heating
- Double glazing and high-performance insulation throughout
- 10 year New Home warranty
- PV Solar Panels to roof*

*Please refer to specialist designs for exact locations.

BANBURY PLACE

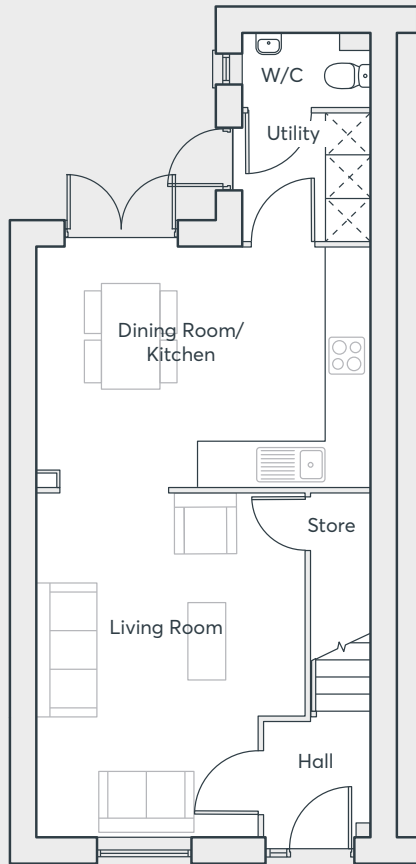
WOLVERHAMPTON

**THREE
BEDROOM
HOME**

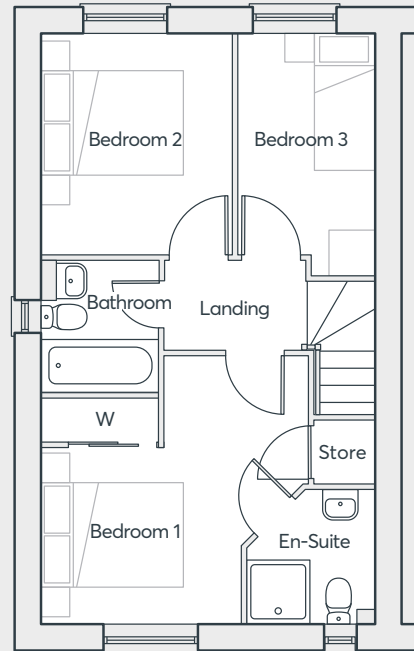
909 sq. ft.

 **ST. MODWEN
HOMES**

THE HOUGHTON



GROUND FLOOR



FIRST FLOOR

Layout representative of plots 124, 125, 126, 127

**THREE
BEDROOM
HOME**

909 sq. ft.

Living Room	4.84m x 3.79m	15'11" x 12'5"
Kitchen/Dining	3.42m x 4.73m	11'2" x 15'6"
Utility	1.81m x 1.81m	5'11" x 5'11"
W/C	1.81m x 1.02m	3'4" x 5'11"
Bedroom 1	3.77m x 3.79m	12'5" x 12'5"
En-suite	1.77m x 1.81m	5'10" x 5'11"
Bedroom 2	3.01m x 2.74m	9'10" x 9'0"
Bedroom 3	3.42m x 1.90m	11'2" x 6'3"
Bathroom	1.97m x 1.69m	6'6" x 5'7"

Computer generated images are indicative only. External finishes, materials, layouts, window positions and styles may vary. Room sizes are taken to the widest point in each room wall to wall and a tolerance of +/- 5% is allowed. The floor plans are for guidance only and may be subject to change and properties may be "handed" or mirror images of the plans shown. Please check with our Sales Consultant or Selling Agent. SMP 53769/September 2023

BANBURY PLACE

WOLVERHAMPTON

 **ST. MODWEN
HOMES**



THE MIRIN v2

- Open plan living/dining room and kitchen with French doors to the garden
- Separate spacious living room
- Downstairs cloakroom
- Master bedroom with en-suite and built-in wardrobe
- Fully fitted family bathroom
- Full gas fired central heating
- Double glazing and high-performance insulation throughout
- 10 year New Home warranty

BANBURY PLACE

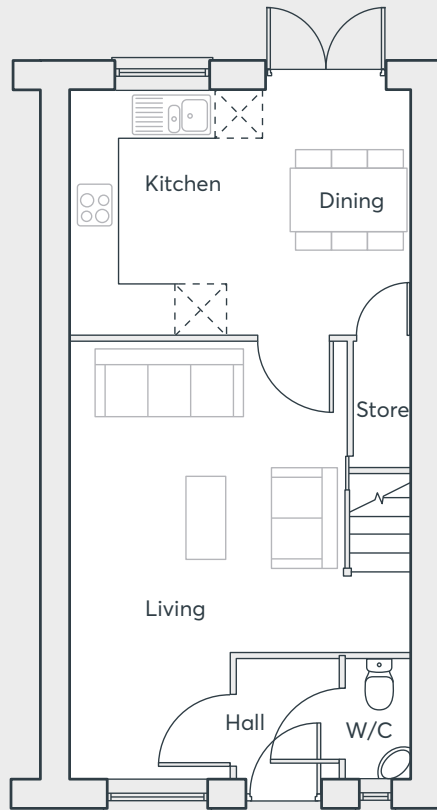
WOLVERHAMPTON

**THREE
BEDROOM
HOME**

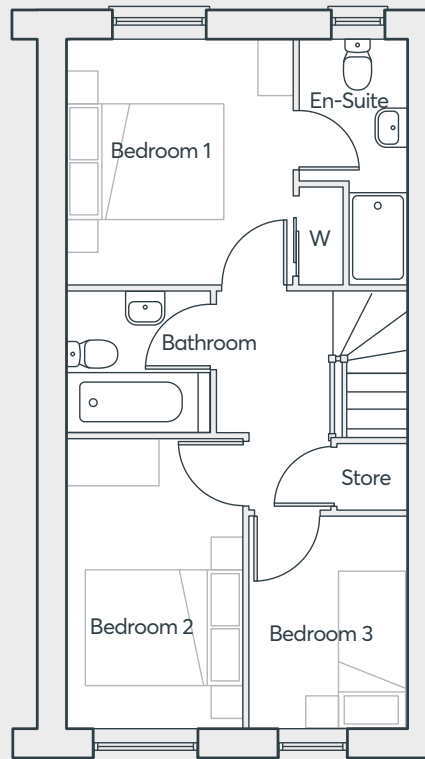
838 sq. ft.

 **ST. MODWEN
HOMES**

THE MIRIN v2



GROUND FLOOR



FIRST FLOOR

Kitchen/Dining	4.83m x 4.40m	15'10" x 14'5"
Living room	4.01m x 2.09m	13'2" x 6'10"
Bedroom 1	3.67m x 2.51m	12'0" x 8'3"
En-suite	3.43m x 1.80m	11'3" x 5'11"
Bedroom 2	3.70m x 3.26m	12'2" x 10'8"
Bedroom 3	2.04m x 2.71m	6'9" x 8'11"
Bathroom	2.20m x 1.70m	7'3" x 5'7"

Computer generated images are indicative only. External finishes, materials, layouts, window positions and styles may vary. Room sizes are taken to the widest point in each room wall to wall and a tolerance of +/- 5% is allowed. The floor plans are for guidance only and may be subject to change and properties may be "handed" or mirror images of the plans shown. Please check with our Sales Consultant or Selling Agent. SMP 53769/August 2020

BANBURY PLACE

WOLVERHAMPTON

**THREE
BEDROOM
HOME**

838 sq. ft.

 **ST. MODWEN
HOMES**



BANBURY PLACE
WOLVERHAMPTON

**THREE
BEDROOM
HOME**

823 sq. ft.

THE MIRIN v2

Sustainable home

- Open plan kitchen/dining room with French doors to the garden
- Separate spacious living room
- Downstairs cloakroom
- Main bedroom with en-suite and built-in wardrobe
- Fully fitted family bathroom
- Full gas fired central heating
- Double glazing and high-performance insulation throughout
- 10 year New Home warranty
- PV Solar Panels to roof*

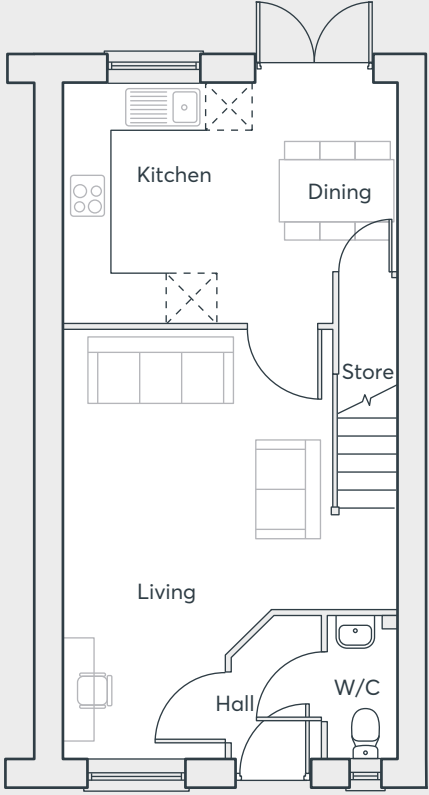
*Please refer to specialist designs for exact locations.

 **ST. MODWEN
HOMES**

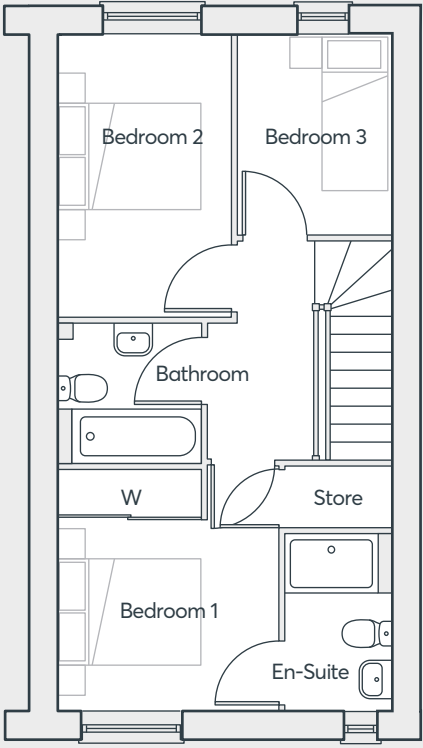
THE MIRIN v2

Kitchen/Dining	3.15m x 4.35m	10'04" x 14'3"
Living room	5.56m x 4.35m	18'3" x 14'3"
Bedroom 1	3.14m x 2.88m	10'4" x 9'5"
En-suite	2.30m x 1.38m	7'7" x 4'6"
Bedroom 2	3.66m x 2.24m	12'0" x 7'4"
Bedroom 3	2.59m x 2.02m	8'6" x 6'8"
Bathroom	1.80m x 1.87m	5'11" x 6'2"

Computer generated images are indicative only. External finishes, materials, layouts, window positions and styles may vary. Room sizes are taken to the widest point in each room wall to wall and a tolerance of +/- 5% is allowed. The floor plans are for guidance only and may be subject to change and properties may be "handed" or mirror images of the plans shown. Please check with our Sales Consultant or Selling Agent. SMP 53769/September 2023



GROUND FLOOR



FIRST FLOOR

Layout representative of plots 140, 141, 142, 143

**THREE
BEDROOM
HOME**
823 sq. ft.

BANBURY PLACE
WOLVERHAMPTON



THE LAWRENCE V1

- Open plan living/dining room with French doors to the rear garden
- Fitted kitchen with built-in oven, hob and extractor hood
- Downstairs cloakroom
- Under stairs store
- Master bedroom with en-suite and built-in wardrobe
- Fully fitted family bathroom
- Full gas fired central heating
- Double glazing and high-performance insulation throughout
- 10 year New Home warranty

BANBURY PLACE

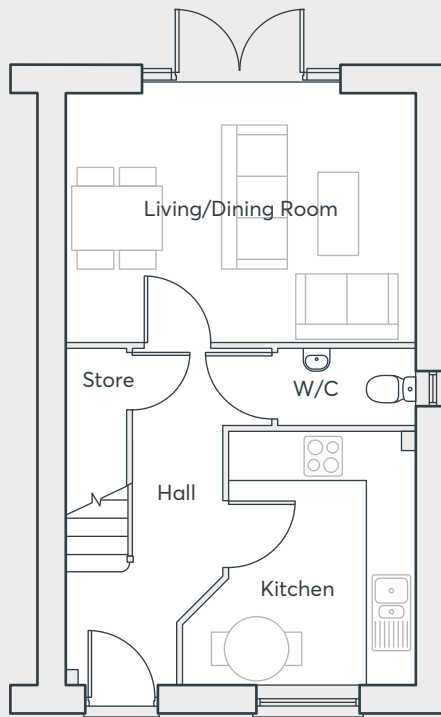
WOLVERHAMPTON

**THREE
BEDROOM
HOME**

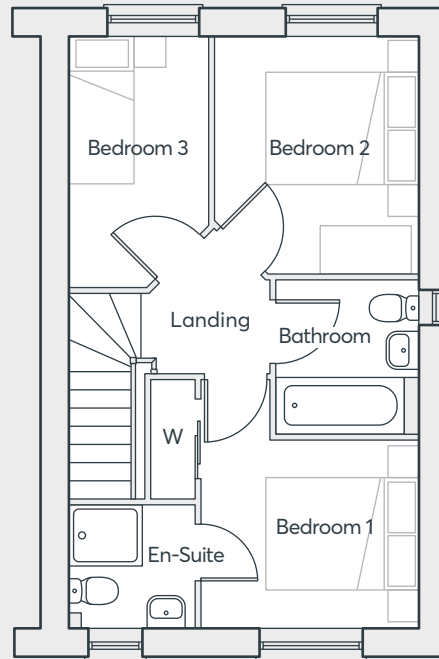
790 sq. ft.

 **ST. MODWEN
HOMES**

THE LAWRENCE V1



GROUND FLOOR



FIRST FLOOR

Living/Dining	4.69m x 3.31m	15'4" x 10'10"
Kitchen	3.35m x 3.09m	11'0" x 10'2"
W/C	1.84m x 1.00m	6'0" x 3'3"
Bedroom 1	3.30m x 2.89m	10'10" x 9'6"
En-suite	1.70m x 1.64m	5'7" x 5'5"
Bedroom 2	3.13m x 2.72m	10'3" x 8'11"
Bedroom 3	3.31m x 1.88m	10'10" x 6'2"
Bathroom	2.03m x 1.90m	6'8" x 6'3"

Computer generated images are indicative only. External finishes, materials, layouts, window positions and styles may vary. Room sizes are taken to the widest point in each room wall to wall and a tolerance of +/- 5% is allowed. The floor plans are for guidance only and may be subject to change and properties may be "handed" or mirror images of the plans shown. Please check with our Sales Consultant or Selling Agent. SMP 53769/August 2020

BANBURY PLACE

WOLVERHAMPTON

**THREE
BEDROOM
HOME**

790 sq. ft.

 **ST. MODWEN
HOMES**

THE LAWRENCE V3

- Living/dining room with French doors to the rear garden
- Fitted kitchen with built-in oven, hob and extractor hood
- Downstairs cloakroom
- Under stairs store
- Master bedroom with en-suite and built-in wardrobe
- Fully fitted family bathroom
- Full gas fired central heating
- Double glazing and high-performance insulation throughout
- 10 year New Home warranty

BANBURY PLACE

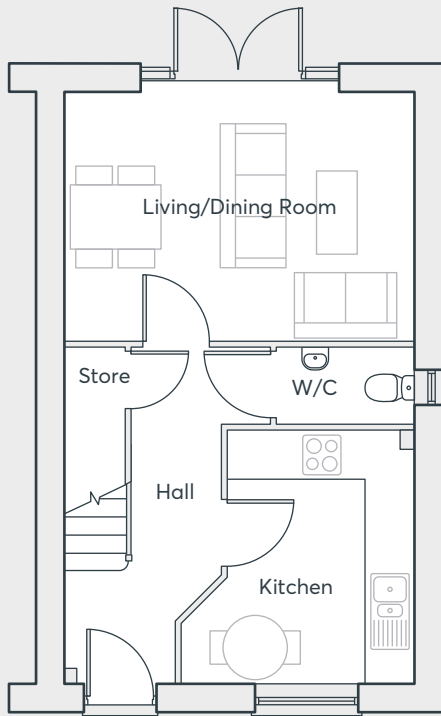
WOLVERHAMPTON

**THREE
BEDROOM
HOME**

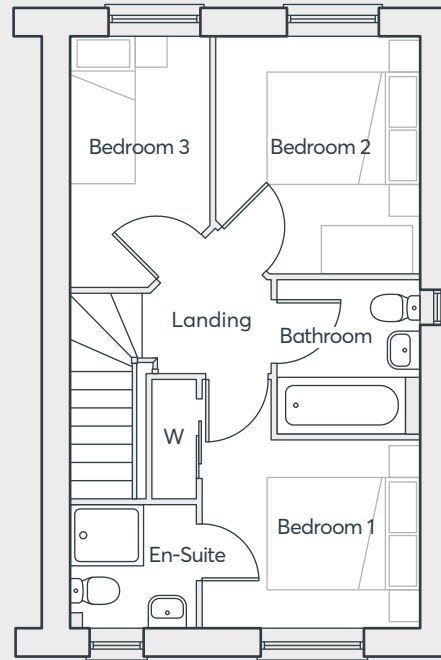
790 sq. ft.

 **ST. MODWEN
HOMES**

THE LAWRENCE V3



GROUND FLOOR



FIRST FLOOR

Living/Dining	4.69m x 3.31m	15'4" x 10'10"
Kitchen	3.35m x 3.09m	11'0" x 10'2"
W/C	1.84m x 1.00m	6'0" x 3'3"
Bedroom 1	3.30m x 2.89m	10'10" x 9'6"
En-suite	1.70m x 1.64m	5'7" x 5'5"
Bedroom 2	3.13m x 2.72m	10'3" x 8'11"
Bedroom 3	3.31m x 1.88m	10'10" x 6'2"
Bathroom	2.03m x 1.90m	6'8" x 6'3"

Computer generated images are indicative only. External finishes, materials, layouts, window positions and styles may vary. Room sizes are taken to the widest point in each room wall to wall and a tolerance of +/- 5% is allowed. The floor plans are for guidance only and may be subject to change and properties may be "handed" or mirror images of the plans shown. Please check with our Sales Consultant or Selling Agent. SMP 53769/August 2020

BANBURY PLACE

WOLVERHAMPTON

**THREE
BEDROOM
HOME**

790 sq. ft.





THE GENNINGS

- Kitchen with built in appliances
- Separate living room
- Family bathroom
- Bedroom one with built-in wardrobe & ensuite
- Store cupboard to first floor
- 10 year warranty cover

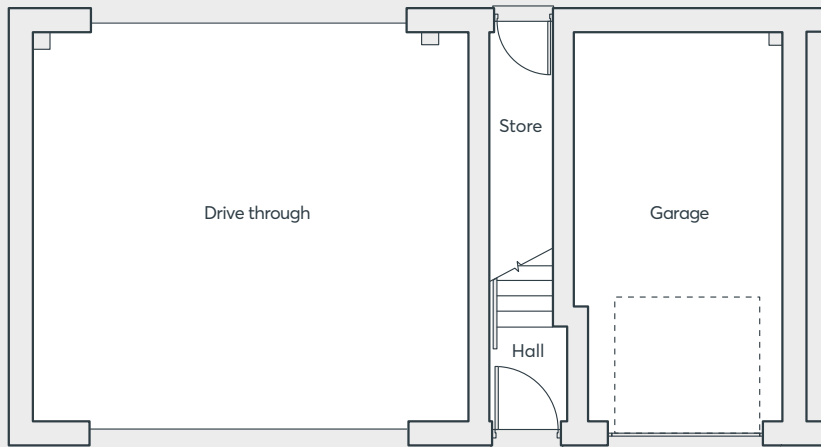
BANBURY PLACE
WOLVERHAMPTON

**TWO
BEDROOM
HOME**

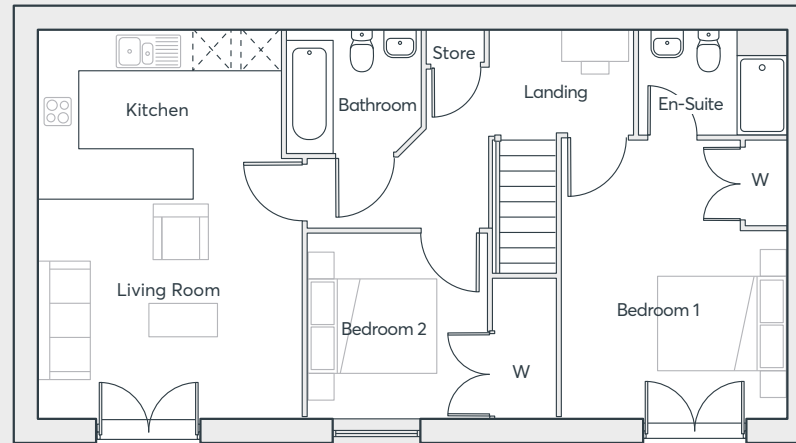
814 sq. ft.

 **ST. MODWEN
HOMES**

THE GENNINGS



GROUND FLOOR



FIRST FLOOR

Garage	6.09m x 3.04m	20'0" x 10'9"
Living Room	6.04m x 4.14m	19'10" x 13'7"
Kitchen	3.80m x 1.89m	12'6" x 6'3"
En-suite	2.30m x 1.61m	7'6" x 5'3"
Bedroom 1	4.34m x 3.46m	14'3" x 11'4"
Bedroom 2	2.86m x 2.80m	9'5" x 9'2"
Bathroom	2.09m x 1.90m	6'10" x 6'3"

Computer generated images are indicative only. External finishes, materials, layouts, window positions and styles may vary. Room sizes are taken to the widest point in each room wall to wall and a tolerance of +/- 5% is allowed. The floor plans are for guidance only and may be subject to change and properties may be "handed" or mirror images of the plans shown. Please check with our Sales Consultant or Selling Agent. SMP 53769/August 2020

BANBURY PLACE

WOLVERHAMPTON

**TWO
BEDROOM
HOME**

814 sq. ft.





Please speak to a member of staff if you require this brochure in an alternative format.

St. Modwen Homes, Two Devon Way, Longbridge, Birmingham, B31 2TS
T: 0121 647 1000 E: sales@stmodwenhomes.co.uk

stmodwenhomes.co.uk