

Development Layout



Bramshall Meadows



New Road, Uttoxeter ST14 5DS
Telephone: 0330 058 6270
www.stmodwenhomes.co.uk

Development Layout – Phase 2B



- The Almond (1857)**
5 bedroom home
- The Mayne (1774)**
4 bedroom home
- The Garnet (1474)**
4 bedroom home
- The Barlow (1379)**
4 bedroom home
- The Chichester (1208)**
4 bedroom home
- The Becket (1210)**
4 bedroom home
- The Bromley (1044)**
3 bedroom home
- The Edwena (1036)**
3 bedroom home
- The Hallvard (979)**
3 bedroom home
- The Kea (936)**
3 bedroom home
- The Webster (936)**
3 bedroom home
- The Houghton (920)**
3 bedroom home

- The Mirin (838)**
3 bedroom home
- The Lawrence (790)**
3 bedroom home
- The Loxley (759)**
2 bedroom home
- The Ferrer (513)**
1 bedroom apartment
- Affordable housing**

BCP = Bin collection point
LEAP = Local Equipped area of play
B&BS = Bin & Bike Store

*Discount to market

Important Notice

The development layout is intended for illustrative purposes only and may change, for example, in response to market demand or ground conditions. It should be treated as general guidance and cannot be relied upon as accurately describing any one of the specified matters prescribed by any order made under Property Misdescriptions act. Landscaping is indicative. Please refer to the Landscape Plan available from our Sales Consultant or Selling Agent. SMP 63594/August 2022

THE ALMOND

- Open plan kitchen/dining/ family room with bi-folding doors to the garden
- Utility with access to rear garden
- Downstairs cloakroom
- Downstairs study perfect for home working or as a play room
- Master bedroom with en-suite and walk-in wardrobe
- En-suite to bedroom 2 and bedroom 3
- Fully fitted family bathroom with bath and walk-in shower
- Full gas fired central heating
- Double glazing and high-performance insulation throughout
- 10 year New Home warranty

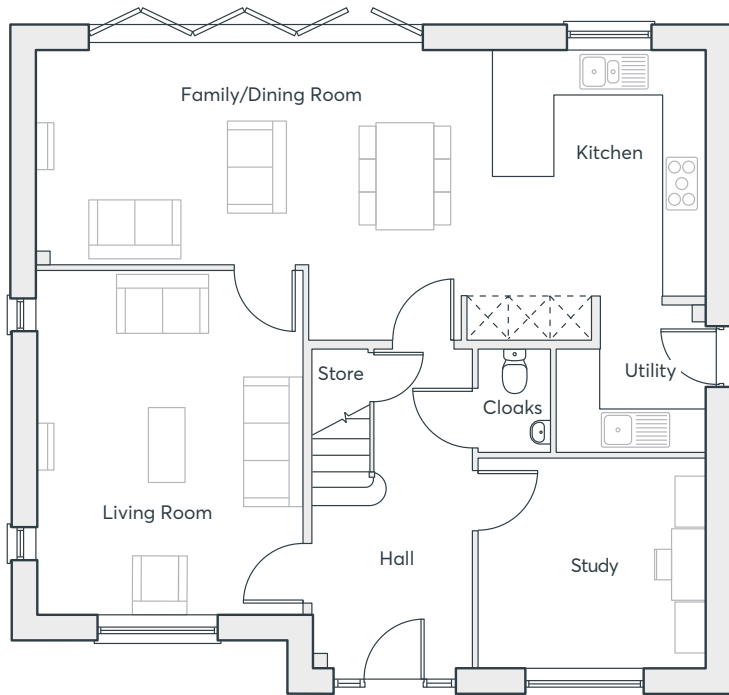
**FIVE
BEDROOM
HOME**

1857 sqft

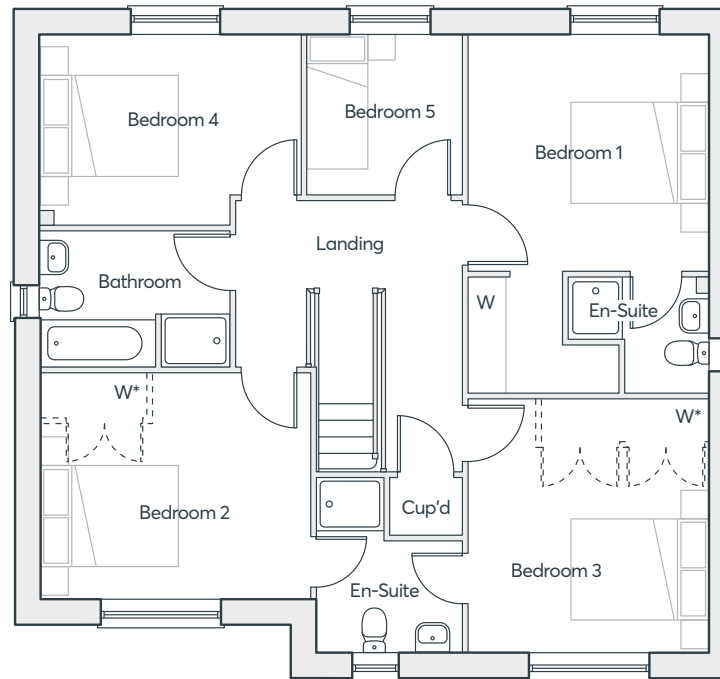
**BRAMSHALL MEADOWS 2B
UTTOXETER**

 **ST.MODWEN
HOMES**

THE ALMOND



GROUND FLOOR



FIRST FLOOR

*Optional wardrobe at additional cost

**FIVE
BEDROOM
HOME**

1857 sqft

Kitchen/Dining/ Family Room	3.60m x 9.86m	11'10" x 32'4"
Living Room	5.01m x 3.90m	16'5" x 12'10"
Study	3.38m x 3.08m	11'1" x 10'1"
Utility	2.22m x 2.14m	7'4" x 7'0"
Bedroom 1	3.57m x 3.49m	11'8" x 11'5"
En-suite 1	2.10m x 1.69m	6'10" x 5'6"
Bedroom 2	3.96m x 3.30m	13'0" x 10'10"
Bedroom 3	3.70m x 3.57m	12'2" x 11'8"
En-suite 2	2.56m x 2.13m	8'5" x 7'0"
Bedroom 4	3.84m x 2.80m	12'7" x 9'2"
Bedroom 5	2.25m x 2.34m	7'5" x 7'8"
Bathroom	2.79m x 2.01m	9'2" x 6'7"

Computer generated images are indicative only. External finishes, materials, layouts, window positions and styles may vary. Room sizes are taken to the widest point in each room wall to wall and a tolerance of +/- 5% is allowed. The floor plans are for guidance only and may be subject to change and properties may be "handed" or mirror images of the plans shown. Please check with our Sales Consultant or Selling Agent. SMP 63594/October 2022.



THE MAYNE V1

- Large open plan living room and kitchen/ dining/family room with Bi-fold doors to the garden
- Downstairs study ideal for home working or as a playroom
- Utility room with access to rear garden
- Downstairs cloakroom
- Master bedroom with en-suite shower room and built-in wardrobe
- En-suite to bedrooms two and three
- Fully fitted family bathroom
- Full gas fired central heating
- Double glazing and high-performance insulation throughout
- 10 year New Home warranty

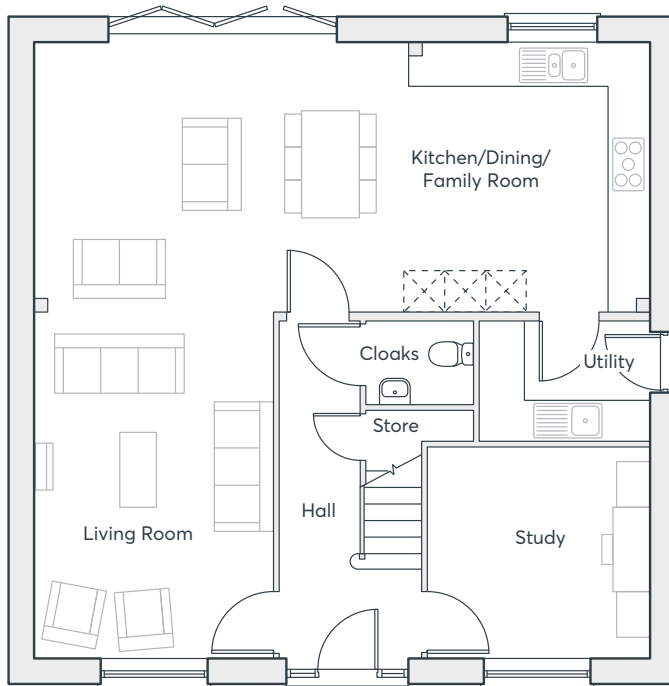
**FOUR
BEDROOM
HOME**

1774 sqft

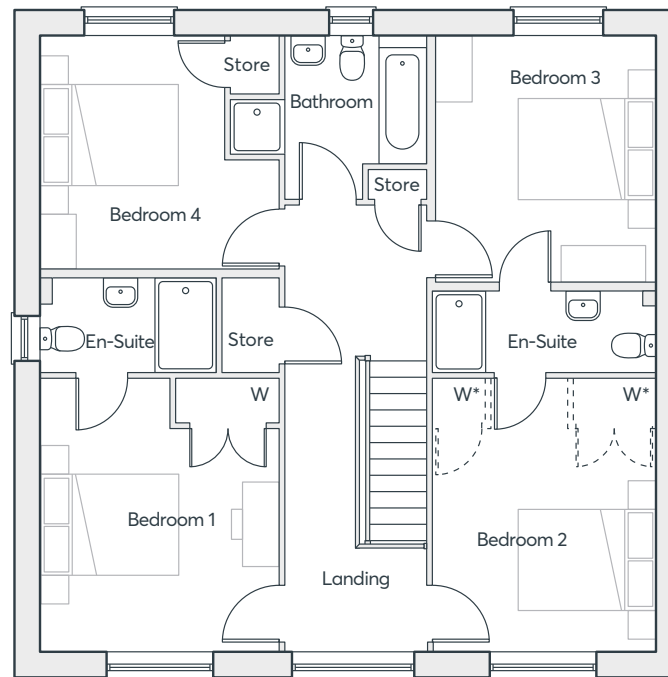
**BRAMSHALL MEADOWS 2B
UTTOXETER**

 **ST.MODWEN
HOMES**

THE MAYNE V1



GROUND FLOOR



FIRST FLOOR

*Optional wardrobe at additional cost

**FOUR
BEDROOM
HOME**

1774 sqft

Kitchen/Dining/ Family Room	9.08m × 3.94m	29'9" × 12'11"
Living Room	4.99m × 3.53m	16'4" × 11'7"
Study	3.28m × 3.13m	10'9" × 10'3"
Utility	2.51m × 1.77m	8'3" × 5'10"
Bedroom 1	4.01m × 3.53m	13'2" × 11'7"
En-suite 1	2.61m × 1.40m	8'7" × 4'7"
Bedroom 2	4.01m × 3.28m	13'2" × 10'9"
Bedroom 3	3.66m × 3.26m	12'0" × 10'8"
En-suite 2	3.28m × 1.2m	10'9" × 3'11"
Bedroom 4	3.53m × 3.46m	11'7" × 11'4"
Bathroom	2.89m × 2.44m	9'6" × 8'0"

Computer generated images are indicative only. External finishes, materials, layouts, window positions and styles may vary. Room sizes are taken to the widest point in each room wall to wall and a tolerance of +/- 5% is allowed. The floor plans are for guidance only and may be subject to change and properties may be "handed" or mirror images of the plans shown. Please check with our Sales Consultant or Selling Agent. SMP 63594/October 2022

 **ST.MODWEN
HOMES**

THE MAYNE V2

- Large open plan living room and kitchen/ dining/family room with Bi-fold doors to the garden
- Downstairs study ideal for home working or as a playroom
- Utility room with access to rear garden
- Downstairs cloakroom
- Master bedroom with en-suite shower room and built-in wardrobe
- En-suite to bedrooms two and three
- Fully fitted family bathroom
- Full gas fired central heating
- Double glazing and high-performance insulation throughout
- 10 year New Home warranty

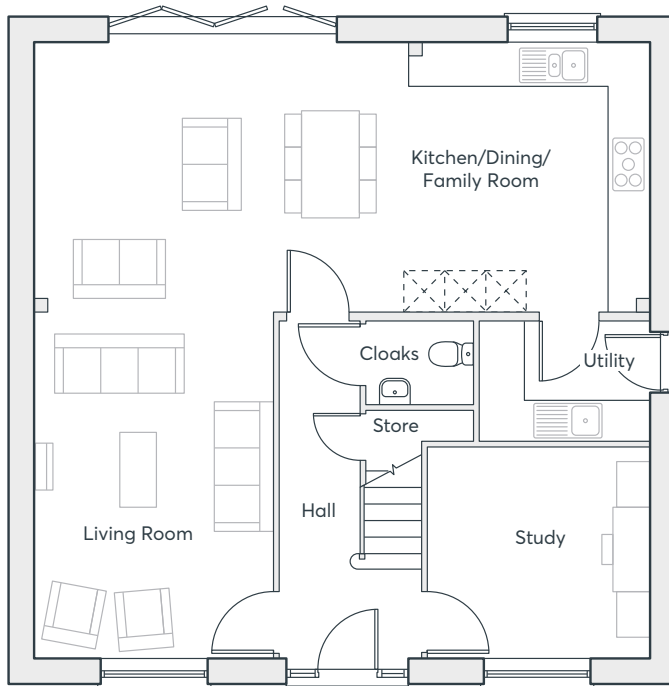
**FOUR
BEDROOM
HOME**

1774 sqft

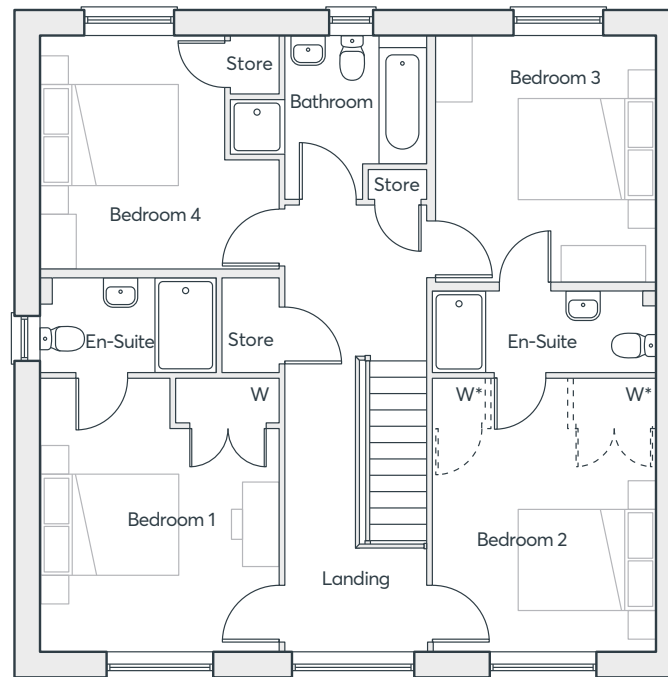
BRAMSHALL MEADOWS 2B
UTTOXETER

 **ST.MODWEN
HOMES**

THE MAYNE V2



GROUND FLOOR



FIRST FLOOR

*Optional wardrobe at additional cost

**FOUR
BEDROOM
HOME**

1774 sqft

Kitchen/Dining/ Family Room	9.08m × 3.94m	29'9" × 12'11"
Living Room	4.99m × 3.53m	16'4" × 11'7"
Study	3.28m × 3.13m	10'9" × 10'3"
Utility	2.51m × 1.77m	8'3" × 5'10"
Bedroom 1	4.01m × 3.53m	13'2" × 11'7"
En-suite 1	2.61m × 1.40m	8'7" × 4'7"
Bedroom 2	4.01m × 3.28m	13'2" × 10'9"
Bedroom 3	3.66m × 3.26m	12'0" × 10'8"
En-suite 2	3.28m × 1.2m	10'9" × 3'11"
Bedroom 4	3.53m × 3.46m	11'7" × 11'4"
Bathroom	2.89m × 2.44m	9'6" × 8'0"

Computer generated images are indicative only. External finishes, materials, layouts, window positions and styles may vary. Room sizes are taken to the widest point in each room wall to wall and a tolerance of +/- 5% is allowed. The floor plans are for guidance only and may be subject to change and properties may be "handed" or mirror images of the plans shown. Please check with our Sales Consultant or Selling Agent. SMP 63594/October 2022

 **ST.MODWEN
HOMES**

THE GARNET V1

- Open plan dining/kitchen with integrated appliances and French doors to the garden
- Living room with French doors to the rear garden
- Separate family room
- Downstairs cloakroom
- Utility room with access to rear garden
- Master bedroom with en-suite and walk-in wardrobe
- Full gas fired central heating
- Double glazing and high-performance insulation throughout
- 10 year New Home warranty

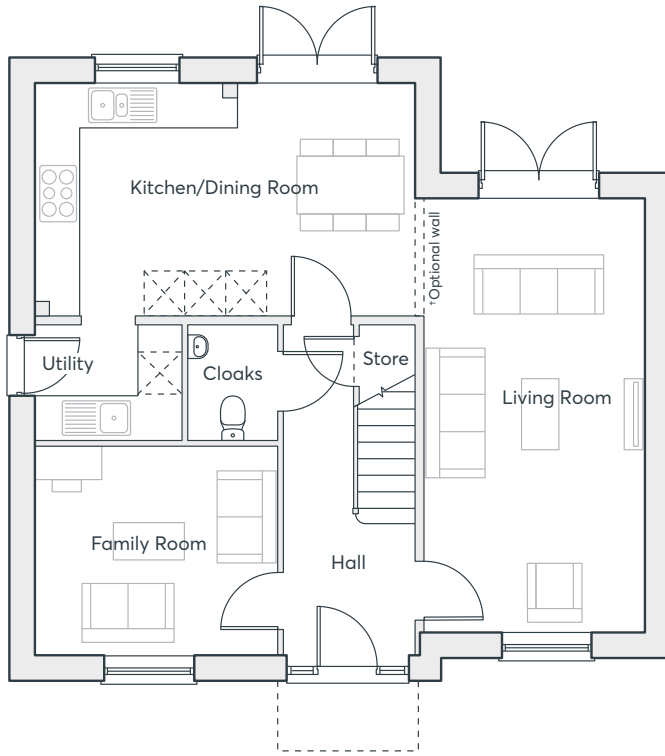
**FOUR
BEDROOM
HOME**

1474 sqft

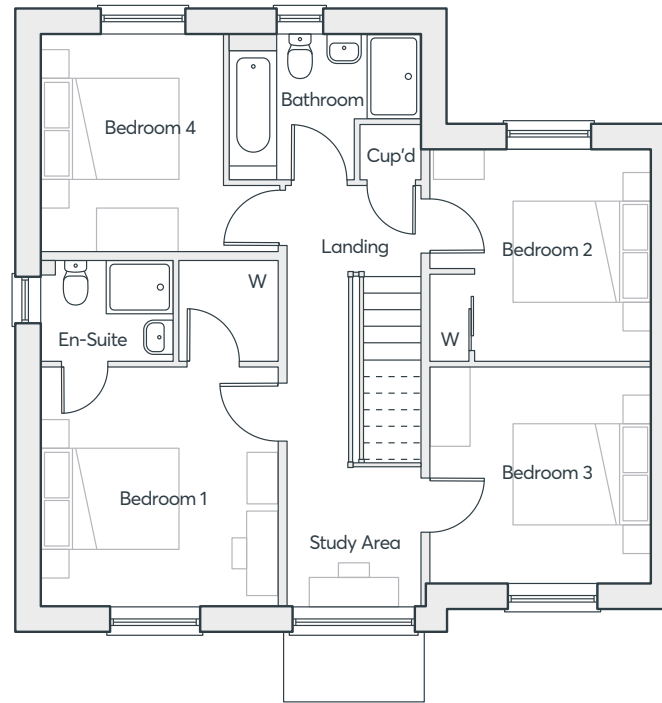
**BRAMSHALL MEADOWS 2B
UTTOXETER**

 **ST.MODWEN
HOMES**

THE GARNET V1



GROUND FLOOR



FIRST FLOOR

†Optional wall (flexible living layout)

**FOUR
BEDROOM
HOME**

1474 sqft

Kitchen	3.41m × 3.60m	11'2" × 11'10"
Dining Room	3.41m × 1.98m	11'2" × 6'6"
Utility	1.68m × 2.16m	5'6" × 7'1"
Living Room	6.37m × 3.23m	20'11" × 10'7"
Family Room	3.07m × 3.56m	10'1" × 11'8"
Bedroom 1	3.53m × 3.48m	11'7" × 11'5"
En-suite	1.51m × 1.95m	4'11" × 6'5"
Bedroom 2	3.08m × 3.29m	10'1" × 10'9"
Bedroom 3	3.21m × 3.26m	10'6" × 10'8"
Bedroom 4	3.17m × 3.51m	10'5" × 11'6"
Bathroom	2.11m × 2.82m	6'11" × 9'3"

Computer generated images are indicative only. External finishes, materials, layouts, window positions and styles may vary. Room sizes are taken to the widest point in each room wall to wall and a tolerance of +/- 5% is allowed. The floor plans are for guidance only and may be subject to change and properties may be "handed" or mirror images of the plans shown. Please check with our Sales Consultant or Selling Agent. SMP 63594/October 2022

 **ST.MODWEN
HOMES**

THE BARLOW V1

- Open plan dining/family/living room and kitchen with integrated appliances and Bi-fold doors to the garden
- Downstairs study ideal for home working or as a play room
- Downstairs cloakroom
- Utility room with access to rear garden
- Master bedroom with en-suite and walk-in wardrobe
- Full gas fired central heating
- Double glazing and high-performance insulation throughout
- 10 year New Home warranty

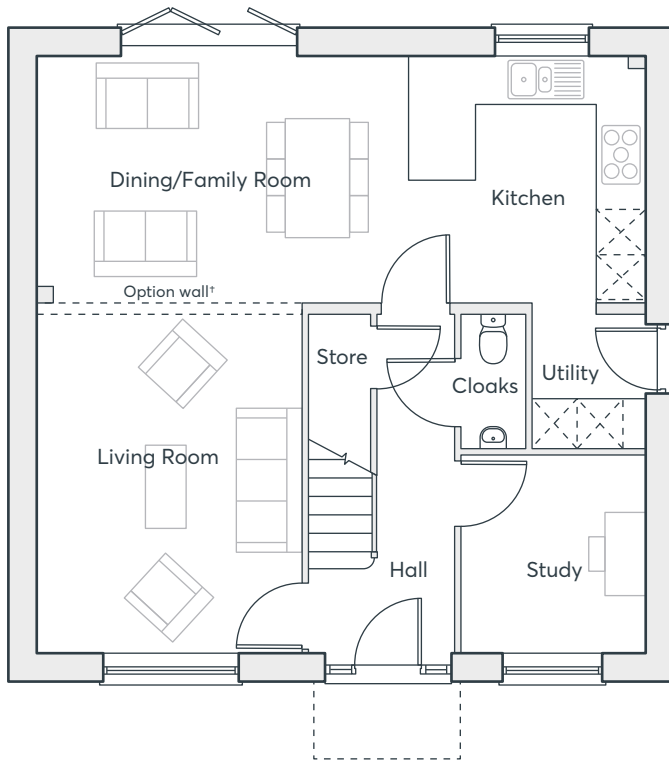
**FOUR
BEDROOM
HOME**

1379 sqft

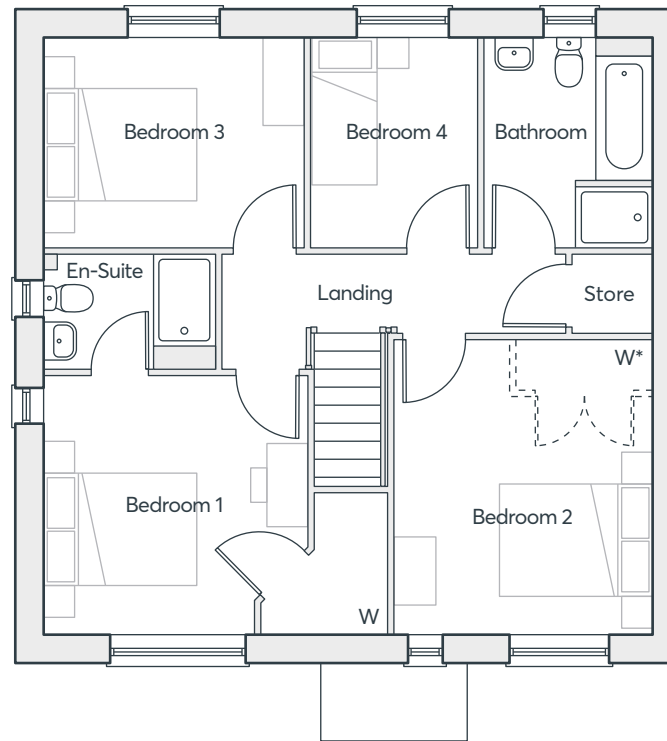
**BRAMSHALL MEADOWS 2B
UTTOXETER**

 **ST.MODWEN
HOMES**

THE BARLOW V1



GROUND FLOOR



FIRST FLOOR

*Optional wall (flexible living layout)
*Optional wardrobe at additional cost

**FOUR
BEDROOM
HOME**

1379 sqft

Living Room	3.50m × 4.65m	11'6" × 15'3"
Kitchen/Dining	8.06m × 3.28m	26'5" × 10'9"
Study	2.45m × 2.65m	8'0" × 8'8"
Utility	1.50m × 1.77m	4'11" × 5'10"
Bedroom 1	3.50m × 3.45m	11'6" × 11'4"
En-suite	2.28m × 1.52m	7'6" × 5'0"
Bedroom 2	3.42m × 3.91m	11'3" × 12'10"
Bedroom 3	3.45m × 2.76m	11'4" × 9'1"
Bedroom 4	2.21m × 2.80m	7'3" × 9'2"
Bathroom	2.23m × 2.80m	7'4" × 9'2"

Computer generated images are indicative only. External finishes, materials, layouts, window positions and styles may vary. Room sizes are taken to the widest point in each room wall to wall and a tolerance of +/- 5% is allowed. The floor plans are for guidance only and may be subject to change and properties may be "handed" or mirror images of the plans shown. Please check with our Sales Consultant or Selling Agent. SMP 63594/October 2022



THE BARLOW V2

- Open plan dining/family/living room and kitchen with integrated appliances and bi-fold doors to the garden
- Downstairs study ideal for home working or as a play room
- Downstairs cloakroom
- Utility room with access to rear garden
- Master bedroom with en-suite and walk-in wardrobe
- Full gas fired central heating
- Double glazing and high-performance insulation throughout
- 10 year New Home warranty

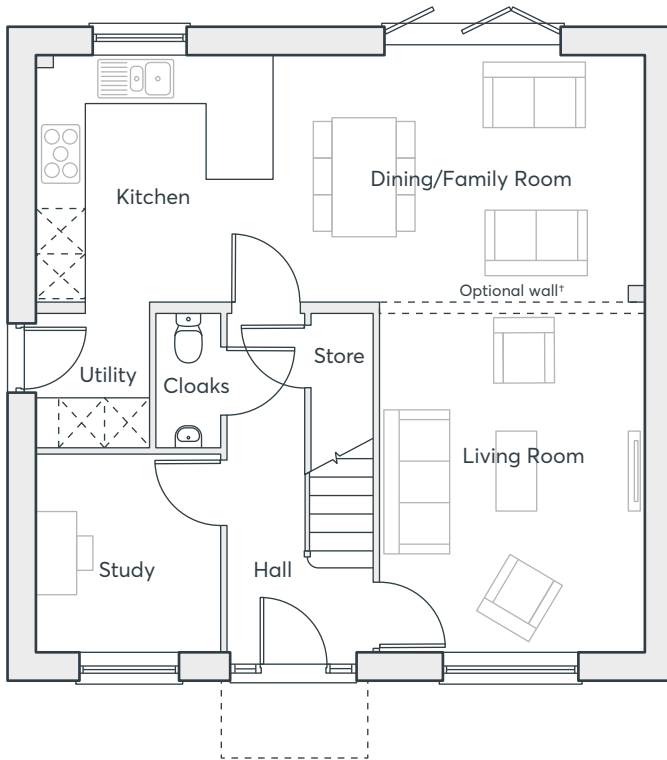
**FOUR
BEDROOM
HOME**

1379 sqft

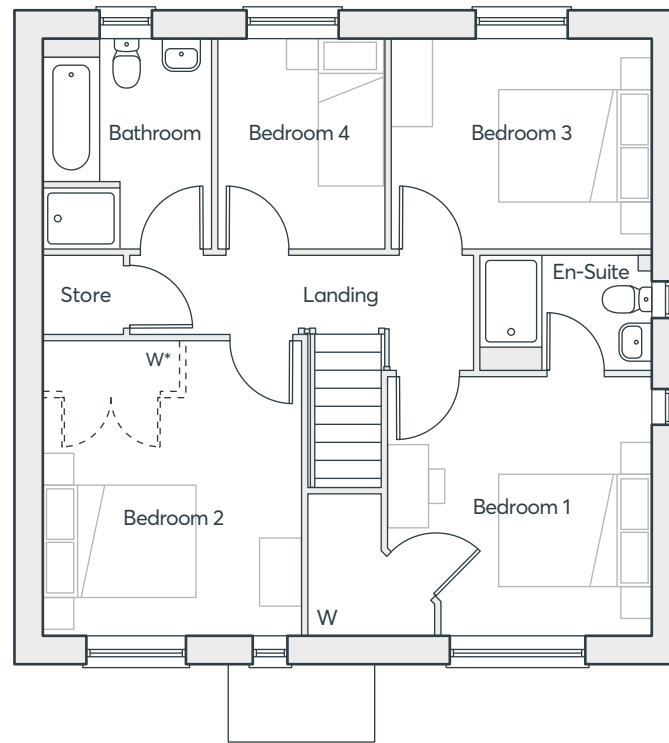
**BRAMSHALL MEADOWS 2B
UTTOXETER**

 **ST.MODWEN
HOMES**

THE BARLOW V2



GROUND FLOOR



FIRST FLOOR

*Optional wall (flexible living layout)
*Optional wardrobe at additional cost

**FOUR
BEDROOM
HOME**

1379 sqft

Living Room	3.50m × 4.65m	11'6" × 15'3"
Kitchen/Dining	8.06m × 3.28m	26'5" × 10'9"
Study	2.45m × 2.65m	8'0" × 8'8"
Utility	1.50m × 1.77m	4'11" × 5'10"
Bedroom 1	3.50m × 3.45m	11'6" × 11'4"
En-suite	2.28m × 1.52m	7'6" × 5'0"
Bedroom 2	3.42m × 3.91m	11'3" × 12'10"
Bedroom 3	3.45m × 2.76m	11'4" × 9'1"
Bedroom 4	2.21m × 2.80m	7'3" × 9'2"
Bathroom	2.23m × 2.80m	7'4" × 9'2"

Computer generated images are indicative only. External finishes, materials, layouts, window positions and styles may vary. Room sizes are taken to the widest point in each room wall to wall and a tolerance of +/- 5% is allowed. The floor plans are for guidance only and may be subject to change and properties may be "handed" or mirror images of the plans shown. Please check with our Sales Consultant or Selling Agent. SMP 63594/October 2022

 **ST.MODWEN
HOMES**

THE CHICHESTER

- Open plan kitchen, dining and family room with bi-folding doors onto garden
- Separate living room
- Downstairs study ideal for home working or as a play room
- Downstairs cloakroom
- Master bedroom with en-suite and built-in wardrobe
- Fully fitted bathroom with walk-in shower
- Full gas fired central heating
- Double glazing and high-performance insulation throughout
- 10 year New Home warranty

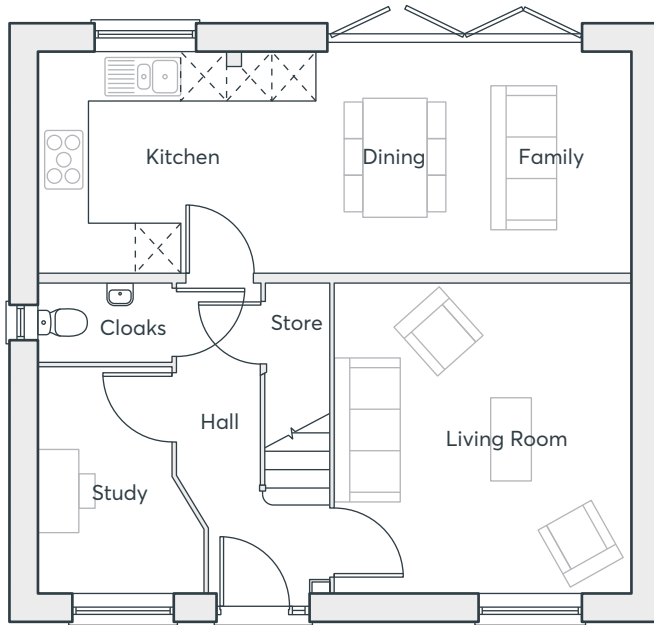
**FOUR
BEDROOM
HOME**

1208 sqft

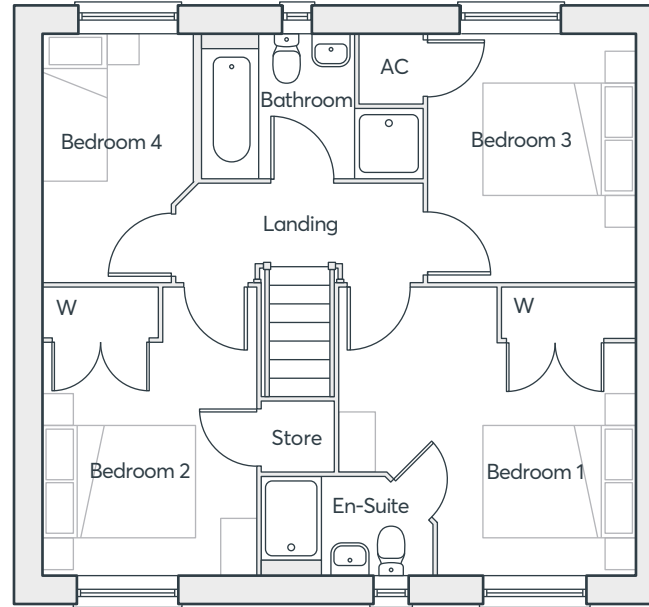
**BRAMSHALL MEADOWS 2B
UTTOXETER**

 **ST. MODWEN
HOMES**

THE CHICHESTER



GROUND FLOOR



FIRST FLOOR

Living Room	4.10m x 3.92m	13'5" x 12'10"
Kitchen	7.84m x 2.91m	25'8" x 9'7"
Study	3.00m x 2.17m	9'10" x 7'1"
Bedroom 1	3.92m x 3.80m	12'10" x 12'6"
En-suite	2.26m x 1.31m	7'5" x 4'4"
Bedroom 2	3.80m x 2.79m	12'6" x 9'2"
Bedroom 3	3.27m x 2.75m	10'9" x 9'0"
Bedroom 4	3.27m x 1.98m	10'9" x 6'6"
Bathroom	2.91m x 1.90m	9'6" x 6'3"

Computer generated images are indicative only. External finishes, materials, layouts, window positions and styles may vary. Room sizes are taken to the widest point in each room wall to wall and a tolerance of +/- 5% is allowed. The floor plans are for guidance only and may be subject to change and properties may be "handed" or mirror images of the plans shown. Please check with our Sales Consultant or Selling Agent. SMP 63594/October 2022

**FOUR
BEDROOM
HOME**

1208 sqft

 **ST.MODWEN
HOMES**



THE BECKET V1

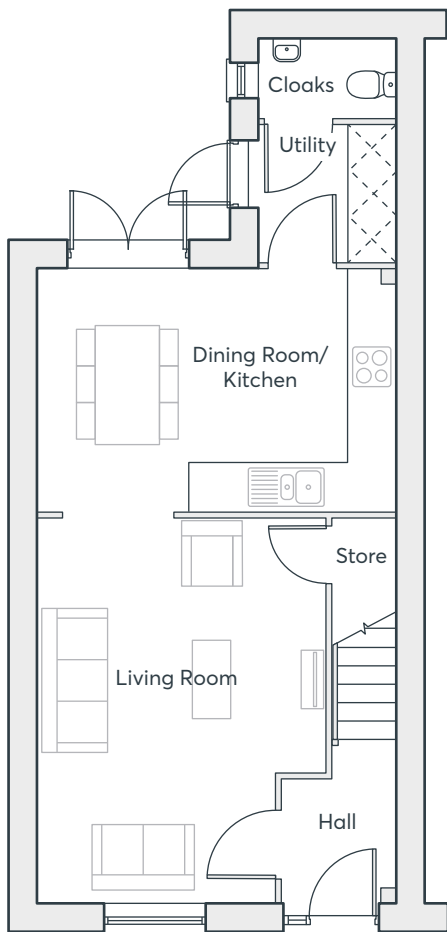
- Kitchen/dining room with French doors to the garden
- Utility room and cloakroom off the kitchen
- Large lounge opening onto a dining area
- Master bedroom with built in wardrobe, dressing area and en-suite spanning the entire top floor
- Three bedrooms and family bathroom on first floor
- Full gas fired central heating
- Double glazing and high-performance insulation throughout
- 10 year New Home warranty

**FOUR
BEDROOM
HOME**

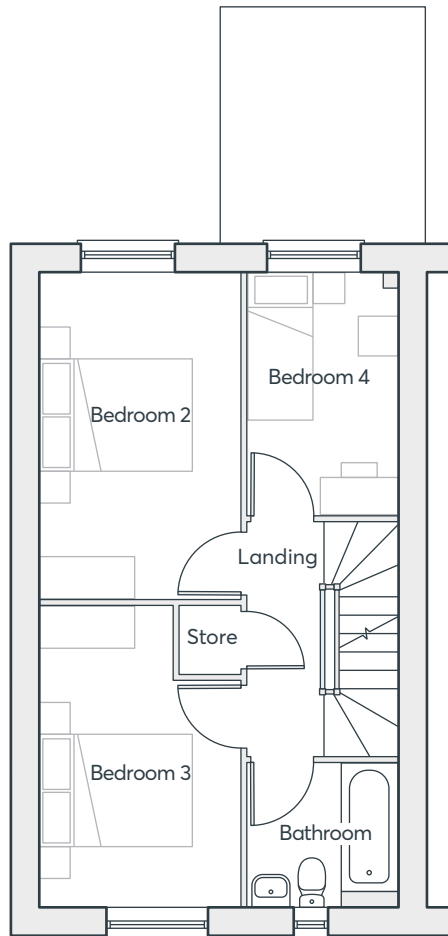
1210 sqft

**BRAMSHALL MEADOWS 2B
UTTOXETER**

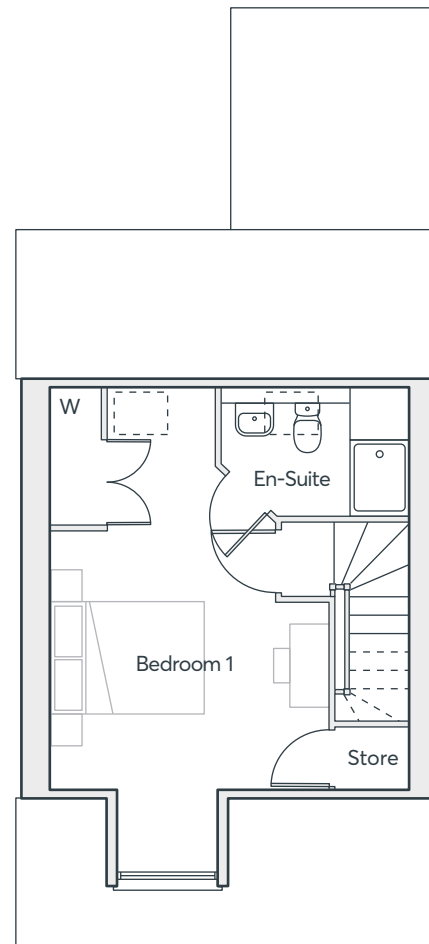
 **ST.MODWEN
HOMES**



GROUND FLOOR



FIRST FLOOR



SECOND FLOOR

THE BECKET V1

Dining Room	3.22m x 1.99m	10'7" x 6'6"
Kitchen	3.22m x 2.77m	10'7" x 9'1"
Living Room	5.09m x 3.82m	16'8" x 12'6"
Utility	1.81m x 1.83m	5'11" x 6'0"
Bedroom 2	4.31m x 2.65m	14'2" x 8'8"
Bedroom 3	3.97m x 2.65m	13'0" x 8'8"
Bedroom 4	3.22m x 2.02m	10'7" x 6'8"
Bathroom	1.91m x 2.02m	6'3" x 6'8"
Bedroom 1	6.45 x 3.69m	21'2" x 12'1"
En-suite	1.69m x 2.50m	5'7" x 8'3"

Computer generated images are indicative only. External finishes, materials, layouts, window positions and styles may vary. Room sizes are taken to the widest point in each room wall to wall and a tolerance of +/- 5% is allowed. The floor plans are for guidance only and may be subject to change and properties may be "handed" or mirror images of the plans shown. Please check with our Sales Consultant or Selling Agent. SMP 63594/October 2022

**FOUR
BEDROOM
HOME**

1210 sqft



THE BECKET V2

- Kitchen/dining room with French doors to the garden
- Utility room and cloakroom off the kitchen
- Large lounge opening onto a dining area
- Master bedroom with built in wardrobe, dressing area and en-suite spanning the entire top floor
- Three bedrooms and family bathroom on first floor
- Full gas fired central heating
- Double glazing and high-performance insulation throughout
- 10 year New Home warranty

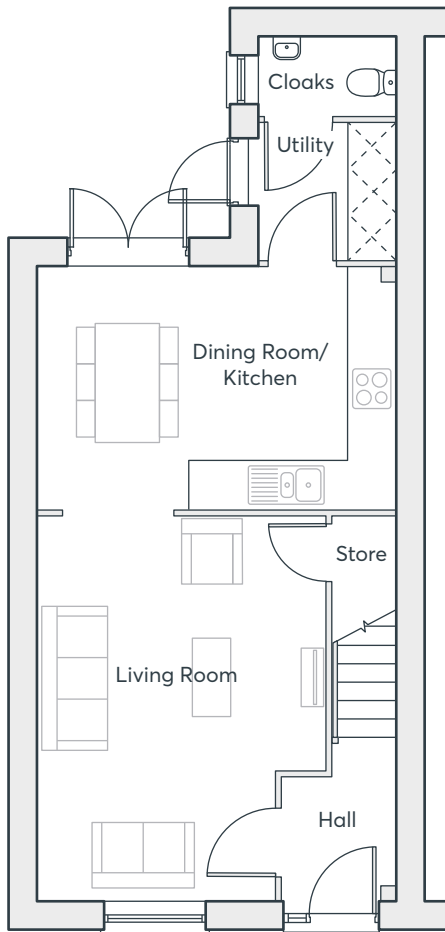
**FOUR
BEDROOM
HOME**

1210 sqft

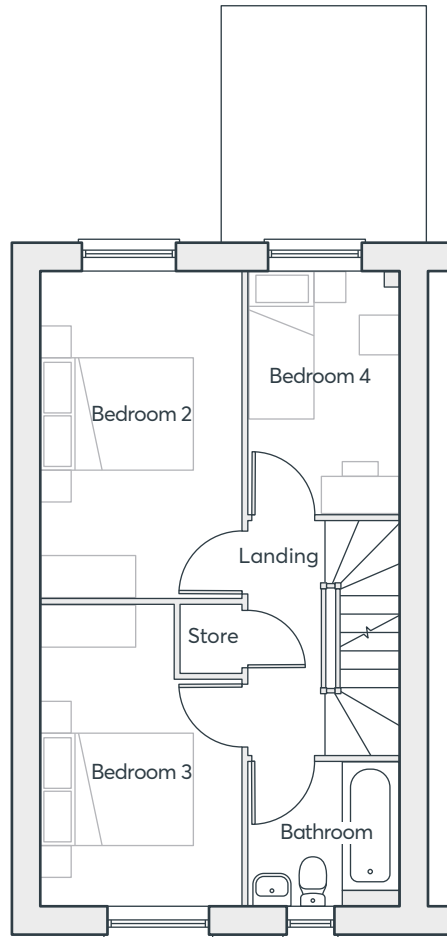
BRAMSHALL MEADOWS 2B
UTTOXETER

 **ST.MODWEN
HOMES**

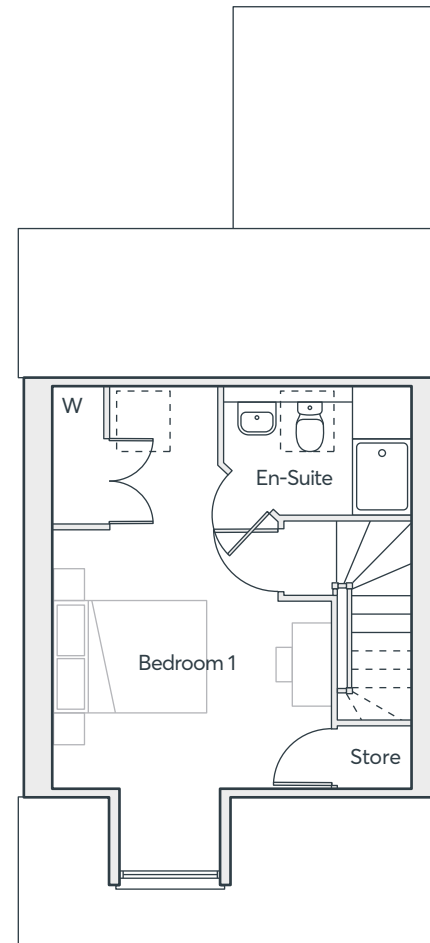
THE BECKET V2



GROUND FLOOR



FIRST FLOOR



SECOND FLOOR

Dining Room	3.22m x 1.99m	10'7" x 6'6"
Kitchen	3.22m x 2.77m	10'7" x 9'1"
Living Room	5.09m x 3.82m	16'8" x 12'6"
Utility	1.81m x 1.83m	5'11" x 6'0"
Bedroom 2	4.31m x 2.65m	14'2" x 8'8"
Bedroom 3	3.97m x 2.65m	13'0" x 8'8"
Bedroom 4	3.22m x 2.02m	10'7" x 6'8"
Bathroom	1.91m x 2.02m	6'3" x 6'8"
Bedroom 1	6.45 x 3.69m	21'2" x 12'1"
En-suite	1.69m x 2.50m	5'7" x 8'3"

Computer generated images are indicative only. External finishes, materials, layouts, window positions and styles may vary. Room sizes are taken to the widest point in each room wall to wall and a tolerance of +/- 5% is allowed. The floor plans are for guidance only and may be subject to change and properties may be "handed" or mirror images of the plans shown. Please check with our Sales Consultant or Selling Agent. SMP 63594/October 2022

**FOUR
BEDROOM
HOME**

1210 sqft

 **ST.MODWEN
HOMES**

THE BROMLEY

- Living room with French doors to the garden
- Kitchen/dining room
- Downstairs cloakroom
- Under stairs storage cupboard
- Fully fitted family bathroom
- Full gas fired central heating
- Double glazing and high-performance insulation throughout
- 10 year New Home warranty

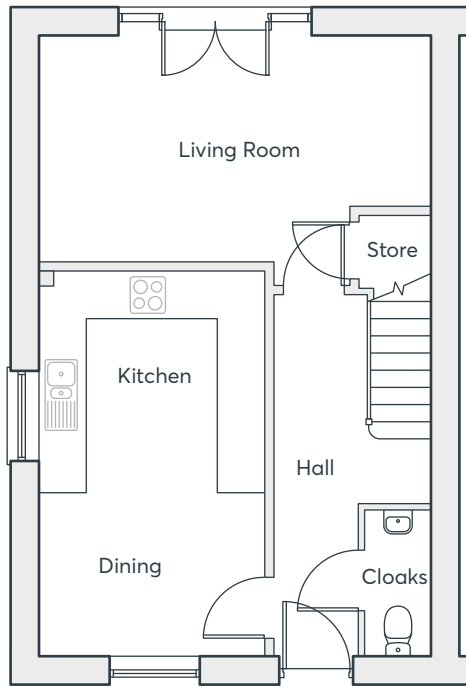
**THREE
BEDROOM
HOME**

1044 sqft

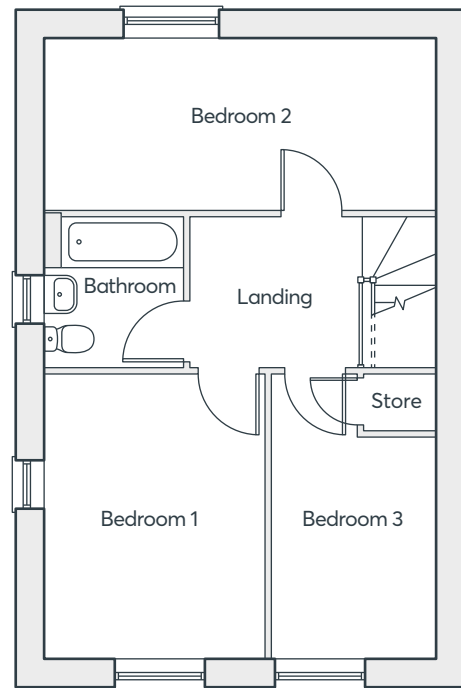
BRAMSHALL MEADOWS 2B
UTTOXETER

 **ST.MODWEN
HOMES**

THE BROMLEY



GROUND FLOOR



FIRST FLOOR

Living Room	5.48m × 3.17m	18'0" × 10'5"
Kitchen/Dining	3.14m × 5.42m	10'4" × 17'9"
Bedroom 1	3.09m × 4.00m	10'2" × 13'2"
Bedroom 2	5.48m × 2.44m	18'0" × 8'0"
Bedroom 3	2.28m × 3.12m	7'6" × 10'2"
Bathroom	1.97m × 2.10m	6'6" × 6'11"

**THREE
BEDROOM
HOME**

1044 sqft

Computer generated images are indicative only. External finishes, materials, layouts, window positions and styles may vary. Room sizes are taken to the widest point in each room wall to wall and a tolerance of +/- 5% is allowed. The floor plans are for guidance only and may be subject to change and properties may be "handed" or mirror images of the plans shown. Please check with our Sales Consultant or Selling Agent. SMP 63594/October 2022

 **ST.MODWEN
HOMES**



THE EDWENA

- Open plan kitchen/dining room/living with French doors to the garden
- Downstairs cloakroom
- Utility cupboard
- Under stairs storage cupboard
- Master bedroom with built-in wardrobes and en-suite
- Fully fitted family bathroom
- Full gas fired central heating
- Double glazing and high-performance insulation throughout
- 10 year New Home warranty

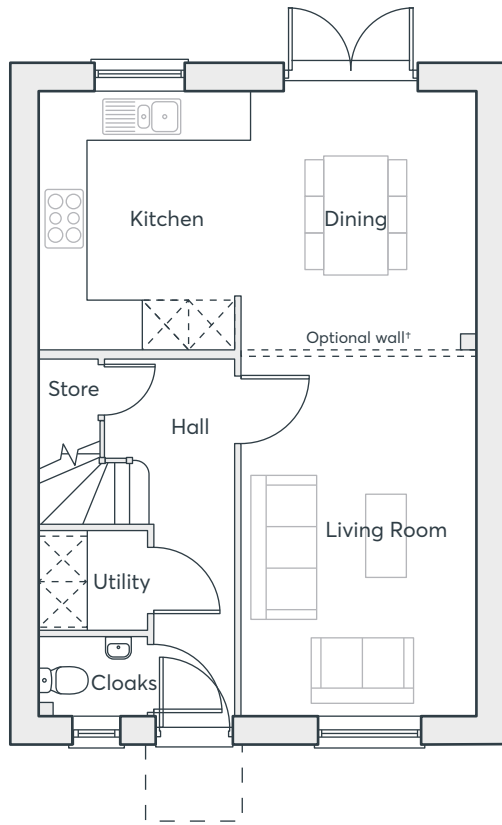
**THREE
BEDROOM
HOME**

1036 sqft

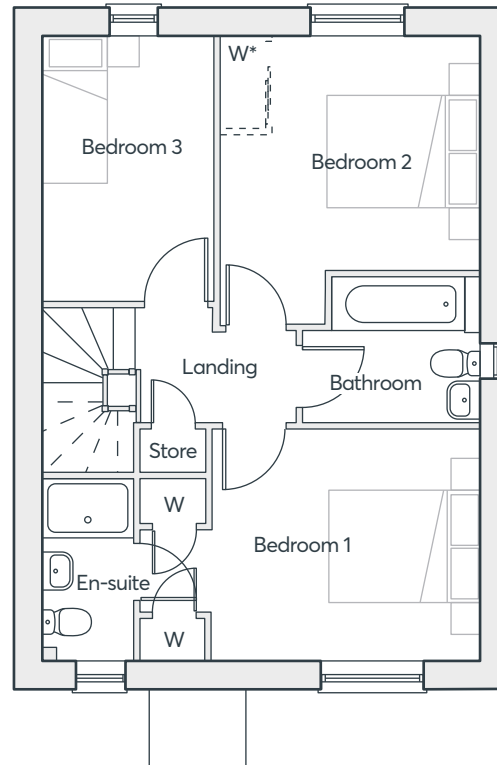
BRAMSHALL MEADOWS 2B
UTTOXETER

 **ST.MODWEN
HOMES**

THE EDWENA



GROUND FLOOR



FIRST FLOOR

*Optional wall (flexible living layout)
*Optional wardrobe at additional cost

THREE BEDROOM HOME

1036 sqft

Living Room	3.11m × 4.47m	10'1" × 14'6"
Kitchen/Dining	5.81m × 3.43m	19'1" × 11'3"
Utility	1.45m × 1.30m	4'9" × 4'3"
Bedroom 1	3.55m × 3.08m	11'8" × 10'1"
En-Suite	1.20m × 2.44m	3'11" × 8'0"
Bedroom 2	2.28m × 3.10m	7'6" × 10'2"
Bedroom 3	2.27m × 3.50m	7'2" × 11'6"
Bathroom	2.36m × 1.93m	7'6" × 6'3"

Computer generated images are indicative only. External finishes, materials, layouts, window positions and styles may vary. Room sizes are taken to the widest point in each room wall to wall and a tolerance of +/- 5% is allowed. The floor plans are for guidance only and may be subject to change and properties may be "handed" or mirror images of the plans shown. Please check with our Sales Consultant or Selling Agent. SMP 63594/October 2022





THE KEA V4

- Kitchen/dining room with French doors to the garden
- Separate living room
- Utility cupboard with space for washing machine and dryer
- Downstairs cloakroom
- Master bedroom with built-in wardrobe, en-suite and Juliet balcony
- Fully fitted family bathroom
- Full gas fired central heating
- Double glazing and high-performance insulation throughout
- 10 year New Home warranty

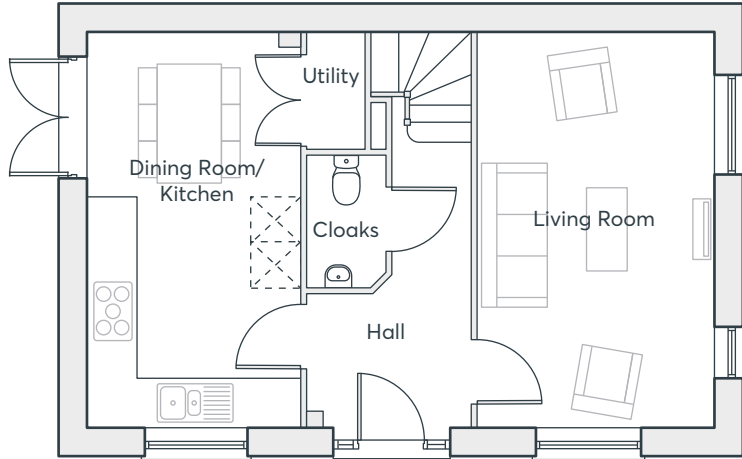
**THREE
BEDROOM
HOME**

936 sqft

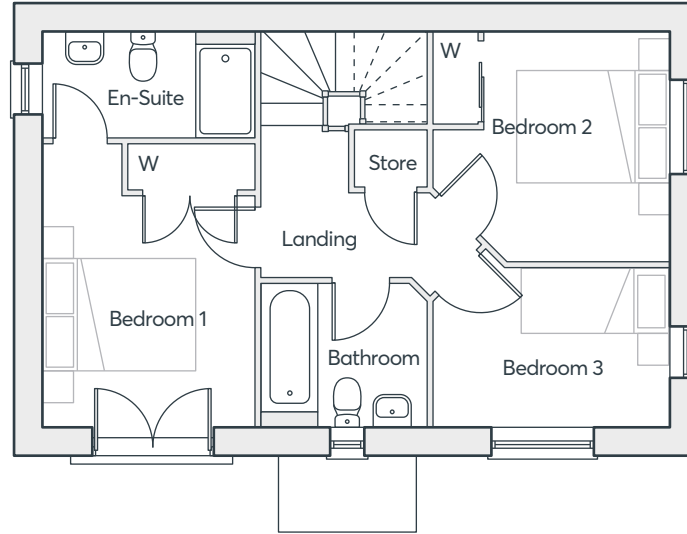
BRAMSHALL MEADOWS 2B
UTTOXETER

 **ST.MODWEN
HOMES**

THE KEA V4



GROUND FLOOR



FIRST FLOOR

Living Room	3.07m x 5.25m	10'1" x 17'3"
Kitchen/Dining	2.77m x 5.25m	9'1" x 17'3"
Cloakroom	1.03m x 1.75m	3'4" x 5'9"
Bedroom 1	2.83m x 3.75m	9'3" x 12'3"
En-suite	2.83m x 1.42m	9'3" x 4'8"
Bedroom 2	3.13m x 3.06m	10'3" x 10'0"
Bedroom 3	3.12m x 2.11m	10'3" x 6'11"
Bathroom	2.16m x 1.90m	7'1" x 6'3"

Computer generated images are indicative only. External finishes, materials, layouts, window positions and styles may vary. Room sizes are taken to the widest point in each room wall to wall and a tolerance of +/- 5% is allowed. The floor plans are for guidance only and may be subject to change and properties may be "handed" or mirror images of the plans shown. Please check with our Sales Consultant or Selling Agent. SMP 63594/October 2022

**THREE
BEDROOM
HOME**

936 sqft



THE WEBSTER V2

- Open plan dining/kitchen with French doors to the garden
- Separate living room
- Downstairs cloakroom
- Utility cupboard with space for washing machine and dryer
- Master bedroom with en-suite, built-in wardrobe and Juliet balcony
- Fully fitted family bathroom
- Full gas fired central heating
- Double glazing and high-performance insulation throughout
- 10 year New Home warranty

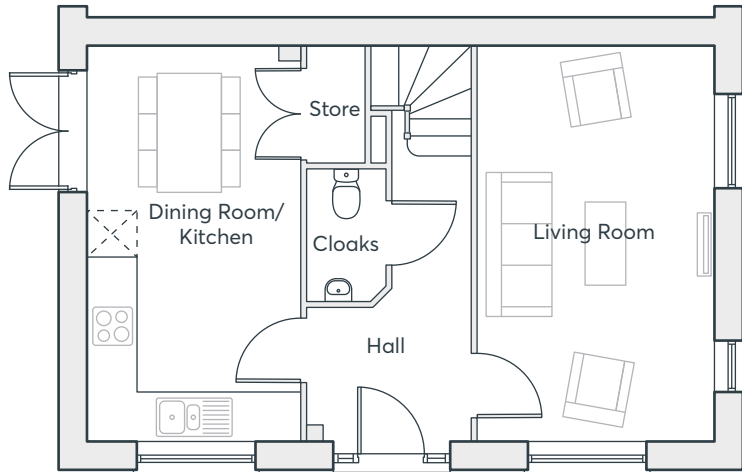
**THREE
BEDROOM
HOME**

936 sqft

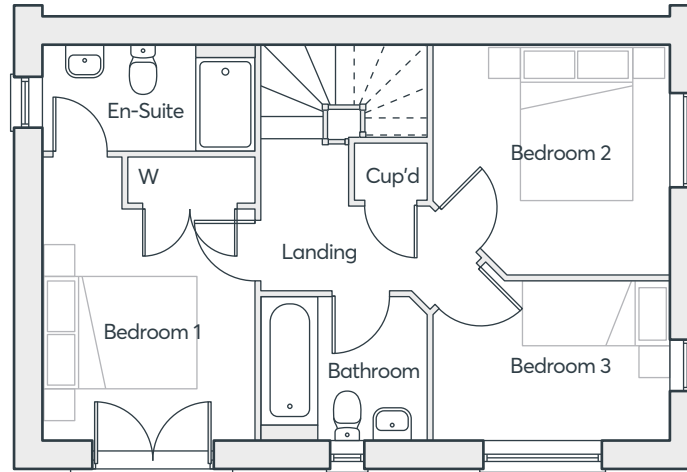
BRAMSHALL MEADOWS 2B
UTTOXETER

 **ST. MODWEN
HOMES**

THE WEBSTER V2



GROUND FLOOR



FIRST FLOOR

Living Room	3.07m × 5.25m	10'1" × 17'3"
Kitchen/Dining	2.77m × 5.25m	9'1" × 17'3"
Cloakroom	1.03m × 1.75m	3'4" × 5'9"
Bedroom 1	2.83m × 3.75m	9'3" × 12'3"
En-suite	2.83m × 1.42m	9'3" × 4'8"
Bedroom 2	3.13m × 3.06m	10'3" × 10'0"
Bedroom 3	3.12m × 2.11m	10'3" × 6'11"
Bathroom	2.16m × 1.90m	7'1" × 6'3"

**THREE
BEDROOM
HOME**

936 sqft

Computer generated images are indicative only. External finishes, materials, layouts, window positions and styles may vary. Room sizes are taken to the widest point in each room wall to wall and a tolerance of +/- 5% is allowed. The floor plans are for guidance only and may be subject to change and properties may be "handed" or mirror images of the plans shown. Please check with our Sales Consultant or Selling Agent. SMP 63594/October 2022



THE HOUGHTON

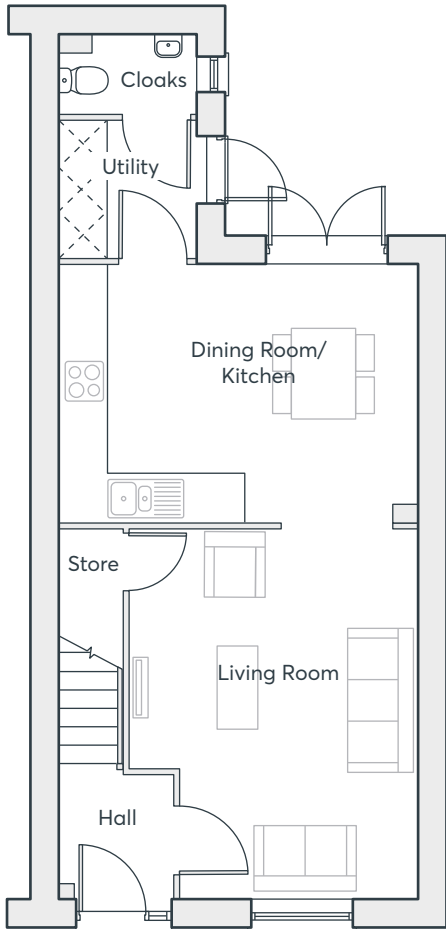
- Front facing living room
- Open plan dining/kitchen with French doors to the garden
- Utility room and cloakroom off the kitchen
- Under stairs store
- Master bedroom with en-suite and built-in wardrobe
- Fully fitted family bathroom
- Full gas fired central heating
- Double glazing and high-performance insulation throughout
- 10 year New Home warranty

**THREE
BEDROOM
HOME**

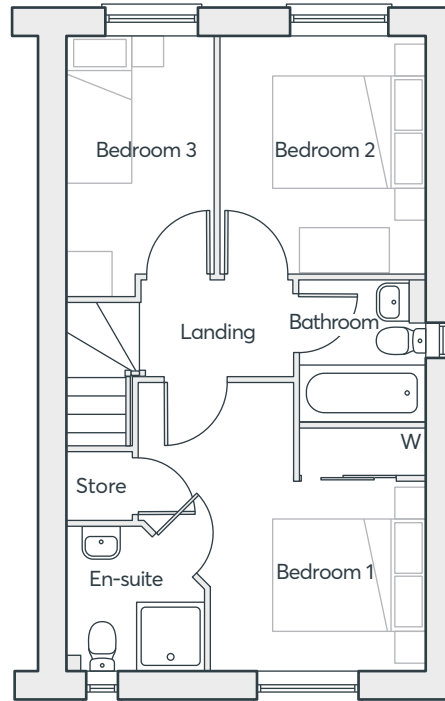
920 sqft

**BRAMSHALL MEADOWS 2B
UTTOXETER**

 **ST.MODWEN
HOMES**



GROUND FLOOR



FIRST FLOOR

THE HOUGHTON

Living Room	3.17m x 4.87m	15'7" x 16'0"
Kitchen/Dining	4.76m x 3.44m	15'7" x 11'3"
Utility	1.83m x 1.81m	6'0" x 5'11"
Cloakroom	1.83m x 1.05m	6'0" x 3'5"
Bedroom 1	2.87m x 3.19m	9'5" x 10'6"
En-suite	1.80m x 1.93m	5'11" x 6'4"
Bedroom 2	2.74m x 3.13m	9'0" x 10'3"
Bedroom 3	1.93m x 3.44m	6'4" x 11'3"
Bathroom	1.70m x 1.87m	5'7" x 6'2"

Computer generated images are indicative only. External finishes, materials, layouts, window positions and styles may vary. Room sizes are taken to the widest point in each room wall to wall and a tolerance of +/- 5% is allowed. The floor plans are for guidance only and may be subject to change and properties may be "handed" or mirror images of the plans shown. Please check with our Sales Consultant or Selling Agent. SMP 63594/October 2022

**THREE
BEDROOM
HOME**

920 sqft





THE MIRIN

- Open plan kitchen/dining room with French doors to the rear garden
- Downstairs cloakroom
- Master bedroom with en-suite and built-in wardrobe
- Fully fitted family bathroom
- Full gas fired central heating
- Double glazing and high-performance insulation throughout
- 10 year New Home warranty

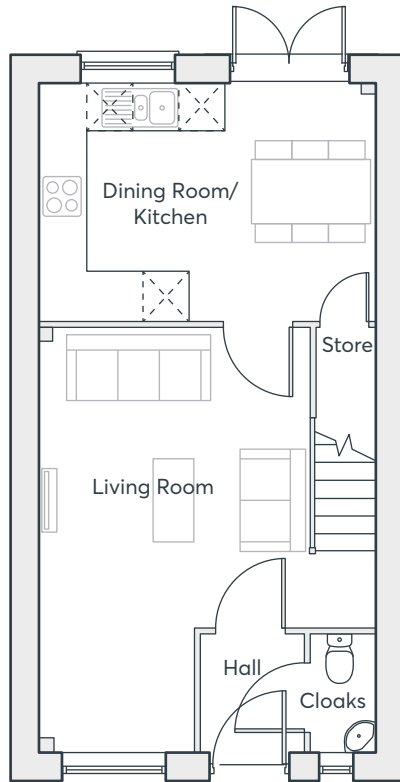
**THREE
BEDROOM
HOME**

838 sqft

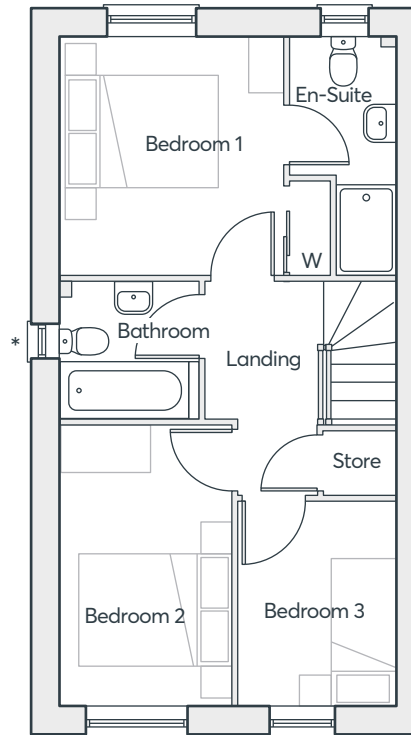
BRAMSHALL MEADOWS 2B
UTTOXETER

 **ST. MODWEN
HOMES**

THE MIRIN



GROUND FLOOR



FIRST FLOOR

*Plot specific windows

**THREE
BEDROOM
HOME**

838 sqft

Dining/Kitchen	4.40m × 3.16m	14'5" × 10'5"
Living Room	4.40m × 5.60m	14'5" × 18'4"
Cloakroom	0.86m × 1.56m	2'10" × 5'2"
Bedroom 1	2.90m × 3.16m	9'6" × 10'5"
En-Suite	1.41m × 3.16m	4'7" × 10'5"
Bedroom 2	2.26m × 3.71m	7'5" × 12'2"
Bedroom 3	2.05m × 2.71m	6'9" × 8'11"
Bathroom	1.84m × 1.80m	6'1" × 5'11"

Computer generated images are indicative only. External finishes, materials, layouts, window positions and styles may vary. Room sizes are taken to the widest point in each room wall to wall and a tolerance of +/- 5% is allowed. The floor plans are for guidance only and may be subject to change and properties may be "handed" or mirror images of the plans shown. Please check with our Sales Consultant or Selling Agent. SMP 63594/October 2022

 **ST.MODWEN
HOMES**

THE LAWRENCE

- Open plan living/dining room with French doors to the rear garden
- Fitted kitchen with built-in oven, hob and extractor hood
- Downstairs cloakroom
- Under stairs store
- Master bedroom with en-suite and built-in wardrobe
- Fully fitted family bathroom
- Full gas fired central heating
- Double glazing and high-performance insulation throughout
- 10 year New Home warranty

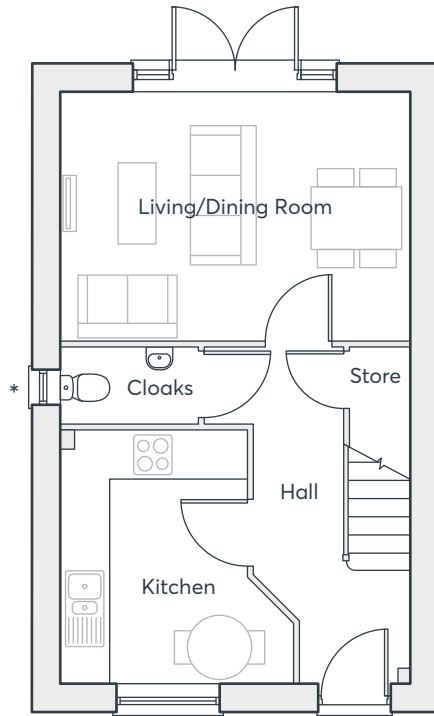
**THREE
BEDROOM
HOME**

790 sqft

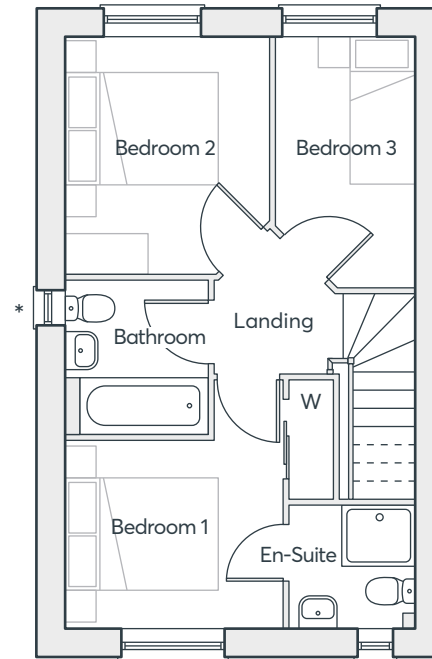
**BRAMSHALL MEADOWS 2B
UTTOXETER**

 **ST.MODWEN
HOMES**

THE LAWRENCE



GROUND FLOOR



FIRST FLOOR

*Plot specific windows

**THREE
BEDROOM
HOME**

790 sqft

Living/Dining	4.68m × 3.30m	15'4" × 10'10"
Kitchen	3.35m × 3.09m	11'0" × 10'2"
Cloakroom	1.84m × 1.00m	6'0" × 3'3"
Bedroom 1	2.89m × 2.50m	9'6" × 8'2"
En-Suite	1.70m × 1.64m	5'7" × 5'5"
Bedroom 2	2.71m × 3.13m	8'11" × 10'3"
Bedroom 3	1.88m × 3.31m	6'2" × 10'10"
Bathroom	1.90m × 2.03m	6'3" × 6'8"

Computer generated images are indicative only. External finishes, materials, layouts, window positions and styles may vary. Room sizes are taken to the widest point in each room wall to wall and a tolerance of +/- 5% is allowed. The floor plans are for guidance only and may be subject to change and properties may be "handed" or mirror images of the plans shown. Please check with our Sales Consultant or Selling Agent. SMP 63594/October 2022

 **ST.MODWEN
HOMES**

THE LOXLEY

- Living room with French doors to the rear garden
- Fitted kitchen with built-in oven, hob and extractor hood
- Downstairs cloakroom
- Under stairs store
- Master bedroom built-in wardrobe
- Fully fitted family bathroom
- Full gas fired central heating
- Double glazing and high-performance insulation throughout
- 10 year New Home warranty

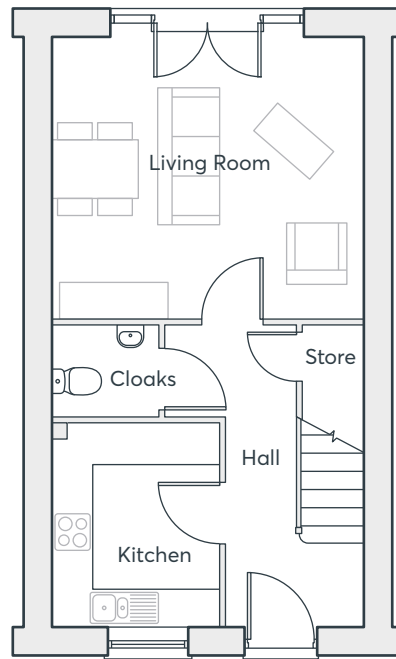
**TWO
BEDROOM
HOME**

759 sqft

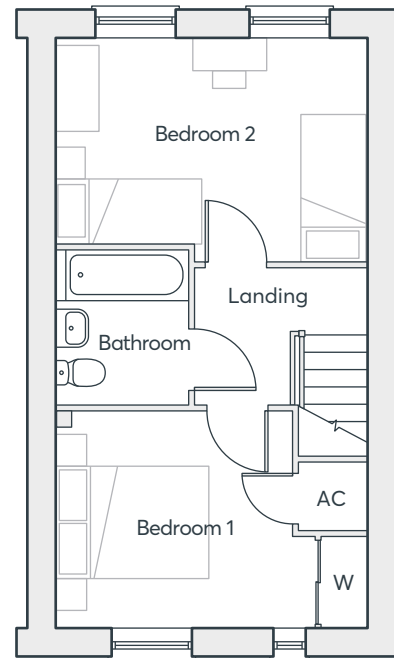
BRAMSHALL MEADOWS 2B
UTTOXETER

 **ST. MODWEN
HOMES**

THE LOXLEY



GROUND FLOOR



FIRST FLOOR

Living Room	4.31m × 3.96m	14'2" × 13'0"
Kitchen	2.32m × 2.87m	7'7" × 9'5"
Bedroom 1	4.31m × 3.03m	14'2" × 9'11"
Bedroom 2	4.31m × 2.92m	14'2" × 9'7"
Bathroom	1.88m × 2.18m	6'2" × 7'2"

Computer generated images are indicative only. External finishes, materials, layouts, window positions and styles may vary. Room sizes are taken to the widest point in each room wall to wall and a tolerance of +/- 5% is allowed. The floor plans are for guidance only and may be subject to change and properties may be "handed" or mirror images of the plans shown. Please check with our Sales Consultant or Selling Agent. SMP 63594/October 2022

**TWO
BEDROOM
HOME**

759 sqft

 **ST.MODWEN
HOMES**



Please speak to a member of the Sales Team if you require this brochure in an alternative format.

St. Modwen Homes, Two Devon Way, Longbridge, Birmingham, B31 2TS
T: 0121 647 1000 E: sales@stmodwenhomes.co.uk

stmodwenhomes.co.uk