



FRAMPTON GATE

FRAMPTON

A COLLECTION OF
2, 3, 4 & 5 BEDROOM HOMES



ALLISON
HOMES



ALL ABOUT FEELING PART OF SOMEWHERE SPECIAL

LIFE BEGINS AT FRAMPTON GATE





A collection of brand-new homes beautifully framed by their natural surroundings of open skies and fields, country lanes and hedgerows.

Frampton Gate is set within a unique Lincolnshire landscape that has evolved naturally and organically over centuries. Offering a choice of two, three, four, and five bedroom homes in a desirable village location at Frampton, and close to the neighbouring villages of Kirton and Wyberton. Each home has been built and finished with Allison Homes' signature craftsmanship and interior specification, with each design carefully tailored for relaxed modern living.

The homes are set within a landscaped streetscape, with green spaces and play areas adding to the tranquil feel. As well as this Frampton Gate is just a ten-minute drive from the thriving market town of Boston, and together with the excellent road connections that offer a wealth of choices for commuters, Frampton Gate is the ideal choice whether you are starting out or looking to discover quality of life for a growing family.



ALL ABOUT ENJOYING AN EXCEPTIONAL QUALITY OF VILLAGE LIVING

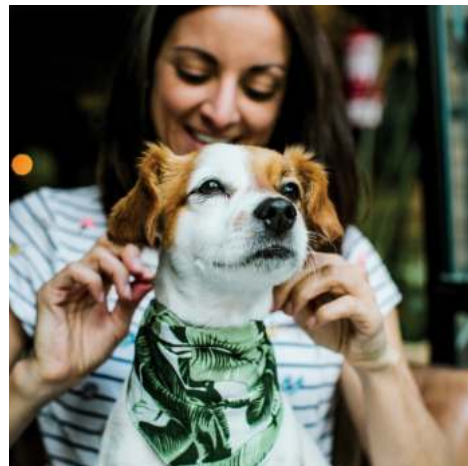
Frampton is part of a beautifully connected tapestry of local villages that together create a close-knit and well-served community.

Frampton, together with Kirton and Wyberton, offer a range of amenities; you will find convenience stores Costcutter and International Food and Drink, together with a Cooperative branch, pharmacy, and medical practice in Kirton. Families will find early years education at Frampton Pre-School, rated 'Good' by Ofsted just an eight-minute walk away, while Kirton Primary School, also rated Good, is one of Lincolnshire's top ten best state schools. Senior level Thomas Middlecott Academy is a mile away, with a selective Grammar School and Sixth Form in Boston.

For leisure, Kirton Youth Club is a hub for activities from football, netball, and basketball to arts and crafts, cooking and karaoke. All ages can enjoy Kirton's Middlecott Sport and Fitness Centre with gym, spin-studio and fitness classes, while Boston's Geoff Moulder Leisure Complex offers everything from a baby pool to family fun on the leisure pool flume. The Graves Park Social Club and Wyberton's Sports and Social Club offer a friendly welcome and calendar of social evenings. Dining out you'll find family – and dog-friendly – local inns, restaurants in characterful old cottages, and places for a takeaway.



KIRTON YOUTH CLUB
0.8 MILES



THE BLACK BULL INN
1.4 MILES



THOMAS MIDDLECOTT ACADEMY
1.7 MILE



GEOFF MOULDER LEISURE CENTRE
4.1 MILES



ALL ABOUT THE OPPORTUNITIES TO ENJOY LIFE TO THE FULL

From towns linked to the Mayflower pilgrims to a world-renowned landscape, Lincolnshire life is distinctive and diverting.

On Wednesday's and Saturday's you can take a stroll through Boston's markets which have been held for hundreds of years and is the largest in Lincolnshire. Discover the medieval streetscapes which reveal eateries, coffee spots and shopping, ranging from Cammack & Sons with its prominent Art Deco style to Pescod Square's Shopping Centre. Stay for the evening and enjoy the Savoy's offering of premium arts entertainment from films to live-screened ballet, opera, and theatre.

The City of Lincoln offers the beautiful Cathedral and Cornhill Quarters, extensive High Street and Waterside Shopping Centre, while the Theatre Royal stages everything from one-man shows to big-scale productions. When it comes to the outdoors, The Wash is an internationally special place for wildlife. Head to RSPB Frampton Marsh, a waterscape of freshwater habitats to unwind watching summer skylarks, March hares and wintering flocks of birds on the tidal creeks, or to Freiston Shore RSPB Reserve where birds gather on the salt water lagoon at high-tide. From Skegness's funfairs and walks along the front, to evocative WW2 airfield visitor centres, or adventures with wolves and wallabies, tigers - and a hundred species of parrot - at the ARK sanctuary and Lincolnshire Wildlife Park, there is always something new to experience.



1. Lincoln Cathedral
2. Boston Market
3. Ballet at the Savoy
4. RSPB Frampton Marsh



“

Unwind together watching the array of wildlife at Frampton March.

SITEPLAN



- THE LILAC**
2 bedroom home
Homes 12, 13, 14, 15, 18, 19,
20, 21, 22, 28, 29, 30 & 31
- THE MAGNOLIA**
2 bedroom home
Home 27
- THE JUNE BERRY**
2 bedroom home
Homes 16 & 32
- THE LABURNUM**
2 bedroom home
Homes 17, 23, 24 & 25
- THE HAWTHORN**
2 bedroom home
Homes 36, 37, 82, 83, 202,
203, 204, 205 & 206
- THE JASMINE**
3 bedroom home
Home 26
- THE APPLE BLOSSOM**
3 bedroom home
Homes 66, 67, 68, 75, 80,
81, 200, 201 & 208
- THE DOGWOOD**
3 bedroom home
Homes 34 & 35
- THE HOLLY SPECIAL**
3 bedroom home
Homes 33, 46, 49, 61, 65,
69, 74, 79, 84, 88 & 207
- THE LAUREL**
3 bedroom home
Homes 11, 42, 43, 44,
45, 48, 71, 76 & 85
- THE WHITE BEAM**
3 bedroom home
Homes 38, 39, 40, 41, 57,
58, 59, 60, 72 & 73
- THE HOLLY**
3 bedroom home
Homes 1, 7, 89, 101, 179 & 184
- THE ROWAN**
4 bedroom home
Homes 53, 54, 55, 56, 64, 77 & 78
- THE HORNBEAM**
4 bedroom home
Homes 8, 9, 10, 47, 50, 51,
52, 62, 63, 70, 86 & 87
- THE WALNUT SPECIAL**
4 bedroom home
Homes 91, 99, 100 & 172
- THE ASPEN**
4 bedroom home
Homes 90, 97, 98 & 171



FRAMPTON GATE

BOSTON

Every care has been taken to ensure the accuracy of these particulars, but the contents shall not form part of any contract and the vendors reserve the right to alter specification and/or delay without notice. The site plan is drawn to show the relative position of individual properties. NOT TO SCALE. This is a two dimensional drawing and will not show land contours and gradients, boundary treatments or local authority street lighting. Landscaping shown is for illustration purposes only and is subject to change. Footpaths subject to change. Purchasers are advised to check with our Sales Executives on the home of their choice. The site details and individual house types are subject to planning variation.

THE LILAC

2 bedroom home
Homes 12, 13, 14, 15, 18, 19,
20, 21, 22, 28, 29, 30 & 31



FRAMPTON GATE

FRAMPTON


ALLISON
HOMES

THE LILAC

2 bedroom home
Homes 12, 13, 14, 15, 18, 19,
20, 21, 22, 28, 29, 30 & 31

GROUND FLOOR

Living Area	3.09m x 2.71m	10'2" x 8'11"
Kitchen/Dining	3.09m x 3.13m	10'2" x 10'3"
Utility	1.69m x 1.91m	5'7" x 6'3"
Bedroom 1	2.91m x 4.06m	9'7" x 13'4"
Bedroom 2	2.63m x 3.30m	8'8" x 10'10"
Bathroom	1.96m x 2.34m	6'5" x 7'8"



GROUND FLOOR

FRAMPTON GATE

FRAMPTON

All images used are for illustrative purpose only. Dimensions given are illustrative for this house type and individual properties may differ. Please check with your Sales Executives in respect of individual properties. We give maximum dimensions within each room and these may include areas of fixtures and fittings including fitted furniture. These dimensions should not be used for carpet or flooring sizes, appliance spaces or items of furniture. All images, photographs and dimensions are not intended to be relied upon for, nor to form part of any contract unless specifically incorporated in writing into the contract.

THE MAGNOLIA

2 bedroom home
Home 27



FRAMPTON GATE

FRAMPTON



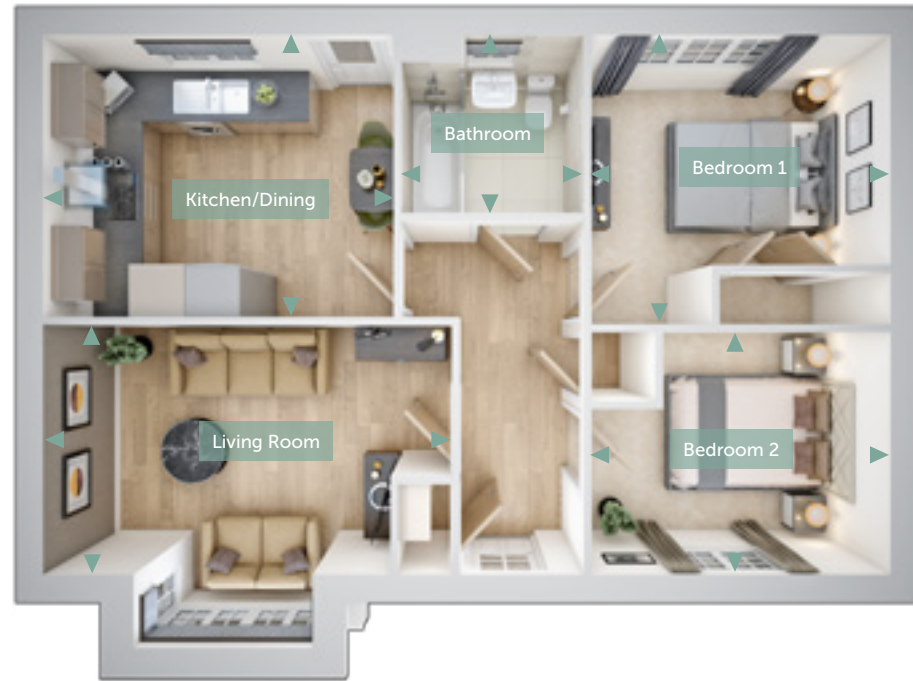
ALLISON
HOMES

THE MAGNOLIA

2 bedroom home
Home 27

GROUND FLOOR

Living Room	4.57m x 2.81m	14'12" x 9'3"
Kitchen/Dining	3.91m x 3.15m	12'10" x 10'4"
Bedroom 1	3.34m x 3.23m	10'11" x 10'7"
Bedroom 2	3.34m x 2.71m	10'11" x 8'11"
Bathroom	2.05m x 1.99m	6'9" x 6'6"



GROUND FLOOR

FRAMPTON GATE

FRAMPTON

All images used are for illustrative purpose only. Dimensions given are illustrative for this house type and individual properties may differ. Please check with your Sales Executives in respect of individual properties. We give maximum dimensions within each room and these may include areas of fixtures and fittings including fitted furniture. These dimensions should not be used for carpet or flooring sizes, appliance spaces or items of furniture. All images, photographs and dimensions are not intended to be relied upon for, nor to form part of any contract unless specifically incorporated in writing into the contract.

THE JUNE BERRY

2 bedroom home
Homes 16 & 32



FRAMPTON GATE

FRAMPTON



THE JUNE BERRY

2 bedroom home
Homes 16 & 32

GROUND FLOOR

Living Room	4.28m x 3.17m	14'1" x 10'5"
Kitchen/Dining	3.59m x 4.28m	11'9" x 14'1"
Bedroom 1	2.98m x 3.49m	9'9" x 11'5"
Bedroom 2	3.09m x 2.73m	10'2" x 8'11"
Bathroom	2.45m x 2.03m	8'0" x 6'8"



GROUND FLOOR

FRAMPTON GATE

FRAMPTON

All images used are for illustrative purpose only. Dimensions given are illustrative for this house type and individual properties may differ. Please check with your Sales Executives in respect of individual properties. We give maximum dimensions within each room and these may include areas of fixtures and fittings including fitted furniture. These dimensions should not be used for carpet or flooring sizes, appliance spaces or items of furniture. All images, photographs and dimensions are not intended to be relied upon for, nor to form part of any contract unless specifically incorporated in writing into the contract.

THE LABURNUM

2 bedroom home
Homes 17, 23, 24 & 25



FRAMPTON GATE

FRAMPTON



ALLISON
HOMES

THE LABURNUM

2 bedroom home
Homes 17, 23, 24 & 25

GROUND FLOOR

Living Room	3.51m x 4.71m	11'6" x 15'5"
Kitchen/Dining	3.48m x 3.76m	11'5" x 12'4"
Utility	1.82m x 2.03m	5'12" x 6'8"
Bedroom 1	3.51m x 3.76m	11'6" x 12'4"
Bedroom 2	3.47m x 3.01m	11'5" x 9'11"
Bathroom	2.25m x 2.59m	7'5" x 8'6"



GROUND FLOOR



ALLISON
HOMES

FRAMPTON GATE

FRAMPTON

All images used are for illustrative purpose only. Dimensions given are illustrative for this house type and individual properties may differ. Please check with your Sales Executives in respect of individual properties. We give maximum dimensions within each room and these may include areas of fixtures and fittings including fitted furniture. These dimensions should not be used for carpet or flooring sizes, appliance spaces or items of furniture. All images, photographs and dimensions are not intended to be relied upon for, nor to form part of any contract unless specifically incorporated in writing into the contract.

THE HAWTHORN

2 bedroom home
Homes 36, 37, 82, 83, 202,
203, 204, 205 & 206



FRAMPTON GATE

FRAMPTON


ALLISON
HOMES

THE HAWTHORN

2 bedroom home

Homes 36, 37, 82, 83, 202,
203, 204, 205 & 206

GROUND FLOOR

Living Room	3.54m x 4.03m	11'7" x 13'3"
Kitchen/Dining	4.55m x 3.00m	14'11" x 9'10"
WC	0.91m x 1.99m	2'12" x 6'6"

FIRST FLOOR

Bedroom 1	3.54m x 3.25m	11'7" x 10'8"
Bedroom 2	2.54m x 3.77m	8'4" x 12'4"
Bathroom	1.93m x 2.12m	6'4" x 6'11"



GROUND FLOOR



FIRST FLOOR

FRAMPTON GATE

FRAMPTON

All images used are for illustrative purpose only. Dimensions given are illustrative for this house type and individual properties may differ. Please check with your Sales Executives in respect of individual properties. We give maximum dimensions within each room and these may include areas of fixtures and fittings including fitted furniture. These dimensions should not be used for carpet or flooring sizes, appliance spaces or items of furniture. All images, photographs and dimensions are not intended to be relied upon for, nor to form part of any contract unless specifically incorporated in writing into the contract.

THE JASMINE

3 bedroom home
Home 26



FRAMPTON GATE
FRAMPTON


ALLISON
HOMES

THE JASMINE

3 bedroom home
Home 26

GROUND FLOOR

Living Room	3.04m x 4.16m	9'12" x 13'8"
Kitchen	3.85m x 3.70m	12'8" x 12'2"
Dining	2.48m x 2.60m	8'2" x 8'6"
Utility	4.07m x 2.10m	13'4" x 6'11"
Bedroom 1	2.97m x 3.17m	9'9" x 10'5"
En Suite	1.54m x 2.03m	5'1" x 6'8"
Bedroom 2	3.32m x 3.04m	10'11" x 9'12"
Bedroom 3	2.59m x 3.04m	8'6" x 9'12"
Bathroom	2.27m x 1.90m	7'5" x 6'3"



GROUND FLOOR



ALLISON
HOMES

FRAMPTON GATE

FRAMPTON

All images used are for illustrative purpose only. Dimensions given are illustrative for this house type and individual properties may differ. Please check with your Sales Executives in respect of individual properties. We give maximum dimensions within each room and these may include areas of fixtures and fittings including fitted furniture. These dimensions should not be used for carpet or flooring sizes, appliance spaces or items of furniture. All images, photographs and dimensions are not intended to be relied upon for, nor to form part of any contract unless specifically incorporated in writing into the contract.

THE APPLE BLOSSOM

3 bedroom home
Homes 66, 67, 68, 75,
80, 81, 200, 201 & 208



FRAMPTON GATE
FRAMPTON


ALLISON
HOMES

THE APPLE BLOSSOM

3 bedroom home
Homes 66, 67, 68, 75,
80, 81, 200, 201 & 208

GROUND FLOOR

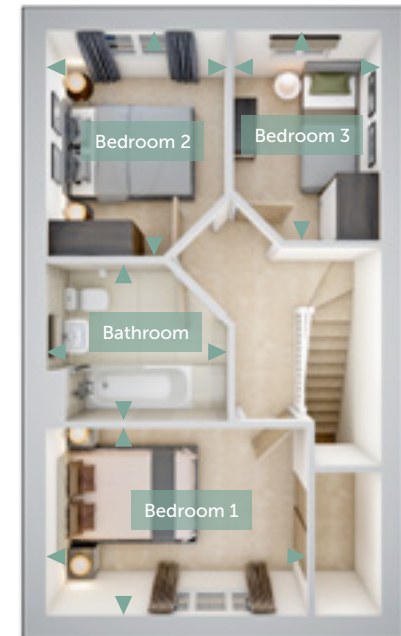
Living/Dining	4.57m x 3.58m	14'12" x 11'9"
Kitchen	2.53m x 3.15m	8'4" x 10'4"
WC	2.53m x 1.06m	8'4" x 3'6"

FIRST FLOOR

Bedroom 1	3.57m x 2.56m	11'9" x 8'5"
Bedroom 2	2.47m x 3.08m	8'1" x 10'1"
Bedroom 3	2.01m x 2.86m	6'7" x 9'5"
Bathroom	2.48m x 2.16m	8'2" x 7'1"



GROUND FLOOR



FIRST FLOOR

FRAMPTON GATE

FRAMPTON

All images used are for illustrative purpose only. Dimensions given are illustrative for this house type and individual properties may differ. Please check with your Sales Executives in respect of individual properties. We give maximum dimensions within each room and these may include areas of fixtures and fittings including fitted furniture. These dimensions should not be used for carpet or flooring sizes, appliance spaces or items of furniture. All images, photographs and dimensions are not intended to be relied upon for, nor to form part of any contract unless specifically incorporated in writing into the contract.

THE DOGWOOD

3 bedroom home
Homes 34 & 35



FRAMPTON GATE

FRAMPTON



THE DOGWOOD

3 bedroom home
Homes 34 & 35

GROUND FLOOR

Living Room	2.96m x 4.96m	9'9" x 16'3"
Kitchen/Dining	2.59m x 4.96m	8'6" x 16'3"
WC	0.99m x 1.86m	3'3" x 6'1"

FIRST FLOOR

Bedroom 1	2.96m x 3.19m	9'9" x 10'6"
En-Suite	2.69m x 1.67m	8'10" x 5'6"
Bedroom 2	2.65m x 2.87m	8'8" x 9'5"
Bedroom 3	3.00m x 1.99m	9'10" x 6'6"
Bathroom	1.99m x 1.96m	6'6" x 6'5"



ALLISON
HOMES



FIRST FLOOR



GROUND FLOOR

FRAMPTON GATE

FRAMPTON

All images used are for illustrative purpose only. Dimensions given are illustrative for this house type and individual properties may differ. Please check with your Sales Executives in respect of individual properties. We give maximum dimensions within each room and these may include areas of fixtures and fittings including fitted furniture. These dimensions should not be used for carpet or flooring sizes, appliance spaces or items of furniture. All images, photographs and dimensions are not intended to be relied upon for, nor to form part of any contract unless specifically incorporated in writing into the contract.

THE HOLLY SPECIAL

3 bedroom home
Homes 33, 46, 49, 61, 65,
69, 74, 79, 84, 88 & 207



FRAMPTON GATE
FRAMPTON


ALLISON
HOMES

THE HOLLY SPECIAL

3 bedroom home
Homes 33, 46, 49, 61, 65,
69, 74, 79, 84, 88 & 207

GROUND FLOOR

Living Room	2.91m x 5.26m	9'7" x 17'3"
Kitchen/Dining	3.22m x 5.26m	10'7" x 17'3"
WC	1.05m x 2.19m	3'5" x 7'2"

FIRST FLOOR

Bedroom 1	3.27m x 3.68m	10'9" x 12'1"
En-Suite	2.27m x 1.49m	7'5" x 4'11"
Bedroom 2	2.94m x 3.02m	9'8" x 9'11"
Bedroom 3	2.94m x 2.15m	9'8" x 7'1"
Bathroom	2.37m x 1.99m	7'9" x 6'6"



GROUND FLOOR



FIRST FLOOR

FRAMPTON GATE

FRAMPTON

All images used are for illustrative purpose only. Dimensions given are illustrative for this house type and individual properties may differ. Please check with your Sales Executives in respect of individual properties. We give maximum dimensions within each room and these may include areas of fixtures and fittings including fitted furniture. These dimensions should not be used for carpet or flooring sizes, appliance spaces or items of furniture. All images, photographs and dimensions are not intended to be relied upon for, nor to form part of any contract unless specifically incorporated in writing into the contract.

THE LAUREL

3 bedroom home
Homes 11, 42, 43, 44,
45, 48, 71, 76 & 85



FRAMPTON GATE

FRAMPTON



ALLISON
HOMES

THE LAUREL

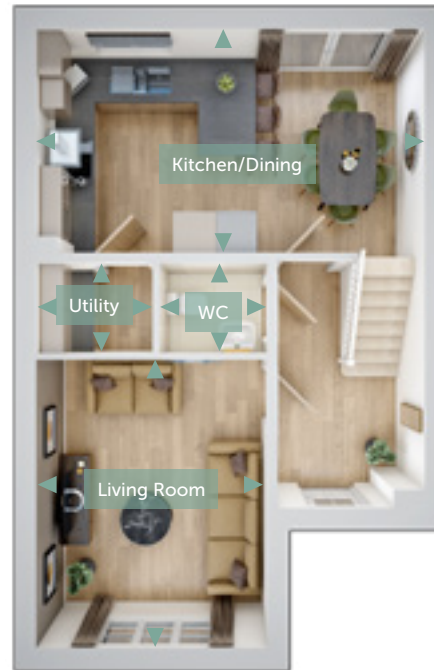
3 bedroom home
Homes 11, 42, 43, 44,
45, 48, 71, 76 & 85

GROUND FLOOR

Living Room	3.30m x 4.11m	10'10" x 13'6"
Kitchen/Dining	5.54m x 3.20m	18'2" x 10'6"
Utility	1.65m x 1.29m	5'5" x 4'3"
WC	1.55m x 1.29m	5'1" x 4'3"

FIRST FLOOR

Bedroom 1	3.30m x 3.55m	10'10" x 11'8"
En-Suite	2.15m x 1.55m	7'1" x 5'1"
Bedroom 2	2.75m x 3.03m	9'0" x 9'11"
Bedroom 3	2.70m x 2.01m	8'10" x 6'7"
Bathroom	2.24m x 2.14m	7'4" x 7'0"



GROUND FLOOR



FIRST FLOOR

FRAMPTON GATE

FRAMPTON

All images used are for illustrative purpose only. Dimensions given are illustrative for this house type and individual properties may differ. Please check with your Sales Executives in respect of individual properties. We give maximum dimensions within each room and these may include areas of fixtures and fittings including fitted furniture. These dimensions should not be used for carpet or flooring sizes, appliance spaces or items of furniture. All images, photographs and dimensions are not intended to be relied upon for, nor to form part of any contract unless specifically incorporated in writing into the contract.

THE WHITE BEAM

3 bedroom home
Homes 38, 39, 40, 41,
57, 58, 59, 60, 72 & 73



FRAMPTON GATE
FRAMPTON


ALLISON
HOMES

THE WHITE BEAM

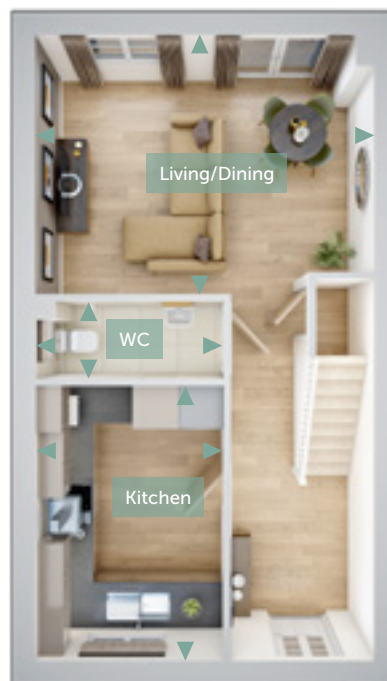
3 bedroom home
Homes 38, 39, 40, 41,
57, 58, 59, 60, 72 & 73

GROUND FLOOR

Living/Dining	4.62m x 3.56m	15'2" x 11'8"
Kitchen	2.57m x 3.75m	8'5" x 12'4"
WC	2.57m x 1.06m	8'5" x 3'6"

FIRST FLOOR

Bedroom 1	3.06m x 2.88m	10'0" x 9'5"
En-Suite	1.46m x 2.28m	4'9" x 7'6"
Bedroom 2	2.51m x 3.31m	8'3" x 10'10"
Bedroom 3	1.99m x 2.24m	6'6" x 7'4"
Bathroom	2.51m x 2.20m	8'3" x 7'3"



GROUND FLOOR



FIRST FLOOR

FRAMPTON GATE

FRAMPTON

All images used are for illustrative purpose only. Dimensions given are illustrative for this house type and individual properties may differ. Please check with your Sales Executives in respect of individual properties. We give maximum dimensions within each room and these may include areas of fixtures and fittings including fitted furniture. These dimensions should not be used for carpet or flooring sizes, appliance spaces or items of furniture. All images, photographs and dimensions are not intended to be relied upon for, nor to form part of any contract unless specifically incorporated in writing into the contract.

THE HOLLY

3 bedroom home

Homes 1, 7, 89, 101, 179 & 184



FRAMPTON GATE

FRAMPTON



ALLISON
HOMES

THE HOLLY

3 bedroom home

Homes 1, 7, 89, 101, 179 & 184

GROUND FLOOR

Living Room	5.64m x 3.70m	18'5" x 12'1"
Kitchen/Dining	5.64m x 3.58m	18'5" x 11'7"
WC	1.96m x 1.01m	6'4" x 3'3"

FIRST FLOOR

Bedroom 1	3.85m x 3.15m	12'6" x 10'3"
En suite	2.00m x 1.67m	6'6" x 5'5"
Bedroom 2	2.62m x 2.61m	8'6" x 8'6"
Bedroom 3	2.73m x 2.10m	9'0" x 6'9"
Bathroom	2.76m x 1.78m	9'1" x 5'8"



GROUND FLOOR



FIRST FLOOR

FRAMPTON GATE

FRAMPTON

All images used are for illustrative purpose only. Dimensions given are illustrative for this house type and individual properties may differ. Please check with your Sales Executives in respect of individual properties. We give maximum dimensions within each room and these may include areas of fixtures and fittings including fitted furniture. These dimensions should not be used for carpet or flooring sizes, appliance spaces or items of furniture. All images, photographs and dimensions are not intended to be relied upon for, nor to form part of any contract unless specifically incorporated in writing into the contract.

THE ROWAN

4 bedroom home

Homes 53, 54, 55, 56, 64, 77 & 78



FRAMPTON GATE

FRAMPTON


ALLISON
HOMES

THE ROWAN

4 bedroom home

Homes 53, 54, 55, 56, 64, 77 & 78

GROUND FLOOR

Living Room	3.16m x 4.93m	10'4" x 16'2"
Kitchen/Dining	5.96m x 4.03m	19'7" x 13'3"
WC	1.06m x 2.00m	3'6" x 6'7"

FIRST FLOOR

Bedroom 1	2.89m x 3.07m	9'6" x 10'1"
En-Suite	2.14m x 1.44m	7'0" x 4'9"
Bedroom 2	2.89m x 2.79m	9'6" x 9'2"
Bedroom 3	2.98m x 1.97m	9'9" x 6'6"
Bedroom 4	2.98m x 2.00m	9'9" x 6'7"
Bathroom	1.95m x 2.10m	6'5" x 6'11"



GROUND FLOOR



FIRST FLOOR



ALLISON
HOMES

FRAMPTON GATE

FRAMPTON

All images used are for illustrative purpose only. Dimensions given are illustrative for this house type and individual properties may differ. Please check with your Sales Executives in respect of individual properties. We give maximum dimensions within each room and these may include areas of fixtures and fittings including fitted furniture. These dimensions should not be used for carpet or flooring sizes, appliance spaces or items of furniture. All images, photographs and dimensions are not intended to be relied upon for, nor to form part of any contract unless specifically incorporated in writing into the contract.

THE HORNBEAM

4 bedroom home
Homes 8, 9, 10, 47, 50, 51,
52, 62, 63, 70, 86 & 87



FRAMPTON GATE
FRAMPTON


ALLISON
HOMES

THE HORNBEAM

4 bedroom home
Homes 8, 9, 10, 47, 50, 51,
52, 62, 63, 70, 86 & 87

GROUND FLOOR

Living/Dining	5.63m x 3.89m	18'6" x 12'9"
Kitchen	3.35m x 4.31m	10'12" x 14'2"
Utility	2.25m x 1.84m	7'5" x 6'0"
WC	1.00m x 1.84m	3'3" x 6'0"

FIRST FLOOR

Bedroom 1	3.35m x 3.61m	10'12" x 11'10"
En Suite	2.30m x 1.50m	7'7" x 4'11"
Bedroom 2	3.34m x 2.85m	10'11" x 9'4"
Bedroom 3	2.19m x 2.85m	7'2" x 9'4"
Bedroom 4	2.19m x 2.83m	7'2" x 9'3"
Bathroom	2.31m x 2.00m	7'7" x 6'7"



GROUND FLOOR



FIRST FLOOR



ALLISON
HOMES

FRAMPTON GATE

FRAMPTON

All images used are for illustrative purpose only. Dimensions given are illustrative for this house type and individual properties may differ. Please check with your Sales Executives in respect of individual properties. We give maximum dimensions within each room and these may include areas of fixtures and fittings including fitted furniture. These dimensions should not be used for carpet or flooring sizes, appliance spaces or items of furniture. All images, photographs and dimensions are not intended to be relied upon for, nor to form part of any contract unless specifically incorporated in writing into the contract.

THE WALNUT SPECIAL

4 bedroom home
Home 91, 99, 100 & 172



FRAMPTON GATE
FRAMPTON


ALLISON
HOMES

THE WALNUT SPECIAL

4 bedroom home
Home 91, 99, 100 & 172

GROUND FLOOR

Lounge	4.99m x 3.77m	6'3" x 12'4"
Dining/Family	5.09m x 3.19m	16'7" x 10'5"
Kitchen	3.40m x 3.37m	11'2" x 11'1"
Utility	2.03m x 1.77m	6'6" x 5'8"
Study	3.35m x 1.89m	10'9" x 6'1"
WC	1.74m x 9.75m	5'7" x 3'2"

FIRST FLOOR

Bedroom 1	3.77m x 3.69m	12'4" x 12'1"
En suite	2.64m x 1.475m	8'7" x 4'8"
Bedroom 2	3.77m x 2.92m	12'4" x 9'6"
Bedroom 3	3.385m x 2.94m	11'1" x 9'7"
Bedroom 4	3.37m x 2.72m	11'1" x 8'9"
Bathroom	2.70m x 1.70m	8'9" x 5'6"



GROUND FLOOR



FIRST FLOOR

FRAMPTON GATE

FRAMPTON



ALLISON
HOMES

All images used are for illustrative purpose only. Dimensions given are illustrative for this house type and individual properties may differ. Please check with your Sales Executives in respect of individual properties. We give maximum dimensions within each room and these may include areas of fixtures and fittings including fitted furniture. These dimensions should not be used for carpet or flooring sizes, appliance spaces or items of furniture. All images, photographs and dimensions are not intended to be relied upon for, nor to form part of any contract unless specifically incorporated in writing into the contract.

THE ASPEN

4 bedroom home
Homes 90, 97, 98 & 171



FRAMPTON GATE
FRAMPTON



THE ASPEN

4 bedroom home
Homes 90, 97, 98 & 171

GROUND FLOOR

Lounge	4.62m x 3.18m	15'1" x 10'4"
Kitchen/Dining	7.77m x 3.03m	9'9" x 5'5"
Utility	1.95m x 1.62m	6'4" x 5'3"
Study	2.55m x 2.51m	8'4" x 8'2"
WC	1.45m x 1.24m	4'8" x 4'1"

FIRST FLOOR

Bedroom 1	4.16m x 3.01m	13'6" x 9'9"
En suite	2.56m x 1.86m	8'4" x 6'1"
Bedroom 2	3.67m x 2.70m	12'0" x 8'9"
Bedroom 3	2.68m x 2.66m	8'8" x 8'7"
Bedroom 4	2.66m x 2.17m	8'7" x 7'1"
Bathroom	2.73m x 1.70m	9'0" x 5'6"



ALLISON
HOMES



GROUND FLOOR



FIRST FLOOR

FRAMPTON GATE

FRAMPTON

All images used are for illustrative purpose only. Dimensions given are illustrative for this house type and individual properties may differ. Please check with your Sales Executives in respect of individual properties. We give maximum dimensions within each room and these may include areas of fixtures and fittings including fitted furniture. These dimensions should not be used for carpet or flooring sizes, appliance spaces or items of furniture. All images, photographs and dimensions are not intended to be relied upon for, nor to form part of any contract unless specifically incorporated in writing into the contract.



ALL ABOUT THE QUALITY

Synonymous with the quality of design and craftsmanship associated with all Allison Homes developments, all the houses at Frampton Gate benefit from a high standard specification.

This includes contemporary kitchens with glass splashbacks and integrated stainless steel electric ovens (single or double according to individual homes), gas hobs and chimney-style extractors.

In all houses, the bathrooms and en suites feature white sanitaryware and heated towel rails, with en suites benefiting from full height tiling to the shower area. To help reduce energy bills, all homes feature an energy efficient boiler and thermostatic radiator valves to all habitable rooms, with white low energy LED to the kitchen, bathroom, en suite and cloakroom (where applicable).





Each home at Frampton Gate has been designed to maximise light and space and, according to plot, comes equipped with a full range of integrated appliances in the kitchen and sleek bathrooms and en suites, ensuring these are homes for contemporary living in every way.



ALL ABOUT MAKING THE CUSTOMER OUR PRIORITY

We aim to make choosing, buying, and moving to your Allison home as stress-free as possible, to deliver exemplary customer service, and keep you fully informed right through your home buying experience.



RESERVING YOUR NEW HOME

After completing a pre-reservation form you sign a reservation agreement. Depending on the stage of construction you can choose to enhance your home from our 'JUST FOR YOU' range.

MEET THE TEAM

An appointment is made to meet your dedicated site manager who can answer questions on progress along the way. We also provide you with a main point of contact within our team.

IT'S ON ITS WAY

You'll receive an estimated completion date as well as regular updates, and while factors like weather can affect the build progress of your new Allison home, we'll always make every effort to meet our deadlines.

GET TO KNOW YOUR HOME INSIDE OUT

Before moving in you'll be invited to attend your new home demonstration. Don't miss this invaluable opportunity to familiarise yourself, from where everything is located to how it works.

OUR COMMITMENT CONTINUES

- After moving in there is a '14 Day Settling In' review where any issues that need sorting out are agreed
- Our dedicated Aftercare service team deal with any warranty aspects for two-years – in an emergency there's a dedicated telephone number in your handover pack
- On the 1st anniversary of owning your home, we make contact with you to ensure that you are enjoying your new home in every way

GOOD TO KNOW...

Your home is covered by a 10-year warranty from the NHBC, just one of the many benefits of a brand-new home.



“

We know we are not just building houses, we are creating the most important spaces in people's lives. A place our customers would be proud to call their home.



ALL ABOUT HOMES BUILT ON SOLID VALUES



The Plum



The Sycamore

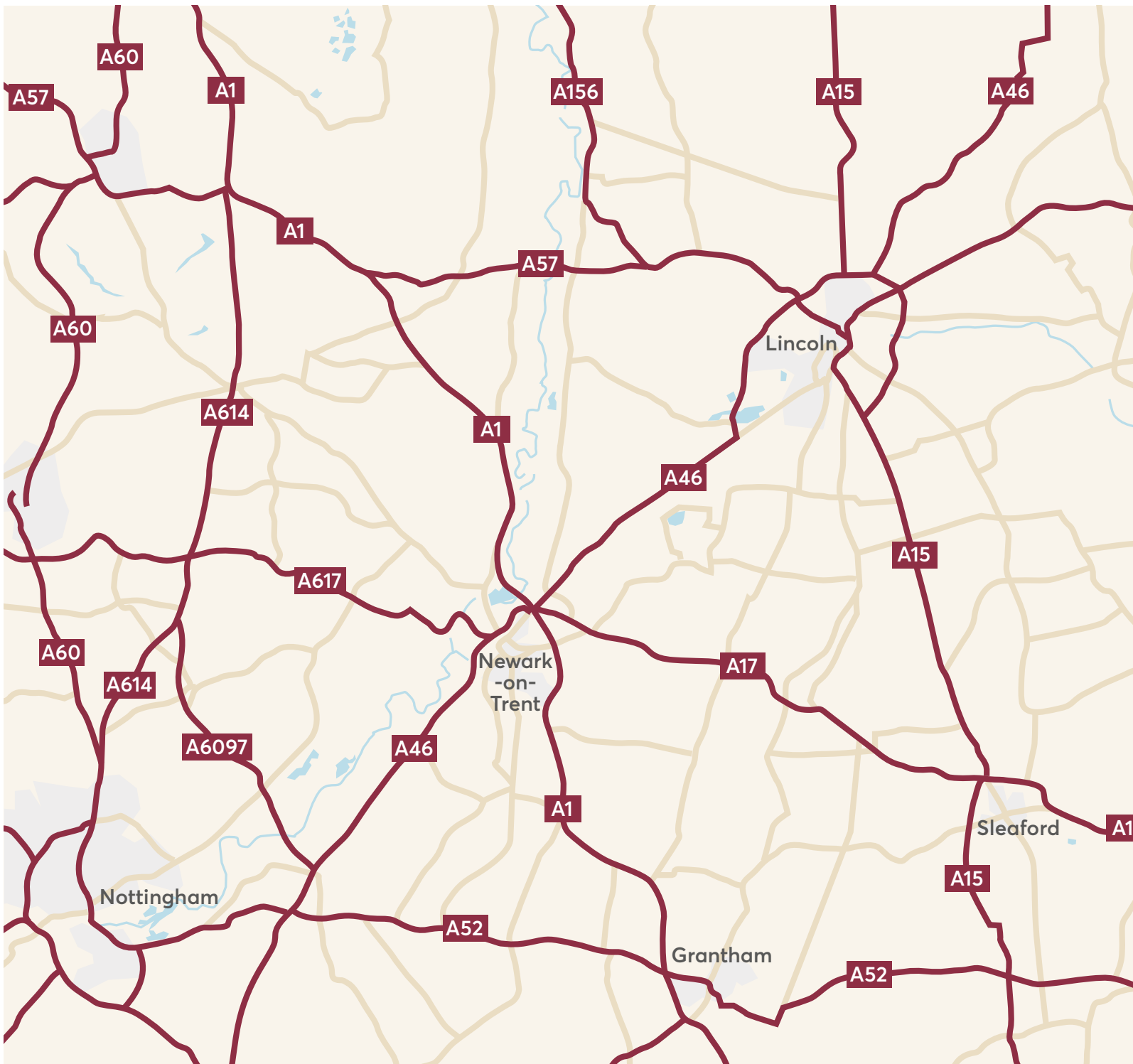
We have never expected more from our home than we do today, from its energy-efficiency and environmental impact, to the different roles it is asked to play in our life. What has remained constant however is the central importance of our home, a place where we re-energise and unwind, increasingly work in - and where families grow. So, at Allison Homes we know we are not just building houses; we are creating the most important spaces in people's lives and the places customers will love to live now and throughout the years ahead.

That's why we ensure an Allison home is something exceptional. Our breadth of experience meets a forward-thinking outlook, and we listen to customer feedback and benefit from the insight and passion for homes of our 200 strong team. Then we design and build the best homes we can for modern, evolving lifestyles. We look at the familiar in a new light too, from redrawing kitchen designs for flexibility to work from home, to transforming underused space like garages for multi-use whether it's for storage, an office or a gym. And we always ensure living areas are a balance between that all-important family space and private space for everyone.

Once you have chosen your home, we understand delivering it on time and to the highest quality matters. Which is why, from site managers to suppliers, we work only with those who share our values of commitment and pride in the job. These relationships with everyone involved in your home are the most important things we build - and the foundations of a home that, inside and out, you can be as proud of as we are.



ALL ABOUT ENVIABLE COMMUTING OPTIONS



Distances represent quickest routes by road. Information from Google Maps. Information correct at time of print.

At Frampton Gate you can enjoy the benefits of exceptionally good transport links.

The A16 is close by - with Peterborough a 48 minute drive - and the A17 linking the East Midlands to East Anglia is a five minute drive at the Sutterton interchange.

Together with the A52 which runs cross-country from Staffordshire to Skegness, at Frampton Gate you are well-placed for travel within the county as well as to city and coast. Boston railway station, with Station Approach car parking, is one of the main stations on the Poacher Line, with direct East Midlands Railway services to Nottingham, Skegness, and to Grantham where East Coast Line services run into London King's Cross in just over an hour.





**ALLISON
HOMES**

Middlegate Road
Frampton
Boston
Lincolnshire
PE20 1BZ

01205 743187

frampton.gate@allison-homes.com

ALLISON-HOMES.CO.UK