

ANWYL  
*thoughtful homes*

welcome to  
Croes Atti  
*Oakenholt*



01352 732 391

*everything considered.*

when it comes to new homes,  
**we think of *everything*.**

There's so much to consider when you're looking for a new home. From the size to the location, the build quality to the price, making the right choice ***really matters***.

**At Anwyl Homes, we know what it's like.** We should do. After all, we've been building high quality new homes for decades, guiding our customers through the process and helping to unlock happy times ahead.

Whether you're looking for a cosy first property, a spacious family base, or you want to downsize now the kids have moved on, there's an Anwyl home that's right for you.

By combining traditional styling and quality workmanship with the best of today's modern features – not to mention personal touches and friendly smiles every step of the way – your Anwyl experience begins the moment you get in touch. Because with every new home we build, you can be sure we're thinking of you.

**Anwyl homes. Everything considered.**

*the opportunity to  
make your home  
your own*



got  
questions?  
call...  
**03300  
244 944**

ANWYL  
*thoughtful homes*



## the caernarfon

4 bed detached with double garage

A large family home. Key features include high ceilings, a double garage, an *open plan* kitchen breakfast room with French doors and separate dining room and study.

got  
questions?

call...

**03300  
244 944**

[www.anwylhomes.co.uk](http://www.anwylhomes.co.uk)

*everything considered.*

ideal for  
modern family living

**ANWYL**  
thoughtful homes

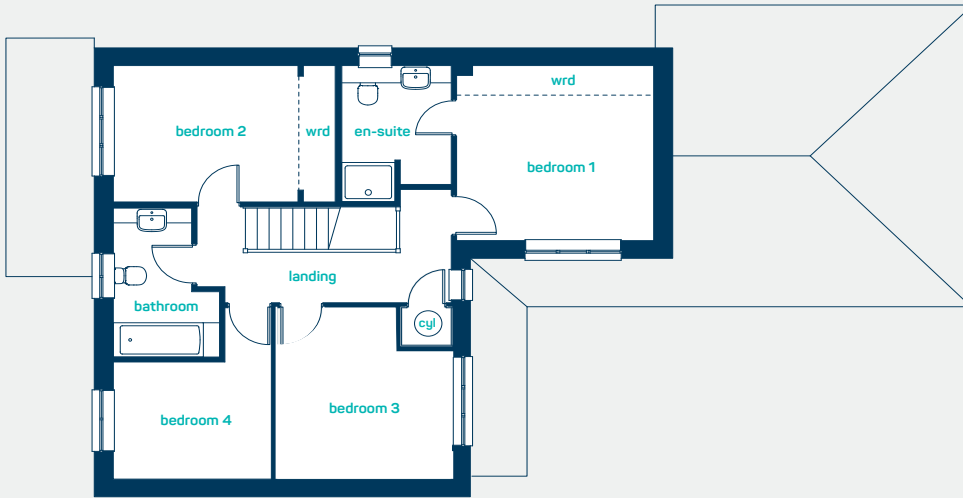


### ground floor

kitchen/breakfast\* 20'2" x 12'4"  
utility 5'8" x 5'7"  
dining room 11'8" x 11'4"  
living room 15'3" x 14'9"  
stud: 9'4" x 7'10"

kitchen/breakfast\* 6.15m x 3.75m  
utility 1.72m x 1.71m  
dining room 3.55m x 3.46m  
living room 4.64m x 4.49m  
study 2.84m x 2.39m

\*into door



### first floor

bedroom 1 12'2" x 11'8"  
en-suite 9'0" x 6'9"  
bedroom 2 13'8" x 9'0"  
bedroom 3 11'5" x 10'9"  
bedroom 4<sub>(into door)</sub> 11'5" x 9'9"  
bathroom 10'0" x 6'3"

bedroom 1 3.71m x 3.55m  
en-suite 2.74m x 2.06m  
bedroom 2 4.18m x 2.74m  
bedroom 3 3.47m x 3.29m  
bedroom 4<sub>(into door)</sub> 3.48m x 2.98m  
bathroom 3.04m x 1.91m

## the caernarfon

4 bed detached with double garage

[www.anwylhomes.co.uk](http://www.anwylhomes.co.uk)

get in  
touch...  
**03300  
244 944**

This is a computer generated image of the caernarfon, elevation treatment may vary. Room sizes are approximate, dimensions are taken from the longest room point (please consult homes advisor for measurement points). Plots may be handed and any garages may be single or double. Kitchen and bathroom layouts are indicative. These plans are correct at the time of going to press, but may be subject to change during construction. Please ensure that you check for specific plot details.  
20/01/2020

everything considered.

ANWYL  
*thoughtful homes*



## the elwy

2 bed semi-detached

A delightful semi-detached home, perfect for first-time buyers. Key features include *spacious bedrooms* and a large living room.

[www.anwylhomes.co.uk](http://www.anwylhomes.co.uk)

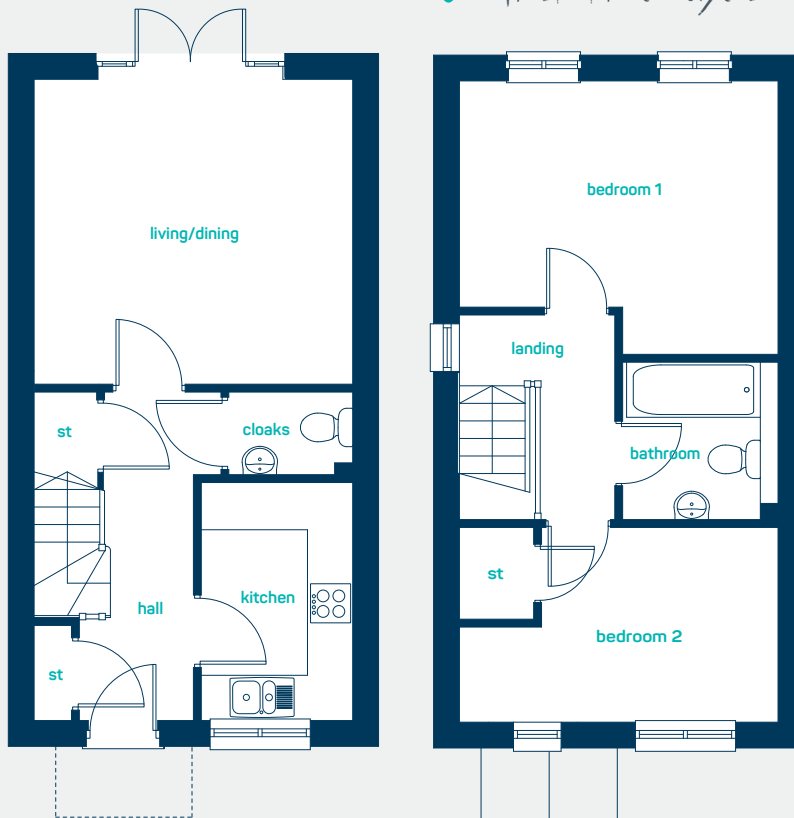
got  
questions?

call...

**03300  
244 944**

*everything considered.*

 perfect for  
*first-time buyers*



### ground floor

kitchen 9' 11" x 6' 4"  
living/dining 13' 4" x 12' 9"  
cloaks 5' 2" x 3' 5"

kitchen 3.03m x 1.93m  
living/dining 4.05m x 3.88m  
cloaks 1.58m x 1.05m

### first floor

bedroom 1 13' 4" x 11' 5"  
bedroom 2 13' 4" x 8' 1"  
bathroom 6' 7" x 6' 6"

bedroom 1 4.05m x 3.48m  
bedroom 2 4.05m x 2.48m  
bathroom 2.00m x 1.99m

## the elwy

2 bed semi-detached

[www.anwylhomes.co.uk](http://www.anwylhomes.co.uk)

This is a computer generated image of the elwy, elevation treatment may vary. Room sizes are approximate, dimensions are taken from the longest room point (please consult homes advisor for measurement points). Plots may be handed and any garages may be single or double. Kitchen and bathroom layouts are indicative. These plans are correct at the time of going to press, but may be subject to change during construction. Please ensure that you check for specific plot details.  
21/05/19

get in  
touch...  
**03300  
244 944**

*everything considered.*

ANWYL  
thoughtful homes

the  
chirk

## the chirk

3 bed semi-detached

A 3 bed semi-detached home, *ideal for* first time buyers. Key features include a separate living room, master bedroom with en-suite and open plan kitchen diner

[www.anwylhomes.co.uk](http://www.anwylhomes.co.uk)

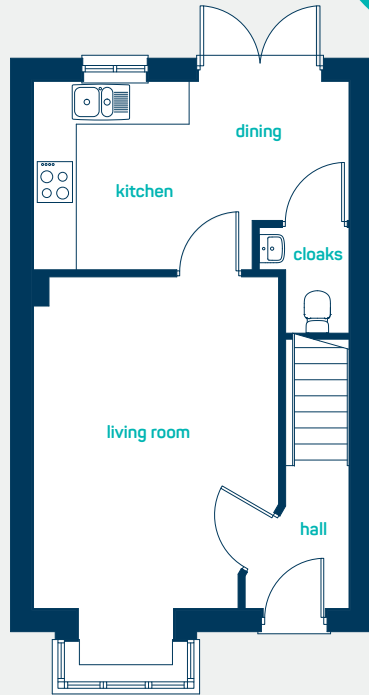
got  
questions?

call...

**03300  
244 944**

*everything considered.*

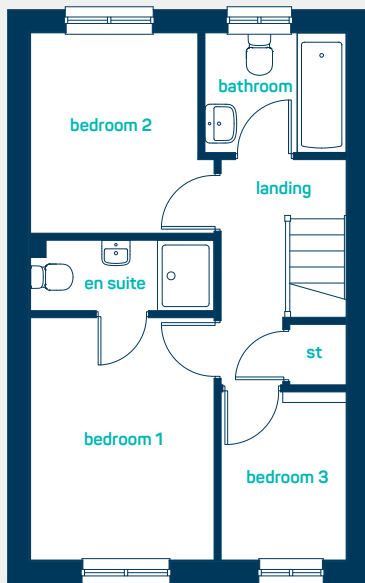
ideal for  
first time buyers



## ground floor

living room (inc bay) 18'1" x 11'5"  
kitchen/dining 14'8" x 8'9"  
cloaks 4'11" x 4'2"

living room (inc bay) 5.52m x 3.48m  
kitchen/dining 4.48m x 2.67m  
cloaks 1.50m x 1.27m



## first floor

bedroom 1 11'4" x 8'7"  
en-suite 8'6" x 3'3"  
bedroom 2 9'4" x 7'10"  
bedroom 3 7'10" x 5'10"  
bathroom 6'7" x 5'7"

bedroom 1 3.44m x 2.61m  
en-suite 2.60m x 1.00m  
bedroom 2 2.84m x 2.38m  
bedroom 3 2.39m x 1.78m  
bathroom 2.01m x 1.70m

## the chirk

3 bed semi-detached

[www.anwylhomes.co.uk](http://www.anwylhomes.co.uk)

This is a computer generated image of the chirk, elevation treatment may vary. Room sizes are approximate, dimensions are taken from the longest room point (please consult homes advisor for measurement points). Plots may be handed and any garages may be single or double. Kitchen and bathroom layouts are indicative. These plans are correct at the time of going to press, but may be subject to change during construction. Please ensure that you check for specific plot details.  
21/05/19

get in  
touch...  
**03300  
244 944**

everything considered.



ANWYL  
*thoughtful homes*



the  
penley

## the penley

3 bed semi-detached

A 3 bed semi-detached home, *ideal for* first time buyers. Key features include a separate living room, master bedroom with en-suite and open plan kitchen diner.

[www.anwylhomes.co.uk](http://www.anwylhomes.co.uk)

got  
questions?

call...  
**03300  
244 944**

*everything considered.*

ideal for  
first time buyers



### ground floor

living room 18' 1" x 11' 9"  
kitchen/dining 14' 8" x 8' 9"  
cloaks 4' 8" x 4' 2"

living room 5.52m x 3.58m  
kitchen/dining 4.48m x 2.67m  
cloaks 1.41m x 1.27m

### first floor

bedroom 1 13' 11" x 8' 7"  
en-suite 8' 6" x 3' 3"  
bedroom 2 9' 4" x 8' 6"  
bedroom 3 7' 10" x 5' 10"  
bathroom 6' 7" x 5' 8"

bedroom 1 4.22m x 2.61m  
en-suite 2.59m x 1.00m  
bedroom 2 2.84m x 2.60m  
bedroom 3 2.38m x 1.78m  
bathroom 2.02m x 1.69m

## the penley

3 bed semi-detached

[www.anwyllhomes.co.uk](http://www.anwyllhomes.co.uk)

This is a computer generated image of the penley, elevation treatment may vary. Room sizes are approximate, dimensions are taken from the longest room point (please consult homes advisor for measurement points). Plots may be handed and any garages may be single or double. Kitchen and bathroom layouts are indicative. These plans are correct at the time of going to press, but may be subject to change during construction. Please ensure that you check for specific plot details.  
22/05/19

get in  
touch...  
**03300  
244 944**

everything considered.

ANWYL  
*thoughtful homes*



## the powys

3 bed semi detached

A 3 bedroom semi-detached home. Perfect as a family starter home or for *first-time buyers*. Key features include an open plan living/dining room with glazed area.

[www.anwylhomes.co.uk](http://www.anwylhomes.co.uk)

got  
questions?

call...

**03300  
244 944**

*everything considered.*

 ideal for  
*first-time buyers*



### ground floor

living/dining 20'2" x 14' 7"  
kitchen 12'2" x 7' 6"  
cloaks 5'10" x 2' 11"

living/dining 6.14m x 4.45m  
kitchen 3.70m x 2.28m  
cloaks 1.77m x 0.90m

### first floor

bedroom 1 14'7" x 9' 2"  
bedroom 2 11'0" x 7' 10"  
bedroom 3 7'8" x 6' 6"  
bathroom 7'0" x 6' 3"

bedroom 1 4.45m x 2.80m  
bedroom 2 3.35m x 2.38m  
bedroom 3 2.33m x 1.98m  
bathroom 2.13m x 1.90m

## the powys

3 bed semi detached

[www.anwyllhomes.co.uk](http://www.anwyllhomes.co.uk)

This is a computer generated image of the powys, elevation treatment may vary. Room sizes are approximate, dimensions are taken from the longest room point (please consult homes advisor for measurement points). Plots may be handed and any garages may be single or double. Kitchen and bathroom layouts are indicative. These plans are correct at the time of going to press, but may be subject to change during construction. Please ensure that you check for specific plot details.

04/19

get in  
touch...  
**03300  
244 944**

*everything considered.*

ANWYL  
*thoughtful homes*

the  
overton

## the overton

3 bed semi-detached

A 3 bed semi-detached home, *ideal for* first time buyers. Key features include a separate living room, master bedroom with en-suite and open plan kitchen diner.

[www.anwylhomes.co.uk](http://www.anwylhomes.co.uk)

got  
questions?

call...

**03300  
244 944**

*everything considered.*

ideal for  
first time buyers



**ground floor**

living room 15' 6" x 11' 9"  
kitchen/dining 14' 8" x 11' 4"  
cloaks 4' 8" x 4' 2"

living room 4.72m x 3.58m  
kitchen/dining 4.48m x 3.46m  
cloaks 1.41m x 1.28m

**first floor**

bedroom 1 13' 4" x 8' 7"  
en-suite 8' 6" x 3' 3"  
bedroom 2 9' 10" x 7' 9"  
bedroom 3 7' 10" x 5' 10"  
bathroom 6' 7" x 5' 11"

bedroom 1 4.07m x 2.61m  
en-suite 2.60m x 1.00m  
bedroom 2 3.00m x 2.37m  
bedroom 3 2.39m x 1.78m  
bathroom 2.01m x 1.80m

get in  
touch...  
**03300  
244 944**

**the overton**  
3 bed semi-detached

[www.anwylhomes.co.uk](http://www.anwylhomes.co.uk)

This is a computer generated image of the overton, elevation treatment may vary. Room sizes are approximate, dimensions are taken from the longest room point (please consult homes advisor for measurement points). Plots may be handed and any garages may be single or double. Kitchen and bathroom layouts are indicative. These plans are correct at the time of going to press, but may be subject to change during construction. Please ensure that you check for specific plot details.  
21/05/19

everything considered.

ANWYL  
*thoughtful homes*



**the hope** <sup>A</sup>  
3 bed detached

A three bed detached house *ideal for* a growing family. Key features include a glazed kitchen family room, large master bedroom with mirrored sliding wardrobes and a separate lounge.

[www.anwylhomes.co.uk](http://www.anwylhomes.co.uk)  
.....

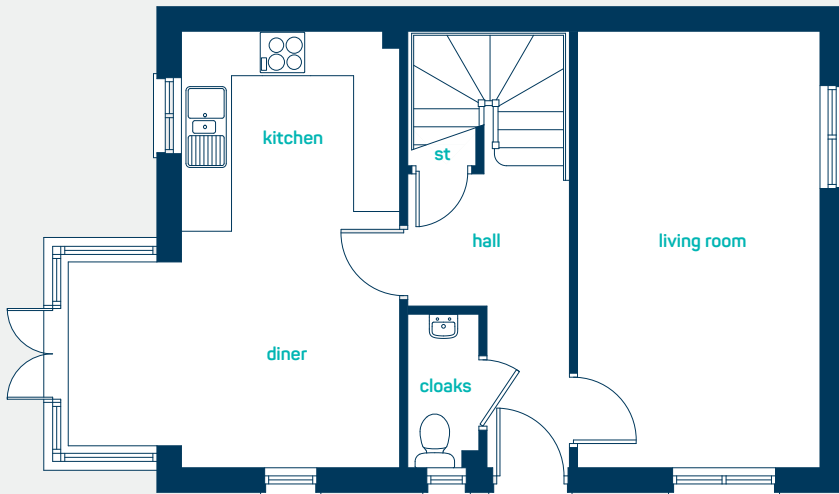
got  
questions?

call...

**03300  
244 944**

*everything considered.*

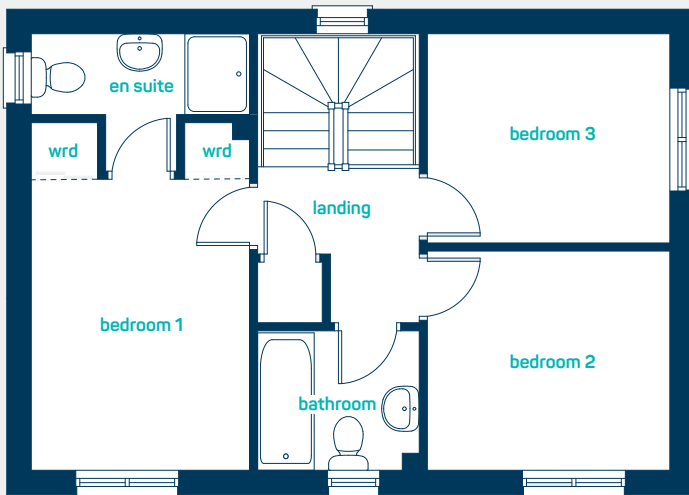
ideal for  
a growing family



**ground floor**

kitchen/diner 13' 5" x 8' 8"  
living room 17' 6" x 9' 8"  
cloaks 6' 2" x 2' 11"

kitchen/dining 4.08m x 2.91m  
living room 5.33m x 2.95m  
cloaks 1.87m x 0.90m



**first floor**

bedroom 1 14' 0" x 8' 10"  
en-suite 8' 10" x 3' 2"  
bathroom 6' 5" x 5' 7"  
bedroom 2 9' 10" x 8' 9"  
bedroom 3 9' 10" x 8' 5"

bedroom 1 4.28m x 2.70m  
en-suite 2.70m x 0.97m  
bathroom 1.95m x 1.70m  
bedroom 2 3.00m x 2.68m  
bedroom 3 3.00m x 2.56m

get in  
touch...  
**03300  
244 944**

**the hope** <sup>A</sup>  
3 bed detached

[www.anwylhomes.co.uk](http://www.anwylhomes.co.uk)

This is a computer generated image of the hope A, elevation treatment may vary. Room sizes are approximate, dimensions are taken from the longest room point (please consult homes advisor for measurement points). Plots may be handed and any garages may be single or double. Kitchen and bathroom layouts are indicative. These plans are correct at the time of going to press, but may be subject to change during construction. Please ensure that you check for specific plot details.

04/19

everything considered.



ANWYL  
*thoughtful homes*



## the chester

3 bed detached

An attractive home, perfect for first-time buyers. Key features include an *open plan* kitchen diner and master bedroom with en-suite.

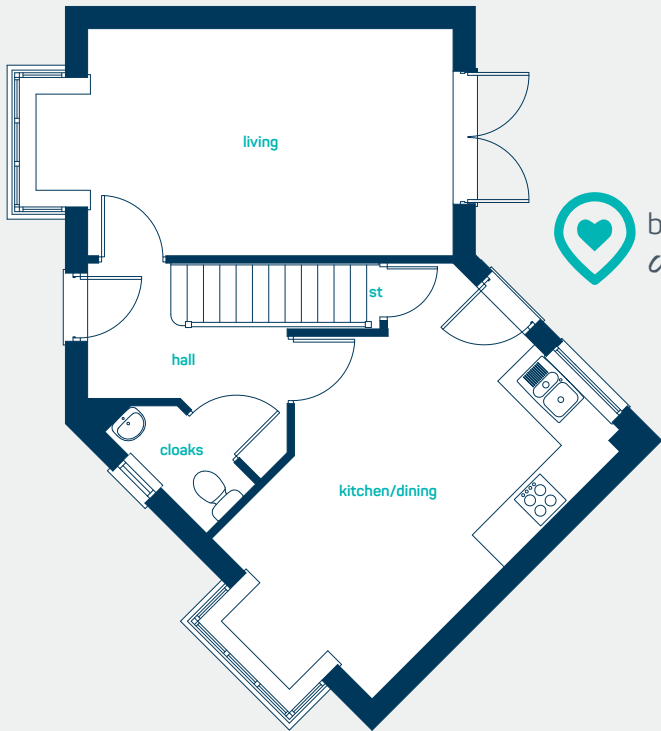
[www.anwyllhomes.co.uk](http://www.anwyllhomes.co.uk)

got  
questions?

call...

**03300  
244 944**

*everything considered.*

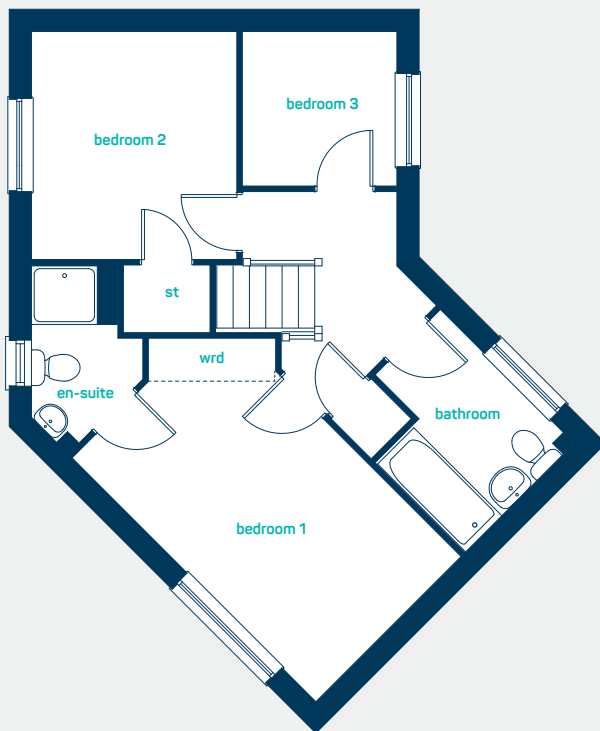


beautiful  
open plan living

### ground floor

kitchen/dining (inc bay) 18'10" x 10'0"  
living room (inc bay) 18'10" x 10'0"  
cloaks 6'1" x 3'0"

kitchen/dining (inc bay) 5.75m x 3.05m  
living room (inc bay) 5.75m x 3.05m  
cloaks 1.86m x 0.93m



### first floor

bedroom 1 15'4" x 9'1"  
en-suite 7'10" x 4'10"  
bedroom 2 10'2" x 9'1"  
bedroom 3 6'10" x 6'10"  
bathroom 8'4" x 6'10"

bedroom 1 4.68m x 2.77m  
en-suite 2.39m x 1.49m  
bedroom 2 3.10m x 2.77m  
bedroom 3 2.08m x 2.08m  
bathroom 2.55m x 2.08m

get in  
touch...  
**03300  
244 944**

## the chester

3 bed detached

[www.anwylhomes.co.uk](http://www.anwylhomes.co.uk)

This is a computer generated image of the chester, elevation treatment may vary. Room sizes are approximate, dimensions are taken from the longest room point (please consult homes advisor for measurement points). Plots may be handed and any garages may be single or double. Kitchen and bathroom layouts are indicative. These plans are correct at the time of going to press, but may be subject to change during construction. Please ensure that you check for specific plot details.  
21/05/2019

everything considered.

ANWYL  
*thoughtful homes*



**the clwyd**  
3 bed semi-detached

A *perfect* starter home for first-time buyers, includes 3 bedrooms and an open plan kitchen diner and master bedroom with en-suite.

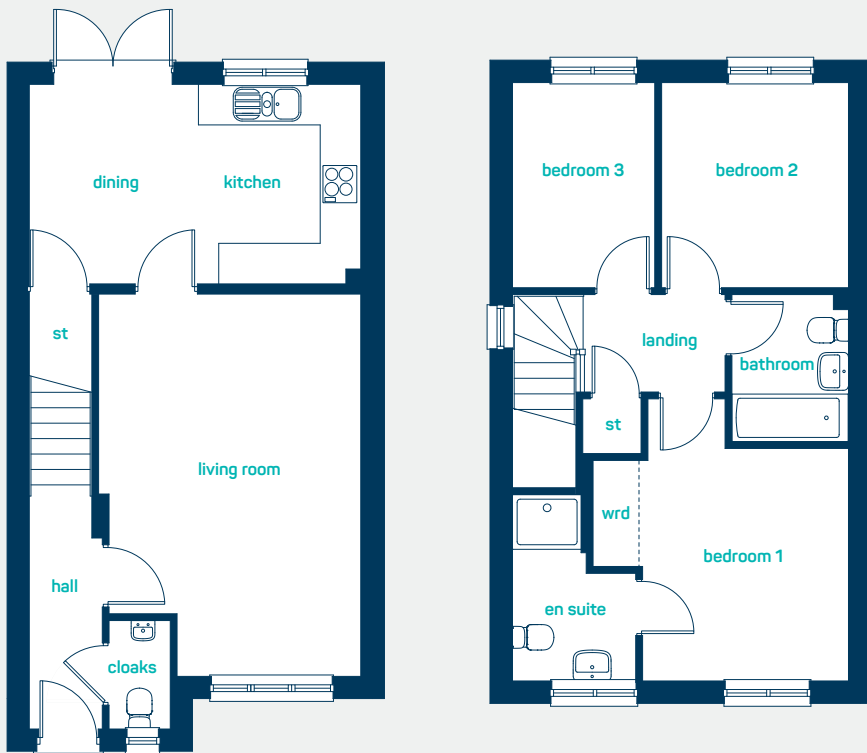
[www.anwylhomes.co.uk](http://www.anwylhomes.co.uk)

got  
questions?

call...  
**03300  
244 944**

*everything considered.*

ideal for  
first-time buyers



## ground floor

kitchen/dining 16' 1" x 9' 8"  
living room 18' 7" x 12' 9"  
cloaks 5' 3" x 3' 0"

kitchen/dining 4.90m x 2.95m  
living room 5.65m x 3.88m  
cloaks 1.60m x 0.91m

## first floor

bedroom 1 12' 3" x 11' 2"  
bedroom 2 9' 10" x 8' 11"  
bedroom 3 9' 10" x 6' 10"  
bathroom 7' 0" x 5' 7"  
en-suite 8' 11" x 5' 11"

bedroom 1 3.73m x 3.40m  
bedroom 2 3.00m x 2.73m  
bedroom 3 3.00m x 2.08m  
bathroom 2.15m x 1.70m  
en-suite 2.73m x 1.80m

get in  
touch...  
**03300  
244 944**

**the clwyd**  
3 bed semi-detached

[www.anwylhomes.co.uk](http://www.anwylhomes.co.uk)

This is a computer generated image of the clwyd, elevation treatment may vary. Room sizes are approximate, dimensions are taken from the longest room point (please consult homes advisor for measurement points). Plots may be handed and any garages may be single or double. Kitchen and bathroom layouts are indicative. These plans are correct at the time of going to press, but may be subject to change during construction. Please ensure that you check for specific plot details.  
21/05/19

everything considered.

ANWYL  
thoughtful homes



## the porthmadog

3 bed detached with garage

A modern home, perfect for buyers looking for more space. Key features include 3 large bedrooms and an open plan kitchen diner.

[www.anwylhomes.co.uk](http://www.anwylhomes.co.uk)

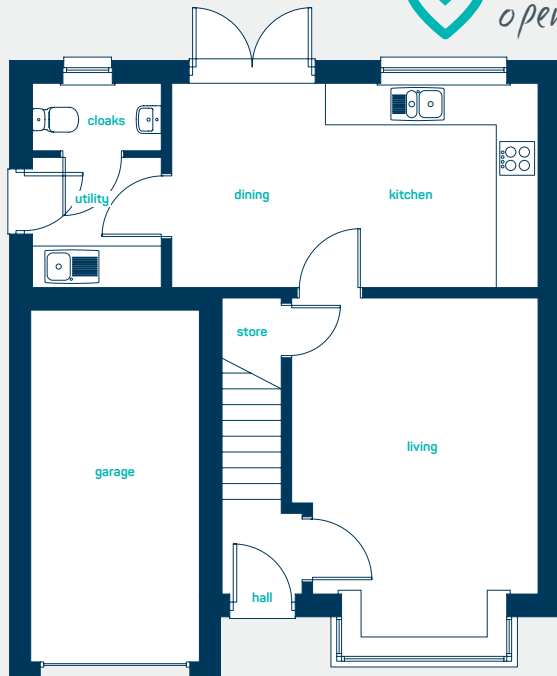
got  
questions?

call...

**03300  
244 944**

*everything considered.*

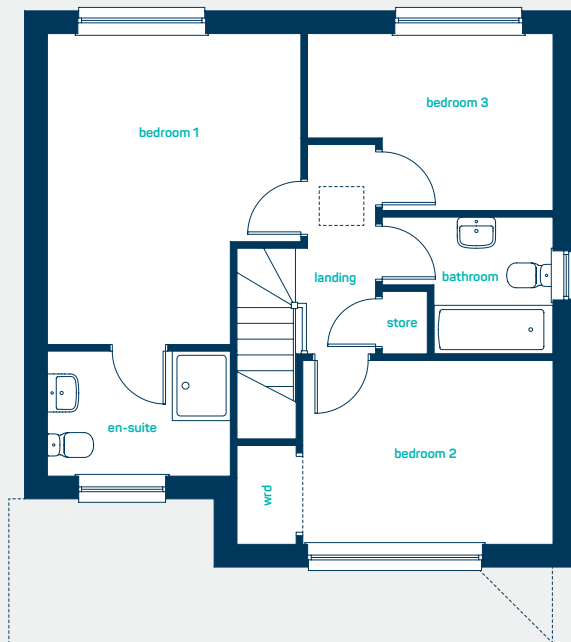
beautiful  
open plan living



## ground floor

living room (inc bay) 16' 3" x 11' 7"  
kitchen/dining 17' 3" x 9' 9"  
utility 6' 2" x 6' 1"  
cloaks 6' 1" x 3' 2"

living room (inc bay) 4.95m x 3.54m  
kitchen/dining 5.26m x 2.98m  
utility 1.87m x 1.85m  
cloaks 1.85m x 0.97m



## first floor

bedroom 1 14' 9" x 11' 11"  
bedroom 2 14' 11" x 8' 9"  
bedroom 3 11' 7" x 8' 5"  
bathroom 8' 1" x 6' 6"  
en-suite 8' 7" x 5' 11"

bedroom 1 4.49m x 3.63m  
bedroom 2 4.54m x 2.66m  
bedroom 3 3.53m x 2.56m  
bathroom 2.45m x 1.98m  
en-suite 2.63m x 1.81m

get in  
touch...  
**03300  
244 944**

## the porthmadog

3 bed detached with garage

[www.anwylhomes.co.uk](http://www.anwylhomes.co.uk)

*This is a computer generated image of the porthmadog, elevation treatment may vary. Room sizes are approximate, dimensions are taken from the longest room point (please consult homes advisor for measurement points). Plots may be handed and any garages may be single or double. Kitchen and bathroom layouts are indicative. These plans are correct at the time of going to press, but may be subject to change during construction. Please ensure that you check for specific plot details.*  
29/04/2020

everything considered.

ANWYL  
*thoughtful homes*



**the tenby**  
3 bed detached

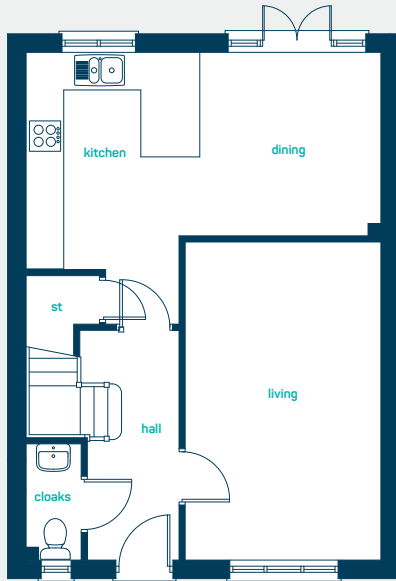
Perfect as a family starter home or for first-time buyers. Key features include 3 double bedrooms and *open plan* kitchen family room.

[www.anwylhomes.co.uk](http://www.anwylhomes.co.uk)  
.....

got  
questions?

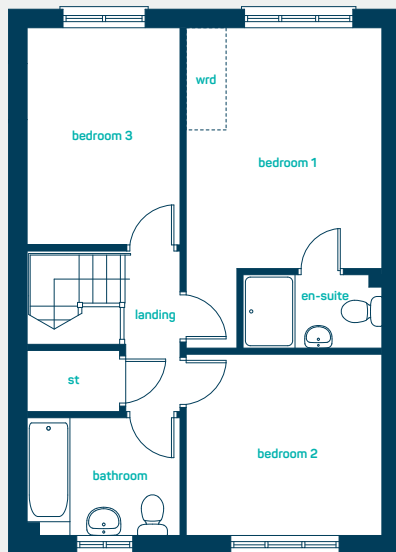
call...  
**03300  
244 944**

*everything considered.*



### ground floor

kitchen/dining	18'10" x 11'6"
living room	16'10" x 10'4"
cloak	6'2" x 3'0"
kitchen/dining	5.75m x 3.50m
living room	5.15m x 3.15m
cloak	1.88m x 0.93m



### first floor

bedroom 1 <sup>*(into door)</sup>	12'10" x 10'5"
en-suite	7'4" x 3'11"
bedroom 2	10'4" x 9'7"
bedroom 3	11'7" x 8'1"
bathroom	8'1" x 6'2"
bedroom 1 <sup>*(into door)</sup>	5.21m x 3.17m
en-suite	2.24m x 1.20m
bedroom 2	3.17m x 2.93m
bedroom 3	3.55m x 2.47m
bathroom	2.47m x 1.90m

get in touch...  
**03300 244 944**

## the tenby

3 bed detached

[www.anwylhomes.co.uk](http://www.anwylhomes.co.uk)

This is a computer generated image of the tenby, elevation treatment may vary. Room sizes are approximate, dimensions are taken from the longest room point (please consult homes advisor for measurement points). Plots may be handed and any garages may be single or double. Kitchen and bathroom layouts are indicative. These plans are correct at the time of going to press, but may be subject to change during construction. Please ensure that you check for specific plot details.  
 28/10/2020

everything considered.



ANWYL  
*thoughtful homes*



## the talley

4 bed semi detached

A 2.5 storey 4 bedroom semi detached home. Key features include separate kitchen, *spacious* living area with feature glazed bay to the rear. 3 double bedrooms including a master bedroom with en-suite and separate family bathroom.

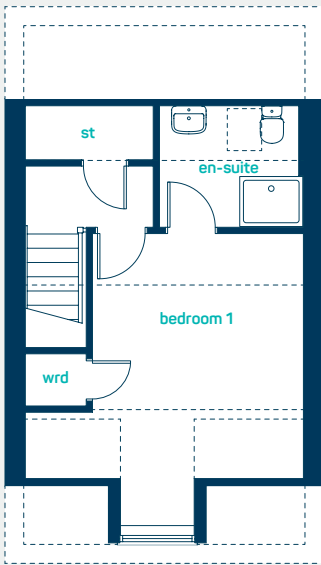
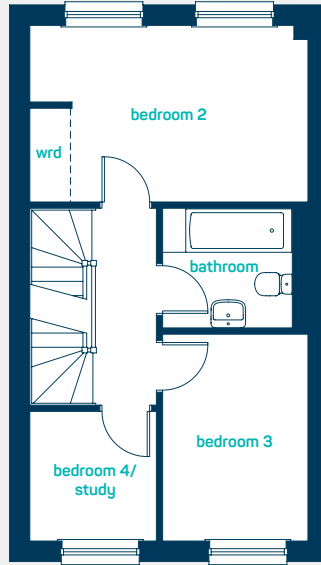
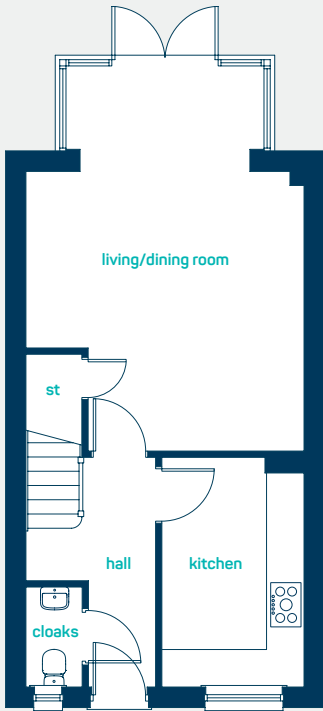
[www.anwylhomes.co.uk](http://www.anwylhomes.co.uk)

got  
questions?

call...

**03300  
244 944**

*everything considered.*



### ground floor

kitchen 12'1" x 7'6"  
 cloaks 5'3" x 2'11"  
 living/dining (inc bay) 20'3" x 14'7"

kitchen 3.68m x 2.28m  
 cloaks 1.60m x 0.90m  
 living/dining (inc bay) 6.16m x 4.45m

### first floor

bedroom 2 14'7" x 9'3"  
 bedroom 3 10'10" x 7'8"  
 bedroom 4 6'10" x 6'8"  
 bathroom 6'10" x 6'3"

bedroom 2 4.45m x 2.83m  
 bedroom 3 3.31m x 2.33m  
 bedroom 4 2.07m x 2.03m  
 bathroom 2.08m x 1.92m

### second floor

bedroom 1 (inc dorma) 15'4" x 14'7"  
 en-suite 7'7" x 6'5"

bedroom 1 (inc dorma) 4.67m x 4.45m  
 en-suite 2.30m x 1.95m

get in touch...  
**03300 244 944**

everything considered.

## the talley

4 bed semi detached

[www.anwylhomes.co.uk](http://www.anwylhomes.co.uk)

This is a computer generated image of the talley, elevation treatment may vary. Room sizes are approximate, dimensions are taken from the longest room point (please consult homes advisor for measurement points). Plots may be handed and any garages may be single or double. Kitchen and bathroom layouts are indicative. These plans are correct at the time of going to press, but may be subject to change during construction. Please ensure that you check for specific plot details . 04/2019

ANWYL  
thoughtful homes



## the abersoch

4 bed detached with garage

A *spacious* 4 bedroom detached home, ideal for families. Key features include a single garage, *open plan* kitchen diner and an en-suite master bedroom.

[www.anwylhomes.co.uk](http://www.anwylhomes.co.uk)

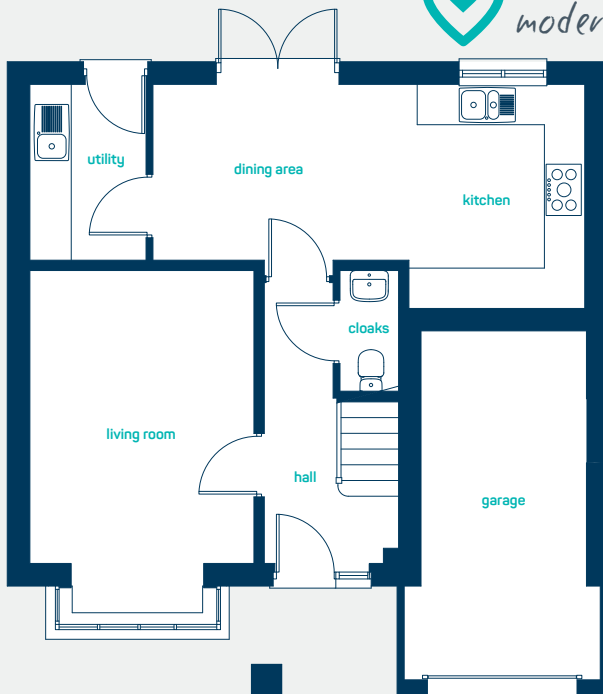
got  
questions?

call...

**03300  
244 944**

*everything considered.*

ideal for  
modern living



### ground floor

living room 16'7" x 10'8"  
kitchen/dining 20'7" x 10'8"  
utility 8'4" x 5'6"

living room 4.98m x 3.25m  
kitchen/dining 6.26m x 3.25m  
utility 2.55m x 1.68m



### first floor

bedroom 1 13'6" x 10'7"  
en-suite 8'6" x 4'11"  
bedroom 2 12'6" x 8'4"  
bedroom 3 10'0" x 7'7"  
bedroom 4 7'7" x 6'11"  
bathroom 8'9" x 8'0"

bedroom 1 4.12m x 3.22m  
en-suite 2.60m x 1.50m  
bedroom 2 3.80m x 2.50m  
bedroom 3 3.05m x 2.32m  
bedroom 4 2.30m x 2.11m  
bathroom 2.67m x 2.44m

## the abersoch

4 bed detached with garage

[www.anwylhomes.co.uk](http://www.anwylhomes.co.uk)

This is a computer generated image of the abersoch, elevation treatment may vary. Room sizes are approximate, dimensions are taken from the longest room point (please consult homes advisor for measurement points). Plots may be handed and any garages may be single or double. Kitchen and bathroom layouts are indicative. These plans are correct at the time of going to press, but may be subject to change during construction. Please ensure that you check for specific plot details.  
17/06/19

get in  
touch...  
**03300  
244 944**

everything considered.

ANWYL  
*thoughtful homes*



## the farndon

4 bed detached

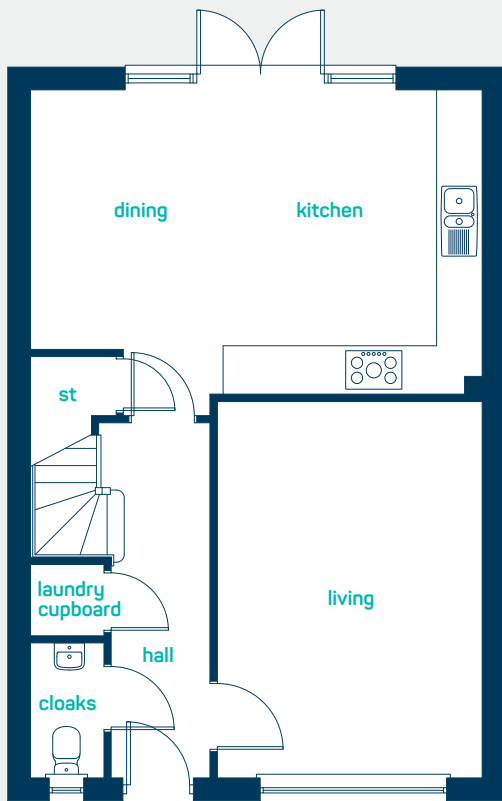
A *spacious* 4 bedroom detached family home. Key features include a large separate living room, master bedroom with en-suite and open plan kitchen, dining room.

[www.anwylhomes.co.uk](http://www.anwylhomes.co.uk)

got  
questions?

call...  
**03300  
244 944**

*everything considered.*

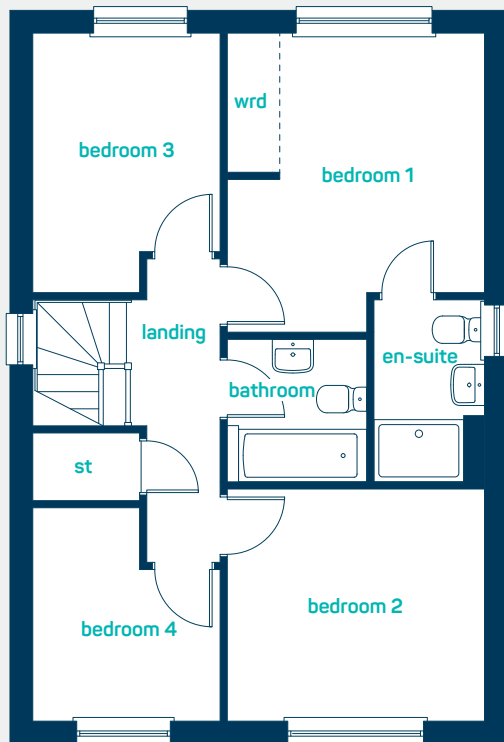


ideal for  
spacious  
living

## ground floor

kitchen/dining	19'7" x 13'2"
laundry cupboard	3'2" x 2'11"
cloaks	5'10" x 3'2"
living room	16'4" x 11'5"

kitchen/dining	5.97m x 4.01m
laundry cupboard	0.96m x 0.90m
cloaks	1.78m x 0.96m
living room	4.97m x 3.48m



## first floor

bedroom 1	13'0" x 11'2"
en-suite	8'0" x 4'9"
bedroom 2	11'2" x 10'0"
bedroom 3	11'2" x 8'1"
bedroom 4	9'2" x 8'0"
bathroom	6'3" x 6'1"

bedroom 1	3.96m x 3.40m
en-suite	2.43m x 1.45m
bedroom 2	3.40m x 3.05m
bedroom 3	3.41m x 2.47m
bedroom 4	2.80m x 2.45m
bathroom	1.90m x 1.86m

get in  
touch...  
**03300  
244 944**

## the farndon

4 bed detached

[www.anwylhomes.co.uk](http://www.anwylhomes.co.uk)

This is a computer generated image of the farndon, elevation treatment may vary. Room sizes are approximate, dimensions are taken from the longest room point (please consult homes advisor for measurement points). Plots may be handed and any garages may be single or double. Kitchen and bathroom layouts are indicative. These plans are correct at the time of going to press, but may be subject to change during construction. Please ensure that you check for specific plot details.  
26/10/2020

everything considered.

**ANWYL**  
*thoughtful homes*



## the dolwen

4 bed detached with garage

A *beautiful* detached home. Key features include characterful bay windows and a master en-suite bedroom.

[www.anwylhomes.co.uk](http://www.anwylhomes.co.uk)

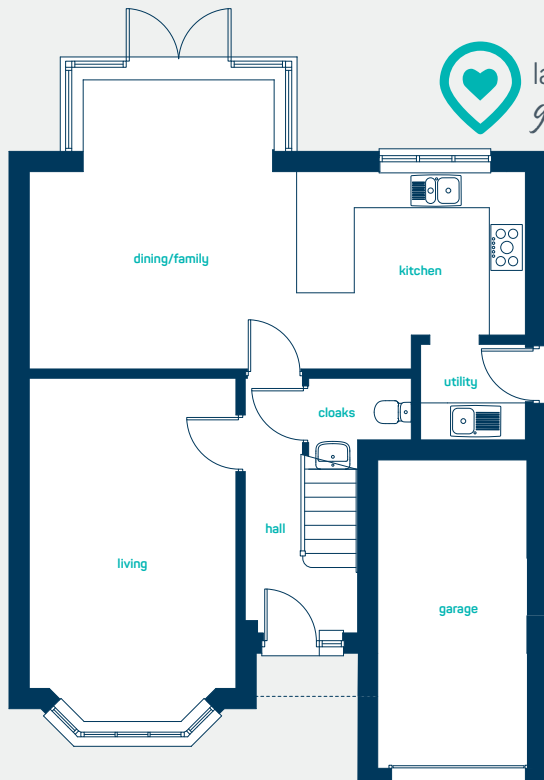
got  
questions?

call...

**03300  
244 944**

*everything considered.*

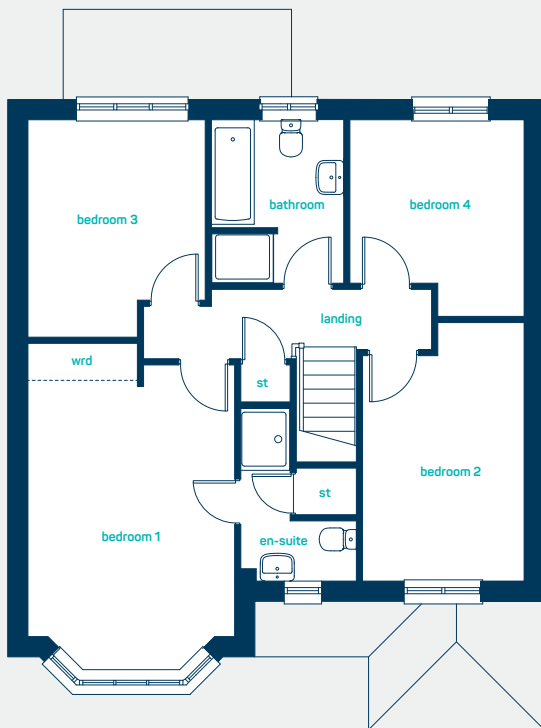
 large kitchen with glazed diner



### ground floor

living room	18' 4" x 11' 0"
kitchen/dining	26' 5" x 15' 5"
cloaks	5' 6" x 3' 6"
utility	5' 7" x 5' 4"

living room	5.59m x 3.35m
kitchen/dining	8.05m x 4.69m
cloaks	1.67m x 1.08m
utility	1.70m x 1.63m



### first floor

bedroom 1	17' 5" x 11' 0"
en-suite	9' 2" x 6' 2"
bedroom 2	13' 9" x 8' 6"
bedroom 3	11' 7" x 9' 5"
bedroom 4	10' 5" x 9' 3"
bathroom	8' 9" x 7' 0"

bedroom 1	5.30m x 3.35m
en-suite	2.80m x 1.87m
bedroom 2	4.19m x 2.60m
bedroom 3	3.52m x 2.86m
bedroom 4	3.17m x 2.81m
bathroom	2.68m x 2.15m

get in touch...  
**03300  
244 944**

## the dolwen

4 bed detached with garage

[www.anwyllhomes.co.uk](http://www.anwyllhomes.co.uk)

This is a computer generated image of the dolwen, elevation treatment may vary. Room sizes are approximate, dimensions are taken from the longest room point (please consult homes advisor for measurement points). Plots may be handed and any garages may be single or double. Kitchen and bathroom layouts are indicative. These plans are correct at the time of going to press, but may be subject to change during construction. Please ensure that you check for specific plot details.  
29/05/19

everything considered.



# Croes Atti, Oakenholt

## Phase 5



### key

- chirk
- powys
- hope
- clwyd
- tenby
- abersoch
- dolwen
- elwy
- penley
- overton
- chester
- porthmadog
- talley
- farndon
- caernarfon



*everything considered.*

.....  
 This plan is a general site layout, not to scale and is intended for guidance only. It does not form any part of the contract. The plan does not show ownership boundaries, easements or wayleaves.  
 Anwyl Homes reserve the right to alter or replace at any time. Please ask our site homes advisor for specific plot details. Turf to rear gardens is not provided.

got questions?  
call 01352 732 391



Email: [croesatti@anwyl.co.uk](mailto:croesatti@anwyl.co.uk)  
A548 Chester Road, Oakenholt, CH6 5WN

[www.anwylhomes.co.uk](http://www.anwylhomes.co.uk)



*everything considered.*