



Scan here to find
out more about
Stoneyetts Village



Stoneyetts Village
Moodiesburn

millerhomes

the place to be®

A new home. The start of a whole new chapter for you and your family. And for us, the part of our job where bricks and mortar becomes a place filled with activity and dreams and fun and love. We put a huge amount of care into the houses we build, but the story's not finished until we match them up with the right people. So, once you've chosen a Miller home, we'll do everything we can to make the rest of the process easy, even enjoyable. From the moment you make your decision until you've settled happily in, we'll be there to help.



Create your perfect home



The great thing about buying a Miller home is that you are able to make it your own from the very beginning. Once you've reserved your home, you can start thinking about how you'd like things to be and even make a few decisions before you move in.

It could be a simple item such as an additional electrical socket or maybe you want to add flooring or fitted wardrobes. Whatever you choose it can be provided before completion of your new home, so you avoid any future disruption.

You may already have some ideas about what you want for your home. Or maybe you're looking for some inspiration. Our award winning specification provides the perfect place to start. Wherever practical, we ask you to choose your own kitchen and bathroom including your own tiles, worktops, appliances and other options. But that is just the beginning. We have a large range of options and extras that you can consider.

When it comes to getting the details right, we're committed to quality throughout. We only work with high-quality brands, Symphony for kitchens, Ideal Standard sanitaryware, Vado fittings and the opportunity to select Zanussi or AEG appliances.

From sleek, designer kitchens to cool, contemporary bathrooms, down to the fine details of tiles and taps, there's plenty to fire your imagination and suggest a whole range of possibilities for you to create a unique living environment.

Important Notice: Although every care has been taken to ensure the accuracy of all the information given, the contents do not form part of any contract, or constitute a representation or warranty, and, as such, should be treated as a guide only. Interested parties should check with the Development Sales Manager and confirm all details with their solicitor. The developer reserves the right to amend the specification, as necessary, without prior notice, but to an equal or higher standard. Please note that items specified in literature and showhomes may depict appliances, fittings and decorative finishes that do not form part of the standard specification. The project is a new development which is currently under construction. Measurements provided have not been surveyed on-site. The measurements have been taken from architect's plans, and, as such, may be subject to variation during the course of construction. Not all the units described have been completed at the time of going to print and measurements and dimensions should be checked with the Sales Adviser and confirmed with solicitors.



Registered Developer



Fulton Alt

The lounge opens, through a separate lobby, into a beautifully designed kitchen and dining room where french doors keep the room light and airy, and make outdoor meals a tempting option. One of the three bedrooms features an en-suite shower, and there is a useful storage cupboard on the landing.



3 Bed
900 sq ft
Scan to view floorplans

Leawood Alt

With a separate laundry to prevent household management from encroaching on the social space, and french doors adding a bright focal point, the kitchen provides a natural hub for everyday family life. With four bedrooms, one of them en-suite, there is always an opportunity to find peaceful seclusion.



4 Bed
1,036 sq ft
Scan to view floorplans

Larchwood Alt

French doors add a focal point to the living and dining room, while the adjoining kitchen keeps cooking and household management separate from the social space. The principal bedroom incorporates an en-suite shower, and the fourth bedroom could become a useful home office.



4 Bed
1,119 sq ft
Scan to view floorplans

Hazelwood

The lounge opens on to a light-filled family kitchen, a beautifully designed space with feature french doors adding extra appeal to the dining area. With a separate laundry, a useful cupboard in the fourth bedroom and a built-in wardrobe in the en-suite principal bedroom, this is a practical, attractive home.



4 Bed
1,150 sq ft
Scan to view floorplans

Hazelwood Alt

The lounge opens on to a light-filled family kitchen, a beautifully designed space with feature french doors adding extra appeal to the dining area. With a separate laundry, a useful cupboard in the fourth bedroom and an en-suite principal bedroom, this is a practical, attractive home.



4 Bed
1,150 sq ft
Scan to view floorplans

Maplewood

With twin windows and central french doors, the kitchen and dining room maximises the benefits of the garden to present an adaptable, comfortable setting for family life. The lounge features a stylish bay window, and the delightful principal bedroom includes an en-suite shower and a sumptuous dressing area.



4 Bed
1,297 sq ft
Scan to view floorplans

Maplewood Alt

With twin windows and central french doors, the kitchen and dining room maximises the benefits of the garden to present an adaptable, comfortable setting for family life. The lounge features a stylish bay window, and the delightful principal bedroom includes an en-suite shower and a sumptuous dressing area.



4 Bed
1,297 sq ft
Scan to view floorplans

Greenwood

French doors add a premium touch to the light, airy family kitchen and dining room, a superb setting for family life that shares the ground floor with a more formal bay-windowed lounge. A gallery landing leads to four bedrooms, one of them en-suite with twin wardrobes.



4 Bed
1,342 sq ft
Scan to view floorplans

Langwood

A bay window and double doors give the lounge a classic elegance that complements the bright, relaxed family kitchen and dining room with its feature french doors. There is a separate laundry room and a study, and the four bedrooms include a luxurious L-shaped en-suite principal bedroom with a walk-in wardrobe.



4 Bed
1,349 sq ft
Scan to view floorplans

Langwood Alt

A bay window and double doors give the lounge a classic elegance that complements the bright, relaxed family kitchen and dining room with its feature french doors. There is a separate laundry room and a study, and the four bedrooms include a luxurious L-shaped en-suite principal bedroom.



4 Bed
1,349 sq ft
Scan to view floorplans

Oakwood

From the bay window in the lounge to the superb family kitchen with garden access, from the gallery landing and the twin wardrobes of the en-suite principal bedroom, this is a home filled with premium features. The study provides a peaceful retreat for working from home or creating a computer room.



4 Bed
1,388 sq ft
Scan to view floorplans

Oakwood Alt

From the bay window in the lounge to the superb family kitchen with garden access, from the gallery landing to the en-suite principal bedroom, this is a home filled with premium features. The study provides a peaceful retreat for working from home or creating a computer room.



4 Bed
1,388 sq ft
Scan to view floorplans

Hartwood

Behind the attractive bay window and canopied entrance, this comfortable home features a lounge that opens through to a family dining space extending into an expertly planned kitchen, while french doors keep the whole space light. A shared shower room provides three of the four bedrooms with en-suite facilities.



4 Bed
1,424 sq ft
Scan to view floorplans

Hartwood Alt

Behind the bay window and canopied entrance, this comfortable home features a lounge that opens through to a family dining space extending into a practical, well-planned kitchen, while french doors keep the whole space light. A shared shower room provides three of the four bedrooms with en-suite facilities.



4 Bed
1,424 sq ft
Scan to view floorplans

Lockwood

The elegantly proportioned exterior reflects the immense prestige of this exceptional family home. From the lounge's bay window to the feature staircase, from the french doors of the dining room to the en-suite showers and built-in wardrobes in the principal bedroom, comfort is combined with visual appeal.



4 Bed
1,446 sq ft
Scan to view floorplans

Lockwood Alt

The elegantly proportioned exterior reflects the immense prestige of this exceptional family home. From the lounge's bay window to the feature staircase, from the french doors of the dining room to the en-suite showers in two of the four bedrooms, comfort is combined with visual appeal.



4 Bed
1,446 sq ft
Scan to view floorplans

Limewood

Complementing an elegant lounge with a bay window, and featuring french doors and a separate laundry room, the kitchen and dining room forms a natural hub for family life. To maximise convenience, the private shower room shared by two bedrooms means that three of the four bedrooms have en-suite facilities.



4 Bed
1,558 sq ft
Scan to view floorplans

Limewood Alt

Complementing an elegant lounge with a bay window, and featuring french doors and a separate laundry room, the kitchen and dining room forms a natural hub for family life. To maximise convenience, the private shower room shared by two bedrooms means that three of the four bedrooms have en-suite facilities.



4 Bed
1,558 sq ft
Scan to view floorplans

Elmford

Double doors open to combine the lounge, dining room and kitchen into a single space from bay window to french doors, an unforgettable setting for relaxed social gatherings. With five bedrooms, two of which have en-suite showers, this is a home capable of accommodating the largest family in comfort.



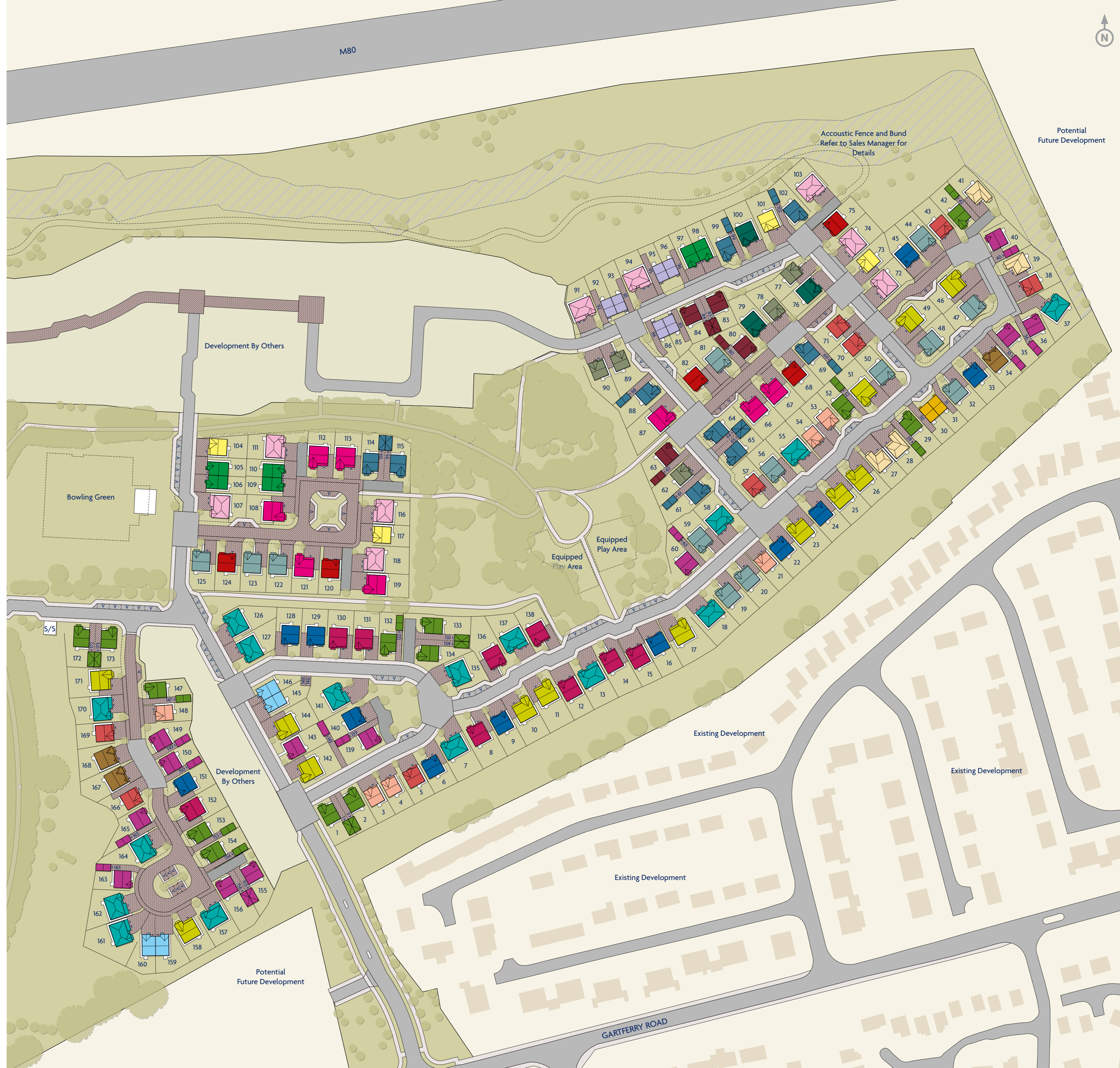
5 Bed
1,510 sq ft
Scan to view floorplans

Elmford Alt

Double doors open to combine the lounge, dining room and kitchen into a single space from bay window to french doors, an unforgettable setting for relaxed social gatherings. With five bedrooms, two of which have en-suite showers, this is a home capable of accommodating the largest family in comfort.



5 Bed
1,510 sq ft
Scan to view floorplans



Download our free QR reader
Throughout our showhomes, or in some of our brochures, you'll see QR codes. The codes on stickers beside appliances in the showhome link to informative 'how to' videos about that particular feature. The codes in the brochures take you to visualisations of a specific home, or of the whole development. So just download the free reader via the Miller Homes website, the App Store or Google Play, and you'll have expert advice and information at your fingertips. It's another of the little ways we try to help.



The artist's impressions (computer-generated graphics) have been prepared for illustrative purposes and are indicative only. They do not form part of any contract, or constitute a representation or warranty. External appearance may be subject to variation upon completion of the project. Please note that the site plan is not drawn to scale.

Hartwood A

Overview

Behind the attractive bay window and canopied entrance, this comfortable, exciting home features a lounge that opens through to a family dining space extending into a practical, expertly planned kitchen, while french doors keep the whole space light and fresh. Upstairs, a shared shower room provides three of the four bedrooms with en-suite facilities.

Ground Floor

Lounge
3.299m x 5.710m
10'10" x 18'9"

**Kitchen/
Breakfast/Family**
8.203m x 3.254m
26'11" x 10'8"

WC
1.832m x 1.289m
6'0" x 4'3"

First Floor

Principal Bedroom
3.299m x 4.153m
10'10" x 13'7"

En-Suite 1
2.108m x 1.695m
6'11" x 5'7"

Bedroom 2
4.099m x 3.076m
13'5" x 10'1"

En-Suite 2
1.713m x 1.858m
5'7" x 6'1"

Bedroom 3
3.283m x 3.176m
10'9" x 10'5"

Bedroom 4
2.523m x 3.424m
8'3" x 11'3"

Bathroom
2.197m x 2.287m
7'3" x 7'6"

Floor Space

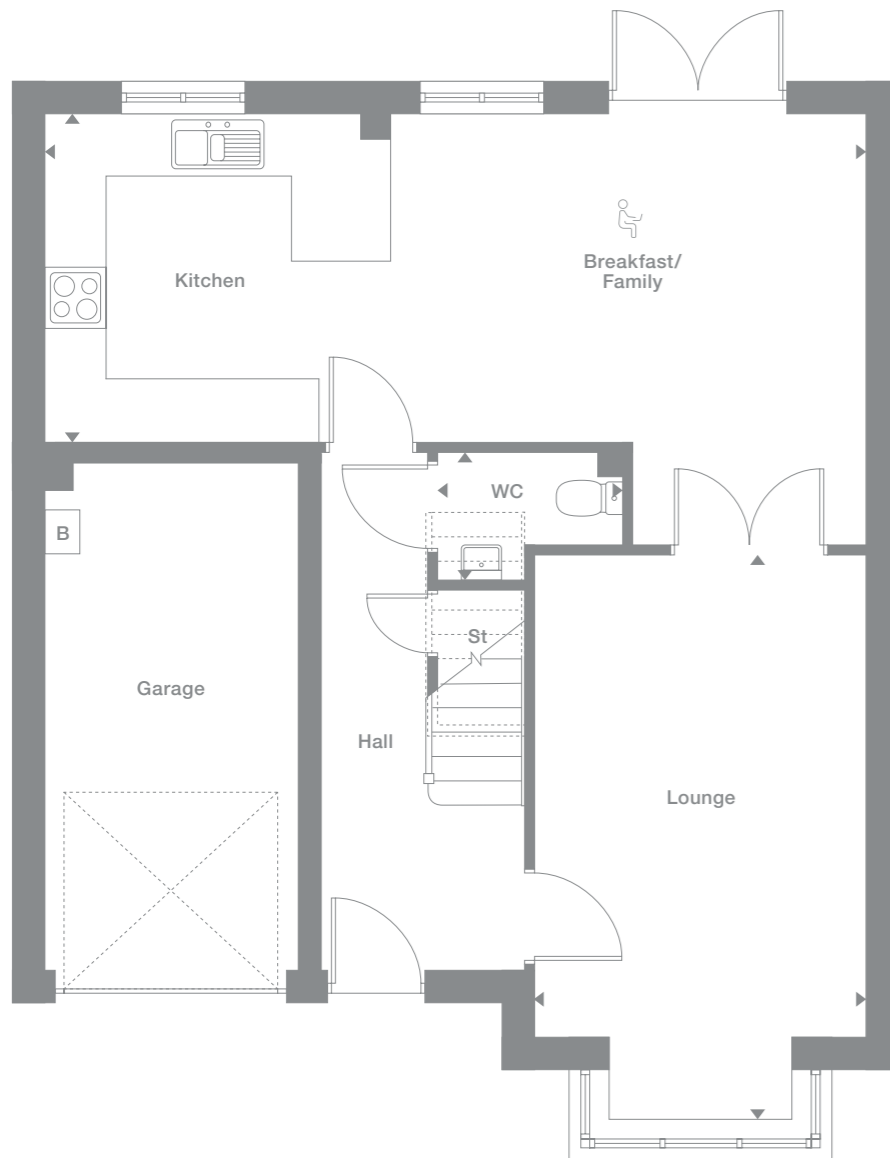
1,424 sq ft

Some plots may have additional windows. Please see Development Sales Manager for details

Plots may be a mirror image of the floor plans. Please see Development Sales Manager for details

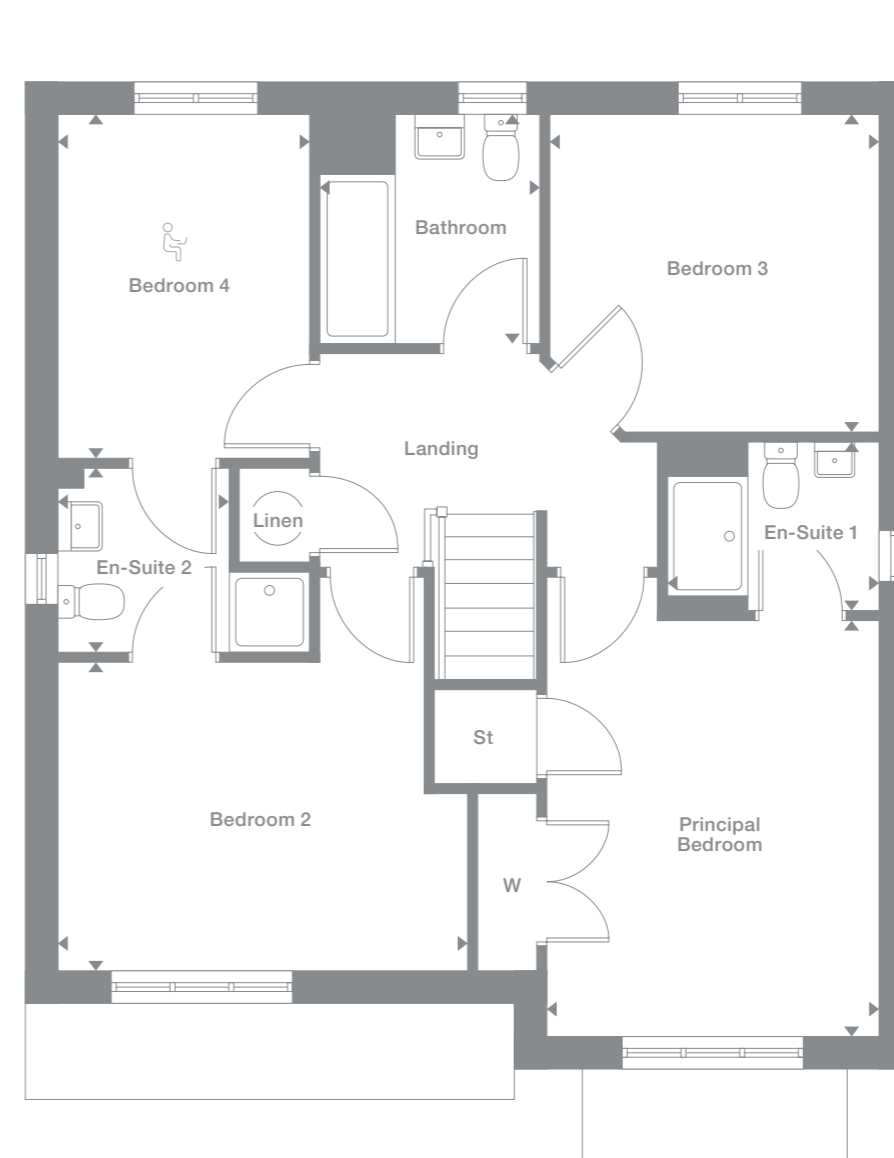


Ground Floor



Stoneyetts Village

First Floor



B = Boiler

Office space area

Photography represents typical Miller Homes' interiors and exteriors. All plans in this brochure are not drawn to scale and are for illustrative purposes only. Consequently, they do not form part of any contract. Room layouts are provisional and may be subject to alteration. Please refer to the 'Important Notice' section at the back of this brochure for more information.

Hartwood

Overview

Behind the attractive bay window and canopied entrance, this comfortable, exciting home features a lounge that opens through to a family dining space extending into a practical, expertly planned kitchen, while french doors keep the whole space light and fresh. Upstairs, a shared shower room provides three of the four bedrooms with en-suite facilities.

Ground Floor

Lounge
3.299m x 5.710m
10'10" x 18'9"

**Kitchen/
Breakfast/Family**
8.203m x 3.254m
26'11" x 10'8"

WC
1.832m x 1.289m
6'0" x 4'3"

First Floor

Principal Bedroom
3.299m x 4.153m
10'10" x 13'7"

En-Suite 1
2.108m x 1.695m
6'11" x 5'7"

Bedroom 2
4.099m x 3.076m
13'5" x 10'1"

En-Suite 2
1.713m x 1.858m
5'7" x 6'1"

Bedroom 3
3.283m x 3.176m
10'9" x 10'5"

Bedroom 4
2.523m x 3.424m
8'3" x 11'3"

Bathroom
2.197m x 2.287m
7'3" x 7'6"

Floor Space

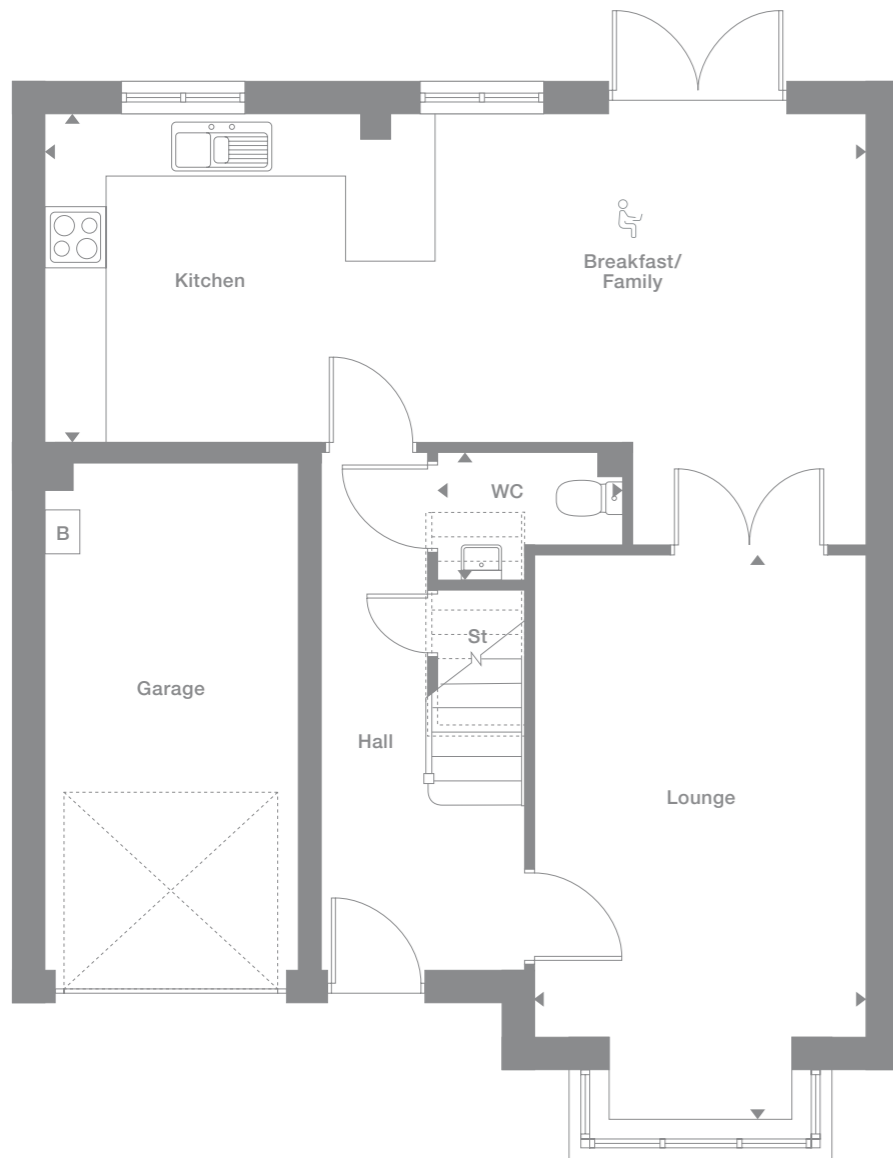
1,424 sq ft

Some plots may have additional windows. Please see Development Sales Manager for details

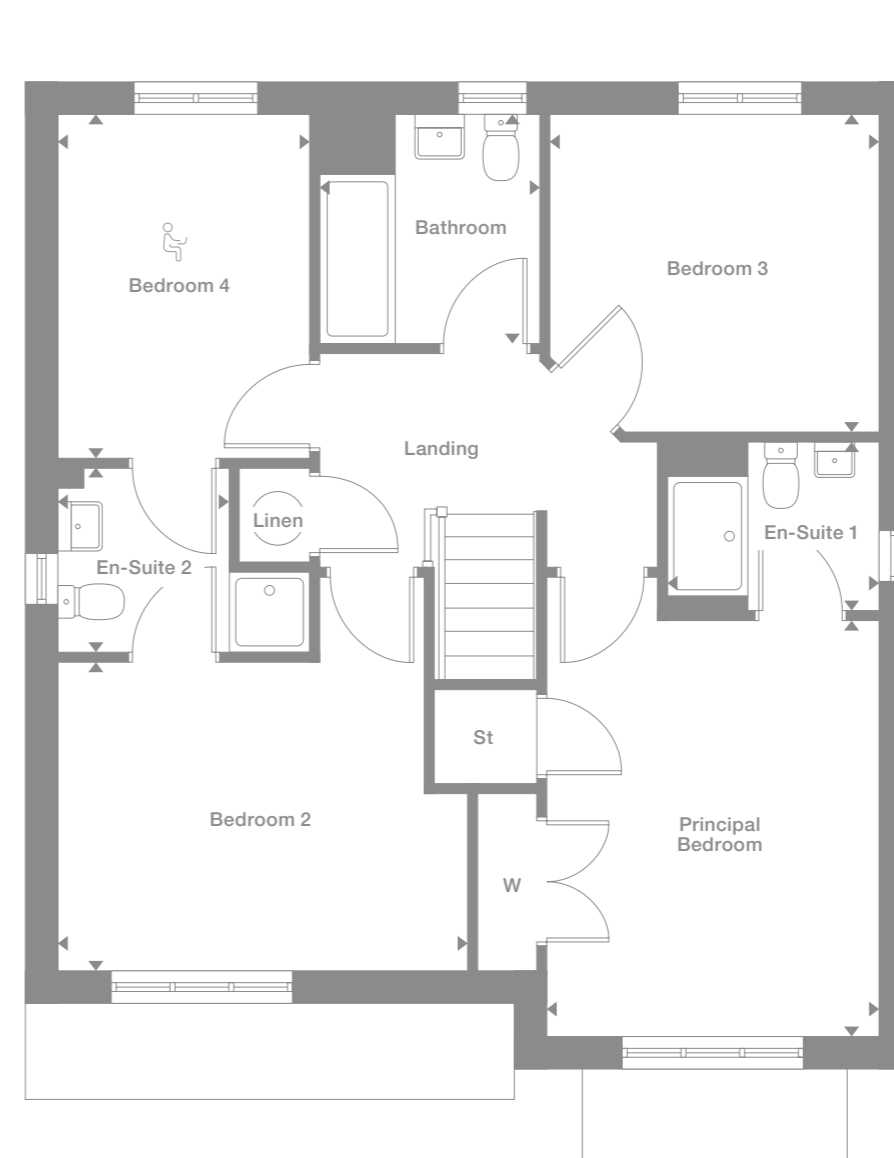
Plots may be a mirror image of the floor plans. Please see Development Sales Manager for details



Ground Floor



First Floor



Office space area

Fulton

Overview

The lounge opens, through a separate lobby, into a beautifully designed kitchen and dining room where french doors keep the room light and airy, and make outdoor meals a tempting option. One of the three bedrooms features an en-suite shower and built-in wardrobe, and there is a useful storage cupboard on the landing.

Ground Floor

Lounge
3.989m x 3.870m
13'1" x 12'8"

Kitchen/Dining
5.051m x 2.996m
16'7" x 9'10"

WC
1.880m x 1.172m
6'2" x 3'10"

First Floor

Principal Bedroom
2.889m x 3.597m
9'6" x 11'10"

En-Suite
2.290m x 1.427m
7'6" x 4'8"

Bedroom 2
2.927m x 2.920m
9'7" x 9'7"

Bedroom 3
2.267m x 2.432m
7'5" x 8'0"

Bathroom
2.100m x 1.700m
6'11" x 5'7"

Floor Space

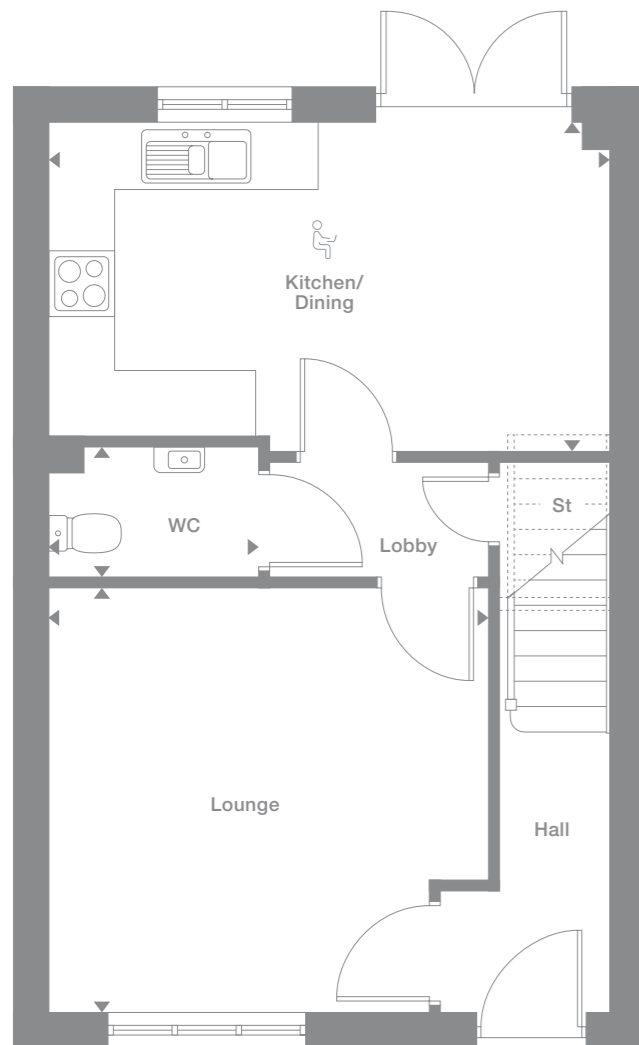
900 sq ft

† Window not applicable to terraced/semi-detached plots

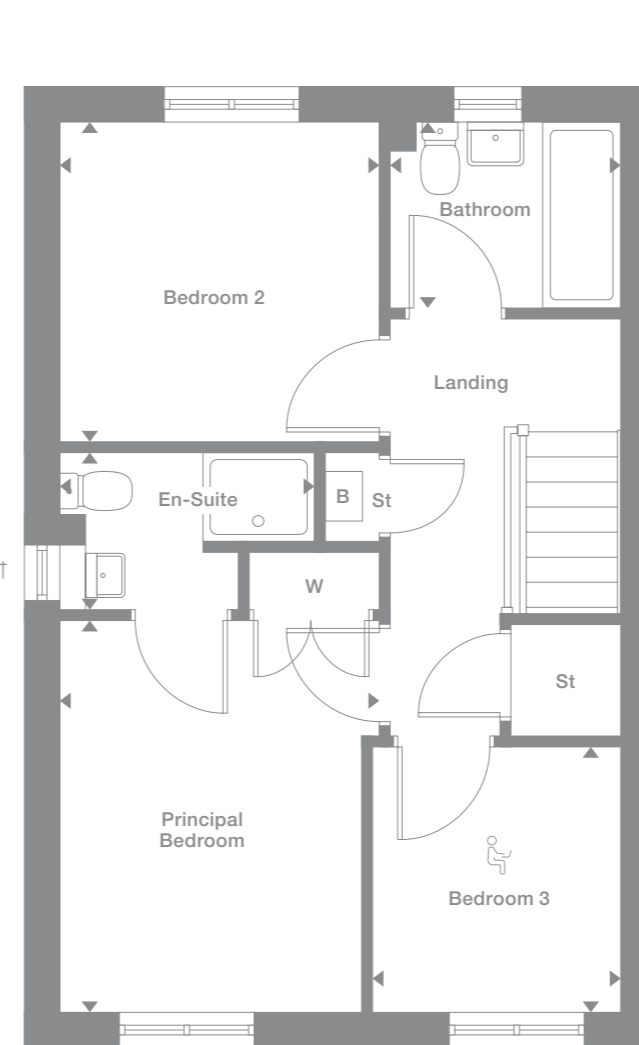
Plots may be a mirror image of the floor plans. Please see Development Sales Manager for details



Ground Floor



First Floor



Office space area

Leawood

Overview

With a separate laundry to prevent household management from encroaching on the social space, and french doors adding a bright focal point, the kitchen provides a natural hub for everyday family life. With four bedrooms, one of them en-suite with a built-in wardrobe, there is always an opportunity to find peaceful seclusion.

Ground Floor

Lounge
3.124m x 5.013m
10'3" x 16'5"

Kitchen/Dining
4.791m x 2.936m
15'9" x 9'8"

Laundry
2.018m x 1.747m
6'7" x 5'9"

WC
2.018m x 1.052m
6'7" x 3'5"

First Floor

Principal Bedroom
4.069m x 2.513m
13'4" x 8'3"

En-Suite
1.645m x 2.018m
5'5" x 6'7"

Bedroom 2
2.525m x 3.965m
8'3" x 13'0"

Bedroom 3
2.322m x 3.340m
7'7" x 11'0"

Bedroom 4
2.322m x 3.340m
7'7" x 11'0"

Bathroom
2.078m x 2.200m
6'10" x 7'3"

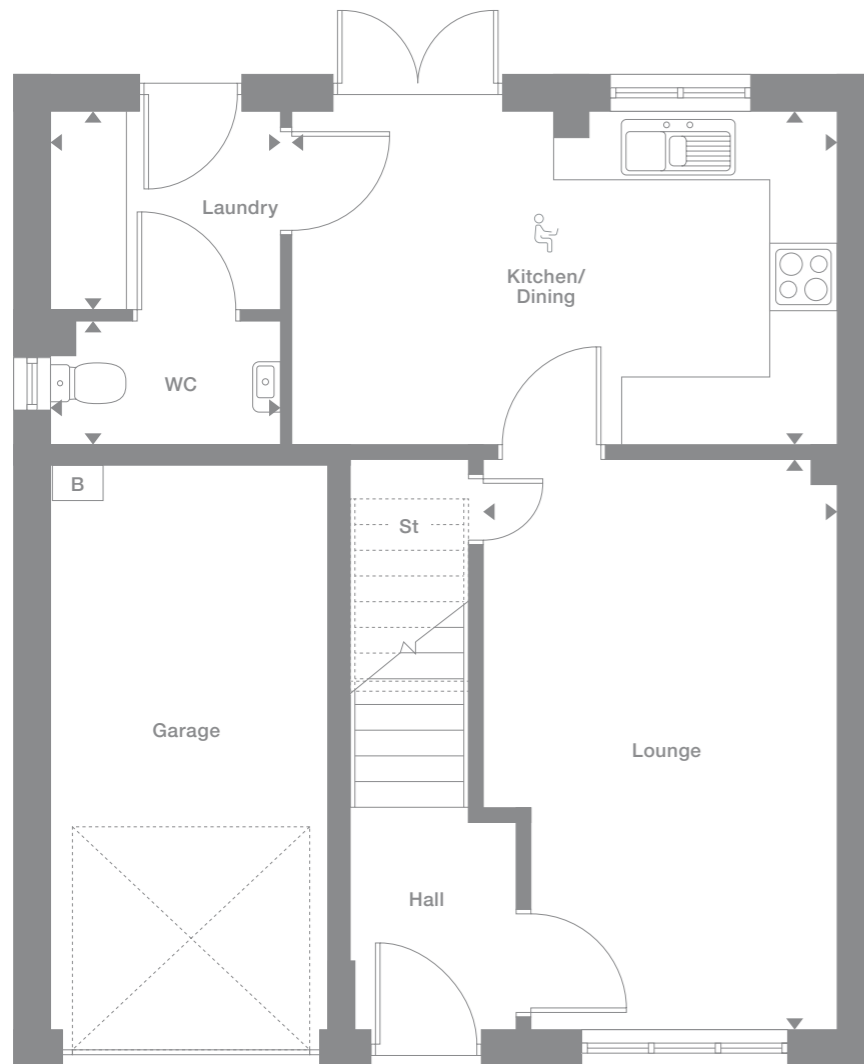
Floor Space

1,036 sq ft

Plots may be a mirror image of the floor plans. Please see Development Sales Manager for details

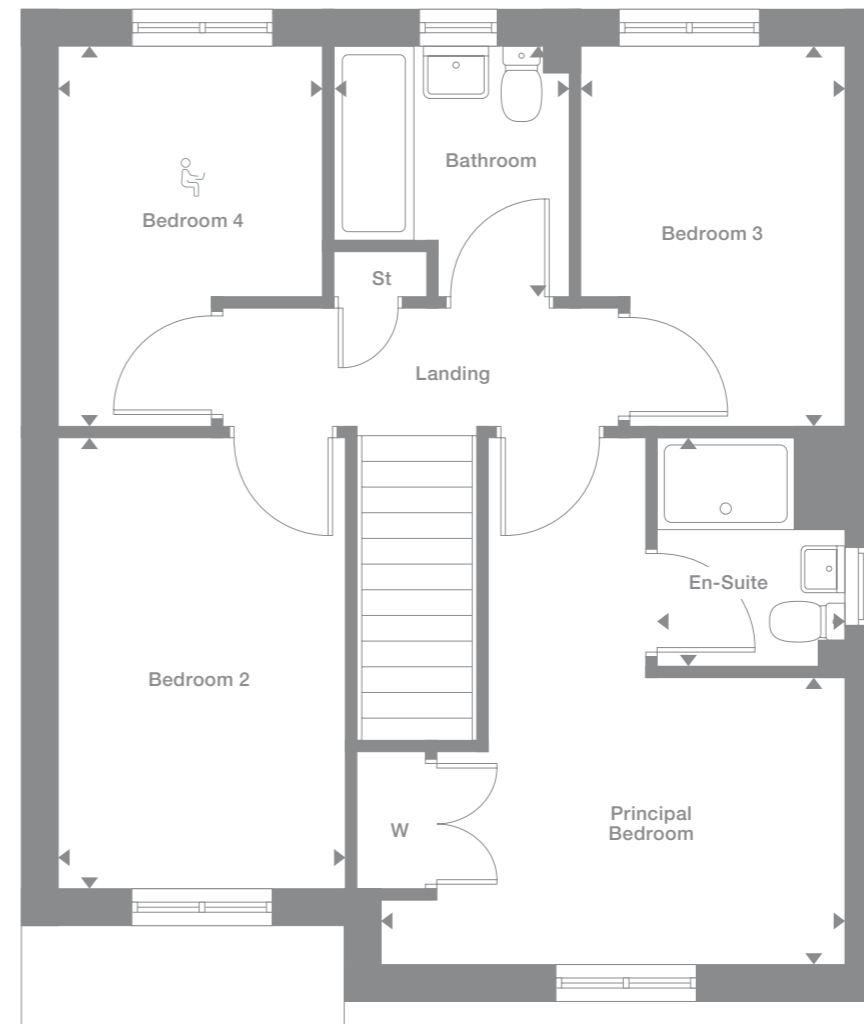


Ground Floor



Stoneyetts Village

First Floor



B = Boiler

Office space area

Photography represents typical Miller Homes' interiors and exteriors. All plans in this brochure are not drawn to scale and are for illustrative purposes only. Consequently, they do not form part of any contract. Room layouts are provisional and may be subject to alteration. Please refer to the 'Important Notice' section at the back of this brochure for more information.

Larchwood

Overview

French doors add a focal point to the living and dining room, while the adjoining kitchen keeps cooking and household management separate from the social space without any loss of convenience. The principal bedroom includes a wardrobe and an en-suite shower, and the fourth bedroom could become a useful home office.

Ground Floor

Living/Dining
3.497m x 6.360m
11'6" x 20'10"

Kitchen
2.605m x 3.407m
8'7" x 11'2"

WC
1.980m x 1.127m
6'6" x 3'8"

First Floor

Principal Bedroom
3.101m x 4.413m
10'2" x 14'6"

En-Suite
2.276m x 1.255m
7'6" x 4'1"

Bedroom 2
3.015m x 3.434m
9'11" x 11'3"

Bedroom 3
2.604m x 3.258m
8'7" x 10'8"

Bedroom 4
2.395m x 2.988m
7'10" x 9'10"

Bathroom
1.885m x 2.167m
6'2" x 7'1"

Floor Space

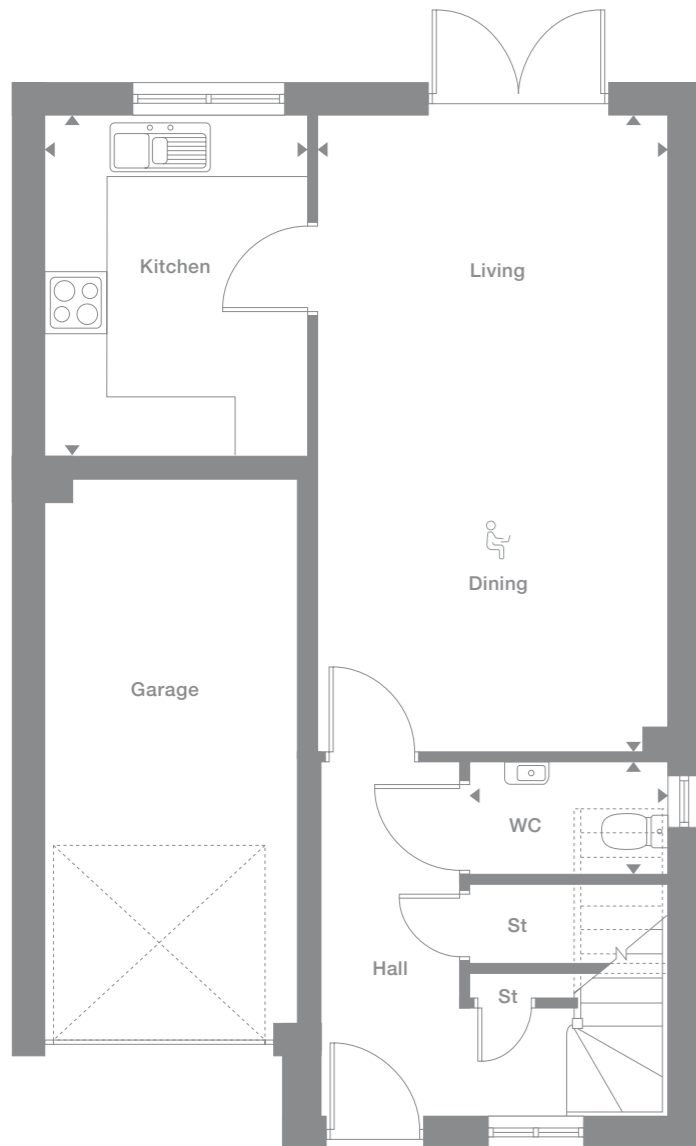
1,119 sq ft

† Window not applicable to terraced/semi-detached plots

Plots may be a mirror image of the floor plans. Please see Development Sales Manager for details

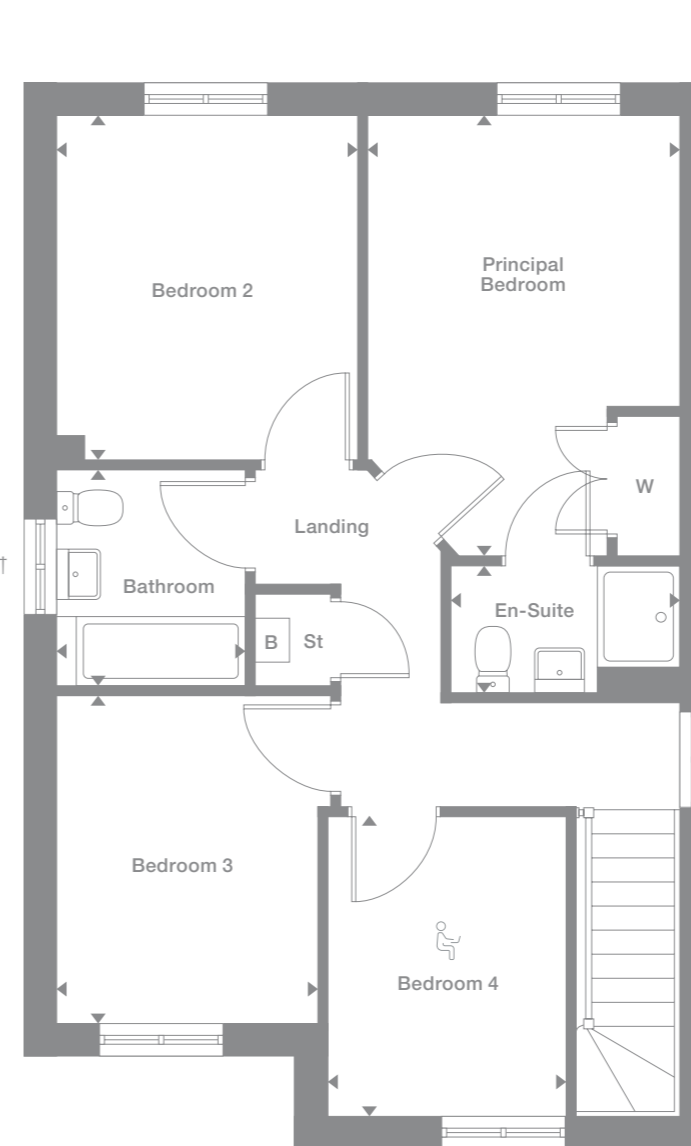


Ground Floor



Stoneyetts Village

First Floor



B = Boiler

Office space area

Photography represents typical Miller Homes' interiors and exteriors. All plans in this brochure are not drawn to scale and are for illustrative purposes only. Consequently, they do not form part of any contract. Room layouts are provisional and may be subject to alteration. Please refer to the 'Important Notice' section at the back of this brochure for more information.

Hazelwood

Overview

The lounge opens on to a light-filled family kitchen, a beautifully designed space with feature french doors adding extra appeal to the dining area. With a separate laundry, a useful cupboard in the fourth bedroom and a built-in wardrobe in the en-suite principal bedroom, this is a practical, attractive home.

Ground Floor

Lounge
3.319m x 4.929m
10'11" x 16'2"

Kitchen/Dining
5.399m x 3.189m
17'9" x 10'6"

Laundry
2.067m x 1.958m
6'9" x 6'5"

WC
2.067m x 1.080m
6'9" x 3'7"

First Floor

Principal Bedroom
3.685m x 2.893m
12'1" x 9'6"

En-Suite
2.062m x 2.541m
6'9" x 8'4"

Bedroom 2
3.736m x 2.608m
12'3" x 8'7"

Bedroom 3
3.732m x 2.608m
12'3" x 8'7"

Bedroom 4
3.056m x 2.648m
10'0" x 8'8"

Bathroom
1.922m x 2.223m
6'4" x 7'4"

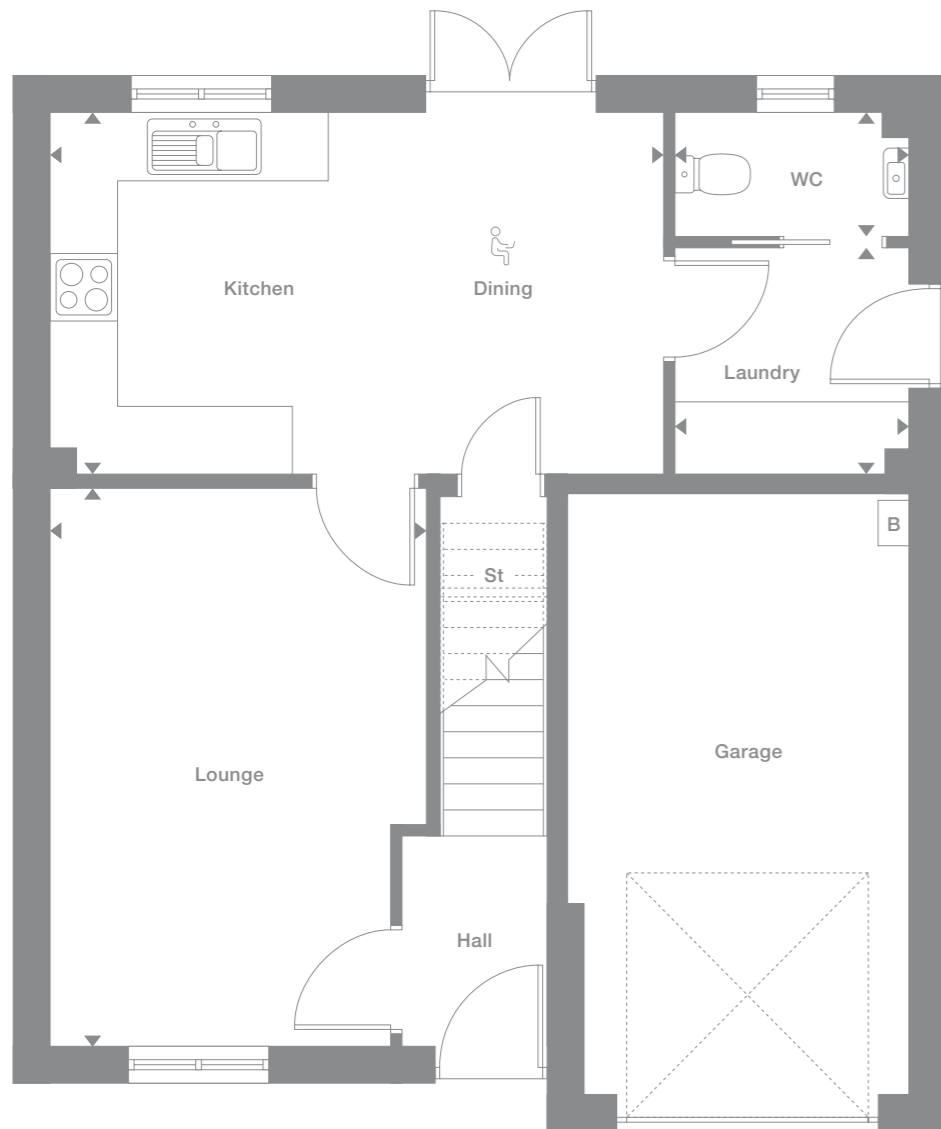
Floor Space

1,150 sq ft

Plots may be a mirror image of the floor plans. Please see Development Sales Manager for details

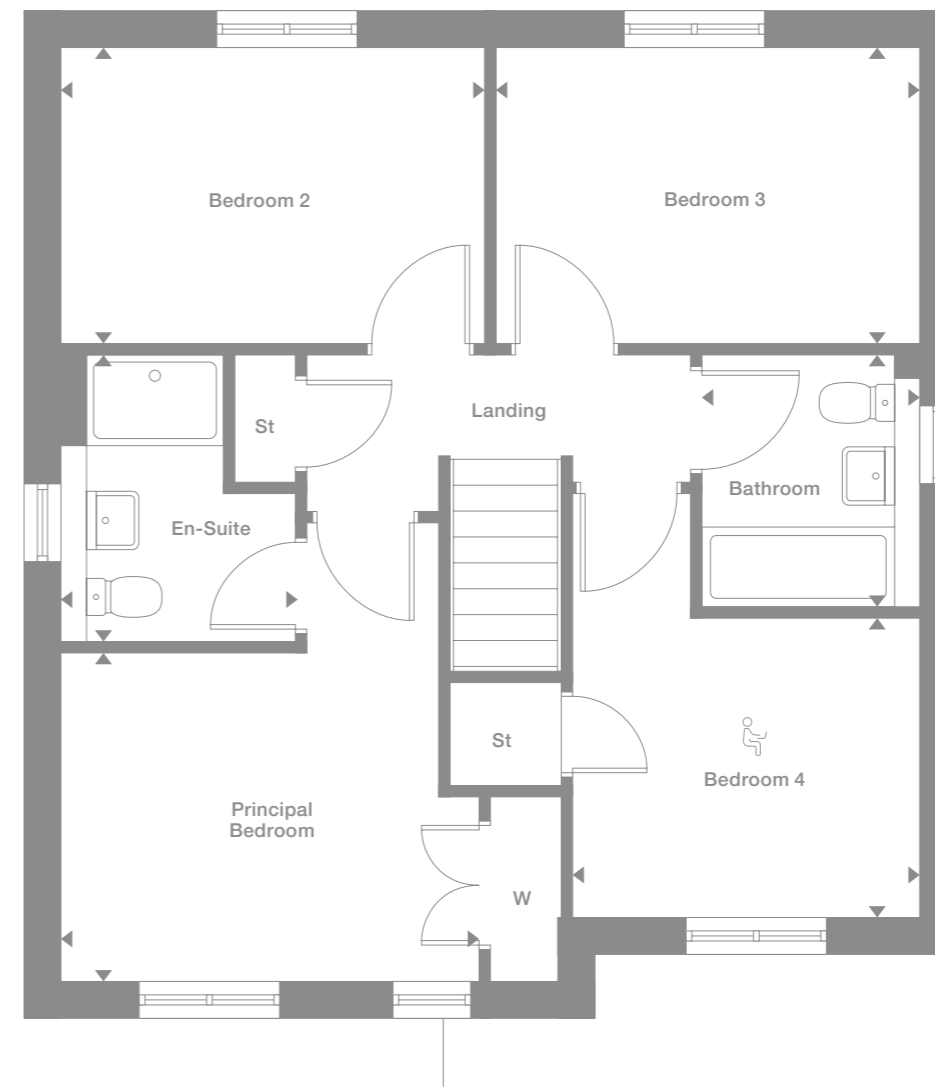


Ground Floor



Stoneyetts Village

First Floor



B = Boiler

Office space area

Photography represents typical Miller Homes' interiors and exteriors. All plans in this brochure are not drawn to scale and are for illustrative purposes only. Consequently, they do not form part of any contract. Room layouts are provisional and may be subject to alteration. Please refer to the 'Important Notice' section at the back of this brochure for more information.

Maplewood

Overview

With twin windows and central french doors, the kitchen and dining room maximises the benefits of the garden to present an adaptable, comfortable setting for family life. The lounge features a stylish bay window, and the delightful principal bedroom includes an en-suite shower and a sumptuous dressing area with twin wardrobes.

Ground Floor

Lounge
3.003m x 4.728m
9'10" x 15'6"

Family/Dining/Kitchen
8.143m x 2.800m
26'9" x 9'2"

Laundry
1.654m x 1.287m
5'5" x 4'3"

WC
1.469m x 1.774m
4'10" x 5'10"

First Floor

Principal Bedroom
5.017m x 4.291m
16'6" x 14'1"

En-Suite
2.637m x 1.230m
8'8" x 4'0"

Bedroom 2
3.026m x 4.014m
9'11" x 13'2"

Bedroom 3
2.435m x 4.224m
8'0" x 13'10"

Bedroom 4
3.066m x 3.004m
10'1" x 9'10"

Bathroom
2.443m x 3.004m
8'0" x 9'10"

Floor Space

1,297 sq ft

Plots may be a mirror image of the floor plans. Please see Development Sales Manager for details

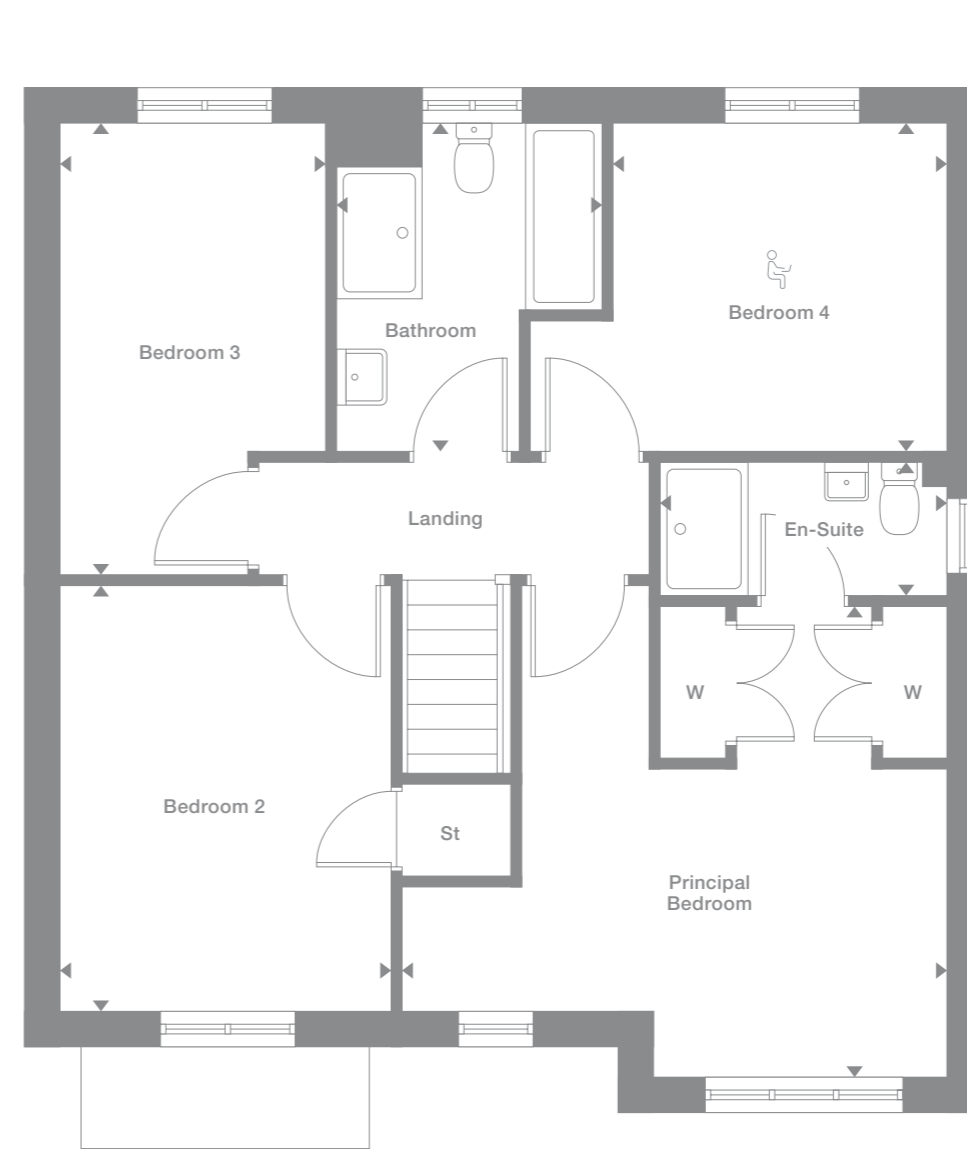


Ground Floor



Stoneyetts Village

First Floor



B = Boiler

Office space area

Photography represents typical Miller Homes' interiors and exteriors. All plans in this brochure are not drawn to scale and are for illustrative purposes only. Consequently, they do not form part of any contract. Room layouts are provisional and may be subject to alteration. Please refer to the 'Important Notice' section at the back of this brochure for more information.

Greenwood

Overview

French doors set into a panoramic window add a premium touch to the light, airy family kitchen and dining room, a superb setting for family life that shares the ground floor with a more formal bay-windowed lounge. A gallery landing leads to four bedrooms, one of them en-suite with twin wardrobes.

Ground Floor

Lounge
3.571m x 5.245m
11'9" x 17'2"

Kitchen/Dining/Family
4.970m x 5.800m
16'4" x 19'0"

Laundry
3.013m x 1.276m
9'11" x 4'2"

WC
2.167m x 1.129m
7'1" x 3'8"

First Floor

Principal Bedroom
2.945m x 3.985m
9'8" x 13'1"

En-Suite
2.517m x 1.487m
8'3" x 4'11"

Bedroom 2
3.571m x 3.798m
11'9" x 12'6"

Bedroom 3
2.565m x 4.048m
8'5" x 13'3"

Bedroom 4
2.801m x 2.920m
9'2" x 9'7"

Bathroom
2.565m x 2.222m
8'5" x 7'3"

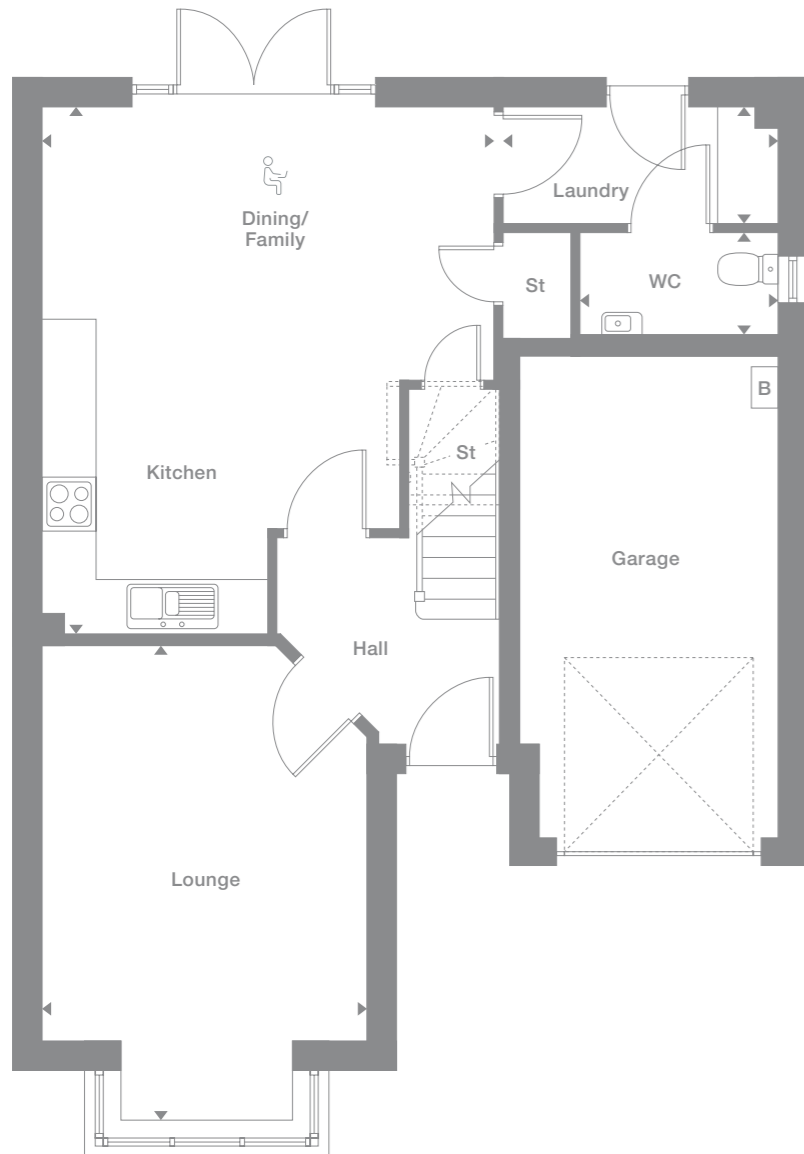
Floor Space

1,342 sq ft

Plots may be a mirror image of the floor plans. Please see Development Sales Manager for details

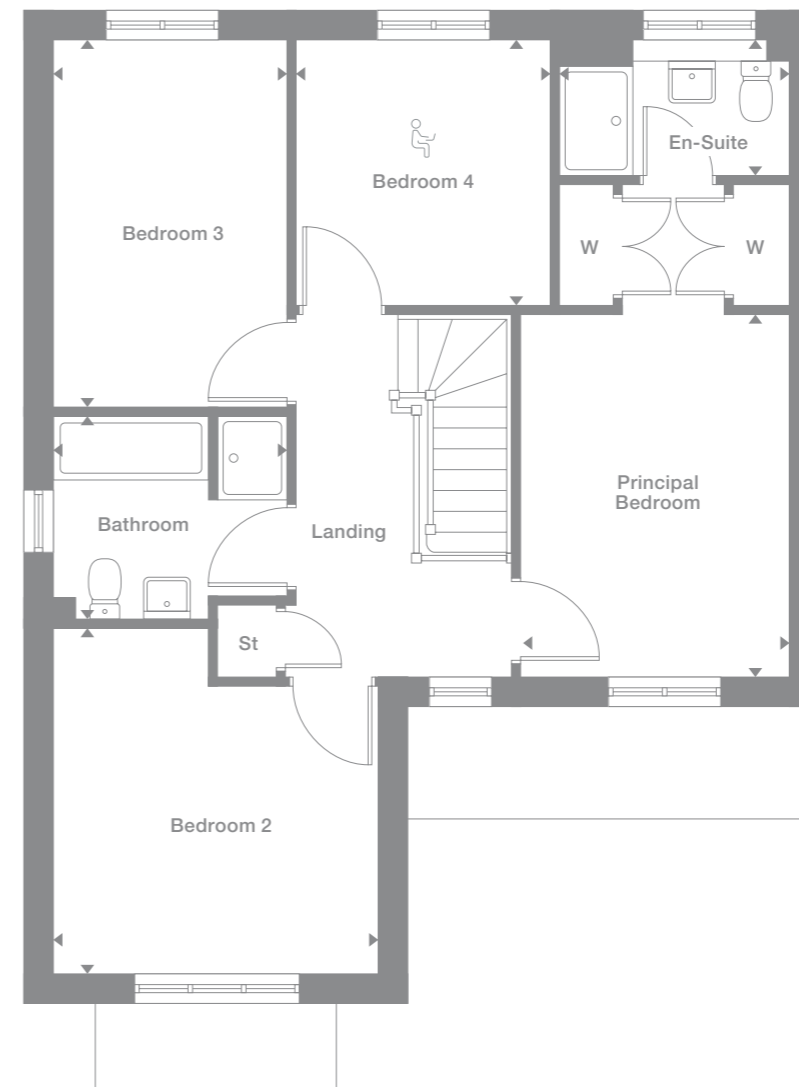


Ground Floor



Stoneyetts Village

First Floor



B = Boiler

 Office space area

Photography represents typical Miller Homes' interiors and exteriors. All plans in this brochure are not drawn to scale and are for illustrative purposes only. Consequently, they do not form part of any contract. Room layouts are provisional and may be subject to alteration. Please refer to the 'Important Notice' section at the back of this brochure for more information.

Langwood

Overview

A bay window and double doors give the lounge a classic elegance that counterpoints the bright, relaxed family kitchen and dining room with its feature french doors. There is a separate laundry room and a study, and the four bedrooms include a luxurious L-shaped en-suite principal bedroom with a walk-in wardrobe.

Ground Floor

Lounge
3.042m x 5.510m
10'0" x 18'1"

Kitchen/Dining/Family
7.975m x 3.017m
26'2" x 9'11"

Laundry
1.649m x 1.714m
5'5" x 5'7"

Study
2.659m x 2.337m
8'9" x 7'8"

WC
2.659m x 1.241m
8'9" x 4'1"

First Floor

Principal Bedroom
5.309m x 2.962m
17'5" x 9'9"

En-Suite
1.523m x 2.200m
5'0" x 7'3"

Bedroom 2
2.565m x 3.854m
8'5" x 12'8"

Bedroom 3
2.566m x 3.796m
8'5" x 12'5"

Bedroom 4
2.513m x 2.388m
8'3" x 7'10"

Bathroom
2.696m x 1.913m
8'10" x 6'3"

Floor Space

1,349 sq ft

Some plots may have additional windows. Please see Development Sales Manager for details

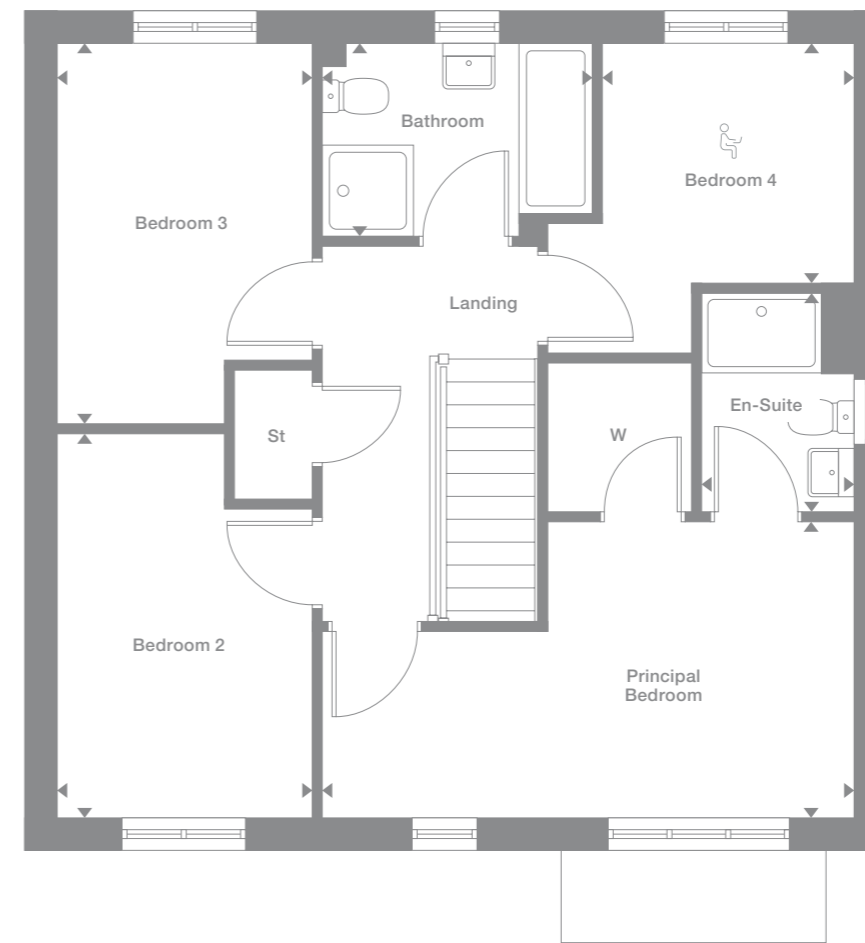
Plots may be a mirror image of the floor plans. Please see Development Sales Manager for details



Ground Floor



First Floor



Office space area

Oakwood

Overview

From the bay window in the lounge to the superb family kitchen with garden access, from the gallery landing and the twin wardrobes of the en-suite principal bedroom, this is a home filled with premium features. The study provides a peaceful retreat for working from home or creating a computer room.

Ground Floor

Lounge
3.568m x 5.473m
11'8" x 17'11"

Kitchen/Family/Dining
7.146m x 3.805m
23'5" x 12'6"

Study
2.057m x 2.361m
6'9" x 7'9"

Laundry
2.057m x 1.730m
6'9" x 5'8"

WC
2.064m x 1.125m
6'9" x 3'8"

First Floor

Principal Bedroom
2.951m x 3.053m
9'8" x 10'0"

En-Suite
2.353m x 1.443m
7'9" x 4'9"

Bedroom 2
3.790m x 2.752m
12'5" x 9'0"

Bedroom 3
3.257m x 2.752m
10'8" x 9'0"

Bedroom 4
3.395m x 3.178m
11'2" x 10'5"

Bathroom
2.610m x 2.001m
8'7" x 6'7"

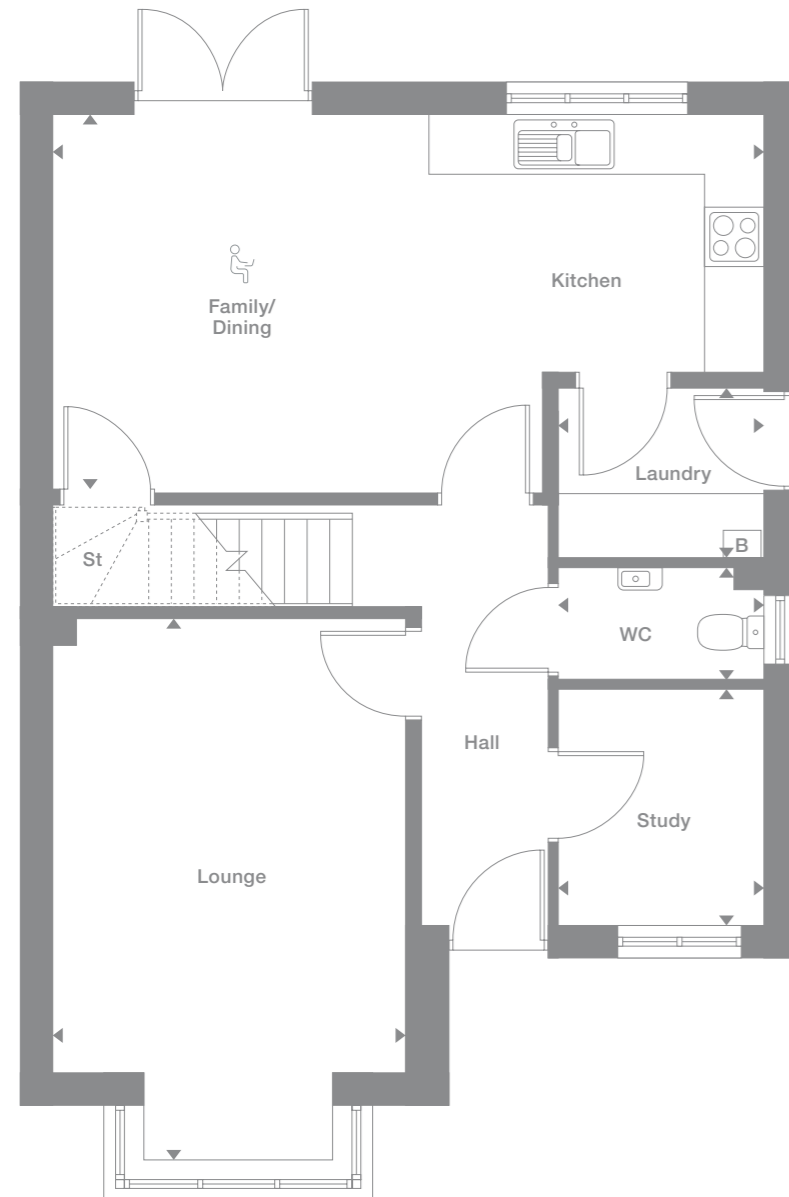
Floor Space

1,388 sq ft

Plots may be a mirror image of the floor plans. Please see Development Sales Manager for details

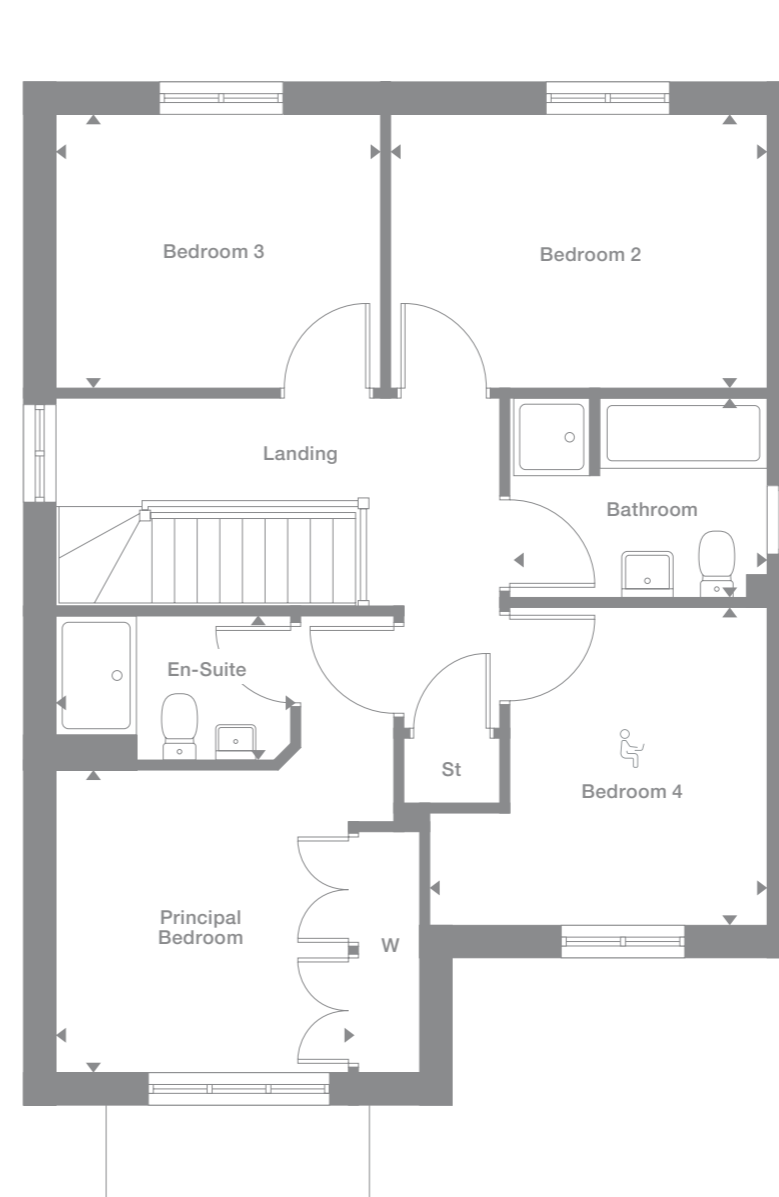


Ground Floor



Stoneyetts Village

First Floor



B = Boiler

Office space area

Photography represents typical Miller Homes' interiors and exteriors. All plans in this brochure are not drawn to scale and are for illustrative purposes only. Consequently, they do not form part of any contract. Room layouts are provisional and may be subject to alteration. Please refer to the 'Important Notice' section at the back of this brochure for more information.

Lockwood

Overview

The elegantly proportioned exterior reflects the immense prestige of this exceptional family home. From the lounge's bay window to the feature staircase with half landing, from the french doors of the dining room to the en-suite showers and built-in wardrobes in the principal bedroom, comfort is combined with visual appeal.

Ground Floor

Lounge
3.635m x 5.856m
11'11" x 19'3"

Kitchen/Dining
6.207m x 4.223m
20'4" x 13'10"

Laundry
1.818m x 2.737m
6'0" x 9'0"

WC
1.818m x 1.386m
6'0" x 4'7"

First Floor

Principal bedroom
3.464m x 3.319m
11'4" x 10'11"

En-Suite 1
1.982m x 1.670m
6'6" x 5'6"

Bedroom 2
3.492m x 3.173m
11'5" x 10'5"

En-Suite 2
2.337m x 1.910m
7'8" x 6'3"

Bedroom 3
2.475m x 3.173m
8'1" x 10'5"

Bedroom 4
2.479m x 2.934m
8'2" x 9'8"

Bathroom
1.958m x 3.173m
6'5" x 10'5"

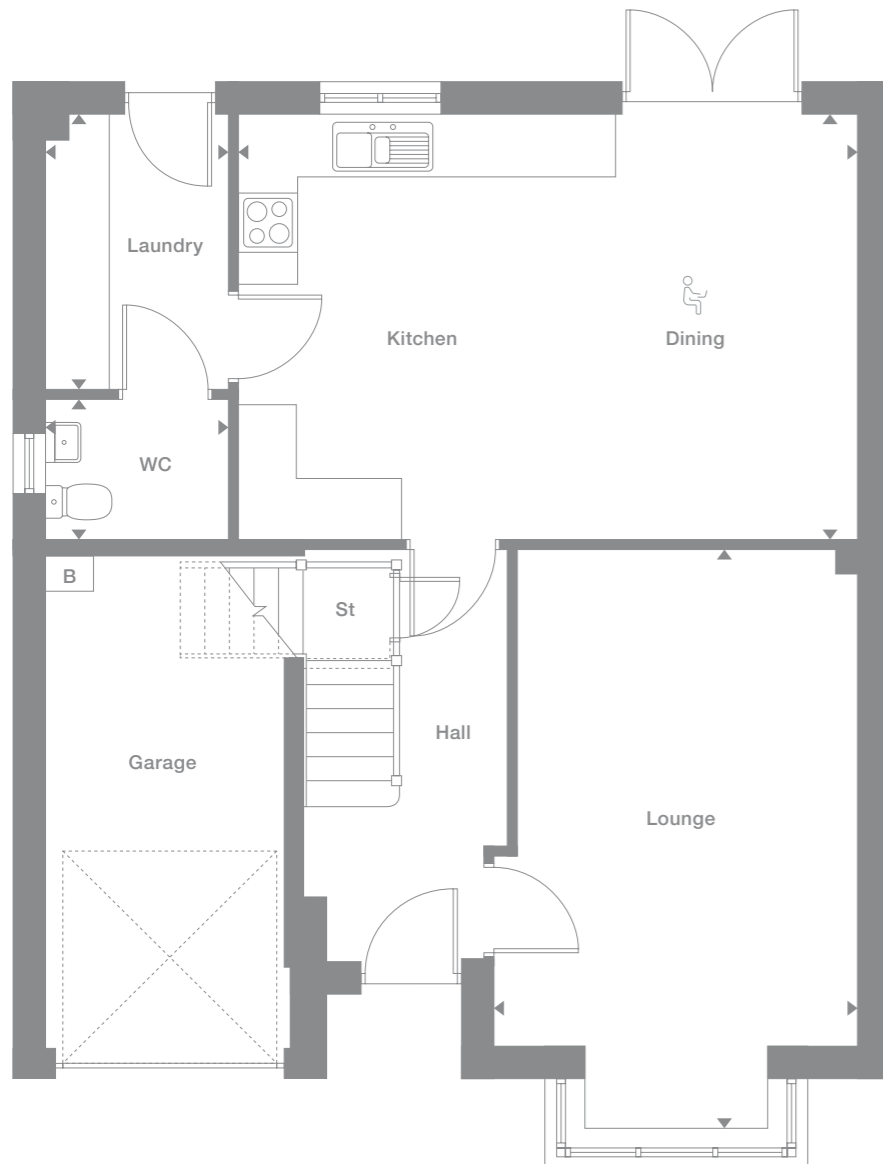
Floor Space

1,446 sq ft

Plots may be a mirror image of the floor plans. Please see Development Sales Manager for details

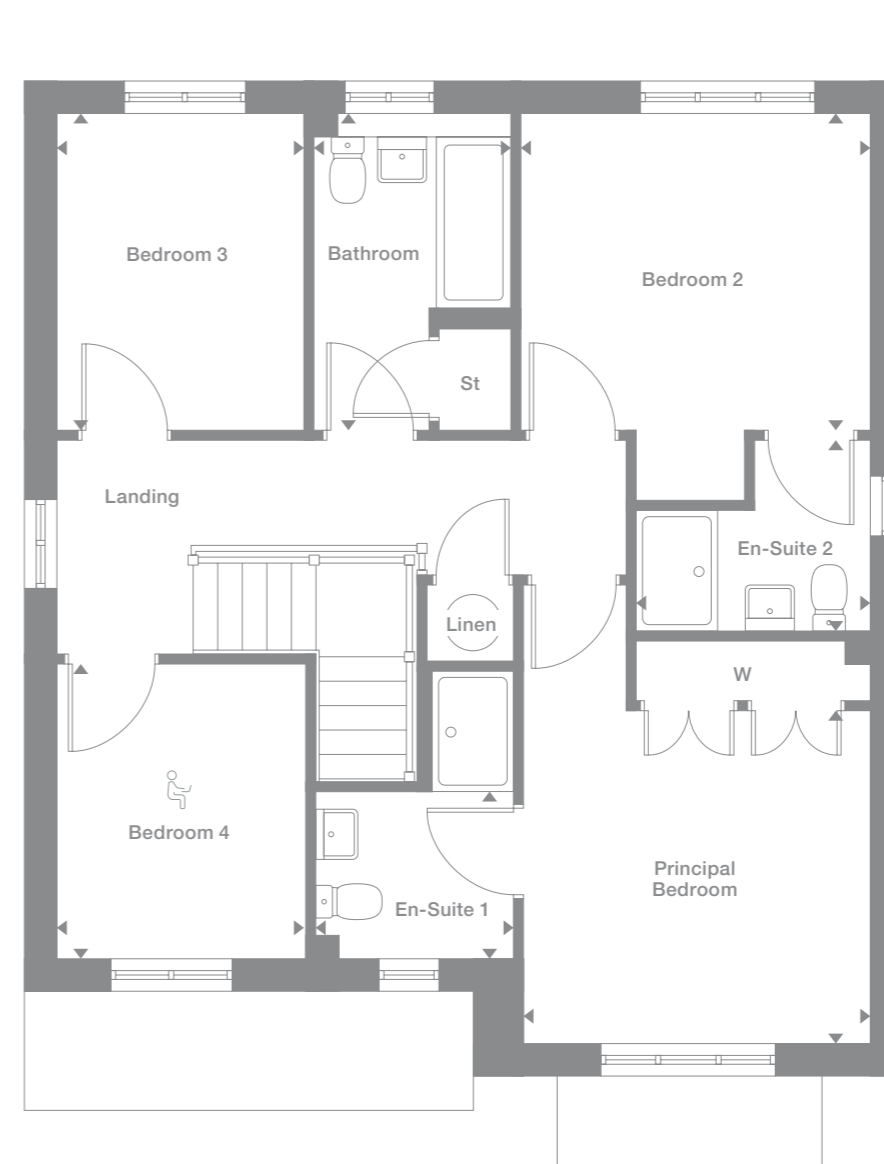


Ground Floor



Stoneyetts Village

First Floor



B = Boiler

Office space area

Photography represents typical Miller Homes' interiors and exteriors. All plans in this brochure are not drawn to scale and are for illustrative purposes only. Consequently, they do not form part of any contract. Room layouts are provisional and may be subject to alteration. Please refer to the 'Important Notice' section at the back of this brochure for more information.

Limewood

Overview

Complementing an elegant lounge with a bay window, and featuring french doors and a separate laundry room, the kitchen and dining room forms a natural hub for family life. To maximise convenience, the private shower room shared by two bedrooms means that three of the four bedrooms have en-suite facilities.

Ground Floor

Lounge
3.656m x 5.272m
12'0" x 17'4"

Kitchen
3.761m x 3.444m
12'4" x 11'4"

Family/Dining
5.140m x 3.444m
16'10" x 11'4"

Laundry
1.634m x 1.961m
5'4" x 6'5"

WC
1.805m x 1.263m
5'11" x 4'2"

First Floor

Principal Bedroom
3.656m x 4.155m
12'0" x 13'8"

En-Suite 1
1.642m x 2.196m
5'5" x 7'2"

Bedroom 2
3.748m x 3.450m
12'4" x 11'4"

Bedroom 3
2.935m x 3.381m
9'8" x 11'1"

Bedroom 4
2.935m x 3.488m
9'8" x 11'5"

En-Suite 2
2.935m x 1.503m
9'8" x 4'11"

Bathroom
2.715m x 1.974m
8'11" x 6'6"

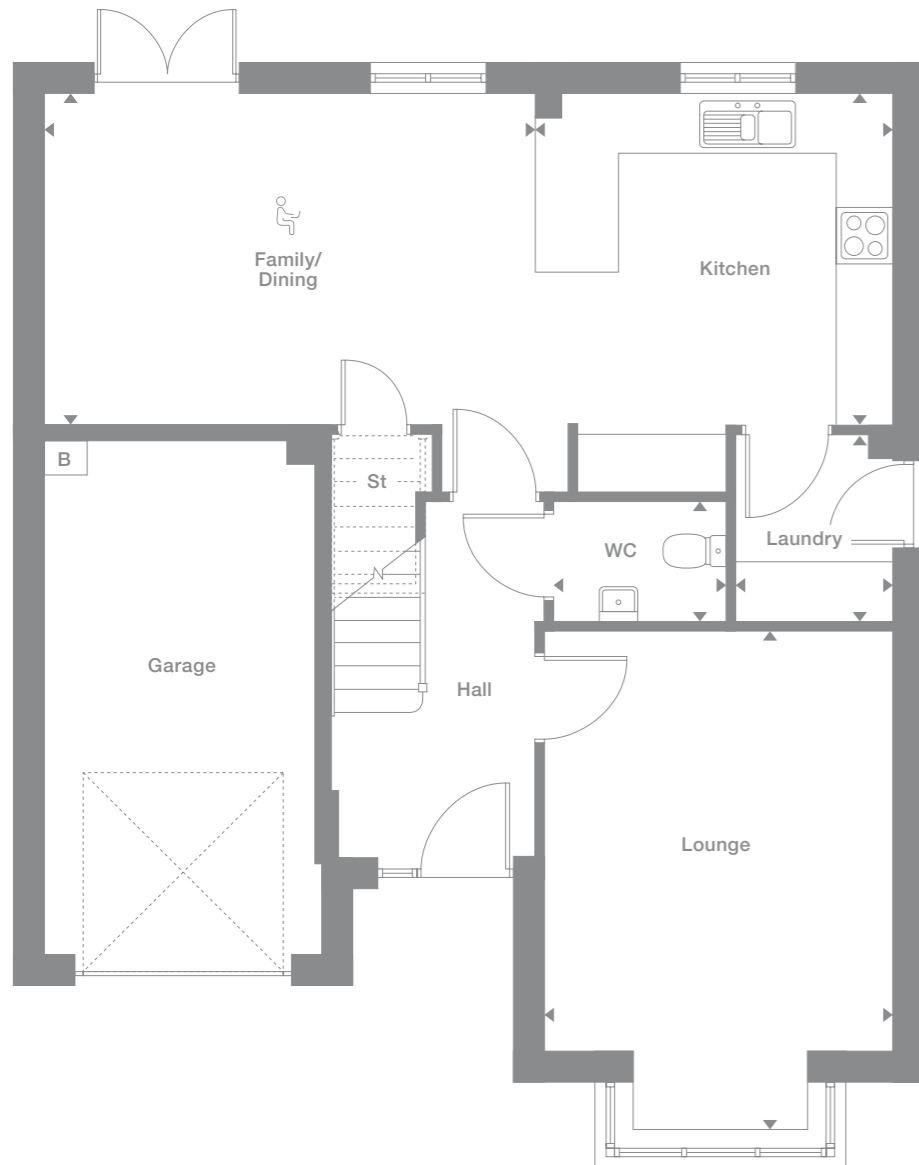
Floor Space

1,558 sq ft

Plots may be a mirror image of the floor plans. Please see Development Sales Manager for details

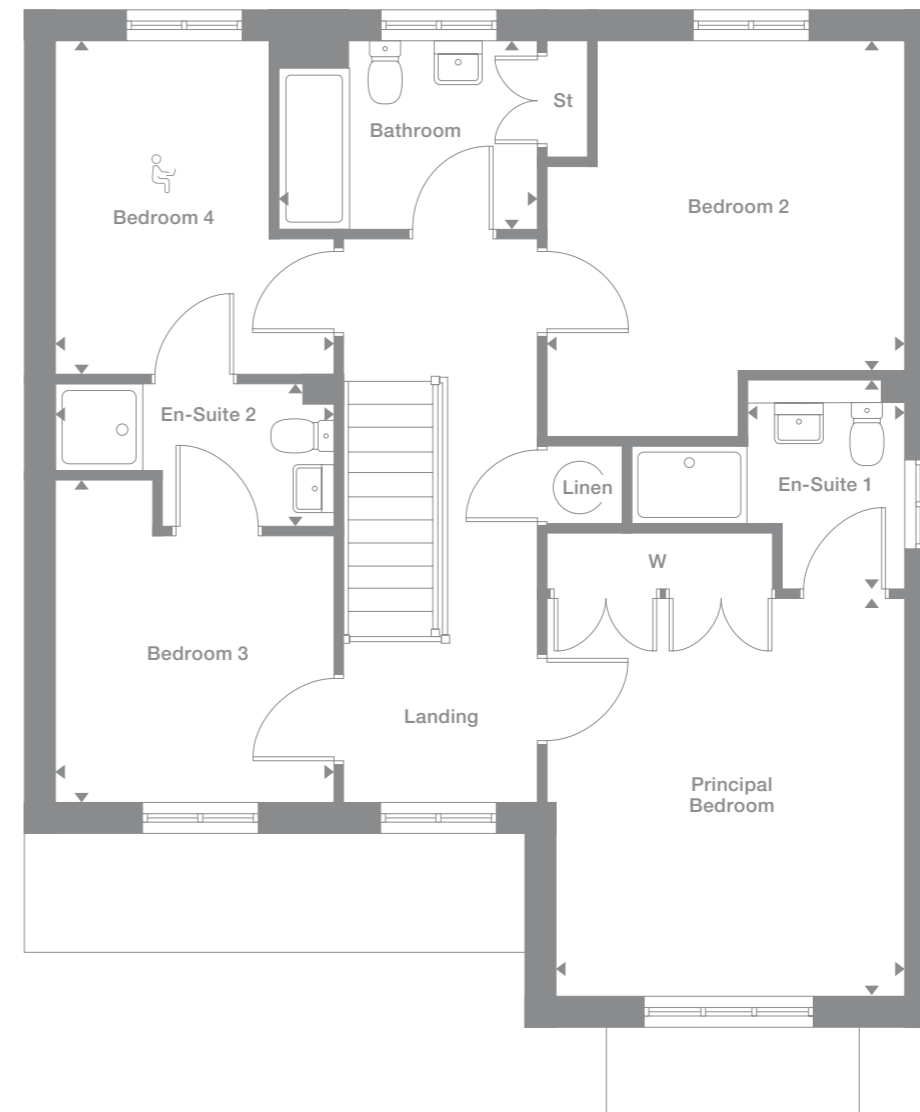


Ground Floor



Stoneyetts Village

First Floor



B = Boiler

Office space area

Photography represents typical Miller Homes' interiors and exteriors. All plans in this brochure are not drawn to scale and are for illustrative purposes only. Consequently, they do not form part of any contract. Room layouts are provisional and may be subject to alteration. Please refer to the 'Important Notice' section at the back of this brochure for more information.

Elmford

Overview

Double doors open to combine the lounge, dining room and kitchen into a single space from bay window to french doors, an unforgettable setting for relaxed social gatherings. With five bedrooms, three of which have en-suite showers, this is a home capable of accommodating the largest family in comfort and privacy.

Ground Floor

Lounge
3.381m x 5.860m
11'1" x 19'3"

Kitchen/Breakfast
8.445m x 2.948m
27'8" x 9'8"

Laundry
2.125m x 1.780m
7'0" x 5'10"

WC
2.125m x 1.068m
7'0" x 3'6"

First Floor

Principal Bedroom
3.381m x 3.544m
11'1" x 11'8"

Dressing
1.646m x 2.013m
5'5" x 6'7"

En-Suite 1
2.326m x 1.210m
7'8" x 4'0"

Bedroom 2
2.537m x 5.173m
8'4" x 17'0"

En-Suite 2
1.845m x 1.995m
6'1" x 6'7"

Bedroom 3
3.381m x 3.128m
11'1" x 10'3"

Bedroom 4
2.806m x 2.986m
9'2" x 9'10"

Bedroom 5
3.105m x 1.995m
10'2" x 6'7"

Bathroom
2.039m x 1.995m
6'8" x 6'7"

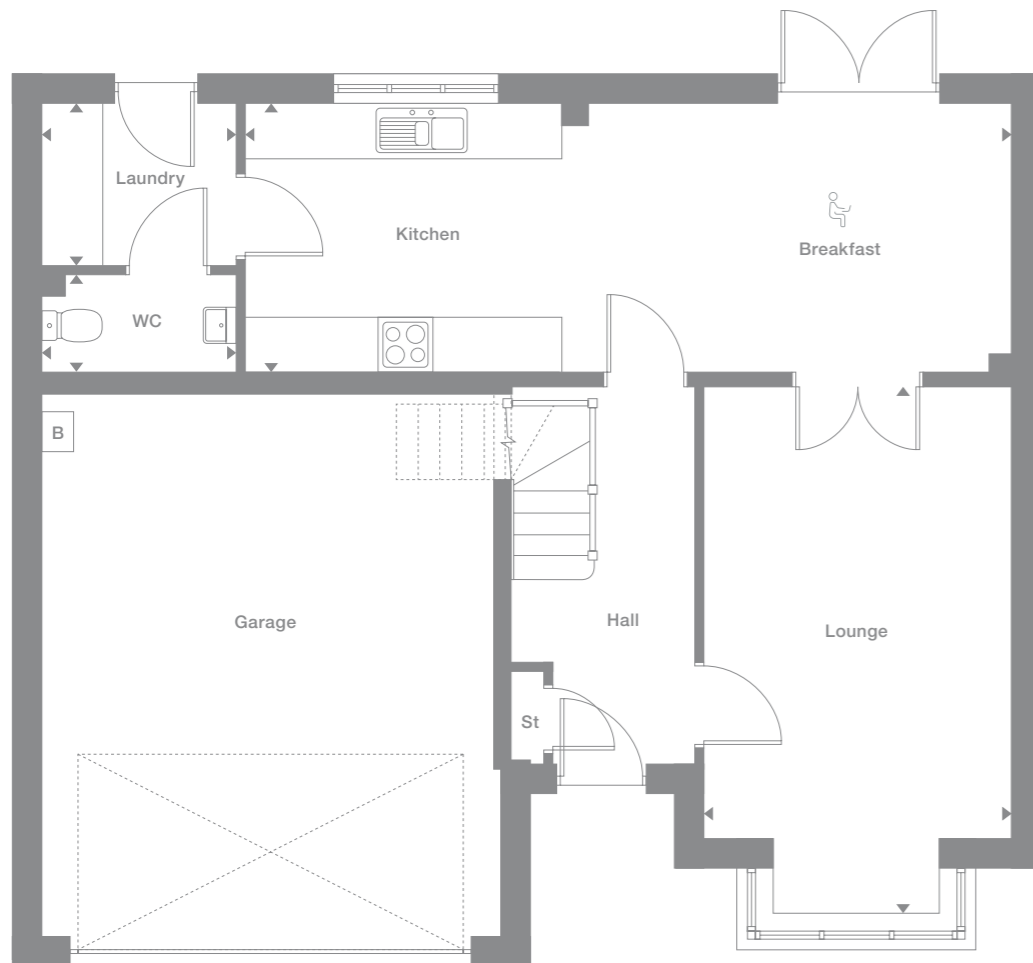
Floor Space

1,510 sq ft

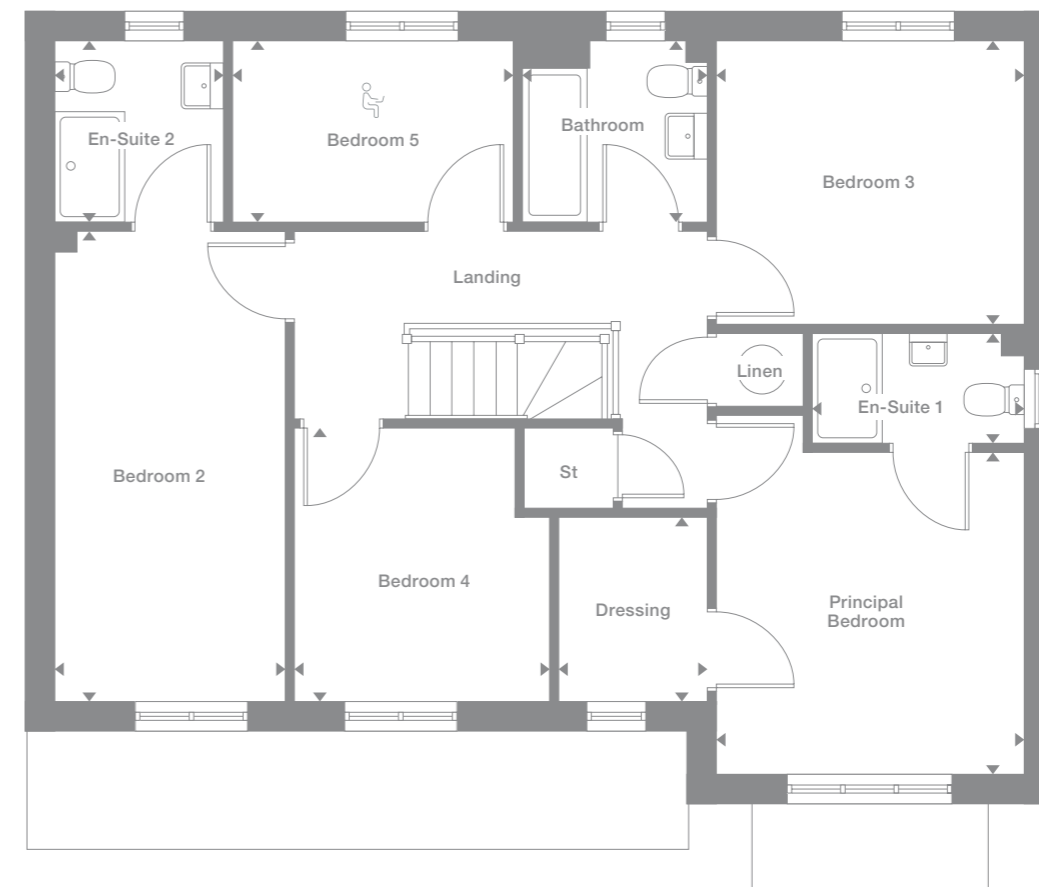
Plots may be a mirror image of the floor plans. Please see Development Sales Manager for details



Ground Floor



First Floor



Office space area

Fulton Alt

Overview

The lounge opens, through a separate lobby, into a beautifully designed kitchen and dining room where french doors keep the room light and airy, and make outdoor meals a tempting option. One of the three bedrooms features an en-suite shower, and there is a useful storage cupboard on the landing.

Ground Floor

Lounge
3.98m x 3.87m
13'1" x 12'8"

Kitchen/Dining
5.05m x 2.99m
16'7" x 9'10"

WC
1.88m x 1.17m
6'2" x 3'10"

First Floor

Principal Bedroom
2.88m x 3.59m
9'6" x 11'10"

En-Suite
2.29m x 1.42m
7'6" x 4'8"

Bedroom 2
2.92m x 2.92m
9'7" x 9'7"

Bedroom 3
2.26m x 2.43m
7'5" x 8'0"

Bathroom
2.10m x 1.70m
6'11" x 5'7"

Floor Space

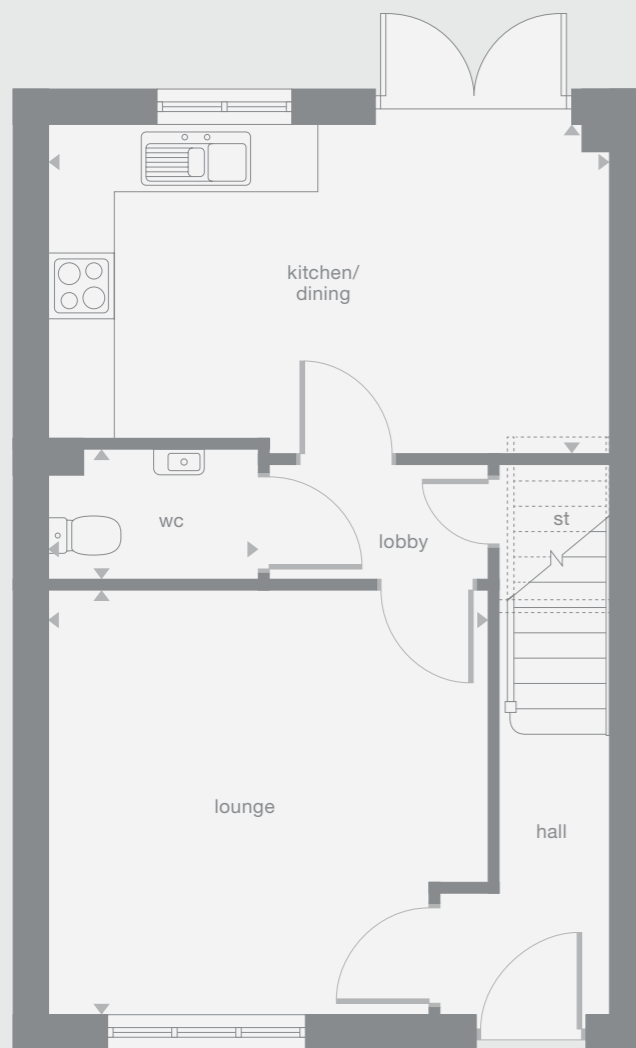
900 sq ft

Plots may be a mirror image of the floor plans. Please see Development Sales Manager for details

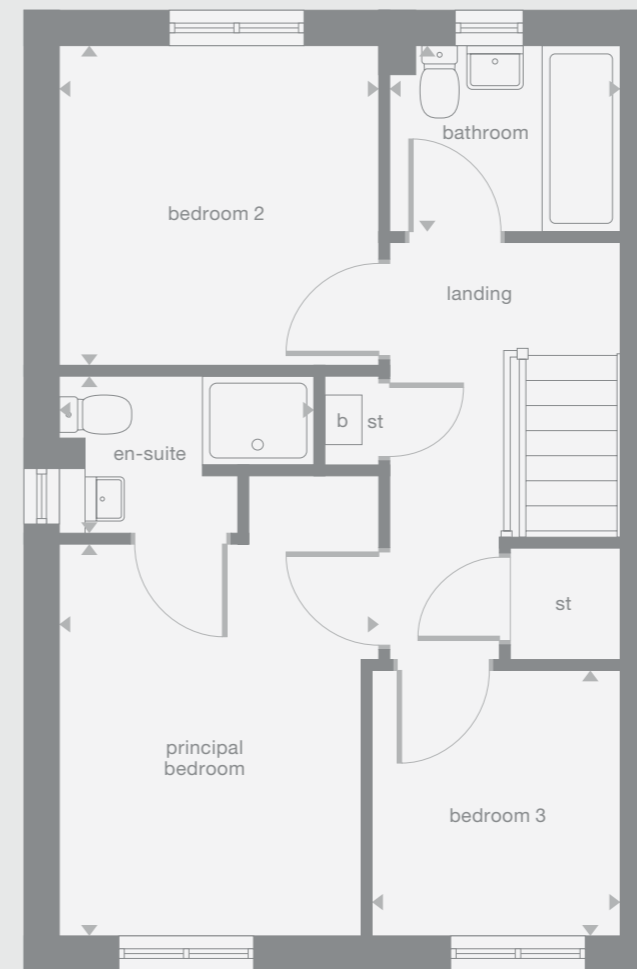
b Boiler



Ground Floor



First Floor



Leawood Alt

Overview

With a separate laundry to prevent household management from encroaching on the social space, and french doors adding a bright focal point, the kitchen provides a natural hub for everyday family life. With four bedrooms, one of them en-suite, there is always an opportunity to find peaceful seclusion.

Ground Floor

Lounge
3.12m x 5.01m
10'3" x 16'5"

Kitchen/Dining
4.79m x 2.93m
15'9" x 9'8"

Laundry
2.01m x 1.74m
6'7" x 5'9"

WC
2.01m x 1.05m
6'7" x 3'5"

First Floor

Principal Bedroom
4.06m x 2.51m
13'4" x 8'3"

En-Suite
1.64m x 2.01m
5'5" x 6'7"

Bedroom 2
2.52m x 3.96m
8'3" x 13'0"

Bedroom 3
2.32m x 3.34m
7'7" x 11'0"

Bedroom 4
2.32m x 3.34m
7'7" x 11'0"

Bathroom
2.07m x 2.20m
6'10" x 7'3"

Floor Space

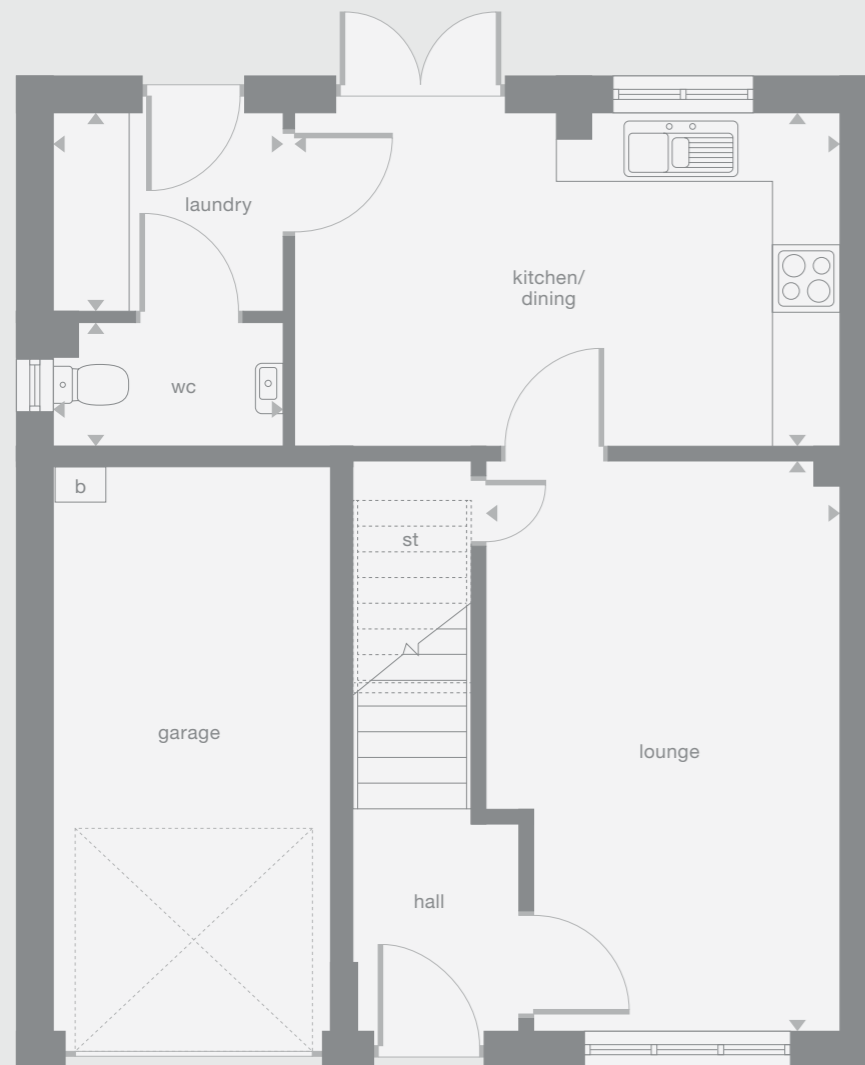
1,036 sq ft

Plots may be a mirror image of the floor plans. Please see Development Sales Manager for details

b Boiler

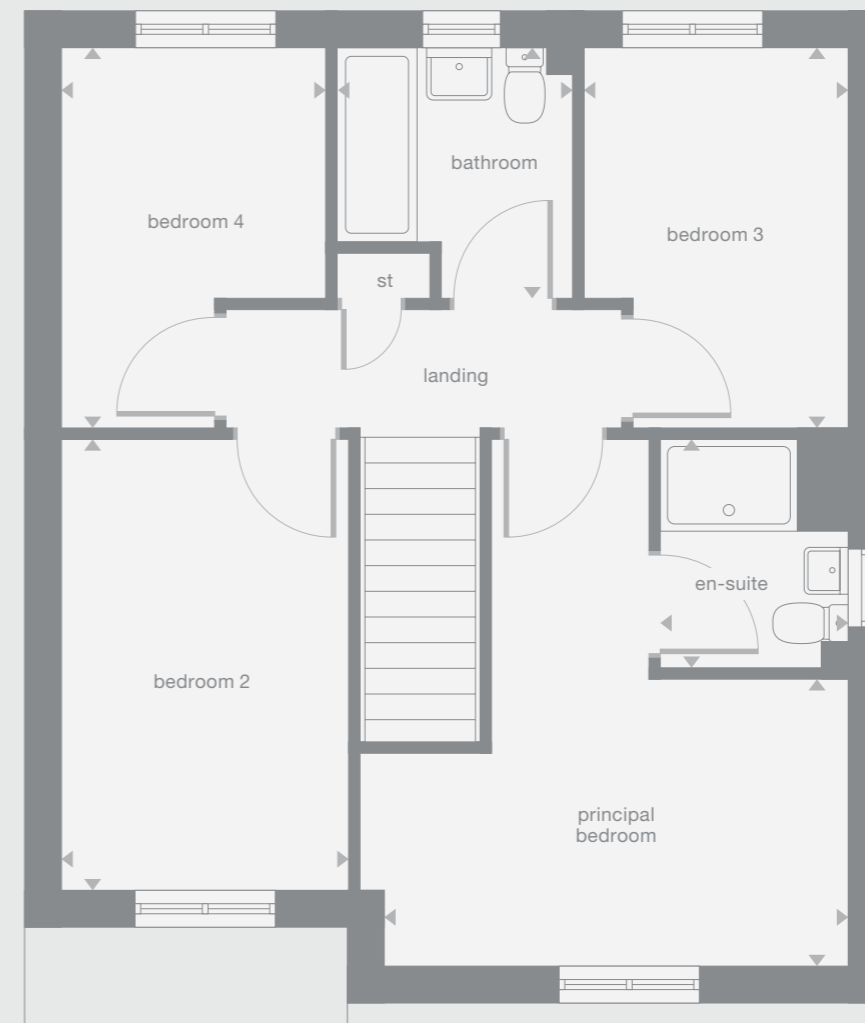


Ground Floor



Stoneyetts

First Floor



Photography represents typical Miller Homes' interiors and exteriors. All plans in this brochure are not drawn to scale and are for illustrative purposes only. Consequently, they do not form part of any contract. Room layouts are provisional and may be subject to alteration. Please refer to the 'Important Notice' section at the back of this brochure for more information.

Larchwood Alt

Overview

French doors add a focal point to the living and dining room, while the adjoining kitchen keeps cooking and household management separate from the social space without any loss of convenience. The principal bedroom incorporates an en-suite shower, and the fourth bedroom could become a useful home office.

Ground Floor

Living/Dining
3.49m x 6.36m
11'6" x 20'10"

Kitchen
2.60m x 3.44m
8'7" x 11'4"

WC
1.98m x 1.12m
6'6" x 3'8"

First Floor

Principal Bedroom
3.10m x 4.41m
10'2" x 14'6"

En-Suite
2.27m x 1.25m
7'6" x 4'1"

Bedroom 2
3.01m x 3.43m
9'11" x 11'3"

Bedroom 3
2.60m x 3.25m
8'7" x 10'8"

Bedroom 4
2.39m x 2.98m
7'10" x 9'10"

Bathroom
1.88m x 2.16m
6'2" x 7'1"

Floor Space

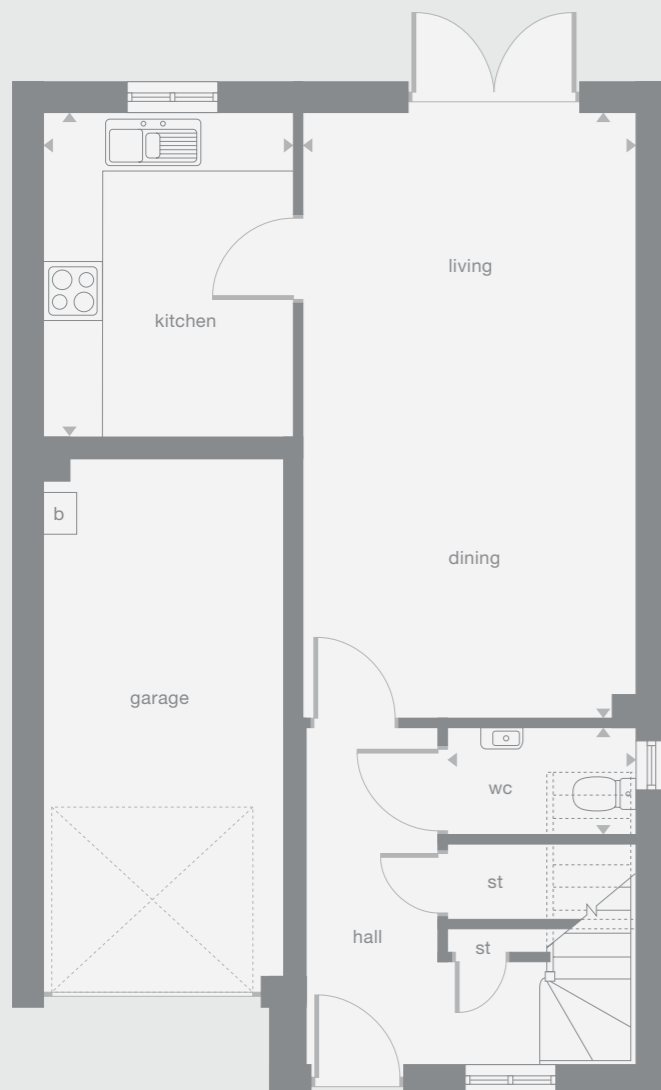
1,119 sq ft

Plots may be a mirror image of the floor plans. Please see Development Sales Manager for details

b Boiler

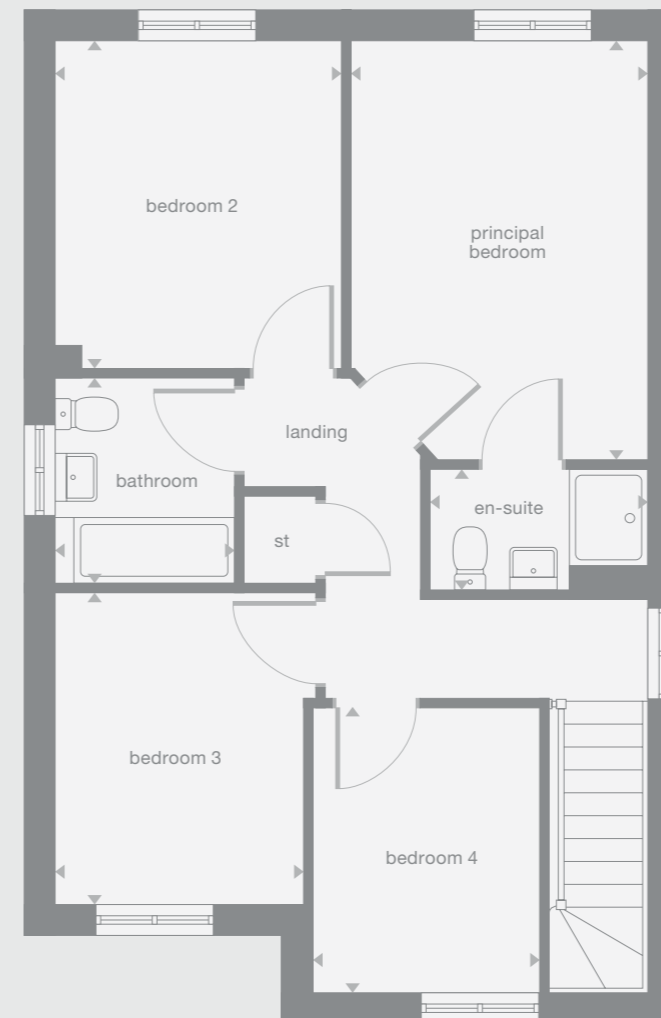


Ground Floor



Stoneyetts

First Floor



Photography represents typical Miller Homes' interiors and exteriors. All plans in this brochure are not drawn to scale and are for illustrative purposes only. Consequently, they do not form part of any contract. Room layouts are provisional and may be subject to alteration. Please refer to the 'Important Notice' section at the back of this brochure for more information.

Hazelwood Alt

Overview

The lounge opens on to a light-filled family kitchen, a beautifully designed space with feature french doors adding extra appeal to the dining area. With a separate laundry, a useful cupboard in the fourth bedroom and an en-suite principal bedroom, this is a practical, attractive home.

Ground Floor

Lounge
3.31m x 4.92m
10'11" x 16'2"

Kitchen/Dining
5.39m x 3.18m
17'9" x 10'6"

Laundry
2.06m x 1.95m
6'9" x 6'5"

WC
2.06m x 1.08m
6'9" x 3'7"

First Floor

Principal Bedroom
4.38m x 2.89m
14'5" x 9'6"

En-Suite
2.06m x 2.54m
6'9" x 8'4"

Bedroom 2
3.73m x 2.60m
12'3" x 8'7"

Bedroom 3
3.73m x 2.60m
12'3" x 8'7"

Bedroom 4
3.05m x 2.64m
10'0" x 8'8"

Bathroom
1.92m x 2.22m
6'4" x 7'4"

Floor Space

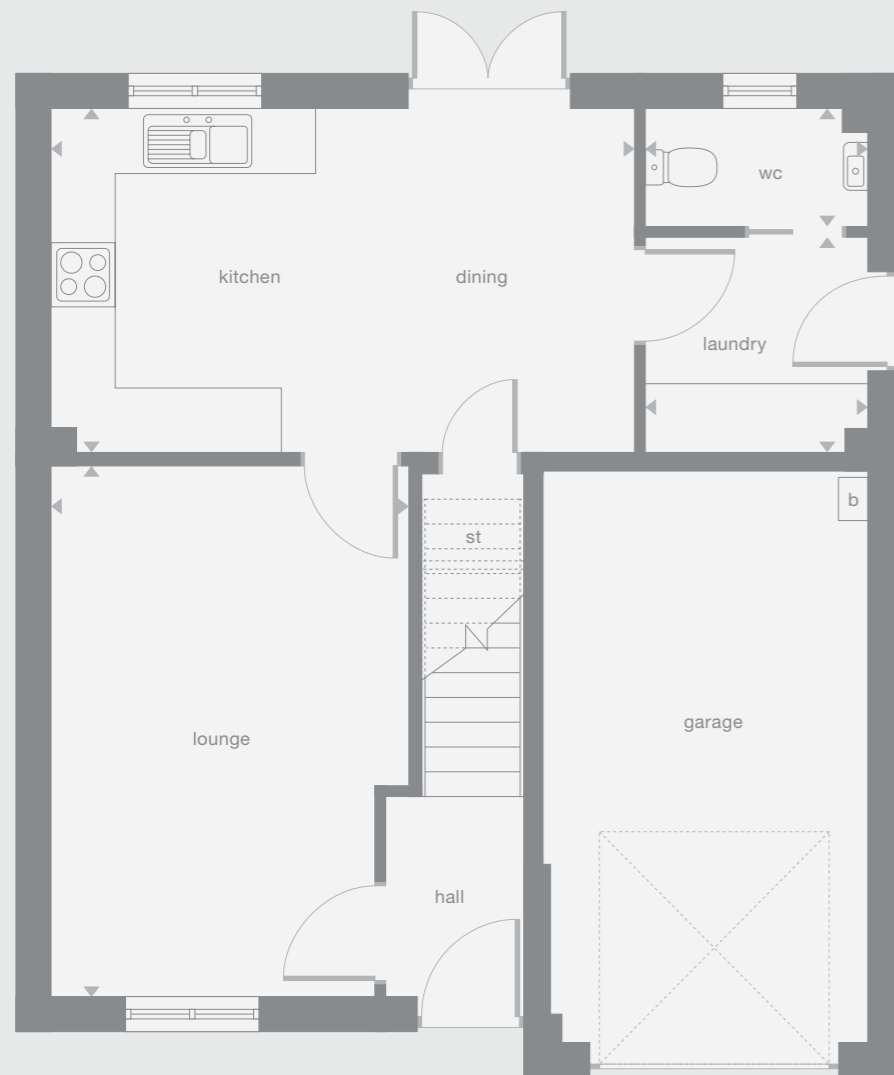
1,150 sq ft

Plots may be a mirror image of the floor plans. Please see Development Sales Manager for details

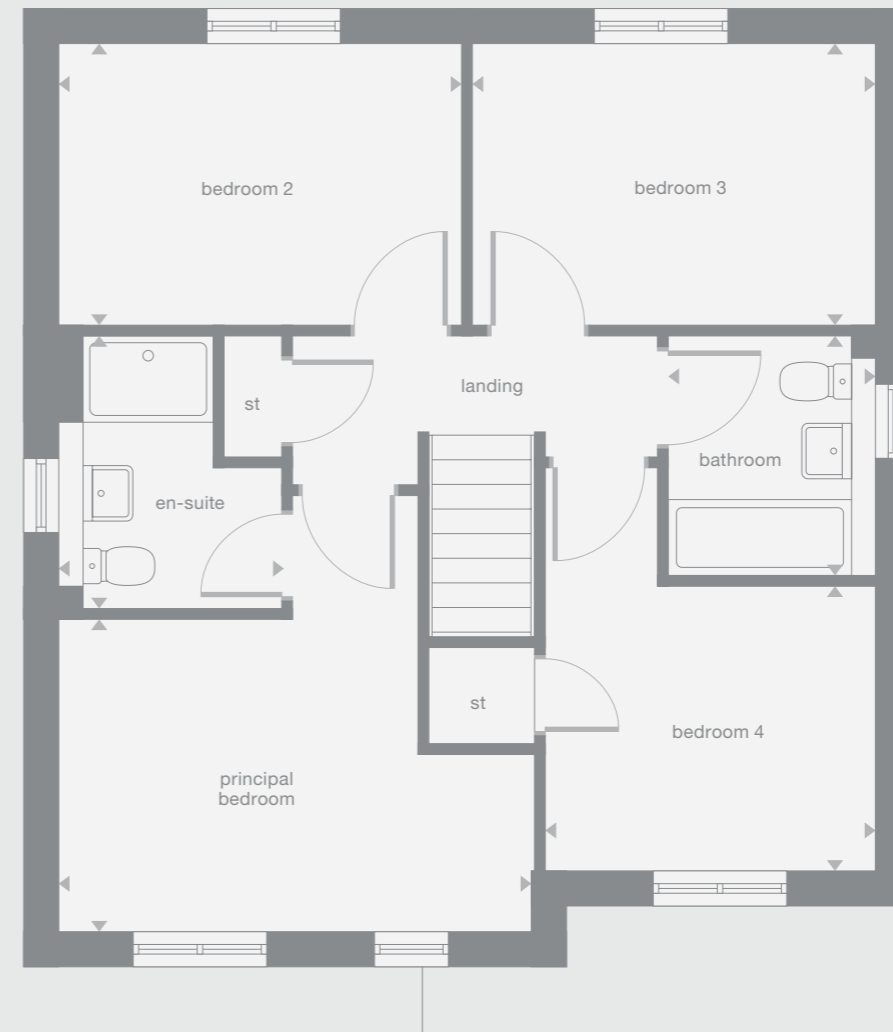
b Boiler



Ground Floor



First Floor



Maplewood Alt

Overview

With twin windows and central french doors, the kitchen and dining room maximises the benefits of the garden to present an adaptable, comfortable setting for family life. The lounge features a stylish bay window, and the delightful principal bedroom includes an en-suite shower and a sumptuous dressing area.

Ground Floor

Lounge
3.00m x 4.72m
9'10" x 15'6"

Family/Dining/Kitchen
8.14m x 2.80m
26'9" x 9'2"

Laundry
1.77m x 1.28m
5'10" x 4'3"

WC
1.46m x 1.77m
4'10" x 5'10"

First Floor

Principal Bedroom
5.01m x 2.80m
16'6" x 9'2"

En-Suite
2.63m x 1.23m
8'8" x 4'0"

Dressing
2.63m x 1.38m
8'8" x 4'7"

Bedroom 2
3.02m x 4.01m
9'11" x 13'2"

Bedroom 3
2.43m x 4.22m
8'0" x 13'10"

Bedroom 4
3.06m x 3.00m
10'1" x 9'10"

Bathroom
2.44m x 3.00m
8'0" x 9'10"

Floor Space

1,297 sq ft

Plots may be a mirror image of the floor plans. Please see Development Sales Manager for details

b Boiler

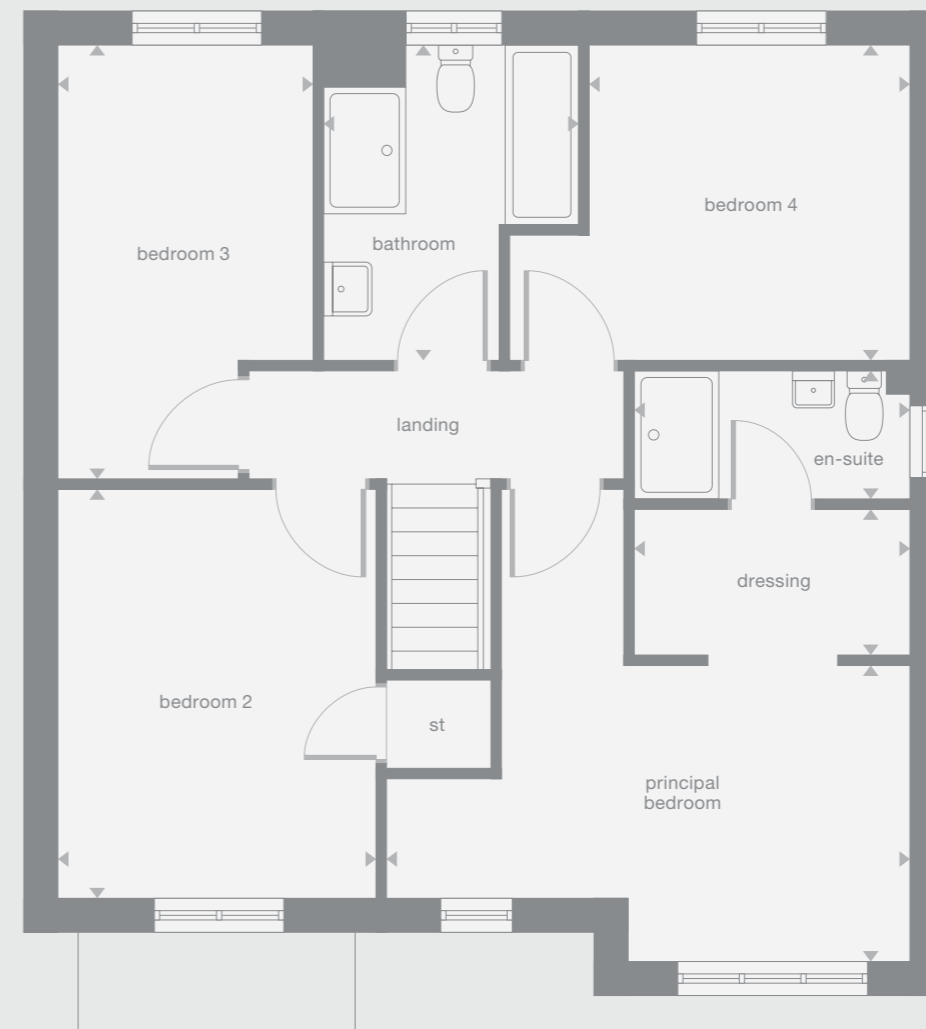


Ground Floor



Stoneyetts

First Floor



Photography represents typical Miller Homes' interiors and exteriors. All plans in this brochure are not drawn to scale and are for illustrative purposes only. Consequently, they do not form part of any contract. Room layouts are provisional and may be subject to alteration. Please refer to the 'Important Notice' section at the back of this brochure for more information.

Langwood Alt

Overview

A bay window and double doors give the lounge a classic elegance that complements the bright, relaxed family kitchen and dining room with its feature french doors. There is a separate laundry room and a study, and the four bedrooms include a luxurious L-shaped en-suite principal bedroom.

Ground Floor

Lounge
3.04m x 5.51m
10'0" x 18'1"

Kitchen/Dining/Family
7.97m x 3.01m
26'2" x 9'11"

Laundry
1.64m x 1.71m
5'5" x 5'7"

Study
2.65m x 2.33m
8'9" x 7'8"

WC
2.65m x 1.24m
8'9" x 4'1"

First Floor

Principal Bedroom
5.30m x 2.96m
17'5" x 9'9"

Bedroom 4
2.51m x 2.38m
8'3" x 7'10"

Bathroom
2.69m x 1.91m
8'10" x 6'3"

En-Suite
1.52m x 2.20m
5'0" x 7'3"

Dressing
1.44m x 1.49m
4'9" x 4'11"

Bedroom 2
2.56m x 3.85m
8'5" x 12'8"

Bedroom 3
2.56m x 3.79m
8'5" x 12'5"

Floor Space
1,349 sq ft

Plots may be a mirror image of the floor plans. Please see Development Sales Manager for details

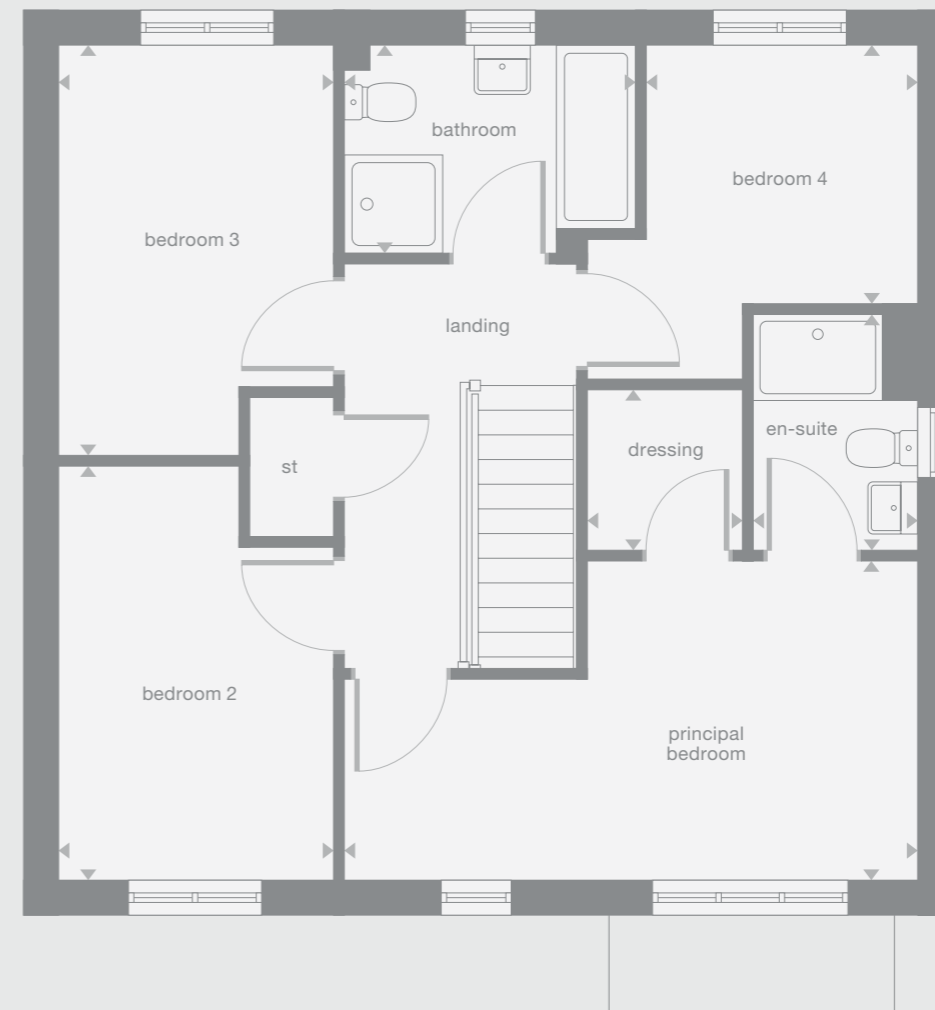
b Boiler



Ground Floor



First Floor



Oakwood Alt

Overview

From the bay window in the lounge to the superb family kitchen with garden access, from the gallery landing to the en-suite principal bedroom, this is a home filled with premium features. The study provides a peaceful retreat for working from home or creating a computer room.

Ground Floor

Lounge
3.56m x 5.47m
11'8" x 17'11"

Kitchen/Family/Dining
7.14m x 3.80m
23'5" x 12'6"

Study
2.05m x 2.36m
6'9" x 7'9"

Laundry
2.05m x 1.73m
6'9" x 5'8"

WC
2.06m x 1.12m
6'9" x 3'8"

First Floor

Principal Bedroom
3.65m x 3.05m
12'0" x 10'0"

En-Suite
2.35m x 1.44m
7'9" x 4'9"

Bedroom 2
3.79m x 2.75m
12'5" x 9'0"

Bedroom 3
3.25m x 2.75m
10'8" x 9'0"

Bedroom 4
3.39m x 3.17m
11'2" x 10'5"

Bathroom
2.61m x 2.00m
8'7" x 6'7"

Floor Space

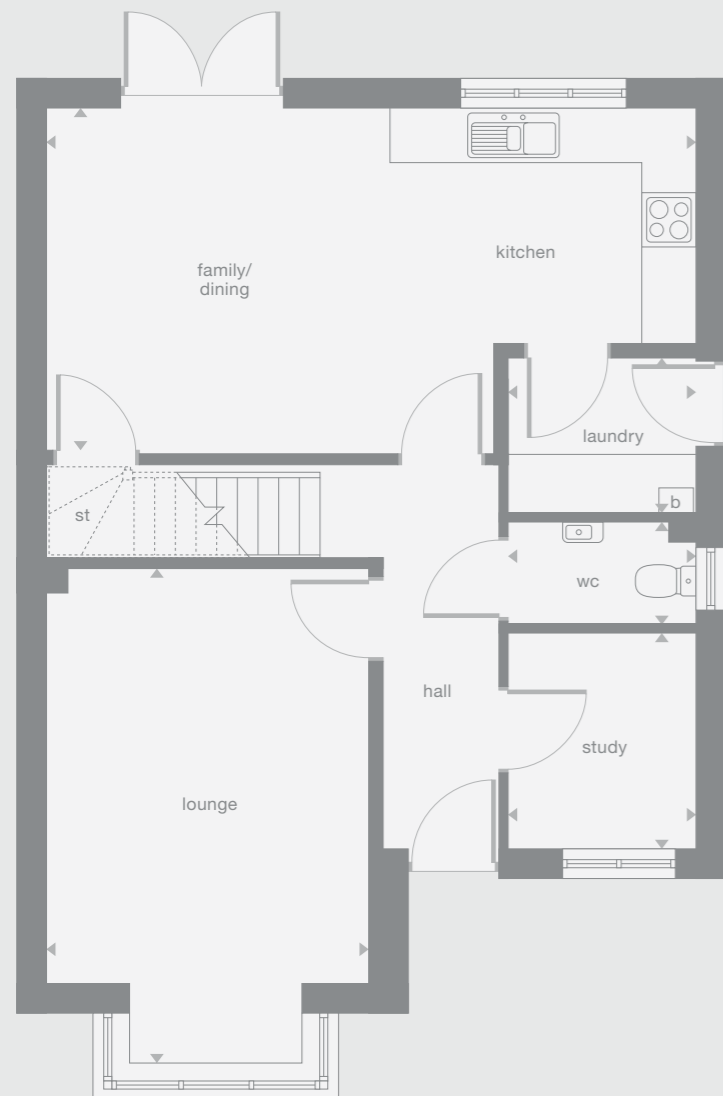
1,388 sq ft

Plots may be a mirror image of the floor plans. Please see Development Sales Manager for details

b Boiler

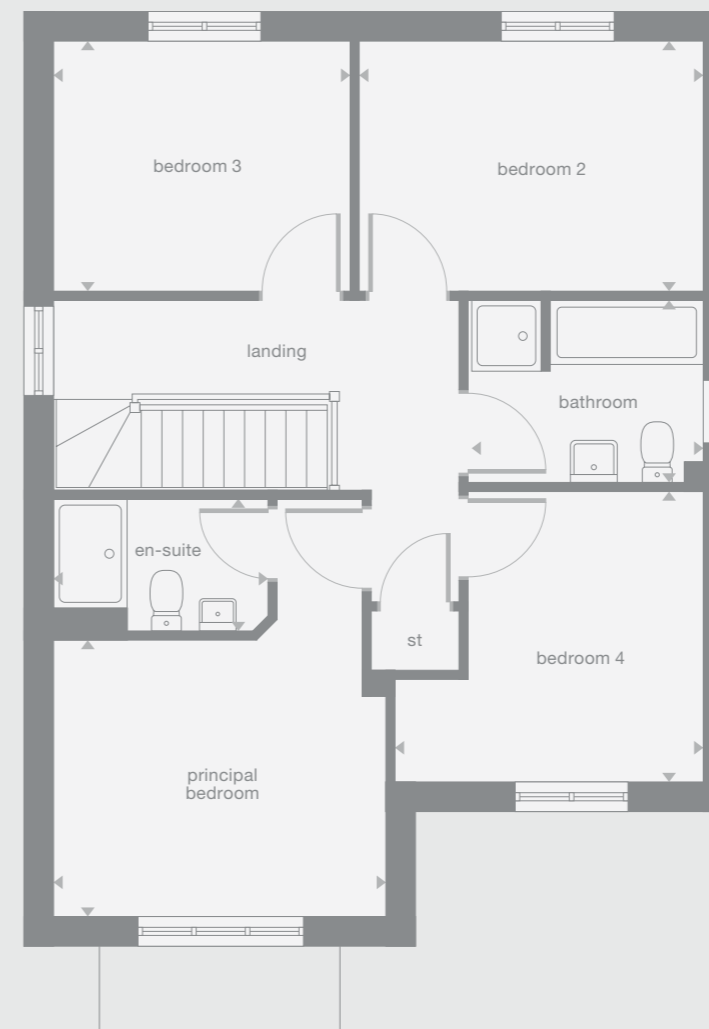


Ground Floor



Stoneyetts

First Floor



Photography represents typical Miller Homes' interiors and exteriors. All plans in this brochure are not drawn to scale and are for illustrative purposes only. Consequently, they do not form part of any contract. Room layouts are provisional and may be subject to alteration. Please refer to the 'Important Notice' section at the back of this brochure for more information.

Hartwood Alt

Overview

Behind the attractive bay window and canopied entrance, this comfortable, exciting home features a lounge that opens through to a family dining space extending into a practical, expertly planned kitchen, while french doors keep the whole space light and fresh. Upstairs, a shared shower room provides three of the four bedrooms with en-suite facilities.

Ground Floor

Lounge
3.29m x 5.71m
10'10" x 18'9"

**Kitchen/
Breakfast/Family**
8.20m x 3.25m
26'11" x 10'8"

WC
1.83m x 1.28m
6'0" x 4'3"

First Floor

Principal Bedroom
4.00m x 4.15m
13'2" x 13'7"

En-Suite 1
2.10m x 1.69m
6'11" x 5'7"

Bedroom 2
4.09m x 3.07m
13'5" x 10'1"

En-Suite 2
1.71m x 1.85m
5'7" x 6'1"

Bedroom 3
3.28m x 3.17m
10'9" x 10'5"

Bedroom 4
2.52m x 3.42m
8'3" x 11'3"

Bathroom
2.19m x 2.28m
7'3" x 7'6"

Floor Space

1,424 sq ft

Plots may be a mirror image of the floor plans. Please see Development Sales Manager for details

b Boiler



Ground Floor



Stoneyetts

First Floor



Photography represents typical Miller Homes' interiors and exteriors. All plans in this brochure are not drawn to scale and are for illustrative purposes only. Consequently, they do not form part of any contract. Room layouts are provisional and may be subject to alteration. Please refer to the 'Important Notice' section at the back of this brochure for more information.

Lockwood Alt

Overview

The elegantly proportioned exterior reflects the immense prestige of this exceptional family home. From the lounge's bay window to the feature staircase with half landing, from the french doors of the dining room to the en-suite showers in two of the four bedrooms, comfort is combined with visual appeal.

Ground Floor

Lounge
3.63m x 5.85m
11'11" x 19'3"

Kitchen/Dining/Family
6.20m x 4.22m
20'4" x 13'10"

Laundry
1.81m x 2.73m
6'0" x 9'0"

WC
1.81m x 1.38m
6'0" x 4'7"

First Floor

Principal bedroom
3.46m x 4.01m
11'4" x 13'2"

En-Suite 1
1.98m x 1.67m
6'6" x 5'6"

Bedroom 2
3.49m x 3.17m
11'5" x 10'5"

En-Suite 2
2.33m x 1.91m
7'8" x 6'3"

Bedroom 3
2.47m x 3.17m
8'1" x 10'5"

Bedroom 4
2.47m x 2.93m
8'2" x 9'8"

Bathroom
1.95m x 3.17m
6'5" x 10'5"

Floor Space

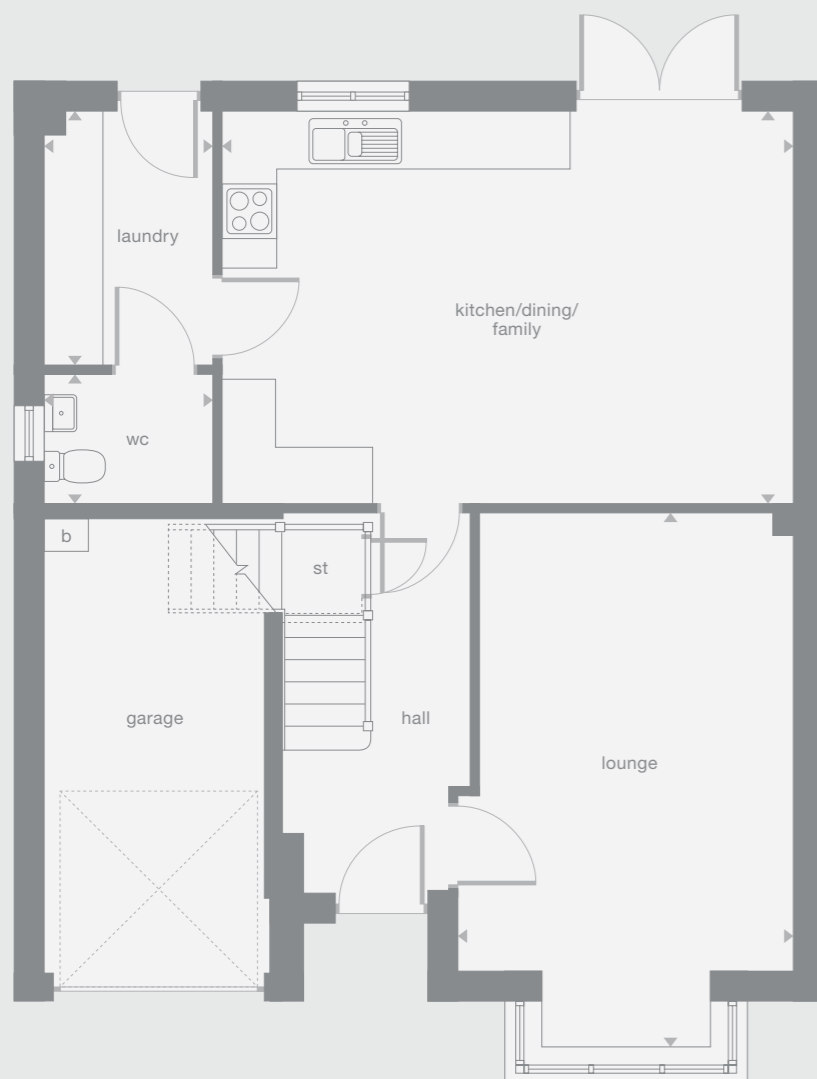
1,446 sq ft

Plots may be a mirror image of the floor plans. Please see Development Sales Manager for details

b Boiler

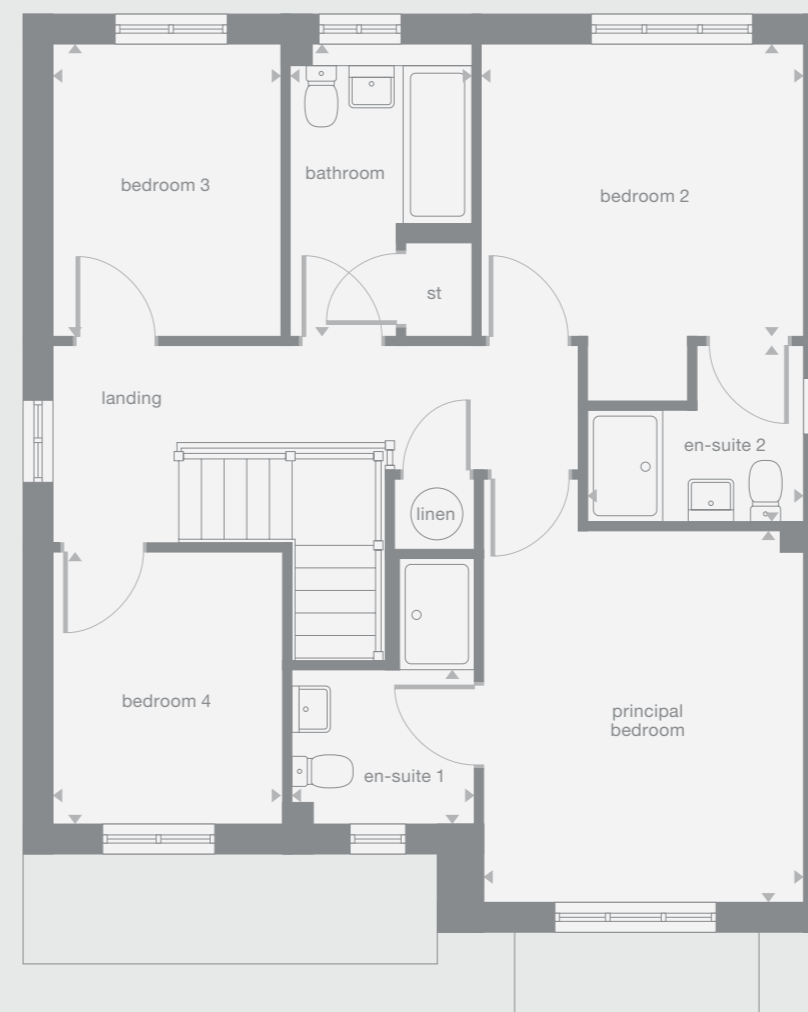


Ground Floor



Stoneyetts

First Floor



Photography represents typical Miller Homes' interiors and exteriors. All plans in this brochure are not drawn to scale and are for illustrative purposes only. Consequently, they do not form part of any contract. Room layouts are provisional and may be subject to alteration. Please refer to the 'Important Notice' section at the back of this brochure for more information.

Limewood Alt

Overview

Complementing an elegant lounge with a bay window, and featuring french doors and a separate laundry room, the kitchen and dining room forms a natural hub for family life. To maximise convenience, the private shower room shared by two bedrooms means that three of the four bedrooms have en-suite facilities.

Ground Floor

Lounge
3.65m x 5.27m
12'0" x 17'4"

Kitchen
3.76m x 3.44m
12'4" x 11'4"

Family/Dining
5.140m x 3.444m
16'10" x 11'4"

Laundry
1.63m x 1.96m
5'4" x 6'5"

WC
1.80m x 1.26m
5'11" x 4'2"

First Floor

Principal Bedroom
3.65m x 4.15m
12'0" x 13'8"

En-Suite 1
1.64m x 2.19m
5'5" x 7'2"

Bedroom 2
3.74m x 3.45m
12'4" x 11'4"

Bedroom 3
2.93m x 3.38m
9'8" x 11'1"

Bedroom 4
2.93m x 3.48m
9'8" x 11'5"

En-Suite 2
2.93m x 1.50m
9'8" x 4'11"

Bathroom
2.71m x 1.97m
8'11" x 6'6"

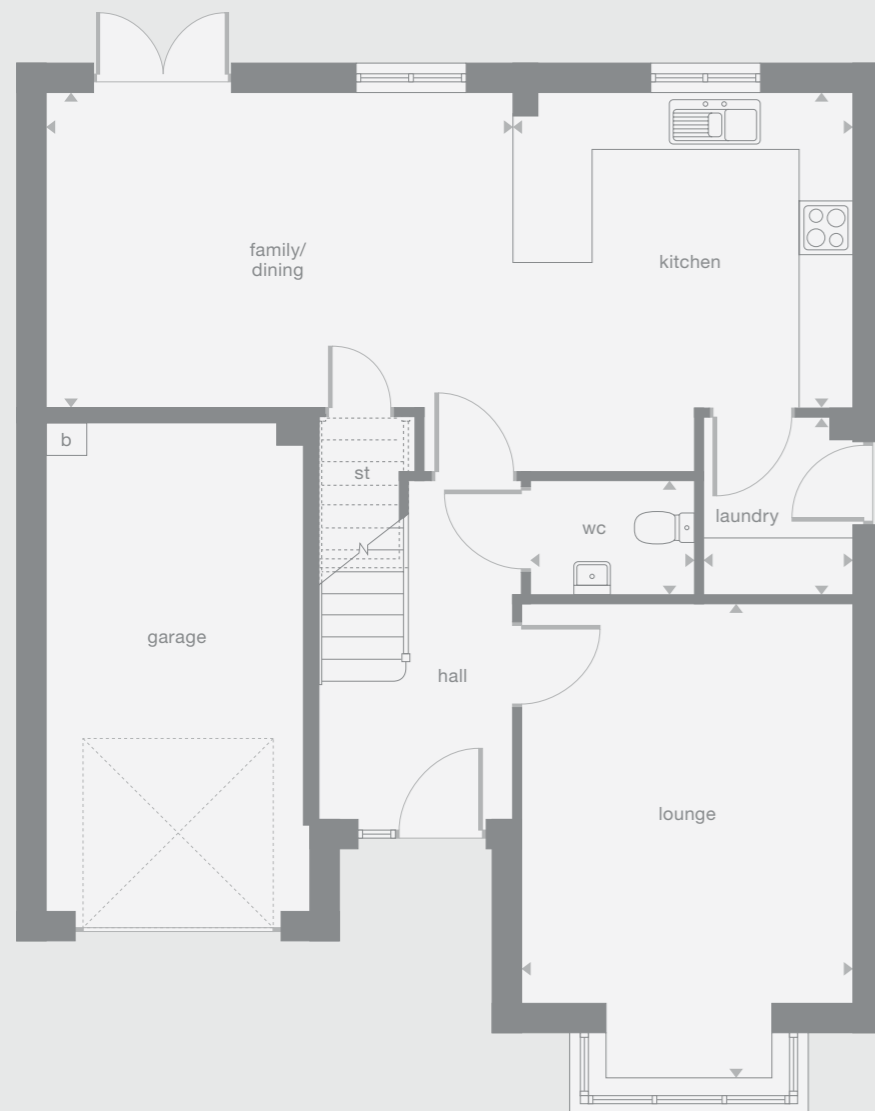
Floor Space
1,558 sq ft

Plots may be a mirror image of the floor plans. Please see Development Sales Manager for details

b Boiler

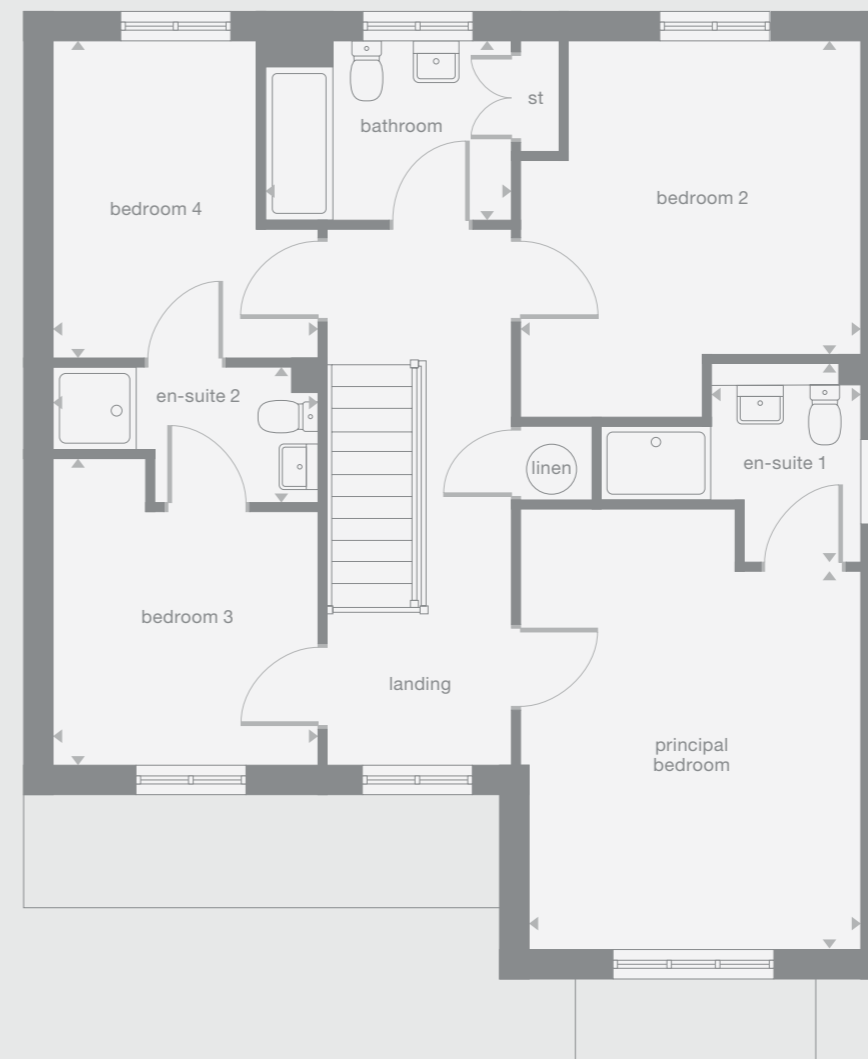


Ground Floor



Stoneyetts

First Floor



Photography represents typical Miller Homes' interiors and exteriors. All plans in this brochure are not drawn to scale and are for illustrative purposes only. Consequently, they do not form part of any contract. Room layouts are provisional and may be subject to alteration. Please refer to the 'Important Notice' section at the back of this brochure for more information.

Elmford Alt

Overview

Double doors open to combine the lounge, dining room and kitchen into a single space from bay window to french doors, an unforgettable setting for relaxed social gatherings. With five bedrooms, two of which have en-suite showers, this is a home capable of accommodating the largest family in comfort and privacy.

Ground Floor

Lounge
3.38m x 5.86m
11'1" x 19'3"

Kitchen/Breakfast
8.44m x 2.94m
27'8" x 9'8"

Laundry
2.12m x 1.78m
7'0" x 5'10"

WC
2.12m x 1.06m
7'0" x 3'6"

First Floor

Principal Bedroom
3.38m x 3.54m
11'1" x 11'8"

Dressing
1.64m x 2.01m
5'5" x 6'7"

En-Suite 1
2.32m x 1.21m
7'8" x 4'0"

Bedroom 2
2.53m x 5.17m
8'4" x 17'0"

En-Suite 2
1.84m x 1.99m
6'1" x 6'7"

Bedroom 3
3.38m x 3.12m
11'1" x 10'3"

Bedroom 4
2.80m x 2.98m
9'2" x 9'10"

Bedroom 5
3.10m x 1.99m
10'2" x 6'7"

Bathroom
2.03m x 1.99m
6'8" x 6'7"

Floor Space

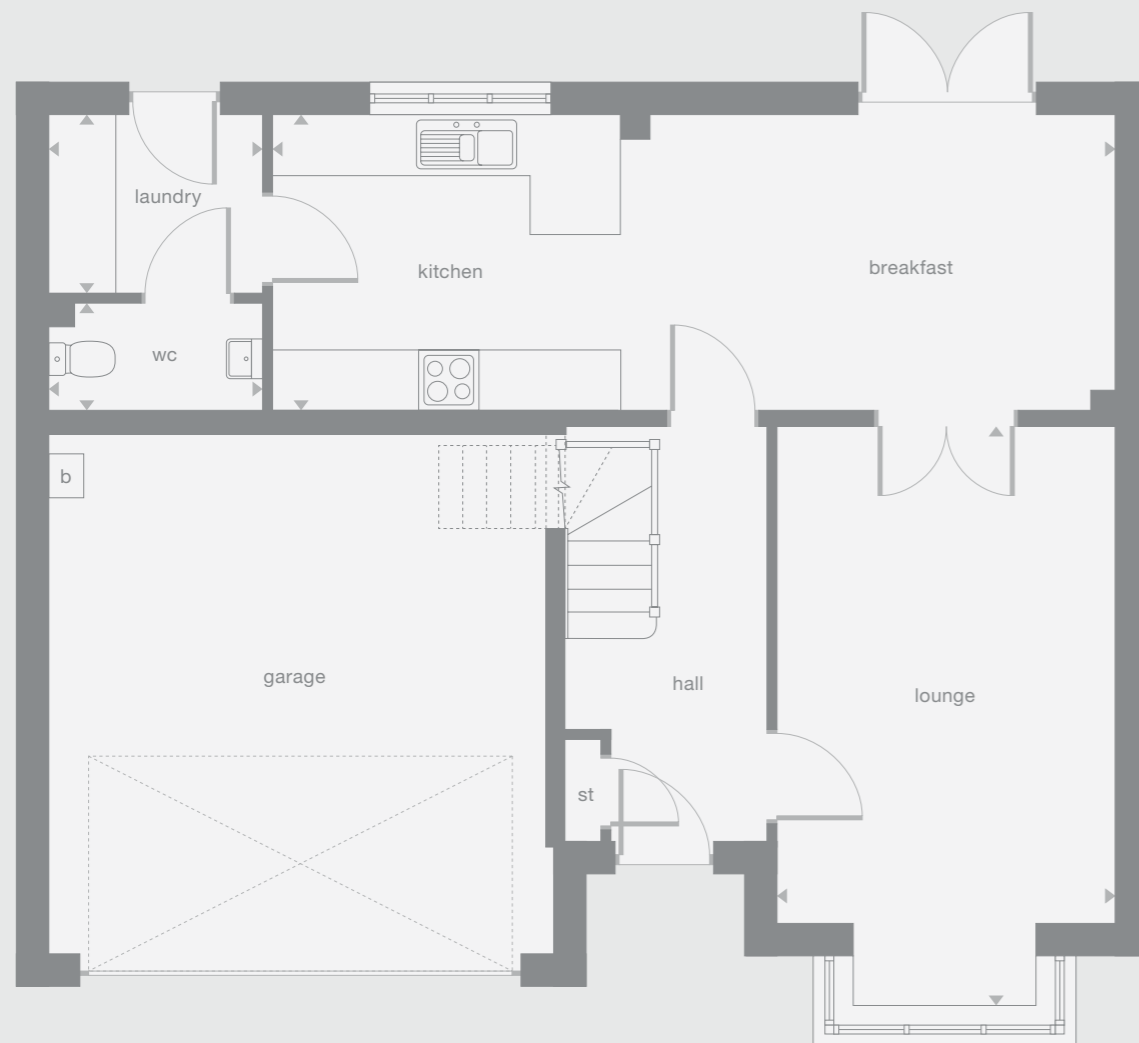
1,510 sq ft

Plots may be a mirror image of the floor plans. Please see Development Sales Manager for details

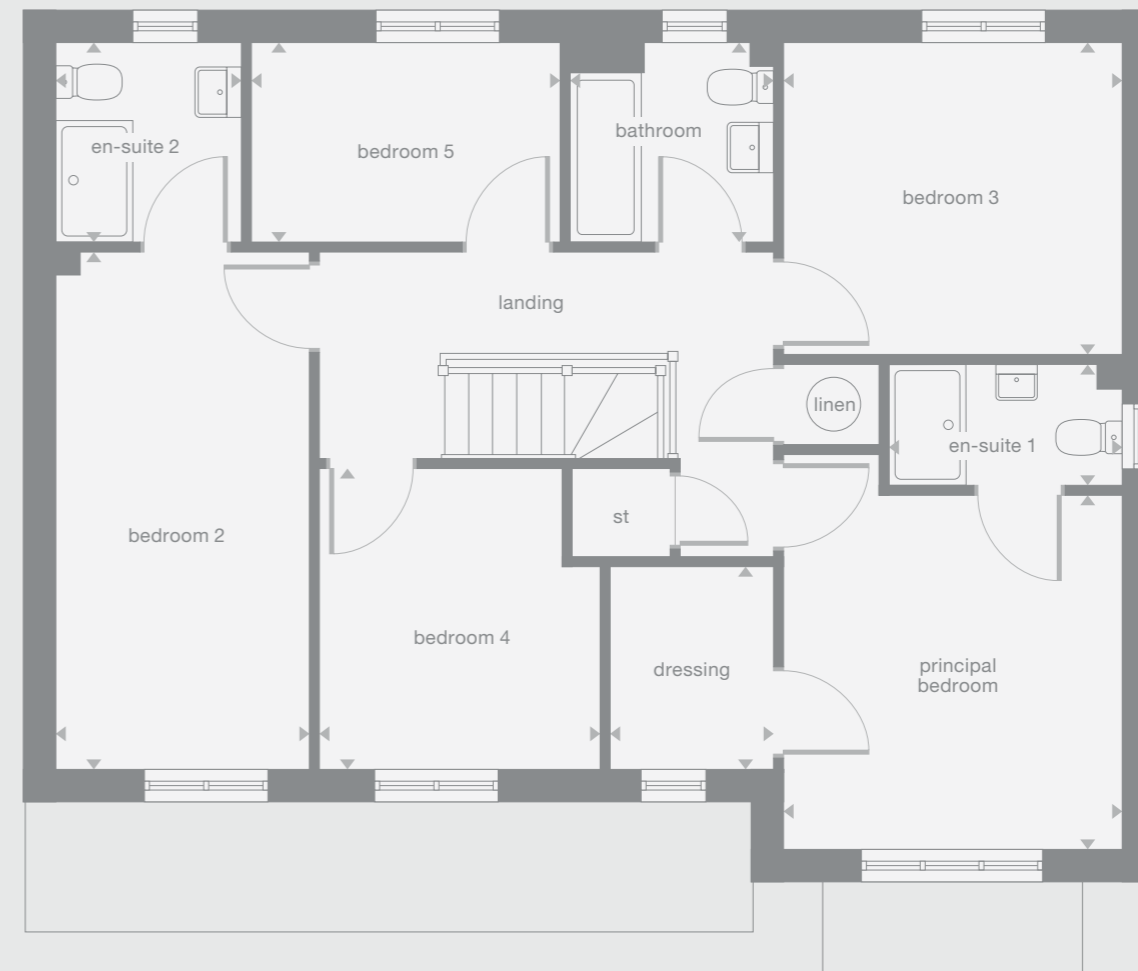
b Boiler



Ground Floor



First Floor



Beautifully located on the southern edge of Stoneyetts, this exciting neighbourhood of energy efficient three, four and five bedroom homes combines fresh air and wide horizons with good local amenities and excellent transport links with the central belt. It presents an opportunity to settle into a historic, thriving community, with the countryside close at hand.
Welcome to Stoneyetts Village...



Specification

Kitchen/Laundry

Contemporary style fitted kitchen with selection of colour choices

Worktop with upstand to wall

Stainless steel 1½ bowl sink (where layout permits) and monobloc mixer tap

Stainless steel chimney hood and splashback to hob

Stainless steel 4-burner gas hob

Stainless steel single fan oven

Plumbing and electrics for washing machine

Plumbing and electrics for dishwasher

3 spot LED track light to ceiling

Bathroom/En-Suite/WC

Ideal Standard's contemporary style white sanitaryware

Soft close toilet seat to bathroom

Thermostatic shower mixer valve (where applicable)

Low profile shower tray with chrome style framed clear glass enclosure

Porcelanosa ceramic wall tiles to bathroom and en-suites (please refer to drawings for specific areas)

Electrical

TV socket to lounge

BT socket (housetypes vary - please see drawings for location)

White sockets and switches

PIR operated porch light

Front doorbell and chime

USB charging socket to kitchen

Power and lighting to integral garages

Photovoltaic roof panels (development specific* and position specific to plot orientation - ask for details)

Battery operated carbon monoxide detectors (locations vary)

Mains wired (with battery back-up) smoke detectors

Heating

Gas central heating throughout

Thermostatically controlled radiators to all rooms (except where room thermostats are fitted)

Programmable control of heating zones

Exterior

Double glazed PVCu windows

Double glazed PVCu french casement doors to patio (where layout permits)

PVCu fascias, soffits and rainwater goods

Multi-point door locking system to front and rear/side doors

Up-and-over steel garage door (where applicable)

House numbers ready fitted

Decorative

Moulded spindles and newels to staircase

Moulded skirting boards and architraves

White internal doors with chrome handles

Smooth finish ceilings, painted in white

Walls painted in white

Woodwork painted in white

Landscaping

Turf to front garden

0.9m post and rail fence between plots

1.8m screen fence to rear boundary only (please refer to boundary treatment drawing)

Rotovated topsoil to rear garden

All customer choices and optional extras can only be included at an early stage of building construction. Please check with the Development Sales Manager for specific details. These sales particulars do not constitute a contract, form part of a contract or a warranty. Please refer to the 'Important Notice' section at the back of the particular development brochure for more information.

*Photovoltaic roof panels are not fitted on all developments. Please speak to the Development Sales Manager for details.

Why Miller Homes?

We've been building homes since 1934, that's three generations of experience. We've learned a lot about people and that's made a big difference to what we do and how we do it.

We're enormously proud of the homes we build, combining traditional craftsmanship with new ideas like low carbon technologies. The big difference is that we don't stop caring once we've finished the building, or when we've sold the house, or even once you've moved in. We're there when you need us, until you're settled, satisfied and inviting your friends round.



5 stars for customer satisfaction

Development Opening Times

Please see millerhomes.co.uk for development opening times or call 03301 621 357.

Sat Nav: G69 0JG

This brochure is printed on GalerArt and contains material sourced from responsibly managed forests. It's certified by the Forest Stewardship Council, an organisation dedicated to promoting responsible forest management and manufacture of wood products, like paper. It's a small thing, we know, but enough small things make a big difference. Please recycle this brochure and help make that difference.

millerhomes.co.uk

millerhomes

the place to be®