



**Persimmon**

Together, we make your home



## **Woodhorn Meadows Phase 2**

Ashington • Northumberland



**Persimmon**  
Together, we make your home

# Together, we make your home

When it comes to designing a new development, we apply the same philosophy every time – make it unique, make it personal. That’s because we understand your new home is more than simply bricks and mortar. It’s a private place of sanctuary where we hope you’ll laugh, entertain and escape for many years to come.

**“With over 50 years of building excellence, find out more about us on page 4”**



## **5 stars!**

We’re proud of our 5 star builder status awarded by the national Home Builders Federation (HBF). It’s a reflection of our commitment to delivering excellence always and putting our customers at the heart of all we do.



## Woodhorn Meadows Phase 2

# Find out more

About Persimmon Homes	4
Your journey with us and schemes to help	6
Living at Woodhorn Meadows	8
Development layout	10
Our homes	12
Specifications	24
Sustainability	26
Personalise with Finishing Touches	28
Reasons to buy from us	30



Who we are

# A little bit about us

You're about to make one of the most exciting investments of your life! A beautiful place to call home for years to come. Here are some reasons to invest in a Persimmon home...

## Over 50 years of expertise

We've been building homes and communities since the early seventies, and just as fashions have moved on, so too has construction. Over half a century we've perfected processes, fine-tuned materials and honed skills to make us one of today's most modern and progressive home builders.

## Sustainability mission

We're committed to reducing our impact on the planet and building for a better tomorrow, with a dedicated in-house team focused on this. [Read more on page 26](#)

## Persimmon in numbers

It's not all about numbers we know, but to give you sense of scale here are a few:

**14,868**

homes  
sold in  
2022

**200+**

locations  
across  
the UK

**5000+**

employees  
make it all  
happen

**700+**

apprentices  
taken on  
each year

**£505.6m**

invested in  
local communities  
in 2022



# “Building sustainable homes and community hubs”

## Save money on your energy bills

The increased thermal retention from our insulation and double glazing, along with reduced water use thanks to efficient appliances, mean you'll automatically save money on your energy and water bills – and with the rising cost of living, this can make a real difference.



Take a look at the recently published HBF Watt a Save report to find out how much you could save.



## Real Living Wage

We're proud to be accredited to the Real Living Wage. We value our employees and want to pay them fairly for the good work they do.

**Like to know more? Just scan the QR code below.**



## Giving back

We do everything we can to give back to our communities and proudly contribute towards community hubs, children's play areas, schools and sports facilities.

Our 'Community Champions' and 'Building Futures' programmes help to raise funds for projects and charities across Great Britain. If you'd like to get involved visit [persimmonhomes.com/community-champions](https://persimmonhomes.com/community-champions) to see if you could apply to support your local community.



## Happy hour

We run Customer Construction Clinics from our on-site sales offices each Monday from 5-6pm. Pop in to see the team both during and after you've moved in to your new home.



## 10-year warranty

When you buy a Persimmon home it comes complete with a 'peace of mind' 10-year insurance-backed warranty and our own two-year Persimmon warranty.



## Help when you need it

You'll have a dedicated customer care helpline, plus cover for emergencies like complete loss of electricity, gas, water or drainage.

**Finishing Touches**  
 We know you'll want to make your home your own, so we created 'Finishing Touches', our home personalisation service. **Read more on page 28**





With you all the way

# Your journey with us

From finding your perfect new home to moving in, we're here to help every step of the way.

1. .....→ 2. .....→ 3. ....

## Reservation

So you've seen a home you love? Speak to one of our friendly sales advisors who will help you secure your dream home.

## Solicitor

You'll need to instruct a solicitor or conveyancer at the point of reservation. Your sales advisor can recommend a local independent company.

## Mortgage application

Most people will need to apply for a mortgage. We can recommend independent financial advisors to give you the best impartial advice.

4. .....→ 5. .....→ 6. ....

## Personalise!

The bit you've been waiting for! Making the final choices for your new home. Depending on build stage you can also choose from a range of Finishing Touches.

## Exchange contracts

One step closer to moving in – this is where we exchange contracts and your solicitor will transfer your deposit.

## Quality assurance

Your home will be thoroughly inspected by site teams and will also have an Independent Quality Inspection to make sure it's ready for you to move into.

7. .....→ 8. .....→ 9. ....

## Home demo

Another exciting milestone! Here's where you get to see your new home before completion. You'll be shown how everything works and any questions can be answered.

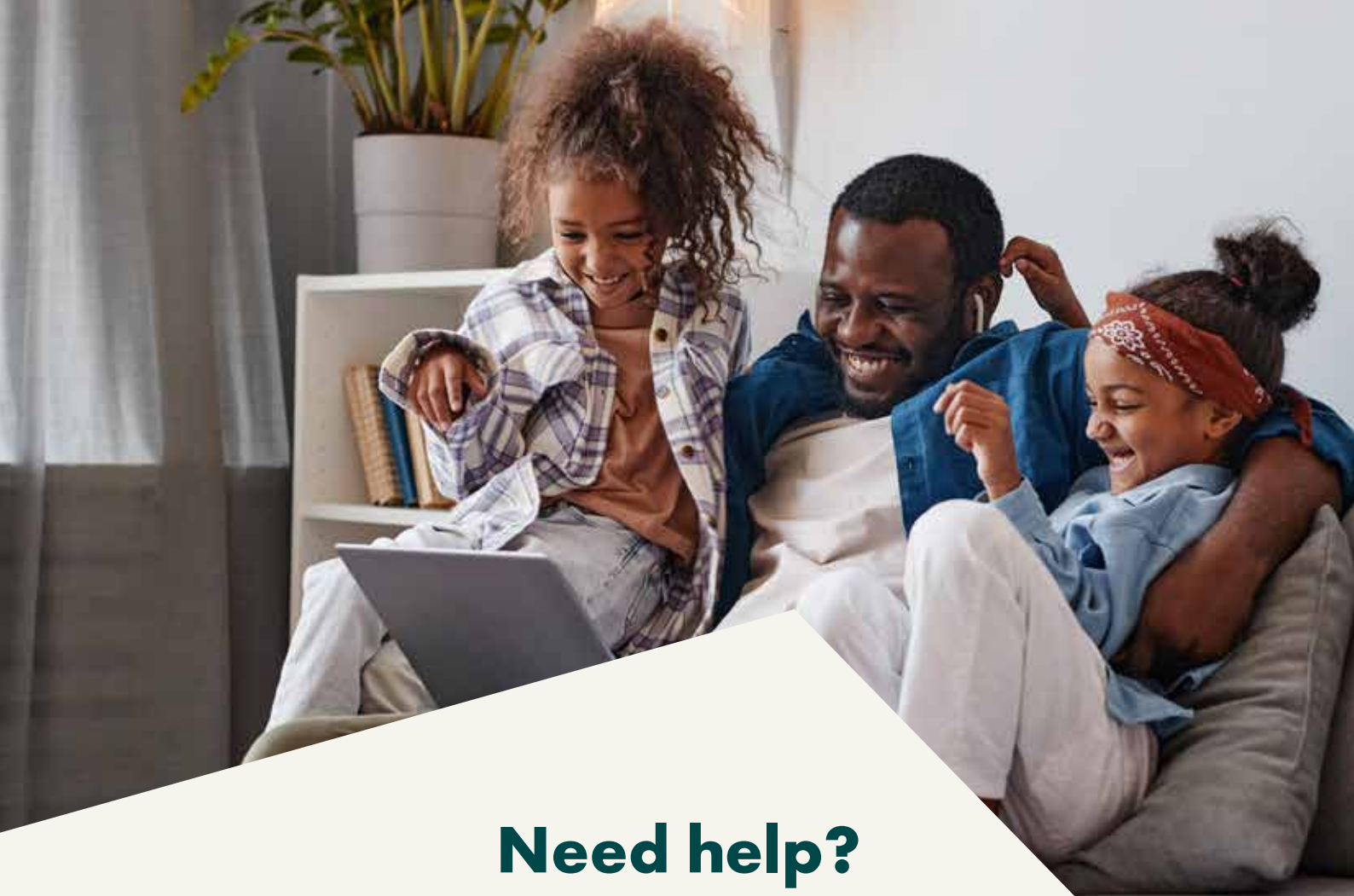
## Handover

The moment you've been waiting for! The paperwork has been completed, the money transferred and now it's time to move in and start unpacking...

## After-care

Our site and customer care teams will support you every step of the way. You'll receive a dedicated customer care line number to deal with any issues.

[persimmonhomes.com](https://www.persimmonhomes.com)



## Need help?

One of the best things about buying a new-build home is the amazing offers and schemes you could benefit from. T&Cs apply.



**PART  
EXCHANGE**



**HOME  
CHANGE**



**EARLY  
BIRD**



**Deposit Unlock**



**Bank of Mum and Dad**



**Deposit Boost**



**Armed Forces/Key  
Workers Discount**



- Beautiful range of 2, 3 and 4-bedroom homes
- Local schools close by
- Great local amenities
- Close to Newbiggin-by-the-Sea



**Scan me!**

For availability and pricing on our beautiful new homes at Woodhorn Meadows.





Ashington • Northumberland

# Woodhorn Meadows Phase 2

Woodhorn Meadows is located in Ashington, a large town with fantastic amenities and good connections to Newcastle-upon-Tyne. It's also close to countryside and just a short drive away from the beautiful north-east coast.

Ashington town centre is a short drive from Woodhorn Meadows and has a variety of shops, bars, restaurants, takeaways and two supermarkets. For more choice, the popular town of Morpeth is approximately 15 minutes away by car, and has a great selection of high street and independent shops, cafés, restaurants and leisure facilities to enjoy.

If you enjoy keeping fit, Ashington Leisure Centre is just over two miles from the development and has something for everyone with a well-equipped gym, two swimming pools, a Tranquility Spa, and a large soft play area.

## Explore the area

The development is only a 5-minute drive from Newbiggin-by-the-Sea, famous for the

'couple sculpture'. Alternatively, jump in the car for a 14-minute drive and visit the multi-coloured beach huts in Blyth.

The QE2 Country Park is close to Woodhorn Meadows. Here you can enjoy its lake with lovely scenic walks, an assortment of wildlife and even a small trainline - a treat for the kids. The park and lake neighbour the Woodhorn Museum; a former 19th-century coal mine now a museum and heritage centre for art and local historic relics, as well as an ever-changing contemporary arts and event programme.

## Great education options

Families living at Woodhorn Meadows will be well-catered for. Kids 1st Nursery is a short distance from the development as are Dukes Secondary School, Ashington Academy, and Bothal Primary School.

---

## Start exploring....

Newbiggin-by-the-Sea  
**2.4 miles**

Cambois  
**4.4 miles**

Blyth  
**6.5 miles**

Morpeth  
**7.8 miles**

Newcastle-upon-Tyne  
**16.1 miles**



# Woodhorn Meadows Phase 2

## Our homes

### 2 bedroom

The Epping

### 3 bedroom

The Danbury

The Dalby Detached

The Dalby Semi

The Sherwood

The Sherwood Corner

The Charnwood Corner

The Braunton

### 4 bedroom

The Burnham

The Greenwood Corner

The Marston

The Whiteleaf

DOMV





This site layout is intended for illustrative purposes only, and may be subject to change, for example, in response to market demand, ground conditions or technical and planning reasons. Trees, planting and public open space shown are indicative, actual numbers and positions may vary. This site plan does not form any part of a warranty or contract. Further information is available from a site sales advisor.



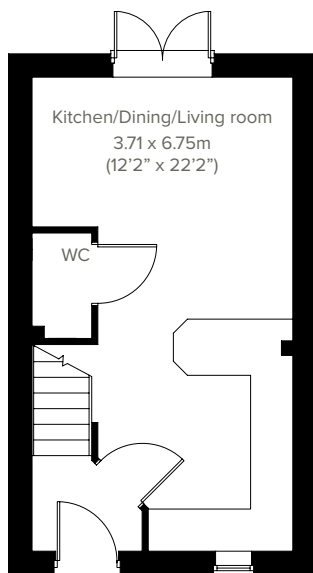


2 bedroom home

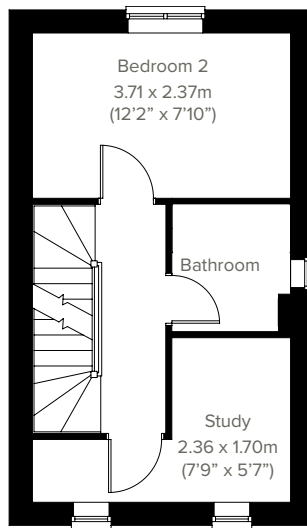
# The Epping



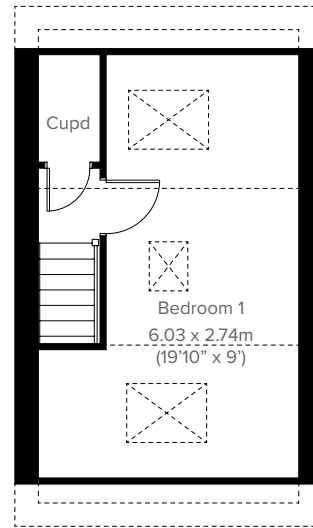
The popular Epping is a two-bedroom home featuring a bright and modern open-plan kitchen/dining/living room with French doors leading into the garden. The study on the first floor, handy storage cupboard and two good-sized bedrooms mean it ticks all the boxes for practical family living too.



**GROUND FLOOR**



**1ST FLOOR**



**2ND FLOOR**

Please note that elevation treatments and window/door positions may vary from plot to plot. Plot specific information will be confirmed on your reservation check list.

This information is for guidance only and does not form any part of any contract or constitute a warranty. Illustrations are of typical elevations and may vary. Floor plans are not drawn to scale and window positions may vary. Room dimensions are subject to a +/- 50mm (2") tolerance and are based on the maximum dimensions in each room. Please consult your sales advisor on site for specific elevations, room dimensions and external finishes. The EPC ratings are estimated and vary between home types, orientation and developments.

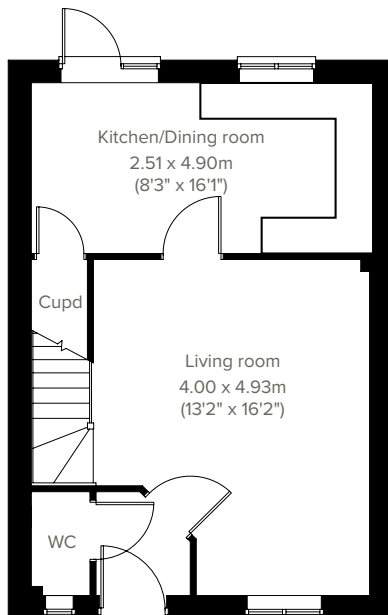


3 bedroom home

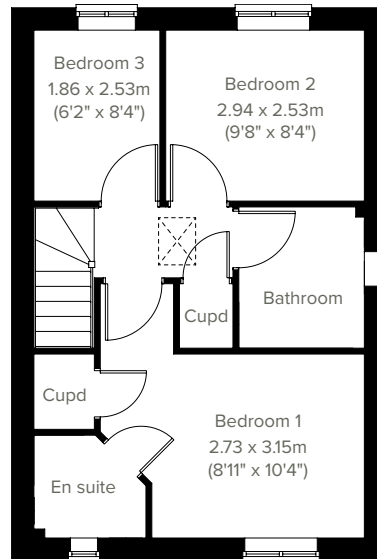
# The Danbury



Perfect for the way we live today, the three-bedroom Danbury has a modern open plan kitchen/dining room with garden access and a spacious front-aspect living room that's ideal for entertaining. Upstairs there are three bedrooms - bedroom one has an en suite - and a family-sized bathroom. Appealing to families, first-time buyers and young professionals.



**GROUND FLOOR**



**1ST FLOOR**

Please note that elevation treatments and window/door positions may vary from plot to plot. Plot specific information will be confirmed on your reservation check list.

This information is for guidance only and does not form any part of any contract or constitute a warranty. Illustrations are of typical elevations and may vary. Floor plans are not drawn to scale and window positions may vary. Room dimensions are subject to a +/- 50mm (2") tolerance and are based on the maximum dimensions in each room. Please consult your sales advisor on site for specific elevations, room dimensions and external finishes. The EPC ratings are estimated and vary between home types, orientation and developments.

14

Predicted Energy Assessment: B

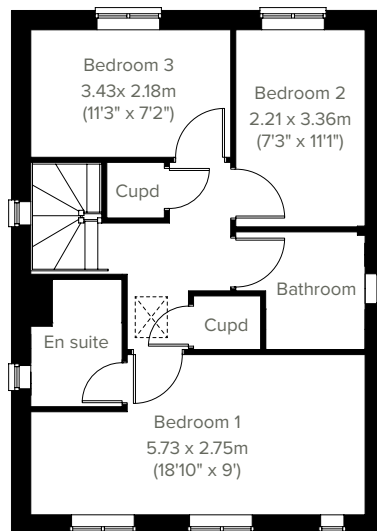
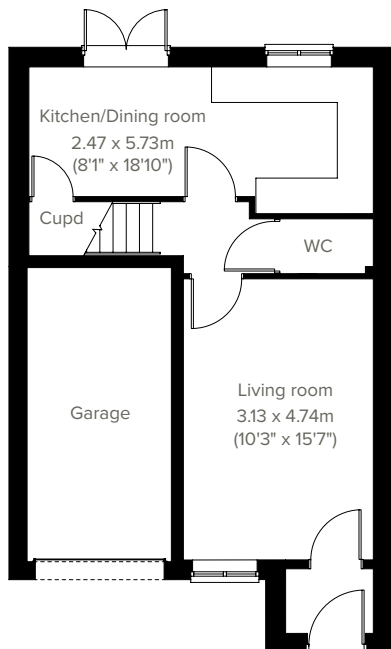


3 bedroom home

# The Dalby Detached



Designed with modern living in mind, the Dalby detached is a popular three-bedroom home ideal for families. The light-filled modern open plan kitchen/dining room with French doors leading into the garden is great for entertaining and family meals. The front porch, downstairs WC and cupboards take care of everyday storage. Plus there's an en suite to bedroom one, a family bathroom and integral garage.



Please note that elevation treatments and window/door positions may vary from plot to plot. Plot specific information will be confirmed on your reservation check list.

This information is for guidance only and does not form any part of any contract or constitute a warranty. Illustrations are of typical elevations and may vary. Floor plans are not drawn to scale and window positions may vary. Room dimensions are subject to a +/- 50mm (2") tolerance and are based on the maximum dimensions in each room. Please consult your sales advisor on site for specific elevations, room dimensions and external finishes. The EPC ratings are estimated and vary between home types, orientation and developments.

15

Predicted Energy Assessment: B

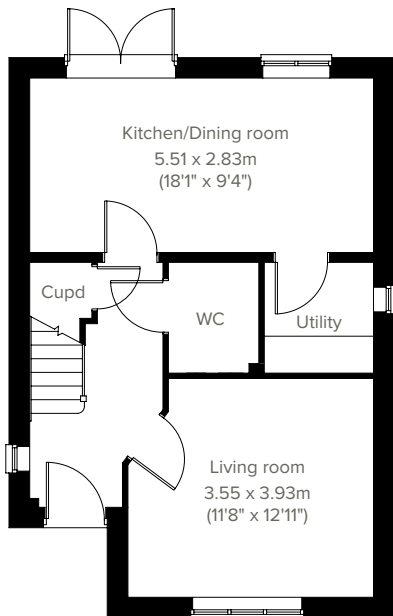


3 bedroom home

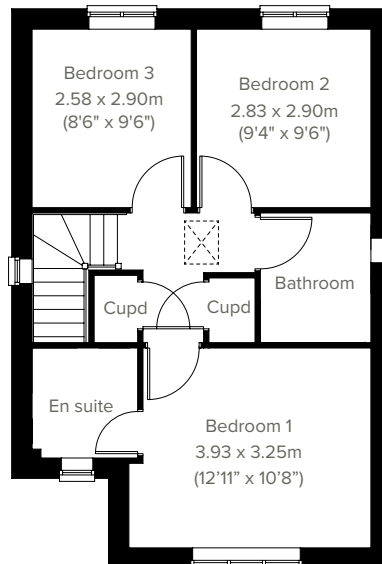
# The Sherwood



A nicely-proportioned three-bedroom detached home, the Sherwood has everything you need for modern living. Downstairs there's an open plan kitchen/dining room with French doors leading to the garden, a front-aspect living room, downstairs WC, utility room and handy storage cupboard. The first floor is home to a generous bedroom one and en suite, plus two further bedrooms, two storage cupboards and a family bathroom.



**GROUND FLOOR**



**1ST FLOOR**

Please note that elevation treatments and window/door positions may vary from plot to plot. Plot specific information will be confirmed on your reservation check list.

This information is for guidance only and does not form any part of any contract or constitute a warranty. Illustrations are of typical elevations and may vary. Floor plans are not drawn to scale and window positions may vary. Room dimensions are subject to a +/- 50mm (2") tolerance and are based on the maximum dimensions in each room. Please consult your sales advisor on site for specific elevations, room dimensions and external finishes. The EPC ratings are estimated and vary between home types, orientation and developments.



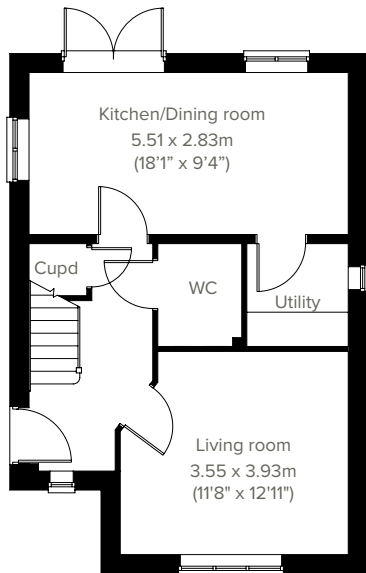


3 bedroom home

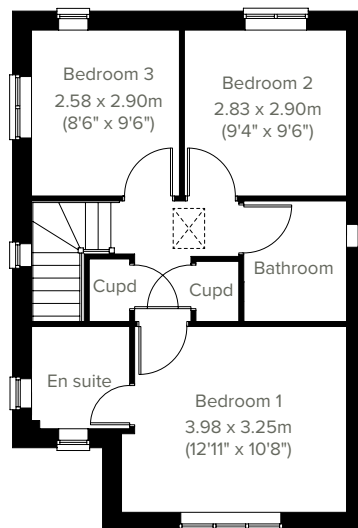
# The Sherwood Corner



A three-bedroom detached home with kerb appeal, the Sherwood Corner has everything you need for modern living. Downstairs there's an open plan kitchen/dining room with French doors leading to the garden, a front-aspect living room, downstairs WC, utility room and handy storage cupboard. The first floor is home to a generous bedroom one with an en suite, plus two further bedrooms, two storage cupboards and a family bathroom.



## GROUND FLOOR



## 1ST FLOOR

Please note that elevation treatments and window/door positions may vary from plot to plot. Plot specific information will be confirmed on your reservation check list.

This information is for guidance only and does not form any part of any contract or constitute a warranty. Illustrations are of typical elevations and may vary. Floor plans are not drawn to scale and window positions may vary. Room dimensions are subject to a +/- 50mm (2") tolerance and are based on the maximum dimensions in each room. Please consult your sales advisor on site for specific elevations, room dimensions and external finishes. The EPC ratings are estimated and vary between home types, orientation and developments.

17

Predicted Energy Assessment: B

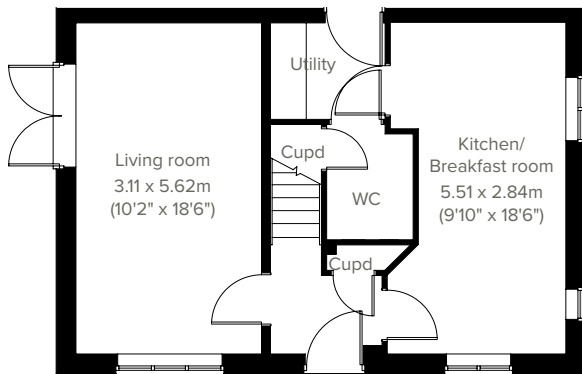


3 bedroom home

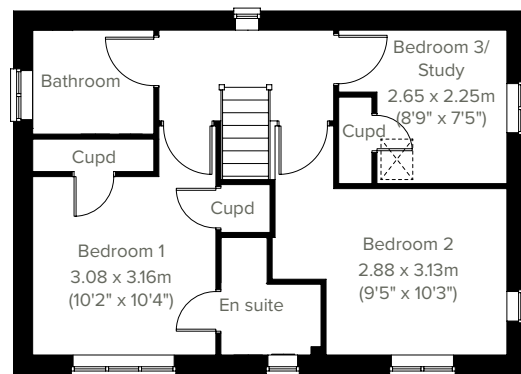
# The Charnwood Corner



Enjoy the best of modern living in this popular three-bedroom home which benefits from a stylish open plan kitchen/breakfast room and separate utility with garden access. The Charnwood Corner features a bright dual-aspect living room with French doors leading into the garden, handy storage cupboards and downstairs WC. Upstairs there are three good-sized bedrooms - bedroom one with an en suite - a family bathroom and further storage cupboards.



**GROUND FLOOR**



**1ST FLOOR**

Please note that elevation treatments and window/door positions may vary from plot to plot. Plot specific information will be confirmed on your reservation check list.

This information is for guidance only and does not form any part of any contract or constitute a warranty. Illustrations are of typical elevations and may vary. Floor plans are not drawn to scale and window positions may vary. Room dimensions are subject to a +/- 50mm (2") tolerance and are based on the maximum dimensions in each room. Please consult your sales advisor on site for specific elevations, room dimensions and external finishes. The EPC ratings are estimated and vary between home types, orientation and developments.

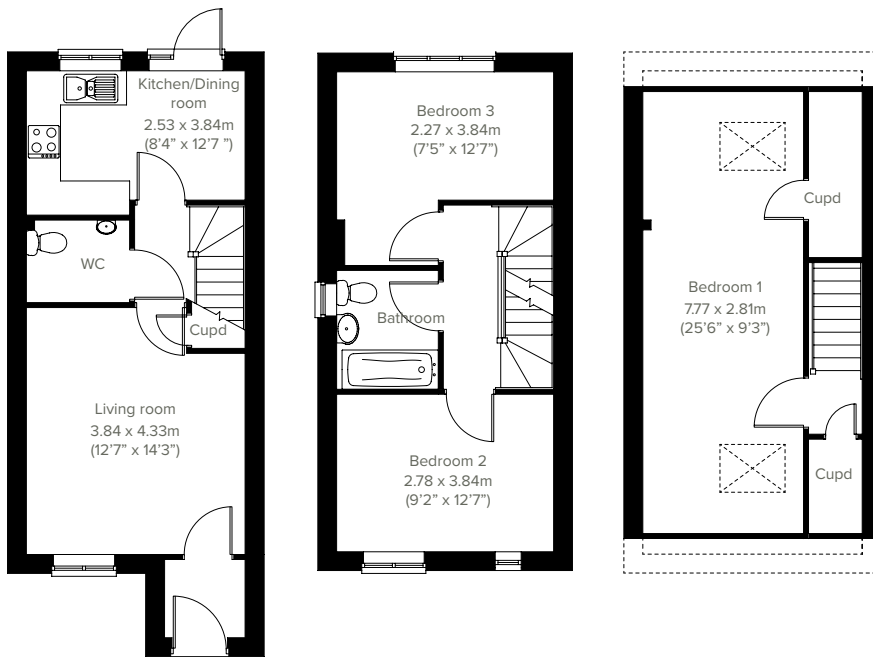


# The Braunton

3 bedroom home



A superb family home, the Braunton features a bright open plan kitchen/dining room with access to the garden, and a spacious front-aspect living room. A WC and storage cupboard ensure it's practical as well as stylish. Upstairs you'll find two bedrooms and a family-sized bathroom, and on the top floor bedroom one benefits from further storage cupboards.



**GROUND FLOOR**

**1ST FLOOR**

**2ND FLOOR**

Please note that elevation treatments and window/door positions may vary from plot to plot. Plot specific information will be confirmed on your reservation check list.

This information is for guidance only and does not form any part of any contract or constitute a warranty. Illustrations are of typical elevations and may vary. Floor plans are not drawn to scale and window positions may vary. Room dimensions are subject to a +/- 50mm (2") tolerance and are based on the maximum dimensions in each room. Please consult your sales advisor on site for specific elevations, room dimensions and external finishes. The EPC ratings are estimated and vary between home types, orientation and developments.

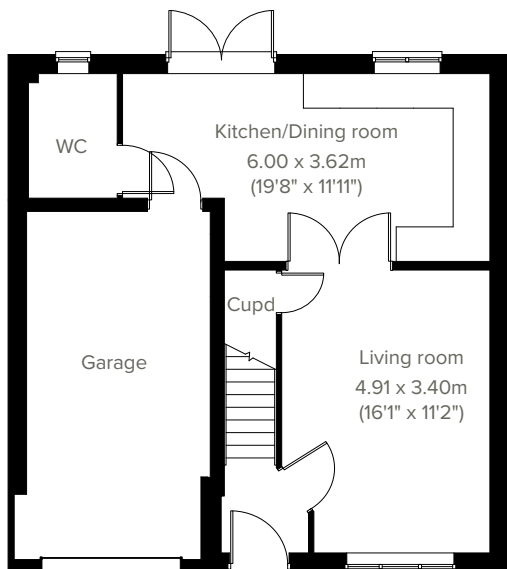


4 bedroom home

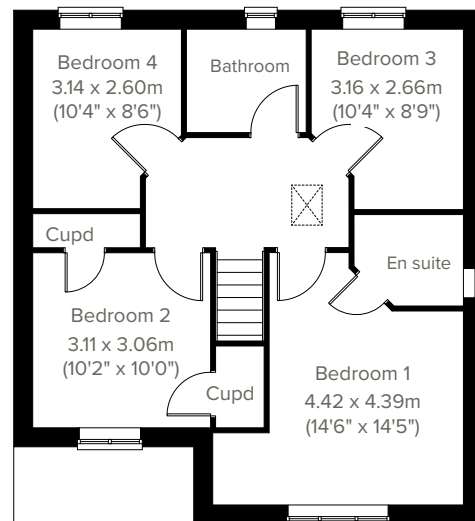
# The Burnham



The Burnham is a great example of one of our family-friendly new homes. Four bedrooms, two bathrooms, one sociable living space flowing into another, and an integral garage, all embrace the day-to-day business of active family life. French doors in the spacious kitchen/dining room mean you can let the outdoors in on sunny days.



**GROUND FLOOR**



**1ST FLOOR**

Please note that elevation treatments and window/door positions may vary from plot to plot. Plot specific information will be confirmed on your reservation check list.

This information is for guidance only and does not form any part of any contract or constitute a warranty. Illustrations are of typical elevations and may vary. Floor plans are not drawn to scale and window positions may vary. Room dimensions are subject to a +/- 50mm (2") tolerance and are based on the maximum dimensions in each room. Please consult your sales advisor on site for specific elevations, room dimensions and external finishes. The EPC ratings are estimated and vary between home types, orientation and developments.

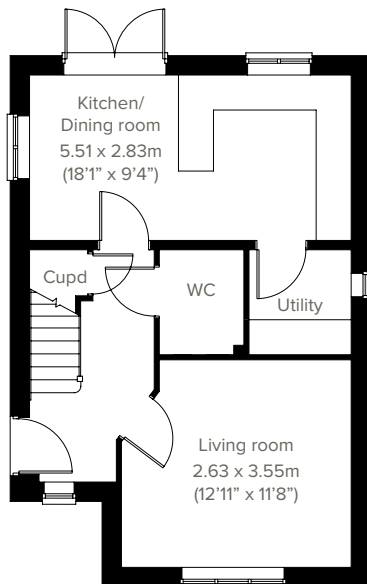


4 bedroom home

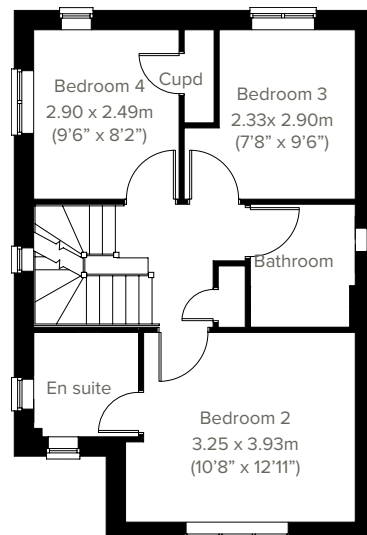
# The Greenwood Corner



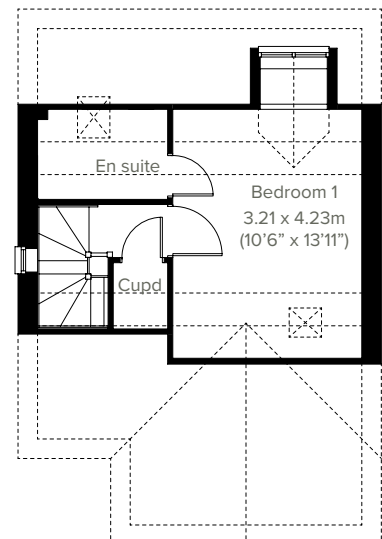
The Greenwood Corner is an impressive three-storey townhouse with flexible living space to suit modern families. This four-bedroom family home has a practical ground floor including a spacious open plan kitchen/dining room, front-aspect living room, utility, WC and storage cupboard. The second floor consists of three bedrooms, a family-sized bathroom and an en suite to bedroom two. The top floor is home to bedroom one, which has an en suite and storage cupboard.



**GROUND FLOOR**



**1ST FLOOR**



**2ND FLOOR**

Please note that elevation treatments and window/door positions may vary from plot to plot. Plot specific information will be confirmed on your reservation check list.

This information is for guidance only and does not form any part of any contract or constitute a warranty. Illustrations are of typical elevations and may vary. Floor plans are not drawn to scale and window positions may vary. Room dimensions are subject to a +/- 50mm (2") tolerance and are based on the maximum dimensions in each room. Please consult your sales advisor on site for specific elevations, room dimensions and external finishes. The EPC ratings are estimated and vary between home types, orientation and developments.

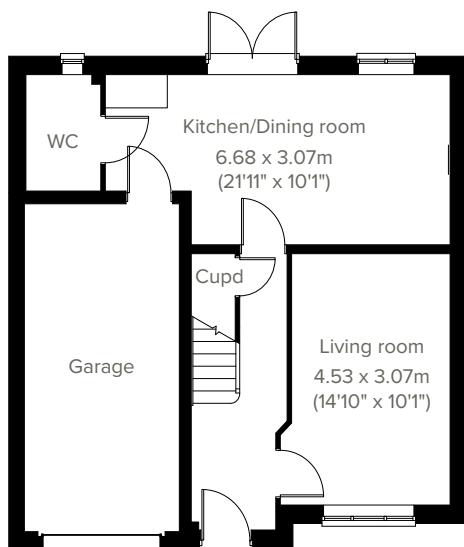


4 bedroom home

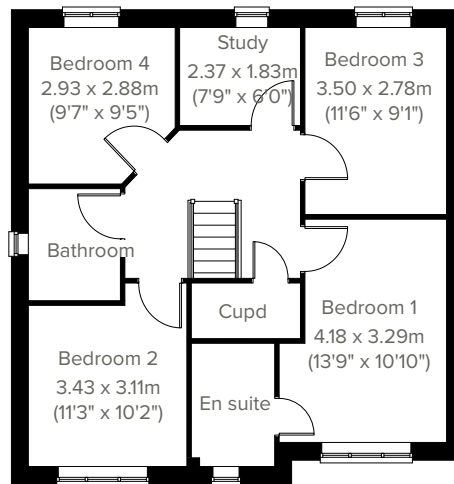
# The Marston



The Marston is a four-bedroom detached home offering open-plan living. The light and airy kitchen/dining room enjoys an open aspect through French doors to the rear garden. There's a bright front-aspect living room, a downstairs WC, a storage cupboard and an adjoining integral garage. Upstairs, there are four good-sized bedrooms with the spacious bedroom one benefiting from an en suite. There's also a separate study, plus a modern fitted bathroom.



**GROUND FLOOR**



**1ST FLOOR**

Please note that elevation treatments and window/door positions may vary from plot to plot. Plot specific information will be confirmed on your reservation check list.

This information is for guidance only and does not form any part of any contract or constitute a warranty. Illustrations are of typical elevations and may vary. Floor plans are not drawn to scale and window positions may vary. Room dimensions are subject to a +/- 50mm (2") tolerance and are based on the maximum dimensions in each room. Please consult your sales advisor on site for specific elevations, room dimensions and external finishes. The EPC ratings are estimated and vary between home types, orientation and developments.

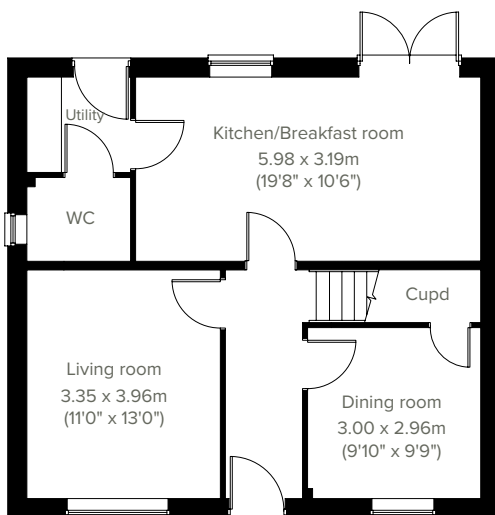


4 bedroom home

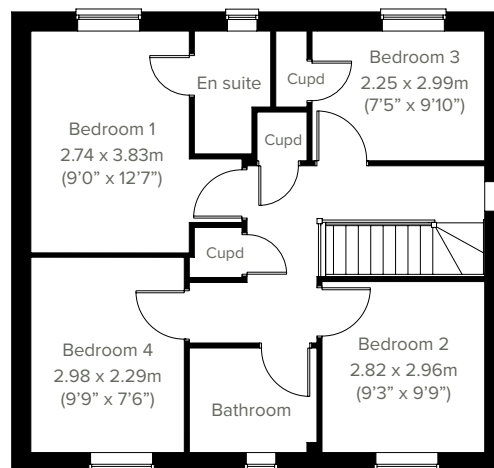
# The Whiteleaf



The Whiteleaf is a four-bedroom detached family home offering the best of modern living. The light and airy kitchen/breakfast room enjoys an open aspect through French doors to the rear garden. There's a bright front-aspect living room, a dining room with storage space, a downstairs WC and handy utility. Upstairs there are four bedrooms with bedroom one benefiting from an en suite, plus a modern-fitted family bathroom and three storage cupboards.



**GROUND FLOOR**



**1ST FLOOR**

Please note that elevation treatments and window/door positions may vary from plot to plot. Plot specific information will be confirmed on your reservation check list.

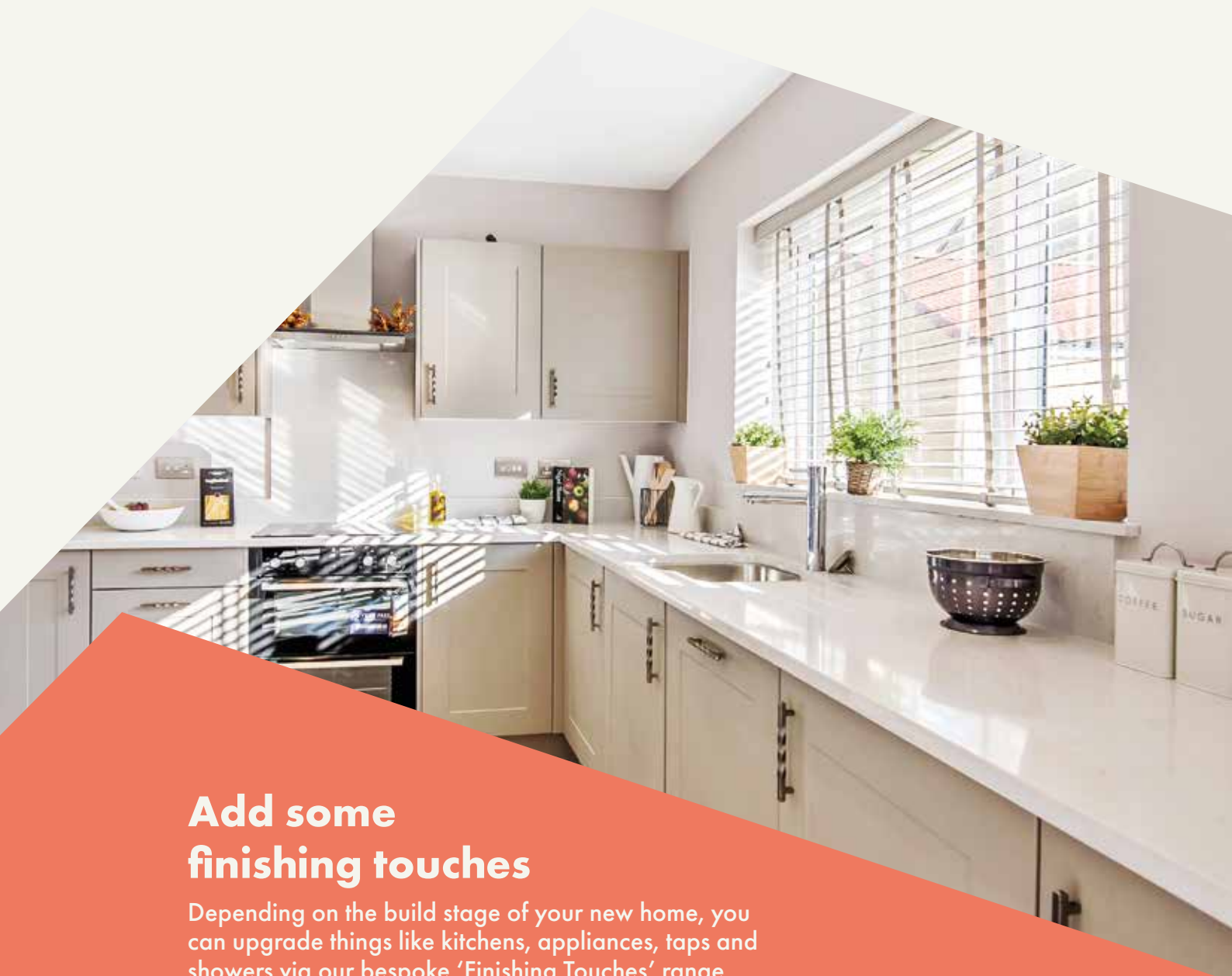
This information is for guidance only and does not form any part of any contract or constitute a warranty. Illustrations are of typical elevations and may vary. Floor plans are not drawn to scale and window positions may vary. Room dimensions are subject to a +/- 50mm (2") tolerance and are based on the maximum dimensions in each room. Please consult your sales advisor on site for specific elevations, room dimensions and external finishes. The EPC ratings are estimated and vary between home types, orientation and developments.



Woodhorn Meadows Phase 2

# Specifications

Our homes include these items as standard to ensure you have everything you need to be comfortable from the day you move in. Built for today's modern lifestyles with sustainability in mind.



## Add some finishing touches

Depending on the build stage of your new home, you can upgrade things like kitchens, appliances, taps and showers via our bespoke 'Finishing Touches' range.





## External

### Walls

Traditional cavity walls.  
Inner: timber frame or block.  
Outer: Style suited to planned architecture.

### Roof

Tile or slate-effect with PVCu rainwater goods.

### Windows

Double glazed E-glass windows in PVCu frames.

### Doors

GRP-skinned external doors with PVCu frames.  
French doors to garden or balcony  
(where applicable).



## Internal

### Ceilings

Painted white.

### Lighting

Pendant or batten fittings with low-energy bulbs.

### Stairs

Staircase painted white.

### Walls

Painted in white emulsion.

### Doors

White pre-finished doors with white hinges.

### Heating

Gas fired combi boiler with radiators in all main rooms, with thermostatically-controlled valves to bedrooms.

### Insulation

Insulated loft and hatch to meet current building regulations.

### Electrics

Individual circuit breakers to consumer unit and double electric sockets to all main rooms.

### General

Media plate incorporating TV and telecommunication outlets to living room.



## Kitchen

### General

Fully-fitted kitchen with a choice of doors and laminate worktop with upstands to match (depending on build stage).

### Plumbing

Plumbing for washing machine.

### Appliances

Single electric stainless steel oven, gas hob in stainless steel and integrated cooker hood and splashback.



## Bathroom

### Suites

White bathroom suites with chrome-finished fittings.

### Extractor fan

Extractor fan to bathroom and en suite (where applicable).

### Shower

Mira showers with chrome fittings to en suite.

### Tiling

Half height tiling to sanitaryware walls in bathroom and en suite.

### Splashbacks

1-course splashback to WC basin /  
3-course splashback to bath / fully tiled shower.

### General

En suite to bedroom(s) where applicable.



## Security

### Locks

Three-point locking to front and rear doors, locks to all windows (except escape windows).

### Fire

Smoke detectors wired to the mains with battery back-up.



## Garage & Gardens

### Garage

Garage, car ports or parking space.

### Garden

Front lawn turfed or landscaped (where applicable).

### Fencing

1.8 metre fence to rear garden, plus gate.





Energy efficiency built in

# Sustainability

**Our homes are typically 30% more efficient than traditional UK housing, helping you to save money and reduce your impact on the environment.**

We're proud that we already build our homes to high levels of energy efficiency, but there's still a way to go. Our in-house sustainability team is dedicated to our mission to have net zero carbon homes in use by 2030, and for our own operations to be net zero carbon by 2040.

To achieve this, we're working to science-based carbon reduction targets in line with the Paris Agreement's 1.5°C warming pledge, investing in low-carbon solutions and technology that will further reduce the carbon footprints of our homes and our impact on the planet.

## Energy efficiency built in:

- ✓ **PEA rating - B**  
Our typical B rating makes our homes much more efficient than traditional D-rated homes.
- ✓ **Up to 400mm roof space insulation**  
Warmer in winter, cooler in summer, reducing energy bills.
- ✓ **Argon gas filled double glazing**  
Greater insulation and reduced heat loss.
- ✓ **Energy efficient lighting**  
We use energy-saving LED lightbulbs in all our homes.
- ✓ **A-rated appliances**  
Many of our kitchen appliances have a highly efficient A rating.
- ✓ **A-rated boilers**  
Our condenser boilers far outperform non-condensing ones.
- ✓ **Local links**  
We're located close to amenities and public transport to help reduce your travel footprint.
- ✓ **Ultra-fast broadband**  
FibreNest fibre-to-the-home connectivity helps you live and work at home more flexibly.
- ✓ **Lower-carbon bricks**  
Our concrete bricks typically use 28% less carbon in manufacture than clay, giving total lifetime carbon savings of 2.4 tonnes of CO<sub>2</sub> per house built.

## Eco goodies

When you move in to your new Persimmon home you'll find some of our favourite eco brands in your Homemove box. These products are plastic free, refillable and ethically sourced.





Your home, your way

# Finishing Touches to make it yours

Our goal is to make your house feel like your home before you've even collected the keys.

Key to achieving this is giving you the creative freedom to add your own style and personality to every room through our fabulous Finishing Touches collection.

Featuring the very latest designs from a host of leading brands, Finishing Touches lets you personalise your home inside and out. And rest assured, every upgrade and item available has been carefully chosen to complement the style

and finish of your new home. Of course, the real beauty is that all these extras will be ready for the day you move in.

Thanks to our impressive buying power we can offer almost any upgrade you can imagine at a highly competitive price. It can all be arranged from the comfort and convenience of one of our marketing suites, in a personal design appointment.

## You can choose:



Kitchens



Appliances



Bathrooms



Flooring



Wardrobes



Fixtures & fittings

"One of the most exciting things about buying a brand new home is putting your own stamp on a blank canvas."



## Share & win!

Share your love for your new Persimmon home and you could win a £100 IKEA voucher. There's one up for grabs each month. For inspiration, check out past winners' homes on our Instagram page @persimmon\_homes

**#lovemypersimmonhome**

## The earlier you reserve, the greater the choice

We'll always try and accommodate the Finishing Touches you want, but they are build-stage dependent, so the earlier you reserve the better.

[persimmonhomes.com/finishingtouches](https://persimmonhomes.com/finishingtouches)

Finishing Touches are subject to availability and stage of construction. Prices for your specific home type will be in our price list. For a full list of Finishing Touches available for your home, please contact the sales advisor on site.



6 reasons why it pays to buy new

## Did you know?

Most of the benefits of buying new are obvious, but some are not. Here's a quick summary of the key reasons why it's such a smart move:

1.

### No chain

Few things are more annoying in the home buying process than a time-consuming chain you can't control. Buying new limits the chance of getting involved in one.

2.

### Energy efficient

Our homes include cost-effective combi boilers, first-rate loft insulation and draught-free double glazed windows to meet stringent energy-efficient standards, keeping your energy bills as low as possible.

3.

### Brand new

Absolutely everything in your new home is brand new. You get all the latest designs and tech, complete with manufacturers' warranties. Win-win.

4.

### More ways to buy

We offer a range of schemes to help get you on the property ladder, including Home Change and Part Exchange.

5.

### 10 year warranty

All our new homes come with a ten-year, insurance-backed warranty, as well as our own two-year Persimmon warranty. In the unlikely event you ever need to claim, our Customer Care Team are there to help you.

6.

### Safe & secure

All our homes are built from fire-retardant materials and come with fitted smoke alarms and fire escape windows. They're also far more secure than older buildings thanks to the security locks and lighting we use.

[persimmonhomes.com](https://www.persimmonhomes.com)



# FibreNest™



Your home, better connected  
for a brighter future



## Ultrafast 500Mb broadband is available on this development.

FibreNest provides you with high-speed, totally unlimited full-fibre broadband to your home, at great prices.



## Choose the best package for you

We know every household is different, that's why we've put together six amazing packages to suit everyone's needs. From surfing the net on the sofa to binge-watching the latest box set, streaming music with friends to ruling the galaxy in the latest must-have game - we've got the service for you.



Scan me!  
For packages & pricing.



0333 234 2220



support@fibrenew.com

### Get connected today!

To sign up you will need your Unique Customer Reference.  
Please ask your sales advisor for this:

C:

D:

P:



## Woodhorn Meadows Phase 2

Summerhouse Lane  
North Seaton  
Ashington  
NE63 9TG

T: 01670 335 342  
E: [woodhornmeadows.nest@persimmonhomes.com](mailto:woodhornmeadows.nest@persimmonhomes.com)  
[persimmonhomes.com/woodhorn-meadows](https://persimmonhomes.com/woodhorn-meadows)

## Head Office

Persimmon Homes North East  
Persimmon House  
Roseden Way  
Newcastle upon Tyne  
NE13 9EA

T: 0191 238 9950  
E: [nest.sales@persimmonhomes.com](mailto:nest.sales@persimmonhomes.com)  
[persimmonhomes.com](https://persimmonhomes.com)  
[persimmonhomes.com](https://persimmonhomes.com)



Issue: June 2024 Ref: 470-315

Persimmon plc, Registered office: Persimmon House, Fulford, York YO19 4FE Registered in England no: 1818486

Woodhorn Meadows Phase 2 is a marketing name only. The copyright in this document and design is confidential to and the property of Persimmon Homes Developments 2024. These details are intended to give a general idea of the type of home but they do not form part of any specification or contract. The dimensions are approximate and may vary depending on internal finish. By the time you read this some of the details may have changed because of the Persimmon Homes policy of continually updating and improving design features. Therefore, please be sure to check the plan and specification in the sales office to keep you up-to-date with the latest improvements. The vendors of this property give notice that: (i) the particulars are produced in good faith, are set out as a general guide only and do not constitute any part of a contract; (ii) no person in the employment of Persimmon Homes or their authorised agents has any authority to make or give any representation or warranty whatever in relation to this property. Persimmon Homes is compliant with the New Homes Quality Code. Please ask your sales advisor if you have any further questions.