

Littlecombe

Off Long Street, Dursley,
Gloucestershire GL11 4HR



FLEECE HOUSE

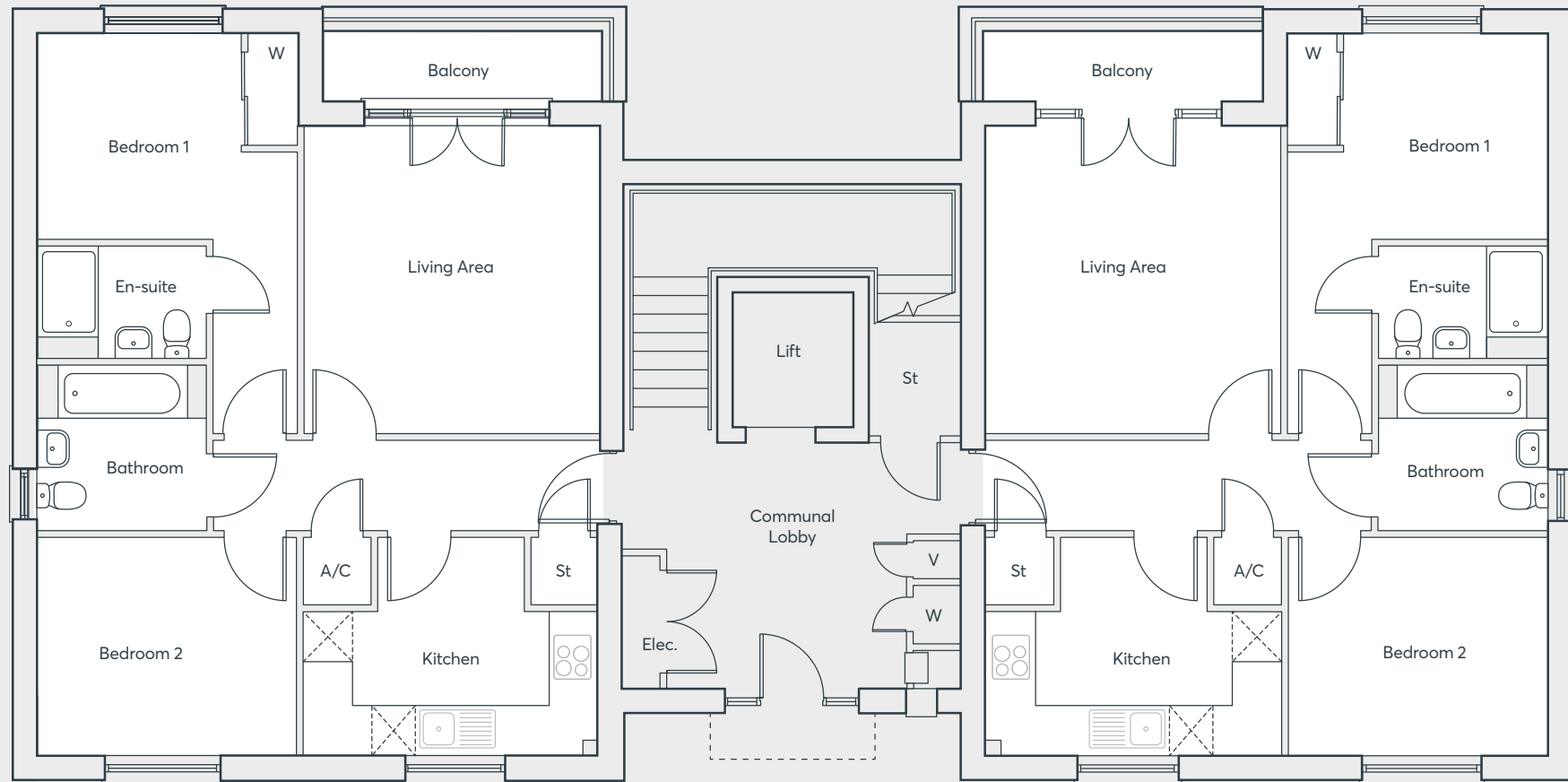


2 bedroom apartments
724 sq. ft.



Ground Floor

Apartment 296 to 297



Apartment 296 724 sq. ft.

Living/Dining	4.11m x 3.95m	13'5" x 13'0"
Kitchen	2.90m x 3.95m	9'6" x 13'0"
Bedroom 1	2.74m x 3.45m	9'0" x 11'4"

En-suite	1.50m x 2.25m	5'0" x 7'4"
Bedroom 2	2.90m x 3.53m	9'6" x 11'6"
Bathroom	2.20m x 2.25m	7'2" x 7'4"

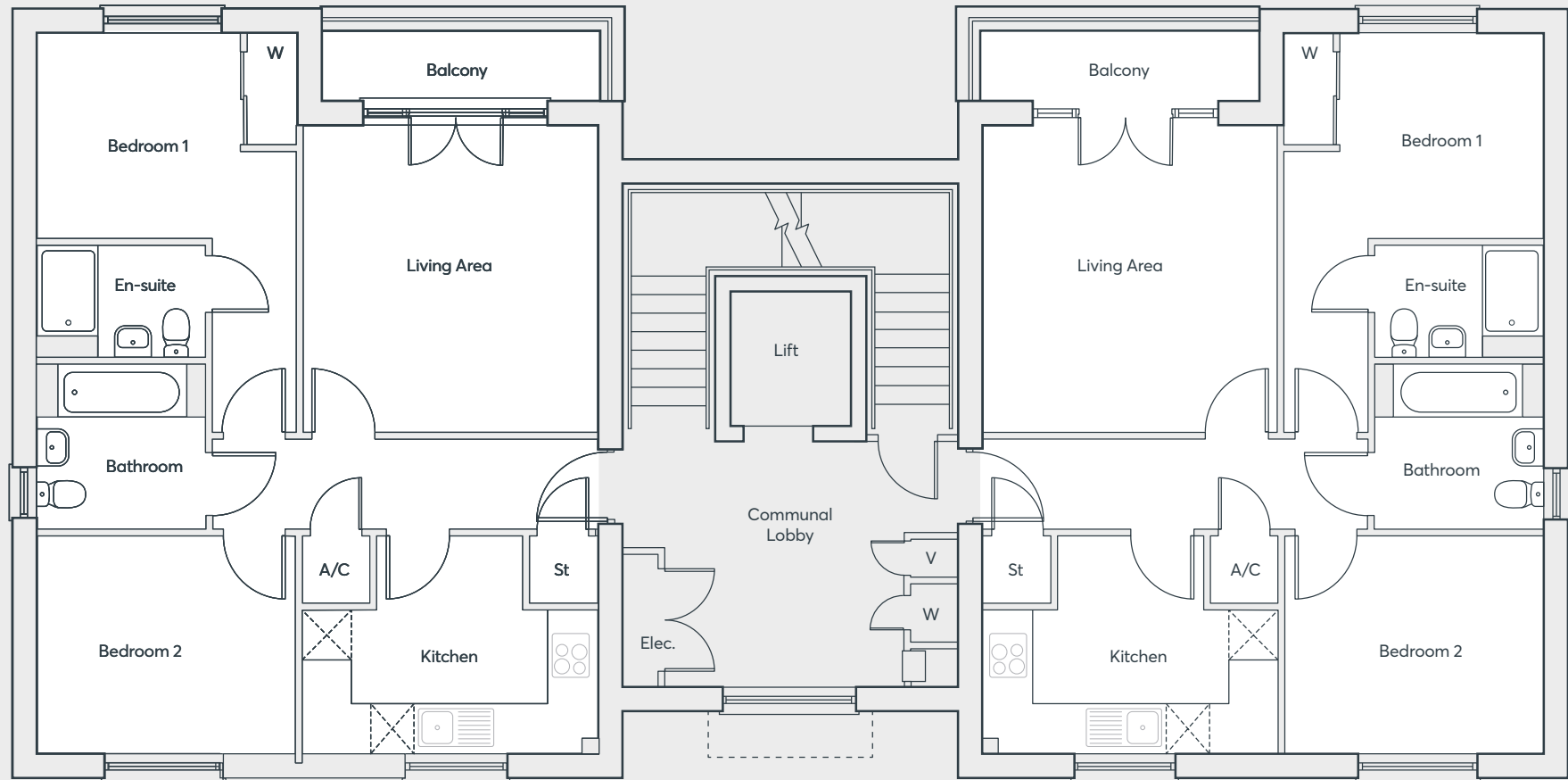
Apartment 297 724 sq. ft.

Living/Dining	3.95m x 4.10m	13'0" x 13'6"
Kitchen	3.95m x 2.90m	13'0" x 9'6"
Bedroom 1	3.45m x 2.74m	11'4" x 9'0"

En-suite	2.25m x 1.50m	7'5" x 4'11"
Bedroom 2	3.45m x 2.90m	11'4" x 9'6"
Bathroom	2.25m x 2.20m	7'5" x 7'3"

First, Second and Third Floors

Apartments 298 to 303



Apartments 298, 300 & 302 724 sq. ft.

Living/Dining	3.95m x 4.10m	13'0" x 13'6"	En-suite	2.25m x 1.50m	7'5" x 4'11"
Kitchen	3.95m x 2.90m	13'0" x 9'6"	Bedroom 2	3.45m x 2.90m	11'4" x 9'6"
Bedroom 1	3.45m x 2.74m	11'4" x 9'0"	Bathroom	2.25m x 2.20m	7'5" x 7'3"

Apartments 299, 301 & 303 724 sq. ft.

Living/Dining	3.95m x 4.10m	13'0" x 13'6"	En-suite	2.25m x 1.50m	7'5" x 4'11"
Kitchen	3.95m x 2.90m	13'0" x 9'6"	Bedroom 2	3.45m x 2.90m	11'4" x 9'6"
Bedroom 1	3.45m x 2.74m	11'4" x 9'0"	Bathroom	2.25m x 2.20m	7'5" x 7'3"



Please speak to a member of the Sales Team if you require this brochure in an alternative format.

St. Modwen Homes, Two Devon Way, Longbridge, Birmingham, B31 2TS
T: 0121 647 1000 E: sales@stmodwenhomes.co.uk

[stmodwenhomes.co.uk](https://www.stmodwenhomes.co.uk)