



**West Craigs Manor
Edinburgh**

millerhomes

the place to be®

- 04 Welcome Home
- 06 Plot Information
- 08 Floorplans
- 46 The Miller Difference
- 48 Contact Us

A new home. The start of a whole new chapter for you and your family. And for us, the part of our job where bricks and mortar becomes a place filled with activity and dreams and fun and love. We put a huge amount of care into the houses we build, but the story's not finished until we match them up with the right people. So, once you've chosen a Miller home, we'll do everything we can to make the rest of the process easy, even enjoyable. From the moment you make your decision until you've settled happily in, we'll be there to help.



Welcome home

Just five miles from Princes Street and exceptionally well situated for travel to Glasgow, Fife and the north, this attractive new neighbourhood of two, three, four and five bedroom new build homes for sale offers excellent access to air, tram and bus travel. With good local shops and amenities, and all the celebrated attractions and festivals of Edinburgh in easy reach, this is a very special place to live.

Welcome to West Craigs Manor...

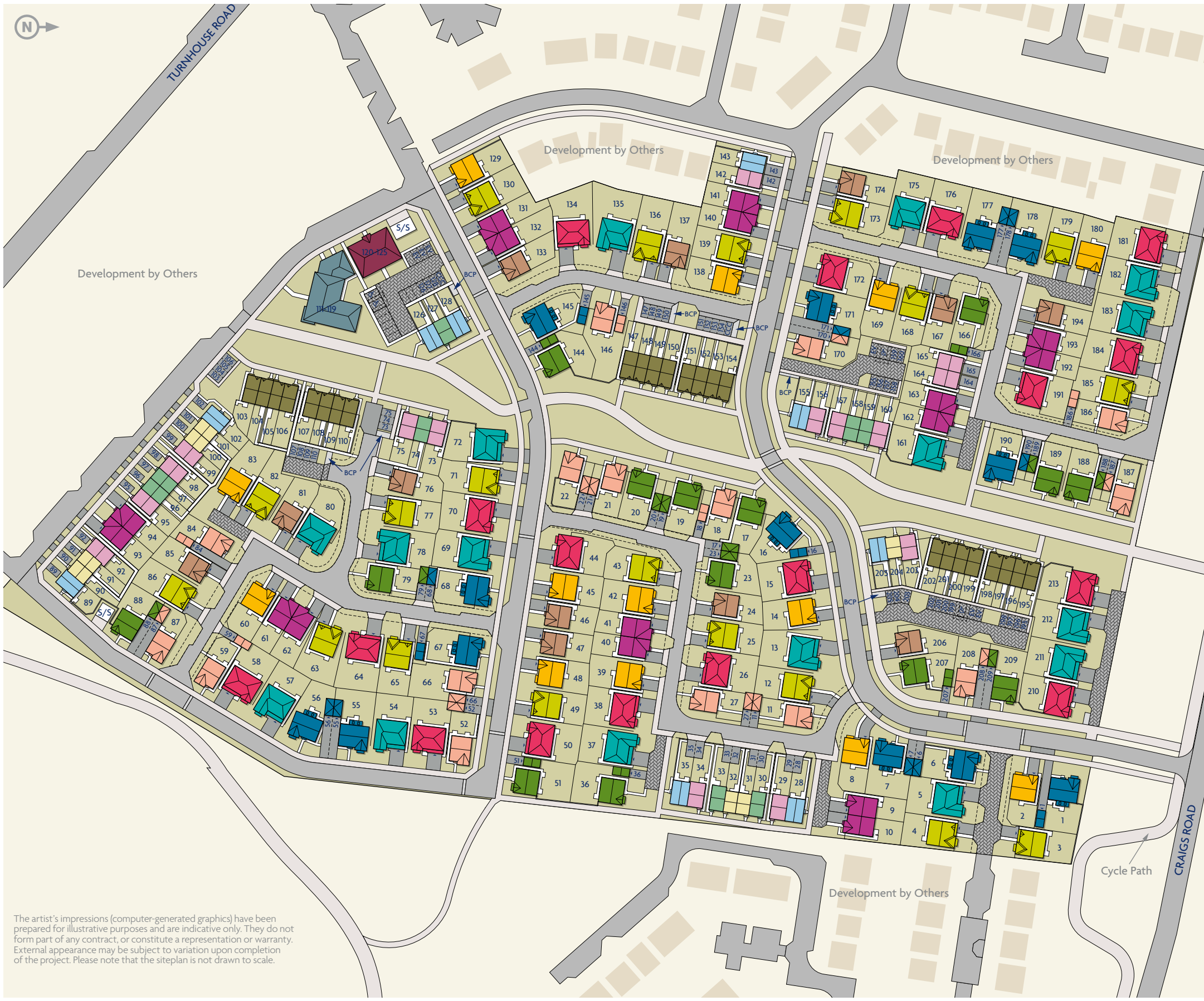
The artist's impressions (computer-generated graphics) have been prepared for illustrative purposes and are indicative only. They do not form part of any contract, or constitute a representation or warranty. External appearance may be subject to variation upon completion of the project.



Plot Information

- Apartment A
See Page 08
- Apartment B
See Page 10
- Apartment C
See Page 12
- Apartment D1
See Page 14
- Apartment D2
See Page 16
- Vermont
See Page 18
- Halston
See Page 20
- Carlton DA
See Page 22
- Fulton
See Page 24
- Leawood
See Page 26
- Larchwood
See Page 28
- Leyton
See Page 30
- Riverwood
See Page 32
- Maplewood
See Page 34
- Langwood
See Page 36
- Lockwood
See Page 38
- Elmford
See Page 40
- Castleford
See Page 42
- Thetford
See Page 44
- Affordable Housing

- Electrical Sub Station
- Bin Collection Point
- City Car Club
- EV Chargers
- S/S
- BCP
- CCC
- EV



The artist's impressions (computer-generated graphics) have been prepared for illustrative purposes and are indicative only. They do not form part of any contract, or constitute a representation or warranty. External appearance may be subject to variation upon completion of the project. Please note that the siteplan is not drawn to scale.

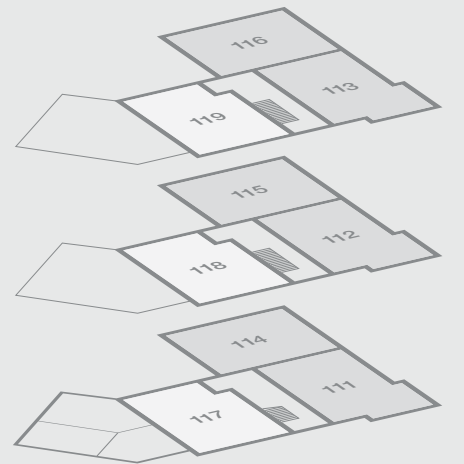
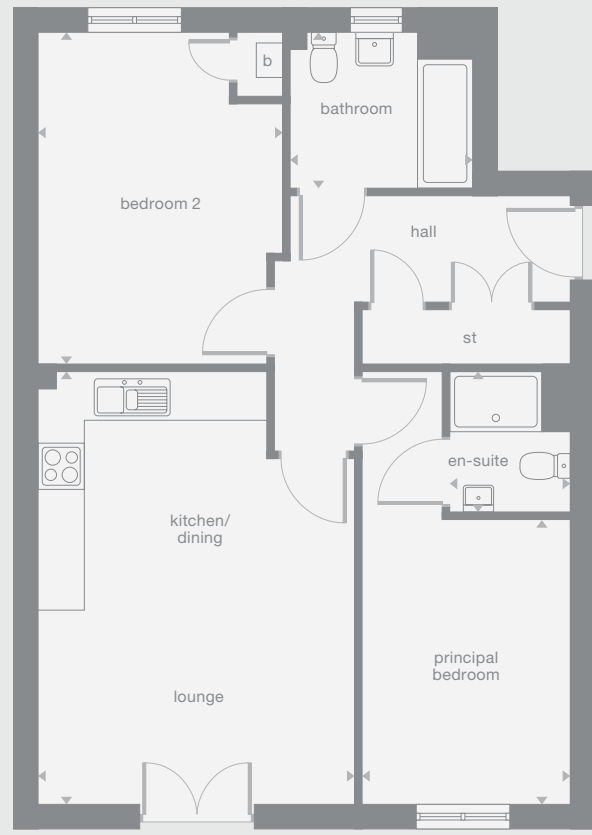
Apartment A

Overview
 Stylish french doors enhance the beautiful, welcoming open plan living area. With an en-suite principal bedroom, this is an impressive, practical base for contemporary living. There are Juliette balconies on the first and second floor apartments.

Dimensions
 Lounge/Kitchen/Dining
 4.12m x 5.69m
 13'6" x 18'8"
 Principal Bedroom
 2.68m x 3.73m
 8'10" x 12'3"
 En-Suite
 1.54m x 1.85m
 5'1" x 6'1"
 Bedroom 2
 3.17m x 4.36m
 10'5" x 14'4"
 Bathroom
 2.34m x 2.06m
 7'8" x 6'9"

Floor Space
 731 sq ft

b Boiler
 Plots may be a mirror image of the floor plans. Please see Development Sales Manager for details



Photography/CGI represents typical Miller Homes' interiors and exteriors. Please note elevational treatments may vary. All plans in this brochure are not drawn to scale and are for illustrative purposes only. Consequently, they do not form part of any contract. Room layouts are provisional and may be subject to alteration. Please refer to the 'Important Notice' section at the back of this brochure for more information.

Apartment B

Overview

The practical open plan living area features dual aspect french doors that transform the room into a light-filled, inspiring setting for entertaining.

Dimensions

Lounge/Kitchen/Dining
7.14m x 4.18m
23'5" x 13'9"

Principal Bedroom
2.69m x 3.20m
8'10" x 10'6"

En-Suite
1.47m x 1.98m
4'10" x 6'6"

Bedroom 2
4.26m x 2.64m
14'0" x 8'8"

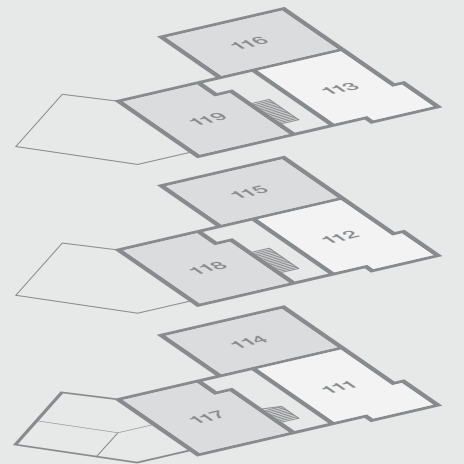
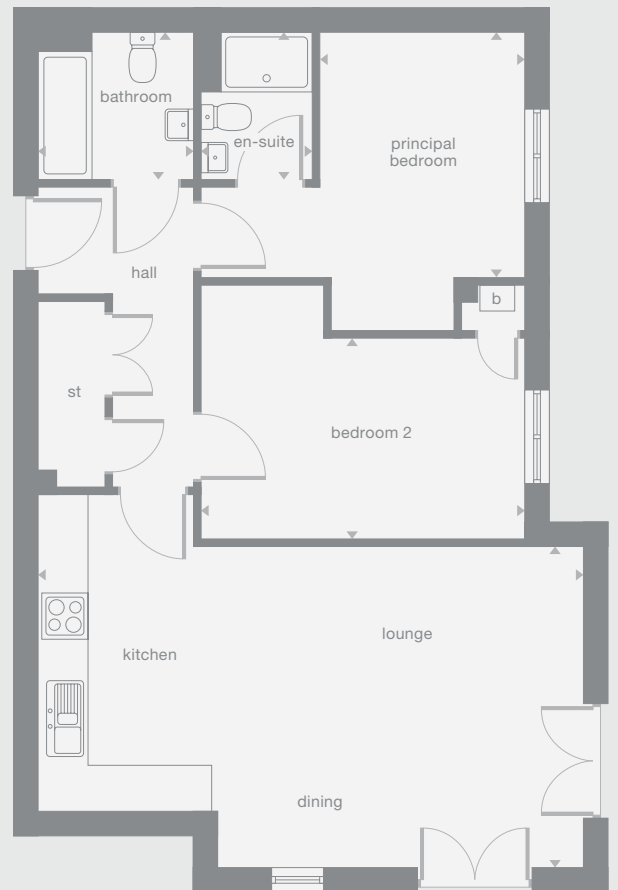
Bathroom
2.01m x 1.98m
6'7" x 6'6"

Floor Space

774 sq ft

b Boiler

Plots may be a mirror image of the floor plans. Please see Development Sales Manager for details



Photography/CGI represents typical Miller Homes' interiors and exteriors. Please note elevational treatments may vary. All plans in this brochure are not drawn to scale and are for illustrative purposes only. Consequently, they do not form part of any contract. Room layouts are provisional and may be subject to alteration. Please refer to the 'Important Notice' section at the back of this brochure for more information.

Apartment C

Overview
 The corner dual aspect windows are complemented by french doors, bringing an airy ambience to the living area where the layout subtly separates the kitchen and leisure spaces. The principal bedroom is en-suite.

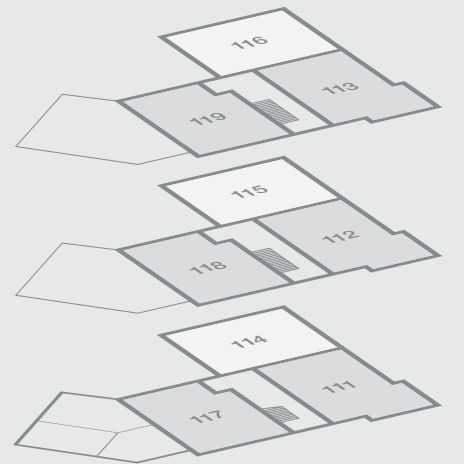
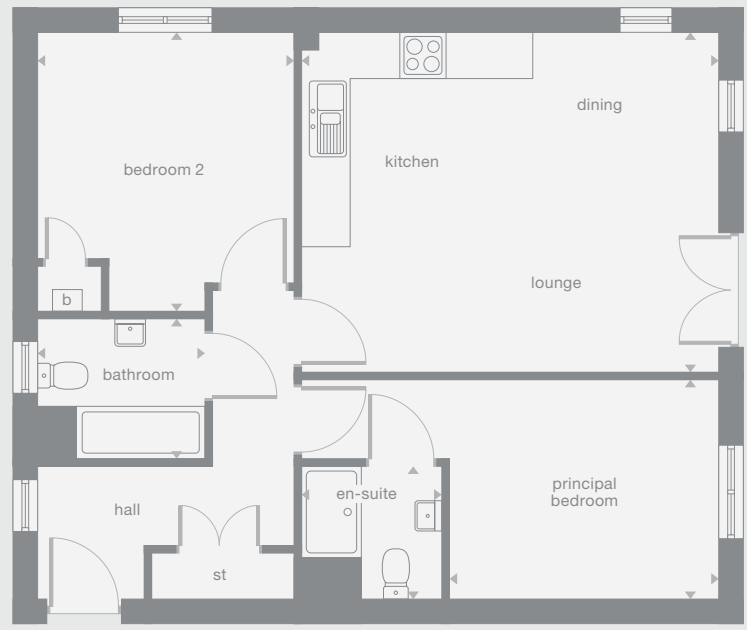
- Dimensions**
 Lounge/Kitchen/Dining
 5.49m x 4.46m
 18'0" x 14'8"
- Principal Bedroom**
 3.55m x 2.84m
 11'8" x 9'4"
- En-Suite**
 1.84m x 1.73m
 6'0" x 5'8"
- Bedroom 2**
 3.33m x 3.65m
 10'11" x 12'0"
- Bathroom**
 2.19m x 1.89m
 7'3" x 6'3"

Floor Space

718 sq ft



b Boiler
 Plots may be a mirror image of the floor plans. Please see Development Sales Manager for details



Photography/CGI represents typical Miller Homes' interiors and exteriors. Please note elevational treatments may vary. All plans in this brochure are not drawn to scale and are for illustrative purposes only. Consequently, they do not form part of any contract. Room layouts are provisional and may be subject to alteration. Please refer to the 'Important Notice' section at the back of this brochure for more information.

Apartment D1

Overview

The superb open-plan living area features french doors, creating a wonderfully bright, open ambience. Practical touches include an en-suite bedroom and a utility cupboard in the hall. There are Juliette balconies on the first and second floor apartments.

Dimensions

Lounge/Kitchen/Dining
5.69m x 4.94m
18'8" x 16'3"

Principal Bedroom
3.52m x 3.50m
11'7" x 11'6"

En-Suite
2.10m x 1.52m
6'11" x 5'0"

Bedroom 2
2.69m x 4.17m
8'10" x 13'8"

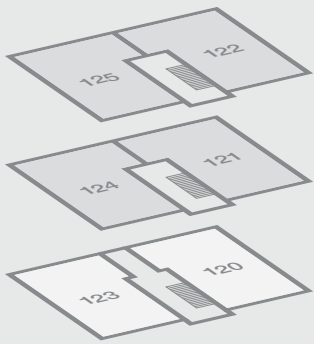
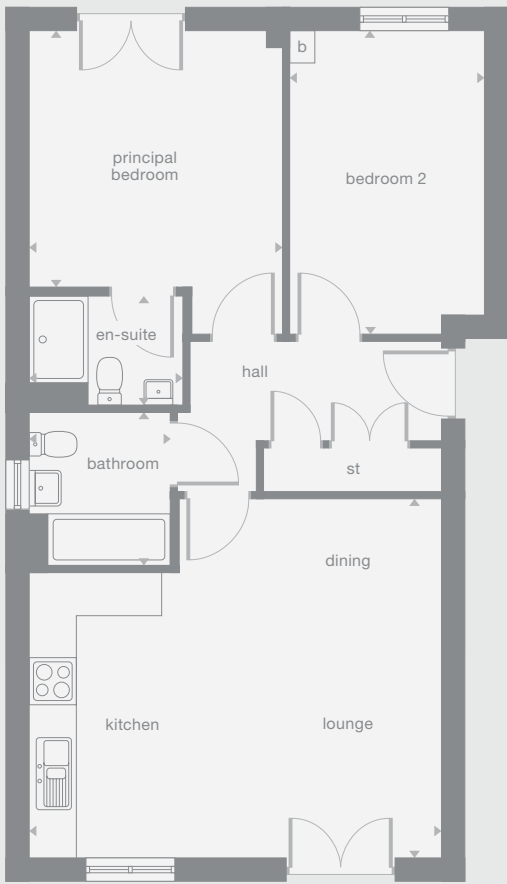
Bathroom
1.93m x 2.10m
6'4" x 6'11"

Floor Space

727 sq ft

b Boiler

Plots may be a mirror image of the floor plans. Please see Development Sales Manager for details



Photography/CGI represents typical Miller Homes' interiors and exteriors. Please note elevational treatments may vary. All plans in this brochure are not drawn to scale and are for illustrative purposes only. Consequently, they do not form part of any contract. Room layouts are provisional and may be subject to alteration. Please refer to the 'Important Notice' section at the back of this brochure for more information.

Apartment D2

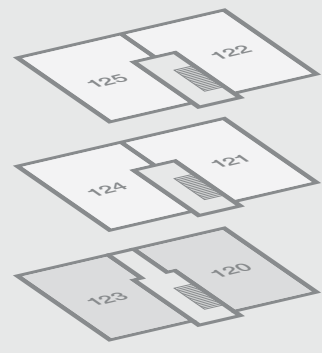
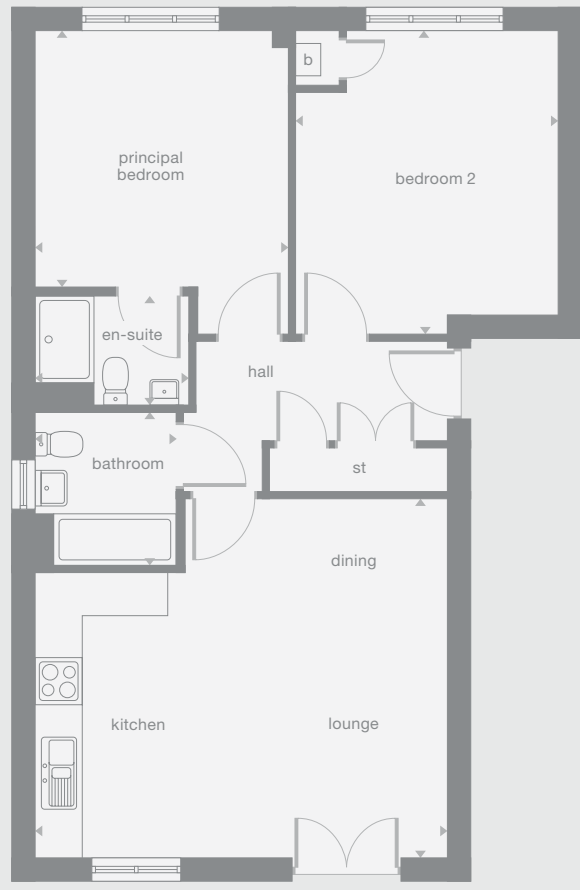
Overview
 The superb open-plan living area features french doors, creating a wonderfully bright, open ambience. Practical touches include an en-suite bedroom and a utility cupboard in the hall. There are Juliette balconies on the first and second floor apartments.

- Dimensions**
 Lounge/Kitchen/Dining
 5.69m x 4.94m
 18'8" x 16'3"
- Principal Bedroom**
 3.52m x 3.50m
 11'7" x 11'6"
- En-Suite**
 2.10m x 1.52m
 6'11" x 5'0"
- Bedroom 2**
 3.59m x 4.17m
 11'10" x 13'8"
- Bathroom**
 1.93m x 2.10m
 6'4" x 6'11"

Floor Space
 765 sq ft



b Boiler
 Plots may be a mirror image of the floor plans. Please see Development Sales Manager for details



Photography/CGI represents typical Miller Homes' interiors and exteriors. Please note elevational treatments may vary. All plans in this brochure are not drawn to scale and are for illustrative purposes only. Consequently, they do not form part of any contract. Room layouts are provisional and may be subject to alteration. Please refer to the 'Important Notice' section at the back of this brochure for more information.

Overview

The contemporary, open design of the living room, with its integrated staircase, maximises the sense of space, and the built-in storage includes a useful cupboard in the principal bedroom. The second bedroom, ideal for guests, could also become a useful home office.

Ground Floor

Lounge
4.39m x 3.96m
14'5" x 13'0"

Kitchen
3.17m x 2.74m
10'5" x 9'0"

WC
1.08m x 2.45m
3'7" x 8'1"

First Floor

Principal Bedroom
4.39m x 2.51m
14'5" x 8'3"

Bedroom 2
4.40m x 2.15m
14'5" x 7'1"

Bathroom
2.07m x 1.94m
6'10" x 6'5"

Floor Space

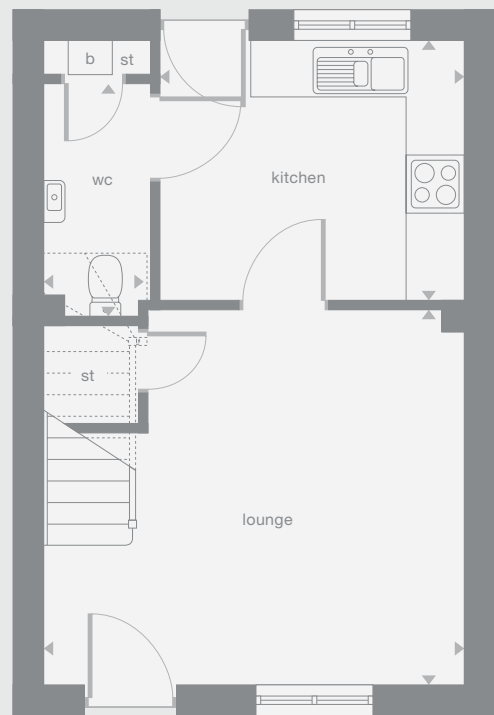
650 sq ft

b Boiler

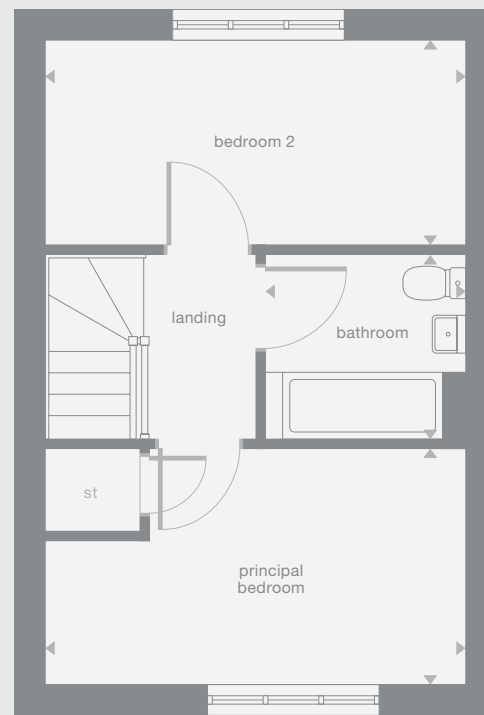
Plots may be a mirror image of the floor plans. Please see Development Sales Manager for details



Ground Floor



First Floor



Photography/CGI represents typical Miller Homes' interiors and exteriors. Please note elevational treatments may vary. All plans in this brochure are not drawn to scale and are for illustrative purposes only. Consequently, they do not form part of any contract. Room layouts are provisional and may be subject to alteration. Please refer to the 'Important Notice' section at the back of this brochure for more information.

Halston

Overview

Designed for maximum practicality and convenience, the kitchen shares the ground floor with a living and dining room where french doors opening to the garden fill the interior with fresh, natural light. In addition to the storage space in the principal bedroom, there are useful cupboards in the hall and under the stairs.

Ground Floor

Dining/Living
4.24m x 3.28m
13'11" x 10'9"

Kitchen
2.27m x 3.44m
7'6" x 11'4"

WC
2.18m x 1.12m
7'2" x 3'8"

First Floor

Principal Bedroom
4.27m x 2.48m
14'0" x 8'2"

Bedroom 2
2.00m x 3.46m
6'7" x 11'4"

Bedroom 3
2.21m x 2.26m
7'3" x 7'5"

Bathroom
2.11m x 1.93m
6'11" x 6'4"

Floor Space

750 sq ft

b Boiler

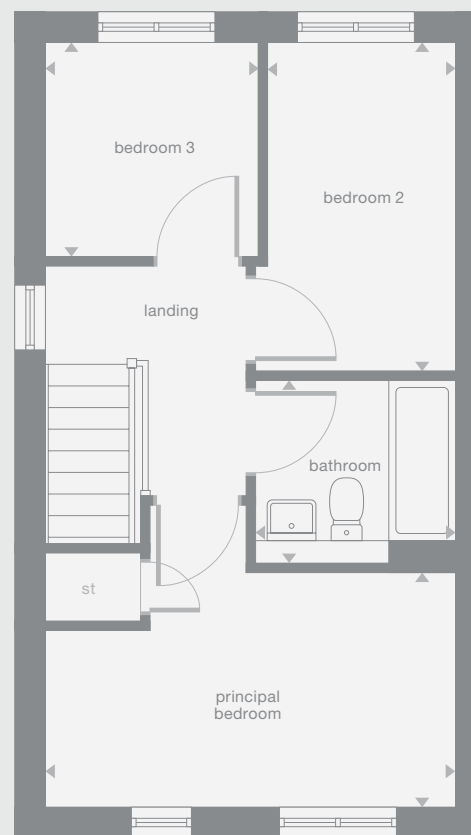
Plots may be a mirror image of the floor plans. Please see Development Sales Manager for details



Ground Floor



First Floor



Photography/CGI represents typical Miller Homes' interiors and exteriors. Please note elevational treatments may vary. All plans in this brochure are not drawn to scale and are for illustrative purposes only. Consequently, they do not form part of any contract. Room layouts are provisional and may be subject to alteration. Please refer to the 'Important Notice' section at the back of this brochure for more information.

Carlton DA

Overview

The impact of natural, welcoming light created by the triple-windowed, dual aspect lounge is further enhanced by the dual aspect kitchen with its french doors adding a focal point to the dining area. The principal bedroom, with its en-suite facilities, presents a private retreat with a dash of luxury.

Ground Floor

Lounge
3.05m x 5.39m
10'0" x 17'10"

Kitchen/Dining
2.24m x 5.39m
7'4" x 17'10"

Laundry
2.16m x 1.57m
7'1" x 5'2"

WC
1.10m x 2.04m
3'8" x 6'9"

First Floor

Principal Bedroom
3.08m x 3.18m
10'1" x 10'5"

En-Suite
1.96m x 1.69m
6'5" x 5'7"

Bedroom 2
2.46m x 2.89m
8'1" x 9'6"

Bedroom 3
2.46m x 2.43m
8'1" x 8'0"

Bathroom
1.87m x 2.11m
6'2" x 6'11"

Floor Space

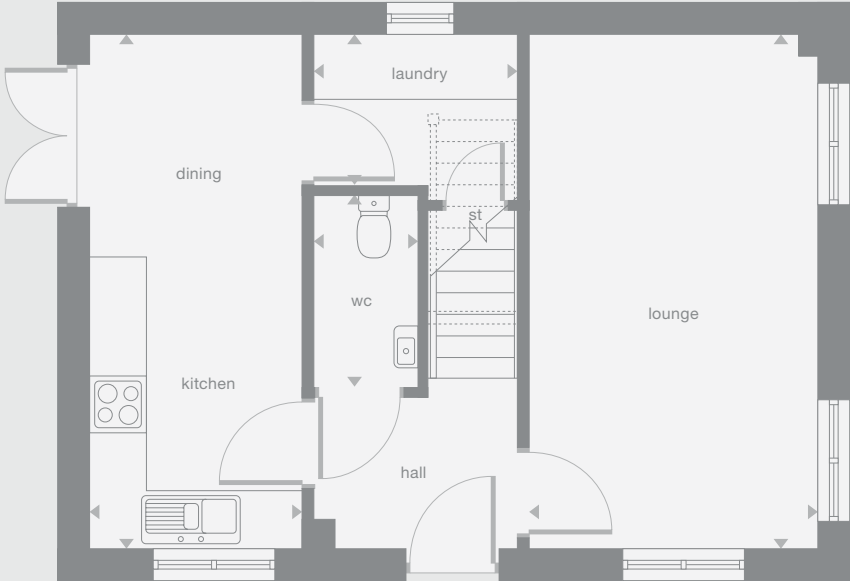
897 sq ft

b Boiler

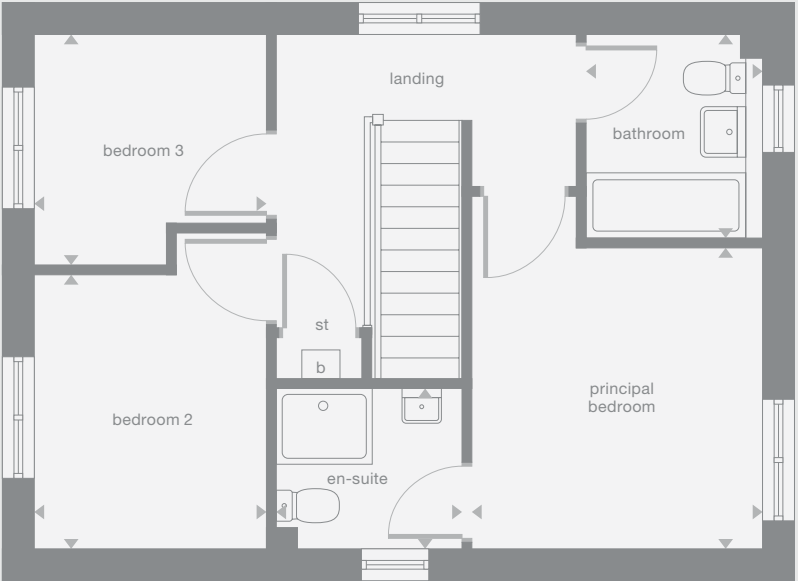
Plots may be a mirror image of the floor plans. Please see Development Sales Manager for details



Ground Floor



First Floor



Photography/CGI represents typical Miller Homes' interiors and exteriors. Please note elevational treatments may vary. All plans in this brochure are not drawn to scale and are for illustrative purposes only. Consequently, they do not form part of any contract. Room layouts are provisional and may be subject to alteration. Please refer to the 'Important Notice' section at the back of this brochure for more information.

Overview

The lounge opens, through a separate lobby, into a beautifully designed kitchen and dining room where french doors keep the room light and airy, and make outdoor meals a tempting option. One of the three bedrooms features an en-suite shower, and there is a useful storage cupboard on the landing.

Ground Floor

Lounge
3.98m x 3.87m
13'1" x 12'8"

Kitchen/Dining
5.05m x 2.99m
16'7" x 9'10"

WC
1.88m x 1.17m
6'2" x 3'10"

First Floor

Principal Bedroom
2.88m x 3.59m
9'6" x 11'10"

En-Suite
2.29m x 1.42m
7'6" x 4'8"

Bedroom 2
2.92m x 2.92m
9'7" x 9'7"

Bedroom 3
2.26m x 2.43m
7'5" x 8'0"

Bathroom
2.10m x 1.70m
6'11" x 5'7"

Floor Space

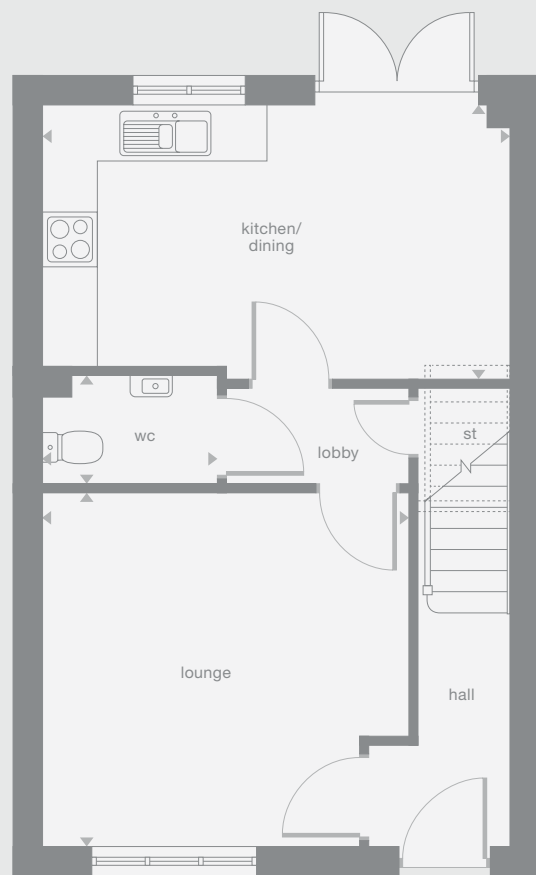
900 sq ft

b Boiler

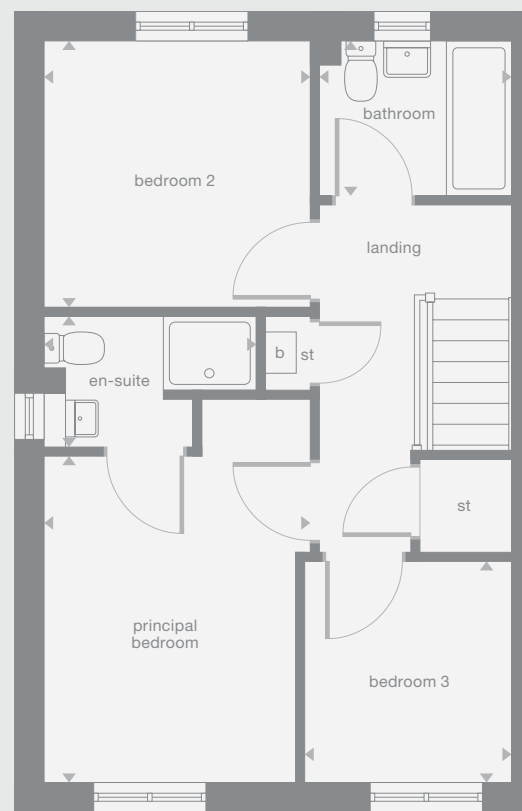
Plots may be a mirror image of the floor plans. Please see Development Sales Manager for details



Ground Floor



First Floor



Photography/CGI represents typical Miller Homes' interiors and exteriors. Please note elevational treatments may vary. All plans in this brochure are not drawn to scale and are for illustrative purposes only. Consequently, they do not form part of any contract. Room layouts are provisional and may be subject to alteration. Please refer to the 'Important Notice' section at the back of this brochure for more information.

Leawood

Overview

With a separate laundry to prevent household management from encroaching on the social space, and french doors adding a bright focal point, the kitchen provides a natural hub for everyday family life. With four bedrooms, one of them en-suite, there is always an opportunity to find peaceful seclusion.

Ground Floor

- Lounge**
3.12m x 5.01m
10'3" x 16'5"
- Kitchen/Dining**
4.79m x 2.93m
15'9" x 9'8"
- Laundry**
2.01m x 1.74m
6'7" x 5'9"
- WC**
2.01m x 1.05m
6'7" x 3'5"

First Floor

- Principal Bedroom**
4.06m x 2.51m
13'4" x 8'3"
- En-Suite**
1.64m x 2.01m
5'5" x 6'7"
- Bedroom 2**
2.52m x 3.96m
8'3" x 13'0"
- Bedroom 3**
2.32m x 3.34m
7'7" x 11'0"
- Bedroom 4**
2.32m x 3.34m
7'7" x 11'0"
- Bathroom**
2.07m x 2.20m
6'10" x 7'3"

Floor Space

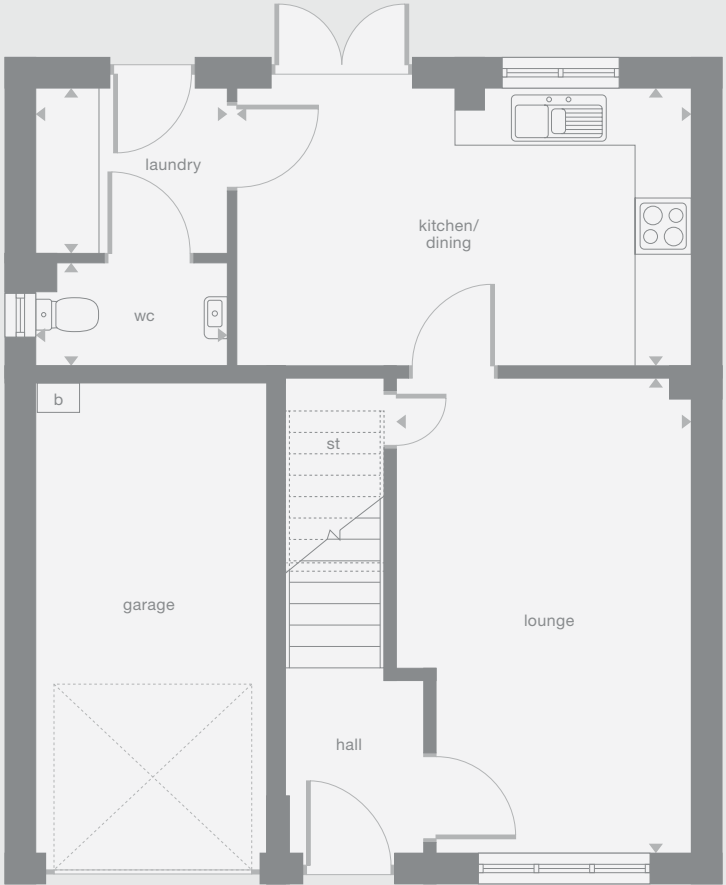
1,036 sq ft

b Boiler

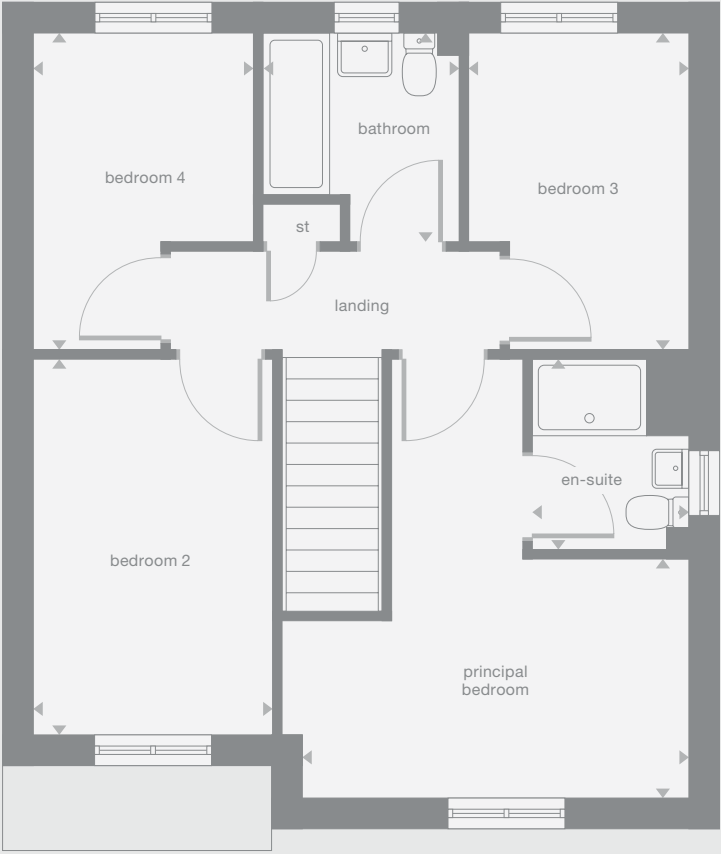
Plots may be a mirror image of the floor plans. Please see Development Sales Manager for details



Ground Floor



First Floor



Photography/CGI represents typical Miller Homes' interiors and exteriors. Please note elevational treatments may vary. All plans in this brochure are not drawn to scale and are for illustrative purposes only. Consequently, they do not form part of any contract. Room layouts are provisional and may be subject to alteration. Please refer to the 'Important Notice' section at the back of this brochure for more information.

Larchwood

Overview

French doors add a focal point to the living and dining room, while the adjoining kitchen keeps cooking and household management separate from the social space without any loss of convenience. The principal bedroom incorporates an en-suite shower, and the fourth bedroom could become a useful home office.

Ground Floor

Living/Dining
3.49m x 6.36m
11'6" x 20'10"

Kitchen
2.60m x 3.44m
8'7" x 11'4"

WC
1.98m x 1.12m
6'6" x 3'8"

First Floor

Principal Bedroom
3.10m x 4.41m
10'2" x 14'6"

En-Suite
2.27m x 1.25m
7'6" x 4'1"

Bedroom 2
3.01m x 3.43m
9'11" x 11'3"

Bedroom 3
2.60m x 3.25m
8'7" x 10'8"

Bedroom 4
2.39m x 2.98m
7'10" x 9'10"

Bathroom
1.88m x 2.16m
6'2" x 7'1"

Floor Space

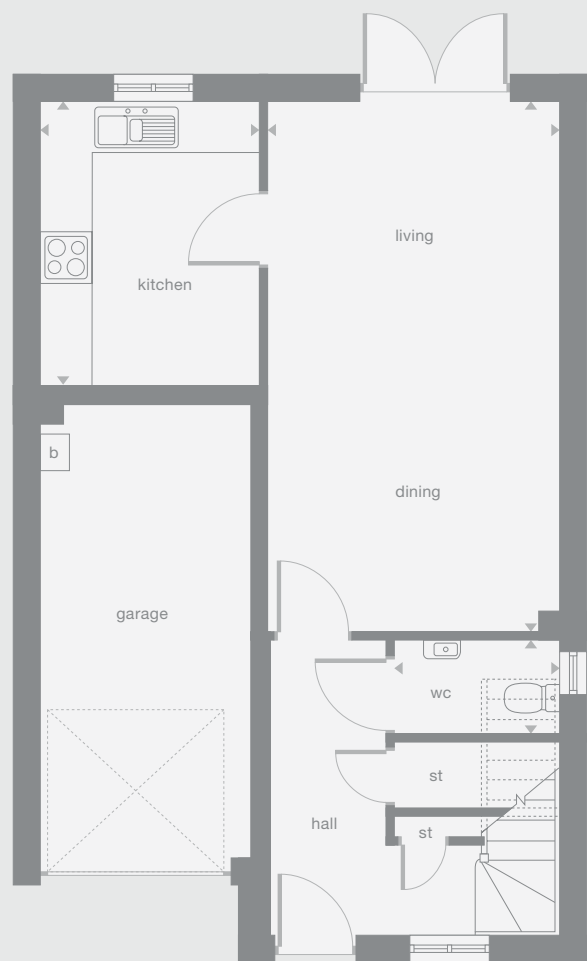
1,119 sq ft

b Boiler

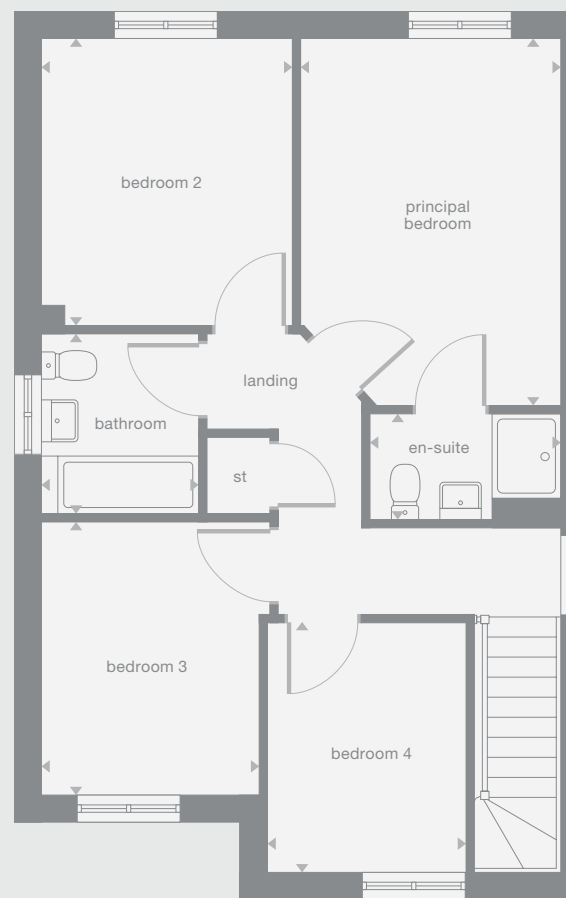
Plots may be a mirror image of the floor plans. Please see Development Sales Manager for details



Ground Floor



First Floor



Photography/CGI represents typical Miller Homes' interiors and exteriors. Please note elevational treatments may vary. All plans in this brochure are not drawn to scale and are for illustrative purposes only. Consequently, they do not form part of any contract. Room layouts are provisional and may be subject to alteration. Please refer to the 'Important Notice' section at the back of this brochure for more information.

Leyton

Overview

The stylishly ergonomic walkthrough kitchen and the bright dining room, opening out to the garden, makes innovative use of space to create an inspiring setting for family evenings, as well as an ideal backdrop to relaxed entertaining. The lounge shares the first floor with the en-suite principal bedroom.

Ground Floor

Kitchen
3.01m x 3.07m
9'11" x 10'1"

Family/Dining
4.11m x 3.66m
13'6" x 12'0"

WC
1.70m x 2.01m
5'7" x 6'7"

First Floor

Lounge
4.11m x 2.88m
13'6" x 9'6"

Principal Bedroom
4.12m x 3.12m
13'6" x 10'3"

En-Suite
1.38m x 1.71m
4'6" x 5'8"

Second Floor

Bedroom 2
4.12m x 3.14m
13'6" x 10'4"

Bedroom 3
4.15m x 2.91m
13'8" x 9'7"

Bathroom
1.53m x 2.70m
5'0" x 8'10"

Floor Space

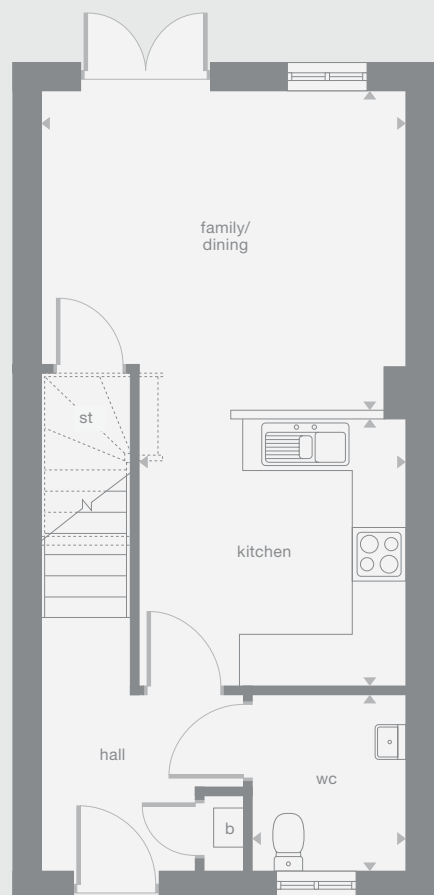
1,202 sq ft

b Boiler

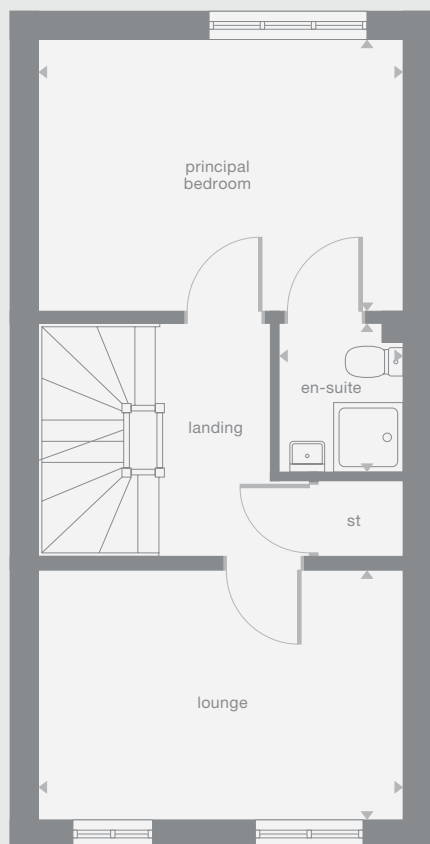
Plots may be a mirror image of the floor plans. Please see Development Sales Manager for details



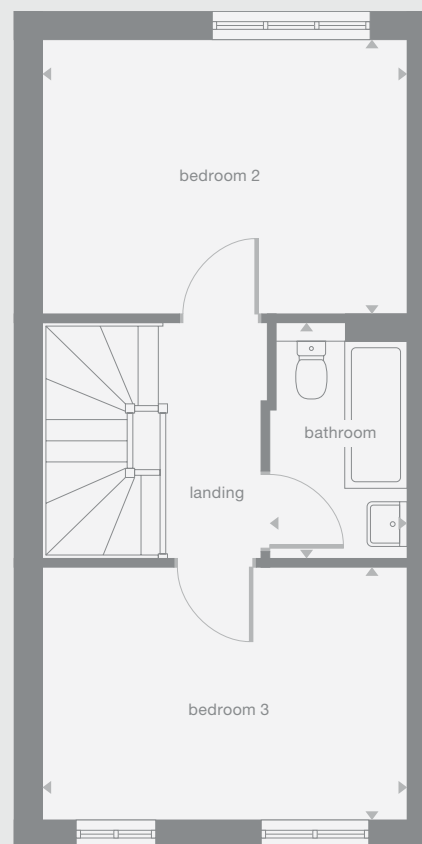
Ground Floor



First Floor



Second Floor



Photography/CGI represents typical Miller Homes' interiors and exteriors. Please note elevational treatments may vary. All plans in this brochure are not drawn to scale and are for illustrative purposes only. Consequently, they do not form part of any contract. Room layouts are provisional and may be subject to alteration. Please refer to the 'Important Notice' section at the back of this brochure for more information.

Riverwood

Overview

The open, flexible layout of the kitchen and dining room, with its french doors and convenient self-contained laundry space, offers both a relaxed family area and a convivial backdrop to entertaining. The principal bedroom is en-suite, and the fourth bedroom could become a useful home office.

Ground Floor

Lounge
3.57m x 4.56m
11'9" x 15'0"

Kitchen/Family/Dining
6.47m x 4.51m
21'3" x 14'10"

Laundry
1.59m x 0.97m
5'3" x 3'2"

WC
1.07m x 2.09m
3'6" x 6'10"

First Floor

Principal Bedroom
3.52m x 3.03m
11'7" x 9'11"

En-Suite
2.41m x 1.21m
7'11" x 4'0"

Bedroom 2
2.84m x 3.78m
9'4" x 12'5"

Bedroom 3
3.52m x 2.48m
11'7" x 8'2"

Bedroom 4
2.84m x 2.09m
9'4" x 6'10"

Bathroom
2.41m x 2.16m
7'11" x 7'1"

Floor Space

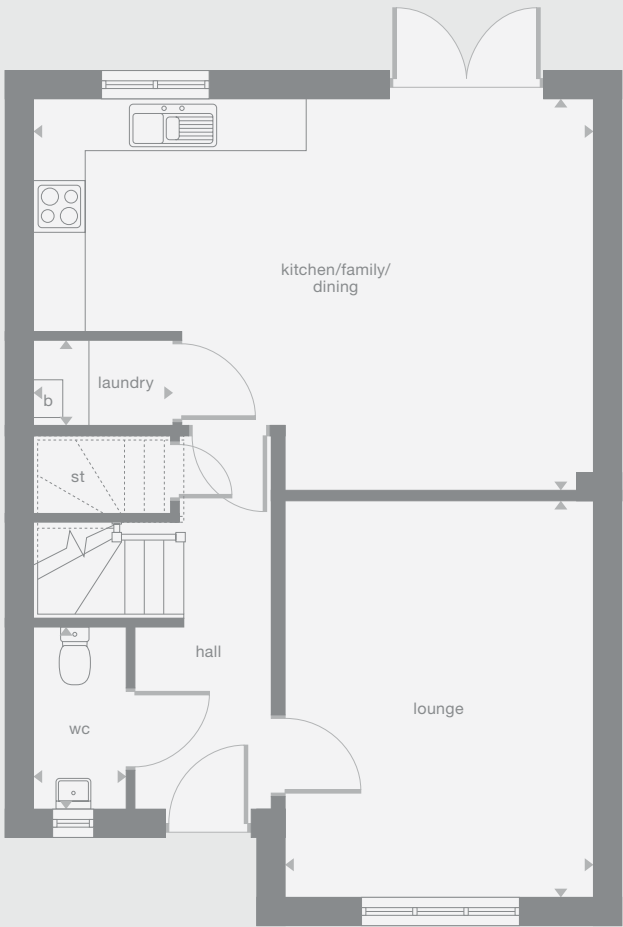
1,219 sq ft

b Boiler

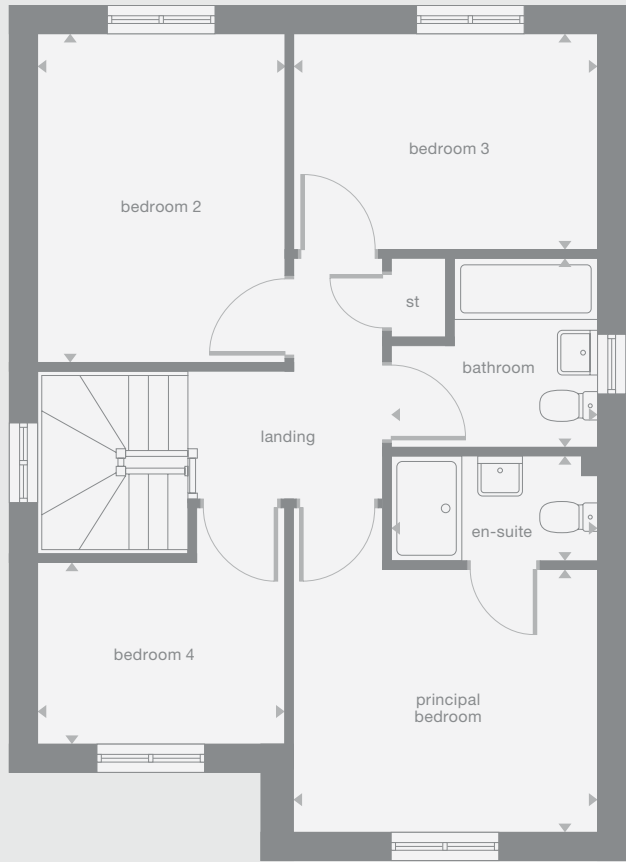
Plots may be a mirror image of the floor plans. Please see Development Sales Manager for details



Ground Floor



First Floor



Photography/CGI represents typical Miller Homes' interiors and exteriors. Please note elevational treatments may vary. All plans in this brochure are not drawn to scale and are for illustrative purposes only. Consequently, they do not form part of any contract. Room layouts are provisional and may be subject to alteration. Please refer to the 'Important Notice' section at the back of this brochure for more information.

Maplewood

Overview
 With twin windows and central french doors, the kitchen and dining room maximises the benefits of the garden to present an adaptable, comfortable setting for family life. The lounge features a stylish bay window, and the delightful principal bedroom includes an en-suite shower and a sumptuous dressing area.

Ground Floor	First Floor	
Lounge 3.00m x 4.72m 9'10" x 15'6"	Principal Bedroom 5.01m x 2.80m 16'6" x 9'2"	Bedroom 3 2.43m x 4.22m 8'0" x 13'10"
Family/Dining/Kitchen 8.14m x 2.80m 26'9" x 9'2"	En-Suite 2.63m x 1.23m 8'8" x 4'0"	Bedroom 4 3.06m x 3.00m 10'1" x 9'10"
Laundry 1.77m x 1.28m 5'10" x 4'3"	Dressing 2.63m x 1.38m 8'8" x 4'7"	Bathroom 2.44m x 3.00m 8'0" x 9'10"
WC 1.46m x 1.77m 4'10" x 5'10"	Bedroom 2 3.02m x 4.01m 9'11" x 13'2"	

Floor Space
 1,297 sq ft

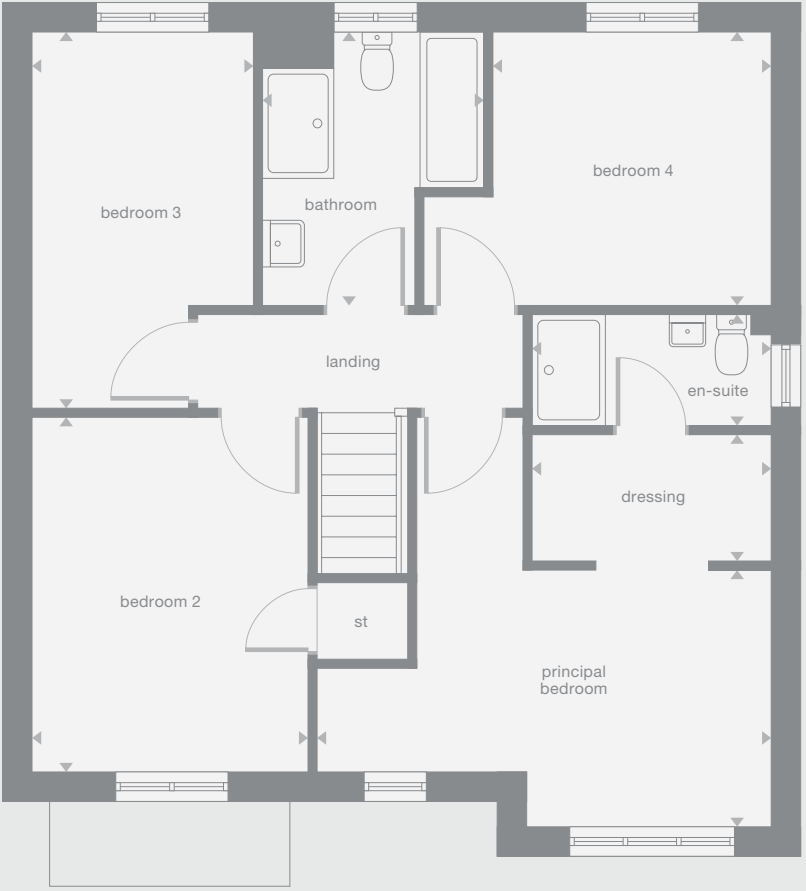


b Boiler
 Plots may be a mirror image of the floor plans. Please see Development Sales Manager for details

Ground Floor



First Floor



Photography/CGI represents typical Miller Homes' interiors and exteriors. Please note elevational treatments may vary. All plans in this brochure are not drawn to scale and are for illustrative purposes only. Consequently, they do not form part of any contract. Room layouts are provisional and may be subject to alteration. Please refer to the 'Important Notice' section at the back of this brochure for more information.

Langwood

Overview

A bay window and double doors give the lounge a classic elegance that complements the bright, relaxed family kitchen and dining room with its feature french doors. There is a separate laundry room and a study, and the four bedrooms include a luxurious L-shaped en-suite principal bedroom.

Ground Floor

- Lounge**
3.04m x 5.51m
10'0" x 18'1"
- Kitchen/Dining/Family**
7.97m x 3.01m
26'2" x 9'11"
- Laundry**
1.64m x 1.71m
5'5" x 5'7"
- Study**
2.65m x 2.33m
8'9" x 7'8"
- WC**
2.65m x 1.24m
8'9" x 4'1"

First Floor

- Principal Bedroom**
5.30m x 2.96m
17'5" x 9'9"
- En-Suite**
1.52m x 2.20m
5'0" x 7'3"
- Dressing**
1.44m x 1.49m
4'9" x 4'11"
- Bedroom 2**
2.56m x 3.85m
8'5" x 12'8"
- Bedroom 3**
2.56m x 3.79m
8'5" x 12'5"
- Bedroom 4**
2.51m x 2.38m
8'3" x 7'10"
- Bathroom**
2.69m x 1.91m
8'10" x 6'3"

Floor Space

1,349 sq ft

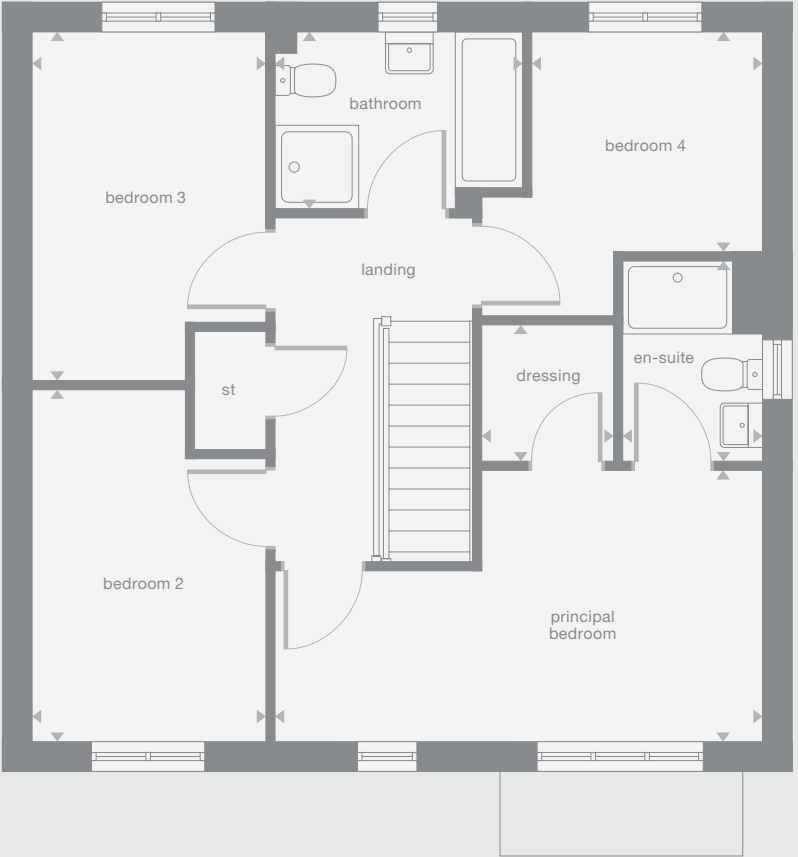
b Boiler
Plots may be a mirror image of the floor plans. Please see Development Sales Manager for details



Ground Floor



First Floor



Photography/CGI represents typical Miller Homes' interiors and exteriors. Please note elevational treatments may vary. All plans in this brochure are not drawn to scale and are for illustrative purposes only. Consequently, they do not form part of any contract. Room layouts are provisional and may be subject to alteration. Please refer to the 'Important Notice' section at the back of this brochure for more information.

Lockwood

Overview

The elegantly proportioned exterior reflects the immense prestige of this exceptional family home. From the lounge's bay window to the feature staircase with half landing, from the french doors of the dining room to the en-suite showers in two of the four bedrooms, comfort is combined with visual appeal.

Ground Floor

Lounge
3.63m x 5.85m
11'11" x 19'3"

Kitchen/Dining/Family
6.20m x 4.22m
20'4" x 13'10"

Laundry
1.81m x 2.73m
6'0" x 9'0"

WC
1.81m x 1.38m
6'0" x 4'7"

First Floor

Principal bedroom
3.46m x 4.01m
11'4" x 13'2"

En-Suite 1
1.98m x 1.67m
6'6" x 5'6"

Bedroom 2
3.49m x 3.17m
11'5" x 10'5"

En-Suite 2
2.33m x 1.91m
7'8" x 6'3"

Bedroom 3
2.47m x 3.17m
8'1" x 10'5"

Bedroom 4
2.47m x 2.93m
8'2" x 9'8"

Bathroom
1.95m x 3.17m
6'5" x 10'5"

Floor Space

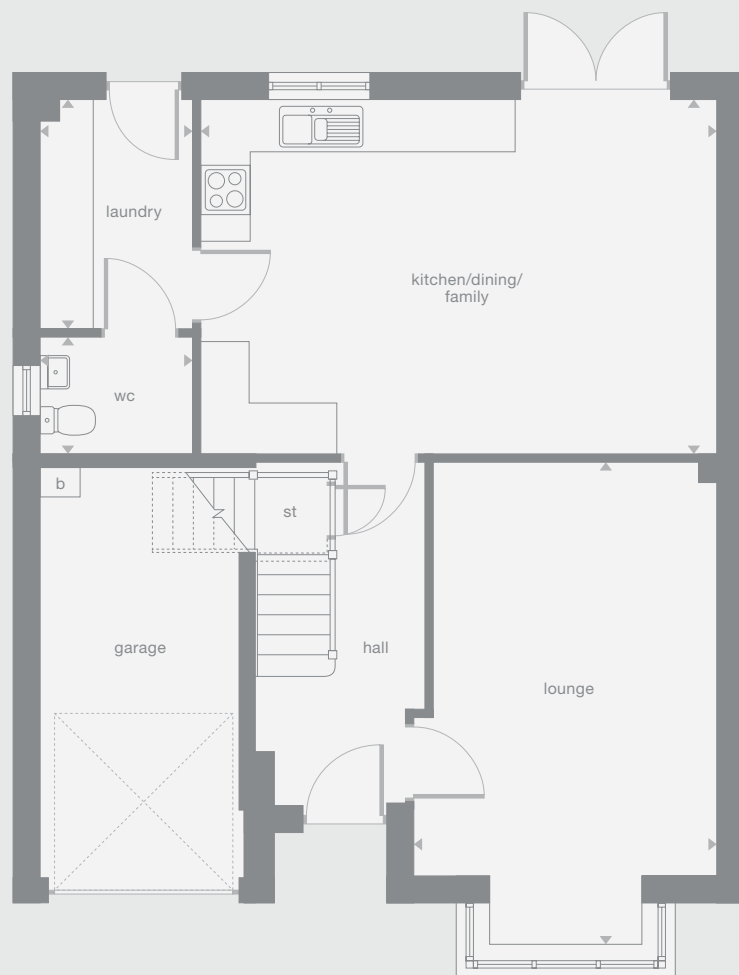
1,446 sq ft

b Boiler

Plots may be a mirror image of the floor plans. Please see Development Sales Manager for details



Ground Floor



First Floor



Photography/CGI represents typical Miller Homes' interiors and exteriors. Please note elevational treatments may vary. All plans in this brochure are not drawn to scale and are for illustrative purposes only. Consequently, they do not form part of any contract. Room layouts are provisional and may be subject to alteration. Please refer to the 'Important Notice' section at the back of this brochure for more information.

Elmford

Overview
 Double doors open to combine the lounge, dining room and kitchen into a single space from bay window to french doors, an unforgettable setting for relaxed social gatherings. With five bedrooms, two of which have en-suite showers, this is a home capable of accommodating the largest family in comfort and privacy.

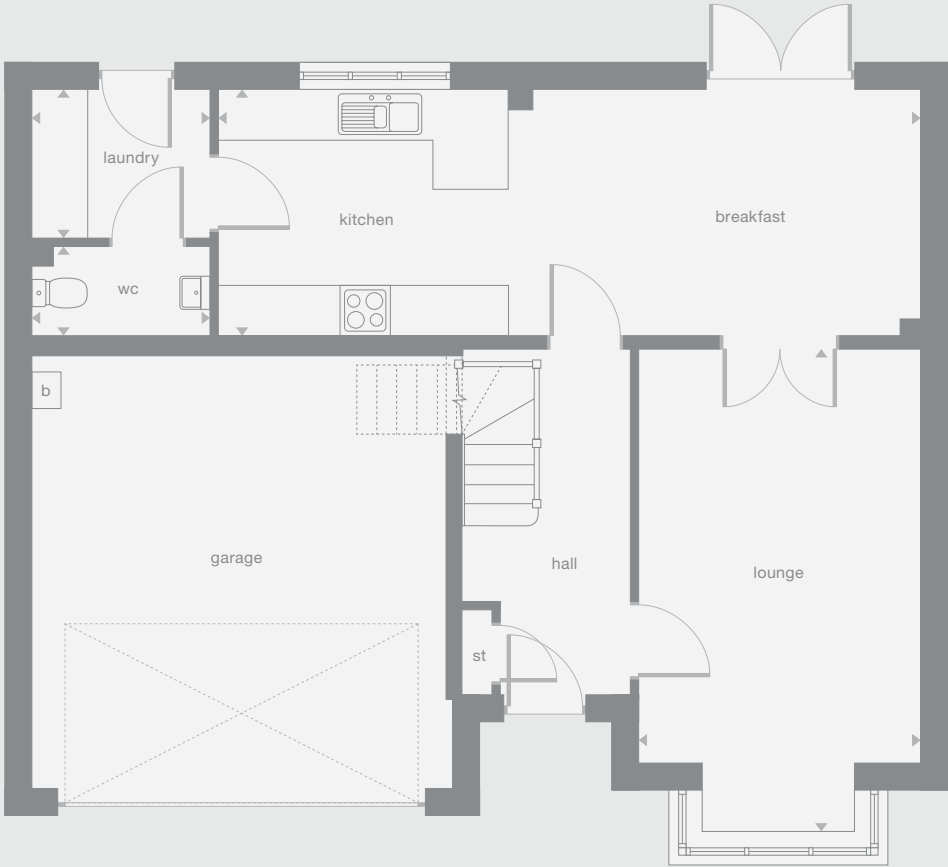
Ground Floor	First Floor	
Lounge 3.38m x 5.86m 11'1" x 19'3"	Principal Bedroom 3.38m x 3.54m 11'1" x 11'8"	Bedroom 3 3.38m x 3.12m 11'1" x 10'3"
Kitchen/Breakfast 8.44m x 2.94m 27'8" x 9'8"	Dressing 1.64m x 2.01m 5'5" x 6'7"	Bedroom 4 2.80m x 2.98m 9'2" x 9'10"
Laundry 2.12m x 1.78m 7'0" x 5'10"	En-Suite 1 2.32m x 1.21m 7'8" x 4'0"	Bedroom 5 3.10m x 1.99m 10'2" x 6'7"
WC 2.12m x 1.06m 7'0" x 3'6"	Bedroom 2 2.53m x 5.17m 8'4" x 17'0"	Bathroom 2.03m x 1.99m 6'8" x 6'7"
	En-Suite 2 1.84m x 1.99m 6'1" x 6'7"	

Floor Space
 1,510 sq ft

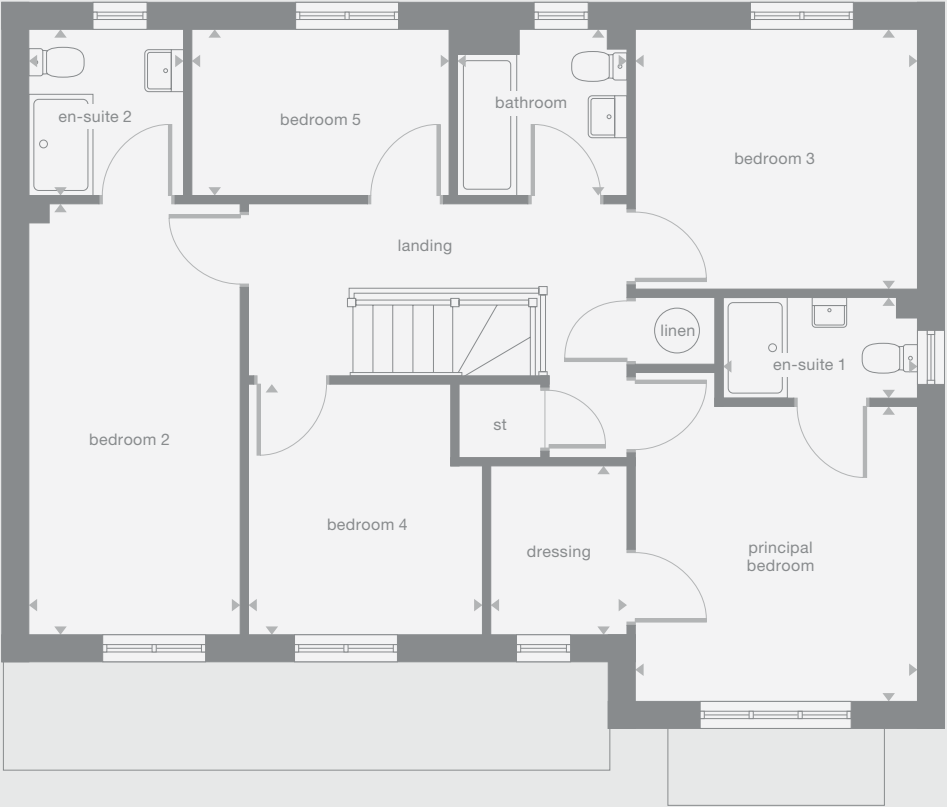
b Boiler
 Plots may be a mirror image of the floor plans. Please see Development Sales Manager for details



Ground Floor



First Floor



Photography/CGI represents typical Miller Homes' interiors and exteriors. Please note elevational treatments may vary. All plans in this brochure are not drawn to scale and are for illustrative purposes only. Consequently, they do not form part of any contract. Room layouts are provisional and may be subject to alteration. Please refer to the 'Important Notice' section at the back of this brochure for more information.

Castleford

Overview

From the lounge's traditional bay window to the striking natural lighting of the magnificent, open, dual aspect family kitchen and dining room, from the separate study to the five bedrooms, two of them en-suite, this is an impressively spacious and prestigious family home.

Ground Floor

Lounge 3.51m x 5.84m 11'6" x 19'2"	Study 3.01m x 2.04m 9'11" x 6'9"
Kitchen 3.03m x 2.82m 10'0" x 9'3"	Laundry 1.81m x 2.01m 5'11" x 6'7"
Dining 3.85m x 4.51m 12'8" x 14'10"	WC 1.10m x 2.01m 3'7" x 6'7"
Family 2.58m x 2.82m 8'6" x 9'3"	

First Floor

Principal Bedroom 3.51m x 5.21m 11'6" x 17'1"	Bedroom 3 3.54m x 2.59m 11'8" x 8'6"
En-Suite 1 1.42m x 2.21m 4'8" x 7'3"	Bedroom 4 2.58m x 2.59m 8'6" x 8'6"
Bedroom 2 2.94m x 3.28m 9'8" x 10'9"	Bedroom 5 3.14m x 1.79m 10'4" x 5'10"
En-Suite 2 1.71m x 2.42m 5'8" x 7'11"	Bathroom 1.92m x 2.53m 6'4" x 8'4"

Floor Space

1,601 sq ft

b Boiler

Plots may be a mirror image of the floor plans. Please see Development Sales Manager for details



Ground Floor



First Floor



Photography/CGI represents typical Miller Homes' interiors and exteriors. Please note elevational treatments may vary. All plans in this brochure are not drawn to scale and are for illustrative purposes only. Consequently, they do not form part of any contract. Room layouts are provisional and may be subject to alteration. Please refer to the 'Important Notice' section at the back of this brochure for more information.

Thetford

Overview

The traditional bay window gives the lounge an elegant appeal, complementing a superb L-shaped dining and family room that opens on to the garden, and extends into an ergonomically designed kitchen with a separate laundry room. Two of the five bedrooms are en-suite, and one features an impressive dedicated dressing room.

Ground Floor

Lounge
3.85m x 5.37m
12'8" x 17'8"

Kitchen
4.28m x 2.88m
14'1" x 9'6"

Family/Dining
4.18m x 5.29m
13'9" x 17'5"

Laundry
1.71m x 2.15m
5'8" x 7'1"

WC
1.17m x 1.78m
3'10" x 5'10"

First Floor

Principal Bedroom
4.14m x 4.01m
13'7" x 13'2"

Dressing
2.25m x 1.71m
7'3" x 5'8"

En-Suite 1
2.22m x 1.21m
7'4" x 4'0"

Bedroom 2
3.02m x 3.41m
9'11" x 11'2"

En-Suite 2
2.22m x 1.86m
7'4" x 6'1"

Bedroom 3
3.76m x 2.94m
12'4" x 9'8"

Bedroom 4
3.27m x 2.94m
10'9" x 9'8"

Bedroom 5
3.72m x 2.44m
12'3" x 8'0"

Bathroom
2.61m x 2.00m
8'7" x 6'7"

Floor Space

1,693 sq ft

b Boiler

Plots may be a mirror image of the floor plans. Please see Development Sales Manager for details



Ground Floor



First Floor



Photography/CGI represents typical Miller Homes' interiors and exteriors. Please note elevational treatments may vary. All plans in this brochure are not drawn to scale and are for illustrative purposes only. Consequently, they do not form part of any contract. Room layouts are provisional and may be subject to alteration. Please refer to the 'Important Notice' section at the back of this brochure for more information.

The Miller Difference

The Miller Difference
Every home we build is the start of an adventure. For more than 90 years we've watched people stamp their individual personalities on the homes we build. What we create is your starting point. Our job is to make sure it's the best one possible.

Shaped around you
For more than three generations, we've been listening to our customers. We know what you expect: the highest quality materials, the most skilled workmanship, ready to be shaped around your lifestyle.

Built on trust
Figures and statistics matter. We have, for example, a five star rating for Customer Satisfaction, the best possible, from the Home Builders Federation.

Even more important, though, is the feedback we get from our customers. After we've been with them on the journey from their first enquiry to settling into their new home, well over 90% say they would recommend us. That's the real measure of the trust they place in us.

Helping where we can
You might already have a clear picture of life in your new home. Or it might be a blank canvas. Either way, getting there is an exciting journey of discovery. And we're here to help.

From the first time you contact us, whether by phone, video call or a tour of a show home, we'll be listening carefully. Only you know what you want, but we'll be working with you to achieve it.

And we'll still be on hand, ready to help, long after you move in, quietly sharing your pride and satisfaction.

Pushing up standards
From beautiful locations and superb architectural design to meticulous construction work and exceptional finishes, our expertise is widely acknowledged. Our award-winning developments embrace state-of-the-art technologies and green thinking, but we never lose sight of the importance of craftsmanship. Every step is subject to rigorous Quality Assurance checks, and we reward our highly trained teams for safe and careful practice.

A smooth customer journey
Our award-winning service reflects the same high standards. As we guide you through your choices, decades of experience inform every step. So you can relax and enjoy the journey, knowing you have all the information you need.

With you every step of the way
After meeting your Development Sales Manager, who will help you choose and buy your new home, you'll be introduced to your Site Manager, who will be responsible for every aspect of the building work. They'll both be happy to answer any questions you have.

Fully involved
Your new home will quickly be moulded to your personal choices. So will our service. Once you tell us how you want to keep in touch, whether by phone, text, email, our custom designed app or via our website, that's how we'll keep you regularly updated and informed. You'll be able to access all the records of meetings, and see what happens next.

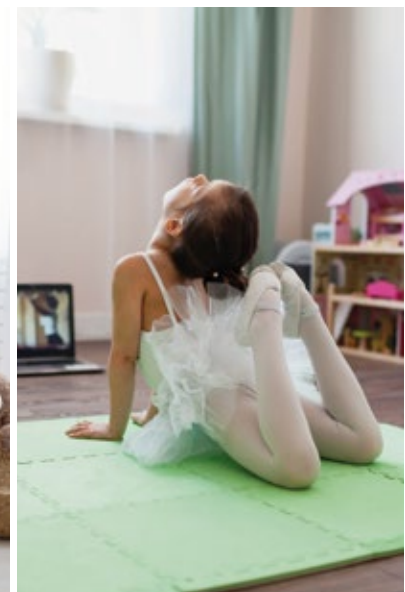
Make it your own
Even before you move in, there's the excitement of planning your interior. Choosing tiles and worktops, making decisions about appliances. We'll help wherever we can. Our Visualiser, for example, can help you make selections online then see them for real in the Sales Centre. Already, it's becoming your own, personal, space.

At a safe time during building, we'll invite you to visit your new home for a Progress Meeting where you can see the craftsmanship and attention to detail for yourself before it's covered up by fittings and finishes.

A place to grow
For us, the mark of success is seeing every home become unique, an individual reflection of the people who live there, and watching it become part of a thriving community.

By creating sustainable homes, in sustainable communities, we're helping to build a sustainable future for everyone. Including ourselves.

your home
your way...



Contact Us

For development opening times please refer to millerhomes.co.uk or call 03301 730 383

Sat Nav: EH12 0BD

The homes we build are the foundations of sustainable communities that will flourish for generations to come. We work in harmony with the natural environment, protecting and preserving it wherever we can. With our customers, colleagues and partners, we strive to promote better practices and ways of living. We're playing our part in making the world A Better Place.

a better place®



Registered Developer

Important Notice:
Although every care has been taken to ensure the accuracy of all the information given, the contents do not form part of any contract, or constitute a representation or warranty, and, as such, should be treated as a guide only. Interested parties should check with the Development Sales Manager and confirm all details with their solicitor. The developer reserves the right to amend the specification, as necessary, without prior notice, but to an equal or higher standard. Please note that items specified in literature and showhomes may depict appliances, fittings and decorative finishes that do not form part of the standard specification. The project is a new development which is currently under construction. Measurements provided have not been surveyed on-site. The measurements have been taken from architect's plans, and, as such, may be subject to variation during the course of construction. Not all the units described have been completed at the time of going to print and measurements and dimensions should be checked with the Development Sales Manager and confirmed with solicitors.

the place to be®

Why Miller Homes?

We've been building homes since 1934, that's three generations of experience. We've learned a lot about people and that's made a big difference to what we do and how we do it.

We're enormously proud of the homes we build, combining traditional craftsmanship with new ideas like low carbon technologies. The big difference is that we don't stop caring once we've finished the building, or when we've sold the house, or even once you've moved in. We're there when you need us, until you're settled, satisfied and inviting your friends round.



5 stars for customer satisfaction

Development Opening Times

Please see millerhomes.co.uk for development opening times or call 03301 730 383

Sat Nav: EH12 0BD

millerhomes.co.uk

millerhomes

the place to be®