

ANWYL
thoughtful homes

welcome to
Mill Green
Warton



01772 376 238
.....

everything considered.

Mill Green Warton

possible future
development

possible future
development

ANWYL
thoughtful homes



key



caernarfon



hartford



cheltenham



henley



ascot



lymm



snowdon



longford



bretton



affordable



everything considered.

This plan is a general site layout, not to scale and is intended for guidance only. It does not form any part of the contract. The plan does not show ownership boundaries, easements or wayleaves. Anwyl Homes reserve the right to alter or replan at any time. *Plot specific variants. Please ask our site homes advisor for specific plot details. Turf to rear gardens is not provided. 25/06/2021

ANWYL
thoughtful homes

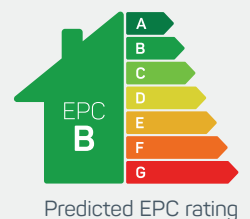


the bretton

3 bed semi detached

A 3 bedroom semi-detached home. *Perfect* as a family starter home or for first-time buyers. Key features include an open plan kitchen/diner and master bedroom with en-suite.

www.anwylhomes.co.uk





ideal for
first time buyers



ground floor

kitchen/dining	15'4" x 10'9"
living room	16'8" x 12'0"
cloaks	5'11" x 3'1"

kitchen/dining	4.67m x 3.28m
living room	5.08m x 3.66m
cloaks	1.79m x 0.95m

first floor

bedroom 1	12'10" x 8'4"
en-suite	8'4" x 5'6"
bedroom 2	11'0" x 8'4"
bedroom 3	7'7" x 6'8"
bathroom	7'2" x 6'8"

bedroom 1	3.91m x 2.53m
en-suite	2.53m x 1.67m
bedroom 2	3.35m x 2.53m
bedroom 3	2.30m x 2.04m
bathroom	2.18m x 2.02m

the bretton
3 bed semi detached

ANWYL
thoughtful homes

**NEW
HOMES
QUALITY
CODE**

**NEW HOMES
OMBUDSMAN
SERVICE**

www.anwylhomes.co.uk

Anwyl Homes is a Registered Developer with the NHQB. This is a computer-generated image of the bretton, elevation treatment may vary. Room sizes are approximate, dimensions are taken from the longest room point (please consult homes advisor for measurement points). Plots may be handed and any garages may be single or double. Kitchen and bathroom layouts are indicative. These plans are correct at the time of going to press, but may be subject to change during construction. Please ensure that you check for specific plot details. 01/11/22.

everything considered.

ANWYL
thoughtful homes

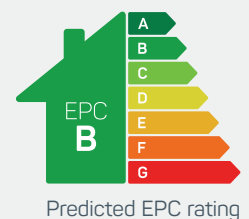


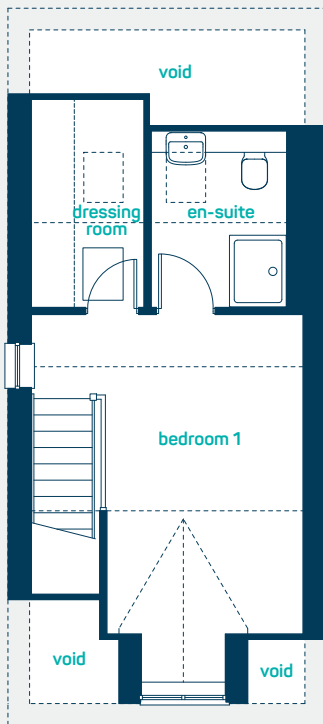
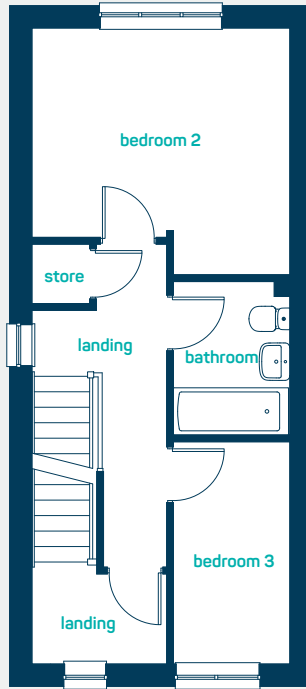
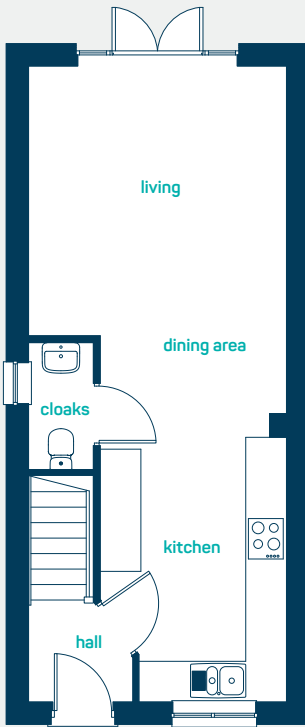
the snowdon

3 bed semi-detached

A 2.5 storey 3 bedroom semi-detached home. Key features include *open plan* kitchen, living and dining room with French doors to the rear, 3 bedrooms including master bedroom with en-suite, *dressing room* and separate family bathroom.

www.anwylhomes.co.uk





modern
open plan living

ground floor

kitchen/
dining/living 30'9" x 12'6"
cloaks 6'3" x 3'0"

kitchen/
dining/living 9.37m x 3.80m
cloaks 1.90m x 0.91m

first floor

bedroom 2 12'6" x 11'10"
bedroom 3 10'9" x 5'8"
bathroom 7'5" x 5'8"

bedroom 2 3.80m x 3.61m
bedroom 3 3.27m x 1.72m
bathroom 2.26m x 1.72m

second floor

bedroom 1 (inc dorma) 17'0" x 12'6"
dressing room 9'8" x 5'2"
en-suite 9'1" x 6'3"

bedroom 1 (inc dorma) 5.18m x 3.80m
dressing room 2.94m x 1.58m
en-suite 2.77m x 1.90m

the snowdon
3 bed semi-detached

ANWYL
thoughtful homes

**NEW
HOMES
QUALITY
CODE**

**NEW HOMES
OMBUDSMAN
SERVICE**

www.anwylhomes.co.uk

Anwyl Homes is a Registered Developer with the NHQB. This is a computer-generated image of the snowdon, elevation treatment may vary. Room sizes are approximate, dimensions are taken from the longest room point (please consult homes advisor for measurement points). Plots may be handed and any garages may be single or double. Kitchen and bathroom layouts are indicative. These plans are correct at the time of going to press, but may be subject to change during construction. Please ensure that you check for specific plot details. 01/11/22.

everything considered.

ANWYL
thoughtful homes

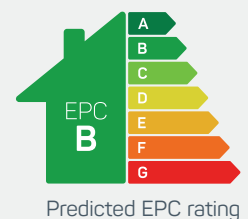


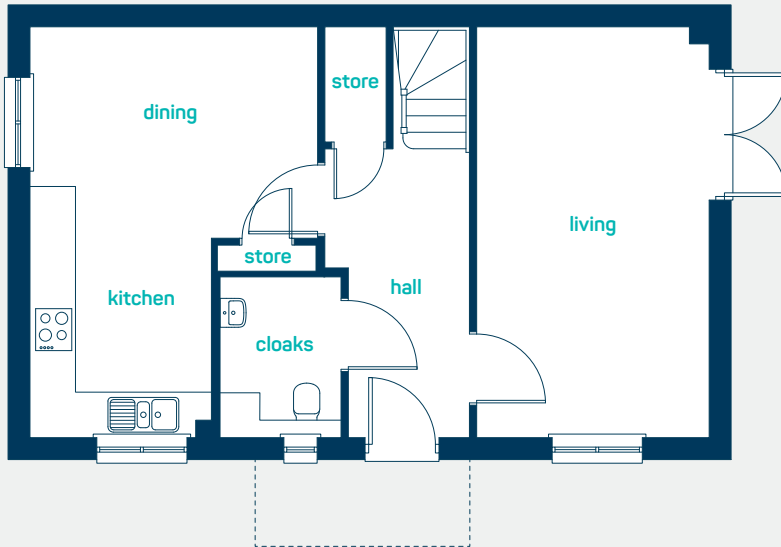
the longford

3 bed detached home

The longford is a stunning three bedroom home with an *extensive* downstairs space, perfect for entertaining. The upstairs boast two double bedrooms with en-suite to the master bedroom.

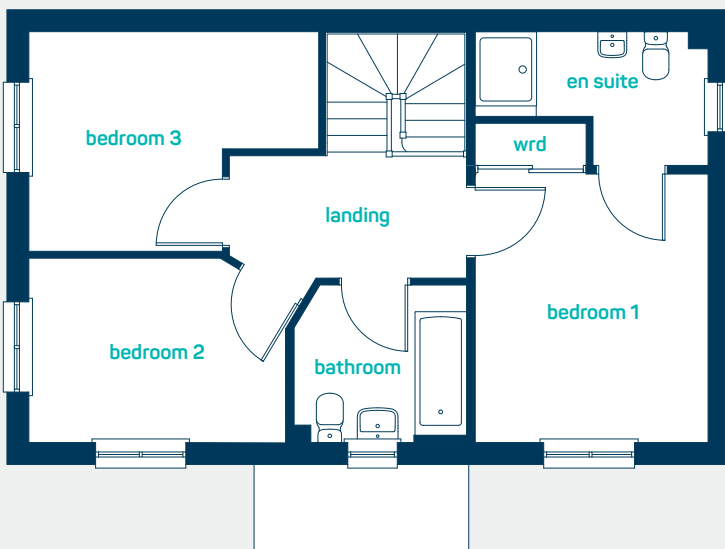
www.anwylhomes.co.uk





ground floor

kitchen/ dining	18'6" x 12'11"
living room cloak room	18'6" x 10'5" 5'5" x 7'3"
kitchen/ dining	8.45m x 3.73m
living room cloak room	5.63m x 3.17m 2.2m x 1.65m



first floor

bedroom 1	12'1" x 10'6"
en-suite	10'6" x 6'0"
bedroom 2	11'7" x 8'4"
bedroom 3	13'1" x 9'11"
bathroom	7'10" x 7'1"
bedroom 1	3.69m x 3.20m
en-suite	3.20m x 1.83m
bedroom 2	3.53m x 2.53m
bedroom 3	3.98m x 3.01m
bathroom	2.38m x 2.15m

the longford
3 bed detached home

ANWYL
thoughtful homes

**NEW
HOMES
QUALITY
CODE**

**NEW HOMES
OMBUDSMAN
SERVICE**

www.anwylhomes.co.uk

Anwyl Homes is a Registered Developer with the NHQB. This is a computer-generated image of the longford, elevation treatment may vary. Room sizes are approximate, dimensions are taken from the longest room point (please consult homes advisor for measurement points). Plots may be handed and any garages may be single or double. Kitchen and bathroom layouts are indicative. These plans are correct at the time of going to press, but may be subject to change during construction. Please ensure that you check for specific plot details. 01/11/22.

everything considered.

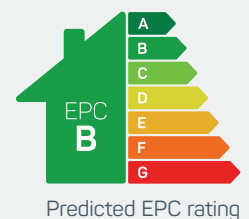


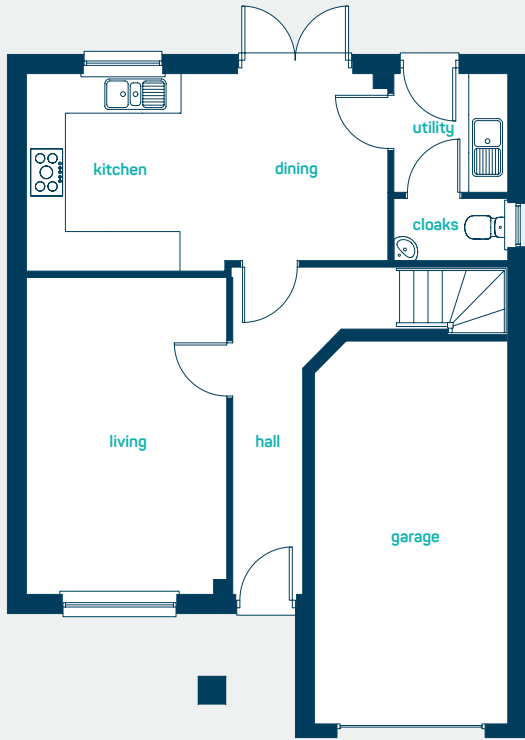
the lymm

4 bed detached with garage

A *spacious* 4-bedroom detached home. The Lymm is thoughtfully designed to make the most of the space available, providing a well-planned open plan living space and a separate lounge in which to relax. Boasting 4 generously sized bedrooms, integral garage, lovely high ceilings and a roofed porch the lymm is designed for today's family.

www.anwylhomes.co.uk

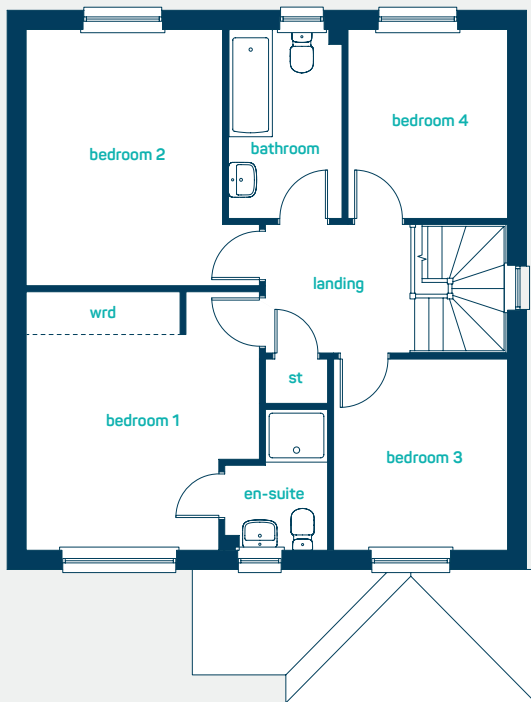




large open plan
kitchen diner

ground floor

kitchen/dining	18'11" x 10'1"
utility	6'1" x 5'11"
living room	16'3" x 10'5"
cloaks	5'11" x 3'2"
kitchen/dining	5.76m x 3.07m
utility	1.85m x 1.80m
living room	4.96m x 3.18m
cloaks	1.80m x 0.96m



first floor

bedroom 1	13'4" x 12'2"
en-suite	7'3" x 5'5"
bedroom 2	13'2" x 12'2"
bedroom 3	9'10" x 9'1"
bedroom 4	9'9" x 8'4"
bathroom	9'9" x 6'0"
bedroom 1	4.06m x 3.71m
en-suite	2.20m x 1.65m
bedroom 2	4.02m x 3.71m
bedroom 3	3.00m x 2.76m
bedroom 4	2.96m x 2.53m
bathroom	2.96m x 1.82m

the lymm
4 bed detached with garage

ANWYL
thoughtful homes

NEW HOMES QUALITY CODE

NEW HOMES OMBUDSMAN SERVICE

www.anwylhomes.co.uk

Anwyl Homes is a Registered Developer with the NHQB. This is a computer-generated image of the lymm, elevation treatment may vary. Room sizes are approximate, dimensions are taken from the longest room point (please consult homes advisor for measurement points). Plots may be handed and any garages may be single or double. Kitchen and bathroom layouts are indicative. These plans are correct at the time of going to press, but may be subject to change during construction. Please ensure that you check for specific plot details. 01/11/22 (grand version).

everything considered.

ANWYL
thoughtful homes

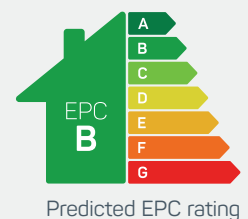


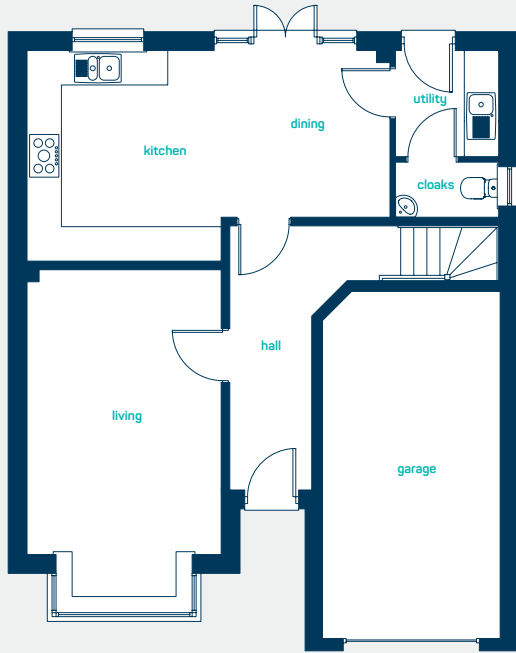
the ascot

4 bed detached with garage

A 4 bedroom *detached* home. Key features include a separate living room, 4 double bedrooms and master bedroom with en-suite.

www.anwylhomes.co.uk



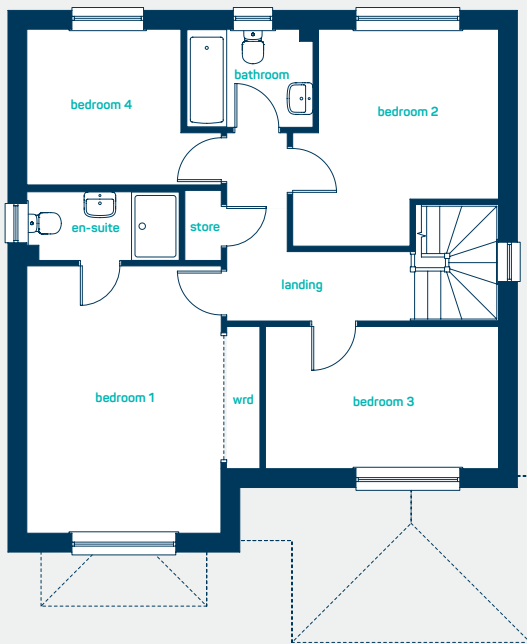


ideal for *spacious living*

ground floor

kitchen/dining 20'9" x 12'1"
 utility 6'1" x 5'11"
 living room(inc bay) 18'11" x 11'1"
 cloaks 5'11" x 3'2"

kitchen/dining 6.33m x 3.67m
 utility 1.85m x 1.80m
 living room(inc bay) 5.75m x 3.38m
 cloaks 1.80m x 0.96m



first floor

bedroom 1 15'4" x 13'4"
 en-suite 8'9" x 3'11"
 bedroom 2 12'5" x 11'9"
 bedroom 3 13'4" x 8'2"
 bedroom 4 11'1" x 8'11"
 bathroom 7'3" x 5'7"

bedroom 1 4.66m x 4.06m
 en-suite 2.66m x 1.20m
 bedroom 2 3.78m x 3.59m
 bedroom 3 4.06m x 2.48m
 bedroom 4 3.39m x 2.71m
 bathroom 2.21m x 1.71m

the ascot
 4 bed detached with garage

ANWYL
 thoughtful homes

NEW HOMES QUALITY CODE

NEW HOMES SERVICE OMBUDSMAN

www.anwylhomes.co.uk

Anwyl Homes is a Registered Developer with the NHQB. This is a computer-generated image of the ascot, elevation treatment may vary. Room sizes are approximate, dimensions are taken from the longest room point (please consult homes advisor for measurement points). Plots may be handed and any garages may be single or double. Kitchen and bathroom layouts are indicative. These plans are correct at the time of going to press, but may be subject to change during construction. Please ensure that you check for specific plot details. 01/11/22 (grand version).

everything considered.

ANWYL
thoughtful homes

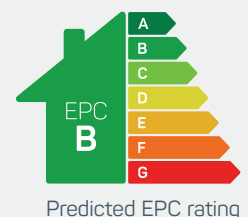


the henley

4 bed detached with garage

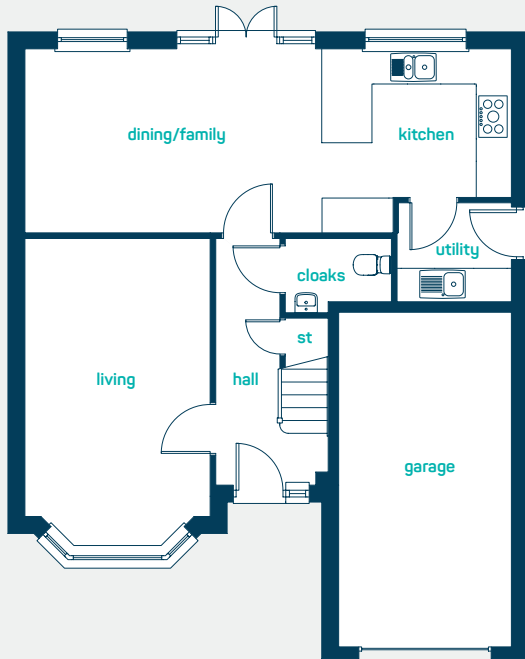
A *traditional* 4 bedroom detached home. Designed to capture the essence of traditional house building with lovely high ceilings, beautiful bay windows and a roofed porch. Step inside and the henley is thoughtfully designed for modern family life with open plan family space, separate living room and generously sized bedrooms on offer.

www.anwylhomes.co.uk



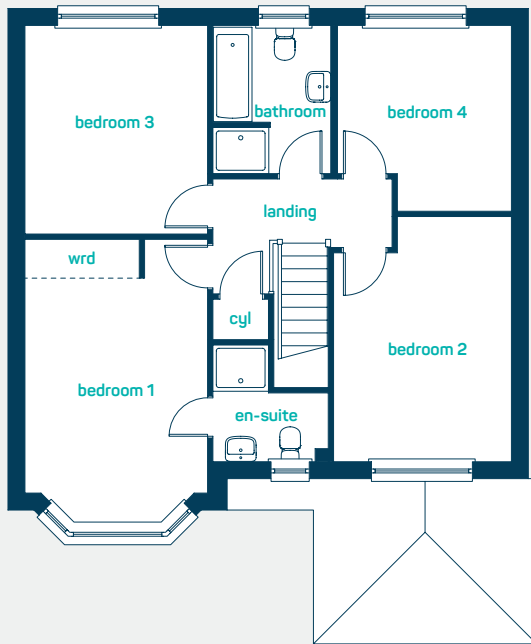


Large open plan
family space



ground floor

kitchen/dining/ family	28'6" x 10'8"
utility	6'1" x 5'10"
living room	18'0" x 10'9"
cloaks	6'8" x 4'3"
kitchen/dining/ family	8.67m x 3.25m
utility	1.85m x 1.76m
living room	5.48m x 3.27m
cloaks	2.03m x 1.31m



first floor

bedroom 1	16'9" x 10'8"
en-suite	6'9" x 6'9"
bedroom 2	14'4" x 10'5"
bedroom 3	12'2" x 10'8"
bedroom 4	10'10" x 10'2"
bathroom	8'6" x 6'11"
bedroom 1	5.09m x 3.25m
en-suite	2.07m x 2.07m
bedroom 2	4.37m x 3.16m
bedroom 3	3.72m x 3.25m
bedroom 4	3.31m x 3.09m
bathroom	2.60m x 2.11m

the henley
4 bed detached with garage

ANWYL
thoughtful homes

**NEW
HOMES
QUALITY
CODE**

**NEW HOMES
OMBUDSMAN
SERVICE**

www.anwylhomes.co.uk

Anwyl Homes is a Registered Developer with the NHQB. This is a computer-generated image of the henley, elevation treatment may vary. Room sizes are approximate, dimensions are taken from the longest room point (please consult homes advisor for measurement points). Plots may be handed and any garages may be single or double. Kitchen and bathroom layouts are indicative. These plans are correct at the time of going to press, but may be subject to change during construction. Please ensure that you check for specific plot details. 01/11/22 (grand version).

everything considered.

ANWYL
thoughtful homes

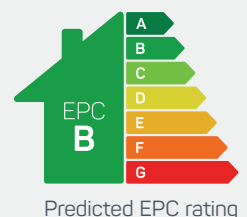


the cheltenham at mill green

4 bed detached

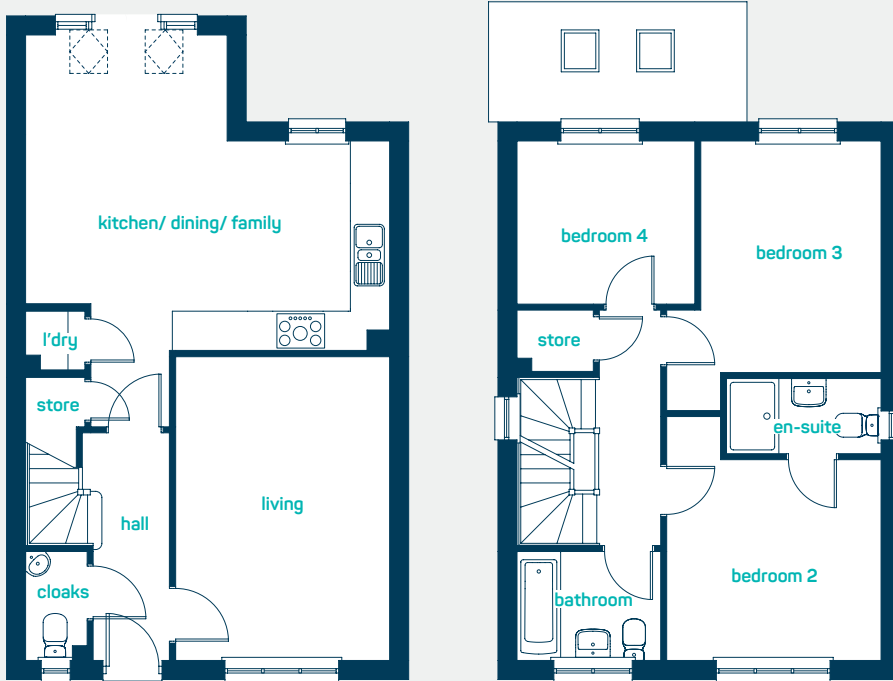
Spacious and thoughtfully designed accommodation over 3 floors. Ideal for growing families. Key features include an impressive master suite and shower room on the top floor offering the perfect place to unwind. A further en-suite shower room and family bathroom ensure that even busy times are a pleasure.

www.anwylhomes.co.uk





ideal for
growing families

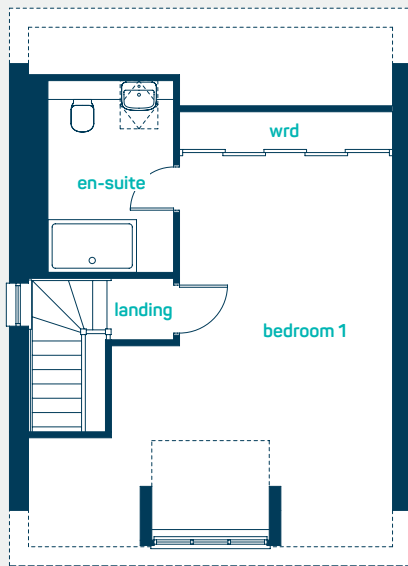


ground floor

kitchen/dining /family	18'10" x 16'4"
living room	15'9" x 11'0"
laundry cupboard	3'1" x 3'0"
cloaks	5'7" x 3'2"
kitchen/dining /family	5.75m x 4.97m
living room	4.79m x 3.36m
laundry cupboard	0.94m x 0.92m
cloaks	1.71m x 0.96m

first floor

bedroom 2	11'1" x 10'5"
en-suite 2	8'0" x 3'11"
bedroom 3	12'0 x 11'1"
bedroom 4	9'3" x 8'5"
bathroom	7'5" x 5'7"
bedroom 2	3.39m x 3.17m
en-suite 2	2.44m x 1.20m
bedroom 3	3.66m x 3.39m
bedroom 4	2.81m x 2.57m
bathroom	2.26m x 1.71m



second floor

bedroom 1	21'11" x 14'7"
en-suite 1	10'0" x 6'7"
bedroom 1	6.68m x 4.45m
en-suite 1	3.05m x 2.00m

the cheltenham
at mill green
4 bed detached

www.anwyllhomes.co.uk

ANWYL
thoughtful homes

NEW HOMES QUALITY CODE

NEW HOMES OMBUDSMAN SERVICE

Anwyl Homes is a Registered Developer with the NHQB. This is a computer-generated image of the cheltenham at mill green, elevation treatment may vary. Room sizes are approximate, dimensions are taken from the longest room point (please consult homes advisor for measurement points). Plots may be handed and any garages may be single or double. Kitchen and bathroom layouts are indicative. These plans are correct at the time of going to press, but may be subject to change during construction. Please ensure that you check for specific plot details. 01/11/22.

everything considered.

ANWYL
thoughtful homes

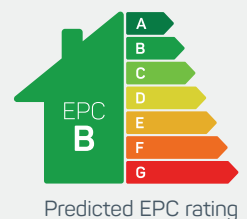


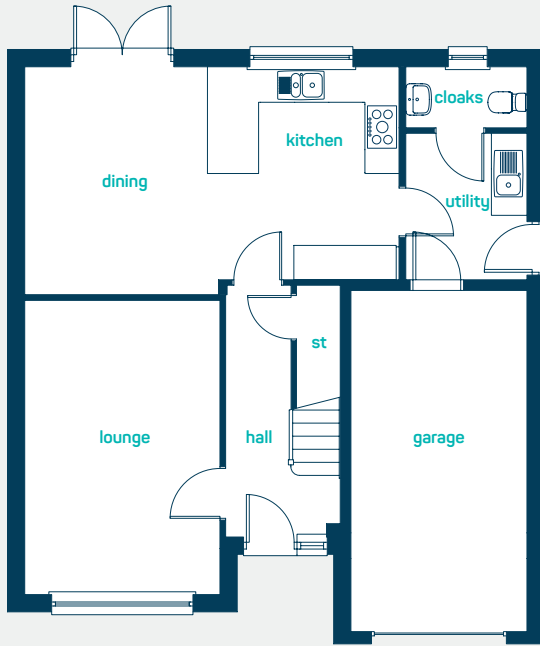
the hartford

4 bed detached with garage

A *spacious* modern 4 bedroom detached home. Key features include feature high ceilings, separate living room, integral garage and an *open plan* kitchen diner.

www.anwylhomes.co.uk



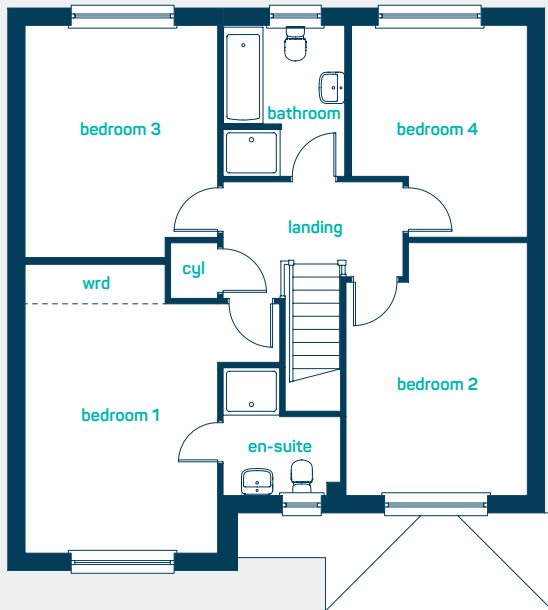


ideal for
growing families

ground floor

kitchen/dining 21'6" x 13'0"
utility 8'6" x 6'11"
living room 16'10" x 11'1"
cloaks 6'11" x 3'5"

kitchen/dining 6.56m x 3.96m
utility 2.58m x 2.11m
living room 5.13m x 3.38m
cloaks 2.11m x 1.05m



first floor

bedroom 1 16'7" x 11'0"
en-suite 7'4" x 6'9"
bedroom 2 14'6" x 10'5"
bedroom 3 13'4" x 11'0"
bedroom 4 12'2" x 10'1"
bathroom 8'8" x 7'0"

bedroom 1 5.06m x 3.36m
en-suite 2.22m x 2.07m
bedroom 2 4.42m x 3.16m
bedroom 3 4.06m x 3.36m
bedroom 4 3.70m x 3.07m
bathroom 2.63m x 2.14m

the hartford
4 bed detached with garage

ANWYL
thoughtful homes

**NEW
HOMES
QUALITY
CODE**

**NEW HOMES
OMBUDSMAN
SERVICE**

www.anwylhomes.co.uk

Anwyl Homes is a Registered Developer with the NHQB. This is a computer-generated image of the hartford, elevation treatment may vary. Room sizes are approximate, dimensions are taken from the longest room point (please consult homes advisor for measurement points). Plots may be handed and any garages may be single or double. Kitchen and bathroom layouts are indicative. These plans are correct at the time of going to press, but may be subject to change during construction. Please ensure that you check for specific plot details. 01/11/22.

everything considered.

ANWYL
thoughtful homes

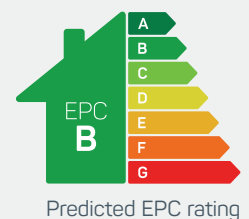


the caernarfon at mill green

4 bed detached with double garage

A *spacious* family home. Key features include high ceilings, an open plan kitchen dining and family room with French doors, a double garage, separate living room, media room and a large utility.

www.anwylhomes.co.uk





ideal for
modern family living



ground floor

kitchen/ dining/family	27'9" x 12'3"
utility	6'11" x 6'7"
living room	16'4" x 10'8"
media room	10'9" x 10'7"
cloaks	6'7" x 4'1"

kitchen/ dining/family	8.45m x 3.73m
utility	2.1m x 2m
living room	4.98m x 3.26m
media room	3.27m x 3.23m
cloaks	2m x 1.25m

first floor

bedroom 1	15'9" x 10'9"
en suite	9'6" x 6'9"
bedroom 2	13' x 11'9"
bedroom 3	11'9" x 10'9"
bedroom 4	10'6" x 9'2"
bathroom	9'2" x 6'9"

bedroom 1	4.79m x 3.27m
en suite	2.89m x 2.06m
bedroom 2	3.95m x 3.57m
bedroom 3	3.57m x 3.28m
bedroom 4	3.2m x 2.8m
bathroom	2.8m x 2.07m

the caernarfon
at mill green
4 bed detached with double garage

www.anwylhomes.co.uk

ANWYL
thoughtful homes

**NEW
HOMES
QUALITY
CODE**

**NEW HOMES
OMBUSMAN
SERVICE**

Anwyl Homes is a Registered Developer with the NHQB. This is a computer-generated image of the caernarfon, elevation treatment may vary. Room sizes are approximate, dimensions are taken from the longest room point (please consult homes advisor for measurement points). Plots may be handed and any garages may be single or double. Kitchen and bathroom layouts are indicative. These plans are correct at the time of going to press, but may be subject to change during construction. Please ensure that you check for specific plot details. 01/11/22.

everything considered.

got questions?

call 01772 376 238



Email: millgreen@anwyl.co.uk
Lytham Road, Warton, Preston, PR4 1AU

www.anwylhomes.co.uk/millgreen

everything considered.