



THE WOLDS

AT BOX ROAD, CAM

Shared ownership in Gloucestershire

The Wolds, Cam

ASTER
GROUP

Contents



Introduction

Site plan

Area map

Available homes

Your customer journey starts here...

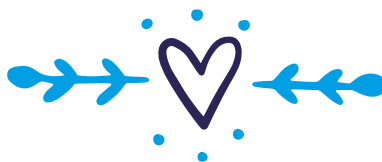
What's included with our new homes

Things to know

Contact information



Are you looking for a new home in the Gloucestershire village of Cam?



Our new homes at The Wolds, Box Road, Cam provide easy access to a wide range of amenities. Cam has everything you need – from a Post Office to a petrol station, pharmacy, supermarket and independent shops. While in Dursley you'll find a pet shop, bike shop, opticians and bakery.

Transport links are great, with the M5 a short drive away meaning you can be in Cheltenham, Gloucester or Bristol in under 40 minutes. There's also Cam and Dursley train station just five minutes' walk from the development, with trains to Bath, Bristol, Gloucester, Cheltenham and Worcester. If you're dreaming of jetting off, Bristol airport is also relatively close by.

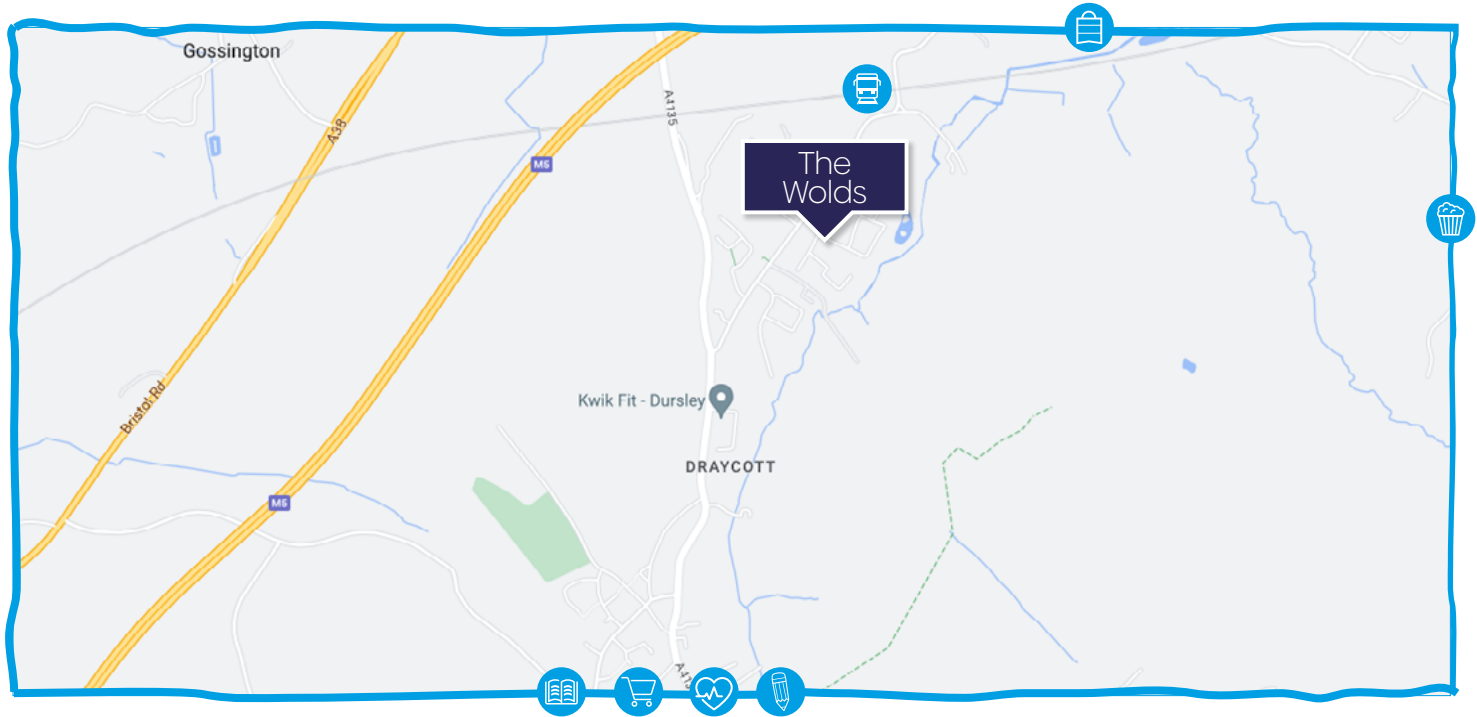


Site Plan

● Shared Ownership Homes



Distances and locations are approximate.



Cam & Dursley train station
0.3 miles



Tesco
1.5 miles



Cam Woodfield Infant School
2.3 miles



Rednock School
2.5 miles



Walnut Tree Practice
2.9 miles



Vue cinema
7.9 miles



Gloucester Quays
12.6 miles

Ground Floor

Total: 94.76 sq m

Kitchen: 3.63m x 2.38m

Living/Dining: 5.05m x 4.69m

WC: 1.78m x 1.00m

First Floor

Total: 94.76 sq m

Bedroom 1: 3.86m x 5.04m

Bedroom 2: 3.70m x 2.51m

Bedroom 3: 2.54m x 2.11m

Bathroom: 2.15m x 2.04m



3-bedroom home.

All floor plans are representative only and may be subject to change.

All measurements are approximate. Some plots may be handed.

All measurement are in metres.

St = Storage.

Ground Floor

Total: 94.76 sq m

Kitchen: 3.63m x 2.38m

Living/Dining: 5.05m x 4.69m

WC: 1.78m x 1.00m

First Floor

Total: 94.76 sq m

Bedroom 1: 3.86m x 5.04m

Bedroom 2: 3.70m x 2.51m

Bedroom 3: 2.54m x 2.11m

Bathroom: 2.15m x 2.04m



3-bedroom home.

All floor plans are representative only and may be subject to change.

All measurements are approximate. Some plots may be handed.

All measurement are in metres.

St = Storage.

Ground Floor

Total: 94.76 sq m

Kitchen/Dining: 6.00m x 2.79m

Living Room: 3.74m x 5.03m

WC: 1.83m x 1.00m

First Floor

Total: 94.76 sq m

Bedroom 1: 3.70m x 2.84m

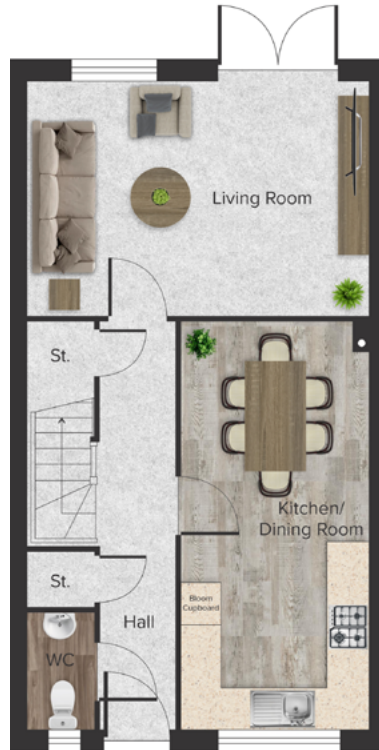
Bedroom 2: 3.46m x 2.84m

Bedroom 3: 2.63m x 2.14m

Bedroom 4: 2.57m x 2.14m

Bathroom: 2.21m x 2.84m

Plot 3, 22, 24 & 29



4-bedroom home.

All floor plans are representative only and may be subject to change.

All measurements are approximate. Some plots may be handed.

All measurement are in metres.

St = Storage.

Ground Floor

Total: 69.78 sq m

Kitchen: 3.40m x 1.96m

Living/Dining: 5.06m x 4.16m

WC: 1.70m x 1.01m

First Floor

Total: 69.78 sq m

Bedroom 1: 3.56m x 4.16m

Bedroom 2: 2.75m x 4.16m

Bathroom: 2.06m x 2.06m



Plot 6, 11, 12 & 31



2-bedroom home.

All floor plans are representative only and may be subject to change.

All measurements are approximate. Some plots may be handed.

All measurement are in metres.

St = Storage.

Ground Floor

Total: 69.78 sq m

Kitchen: 3.40m x 1.96m

Living/Dining: 5.06m x 4.16m

WC: 1.70m x 1.01m

First Floor

Total: 69.78 sq m

Bedroom 1: 3.56m x 4.16m

Bedroom 2: 2.75m x 4.16m

Bathroom: 2.06m x 2.06m



Plot 7, 8, 13 & 32



2-bedroom home.

All floor plans are representative only and may be subject to change.

All measurements are approximate. Some plots may be handed.

All measurement are in metres.

St = Storage.

Ground Floor

Total: 84.09 sq m

Kitchen: 3.63m x 2.49m

Living/Dining: 4.83m x 5.00m

WC: 1.78m x 1.00m

First Floor

Total: 84.09 sq m

Bedroom 1: 3.80m x 5.35m

Bedroom 2: 3.49m x 2.83m

Bedroom 3: 2.42m x 2.13m

Bathroom: 2.02m x 2.06m



3-bedroom home.

All floor plans are representative only and may be subject to change.

All measurements are approximate. Some plots may be handed.

All measurement are in metres.

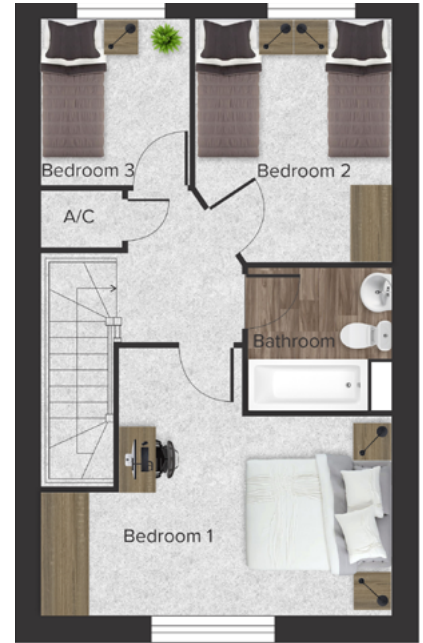
St = Storage.

Ground Floor

Total:	84.09 sq m
Kitchen:	3.63m x 2.49m
Living/Dining:	4.83m x 5.00m
WC:	1.78m x 1.00m

First Floor

Total:	84.09 sq m
Bedroom 1:	3.80m x 5.35m
Bedroom 2:	3.49m x 2.83m
Bedroom 3:	2.42m x 2.13m
Bathroom:	2.02m x 2.06m



3-bedroom home.

All floor plans are representative only and may be subject to change.

All measurements are approximate. Some plots may be handed.

All measurement are in metres.

St = Storage.

Ground Floor

Total: 99.48 sq m

Kitchen/Dining: 5.47m x 3.43m

Living Room: 5.47m x 3.40m

WC: 1.71m x 1.12m

First Floor

Total: 99.48 sq m

Bedroom 1: 3.88m x 3.40m

Bedroom 2: 2.73m x 4.13m

Bedroom 3: 2.67m x 3.41m

Bathroom: 1.96m x 2.14m

En-Suite: 1.53m x 2.78m

Plot 14, 20, 25, 30



All floor plans are representative only and may be subject to change.

All measurements are approximate. Some plots may be handed.

All measurement are in metres.

St = Storage.

3-bedroom home.

Ground Floor

Total: 69.78 sq m

Kitchen: 3.40m x 1.96m

Living/Dining: 5.06m x 4.16m

WC: 1.70m x 1.01m



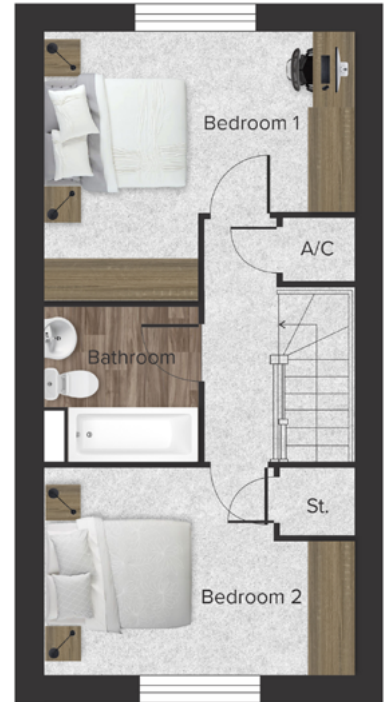
First Floor

Total: 69.78 sq m

Bedroom 1: 3.56m x 4.16m

Bedroom 2: 2.75m x 4.16m

Bathroom: 2.06m x 2.06m



2-bedroom home.

All floor plans are representative only and may be subject to change.

All measurements are approximate. Some plots may be handed.

All measurement are in metres.

St = Storage.

Ground Floor

Total: 69.78 sq m

Kitchen: 3.40m x 1.96m

Living/Dining: 5.06m x 4.16m

WC: 1.70m x 1.01m



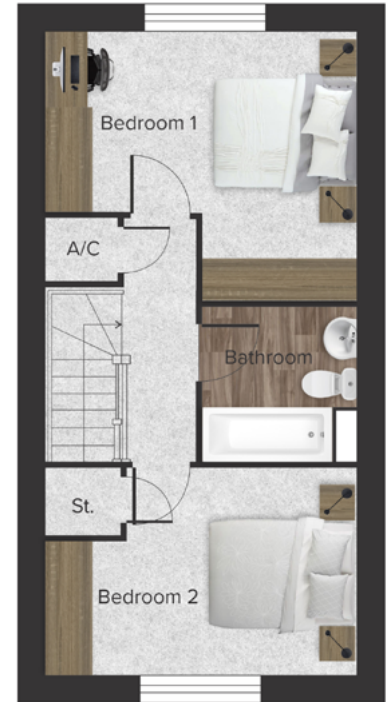
First Floor

Total: 69.78 sq m

Bedroom 1: 3.56m x 4.16m

Bedroom 2: 2.75m x 4.16m

Bathroom: 2.06m x 2.06m



2-bedroom home.

All floor plans are representative only and may be subject to change.

All measurements are approximate. Some plots may be handed.

All measurement are in metres.

St = Storage.

Ground Floor

Total: 94.76 sq m

Kitchen/Dining: 6.00m x 2.79m

Living Room: 3.74m x 5.03m

WC: 1.83m x 1.00m

First Floor

Total: 94.76 sq m

Bedroom 1: 3.70m x 2.84m

Bedroom 2: 3.46m x 2.84m

Bedroom 3: 2.63m x 2.14m

Bedroom 4: 2.57m x 2.14m

Bathroom: 2.21m x 2.84m



4-bedroom home.

All floor plans are representative only and may be subject to change.

All measurements are approximate. Some plots may be handed.

All measurement are in metres.

St = Storage.

Ground Floor

Total: 98.72 sq m

Kitchen/Dining: 3.73m x 5.34m

Living Room: 3.13m x 5.61m

WC: 2.27m x 1.00m

First Floor

Total: 98.72 sq m

Bedroom 1: 4.10m x 4.24m

Bedroom 2: 4.15m x 4.24m

Bedroom 3: 3.72m x 2.63m

Bathroom: 2.02m x 1.97m

En-Suite: 2.25m x 1.55m

Plot 27, 33 & 35



3-bedroom home.

All floor plans are representative only and may be subject to change.

All measurements are approximate. Some plots may be handed.

All measurement are in metres.

St = Storage.

Ground Floor

Total: 98.72 sq m

Kitchen/Dining: 3.73m x 5.34m

Living Room: 3.13m x 5.61m

WC: 2.27m x 1.00m



First Floor

Total: 98.72 sq m

Bedroom 1: 4.10m x 4.24m

Bedroom 2: 4.15m x 4.24m

Bedroom 3: 3.72m x 2.63m

Bathroom: 2.02m x 1.97m

En-Suite: 2.25m x 1.55m



3-bedroom home.

All floor plans are representative only and may be subject to change.

All measurements are approximate. Some plots may be handed.

All measurement are in metres.

St = Storage.

Shared Ownership in
Cam
The Wolds



Get yourself on the property ladder with ease thanks to shared ownership

You customer journey starts here...

01.

What happens when you buy a shared ownership home?



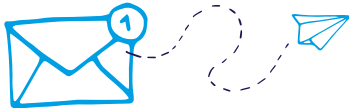
02.

Start by registering your details with Aster.



03.

You'll receive property alerts via email from Aster that match your requirements.



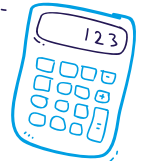
04.



Once you've found your perfect home, get in touch with our team to find out more.

05.

You'll need an affordability assessment. We can point you in the right direction to do this via [TMP Mortgages](#).



06.

The affordability assessment will work out the maximum share you can afford to buy of your home.



07.



If you are allocated a property, [TMP Mortgages](#) will request the essential documents required to progress your application. More information on this can be found [here](#).

08.



You can now pay your £250 reservation fee!

11.

Sign the legal docs and exchange contracts.



10.

Your solicitor and the Aster Sales Progression team will work together to progress your purchase & prepare your legal documents and contracts.



09.



Apply for a mortgage and instruct a solicitor.

12.

Our team and your solicitors will work towards agreeing your completion date and then you'll be all set to move in.



13.



ASTER GROUP

What's included with our new homes:



- Fitted kitchen with integrated oven, hob, cooker hood and spaces for your own washing machine and fridge/freezer.
- White bathroom suite (sink, bath, WC) with shower over the bath.
- Vinyl flooring to kitchen area, bathroom and WC (where present).
- Turf to rear garden (where present).
- Openreach connection to the property.
- Wiring for an aerial/Sky dish.



**Home
Sweet
Home**



Things to know:



- Unfortunately, the local authority does not tell us the council tax banding. They will confirm this with you directly after you take ownership.
- Utilities will be connected and up and running. We'll let you know the suppliers either on completion day or shortly before. You'll need to let them know your meter readings shortly after you complete the purchase.
- The Openreach line will be connected at the house. Your chosen phone/broadband supplier will arrange the connection at the other end directly with Openreach.
- Your new home may not show up on postcode searches right away. Don't worry, it will usually appear soon after you move in. This process is handled between the developer, Royal Mail and the local authority.
- Bins will either be provided by the developer or local authority. You may need to order and pay for them. Your sales negotiator will be able to give you more information on this nearer the time you take ownership.
- The property will go through a three stage snagging process by our qualified team. As with all new properties there may be defects that arise through a defect period and you will be given details of how to report these once you move in.
- Spaces for white goods usually accommodate the standard sized fridge/freezer and washing machine and are a minimum width of approximately 600mm. However we would recommend buyers measure the spaces prior to ordering any new appliances.

Please note, this list is not exhaustive and will sometimes vary from site to site. If you have questions about a specific site or plot, please speak to your sales negotiator.

Happy Days.

ASTER
GROUP

Get in touch with Matt Hale, Sales Negotiator for Gloucestershire.

T: 01380 735 545 M: 07730 750 786  @Matt_Aster [Aster.co.uk/sales](https://www.aster.co.uk/sales)

E: matt.hale@aster.co.uk

 @Sales_Aster

 /SalesAster

 /SalesAster

 /SalesAster

 /SalesAster

 @AsterSales