



ONE CLAPHAM

SHARED OWNERSHIP EDITION - BATTERSEA





INTRODUCTION



THE DEVELOPMENT



LOCAL AREA



CONNECTIVITY



AMENITIES



SPECIFICATION



SITE LAYOUT



FLOOR PLANS



SHARED OWNERSHIP



ABOUT PEABODY



Computer generated artist impression



Welcome to One Clapham, a spectacular new collection of 1, 2 and 3-bedroom Shared Ownership apartments, just a 2-minute walk from Clapham Junction Station. These homes boast spacious layouts and exceptional design, giving you the very best of modern living. Moments away from vibrant shops, cafés, bars and restaurants, you'll also be within easy reach of many tranquil green spaces across Battersea and Wandsworth, including the iconic Battersea Park.





ALL IN ONE PLACE

One Clapham is perfect for anyone looking for a stylish Shared Ownership home in central London.

These apartments are built from attractive and distinctive brickwork, inspired by local landmarks and buildings. They offer spacious interiors that have been designed to carefully considered specifications, all containing quality modern conveniences.



When you have an apartment at One Clapham you benefit from a 24-hour concierge service, offering an added level of ease, security and everyday convenience. Residents can also make use of a Peloton Room - a fitness studio space – as well as space for activities such as yoga. All residents can also enjoy a welcoming communal square, or relax in a private amenity space or in Swale Gardens, with its native trees and sunken garden.

With a collection of 37 thoughtfully designed Shared Ownership apartments, One Clapham is your chance to get on the property ladder in one of central London's most desirable districts.

Images are computer generated artist impressions
1. Aerial view overlooking One Clapham
2. The Square
3. Monarch Square





ONE LONDON

Just south of the Thames in Battersea, One Clapham is surrounded by excellent amenities and neighbourhoods, ranging from the streets of fashionable Chelsea to the rolling green spaces of Clapham Common and Battersea Park. The iconic Battersea Power Station forms a distinctive part of the skyline, having been transformed into a contemporary hub of shops, restaurants, and lifestyle facilities. There's also lots going on near One Clapham, notably the annual Chelsea Flower Show which takes place at the Royal Hospital Chelsea. This truly is an exceptional area in which to make your home – but when you do want to explore other destinations in the City, you can get there from Clapham Junction station, which is just on your doorstep.



ONE FOR THE ROAD

One Clapham is surrounded by an enviable choice of top-notch pubs and bars. Places of note include Northcote Records, a buzzing live music and cocktail bar that makes outstanding pizzas, as well as Vagabond, which offers more than 100 wines from unique, self-pour machines.

For a gastropub experience, Latchmere showcases some of the best ingredients from across the UK. It also has a heated courtyard, a sun terrace and even a theatre that has its home on the first floor.



For something fun and different, be sure to check out Four Thieves in Battersea. With two floors of drinking, dining and dancing, it has a private karaoke room and an incredible arcade where you can take part in remote controlled car racing, experience virtual reality and play a great choice of other games. It's also worth visiting one of the newest pubs in your neighbourhood, Northcote Saviour. Open from brunch, it's known for its Andalusian style churros, great wine list, excellent choice of craft beers and expertly brewed coffee, making it an ideal place to unwind at any time of the day.

Images
1. The Latchmere
2. The Northcote



ONE COURSE, OR THREE?

For a leisurely coffee or an outdoor meal, there are two cafés that really stand out. The Table in Battersea Rise has an exceptional brunch menu, a range of inventive evening plates and an extensive cocktail menu. There's plenty of outdoor seating where you can enjoy your Eggs Benedict, waffles or pancakes while watching the world go by. Another exceptional spot is the Pear Tree Café on Clapham Common. Serving food and drink all day, it's popular with families, and locals, and it also hosts live music for some evenings.

When it comes to restaurants, be sure to visit Taverna Trastevere - if you manage to get a reservation. Hugely popular, it serves authentic Roman cuisine, from homemade pasta to wood-fired pizza. The fact that it has opened a sister restaurant in Milan tells you all you need to know.



If you love Indian food, Tamila on Northcote Road has gone viral for its small plates, sides and curries, not to mention its imaginative cocktail menu. Nearby Bueno Sera specialises in amazing pizza and pasta and has lovely outdoor seating. That said, some people claim that the Breadstall van in Clapham makes exceptionally, unforgettable pizzas. Other local Italian options that are worth trying include MadeInItaly and Botanica Hall. The latter has an unmissable 'bottomless brunch'.

Seafood aficionados will particularly appreciate The Fat Crab in Clapham. Using only the freshest ingredients, it's renowned for its lobster, oysters, many different types of crab, prawns, clams and crawfish. For something a little special, Azteca in Battersea is the place for upscale Mexican fusion dishes - many with a delicate Japanese influence. As the owners say, it's all about harmony and contrast on your plate.

Your new home is surrounded by a truly dazzling array of cafés and restaurants.

Images
1. The Bolingbroke
2. The Stonehouse



At One Clapham, you'll be just a 13-minute walk from Northcote Road, a vibrant stretch of over half a mile packed with independent shops, cafés and local favourites. Highlights include fresh-food specialists Bayley & Hall, the boutique gallery Clarendon Fine Art, sofa specialists Distinctive Chesterfields, and Hamish Johnston, widely regarded as one of the finest cheese retailers in London. For something sweet, stop by Aux Merveilleux, famed for its indulgent brioche and meringue-based treats.

Images

1. The Flower Stand
2. Hamish Johnston
3. Breadstall Pizza
4. Aux Merveilleux

UP ONE'S STREET

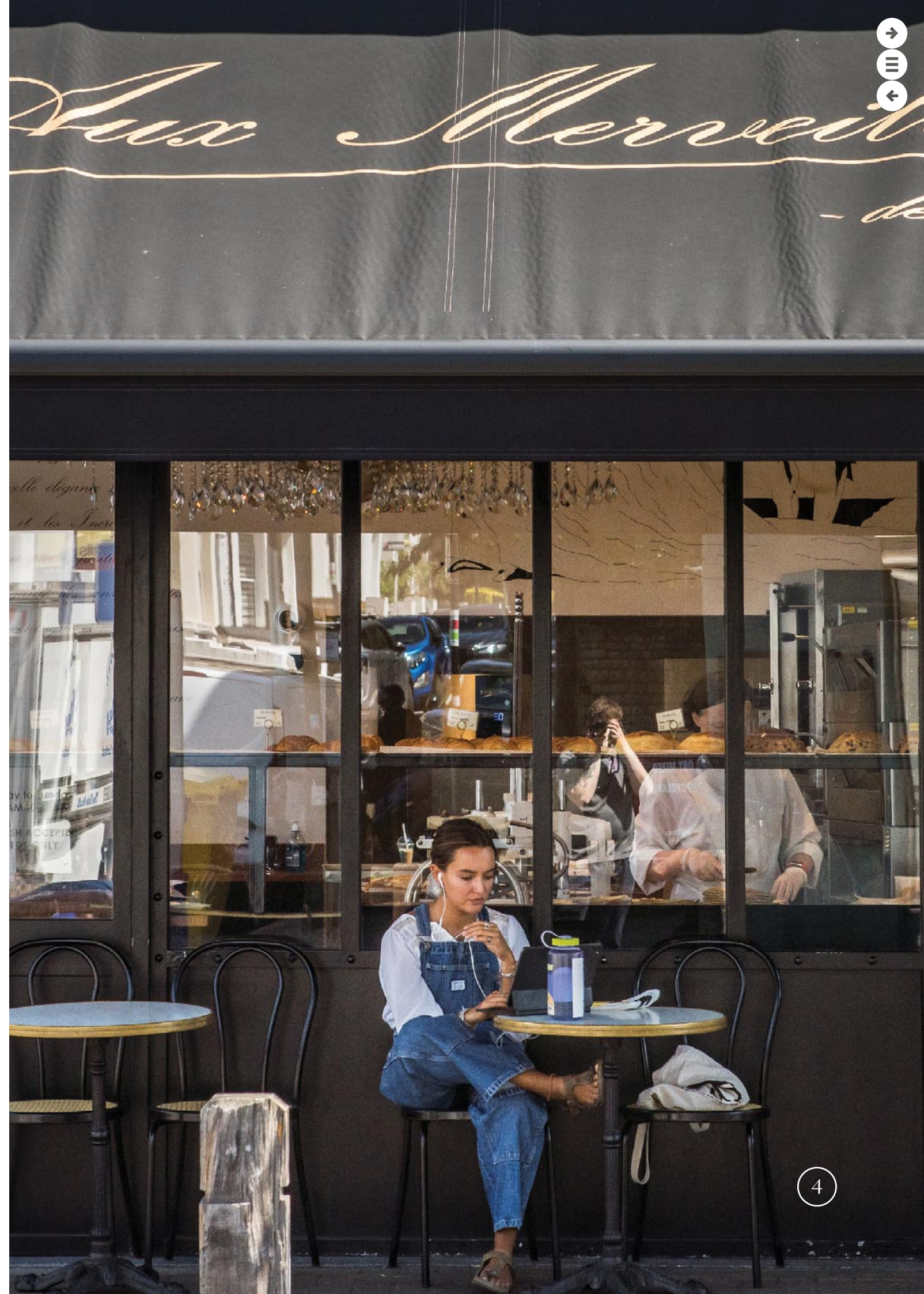
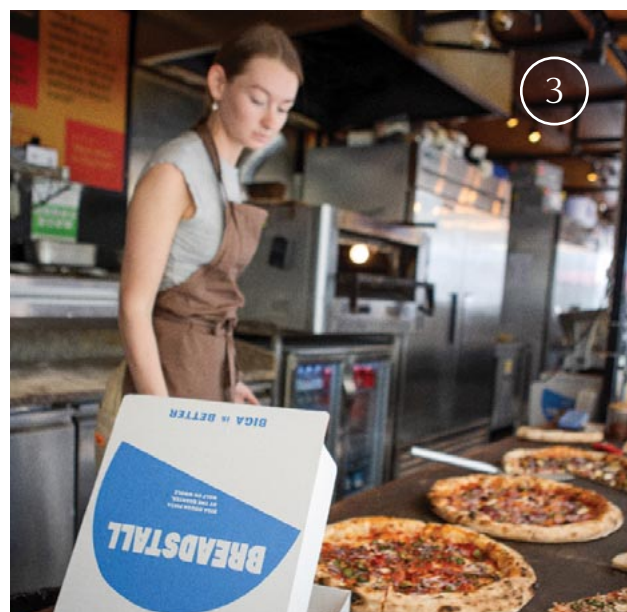
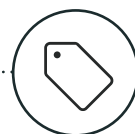
The road is home to Northcote Market, which was originally a food market dating back to the 1860s. Today, you'll find far more than fresh fruit and vegetables, with stalls selling everything from artisanal cured meats, baked goods and olives to fashion, jewellery, and arts and crafts. Regular favourites include The Flower Stand, perfect for picking up beautiful seasonal blooms, while food lovers can enjoy street food from a wide range of vendors, including the ever-popular Breadstall Pizza.

If you're looking for some interesting pieces to decorate your new home, be sure to explore Northcote Road Antiques Market. A narrow frontage takes you through to a magical area, where you'll find dealers specialising in everything from 19th century chandeliers through to art deco ornaments and country pine furniture.



Northcote Road

..... 13 minutes walk from
One Clapham





ONE ICONIC EXPERIENCE

The skyline of your new neighbourhood is dominated by the iconic Battersea Power Station. Building began in 1929 and, at its peak, Battersea supplied a fifth of London's electricity.

Today, the power station has been transformed into a fully modern community. You can explore high-end outlets such as BOSS, GANT, Hackett and Omega, look for cookware in Borough Kitchen and Le Creuset, or top up on culture at Clarendon Fine Art or Battersea Bookshop.

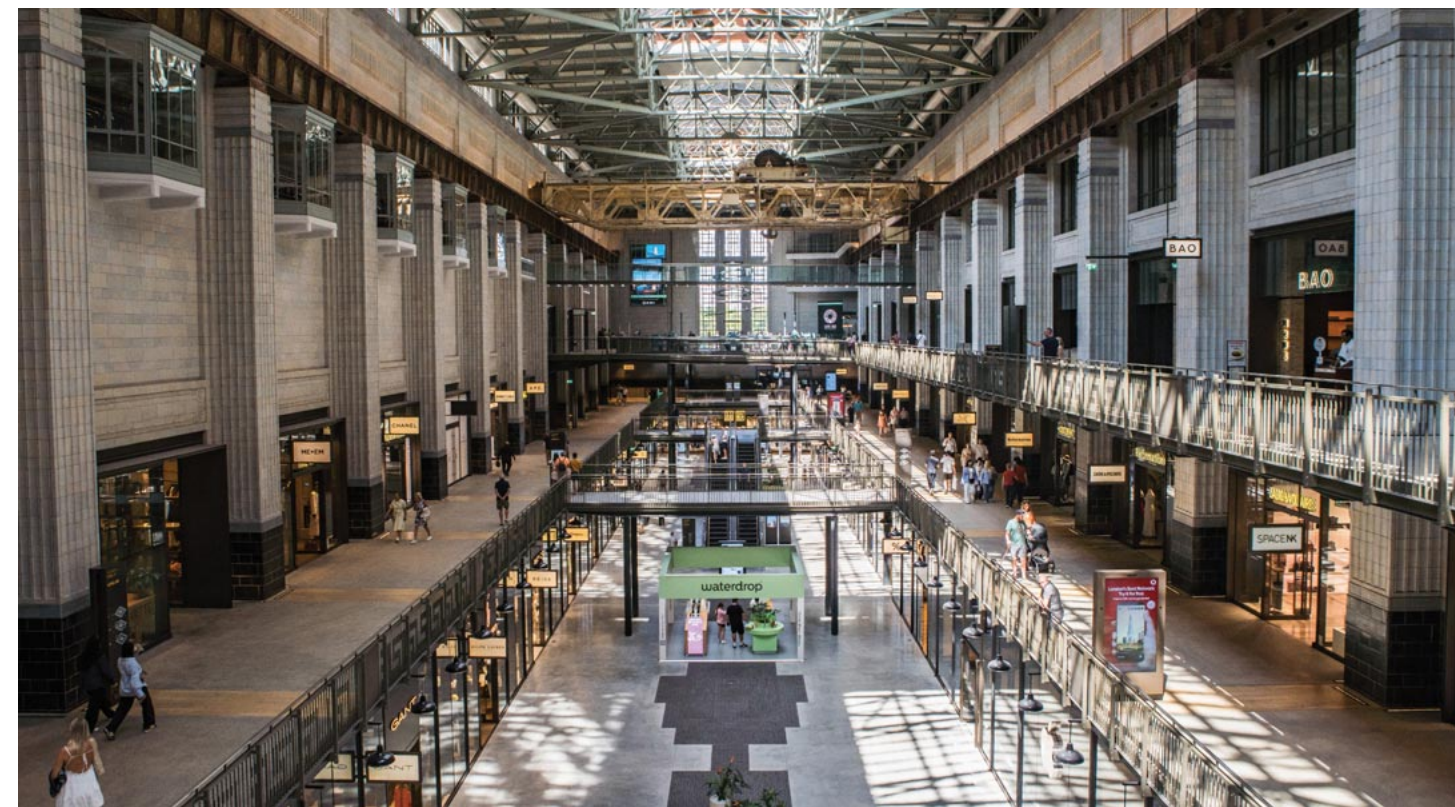


Battersea Power Station is also a great spot for food and drink. You can grab a specialist coffee from % Arabica, croissants and pastries at Blank Street, or a refreshing and cool drink at Joe & The Juice. If you're looking for a bigger meal, you can opt for fresh seafood at Wright Brothers, Japanese ramen at Tonkotsu, gourmet kebabs at Le Bab, or bottomless pizza at Gordon Ramsay's Street Pizza.

That's far from all there is to discover. Battersea is also home to facilities such as cinemas, health and spa centres, a virtual reality experience called DNA VR and even the ultimate in ping pong at Bounce. The more you visit this incredible place, the more you'll fall in love with it.



Battersea Power Station
17 minutes cycle from
One Clapham

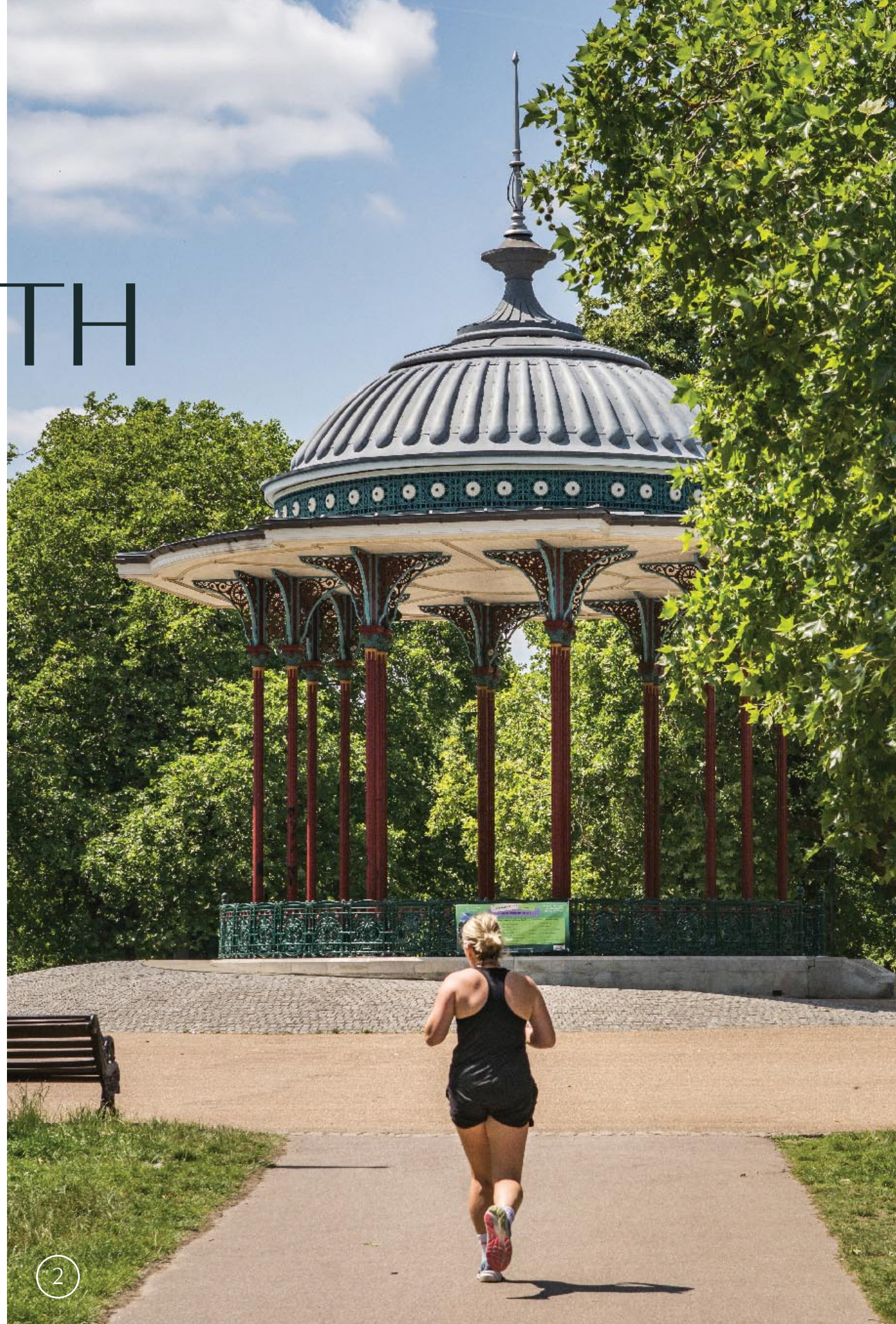




AT ONE WITH NATURE

At One Clapham, you're never far from nature. With 600 acres of parks, commons and green spaces in the surrounding area, you'll be able to enjoy walks along tree-lined avenues and picnics by wildflower garden. Wandsworth Common, Clapham Common and Battersea Park are all a short walk away, giving you easy access to jogging paths, playgrounds, ponds and outdoor sports facilities. Enjoy the riverside path at Battersea Park, the buzz of Clapham Common with its charming bandstand, or even the trim trail at Wandsworth Common. Sometimes it can be hard to remember you're so close to the hustle and bustle of central London.

Images;
1. Wandsworth Common
2. Clapham Common



Clapham Common
15 minutes walk



Wandsworth Common
15 minutes walk



Battersea Park
27 minutes walk



1



If you like to keep fit, there are lots of great facilities near One Clapham. Third Space is a luxury neighbourhood fitness club, offering high-spec workout and recovery spaces in a refurbished, Grade II listed building. The local branch of Fitness First is also popular, where you'll find excellent strength and cardio equipment, a steam room and sauna, plus a lively schedule of classes. Other nearby options include Anytime Fitness and F45 Training. You'll also be close to the Battersea Park Millennium Area, which is home to a sports centre and is where you can get involved in tennis, track sports and more.

You'll also find many other good sports venues near your new home, giving you opportunities to take part in everything from football and netball through to volleyball and boxing. You'll even find the London Quidditch Club practising at Clapham Common.



3

ONE YOU



2

If you like to be pampered from time to time, there are lots of spas in the local area. My Face Spa is the place to go for clinical facials, reflexology and deep tissue massage. Sawasdee Thai Spa is a little different, specialising in treatments such as Thai massage and herbal compresses. Bodyness is also another local favourite, allowing you to explore everything from hot stone massage to advanced Swedish massage, and even tailor-made massage sessions for couples.

Images

1. F45 Fitness

2. Wandsworth Common trim trail

3. Rocket Padel





ONE INCREDIBLE AREA

When you live at One Clapham, you're right in the heart of the action. As you can see from this map, your new home is in the midst of many excellent pubs, restaurants, cafés, gyms, parks, shops and much more. What will you explore first?



Pubs / Gastropubs

- 1 Northcote Records
- 2 Vagabond
- 3 Latchmere
- 4 The Four Thieves
- 5 Northcote Saviour
- 6 The Plough



Restaurants

- 7 Taverna Trastevere
- 8 Tamila
- 9 Bueno Sera
- 10 Madelntaly
- 11 The Stonehouse
- 12 The Bolingbroke



Cafes

- 13 Common
- 14 The Common Espresso Bar
- 15 Brickwood
- 16 Birdhouse
- 17 Story Coffee
- 18 The Table



Shopping

- 19 Clapham High Street
- 20 Abbeville Village
- 21 Northcote Road
- 22 Venn Street Market
- 23 ShopStop
- 24 Lavender Hill



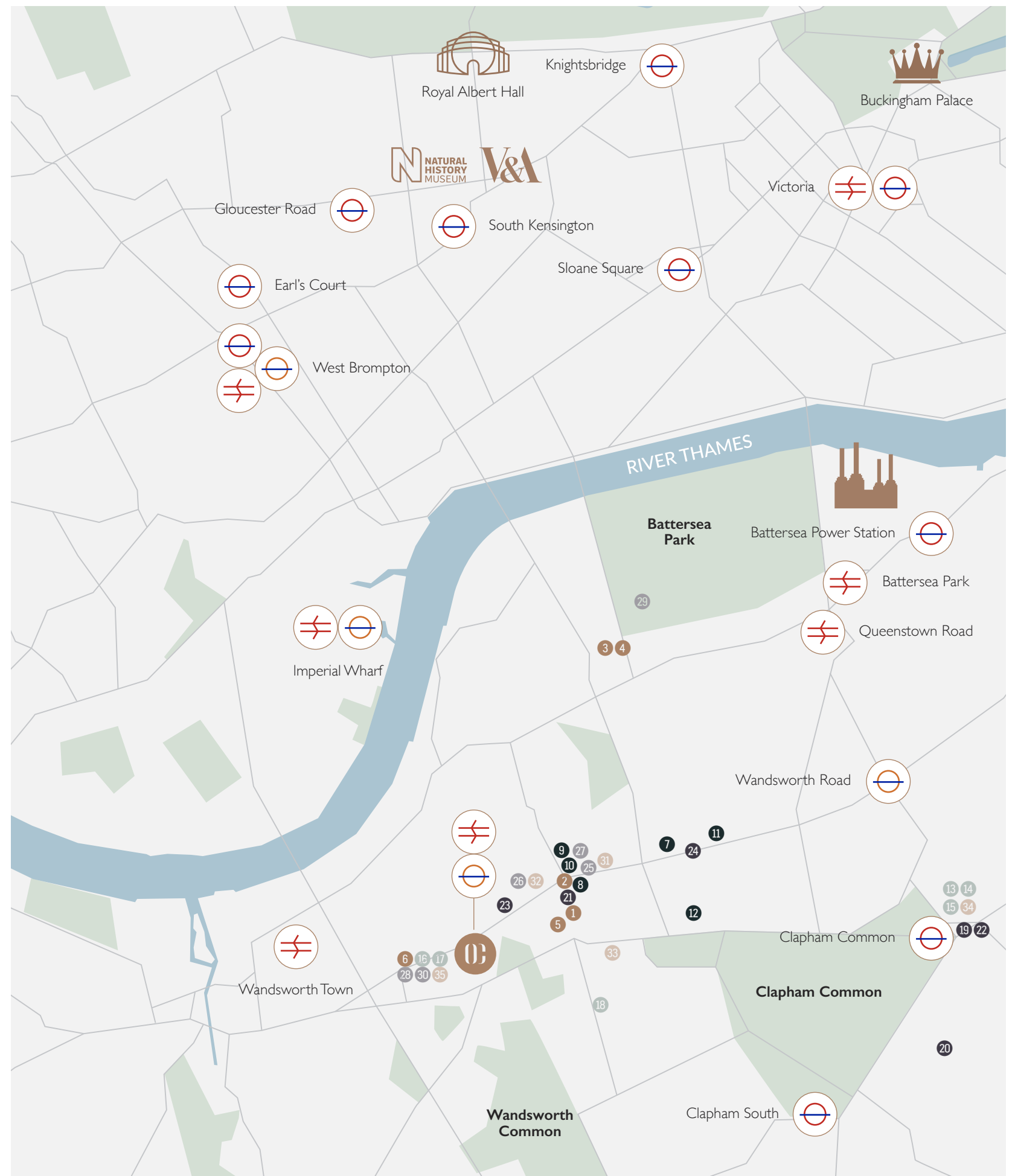
Leisure / Fitness

- 25 Third Space
- 26 Fitness First
- 27 Anytime Fitness
- 28 F45 Training
- 29 Battersea Park
- 30 Sadhana Yoga

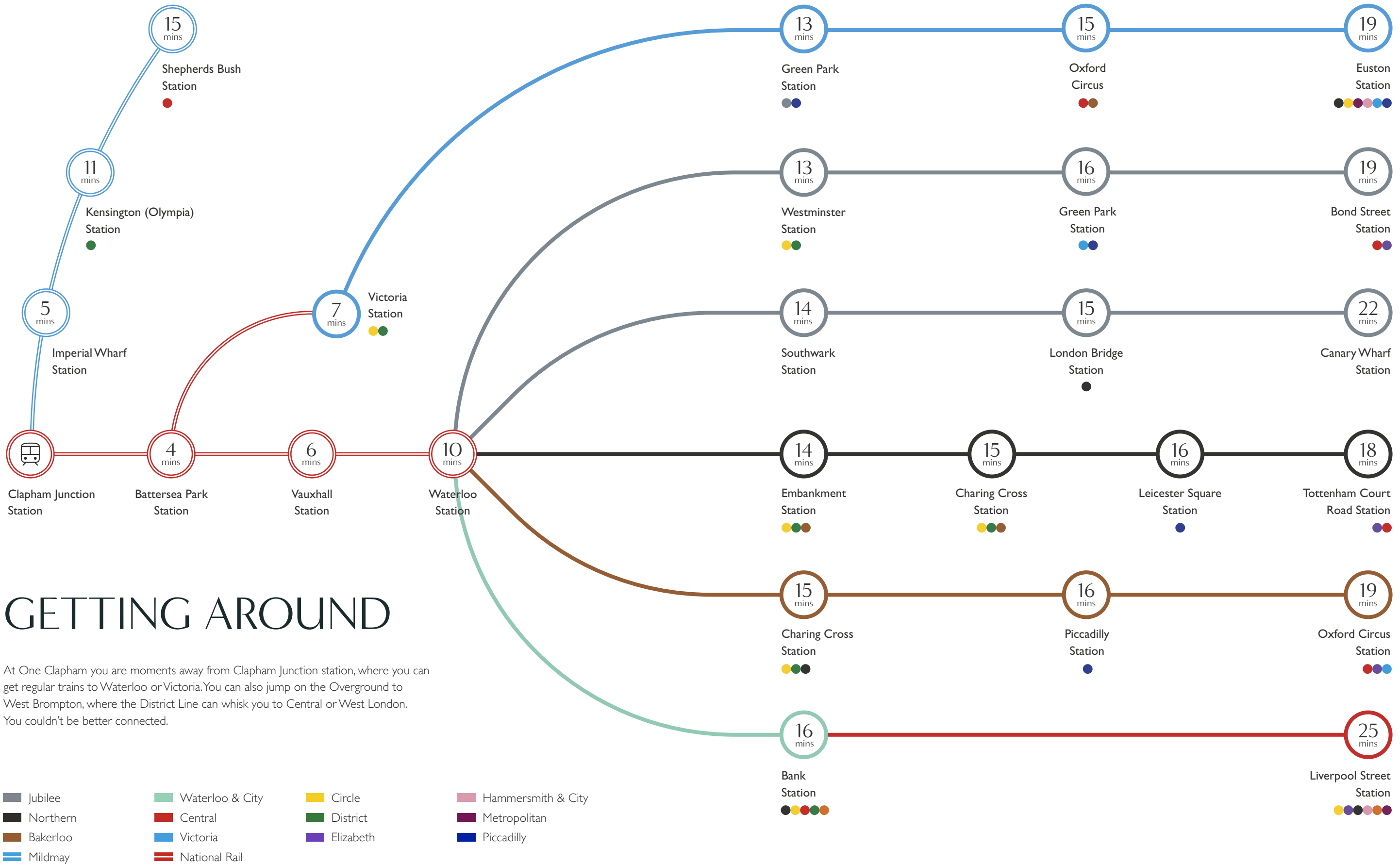


Food

- 31 Whole Foods
- 32 Sainsbury's Local
- 33 Tesco Express
- 34 Tude's Grocery
- 35 The Butchers Table



Map not to scale





Computer generated artist impression

ONE IMPRESSIVE WELCOME AWAITS

As a resident of One Clapham, you benefit from a friendly concierge service located within The Arrival, 24 hours per day. It provides a welcoming presence for your guests and helps manage deliveries with ease.



Computer generated artist impression

Plug in, tune out and zone in on your goals in the Peloton Hub located within The Arrival. With online classes at your fingertips, you can charge up or wind down, exercise by yourself or with your neighbours.

This light and airy studio space is great for yoga and workouts. One Clapham makes it simple to put wellbeing at the centre of your life.



Computer generated artist impression

ONE STEP ABOVE

Kitchen

- Matt smooth green handleless kitchen units
- LED lighting under wall units
- Laminate worktops with glass backplate
- Brushed steel mixer tap
- Bosch oven and hob in stainless steel
- Bosch integrated fridge/freezer
- Bosch Series washing machine
- Bosch integrated dishwasher
- Bosch microwave



General

Underfloor heating to all rooms

Wood-effect Pergo Visby silk matt laminate flooring to hallways, kitchen, living and dining areas

White matt emulsion finish to walls

Energy efficient downlights throughout except bedrooms

Landline telephone and BT fibre/Hyperoptic data points to living room and main bedroom*

Television point (terrestrial and satellite) points compatible with Sky Q+ to the living room and main bedroom*

**Subject to separate subscription*



Computer generated artist impression



Computer generated artist impression

Bedroom

Cormar luxelle carpet in grey

Built-in wardrobes with mirror-fronted sliding doors

En-suite & shower room (specific)

Walk-in shower with sliding glass shower screen

Chrome mixer tap with rain shower head and hand-held shower head

Matt beige porcelain tiles to floor and grey porcelain tiles to walls

White basin and W/C

Chrome mixer tap and push plate

Chrome heated towel rail

Shaver socket

Over basin cabinet mirror



Bathroom (apartment specific)

- Shower bath with glass shower screen
- Chrome bath/shower filler; shower head and rail
- Matt beige porcelain tiles to floor and grey porcelain tiles to walls
- White basin and W/C
- Chrome mixer tap and push plate
- Chrome heated towel rail
- Shaver socket

Security and Peace of mind

- Video entry system
- Sprinkler system fitted throughout apartments
- Wired smoke and heat detectors
- Multi-lock door with spy hole
- 12 year NHBC warranty
- 2 year defect period from practical completion

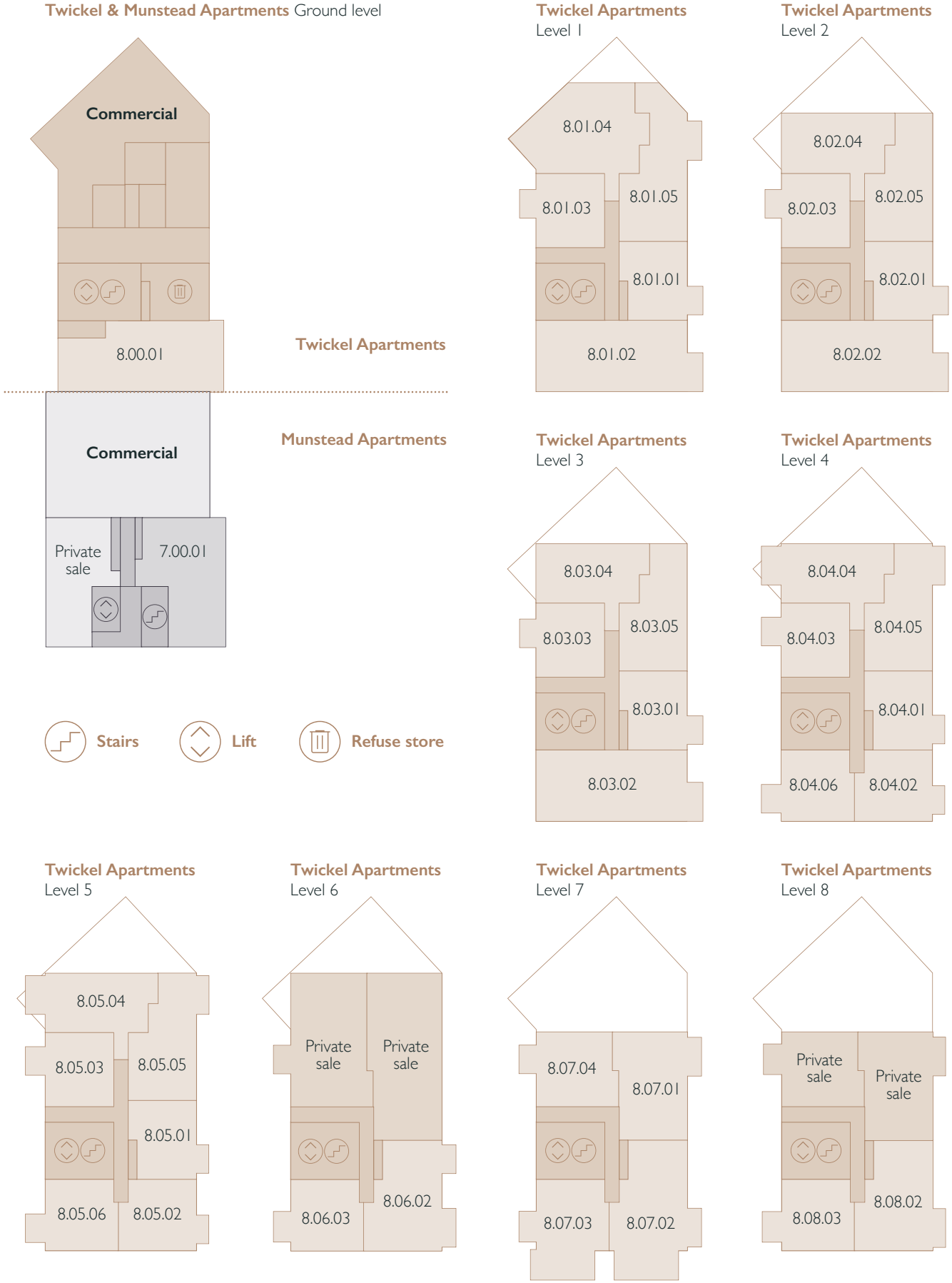


FIND THE ONE

Site layout

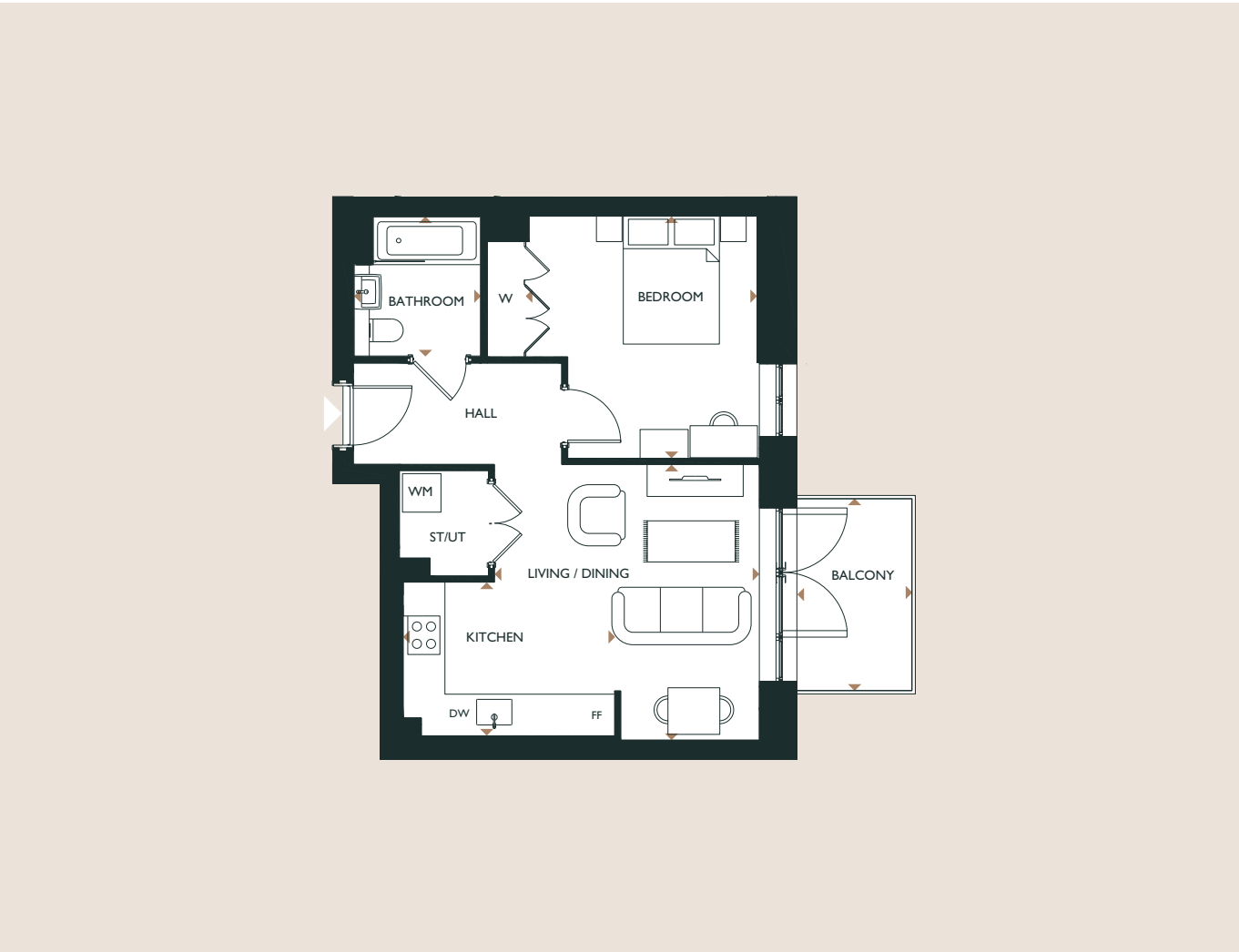


Floor layout

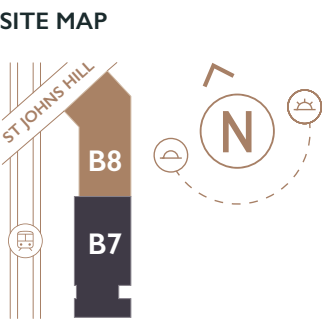
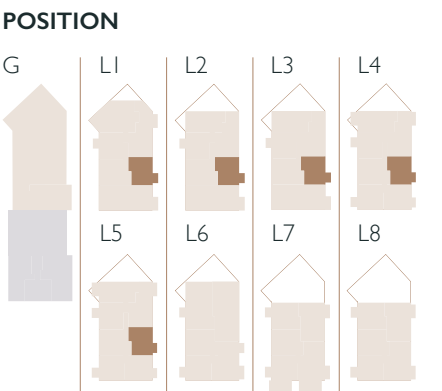


ONE BEDROOM

Twickel Apartments 8.01.01 / 8.02.01 / 8.03.01 / 8.04.01 / 8.05.01



DIMENSIONS		
Living/Dining	4.15m x 4.30m	13'07" x 14'01"
Kitchen	3.30m x 2.40m	10'10" x 7'10"
Bedroom	3.60m x 3.78m	11'09" x 12'05"
Bathroom	2.00m x 2.20m	6'07" x 7'03"
Internal Area	50.00 sqm	538.20 sq ft
Balcony	1.80m x 3.00m	5'11" x 9'10"
Balcony Area	5.38 sqm	57.90 sq ft



FF Fridge Freezer DW Dishwasher W Wardrobe ST Storage UT Utility WM Washing Machine

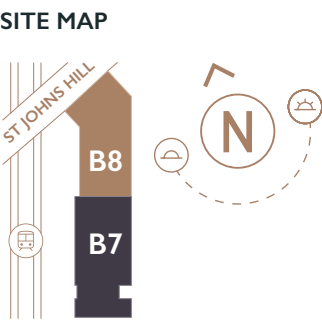
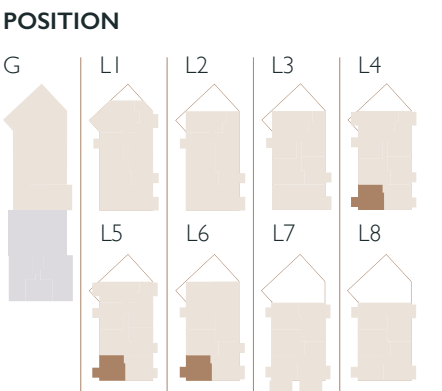
Apartment layouts provide approximate measurements only. Furniture within the marketing plans is indicative and for guidance purposes only. Dimensions, which are taken from the indicated points of measurement, are for guidance only and are not intended to be used for carpet sizes, appliance space or items of furniture. Measurements are rounded down and we work towards 10% tolerance. Apartment areas are provided as gross internal areas and may vary. Bathroom and kitchen layouts are indicative only and are subject to change. Wardrobe size and position may vary. Ceiling heights may vary within select apartments. All private outdoor space dimensions and areas are approximate and may vary. The information contained within this document does not constitute part of any offer, contract or warranty. Whilst the plans have been prepared with all due care for the convenience of the intending purchaser, the information contained herein is a preliminary guide only. Ceiling height may vary within select apartments.

ONE BEDROOM

Twickel Apartments 8.04.06 / 8.05.06 / 8.06.03



DIMENSIONS		
Living/Dining	4.80m x 3.77m	15'09" x 12'04"
Kitchen	2.40m x 2.50m	7'10" x 8'02"
Bedroom	3.73m x 3.49m	12'03" x 11'05"
Bathroom	2.20m x 2.00m	7'03" x 6'07"
Internal Area	52.12 sqm	561.01 sq ft
Balcony	1.80m x 3.00m	5'11" x 9'10"
Balcony Area	5.40 sqm	58.13 sq ft



FF Fridge Freezer DW Dishwasher W Wardrobe ST Storage UT Utility WM Washing Machine

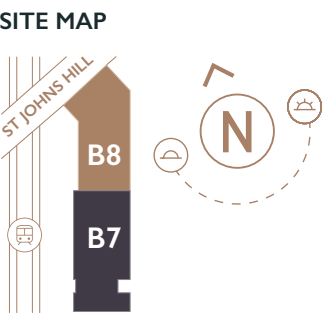
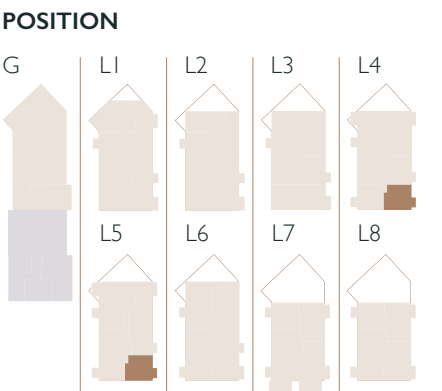
Apartment layouts provide approximate measurements only. Furniture within the marketing plans is indicative and for guidance purposes only. Dimensions, which are taken from the indicated points of measurement, are for guidance only and are not intended to be used for carpet sizes, appliance space or items of furniture. Measurements are rounded down and we work towards 10% tolerance. Apartment areas are provided as gross internal areas and may vary. Bathroom and kitchen layouts are indicative only and are subject to change. Wardrobe size and position may vary. Ceiling heights may vary within select apartments. All private outdoor space dimensions and areas are approximate and may vary. The information contained within this document does not constitute part of any offer, contract or warranty. Whilst the plans have been prepared with all due care for the convenience of the intending purchaser, the information contained herein is a preliminary guide only. Ceiling height may vary within select apartments.

ONE BEDROOM

Twickel Apartments 8.04.02 / 8.05.02



DIMENSIONS		
Living/Dining	4.24m x 3.39m	13'11" x 11'01"
Kitchen	3.40m x 2.49m	11'02" x 8'02"
Bedroom	3.50m x 3.60m	11'06" x 11'10"
Bathroom	2.00m x 2.20m	6'07" x 7'03"
Internal Area	51.78 sqm	557.36 sq ft
Balcony	1.80m x 3.00m	5'11" x 9'10"
Balcony Area	5.40 sqm	58.13 sq ft



FF Fridge Freezer DW Dishwasher W Wardrobe ST Storage UT Utility WM Washing Machine

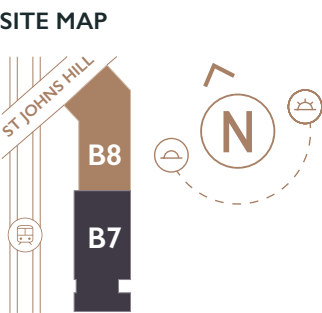
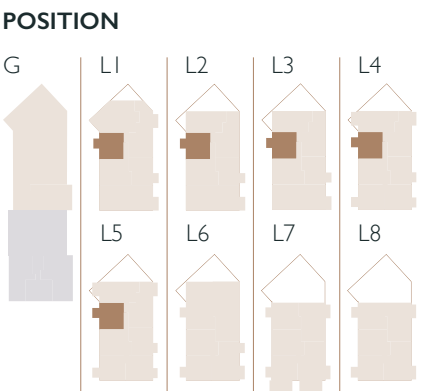
Apartment layouts provide approximate measurements only. Furniture within the marketing plans is indicative and for guidance purposes only. Dimensions, which are taken from the indicated points of measurement, are for guidance only and are not intended to be used for carpet sizes, appliance space or items of furniture. Measurements are rounded down and we work towards 10% tolerance. Apartment areas are provided as gross internal areas and may vary. Bathroom and kitchen layouts are indicative only and are subject to change. Wardrobe size and position may vary. Ceiling heights may vary within select apartments. All private outdoor space dimensions and areas are approximate and may vary. The information contained within this document does not constitute part of any offer, contract or warranty. Whilst the plans have been prepared with all due care for the convenience of the intending purchaser, the information contained herein is a preliminary guide only. Ceiling height may vary within select apartments.

ONE BEDROOM

Twickel Apartments 8.01.03 / 8.02.03 / 8.03.03 / 8.04.03 / 8.05.03



DIMENSIONS		
Living/Dining	4.91m x 4.28m	16'01" x 14'01"
Kitchen	3.14m x 2.88m	10'04" x 9'05"
Bedroom	3.83m x 3.32m	12'07" x 10'11"
Bathroom	2.00m x 2.20m	6'07" x 7'03"
Internal Area	52.13 sqm	561.12 sq ft
Balcony	1.80m x 3.00m	5'11" x 9'10"
Balcony Area	5.39 sqm	58.02 sq ft



FF Fridge Freezer DW Dishwasher W Wardrobe ST Storage UT Utility WM Washing Machine

Apartment layouts provide approximate measurements only. Furniture within the marketing plans is indicative and for guidance purposes only. Dimensions, which are taken from the indicated points of measurement, are for guidance only and are not intended to be used for carpet sizes, appliance space or items of furniture. Measurements are rounded down and we work towards 10% tolerance. Apartment areas are provided as gross internal areas and may vary. Bathroom and kitchen layouts are indicative only and are subject to change. Wardrobe size and position may vary. Ceiling heights may vary within select apartments. All private outdoor space dimensions and areas are approximate and may vary. The information contained within this document does not constitute part of any offer, contract or warranty. Whilst the plans have been prepared with all due care for the convenience of the intending purchaser, the information contained herein is a preliminary guide only. Ceiling height may vary within select apartments.

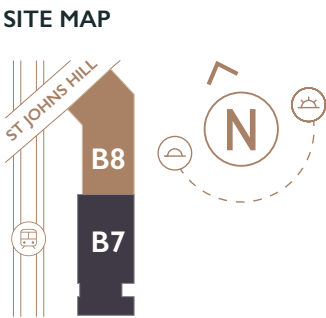
ONE BEDROOM

Twickel Apartments 8.07.03



DIMENSIONS		
Living/Dining	4.80m x 3.77m	15'09" x 12'04"
Kitchen	2.40m x 2.50m	7'10" x 8'02"
Bedroom	3.73m x 3.49m	12'03" x 11'05"
Bathroom	2.20m x 2.00m	7'03" x 6'07"
Internal Area	53.02 sqm	570.70 sq ft
Balcony	1.80m x 3.00m	5'11" x 9'10"
Terrace	6.80m x 2.94m	22'04" x 9'08"
Balcony Area	5.40 sqm	58.13 sq ft
Terrace Area	19.94 sqm	214.63 sq ft

POSITION				
G	L1	L2	L3	L4
	L5	L6	L7	L8



FF Fridge Freezer DW Dishwasher W Wardrobe ST Storage UT Utility WM Washing Machine

Apartment layouts provide approximate measurements only. Furniture within the marketing plans is indicative and for guidance purposes only. Dimensions, which are taken from the indicated points of measurement, are for guidance only and are not intended to be used for carpet sizes, appliance space or items of furniture. Measurements are rounded down and we work towards 10% tolerance. Apartment areas are provided as gross internal areas and may vary. Bathroom and kitchen layouts are indicative only and are subject to change. Wardrobe size and position may vary. Ceiling heights may vary within select apartments. All private outdoor space dimensions and areas are approximate and may vary. The information contained within this document does not constitute part of any offer, contract or warranty. Whilst the plans have been prepared with all due care for the convenience of the intending purchaser, the information contained herein is a preliminary guide only. Ceiling height may vary within select apartments.

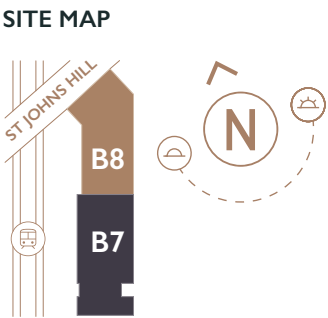
ONE BEDROOM

Twickel Apartments 8.08.03



DIMENSIONS		
Living/Dining	4.80m x 3.77m	15'09" x 12'04"
Kitchen	2.40m x 2.50m	7'10" x 8'02"
Bedroom	3.73m x 3.49m	12'03" x 11'05"
Bathroom	2.20m x 2.00m	7'03" x 6'07"
Internal Area	52.96 sqm	570.06 sq ft
Balcony	1.80m x 3.00m	5'11" x 9'10"
Balcony Area	5.40 sqm	58.13 sq ft

POSITION				
G	L1	L2	L3	L4
	L5	L6	L7	L8

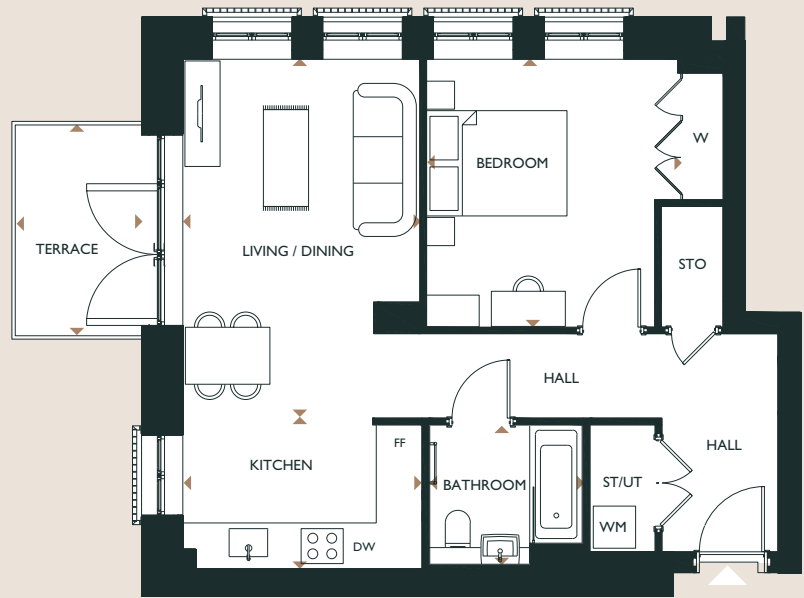


FF Fridge Freezer DW Dishwasher W Wardrobe ST Storage UT Utility WM Washing Machine

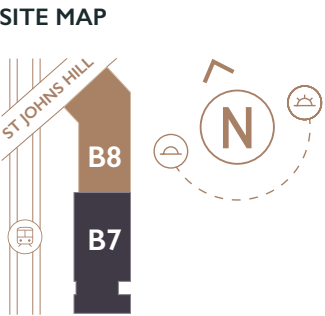
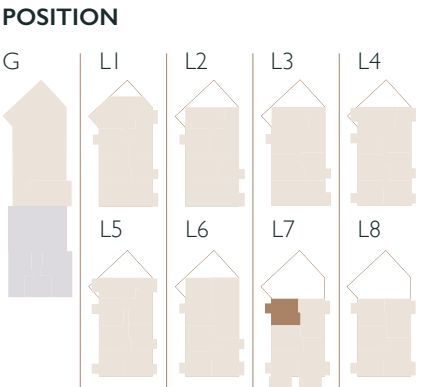
Apartment layouts provide approximate measurements only. Furniture within the marketing plans is indicative and for guidance purposes only. Dimensions, which are taken from the indicated points of measurement, are for guidance only and are not intended to be used for carpet sizes, appliance space or items of furniture. Measurements are rounded down and we work towards 10% tolerance. Apartment areas are provided as gross internal areas and may vary. Bathroom and kitchen layouts are indicative only and are subject to change. Wardrobe size and position may vary. Ceiling heights may vary within select apartments. All private outdoor space dimensions and areas are approximate and may vary. The information contained within this document does not constitute part of any offer, contract or warranty. Whilst the plans have been prepared with all due care for the convenience of the intending purchaser, the information contained herein is a preliminary guide only. Ceiling height may vary within select apartments.

ONE BEDROOM

Twickel Apartments 8.07.04



DIMENSIONS		
Living/Dining	3.38m × 5.11m	11'01" × 16'09"
Kitchen	3.41m × 2.14m	11'02" × 7'00"
Bedroom	3.58m × 3.81m	11'09" × 12'06"
Bathroom	2.20m × 2.00m	7'03" × 6'07"
Internal Area	60.48 sqm	651.00 sq ft
Terrace	1.80m × 3.00m	5'11" × 9'10"
Terrace Area	5.40 sqm	58.13 sq ft



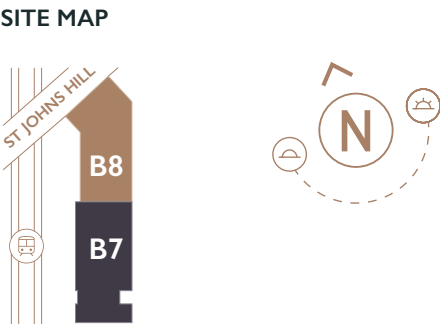
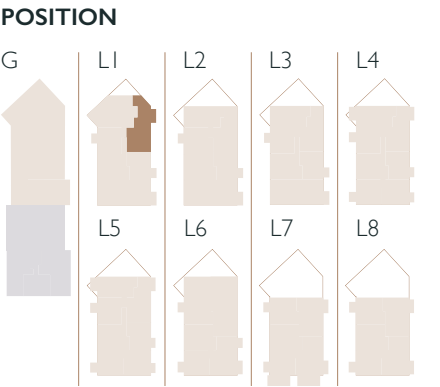
FF Fridge Freezer DW Dishwasher W Wardrobe ST Storage UT Utility WM Washing Machine

Apartment layouts provide approximate measurements only. Furniture within the marketing plans is indicative and for guidance purposes only. Dimensions, which are taken from the indicated points of measurement, are for guidance only and are not intended to be used for carpet sizes, appliance space or items of furniture. Measurements are rounded down and we work towards 10% tolerance. Apartment areas are provided as gross internal areas and may vary. Bathroom and kitchen layouts are indicative only and are subject to change. Wardrobe size and position may vary. Ceiling heights may vary within select apartments. All private outdoor space dimensions and areas are approximate and may vary. The information contained within this document does not constitute part of any offer, contract or warranty. Whilst the plans have been prepared with all due care for the convenience of the intending purchaser, the information contained herein is a preliminary guide only. Ceiling height may vary within select apartments.

TWO BEDROOM

Twickel Apartments 8.01.05

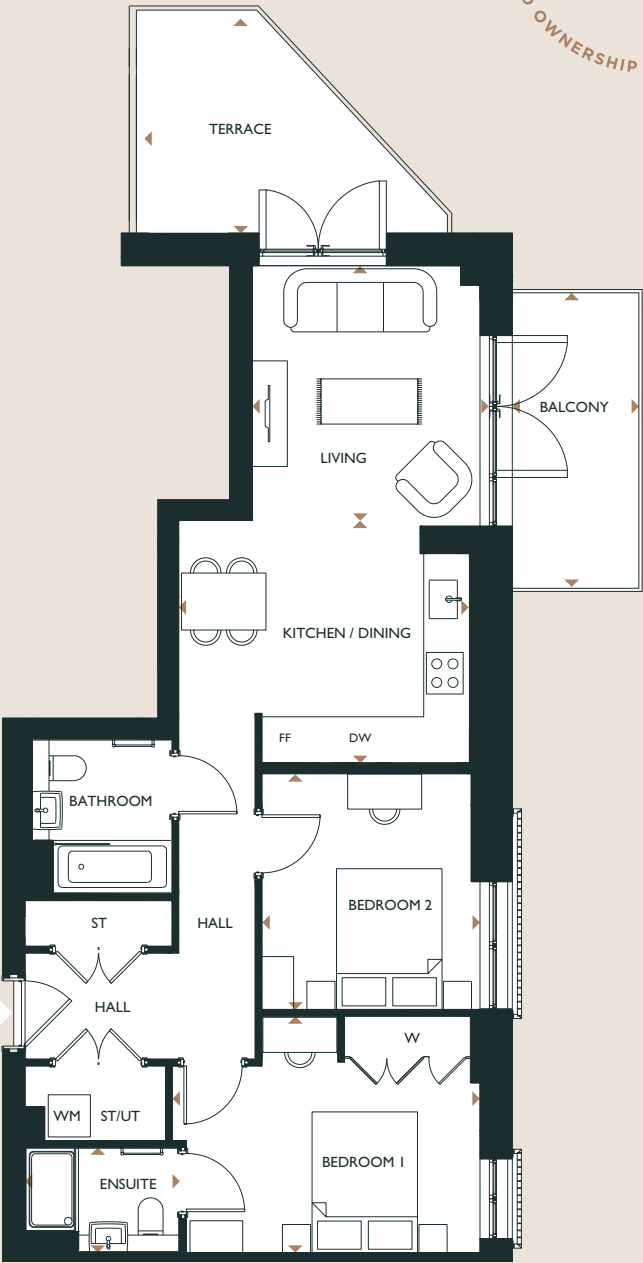
DIMENSIONS	
Living	3.26m × 3.62m 10'08" × 11'11"
Kitchen/Dining	4.13m × 3.44m 13'07" × 11'03"
Bedroom 1	4.38m × 3.36m 14'04" × 11'00"
Bedroom 2	3.10m × 3.35m 10'02" × 11'00"
Bathroom	2.09m × 2.20m 6'10" × 7'03"
Ensuite	2.20m × 1.50m 7'03" × 4'11"
Internal Area	72.32 sqm 778.45 sq ft
Terrace	4.32m × 3.05m 14'02" × 10'00"
Balcony	1.80m × 4.20m 5'11" × 13'09"
Terrace Area	9.64 sqm 103.76 sq ft
Balcony Area	7.56 sqm 81.38 sq ft



FF Fridge Freezer DW Dishwasher W Wardrobe ST Storage UT Utility WM Washing Machine

Apartment layouts provide approximate measurements only. Furniture within the marketing plans is indicative and for guidance purposes only. Dimensions, which are taken from the indicated points of measurement, are for guidance only and are not intended to be used for carpet sizes, appliance space or items of furniture. Measurements are rounded down and we work towards 10% tolerance. Apartment areas are provided as gross internal areas and may vary. Bathroom and kitchen layouts are indicative only and are subject to change. Wardrobe size and position may vary. Ceiling heights may vary within select apartments. All private outdoor space dimensions and areas are approximate and may vary. The information contained within this document does not constitute part of any offer, contract or warranty. Whilst the plans have been prepared with all due care for the convenience of the intending purchaser, the information contained herein is a preliminary guide only. Ceiling height may vary within select apartments.

ONE CLAPHAM
03
SHARED OWNERSHIP EDITION - BATTERSEA



TWO BEDROOM

Twickel Apartments 8.02.05 / 8.03.05 / 8.04.05 / 8.05.05

DIMENSIONS

Living	3.26m × 3.62m 10'08" × 11'11"
Kitchen/Dining	4.13m × 3.44m 13'07" × 11'03"
Bedroom 1	4.38m × 3.36m 14'04" × 11'00"
Bedroom 2	3.10m × 3.35m 10'02" × 11'00"
Bathroom	2.09m × 2.20m 6'10" × 7'03"
Ensuite	2.20m × 1.50m 7'03" × 4'11"

Internal Area **72.38 sqm**
779.09 sq ft

Balcony 1.80m × 4.20m
5'11" × 13'09"

Balcony Area **7.56 sqm**
81.38 sq ft

POSITION



SITE MAP



FF Fridge Freezer DW Dishwasher W Wardrobe ST Storage UT Utility WM Washing Machine

Apartment layouts provide approximate measurements only. Furniture within the marketing plans is indicative and for guidance purposes only. Dimensions, which are taken from the indicated points of measurement, are for guidance only and are not intended to be used for carpet sizes, appliance space or items of furniture. Measurements are rounded down and we work towards 10% tolerance. Apartment areas are provided as gross internal areas and may vary. Bathroom and kitchen layouts are indicative only and are subject to change. Wardrobe size and position may vary. Ceiling heights may vary within select apartments. All private outdoor space dimensions and areas are approximate and may vary. The information contained within this document does not constitute part of any offer, contract or warranty. Whilst the plans have been prepared with all due care for the convenience of the intending purchaser, the information contained herein is a preliminary guide only. Ceiling height may vary within select apartments.

TWO BEDROOM

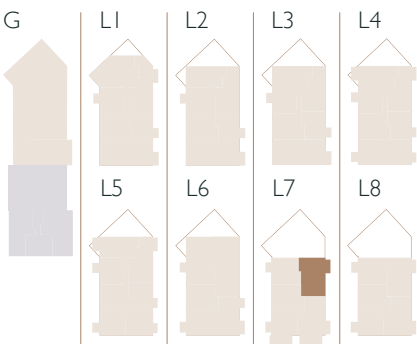
Twickel Apartments 8.07.01



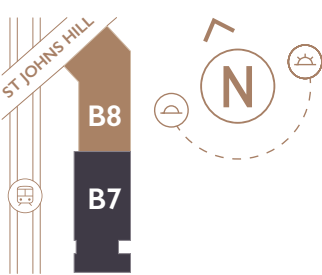
DIMENSIONS

Living/Dining	4.49m × 3.65m	14'09" × 12'00"
Kitchen	2.60m × 3.58m	8'06" × 11'09"
Bedroom 1	4.25m × 3.56m	13'11" × 11'08"
Bedroom 2	3.29m × 3.73m	10'09" × 12'03"
Bathroom	1.50m × 1.46m	4'11" × 4'09"
Ensuite	2.00m × 2.20m	6'07" × 7'03"
Internal Area	75.83 sqm	816.23 sq ft
Balcony	1.80m × 4.20m	5'11" × 13'09"
Balcony Area	7.56 sqm	81.38 sq ft

POSITION



SITE MAP



FF Fridge Freezer DW Dishwasher W Wardrobe ST Storage UT Utility WM Washing Machine

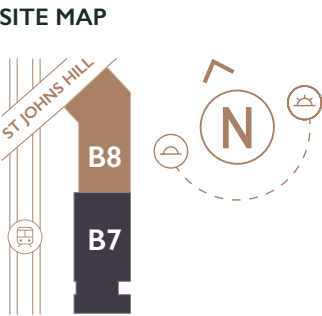
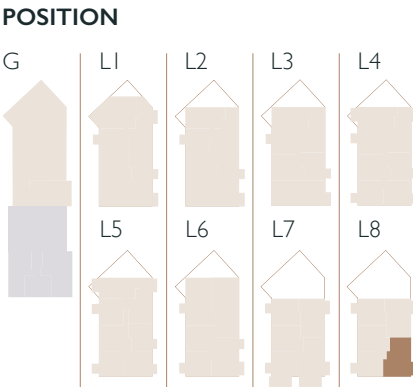
Apartment layouts provide approximate measurements only. Furniture within the marketing plans is indicative and for guidance purposes only. Dimensions, which are taken from the indicated points of measurement, are for guidance only and are not intended to be used for carpet sizes, appliance space or items of furniture. Measurements are rounded down and we work towards 10% tolerance. Apartment areas are provided as gross internal areas and may vary. Bathroom and kitchen layouts are indicative only and are subject to change. Wardrobe size and position may vary. Ceiling heights may vary within select apartments. All private outdoor space dimensions and areas are approximate and may vary. The information contained within this document does not constitute part of any offer, contract or warranty. Whilst the plans have been prepared with all due care for the convenience of the intending purchaser, the information contained herein is a preliminary guide only. Ceiling height may vary within select apartments.

TWO BEDROOM

Twickel Apartments 8.08.02



DIMENSIONS		
Living/Dining	4.95m x 4.08m	16'03" x 13'05"
Kitchen	2.69m x 3.00m	8'10" x 9'10"
Bedroom 1	3.55m x 3.74m	11'08" x 12'03"
Bedroom 2	3.43m x 3.36m	11'03" x 11'00"
Shower Room	2.20m x 1.50m	7'03" x 4'11"
Ensuite	2.00m x 2.20m	6'07" x 7'03"
Internal Area	77.44 sqm	833.56 sq ft
Balcony	1.80m x 4.20m	5'11" x 13'09"
External Area	7.56 sqm	81.38 sq ft



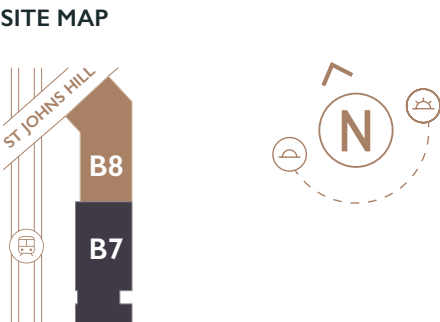
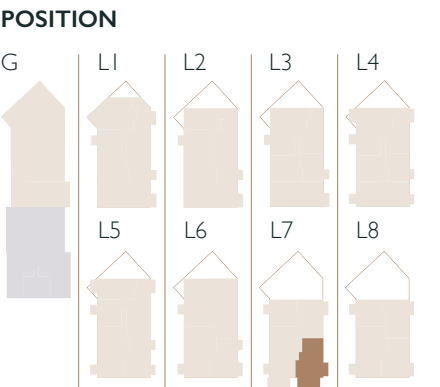
FF Fridge Freezer DW Dishwasher W Wardrobe ST Storage UT Utility WM Washing Machine

Apartment layouts provide approximate measurements only. Furniture within the marketing plans is indicative and for guidance purposes only. Dimensions, which are taken from the indicated points of measurement, are for guidance only and are not intended to be used for carpet sizes, appliance space or items of furniture. Measurements are rounded down and we work towards 10% tolerance. Apartment areas are provided as gross internal areas and may vary. Bathroom and kitchen layouts are indicative only and are subject to change. Wardrobe size and position may vary. Ceiling heights may vary within select apartments. All private outdoor space dimensions and areas are approximate and may vary. The information contained within this document does not constitute part of any offer, contract or warranty. Whilst the plans have been prepared with all due care for the convenience of the intending purchaser, the information contained herein is a preliminary guide only. Ceiling height may vary within select apartments.

TWO BEDROOM

Twickel Apartments 8.07.02

DIMENSIONS	
Living/Dining	4.95m x 4.08m 16'03" x 13'05"
Kitchen	2.69m x 3.00m 8'10" x 9'10"
Bedroom 1	3.55m x 3.74m 11'08" x 12'03"
Bedroom 2	3.43m x 3.36m 11'03" x 11'00"
Shower Room	2.20m x 1.50m 7'03" x 4'11"
Ensuite	2.00m x 2.20m 6'07" x 7'03"
Internal Area	77.44 sqm 833.56 sq ft
Balcony	1.80m x 4.20m 5'11" x 13'09"
Terrace	6.80m x 2.94m 22'04" x 9'08"
Balcony Area	7.56 sqm 81.38 sq ft
Terrace Area	19.94 sqm 214.63 sq ft



FF Fridge Freezer DW Dishwasher W Wardrobe ST Storage UT Utility WM Washing Machine

Apartment layouts provide approximate measurements only. Furniture within the marketing plans is indicative and for guidance purposes only. Dimensions, which are taken from the indicated points of measurement, are for guidance only and are not intended to be used for carpet sizes, appliance space or items of furniture. Measurements are rounded down and we work towards 10% tolerance. Apartment areas are provided as gross internal areas and may vary. Bathroom and kitchen layouts are indicative only and are subject to change. Wardrobe size and position may vary. Ceiling heights may vary within select apartments. All private outdoor space dimensions and areas are approximate and may vary. The information contained within this document does not constitute part of any offer, contract or warranty. Whilst the plans have been prepared with all due care for the convenience of the intending purchaser, the information contained herein is a preliminary guide only. Ceiling height may vary within select apartments.

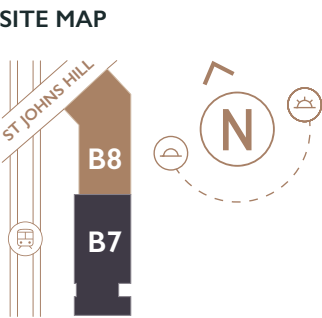
TWO BEDROOM

Twickel Apartments 8.06.02



DIMENSIONS		
Living/Dining	4.95m x 4.08m	16'03" x 13'05"
Kitchen	2.69m x 3.00m	8'10" x 9'10"
Bedroom 1	3.55m x 3.74m	11'08" x 12'03"
Bedroom 2	3.43m x 3.36m	11'03" x 11'00"
Shower Room	2.20m x 1.50m	7'03" x 4'11"
Ensuite	2.00m x 2.20m	6'07" x 7'03"
Internal Area	77.56 sqm	834.85 sq ft
Balcony 1	1.80m x 3.00m	5'11" x 9'10"
Balcony 2	1.80m x 4.20m	5'11" x 13'09"
Balcony 1 Area	5.40 sqm	58.13 sq ft
Balcony 2 Area	7.56 sqm	81.38 sq ft

POSITION				
G	L1	L2	L3	L4
	L5	L6	L7	L8

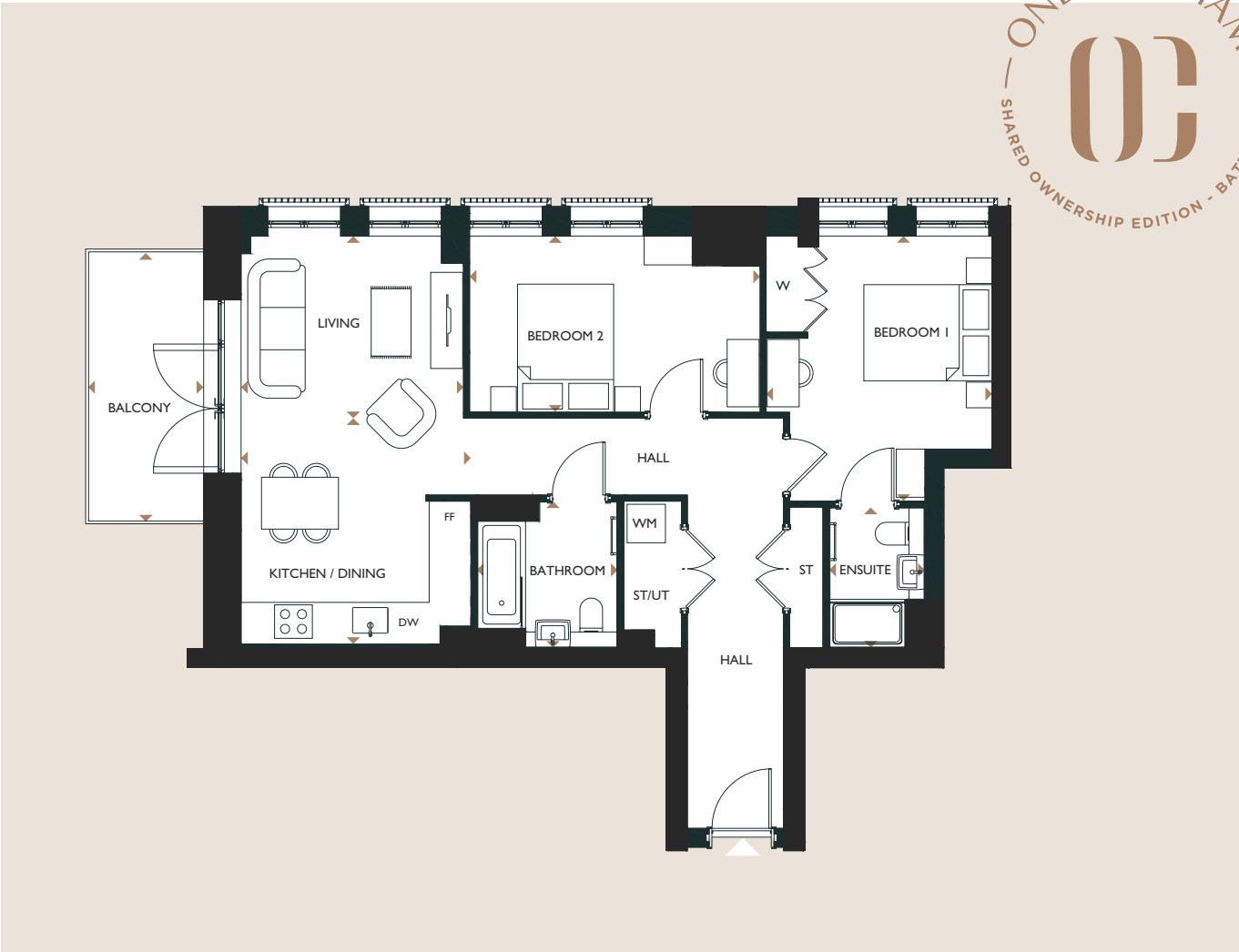


FF Fridge Freezer DW Dishwasher W Wardrobe ST Storage UT Utility WM Washing Machine

Apartment layouts provide approximate measurements only. Furniture within the marketing plans is indicative and for guidance purposes only. Dimensions, which are taken from the indicated points of measurement, are for guidance only and are not intended to be used for carpet sizes, appliance space or items of furniture. Measurements are rounded down and we work towards 10% tolerance. Apartment areas are provided as gross internal areas and may vary. Bathroom and kitchen layouts are indicative only and are subject to change. Wardrobe size and position may vary. Ceiling heights may vary within select apartments. All private outdoor space dimensions and areas are approximate and may vary. The information contained within this document does not constitute part of any offer, contract or warranty. Whilst the plans have been prepared with all due care for the convenience of the intending purchaser, the information contained herein is a preliminary guide only. Ceiling height may vary within select apartments.

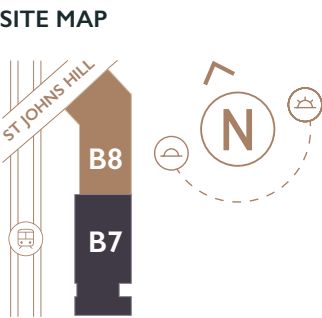
TWO BEDROOM

Twickel Apartments 8.02.04 / 8.03.04 / 8.04.04 / 8.05.04



DIMENSIONS		
Living	3.47m x 3.31m	11'05" x 10'10"
Kitchen/Dining	3.49m x 3.06m	11'05" x 10'00"
Bedroom 1	3.52m x 4.14m	11'07" x 13'07"
Bedroom 2	4.54m x 2.75m	14'11" x 9'00"
Bathroom	2.20m x 2.29m	7'03" x 7'06"
Ensuite	1.50m x 2.20m	4'11" x 7'03"
Internal Area	77.50 sqm	834.20 sq ft
Balcony	1.80m x 4.20m	5'11" x 13'09"
Balcony Area	7.55 sqm	81.27 sq ft

POSITION				
G	L1	L2	L3	L4
	L5	L6	L7	L8

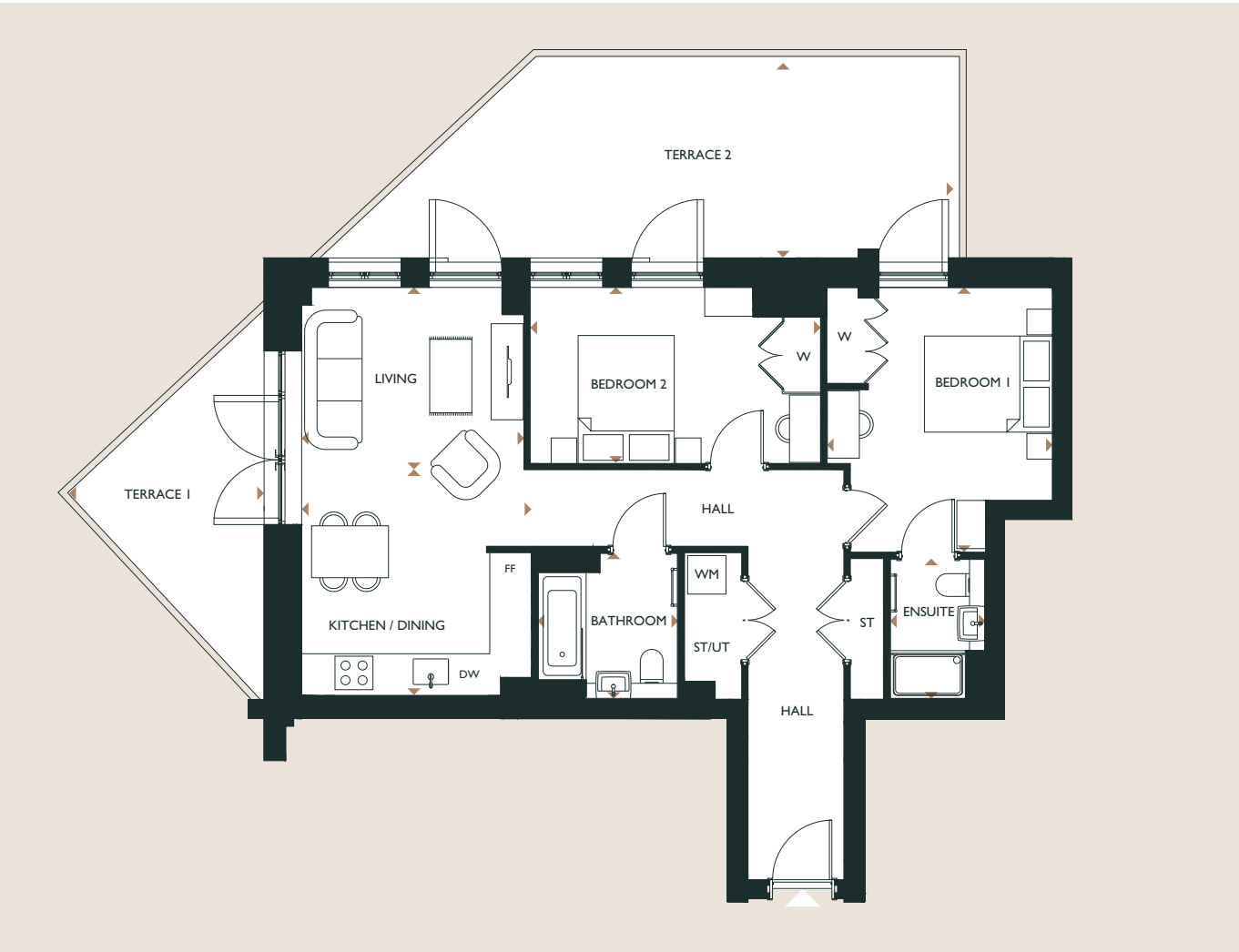


FF Fridge Freezer DW Dishwasher W Wardrobe ST Storage UT Utility WM Washing Machine

Apartment layouts provide approximate measurements only. Furniture within the marketing plans is indicative and for guidance purposes only. Dimensions, which are taken from the indicated points of measurement, are for guidance only and are not intended to be used for carpet sizes, appliance space or items of furniture. Measurements are rounded down and we work towards 10% tolerance. Apartment areas are provided as gross internal areas and may vary. Bathroom and kitchen layouts are indicative only and are subject to change. Wardrobe size and position may vary. Ceiling heights may vary within select apartments. All private outdoor space dimensions and areas are approximate and may vary. The information contained within this document does not constitute part of any offer, contract or warranty. Whilst the plans have been prepared with all due care for the convenience of the intending purchaser, the information contained herein is a preliminary guide only. Ceiling height may vary within select apartments.

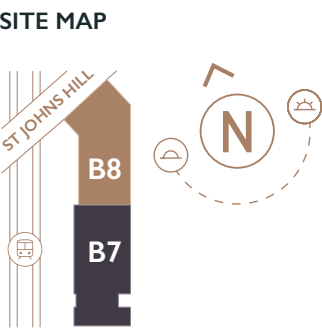
TWO BEDROOM

Twickel Apartments 8.01.04



DIMENSIONS			
Living	3.47m x 3.31m	11'05" x 10'10"	
Kitchen/Dining	3.49m x 3.06m	11'05" x 10'00"	
Bedroom 1	3.52m x 4.14m	11'07" x 13'07"	
Bedroom 2	4.54m x 2.75m	14'11" x 9'00"	
Bathroom	2.20m x 2.29m	7'03" x 7'06"	
Ensuite	1.50m x 2.20m	4'11" x 7'03"	
Internal Area	77.50 sqm	834.20 sq ft	
Terrace 1	3.05m x 6.10m	9'12" x 20'00"	
Terrace 2	9.87m x 3.05m	32'05" x 10'00"	
Terrace 1 Area	9.29 sqm	100.00 sq ft	
Terrace 2 Area	25.40 sqm	273.40 sq ft	

POSITION				
G	L1	L2	L3	L4
	L5	L6	L7	L8



FF Fridge Freezer DW Dishwasher W Wardrobe ST Storage UT Utility WM Washing Machine

Apartment layouts provide approximate measurements only. Furniture within the marketing plans is indicative and for guidance purposes only. Dimensions, which are taken from the indicated points of measurement, are for guidance only and are not intended to be used for carpet sizes, appliance space or items of furniture. Measurements are rounded down and we work towards 10% tolerance. Apartment areas are provided as gross internal areas and may vary. Bathroom and kitchen layouts are indicative only and are subject to change. Wardrobe size and position may vary. Ceiling heights may vary within select apartments. All private outdoor space dimensions and areas are approximate and may vary. The information contained within this document does not constitute part of any offer, contract or warranty. Whilst the plans have been prepared with all due care for the convenience of the intending purchaser, the information contained herein is a preliminary guide only. Ceiling height may vary within select apartments.

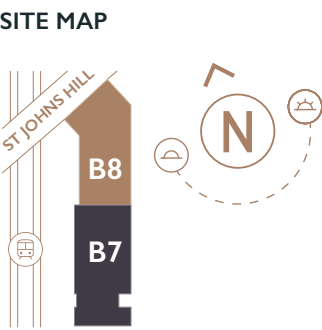
TWO BEDROOM

Twickel Apartments 8.00.01



DIMENSIONS			
Living/Dining	3.96m x 5.08m	12'11" x 16'08"	
Kitchen	3.99m x 3.68m	13'01" x 12'01"	
Bedroom 1	5.20m x 3.70m	17'01" x 12'01"	
Bedroom 2	3.00m x 4.91m	9'10" x 16'01"	
Shower Room	1.50m x 2.20m	4'11" x 7'03"	
Ensuite	2.28m x 2.63m	7'05" x 8'07"	
Internal Area	99.99 sqm	1076.28 sq ft	
Terrace	7.55m x 1.59m	24'09" x 5'02"	
Terrace Area	11.97 sqm	128.85 sq ft	

POSITION				
G	L1	L2	L3	L4
	L5	L6	L7	L8



FF Fridge Freezer DW Dishwasher W Wardrobe ST Storage UT Utility WM Washing Machine

Apartment layouts provide approximate measurements only. Furniture within the marketing plans is indicative and for guidance purposes only. Dimensions, which are taken from the indicated points of measurement, are for guidance only and are not intended to be used for carpet sizes, appliance space or items of furniture. Measurements are rounded down and we work towards 10% tolerance. Apartment areas are provided as gross internal areas and may vary. Bathroom and kitchen layouts are indicative only and are subject to change. Wardrobe size and position may vary. Ceiling heights may vary within select apartments. All private outdoor space dimensions and areas are approximate and may vary. The information contained within this document does not constitute part of any offer, contract or warranty. Whilst the plans have been prepared with all due care for the convenience of the intending purchaser, the information contained herein is a preliminary guide only. Ceiling height may vary within select apartments.

THREE BEDROOM

Twickel Apartments 8.01.02 / 8.02.02 / 8.03.02



DIMENSIONS		
Living/Dining	4.63m x 4.91m	15'03" x 16'01"
Kitchen	3.66m x 3.47m	12'00" x 11'05"
Bedroom 1	3.65m x 4.05m	11'11" x 13'03"
Bedroom 2	3.60m x 3.66m	11'10" x 12'00"
Bedroom 3	2.35m x 3.88m	7'09" x 12'09"
Bathroom	2.00m x 2.20m	6'07" x 7'03"
Ensuite	2.27m x 2.63m	7'05" x 8'07"
Internal Area	108.04 sqm	1162.93 sq ft
Balcony	4.20m x 1.80m	13'09" x 5'11"
Balcony Area	7.56 sqm	81.38 sq ft

POSITION				
G	L1	L2	L3	L4
	L5	L6	L7	L8

SITE MAP

Wheelchair adaptable home

FF Fridge Freezer DW Dishwasher W Wardrobe ST Storage UT Utility WM Washing Machine

Apartment layouts provide approximate measurements only. Furniture within the marketing plans is indicative and for guidance purposes only. Dimensions, which are taken from the indicated points of measurement, are for guidance only and are not intended to be used for carpet sizes, appliance space or items of furniture. Measurements are rounded down and we work towards 10% tolerance. Apartment areas are provided as gross internal areas and may vary. Bathroom and kitchen layouts are indicative only and are subject to change. Wardrobe size and position may vary. Ceiling heights may vary within select apartments. All private outdoor space dimensions and areas are approximate and may vary. The information contained within this document does not constitute part of any offer, contract or warranty. Whilst the plans have been prepared with all due care for the convenience of the intending purchaser, the information contained herein is a preliminary guide only. Ceiling height may vary within select apartments.

TWO BEDROOM

Munstead Apartments 7.00.01



DIMENSIONS		
Living	4.15m x 2.98m	13'07" x 9'09"
Kitchen/Dining	3.64m x 3.50m	11'11" x 11'06"
Bedroom 1	4.35m x 3.24m	14'03" x 10'08"
Bedroom 2	3.64m x 3.14m	11'11" x 10'04"
Shower Room	2.20m x 1.50m	7'03" x 4'11"
Ensuite	2.00m x 2.20m	6'07" x 7'03"
Internal Area	71.73 sqm	772.10 sq ft
Terrace	1.59m x 1.35m	5'02" x 44'07"
Terrace Area	21.35 sqm	229.81 sq ft

POSITION				
G	L1	L2	L3	L4
	L5	L6	L7	L8

SITE MAP

Wheelchair adaptable home

FF Fridge Freezer DW Dishwasher W Wardrobe ST Storage UT Utility WM Washing Machine

Apartment layouts provide approximate measurements only. Furniture within the marketing plans is indicative and for guidance purposes only. Dimensions, which are taken from the indicated points of measurement, are for guidance only and are not intended to be used for carpet sizes, appliance space or items of furniture. Measurements are rounded down and we work towards 10% tolerance. Apartment areas are provided as gross internal areas and may vary. Bathroom and kitchen layouts are indicative only and are subject to change. Wardrobe size and position may vary. Ceiling heights may vary within select apartments. All private outdoor space dimensions and areas are approximate and may vary. The information contained within this document does not constitute part of any offer, contract or warranty. Whilst the plans have been prepared with all due care for the convenience of the intending purchaser, the information contained herein is a preliminary guide only. Ceiling height may vary within select apartments.



HOMEOWNER STORIES

Shared Ownership is a part buy/part rent scheme that makes it possible for first time buyers to purchase a property that otherwise would not have been affordable. It is a government-backed scheme launched in 2006 for people who are unable to afford to buy a home at full market value.

Shared Ownership homes in London help you get on the property ladder in an affordable way. You can usually buy an initial share of 25% to 75% of the value of a property, and you'll need to take out a mortgage to pay for your share of the home's purchase price.

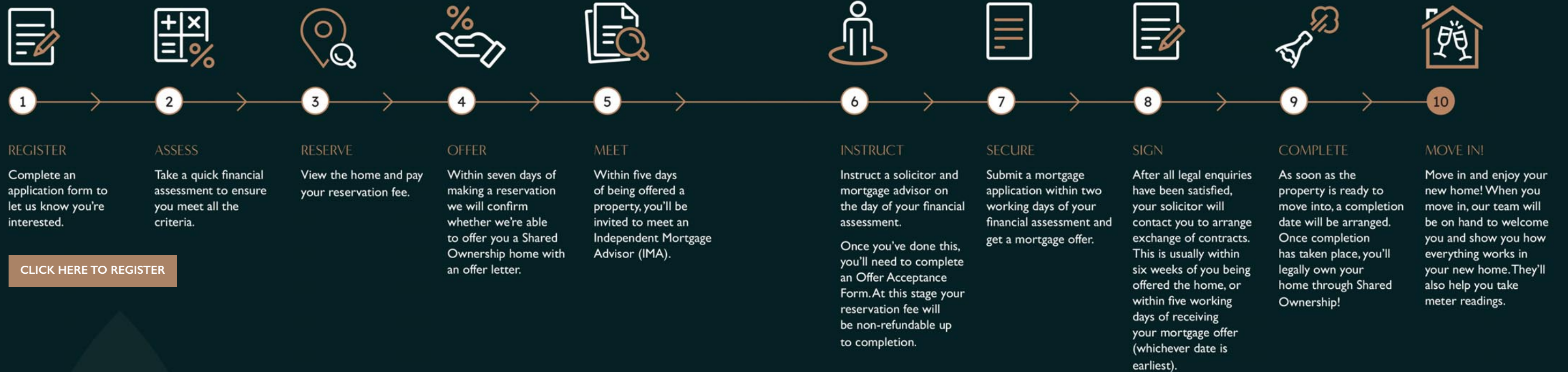
You will then pay a subsidised rent on the share you don't buy, and there will also be a monthly service charge to be paid on your home.

"I had already done my research, discovered Shared Ownership and was pretty set on the area I wanted to buy in. This is how I found Peabody New Homes."

Ekta, Peabody Shared Ownership purchaser



THE SHARED OWNERSHIP JOURNEY



[CLICK HERE TO REGISTER](#)

Find out more about
Shared Ownership

Peabody has a range of
resources to help you learn
more about what is involved.

[CLICK HERE TO FIND OUT MORE](#)



More than just a place to live

We at Peabody have a proud legacy of helping generations of homebuyers and residents find their place in thriving neighbourhoods, communities and homes for over 160 years.

The team at Peabody New Homes is dedicated to finding you a home that is more than just a place to live. A place you can call your own. A place to belong. A place that you're proud to call home.

Find @PeabodyNewHomes on



BUILDING HISTORY

Formed over 160 years ago by the American financier and philanthropist George Peabody, Peabody is one of the UK's oldest and largest housing associations responsible for more than 109,000 homes and around 220,000 residents across London and the Home Counties.



CUSTOMER FOCUS

Whether it's your first or forever home, we know that buying a new place can be a demanding time. Our sales team is committed to guiding you through the process and helping you every step of the way. Rated "Excellent" on Trustpilot, we're proud to offer you a service that makes a difference.



QUALITY, DESIGN & SUSTAINABILITY

Peabody's reputation is one of the most respected in the housing industry renowned for quality, multi-award-winning and innovative design. We work with industry experts and continually monitor quality throughout the building process to reduce our impact on climate change, lessen our carbon footprint and create properties people are proud to call home.

Our Greener Homes Programme is our commitment to the environment and will aim to minimise our impact on the planet and support thriving neighbourhoods.

[CLICK HERE TO FIND OUT MORE](#)



SOCIAL IMPACT

Our social purpose is why we exist. We re-invest the surplus made from the sale of our homes to provide more homes and services to those who need it most. We deliver services that support customers and the wider communities that we work in, and invest in local projects through our Community Foundation.

[CLICK HERE TO FIND OUT MORE](#)

*2024/25 Annual Report

Every care has been taken in the preparation of this brochure. The details contained herein are for guidance only and should not be relied upon as exactly describing any of the particular material illustrated or written by any order under the Consumer Protection from Unfair Trading Regulations 2008. This information does not constitute a contract, part of a contract or warranty. The developer operates a programme of continuous product development. Features, internal and external, may vary from time to time and may differ from those shown in the brochure. Computer generated images and photography used within this brochure are indicative only. One Clapham is a marketing name and may not form part of the postal address for these properties. Apartment layouts provide approximate measurements only. Dimensions, which are taken from the indicated points of measurement, are for guidance only and are not intended to be used for carpet sizes, appliance space or items of furniture. Measurements are rounded down and we work towards 5% tolerance. Apartment areas are provided as gross internal areas and may vary. Bathroom and kitchen layouts are indicative only and are subject to change. Wardrobe size and position may vary. Ceiling height may vary within select apartments. All balcony/terrace dimensions and areas are approximate and may vary. The information contained within this document does not constitute part of any offer, contract or warranty. Whilst the plans have been prepared with all due care for the convenience of the intending purchaser, the information contained herein is a preliminary guide only. Please speak to the sales team for more information. January 2026.

