



Persimmon

Together, we make your home



Jubilee Gardens

Wakefield • West Yorkshire

Together, we make your home

When it comes to designing a new development, we apply the same philosophy every time – make it unique, make it personal. That's because we understand your new home is more than simply bricks and mortar. It's a private place of sanctuary where we hope you'll laugh, entertain and escape for many years to come.

"With over 50 years of building excellence, you can find out more about us on page 4"

5 stars!

We're proud of our 5 star builder status awarded by the national Home Builders Federation (HBF). It's a reflection of our commitment to delivering excellence always and putting our customers at the heart of all we do.



Jubilee Gardens

Find out more

| | |
|--|----|
| About Persimmon Homes | 4 |
| Your journey with us and schemes to help | 6 |
| Living at Jubilee Gardens | 8 |
| Development layout | 10 |
| Our homes | 12 |
| Specifications | 22 |
| Sustainability | 24 |
| Personalise with Finishing Touches | 26 |
| Proud to be building communities | 28 |
| Reasons to buy from us | 30 |



Who we are

A little bit about us

You're about to make one of the most exciting investments of your life! A beautiful place to call home for years to come. Here are some reasons to invest in a Persimmon home...

Over 50 years expertise

We've been building homes and communities since the early seventies, and just as fashions have moved on, so too has construction. Over half a century we've perfected processes, fine-tuned materials and honed skills to make us one of today's most modern and progressive home builders.

Sustainability mission

We're committed to reducing our impact on the planet and building for a better tomorrow, with a dedicated in-house team focused on this. [Read more on page 24](#)



Persimmon in numbers

It's not all about numbers we know, but to give you sense of scale here are a few:

9,922

homes
delivered in
2023

200+

locations
across
the UK

4800+

employees
make it all
happen

452

acres of
public space
created

£2.3bn

invested in
local communities
over the last
5 years



"Building sustainable homes and community hubs"

Save money on your energy bills

The increased thermal retention from our insulation and double glazing, along with reduced water use thanks to efficient appliances, mean you'll automatically save money on your energy and water bills – and with the rising cost of living, this can make a real difference.



Take a look at the recently published HBF Watt a Save report to find out how much you could save.

The Persimmon Pledge

The Persimmon Pledge is our commitment to making sure you receive exceptional customer service and relevant communications before, during and after you've moved in.

Find out more about the Persimmon Pledge.



Accessible homes

It's crucial that your new home works perfectly for you and your needs. We build in line with Approved Document M accessibility requirements.



Scan the QR code to find out what each rating means.

Giving back

We do everything we can to give back to our communities and have proudly contributed towards community hubs, children's play areas, schools and sports facilities.

Our 'Community Champions' and 'Building Futures' programmes help to raise funds for projects and charities across Great Britain. If you'd like to get involved visit persimmonhomes.com/community-champions to see if you could apply to support your local community.

Help when you need it

You'll have a dedicated customer care helpline, plus cover for emergencies like complete loss of electricity, gas, water or drainage.

10-year warranty

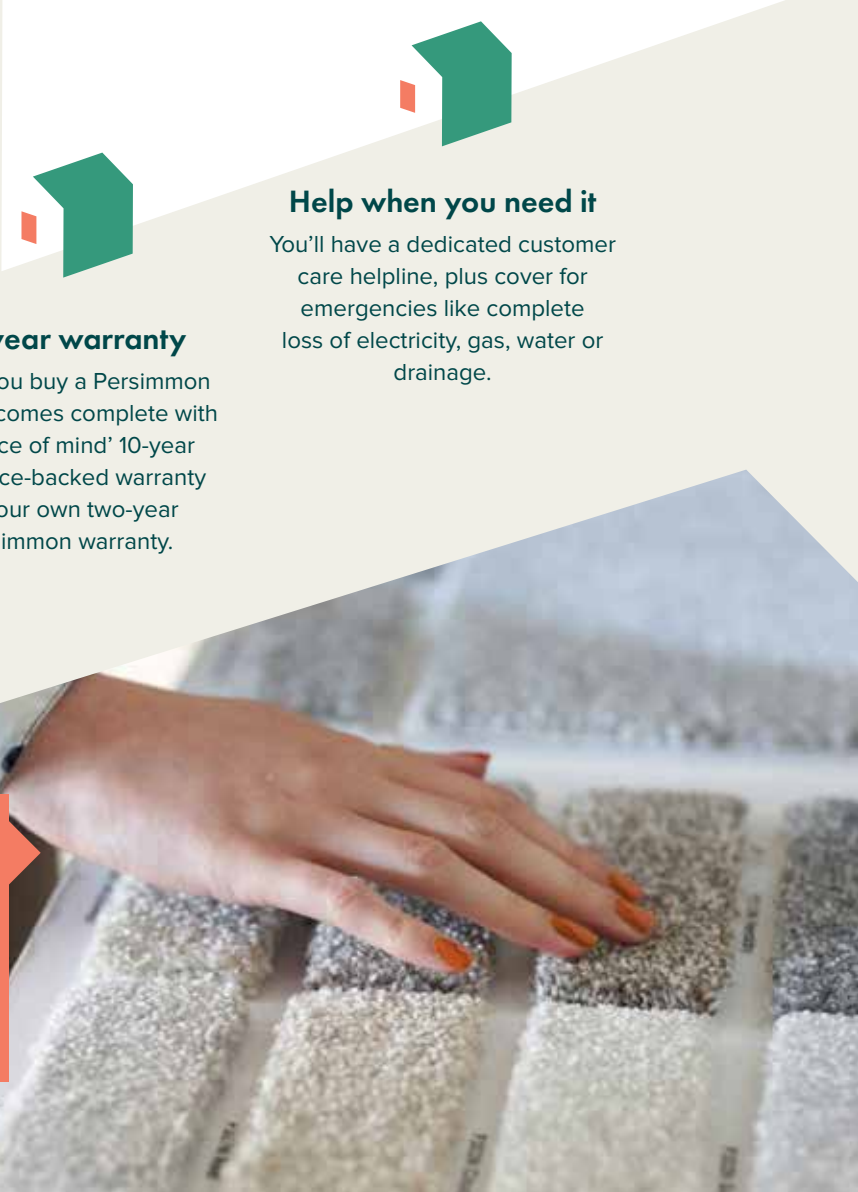
When you buy a Persimmon home it comes complete with a 'peace of mind' 10-year insurance-backed warranty and our own two-year Persimmon warranty.

Happy hour

We run Customer Construction Clinics from our on-site sales offices each Monday from 5-6pm. Pop in to see the team both during and after you've moved in to your new home.

Finishing Touches

We know you'll want to make your home your own, so we created 'Finishing Touches', our home personalisation service. **Read more on page 26**





With you all the way

Your journey with us

From finding your perfect new home to moving in,
we're here to help every step of the way.

1.



2.



3.

Reservation

So you've seen a home you love? Speak to one of our friendly sales advisors who will help you secure your dream home.

Solicitor

You'll need to instruct a solicitor or conveyancer at the point of reservation. Your sales advisor can recommend a local independent company.

Mortgage application

Most people will need to apply for a mortgage. We can recommend independent financial advisors to give you the best impartial advice.

4.



5.



6.

Personalise!

The bit you've been waiting for! Making the final choices for your new home. Depending on build stage you can also choose from a range of Finishing Touches.

Exchange contracts

One step closer to moving in – this is where we exchange contracts and your solicitor will transfer your deposit.

Quality assurance

Your home will be thoroughly inspected by site teams and will also have an Independent Quality Inspection to make sure it's ready for you to move into.

7.



8.



9.

Home demo

Another exciting milestone! Here's where you get to see your new home before completion. You'll be shown how everything works and any questions can be answered.

Handover

The moment you've been waiting for! The paperwork has been completed, the money transferred and now it's time to move in and start unpacking...

After-care

Our site and customer care teams will support you every step of the way. You'll receive a dedicated customer care line number to deal with any issues.

[persimmonhomes.com](https://www.persimmonhomes.com)



Need help?

One of the best things about buying a new-build home is the amazing offers and schemes you could benefit from. T&Cs apply.



PART
EXCHANGE

Part Exchange


Need to sell your home? We could be your buyer. Save money and time and stay in your home until your new one completes.



HOME
CHANGE

Home Change

Sell your current home with our support. We'll take care of estate agent fees and offer expert advice to help get you moving.

- 
- A modern kitchen with grey cabinets, a white countertop, and a built-in oven. On the counter, there is a toaster, a cutting board, and some kitchen utensils. A dark apron hangs on the wall to the left. The lighting is warm and comes from under-cabinet lights.
- Choice of 2, 3 and 4-bedroom homes
 - Excellent transport links
 - Close to Leeds
 - Good range of local amenities



Scan me!

For availability and pricing
on our beautiful new homes
at Jubilee Gardens.



Wakefield • West Yorkshire

Jubilee Gardens

Situated less than 2 miles north of Wakefield, Jubilee Gardens offers an impressive collection of 2, 3 and 4-bedroom homes in beautiful styles to suit a range of buyers.

Jubilee Gardens is a consciously-designed new community of approximately 315 homes, which will blend seamlessly with the surrounding area. The development will be easily accessible from the A650, allowing for speedy connections to Wakefield and beyond. Open green spaces, such as New Park, are just a stone's throw away as are local amenities, all of which add to the convenience of this location.

The city of Wakefield lies on the banks of the River Calder, and on the eastern edge of the Pennines in the lower Calder Valley. The historic city centre is home to Wakefield's dazzling cathedral, which is a recognisable feature of the city's skyline, and boasts the tallest spire in Yorkshire. In town you'll find plenty of cafés, restaurants and pubs to enjoy as well as numerous galleries and museums. For the avid shopper, there's the Trinity Walk shopping centre

which is home to over 65 stores, hair salons, a supermarket, a bank, a gym, an abundance of places to eat and on site parking. For those who love the great outdoors, Wakefield is the best spot to enjoy all that the beautiful Yorkshire countryside has to offer. Take in the stunning views across the Yorkshire Dales and the Peak District, both of which are less than an hour away. Or spend a day meandering through Nostell Priory and Parkland, Sandal Castle or the acclaimed Yorkshire Sculpture Park.

Easily within reach

Just 10 miles south east of Leeds, Wakefield has excellent transport links with good access to the M1 and M62 motorways. Wakefield's bus station is within walking distance of Jubilee Gardens and Wakefield Westgate railway station provides frequent services to cities including Leeds, Doncaster, Edinburgh, Birmingham and London— ideal for commuters. For travel further afield, Leeds Bradford Airport offers a wide range of national and international destinations.

START EXPLORING

Start exploring

Wakefield
1.5 miles

Bradford
16.2 miles

Leeds
16.6 miles

Huddersfield
22 miles



Jubilee Gardens

Our homes

2 bedroom

 **The Alnmouth**

3 bedroom

 **The Danbury**

 **The Delamare**

 **The Sherwood**

 **The Barnwood**

 **The Saunton**

4 bedroom

 **The Burnham**

 **The Whinfell**

 **The Brampton**

 **The Marston**

 **Affordable housing**

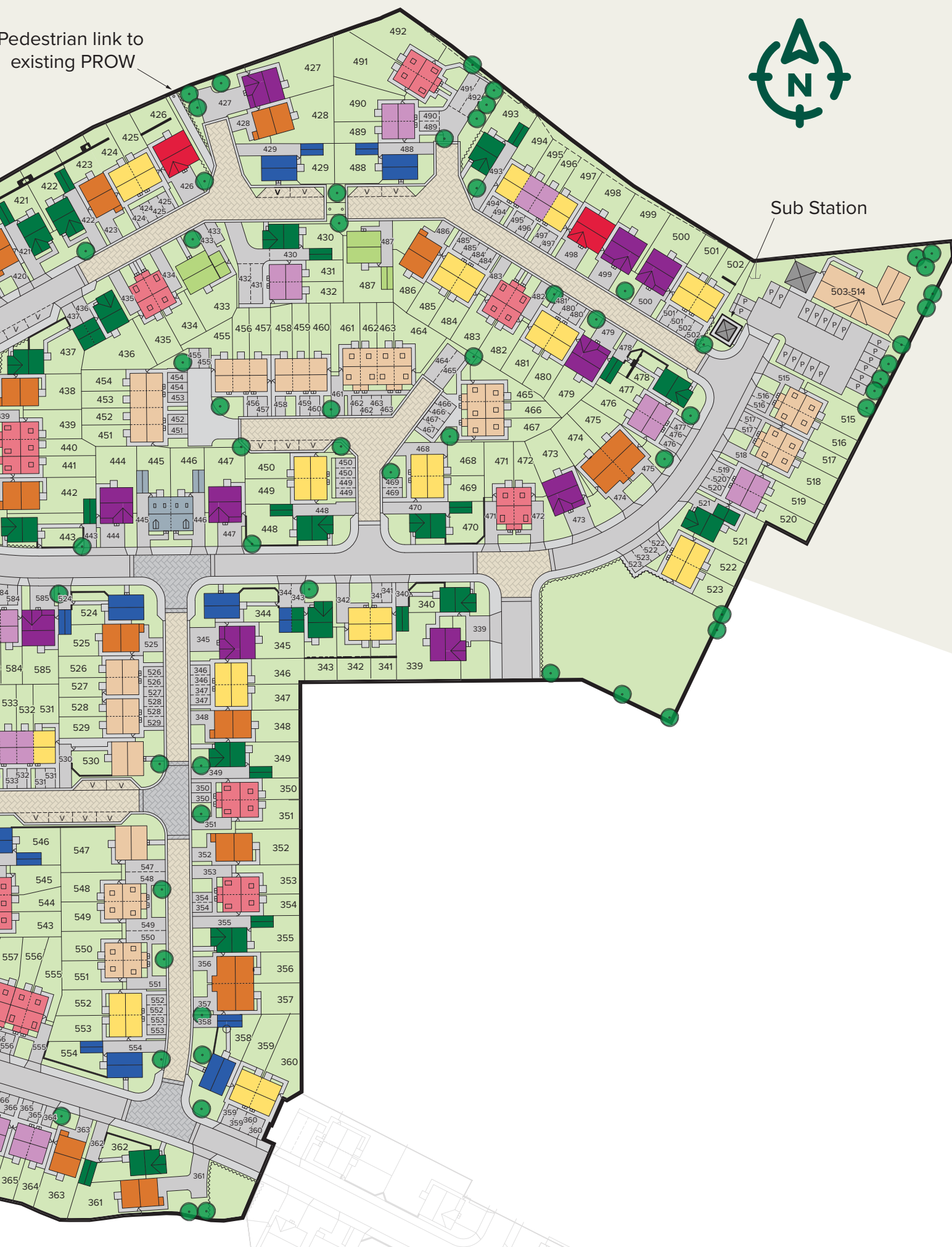
Pedestrian link to
existing PROW



Pedestrian link to
existing PROW



Sub Station



This site layout is intended for illustrative purposes only, and may be subject to change, for example, in response to market demand, ground conditions or technical and planning reasons. Trees, planting and public open space shown are indicative, actual numbers and positions may vary. This site plan does not form any part of a warranty or contract. Further information is available from a site sales advisor. The location of the affordable housing on this plan is indicative only and both the location and number of affordable housing plots may be subject to change.

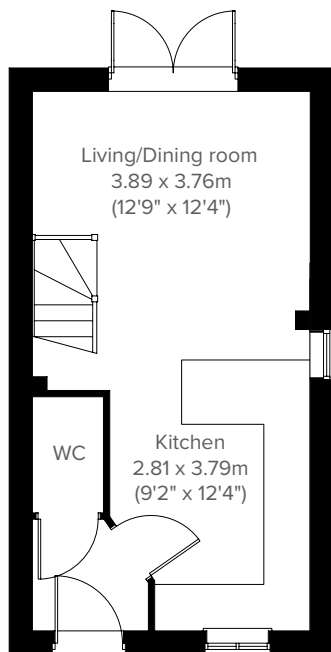


2 bedroom home

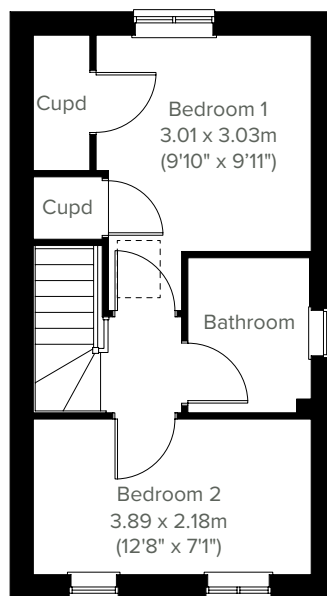
The Alnmouth



Perfectly-proportioned, the Alnmouth has a stylish open plan kitchen/dining/living room with French doors leading into the garden. It also features flexible first floor rooms, a good-sized family bathroom and off-road parking. Ideal if you're a first-time buyer looking for a fresh modern home you can make your own.



GROUND FLOOR



1ST FLOOR

Please note that elevation treatments and window/door positions may vary from plot to plot. Plot specific information will be confirmed on your reservation check list.

This information is for guidance only and does not form any part of any contract or constitute a warranty. Illustrations are of typical elevations and may vary. Floor plans are not drawn to scale and window positions may vary. Room dimensions are subject to a +/- 50mm (2") tolerance and are based on the maximum dimensions in each room. Please consult your sales advisor on site for specific elevations, room dimensions and external finishes. The PEA ratings are estimated and vary between home types, orientation and developments.

12

Predicted Energy Assessment: B

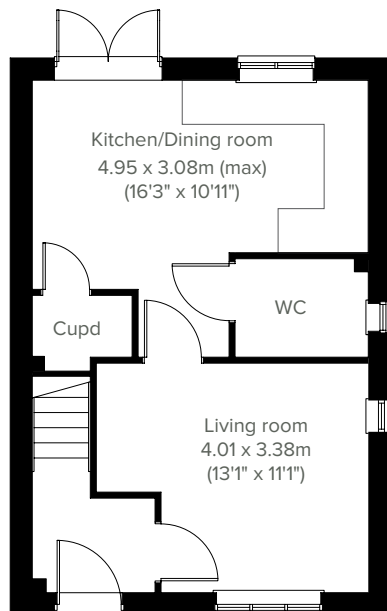


The Danbury

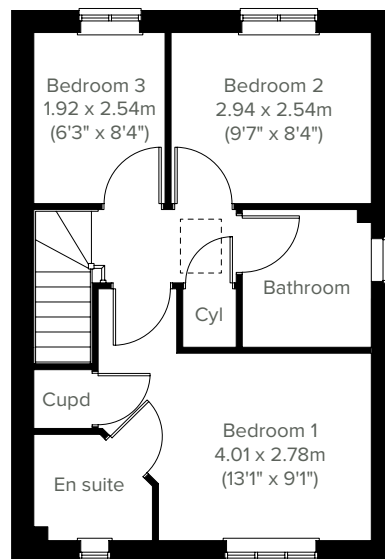
3 bedroom home



Perfect for the way we live today, the three-bedroom Danbury has a modern open plan kitchen/dining room with garden access and a spacious front-aspect living room that's ideal for entertaining. Upstairs there are three bedrooms - bedroom one has an en suite - and a family-sized bathroom. Appealing to families, first-time buyers and young professionals.



GROUND FLOOR



1ST FLOOR

Please note that elevation treatments and window/door positions may vary from plot to plot. Plot specific information will be confirmed on your reservation check list.

This information is for guidance only and does not form any part of any contract or constitute a warranty. Illustrations are of typical elevations and may vary. Floor plans are not drawn to scale and window positions may vary. Room dimensions are subject to a +/- 50mm (2") tolerance and are based on the maximum dimensions in each room. Please consult your sales advisor on site for specific elevations, room dimensions and external finishes. The PEA ratings are estimated and vary between home types, orientation and developments.

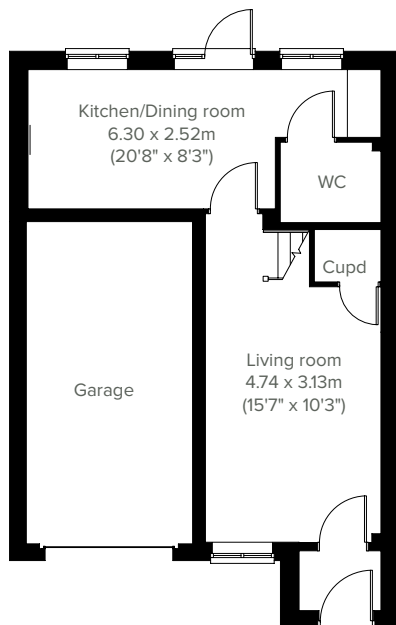


3 bedroom home

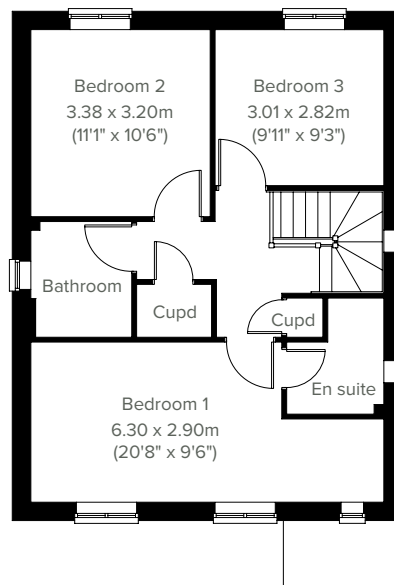
The Delamare



The Delamare is a three-bedroom family home, with an integral garage, a bright and modern open plan kitchen/dining room with a door leading into the garden and a front-aspect living room giving you a place to relax. The downstairs WC, three handy storage cupboards, family bathroom and an en suite to bedroom one mean it ticks all the boxes for practical family living.



GROUND FLOOR



1ST FLOOR

Please note that elevation treatments and window/door positions may vary from plot to plot. Plot specific information will be confirmed on your reservation check list.

This information is for guidance only and does not form any part of any contract or constitute a warranty. Illustrations are of typical elevations and may vary. Floor plans are not drawn to scale and window positions may vary. Room dimensions are subject to a +/- 50mm (2") tolerance and are based on the maximum dimensions in each room. Please consult your sales advisor on site for specific elevations, room dimensions and external finishes. The PEA ratings are estimated and vary between home types, orientation and developments.

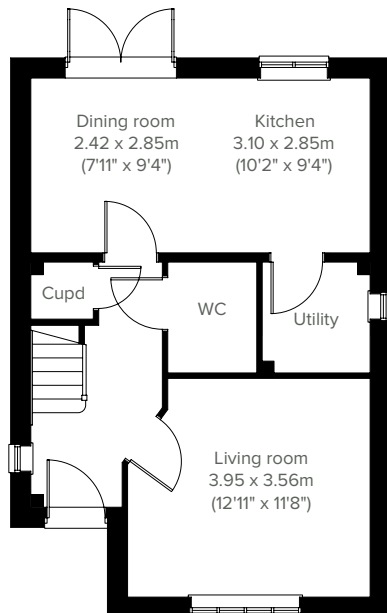


The Sherwood

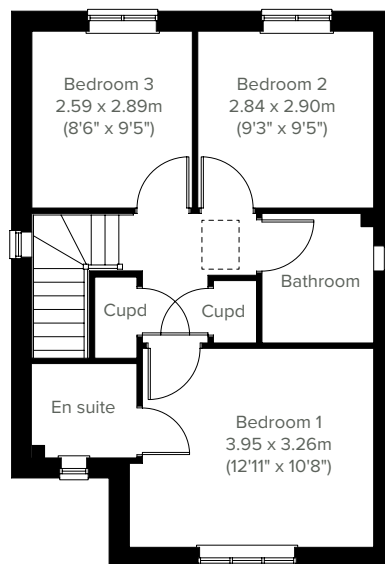
3 bedroom home



The Sherwood is a modern home ideal for family life. This three-bedroom home features an open plan kitchen/dining room with French doors leading into the garden, a handy utility room, a front-aspect living room, plus under-stairs storage and a WC. The first floor also has three good-sized bedrooms, one with an en suite, and the main family bathroom. The Sherwood also benefits from a detached garage.



GROUND FLOOR



1ST FLOOR

Please note that elevation treatments and window/door positions may vary from plot to plot. Plot specific information will be confirmed on your reservation check list.

This information is for guidance only and does not form any part of any contract or constitute a warranty. Illustrations are of typical elevations and may vary. Floor plans are not drawn to scale and window positions may vary. Room dimensions are subject to a +/- 50mm (2") tolerance and are based on the maximum dimensions in each room. Please consult your sales advisor on site for specific elevations, room dimensions and external finishes. The PEA ratings are estimated and vary between home types, orientation and developments.

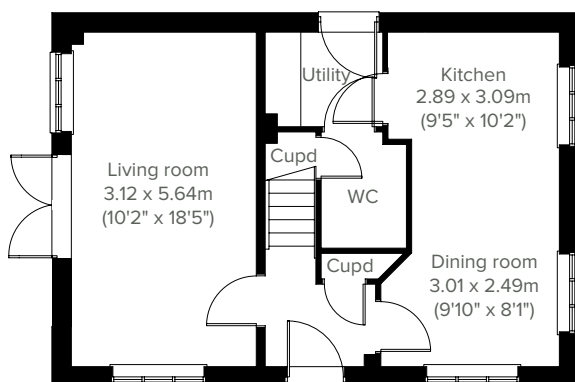


3 bedroom home

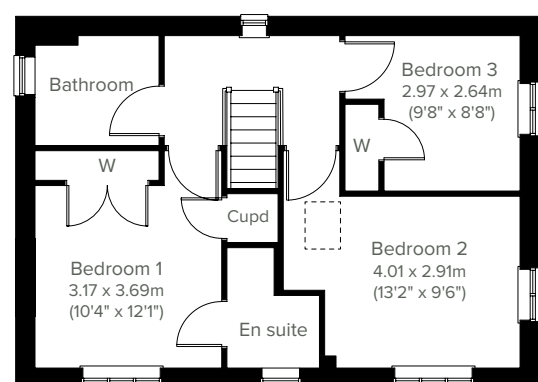
The Barnwood



A thoughtfully-designed three-bedroom family home with much to offer, the Barnwood has a bright and modern open plan kitchen/dining room leading to a handy utility room. The spacious living room has French doors leading into the garden. The inner hallway, downstairs WC and cupboards take care of everyday storage. Plus there's an en suite to bedroom one, a family bathroom and a detached garage.



GROUND FLOOR



1ST FLOOR

Please note that elevation treatments and window/door positions may vary from plot to plot. Plot specific information will be confirmed on your reservation check list.

This information is for guidance only and does not form any part of any contract or constitute a warranty. Illustrations are of typical elevations and may vary. Floor plans are not drawn to scale and window positions may vary. Room dimensions are subject to a +/- 50mm (2") tolerance and are based on the maximum dimensions in each room. Please consult your sales advisor on site for specific elevations, room dimensions and external finishes. The PEA ratings are estimated and vary between home types, orientation and developments.

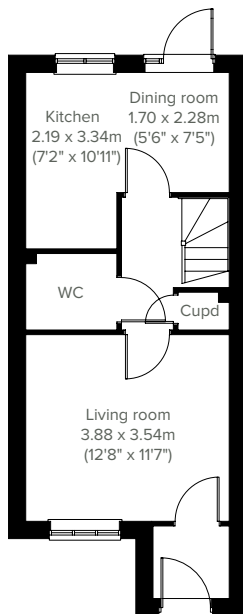


The Saunton

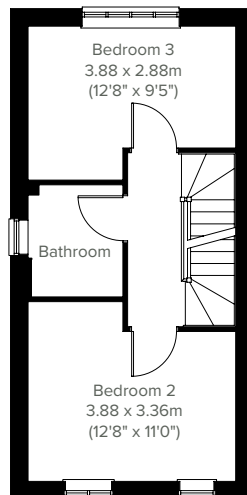
3 bedroom home



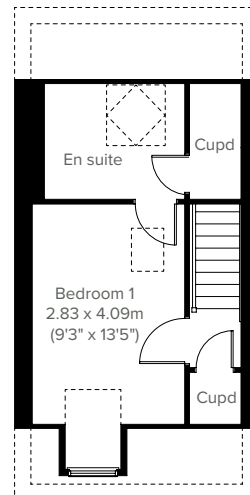
An attractive three-storey, three-bedroom home, the Saunton has a modern open plan kitchen/dining room, well-proportioned living room and three good-sized bedrooms. The top floor bedroom one also has a spacious en suite. The enclosed porch, downstairs WC, three storage cupboards and off-road parking mean it's practical as well as stylish.



GROUND FLOOR



1ST FLOOR



2ND FLOOR

Please note that elevation treatments and window/door positions may vary from plot to plot. Plot specific information will be confirmed on your reservation check list.

This information is for guidance only and does not form any part of any contract or constitute a warranty. Illustrations are of typical elevations and may vary. Floor plans are not drawn to scale and window positions may vary. Room dimensions are subject to a +/- 50mm (2") tolerance and are based on the maximum dimensions in each room. Please consult your sales advisor on site for specific elevations, room dimensions and external finishes. The PEA ratings are estimated and vary between home types, orientation and developments.

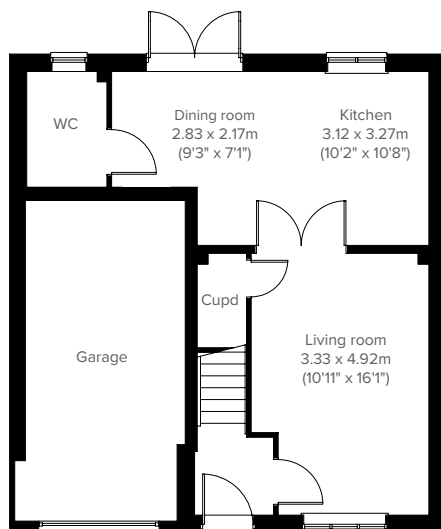


4 bedroom home

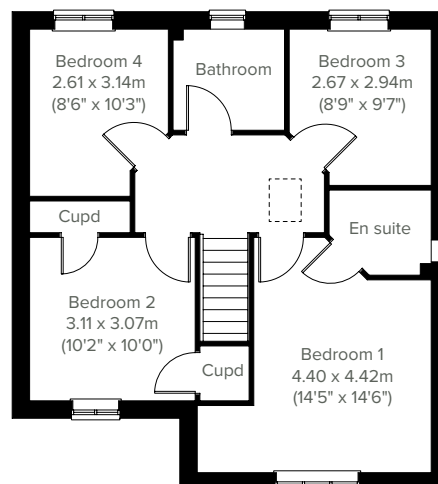
The Burnham



The Burnham is a superb detached home with an integral garage, and a good-sized living room with double doors leading into a bright open plan kitchen/dining room - perfect for family life and entertaining. It's practical too, with a downstairs WC and three storage cupboards. The large bedroom one has an en suite, with the spacious landing leading on to three further bedrooms and the main family bathroom.



GROUND FLOOR



1ST FLOOR

Please note that elevation treatments and window/door positions may vary from plot to plot. Plot specific information will be confirmed on your reservation check list.

This information is for guidance only and does not form any part of any contract or constitute a warranty. Illustrations are of typical elevations and may vary. Floor plans are not drawn to scale and window positions may vary. Room dimensions are subject to a +/- 50mm (2") tolerance and are based on the maximum dimensions in each room. Please consult your sales advisor on site for specific elevations, room dimensions and external finishes. The PEA ratings are estimated and vary between home types, orientation and developments.

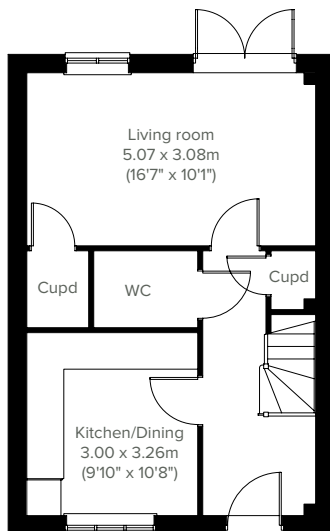


The Whinfall

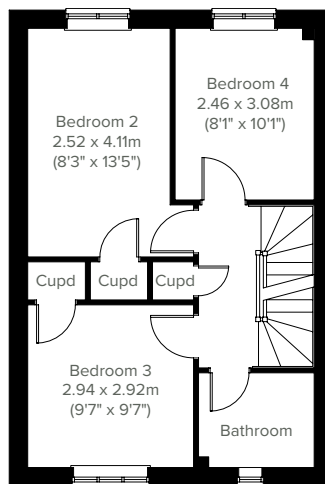
4 bedroom home



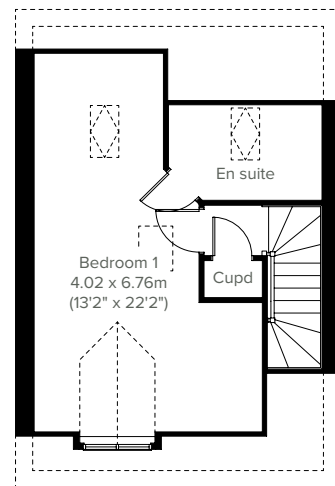
Perfect for the way we live today, the four-bedroom Whinfall has a modern kitchen/dining room and a spacious living room with French doors leading into the garden, making it a home that's ideal for entertaining. The first floor benefits from three nicely-proportioned bedrooms and a family-sized bathroom. The second floor's bedroom one benefits from an en suite and further storage.



GROUND FLOOR



1ST FLOOR



2ND FLOOR

Please note that elevation treatments and window/door positions may vary from plot to plot. Plot specific information will be confirmed on your reservation check list.

This information is for guidance only and does not form any part of any contract or constitute a warranty. Illustrations are of typical elevations and may vary. Floor plans are not drawn to scale and window positions may vary. Room dimensions are subject to a +/- 50mm (2") tolerance and are based on the maximum dimensions in each room. Please consult your sales advisor on site for specific elevations, room dimensions and external finishes. The PEA ratings are estimated and vary between home types, orientation and developments.

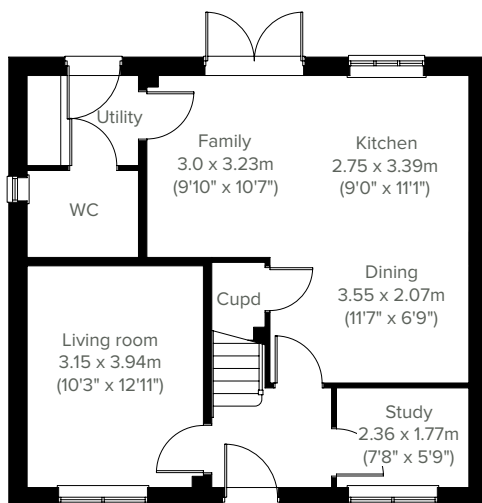


4 bedroom home

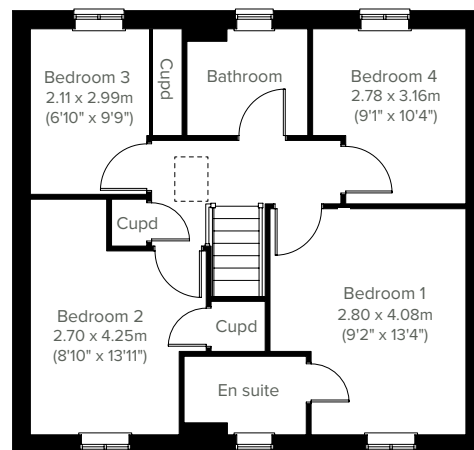
The Brampton



A beautifully-designed four-bedroom detached home with a detached garage, the Brampton has everything you need for modern living. Downstairs there's a front-aspect living room, a spacious kitchen/dining/family room with French doors leading into the rear garden and a separate study. The first floor is home to a generous bedroom one with an en suite plus three storage cupboards and the family bathroom.



GROUND FLOOR



1ST FLOOR

Please note that elevation treatments and window/door positions may vary from plot to plot. Plot specific information will be confirmed on your reservation check list.

This information is for guidance only and does not form any part of any contract or constitute a warranty. Illustrations are of typical elevations and may vary. Floor plans are not drawn to scale and window positions may vary. Room dimensions are subject to a +/- 50mm (2") tolerance and are based on the maximum dimensions in each room. Please consult your sales advisor on site for specific elevations, room dimensions and external finishes. The PEA ratings are estimated and vary between home types, orientation and developments.

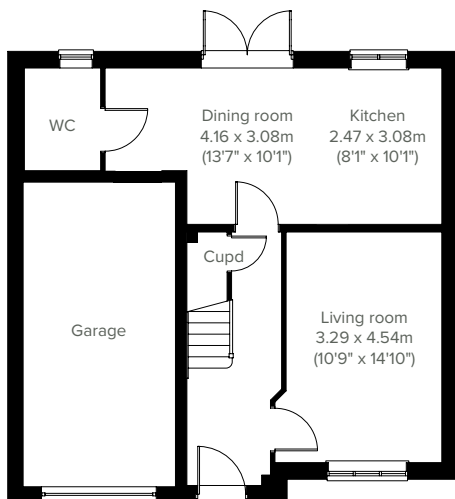


The Marston

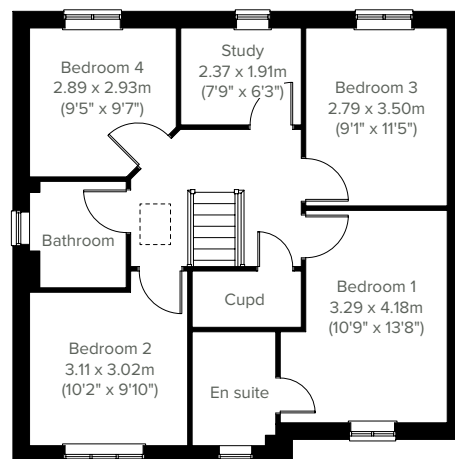
4 bedroom home



A popular family home, the Marston ticks all the boxes. The modern and stylish open plan kitchen/dining room is perfect for spending time as a family and entertaining. There's also a well-proportioned living room, downstairs WC, and an integral garage. Upstairs there are four bedrooms - bedroom one has an en suite - a large family-sized bathroom, a study and further storage.



GROUND FLOOR



1ST FLOOR

Please note that elevation treatments and window/door positions may vary from plot to plot. Plot specific information will be confirmed on your reservation check list.

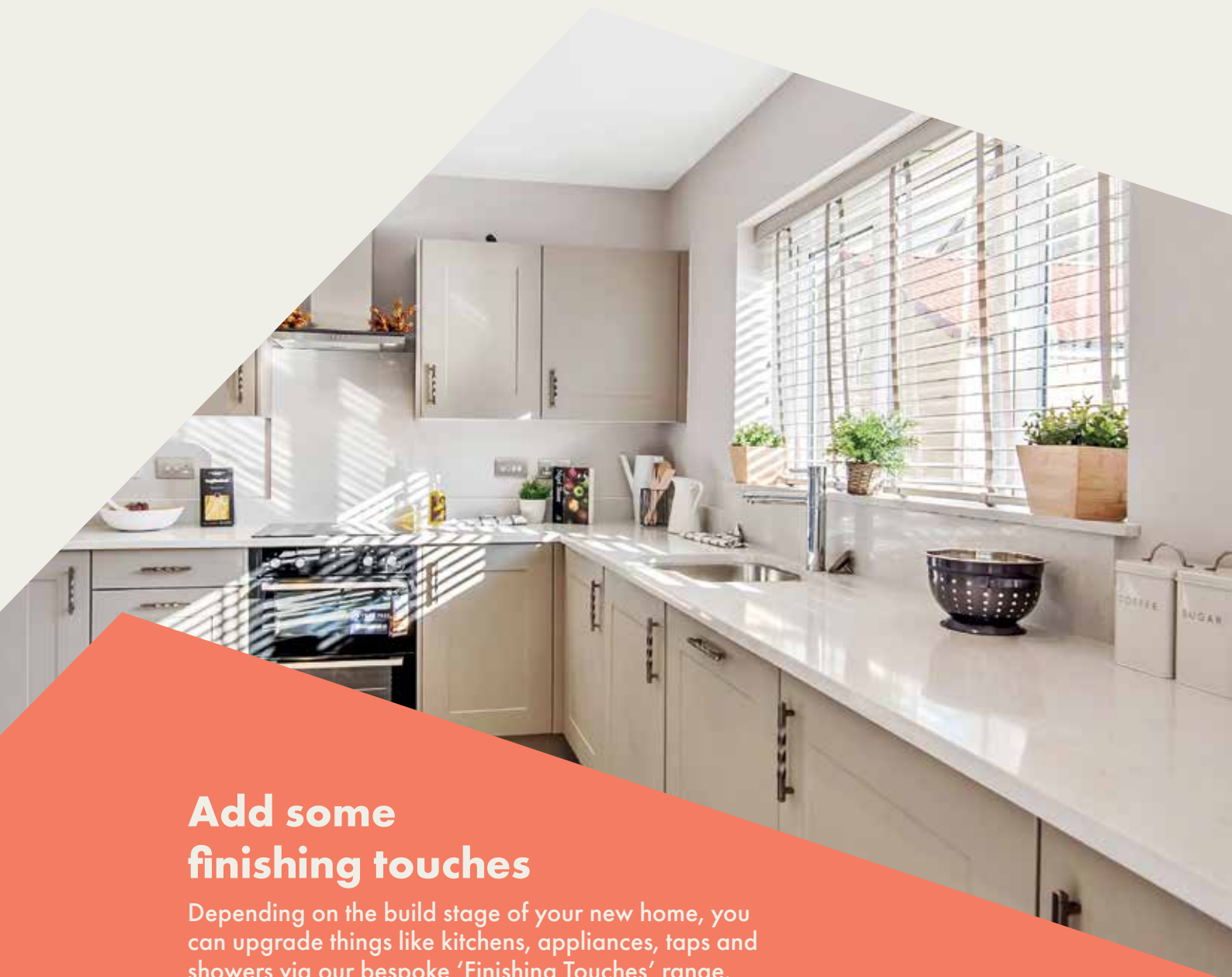
This information is for guidance only and does not form any part of any contract or constitute a warranty. Illustrations are of typical elevations and may vary. Floor plans are not drawn to scale and window positions may vary. Room dimensions are subject to a +/- 50mm (2") tolerance and are based on the maximum dimensions in each room. Please consult your sales advisor on site for specific elevations, room dimensions and external finishes. The PEA ratings are estimated and vary between home types, orientation and developments.



Jubilee Gardens

Specifications

Our homes include these items as standard to ensure you have everything you need to be comfortable from the day you move in. Built for today's modern lifestyles with sustainability in mind.



Add some finishing touches

Depending on the build stage of your new home, you can upgrade things like kitchens, appliances, taps and showers via our bespoke 'Finishing Touches' range.



External

Walls

Traditional cavity walls.
Inner: timber frame or block.
Outer: Style suited to planned architecture.

Roof

Tile or slate-effect with PVCu rainwater goods.

Windows

Double glazed windows in PVCu frames.

Doors

GRP-faced, self-finished in black, PVCu white frame
French doors to garden or balcony
(where applicable).



Internal

Ceilings

Painted white.

Lighting

Pendant or batten fittings with low-energy bulbs.

Stairs

Staircase painted white.

Walls

Painted in white emulsion.

Doors

White pre-finished doors with white hinges.

Heating

Gas fired combi boiler with radiators in all main rooms, with thermostatically-controlled valves to bedrooms.

Insulation

Insulated loft and hatch to meet current building regulations.

Electrics

Individual circuit breakers to consumer unit and double electric sockets to all main rooms.

General

Media plate incorporating TV and telecommunication outlets to living room.



Kitchen

General

Fully-fitted kitchen with a choice of doors and laminate worktop with upstands to match (depending on build stage) with soft closure to all doors and drawers.

Plumbing

Plumbing for washing machine.

Appliances

Single electric stainless steel oven, gas hob in stainless steel and integrated cooker hood.



Bathroom

Suites

White bathroom suites with chrome-finished fittings.

Extractor fan

Extractor fan to bathroom and en suite (where applicable).

Shower

Mira showers with chrome fittings to en suite. Where there is no en suite, a shower/mixer tap fitted to bath.

Tiling

1-course splash-back to WC/basin.

2-course splash-back to bath.

Fully tiled shower in en suites.

General

En suite to bedroom(s) where applicable.



Security

Locks

Three-point locking to front and rear doors, locks to all windows (except escape windows).

Fire

Smoke detectors wired to the mains with battery back-up.



Garage & Gardens

Garage

Garage, car ports or parking space.

Garden

Front lawn turfed or landscaped (where applicable).

Fencing

1.8 metre fence to rear garden, plus gate.





Energy efficiency built in

Sustainability

Our homes are typically 30% more efficient than traditional UK housing, helping you to save money and reduce your impact on the environment.

We're proud that we already build our homes to high levels of energy efficiency, but there's still a way to go. Our in-house sustainability team is dedicated to our mission to have net zero carbon homes in use by 2030, and for our own operations to be net zero carbon by 2040.

To achieve this, we're working to science-based carbon reduction targets in line with the Paris Agreement's 1.5°C warming pledge, investing in low-carbon solutions and technology that will further reduce the carbon footprints of our homes and our impact on the planet.

Energy efficiency built in:

- ✓ **Predicted Energy Assessment rating – B**
Our typical B rating makes our homes much more efficient than traditional D-rated homes.
- ✓ **Up to 400mm roof space insulation**
Warmer in winter, cooler in summer, reducing energy bills.
- ✓ **Argon gas filled double glazing**
Greater insulation and reduced heat loss.
- ✓ **Energy efficient lighting**
We use energy-saving LED lightbulbs in all our homes.
- ✓ **A-rated appliances**
Many of our kitchen appliances have a highly efficient A rating.
- ✓ **A-rated boilers**
Our condenser boilers far outperform non-condensing ones.
- ✓ **Local links**
We're located close to amenities and public transport to help reduce your travel footprint.
- ✓ **Hyperfast broadband**
FibreNest fibre-to-the-home connectivity helps you live and work at home more flexibly.
- ✓ **Lower-carbon bricks**
Our concrete bricks typically use 28% less carbon in manufacture than clay, giving total lifetime carbon savings of 2.4 tonnes of CO₂ per house built.

Eco goodies

When you move in to your new Persimmon home you'll find some of our favourite eco brands in your Homemove box. These products are plastic free, refillable and ethically sourced.





Your home, your way

Finishing Touches to make it yours

Our goal is to make your house feel like your home before
you've even collected the keys.

Key to achieving this is giving you the creative freedom to add your own style and personality to every room through our fabulous Finishing Touches collection.

Featuring the very latest designs from a host of leading brands, Finishing Touches lets you personalise your home inside and out. And rest assured, every upgrade and item available has been carefully chosen to complement the style

and finish of your new home. Of course, the real beauty is that all these extras will be ready for the day you move in.

Thanks to our impressive buying power we can offer almost any upgrade you can imagine at a highly competitive price. It can all be arranged from the comfort and convenience of one of our marketing suites, in a personal design appointment.

You can choose:



Kitchens



Appliances



Bathrooms



Flooring



Wardrobes



Fixtures & fittings

"One of the most exciting things about buying a brand new home is putting your own stamp on a blank canvas."



Share & win!

Share your love for your new Persimmon home and you could be in with a chance of winning a voucher. For more details, see our Instagram page, @persimmon_homes.

#lovemypersimmonhome

The earlier you reserve, the greater the choice

We'll always try and accommodate the Finishing Touches you want, but they are build-stage dependent, so the earlier you reserve the better.

persimmonhomes.com/finishing-touches

Finishing Touches are subject to availability and stage of construction. Prices for your specific home type will be in our price list. For a full list of Finishing Touches available for your home, please contact the sales advisor on site.



All about community

Proud to be building communities

When creating Jubilee Gardens, not only did we create a lovely local environment for you and your family, we also contributed to the wider community.

Throughout the development process, we proactively engage with local communities and work closely with planning authorities. Jubilee Gardens has achieved the right balance of homes and open space and the right mix of house types for a thriving community.

We also include much-needed homes for our Housing Association partners. Our plan enhances local facilities too, providing investment in local infrastructure such as transport, education, retail and recreation facilities, as well as initiatives to generate biodiversity.



“We’ve actively enhanced biodiversity at Jubilee Gardens.”

EDUCATION

We're contributing just over £600k towards education.

HOUSING

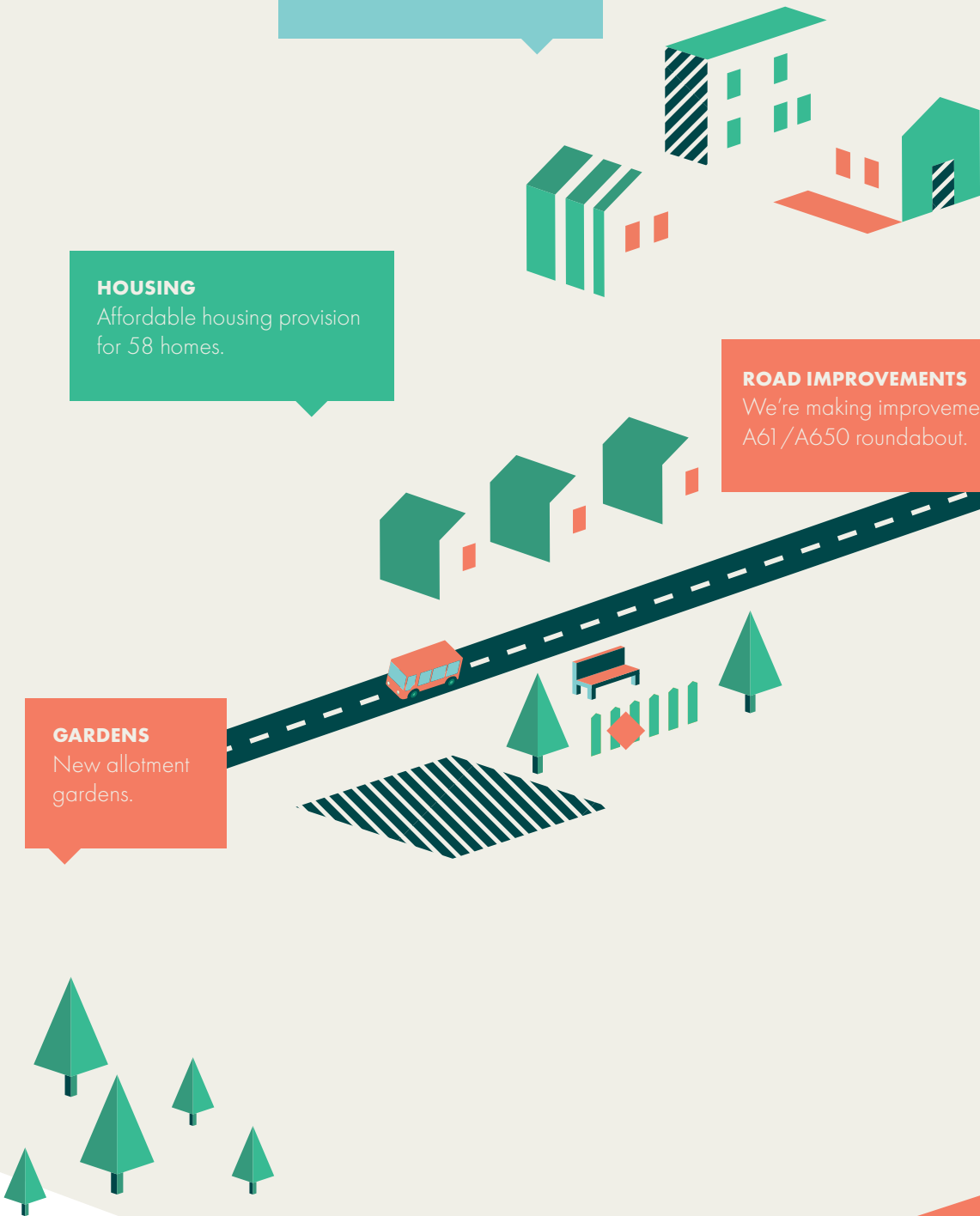
Affordable housing provision for 58 homes.

ROAD IMPROVEMENTS

We're making improvements to the A61 / A650 roundabout.

GARDENS

New allotment gardens.





6 reasons why it pays to buy new

Did you know?

Most of the benefits of buying new are obvious, but some are not. Here's a quick summary of the key reasons why it's such a smart move:

1.

No chain

Few things are more annoying in the home buying process than a time-consuming chain you can't control. Buying new limits the chance of getting involved in one.

2.

Energy efficient

Our homes include cost-effective combi boilers, first-rate loft insulation and draught-free double glazed windows to meet stringent energy-efficient standards, keeping your energy bills as low as possible.

3.

Brand new

Absolutely everything in your new home is brand new. You get all the latest designs and tech, complete with manufacturers' warranties. Win-win.

4.

More ways to buy

We offer a range of schemes to help get you on the property ladder, including Home Change and Part Exchange.

5.

10 year warranty

All our new homes come with a ten-year, insurance-backed warranty, as well as our own two-year Persimmon warranty. In the unlikely event you ever need to claim, our Customer Care Team are there to help you.

6.

Safe & secure

All our homes are built from fire-retardant materials and come with fitted smoke alarms and fire escape windows. They're also far more secure than older buildings thanks to the security locks and lighting we use.

[persimmonhomes.com](https://www.persimmonhomes.com)



Your home, better connected
for a brighter future

Hyperfast 900Mb broadband is available on this development.

FibreNest provides you with high-speed, totally unlimited
full-fibre broadband to your home, at great prices.



Choose the best package for you

We know every household is different, that's why we've put together six amazing
packages to suit everyone's needs. From surfing the net on the sofa to binge-
watching the latest box set, streaming music with friends to ruling the galaxy in
the latest must-have game - we've got the service for you.



Scan me!
For packages & pricing.



0333 234 2220



support@fibrenew.com

Information correct at June 2025. Please see www.fibrenew.com for the latest information and prices.

Get connected today!

To sign up you will need your Unique Customer Reference.
Please ask your sales advisor for this:

C:

D:

P:



Jubilee Gardens

Prince Albert Road
Wakefield
West Yorkshire
WF1 2FW

T: 01924 665 855
E: jubileegardens.wyor@persimmonhomes.com
persimmonhomes.com/jubilee-gardens

Head Office

Persimmon Homes West Yorkshire
Unit 9 Temple Point
Finch Drive
Leeds
LS15 9JQ

T: 0113 240 9726
E: wyor.sales@persimmonhomes.com
persimmonhomes.com



Issue: November 2025 Ref: 130-683

Persimmon plc, Registered office: Persimmon House, Fulford, York YO19 4FE Registered in England no: 1818486

Jubilee Gardens is a marketing name only. The copyright in this document and design is confidential to and the property of Persimmon Homes Developments 2025. These details are intended to give a general idea of the type of home but they do not form part of any specification or contract. The dimensions are approximate and may vary depending on internal finish. By the time you read this some of the details may have changed because of the Persimmon Homes policy of continually updating and improving design features. Therefore, please be sure to check the plan and specification in the sales office to keep you up-to-date with the latest improvements. The vendors of this property give notice that: (i) the particulars are produced in good faith, are set out as a general guide only and do not constitute any part of a contract; (ii) no person in the employment of Persimmon Homes or their authorised agents has any authority to make or give any representation or warranty whatever in relation to this property. Persimmon Homes is compliant with the New Homes Quality Code. Please ask your sales advisor if you have any further questions.