

The Oakley

2 Bedroom Mid Mews

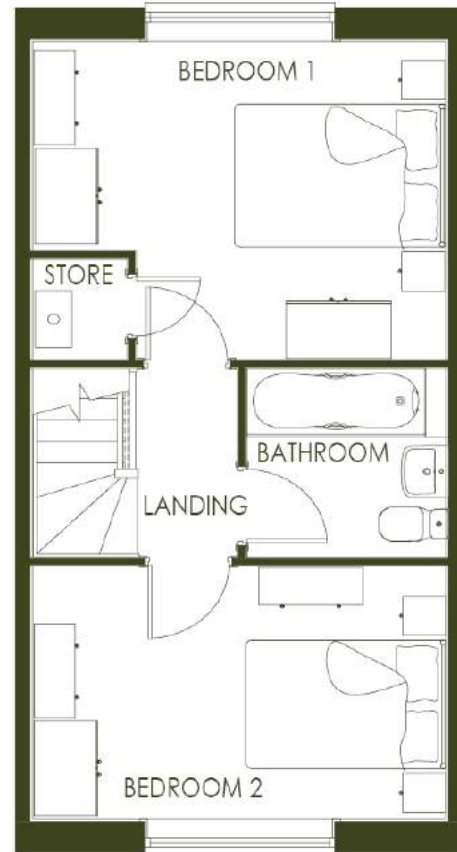
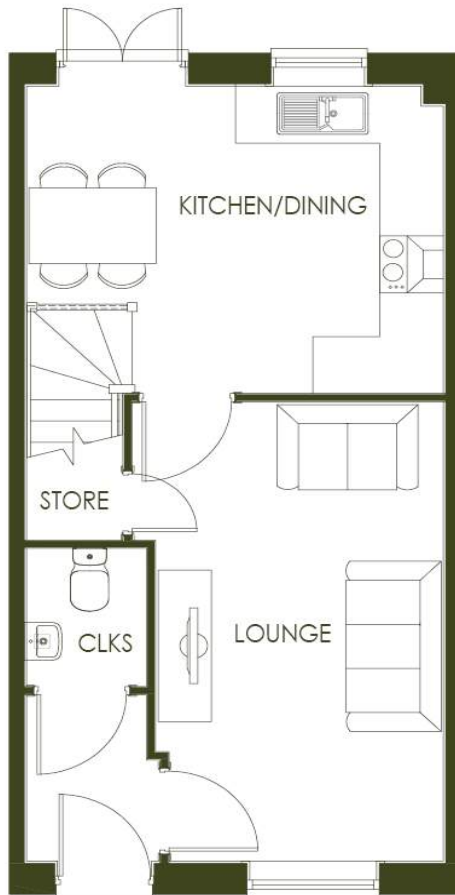


A Delightful Two Bedroom Property Ideal for First-Time Buyers and Downsizees

This delightful 2-bedroom home is ideal for first-time buyers. Two spacious bedrooms are located on the first floor alongside a sleek family bathroom with high quality sanitary ware from a renowned European designer.

The Oakley

2 Bedroom Mid Mews



Ground Floor

Kitchen / Dining

3.93m x 3.24m / 12'11" x 10'8"

Lounge

4.84m x 2.71m / 15'11" x 8'11"

Cloaks

1.45m x 1.13m / 4'9" x 3'8"

First Floor

Bedroom 1

3.93m x 3.34m / 12'11" x 10'11"

Bedroom 2

3.93m x 2.66m / 12'11" x 8'9"

Bathroom

1.99m x 1.89m / 6'6" x 6'2"

Please note the images shown are for illustrative purposes only, and no information contained within this document will form any part of a contract. All measurements given are approximate and maximum. The building materials (brickwork, render and roof tiles) used for each individual plot may differ in colour and arrangement from these images. Homes may be 'handed' (mirror image) versions of those shown, and properties may be constructed as detached, semi-detached or terraced properties. The detailed plans and specification of each property are available at our Sales Office during opening hours, and prospective purchasers must check the details of their particular plot prior to making a reservation



The Highfield

3 Bedroom Semi-Detached

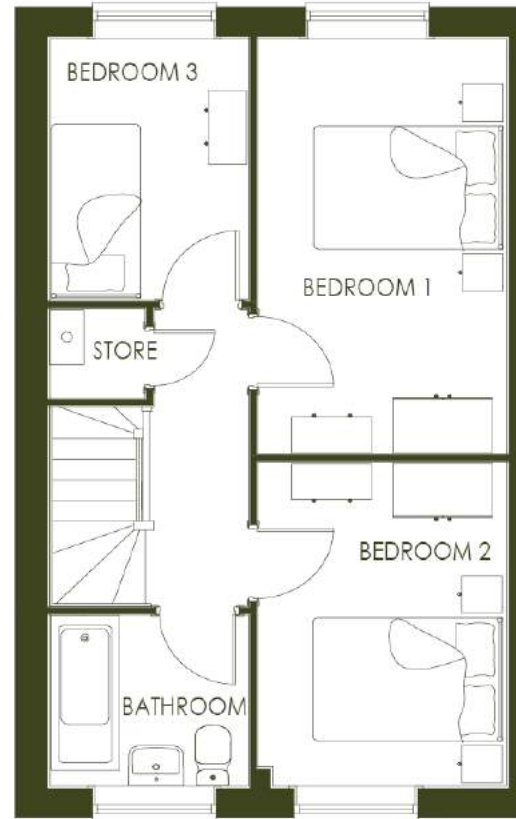
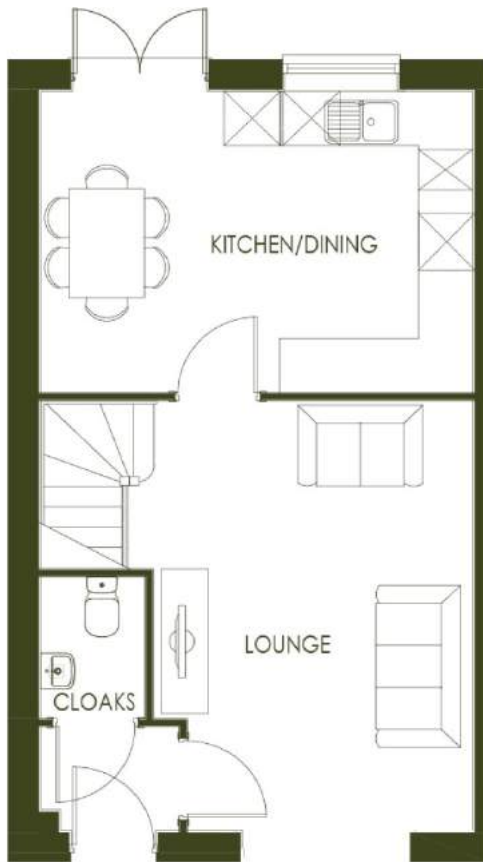


A Modern Three Bedroom Home Ideal for First-Time Buyers and Downsizers

These delightful homes are ideal for first time buyers or downsizers, a light and airy lounge leads through to an open plan kitchen & dining room with French doors opening out onto the garden at the rear, truly bringing the outside in. Spacious bedrooms are located on the first floor alongside a sleek family bathroom with high quality sanitary ware from a renowned European designer.

The Highfield

3 Bedroom Semi-Detached



Ground Floor

Kitchen / Dining

4.58m x 3.33m / 15'0" x 10'11"

Lounge

4.75m x 3.39m / 15'7" x 11'1"

Cloaks

1.57m x 1.10m / 5'2" x 3'7"

First Floor

Bedroom 1

4.54m x 2.50m / 14'11" x 8'2"

Bedroom 2

3.54m x 2.50m / 11'7" x 8'2"

Bedroom 3

2.86m x 2.00m / 9'5" x 6'7"

Bathroom

2.00m x 1.87m / 6'7" x 6'2"

Please note the images shown are for illustrative purposes only, and no information contained within this document will form any part of a contract. All measurements given are approximate and maximum. The building materials (brickwork, render and roof tiles) used for each individual plot may differ in colour and arrangement from these images. Homes may be 'handed' (mirror image) versions of those shown, and properties may be constructed as detached, semi-detached or terraced properties. The detailed plans and specification of each property are available at our Sales Office during opening hours, and prospective purchasers must check the details of their particular plot prior to making a reservation

**CONSUMER
CODE FOR
HOME BUILDERS**

www.consumercode.co.uk

The Marlow

3 Bedroom Semi-Detached



A Beautifully Designed Three Bedroom Semi-Detached Home

These delightful homes are ideal for first time buyers or downsizers, a light and airy lounge leads through to an open plan kitchen & dining room with French doors opening out onto the garden at the rear, truly bringing the outside in. Spacious bedrooms are located on the first floor alongside a sleek family bathroom with high quality sanitary ware from a renowned European designer.

The Marlow

3 Bedroom Semi-Detached



Ground Floor

Kitchen

3.46m x 2.60m / 11'4" x 8'6"

Dining

3.46m x 2.93m / 11'4" x 9'7"

Lounge

5.04m x 3.37m / 16'6" x 11'1"

Cloaks

1.76m x 0.94m / 5'9" x 3'1"



First Floor

Bedroom 1

3.96m x 3.41m / 13'0" x 11'2"

Bedroom 2

3.25m x 3.13m / 10'8" x 10'3"

Bedroom 3

2.83m x 2.33m / 9'3" x 7'8"

Bathroom

2.06m x 1.74m / 6'9" x 5'9"

En Suite

2.24m x 1.23m / 7'4" x 4'0"

Please note the images shown are for illustrative purposes only, and no information contained within this document will form any part of a contract. All measurements given are approximate and maximum. The building materials (brickwork, render and roof tiles) used for each individual plot may differ in colour and arrangement from these images. Homes may be 'handed' (mirror image) versions of those shown, and properties may be constructed as detached, semi-detached or terraced properties. The detailed plans and specification of each property are available at our Sales Office during opening hours, and prospective purchasers must check the details of their particular plot prior to making a reservation

**CONSUMER
CODE FOR
HOME BUILDERS**

www.consumercode.co.uk

The Oxford

3 Bedroom Detached

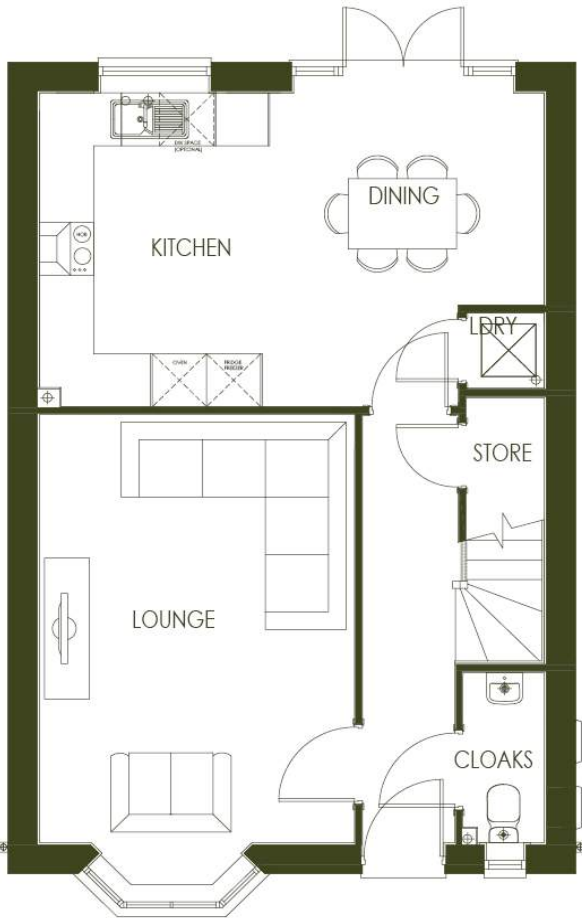


A Beautifully Designed Three Bedroom Home

Beautiful by design, this three-bedroom detached home makes great use of space, especially with its practical open plan kitchen/dining area. A family bathroom and three generously sized bedrooms — which includes a master bedroom with en-suite — can be found on the first floor. Finally, the cloakroom and storage cupboard are desirable features fit for modern family life.

The Oxford

3 Bedroom Detached



Ground Floor

Kitchen

3.60m x 2.58m / 11'10" x 8'6"

Dining

3.06m x 2.58m / 10'0" x 8'6"

Lounge

4.90m x 3.53m / 16'1" x 11'7"

Cloaks

1.76m x 0.94m / 5'9" x 3'1"

First Floor

Bedroom 1

3.37m x 3.33m / 11'1" x 10'11"

Bedroom 2

3.80m x 3.52m / 12'6" x 11'7"

Bedroom 3

3.40m x 2.23m / 11'2" x 7'4"

Bathroom

2.06m x 1.98m / 6'9" x 6'6"

En suite

2.34m x 1.20m / 7'8" x 3'11"

Please note the images shown are for illustrative purposes only, and no information contained within this document will form any part of a contract. All measurements given are approximate and maximum. The building materials (brickwork, render and roof tiles) used for each individual plot may differ in colour and arrangement from these images. Homes may be 'handed' (mirror image) versions of those shown, and properties may be constructed as detached, semi-detached or terraced properties. The detailed plans and specification of each property are available at our Sales Office during opening hours, and prospective purchasers must check the details of their particular plot prior to making a reservation



The Henley

3 Bedroom Detached



A Modern Family Home With a Wealth of Space for Everyone

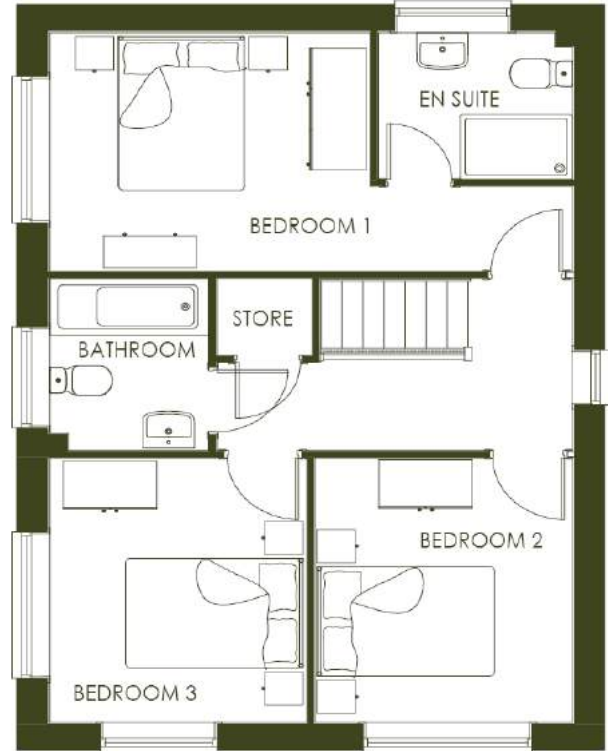
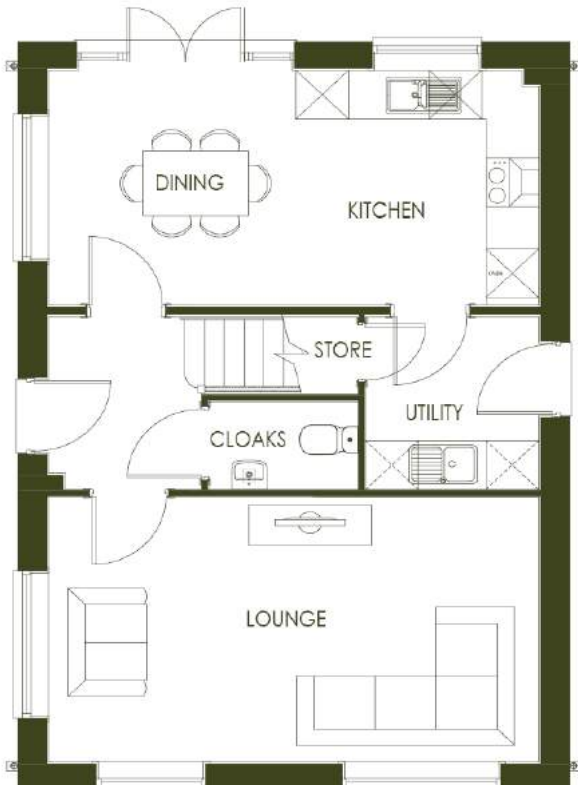
An ideal choice for those looking for open plan living, to the rear of the ground floor is a spacious kitchen & dining room, where French doors look out onto the garden. The separate lounge makes a comfortable area in which to unwind at the end of the day. Upstairs you'll find an exceptional master suite with an en suite shower room, alongside two other beautifully designed bedrooms and a family bathroom.



Castle ||| Green

The Henley

3 Bedroom Detached



Ground Floor

Kitchen

2.89m x 2.77m / 9'6" x 9'1"

Dining

2.82m x 2.89m / 9'3" x 9'6"

Lounge

5.59m x 3.27m / 18'4" x 10'9"

Utility

2.13m x 1.98m / 7'0" x 6'6"

Cloaks

1.70m x 1.08m / 5'7" x 3'7"

First Floor

Bedroom 1

3.43m x 2.95m / 11'3" x 9'8"

Bedroom 2

3.27m x 2.78m / 10'9" x 9'1"

Bedroom 3

3.27m x 2.75m / 10'9" x 9'0"

Bathroom

2.13m x 1.70m / 7'0" x 5'7"

En suite

2.07m x 1.81m / 6'9" x 5'11"

Please note the images shown are for illustrative purposes only, and no information contained within this document will form any part of a contract. All measurements given are approximate and maximum. The building materials (brickwork, render and roof tiles) used for each individual plot may differ in colour and arrangement from these images. Homes may be 'handed' (mirror image) versions of those shown, and properties may be constructed as detached, semi-detached or terraced properties. The detailed plans and specification of each property are available at our Sales Office during opening hours, and prospective purchasers must check the details of their particular plot prior to making a reservation

**CONSUMER
CODE
FOR
HOME BUILDERS**

www.consumercode.co.uk

The Stratford

3 Bedroom Detached

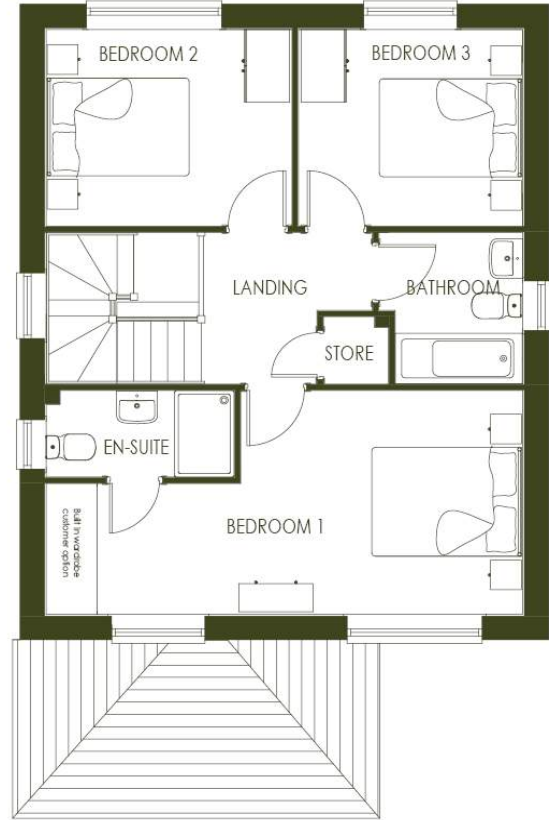
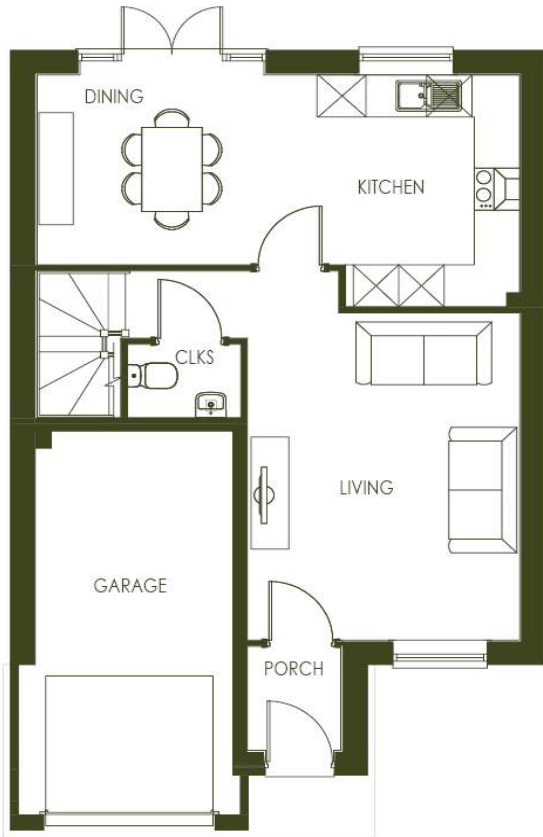


Designed For Modern Family Living, This Three-Bedroom Home Has It All

A charming canopy porch welcomes you into this spacious three bedroom home. At the heart of the Stratford is an airy yet practical kitchen/dining area, while the beautiful lounge is the perfect place to relax. The master bedroom boasts an en-suite bathroom and built in storage, whilst two further spacious bedrooms and a sleek family bathroom complete the first floor.

The Stratford

3 Bedroom Detached



Ground Floor

Kitchen

3.31m x 2.68m / 10'10" x 8'10"

Dining

3.70m x 2.71m / 12'2" x 8'11"

Living

4.67m x 3.59m / 15'4" x 11'9"

Cloaks

1.50m x 1.05m / 4'11" x 3'5"

Garage

5.48m x 2.61m / 18'0" x 8'7"

First Floor

Bedroom 1

6.38m x 3.09m / 20'11" x 10'2"

Bedroom 2

3.29m x 2.71m / 10'10" x 8'11"

Bedroom 3

3.00m x 2.71m / 9'10" x 8'11"

Bathroom

2.09m x 1.70m / 6'10" x 5'7"

En suite

2.52m x 1.19m / 8'3" x 3'11"

Please note the images shown are for illustrative purposes only, and no information contained within this document will form any part of a contract. All measurements given are approximate and maximum. The building materials (brickwork, render and roof tiles) used for each individual plot may differ in colour and arrangement from these images. Homes may be 'handed' (mirror image) versions of those shown, and properties may be constructed as detached, semi-detached or terraced properties. The detailed plans and specification of each property are available at our Sales Office during opening hours, and prospective purchasers must check the details of their particular plot prior to making a reservation

**CONSUMER
CODE FOR
HOME BUILDERS**
www.consumercode.co.uk

The Beaumont

3 Bedroom Detached

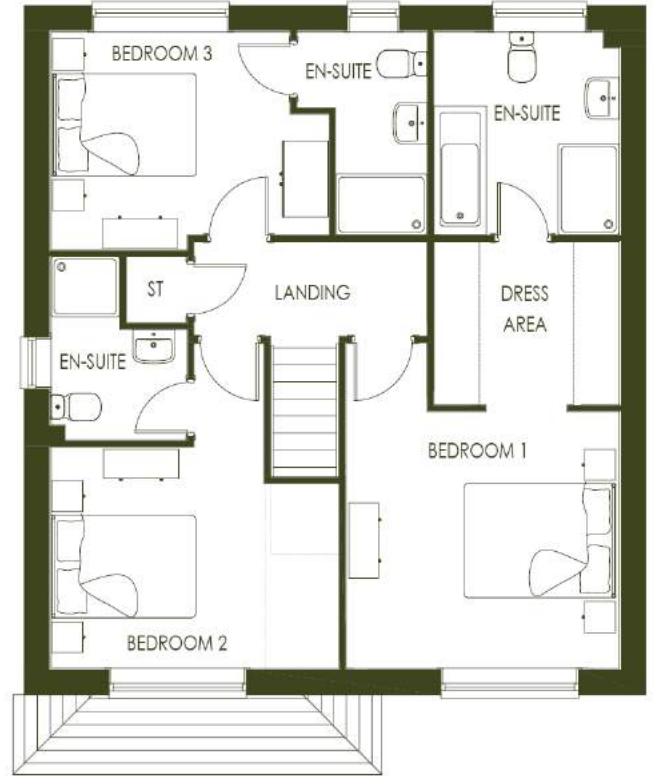
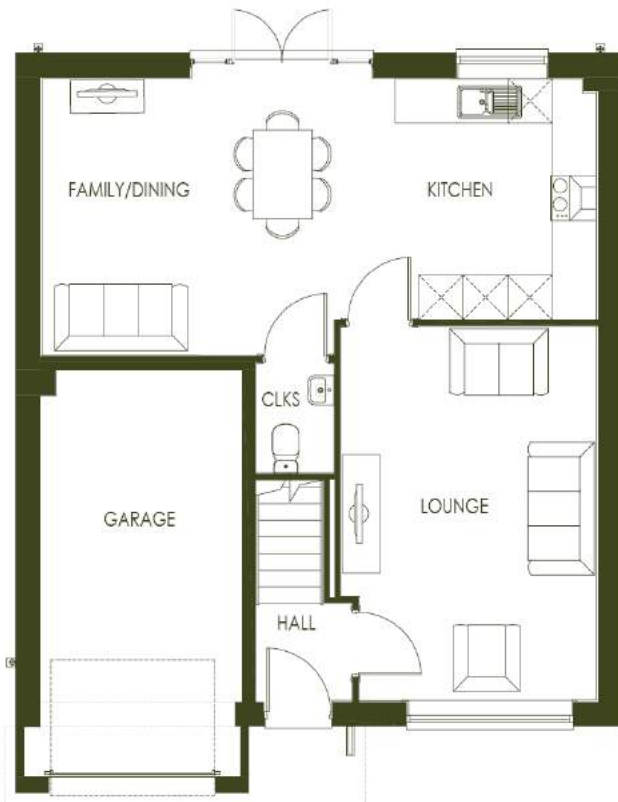


A Contemporary Three-Bedroom Home For Modern Family Living

With its striking design, integral garage and elegant porch, The Beaumont is a contemporary home of true distinction. Made for modern lifestyles, The Beaumont features a spacious, light and airy kitchen/dining area with French doors leading to the garden, while the beautiful separate lounge is the perfect place to relax. On the first floor, the master bedroom boasts an en suite bathroom and dress area, with two further bedrooms with en suites to complete this ideal family home.

The Beaumont

3 Bedroom Detached



Ground Floor

Kitchen

3.26m x 2.72m / 10'8" x 8'11"

Family/Dining

4.78m x 3.74m / 15'8" x 12'3"

Lounge

5.06m x 3.46m / 16'7" x 11'4"

Cloaks

1.50m x 1.06m / 4'11" x 3'6"

Garage

5.50m x 2.74m / 18'1" x 9'0"

First Floor

Bedroom 1

3.59m x 3.39m / 11'9" x 11'1"

Bedroom 2

3.81m x 2.93m / 12'6" x 9'7"

Bedroom 3

3.68m x 2.68m / 12'1" x 8'10"

En-Suite 1

2.68m x 2.45m / 8'10" x 8'0"

En-Suite 2

1.80m x 1.46m / 5'11" x 4'9"

En-Suite 3

2.68m x 1.72m / 8'10" x 5'8"

Dress Area

2.67m x 2.16m / 8'9" x 7'1"

Please note the images shown are for illustrative purposes only, and no information contained within this document will form any part of a contract. All measurements given are approximate and maximum. The building materials (brickwork, render and roof tiles) used for each individual plot may differ in colour and arrangement from these images. Homes may be 'handed' (mirror image) versions of those shown, and properties may be constructed as detached, semi-detached or terraced properties. The detailed plans and specification of each property are available at our Sales Office during opening hours, and prospective purchasers must check the details of their particular plot prior to making a reservation

**CONSUMER
CODE
FOR
HOME BUILDERS**

www.consumercode.co.uk

The Burlington

4 Bedroom Detached

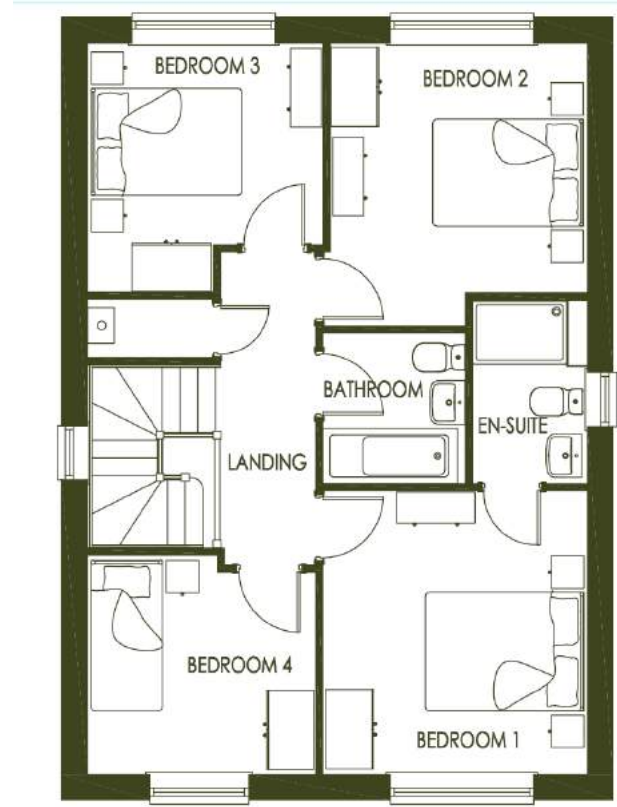
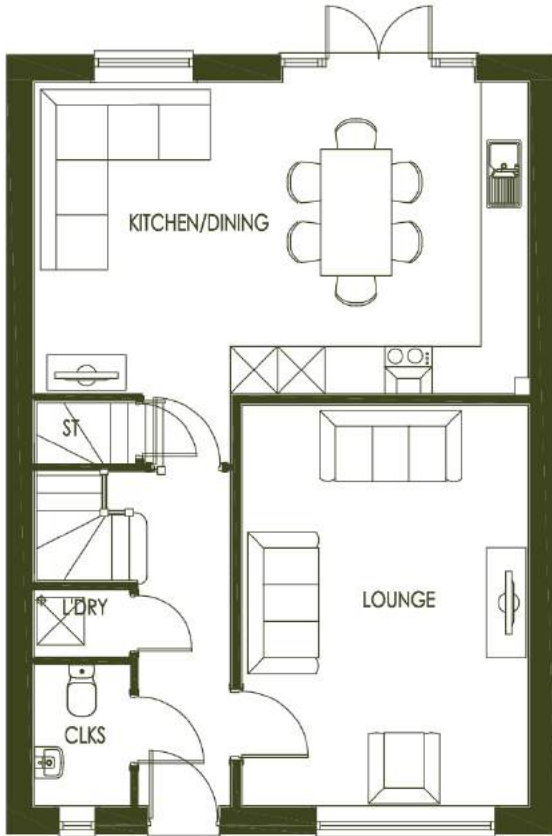


A Modern Four Bedroom Home Perfect for Family Living

This lovely four bedroom detached home presents the perfect space for family living with its open plan kitchen/dining area and spacious lounge. Upstairs you'll find a stunning master suite offering a glorious en-suite shower room, whilst three additional bedrooms and a family bathroom complete this beautiful home.

The Burlington

4 Bedroom Detached



Ground Floor

Kitchen / Dining

6.27m x 3.95m / 20'7" x 13'0"

Lounge

5.08m x 3.63m / 16'8" x 11'11"

Cloaks

1.80m x 1.22m / 5'11" x 4'0"

First Floor

Bedroom 1

3.56m x 3.32m / 11'8" x 10'11"

Bedroom 2

3.55m x 3.23m / 11'8" x 10'7"

Bedroom 3

3.11m x 2.95m / 10'2" x 9'8"

Bedroom 4

2.86m x 2.74m / 9'5" x 9'0"

Bathroom

1.90m x 1.80m / 6'3" x 5'11"

En Suite

1.77m x 2.31m / 5'10" x 7'7"

Please note the images shown are for illustrative purposes only, and no information contained within this document will form any part of a contract. All measurements given are approximate and maximum. The building materials (brickwork, render and roof tiles) used for each individual plot may differ in colour and arrangement from these images. Homes may be 'handed' (mirror image) versions of those shown, and properties may be constructed as detached, semi-detached or terraced properties. The detailed plans and specification of each property are available at our Sales Office during opening hours, and prospective purchasers must check the details of their particular plot prior to making a reservation

**CONSUMER
CODE FOR
HOME BUILDERS**
www.consumercode.co.uk

The Heatherington

4 Bedroom Detached

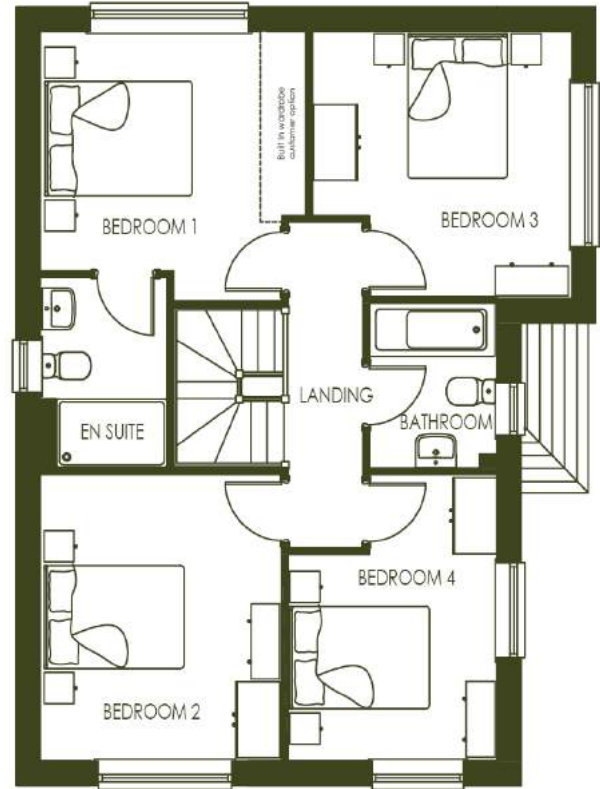
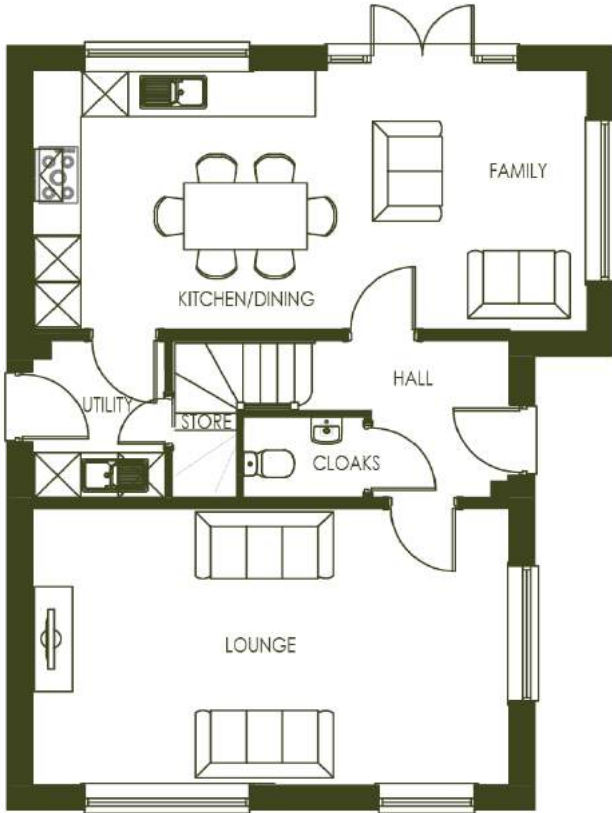


Space For Everyone In This Stylish Four Bedroom Home

A spacious hallway welcomes you to this stylish new home, on the left you will find a living room running the whole length of the house offering plenty of space and light. On the right you will find a spacious kitchen, dining and family area with French doors onto the garden, making this a perfect space for the whole family to enjoy. A laundry room and cloakroom complete the ground floor. An en suite master bedroom and three further bedrooms are found upstairs along with a family bathroom.

The Heatherington

4 Bedroom Detached



Ground Floor

Kitchen/Dining

3.80m x 3.45m / 12'6" x 11'4"

Family

3.51m x 3.45m / 11'6" x 11'4"

Utility

2.05m x 1.70m / 6'9" x 5'7"

Lounge

6.15m x 3.68m / 20'2" x 12'1"

Cloaks

1.58m x 1.08m / 5'2" x 3'7"

First Floor

Bedroom 1

3.58m x 3.51m / 11'9" x 11'6"

Bedroom 2

3.73m x 3.28m / 12'3" x 10'9"

Bedroom 3

3.49m x 3.45m / 11'5" x 11'4"

Bedroom 4

3.73m x 2.84m / 12'3" x 9'4"

Bathroom

2.15m x 1.70m / 7'1" x 5'7"

En Suite

2.48m x 1.70m / 8'2" x 5'7"

Please note the images shown are for illustrative purposes only, and no information contained within this document will form any part of a contract. All measurements given are approximate and maximum. The building materials (brickwork, render and roof tiles) used for each individual plot may differ in colour and arrangement from these images. Homes may be 'handed' (mirror image) versions of those shown, and properties may be constructed as detached, semi-detached or terraced properties. The detailed plans and specification of each property are available at our Sales Office during opening hours, and prospective purchasers must check the details of their particular plot prior to making a reservation

**CONSUMER
CODE
FOR
HOME BUILDERS**

www.consumercode.co.uk

The Wentworth

4 Bedroom Detached

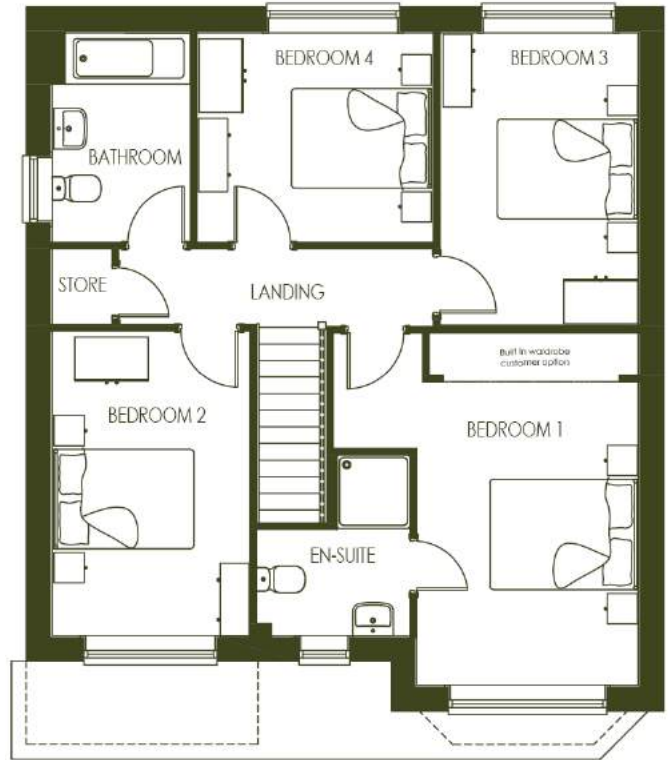
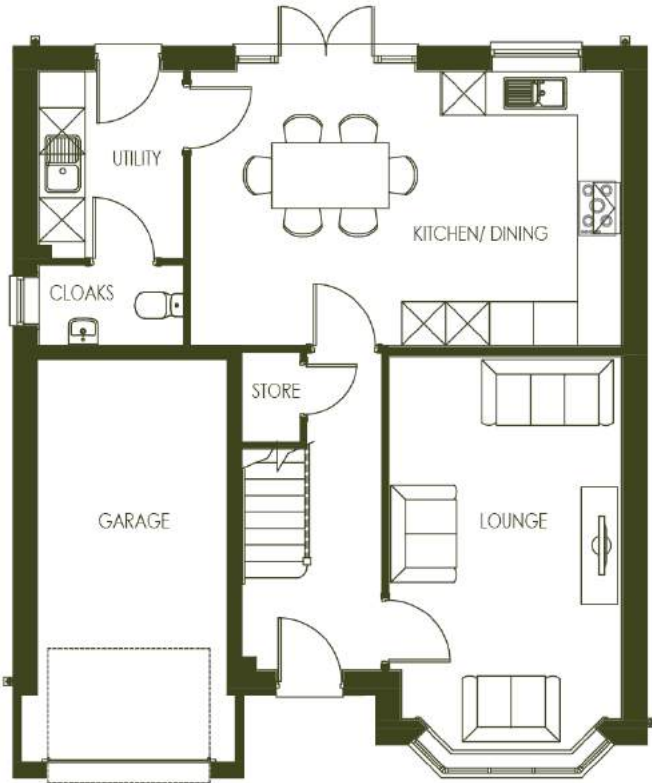


A Delightful Four-Bedroom Home, Made For Contemporary Living

The Wentworth fuses elegant design with contemporary features to create a comfortable home of distinction. The welcoming hallway leads to the spacious living area, while the open-plan kitchen/dining area forms the beating heart of this beautiful house. The en suite master bedroom is one of four first-floor bedrooms offering plenty of space. Finally, the cloakroom and an integrated garage are desirable features fit for modern family life.

The Wentworth

4 Bedroom Detached



Ground Floor

Kitchen/Dining

5.89m x 3.74m / 19'4" x 12'3"

Utility

2.56m x 1.98m / 8'5" x 6'6"

Cloaks

1.98m x 1.10m / 6'6" x 3'7"

Lounge

5.38m x 3.18m / 17'8" x 10'5"

Garage

5.50m x 2.60m / 18'1" x 8'6"

First Floor

Bedroom 1

4.78m x 3.00m / 15'8" x 9'10"

Bedroom 2

4.13m x 2.68m / 13'7" x 8'10"

Bedroom 3

3.97m x 2.96m / 13'0" x 9'9"

Bedroom 4

3.21m x 2.85m / 10'6" x 9'4"

Bathroom

2.85m x 1.88m / 9'4" x 6'2"

En Suite

2.45m X 2.09m / 8'0" x 6'10"

Please note the images shown are for illustrative purposes only, and no information contained within this document will form any part of a contract. All measurements given are approximate and maximum. The building materials (brickwork, render and roof tiles) used for each individual plot may differ in colour and arrangement from these images. Homes may be 'handed' (mirror image) versions of those shown, and properties may be constructed as detached, semi-detached or terraced properties. The detailed plans and specification of each property are available at our Sales Office during opening hours, and prospective purchasers must check the details of their particular plot prior to making a reservation

**CONSUMER
CODE FOR
HOME BUILDERS**
www.consumercode.co.uk

The Alderton

4 Bedroom Detached

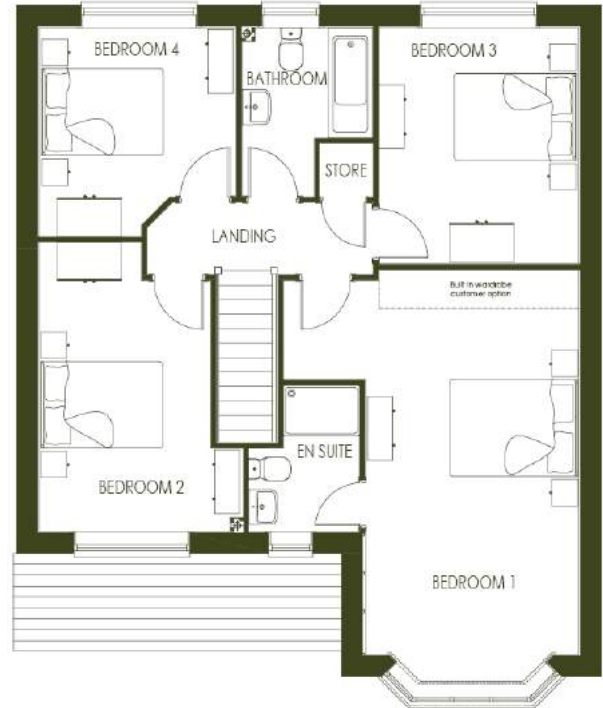
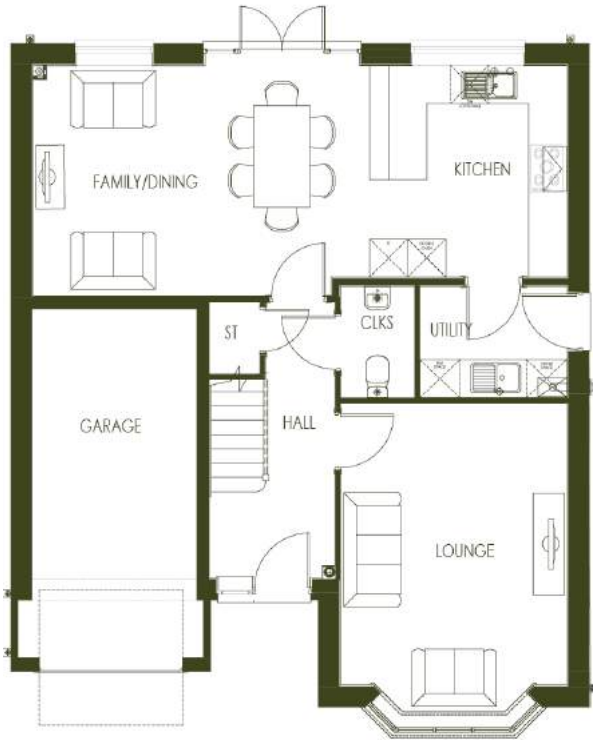


A Delightful Four Bedroom Home, Made for Contemporary Living

The Alderton fuses elegant design with contemporary features to create a comfortable home of distinction. The welcoming hallway leads to the spacious living area, while the open-plan kitchen/dining area forms the beating heart of this beautiful house. The en suite master bedroom is one of four first-floor bedrooms offering plenty of space. Finally, the cloakroom, utility area and an integrated garage are desirable features fit for modern family life.

The Alderton

4 Bedroom Detached



Ground Floor

Kitchen / Dining

3.63m x 5.39m / 11'11" x 17'8"

Family

3.02m x 3.04m / 9'11" x 10'0"

Utility

1.77m x 2.27m / 5'10" x 7'5"

Lounge

5.16m x 3.34m / 16'11" x 10'11"

Cloaks

1.74m x 0.96m / 5'9" x 3'2"

Garage

5.50m x 2.60m / 18'1" x 8'6"

First Floor

Bedroom 1

4.64m x 6.45m / 15'3" x 21'2"

Bathroom

2.67m x 2.07m / 8'9" x 6'9"

Bedroom 2

4.54m x 3.21m / 14'11" x 10'6"

En Suite 1

1.77m x 2.31m / 5'10" x 7'7"

Bedroom 3

3.15m x 3.72m / 10'4" x 12'2"

Bedroom 4

3.29m x 3.11m / 10'10" x 10'2"

Please note the images shown are for illustrative purposes only, and no information contained within this document will form any part of a contract. All measurements given are approximate and maximum. The building materials (brickwork, render and roof tiles) used for each individual plot may differ in colour and arrangement from these images. Homes may be 'handed' (mirror image) versions of those shown, and properties may be constructed as detached, semi-detached or terraced properties. The detailed plans and specification of each property are available at our Sales Office during opening hours, and prospective purchasers must check the details of their particular plot prior to making a reservation.

CONSUMER
CODE FOR
HOME BUILDERS

www.consumercode.co.uk

The Wiltshire

4 Bedroom Detached

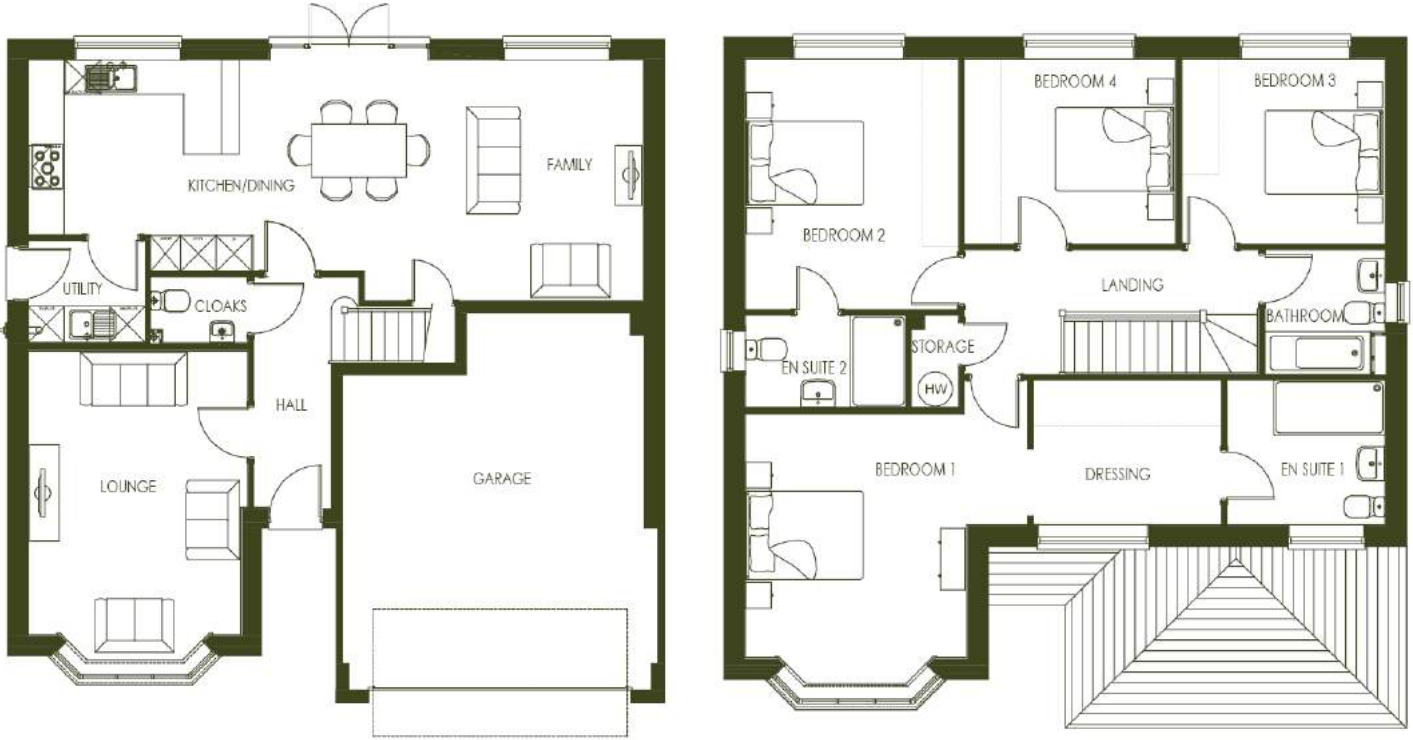


A Rare Blend Of Timeless Classic Design And Contemporary Open-Plan Living

The Wiltshire is a truly magnificent detached family home. Living and entertainment space is plentiful with an impressive open plan kitchen/dining/family area boasting French doors that lead out into the garden, enabling the outside to blend beautifully with the interior. There is a separate lounge with a beautiful bay window to complete the ground floor. Upstairs there is a luxurious and imposing master suite, along with an impressive guest suite and two other generously sized bedrooms and family bathroom. Finally, the cloakroom, utility area and an integrated double garage are desirable features fit for modern family life.

The Wiltshire

4 Bedroom Detached



Ground Floor

Kitchen

7.16m x 3.55m / 23'6" x 11'8"

Lounge

5.21m x 3.69m / 17'1" x 12'1"

Family

4.04m x 3.16m / 13'3" x 10'4"

Utility

1.96m x 1.71m / 6'5" x 5'7"

Cloaks

1.64m x 1.10m / 5'5" x 3'7"

Garage

6.32m x 5.08m / 20'9" x 16'8"

First Floor

Bedroom 1

4.55m x 4.37m / 14'11" x 14'4"

Bedroom 2

4.04m x 3.44m / 13'3" x 11'3"

Bedroom 3

3.27m x 3.00m / 10'9" x 9'10"

Bedroom 4

3.41m x 3.00m / 11'2" x 9'10"

En Suite 1

2.55m x 2.33m / 8'4" x 7'8"

En Suite 2

2.59m x 1.49m / 8'6" x 4'11"

Dressing

3.04m x 2.33m / 10'0" x 7'8"

Bathroom

2.15m x 1.94m / 7'1" x 6'4"

Please note the images shown are for illustrative purposes only, and no information contained within this document will form any part of a contract. All measurements given are approximate and maximum. The building materials (brickwork, render and roof tiles) used for each individual plot may differ in colour and arrangement from these images. Homes may be 'handed' (mirror image) versions of those shown, and properties may be constructed as detached, semi-detached or terraced properties. The detailed plans and specification of each property are available at our Sales Office during opening hours, and prospective purchasers must check the details of their particular plot prior to making a reservation

**CONSUMER
CODE FOR
HOME BUILDERS**

www.consumercode.co.uk