

HEREFORD  
POINT  
HEREFORD

HEREFORD POINT SALES & MARKETING SUITE  
ROMAN ROAD, HOLMER, HEREFORD HR4 9QP  
TEL: 01432 817399

**BLOOR HOMES**



BUILDING  
QUALITY NEW  
HOMES FOR  
FIFTY YEARS

1969

THE YEAR WE  
STARTED MAKING  
DREAM HOMES A REALITY





**At Hereford Point we are not only able to offer you a stunning location, we are also dedicated to building quality new homes that stand the test of time.**

Visit one of our developments built 10 years ago and see how the community has developed along with the landscaping and house type designs. As one of the leading privately-owned house builders in the country, our success is based on strong traditions of quality, value for money and a genuine desire to build homes that give our customers years of pleasure.

The company is still owned by John Bloor who is actively involved within the day to day running of the business to ensure the high quality we pride ourselves on is achieved on all our homes.

Our approach to the design of every new location we produce goes far beyond the provision of superior homes for today's varied lifestyle. We make every effort to conserve the natural balance of each location including the conservation of wildlife and the preservation of natural features.

Care and consideration is also taken to ensure that the environmental impact of every new home we build is kept to a minimum.

Plus, reserve a Bloor home in the early stages of construction and you will have the freedom of choice to select from our range of finishes for your kitchen, bathroom and en suite facilities.

Once reserved, you will be able to take advantage of "Your Choice" which allows you to choose additional fixtures and fittings to personalise your new Bloor home, or upgrade to a higher specification from the standard range used on this development at an extra cost.

We are proud to be building at Hereford Point, bringing quality homes and developing communities.

SAT NAV:



DEVELOPMENT:

Hereford Point

FIND US HERE:

Roman Road, Holmer, Hereford HR4 9QP

**BEAUTIFUL  
SURROUNDINGS  
WAITING TO BE  
DISCOVERED**

**Whether you're searching for your first home or looking to upgrade, our inspiring collection of new 2, 3 & 4 bedroom homes on the rural edge of Hereford are a wonderful choice.**

Following the remarkable success of our first phase at Hereford Point, we're excited to continue building a further collection of homes with a distinctively new style inspired by wonderfully traditional architecture.





Remaining close by to the famous Hereford Racecourse, our new homes at Hereford Point continue to enjoy the very best of this countryside location with vast open green spaces and an inviting rural feel. The exciting bustle of Hereford's thriving city centre is only approximately 4 miles from home. Here you can discover various retail opportunities with plentiful high street names including Next and Outfit, neighbouring some beautiful independent shops.

Soaking up local culture is effortless in Hereford. The beauty of Hereford Cathedral is quite obviously unquestionable and you can also enjoy a day exploring the city Museum and Art Gallery, delving into Hereford's fascinating past. For the older members of your family, you can also learn some interesting pastimes of an important local product at the Hereford Cider Museum.

DISCOVER A  
WEALTH OF  
AMENITIES ON  
YOUR DOORSTEP



◀ 21 MILES

### M50 MOTORWAY

Taking your adventure further afield is effortless by simply hopping on the M50 motorway linking to the M5 network.

[trafficengland.com](http://trafficengland.com)



▼ 6.9 MILES

### CHASE DISTILLERY

Learn the interesting history of a family owned British Field to Bottle distillery.

Hereford HR1 3PG  
[chasedistillery.co.uk](http://chasedistillery.co.uk)



▲ LESS THAN 1 MILE

### HEREFORD RACECOURSE

Host to not only exciting racing events, this venue is also home to the annual Hereford Food Festival.

Hereford HR4 9QU  
[hereford-racecourse.co.uk](http://hereford-racecourse.co.uk)



▲ 6.9 MILES

### OLD MARKET

Spend your weekend enjoying some retail therapy and wonderful food at Hereford's central hub.

Hereford HR9 9RH  
[oldmarkethereford.co.uk](http://oldmarkethereford.co.uk)



All details correct at  
time of production.

Distances and journey  
times calculated using  
[maps.google.com](http://maps.google.com)

► 2 MILES

### HEREFORD RAILWAY STATION

Let someone else do the hard work for you, with easy rail links to Birmingham, Manchester and London.

Hereford HR1 1BB  
[nationalrail.co.uk](http://nationalrail.co.uk)

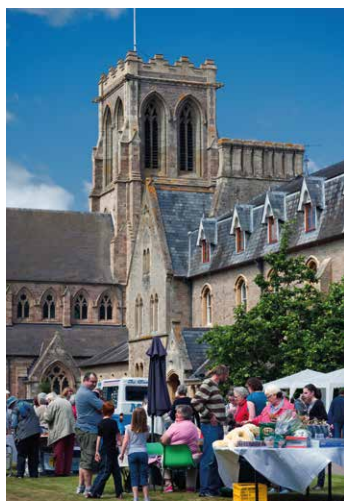


▼ 65 MILES

### BIRMINGHAM AIRPORT

Taking to the skies? Jet off to your favourite international destination from one of the most connected airports in the UK.

Birmingham B26 3QJ  
[birminghamairport.co.uk](http://birminghamairport.co.uk)



◀ 17.3 MILES

### EASTNOR CASTLE

Step inside the 19th-century revival castle with a wide variety of events held throughout the year.

Ledbury HR8 1RL  
[eastnorcastle.com](http://eastnorcastle.com)



◀ 24.2 MILES

### MALVERN HILLS

There's nothing better than a breath of fresh air, particularly at the beacon of these remarkable hills on the borderline of Herefordshire and Worcestershire.

[malvern hills.org.uk/home](http://malvern hills.org.uk/home)



◀ 18 MILES

### WYE VALLEY BUTTERFLY ZOO

Kept at tropical temperatures, this indoor attraction lets you get up close and personal to exotic butterflies.

Ross-on-Wye HR9 6DA  
[butterflyzoo.co.uk](http://butterflyzoo.co.uk)

**A BUSTLING  
TOWN WITH  
SUPERB  
AMENITIES**

**With a bustling city centre, it's no surprise that Hereford has a wide variety of fantastic bars and eateries for you to enjoy.**

With a distinctive appearance, The Old Market on Newmarket Street offers not only complete retail therapy and cinema entertainment, but a haven for food lovers. Here you can find a well loved Hereford gem – locally owned and run 'meat boutique' The Beefy Boys restaurant. Offering superb flavour combinations, 100% Hereford beef and deeply indulgent side dishes, this restaurant is certainly fantastic to have close to home.



The Beefy Boys 01  
Hereford Point 02  
street scene

Distances and journey times calculated using maps.google.com





01



02

Hereford is also home to some renowned chain restaurants, including Nando's, Wagamama and Miller & Carter.

In the centre of Hereford you will find the stunning, grade 1 listed Hereford Cathedral. Used as a place of worship for over 1,300 years, Hereford Cathedral is most famous for the Mappa Mundi a medieval map of the world created around c. 1300. Explore the rich history of the cathedral with a guided tour followed by a coffee stop at the cathedral's café, a perfect day out for all the family.

Venturing further afield you may stumble upon Verzon House, a stunning, proud, white building in the rural Hereford countryside, home to a fantastic locally sourced restaurant and hotel. Not only can you experience some wonderful food here, you can also benefit from public transport to the renowned Chase Distillery and enjoy a superb day out with friends on a tasting tour.

WE'RE HERE,  
LONG AFTER  
WE HAND  
OVER THE KEYS

**Choosing to buy a new Bloor home eliminates many of your worries. With no repairs or renovations to do, you will be able to enjoy spending more quality time with your friends and family.**

We hope you will never need it, but that doesn't mean we don't understand the peace of mind that comes with having an insurance backed 10 year warranty from the NHBC.

As well as our own rigorous checks carried out during the build process, the warranty provider will also carry out their own inspections on your new home, ensuring that it's built to the high quality we pride ourselves on.

Most of us don't regularly buy a new home, so it's no wonder it can seem a little confusing at times. But it's not as scary as you might think, we'll hold your hand through the entire buying process. After all, we've been doing this for fifty years so rest assured, you're in good hands.

We'll work hard to make sure you know exactly what to do and when to do it. That way, you'll have all the information you need to hand. Simply follow our step by step guide and know that we'll be here to answer all your questions. The first step to making your move, is deciding if new is right for you.

And what's more, we'll keep on looking after you and your home long after you've moved in.

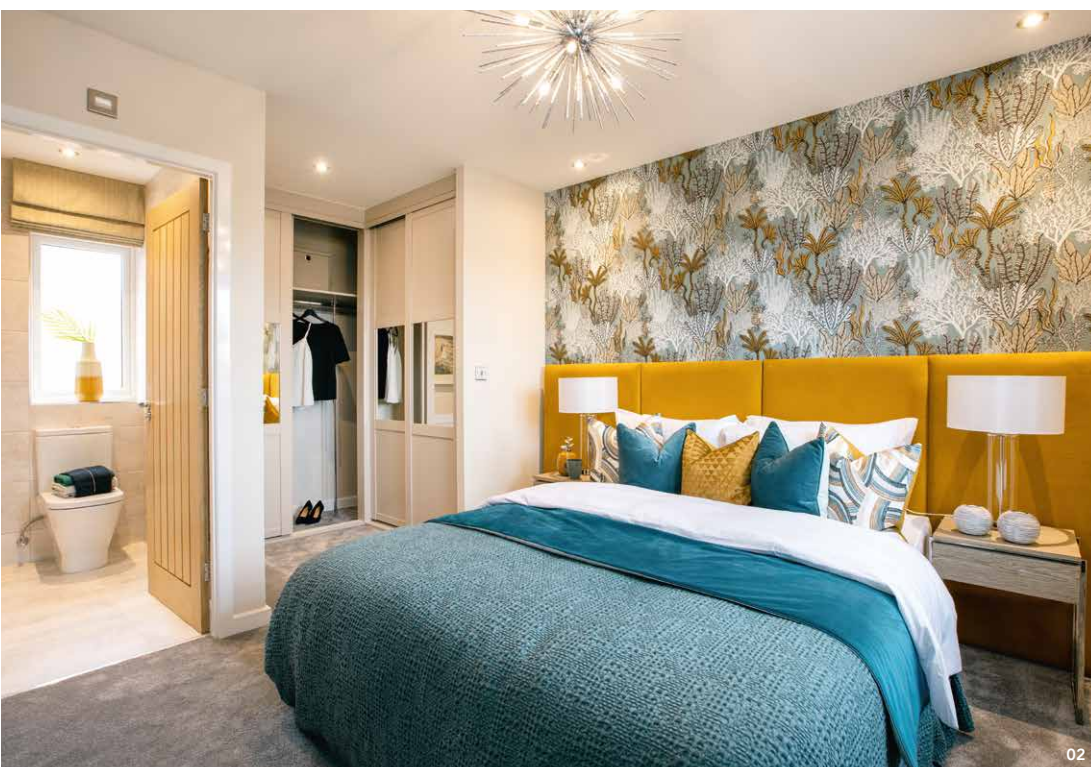
\*Figure based on legal completions between July 2020 and June 2021.

All information shown in this brochure was correct at time of going to press.

Typical interiors 01,02

# 4,075

THE NUMBER OF  
DREAMS WE MADE  
REALITY LAST YEAR\*







**Bloor Homes Western**  
Rudgeway House  
Celandine Road  
Tewkesbury  
Gloucestershire. GL20 7FU

[west@bloorhomes.com](mailto:west@bloorhomes.com)  
[www.bloorhomes.com](http://www.bloorhomes.com)