



**FOXCOTE
CHEADLE**

Creating Better Life Experiences.
One Home at a Time.


Foxcote Sales & Marketing Suite
Wilmslow Road, Cheadle, SK8 3NN
[0161 5166 454](tel:01615166454)





05



07



09

10

CONTENTS

04/05

Welcome Home

06/07

Exceptional Modern Living

08/09

A Wealth Of Education

10/11

Just Around The Corner

12/13

Lower Your Energy Bills

14

You're In Capable Hands

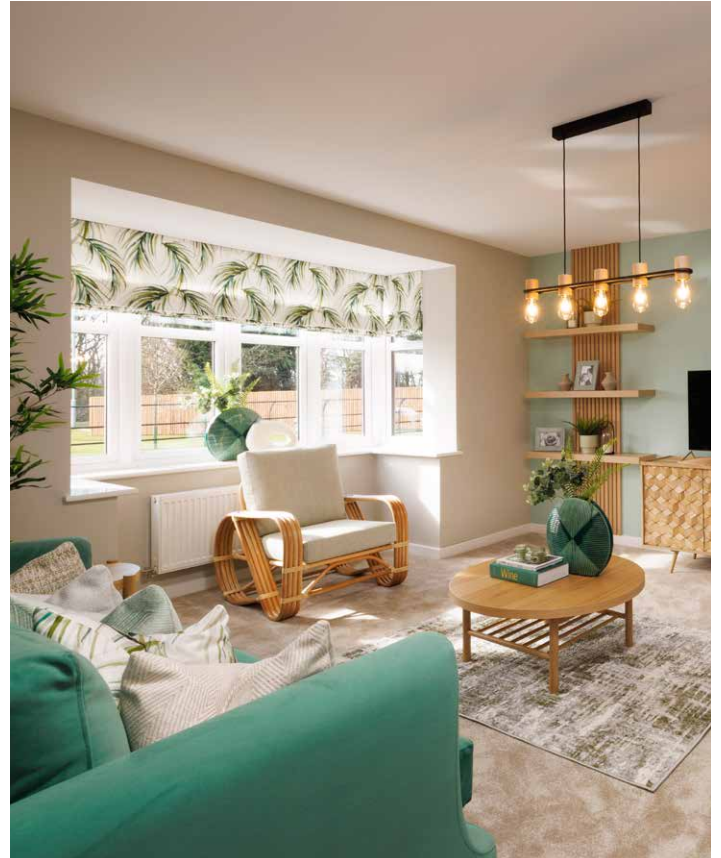
WELCOME HOME

A lot may have changed since the day that John Bloor built the first Bloor home in 1969, but one thing has remained the same. Our dedication to providing beautifully crafted homes in fantastic locations, so you and your family can enjoy life to the fullest.

We're still owned by the Bloor family and today, that same dedication is clearly present throughout our careful consideration of the development layout and each home we've chosen to build here at Foxnote.

We understand that buying a new home is a big commitment so we want your Bloor home here in Cheadle to be ready to accompany you throughout your life – no questions asked. That's why it's important each one of our homes appreciates your need for space and growth.

Plus, when you reserve your new Bloor home in the early stages of construction, you can have the freedom to choose your internal fixtures and fittings for your kitchen, bathroom and en suite facilities. Our comprehensive 'Your Choice' brochure can help with choosing those extra details for your new home, should you wish you upgrade from our chosen specification here at Foxnote.





① → Beamish Place ② → Typical Interior



SAT NAV

Development
Foxcote, Cheadle

Find Us Here
Foxcote, Wilmslow Road
Cheadle, SK8 3NN.

Start your journey to a stunning new Bloor home on the edge of a cultural hot-spot.

EXCEPTIONAL MODERN LIVING

It's hard to ignore the desirability of this location, perfectly situated for easy access to Manchester and Stockport city centres, links to the stunning Peak District and the quaint villages of Cheadle, Wilmslow and Alderley Edge just a couple of miles away.

Your home at Foxcote will benefit from Incredible shopping experiences, leisure activities and gastronomical delights all within a short distance.

Filling your weekend with fun and interesting activities will be a breeze. Abney Hall Park allows the local community to explore the historic hall, the secret pathways, ponds, wetlands and waterfalls whilst getting close to nature.

The stunning Bruntwood Park is closer to Foxcote, it offers a fantastic children's playground, 18 hole pitch and putt and Victorian conservatory restaurant.

Your retail needs are easily catered for, everyday convenience shops can be found a short walk away at Morrisons Daily or Londis. For your weekly shopping and a spot of retail therapy head down to Handforth Dean or Stanley Green Retail Park for home accessories. Just off Wilmslow road a John Lewis and Sainsbury's superstore can also be found.

Follow us for the latest trends @bloorhomes





① → Bluebell Green ② → Cheadle Directional Signage ③ → John Lewis Department Store, Cheadle

A WEALTH OF EDUCATIONAL OPTIONS NEARBY



Feeling perfectly at home in this wonderful location is easy, especially with plentiful local schools to choose from.

Families moving to Foxcote will find a range of primary schools within walking distance, Outwood, Bolshaws & Etchells Primary all achieving Good in their latest Ofsted Inspection and Cheadle Catholic Infant & Junior School achieved outstanding.

Local secondary schools include Cheadle Hulme High School, St James Catholic High School, Wilmslow High School and the independent Cheadle Hulme School with its excellent reputation and outstanding Ofsted report.

Sixth Form education can be found at all the high school above, apart from St James'. If your child would rather continue their education at a sixth form college, Cheadle college is just a couple of miles away from Foxcote.

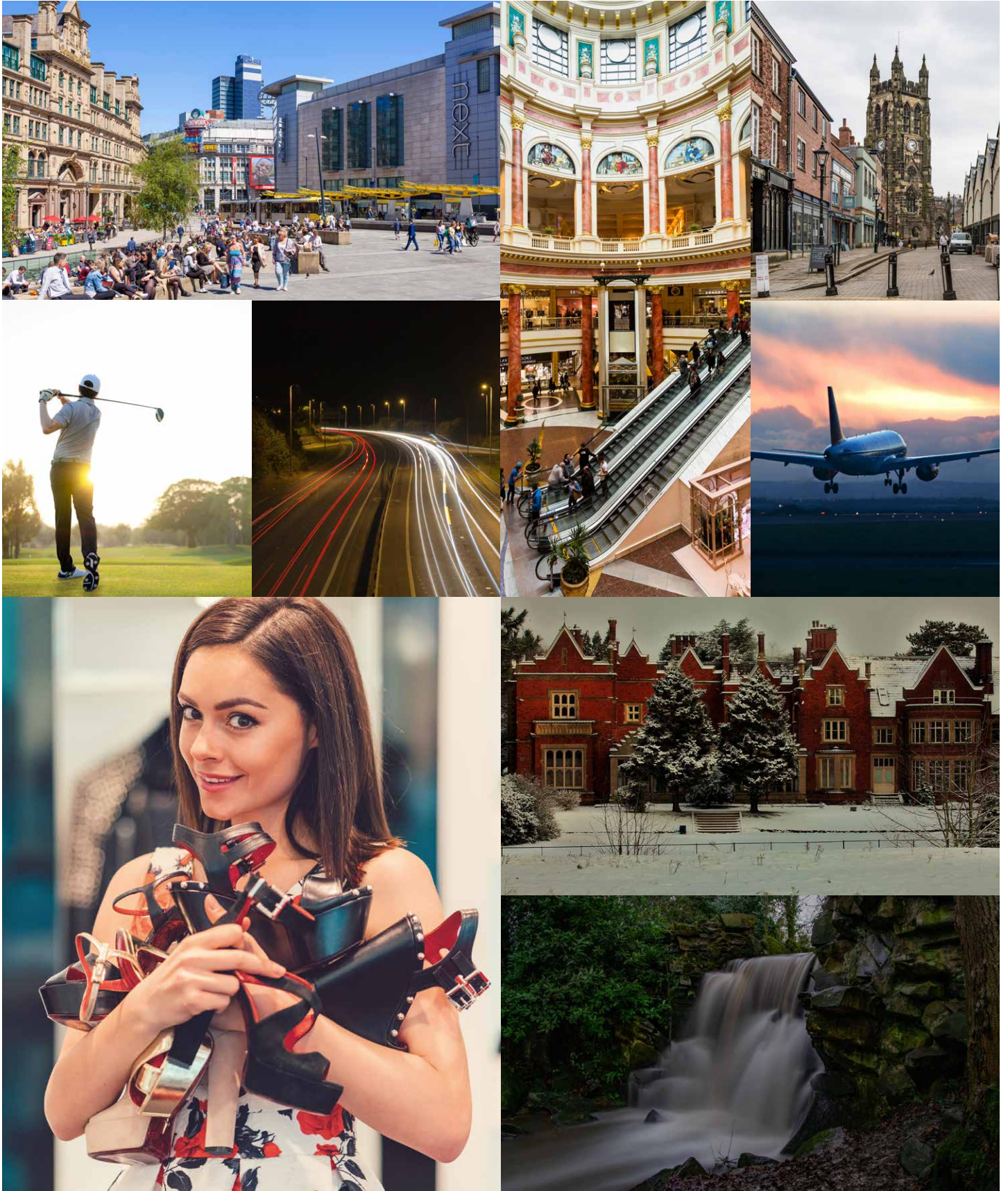
For further education, Manchester is the place to head to. More than 104,000 students are enrolled across the city region's five universities - The University of Manchester, Manchester Metropolitan University, University of Salford, University of Bolton and University Academy 92 - producing around 40,000 high quality graduates every year.

↳ Figures according to The Guardian 2022 League Table.

Follow us for the latest trends @bloorhomes







↳ Images for illustration purposes only.

JUST AROUND THE CORNER

Distances and journey times calculated using maps.google.com

2.2 MILES

Manchester Airport

Reached in under 5 mins by car, one of Europe's fastest growing airports. Flying to a wide selection of destinations.

M90 1QX

3 MILES

Gatley and Styal Golf Clubs

Two 18 holes golf courses can be found at Gatley and Styal Golf clubs, both are amongst the very best courses in the area.

SK8 3TW and SK9 4JN

6 MILES

Stockport

If you don't want to head into Manchester city centre, Stockport offers all the amenities of a great town.

Stockport City Centre, SK1 1PD

2.3 MILES

Cheadle Village

Just over two miles away from Foxcote is the quaint village of Cheadle, full of independent shops, bars and restaurants.

Cheadle Road, Cheadle Hulme, Cheadle, SK8 1HW

2.6 MILES

M60 and M56

Travel just got that little bit easier with direct access to the M60 & M56 motorways for excellent travel links, wherever your destination.

Trafficengland.com

10 MILES

Trafford Centre

Visit the largest indoor shopping centre in Greater Manchester, shop, eat, drink and see a film.

The Trafford Centre, Trafford Park, Stretford, Manchester M17 8AA

2.9 MILES

Abney Hall Park

Under 3 miles away, this beautiful Victorian house surrounded by parklands can be found, ideal for a peaceful and relaxing walk.

Abney Hall, Cheadle, K8 2BE

↳ All details correct at the time of production.

1.4 & 1.2 MILES

Handforth & Heald Green Train Stations

Handforth operates 2 trains per hour between Crewe and Manchester. Heald Green offers regular services to Manchester Piccadilly and Manchester airport.

SK9 3BA & SK8 3QH

10 MILES

Manchester City Centre

Visit this thriving city for a touch of art and culture, retail therapy or simply to enjoy a great night out at one of the cities bars & restaurants.

Manchester Arndale, Manchester M4 3AQ

Follow us for the latest trends @bloorhomes



LOWER YOUR ENERGY BILLS, INCREASE YOUR QUALITY OF LIFE

We're committed to building our new homes to maximise energy efficiency, with the latest central heating systems and excellent insulation solutions.

In fact, you could find yourself saving up to £493* a year in utility bills when you buy a new Bloor home at Foxcote. That's more than 4 weeks of family food shops!

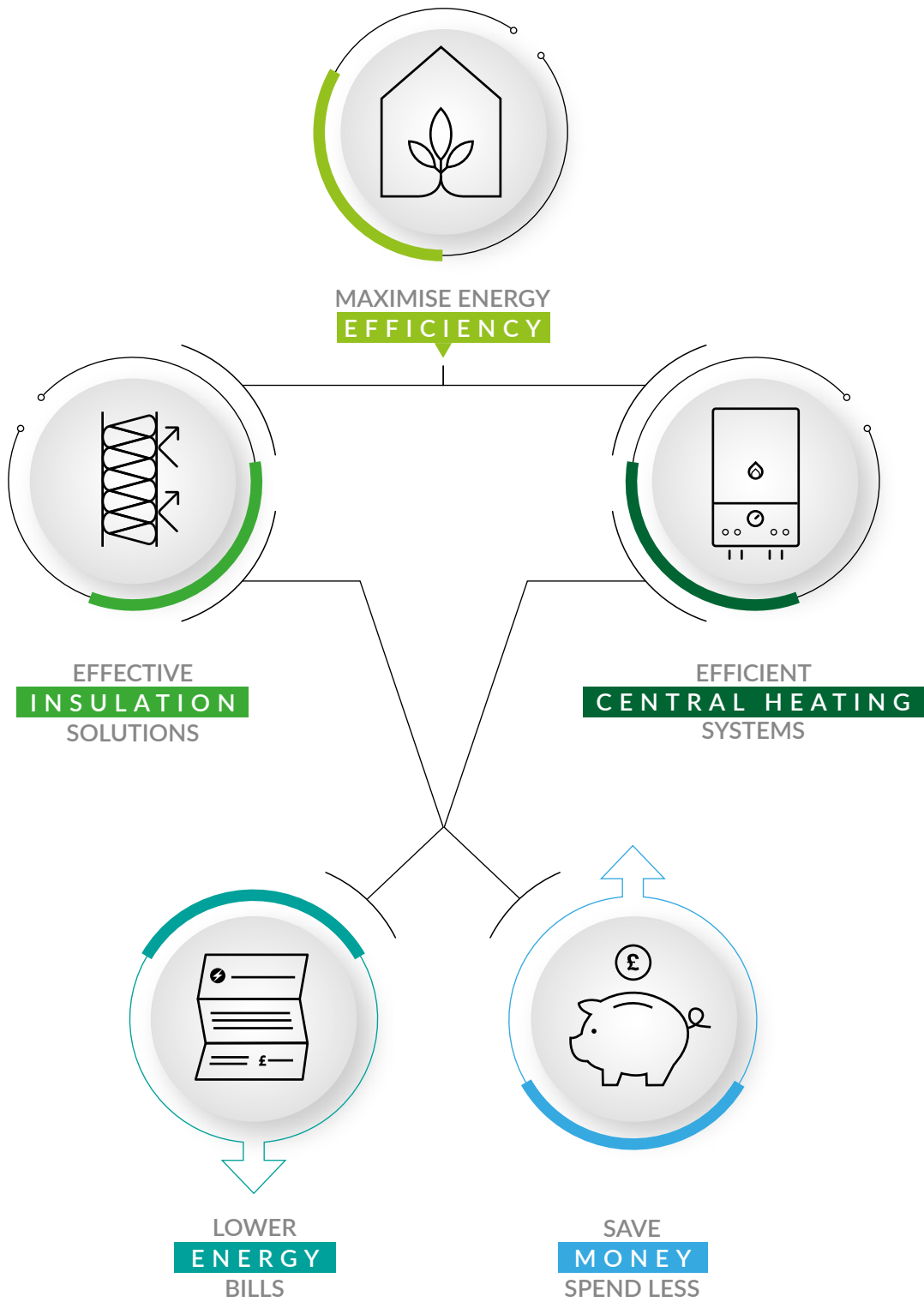
So whether you choose to reinvest your money back into your mortgage, or save for your dream family holiday, you can sit back and relax knowing your new home is costing you less.

Not only that, you'll have the added piece of mind with both our own 2 year warranty and a 10 year build warranty from the NHBC, knowing that our expert Customer Care team will be on hand for any queries you may have after you move in.

*Source <https://www.hbf.co.uk/news/hbf-report-newbuild-energy-efficiency-2019>

Follow us for the latest trends @bloorhomes







YOU'RE IN CAPABLE HANDS

Choosing to buy a new Bloor home eliminates many of your worries. With no repairs or renovations to do, you will be able to enjoy spending more quality time with your friends and family.

We hope you will never need it, but that doesn't mean we don't understand the peace of mind that comes with having an insurance backed 10 year warranty from the NHBC.

As well as our own rigorous checks carried out during the build process, the warranty provider will also carry out their own inspections on your new home, ensuring that it's built to the high quality we pride ourselves on.

Most of us don't regularly buy a new home, so it's no wonder it can seem a little confusing at times. But it's not as scary as you might think, we'll hold your hand through the entire buying process. After all, we've been doing this for over fifty years.

We'll work hard to make sure you know exactly what to do and when to do it. That way, you'll have all the information you need to hand. Simply follow our step by step guide and know that we'll be here to answer all your questions. The first step to making your move, is deciding if new is right for you.

And what's more, we'll keep on looking after you and your home long after you've moved in.

↳ Typical Interiors



Bloor Homes North West,
Foxcote,
Wilmslow Road,
Cheadle,
SK8 3NN

foxcote@bloorhomes.com
www.bloorhomes.com

