



EVESHAM GATE
EVESHAM

Creating Better Life Experiences.
One Home at a Time.



Evesham Gate Sales & Marketing Suite
Cheltenham Road, Evesham, WR11 2BE

01386 896328





CONTENTS

04/05

Building Quality
New Homes

06/07

Peace
Of Mind

08/09

More Than Just
A Home

10/11

Development
Location

12/13

Superb
Amenities

14/15

Experience
Culture

16/17

Explore
Evesham

18/19

Education

20/21

Visit Us

22/23

Make
Your Move

BUILDING QUALITY NEW HOMES FOR OVER FIFTY YEARS

A lot may have changed since the day that John Bloor built the first Bloor home in 1969, but one thing has remained the same. Our dedication to providing beautifully crafted homes in fantastic locations, so you and your family can enjoy life to the fullest.

We're still owned by the Bloor family and today, that same dedication is clearly present throughout our careful consideration of the development layout and each home we've chosen to build here at Evesham Gate.

We understand that buying a new home is a big commitment so we want your Bloor home here in Evesham to be ready to accompany you throughout your life – no questions asked. That's why it's important each one of our homes appreciates your need for space and growth.

Plus, when you reserve your new Bloor home in the early stages of construction, you can have the freedom to choose your internal fixtures and fittings for your kitchen, bathroom and en suite facilities. Our comprehensive 'Your Choice' brochure can help with choosing those extra details for your new home, should you wish you upgrade from our chosen specification here at Evesham Gate.





① ↪ Evesham Gate ② ↪ Typical Interior



SAT NAV

Development
Evesham Gate

Find Us Here
Cheltenham Road, Evesham,
WR11 2BE.

PEACE OF MIND

**There's no need
to compromise with
a new Bloor home
at Evesham Gate.**

It's all of those little things that add up, so that with a new Bloor home, you can enjoy spending your precious time with your family, rather than worrying about costly renovations or repairs.

backed 10 year warranty from the NHBC. You can always be assured that your new home has been built to the high quality we pride ourselves on.

We'll not only give you peace of mind with our own regular rigorous checks, but also with an insurance

Follow us for
the latest trends
@bloorhomes





① ↳ Typical Interior ② ↳ Lifestyle ③ ↳ Evesham Gate

MORE THAN JUST A HOME

Evesham Gate offers you far more than just a new home, because we know what's outside your front door is as important as what's inside.

Before a spade touches the ground, we make every effort to ensure the right location of your new home, not because we have to, but because we want to.

All our homes are carefully designed down to the finest detail to ensure our developments stand the test of time. We carry out extensive research in the early planning stage to select characterful street scenes that complement the surrounding styles and existing materials.

We're delighted to be building again in this wonderful Worcestershire location. Sitting on the southern edge of Evesham, our brand new style of homes offer beautiful

traditionally inspired architecture with stylish contemporary interiors, reflecting the historical yet exciting bustling nature of this location.

Despite Evesham's picturesque riverside appearance, this town is far from being a sleepy hollow. With a wonderful array of traditional pubs, quirky restaurants and numerous leisure outlets, you'll be sure to have a plan for every weekend even just by simply staying close to home!

Follow us for
the latest trends
@bloorhomes





①



②

① ↪ Evesham Gate ② ↪ Typical Interior

WHERE DO YOU WANT TO LIVE?

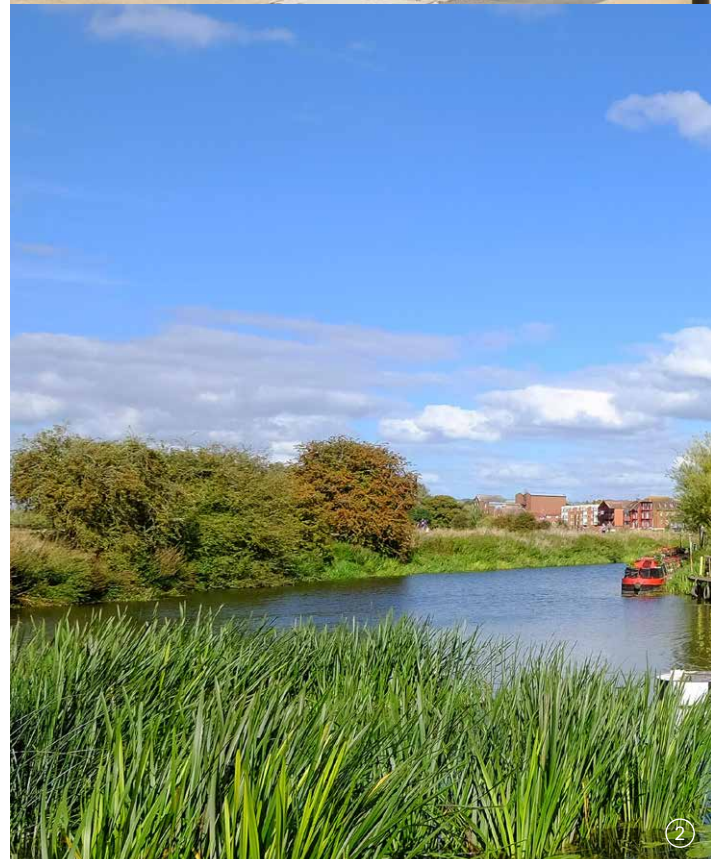
Living in such a fantastic location such as Evesham might mean you don't feel the need to explore much further - but just in case curiosity takes you, we promise that the surrounding areas of Worcestershire and Gloucestershire won't disappoint.

If you're looking for a spot of retail therapy with that added touch of regency luxury, Cheltenham is the place for you and it's only approximately 30 minutes by car from your new doorstep. With a variety of boutique and high street shops, top class restaurants and the stunning green of Montpellier gardens, this highly acclaimed location is a perfect pit stop.

Or perhaps you'd like to take a journey alongside the winding River Severn? The riverside town of Tewkesbury and buzzing city of Worcester both offer great days

out. More high street stores are in abundance in Worcester with the recently renovated centre boasting even more eateries and bars than ever before. Or a quieter day can be spent in Tewkesbury with wholesome historical pubs and a chance for a leisurely boat ride.

Despite Evesham's picturesque riverside appearance, this town is far from being a sleepy hollow. With a wonderful array of traditional pubs, quirky restaurants and numerous leisure outlets, you'll be sure to have a plan for every weekend even just by simply staying close to home.





① ③ → Cheltenham High Street ② ④ → River Severn, Tewkesbury



↳ Images for illustration purposes only.

JUST AROUND THE CORNER

Distances and journey times calculated using maps.google.com

11 MILES

M5 Motorway

Taking your adventure further afield is effortless by simply hopping on the M5 motorway, connecting you far and wide across the Midlands!

[trafficengland.com](https://www.trafficengland.com)

2 MILES

Abbey Park

Play or lounge around on open grassy areas with picnic seating, play areas and a lovely lily pool.

Evesham WR11 4SL
[visitworcestershire.org](https://www.visitworcestershire.org)

6.9 MILES

All Things Wild

Enjoy family fun with animals, dinosaurs and soft play all year round with both indoor and outdoor facilities!

Evesham WR11 7QZ

14 MILES

Cheltenham Racecourse

Enjoy the highly popular Cheltenham Festival hosting National Hunt Racing or other various epic events.

Cheltenham GL50 4SH
[thejockeyclub.co.uk](https://www.thejockeyclub.co.uk)

1.5 MILES

Regal Cinema

This is no ordinary cinema. With candlelit tables, loveseats and a wine bar open in the evenings, watching films is a new experience.

Evesham WR11 3LD
[theregal.ac](https://www.theregal.ac)

1.5 MILES

The Hampton Ferry

Known as "Evesham's Natural Beauty Spot", take a ferry ride down the River Severn at Hampton Ferry after visiting Raphael's restaurant!

Evesham WR11 4BP
[hamptonferry.co.uk](https://www.hamptonferry.co.uk)[hamptonferry.com](https://www.hamptonferry.com)

1.2 MILES

Waitrose Supermarket

Whether you've forgotten the milk or looking for dinner inspiration, this desirable supermarket can be at the top of your shopping list.

Evesham WR11 4BD
[waitrose.com](https://www.waitrose.com)

↳ All details correct at the time of production.

7 MILES

Broadway Village

Spend the weekend in a beautiful Cotswold village, offering a fantastic theatre and highly commended restaurants.

Broadway WR12 7LB
[broadway-cotswolds.co.uk](https://www.broadway-cotswolds.co.uk)

36 MILES

Birmingham Airport

Taking to the skies? Jet off to your favourite international destination from one of the most connected airports in the UK.

Birmingham B26 3QJ
[birminghamairport.co.uk](https://www.birminghamairport.co.uk)

Follow us for the latest trends
[@bloorhomes](https://www.instagram.com/bloorhomes)



AN APPETITE FOR CULTURE

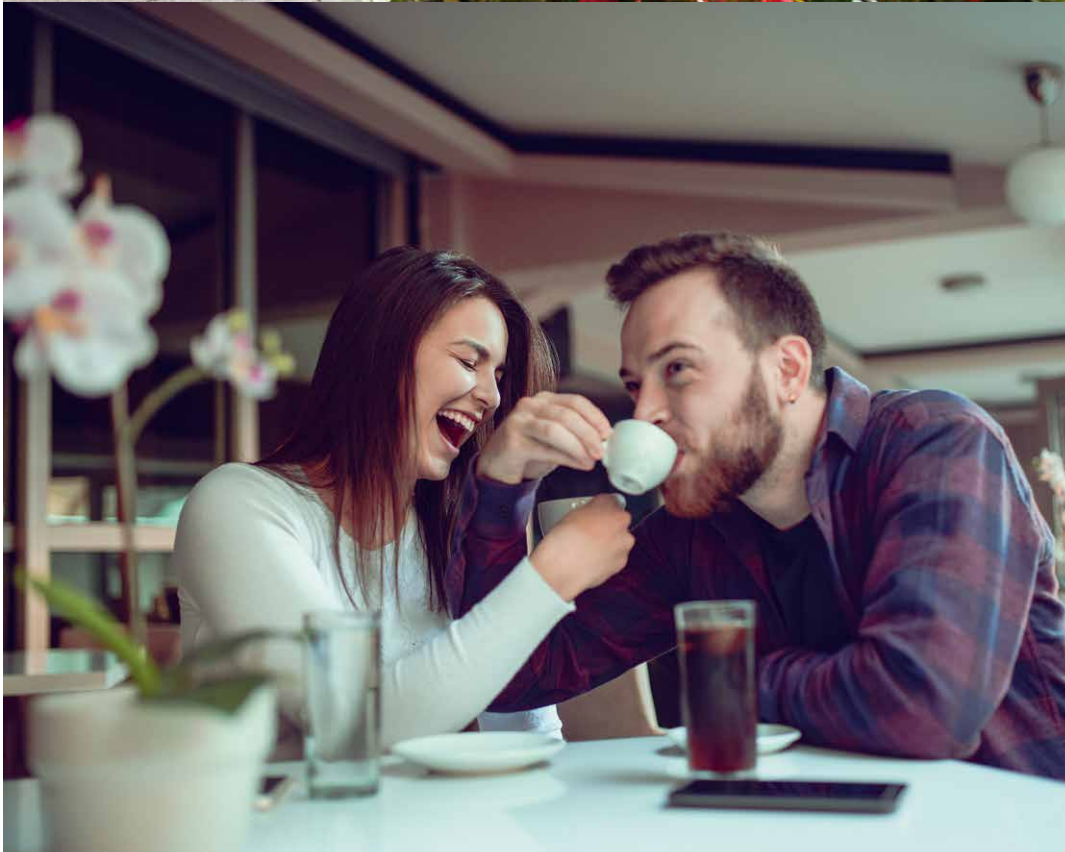
It might be hard to break away from enjoying your brand new kitchen in your new Bloor home - but we know that sometimes you just want to treat yourself to a meal out. So what does Evesham have to offer?

Being a popular riverside town, Evesham has well equipped itself to satisfy your appetite.

For those sunny weekends spent mooching in the town, there's truly nothing better than a superb pub lunch - and the possibilities are

endless here. Burgers, steaks and traditional roast dinners are highly recommended at several eateries including The Royal Oak, The Ivy Inn and The Thatched Tavern.





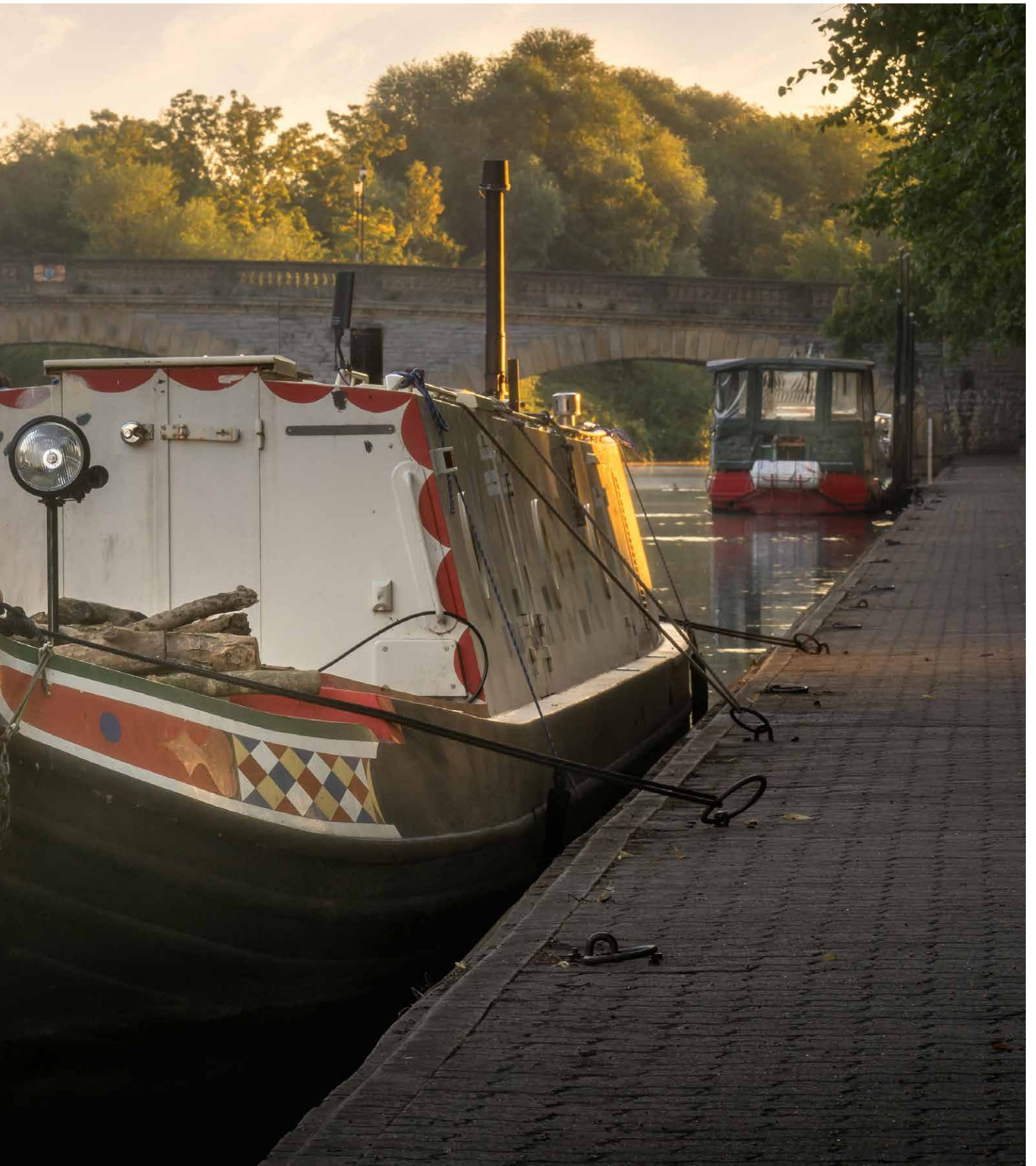
① ② ↪ Evesham Town Centre

If you're looking to spice up your taste buds, you're in for a treat in your hometown. Step over the bridge across a Koi fish pond and enjoy a variety of Asian and Thai meals at Thai Emerald on the High Street. Or if Chinese cuisine is on the menu, Yumi Yumi is locally acclaimed for fantastic food with a great selection of vegan and vegetarian options. Plus, the restaurant has maintained a Certificate of Excellence for four years.

* All details correct at the time of production.



① → Workman Bridge, River Avon



PERFECTLY CATERED TO FAMILIES

Feeling perfectly at home in this wonderful location is easy, especially with such fantastic local schools to choose from.

With an array of local schools located within an easy distance, your family will find it easy to settle in at Evesham Gate.

The choice is yours with four 'Good' rated primary schools reached within 2 miles, meaning those early morning school runs are completed within a 10 minute drive or just over a 30 minute walk if you're adventurous enough!

We know moving home and schools may not always be a teenager's favourite thing to do, but finding the very best secondary education for them is easy in Evesham. Local secondary schools include 'Outstanding' rated Prince Henry's High School, De Montford High

School and Pershore High School - the latter of which are rated 'Good' by Ofsted. Less than 2 miles away you can also find Vale of Evesham Academy, an 'Outstanding' mixed gender school supporting those aged from 2 years old up to 19 with learning difficulties or Autism.

Lastly, that jump to University doesn't have to be much of a location leap if your budding young adult wants to stay closer to home.

Renowned for fantastic courses in midwifery and teaching and excellent sports facilities, Worcester University (17 miles) is ranked 15th for teaching quality in the National Student Survey and 18th for student experience in the Times Good University Guide.

↳ *Ofsted ratings correct at time of production.

<p>AT EVESHAM GATE, YOU CAN REST ASSURED YOUR CHILD'S EDUCATION IS WELL CATERED FOR AT ANY LEVEL</p>	
<p>PRIMARY</p>	<p>WINDMILL HILL PRIMARY SCHOOL Windmill Hill, Runcorn. WA7 6QE Tel: 01928 712337</p> <p>Ofsted: Outstanding</p>
	<p>BRIDGEWATER PRIMARY SCHOOL Plantation Close, Runcorn. WA7 2LW Tel: 01928 863838</p> <p>Ofsted: Good</p>
	<p>ST BERTELINE'S C OF E PRIMARY Norton Lane, Runcorn. WA7 6QN Tel: 01928 719847</p> <p>Ofsted: Outstanding</p>
<p>SECONDARY / SIXTH FORM</p>	<p>PRINCE HENRY'S HIGH SCHOOL Victoria Avenue, Evesham. WR11 4QQ Tel: 01386 765588</p>
	<p>DE MONTFORD HIGH SCHOOL Four Pools Road, Evesham. WR11 1DQ Tel: 01386 442060</p>
	<p>PERSHORE HIGH SCHOOL Station Road, Persnore. WR10 2BX Tel: 01386 552471</p>
<p>FURTHER</p>	<p>WORCESTER UNIVERSITY Castle Street, Worcester. WR1 3AS Tel: 01905 855000</p> <p>VALE OF EVESHAM ACADEMY Four Pools Lane, Evesham. WR11 1BN Tel: 01386 443367</p>



NOW IT'S TIME TO VISIT

Book your appointment to Evesham Gate to make your dream move today.

We've thoughtfully designed every home at Evesham Gate offer you and your family with spacious and inviting living areas that maximise the natural light and add a touch of luxury to your everyday living.

So what better way to experience this for yourself then visiting our showhomes?

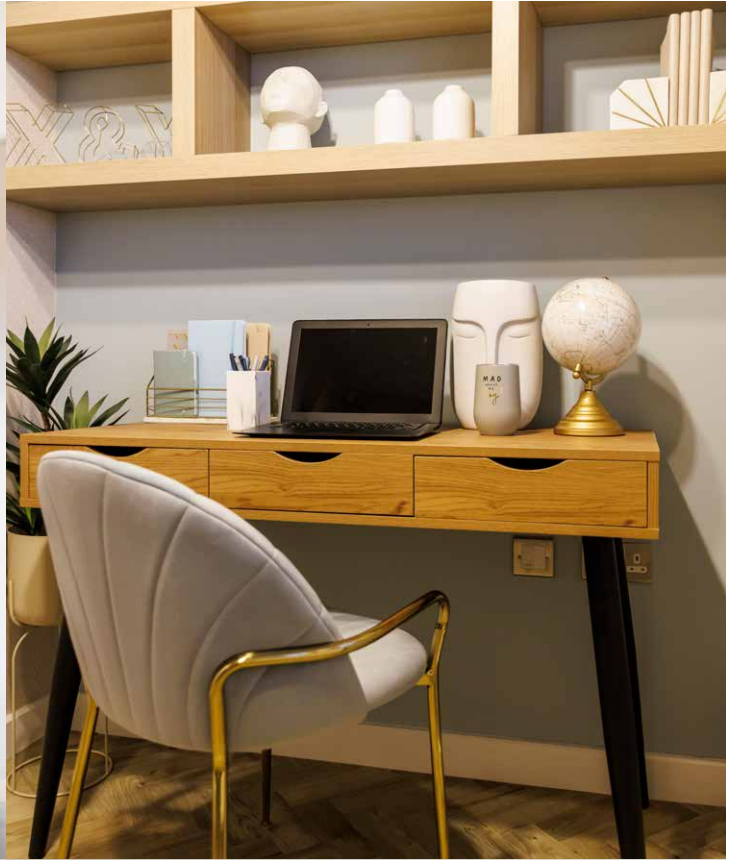
We've included a variety of different option and upgrade selections in each of our showhomes so you can truly

see our comprehensive range of fixtures and fittings for yourself – and perhaps get some inspiration for your new home!

Book your appointment to visit our experienced and friendly Sales Team so we can show you the very best of Evesham Gate and begin your journey to a brand new Bloor home.

Follow us for the latest trends @bloorhomes





WE'RE HERE, LONG AFTER WE HAND OVER THE KEYS

Your journey with us may begin with you walking through the doors of our Sales Office, but it certainly doesn't end when you walk out.

We've taken the time to carefully produce and implement a genuine and trustworthy Customer Journey procedure that goes beyond the final moments of buying your home.

Every member of our team wants your home to be just right for you, and should you need us, our expertly trained Customer Care team are on hand to help.

Our Sales Teams maintain regular contact from reservation, exchange and right through to the completion of your home, whilst our Site Team follow our 10 Day Maintenance procedure should you need any assistance once you've moved in.

So start your journey with us today and rest assured we'll hold your hand every step of the way. After all, we have been doing this for over fifty years.

Follow us for the latest trends @bloorhomes







Bloor Homes Western,
Rudgeway House,
Celandine Road,
Tewkesbury,
Gloucestershire,
GL20 7FU

west@bloorhomes.com
www.bloorhomes.com



BLOOR HOMES[®]