



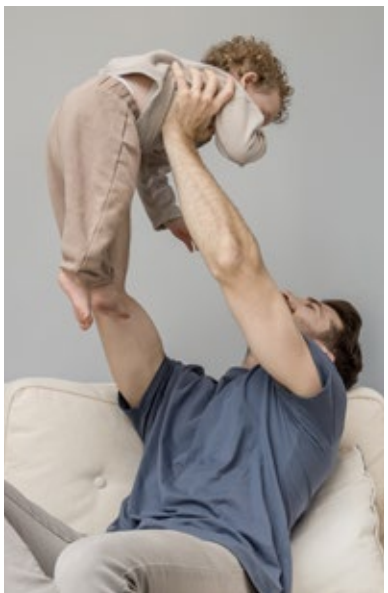
**The Fairways
Wombwell**

millerhomes

the place to be®

- 04 Living in Wombwell
- 08 Welcome Home
- 12 Floorplans
- 46 The Miller Difference
- 50 Useful Contacts
- 52 How to Find Us

A new home. The start of a whole new chapter for you and your family. And for us, the part of our job where bricks and mortar becomes a place filled with activity and dreams and fun and love. We put a huge amount of care into the houses we build, but the story's not finished until we match them up with the right people. So, once you've chosen a Miller home, we'll do everything we can to make the rest of the process easy, even enjoyable. From the moment you make your decision until you've settled happily in, we'll be there to help.



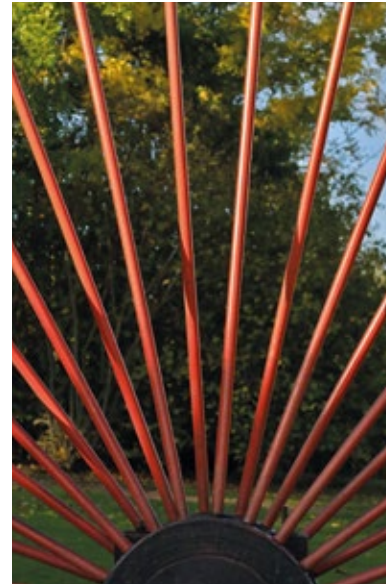
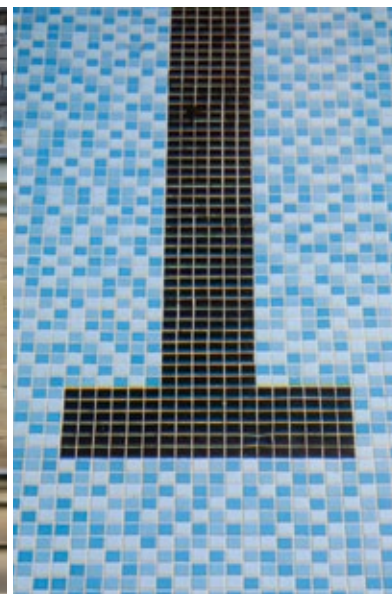


Quality of life is about the details of everyday living. From the little things, like knowing the nearest place to pick up a pint of milk, to more important matters like finding the right school or having a health centre nearby, you need to know that the community you're moving to will support you and your family, as well as being a pleasant place to live. So here's some useful information about the area around the Fairways.

A little over half a mile from the A6195 Dearne Valley Parkway and half an hour's drive from Sheffield, The Fairways has excellent transport connections. Trains from Wombwell Station run to Huddersfield, Sheffield and Leeds, reaching Sheffield in less than 25 minutes and Leeds in around an hour. Barnsley is five minutes away by rail. Buses to Barnsley, Doncaster and Rotherham stop nearby, and National Cycle Routes 62 and 67 both pass half a mile from the development. The High Street presents an eclectic choice of shops, pubs, cafés and hairdressers.

There are newsagents and convenience stores, a Post Office, a Tesco Express, pharmacies, a hardware store and other specialists, alongside food takeaways. A mile away, Cortonwood Retail Park includes larger stores such as a Morrisons Supermarket and garden centre, Argos, B&Q, Asda and M&S.

Wombwell's Amateur Dramatic and Operatic Societies each have their own theatre, while the Old Town Hall, near the local library, is now a pub with live music at weekends. Sports and leisure amenities include the nine-hole Hillies Golf Course, a few yards from the development, and there are two gyms in the town centre and a swimming pool near Broomhill Park. More unusual attractions include the fascinating Elsecar Heritage Village and, in complete contrast, the Britannia Flight Simulator which presents the opportunity to 'fly' a Boeing 737. Both are around two miles away. The short trip into Barnsley opens up a choice of cinemas, theatres and special events at the Metrodome.

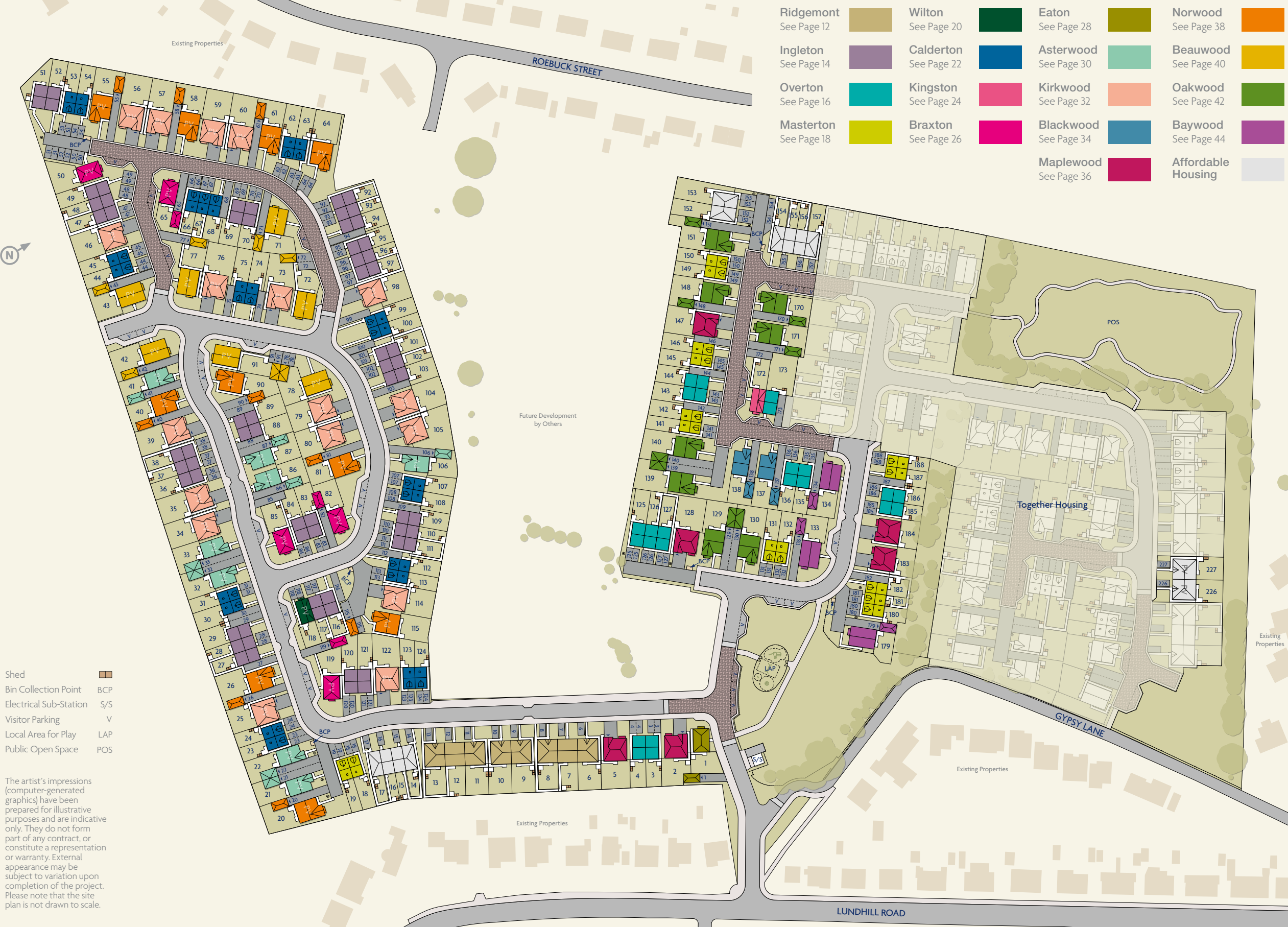


Welcome home

Beautifully landscaped with open green spaces and a play area, the peaceful setting of these attractive homes contrasts with their exceptionally convenient location. Just a short walk from the amenities of the town's traditional high street, ten minutes' drive from the M1 and less than five miles from Barnsley, this new neighbourhood of energy efficient two, three and four bedroom homes provides an ideal base for travel throughout the North. Welcome to The Fairways...

The artist's impressions (computer-generated graphics) have been prepared for illustrative purposes and are indicative only. They do not form part of any contract, or constitute a representation or warranty. External appearance may be subject to variation upon completion of the project.





Ridgmont See Page 12	Wilton See Page 20	Eaton See Page 28	Norwood See Page 38
Ingleton See Page 14	Calderton See Page 22	Asterwood See Page 30	Beauwood See Page 40
Overton See Page 16	Kingston See Page 24	Kirkwood See Page 32	Oakwood See Page 42
Masterton See Page 18	Braxton See Page 26	Blackwood See Page 34	Baywood See Page 44
		Maplewood See Page 36	Affordable Housing

Shed	BCP
Bin Collection Point	S/S
Electrical Sub-Station	V
Visitor Parking	LAP
Local Area for Play	POS
Public Open Space	

The artist's impressions (computer-generated graphics) have been prepared for illustrative purposes and are indicative only. They do not form part of any contract, or constitute a representation or warranty. External appearance may be subject to variation upon completion of the project. Please note that the site plan is not drawn to scale.

Ridgemont

Overview

This exciting two bedroom bungalow features an open plan and dual-aspect kitchen/dining/living area that spans the length of the property. French doors lead from the living area to the rear garden, whilst the welcoming hallway at the front opens to the kitchen, principal bedroom, family bathroom and second bedroom at the front.

Ground Floor

Living
3.87m x 3.35m
12'8" x 11'0"

Kitchen
2.58m x 2.48m
8'6" x 8'2"

Dining
2.25m x 2.52m
7'5" x 8'3"

Principal Bedroom
3.34m x 3.65m
11'0" x 12'0"

Bedroom 2
3.19m x 2.36m
10'6" x 7'9"

Bathroom
1.92m x 2.15m
6'4" x 7'1"

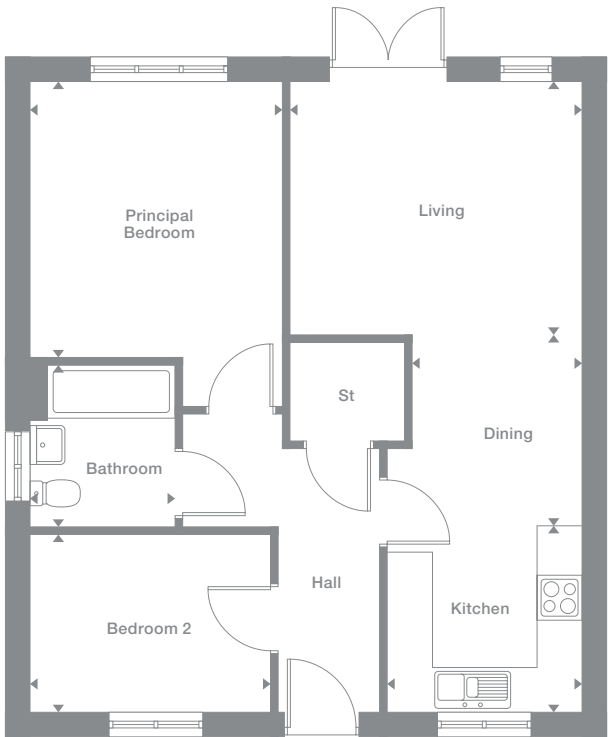
Floor Space

657 sq ft

Plots may be a mirror image of the floor plans. Please see Development Sales Manager for details



Ground Floor



Photography represents typical Miller Homes' interiors and exteriors. All plans in this brochure are not drawn to scale and are for illustrative purposes only. Consequently, they do not form part of any contract. Room layouts are provisional and may be subject to alteration. Please refer to the 'Important Notice' section at the back of this brochure for more information.

Ingleton

Overview

Complementing a bright, comfortable lounge, french doors transform the kitchen and dining room into an airy, adaptable space. A separate laundry adjoins the downstairs WC, and the family bathroom shares the downstairs WC, and the family bathroom shares the first floor with three bedrooms, including an en-suite principle bedroom with built-in storage space.

Ground Floor

Lounge
3.53m x 4.45m
11'7" x 14'8"

Kitchen/Dining
3.27m x 3.80m
10'9" x 12'6"

Laundry
1.11m x 1.92m
3'8" x 6'4"

WC
1.11m x 1.78m
3'8" x 5'10"

First Floor

Principal Bedroom
2.98m x 3.24m
9'9" x 10'8"

En-Suite
1.18m x 1.99m
3'10" x 6'7"

Bedroom 2
2.37m x 3.22m
7'10" x 10'7"

Bedroom 3
2.00m x 2.14m
6'7" x 7'0"

Bathroom
2.37m x 1.70m
7'10" x 5'7"

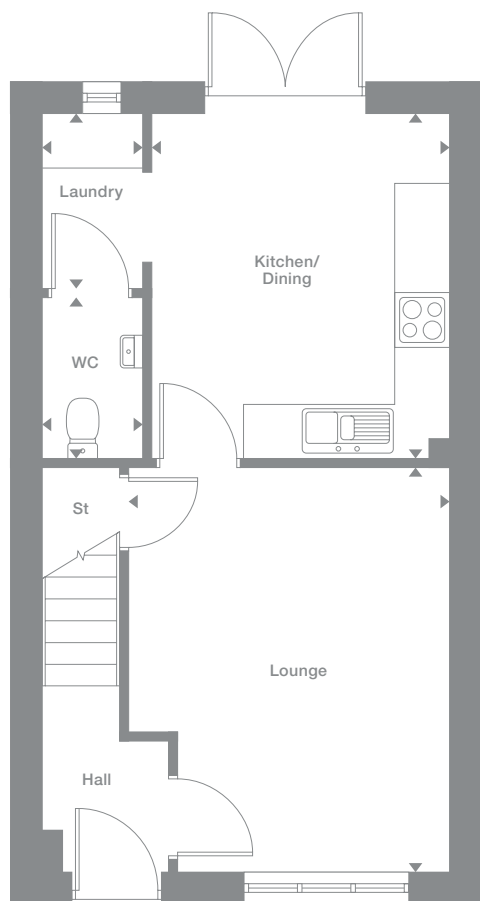
Floor Space

806 sq ft

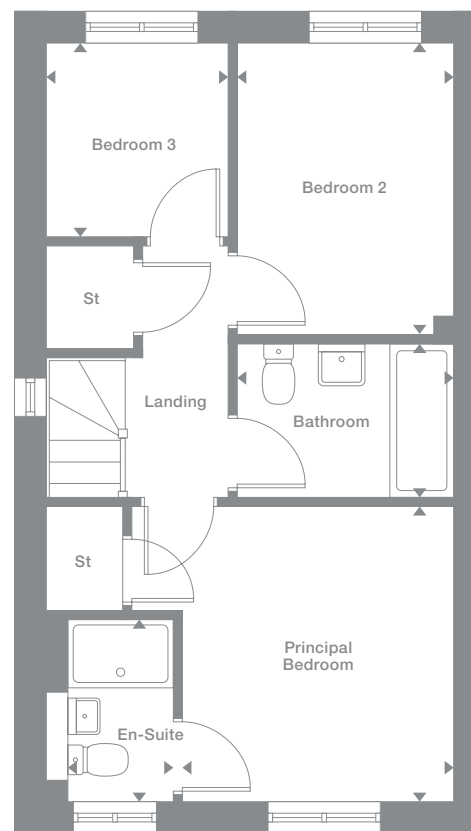
Plots may be a mirror image of the floor plans. Please see Development Sales Manager for details



Ground Floor



First Floor



Photography represents typical Miller Homes' interiors and exteriors. All plans in this brochure are not drawn to scale and are for illustrative purposes only. Consequently, they do not form part of any contract. Room layouts are provisional and may be subject to alteration. Please refer to the 'Important Notice' section at the back of this brochure for more information.

Overton

Overview

With its bright lounge and light, airy kitchen, where french doors add a focal point to the dining area, this attractive home is ideal for entertaining. There is a dedicated laundry space, and the principal bedroom includes an en-suite shower and a generously sized cupboard.

Ground Floor

Lounge
3.56m x 4.49m
11'8" x 14'9"

Kitchen/Dining
3.31m x 3.83m
10'10" x 12'7"

Laundry
1.11m x 1.96m
3'8" x 6'5"

WC
1.11m x 1.78m
3'8" x 5'10"

First Floor

Principal Bedroom
3.09m x 3.28m
10'2" x 10'9"

En-Suite
1.18m x 2.03m
3'10" x 6'8"

Bedroom 2
2.37m x 3.26m
7'10" x 10'8"

Bedroom 3
2.04m x 2.17m
6'8" x 7'2"

Bathroom
2.37m x 1.69m
7'10" x 5'7"

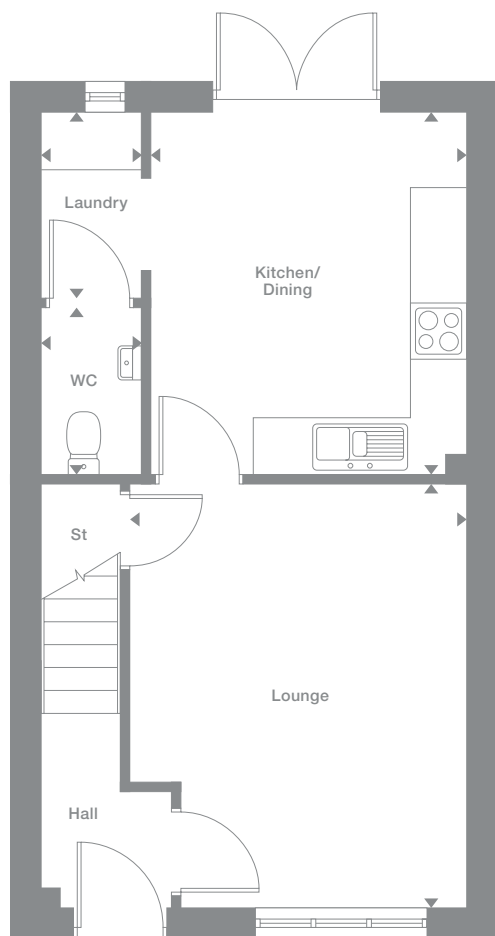
Floor Space

819 sq ft

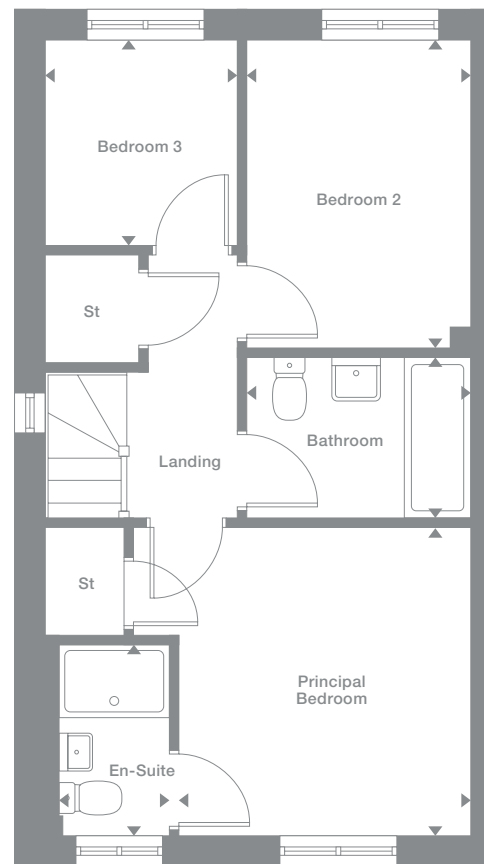
Plots may be a mirror image of the floor plans. Please see Development Sales Manager for details



Ground Floor



First Floor



Photography represents typical Miller Homes' interiors and exteriors. All plans in this brochure are not drawn to scale and are for illustrative purposes only. Consequently, they do not form part of any contract. Room layouts are provisional and may be subject to alteration. Please refer to the 'Important Notices' section at the back of this brochure for more information.

Masterton

Overview

This exciting home features an inviting lounge that opens on to a stylish dining kitchen with french doors, adding convenience and flexibility to family life. In addition to the two first floor bedrooms there is a luxurious en-suite principal bedroom with a traditional dormer window.

Ground Floor

Lounge
2.89m x 4.37m
9'6" x 14'4"

Kitchen/Dining
3.88m x 3.10m
12'9" x 10'2"

WC
1.07m x 1.51m
3'6" x 4'11"

First Floor

Bedroom 2
3.88m x 2.78m
12'9" x 9'2"

Bedroom 3
1.88m x 2.56m
6'2" x 8'5"

Bathroom
1.69m x 2.03m
5'7" x 6'8"

Second Floor

Principal Bedroom
2.92m x 2.74m
9'7" x 9'0"

En-Suite
2.19m x 1.60m
to 1500m H.L.
7'2" x 5'3"

Floor Space

831 sq ft

† Window position may vary. Please see siteplan or speak to our Development Sales Manager for clarification.

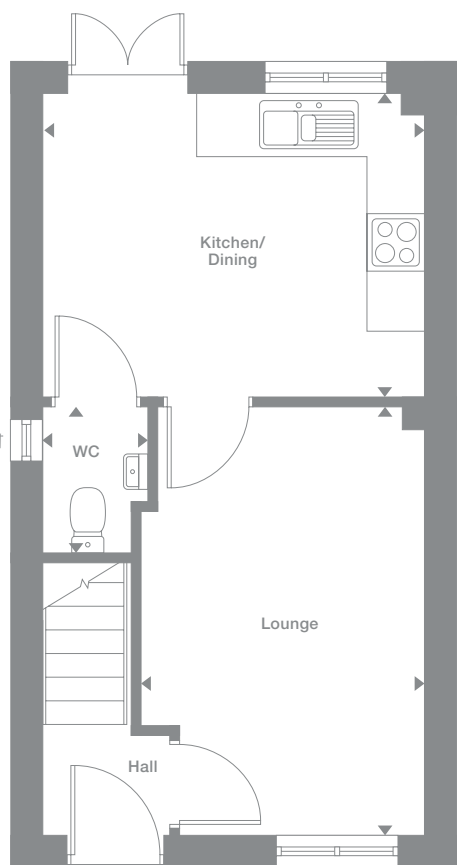
Denotes full height ceiling line

Denotes 1500m height ceiling line

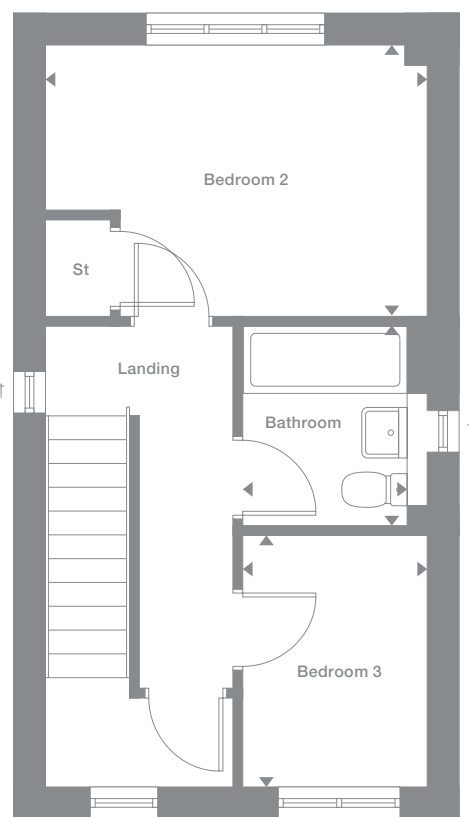
Plots may be a mirror image of the floor plans. Please see Development Sales Manager for details



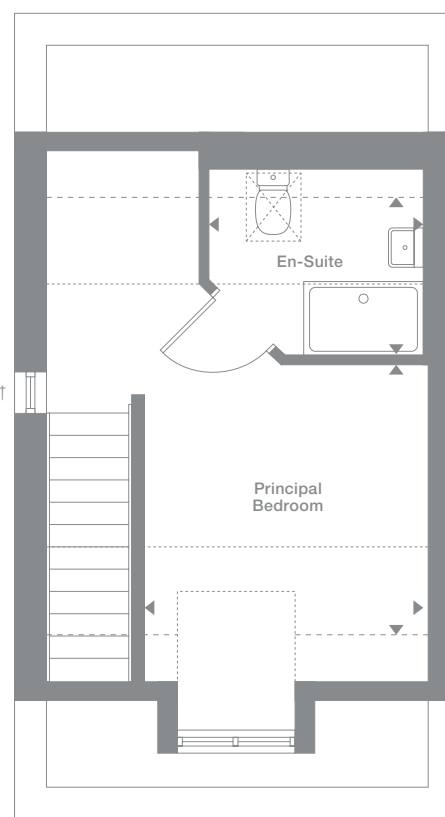
Ground Floor



First Floor



Second Floor



Photography represents typical Miller Homes' interiors and exteriors. All plans in this brochure are not drawn to scale and are for illustrative purposes only. Consequently, they do not form part of any contract. Room layouts are provisional and may be subject to alteration. Please refer to the 'Important Notices' section at the back of this brochure for more information.

Wilton

Overview

With dual aspect windows in the lounge and the kitchen, and french doors in the dining area, this is a delightfully light, airy home. Upstairs, in addition to the family bathroom there are three bedrooms, one of them en-suite and another with dual aspect outlooks.

Ground Floor

Lounge
4.65m x 3.62m
15'3" x 11'11"

Kitchen
2.88m x 3.42m
9'6" x 11'3"

Dining
1.76m x 2.32m
5'10" x 7'8"

WC
1.67m x 1.00m
5'6" x 3'3"

First Floor

Principal Bedroom
3.32m x 2.98m
10'11" x 9'9"

En-Suite
1.00m x 2.75m
3'4" x 9'0"

Bedroom 2
2.53m x 3.42m
8'4" x 11'3"

Bedroom 3
2.02m x 3.42m
6'8" x 11'3"

Bathroom
1.70m x 1.96m
5'7" x 6'5"

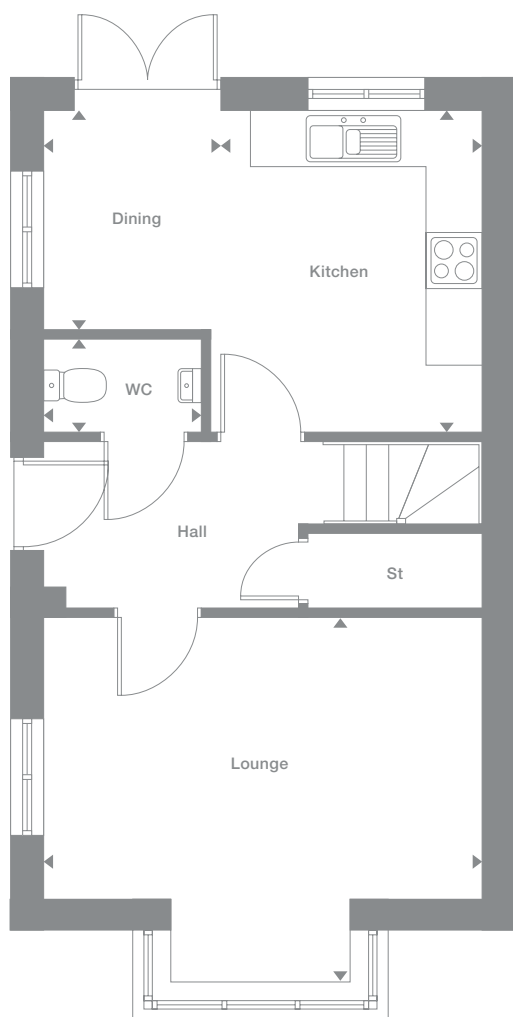
Floor Space

837 sq ft

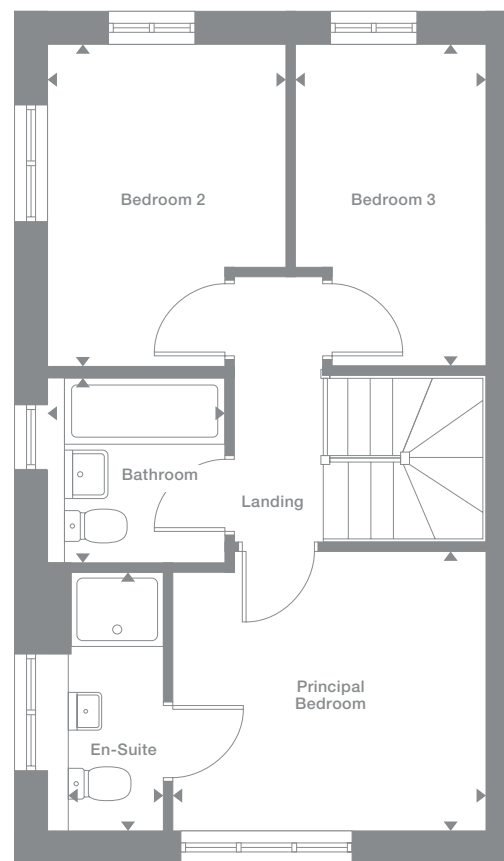
Plots may be a mirror image of the floor plans. Please see Development Sales Manager for details



Ground Floor



First Floor



Photography represents typical Miller Homes' interiors and exteriors. All plans in this brochure are not drawn to scale and are for illustrative purposes only. Consequently, they do not form part of any contract. Room layouts are provisional and may be subject to alteration. Please refer to the 'Important Notices' section at the back of this brochure for more information.

Calderton

Overview

The lounge opens on to a bright kitchen where french doors enhance the dining area. There is a downstairs WC, two of the three bedrooms share the first floor with the family bathroom and the en-suite dual aspect principal bedroom features a charming dormer window.

Ground Floor

Lounge
2.96m x 4.30m
9'9" x 14'1"

Kitchen/Dining
3.96m x 3.11m
13'0" x 10'3"

WC
1.07m x 1.50m
3'6" x 4'11"

First Floor

Bedroom 2
3.96m x 2.76m
13'0" x 9'1"

Bedroom 3
1.95m x 2.52m
6'5" x 8'4"

Bathroom
1.70m x 2.03m
5'7" x 6'8"

Second Floor

Principal Bedroom
3.00m x 2.52m
9'10" x 8'3"

En-Suite
1.89m x 1.81m
to 1.500m H.L.
6'3" x 6'0"

Floor Space

842 sq ft

† Window position may vary. Please see siteplan or speak to our Development Sales Manager for clarification.

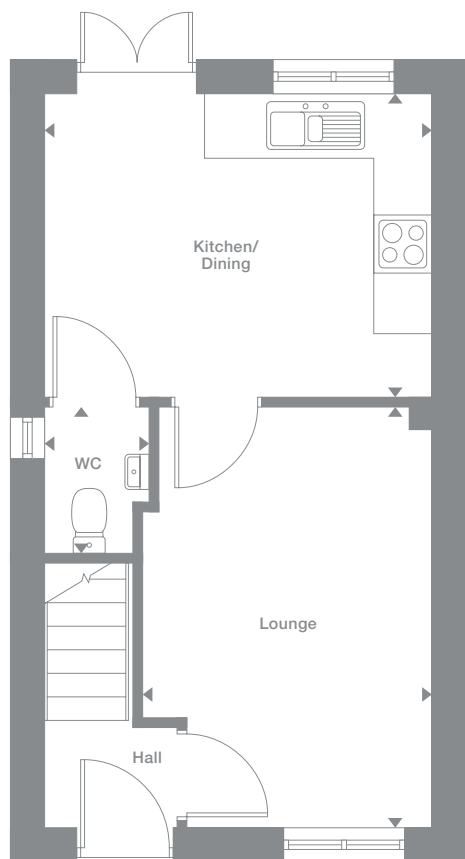
Denotes full height ceiling line

Denotes 1.500m height ceiling line

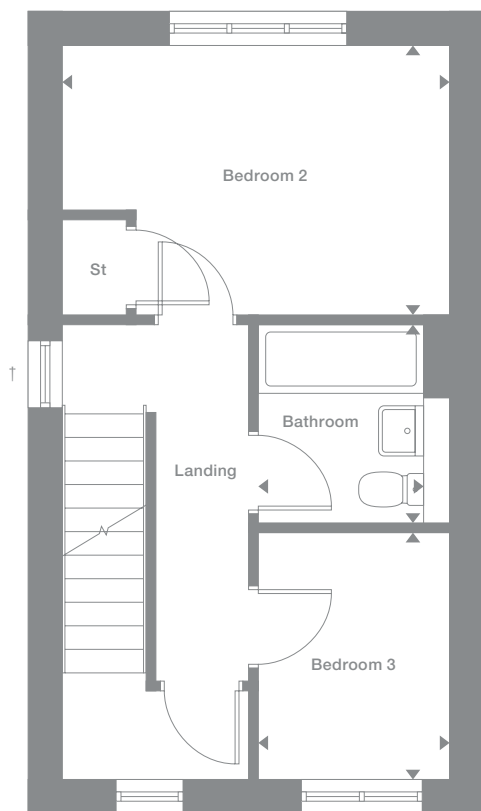
Plots may be a mirror image of the floor plans. Please see Development Sales Manager for details



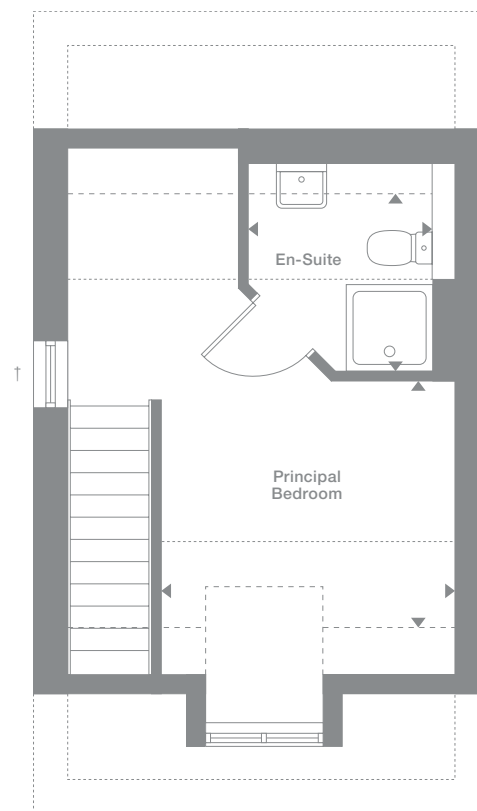
Ground Floor



First Floor



Second Floor



Photography represents typical Miller Homes' interiors and exteriors. All plans in this brochure are not drawn to scale and are for illustrative purposes only. Consequently, they do not form part of any contract. Room layouts are provisional and may be subject to alteration. Please refer to the 'Important Notices' section at the back of this brochure for more information.

Kingston

Overview
Both the lounge and the kitchen are dual aspect, with the bay window of the lounge and french doors in the dining area adding to the light, open ambience. One of the three bedrooms is also dual aspect, while the principal bedroom includes en-suite facilities.

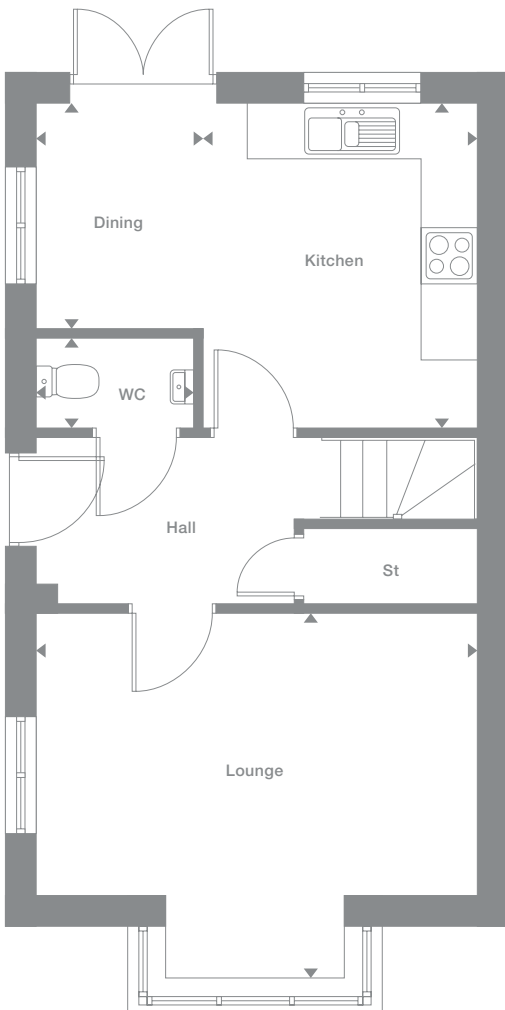
Ground Floor	First Floor
Lounge 4.68m x 3.91m 15'5" x 12'10"	Principal Bedroom 3.37m x 3.01m 11'1" x 9'11"
Kitchen 2.91m x 3.45m 9'7" x 11'4"	En-Suite 1.01m x 2.78m 3'4" x 9'2"
Dining 1.76m x 2.40m 5'10" x 7'11"	Bedroom 2 2.56m x 3.46m 8'5" x 11'4"
WC 1.67m x 0.96m 5'6" x 3'2"	Bedroom 3 2.02m x 3.46m 6'8" x 11'4"
	Bathroom 1.70m x 1.96m 5'7" x 6'5"

Floor Space
869 sq ft

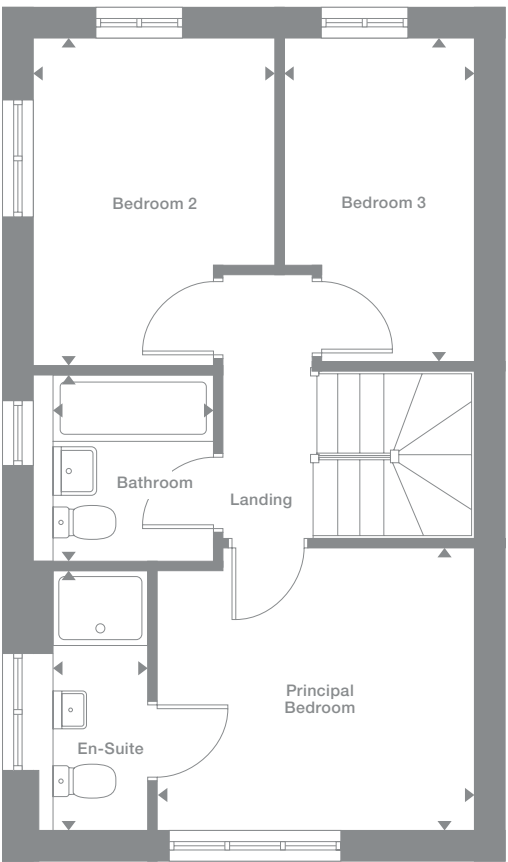
Plots may be a mirror image of the floor plans. Please see Development Sales Manager for details



Ground Floor



First Floor



how will you use your new home?

Photography represents typical Miller Homes' interiors and exteriors. All plans in this brochure are not drawn to scale and are for illustrative purposes only. Consequently, they do not form part of any contract. Room layouts are provisional and may be subject to alteration. Please refer to the 'Important Notices' section at the back of this brochure for more information.

Braxton

Overview
Both the lounge and the dining kitchen are dual aspect, with french doors enhancing the family space. Practical touches include a laundry, downstairs WC and generous storage space. The bright landing leads to the bathroom and three bedrooms, including an en-suite, dual aspect principal bedroom.

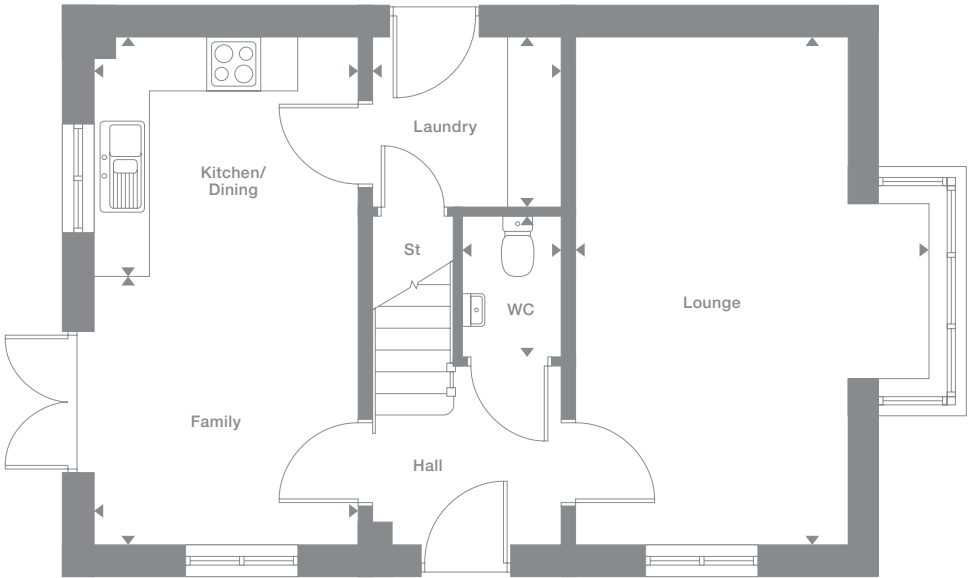
Ground Floor	First Floor
Lounge 3.69m x 5.58m 12'1" x 18'4"	Principal Bedroom 3.01m x 2.77m 9'11" x 9'1"
Kitchen/Dining 2.90m x 2.65m 9'6" x 8'9"	En-Suite 2.11m x 1.24m 6'11" x 4'1"
Laundry 2.09m x 1.88m 6'10" x 6'2"	Bedroom 2 2.95m x 3.28m 9'8" x 10'9"
Family 2.90m x 2.92m 9'6" x 9'7"	Bedroom 3 1.70m x 2.20m 5'7" x 7'3"
WC 1.09m x 1.55m 3'7" x 5'1"	Bathroom

Floor Space
996 sq ft

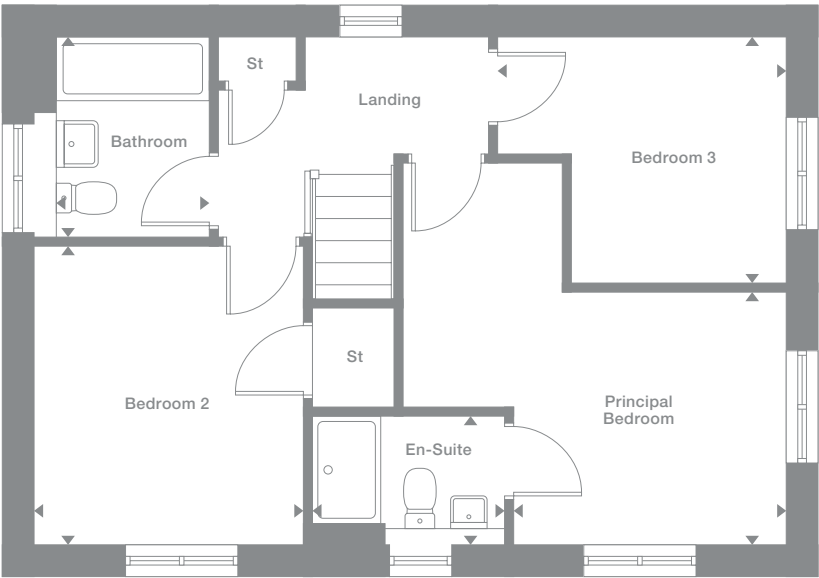
Plots may be a mirror image of the floor plans. Please see Development Sales Manager for details



Ground Floor



First Floor



Photography represents typical Miller Homes' interiors and exteriors. All plans in this brochure are not drawn to scale and are for illustrative purposes only. Consequently, they do not form part of any contract. Room layouts are provisional and may be subject to alteration. Please refer to the 'Important Notice' section at the back of this brochure for more information.

Overview

A traditional bay window dominates the dual aspect lounge, while the bright dining kitchen features french doors and a separate laundry. Accessed from a generously sized landing, the three bedrooms include a dual aspect principal suite. Every detail testifies to quality and attention to detail.

Ground Floor

- Lounge**
3.92m x 5.54m
12'11" x 18'2"
- Kitchen/Dining**
2.93m x 2.65m
9'8" x 8'9"
- Laundry**
2.09m x 1.92m
6'10" x 6'4"
- Family**
2.93m x 2.88m
9'8" x 9'6"
- WC**
1.08m x 1.44m
3'7" x 4'9"

First Floor

- Principal Bedroom**
3.40m x 3.12m
11'2" x 10'3"
- En-Suite**
1.77m x 2.06m
5'10" x 6'9"
- Bedroom 2**
2.99m x 3.31m
9'10" x 10'11"
- Bedroom 3**
2.60m x 2.33m
8'6" x 7'8"
- Bathroom**
1.70m x 2.13m
5'7" x 7'0"

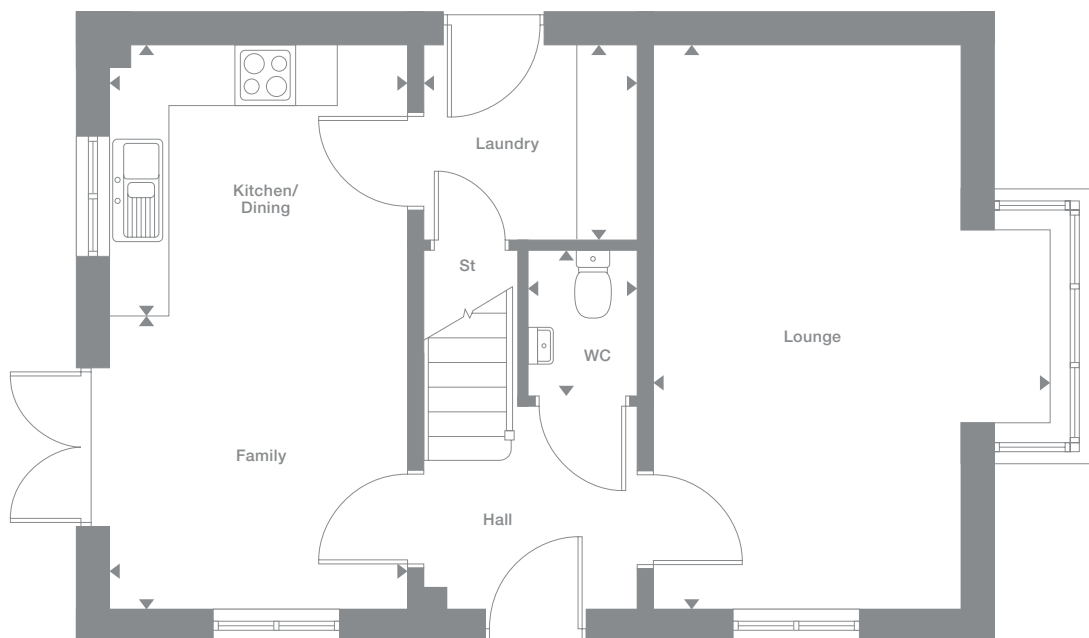
Floor Space

1,016 sq ft

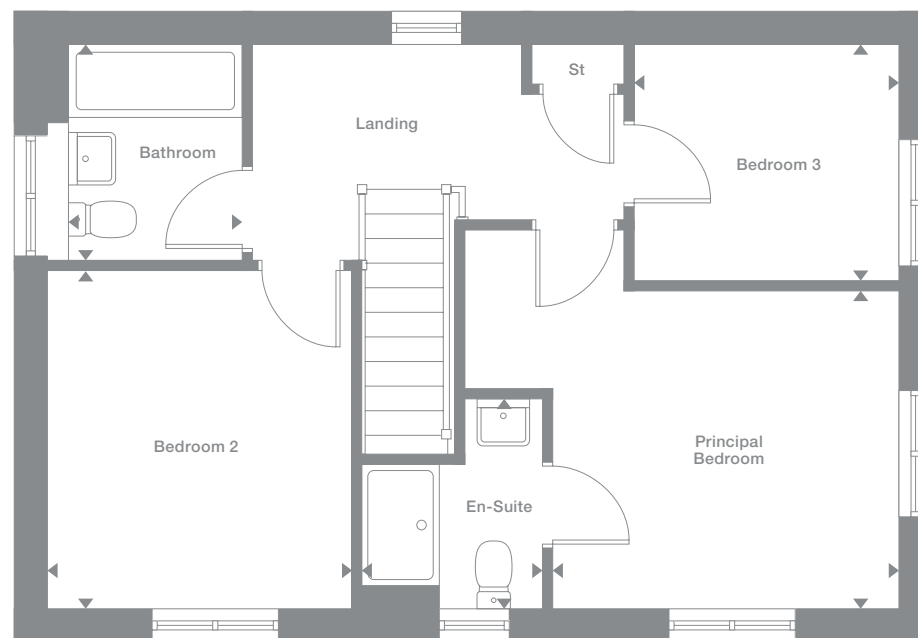
Plots may be a mirror image of the floor plans. Please see Development Sales Manager for details



Ground Floor



First Floor



Photography represents typical Miller Homes' interiors and exteriors. All plans in this brochure are not drawn to scale and are for illustrative purposes only. Consequently, they do not form part of any contract. Room layouts are provisional and may be subject to alteration. Please refer to the 'Important Notices' section at the back of this brochure for more information.

Asterwood

Overview

With its expertly planned work area, separate laundry, and dining area featuring french doors, the kitchen complements a comfortable lounge. The hall opens to a WC and a generously sized cupboard, while upstairs there are four bedrooms, one of them en-suite, and a family bathroom.

Ground Floor

Lounge
2.97m x 4.56m
9'9" x 15'0"

Kitchen/Dining/Family
5.48m x 3.68m
18'0" x 12'1"

Laundry
1.26m x 1.85m
4'2" x 6'1"

WC
0.95m x 1.82m
3'1" x 6'0"

First Floor

Principal Bedroom
2.84m x 3.84m
9'4" x 12'7"

En-Suite
2.45m x 1.18m
8'0" x 3'10"

Bedroom 2
2.54m x 3.49m
8'4" x 11'6"

Bedroom 3
2.45m x 3.10m
8'0" x 10'2"

Bedroom 4
2.93m x 2.01m
9'8" x 6'7"

Bathroom
1.70m x 2.05m
5'7" x 6'9"

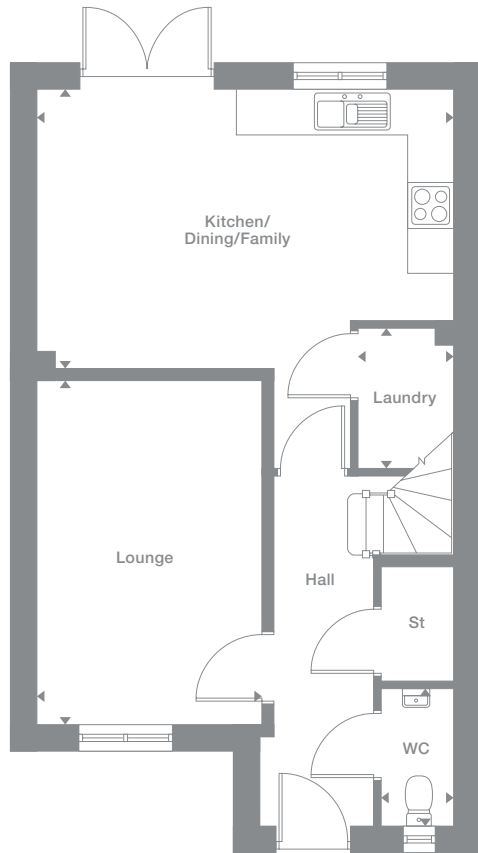
Floor Space

1,065 sq ft

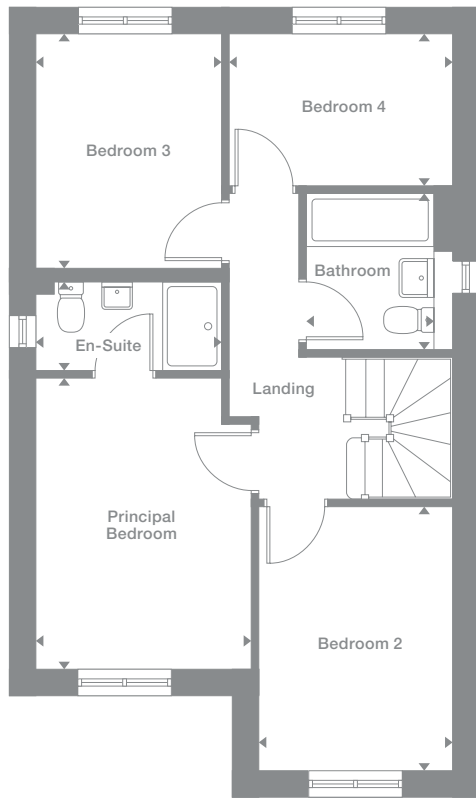
Plots may be a mirror image of the floor plans. Please see Development Sales Manager for details



Ground Floor



First Floor



Photography represents typical Miller Homes' interiors and exteriors. All plans in this brochure are not drawn to scale and are for illustrative purposes only. Consequently, they do not form part of any contract. Room layouts are provisional and may be subject to alteration. Please refer to the 'Important Notice' section at the back of this brochure for more information.

Kirkwood

Overview

Extending the full width of the home, the exciting kitchen, dining and family room presents a perfect setting for everyday life. The lounge incorporates a bay window, the bathroom includes a separate shower and one of the four bedrooms is en-suite with a dressing area.

Ground Floor

- Lounge**
2.95m x 4.43m
9'8" x 14'7"
- Kitchen**
2.86m x 2.68m
9'5" x 8'10"
- Laundry**
1.77m x 1.26m
5'10" x 4'2"
- Dining**
2.16m x 2.68m
7'1" x 8'10"
- Family**
3.14m x 2.36m
10'4" x 7'9"
- WC**
1.44m x 1.26m
4'9" x 4'2"

First Floor

- Principal Bedroom**
4.03m x 2.75m
13'3" x 9'0"
- En-Suite**
2.60m x 1.18m
8'6" x 3'10"
- Dressing**
2.60m x 1.42m
8'6" x 4'8"
- Bedroom 2**
2.95m x 3.91m
9'8" x 12'10"
- Bedroom 3**
3.04m x 2.87m
10'0" x 9'5"
- Bedroom 4**
2.60m x 3.94m
8'7" x 12'11"
- Bathroom**
2.33m x 2.87m
7'8" x 9'5"

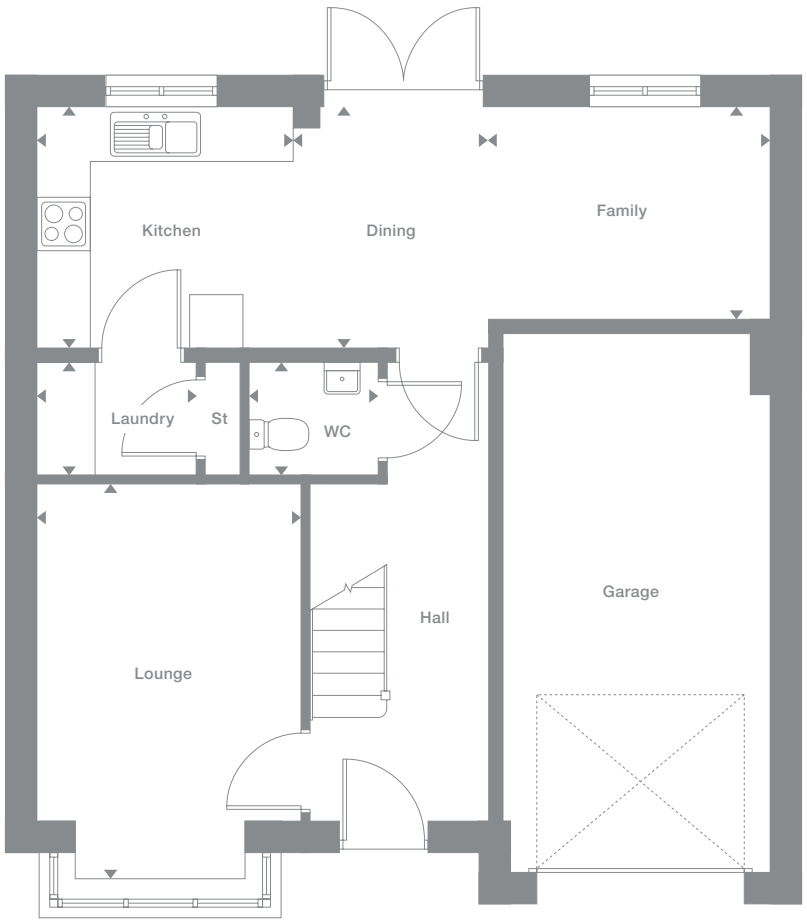
Floor Space

1,240 sq ft

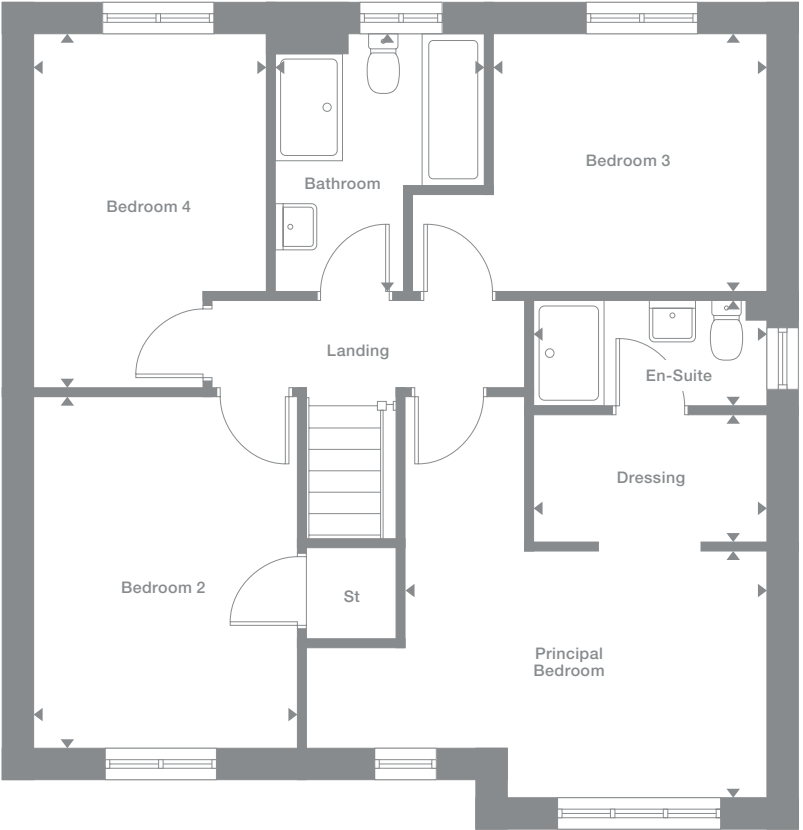
Plots may be a mirror image of the floor plans. Please see Development Sales Manager for details



Ground Floor



First Floor



Photography represents typical Miller Homes' interiors and exteriors. All plans in this brochure are not drawn to scale and are for illustrative purposes only. Consequently, they do not form part of any contract. Room layouts are provisional and may be subject to alteration. Please refer to the 'Important Notices' section at the back of this brochure for more information.

Blackwood

Overview

Behind its elegant façade, this is an immensely prestigious family home. Sharing the ground floor with a stylish lounge, the impressive kitchen and dining room offers garden access via french doors. The many practical features include a laundry, a walk-in hall cupboard and an en-suite principal bedroom.

Ground Floor

Lounge
3.00m x 4.59m
9'10" x 15'1"

Kitchen/Dining/Family
5.55m x 3.72m
18'3" x 12'3"

Laundry
1.26m x 1.88m
4'2" x 6'2"

WC
0.95m x 1.86m
3'1" x 6'1"

First Floor

Principal Bedroom
2.84m x 3.88m
9'4" x 12'9"

En-Suite
2.52m x 1.18m
8'3" x 3'10"

Bedroom 2
2.61m x 3.53m
8'7" x 11'7"

Bedroom 3
2.52m x 3.13m
8'3" x 10'4"

Bedroom 4
2.93m x 2.05m
9'8" x 6'9"

Bathroom
1.70m x 2.05m
5'7" x 6'9"

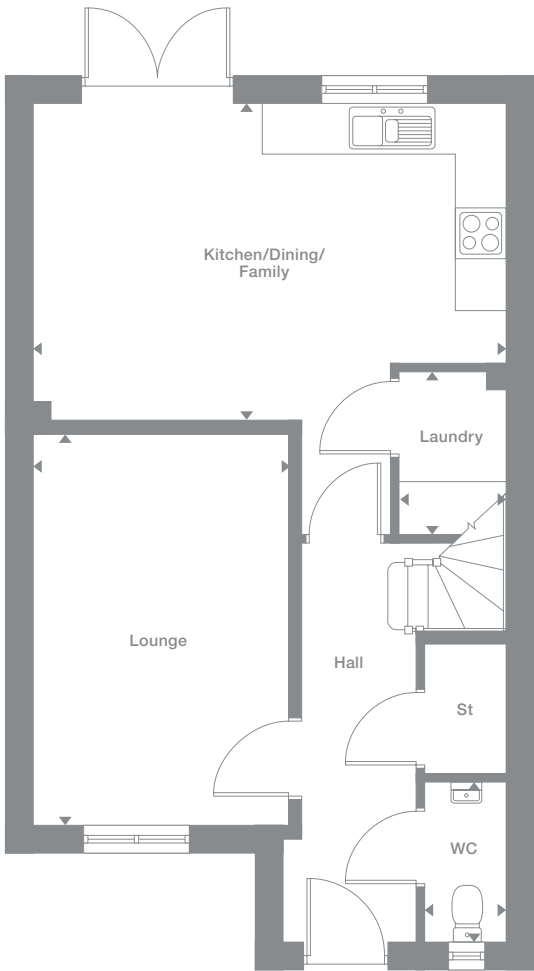
Floor Space

1,088 sq ft

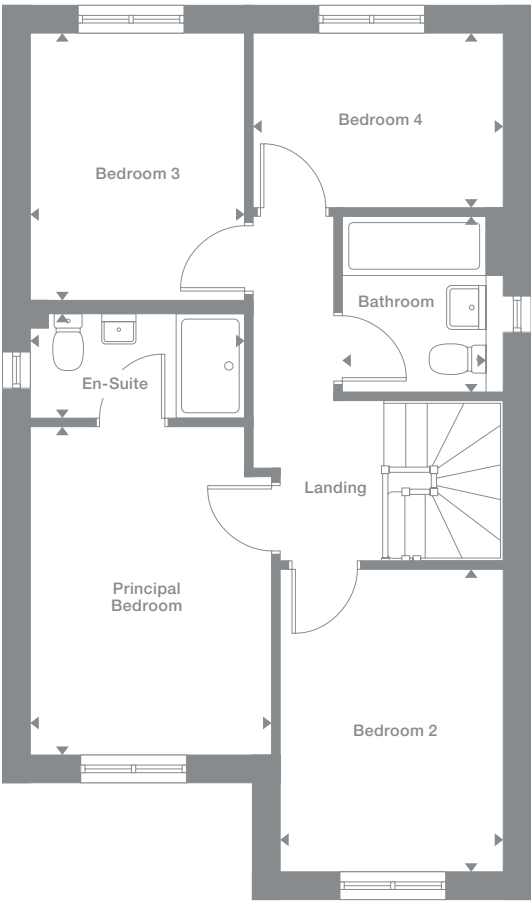
Plots may be a mirror image of the floor plans. Please see Development Sales Manager for details



Ground Floor



First Floor



Photography represents typical Miller Homes' interiors and exteriors. All plans in this brochure are not drawn to scale and are for illustrative purposes only. Consequently, they do not form part of any contract. Room layouts are provisional and may be subject to alteration. Please refer to the 'Important Notice' section at the back of this brochure for more information.

Maplewood

Overview

Dominated by a classic bay window, the lounge's elegant appeal complements the lively informality of the family dining kitchen, with its twin windows, french doors and separate laundry. The en-suite principal bedroom has a walk-through dressing area, and bedroom two includes a useful cupboard.

Ground Floor

Lounge
2.98m x 4.72m
9'10" x 15'6"

Kitchen
2.86m x 2.68m
9'5" x 8'10"

Laundry
1.76m x 1.26m
5'9" x 4'2"

Dining
2.23m x 2.68m
7'4" x 8'10"

Family
3.15m x 2.41m
10'4" x 7'11"

WC
1.44m x 1.26m
4'9" x 4'2"

First Floor

Principal Bedroom
4.06m x 2.82m
13'4" x 9'3"

Dressing
2.63m x 1.38m
8'8" x 4'7"

En-Suite
2.63m x 1.18m
8'8" x 3'10"

Bedroom 2
2.98m x 3.82m
9'10" x 12'6"

Bedroom 3
2.54m x 4.10m
8'4" x 13'6"

Bedroom 4
3.06m x 2.91m
10'1" x 9'7"

Bathroom
2.45m x 2.91m
8'1" x 9'7"

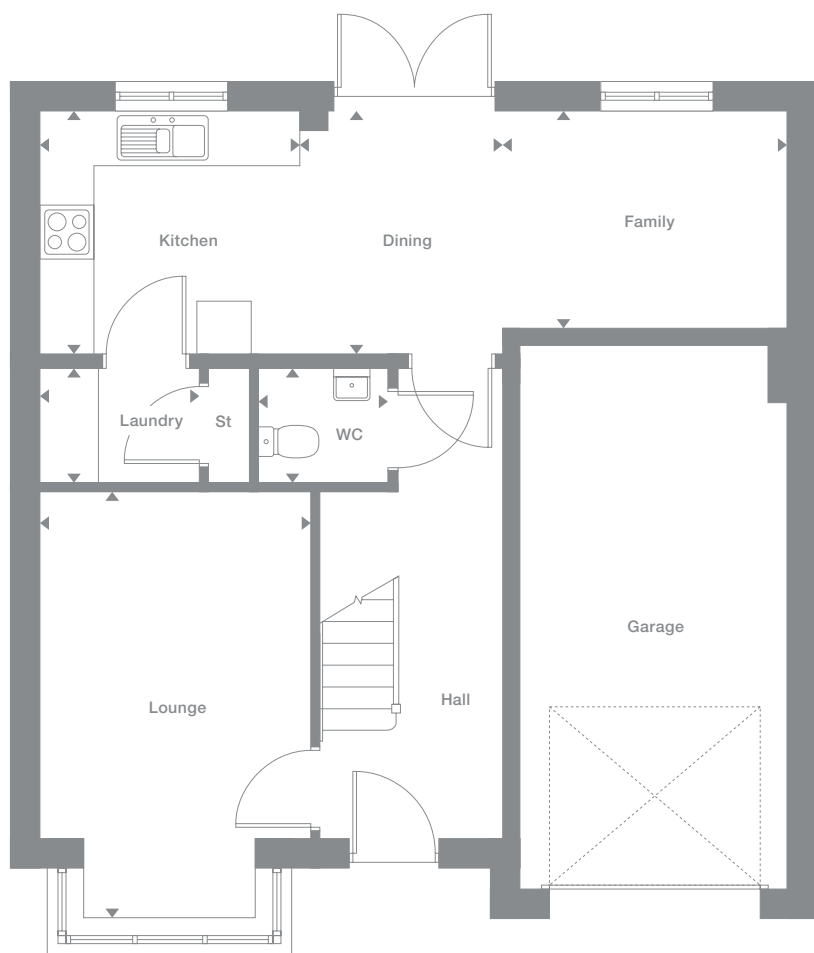
Floor Space

1,269 sq ft

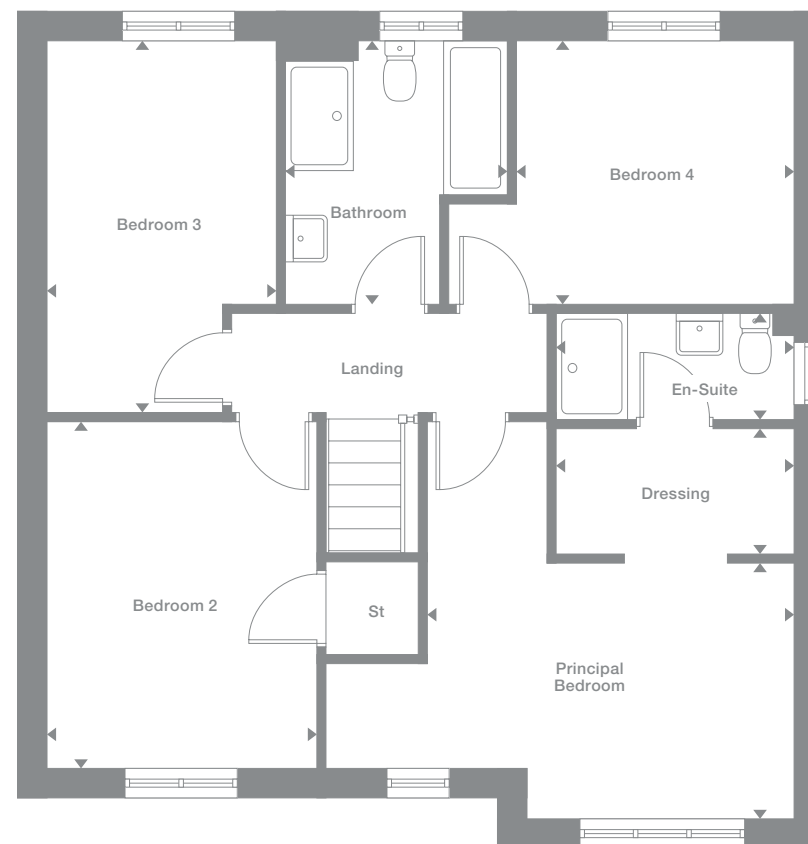


Plots may be a mirror image of the floor plans. Please see Development Sales Manager for details

Ground Floor



First Floor



Photography represents typical Miller Homes' interiors and exteriors. All plans in this brochure are not drawn to scale and are for illustrative purposes only. Consequently, they do not form part of any contract. Room layouts are provisional and may be subject to alteration. Please refer to the 'Important Notices' section at the back of this brochure for more information.

Norwood

Overview

From the laundry that leaves the kitchen and dining room free for enjoying family time to the stylish lounge and practical study, this is a comfortable, adaptable home. A gallery landing leads to four bedrooms, one of them en-suite, and a bathroom with separate shower.

Ground Floor

Lounge
3.58m x 5.15m
11'9" x 16'11"

Kitchen
3.36m x 2.95m
11'0" x 9'8"

Laundry
2.06m x 1.66m
6'9" x 5'5"

Family/Dining
3.71m x 3.84m
12'2" x 12'7"

Study
2.06m x 1.96m
6'9" x 6'5"

WC
2.06m x 1.12m
6'9" x 3'8"

First Floor

Principal Bedroom
3.58m x 3.17m
11'9" x 10'5"

En-Suite
2.31m x 1.30m
7'7" x 4'3"

Bedroom 2
3.65m x 2.73m
12'0" x 9'0"

Bedroom 3
3.40m x 3.15m
11'2" x 10'4"

Bedroom 4
3.32m x 2.72m
10'11" x 8'11"

Bathroom
2.57m x 1.99m
8'5" x 6'6"

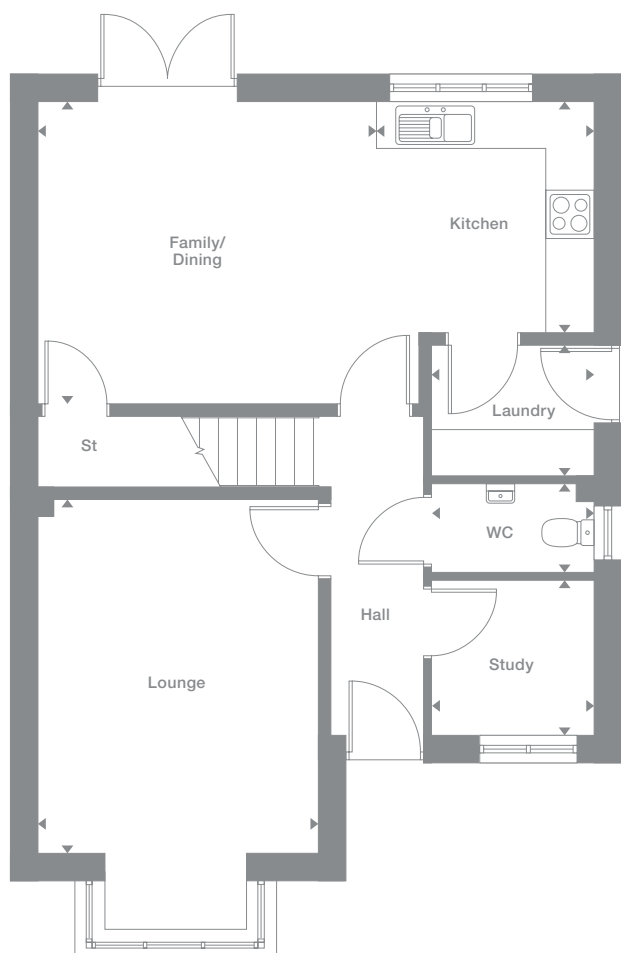
Floor Space

1,344 sq ft

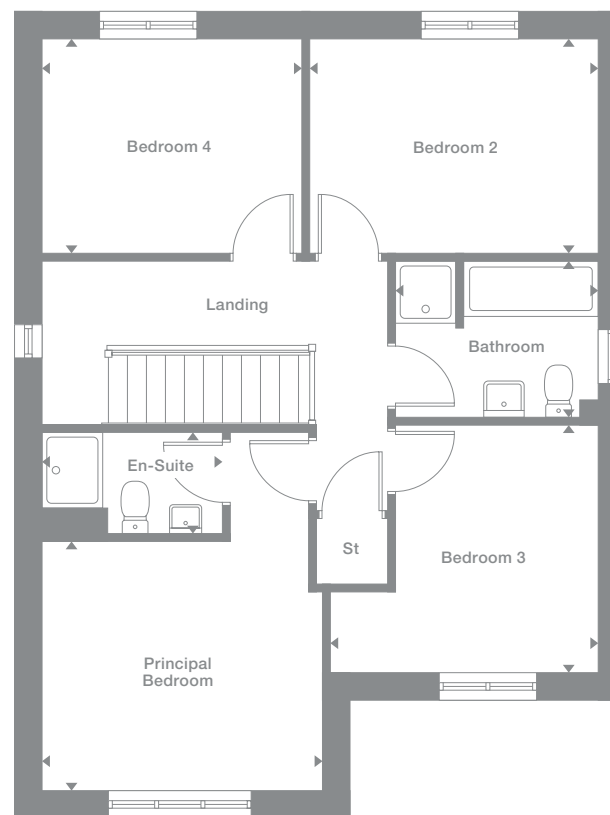
Plots may be a mirror image of the floor plans. Please see Development Sales Manager for details



Ground Floor



First Floor



Photography represents typical Miller Homes' interiors and exteriors. All plans in this brochure are not drawn to scale and are for illustrative purposes only. Consequently, they do not form part of any contract. Room layouts are provisional and may be subject to alteration. Please refer to the 'Important Notices' section at the back of this brochure for more information.

Beauwood

Overview

From the bay-windowed lounge to the en-suite bedroom, this is a superb, feature-filled home. The kitchen, the study or family room and two of the four bedrooms are all dual aspect, french doors enhance the open-plan kitchen, and the family bathroom features a separate shower.

Ground Floor

- Lounge**
4.10m x 4.09m
13'5" x 13'5"
- Kitchen**
3.48m x 3.96m
11'5" x 13'0"
- Laundry**
2.12m x 1.76m
7'0" x 5'9"
- Dining**
3.48m x 2.83m
11'5" x 9'4"
- Study/Family**
3.42m x 2.61m
11'3" x 8'7"
- WC**
1.07m x 1.55m
3'6" x 5'1"

First Floor

- Principal Bedroom**
3.53m x 3.41m
11'7" x 11'2"
- En-Suite**
2.04m x 1.79m
6'8" x 5'11"
- Bedroom 2**
3.48m x 3.30m
11'5" x 10'10"
- Bedroom 3**
2.42m x 3.39m
8'0" x 11'2"
- Bedroom 4**
3.56m x 3.28m
11'8" x 10'9"
- Bathroom**
3.14m x 1.70m
10'4" x 5'7"

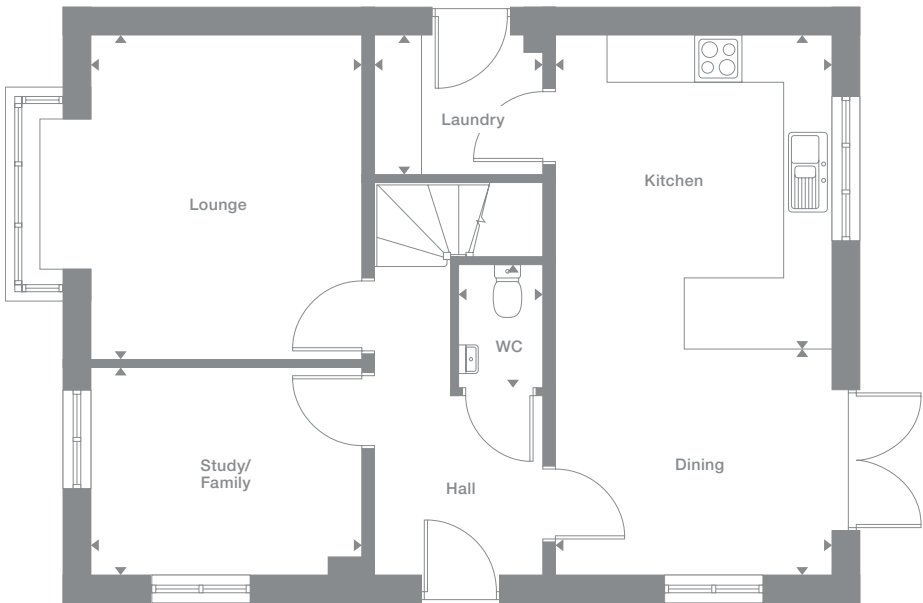
Floor Space

1,379sq ft

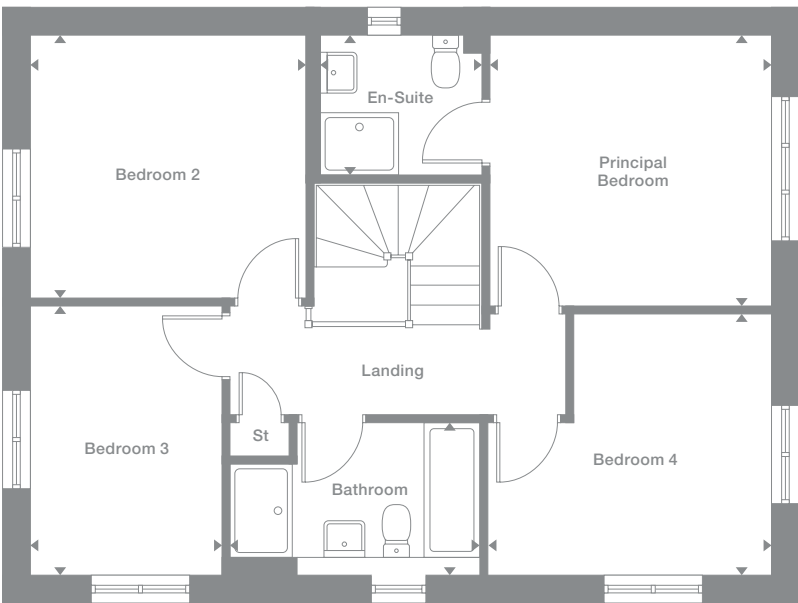
Plots may be a mirror image of the floor plans. Please see Development Sales Manager for details



Ground Floor



First Floor



Photography represents typical Miller Homes' interiors and exteriors. All plans in this brochure are not drawn to scale and are for illustrative purposes only. Consequently, they do not form part of any contract. Room layouts are provisional and may be subject to alteration. Please refer to the 'Important Notices' section at the back of this brochure for more information.

Oakwood

Overview

The striking lounge, with its traditional bay window, and the flexible family dining kitchen with feature french doors, present an ideal setting for relaxed entertaining. Premium features include a laundry room, a study and a superb gallery landing. One of the four bedrooms is en-suite.

Ground Floor

- Lounge**
3.65m x 5.44m
12'0" x 17'10"
- Kitchen**
3.36m x 2.99m
11'0" x 9'10"
- Laundry**
2.08m x 1.66m
6'10" x 5'5"
- Family/Dining**
3.78m x 3.88m
12'5" x 12'9"
- Study**
2.08m x 2.01m
6'10" x 6'7"
- WC**
2.08m x 1.13m
6'10" x 3'9"

First Floor

- Principal Bedroom**
3.65m x 3.21m
12'0" x 10'6"
- En-Suite**
2.40m x 1.30m
7'11" x 4'3"
- Bedroom 2**
3.79m x 2.75m
12'5" x 9'1"
- Bedroom 3**
3.26m x 2.74m
10'8" x 9'0"
- Bedroom 4**
3.40m x 3.18m
11'2" x 10'5"
- Bathroom**
2.56m x 2.00m
8'5" x 6'7"

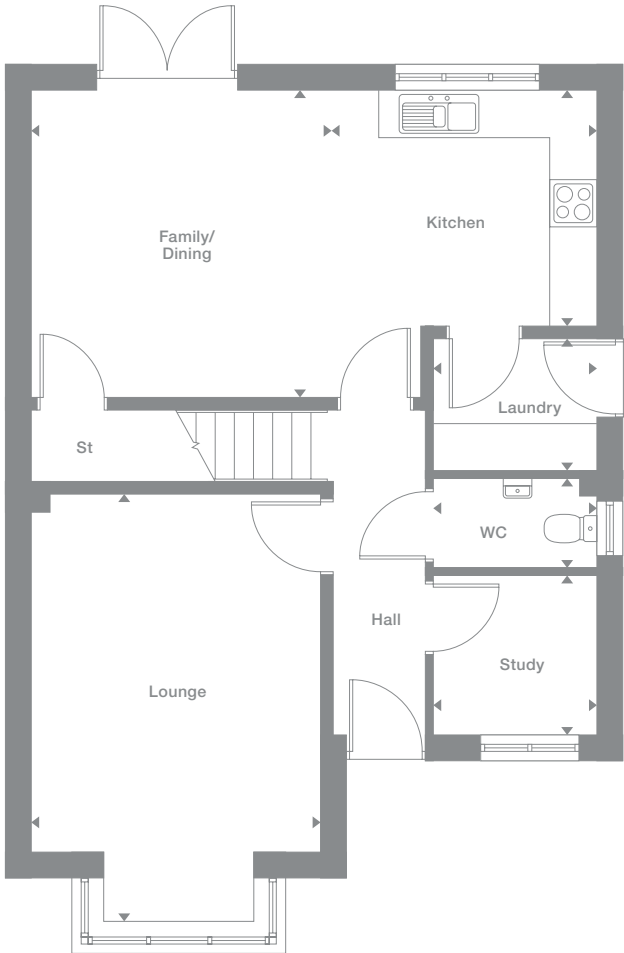
Floor Space

1,388 sq ft

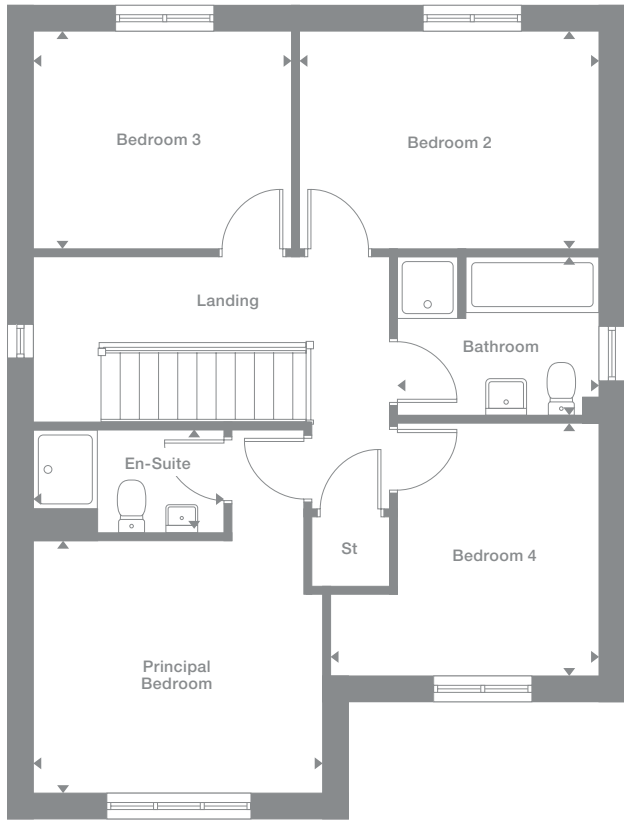
Plots may be a mirror image of the floor plans. Please see Development Sales Manager for details



Ground Floor



First Floor



Photography represents typical Miller Homes' interiors and exteriors. All plans in this brochure are not drawn to scale and are for illustrative purposes only. Consequently, they do not form part of any contract. Room layouts are provisional and may be subject to alteration. Please refer to the 'Important Notices' section at the back of this brochure for more information.

Baywood

Overview

Dual aspect windows in the study, the kitchen and two bedrooms fill this fascinating home with natural light. The ambience is enhanced by the lounge bay window and french doors in the dining area. The en-suite principal bedroom is accessed via a feature gallery landing.

Ground Floor

- Lounge**
4.36m x 4.16m
14'4" x 13'8"
- Kitchen**
3.51m x 3.96m
11'6" x 13'0"
- Laundry**
2.12m x 1.76m
7'0" x 5'9"
- Dining**
3.51m x 2.90m
11'6" x 9'6"
- Study**
2.32m x 2.61m
7'7" x 8'7"
- WC**
1.04m x 1.45m
3'5" x 4'9"

First Floor

- Principal Bedroom**
3.57m x 3.68m
11'9" x 12'1"
- En-Suite**
2.04m x 1.76m
6'8" x 5'9"
- Bedroom 2**
3.51m x 3.23m
11'7" x 10'7"
- Bedroom 3**
2.47m x 2.53m
8'1" x 11'7"
- Bedroom 4**
3.51m x 3.08m
11'6" x 10'1"
- Bathroom**
3.21m x 1.70m
10'7" x 5'7"

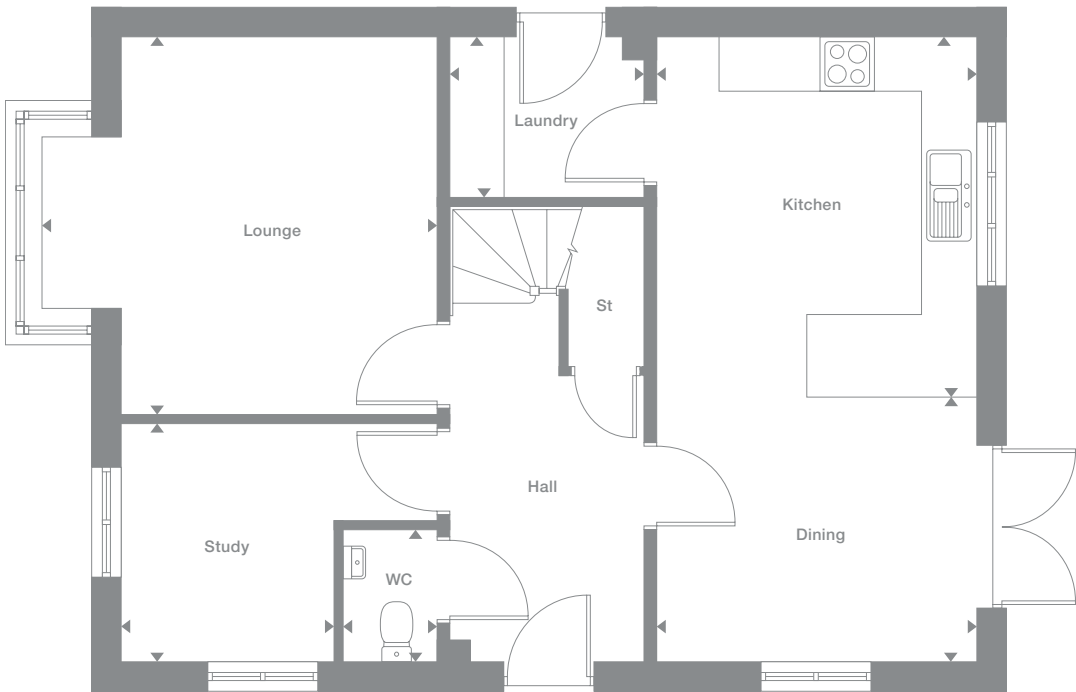
Floor Space

1408 sq ft

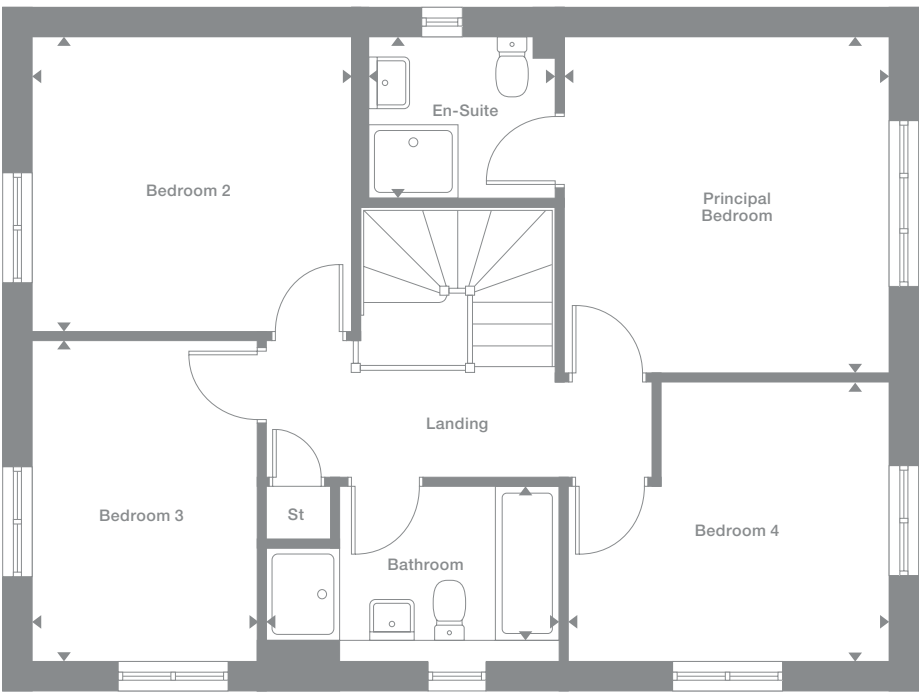
Plots may be a mirror image of the floor plans. Please see Development Sales Manager for details



Ground Floor



First Floor



Photography represents typical Miller Homes' interiors and exteriors. All plans in this brochure are not drawn to scale and are for illustrative purposes only. Consequently, they do not form part of any contract. Room layouts are provisional and may be subject to alteration. Please refer to the 'Important Notices' section at the back of this brochure for more information.

The Miller Difference

The Miller Difference
Every home we build is the start of an adventure. For more than 85 years we've watched people stamp their individual personalities on the homes we build. What we create is your starting point. Our job is to make sure it's the best one possible.

Shaped around you
For more than three generations, we've been listening to our customers. We know what you expect: the highest quality materials, the most skilled workmanship, ready to be shaped around your lifestyle.

Built on trust
Figures and statistics matter. We have, for example, a five star rating for Customer Satisfaction, the best possible, from the Home Builders Federation.

Even more important, though, is the feedback we get from our customers. After we've been with them on the journey from their first enquiry to settling into their new home, well over 90% say they would recommend us. That's the real measure of the trust they place in us.

Helping where we can
You might already have a clear picture of life in your new home. Or it might be a blank canvas. Either way, getting there is an exciting journey of discovery. And we're here to help.

From the first time you contact us, whether by phone, video call or a tour of a show home, we'll be listening carefully. Only you know what you want, but we'll be working with you to achieve it.

And we'll still be on hand, ready to help, long after you move in, quietly sharing your pride and satisfaction.

Pushing up standards
From beautiful locations and superb architectural design to meticulous construction work and exceptional finishes, our expertise is widely acknowledged. Our award-winning developments embrace state-of-the-art technologies and green thinking, but we never lose sight of the importance of craftsmanship. Every step is subject to rigorous Quality Assurance checks, and we reward our highly trained teams for safe and careful practice.

A smooth customer journey
Our award-winning service reflects the same high standards. As we guide you through your choices, decades of experience inform every step. So you can relax and enjoy the journey, knowing you have all the information you need.

With you every step of the way
After meeting your Development Sales Manager, who will help you choose and buy your new home, you'll be introduced to your Site Manager, who will be responsible for every aspect of the building work. They'll both be happy to answer any questions you have.

Fully involved
Your new home will quickly be moulded to your personal choices. So will our service. Once you tell us how you want to keep in touch, whether by phone, text, email, our custom designed app or via our website, that's how we'll keep you regularly updated and informed. You'll be able to access all the records of meetings, and see what happens next.

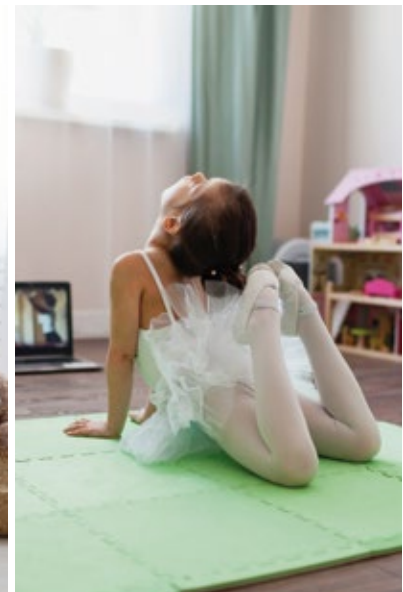
Make it your own
Even before you move in, there's the excitement of planning your interior. Choosing tiles and worktops, making decisions about appliances. We'll help wherever we can. Our Visualiser, for example, can help you make selections online then see them for real in the Sales Centre. Already, it's becoming your own, personal, space.

At a safe time during building, we'll invite you to visit your new home for a Progress Meeting where you can see the craftsmanship and attention to detail for yourself before it's covered up by fittings and finishes.

A place to grow
For us, the mark of success is seeing every home become unique, an individual reflection of the people who live there, and watching it become part of a thriving community.

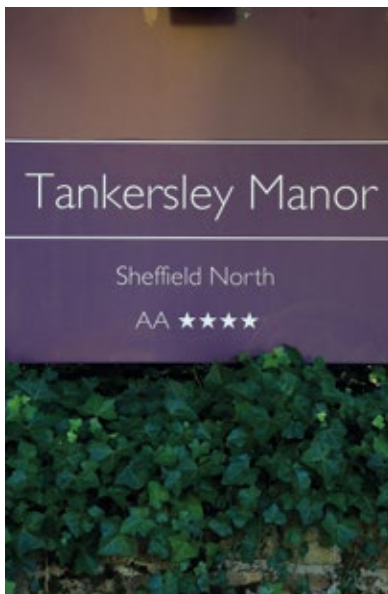
By creating sustainable homes, in sustainable communities, we're helping to build a sustainable future for everyone. Including ourselves.

your home
your way...



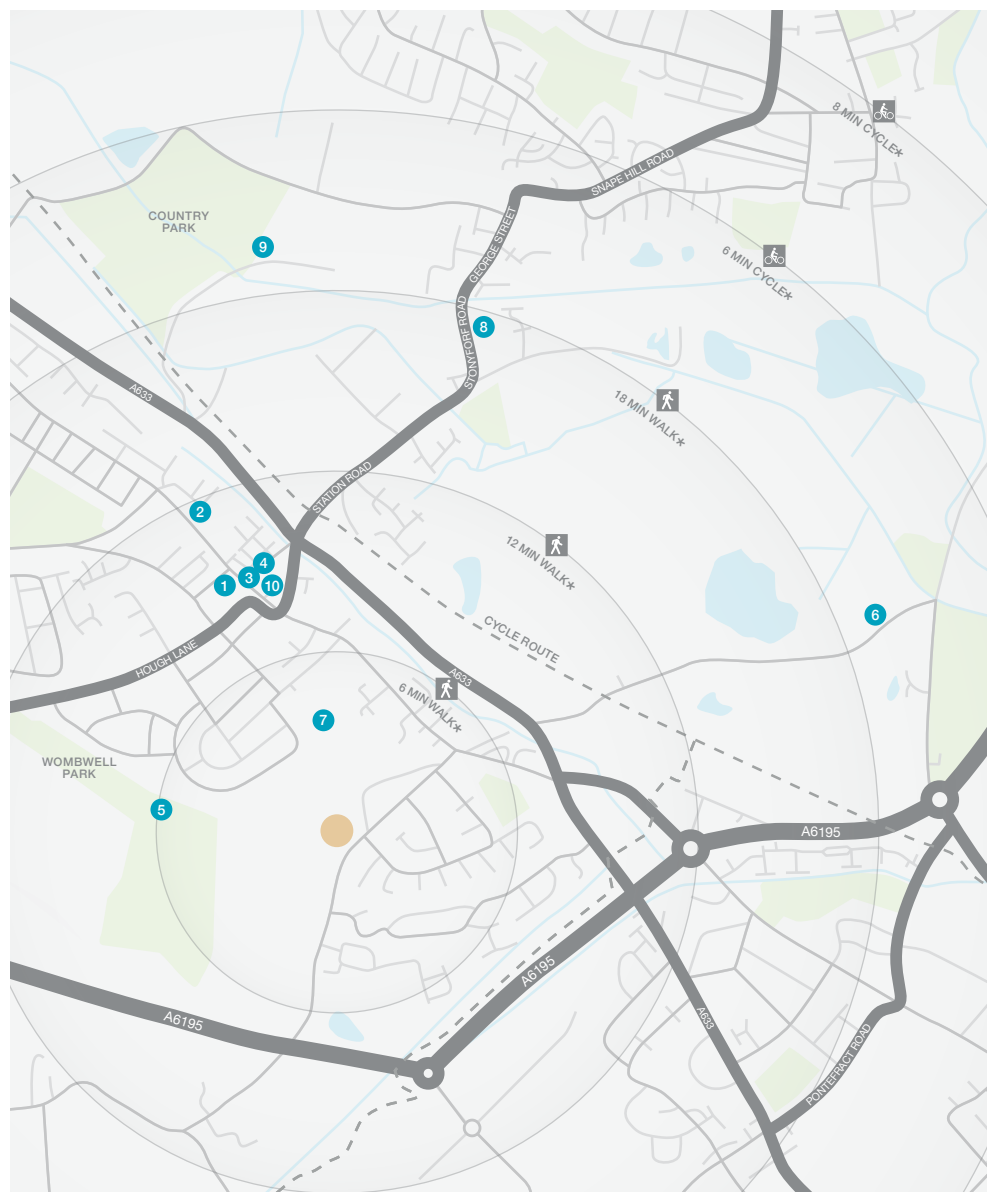
The town is exceptionally rich in outdoor attractions, from the Park and Skate Park beside the development to the River Dearne and two extensive Nature Reserves flanking Broomhill Park to the east. The wildlife and forest trails in Wombwell and Dovecliffe Woods, the paths along the area's rivers and canals and Manvers Lake, with its boat club, are all in easy reach, and the TransPennine Trail passes half a mile from The Fairways.

Park Street Primary School is only a few minutes' walk from The Fairways, and there is an RC Primary School, St Michael & All Angels, a little over a mile away. Both are assessed as 'Good' by Ofsted. Shaw Childcare, for pre-school care, is also close by, and Wombwell's secondary school, Netherwood Academy, is within approximately 20 minutes' walk. Chapelfield Medical Centre is the nearest of Wombwell's two GP Practices, and there are dental surgeries and opticians in the town centre.



Useful Contacts

When you leave the car at home and explore the local area by foot or bicycle, you get to know it so much better. And by using local shops and services, you'll help to keep the neighbourhood vibrant and prosperous. Every place has its own personality, and once you move in you'll soon find your favourite walks, and the shops you like best. As a starting point this map shows some of the most useful features and services within a short stroll or bike ride.



- 1 Rowlands Pharmacy
5 George Street
01226 753 355
- 2 Wombwell Post Office
56 High Street
10226 270 392
- 3 The Old Town Hall
4 High Street
01226 984 466
- 4 Wombwell Library
Station Road
01226 733 555
- 5 Hillies Golf Course
19 Wentworth View
01226 754 433
- 6 Unique Leisure
Swimming Pool
191 Everill Gate
01226 338 384
- 7 Wombwell Park Street
Primary School
Park Street
01226 0HS
- 8 St Michael & All Angels'
Primary School
Stonyford Road
01226 752 120
- 9 Netherwood Academy
Dove Valley Way
01226 272 000
- 10 Chapelfield Medical Centre
Mayflower Way
01226 752 361

* Times stated are averages based on approximate distances and would be dependent on the route taken.

Based on:
0.5km = 5 to 7 mins walk
1.0km = 10 to 14 mins walk
1.5km = 15 to 21 mins walk
2.0km = 5 to 8 mins cycle
2.5km = 6 to 10 mins cycle



How to find us

Please see millerhomes.co.uk for development opening times or call 03308 280 583

From Barnsley
From the Alhambra Roundabout, join Sheffield Road for 175 yards then turn right, joining the A635 for Doncaster. At Stairfoot Roundabout take the third exit, for Rotherham. After a mile and a half, at White Rose Roundabout take the second exit, then stay on the A633 through Netherwood and Station Road Roundabouts. At the next roundabout take the third exit, entering Wath Road. Three hundred yards on, turn left into Lundhill Road and, after 350 yards, The Fairways is on the right.

From M1 junction 36
Leave the M1 at junction 36 and from Tankersley Roundabout follow signs for Doncaster. Stay on the A6195 for around four and a half miles, through a series of roundabouts, then at Wath Road Roundabout take the first exit, for Wombwell. Go straight on at the next roundabout, then 300 yards on turn left into Lundhill Road. After 350 yards, The Fairways is on the right.

Sat Nav: S73 ORH



The homes we build are the foundations of sustainable communities that will flourish for generations to come. We work in harmony with the natural environment, protecting and preserving it wherever we can. With our customers, colleagues and partners, we strive to promote better practices and ways of living. We're playing our part in making the world A Better Place.

a better place®



Registered Developer

Important Notice:
Although every care has been taken to ensure the accuracy of all the information given, the contents do not form part of any contract, or constitute a representation or warranty, and, as such, should be treated as a guide only. Interested parties should check with the Development Sales Manager and confirm all details with their solicitor. The developer reserves the right to amend the specification, as necessary, without prior notice, but to an equal or higher standard. Please note that items specified in literature and showhomes may depict appliances, fittings and decorative finishes that do not form part of the standard specification. The project is a new development which is currently under construction. Measurements provided have not been surveyed on-site. The measurements have been taken from architect's plans, and, as such, may be subject to variation during the course of construction. Not all the units described have been completed at the time of going to print and measurements and dimensions should be checked with the Development Sales Manager and confirmed with solicitors.

the place to be®

Why Miller Homes?

We've been building homes since 1934, that's three generations of experience. We've learned a lot about people and that's made a big difference to what we do and how we do it.

We're enormously proud of the homes we build, combining traditional craftsmanship with new ideas like low carbon technologies. The big difference is that we don't stop caring once we've finished the building, or when we've sold the house, or even once you've moved in. We're there when you need us, until you're settled, satisfied and inviting your friends round.



5 stars for customer satisfaction

Development

Opening Times

Please see millerhomes.co.uk for development opening times or call 03308 280 583

Sat Nav: S73 0RH

millerhomes.co.uk

millerhomes

the place to be®