



Tiptree

Our homes

4 bedroom



The St Clement



The Damson



The Wilkin



Affordable Housing



Meadowsweet Way





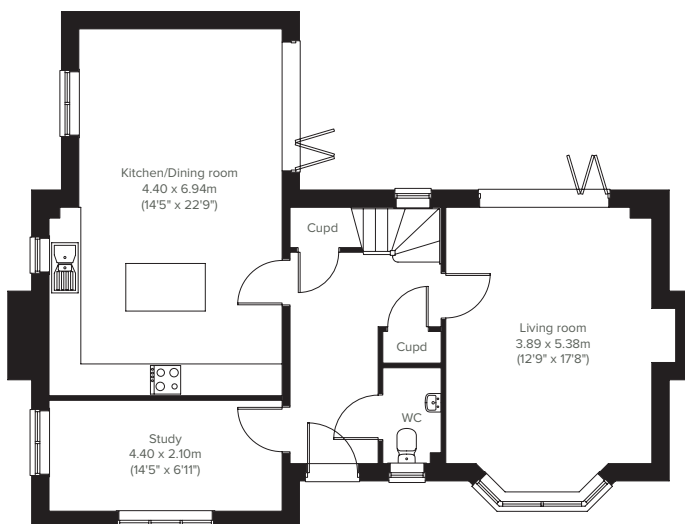


4 bedroom home

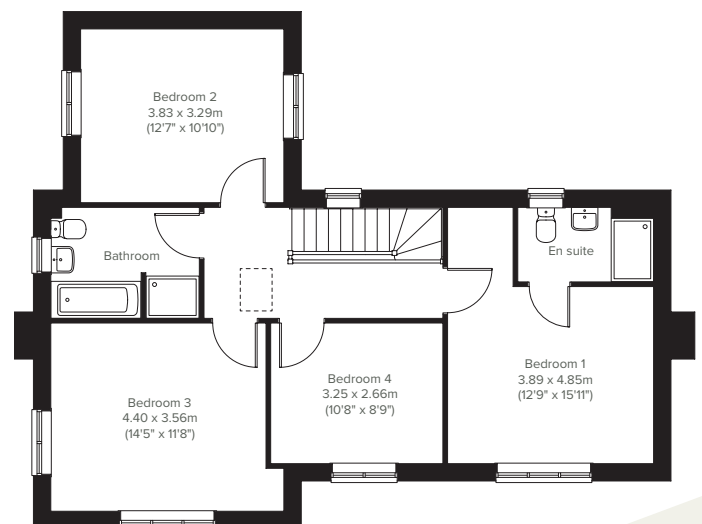
The St Clement



A perfectly-proportioned detached home, the St Clement's bright kitchen/dining room with bi-fold doors to the garden, is perfect for spending time as a family and for entertaining. There's also an equally impressive living room with bi-fold doors and a bay window, a downstairs WC, two cupboards and handy dual-aspect study. Upstairs there are four bedrooms - bedroom one with an en suite - and a modern family-sized bathroom.



GROUND FLOOR



1ST FLOOR

Please note that elevation treatments and window/door positions may vary from plot to plot. Plot specific information will be confirmed on your reservation check list.

This information is for guidance only and does not form any part of any contract or constitute a warranty. Illustrations are of typical elevations and may vary. Floor plans are not drawn to scale and window positions may vary. Room dimensions are subject to a +/- 50mm (2") tolerance and are based on the maximum dimensions in each room. Please consult your sales advisor on site for specific elevations, room dimensions and external finishes. The EPC ratings are estimated and vary between home types, orientation and developments.

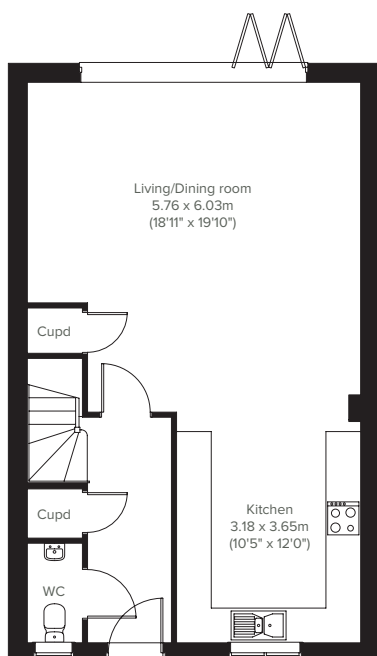


4 bedroom home

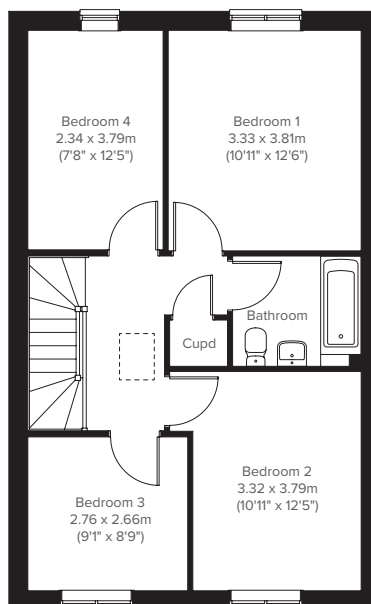
The Damson



The Damson features a generously-sized and stylish open plan kitchen/dining/living room that benefits from bi-fold doors to the garden. There are also handy storage cupboards and a convenient downstairs WC. Upstairs there are four bedrooms, a modern family bathroom and storage cupboard to the landing.



GROUND FLOOR



1ST FLOOR

Please note that elevation treatments and window/door positions may vary from plot to plot. Plot specific information will be confirmed on your reservation check list.

This information is for guidance only and does not form any part of any contract or constitute a warranty. Illustrations are of typical elevations and may vary. Floor plans are not drawn to scale and window positions may vary. Room dimensions are subject to a +/- 50mm (2") tolerance and are based on the maximum dimensions in each room. Please consult your sales advisor on site for specific elevations, room dimensions and external finishes. The EPC ratings are estimated and vary between home types, orientation and developments.

PEA: B

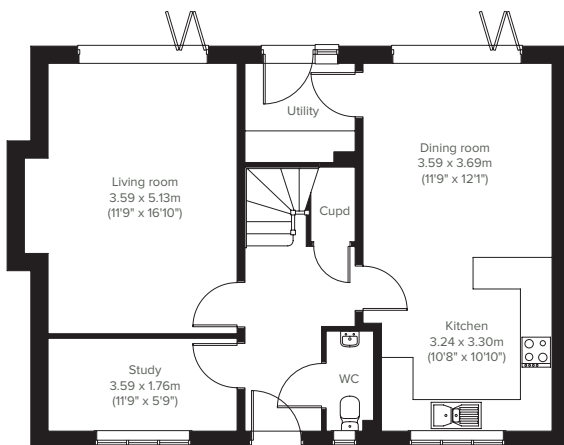


The Wilkin

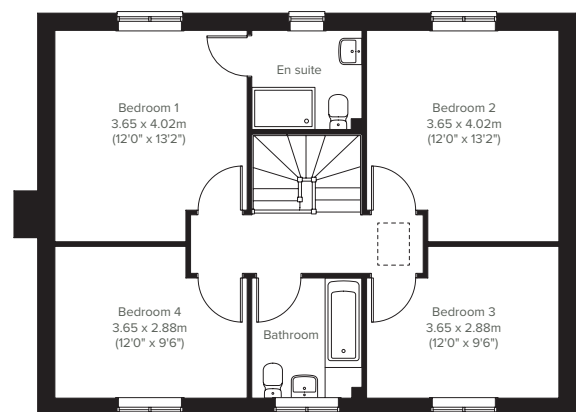
4 bedroom home



The Wilkin is a beautifully designed four-bedroom home, perfect for modern family living. The ground floor offers a spacious living room and impressive kitchen/dining room with bi-fold doors, creating the ideal space for relaxing and entertaining. A downstairs study, handy WC and utility room add extra convenience. Upstairs, four well-proportioned bedrooms provide plenty of space for the whole family, with bedroom one featuring its own en suite.



GROUND FLOOR



1ST FLOOR

Please note that elevation treatments and window/door positions may vary from plot to plot. Plot specific information will be confirmed on your reservation check list.

This information is for guidance only and does not form any part of any contract or constitute a warranty. Illustrations are of typical elevations and may vary. Floor plans are not drawn to scale and window positions may vary. Room dimensions are subject to a +/- 50mm (2") tolerance and are based on the maximum dimensions in each room. Please consult your sales advisor on site for specific elevations, room dimensions and external finishes. The EPC ratings are estimated and vary between home types, orientation and developments.