



VODION

HACKNEY | E3

1 & 2 bedroom apartments

Available with Shared Ownership

**SOUTHERN
HOUSING**

new homes

WELCOME TO

INSPIRED LIVING TRANSFORMED

HACKNEY WICK

HACKNEY | E3

MOVING WITH THE TIMES

1 & 2 bedroom apartments available for sale at Vodion, in Hackney Wick. Climb the property ladder much sooner with Shared Ownership, and embrace contemporary living in the heart of London's East End.

Vodion offers residents easy access into central London for commuting and leisure, and is just a short walk away from the River Lea and the open green spaces of the Queen Elizabeth Olympic Park and Victoria Park. Find your dream home in one of London's most sought-after rejuvenated areas.

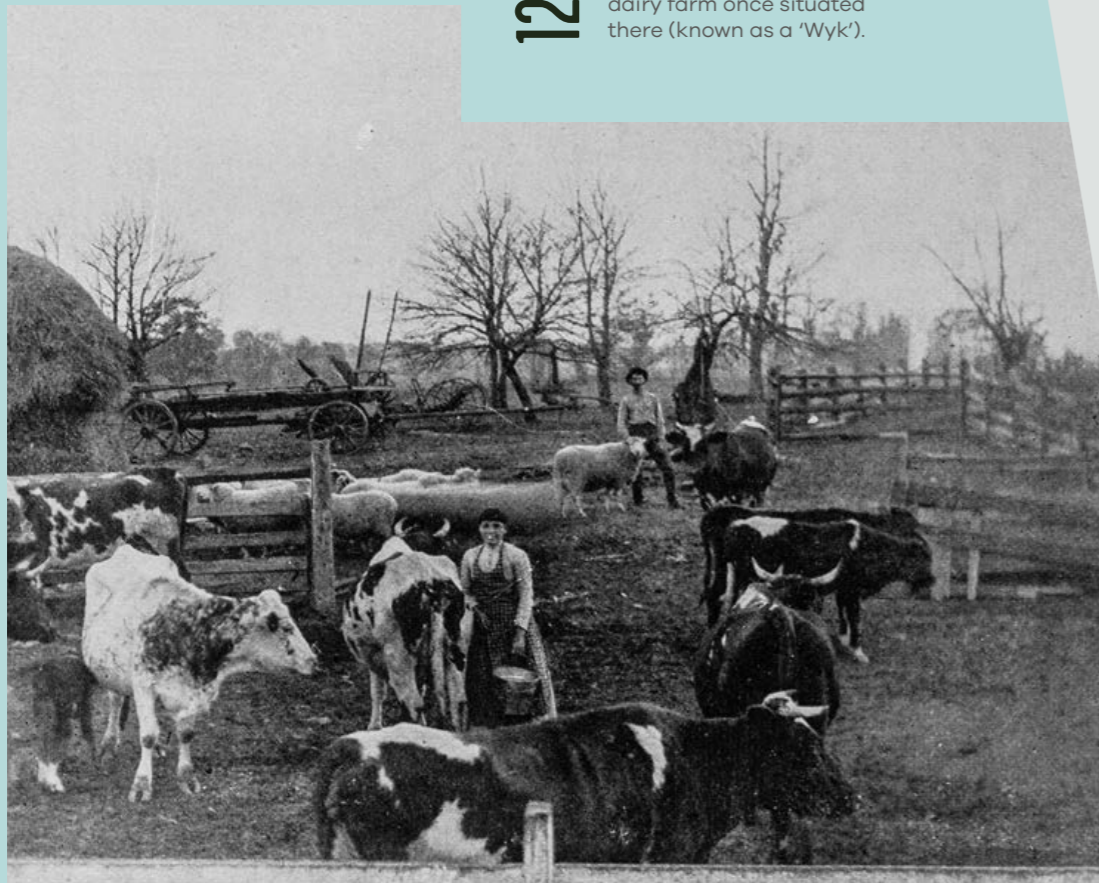


HISTORY

OF HACKNEY WICK.

1200s

Back in the 13th century, Hackney Wick received its name from the outlying dairy farm once situated there (known as a 'Wyk').



1700s



By the 18th century, Hackney Wick played a prominent role in the industrial revolution thanks to the production of silk, confectionery, toys and the creation of a refining business. Although industrial business boomed in the late 1800s it also contributed to general poverty and social decline in the area, with inadequate housing.

1900s



From the 1930s, local authorities set plans in motion to improve living conditions by opening public baths, a library and creating affordable housing. Many of the structures created in the 1960s have since been taken down and replaced with more attractive housing. Some of the factory buildings from Hackney Wick's industrial era still exist and are used as studios.

PRESENT DAY

IN HACKNEY WICK.

Hackney Wick is a diverse part of East London that is home to museums, boutique shops, artists' studios, quirky coffee shops and cafés, craft breweries, post offices and local supermarkets.

Many locals make use of the green open spaces and walking trails around Queen Elizabeth Olympic Park and Victoria Park. The River Lea canal offers plenty of vibrant bars and eateries serving up a range of cuisines. West Ham United's London Stadium and Lee Valley VeloPark continue to attract sports fans, while Victoria Park Cricket Field has a thriving playing community.





VODION

HOMERTON

A102

B113

A12

MABLEY GREEN

TUMBLING BAY PLAYGROUND

CHOBHAM MANOR

MARYLAND

EAST VILLAGE

HACKNEY WICK

HACKNEY WICK

STRATFORD INTERNATIONAL

A112

WELL STREET COMMON

VICTORIA PARK RD

VICTORIA PARK

LONDON AQUATICS CENTRE

STRATFORD

FISH ISLAND
OLD FORD

ARCELORMITTAL ORBIT

WATERWORKS RIVER

STRATFORD HIGH STREET

A12

SOUTH HACKNEY

OLD FORD RD

PUDDING MILL LANE

BOW

THE BOW QUARTER

ABBAY ROAD

BETHNAL GREEN

MILL MEADS

GLOBE TOWN

GRUYE RD

A11

BROMLEY-BY-BOW

BOW CHURCH

BOW ROAD

WEST HAM

MANOR RD

RIVER LEA

CHANNELSEA RIVER

GREEN GRASS

OPEN SPACES.

Vodion in Fish Island is close to the Queen Elizabeth Olympic and Victoria parks, with vast green spaces just a short stroll away. For the kids, there's Pleasure Gardens play area, Victoria Park Skatepark and the Kids' Main Playground. Adults will love a stroll around the nearby Great British Garden, or hiring a boat for a cruise around Victoria Park's West Boating Lake.



VICTORIA PARK
0.5
MILES

OLYMPIC PARK
0.6
MILES

BOATING LAKE
1.2
MILES





01

CRATE BREWERY & PIZZERIA

A trendy bar and brewery situated in an old factory, serving artisan stone-baked pizzas next to the River Lea.

cratebrewery.com

CUISINE: ITALIAN 0.6 MILES

03

LONDON AQUATICS CENTRE

The most technologically advanced swimming facilities in the world. Book swimming and diving lessons, or join the club gym.

londonaquaticscentre.org

SWIMMING, DIVING AND GYM CENTRE 2 MILES

02

BARGE EAST RESTAURANT

Floating Dutch barge restaurant serving local British fare with global and seasonal influence. Riverside gardens and outdoor dining are also available.

bargeeast.com

CUISINE: BRITISH 0.6 MILES

04

WESTFIELD STRATFORD CITY

Shop big-name and household brands at one of the UK's largest shopping centres.

uk.westfield.com/stratfordcity

SHOPPING CENTRE 2 MILES

05

05

EAST BANK

A powerhouse for innovation, creativity and learning on Queen Elizabeth Olympic Park. A unique collaboration between world-leading universities, arts and culture institutions.

future.london/partner/east-bank-partnership

COMMUNITY HUB 0.6 MILES

RIGHT ON YOUR DOORSTEP

NEARBY SCHOOLS

Hackney Wick and the surrounding area is home to several learning institutions.



OLD FORD PRIMARY ACADEMY

A school that enables all pupils to achieve through exceptional quality of teaching and support.

Ofsted: Outstanding

DISTANCE: 0.7 MILES AGES: 3-11

BOBBY MOORE ACADEMY PRIMARY

A school that values dedication and hard work and teaches pupils the values of integrity, ambition and leadership.

Ofsted: An outstanding school that has become an academy

DISTANCE: 0.3 MILES AGES: 4-19

MOSSBOURNE RIVERSIDE PRIMARY ACADEMY

A school that prides itself on its calm working atmosphere, creating well-rounded pupils who excel academically.

Ofsted: Outstanding

DISTANCE: 0.8 MILES AGES: 3-11

GAINSBOROUGH PRIMARY SCHOOL

A caring and supportive institution that makes its pupils feel valued as part of a learning community.

Ofsted: Good

DISTANCE: 0.7 MILES AGES: 2-11

V



V

OXFORD CIRCUS
25 MIN
FROM STRATFORD STATION

CHOICE

V

TO CONNECT
TO THE CITY

DINNER,
COCKTAILS
AND MUSIC



CONVENIENT FOR
COMMUTERS



LONDON BRIDGE
25 MIN
FROM STRATFORD STATION

V



DESIGNED WITH
HIGH QUALITY
 JUST FOR YOU

HACKNEY | E3



KITCHEN

- Contemporary fitted kitchens designed and manufactured by Commodore
- Light grey handleless cupboards
- Soft close drawer with cutlery insert included
- Commodore mink glass splashback
- 20mm Silestone Blanco Note/ White North 14 worktop
- 1 bowl inset stainless steel sink with drainer and mixer tap
- Touch control Bosch single oven & hob (1 & 2 bedroom apartments)
- Touch control Bosch double oven & hob (3 bedroom apartments)
- Commodore extractor
- Zanussi integrated fridge/freezer
- Zanussi (freestanding in cupboard) washer/dryer
- Zanussi integrated dishwasher
- Chrome sockets and light switches

BATHROOM

- Contemporary Ideal Standard bathroom white 3 piece sanitaryware
- Chrome Ideal Standard single lever basin tap
- Chrome Grohe Eurostyle Cosmopolitan bath spout
- Shower over bath
- Glass bath screen
- Diesse Bari wall and floor tiles 307mm x 615mm in silver
- 20mm Silestone vanity worktop
- Large mirror above sink area
- Chrome heated towel rail

EN SUITE

- Contemporary Ideal Standard en suite white 3 piece sanitaryware
- Chrome Ideal Standard single lever basin tap
- Grohe rain shower system
- 20mm Silestone vanity worktop
- Large mirror above sink area
- Chrome heated towel rail
- Tile flooring

LIGHTING & ELECTRICAL

- LED downlighters to hallway, living room, kitchen and bathrooms
- Pendant lighting to bedrooms
- Entrotec video/audio monitor – entry-phone
- TV/DAB Radio, BT socket and Sky Q to living area
- White shaver socket
- White Tubular Electric heater to airing cupboard

BEDROOMS

- Elford twist stone carpet to bedrooms
- Mirrored sliding doors, chrome railing fitted wardrobes to bedroom 1
- TV and BT socket

INTERNAL FINISHES

- Dulux Matt Emulsion white paint to ceilings and walls
- Soft oak light brown Quickstep impressive flooring to kitchen/living/dining areas and hallway



- SONIC HOUSE**
1 & 2 BEDROOM APARTMENTS
PLOTS 3-48
- RYAN HOUSE**
1 & 2 BEDROOM APARTMENTS
PLOTS 51-80
- OLD FORD LOCKS APARTMENTS**
1 & 2 BEDROOM APARTMENTS
PLOTS 81-110
- DUCKETT'S HOUSE**
1 & 2 BEDROOM APARTMENTS
PLOTS 111-144
- SEATING**
- AMENITY & BIODIVERSE SPACE**
- BS** GROUND LEVEL BIN STORE
- CS** GROUND LEVEL CYCLE STORE
- DISABLED PARKING**



01

BEDROOM APARTMENTS

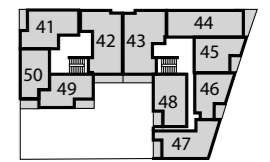
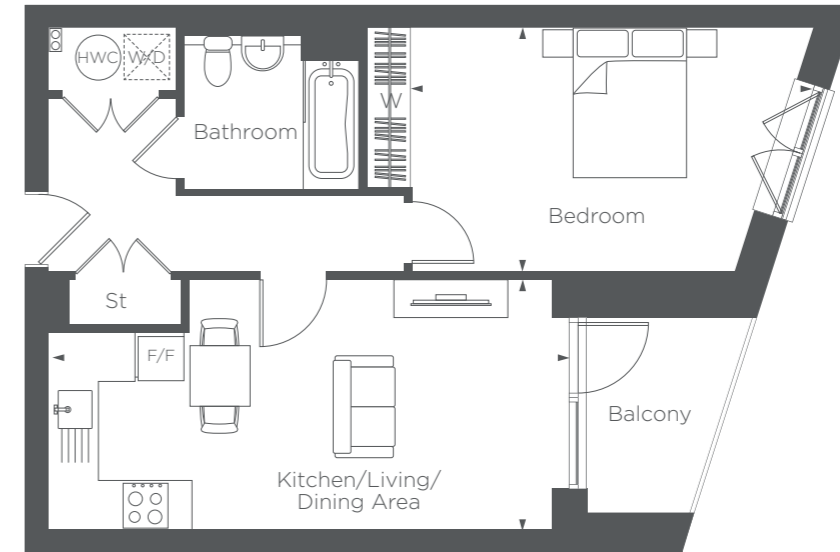
DESIGNED TO
GIVE YOU THE
FREEDOM TO FLOW
THROUGHOUT



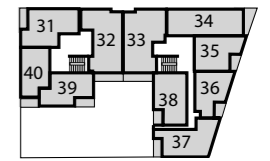
HACKNEY | E3

SONIC HOUSE

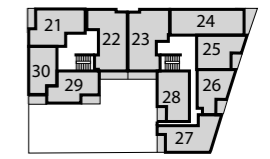
PLOT 5



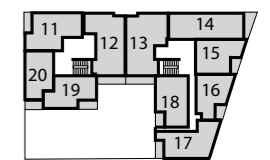
Fourth floor



Third floor



Second floor



First floor



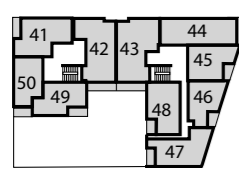
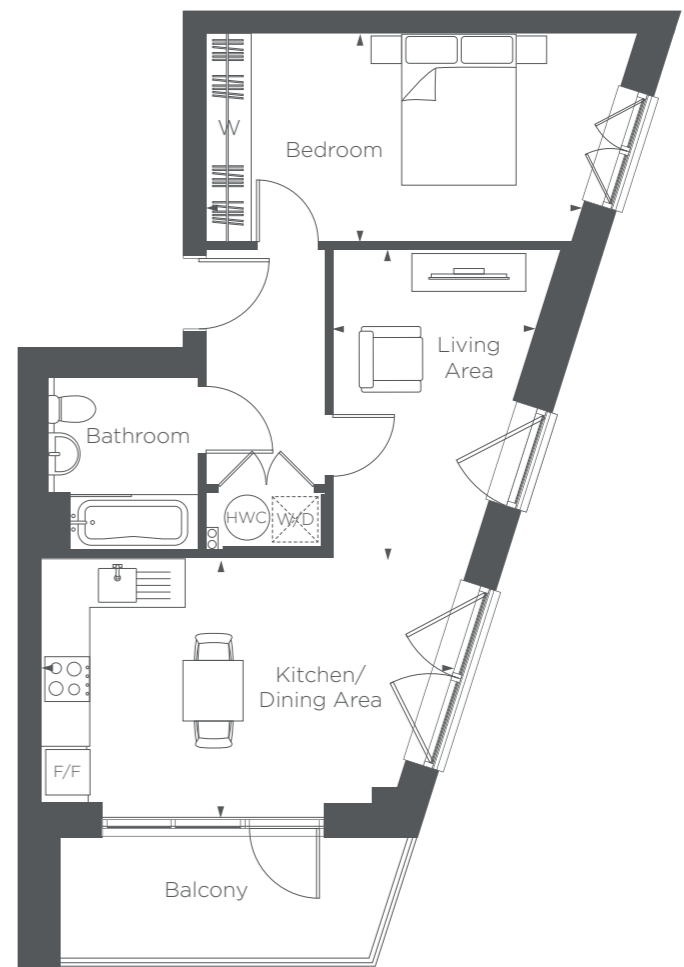
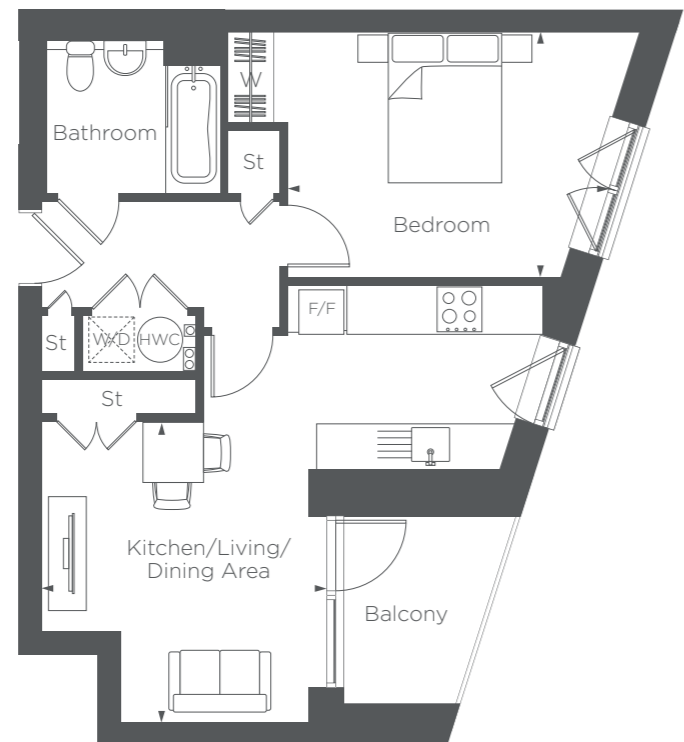
Ground floor



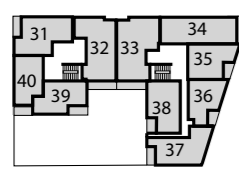
Kitchen/Living/Dining Area	6.89M × 3.33M	22'6" × 10'9"
Bedroom	5.31M × 3.23M	17'4" × 10'5"
Balcony	3.33M × 2.13M	10'9" × 6'9"

F/F – Fridge/Freezer HWC – Hot Water Cylinder St – Store W/D – Washer Dryer W – Wardrobe
 Floorplans shown are indicative only. The kitchen layout and furniture positions are for indicative purposes only. All dimensions indicated are approximate and should not be relied upon for carpet sizes or items of furniture. The developer reserves the right to make changes to these plans prior to exchange of contracts. For exact plot specification, details of external and internal finishes, dimensions and floorplan differences, please speak to a member of our Sales Team for more details.

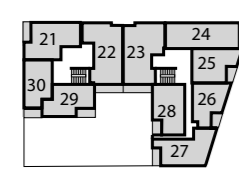




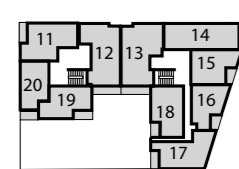
Fourth floor



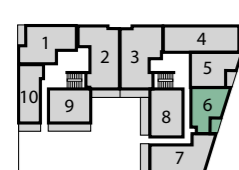
Third floor



Second floor



First floor



Ground floor

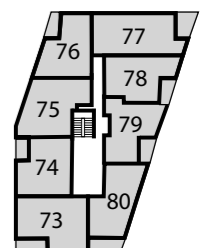
Kitchen/Living/Dining Area
3.98M x 3.76M 13'0" x 12'3"

Bedroom
4.25m x 3.24M 13'9" x 10'6"

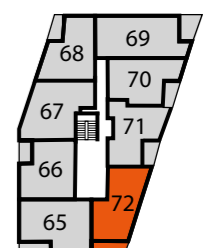
Balcony
2.78M x 2.07M 9'1" x 6'7"

SONIC HOUSE

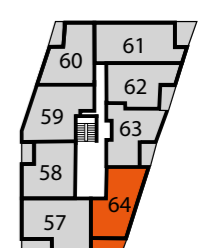
PLOT 6



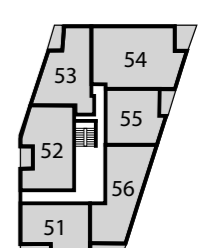
Fourth floor



Third floor



Second floor



First floor

Kitchen/Dining Area
5.45M x 3.46M 17'8" x 11'3"

Living Area
4.14M x 3.09M 13'7" x 10'2"

Bedroom
5.27M x 2.75M 17'2" x 9'0"

Balcony
4.35M x 1.76M 14'2" x 5'7"

RYAN HOUSE

PLOTS 64 & 72

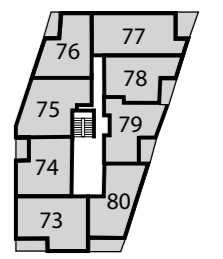
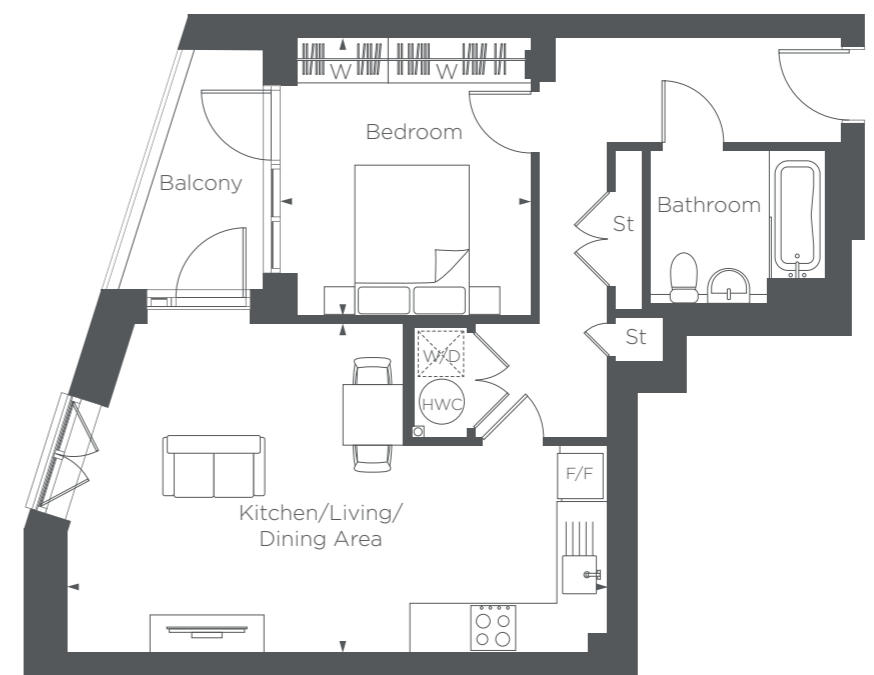


F/F – Fridge/Freezer HWC – Hot Water Cylinder St – Store W/D – Washer Dryer W – Wardrobe
Floorplans shown are indicative only. The kitchen layout and furniture positions are for indicative purposes only. All dimensions indicated are approximate and should not be relied upon for carpet sizes or items of furniture. The developer reserves the right to make changes to these plans prior to exchange of contracts. For exact plot specification, details of external and internal finishes, dimensions and floorplan differences, please speak to a member of our Sales Team for more details.

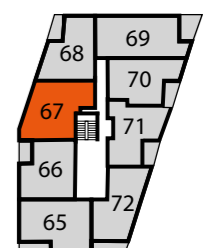
F/F – Fridge/Freezer HWC – Hot Water Cylinder St – Store W/D – Washer Dryer W – Wardrobe
Floorplans shown are indicative only. The kitchen layout and furniture positions are for indicative purposes only. All dimensions indicated are approximate and should not be relied upon for carpet sizes or items of furniture. The developer reserves the right to make changes to these plans prior to exchange of contracts. For exact plot specification, details of external and internal finishes, dimensions and floorplan differences, please speak to a member of our Sales Team for more details.



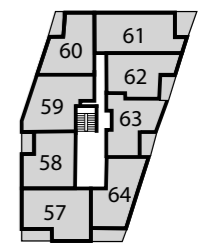
V



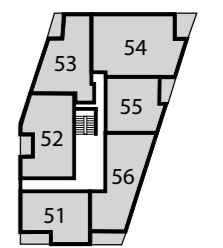
Fourth floor



Third floor



Second floor



First floor



RYAN HOUSE

PLOT 67

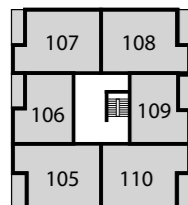
Kitchen/Living/Dining Area
6.17M x 4.34M 20'2" x 14'2"

Bedroom
3.68M x 3.32M 12'0" x 10'8"

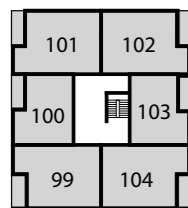
Balcony
3.18M x 1.95M 10'4" x 6'3"

F/F – Fridge/Freezer HWC – Hot Water Cylinder St – Store W/D – Washer Dryer W – Wardrobe
Floorplans shown are indicative only. The kitchen layout and furniture positions are for indicative purposes only. All dimensions indicated are approximate and should not be relied upon for carpet sizes or items of furniture. The developer reserves the right to make changes to these plans prior to exchange of contracts. For exact plot specification, details of external and internal finishes, dimensions and floorplan differences, please speak to a member of our Sales Team for more details.

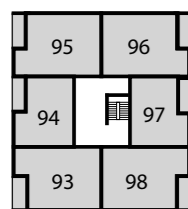




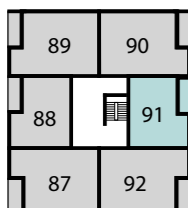
Fifth floor



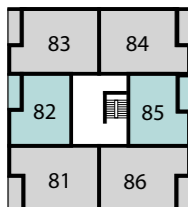
Fourth floor



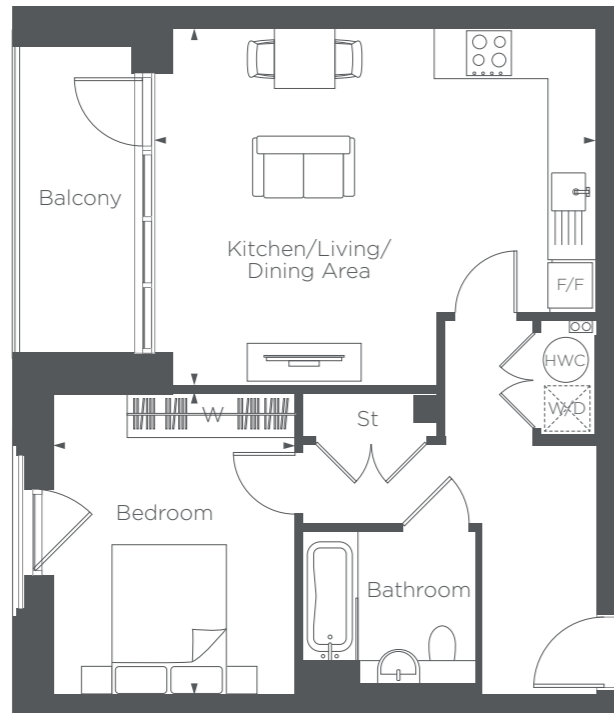
Third floor



Second floor



First floor



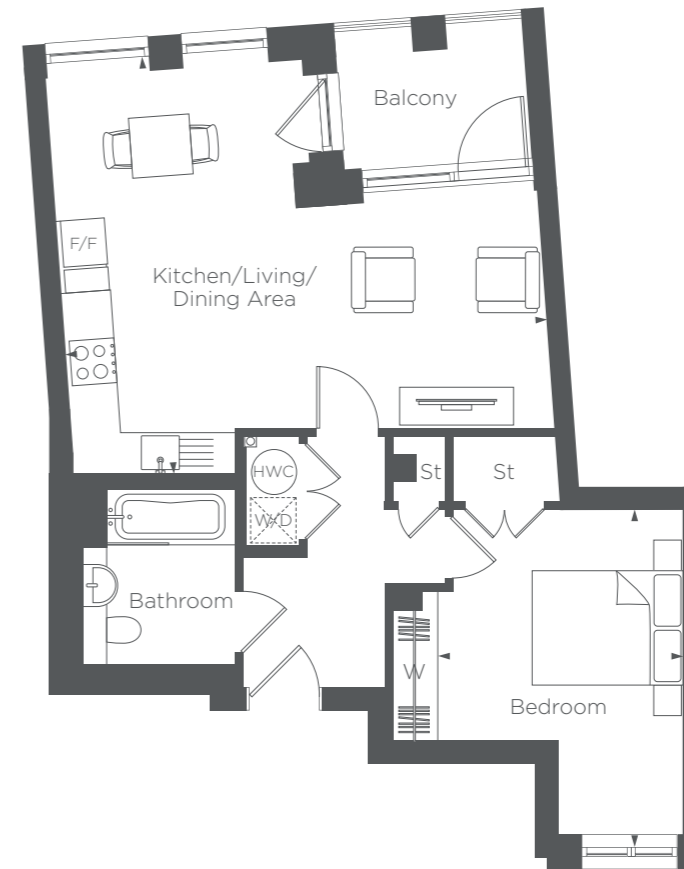
Kitchen/Living/Dining Area
5.90M x 4.71M 19'3" x 15'4"

Bedroom
3.99M x 3.19M 13'0" x 10'4"

Balcony
3.76M x 1.63M 12'3" x 5'3"

OLD FORD LOCKS APARTMENTS

PLOTS 82, 85 & 91



Kitchen/Living/Dining Area
5.61M x 3.30M 18'4" x 10'8"

Bedroom
4.30M x 3.24M 14'1" x 10'6"

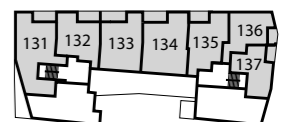
Balcony
2.48M x 1.95M 8'1" x 6'3"

DUCKETT'S HOUSE

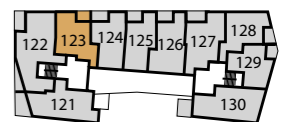
PLOTS 113 & 123



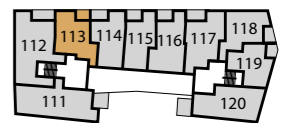
Fourth floor



Third floor



Second floor



First floor

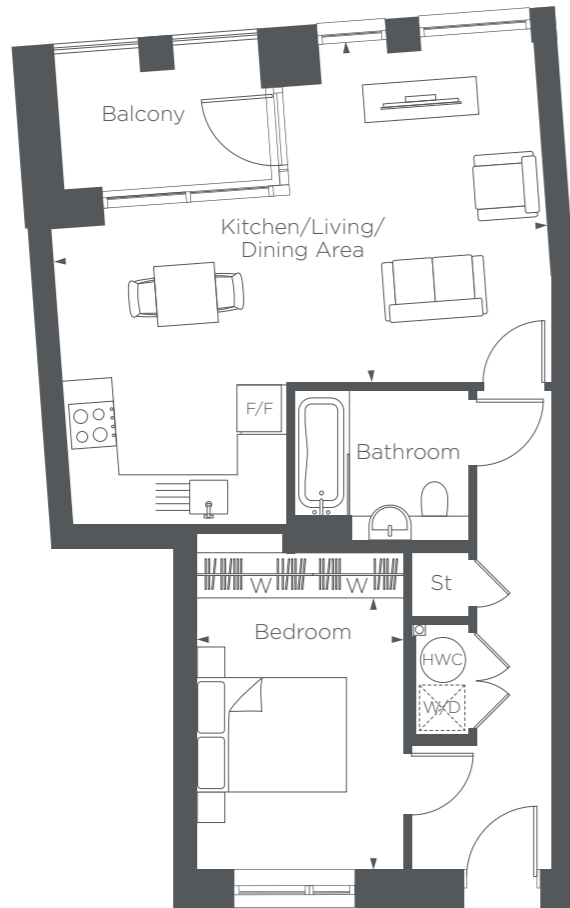


F/F – Fridge/Freezer HWC – Hot Water Cylinder St – Store W/D – Washer Dryer W – Wardrobe

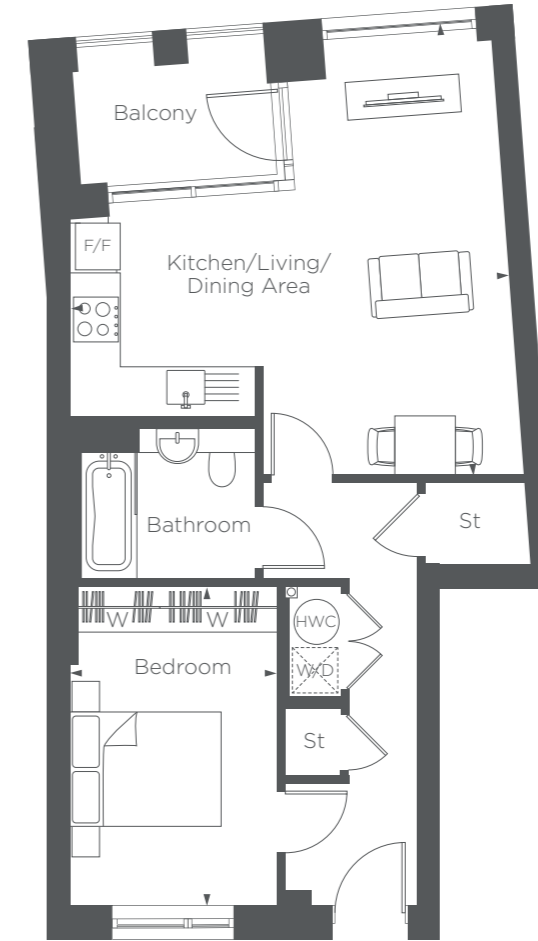
Floorplans shown are indicative only. The kitchen layout and furniture positions are for indicative purposes only. All dimensions indicated are approximate and should not be relied upon for carpet sizes or items of furniture. The developer reserves the right to make changes to these plans prior to exchange of contracts. For exact plot specification, details of external and internal finishes, dimensions and floorplan differences, please speak to a member of our Sales Team for more details.

F/F – Fridge/Freezer HWC – Hot Water Cylinder St – Store W/D – Washer Dryer W – Wardrobe

Floorplans shown are indicative only. The kitchen layout and furniture positions are for indicative purposes only. All dimensions indicated are approximate and should not be relied upon for carpet sizes or items of furniture. The developer reserves the right to make changes to these plans prior to exchange of contracts. For exact plot specification, details of external and internal finishes, dimensions and floorplan differences, please speak to a member of our Sales Team for more details.



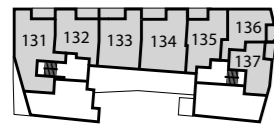
114



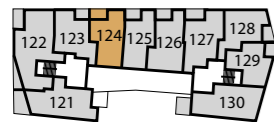
115



Fourth floor



Third floor



Second floor



First floor

Kitchen/Living/Dining Area
6.56M x 4.50M 21'5" x 14'7"

Bedroom
3.59M x 2.75M 11'7" x 9'0"

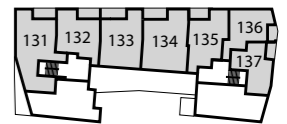
Balcony
2.71M x 1.95M 8'8" x 6'3"

DUCKETT'S
HOUSE

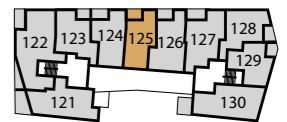
PLOTS 114 & 124



Fourth floor



Third floor



Second floor



First floor

Kitchen/Living/Dining Area
5.90M x 3.78M 19'4" x 12'5"

Bedroom
3.61M x 2.75M 11'8" x 9'0"

Balcony
2.70M x 1.95M 8'8" x 6'3"

DUCKETT'S
HOUSE

PLOTS 115 & 125

26

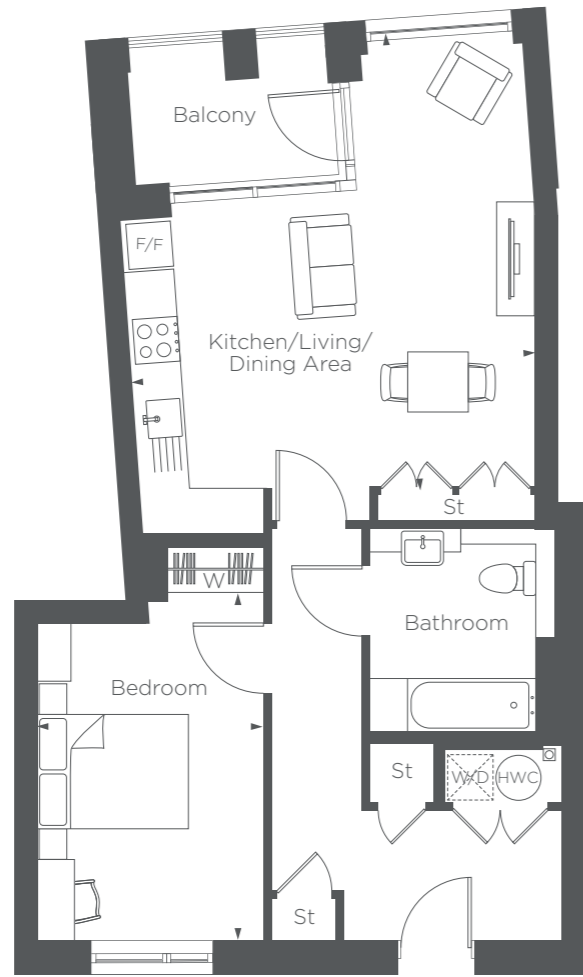


F/F – Fridge/Freezer HWC – Hot Water Cylinder St – Store W/D – Washer Dryer W – Wardrobe
Floorplans shown are indicative only. The kitchen layout and furniture positions are for indicative purposes only. All dimensions indicated are approximate and should not be relied upon for carpet sizes or items of furniture. The developer reserves the right to make changes to these plans prior to exchange of contracts. For exact plot specification, details of external and internal finishes, dimensions and floorplan differences, please speak to a member of our Sales Team for more details.

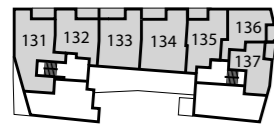
27



F/F – Fridge/Freezer HWC – Hot Water Cylinder St – Store W/D – Washer Dryer W – Wardrobe
Floorplans shown are indicative only. The kitchen layout and furniture positions are for indicative purposes only. All dimensions indicated are approximate and should not be relied upon for carpet sizes or items of furniture. The developer reserves the right to make changes to these plans prior to exchange of contracts. For exact plot specification, details of external and internal finishes, dimensions and floorplan differences, please speak to a member of our Sales Team for more details.



Fourth floor



Third floor



Second floor



First floor

Kitchen/Living/Dining Area
5.93M x 5.34M 19'4" x 17'5"

Bedroom
4.60M x 3.00M 15'0" x 9'8"

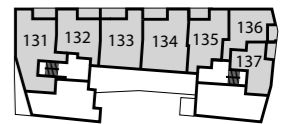
Balcony
2.33M x 1.95M 7'6" x 6'3"

DUCKETT'S HOUSE

LOTS 116 & 126



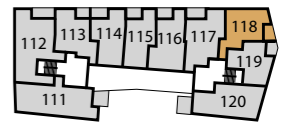
Fourth floor



Third floor



Second floor



First floor

Kitchen/Living/Dining Area
6.07M x 5.16M 19'9" x 16'9"

Bedroom
4.23M x 3.21M 13'8" x 10'5"

Balcony
2.98M x 1.94M 9'7" x 6'3"

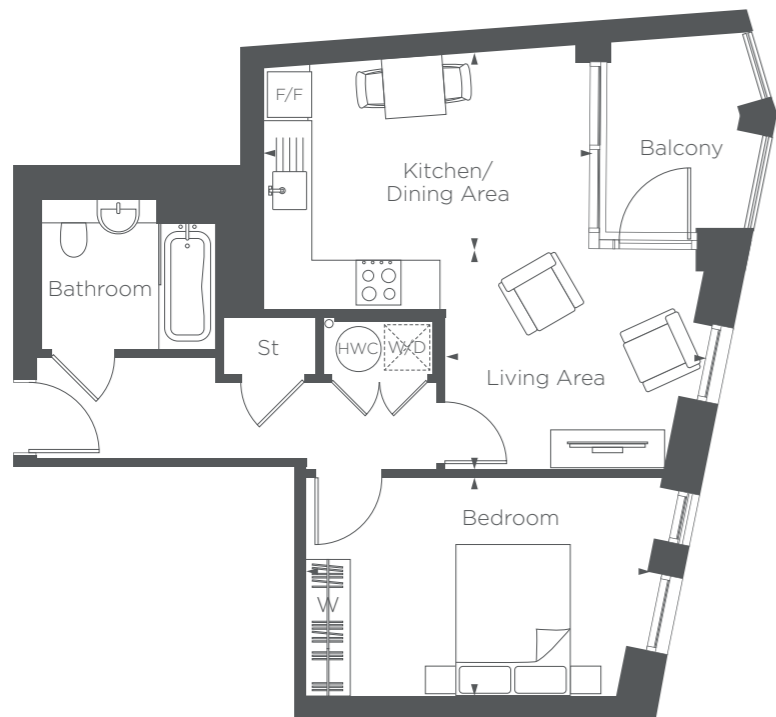
DUCKETT'S HOUSE

LOTS 118 & 128

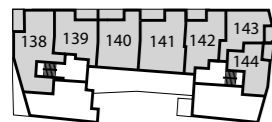
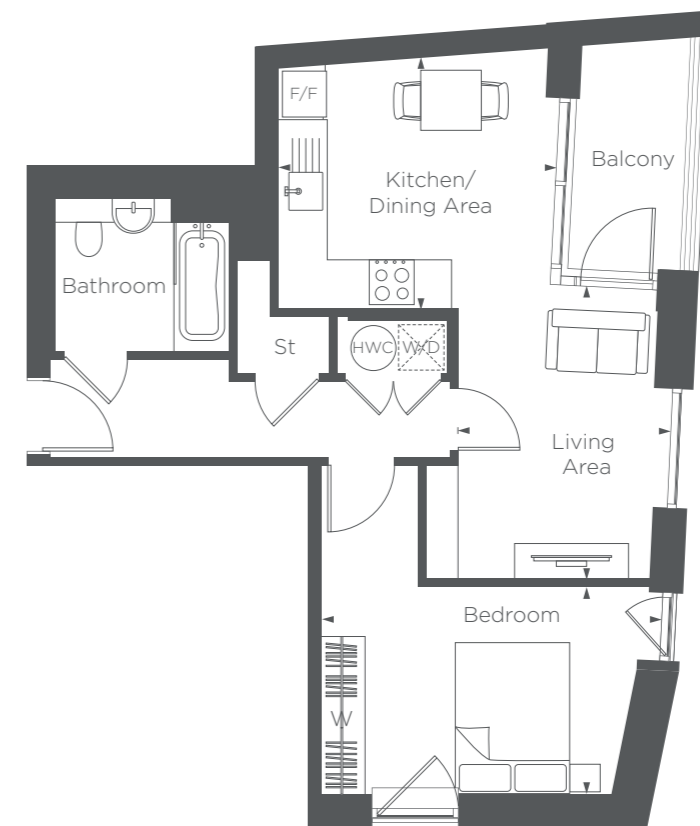


F/F – Fridge/Freezer HWC – Hot Water Cylinder St – Store W/D – Washer Dryer W – Wardrobe
Floorplans shown are indicative only. The kitchen layout and furniture positions are for indicative purposes only. All dimensions indicated are approximate and should not be relied upon for carpet sizes or items of furniture. The developer reserves the right to make changes to these plans prior to exchange of contracts. For exact plot specification, details of external and internal finishes, dimensions and floorplan differences, please speak to a member of our Sales Team for more details.

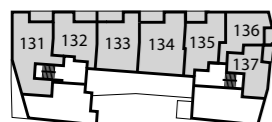
F/F – Fridge/Freezer HWC – Hot Water Cylinder St – Store W/D – Washer Dryer W – Wardrobe
Floorplans shown are indicative only. The kitchen layout and furniture positions are for indicative purposes only. All dimensions indicated are approximate and should not be relied upon for carpet sizes or items of furniture. The developer reserves the right to make changes to these plans prior to exchange of contracts. For exact plot specification, details of external and internal finishes, dimensions and floorplan differences, please speak to a member of our Sales Team for more details.



119



Fourth floor



Third floor



Second floor



First floor

Kitchen/Dining Area
4.33M x 3.19M 14'2" x 10'4"

Living Area
2.93M x 2.92M 9'6" x 9'5"

Bedroom
4.74M x 2.89M 15'5" x 9'4"

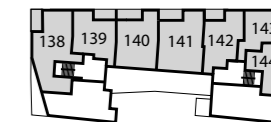
Balcony
2.65M x 2.09M 8'6" x 6'8"

DUCKETT'S HOUSE

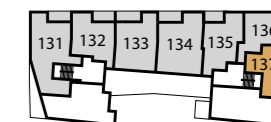
PLOT 119

DUCKETT'S HOUSE

PLOT 137



Fourth floor



Third floor



Second floor



First floor

Kitchen/Dining Area
3.70M x 3.33M 12'1" x 10'9"

Living Area
3.91M x 2.81M 12'8" x 9'2"

Bedroom
4.55M x 2.75M 14'9" x 9'0"

Balcony
3.08M x 1.66M 10'1" x 5'4"



F/F – Fridge/Freezer HWC – Hot Water Cylinder St – Store W/D – Washer Dryer W – Wardrobe
Floorplans shown are indicative only. The kitchen layout and furniture positions are for indicative purposes only. All dimensions indicated are approximate and should not be relied upon for carpet sizes or items of furniture. The developer reserves the right to make changes to these plans prior to exchange of contracts. For exact plot specification, details of external and internal finishes, dimensions and floorplan differences, please speak to a member of our Sales Team for more details.

F/F – Fridge/Freezer HWC – Hot Water Cylinder St – Store W/D – Washer Dryer W – Wardrobe
Floorplans shown are indicative only. The kitchen layout and furniture positions are for indicative purposes only. All dimensions indicated are approximate and should not be relied upon for carpet sizes or items of furniture. The developer reserves the right to make changes to these plans prior to exchange of contracts. For exact plot specification, details of external and internal finishes, dimensions and floorplan differences, please speak to a member of our Sales Team for more details.

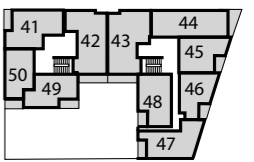
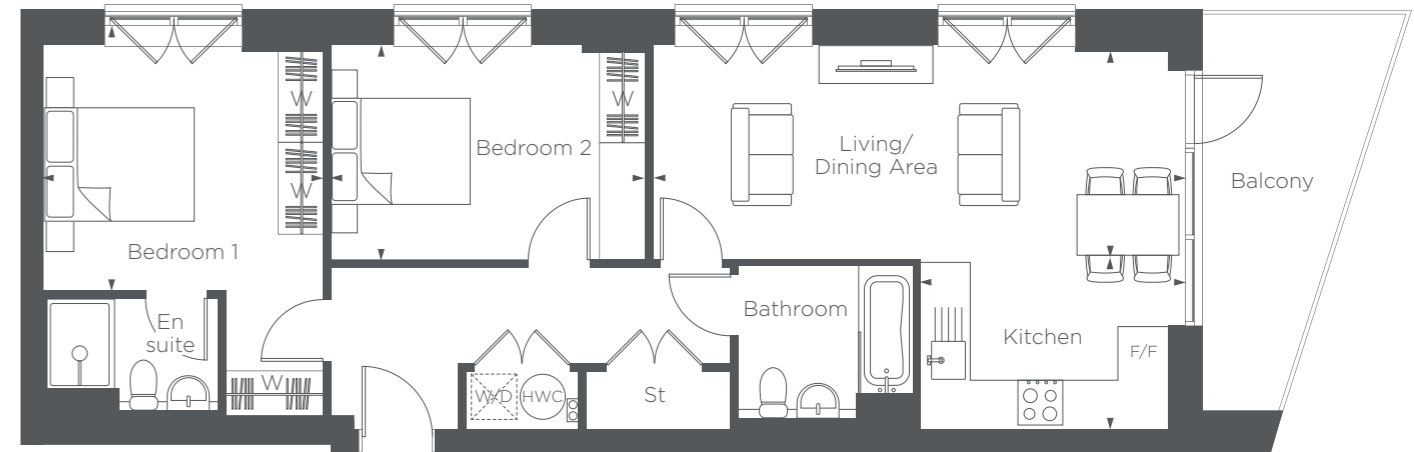
02

BEDROOM APARTMENTS

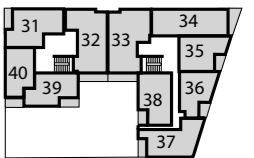
DESIGNED TO
GIVE YOU THE
FREEDOM TO FLOW
THROUGHOUT



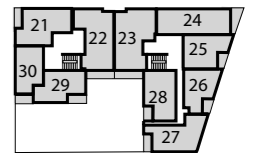
HACKNEY | E3



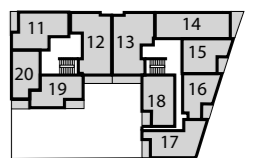
Fourth floor



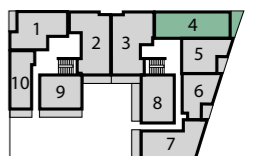
Third floor



Second floor



First floor



Ground floor



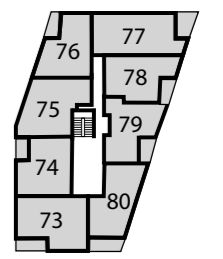
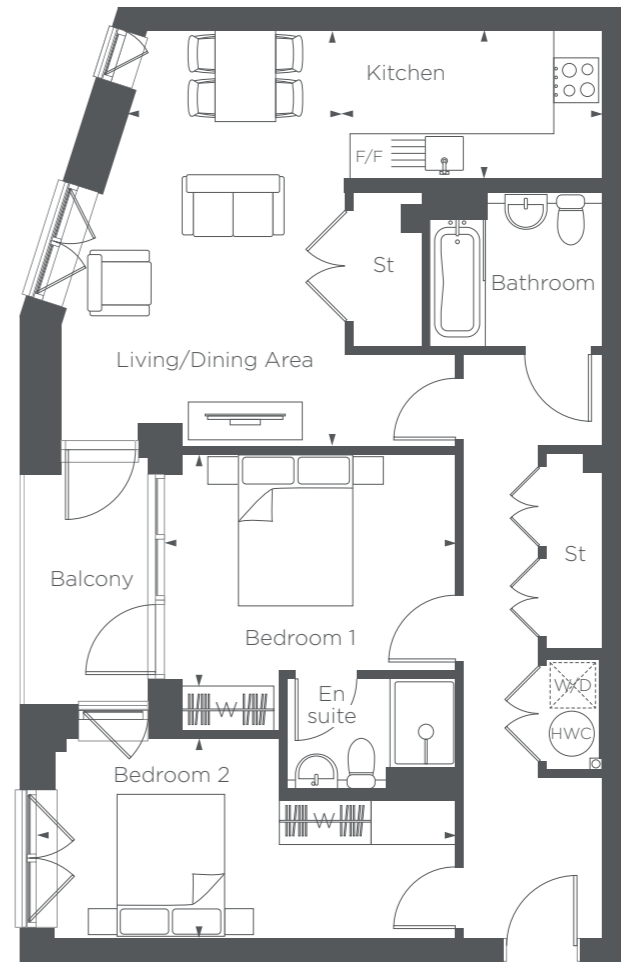
33

SONIC HOUSE

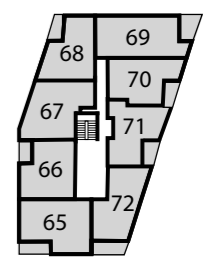
PLOT 4

Kitchen	3.26M × 2.14M	10'8" × 7'0"
Living/Dining Area	7.04M × 2.84M	23'0" × 9'3"
Bedroom 1	3.71M × 3.27M	12'1" × 10'7"
Bedroom 2	4.15M × 2.84M	13'6" × 9'3"
Balcony	5.32M × 2.28M	17'4" × 7'4"

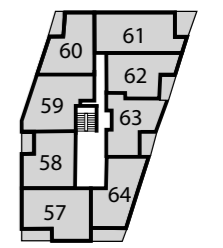
F/F – Fridge/Freezer HWC – Hot Water Cylinder St – Store W/D – Washer Dryer W – Wardrobe
Floorplans shown are indicative only. The kitchen layout and furniture positions are for indicative purposes only. All dimensions indicated are approximate and should not be relied upon for carpet sizes or items of furniture. The developer reserves the right to make changes to these plans prior to exchange of contracts. For exact plot specification, details of external and internal finishes, dimensions and floorplan differences, please speak to a member of our Sales Team for more details.



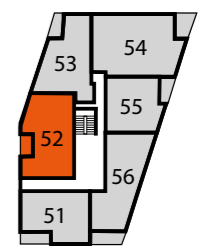
Fourth floor



Third floor



Second floor



First floor



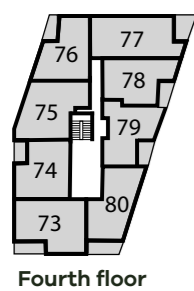
RYAN HOUSE

PLOT 52

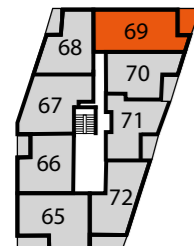
Kitchen	3.35M x 2.01M	10'9" x 6'5"
Living/Dining Area	5.50M x 3.76M	18'0" x 12'3"
Bedroom 1	3.84M x 3.06M	12'5" x 10'0"
Bedroom 2	5.31M x 2.64M	17'4" x 8'6"
Balcony	3.37M x 1.73M	11'0" x 5'6"

F/F – Fridge/Freezer HWC – Hot Water Cylinder St – Store W/D – Washer Dryer W – Wardrobe
 Floorplans shown are indicative only. The kitchen layout and furniture positions are for indicative purposes only. All dimensions indicated are approximate and should not be relied upon for carpet sizes or items of furniture. The developer reserves the right to make changes to these plans prior to exchange of contracts. For exact plot specification, details of external and internal finishes, dimensions and floorplan differences, please speak to a member of our Sales Team for more details.

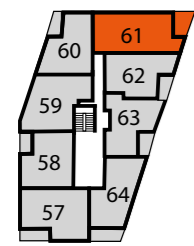




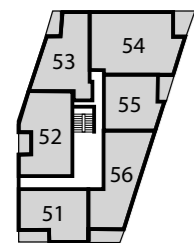
Fourth floor



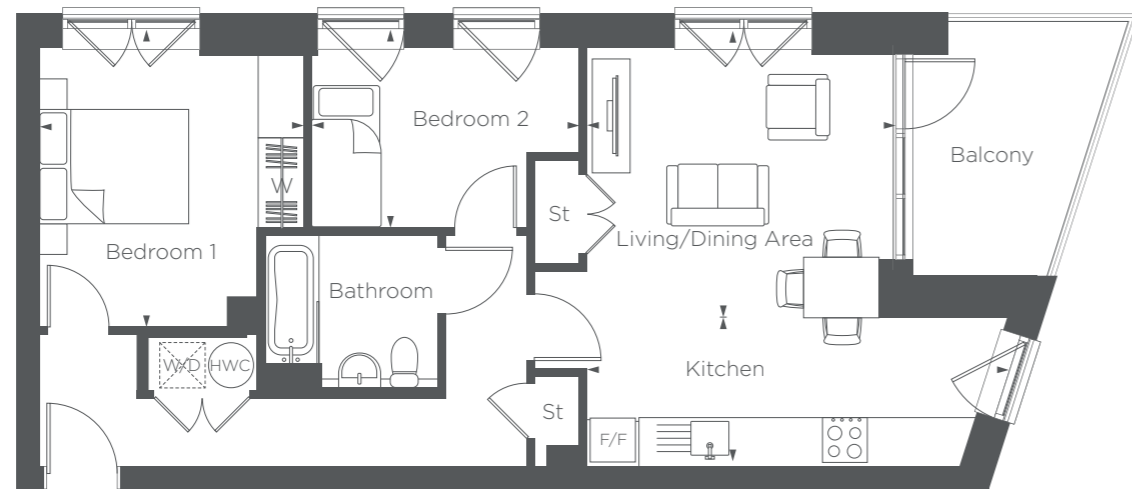
Third floor



Second floor



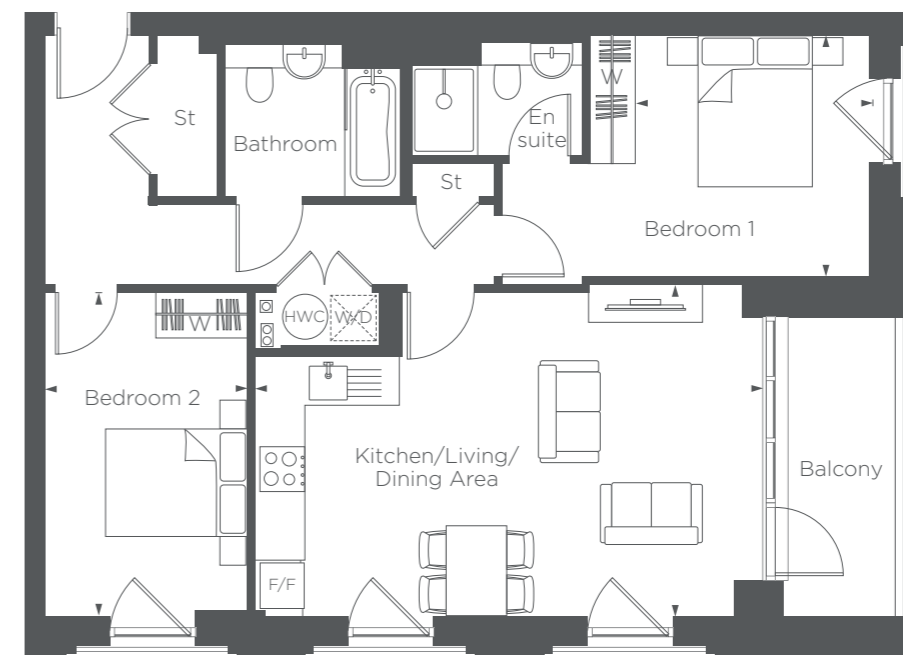
First floor



Kitchen	4.93M x 1.97M	16'1" x 6'4"
Living/Dining Area	4.08M x 3.47M	13'3" x 11'3"
Bedroom 1	3.70M x 3.50M	12'1" x 11'4"
Bedroom 2	3.54M x 2.40M	11'6" x 7'8"
Balcony	3.42M x 2.64M	11'2" x 8'6"

RYAN HOUSE

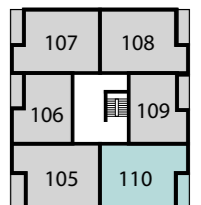
PLOTS 61 & 69



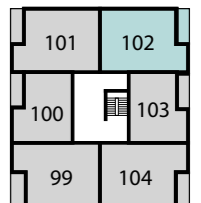
Kitchen/Living/Dining Area	6.74M x 4.40M	22'1" x 14'4"
Bedroom 1	3.73M x 3.13M	12'2" x 10'2"
Bedroom 2	4.44M x 2.65M	14'5" x 8'6"
Balcony	3.94M x 1.74M	12'9" x 5'7"

OLD FORD LOCKS APARTMENTS

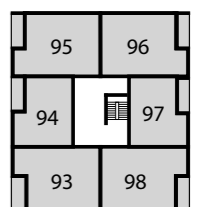
PLOTS 81, 84, 86, 102 & 110



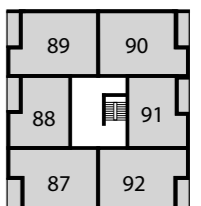
Fifth floor



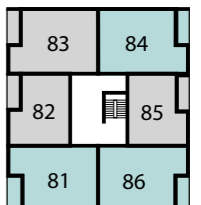
Fourth floor



Third floor



Second floor

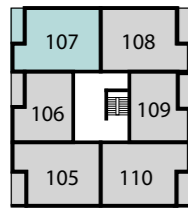


First floor

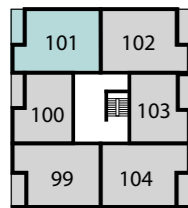


F/F – Fridge/Freezer HWC – Hot Water Cylinder St – Store W/D – Washer Dryer W – Wardrobe
 Floorplans shown are indicative only. The kitchen layout and furniture positions are for indicative purposes only. All dimensions indicated are approximate and should not be relied upon for carpet sizes or items of furniture. The developer reserves the right to make changes to these plans prior to exchange of contracts. For exact plot specification, details of external and internal finishes, dimensions and floorplan differences, please speak to a member of our Sales Team for more details.

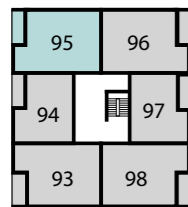
F/F – Fridge/Freezer HWC – Hot Water Cylinder St – Store W/D – Washer Dryer W – Wardrobe
 Floorplans shown are indicative only. The kitchen layout and furniture positions are for indicative purposes only. All dimensions indicated are approximate and should not be relied upon for carpet sizes or items of furniture. The developer reserves the right to make changes to these plans prior to exchange of contracts. For exact plot specification, details of external and internal finishes, dimensions and floorplan differences, please speak to a member of our Sales Team for more details.



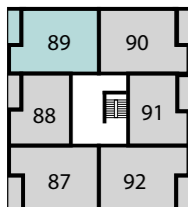
Fifth floor



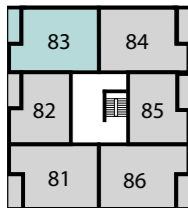
Fourth floor



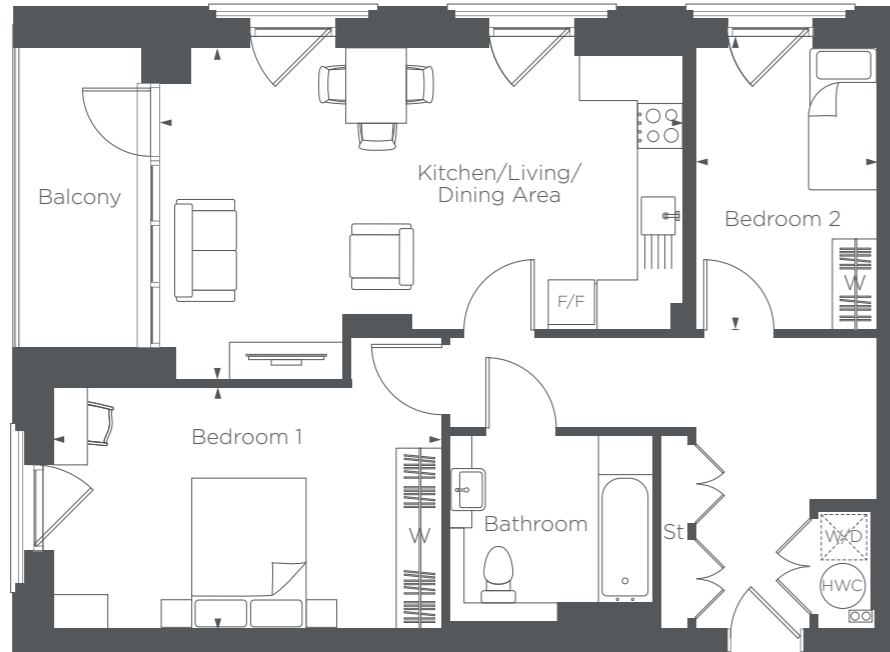
Third floor



Second floor



First floor



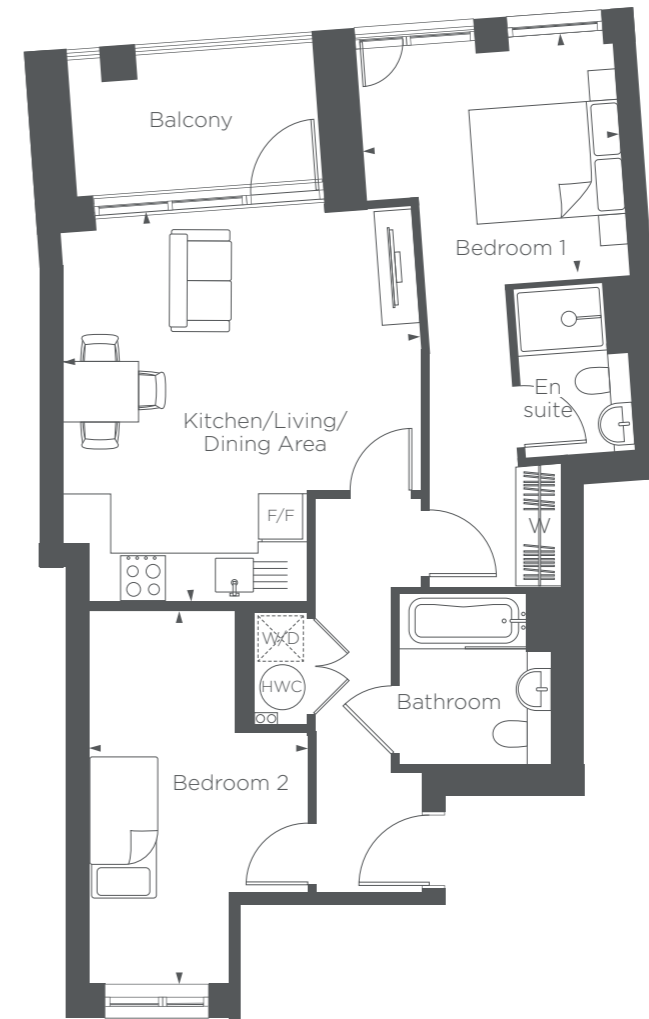
Kitchen/Living/Dining Area	6.99M x 4.40M	22'9" x 14'4"
Bedroom 1	5.13M x 3.19M	16'8" x 10'4"
Bedroom 2	3.88M x 2.40M	12'7" x 7'8"
Balcony	3.94M x 1.74M	12'9" x 5'7"

OLD FORD LOCKS APARTMENTS

PLOTS 83, 89, 95,
101 & 107

F/F – Fridge/Freezer HWC – Hot Water Cylinder St – Store W/D – Washer Dryer W – Wardrobe

Floorplans shown are indicative only. The kitchen layout and furniture positions are for indicative purposes only. All dimensions indicated are approximate and should not be relied upon for carpet sizes or items of furniture. The developer reserves the right to make changes to these plans prior to exchange of contracts. For exact plot specification, details of external and internal finishes, dimensions and floorplan differences, please speak to a member of our Sales Team for more details.



Kitchen/Living/Dining Area	5.17M x 4.74M	16'9" x 15'5"
Bedroom 1	3.41M x 3.26M	11'1" x 10'6"
Bedroom 2	4.94M x 2.90M	16'2" x 9'5"
Balcony	3.27M x 1.96M	10'7" x 6'4"

DUCKETT'S HOUSE

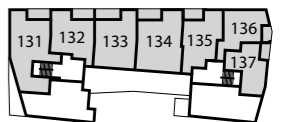
PLOTS 117 & 127

F/F – Fridge/Freezer HWC – Hot Water Cylinder St – Store W/D – Washer Dryer W – Wardrobe

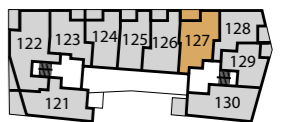
Floorplans shown are indicative only. The kitchen layout and furniture positions are for indicative purposes only. All dimensions indicated are approximate and should not be relied upon for carpet sizes or items of furniture. The developer reserves the right to make changes to these plans prior to exchange of contracts. For exact plot specification, details of external and internal finishes, dimensions and floorplan differences, please speak to a member of our Sales Team for more details.



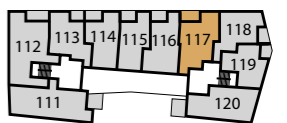
Fourth floor



Third floor

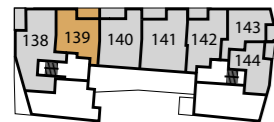
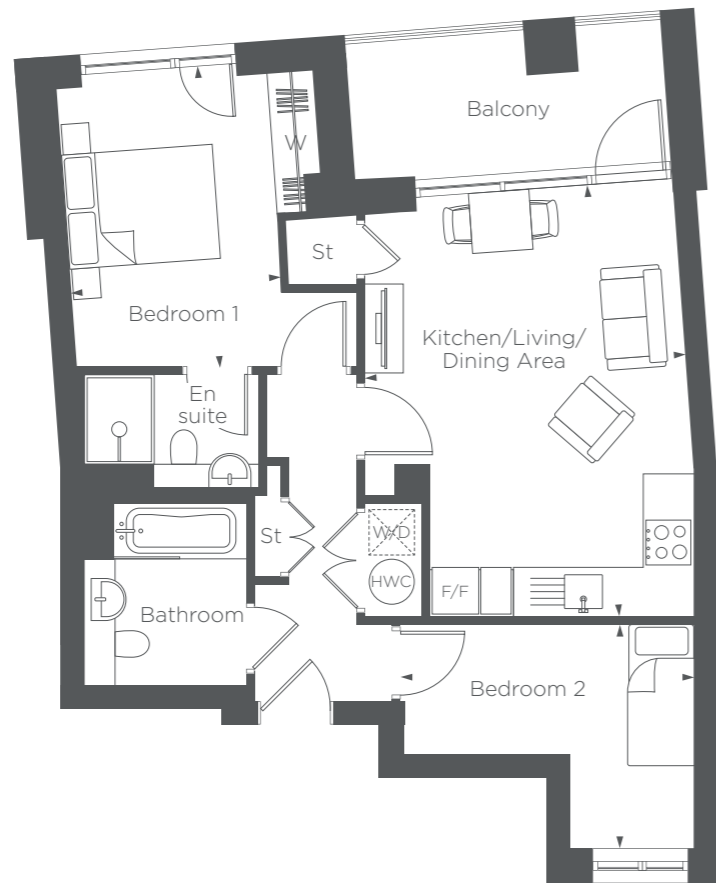


Second floor

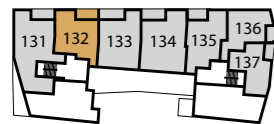


First floor





Fourth floor



Third floor



Second floor

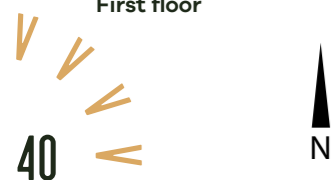


First floor

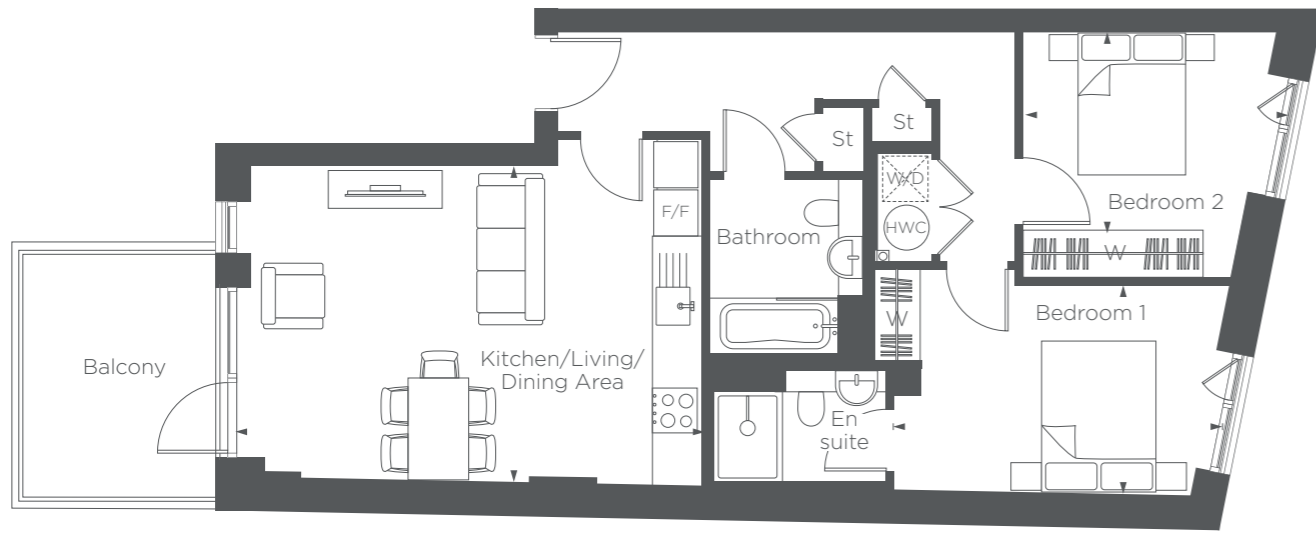
Kitchen/Living/Dining Area	5.71M × 4.19M	18'7" × 13'7"
Bedroom 1	3.98M × 2.80M	13'0" × 9'1"
Bedroom 2	3.87M × 2.96M	12'6" × 9'7"
Balcony	4.18M × 1.82M	13'7" × 5'9"

DUCKETT'S HOUSE

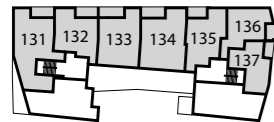
PLOTS 132 & 139



F/F – Fridge/Freezer HWC – Hot Water Cylinder St – Store W/D – Washer Dryer W – Wardrobe
 Floorplans shown are indicative only. The kitchen layout and furniture positions are for indicative purposes only. All dimensions indicated are approximate and should not be relied upon for carpet sizes or items of furniture. The developer reserves the right to make changes to these plans prior to exchange of contracts. For exact plot specification, details of external and internal finishes, dimensions and floorplan differences, please speak to a member of our Sales Team for more details.



Fourth floor



Third floor



Second floor

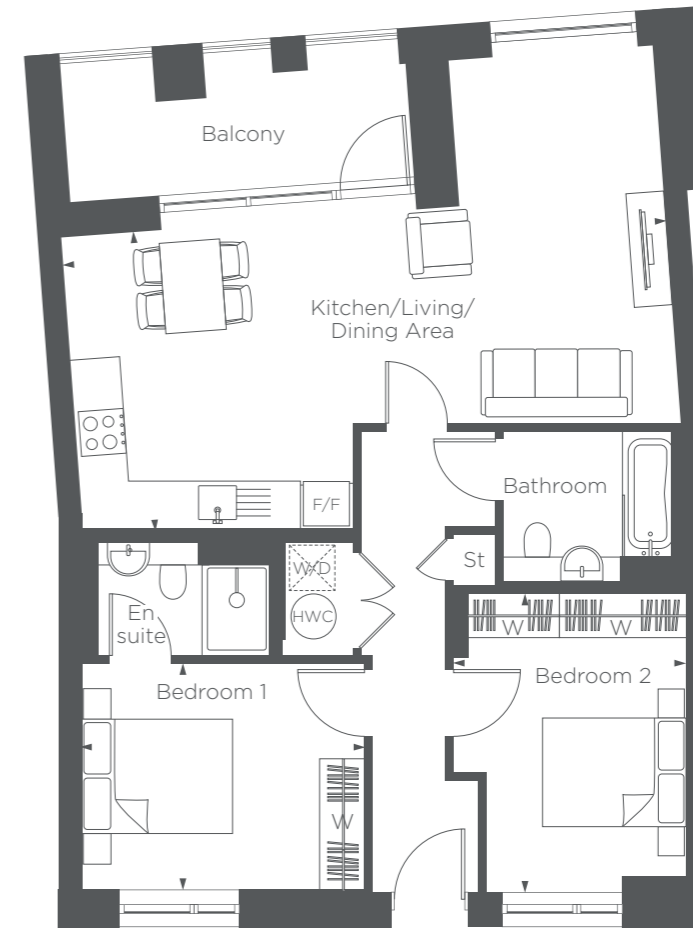


First floor

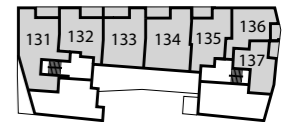
Kitchen/Living/Dining Area	6.15M x 4.18M	20'1" x 13'7"
Bedroom 1	4.35M x 2.76M	14'2" x 9'0"
Bedroom 2	3.43M x 3.25M	11'2" x 10'6"
Balcony	3.22M x 2.69M	10'5" x 8'8"

DUCKETT'S HOUSE

PLOT 120



Fourth floor



Third floor



Second floor



First floor

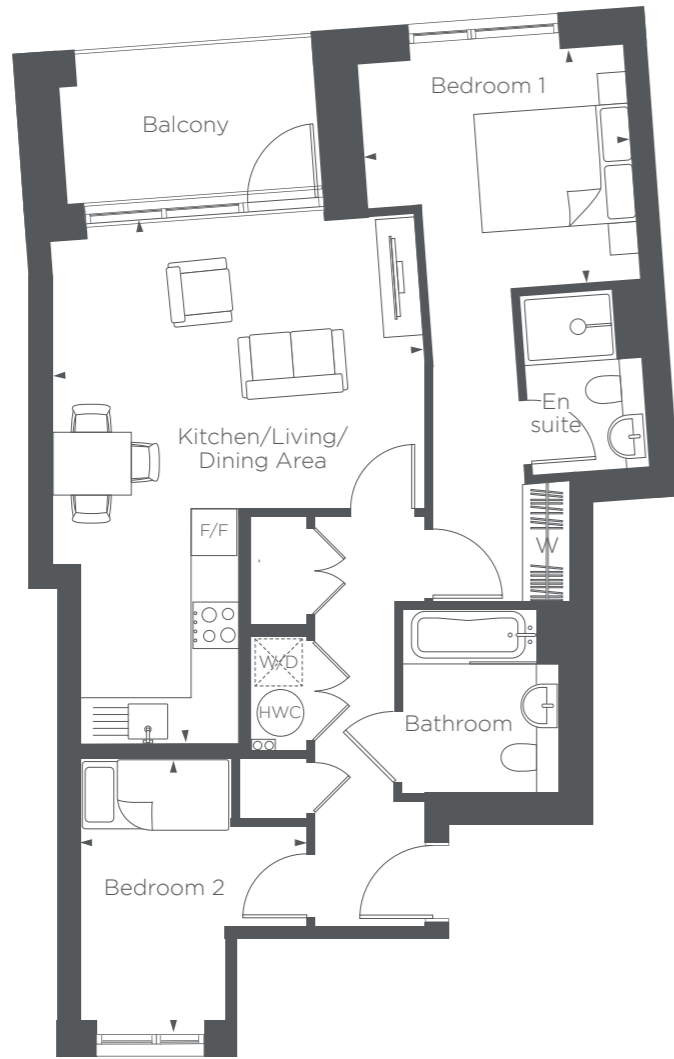
Kitchen/Living/Dining Area	8.02M x 3.98M	26'3" x 13'0"
Bedroom 1	3.75M x 3.21M	12'3" x 10'5"
Bedroom 2	3.97M x 3.08M	13'0" x 10'1"
Balcony	4.58M x 1.81M	15'0" x 5'9"

DUCKETT'S HOUSE

PLOT 140

F/F – Fridge/Freezer HWC – Hot Water Cylinder St – Store W/D – Washer Dryer W – Wardrobe
 Floorplans shown are indicative only. The kitchen layout and furniture positions are for indicative purposes only. All dimensions indicated are approximate and should not be relied upon for carpet sizes or items of furniture. The developer reserves the right to make changes to these plans prior to exchange of contracts. For exact plot specification, details of external and internal finishes, dimensions and floorplan differences, please speak to a member of our Sales Team for more details.

F/F – Fridge/Freezer HWC – Hot Water Cylinder St – Store W/D – Washer Dryer W – Wardrobe
 Floorplans shown are indicative only. The kitchen layout and furniture positions are for indicative purposes only. All dimensions indicated are approximate and should not be relied upon for carpet sizes or items of furniture. The developer reserves the right to make changes to these plans prior to exchange of contracts. For exact plot specification, details of external and internal finishes, dimensions and floorplan differences, please speak to a member of our Sales Team for more details.



Fourth floor



Third floor



Second floor



First floor

Kitchen/Living/Dining Area	5.17M x 4.74M	16'9" x 15'5"
Bedroom 1	3.41M x 3.26M	11'1" x 10'6"
Bedroom 2	4.94M x 2.90M	16'2" x 9'5"
Balcony	3.27M x 1.96M	10'7" x 6'4"

DUCKETT'S HOUSE

PLOTS 135 & 142



F/F – Fridge/Freezer HWC – Hot Water Cylinder St – Store W/D – Washer Dryer W – Wardrobe
 Floorplans shown are indicative only. The kitchen layout and furniture positions are for indicative purposes only. All dimensions indicated are approximate and should not be relied upon for carpet sizes or items of furniture. The developer reserves the right to make changes to these plans prior to exchange of contracts. For exact plot specification, details of external and internal finishes, dimensions and floorplan differences, please speak to a member of our Sales Team for more details.

DREAMING TO REALITY

SHARED OWNERSHIP
HOW IT COULD WORK FOR YOU...

HACKNEY | E3

Shared Ownership is a Government-backed initiative to help you get on the property ladder with a smaller deposit.

How does it work?

You initially purchase between 25% to 75% of the home's market value. You then pay subsidised rent on the remainder.

Am I eligible?

To be considered eligible for the Shared Ownership initiative your yearly income must be below £90,000 within London. If you already own a home, you must be in the process of selling it.

Will I need to pay a deposit?

In most cases, you will need 5 to 10% of the share percentage you are purchasing.

A recommended mortgage advisor will be able to advise you on the best options available to you, so please contact us for further advice. If the property's market value is £300,000 and you're buying 25%, then your proportion will be £75,000. This means you'll need a deposit of £3,750 alongside a mortgage of £71,250. You can also own the property outright by increasing your share to 100%.



Pay rent on
the remainder

— 75%

— 50%

— 25%

Buy 25% to 75%
of a property

Shared Ownership – Terms and conditions apply. This initiative is subject to status and fitting criteria. Minimum and maximum share values will apply and rent is payable on the unsold share. Please speak to a member of our Sales Team for more details.



VISIT US

0300 555 2171

Dace Road, Hackney, E3



DIRECTIONS

By train from Stratford station:

- Take the overground to Hackney Wick
- Walk south on White Post Lane towards Rothbury Road
- From Bow Road station, walk east on Bow Road/A11
- Turn left to stay on White Post Lane
- Turn right towards Capital Ring
- Turn left onto Capital Ring
- Turn right onto Dace Road

By car from A12:

- Merge onto N Circular Road/A406
- Use the left two lanes to take the A12 slip road to central London
- At Redbridge roundabout, take the 5th exit onto Eastern Avenue/A12
- Take the Old Ford exit towards B142
- Turn left onto Wick Lane
- At the roundabout, take the 2nd exit and stay on Wick Lane
- Turn right onto Monier Road
- At the roundabout, take the 3rd exit onto Dace Road





VODION

HACKNEY | E3

shnewhomes.co.uk/vodion

**SOUTHERN
HOUSING**
new homes


SITESALES
PROPERTY GROUP