



Persimmon
Together, we make your home



Redworthy Orchard

Yatton • North Somerset



Persimmon

Together, we make your home

Together, we make your home

When it comes to designing a new development, we apply the same philosophy every time – make it unique, make it personal. That's because we understand your new home is more than simply bricks and mortar. It's a private place of sanctuary where we hope you'll laugh, entertain and escape for many years to come.

"With over 50 years of building excellence, find out more about us on page 4"



5 stars!

We're proud of our 5 star builder status awarded by the national Home Builders Federation (HBF). It's a reflection of our commitment to delivering excellence always and putting our customers at the heart of all we do.



Redworthy Orchard

Find out more

About Persimmon Homes	4
Your journey with us and schemes to help	6
Living at Redworthy Orchard	9
Our homes	12
Specifications	24
Sustainability	26
Personalise with Finishing Touches	27
Reasons to buy from us	29
Proud to be building communities	30
Eco/Part L Homes	32



Who we are

A little bit about us

You're about to make one of the most exciting investments of your life! A beautiful place to call home for years to come. Here are some reasons to invest in a Persimmon home...

Over 50 years of expertise

We've been building homes and communities since the early seventies, and just as fashions have moved on, so too has construction. Over half a century we've perfected processes, fine-tuned materials and honed skills to make us one of today's most modern and progressive home builders.

Sustainability mission

We're committed to reducing our impact on the planet and building for a better tomorrow, with a dedicated in-house team focused on this. [Read more on page 26](#)

Persimmon in numbers

It's not all about numbers we know, but to give you sense of scale here are a few:

9,922

homes
delivered in
2023

200+

locations
across
the UK

4800+

employees
make it all
happen

452

acres of
public space
created

£2.3bn

invested in
local communities
over the last
5 years



"Building sustainable homes and community hubs"

Save money on your energy bills

The increased thermal retention from our insulation and double glazing, along with reduced water use thanks to efficient appliances, mean you'll automatically save money on your energy and water bills – and with the rising cost of living, this can make a real difference.



Take a look at the recently published HBF Watt a Save report to find out how much you could save.

The Persimmon Pledge

The Persimmon Pledge is our commitment to making sure you receive exceptional customer service and relevant communications before, during and after you've moved in.

Find out more about the Persimmon Pledge.



Accessible homes

It's crucial that your new home works perfectly for you and your needs. We build in line with Approved Document M accessibility requirements.



Scan the QR code to find out what each rating means.

Giving back

We do everything we can to give back to our communities and proudly contribute towards community hubs, children's play areas, schools and sports facilities.

Our 'Community Champions' and 'Building Futures' programmes help to raise funds for projects and charities across Great Britain. If you'd like to get involved visit persimmonhomes.com/community-champions to see if you could apply to support your local community.



Happy hour

We run Customer Construction Clinics from our on-site sales offices each Monday from 5-6pm. Pop in to see the team both during and after you've moved in to your new home.



10-year warranty

When you buy a Persimmon home it comes complete with a 'peace of mind' 10-year insurance-backed warranty and our own two-year Persimmon warranty.



Help when you need it

You'll have a dedicated customer care helpline, plus cover for emergencies like complete loss of electricity, gas, water or drainage.

Finishing Touches

We know you'll want to make your home your own, so we created 'Finishing Touches', our home personalisation service. **Read more on page 27**





With you all the way

Your journey with us

From finding your perfect new home to moving in,
we're here to help every step of the way.

1.→ 2.→ 3.

Reservation

So you've seen a home you love? Speak to one of our friendly sales advisors who will help you secure your dream home.

Solicitor

You'll need to instruct a solicitor or conveyancer at the point of reservation. Your sales advisor can recommend a local independent company.

Mortgage application

Most people will need to apply for a mortgage. We can recommend independent financial advisors to give you the best impartial advice.

4.→ 5.→ 6.

Personalise!

The bit you've been waiting for! Making the final choices for your new home. Depending on build stage you can also choose from a range of Finishing Touches.

Exchange contracts

One step closer to moving in – this is where we exchange contracts and your solicitor will transfer your deposit.

Quality assurance

Your home will be thoroughly inspected by site teams and will also have an Independent Quality Inspection to make sure it's ready for you to move into.

7.→ 8.→ 9.

Home demo

Another exciting milestone! Here's where you get to see your new home before completion. You'll be shown how everything works and any questions can be answered.

Handover

The moment you've been waiting for! The paperwork has been completed, the money transferred and now it's time to move in and start unpacking...

After-care

Our site and customer care teams will support you every step of the way. You'll receive a dedicated customer care line number to deal with any issues.

[persimmonhomes.com](https://www.persimmonhomes.com)



Need help?

One of the best things about buying a new-build home is the amazing offers and schemes you could benefit from. T&Cs apply.



**PART
EXCHANGE**



**HOME
CHANGE**



**EARLY
BIRD**



DEPOSIT UNLOCK

Deposit Unlock



**BANK OF MUM
AND DAD**

Bank of Mum
and Dad



DEPOSIT BOOST

Deposit Boost




**ARMED FORCES/KEY
WORKERS DISCOUNT**

Armed Forces/Key
Workers Discount



**OWN NEW
RATE REDUCER**

Own New

- 
- A modern kitchen with light grey cabinets, a white countertop, and a built-in oven. On the counter, there is a wooden cutting board, a white toaster, a metal container with utensils, a potted plant, and some food items. A dark apron hangs on the wall to the left.
- Range of 2, 3 and 4-bedroom homes
 - Sustainable, energy-efficient houses
 - Near to the coast and countryside
 - Close to Bristol, Bath and Gloucester



Scan me!

For availability and pricing on our beautiful new homes at Redworthy Orchard.



Yatton • North Somerset

Redworthy Orchard

With its energy-efficient two, three and four-bedroom homes, our Redworthy Orchard development is ideal for first-time buyers, families, and those looking for a new North Somerset base.

With the beautiful countryside of North Somerset on its doorstep and a community orchard to enjoy, Redworthy Orchard is a collection of modern new-build homes in a charming setting. Yatton's everyday amenities are within easy walking distance for the weekly shop, making this a best-of-both place to call home.

School days

Perfect for growing families, the village and surrounding area has a number of 'Outstanding' and 'Good' primary and secondary schools – including Yatton Junior and Infant School and Clevedon Secondary School. And for higher education, the university cities of Bristol and Bath both offer an excellent, well-respected range of courses.

Coast and countryside

For epic (local) days out in the countryside, the Mendip Hills National Landscape is under 20 minutes away by car. Plus, the historic landmark of Longleat and the Cranborne Chase National Landscape is just over an hour's drive. At the famous seaside town of Weston-super-Mare, memory-filled days by the sea are under 20 minutes away by train. And Portishead has a nature reserve, beach and open-air swimming pool to enjoy in the summer months.

Well connected

A big Yatton highlight is its proximity to Bristol Airport, which is only 20 minutes away by car, and under an hour by train plus a dedicated bus route. Served by an excellent network of A roads, the M5 is minutes away towards Clevedon, taking you through the heart of Somerset towards Devon, and north to Birmingham. Via Bristol, you also have a number of motorway routes available, including the M32, M4 and M49.

EXPLORE

Start exploring...

Weston-super-Mare
10.1 miles

Portishead
10.6 miles

Bristol
14.1 miles

Bath
25.5 miles

Our homes

2 bedroom

 **The Alnmouth**

3 bedroom

 **The Danbury**

 **The Dalby**

 **The Saunton**

 **The Sherwood**

 **The Charnwood**

 **The Charnwood Corner**

4 bedroom

 **The Gisburn**

 **The Whiteleaf**

 **The Whiteleaf Corner**

 **The Kielder**

 **Affordable Housing**





This site layout is intended for illustrative purposes only, and may be subject to change, for example, in response to market demand, ground conditions or technical and planning reasons. Trees, planting and public open space shown are indicative, actual numbers and positions may vary. This site plan does not form any part of a warranty or contract. Further information is available from a site sales advisor. The location of the affordable housing on this plan is indicative only and both the location and number of affordable housing plots may be subject to change.

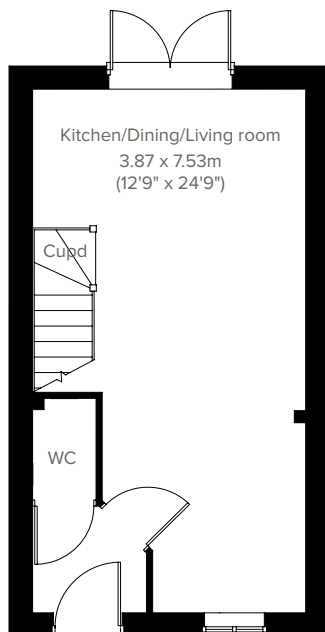


2 bedroom home

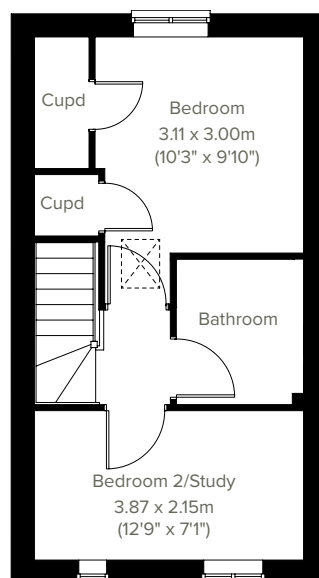
The Alnmouth



Perfectly-proportioned, the Alnmouth has a stylish open plan kitchen/dining/living room with French doors leading into the garden. It also features flexible first floor rooms, a good-sized family bathroom, three handy storage cupboards and off-road parking. Ideal if you're a first-time buyer looking for a fresh modern home you can make your own.



GROUND FLOOR



1ST FLOOR

Please note that elevation treatments and window/door positions may vary from plot to plot. Plot specific information will be confirmed on your reservation check list.

This information is for guidance only and does not form any part of any contract or constitute a warranty. Illustrations are of typical elevations and may vary. Floor plans are not drawn to scale and window positions may vary. Room dimensions are subject to a +/- 50mm (2") tolerance and are based on the maximum dimensions in each room. Please consult your sales advisor on site for specific elevations, room dimensions and external finishes. The EPC ratings are estimated and vary between home types, orientation and developments.

12

Predicted Energy Assessment: B

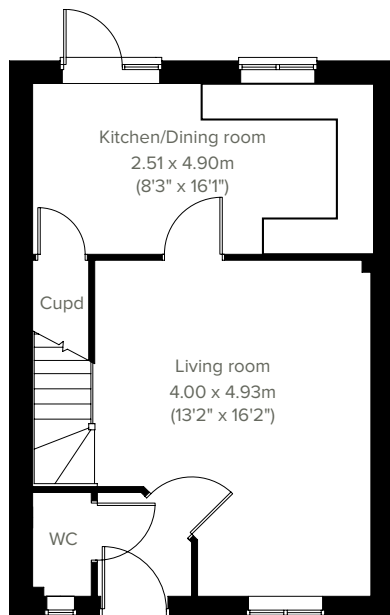


The Danbury

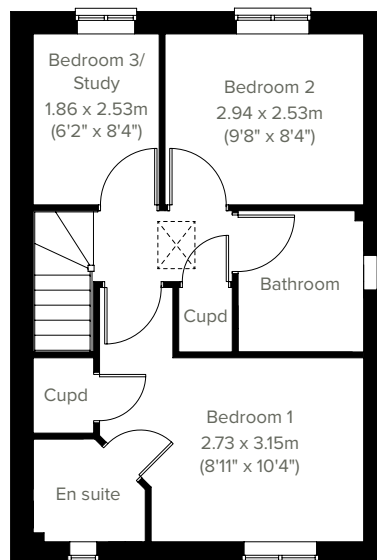
3 bedroom home



Perfect for the way we live today, the three-bedroom Danbury has a modern open plan kitchen/dining room with garden access and a spacious front-aspect living room that's ideal for entertaining. Upstairs there are three bedrooms - bedroom one has an en suite - and a family-sized bathroom. Appealing to families, first-time buyers and young professionals.



GROUND FLOOR



1ST FLOOR

Please note that elevation treatments and window/door positions may vary from plot to plot. Plot specific information will be confirmed on your reservation check list.

This information is for guidance only and does not form any part of any contract or constitute a warranty. Illustrations are of typical elevations and may vary. Floor plans are not drawn to scale and window positions may vary. Room dimensions are subject to a +/- 50mm (2") tolerance and are based on the maximum dimensions in each room. Please consult your sales advisor on site for specific elevations, room dimensions and external finishes. The EPC ratings are estimated and vary between home types, orientation and developments.

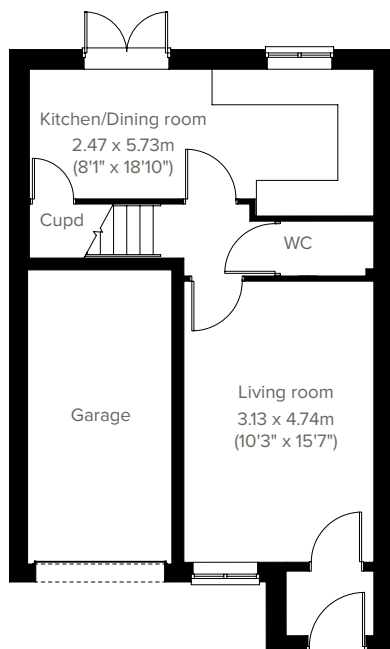


3 bedroom home

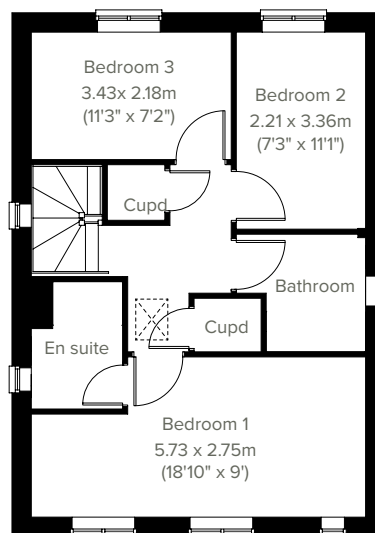
The Dalby



A thoughtfully-designed three-bedroom home with much to offer, the Dalby is popular with families. The light-filled modern open plan kitchen/dining room with French doors leading into the garden is ideal for entertaining and family meals. The front porch, downstairs WC and cupboards take care of everyday storage. Plus there's an en suite to bedroom one, family bathroom and integral garage.



GROUND FLOOR



1ST FLOOR

Please note that elevation treatments and window/door positions may vary from plot to plot. Plot specific information will be confirmed on your reservation check list.

This information is for guidance only and does not form any part of any contract or constitute a warranty. Illustrations are of typical elevations and may vary. Floor plans are not drawn to scale and window positions may vary. Room dimensions are subject to a +/- 50mm (2") tolerance and are based on the maximum dimensions in each room. Please consult your sales advisor on site for specific elevations, room dimensions and external finishes. The EPC ratings are estimated and vary between home types, orientation and developments.

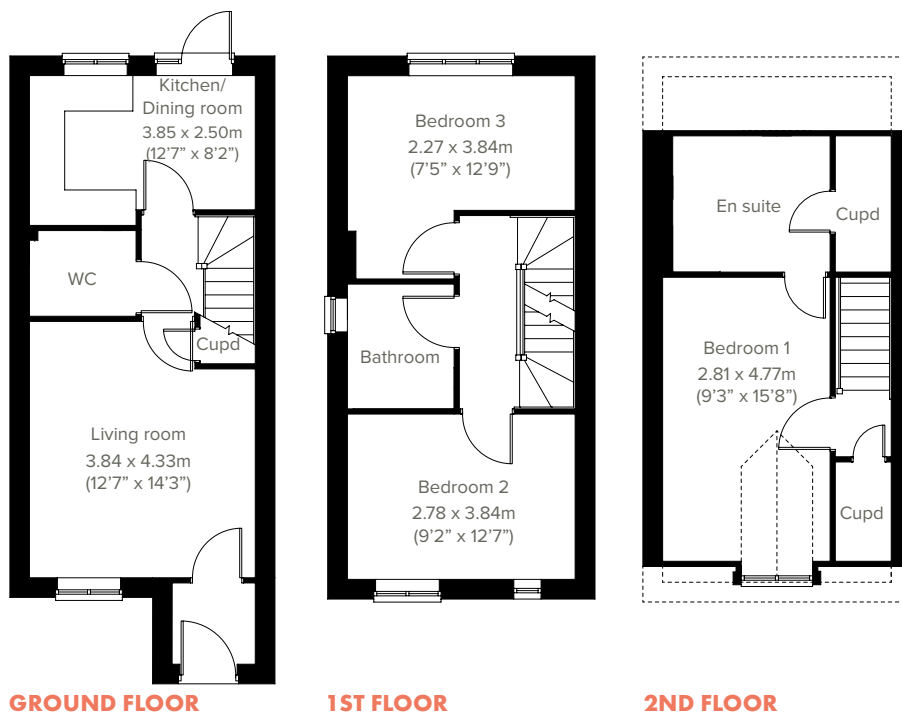


The Saunton

3 bedroom home



An attractive two and a half-storey, three-bedroom home, the Saunton has a modern open plan kitchen/dining room, a nicely-proportioned living room and three good-sized bedrooms. The enclosed porch, downstairs WC, three storage cupboards and off-road parking means it's practical as well as stylish. The top floor bedroom one also has a spacious en suite.



Please note that elevation treatments and window/door positions may vary from plot to plot. Plot specific information will be confirmed on your reservation check list.

This information is for guidance only and does not form any part of any contract or constitute a warranty. Illustrations are of typical elevations and may vary. Floor plans are not drawn to scale and window positions may vary. Room dimensions are subject to a +/- 50mm (2") tolerance and are based on the maximum dimensions in each room. Please consult your sales advisor on site for specific elevations, room dimensions and external finishes. The EPC ratings are estimated and vary between home types, orientation and developments.

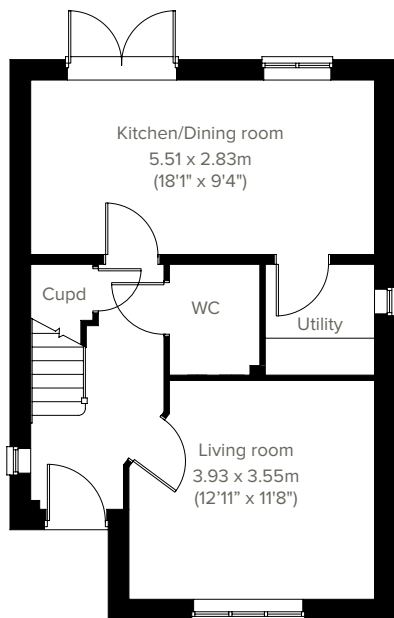


3 bedroom home

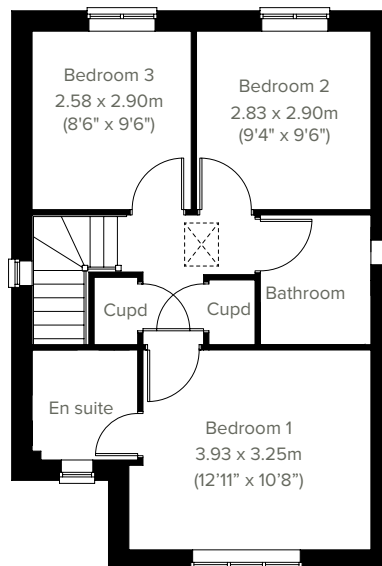
The Sherwood



A nicely-proportioned three-bedroom detached home, the Sherwood has everything you need for modern living. Downstairs there's an open plan kitchen/dining room with French doors leading to the garden, a front-aspect living room, downstairs WC, utility room and handy storage cupboard. The first floor is home to a generous bedroom one and an en suite plus two further bedrooms, two storage cupboards and a family bathroom.



GROUND FLOOR



1ST FLOOR

Please note that elevation treatments and window/door positions may vary from plot to plot. Plot specific information will be confirmed on your reservation check list.

This information is for guidance only and does not form any part of any contract or constitute a warranty. Illustrations are of typical elevations and may vary. Floor plans are not drawn to scale and window positions may vary. Room dimensions are subject to a +/- 50mm (2") tolerance and are based on the maximum dimensions in each room. Please consult your sales advisor on site for specific elevations, room dimensions and external finishes. The EPC ratings are estimated and vary between home types, orientation and developments.

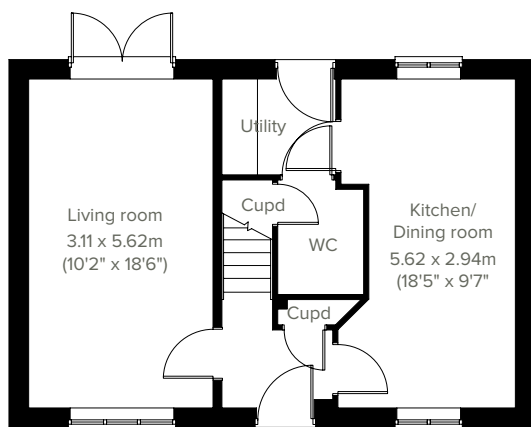


The Charnwood

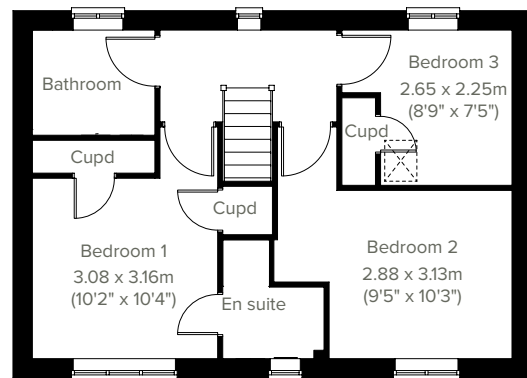
3 bedroom home



Enjoy the best of modern living in this popular three-bedroom home which features a stylish open plan kitchen/dining room and separate utility with garden access. The Charnwood features a bright dual-aspect living room with French doors leading into the garden, handy storage cupboards and downstairs WC. Upstairs there are three good sized bedrooms - bedroom one with an en suite - a good-sized family bathroom and further storage cupboards.



GROUND FLOOR



1ST FLOOR

Please note that elevation treatments and window/door positions may vary from plot to plot. Plot specific information will be confirmed on your reservation check list.

This information is for guidance only and does not form any part of any contract or constitute a warranty. Illustrations are of typical elevations and may vary. Floor plans are not drawn to scale and window positions may vary. Room dimensions are subject to a +/- 50mm (2") tolerance and are based on the maximum dimensions in each room. Please consult your sales advisor on site for specific elevations, room dimensions and external finishes. The EPC ratings are estimated and vary between home types, orientation and developments.

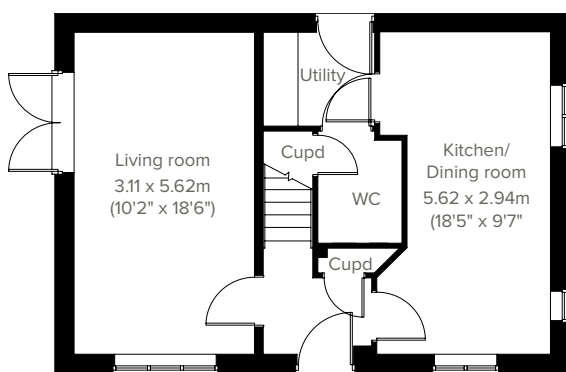


3 bedroom home

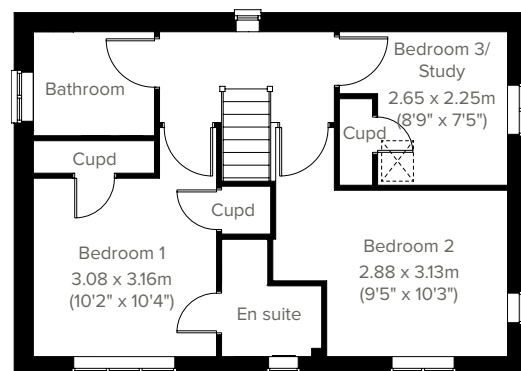
The Charnwood Corner



Enjoy the best of modern living in this popular three-bedroom home which benefits from a stylish open plan kitchen/breakfast room and separate utility with garden access. The Charnwood Corner features a bright dual-aspect living room with French doors leading into the garden, handy storage cupboards and downstairs WC. Upstairs there are three good sized bedrooms - bedroom one with an en suite - a family bathroom and further storage cupboards.



GROUND FLOOR



1ST FLOOR

Please note that elevation treatments and window/door positions may vary from plot to plot. Plot specific information will be confirmed on your reservation check list.

This information is for guidance only and does not form any part of any contract or constitute a warranty. Illustrations are of typical elevations and may vary. Floor plans are not drawn to scale and window positions may vary. Room dimensions are subject to a +/- 50mm (2") tolerance and are based on the maximum dimensions in each room. Please consult your sales advisor on site for specific elevations, room dimensions and external finishes. The EPC ratings are estimated and vary between home types, orientation and developments.

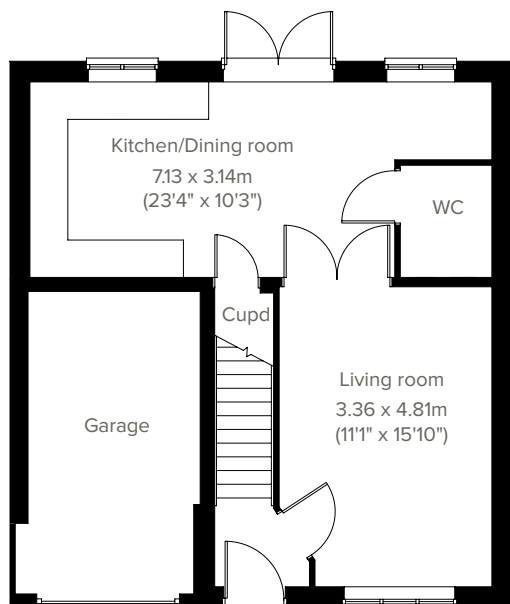


The Gisburn

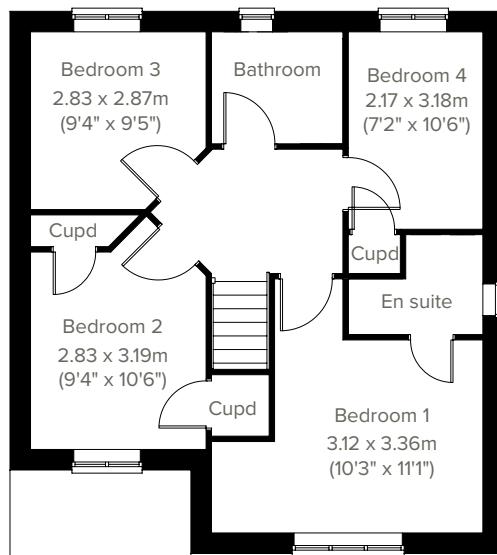
4 bedroom home



A fantastic family home, the Gisburn features a bright front-aspect living room leading to a stunning open plan kitchen/dining room with French doors opening into the garden. The WC and storage cupboard ensure it's practical as well as stylish. Upstairs you'll find four good-sized bedrooms, including bedroom one with an en suite, a family bathroom and handy storage cupboards.



GROUND FLOOR



1ST FLOOR

Please note that elevation treatments and window/door positions may vary from plot to plot. Plot specific information will be confirmed on your reservation check list.

This information is for guidance only and does not form any part of any contract or constitute a warranty. Illustrations are of typical elevations and may vary. Floor plans are not drawn to scale and window positions may vary. Room dimensions are subject to a +/- 50mm (2") tolerance and are based on the maximum dimensions in each room. Please consult your sales advisor on site for specific elevations, room dimensions and external finishes. The EPC ratings are estimated and vary between home types, orientation and developments.

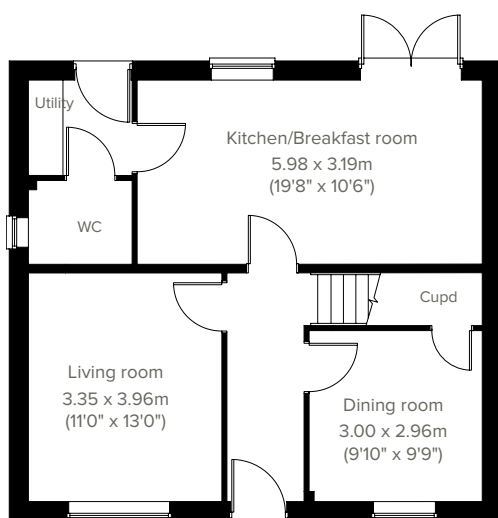


4 bedroom home

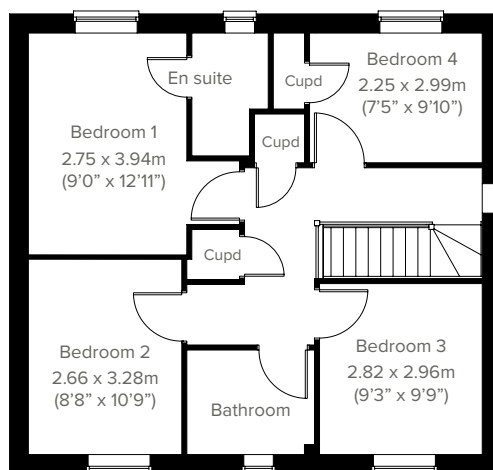
The Whiteleaf



The Whiteleaf is a four-bedroom detached family home offering the best of modern living. The light and airy kitchen/breakfast room enjoys an open aspect through French doors to the rear garden. There's a bright front-aspect living room, a dining room with storage space, a downstairs WC and handy utility. Upstairs there are four bedrooms, with bedroom one benefiting from an en suite, plus a modern-fitted family bathroom and three storage cupboards.



GROUND FLOOR



1ST FLOOR

Please note that elevation treatments and window/door positions may vary from plot to plot. Plot specific information will be confirmed on your reservation check list.

This information is for guidance only and does not form any part of any contract or constitute a warranty. Illustrations are of typical elevations and may vary. Floor plans are not drawn to scale and window positions may vary. Room dimensions are subject to a +/- 50mm (2") tolerance and are based on the maximum dimensions in each room. Please consult your sales advisor on site for specific elevations, room dimensions and external finishes. The EPC ratings are estimated and vary between home types, orientation and developments.

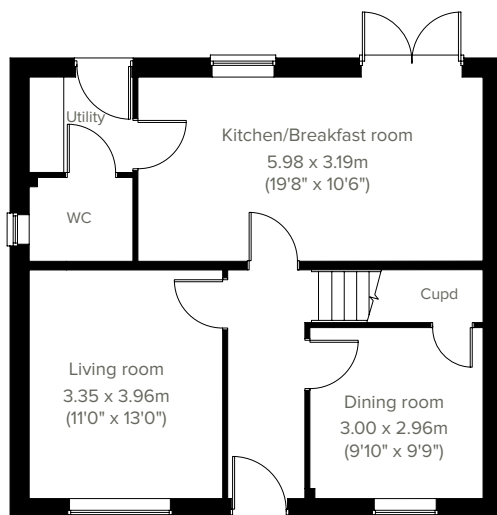


The Whiteleaf Corner

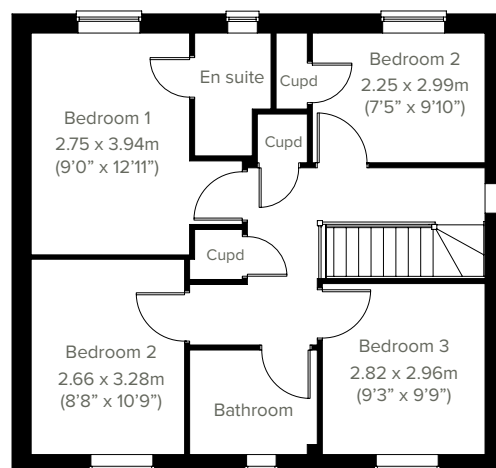
4 bedroom home



The Whiteleaf Corner has been designed with modern living in mind. This four-bedroom detached family home has a light and airy kitchen/breakfast room which enjoys an open aspect through French doors to the rear garden. There's a bright front-aspect living room, a separate dining room with a storage cupboard, a downstairs WC and handy utility. Upstairs there are four bedrooms, with bedroom one benefiting from an en suite, plus a modern-fitted family bathroom and three storage cupboards.



GROUND FLOOR



1ST FLOOR

Please note that elevation treatments and window/door positions may vary from plot to plot. Plot specific information will be confirmed on your reservation check list.

This information is for guidance only and does not form any part of any contract or constitute a warranty. Illustrations are of typical elevations and may vary. Floor plans are not drawn to scale and window positions may vary. Room dimensions are subject to a +/- 50mm (2") tolerance and are based on the maximum dimensions in each room. Please consult your sales advisor on site for specific elevations, room dimensions and external finishes. The EPC ratings are estimated and vary between home types, orientation and developments.

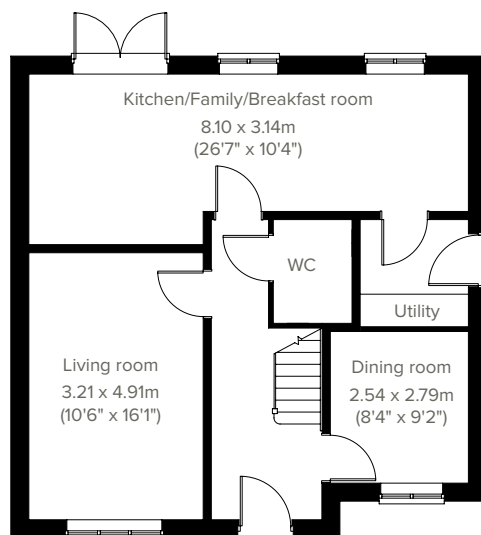


4 bedroom home

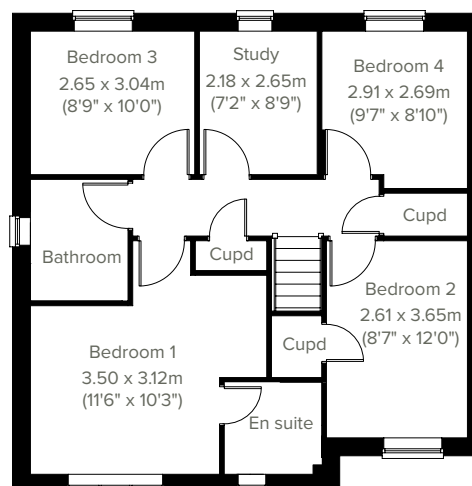
The Kielder



The Kielder is a popular detached family home. The modern and stylish open plan kitchen/family/ breakfast room is perfect for spending time as a family and entertaining. There's also a spacious living room, separate dining room, downstairs WC and handy utility with outside access. Upstairs there are four bedrooms - bedroom one has an en suite - a family bathroom, study and three storage cupboards.



GROUND FLOOR



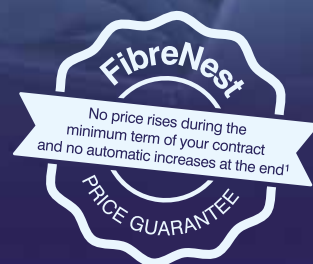
1ST FLOOR

Please note that elevation treatments and window/door positions may vary from plot to plot. Plot specific information will be confirmed on your reservation check list.

This information is for guidance only and does not form any part of any contract or constitute a warranty. Illustrations are of typical elevations and may vary. Floor plans are not drawn to scale and window positions may vary. Room dimensions are subject to a +/- 50mm (2") tolerance and are based on the maximum dimensions in each room. Please consult your sales advisor on site for specific elevations, room dimensions and external finishes. The EPC ratings are estimated and vary between home types, orientation and developments.



Your home, better connected
for a brighter future



Ultrafast 500Mb broadband is available
on this development.

FibreNest provides you with high-speed, totally unlimited
full-fibre broadband to your home, at great prices.



Choose the best package for you

We know every household is different, that's why we've put together six amazing packages to suit everyone's needs. From surfing the net on the sofa to binge-watching the latest box set, streaming music with friends to ruling the galaxy in the latest must-have game - we've got the service for you.



Scan me!
For packages & pricing.



0333 234 2220



support@fibrenew.com

Get connected today!

To sign up you will need your Unique Customer Reference.
Please ask your sales advisor for this:

C:

D:

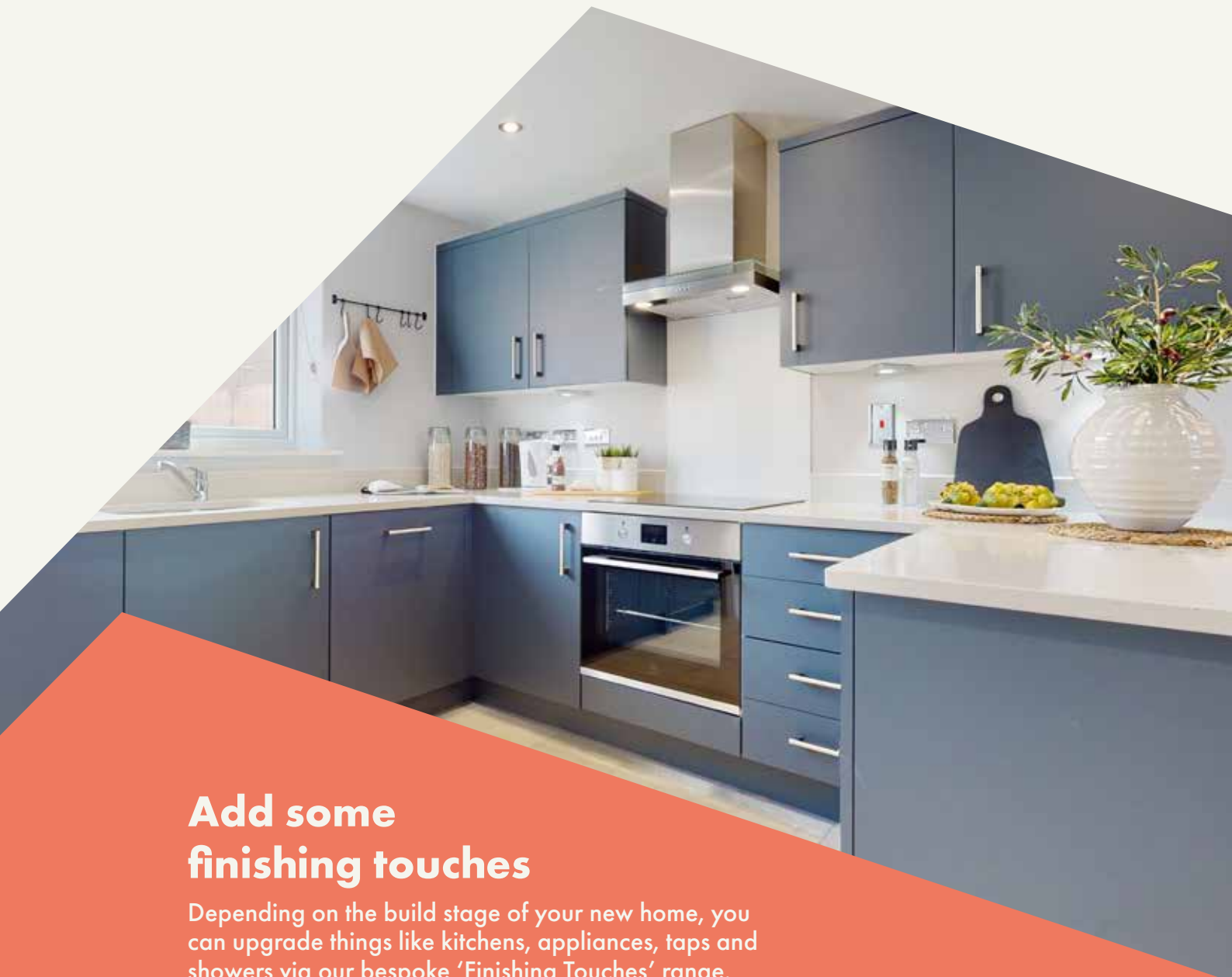
P:



Persimmon @ Redworthy Orchard

Specifications

Our homes include these items as standard to ensure you have everything you need to be comfortable from the day you move in. Built for today's modern lifestyles with sustainability in mind.



Add some finishing touches

Depending on the build stage of your new home, you can upgrade things like kitchens, appliances, taps and showers via our bespoke 'Finishing Touches' range.



External

Walls

Traditional cavity walls.
Inner: timber frame or block.
Outer: Style suited to planned architecture.

Roof

Tile or slate-effect with PVCu rainwater goods.

Windows

Double glazed E-glass windows in PVCu frames.

Doors

GRP-skinned external doors with PVCu frames.
French doors to garden or balcony
(where applicable).

Weatherproof box for future vehicle charging point.



Internal

Ceilings

Painted white.

Lighting

Pendant or batten fittings with low-energy bulbs.

Stairs

Staircase painted white.

Walls

Painted in white emulsion.

Doors

White painted internal doors with white hinges.

Heating

Gas fired combi boiler with radiators in all main rooms, with thermostatically-controlled valves to bedrooms.

Insulation

Insulated loft to meet current building regulations.

Electrics

Individual circuit breakers to consumer unit and double electric sockets to all main rooms.

General

Media plate incorporating TV and telecommunication outlets to living room.

Kitchen

General

Fully-fitted kitchen with a choice of doors and laminate worktop with upstands to match (depending on build stage) with soft closure to all doors and drawers.

Plumbing

Plumbing for washing machine.

Appliances

Single electric stainless steel oven, gas hob, chimney hood and splash-back.



Bathroom

Suites

White bathroom suites with chrome-finished fittings.

Extractor fan

Extractor fan to bathroom and en suite (where applicable).

Shower

Mira shower with chrome fittings to en suite. Where there is no en suite, handheld mixer tap - no shower screen or tiling

Tiling

Splashback to sink area and around bath. Full height tiling to shower enclosure within en suite

General

En suite to bedroom(s) where applicable.



Security

Locks

Three-point locking to front and rear doors, locks to all windows (except escape windows).

Fire

Smoke detectors wired to the mains with battery back-up.



Garage & Gardens

Garage

Garage, car ports or parking space.

Garden

Front lawn turfed or landscaped (where applicable).

Fencing

1.8 metre fence to rear garden, plus gate.





Energy efficiency built in

Sustainability

Our homes are typically 30% more efficient than traditional UK housing, helping you to save money and reduce your impact on the environment.

We're proud that we already build our homes to high levels of energy efficiency, but there's still a way to go. Our in-house sustainability team is dedicated to our mission to have net zero carbon homes in use by 2030, and for our own operations to be net zero carbon by 2040.

To achieve this, we're working to science-based carbon reduction targets in line with the Paris Agreement's 1.5°C warming pledge, investing in low-carbon solutions and technology that will further reduce the carbon footprints of our homes and our impact on the planet.

Energy efficiency built in:

- ✓ **PEA rating – B**
Our typical B rating makes our homes much more efficient than traditional D-rated homes.
- ✓ **Up to 400mm roof space insulation**
Warmer in winter, cooler in summer, reducing energy bills.
- ✓ **Argon gas filled double glazing**
Greater insulation and reduced heat loss.
- ✓ **Energy efficient lighting**
We use energy-saving LED lightbulbs in all our homes.
- ✓ **A-rated appliances**
Many of our kitchen appliances have a highly efficient A rating.
- ✓ **A-rated boilers**
Our condenser boilers far outperform non-condensing ones.
- ✓ **Local links**
We're located close to amenities and public transport to help reduce your travel footprint.
- ✓ **Ultra-fast broadband**
FibreNest fibre-to-the-home connectivity helps you live and work at home more flexibly.
- ✓ **Lower-carbon bricks**
Our concrete bricks typically use 28% less carbon in manufacture than clay, giving total lifetime carbon savings of 2.4 tonnes of CO₂ per house built.



Your home, your way

Finishing Touches to make it yours

Our goal is to make your house feel like your home before
you've even collected the keys.

Key to achieving this is giving you the creative freedom to add your own style and personality to every room through our fabulous Finishing Touches collection.

Featuring the very latest designs from a host of leading brands, Finishing Touches lets you personalise your home inside and out. And rest assured, every upgrade and item available has been carefully chosen to complement the style

and finish of your new home. Of course, the real beauty is that all these extras will be ready for the day you move in.

Thanks to our impressive buying power we can offer almost any upgrade you can imagine at a highly competitive price. It can all be arranged from the comfort and convenience of one of our marketing suites, in a personal design appointment.

You can choose:



Kitchens



Appliances



Bathrooms



Flooring



Wardrobes



Fixtures & fittings

"One of the most exciting
things about buying
a brand new home is
putting your own stamp
on a blank canvas."



Your modern home

Space4 is one of the UK's leading producers of precision-engineered construction systems, aiming to include their PEFC-certified sustainable timber frames in 50% of homes by 2025.

Many Persimmon homes already benefit from Space4's modern method of construction, with its technology offering improved insulation and air-tightness. For you, this means a reduction of 50% in heating costs compared to the average home in the UK*, plus you'll own a cosier, more comfortable home.

On the outside, your Space4 home will feature the familiar design of a Persimmon home which uses traditional materials such as brick, stone or render. Underneath, the hi-tech timber frame backbone creates new levels of efficiency and building rigidity. Your property will be durable and finished to an excellent standard.

High-performance insulation, together with Space4 construction, an efficient boiler, and attention to air-tightness and ventilation during the construction process, means that our homes can use 59% less gas than the average home in the UK*.

The use of Space4 technology creates a better place to live and work. Lower consumption of heating fuels and transport helps reduce CO2 emissions, while sustainable, recyclable materials create less impact on the wider environment. The overall carbon dioxide emissions for timber construction (the embodied carbon dioxide) are up to six times lower than for masonry.*

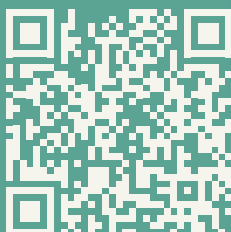
Concerning the Government's code for sustainable homes, most building elements with timber specifications largely fall into the 'A+' or 'A' rated categories compared to masonry**.

50% lower energy bills

According to recent research by the HBF, those who live in new build homes constructed to today's standards could save more than £3,100 a year on their energy bills compared to neighbours in older homes.* This means families could save approximately £77,500 over the lifetime of a 25-year mortgage.

Scan me!

For the HBF Watt a Save report Feb 2023.





6 reasons why it pays to buy new

Did you know?

Most of the benefits of buying new are obvious, but some are not. Here's a quick summary of the key reasons why it's such a smart move:

1.

No chain

Few things are more annoying in the home buying process than a time-consuming chain you can't control. Buying new limits the chance of getting involved in one.

2.

Energy efficient

Our homes include cost-effective combi boilers, first-rate loft insulation and draught-free double glazed windows to meet stringent energy-efficient standards, keeping your energy bills as low as possible.

3.

Brand new

Absolutely everything in your new home is brand new. You get all the latest designs and tech, complete with manufacturers' warranties. Win-win.

4.

More ways to buy

We offer a range of schemes to help get you on the property ladder, including Home Change and Part Exchange.

5.

10 year warranty

All our new homes come with a ten-year, insurance-backed warranty, as well as our own two-year Persimmon warranty. In the unlikely event you ever need to claim, our Customer Care Team are there to help you.

6.

Safe & secure

All our homes are built from fire-retardant materials and come with fitted smoke alarms and fire escape windows. They're also far more secure than older buildings thanks to the security locks and lighting we use.



All about community

Proud to be building communities

When creating Redworthy Orchard, not only did we create a lovely local environment for you and your family, we also contributed to the wider community.

Throughout the development process, we proactively engage with local communities and work closely with planning authorities. Redworthy Orchard has achieved the right balance of homes and open space and the right mix of house types for a thriving community.

We also include much-needed homes for our Housing Association partners. Our plan enhances local facilities too, providing investment in local infrastructure such as transport, education and recreation facilities, as well as initiatives to generate biodiversity.



“We’ve actively enhanced biodiversity at Redworthy Orchard.”

EDUCATION

£258k contribution towards secondary education transport.

HOUSING

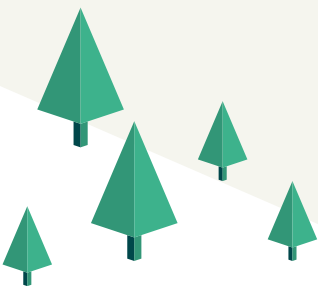
Affordable housing provision.

SPORTS PITCHES

£140k contribution towards sports pitches.

COMMUNITY SPACES

Public open spaces including children's play area and orchard.



Eco Range homes

New build homes are changing, and together, we're embracing the future. Recent updates to the Government's Part L building regulations mean from June 2023 our new Persimmon Eco Range homes will have a reduction of 31% in carbon emissions. This means a warmer, more energy-efficient home for you and the really cosy feeling of knowing it's better for the environment.

This means... **a saving of up to £6,730*** over the lifetime of a 25 year mortgage.



31 % reduction in carbon emissions

Solar panels help boost your existing energy-efficient boiler using sustainable green energy. For full details of the number of solar panels (where applicable) and the location; please refer your sales advisor for details.

EV charging is a handy addition if you have an electric car, as you can charge it from the comfort of your own home. NB: Not all homes will have EV chargers as they're site and plot dependent. They can be added from our Finishing Touches range.

Enhanced loft insulation is a huge cosy blanket that slows down the transfer of heat between your home and the outside world. It not only warms your home in the winter but keeps it cooler in the summer.

Waste water heat recovery ensures the waste water from the shower heats the incoming cold water as it goes up the pipe so that the boiler doesn't have to work as hard to heat it.

More thermally-efficient walls mean less heat escaping, so you aren't as dependent on central heating, and whatever heat is generated is kept in your home.

Our panelised offsite-manufactured timber frame technology uses a unique, sustainable panel system which adds to the thermal efficiency of your home. *NB: not all homes will be built using timber frame technology.

Energy-efficient boilers use the latest technology to warm your already well-insulated home. The controls allow you to optimise your energy saving whilst keeping you comfortable.

A more thermally-efficient ground floor will mean you'll benefit from the additional insulation we're incorporating in the floor construction.

*When compared to a Victorian-built equivalent, savings could be up to £31,640. The £6,730 saving is in comparison to a Persimmon home built to current building regulations (2013).[†]NB: not all homes will be built using timber frame technology.

[†]NB: Not all homes will have EV Chargers, but they can be added from our Finishing Touches range.



**And did we mention you'll have
more time for dancing?**

Buying new means you'll spend far less time on repairs and maintenance, after all, life's too short to spend every weekend doing DIY.



Redworthy Orchard

Moor Road

Yatton

BS49 4AX

T: 01934 249 694

E: redworthyorchard.sval@persimmonhomes.com

persimmonhomes.com/redworthy-orchard

Head Office

Persimmon Homes Severn Valley

Davidson House

106 Newfoundland Way

Portishead

Bristol

BS20 7QE

T: 01275 396 000

E: sval.sales@persimmonhomes.com

persimmonhomes.com



Issue: December 2024 Ref: 380-391

Persimmon plc, Registered office: Persimmon House, Fulford, York YO19 4FE Registered in England no: 1818486

Redworthy Orchard is a marketing name only. The copyright in this document and design is confidential to and the property of Persimmon Homes Developments 2024. These details are intended to give a general idea of the type of home but they do not form part of any specification or contract. The dimensions are approximate and may vary depending on internal finish. By the time you read this some of the details may have changed because of the Persimmon Homes policy of continually updating and improving design features. Therefore, please be sure to check the plan and specification in the sales office to keep you up-to-date with the latest improvements. The vendors of this property give notice that: (i) the particulars are produced in good faith, are set out as a general guide only and do not constitute any part of a contract; (ii) no person in the employment of Persimmon Homes or their authorised agents has any authority to make or give any representation or warranty whatever in relation to this property. Persimmon Homes is compliant with the New Homes Quality Code. Please ask your sales advisor if you have any further questions.