

Wyvern Place

WIVENHOE, ESSEX

2, 3 & 4 bedroom houses and 1 bedroom apartments.
Ideally situated in the charming riverside town of Wivenhoe.

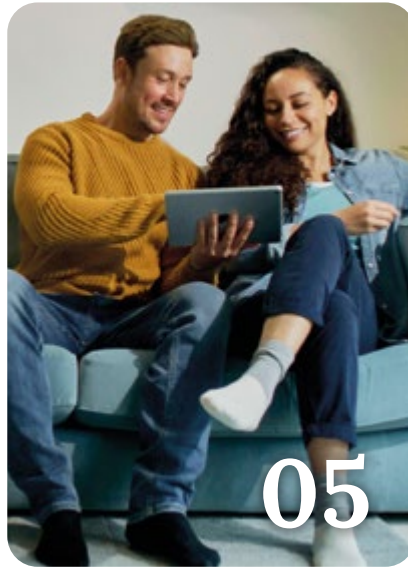
Taylor
Wimpey

Contents

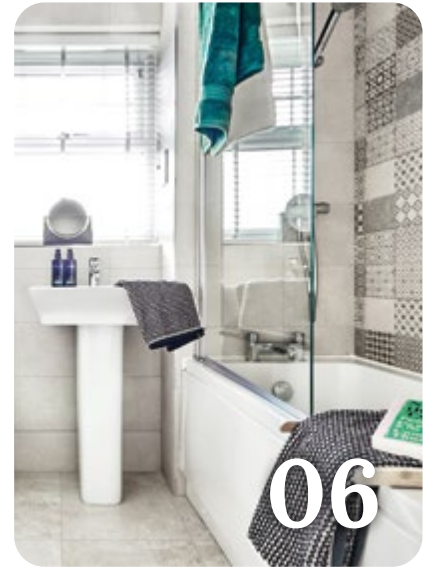
→ **Welcome to
Wyvern Place**



→ **Personalise
your home**



→ **Included
as standard**



→ **Our homes**



→ **Ways to buy**



→ **Take your
next step**



Welcome to Wyvern Place

Situated in Wivenhoe, Wyvern Place is the perfect place to put down roots. This new collection of apartments & houses is suited for all modern lifestyles with flexible layouts, making our homes in Wivenhoe ideal for first-time buyers, families, and downsizers. This new community will offer a sports field, a play area, and open green spaces.



[→ View the site plan](#)

Love living in Wivenhoe

Enjoy the vibrant riverside town, featuring independent restaurants, shops, cafés, and pubs. You'll find plenty of green open spaces, including the renowned Wivenhoe Trail, a picturesque walk from Wivenhoe to Colchester through rivers and fields.

Wivenhoe also provides the perfect place to raise a family with a variety of schools nearby.

Stay connected with Wivenhoe station, offering high-speed trains to London. Convenient road links nearby ensure easy travel across the country.

River walks



Riverside pubs



Green open space



[View the development](#)



Personalise your home

A new Taylor Wimpey home is a blank canvas, ready for you to put your stamp on even before you move in.

You can choose from a range of high-quality options for your kitchen, bedroom and bathroom to suit your taste – and all from the comfort of your own sofa. We offer a range of contemporary and traditional kitchen units and patterned or plain tiles for your bathroom, so whatever your preferred style, we've got you covered.

Using our innovative Options Online tool, you can visualise your new home room-by-room and customise each one as you go. For example, across different rooms, you can select your personal favourite from our extensive range of flooring, which includes luxury carpet, LVT, vinyl and tiles. You can also choose your options with the help of your Sales Executive if you'd prefer.

Our customers have created some fantastic spaces in their homes and you can get inspiration from their choices by following us on Instagram. You can also check out a host of interior design tips on our website.

[→ Find out more](#)



Options availability is subject to build stage of plots and options won't be available if plots have reached a certain build stage. Please contact your Sales Executive for further information.

Included as standard

From the external features to the finishing touches, every detail of our homes is designed with our customers in mind.

While you'll have the choice to upgrade, all our houses are fitted with a range of high-quality features at no extra cost to you.

You'll find a complete list of all items that come as standard in your house below.



Kitchens

All our kitchens are fitted with beautiful units and worktops. You can choose your preferred style and colour to create your perfect cooking and entertaining space.

A range of accessories including stainless steel splashbacks, composite sink and chrome taps give your kitchen a clean, contemporary finish. You'll get a modern, energy-efficient oven with built-in hob, integrated hood and extractor fan too.

Utility rooms[†]

Units will be fitted to match your chosen kitchen style, complete with a sink and tap. If your home has a toilet in the utility room, we'll fit a contemporary white basin and toilet for a sleek finish.



Bathrooms, en suites and shower rooms

Modern white sanitaryware, including toilet, basin and bath with chrome taps, give your main bathroom a clean look. The matching sanitaryware is fitted in en suites and shower rooms, which also benefit from a shower and glass enclosure.

For a distinct look, we offer a varied range of ceramic wall tiles for you to choose from to make your bathroom and en suite stand out from the crowd.



Garden[†]

The outside of your home is just as carefully considered as the inside. You'll get a fully turfed and landscaped front garden, including plants. The back garden includes a slabbed area and turf, your privacy is protected by a garden fence or wall.



Options, upgrades and colour choices are available subject to stage of construction

All of the specification listed is included in our houses as standard. For the specification included in our apartments, please see the separate apartment specification list. Standard specifications are correct at time of going to print, but are subject to change without notice. Please contact your Sales Executive for further information. † = Where applicable.

Specification of our houses

Kitchens	
Fitted integrated kitchen with a choice of door fronts	✓
1.5 bowl composite sink and choice of post formed laminate worktops with matching upstands	✓
Single stainless steel electric oven with built in 60cm ceramic hob	✓
60cm integrated hood with stainless steel splashback above hob	✓
Integrated washing machine	✓
70/30 fridge freezer	✓
Space for a tumble dryer, 4 bedroom homes only (design dependent)	✓
60cm dishwasher (or 45cm slimline dishwasher integrated depending on design)	✓
Bathrooms, en suites, utility and cloakrooms	
White sanitaryware with maximum 180 litre bath	✓
Chrome taps and fittings	✓
Thermostatic shower to bathroom and en suite with over bath shower screen	✓
Batten/pendant light to wet areas	✓
Shaving socket to en suite or main bathroom (if no en suite)	✓
Central heating/hot water system	
Fully programmable gas central heating providing hot water	✓
White thermostatic controlled radiators with TVR	✓
Cavity wall insulation	✓
Loft insulation in line with building regulations	✓
Electrical features	
Power point in line with NHBC requirements	✓
One double socket in kitchen to incorporate USB charging points	✓
Light/fan switches to bathrooms	✓
Media plate to living room	✓
Single TV socket and two double sockets to incorporate USB charging points in Bedroom one	✓
Shaving socket to en suite or main bathroom (if no en suite)	✓
Light and Power to Garage if within Plot curtilage	✓
Wire for Sky+ package	✓
EV chargers - See site plan for location	✓

✓ = Standard features

All of the specification listed is included in our houses as standard. For the specification included in our apartments, please see the separate apartment specification list. Standard specifications are correct at time of going to print, but are subject to change without notice. Please contact your Sales Executive for further information.

Specification of our houses

Finishing touches	
White emulsion to walls and ceilings	✓
White paint to woodwork	✓
White Vaicaima doors with chrome ironmongery	✓
Windows and doors	
GRP front entrance door, insulated and pre-finished	✓
Chrome effect letter plate	✓
180 degree door viewer chrome effect	✓
Chrome security chain	✓
GRP personnel garage door where shown on drawings	✓
uPVC triple glazed windows, with trickle ventilation, draught sealed, security lock and easy clean hinges	✓
Polished chrome door numerals	✓

 **Find out more**

✓ = Standard features

All of the specification listed is included in our houses as standard. For the specification included in our apartments, please see the separate apartment specification list. Standard specifications are correct at time of going to print, but are subject to change without notice. Please contact your Sales Executive for further information.



Personalise your apartment

A new Taylor Wimpey home is a blank canvas, ready for you to put your stamp on even before you move in.

You can choose from a range of high-quality options for your kitchen, bedroom and bathroom to suit your taste – and all from the comfort of your own sofa. We offer a range of contemporary and traditional kitchen units and patterned or plain tiles for your bathroom, so whatever your preferred style, we've got you covered.

Using our innovative Options Online tool, you can visualise your new home room-by-room and customise each one as you go. For example, across different rooms, you can select your personal favourite from our extensive range of flooring, which includes luxury carpet and LVT. You can also choose your options with the help of your Sales Executive if you'd prefer.

Our customers have created some fantastic spaces in their homes and you can get inspiration from their choices by following us on Instagram. You can also check out a host of interior design tips on our website.

[→ Find out more](#)



Options availability is subject to build stage of plots and options won't be available if plots have reached a certain build stage. Please contact your Sales Executive for further information.

Included as standard

From the external features to the finishing touches, every detail of our apartments is designed with our customers in mind.

While you'll have the choice to upgrade, all our apartments are fitted with a range of high-quality features at no extra cost to you.

You'll find a complete list of all items that come as standard in your apartment below.



Kitchens

All our kitchens are fitted with beautiful units and worktops. You can choose your preferred style and colour to create your perfect cooking and entertaining space.

A range of accessories including stainless steel splashbacks, composite sink and chrome taps give your kitchen a clean, contemporary finish. You'll get a modern, energy-efficient oven with built-in hob, integrated hood and extractor fan too.

Bathrooms

Modern white sanitaryware, including toilet, basin and bath with chrome taps, give your main bathroom a clean look.

For a distinct look, we offer a varied range of ceramic wall tiles for you to choose from to make your bathroom stand out from the crowd.



Internal doors

Modern doors, complete with polished chrome handles, give a sleek, contemporary feel throughout your home. From the main bedroom to the bathroom, each door is of the same high specification.



Electrics

An intercom system will finish the exterior of your apartment. Smoke alarms will also be fitted.



All of the specification listed is included in our apartments as standard. For the specification included in our houses, please see the separate house specification list. Standard specifications are correct at time of going to print, but are subject to change without notice. Please contact your Sales Executive for further information.

Specification of our apartments

Kitchens	
Fitted integrated kitchen with a choice of door fronts	✓
1.5 bowl composite sink and choice of post formed laminate worktops with matching upstands	✓
Single stainless steel electric oven with built in 60cm ceramic hob	✓
60cm integrated hood with stainless steel splashback above hob	✓
Integrated washer/dryer	✓
70/30 fridge freezer	✓
60cm dishwasher (or 45cm slim line dishwasher integrated depending on design)	✓
Bathrooms	
White sanitaryware with maximum 180 litre bath	✓
Chrome taps and fittings	✓
Thermostatic shower to bathroom and fixed shower screen	✓
Batten/pendant light to wet areas	✓
Shaving socket	✓
Central heating/hot water system	
Fully programmable gas central heating providing hot water	✓
White thermostatic controlled radiators with TVR	✓
Cavity wall insulation	✓
Loft insulation in line with building regulations	✓
Electrical features	
Power point in line with NHBC requirements	✓
One double socket in kitchen to incorporate USB charging points	✓
Light/fan switches to bathrooms	✓
Media plate to living room	✓

✓ = Standard features

All of the specification listed is included in our apartments as standard. For the specification included in our houses, please see the separate house specification list. Standard specifications are correct at time of going to print, but are subject to change without notice. Please contact your Sales Executive for further information.

Specification of our apartments

Electrical features cont.

Batten/Pendant ceiling light	✓
Single TV socket and two double sockets to incorporate USB charging points in bedroom	✓
Wire for Sky+ package	✓
Feeder pillar EV chargers	✓

Finishing touches

White emulsion to walls and ceilings	✓
White paint to woodwork	✓
White Vicaima doors with chrome ironmongery	✓
Full height tiling to walls around bath area with half height to walls with sanitaryware	✓
Amtico to hallway, bathrooms, kitchen and living rooms	✓
Carpet to bedroom	✓

Windows and doors

Front entrance doors	✓
Chrome numerals	✓
uPVC triple glazed windows, with trickle ventilation, draught sealed, security lock and easy clean hinges	✓

Security and safety

Mains-operated smoke detectors supplied in line with building regulations	✓
Intercom for apartments	✓

NHBC 10 year warranty

NHBC 10 year Buildmark policy	✓
Taylor Wimpey warranty for 2 years from date of legal completion	✓

Window guards

Window guards are installed at first floor and above to comply with part L regulation	✓
---	---



Find out more

✓ = Standard features

All of the specification listed is included in our apartments as standard. For the specification included in our houses, please see the separate house specification list. Standard specifications are correct at time of going to print, but are subject to change without notice. Please contact your Sales Executive for further information.

Optional Upgrades

Kitchen

Upgrade to Option 2 Kitchen Design featuring Glass splashbacks, Chimney Hood, Pull out Larders and LeMans carousel (where design permits)

Double oven or single oven and microwave in tall housing (where design permits)

Silestone worktop and splashback

Upgrade to Ceramic/ induction hobs

Tumble Dryers to utility (4 bed+ properties where design permits)

Bathroom

Upgrade taps

Extend wall tiling to ½ or full height

Upgraded wall tile when ½ or full height selected

Mirror above basin when ½ height tiling selected

Accent/main tile available when 1/2 or full height tiling selected

Upgrade to Rainfall shower head in Ensuite

Soft close toilet seat

Electrical

Extra double socket with or without USB port in white or chrome

Extra TV point in white or Chrome

Fused spurs in White or Chrome

Alarm system

Weatherproof external socket

Additional shaver socket

Electrical cont.

Upgrade all sockets and switches from white to chrome

White or Chrome Downlighters to wet rooms only (subject to Design)

Wardrobes

A range of mirrored, hinged and sliding wardrobes available

Flooring

Choices of various qualities and colours

Ceramic floor tiles (available to ground floor only)

Home Office

A range of Office layouts in a choice of contemporary finishes, cabinetry and door & drawer front colours

Understairs Storage

Subject to design

Blinds

A range of options/colours available



Find out more

All of the specification listed is included in our houses as standard. For the specification included in our apartments, please see the separate apartment specification list. Recent changes in building regulations may affect the energy performance calculation on some new build homes. This means that the addition of a shower over a bath as an upgrade may no longer be available on selected homes. Please speak to our Sales Executive to find out more. Standard specifications are correct at time of going to print, but are subject to change without notice. Please contact the Sales Executive for further information. These are the only options available and are subject to stage of construction. We will not be able to accommodate any changes to the specification or layout other than the options available. Options are correct at time of going to print, but are subject to plot size.

Our homes

→ 1 bedroom apartments



→ 2 bedroom homes



→ 3 bedroom homes



→ 4 bedroom homes



→ [View the site plan](#)



Block B

1 BEDROOM APARTMENTS



PLOTS 72, 74 & 76

Kitchen/Living/Dining area

6.24m × 3.95m 20'4" × 12'9"

Bedroom 1

4.18m × 2.99m 13'7" × 9'8"



PLOTS 73, 75, 77

Kitchen/Living/Dining area

6.24m × 3.95m 20'4" × 12'9"

Bedroom 1

4.18m × 2.99m 13'7" × 9'8"



[Discover more about this home](#)



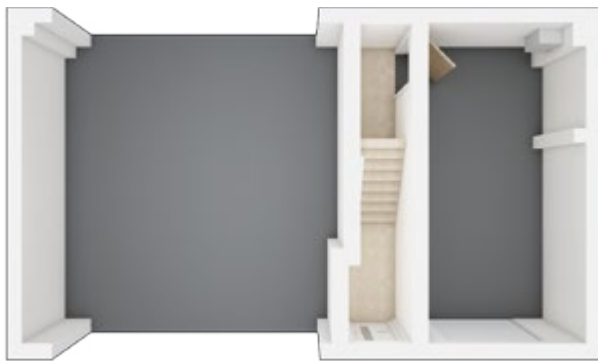
[View our current availability](#)

The floor plans depict a typical layout of this house type. For exact plot specification, details of external and internal finishes, dimensions and floor plan differences consult your Sales Executive. All dimensions are + or - 50mm and floor plans are not shown to scale. The kitchen layout and furniture positions are for indicative purposes only. The computer generated image is for illustrative purposes only and it is from an imaginary viewpoint within an open space area. Its purpose is to give a feel for the development, not an accurate description of each property. The illustration shows a typical Taylor Wimpey home of this type, but there are, however, variances from site to site. External materials, finishes, landscaping and the position of garages (where provided) may vary throughout the development. Properties may also be built handed (mirror image). Images may include optional upgrades at an additional cost. Please ask for further details. Please speak to our Sales Executives regarding the tenure of our new homes. 58103 / June 2025.



The Gildale

2 BEDROOM COACH HOUSE, TOTAL 781 sq. ft. / 72.57 sq. m.



GROUND FLOOR



FIRST FLOOR

Kitchen	3.86m × 2.80m	12'8" × 9'2"
Living/Dining	3.86m × 3.82m	12'8" × 10'9"
Bedroom 1	3.79m × 3.21m	12'5" × 10'7"
Bedroom 2	3.79m × 2.70m	12'5" × 8'11"

[→ Discover more about this home](#)

[→ View our current availability](#)

The floor plans depict a typical layout of this house type. For exact plot specification, details of external and internal finishes, dimensions and floor plan differences consult your Sales Executive. All dimensions are + or - 50mm and floor plans are not shown to scale. The kitchen layout and furniture positions are for indicative purposes only. The computer generated image is for illustrative purposes only and it is from an imaginary viewpoint within an open space area. Its purpose is to give a feel for the development, not an accurate description of each property. The illustration shows a typical Taylor Wimpey home of this type, but there are, however, variances from site to site. External materials, finishes, landscaping and the position of garages (where provided) may vary throughout the development. Properties may also be built handed (mirror image). Images may include optional upgrades at an additional cost. Please ask for further details. Please speak to our Sales Executives regarding the tenure of our new homes. 58103 / June 2025.



The Beaford

2 BEDROOM HOME, TOTAL 792 sq. ft. / 73.5 sq. m.



GROUND FLOOR

Living/Dining

4.06m × 3.80m 13'4" × 12'6"

Kitchen

2.92m × 2.20m 9'7" × 7'2"



FIRST FLOOR

Bedroom 1

4.06m × 3.83m 13'4" × 12'5"

Bedroom 2

4.06m × 2.70m 13'4" × 8'10"

[→ Discover more about this home](#)

[→ View our current availability](#)

The floor plans depict a typical layout of this house type. For exact plot specification, details of external and internal finishes, dimensions and floor plan differences consult your Sales Executive. All dimensions are + or - 50mm and floor plans are not shown to scale. The kitchen layout and furniture positions are for indicative purposes only. The computer generated image is for illustrative purposes only and it is from an imaginary viewpoint within an open space area. Its purpose is to give a feel for the development, not an accurate description of each property. The illustration shows a typical Taylor Wimpey home of this type, but there are, however, variances from site to site. External materials, finishes, landscaping and the position of garages (where provided) may vary throughout the development. Properties may also be built handed (mirror image). Images may include optional upgrades at an additional cost. Please ask for further details. Please speak to our Sales Executives regarding the tenure of our new homes. 58103 / June 2025.



The Owlton

3 BEDROOM HOME, TOTAL 1,238 sq. ft. / 115.0 sq. m.



GROUND FLOOR

Living/Dining

4.71m x 4.04m 15'6" x 13'3"

Kitchen

4.79m x 2.51m 15'9" x 8'3"



FIRST FLOOR

Bedroom 2

4.75m x 3.14m 15'7" x 10'4"

Bedroom 3

3.33m x 2.55m 10'11" x 8'4"



SECOND FLOOR

Bedroom 1

4.55m x 3.70m 14'9" x 12'2"

[→ Discover more about this home](#)

[→ View our current availability](#)

The floor plans depict a typical layout of this house type. For exact plot specification, details of external and internal finishes, dimensions and floor plan differences consult your Sales Executive. All dimensions are + or - 50mm and floor plans are not shown to scale. The kitchen layout and furniture positions are for indicative purposes only. The computer generated image is for illustrative purposes only and it is from an imaginary viewpoint within an open space area. Its purpose is to give a feel for the development, not an accurate description of each property. The illustration shows a typical Taylor Wimpey home of this type, but there are, however, variances from site to site. External materials, finishes, landscaping and the position of garages (where provided) may vary throughout the development. Properties may also be built handed (mirror image). Images may include optional upgrades at an additional cost. Please ask for further details. Please speak to our Sales Executives regarding the tenure of our new homes. 58103 / June 2025.



The Harrton

3 BEDROOM HOME, TOTAL 1,154 sq. ft. / 107.2 sq. m.*



GROUND FLOOR

Kitchen

3.37m × 3.18m 11'1" × 10'5"

Living/Dining Area

4.40m × 3.52m 14'5" × 11'7"

FIRST FLOOR

Bedroom 2

4.39m × 3.16m 14'5" × 10'5"

Bedroom 3

3.32m × 2.40m 10'11" × 7'10"

SECOND FLOOR

Bedroom 1

4.52m × 3.35m 14'8" × 11'0"

[→ Discover more about this home](#)

[→ View our current availability](#)

*CLIENT TO SUPPLY. The floor plans depict a typical layout of this house type. For exact plot specification, details of external and internal finishes, dimensions and floor plan differences consult your Sales Executive. All dimensions are + or - 50mm and floor plans are not shown to scale. The kitchen layout and furniture positions are for indicative purposes only. The computer generated image is for illustrative purposes only and it is from an imaginary viewpoint within an open space area. Its purpose is to give a feel for the development, not an accurate description of each property. The illustration shows a typical Taylor Wimpey home of this type, but there are, however, variances from site to site. External materials, finishes, landscaping and the position of garages (where provided) may vary throughout the development. Properties may also be built handed (mirror image). Images may include optional upgrades at an additional cost. Please ask for further details. Please speak to our Sales Executives regarding the tenure of our new homes. 58103 / June 2025.



The Henford

4 BEDROOM HOME, TOTAL 1,377 sq. ft. / 127.90 sq. m.



GROUND FLOOR

Kitchen/Dining Area

7.10m × 3.75m 23'3" × 12'4"

Living Room

5.00m × 3.34m 16'5" × 11'0"



FIRST FLOOR

Bedroom 1

3.96m × 2.74m 13'0" × 9'0"

Bedroom 2

3.88m × 2.96m 12'9" × 9'9"

Bedroom 3

3.77m × 3.05m 12'5" × 10'0"

Bedroom 4

3.13m × 2.13m 10'3" × 7'0"

[→ Discover more about this home](#)

[→ View our current availability](#)

*Plot specific windows. The floor plans depict a typical layout of this house type. For exact plot specification, details of external and internal finishes, dimensions and floor plan differences consult your Sales Executive. All dimensions are + or - 50mm and floor plans are not shown to scale. The kitchen layout and furniture positions are for indicative purposes only. The computer generated image is for illustrative purposes only and it is from an imaginary viewpoint within an open space area. Its purpose is to give a feel for the development, not an accurate description of each property. The illustration shows a typical Taylor Wimpey home of this type, but there are, however, variances from site to site. External materials, finishes, landscaping and the position of garages (where provided) may vary throughout the development. Properties may also be built handed (mirror image). Images may include optional upgrades at an additional cost. Please ask for further details. Please speak to our Sales Executives regarding the tenure of our new homes. 58103 / June 2025.



The Ayleford

4 BEDROOM HOME, TOTAL 1,114 sq. ft. / 103.54 sq. m.



GROUND FLOOR

Kitchen/Dining

5.75m x 3.78m 18'10" x 12'5"

Living Room

3.67m x 3.43m 12'0" x 11'3"



FIRST FLOOR

Bedroom 1

3.30m x 3.26m 10'10" x 10'9"

Bedroom 2

3.31m x 3.19m 10'10" x 10'5"

Bedroom 3

2.40m x 2.15m 7'11" x 7'1"



[Discover more about this home](#)



[View our current availability](#)

The floor plans depict a typical layout of this house type. For exact plot specification, details of external and internal finishes, dimensions and floor plan differences consult your Sales Executive. All dimensions are + or - 50mm and floor plans are not shown to scale. The kitchen layout and furniture positions are for indicative purposes only. The computer generated image is for illustrative purposes only and it is from an imaginary viewpoint within an open space area. Its purpose is to give a feel for the development, not an accurate description of each property. The illustration shows a typical Taylor Wimpey home of this type, but there are, however, variances from site to site. External materials, finishes, landscaping and the position of garages (where provided) may vary throughout the development. Properties may also be built handed (mirror image). Images may include optional upgrades at an additional cost. Please ask for further details. Please speak to our Sales Executives regarding the tenure of our new homes. 58103 / June 2025.



The Trelton

4 BEDROOM HOME, TOTAL 1,292 sq. ft. / 120.01 sq. m.



GROUND FLOOR

Living/Dining

4.96m x 3.38m 16'3" x 11'1"

Kitchen

3.21m x 2.85m 10'6" x 9'4"



FIRST FLOOR

Bedroom 1

4.70m x 3.42m 15'5" x 11'3"

Bedroom 2

3.06m x 2.81m 10'0" x 9'3"



SECOND FLOOR

Bedroom 3

3.87m x 2.77m 12'9" x 9'1"

Bedroom 4

3.09m x 2.54m 10'2" x 8'4"



[Discover more about this home](#)



[View our current availability](#)

The floor plans depict a typical layout of this house type. For exact plot specification, details of external and internal finishes, dimensions and floor plan differences consult your Sales Executive. All dimensions are + or - 50mm and floor plans are not shown to scale. The kitchen layout and furniture positions are for indicative purposes only. The computer generated image is for illustrative purposes only and it is from an imaginary viewpoint within an open space area. Its purpose is to give a feel for the development, not an accurate description of each property. The illustration shows a typical Taylor Wimpey home of this type, but there are, however, variances from site to site. External materials, finishes, landscaping and the position of garages (where provided) may vary throughout the development. Properties may also be built handed (mirror image). Images may include optional upgrades at an additional cost. Please ask for further details. Please speak to our Sales Executives regarding the tenure of our new homes. 58103 / June 2025.

Ways to buy

Everyone knows buying a new home is an exciting time. But it can be a stressful one too, which is why our Sales Executives and customer relations managers are there to help every step of the way, from your initial enquiry right through to opening the front door of your new home for the first time.



First-time buyer?

→ Here's how we can help

Existing home owner?

→ Here's how we can help



Please speak to your Sales Executive for further details.

Take your next step



Find your dream home on our website.



Book an appointment to view our show homes.



Take a virtual tour of our homes from the comfort of your sofa.



Have your questions answered by calling our Sales Executives on **01206 694 120**.



Find out how we can get you moving with our buying schemes.



Book an appointment



How to buy a home



WYVERN PLACE OFF RICHARD AVENUE, WIVENHOE, ESSEX, CO7 9HF

CONTACT US ON 01206 694 120

Taylor Wimpey