



Persimmon

Together, we make your home



Willow Grove

Blackburn • Lancashire



Persimmon

Together, we make your home

Together, we make your home

When it comes to designing a new development, we apply the same philosophy every time – make it unique, make it personal. That's because we understand your new home is more than simply bricks and mortar. It's a private place of sanctuary where we hope you'll laugh, entertain and escape for many years to come.

"With over 50 years of building excellence, find out more about us on page 4"

HBF Home Builders Federation



Customer Satisfaction 2025

5 stars!

We're proud of our 5 star builder status awarded by the national Home Builders Federation (HBF). It's a reflection of our commitment to delivering excellence always and putting our customers at the heart of all we do.



Willow Grove

Find out more

About Persimmon Homes	4
Your journey with us and schemes to help	6
Living at Willow Grove	8
Our homes	12
Specifications	26
Sustainability	28
Personalise with Finishing Touches	30
Proud to be building communities	32
Eco Range homes	34



Who we are

A little bit about us

You're about to make one of the most exciting investments of your life! A beautiful place to call home for years to come. Here are some reasons to invest in a Persimmon home...

Over 50 years of expertise

We've been building homes and communities since the early seventies, and just as fashions have moved on, so too has construction. Over half a century we've perfected processes, fine-tuned materials and honed skills to make us one of today's most modern and progressive home builders.

Sustainability mission

We're committed to reducing our impact on the planet and building for a better tomorrow, with a dedicated in-house team focused on this. [Read more on page 28](#)

Persimmon in numbers

It's not all about numbers we know, but to give you sense of scale here are a few:

10,664

homes
delivered in
2024

200+

locations
across
the UK

4,731

direct employees
make it all
happen

484

acres of
public space
created

£2.2bn

invested in
local communities
over the last
5 years



"Building sustainable homes and community hubs"

Save money on your energy bills

The increased thermal retention from our insulation and double glazing, along with reduced water use thanks to efficient appliances, mean you'll automatically save money on your energy and water bills – and with the rising cost of living, this can make a real difference.



Take a look at the recently published HBF Watt a Save report to find out how much you could save.

The Persimmon Pledge

The Persimmon Pledge is our commitment to making sure you receive exceptional customer service and relevant communications before, during and after you've moved in.

Find out more about the Persimmon Pledge.



Accessible homes

It's crucial that your new home works perfectly for you and your needs. We build in line with Approved Document M accessibility requirements.



Scan the QR code to find out what each rating means.



Happy hour

We run Customer Construction Clinics from our on-site sales offices each Monday from 5-6pm. Pop in to see the team both during and after you've moved in to your new home.



10-year warranty

When you buy a Persimmon home it comes complete with a 'peace of mind' 10-year insurance-backed warranty and our own two-year Persimmon warranty.



Help when you need it

You'll have a dedicated customer care helpline, plus cover for emergencies like complete loss of electricity, gas, water or drainage.

Finishing Touches

We know you'll want to make your home your own, so we created 'Finishing Touches', our home personalisation service. **Read more on page 30**





With you all the way

Your journey with us

From finding your perfect new home to moving in,
we're here to help every step of the way.

1.→ 2.→ 3.

Reservation

So you've seen a home you love? Speak to one of our friendly sales advisors who will help you secure your dream home.

Solicitor

You'll need to instruct a solicitor or conveyancer at the point of reservation. Your sales advisor can recommend a local independent company.

Mortgage application

Most people will need to apply for a mortgage. We can recommend independent financial advisors to give you the best impartial advice.

4.→ 5.→ 6.

Personalise!

The bit you've been waiting for! Making the final choices for your new home. Depending on build stage you can also choose from a range of Finishing Touches.

Exchange contracts

One step closer to moving in – this is where we exchange contracts and your solicitor will transfer your deposit.

Quality assurance

Your home will be thoroughly inspected by site teams and will also have an Independent Quality Inspection to make sure it's ready for you to move into.

7.→ 8.→ 9.

Home demo

Another exciting milestone! Here's where you get to see your new home before completion. You'll be shown how everything works and any questions can be answered.

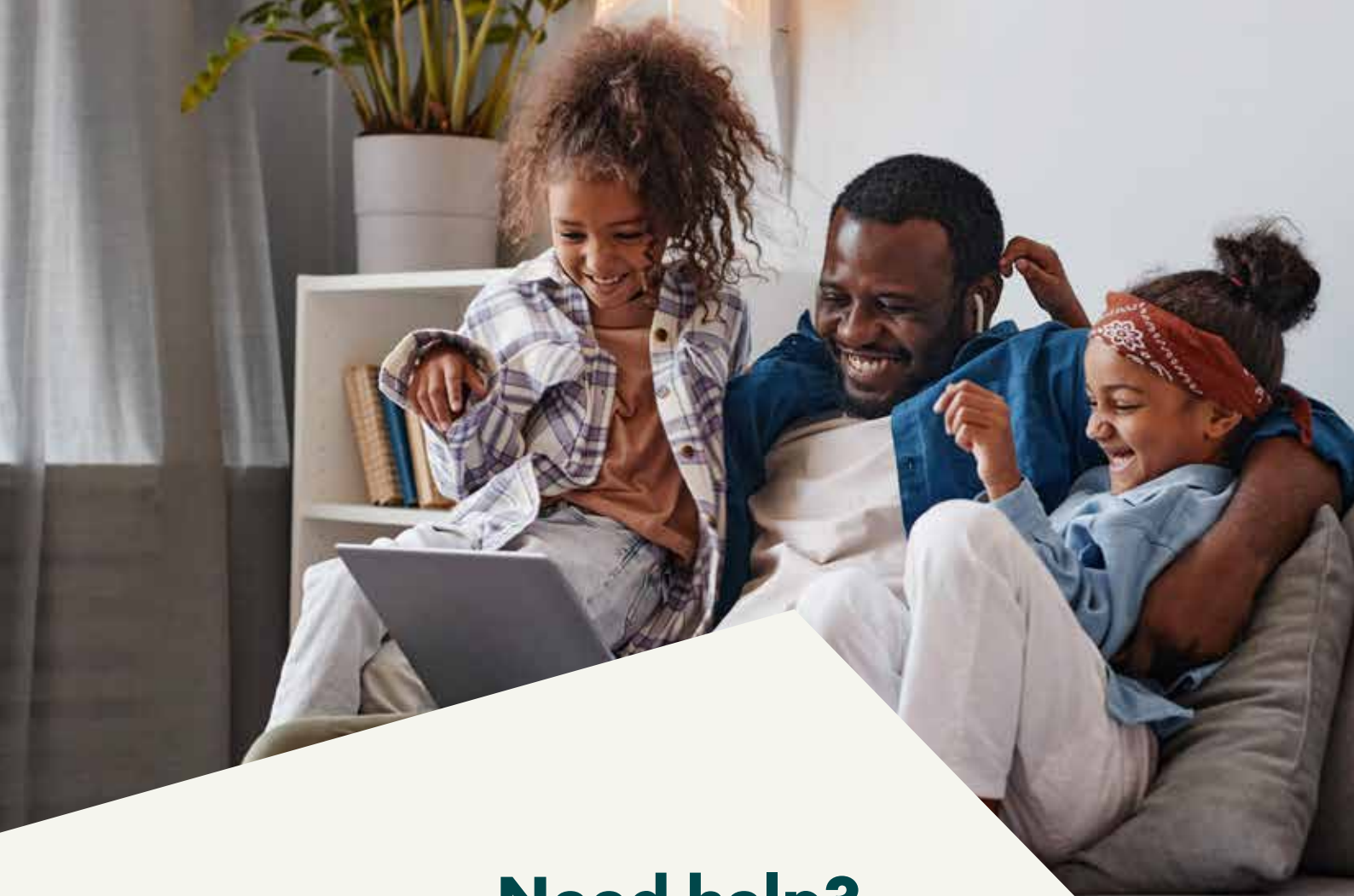
Handover

The moment you've been waiting for! The paperwork has been completed, the money transferred and now it's time to move in and start unpacking...

After-care

Our site and customer care teams will support you every step of the way. You'll receive a dedicated customer care line number to deal with any issues.

[persimmonhomes.com](https://www.persimmonhomes.com)



Need help?

One of the best things about buying a new-build home is the amazing offers and schemes you could benefit from. T&Cs apply.



PART
EXCHANGE

Part Exchange

Need to sell your home? We could be your buyer. Save money and time and stay in your home until your new one completes.



HOME
CHANGE

Home Change

Sell your current home with our support. We'll take care of estate agent fees and offer expert advice to help get you moving.



Deposit Boost

With Deposit Boost, if you've saved a 10% deposit for a Persimmon home, we could boost it by providing an additional 5%.



Own New Rate Reducer

An easier way to get an affordable mortgage on a new build home, our Own New Rate Reducer is a scheme that could help lower your monthly payments



- ④ Range of 2, 3, 4 and 5-bedroom homes
- ④ Sustainable, energy-efficient houses
- ④ A family-friendly location
- ④ Good links to Manchester, Liverpool and Leeds



Scan me!

For availability and pricing on our beautiful new homes at Willow Grove.



Blackburn • Lancashire

Willow Grove

Discover our new sustainable homes set on the southern edge of the Ribble Valley in Blackburn, Lancashire's second largest town. Ideal for growing families, first-time buyers and downsizers – our exciting Willow Grove development offers energy-efficient two, three, four and five-bedroom homes.

A new Lancashire base in our exciting development makes your weekly shop easy, providing you with all your everyday necessities and more. As a large town, Blackburn has a wide range of well-known, and local, amenities and facilities. Less than 15 minutes away, you can also enjoy the weekly markets of Lancashire's hidden gem, the neighbouring town of Darwen.

Perfect for nature lovers, you're situated in between some of the UK's most stunning landscapes, such as the West Pennines. Made famous by treasured British poet, William Wordsworth, the Lake District is also about an hour's drive away.

Well connected

With good rail and road networks, you can easily access the best of the North's countryside and city life. The town has two train stations to choose from, and the M65 motorway connects you to the main motorway networks quickly.

And for international flights, Manchester Airport is just over an hour by car. And if you need to commute to any of the major northern cities – Manchester or Liverpool – the motorway networks give you quick and easy connections.

Culture and cathedrals

The town has a thriving cultural scene, and is home to a number of theatres, plus its own museum and art gallery – and of course its local professional football club, Blackburn Rovers. An undiscovered treasure, Blackburn Cathedral is also well worth a visit, with its display of modern art and history.

School days

The town has a truly excellent range of primary and secondary schools, including the 'Outstanding' (rated by Ofsted) Pleckgate High School and The Redeemer C of E Primary School. For higher education opportunities, the University of Central Lancashire is based in Preston, and you have the university cities of Liverpool, Manchester and Leeds nearby too.

EXPLORE

Start exploring...

The Fernhurst Pub
0.1 miles

Ewood Park
0.3 miles

The Redeemer C of E
primary school
0.4 miles

Supermarket
0.6 miles

Our homes

2 bedroom

 The Alnmouth

3 bedroom

 The Kingley

 The Sherwood

 The Saunton

 The Barndale

 The Galloway

4 bedroom

 The Knebworth

 The Kennet

 The Brampton

 The Greenwood

 The Lambridge

 The Kielder

5 bedroom

 The Wychwood

 The Brightstone



Existing Housing



This site layout is intended for illustrative purposes only, and may be subject to change, for example, in response to market demand, ground conditions or technical and planning reasons. Trees, planting and public open space shown are indicative, actual numbers and positions may vary. This site plan does not form any part of a warranty or contract. Further information is available from a site sales advisor. The location of the affordable housing on this plan is indicative only and both the location and number of affordable housing plots may be subject to change.

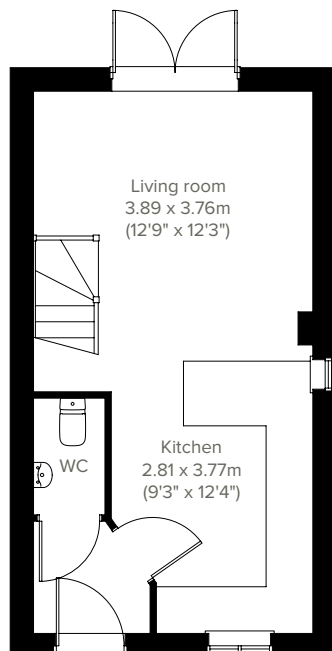


2 bedroom home

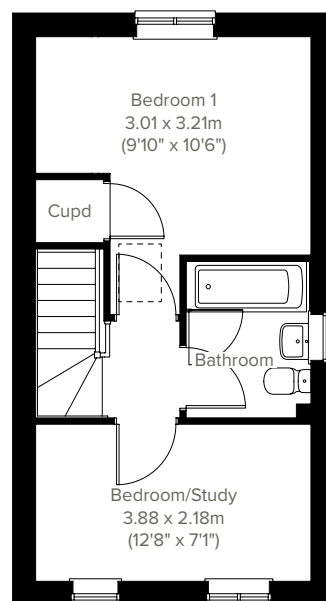
The Alnmouth



Perfectly-proportioned, the Alnmouth has a stylish open plan kitchen/dining/living room with French doors leading into the garden. It also features flexible first floor rooms, a good-sized family bathroom and off-road parking. Ideal if you're a first-time buyer looking for a fresh modern home you can make your own.



GROUND FLOOR



1ST FLOOR

Please note that elevation treatments and window/door positions may vary from plot to plot. Plot specific information will be confirmed on your reservation check list.

This information is for guidance only and does not form any part of any contract or constitute a warranty. Illustrations are of typical elevations and may vary. Floor plans are not drawn to scale and window positions may vary. Room dimensions are subject to a +/- 50mm (2") tolerance and are based on the maximum dimensions in each room. Please consult your sales advisor on site for specific elevations, room dimensions and external finishes. The PEA ratings are estimated and vary between home types, orientation and developments. Accessible and adaptable dwelling requirements are based upon the internal arrangements only. External requirements may vary between local authority and developments.

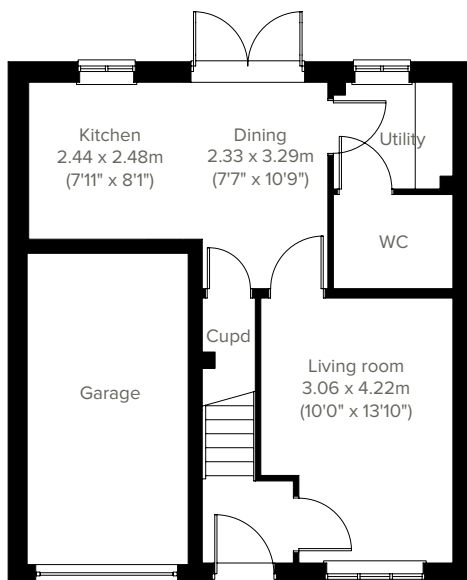


The Kingley

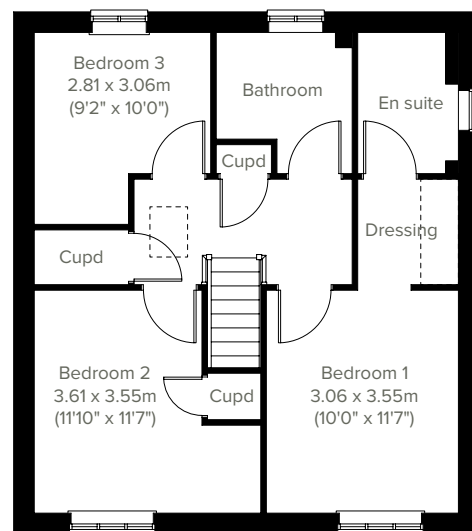
3 bedroom home



An attractive three-bedroom family home, the Kingley is ideal for modern living. The bright open plan kitchen/dining room has French doors leading into the garden - perfect for entertaining and family meals. The downstairs WC and four storage cupboards take care of everyday storage. Plus there's an en suite and dressing room to bedroom one, modern family bathroom and integral garage.



GROUND FLOOR



1ST FLOOR

Please note that elevation treatments and window/door positions may vary from plot to plot. Plot specific information will be confirmed on your reservation check list.

This information is for guidance only and does not form any part of any contract or constitute a warranty. Illustrations are of typical elevations and may vary. Floor plans are not drawn to scale and window positions may vary. Room dimensions are subject to a +/- 50mm (2") tolerance and are based on the maximum dimensions in each room. Please consult your sales advisor on site for specific elevations, room dimensions and external finishes. The PEA ratings are estimated and vary between home types, orientation and developments. Accessible and adaptable dwelling requirements are based upon the internal arrangements only. External requirements may vary between local authority and developments.

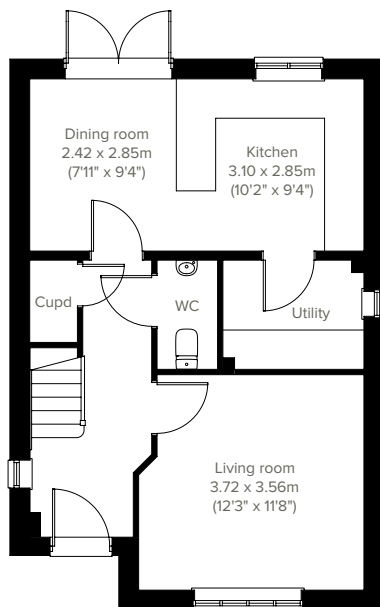


3 bedroom home

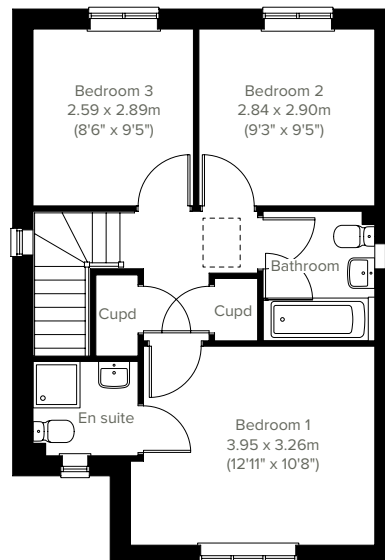
The Sherwood



The Sherwood is a modern home ideal for family life. This three-bedroom home features an open plan kitchen/ dining room with French doors leading into the garden, a handy utility room, a front-aspect living room, plus under-stairs storage and a WC. The first floor has three good-sized bedrooms, one with an en suite, and the main family bathroom.



GROUND FLOOR



1ST FLOOR

Please note that elevation treatments and window/door positions may vary from plot to plot. Plot specific information will be confirmed on your reservation check list.

This information is for guidance only and does not form any part of any contract or constitute a warranty. Illustrations are of typical elevations and may vary. Floor plans are not drawn to scale and window positions may vary. Room dimensions are subject to a +/- 50mm (2") tolerance and are based on the maximum dimensions in each room. Please consult your sales advisor on site for specific elevations, room dimensions and external finishes. The PEA ratings are estimated and vary between home types, orientation and developments. Accessible and adaptable dwelling requirements are based upon the internal arrangements only. External requirements may vary between local authority and developments.

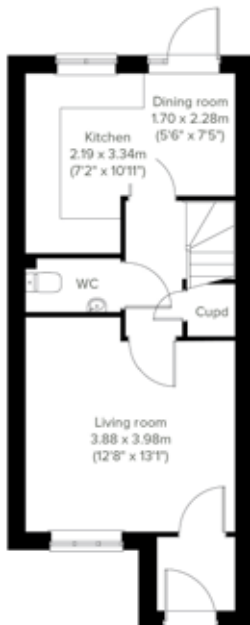


The Saunton

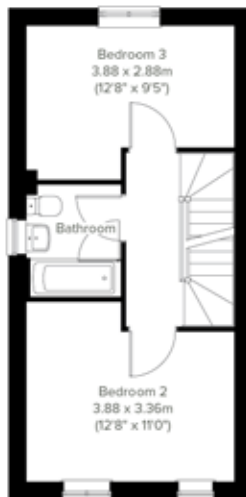
3 bedroom home



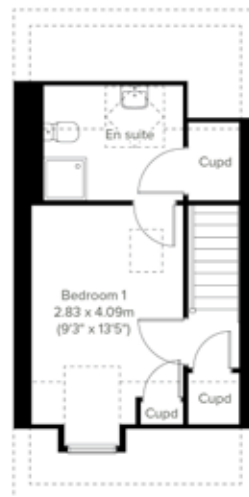
An attractive three-storey, three-bedroom home, the Saunton has a modern open plan kitchen/dining room with garden access, a well-proportioned living room and three good-sized bedrooms. The top floor bedroom one also has a spacious en suite. The enclosed porch, downstairs WC, three storage cupboards and off-road parking means it's practical as well as stylish.



GROUND FLOOR



1ST FLOOR



2ND FLOOR

Please note that elevation treatments and window/door positions may vary from plot to plot. Plot specific information will be confirmed on your reservation check list.

This information is for guidance only and does not form any part of any contract or constitute a warranty. Illustrations are of typical elevations and may vary. Floor plans are not drawn to scale and window positions may vary. Room dimensions are subject to a +/- 50mm (2") tolerance and are based on the maximum dimensions in each room. Please consult your sales advisor on site for specific elevations, room dimensions and external finishes. The PEA ratings are estimated and vary between home types, orientation and developments. Accessible and adaptable dwelling requirements are based upon the internal arrangements only. External requirements may vary between local authority and developments.

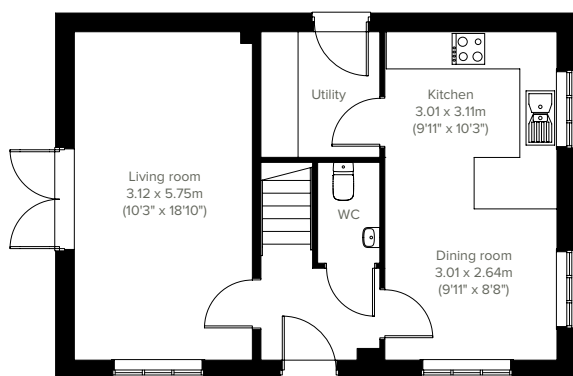


3 bedroom home

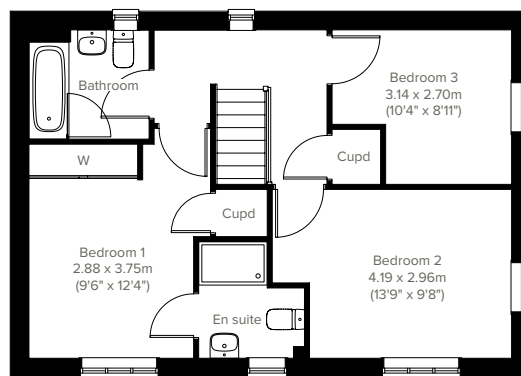
The Barndale



A thoughtfully-designed three-bedroom family home with much to offer, the Barndale has a bright and modern open plan kitchen/dining room leading to a handy utility room. The spacious living room has French doors leading into the garden. The inner hallway, downstairs WC and cupboards take care of everyday storage. Plus there's an en suite to bedroom one and a family bathroom.



GROUND FLOOR



1ST FLOOR

Please note that elevation treatments and window/door positions may vary from plot to plot. Plot specific information will be confirmed on your reservation check list.

This information is for guidance only and does not form any part of any contract or constitute a warranty. Illustrations are of typical elevations and may vary. Floor plans are not drawn to scale and window positions may vary. Room dimensions are subject to a +/- 50mm (2") tolerance and are based on the maximum dimensions in each room. Please consult your sales advisor on site for specific elevations, room dimensions and external finishes. The PEA ratings are estimated and vary between home types, orientation and developments. Accessible and adaptable dwelling requirements are based upon the internal arrangements only. External requirements may vary between local authority and developments.

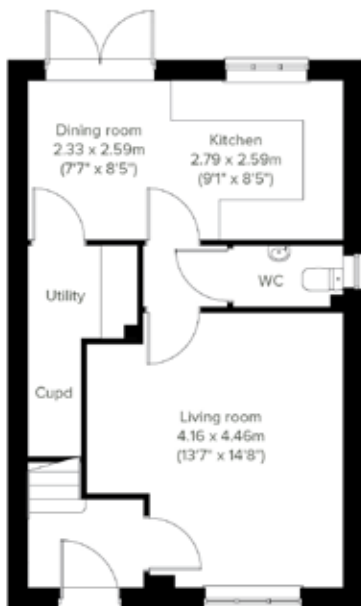


The Galloway

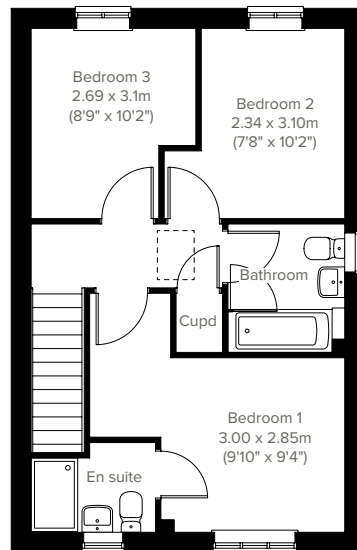
3 bedroom home



The popular Galloway is a three-bedroom family home with bright and modern open plan kitchen/dining room with French doors leading into the garden. The downstairs WC, two handy storage cupboards and en suite to bedroom one mean it ticks all the boxes for practical family living.



GROUND FLOOR



1ST FLOOR

Please note that elevation treatments and window/door positions may vary from plot to plot. Plot specific information will be confirmed on your reservation check list.

This information is for guidance only and does not form any part of any contract or constitute a warranty. Illustrations are of typical elevations and may vary. Floor plans are not drawn to scale and window positions may vary. Room dimensions are subject to a +/- 50mm (2") tolerance and are based on the maximum dimensions in each room. Please consult your sales advisor on site for specific elevations, room dimensions and external finishes. The PEA ratings are estimated and vary between home types, orientation and developments. Accessible and adaptable dwelling requirements are based upon the internal arrangements only. External requirements may vary between local authority and developments.

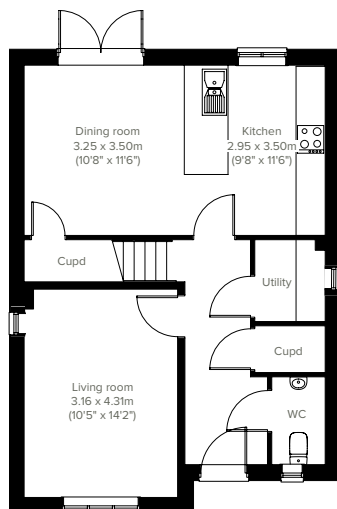


4 bedroom home

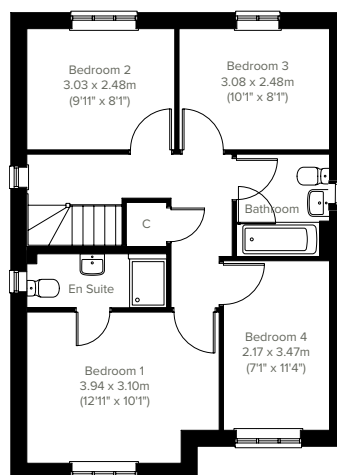
The Knebworth



Designed with modern family life in mind, the Knebworth is a four-bedroom home featuring an open plan kitchen/dining/family room with French doors leading into the garden, a handy utility room and a front-aspect living room, plus under-stairs storage and a WC. The first floor has four good-sized bedrooms - bedroom one with an en suite - and the main family bathroom.



GROUND FLOOR



1ST FLOOR

Please note that elevation treatments and window/door positions may vary from plot to plot. Plot specific information will be confirmed on your reservation check list.

This information is for guidance only and does not form any part of any contract or constitute a warranty. Illustrations are of typical elevations and may vary. Floor plans are not drawn to scale and window positions may vary. Room dimensions are subject to a +/- 50mm (2") tolerance and are based on the maximum dimensions in each room. Please consult your sales advisor on site for specific elevations, room dimensions and external finishes. The PEA ratings are estimated and vary between home types, orientation and developments. Accessible and adaptable dwelling requirements are based upon the internal arrangements only. External requirements may vary between local authority and developments.

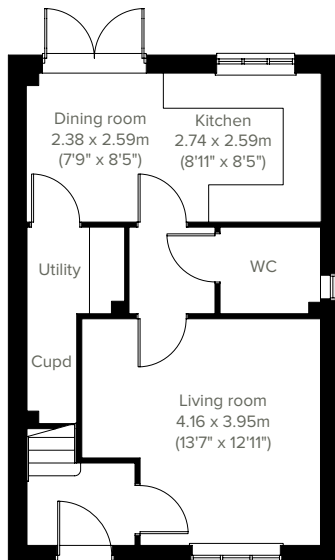


The Kennet

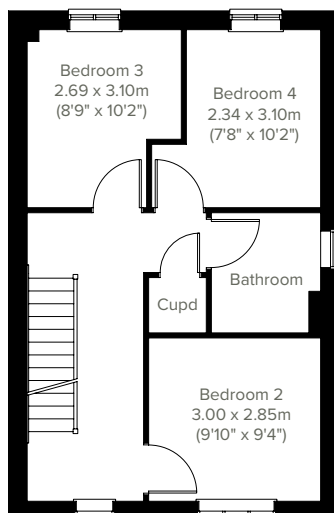
4 bedroom home



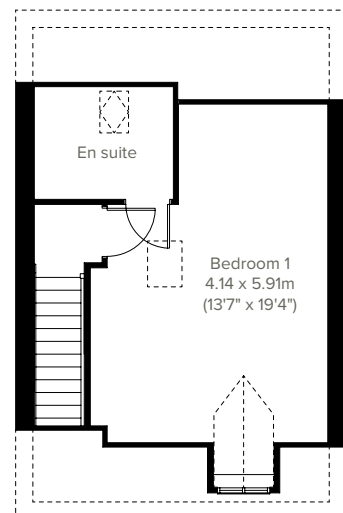
The Kennet is a modern three-storey home ideal for family life. This four-bedroom home features an open plan kitchen/dining room with French doors leading into the garden, a handy utility room and front-aspect living room, plus under-stairs storage and a WC. The first floor has three good-sized bedrooms and the main family bathroom, and on the top floor there's an impressive bedroom one with an en suite.



GROUND FLOOR



1ST FLOOR



2ND FLOOR

Please note that elevation treatments and window/door positions may vary from plot to plot. Plot specific information will be confirmed on your reservation check list.

This information is for guidance only and does not form any part of any contract or constitute a warranty. Illustrations are of typical elevations and may vary. Floor plans are not drawn to scale and window positions may vary. Room dimensions are subject to a +/- 50mm (2") tolerance and are based on the maximum dimensions in each room. Please consult your sales advisor on site for specific elevations, room dimensions and external finishes. The PEA ratings are estimated and vary between home types, orientation and developments. Accessible and adaptable dwelling requirements are based upon the internal arrangements only. External requirements may vary between local authority and developments.

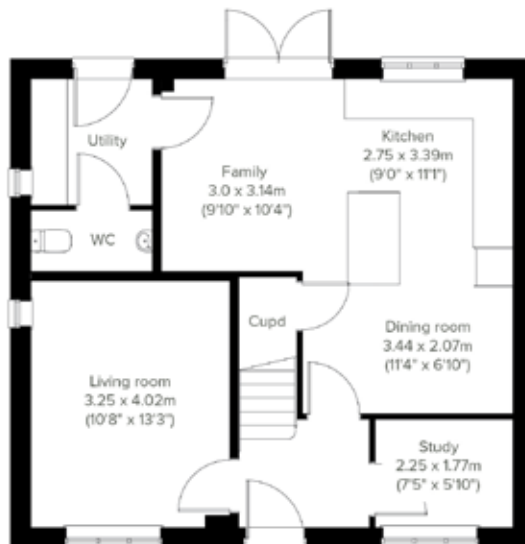


4 bedroom home

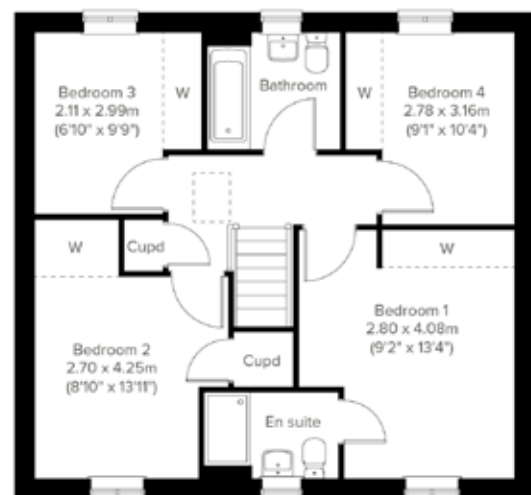
The Brampton



A beautifully-designed four-bedroom detached home, the Brampton has everything you need for modern living. Downstairs there's a front-aspect living room, a spacious kitchen/dining/family room with French doors leading into the rear garden, and a separate study. The first floor is home to a generous bedroom one with en suite, plus plenty of storage cupboards and the family bathroom.



GROUND FLOOR



1ST FLOOR

Please note that elevation treatments and window/door positions may vary from plot to plot. Plot specific information will be confirmed on your reservation check list.

This information is for guidance only and does not form any part of any contract or constitute a warranty. Illustrations are of typical elevations and may vary. Floor plans are not drawn to scale and window positions may vary. Room dimensions are subject to a +/- 50mm (2") tolerance and are based on the maximum dimensions in each room. Please consult your sales advisor on site for specific elevations, room dimensions and external finishes. The PEA ratings are estimated and vary between home types, orientation and developments. Accessible and adaptable dwelling requirements are based upon the internal arrangements only. External requirements may vary between local authority and developments.

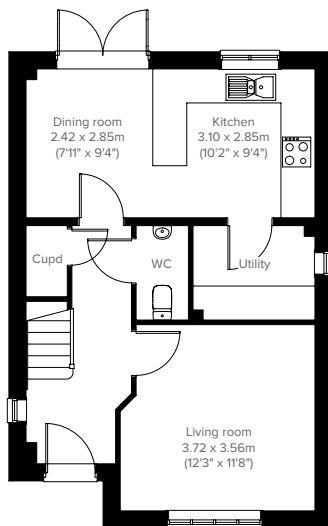


The Greenwood

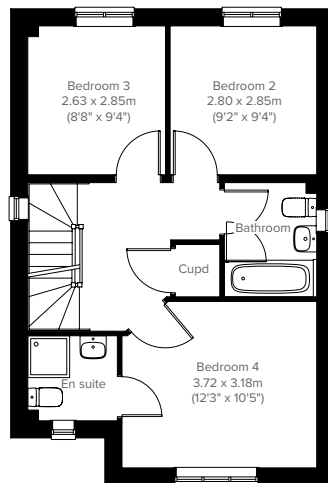
4 bedroom home



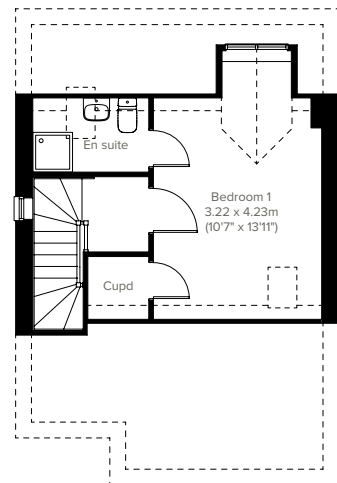
Enjoy the best of modern living in this popular four-bedroom home. The Greenwood's bright front-aspect living room, spacious kitchen/dining room, separate utility room, handy storage cupboard and WC complete the ground floor. The first floor consists of three bedrooms - bedroom four with an en suite and a family bathroom. On the second floor, bedroom one has an en suite and further storage.



GROUND FLOOR



1ST FLOOR



2ND FLOOR

Please note that elevation treatments and window/door positions may vary from plot to plot. Plot specific information will be confirmed on your reservation check list.

This information is for guidance only and does not form any part of any contract or constitute a warranty. Illustrations are of typical elevations and may vary. Floor plans are not drawn to scale and window positions may vary. Room dimensions are subject to a +/- 50mm (2") tolerance and are based on the maximum dimensions in each room. Please consult your sales advisor on site for specific elevations, room dimensions and external finishes. The PEA ratings are estimated and vary between home types, orientation and developments. Accessible and adaptable dwelling requirements are based upon the internal arrangements only. External requirements may vary between local authority and developments.

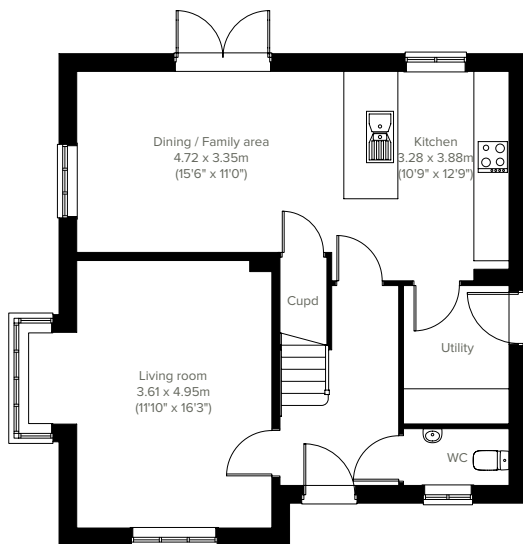


4 bedroom home

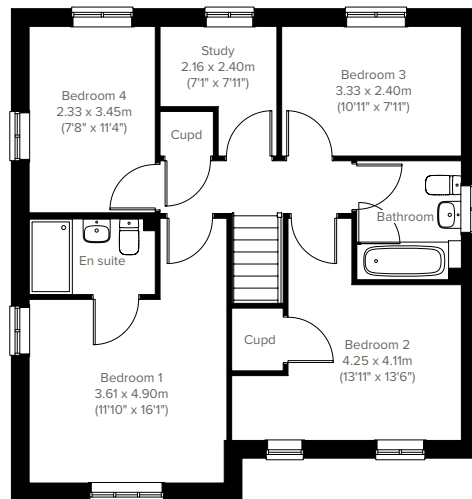
The Lambridge



An impressive detached home with a spacious open plan kitchen/dining/family room, the Lambridge has four bedrooms and is perfectly designed for modern family living. Its other features include a bright living room with a bay window and separate study. The first floor bedroom one is spacious and has an en suite. There are a further three bedrooms and a family bathroom.



GROUND FLOOR



1ST FLOOR

Please note that elevation treatments and window/door positions may vary from plot to plot. Plot specific information will be confirmed on your reservation check list.

This information is for guidance only and does not form any part of any contract or constitute a warranty. Illustrations are of typical elevations and may vary. Floor plans are not drawn to scale and window positions may vary. Room dimensions are subject to a +/- 50mm (2") tolerance and are based on the maximum dimensions in each room. Please consult your sales advisor on site for specific elevations, room dimensions and external finishes. The PEA ratings are estimated and vary between home types, orientation and developments. Accessible and adaptable dwelling requirements are based upon the internal arrangements only. External requirements may vary between local authority and developments.

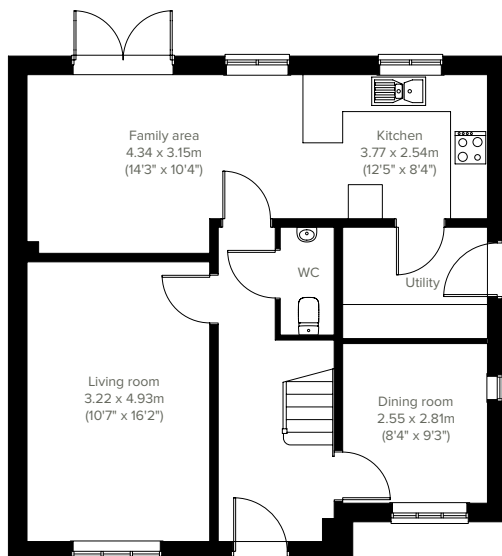


The Kielder

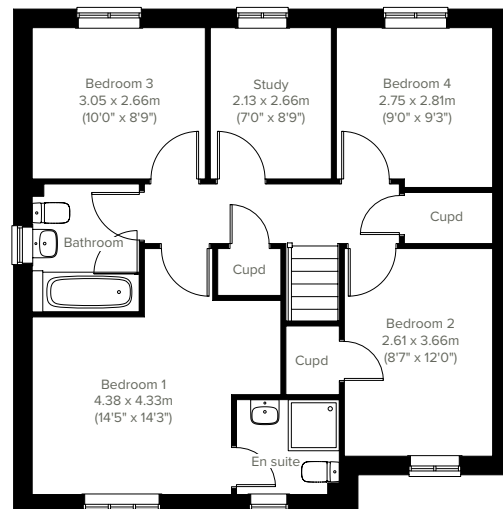
4 bedroom home



The Kielder is a superb detached home with a good-sized living room, and a bright open plan kitchen/family room with double doors leading onto the garden - perfect for family life and entertaining. It's practical too, with a utility, downstairs WC and two storage cupboards. The large bedroom one has an en suite with the spacious landing leading on to three further bedrooms, a study and the main family bathroom.



GROUND FLOOR



1ST FLOOR

Please note that elevation treatments and window/door positions may vary from plot to plot. Plot specific information will be confirmed on your reservation check list.

This information is for guidance only and does not form any part of any contract or constitute a warranty. Illustrations are of typical elevations and may vary. Floor plans are not drawn to scale and window positions may vary. Room dimensions are subject to a +/- 50mm (2") tolerance and are based on the maximum dimensions in each room. Please consult your sales advisor on site for specific elevations, room dimensions and external finishes. The PEA ratings are estimated and vary between home types, orientation and developments. Accessible and adaptable dwelling requirements are based upon the internal arrangements only. External requirements may vary between local authority and developments.

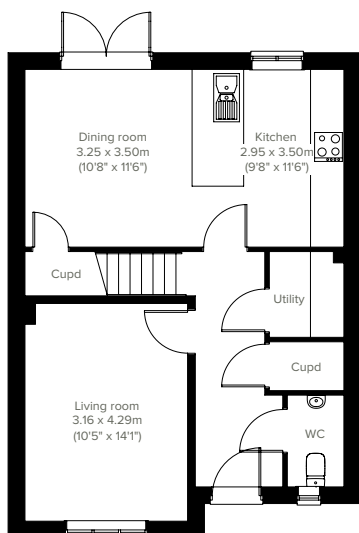


5 bedroom home

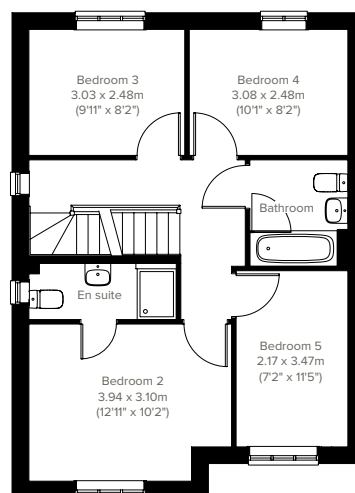
The Wychwood



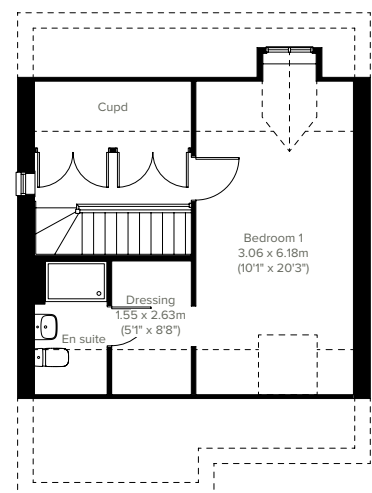
The Wychwood is a modern three-storey home ideal for family life. This five-bedroom home features an open plan kitchen/dining room with French doors leading into the garden, a handy utility room, a front-aspect living room, plus under-stairs storage and a WC. The first floor has four good-sized bedrooms, one with an en suite, and the main family bathroom, while on the top floor there's an impressive bedroom one with an en suite, walk in wardrobe and further storage cupboard.



GROUND FLOOR



1ST FLOOR



2ND FLOOR

Please note that elevation treatments and window/door positions may vary from plot to plot. Plot specific information will be confirmed on your reservation check list.

This information is for guidance only and does not form any part of any contract or constitute a warranty. Illustrations are of typical elevations and may vary. Floor plans are not drawn to scale and window positions may vary. Room dimensions are subject to a +/- 50mm (2") tolerance and are based on the maximum dimensions in each room. Please consult your sales advisor on site for specific elevations, room dimensions and external finishes. The PEA ratings are estimated and vary between home types, orientation and developments. Accessible and adaptable dwelling requirements are based upon the internal arrangements only. External requirements may vary between local authority and developments.

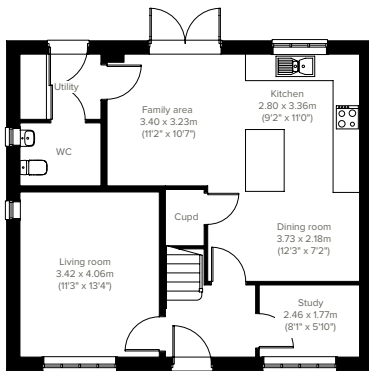


The Brightstone

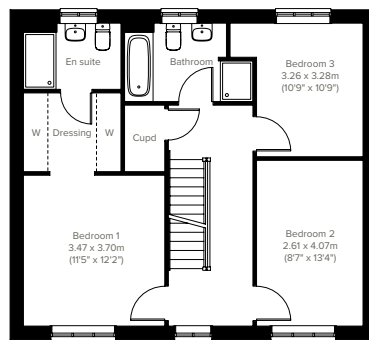
5 bedroom home



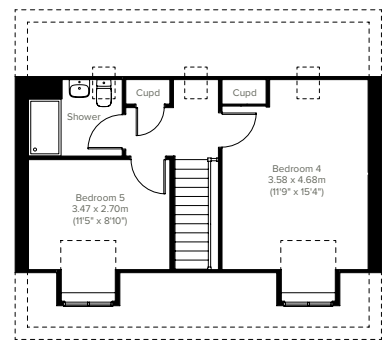
A stunning detached home with an impressive open plan kitchen/dining/family room, the Brightstone has five bedrooms and is perfectly designed for modern family living. Its other features include a bright family living room and separate study. The first floor bedroom one is spacious with a large en suite and dressing area. This floor is home to a further two bedrooms and a family bathroom. The second floor is home to two more bedrooms, both with their own en suites and handy storage cupboard.



GROUND FLOOR



1ST FLOOR



2ND FLOOR

Please note that elevation treatments and window/door positions may vary from plot to plot. Plot specific information will be confirmed on your reservation check list.

This information is for guidance only and does not form any part of any contract or constitute a warranty. Illustrations are of typical elevations and may vary. Floor plans are not drawn to scale and window positions may vary. Room dimensions are subject to a +/- 50mm (2") tolerance and are based on the maximum dimensions in each room. Please consult your sales advisor on site for specific elevations, room dimensions and external finishes. The PEA ratings are estimated and vary between home types, orientation and developments. Accessible and adaptable dwelling requirements are based upon the internal arrangements only. External requirements may vary between local authority and developments.



Willow Grove

Specifications

Our homes include these items as standard to ensure you have everything you need to be comfortable from the day you move in. Built for today's modern lifestyles with sustainability in mind.



Add some finishing touches

Depending on the build stage of your new home, you can upgrade things like kitchens, appliances, taps and showers via our bespoke 'Finishing Touches' range.



External

Walls

Traditional cavity walls.
Inner: timber frame or block.
Outer: Style suited to planned architecture.

Roof

Tile or slate-effect with PVCu rainwater goods.

Windows

Double glazed E-glass windows in PVCu frames.

Doors

GRP-skinned external doors with PVCu frames.
French doors to garden or balcony
(where applicable).



Internal

Ceilings

Painted white.

Lighting

Pendant or batten fittings with low-energy bulbs.

Stairs

Staircase painted white.

Walls

Painted in white emulsion.

Doors

White pre-finished doors with white hinges.

Heating

Gas fired combi boiler with radiators in all main rooms, with thermostatically-controlled valves to bedrooms.

Insulation

Insulated loft and hatch to meet current building regulations.

Electrics

Individual circuit breakers to consumer unit and double electric sockets to all main rooms.

General

Media plate incorporating TV and telecommunication outlets to living room.



Kitchen

General

Fully-fitted kitchen with a choice of doors and laminate worktop with upstands to match (depending on build stage).

Plumbing

Plumbing for washing machine.

Appliances

Single electric stainless steel oven and gas hob in stainless steel with integrated stainless steel cooker hood.



Bathroom

Suites

White bathroom suites with chrome-finished fittings.

Extractor fan

Extractor fan to bathroom and en suite (where applicable).

Shower

Mira showers with chrome fittings to en suite. Where there is no en suite, Mira thermostatic shower with wall mounted shower head.

Splashbacks

Splashback to sanitaryware walls in bathroom and en suite. Splashback to bath and full height tiled shower where separate enclosure only.

General

En suite to bedroom(s) where applicable.



Security

Locks

Three-point locking to front and rear doors, locks to all windows (except escape windows).

Fire

Smoke detectors wired to the mains with battery back-up.



Garage & Gardens

Garage

Garage, car ports or parking space.

Garden

Front lawn turfed or landscaped (where applicable).

Fencing

1.8 metre fence to rear garden, plus gate.





Energy efficiency built in

Sustainability

Our homes are typically 30% more efficient than traditional UK housing, helping you to save money and reduce your impact on the environment.

We're proud that we already build our homes to high levels of energy efficiency, but there's still a way to go. Our in-house sustainability team is dedicated to our mission to have net zero carbon homes in use by 2030, and for our own operations to be net zero carbon by 2040.

To achieve this, we're working to science-based carbon reduction targets in line with the Paris Agreement's 1.5°C warming pledge, investing in low-carbon solutions and technology that will further reduce the carbon footprints of our homes and our impact on the planet.

Energy efficiency built in:

- ✓ **PEA rating – B**
Our typical B rating makes our homes much more efficient than traditional D-rated homes.
- ✓ **Up to 400mm roof space insulation**
Warmer in winter, cooler in summer, reducing energy bills.
- ✓ **Argon gas filled double glazing**
Greater insulation and reduced heat loss.
- ✓ **Energy efficient lighting**
We use energy-saving LED lightbulbs in all our homes.
- ✓ **A-rated appliances**
Many of our kitchen appliances have a highly efficient A rating.
- ✓ **A-rated boilers**
Our condenser boilers far outperform non-condensing ones.
- ✓ **Local links**
We're located close to amenities and public transport to help reduce your travel footprint.
- ✓ **Ultra-fast broadband**
FibreNest fibre-to-the-home connectivity helps you live and work at home more flexibly.
- ✓ **Lower-carbon bricks**
Our concrete bricks typically use 28% less carbon in manufacture than clay, giving total lifetime carbon savings of 2.4 tonnes of CO₂ per house built.

Eco goodies

When you move in to your new Persimmon home you'll find some of our favourite eco brands in your Homemove box. These products are plastic free, refillable and ethically sourced.





Your home, your way

Finishing Touches to make it yours

Our goal is to make your house feel like your home before
you've even collected the keys.

Key to achieving this is giving you the creative freedom to add your own style and personality to every room through our fabulous Finishing Touches collection.

Featuring the very latest designs from a host of leading brands, Finishing Touches lets you personalise your home inside and out. And rest assured, every upgrade and item available has been carefully chosen to complement the style

and finish of your new home. Of course, the real beauty is that all these extras will be ready for the day you move in.

Thanks to our impressive buying power we can offer almost any upgrade you can imagine at a highly competitive price. It can all be arranged from the comfort and convenience of one of our marketing suites, in a personal design appointment.

You can choose:



Kitchens



Appliances



Bathrooms



Flooring



Wardrobes



Fixtures & fittings

"One of the most exciting things about buying a brand new home is putting your own stamp on a blank canvas."



Share & win!

Share your love for your new Persimmon home and you could win a £100 IKEA voucher. There is one up for grabs every month. For inspiration, check out past winners' homes on our Instagram page @persimmon_homes

#lovemypersimmonhome

The earlier you reserve, the greater the choice

We'll always try and accommodate the Finishing Touches you want, but they are build-stage dependent, so the earlier you reserve the better.

persimmonhomes.com/finishingtouches

Finishing Touches are subject to availability and stage of construction. Prices for your specific home type will be in our price list. For a full list of Finishing Touches available for your home, please contact the sales advisor on site.

Eco Range homes

New build homes are changing, and together, we're embracing the future. Recent updates to the Government's Part L building regulations mean from June 2023 our new Persimmon Eco Range homes will have a reduction of 31% in carbon emissions. This means a warmer, more energy-efficient home for you and the really cosy feeling of knowing it's better for the environment.

This means... **a saving of up to £6,730*** over the lifetime of a 25 year mortgage.



31 % reduction in carbon emissions

Solar panels help boost your existing energy-efficient boiler using sustainable green energy. For full details of the number of solar panels (where applicable) and the location; please refer your sales advisor for details.

EV charging is a handy addition if you have an electric car, as you can charge it from the comfort of your own home. NB: Not all homes will have EV chargers as they're site and plot dependent. They can be added from our Finishing Touches range.

Enhanced loft insulation is a huge cosy blanket that slows down the transfer of heat between your home and the outside world. It not only warms your home in the winter but keeps it cooler in the summer.

Waste water heat recovery ensures the waste water from the shower heats the incoming cold water as it goes up the pipe so that the boiler doesn't have to work as hard to heat it.

More thermally-efficient walls mean less heat escaping, so you aren't as dependent on central heating, and whatever heat is generated is kept in your home.

Our panelised offsite-manufactured timber frame technology uses a unique, sustainable panel system which adds to the thermal efficiency of your home. *NB: not all homes will be built using timber frame technology.

Energy-efficient boilers use the latest technology to warm your already well-insulated home. The controls allow you to optimise your energy saving whilst keeping you comfortable.

A more thermally-efficient ground floor will mean you'll benefit from the additional insulation we're incorporating in the floor construction.

*When compared to a Victorian-built equivalent, savings could be up to £31,640. The £6,730 saving is in comparison to a Persimmon home built to current building regulations (2013).[†]NB: not all homes will be built using timber frame technology.

[†]NB: Not all homes will have EV Chargers, but they can be added from our Finishing Touches range.



6 reasons why it pays to buy new

Did you know?

Most of the benefits of buying new are obvious, but some are not. Here's a quick summary of the key reasons why it's such a smart move:

1.

No chain

Few things are more annoying in the home buying process than a time-consuming chain you can't control. Buying new limits the chance of getting involved in one.

2.

Energy efficient

Our homes include cost-effective combi boilers, first-rate loft insulation and draught-free double glazed windows to meet stringent energy-efficient standards, keeping your energy bills as low as possible.

3.

Brand new

Absolutely everything in your new home is brand new. You get all the latest designs and tech, complete with manufacturers' warranties. Win-win.

4.

More ways to buy

We offer a range of schemes to help get you on the property ladder, including Home Change and Part Exchange.

5.

10 year warranty

All our new homes come with a ten-year, insurance-backed warranty, as well as our own two-year Persimmon warranty. In the unlikely event you ever need to claim, our Customer Care Team are there to help you.

6.

Safe & secure

All our homes are built from fire-retardant materials and come with fitted smoke alarms and fire escape windows. They're also far more secure than older buildings thanks to the security locks and lighting we use.

[persimmonhomes.com](https://www.persimmonhomes.com)



**And did we mention you'll have
more time for dancing?**

Buying new means you'll spend far less time on repairs and maintenance, after all, life's too short to spend every weekend doing DIY.



Willow Grove

Jack Walker Way
Blackburn
BB2 4JJ

T: 01254 495 001

E: willowgrove.lanc@persimmonhomes.com
persimmonhomes.com/willow-grove

Head Office

Persimmon Homes Lancashire
Persimmon House
Lancaster Business Park
Caton Road
Lancaster
LA1 3RQ

T: 01524 542 000

E: lanc.sales@persimmonhomes.com
persimmonhomes.com



Issue: August 2025 Ref: 460-223

Persimmon plc, Registered office: Persimmon House, Fulford, York YO19 4FE Registered in England no: 1818486

Willow Grove is a marketing name only. The copyright in this document and design is confidential to and the property of Persimmon Homes Developments 2025. These details are intended to give a general idea of the type of home but they do not form part of any specification or contract. The dimensions are approximate and may vary depending on internal finish. By the time you read this some of the details may have changed because of the Persimmon Homes policy of continually updating and improving design features. Therefore, please be sure to check the plan and specification in the sales office to keep you up-to-date with the latest improvements. The vendors of this property give notice that: (i) the particulars are produced in good faith, are set out as a general guide only and do not constitute any part of a contract; (ii) no person in the employment of Persimmon Homes or their authorised agents has any authority to make or give any representation or warranty whatever in relation to this property. Persimmon Homes is compliant with the New Homes Quality Code. Please ask your sales advisor if you have any further questions.