


*Wain*  
HOMES

A man with a beard, wearing a pink long-sleeved shirt and a yellow and brown striped apron, is kneading dough on a floured surface. Flour is flying through the air, creating a dynamic and artistic effect. In the foreground, there is a wooden rolling pin, several red tomatoes, and some green herbs. The background shows a kitchen with white cabinets and a built-in oven.

A place that lets you be you.  
That says everything about you.  
That feels good, feels right.  
Where life can be beautifully imperfect.  
And you love every moment of it.

YOUR KIND OF *perfect*



# TREVOW WEST PHASE 1 DEVELOPMENT PLAN



## 2 Bedroom Homes

- The Candlewood (CAN)
- The Oysterwood (OYW)

## 3 Bedroom Homes

- The Alder (ALD)
- The Axelwood (AXE)
- The Coral (COR)
- The Laurel (LAU)
- The Whiteberry (WHI)

## 4 Bedroom Homes

- The Almond (ALM)
- The Bayberry (BAY)
- The Foxglove (FXG)
- The Willow (WIL)
- The Witchazel (WIT)

## Affordable Homes

- \* Shared Equity Homes
- Rented Homes
- Private Investor

(Location of affordable / rented homes is indicative)



**Wain Homes abides by the New Homes Quality Code, an independent industry code introduced to champion quality new homes and better consumer outcomes.** Dimensions shown are internal finished dimensions which may vary as each home is built individually and the precise internal finishes may not always be the same. Please be aware that window and door positions could vary due to plot orientation. It is essential to view the working drawings with our Sales Executive for plot specific detail. Enquire for further information. Wain Homes Policy is continuous product and specification development. Every effort has been made to ensure the accuracy of the information provided in this leaflet at the date of publication but it may be subject to change without notice. Please consult with our Sales Executive to obtain the current specification. You should take appropriate steps to verify any information upon which you wish to rely. The sizes indicated are not intended to be used for carpet sizes, appliance spaces or items of furniture. Elevational treatments may vary to those shown. These particulars are intended for guidance only and their accuracy is not guaranteed. They do not constitute a contract, part of a contract or warranty. (January 2026)



# TREVOW HEIGHTS SPECIFICATION

THE CANDLEWOOD | THE OYSTERWOOD | THE ALDER | THE AXELWOOD | THE CORAL  
THE LAUREL | THE WHITEBERRY | THE ALMOND | THE BAYBERRY | THE FOXGLOVE  
THE WILLOW | THE WITCHAZEL

## KITCHENS

- Luxury Fitted Kitchens from our Standard Range with Soft Close Mechanisms in a Choice of Finishes\*
- Laminated Worktops to Kitchen and Utility with Matching Upstands in a Choice of Finishes\*
- 1½ Bowl Inset Stainless Steel Sink and Tap to the Kitchen
- Single Bowl Stainless Steel Sink and Tap to Utility Rooms
- AEG Stainless Steel Double Oven (4 Bed Homes Only)
- AEG Stainless Steel Single Oven (2 and 3 Bed Homes Only)
- AEG 4-Ring Induction Hob with Silver Glass Splashback and Extractor Hood
- Electrolux Integrated Fridge Freezer
- Electrolux Integrated Dishwasher
- Electrolux Integrated Washing Machine
- White Downlights to Kitchen
- Pelmet Lighting to Kitchen

## BATHROOMS

- Roca Vanity Unit to Bathroom and En-Suite 1 in a Choice of Finishes\*
- Roca Gap Sanitaryware to Cloakroom and En-Suite 2 in White with Semi Pedestals and Soft Close Seats
- Roca Gap Bath
- Aqualisa Downtown Brassware
- Aqualisa Mian 2-Way Mixer Shower with Ceiling Drencher and Adjustable Hose to Shower Cubicles
- Aqualisa Mian 3-Way Mixer Shower with Wall Drencher and Adjustable Hose to Baths with no separate Shower Cubicle
- Chrome Shower Cubicles
- Bathrooms and En-Suites to be Half-Tiled throughout with a Choice from our Tileflair Standard Range\*
- Shower Cubicles to be Fully-Tiled with a Choice from our Tileflair Standard Range\*
- Half-Height Tiling to all Sanitaryware Walls in Cloakroom with a Choice from our Tileflair Standard Range\*
- White Heated Towel Rail to Bathroom and En-Suites
- White Downlights to Bathrooms and En-Suites
- White Shaver Socket to Bathrooms and En-suites

## HEATING SYSTEM

- Gas Central Heating with High Efficiency Boiler and Panel Radiators
- Honeywell T6 Thermostat

## OTHER INTERNAL FEATURES

- Amtico First LVT Flooring to Kitchen, Dining, Utility, Bathrooms, En-Suites and Cloakrooms in a Choice of Finishes\*
- Carpets from our Standard Range to all other areas in a Choice of Finishes\*
- All Ceilings to be Skim Finished and Painted White
- All Walls to be Skim Finished and Painted White
- All Woodwork to be Finished in White Satinwood
- Staircase, including Newel Posts and Spindles to be Finished in White Satinwood
- All Handrails and Newel Caps to be Finished in Oak
- Vertical 5-Panel Oak Veneer Doors with Chrome Effect Door Furniture
- Spacepro Fitted Wardrobes with Sliding Doors to Bedroom 1+
- Ultrafast Hard Wired Fibre Broadband\*\*
- White Sockets and Switches throughout
- CAT6 Data Point to Lounge and Bedroom 1
- Television Aerial Socket to Lounge and Bedroom 1
- Telephone Point to Lounge
- Hard Wired Smoke Detectors with Battery Backup
- White USB sockets to Kitchen, Lounge, Family Room and all Bedrooms
- System 3 Ventilation System

## EXTERNAL FEATURES

- Photovoltaic Solar Panels
- White PVCu Windows and Rear, Side and French Doors
- White PVCu Fascias and Soffits
- Black Rainwater Goods
- Pebble Composite Front Door
- External PIR Lights to Front and Rear
- 7.4kW Car Charging Point
- Power and Lighting to all Garages
- External Tap
- White Garage Doors
- Gardens Landscaped to Front
- Gardens Turfed to Rear
- 1.8m Close Boarded Divisional Fencing to Rear Garden^

## WARRANTIES

- 10-Year NHBC Buildmark Warranty
- 2-Year Wain Homes Warranty

\*Upgraded Choices available. \*\*Ultrafast Fibre is the latest in broadband technology that sees your broadband speeds faster than ever before - the next generation of internet, as fibre optic technology evolves, you'll already have everything you need in your property to get the benefits. Please note these services may be not fully active at completion stage until the relevant works have been completed by the service provider. ^Excluding mirrors. ^Unless stipulated otherwise on the working drawings.

Wain Homes Policy is continuous product and specification development. Images shown are for illustrative purposes only. Every effort has been made to ensure the accuracy of the information provided in this leaflet at the date of publication but it may be subject to change without notice. Specification choices are subject to build stage. Please consult with our Sales Executive to obtain the current specification or the specification of any particular plot. You should take appropriate steps to verify any information upon which you wish to rely. These particulars are intended for guidance only and their accuracy is not guaranteed. They do not constitute a contract, part of a contract or warranty. (January 2026)

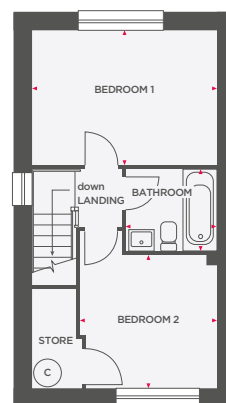
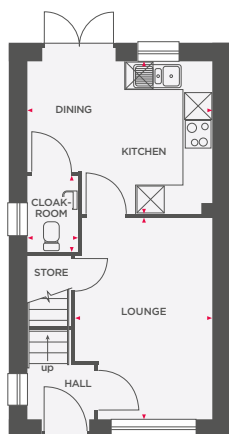
**wain**  
HOMES





# THE CANDLEWOOD

## 2 BEDROOM TERRACED/SEMI-DETACHED HOME



Lounge	2885 x 4270	9'6" x 14'0"
Kitchen/Dining	3885 x 3205	12'9" x 10'6"
Cloakroom	1050 x 1575	3'5" x 5'2"

Bedroom 1	3885 x 2815	12'9" x 9'3"
Bedroom 2	2885 x 2840	9'6" x 9'4"
Bathroom	1915 x 1715	6'3" x 5'8"

☒ Integrated appliance    © Hot water cylinder



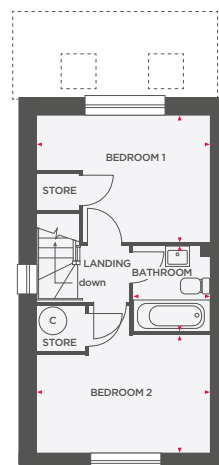
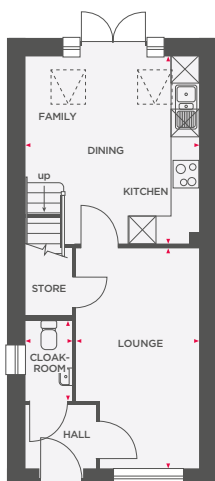
**Wain Homes abides by the New Homes Quality Code, an independent industry code introduced to champion quality new homes and better consumer outcomes.** Dimensions shown are internal finished dimensions which may vary as each home is built individually and the precise internal finishes may not always be the same. Please be aware that window and door positions could vary due to plot orientation. It is essential to view the working drawings with our Sales Executive for plot specific detail. Enquire for further information. Wain Homes Policy is continuous product and specification development. Every effort has been made to ensure the accuracy of the information provided in this leaflet at the date of publication but it may be subject to change without notice. Please consult with our Sales Executive to obtain the current specification. You should take appropriate steps to verify any information upon which you wish to rely. The sizes indicated are not intended to be used for carpet sizes, appliance spaces or items of furniture. Elevational treatments may vary to those shown. These particulars are intended for guidance only and their accuracy is not guaranteed. They do not constitute a contract, part of a contract or warranty. (January 2026)





# THE OYSTERWOOD

## 2 BEDROOM SEMI-DETACHED HOME



Lounge	2730 x 4965	8'11" x 16'3"
Kitchen/Dining/Family	3880 x 4195	12'9" x 13'9"
Cloakroom	1065 x 1780	3'6" x 5'1"

Bedroom 1	3880 x 2830	12'9" x 9'3"
Bedroom 2	3880 x 2630	12'9" x 8'8"
Bathroom	1715 x 1930	5'8" x 6'4"

☒ Integrated appliance ☒ Hot water cylinder



**Wain Homes abides by the New Homes Quality Code, an independent industry code introduced to champion quality new homes and better consumer outcomes.** Dimensions shown are internal finished dimensions which may vary as each home is built individually and the precise internal finishes may not always be the same. Please be aware that window and door positions could vary due to plot orientation. It is essential to view the working drawings with our Sales Executive for plot specific detail. Enquire for further information. Wain Homes Policy is continuous product and specification development. Every effort has been made to ensure the accuracy of the information provided in this leaflet at the date of publication but it may be subject to change without notice. Please consult with our Sales Executive to obtain the current specification. You should take appropriate steps to verify any information upon which you wish to rely. The sizes indicated are not intended to be used for carpet sizes, appliance spaces or items of furniture. Elevational treatments may vary to those shown. These particulars are intended for guidance only and their accuracy is not guaranteed. They do not constitute a contract, part of a contract or warranty. (January 2026)

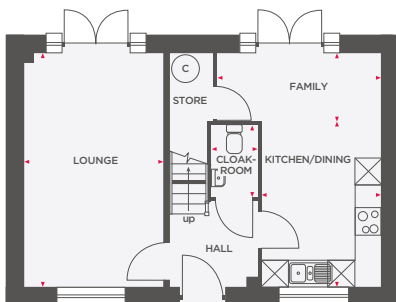




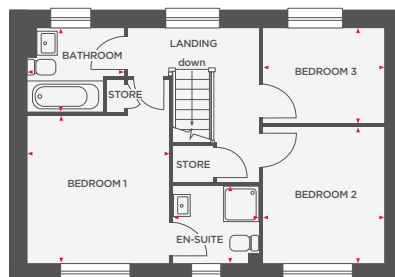


## THE ALDER

### 3 BEDROOM DETACHED HOME



Lounge	3155 x 5310	10'4" x 17'5"
Kitchen/Dining	2725 x 3765	8'11" x 12'4"
Family	1545 x 3725	5'1" x 12'3"
Cloakroom	1050 x 1650	3'5" x 5'5"



Bedroom 1	3220 x 3330	10'7" x 10'11"
En-Suite	1925 x 1730	6'4" x 5'8"
Bedroom 2	2780 x 3075	9'1" x 10'1"
Bedroom 3	2780 x 2145	9'2" x 7'0"
Bathroom	2180 x 1890	7'2" x 6'2"

☒ Integrated appliance ☒ Hot water cylinder



**Wain Homes abides by the New Homes Quality Code, an independent industry code introduced to champion quality new homes and better consumer outcomes.** Dimensions shown are internal finished dimensions which may vary as each home is built individually and the precise internal finishes may not always be the same. Please be aware that window and door positions could vary due to plot orientation. It is essential to view the working drawings with our Sales Executive for plot specific detail. Enquire for further information. Wain Homes Policy is continuous product and specification development. Every effort has been made to ensure the accuracy of the information provided in this leaflet at the date of publication but it may be subject to change without notice. Please consult with our Sales Executive to obtain the current specification. You should take appropriate steps to verify any information upon which you wish to rely. The sizes indicated are not intended to be used for carpet sizes, appliance spaces or items of furniture. Elevational treatments may vary to those shown. These particulars are intended for guidance only and their accuracy is not guaranteed. They do not constitute a contract, part of a contract or warranty. (January 2026)

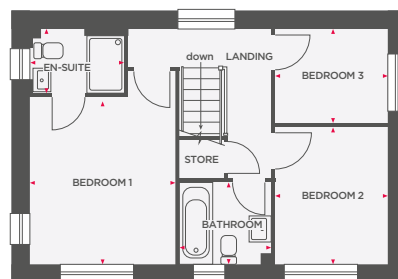
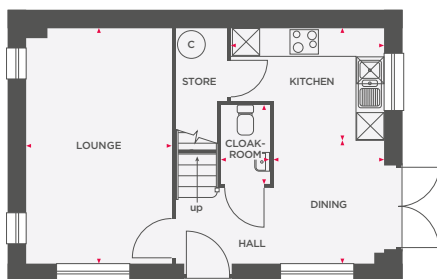
**Wain**  
HOMES





# THE AXELWOOD

## 3 BEDROOM SEMI/DETACHED HOME



Lounge	3060 x 4975	10'0" x 16'4"
Kitchen	3235 x 2405	10'7" x 7'11"
Dining	2340 x 2565	7'8" x 8'5"
Cloakroom	1020 x 1650	3'4" x 5'5"

Bedroom 1	3060 x 3515	10'0" x 11'6"
En-Suite	1940 x 1370	6'4" x 4'6"
Bedroom 2	2400 x 2895	7'10" x 9'6"
Bedroom 3	2400 x 1990	7'10" x 6'6"
Bathroom	1915 x 1715	6'3" x 5'8"

☒ Integrated appliance ☒ Hot water cylinder



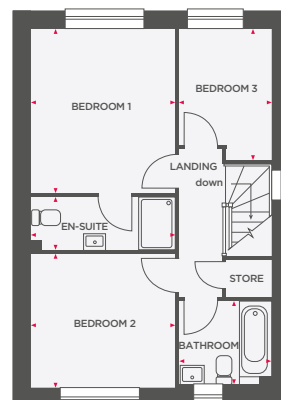
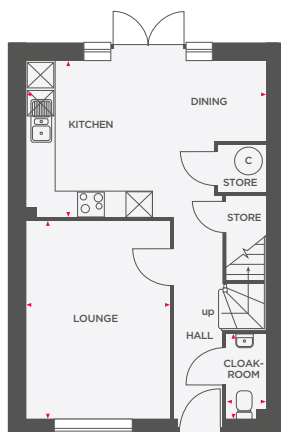
**Wain Homes abides by the New Homes Quality Code, an independent industry code introduced to champion quality new homes and better consumer outcomes.** Dimensions shown are internal finished dimensions which may vary as each home is built individually and the precise internal finishes may not always be the same. Please be aware that window and door positions could vary due to plot orientation. It is essential to view the working drawings with our Sales Executive for plot specific detail. Enquire for further information. Wain Homes Policy is continuous product and specification development. Every effort has been made to ensure the accuracy of the information provided in this leaflet at the date of publication but it may be subject to change without notice. Please consult with our Sales Executive to obtain the current specification. You should take appropriate steps to verify any information upon which you wish to rely. The sizes indicated are not intended to be used for carpet sizes, appliance spaces or items of furniture. Elevational treatments may vary to those shown. These particulars are intended for guidance only and their accuracy is not guaranteed. They do not constitute a contract, part of a contract or warranty. (January 2026)





# THE CORAL

## 3 BEDROOM SEMI-DETACHED HOME



Lounge	3255 x 4495	10'8" x 14'9"
Kitchen/Dining	5425 x 3540	17'10" x 11'7"
Cloakroom	870 x 1930	2'10" x 6'4"

Bedroom 1	3255 x 3705	10'8" x 12'2"
En-Suite	3255 x 1200	10'8" x 3'11"
Bedroom 2	3255 x 3020	10'8" x 9'11"
Bedroom 3	2080 x 2970	6'10" x 9'9"
Bathroom	2075 x 1878	6'10" x 6'2"

☒ Integrated appliance ☒ Hot water cylinder



**Wain Homes abides by the New Homes Quality Code, an independent industry code introduced to champion quality new homes and better consumer outcomes.** Dimensions shown are internal finished dimensions which may vary as each home is built individually and the precise internal finishes may not always be the same. Please be aware that window and door positions could vary due to plot orientation. It is essential to view the working drawings with our Sales Executive for plot specific detail. Enquire for further information. Wain Homes Policy is continuous product and specification development. Every effort has been made to ensure the accuracy of the information provided in this leaflet at the date of publication but it may be subject to change without notice. Please consult with our Sales Executive to obtain the current specification. You should take appropriate steps to verify any information upon which you wish to rely. The sizes indicated are not intended to be used for carpet sizes, appliance spaces or items of furniture. Elevational treatments may vary to those shown. These particulars are intended for guidance only and their accuracy is not guaranteed. They do not constitute a contract, part of a contract or warranty. (January 2026)

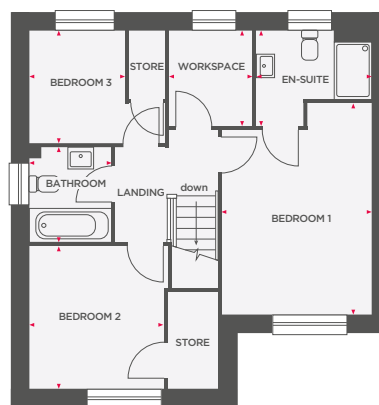
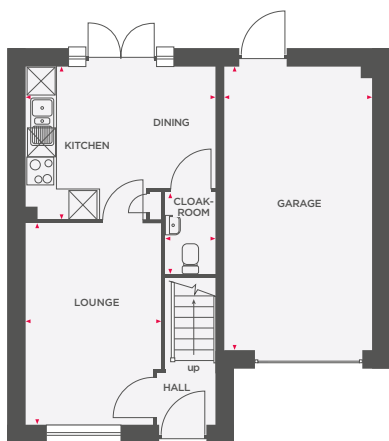






# THE WHITEBERRY

## 3 BEDROOM DETACHED HOME



Lounge	4250 x 2820	13'11" x 9'3"
Kitchen/Dining	3960 x 3200	10'6" x 13'0"
Cloakroom	1050 x 1715	3'5" x 5'8"
Garage	6035 x 3110	19'10" x 10'2"

Bedroom 1	4585 x 3175	15'0" x 10'5"
En-Suite	2435 x 1990	8'0" x 6'6"
Bedroom 2	3005 x 2820	9'10" x 9'3"
Bedroom 3	2355 x 2020	7'9" x 6'8"
Workspace	1990 x 1745	6'6" x 5'9"
Bathroom	2000 x 1715	6'7" x 5'8"

 Integrated appliance



**Wain Homes abides by the New Homes Quality Code, an independent industry code introduced to champion quality new homes and better consumer outcomes.** Dimensions shown are internal finished dimensions which may vary as each home is built individually and the precise internal finishes may not always be the same. Please be aware that window and door positions could vary due to plot orientation. It is essential to view the working drawings with our Sales Executive for plot specific detail. Enquire for further information. Wain Homes Policy is continuous product and specification development. Every effort has been made to ensure the accuracy of the information provided in this leaflet at the date of publication but it may be subject to change without notice. Please consult with our Sales Executive to obtain the current specification. You should take appropriate steps to verify any information upon which you wish to rely. The sizes indicated are not intended to be used for carpet sizes, appliance spaces or items of furniture. Elevational treatments may vary to those shown. These particulars are intended for guidance only and their accuracy is not guaranteed. They do not constitute a contract, part of a contract or warranty. (January 2026)

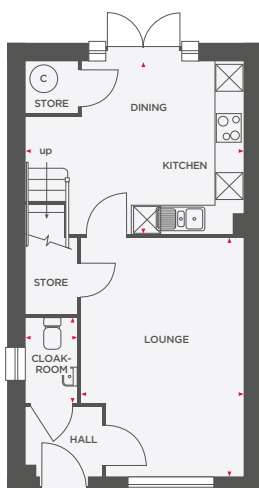
**Wain**  
HOMES



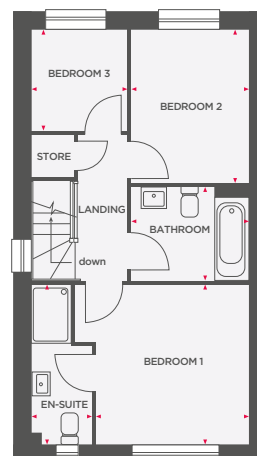


## THE LAUREL

### 3 BEDROOM SEMI-DETACHED HOME



Lounge	4930 x 3360	16'2" x 11'0"
Kitchen/Dining	3555 x 3350	11'8" x 11'0"
Cloakroom	1050 x 1750	3'5" x 5'9"



Bedroom 1	3300 x 3165	10'10" x 10'5"
En-Suite	1260 x 3290	4'2" x 10'10"
Bedroom 2	3145 x 2435	10'4" x 8'0"
Bedroom 3	2095 x 1975	6'8" x 6'4"
Bathroom	2435 x 1955	7'9" x 6'4"

☒ Integrated appliance    © Hot water cylinder



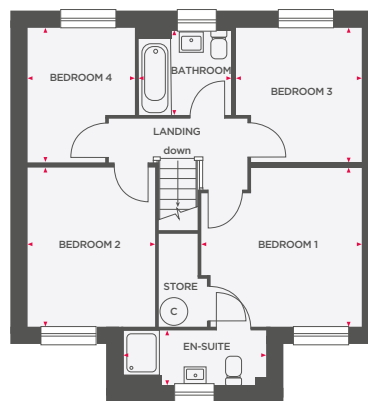
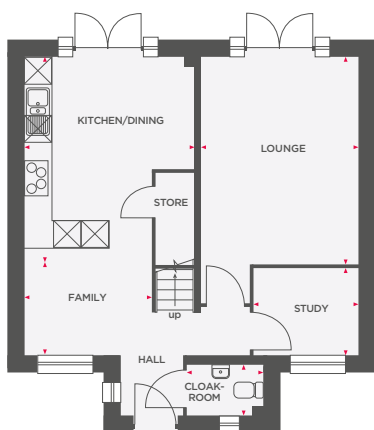
**Wain Homes abides by the New Homes Quality Code, an independent industry code introduced to champion quality new homes and better consumer outcomes.** Dimensions shown are internal finished dimensions which may vary as each home is built individually and the precise internal finishes may not always be the same. Please be aware that window and door positions could vary due to plot orientation. It is essential to view the working drawings with our Sales Executive for plot specific detail. Enquire for further information. Wain Homes Policy is continuous product and specification development. Every effort has been made to ensure the accuracy of the information provided in this leaflet at the date of publication but it may be subject to change without notice. Please consult with our Sales Executive to obtain the current specification. You should take appropriate steps to verify any information upon which you wish to rely. The sizes indicated are not intended to be used for carpet sizes, appliance spaces or items of furniture. Elevational treatments may vary to those shown. These particulars are intended for guidance only and their accuracy is not guaranteed. They do not constitute a contract, part of a contract or warranty. (January 2026)

**Wain**  
HOMES



## THE ALMOND

### 4 BEDROOM DETACHED HOME



Lounge	3510 x 4630	11'6" x 15'2"
Kitchen/Dining	3785 x 4265	12'5" x 14'0"
Family	2835 x 2395	9'4" x 7'10"
Study	2340 x 1945	7'8" x 6'5"
Cloakroom	1685 x 1250	5'6" x 4'1"

Bedroom 1	3575 x 3545	11'9" x 11'8"
En-Suite	3175 x 1210	4'0" x 10'5"
Bedroom 2	2835 x 3545	9'4" x 11'8"
Bedroom 3	2805 x 3005	9'2" x 9'10"
Bedroom 4	2395 x 3005	7'10" x 9'10"
Bathroom	2050 x 1890	6'9" x 6'2"

☒ Integrated appliance ☒ Hot water cylinder



**Wain Homes abides by the New Homes Quality Code, an independent industry code introduced to champion quality new homes and better consumer outcomes.** Dimensions shown are internal finished dimensions which may vary as each home is built individually and the precise internal finishes may not always be the same. Please be aware that window and door positions could vary due to plot orientation. It is essential to view the working drawings with our Sales Executive for plot specific detail. Enquire for further information. Wain Homes Policy is continuous product and specification development. Every effort has been made to ensure the accuracy of the information provided in this leaflet at the date of publication but it may be subject to change without notice. Please consult with our Sales Executive to obtain the current specification. You should take appropriate steps to verify any information upon which you wish to rely. The sizes indicated are not intended to be used for carpet sizes, appliance spaces or items of furniture. Elevational treatments may vary to those shown. These particulars are intended for guidance only and their accuracy is not guaranteed. They do not constitute a contract, part of a contract or warranty. (January 2026)

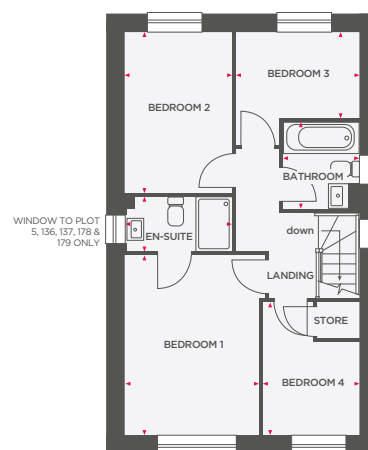
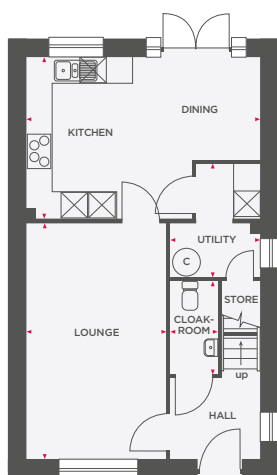
**Wain**  
HOMES





## THE BAYBERRY

### 4 BEDROOM SEMI/DETACHED HOME



Lounge	3185 x 5360	10'5" x 17'7"
Kitchen/Dining	5310 x 3665	17'5" x 12'0"
Utility	2050 x 2585	6'9" x 8'6"
Cloakroom	1080 x 2115	3'7" x 6'11"

Bedroom 1	3055 x 4095	10'0" x 13'5"
En-Suite	2385 x 1205	7'10" x 3'11"
Bedroom 2	2435 x 3635	8'0" x 11'11"
Bedroom 3	2790 x 2555	9'2" x 8'5"
Bedroom 4	2170 x 3015	7'1" x 9'11"
Bathroom	1715 x 1950	5'7" x 6'5"

☒ Integrated appliance ☒ Hot water cylinder



**Wain Homes abides by the New Homes Quality Code, an independent industry code introduced to champion quality new homes and better consumer outcomes.** Dimensions shown are internal finished dimensions which may vary as each home is built individually and the precise internal finishes may not always be the same. Please be aware that window and door positions could vary due to plot orientation. It is essential to view the working drawings with our Sales Executive for plot specific detail. Enquire for further information. Wain Homes Policy is continuous product and specification development. Every effort has been made to ensure the accuracy of the information provided in this leaflet at the date of publication but it may be subject to change without notice. Please consult with our Sales Executive to obtain the current specification. You should take appropriate steps to verify any information upon which you wish to rely. The sizes indicated are not intended to be used for carpet sizes, appliance spaces or items of furniture. Elevational treatments may vary to those shown. These particulars are intended for guidance only and their accuracy is not guaranteed. They do not constitute a contract, part of a contract or warranty. (January 2026)

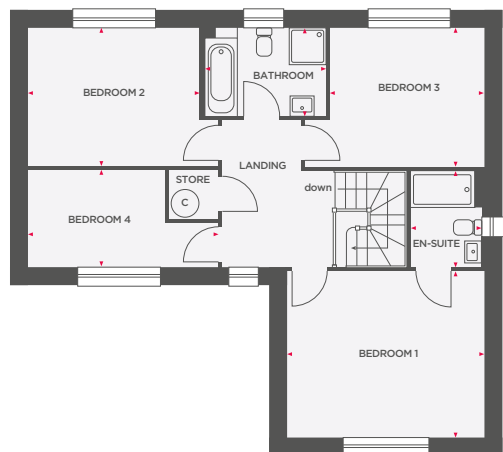
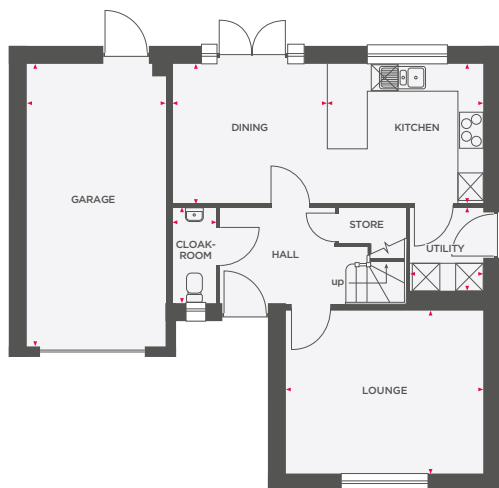






# THE FOXGLOVE

## 4 BEDROOM DETACHED HOME



Lounge	4300 x 3565	14'1" x 11'8"
Kitchen	3400 x 3015	11'2" x 9'11"
Dining	3375 x 3015	11'1" x 9'11"
Utility	1605 x 1820	5'3" x 6'0"
Cloakroom	935 x 2095	3'1" x 6'10"
Garage	2990 x 6170	9'8" x 20'2"

Bedroom 1	4300 x 3605	14'1" x 11'10"
En-Suite	1555 x 2090	5'1" x 6'10"
Bedroom 2	3745 x 3015	12'3" x 9'11"
Bedroom 3	3345 x 3000	10'11" x 9'10"
Bedroom 4	4145 x 2095	13'7" x 6'10"
Bathroom	2620 x 1930	8'7" x 6'4"

☒ Integrated appliance    © Hot water cylinder



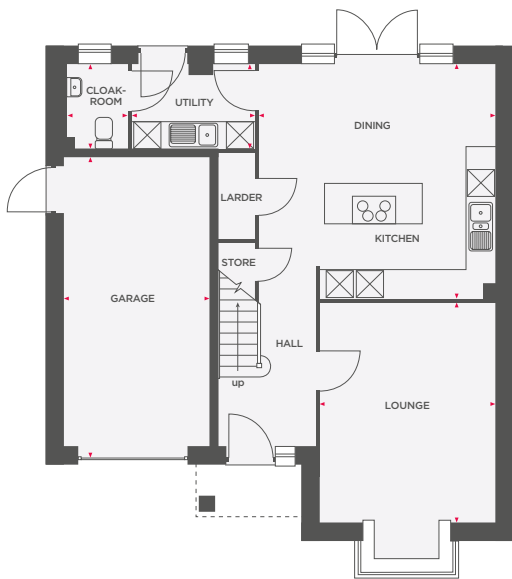
**Wain Homes abides by the New Homes Quality Code, an independent industry code introduced to champion quality new homes and better consumer outcomes.** Dimensions shown are internal finished dimensions which may vary as each home is built individually and the precise internal finishes may not always be the same. Please be aware that window and door positions could vary due to plot orientation. It is essential to view the working drawings with our Sales Executive for plot specific detail. Enquire for further information. Wain Homes Policy is continuous product and specification development. Every effort has been made to ensure the accuracy of the information provided in this leaflet at the date of publication but it may be subject to change without notice. Please consult with our Sales Executive to obtain the current specification. You should take appropriate steps to verify any information upon which you wish to rely. The sizes indicated are not intended to be used for carpet sizes, appliance spaces or items of furniture. Elevational treatments may vary to those shown. These particulars are intended for guidance only and their accuracy is not guaranteed. They do not constitute a contract, part of a contract or warranty. (January 2026)



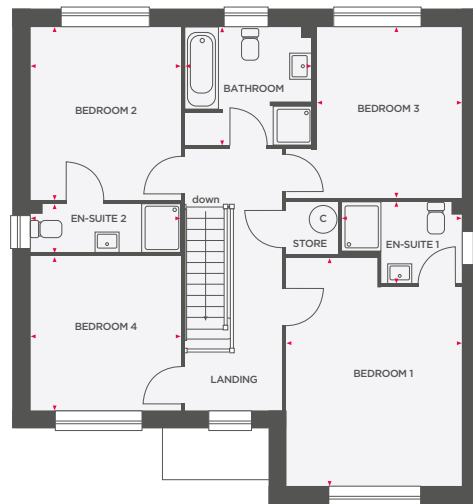


## THE WILLOW

### 4 BEDROOM DETACHED HOME



Lounge	3625 x 4545	11'11" x 14'11"
Kitchen/Dining	4880 x 4815	16'0" x 15'10"
Utility	2535 x 1745	8'4" x 5'9"
Cloakroom	1270 x 1745	4'2" x 5'9"
Garage	3030 x 6005	9'11" x 19'8"



Bedroom 1	3625 x 4685	11'11" x 15'4"
En-Suite 1	2485 x 1675	8'2" x 5'6"
Bedroom 2	3006 x 3520	9'10" x 11'7"
En-Suite 2	3095 x 1000	10'2" x 3'3"
Bedroom 3	3083 x 3575	10'1" x 11'9"
Bedroom 4	3095 x 3125	10'2" x 10'3"
Bathroom	2625 x 2440	8'7" x 8'0"

☒ Integrated appliance ☒ Hot water cylinder



**Wain Homes abides by the New Homes Quality Code, an independent industry code introduced to champion quality new homes and better consumer outcomes.** Dimensions shown are internal finished dimensions which may vary as each home is built individually and the precise internal finishes may not always be the same. Please be aware that window and door positions could vary due to plot orientation. It is essential to view the working drawings with our Sales Executive for plot specific detail. Enquire for further information. Wain Homes Policy is continuous product and specification development. Every effort has been made to ensure the accuracy of the information provided in this leaflet at the date of publication but it may be subject to change without notice. Please consult with our Sales Executive to obtain the current specification. You should take appropriate steps to verify any information upon which you wish to rely. The sizes indicated are not intended to be used for carpet sizes, appliance spaces or items of furniture. Elevational treatments may vary to those shown. These particulars are intended for guidance only and their accuracy is not guaranteed. They do not constitute a contract, part of a contract or warranty. (January 2026)

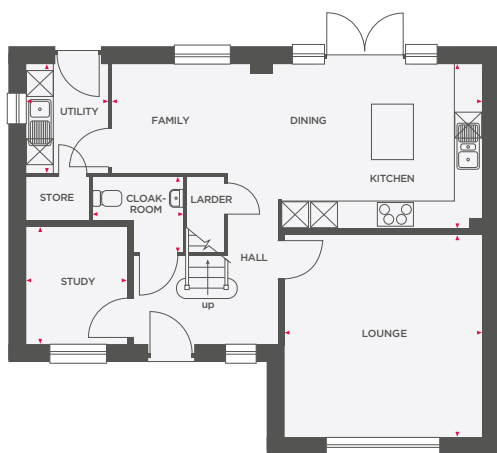




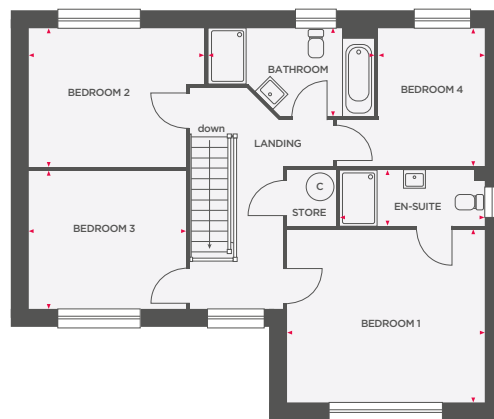


# THE WITCHAZEL

## 4 BEDROOM DETACHED HOME



Lounge	4300 x 4400	14'1" x 14'5"
Kitchen/Dining/Family	8045 x 3575	26'5" x 11'9"
Study	2200 x 2550	7'3" x 8'4"
Utility	1790 x 2365	5'10" x 7'9"
Cloakroom	1975 x 1645	6'6" x 5'5"



Bedroom 1	4300 x 3740	14'1" x 12'3"
En-Suite	3740 x 4300	3'11" x 10'4"
Bedroom 2	3815 x 3015	12'6" x 9'11"
Bedroom 3	3425 x 2995	11'3" x 9'10"
Bedroom 4	2315 x 2985	7'7" x 9'10"
Bathroom	3595 x 1915	11'10" x 6'3"

☒ Integrated appliance ☒ Hot water cylinder



**Wain Homes abides by the New Homes Quality Code, an independent industry code introduced to champion quality new homes and better consumer outcomes.** Dimensions shown are internal finished dimensions which may vary as each home is built individually and the precise internal finishes may not always be the same. Please be aware that window and door positions could vary due to plot orientation. It is essential to view the working drawings with our Sales Executive for plot specific detail. Enquire for further information. Wain Homes Policy is continuous product and specification development. Every effort has been made to ensure the accuracy of the information provided in this leaflet at the date of publication but it may be subject to change without notice. Please consult with our Sales Executive to obtain the current specification. You should take appropriate steps to verify any information upon which you wish to rely. The sizes indicated are not intended to be used for carpet sizes, appliance spaces or items of furniture. Elevational treatments may vary to those shown. These particulars are intended for guidance only and their accuracy is not guaranteed. They do not constitute a contract, part of a contract or warranty. (January 2026)

