



Parliament Street, Chippenham  
Chippenham, SN14 0DE

**STRAKERS**



50 Parliament Street, Chippenham,  
Wiltshire, SN14 0DE

A beautifully presented three bedroom terraced house in a mature location within easy access of the town centre and train station with an enclosed rear garden laid mainly to lawn with off road parking.

- Older Style Property
- Central Location
- Three Bedrooms
- Two Reception Rooms
- Well Presented
- Good Size Garden
- Driveway Parking To Rear
- Viewing Recommended

£230,000





Beautifully presented older style three bedroom terraced property pleasantly situated in a central location within easy access of the town centre and mainline railway station. The ground floor accommodation comprises entrance hallway, sitting room, dining room, kitchen, rear lobby and bathroom whilst to the first floor are three bedrooms. Externally the property has a good size rear garden laid mainly to lawn with patio terrace and feature well and allocated driveway parking to the rear. An internal viewing is highly recommended in order to appreciate all that this lovely property has to offer.

### Situation

The property is just a short walk away from the town and all amenities which include a public library and the pleasant John Coles Park and riverside walks and cycleways. There is convenient pedestrian access to the mainline railway station (London Paddington - approx. 75 minutes). The M4 motorway, the A4 and the A420 offer excellent motor commuting to the major centres of Bath, Bristol, Swindon & London. There is a good choice of private schooling and Chippenham also offers excellent secondary schools and primary schools, together with further education at Wiltshire College.

### Property Information

Council Tax Band; B

Freehold

Mains water, drainage and electricity connected.

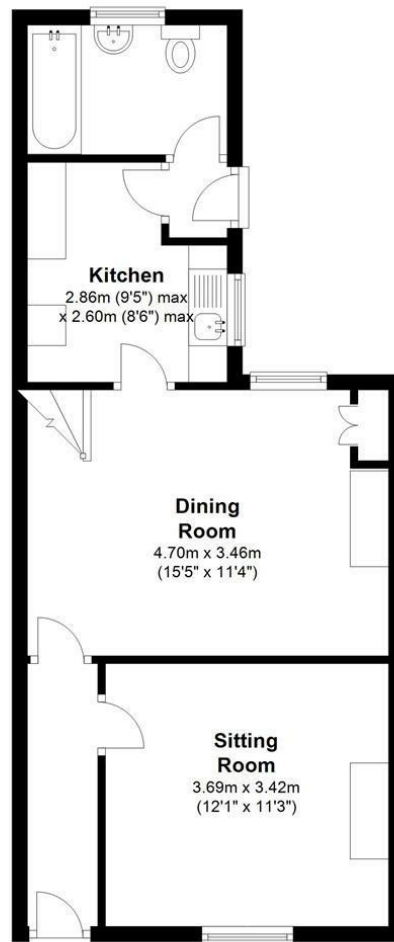
Gas Fired Central Heating

EPC Rating; D



### Ground Floor

Approx. 45.2 sq. metres (486.6 sq. feet)



### First Floor

Approx. 32.8 sq. metres (353.2 sq. feet)



Total area: approx. 78.0 sq. metres (839.8 sq. feet)

50 Parliament Street, Chippenham, Wiltshire, SN14 0DE

Tel: 01249 652717

Email: [chippenham@strakers.co.uk](mailto:chippenham@strakers.co.uk)

[www.strakers.co.uk](http://www.strakers.co.uk)

■ Chippenham

■ Corsham

■ Devizes

■ Malmesbury

■ Auctions

■ Lettings

■ New Homes

■ Professional Dept