

BELVOIR!

Nottingham Sales
01158248800
notts-sales@belvoir.co.uk

Woodthorpe Drive, Woodthorpe, Nottingham, NG5 4GG



Asking Price £125,000 Leasehold



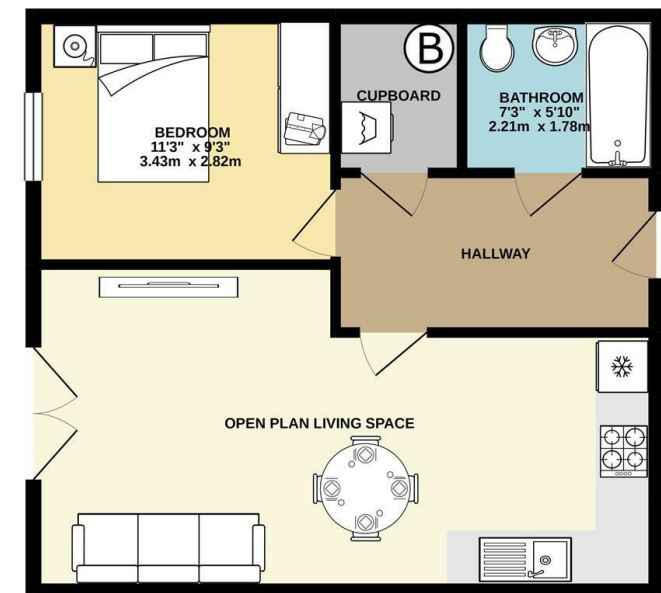
belvoir.co.uk



Accommodation;
Communal Hallway
Private Entrance Hall
Generous Open Plan Living Room
Modern Fitted Kitchen with Appliances
Double Bedroom
Bathroom with Shower
Car Parking
Currently Let at £500 pcm
Ground Rent £150 pa
Service Charge £678.56
Lease Details 250 years from December 2004



GREENBANKS, WOODTHORPE DRIVE, NOTTINGHAM



Energy Efficiency Rating		
	Current	Potential
Very energy efficient - lower running costs		
(92 plus) A		
(81-91) B		
(69-80) C		
(55-68) D		
(39-54) E		
(21-38) F		
(1-20) G		
Not energy efficient - higher running costs		
	79	86
England & Wales	EU Directive 2002/91/EC	