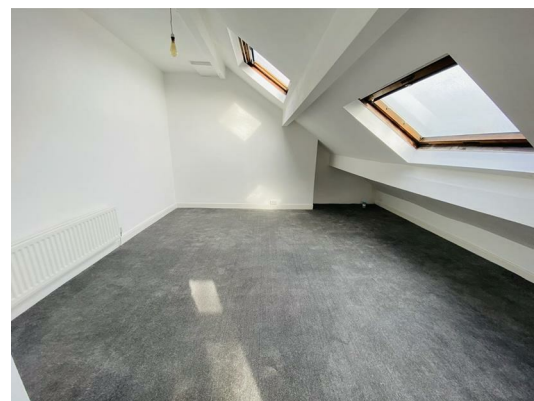




1 Milford Place, Bradford, West Yorkshire, BD9 4RU £575

THREE BEDROOM END OF TERRACE PROPERTY IN A POPULAR RESIDENTIAL LOCATION

This much improved home has been finished to a high standard and boasts some impressive original features. Comprising of lounge, kitchen, cellar, two first floor bedrooms, bathroom and a generously sized second floor bedroom. The property benefits from double glazing and gas central heating.



GROUND FLOOR

ENTRANCE

LOUNGE

Pleasant reception room with double glazed window and central heating radiator. Original cornice, ceiling rose and feature fire place with inset log burner.

KITCHEN

Modern fitted wall and base units to two sides with a contrasting work surface over. Integrated electric oven with gas hob and extractor over. Double glazed window and wood flooring. Leading to stairs to...

CELLAR

Useful storage space.

FIRST FLOOR

BEDROOM

Bedroom with fitted storage, double glazed window and central heating radiator.

BEDROOM

Double glazed window and central heating radiator.

BATHROOM

Modern fitted bathroom suite in white comprising of low flush W.c, hand wash basin on vanity unit and bath with screen and shower over. Heated towel rail and double glazed window.

SECOND FLOOR

BEDROOM

Large bedroom with 2 skylight windows and central heating radiator.

EXTERNAL

Mature plants and shrubs to the front.

