



Barnwell Road, SW2

4 bedroom house for sale

£1,150,000

Freehold

Property Details

Keating Estates are proud to offer a stunning four-bedroom Victorian terraced house perfectly located in this hugely popular residential pocket between Brixton and Herne Hill. As you enter the property you are greeted by a dual-aspect reception room with high ceilings, a feature fireplace, and stylish herringbone flooring. The eat-in kitchen is a real talking point in this property, having been fully extended to make use of all available space, integrated appliances and a cosy dining area overlooking the garden with large skylights, allowing natural light to fill this generous room. The kitchen opens out to the south-east facing, low-maintenance garden, an ideal spot to enjoy the warmer months. The ground floor is completed by a conveniently located WC. On the first floor, three of the bedrooms, two very well proportioned and the third ideal as a nursery, although could easily be repurposed as a study or indeed anything that the purchaser desires. There is a tasteful family bathroom located on this floor, complete with a freestanding roll-top bath and stylishly tiled floor. The master bedroom resides on the top floor and is a fantastic size, bright and airy thanks to the multiple Velux windows and is completed by a spacious and modern en-suite bathroom.

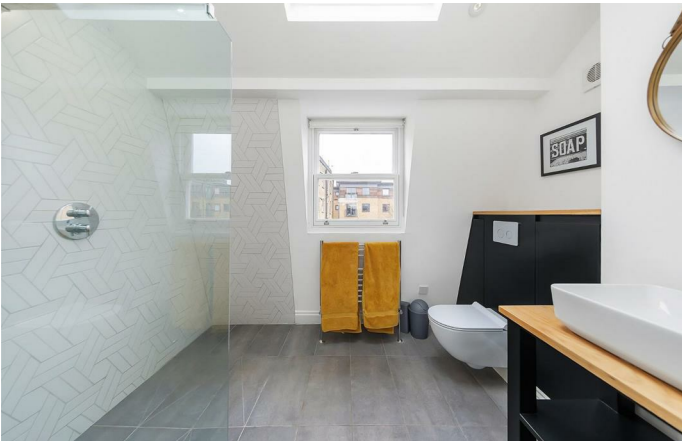
Council tax band

EPC rating E (50)

Features

- Four double bedrooms
- Two Bathrooms and a separate WC
- Victorian terraced house
- South-east facing private garden
- 1435 square feet of internal space
- Charming mix of modern design and characterful features
- Local amenities in moments
- Sought-after location in between Brixton and Herne Hill
- Brockwell Park within easy reach
- Freehold





Barnwell Road, SW2



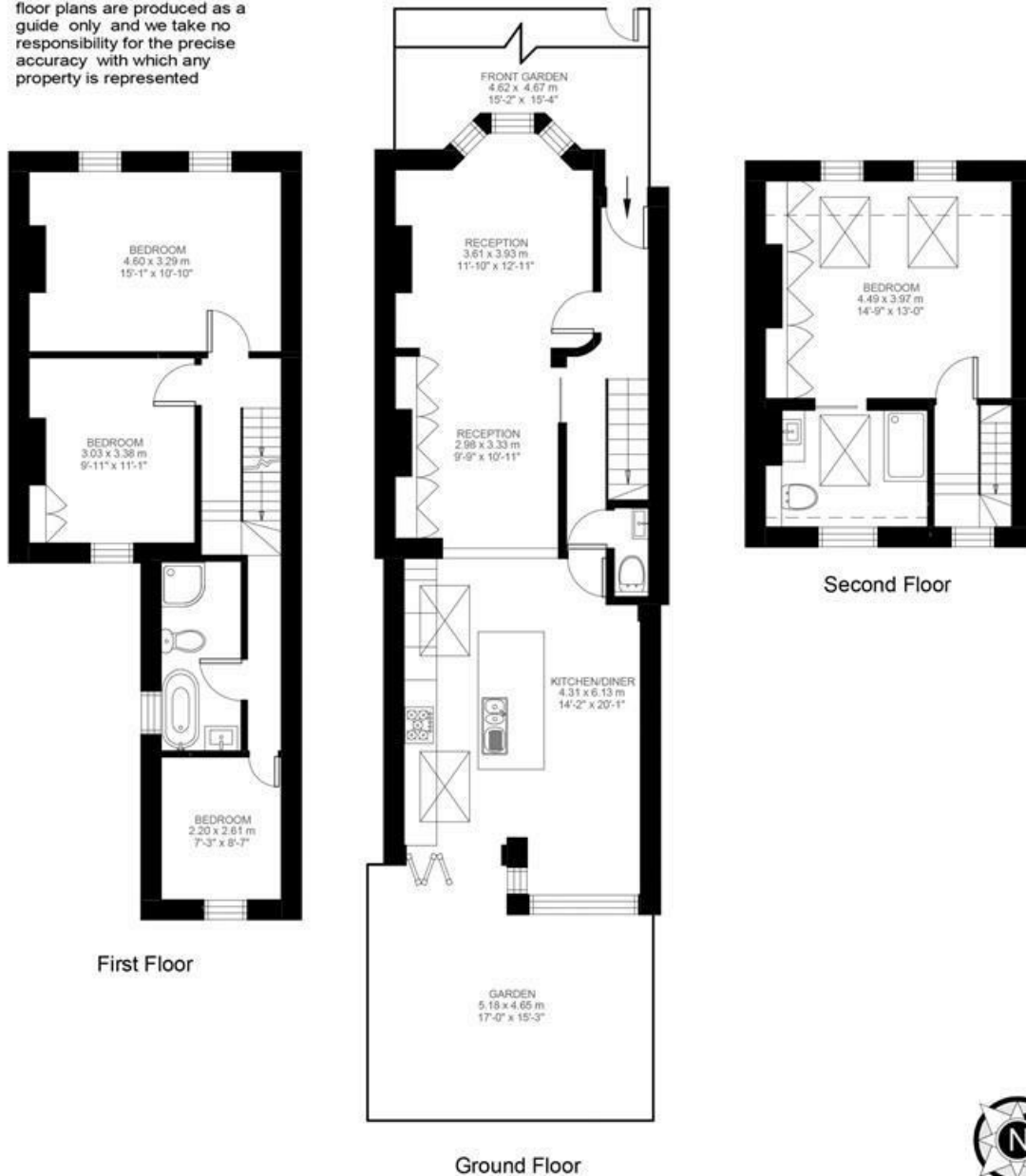
4 Bedroom House

Approx internal area:

1435 sqft 133 sqm

While we do try our very best, floor plans are produced as a guide only and we take no responsibility for the precise accuracy with which any property is represented

Barnwell Road



Barnwell Road, SW2

