

241 Deansgate, Manchester, Lancashire, M3 4EL  
Tel: 0161 637 8336  
Email: [contactus@ascendproperties.com](mailto:contactus@ascendproperties.com)  
[www.ascendproperties.com](http://www.ascendproperties.com)

# Ascend

Built on higher standards



## Rivergate House, Wilburn Basin, Salford

£900 PCM

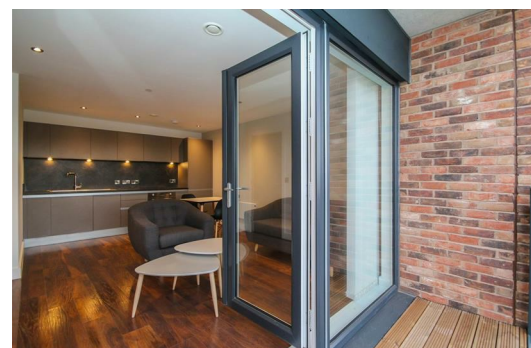
We've got a fantastic one bedroom apartment up for grabs inside this brand new, striking development. Occupying a prime waterside position alongside the River Irwell, this stunning apartment has been built to an incredibly high standard throughout.

Situated just a stone's throw from the beating heart of Manchester, this property is perfectly placed for both work and play. With cracking transport links like Deansgate train station and the Metrolink close by, the entire city is at your fingertips.

Take a step inside your luxury apartment and you'll find a bright swanky design with modern features and top-of-the-range finishing touches. With superb views across the city from your imposing windows and the added bonus of a super-spacious interior, you'll see that absolutely no stone has been left unturned whilst kitting this apartment out to the standard you'd expect from Manchester city living. It really doesn't get much better than this.

If you're interested in having a closer look, or have any questions, do get in touch. And just so you know the photographs are representative of a show flat specification, so fixtures and fittings may vary.

Available 9th April 2021







Energy Efficiency Rating		Current	Target
Energy A	83	83	83
Energy B	83	83	83
Energy C	83	83	83
Energy D	83	83	83
Energy E	83	83	83
Energy F	83	83	83
Energy G	83	83	83
England & Wales		83	83

Environmental Impact (CO <sub>2</sub> ) Rating		Current	Target
CO <sub>2</sub> A	83	83	83
CO <sub>2</sub> B	83	83	83
CO <sub>2</sub> C	83	83	83
CO <sub>2</sub> D	83	83	83
CO <sub>2</sub> E	83	83	83
CO <sub>2</sub> F	83	83	83
CO <sub>2</sub> G	83	83	83
England & Wales		83	83