



1,222
sq ft



3



2



1

REDBRIK
ESTATE AGENTS

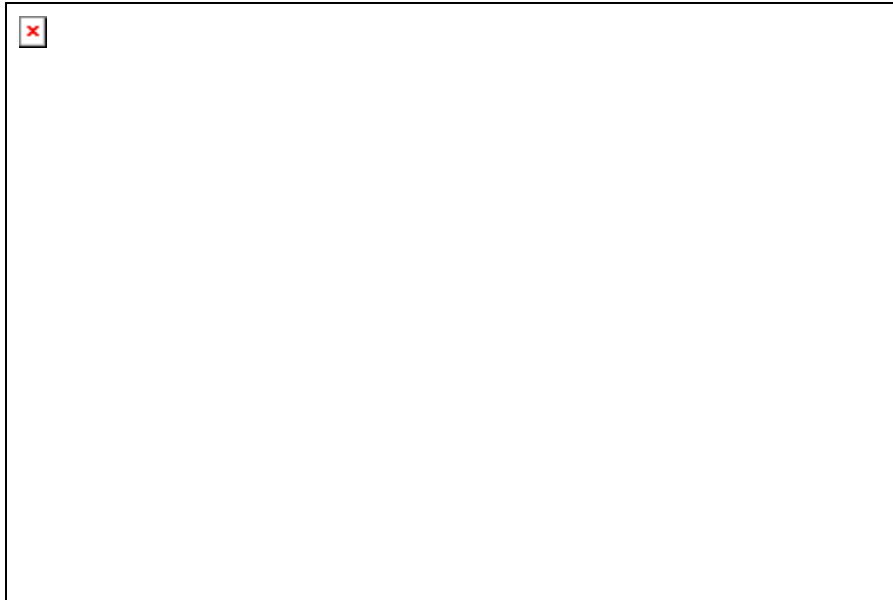
Helping you find
your home at...

Caulfield Close, Chesterfield
Asking Price Of £280,000

This beautifully styled and exquisitely presented three bedroom detached home is situated on a sought-after development in the popular suburb of Dunston.

- Three Bedroom Detached House
- Modern Fitted Kitchen With Integrated Appliances
- Open Plan Kitchen & Dining Area
- Bay Windowed Living Room
- Utility Room & Downstairs W/C
- Three Generous Bedrooms
- Principal Bedroom With Luxury En-suite & Fitted Wardrobes
- Enclosed Rear Garden With Lawn & Beautifully Finished Patio Area
- Off Road Parking Including A Garage
- Energy Rating - B, Tenure; Freehold.





This is for our family...

- You'll love this newly built property which offers luxurious feel throughout.
- Perfect for the family is a tiered garden which has been laid with an impressive patio and also offers a generous lawn area.
- Providing three generous bedrooms and a luxury bathroom on the first floor perfect for a growing family.
- It's situated in the catchment area of many highly regarded schools.
- Located on the outskirts of the beautiful Peak District National Park, the walking opportunities are incredible.

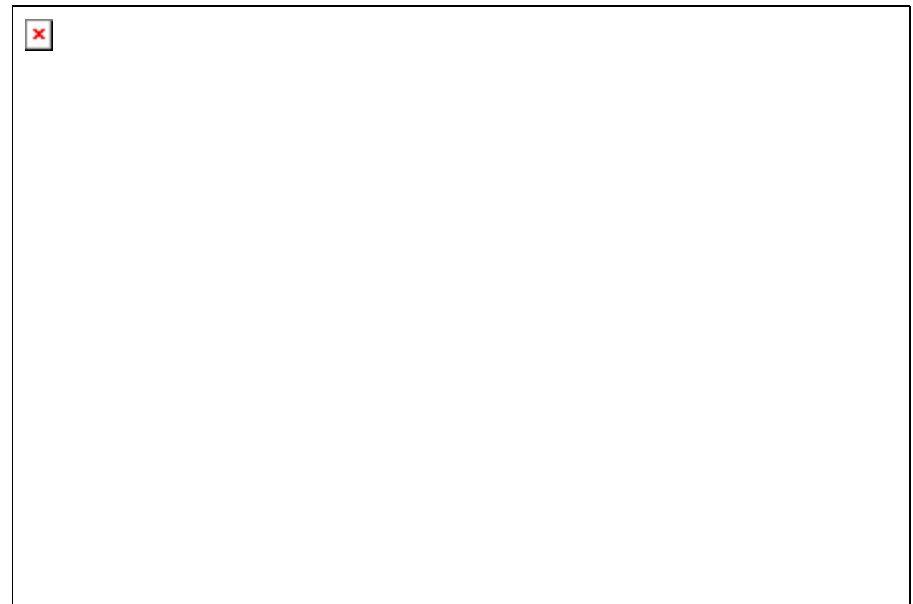
Buying for myself and my partner...

- Contemporary styled throughout with great attention to detail the property is ready to move straight into.
- The private rear garden provides a fantastic space for entertaining friends.
- Offering an impressive principal bedroom with en-suite and fitted wardrobes.
- The open plan kitchen & dining is fully integrated and opens up onto the amazing patio space.

I'm looking for an investment...

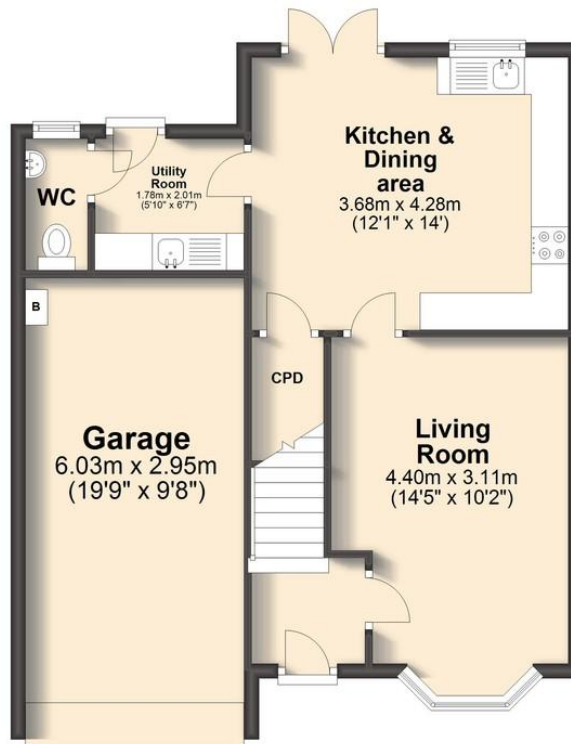
- Prospective tenants would love the contemporary styling, space and beautiful garden.





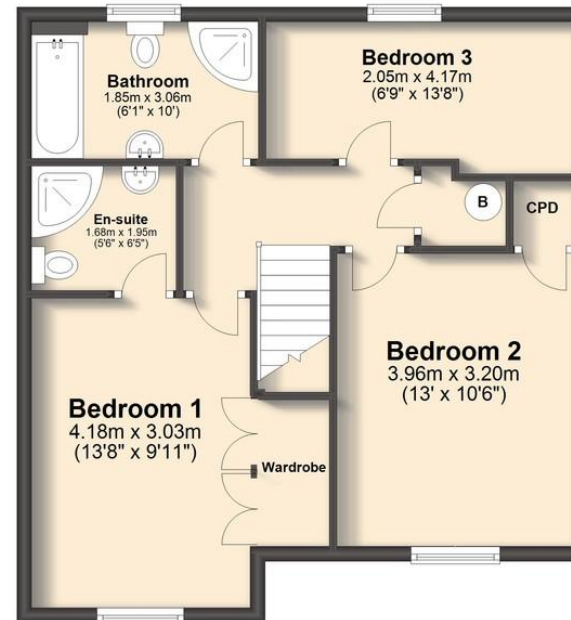
Ground Floor

Approx. 59.2 sq. metres (637.5 sq. feet)



First Floor

Approx. 54.3 sq. metres (584.9 sq. feet)



Total area: approx. 113.6 sq. metres (1222.4 sq. feet)

We endeavour to make these particulars as accurate as possible, but they should only be used as guidance and they do not constitute any part of the contract. All measurements are approximate and no guarantees are made to the services, heating systems, appliances (if any) or fittings as to their working order and no warranty can be given or implied.

You may download, store and use this material for your own personal use and research. You may not republish, retransmit, redistribute or otherwise make the material available to any party or make the same available on any website, on or offline service or hard copy without the website owner's express written consent. The website owner's copy right must remain on all reproductions of material taken from this website.