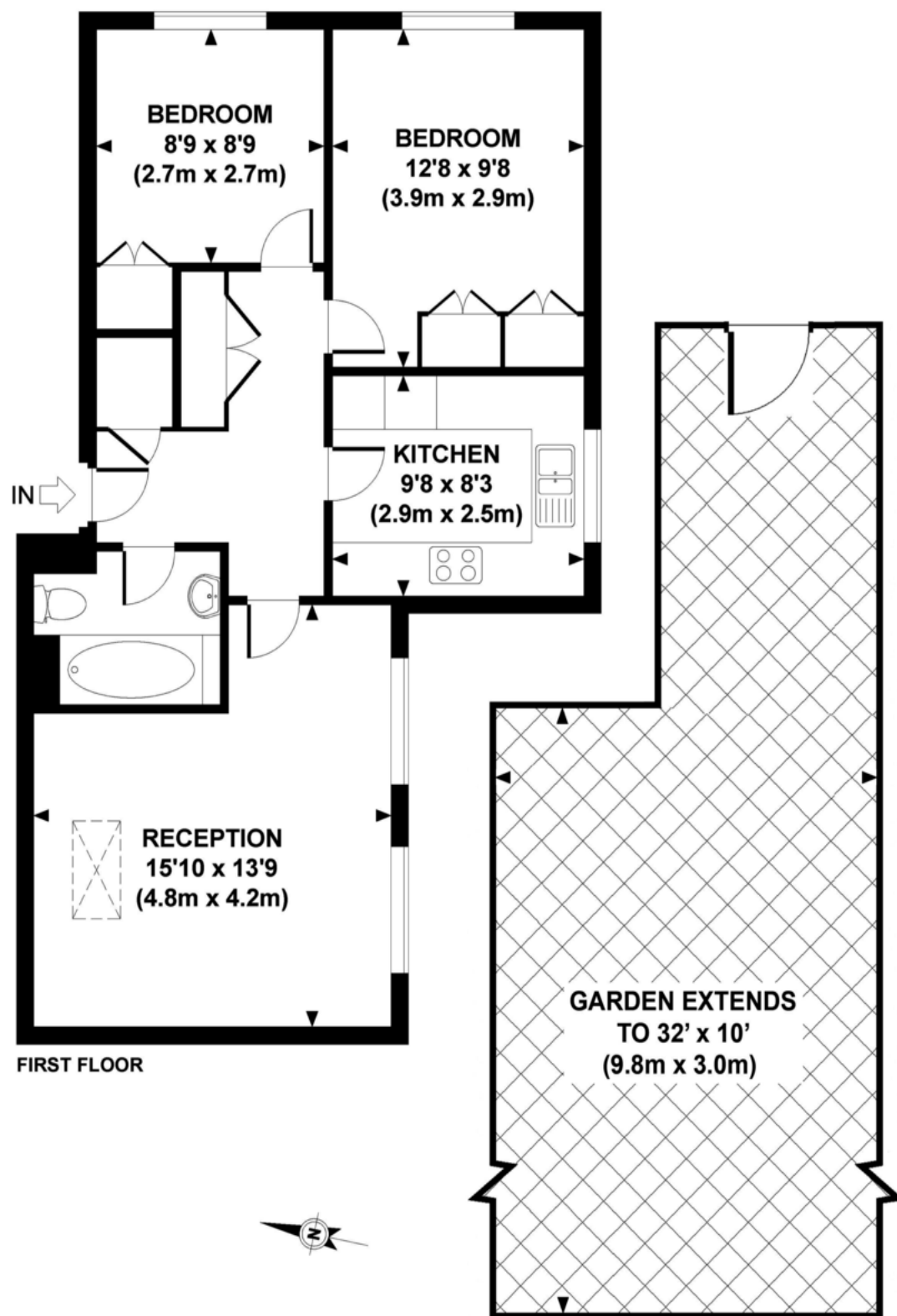


Taylors Green, W3



APPROXIMATE GROSS INTERNAL AREA 625 SQ FT / 58.1 SQ M

Whilst every attempt has been made to ensure the accuracy of this floor plan, measurements of door, windows, rooms and all other items are approximate. No responsibility is taken for any error, omission or mis-statement. This floor plan is for illustrative purposes only, and should be treated as such.



Taylors Green, London, W3 7PE

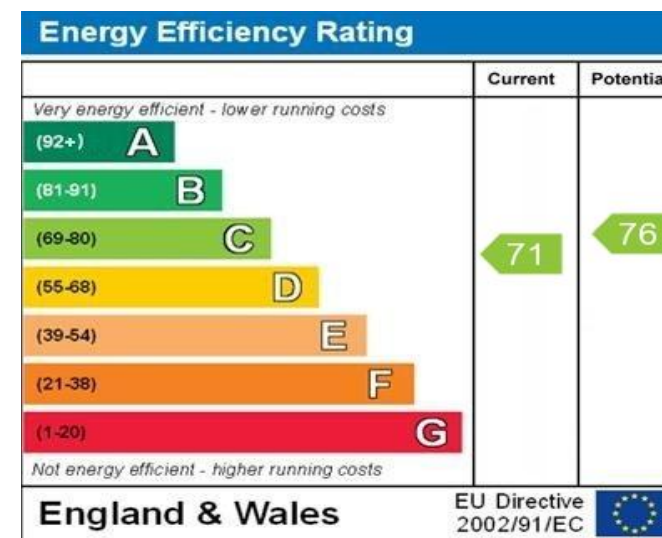
£175,000 Freehold

Key Features

- First Floor Apartment
- Two Double Bedrooms
- Built In Wardrobes
- Long Lease
- Shared Ownership
- Private Garden
- Sought After Location
- No Chain

Description

A rarely available two double bedroom first floor apartment conveniently located only moments to East Acton tube. The property which is available on the shared ownership scheme has been well maintained throughout by the current owners and offers a rare chance to acquire a good size apartment in a sought after location and with its own private gardens.



WWW.EPC4U.COM