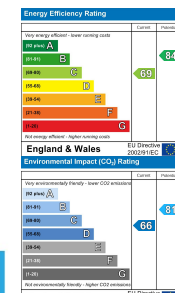


**473 Gerald Road, Haverfordwest, Dyfed, SA61 2TN**

- End Of Terrace House
- Kitchen/Diner
- Gas Central Heating
- Refurbished February 2021
- Ideal First Time Buyer/Investment
- Three Bedrooms
- Part uPVC Double Glazed
- Edge Of Town Location
- No Chain
- EPC Rating C

**Price £115,000**

COMPUTER-LINKED OFFICES THROUGHOUT WEST WALES and Associated office in Mayfair, London



VIEWING: By appointment only via the Agents.  
TENURE: We are advised Freehold  
SERVICES: We have not checked or tested any of the services or appliances at the property.  
TAX: Band C

RS/RS/02/OK

WE WOULD LIKE TO POINT OUT THAT OUR PHOTOGRAPHS ARE TAKEN WITH A DIGITAL CAMERA WITH A WIDE ANGLE LENS. These particulars have been prepared in all good faith to give a fair overall view of the property. If there is any point which is of specific importance to you, please check with us first, particularly if travelling some distance to view the property. We would like to point out that the following items are excluded from the sale of the property: Fitted carpets, curtains and blinds, curtain rods and poles, light fittings, sheds, greenhouses - unless specifically specified in the sales particulars. Nothing in these particulars shall be deemed to be a statement that the property is in good structural condition or otherwise. Services, appliances and equipment referred to in the sales details have not been tested, and no warranty can therefore be given. Purchasers should satisfy themselves on such matters prior to purchase. Any areas, measurements or distances are given as a guide only and are not precise. Room sizes should not be relied upon for carpets and furnishings.

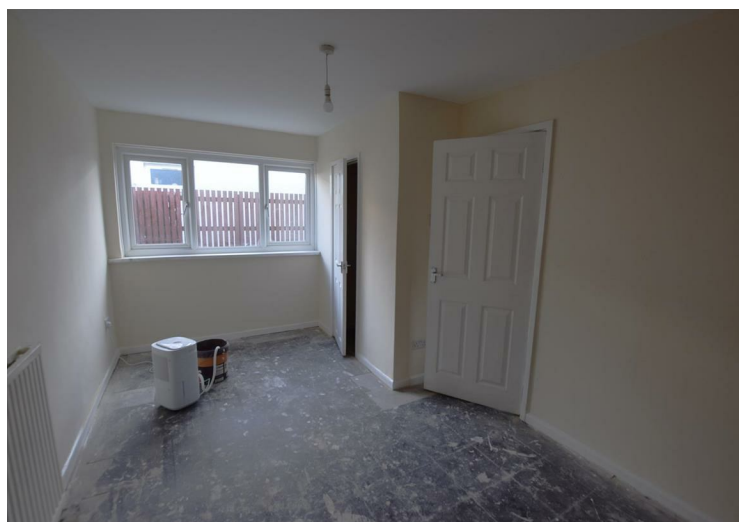
COMPUTER-LINKED OFFICES THROUGHOUT WEST WALES and Associated office in Mayfair, London



\*\*\*NO CHAIN\*\*\*Tree bedroom end of terrace house situated on the edge of Haverfordwest with views of the Preseli Mountains. Comprising hallway, lounge, kitchen/diner, family bathroom, store cupboard, WC, and three bedrooms. This property has been completely refurbished in February 2021, with a new kitchen, bathroom, electrics, gas boiler, and redecorated throughout. Benefiting from gas central heating and part uPVC double glazed. Externally there is a garden to the front of the property which is laid to lawn and a yard to the rear. Ideal first-time buyer/investment property.

The market town of Haverfordwest has numerous facilities and amenities on offer, which include a good range of shops, retail parks, primary and secondary schools, sixth form college, hospital, mainline train station, new leisure centre/swimming pool, cinema, restaurants, pubs etc.

The beautiful Pembrokeshire coast is only 6 miles to the south-west, at the long sandy beach of Broad Haven, and the famous surfing beach of Newgale 7.5 miles to the northwest. The famous Pembrokeshire Coast Path gives miles of wonderful walks on which to enjoy the stunning coastline, wildflowers, and birdlife.



**HALLWAY**

**BEDROOM**

10'5" max x 15'3" (3.194 max x 4.669)

**BATHROOM**

7'1" x 5'9" (2.160 x 1.753)

**WC**

**STORE CUPBOARD**

**BEDROOM**

8'10" max x 15'3" (2.715 max x 4.672)

**LOUNGE**

10'7" max x 15'3" (3.236 max x 4.668)

**KITCHEN/DINER**

8'11" x 15'8" (2.740 x 4.790)

**BEDROOM**

7'4" x 7'9" (2.247 x 2.363)

**LOWER FLOOR HALLWAY**



**DIRECTIONS**

From our office in Haverfordwest proceed around the one-way system heading back down Barn Street, at the bottom bear left, and head up City Road. Continue to the top of the hill turning left into Hawthorn Rise, then turn into Gerald Road and the property is on the left

See our website [www.westwalesproperties.co.uk](http://www.westwalesproperties.co.uk) in our TV channel to view our location videos about the area.