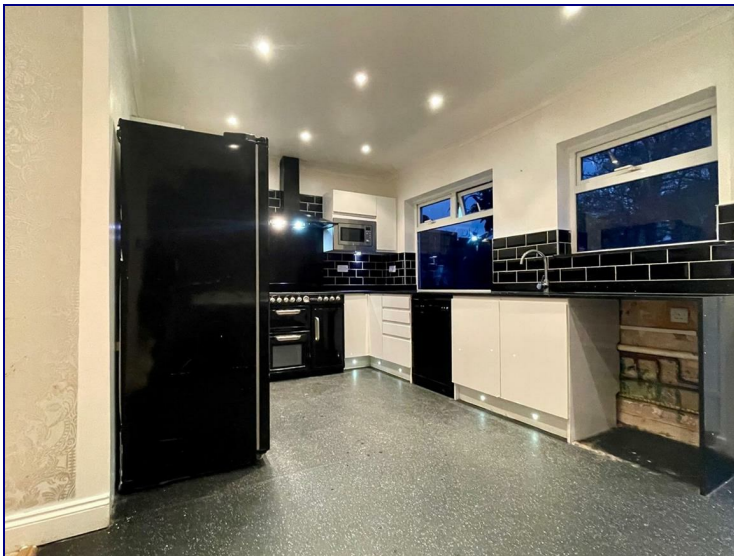


Charlton Road, London, N9 8HH



£1,600

NEW TO THE MARKET

Kings are proud to introduce this SPACIOUS 2 bedroom house! This house includes 2 DOUBLE bedroom, MODERN kitchen and a FAMILY SIZE GARDEN!

Located less than 10 minutes drive from Edmonton Green Shopping center and Edmonton Green station

CALL NOW TO BOOK A VIEWING!!



Energy Efficiency Rating		
	Current	Potential
<i>Very energy efficient - lower running costs</i>		
(92 plus) A		
(81-91) B		
(69-80) C		
(55-68) D		
(39-54) E		
(21-38) F		
(1-20) G		
<i>Not energy efficient - higher running costs</i>		
England & Wales	EU Directive 2002/91/EC	

Environmental Impact (CO ₂) Rating		
	Current	Potential
<i>Very environmentally friendly - lower CO2 emissions</i>		
(92 plus) A		
(81-91) B		
(69-80) C		
(55-68) D		
(39-54) E		
(21-38) F		
(1-20) G		
<i>Not environmentally friendly - higher CO2 emissions</i>		
England & Wales	EU Directive 2002/91/EC	

