



Linden Gardens, London, W4 2EH

A beautifully presented raised ground floor one bedroomed garden flat situated in this lovely central Chiswick location just a short walk to Chiswick's High road with its array of boutique shops and restaurants, main retailers include M&S, Waitrose, Sainsbury and Tesco. Accommodation provides: spacious reception room with purpose-built display shelves and cabinets, feature triple sash window to front, galley style modern kitchen, double bedroom with fitted custom-built wardrobes, door to a modern bathroom with white suite and separate shower control over bath, fitted closet, gas fired central heating. local transport links include both Turnham Green & Chiswick Park tube stations, numerous local bus routes with convenient vehicular access via A4/M4 to central London, Heathrow and the West the property is offered unfurnished and available now

- Lovely central Chiswick location
- Great for transport links
- Period conversion apartment
- Nice condition throughout
- Bright and spacious reception room
- Modern galley style kitchen
- Double bedroom with fitted wardrobes
- Pleasant bathroom with shower over
- Available Now
- Offered unfurnished

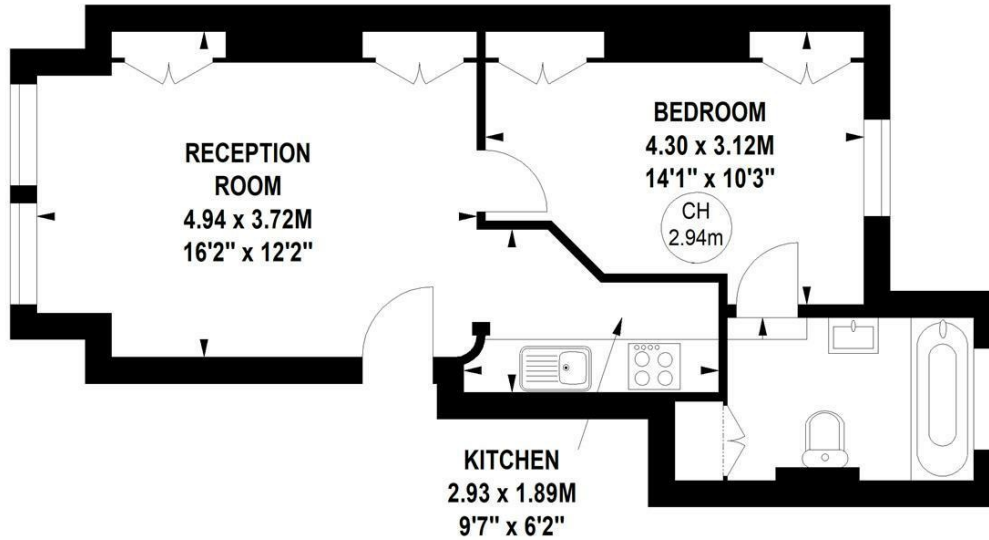
£1,400 Per Month

Linden Gardens, W4

Approximate gross internal area

40.23 sq m / 433 sq ft

Key :
CH - Ceiling Height



Raised Ground Floor

Not to scale, for guidance only and must not be relied upon as a statement of fact.
All measurements and areas are approximate only

Energy Efficiency Rating		Current	Potential
Very energy efficient - lower running costs			
(92 plus) A			
(81-91) B			
(69-80) C			
(55-68) D			
(39-54) E			
(21-38) F			
(1-20) G			
Not energy efficient - higher running costs			
England & Wales	EU Directive 2002/91/EC	69	80

Environmental Impact (CO ₂) Rating		Current	Potential
Very environmentally friendly - lower CO ₂ emissions			
(92 plus) A			
(81-91) B			
(69-80) C			
(55-68) D			
(39-54) E			
(21-38) F			
(1-20) G			
Not environmentally friendly - higher CO ₂ emissions			
England & Wales	EU Directive 2002/91/EC		

5-7 Turnham Green Terrace, Chiswick, London, W4 1RG

Tel 020 8747 8800

E-mail lettings@whitmanandco.com

Website www.whitmanandco.com