



- Three Bedroom Top Floor Flat
- Gas Central Heating
- UPVC Double Glazing
- Newly Fitted Bathroom

Park Terrace, Swalwell, Tyne And Wear

£55,000

****THREE BEDROOM FLAT WITH TWO BEDROOM PRICE TAG**** This top floor three bedroom flat makes an ideal investment buy. The property requires some modernisation which is reflected in the price. Located in Swalwell, close to the A1(M) and Metro Centre.



Property Description

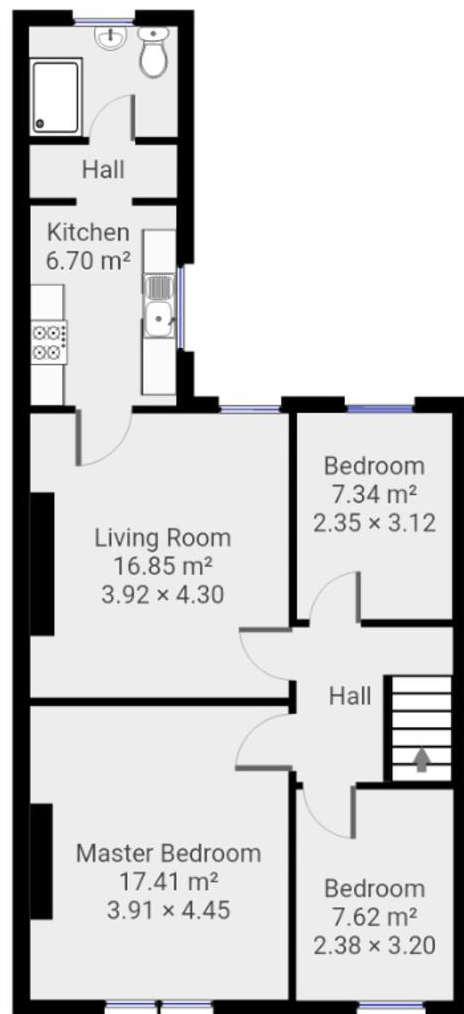
SEVEN KEYS welcome to the market this three bedroom top floor flat. The property requires some modernisation and would make an ideal investment buy. The property has been priced to reflect the need for refurbishments, so any purchaser can add value instantly. ****THREE BED FLAT WITH TWO BED PRICE TAG****

Briefly comprising entrance hallway, three bedrooms with carpet and double glazing, living room with feature fireplace, galley kitchen with a range of wall and base units, oven, hob and stainless steel sink, newly fitted bathroom with tiled shower, wash basin, low level toilet and radiator towel rail.

Book your viewing online at SevenKeys.co.uk.







%epcGraph_c_1_334%

Boston House, Unit 2 Fifth Avenue,
 Team Valley Trading Estate,
 Gateshead, Tyne And Wear, NE11
 0HF

www.sevenkeys.co.uk
 0191 4971797
 info@sevenkeys.co.uk

Agents Note: Whilst every care has been taken to prepare these particulars, they are for guidance purposes only. All measurements are approximate and for general guidance purposes only and whilst every care has been taken to ensure their accuracy, they should not be relied upon and potential buyers/tenants are advised to recheck the measurements