

5 Sidmouth Close

Seaham SR7 8HD

kimmitt & roberts



£279,950

5 Sidmouth Close

Dalton-Le-Dale, Seaham, SR7 8HD

Kimmit & Roberts are excited to present to the market this immaculately presented detached residence situated in this ever popular area of Seaham. The property has been maintained, extended and improved to a very high standard offering contemporary accommodation over two floors. Accommodation comprises entrance lobby, living room, extended and refitted kitchen/dining/family room, utility, wc., landing, four bedrooms with en-suite to master and refitted family bathroom. Externally, the property boasts a generous plot with ample off street parking and block paved garden to the front. To the rear is a private lawned garden with perimeter fencing and gate. Internal inspection is a must and cannot fail to impress.

Entrance Hall
with composite entrance door, radiator and staircase leading to first floor

Cloak/W.C.
with w.c., wash hand basin, double glazed window and radiator

Lounge
15'8" x 9'2" (+ bay) (4.8m x 2.8m (+ bay))
with double glazed bay window and radiator

Kitchen/Diner/Lounge
19'0" x 9'6" + 11'9" x 10'2" (5.8m x 2.9m + 3.6m x 3.1m)
with wall and base units with contrasting worktops and preparation surfaces, gas hob, electric oven, dish washer, double glazed window, radiator, understair storage cupboard and radiator



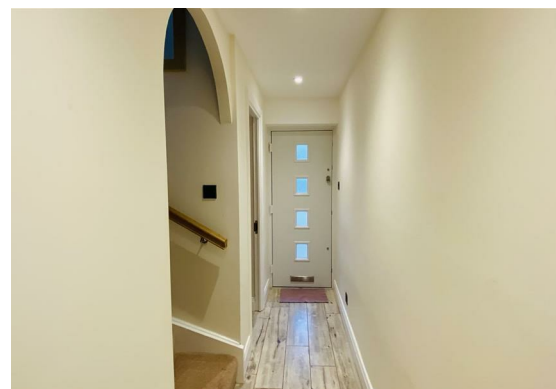


Utility
9'6" x 5'2" (2.9m x 1.6m)
with wall and base units, sink unit, double glazed window, radiator and composite door leading to rear of property

Cloak Room/Storage Cupboard

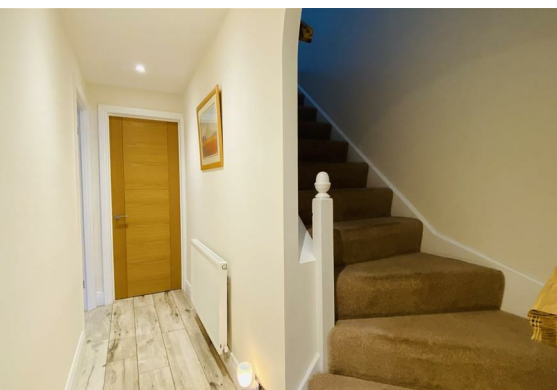
First Floor

Landing
with storage cupboard and loft access hatch



Bedroom 1
10'2" x 9'6" (+ recess) (3.1m x 2.9m (+ recess))
with built in wardrobes, double glazed window and radiator

Ensuite Bathroom
with stand alone shower, w.c., wash hand basin and double glazed window



Bedroom 2
12'1" x 10'2" (3.7m x 3.1m)
with double glazed window and radiator

Bedroom 3
8'2" x 6'6" (+ recess) (2.5m x 2.0m (+ recess))
with double glazed window and radiator

Bedroom 4
with double glazed window and radiator



Bathroom
having panel bath, w.c., wash hand basin, tiled walls, tiled floor, heated towel rail and double glazed window



Floor Plan



Viewing

Please contact our Seaham Office on 0191 581 3213 if you wish to arrange a viewing appointment for this property or require further information.

These particulars, whilst believed to be accurate are set out as a general outline only for guidance and do not constitute any part of an offer or contract. Intending purchasers should not rely on them as statements of representation of fact, but must satisfy themselves by inspection or otherwise as to their accuracy. No person in this firm's employment has the authority to make or give any representation or warranty in respect of the property.

Area Map



Energy Efficiency Graph

