

The Follies

Steeple Ashton, Trowbridge, BA14 6HN

COOPER
AND
TANNER



£410,000 Freehold

🛏️ 3 🛋️ 2 🚿 1 EPC E

Description

DESCRIPTION A three bedroom Detached bungalow just outside the popular village of Steeple Ashton. This property offers plenty of off road parking, two garages and a large garden.

As you enter the property the dining room and kitchen are on your right hand side. The kitchen has a range of wall and base units and this also has access to the conservatory on the side of the property which could be used as a utility. At the back of the property is the lounge with a feature fireplace. There is two double bedrooms both served by the family shower room.

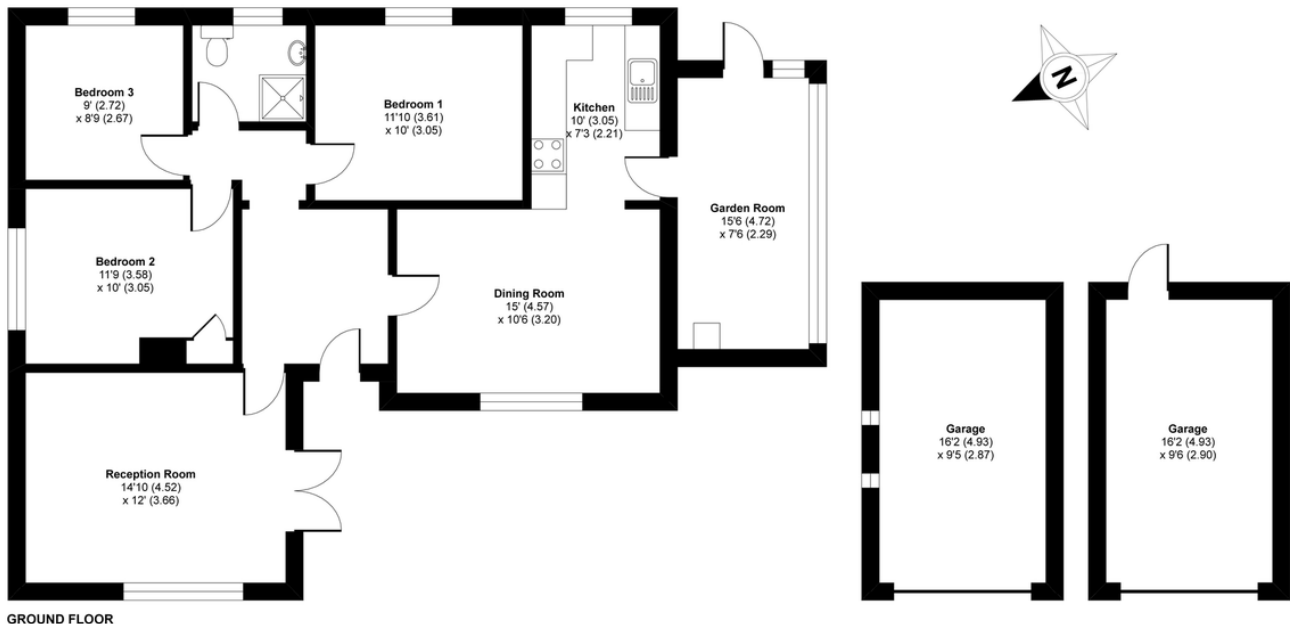
Steeple Ashton, Trowbridge, BA14

Approximate Area = 1041 sq ft / 96.7 sq m

Garages = 306 sq ft / 28.4 sq m

Total = 1347 sq ft / 125.1 sq m

For identification only - Not to scale



Features

- Detached Bungalow
- Three Bedroom
- Shower Room
- Living Room
- Dining Room
- Two Garages
- Off Road Parking
- Large Garden
- Popular Location
- No Onward Chain

Local Information

- Council Tax Band E
- Tenure Freehold
- EPC Rating E

WARMINSTER OFFICE

Telephone 01985 215579

48/50 Market Place, Warminster, Wiltshire, BA12 9AN

warminster@cooperandtanner.co.uk

**COOPER
AND
TANNER**

Important Notice: These particulars are set out as a general outline only for the guidance of intended purchasers and do not constitute, nor constitute part of, an offer or contract. All descriptions, dimensions, reference to condition and necessary permissions for use and occupation, warranties and other details are given without responsibility and any intending purchasers should not rely on them as statements or representations of fact but must satisfy themselves by inspection or otherwise as to the correctness of each of them.

