

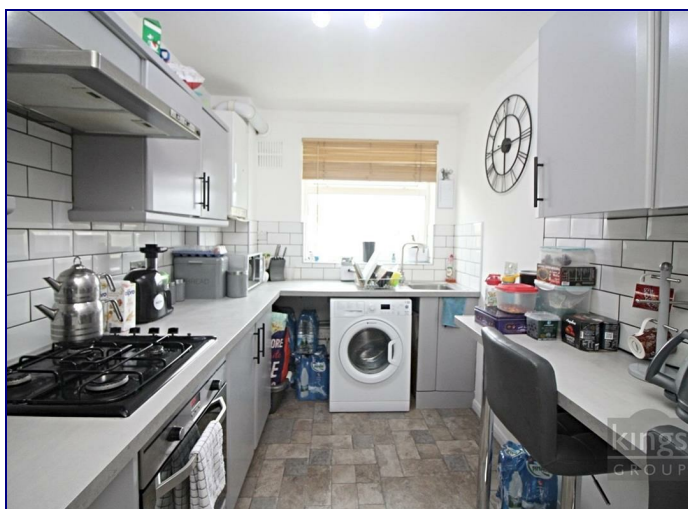
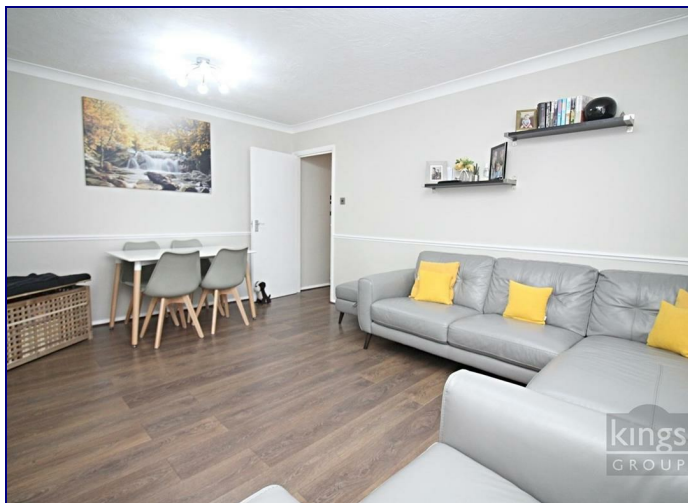


**[www.kings-group.net](http://www.kings-group.net)**

186 Hertford Road  
Enfield Highway EN3 5AZ  
Tel: 020 8805 5959

**101 Nags Head Road, Enfield, EN3 7AB**  
**Offers In The Region Of £260,000**

**\*\*CASH BUYERS ONLY\*\*** KINGS GROUP Are delighted to offer This Well Presented TWO DOUBLE BEDROOM GROUND FLOOR FLAT To the Market. Offering great links into TOTTENHAM HALE & LONDON LIVERPOOL STREET. Offered with NO ONWARD CHAIN, This Spacious Apartment benefits from Communal Grounds, Gardens & Parking, Two Double Bedrooms, Modern Fitted Kitchen, 950+ YEAR LEASE, Fully Double Glazed. With its great access to all Local Shops & Amenities, In our opinion this would make an Ideal First Time Buy or a Buy To Let Opportunity.



FRONT DOOR TO:

HALLWAY

BATHROOM

With double glazed window to side, part tiled walls, panel enclosed bath with shower attached, wash hand basin, low level W.C, tiled flooring.

LOUNGE

With double glazed window to rear, coved and textured ceiling, double radiator, phone point, power points, laminated wood style flooring,

KITCHEN

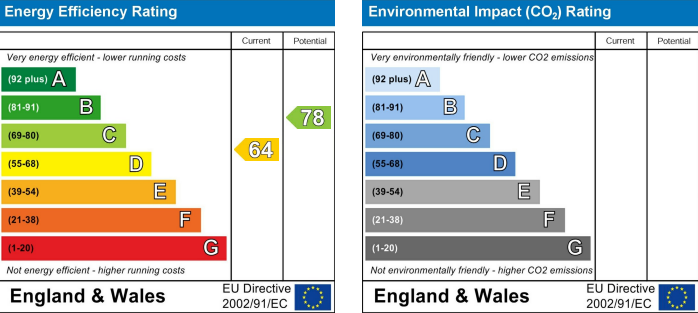
With double glazed window to rear, range of base and wall units with work tops over, sink and drainer unit, plumbed for washing machine, electric oven, gas hob, space for fridge/freezer, power points, lino flooring.

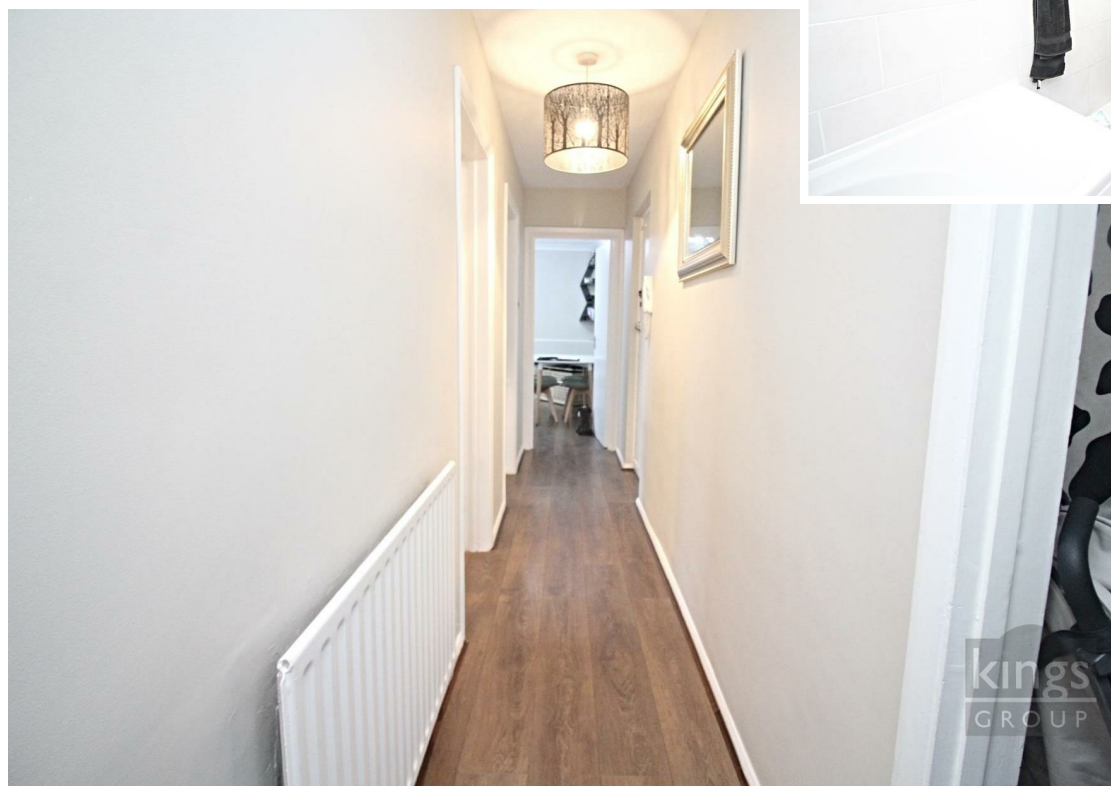
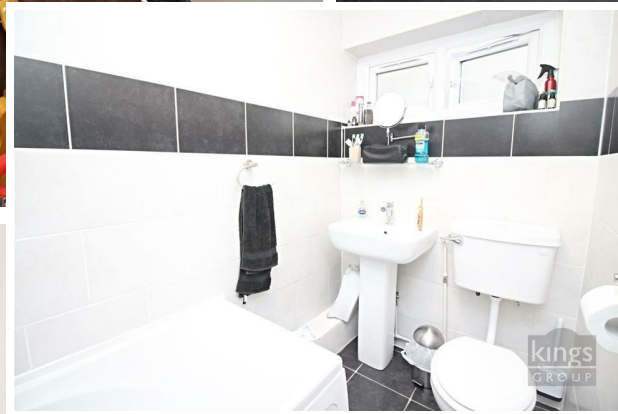
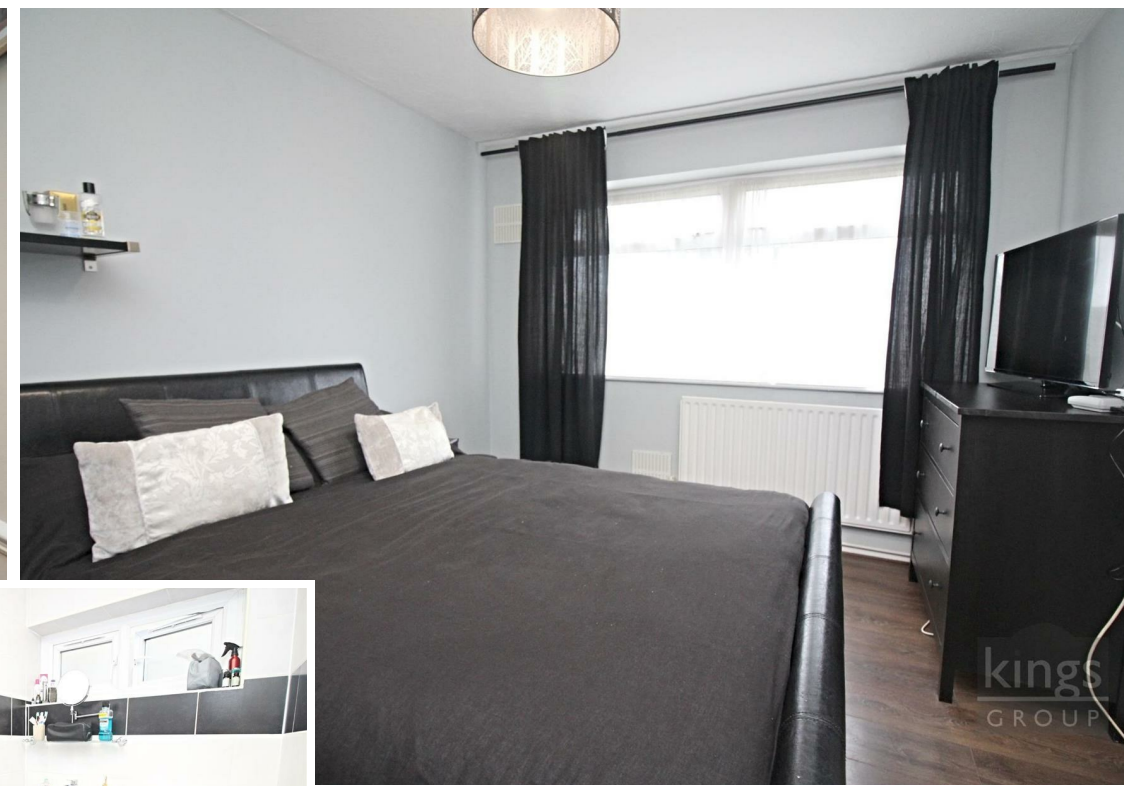
BEDROOM ONE

With double glazed window to rear, textured ceiling, single radiator, power points, laminated wood style flooring,

BEDROOM TWO

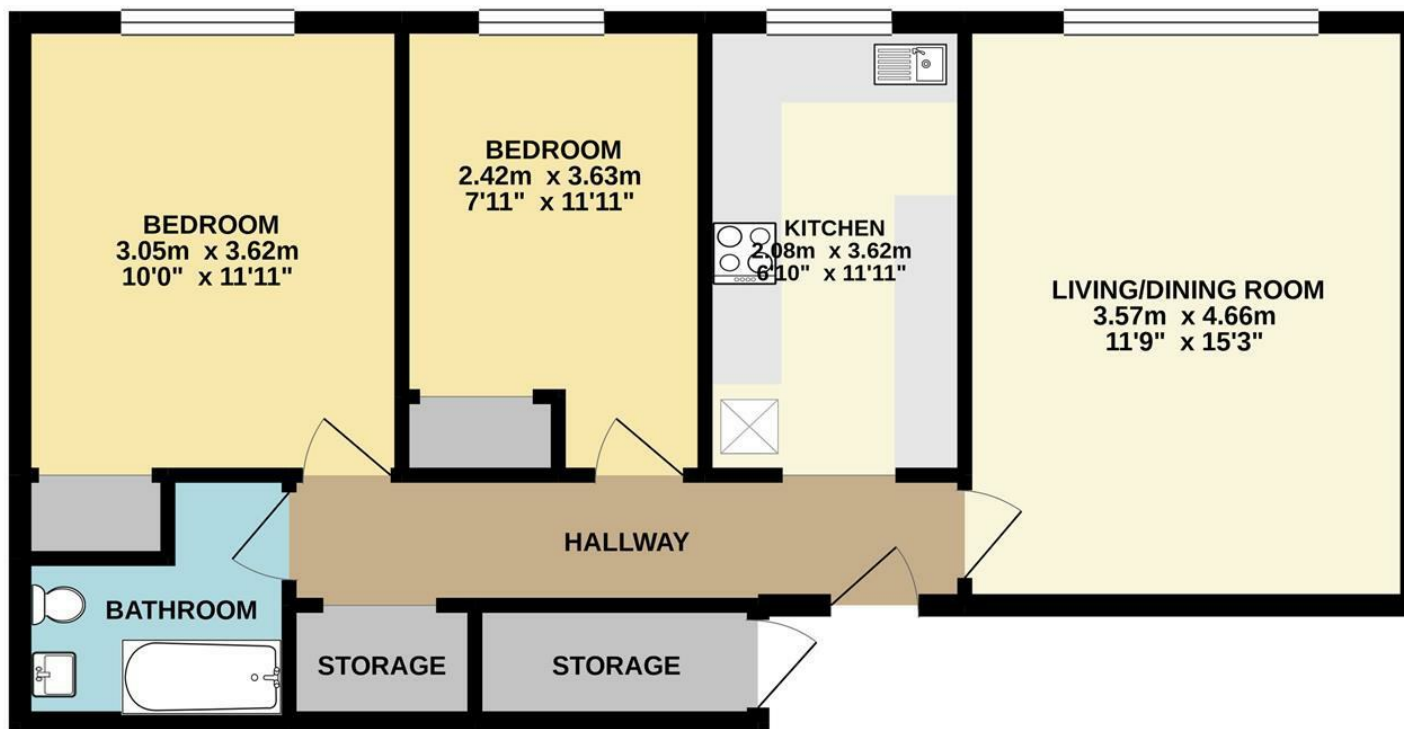
With double glazed window to rear, textured ceiling, single radiator, power points, laminated wood style flooring,







GROUND FLOOR  
62.0 sq.m. (667 sq.ft.) approx.



TOTAL FLOOR AREA : 62.0 sq.m. (667 sq.ft.) approx.

Whilst every attempt has been made to ensure the accuracy of the floorplan contained here, measurements of doors, windows, rooms and any other items are approximate and no responsibility is taken for any error, omission or mis-statement. This plan is for illustrative purposes only and should be used as such by any prospective purchaser. The services, systems and appliances shown have not been tested and no guarantee as to their operability or efficiency can be given.  
Made with Metropix ©2021



Associated Offices in London, Essex and Hertfordshire  
Kings Head Office Tudor Lodge, Burton Lane, Goffs Oak, Hertfordshire EN7 6SY Tel: 01707-872000

