



Bollo Bridge Road, London, W3 8AU

A very nicely presented two bedroomed first floor apartment situated in this popular residential road within walking distance of both Acton High Street and Chiswick High Road with their extensive shopping and restaurant facilities, local recreation grounds are just moments away whilst further afield are the open spaces of Southfield recreation grounds and tennis courts. The accommodation provides: spacious reception room with bay window to front, built in display cabinets and cupboards, fitted kitchen, bathroom with utility area, two bedrooms on with full-length mirror fronted wardrobes, separate cloakroom, gas fired central heating. Local transport links include both Acton Town (Piccadilly Line) and Chiswick Park (District Line), numerous local bus routes with convenient vehicular access via A4/M4 Central London, Heathrow & The west the property is offered unfurnished and is available immediately

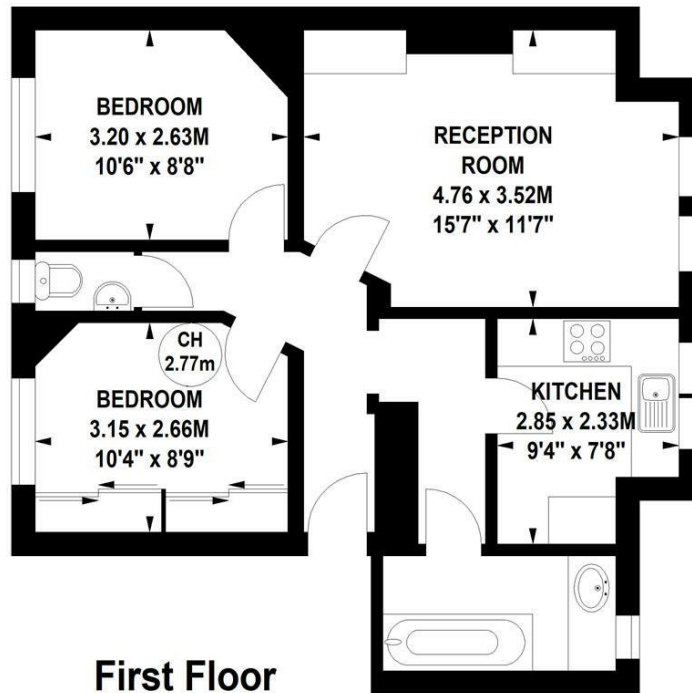
- Very nicely presented period conversion
- Great for transport links
- Spacious reception room
- Fitted kitchen
- Two bedrooms
- Bathroom/Utility room
- Separate cloakroom
- Gas fired central heating
- Offered unfurnished
- Available immediately

£1,300 Per Month

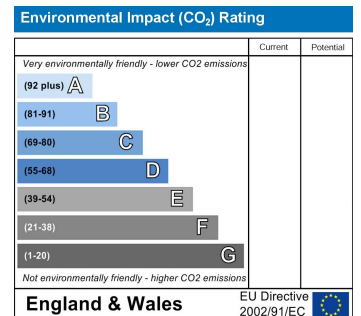
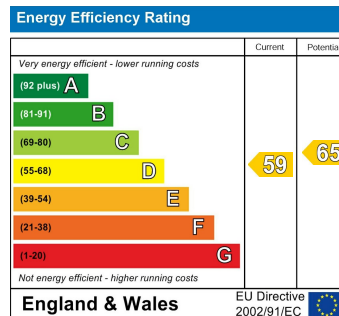
Bollo Bridge Road, W3

Approximate gross internal area
55.65 sq m / 599 sq ft

Key :
CH - Ceiling Height



Not to scale, for guidance only and must not be relied upon as a statement of fact.
All measurements and areas are approximate only



5-7 Turnham Green Terrace, Chiswick, London, W4 1RG

Tel 020 8747 8800

E-mail lettings@whitmanandco.com

Website www.whitmanandco.com