

Jukes & Co

Estate Agents



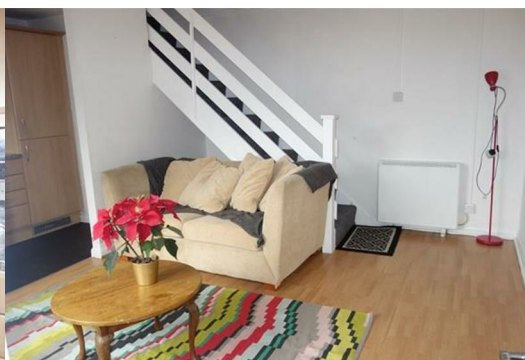
Broster Gardens

, London, SE25 6TX

£1,000 Per Month



A most attractive 1 bedroom house set in a quiet cul-de-sac close to South Norwood Hill and offered to rent in excellent condition. The house benefits from a 10ft modern kitchen with lots of storage, light and spacious reception area, a double bedroom and modern bathroom. It also has off-street parking. The house is located 1/2 mile from Norwood Junction Station, making it ideal for commuters. AVAILABLE FROM BEGINNING OF MARCH.



Property Features

Entrance Lobby

Lounge

13'7 x 11'1 Wall heater, double glazed windows, laminate wood flooring

Modern Fitted Kitchen

10'4 x 5'6 Stainless steel sink unit-single drainer-mixer tap, range of wall and base units, built in dishwasher, integrated washing machine, built in fridge freezer, built in electric oven and hob and chimney extractor hood, part tiled walls, built in cupboard, power points

Landing

Built in cupboard housing hot water tank, access to loft

Bedroom

11'2 x 10'6 Electric wall heater, built in wardrobe, double glazed windows

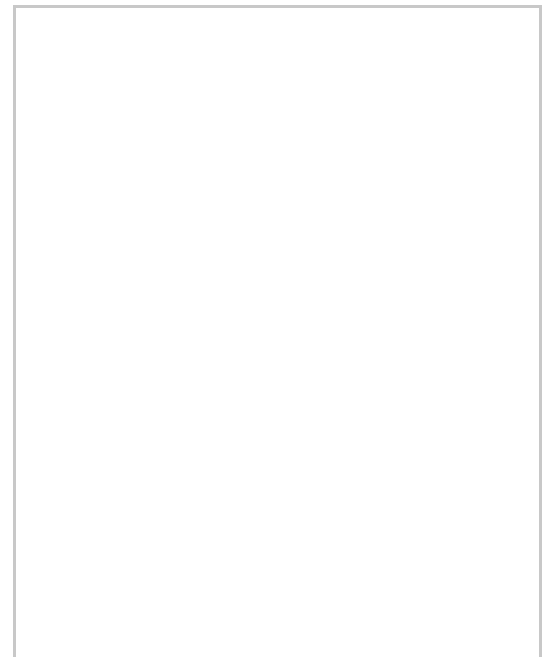
Modern Fitted Bathroom

White suite: panel bath-mixer tap-shower attachment, shower screen, double glazed window, part tiled walls, laminate wood flooring, pedestal wash hand basin

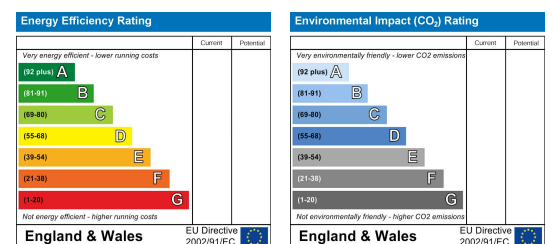
Area Map



Floor Plan



Energy Efficiency Graph



These particulars, whilst believed to be accurate are set out as a general outline only for guidance and do not constitute any part of an offer or contract. Intending purchasers should not rely on them as statements of representation of fact, but must satisfy themselves by inspection or otherwise as to their accuracy. No person in this firm's employment has the authority to make or give any representation or warranty in respect of the property.

Sales and Lettings

76 High Street, South Norwood, London SE25 6EB

T: 020 8653 9393 · F: 020 8771 5551 · E: sales@jukesestateagents.com · E: lettings@jukesestateagents.com

W: jukesestateagents.com