



## 243B Walworth Road

London, SE17 1RL

**£1,250 Per Month**

A recently decorated and exceptionally large two double bedroom split level flat. The property has also had new grey carpets installed. The flat benefits from having double glazed windows and central heating plus a kitchen/diner. Situated close to transport and amenities.

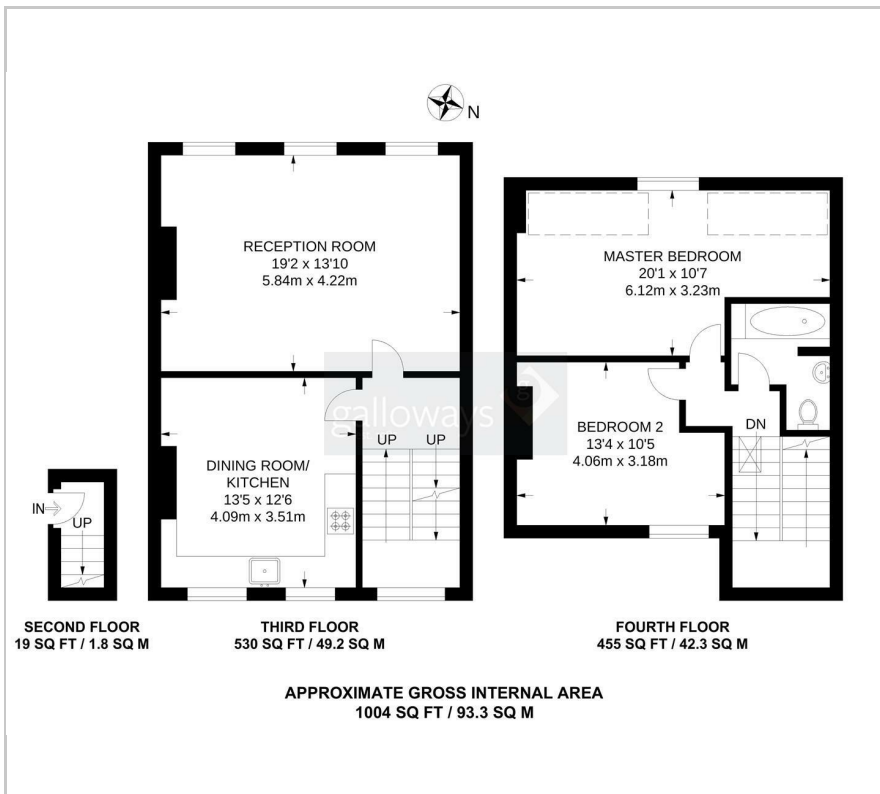
- TWO DOUBLE BEDROOMS
- SPLIT LEVEL FLAT
- RECENTLY DECORATED THROUGHOUT
- CENTRAL HEATING
- DOUBLE GLAZED WINDOWS
- NEW FITTED CARPETS
- 10 MINUTE WALK TO ELEPHANT AND CASTLE TUBE STATION
- (WALKING TIMES ESTIMATED BY GOOGLE MAPS)
- 1004 SQ FT / 93.3 SQ M TOTAL FLOOR SPACE
- UNFURNISHED

### Viewing

Please contact our Galloways West Norwood Office on if you wish to arrange a viewing appointment for this property or require further information.



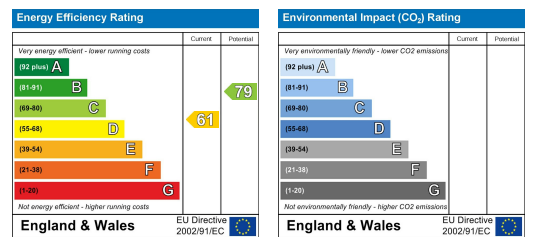
## Floor Plan



## Area Map



## Energy Efficiency Graph



These particulars, whilst believed to be accurate are set out as a general outline only for guidance and do not constitute any part of an offer or contract. Intending purchasers should not rely on them as statements of representation of fact, but must satisfy themselves by inspection or otherwise as to their accuracy. No person in this firm's employment has the authority to make or give any representation or warranty in respect of the property.