



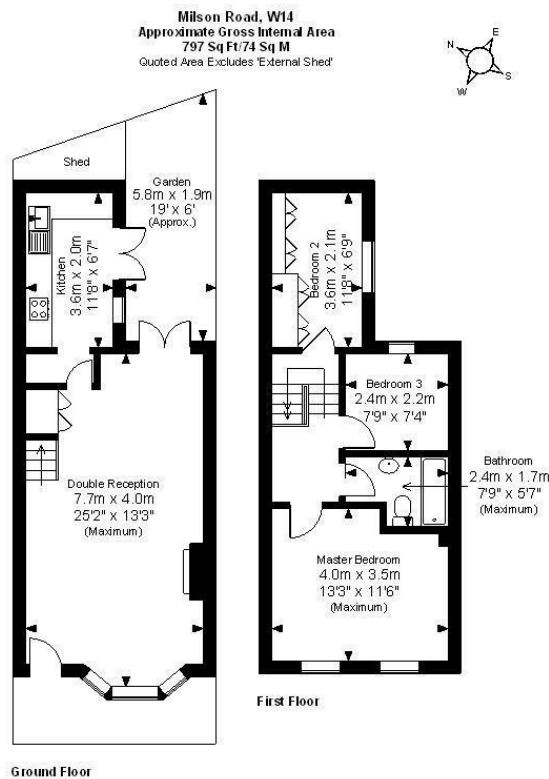
MILSON ROAD W14





- 3 BEDROOMS • WOODEN FLOORS • DOUBLE RECEPTION • SEPARATE FITTED KITCHEN • FAMILY BATHROOM • PATIO GARDEN • QUIET LOCATION IN HEART OF BROOK GREEN • CLOSE TO TRANSPORT • UNFURNISHED • AVAILABLE 7TH APRIL

Beautiful 3 bedroom cottage, with wooden floors, double reception, separate fitted kitchen, family bathroom and private patio garden. Located on a quiet residential street in the heart of Brook Green, close to the transport links at Shepherds Bush, Kensington Olympia and Hammersmith. Available 7th April, Unfurnished.



FOR ILLUSTRATIVE PURPOSES ONLY - NOT TO SCALE
 The position & size of doors, windows, appliances and other features are approximate only.
 ©ehouse. Unauthorised reproduction prohibited. Drawing ref. dfg8182784AKM

138 Shepherds Bush Road, London, W6 7PB
 Tel: 020 7371 4071 lettings@finlaybrewer.co.uk