

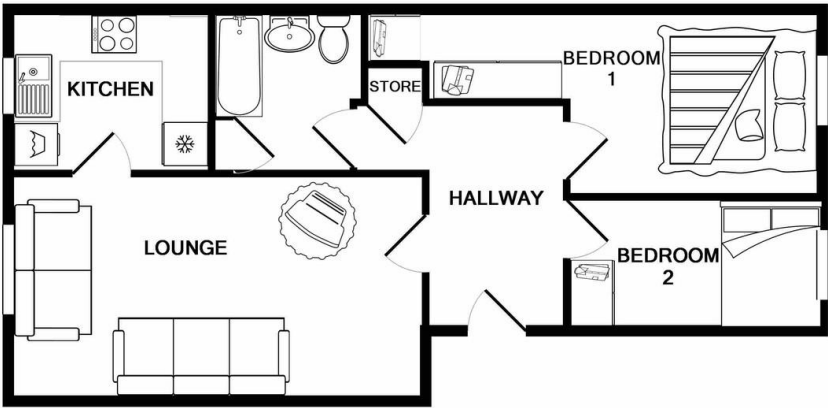
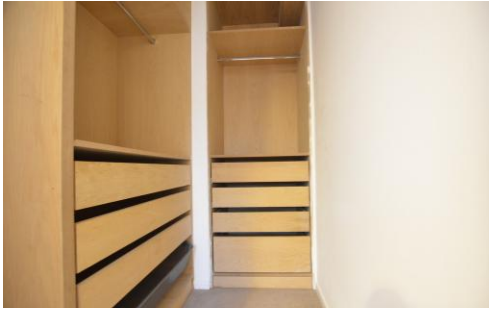


61 Ash Walk  
, Wembley, , HA0 3QW

£1,450 pcm

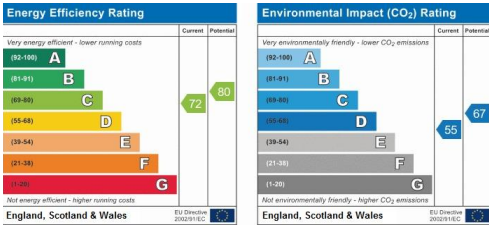
# Property Summary

A spacious two good size bedroom ground floor flat available straightaway. The location of this flat is in much sought after development in North Wembley and over-looking the vale farm sports ground. This lovely flat is decorated with fitted kitchen, a great size reception area, two double bedrooms and one modernised bathroom.



TOTAL APPROX. FLOOR AREA 536 SQ.FT. (49.8 SQ.M.)

Whilst every attempt has been made to ensure the accuracy of the floor plan contained here, measurements of doors, windows, rooms and any other items are approximate and no responsibility is taken for any error, omission, or mis-statement. This plan is for illustrative purposes only and should be used as such by any prospective purchaser. The services, systems and appliances shown have not been tested and no guarantee as to their operability or efficiency can be given  
Made with Metropix ©2018



- Two Double Bedrooms
- Great size Reception
- Family Bathroom
- Fitted Modern Kitchen
- Double Glazed Throughout
- Good-size Storage Area
- Newly Decorated
- Newly Refurbished
- Secure Phone Entry System

38 Court Parade  
Wembley  
Middlesex  
HA0 3HS

www.propertyhubltd.com  
info@propertyhubltd.com  
0208 903 1002

Agents Note: Whilst every care has been taken to prepare these particulars, they are for guidance purposes only. All measurements are approximate are for general guidance purposes only and whilst every care has been taken to ensure their accuracy, they should not be relied upon and potential buyers/tenants are advised to recheck the measurements