



Hilltop Close

Ascot



Downstairs is a modern kitchen with dining space, family room and an extended living room with bi-folding doors leading out to the garden.

Upstairs there are three bedrooms and a family bathroom.

To the front of the house is ample driveway parking, and the rear garden includes an outhouse perfect for a gym or home office.

Hilltop Close is on Cheapside Road, in the small village of Cheapside, Ascot. Nearby schools include Charters, Cheapside, Holy Trinity, The Marist and St Francis. Local places of interest include Ascot Racecourse, Coworth Park, Guards Polo Club, Legoland, Sunningdale Golf Club, Virginia Water Lake, Wentworth Club and Windsor Great Park. The station in Ascot runs trains to London Waterloo, Guildford and Reading. Cheapside is also convenient for the M3, M4, M25 and Heathrow Airport.

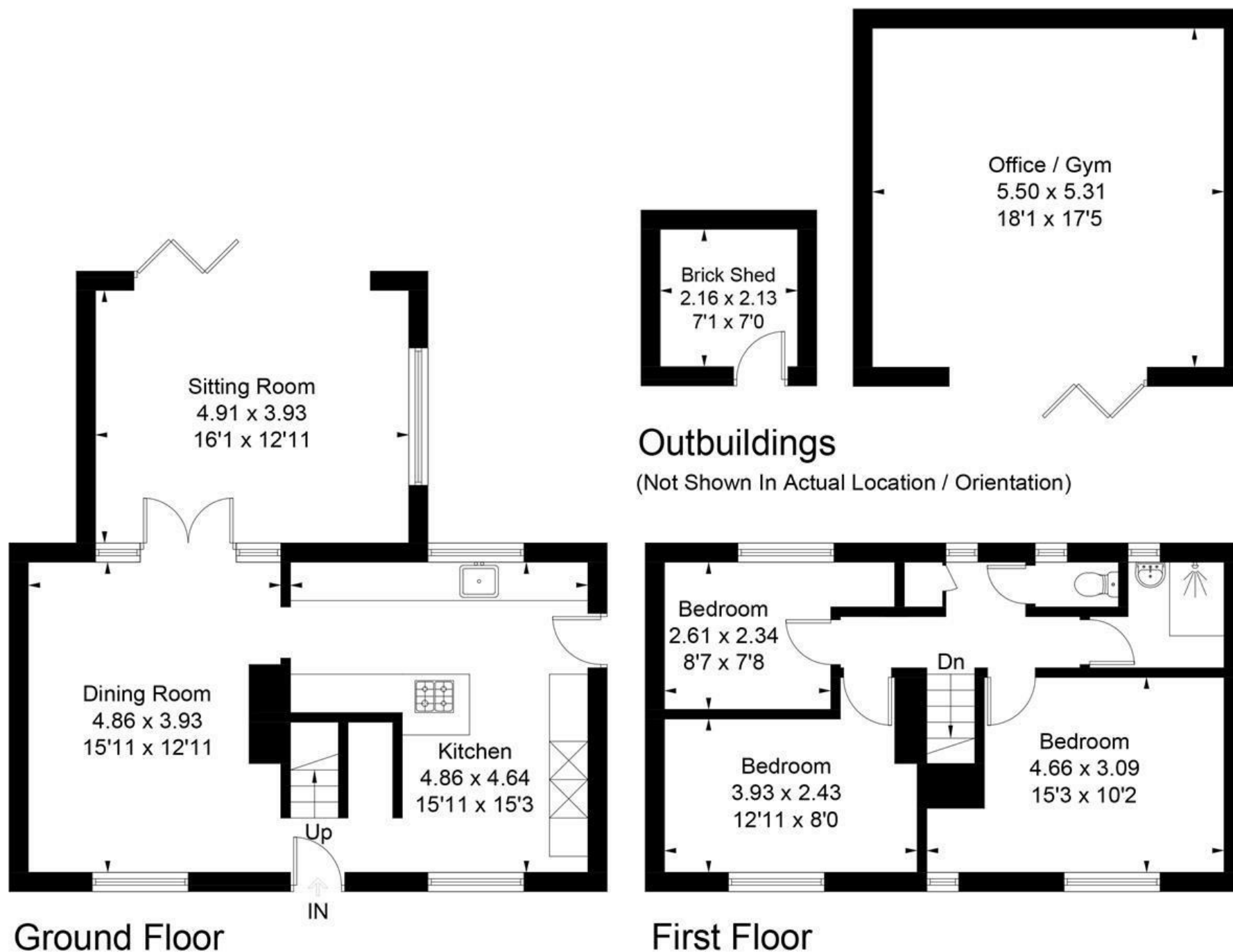
EPC rating C.



Approximate Area = 105.6 sq m / 1136 sq ft

Outbuildings = 33.7 sq m / 363 sq ft

Total = 139.3 sq m / 1499 sq ft



Surveyed and drawn in accordance with the International Property Measurement Standards (IPMS 2: Residential)

fourwalls-group.com 272724

VIDEO VIEWING AVAILABLE - An extended three bedroom semi-detached house in a cul-de-sac with driveway parking and an outhouse/studio.



01344 627777

osborneheath.co.uk • sales@osborneheath.co.uk • lettings@osborneheath.co.uk